

CORRECTION

Correction: AIM2 Drives Joint Inflammation in a Self-DNA Triggered Model of Chronic Polyarthritis

Christopher Jakobs, Sven Perner, Veit Hornung

In Fig 1 panel A, the data sets of the control groups ($Aim2^{-/-} Dnase2^{+/+} Ifnar1^{-/-}$ and $Aim2^{+/+} Dnase2^{+/+} Ifnar1^{-/-}$) are shown as mirror images of the original data. In Fig 2 panel A, the shades of grey in the legend ($Aim2^{-/-} Dnase2^{+/+} Ifnar1^{-/-}$ and $Aim2^{+/+} Dnase2^{+/+} Ifnar1^{-/-}$) are swapped. In Fig 2 panel B the third and fourth labels are swapped. Please see the correct Figs 1 and 2 here.

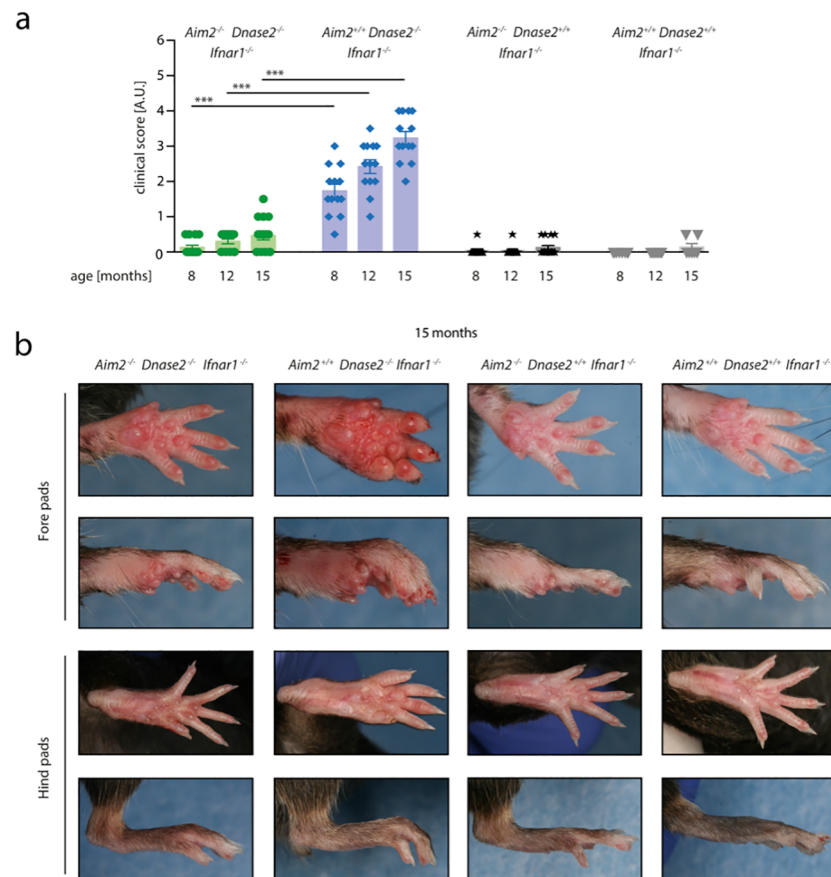
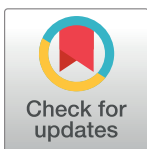


Fig 1. Swelling of joints in the context of *Dnase2*-deficiency is AIM2-dependent. A: $Aim2^{+/+} Dnase2^{-/-} Ifnar1^{-/-}$, $Aim2^{-/-} Dnase2^{-/-} Ifnar1^{-/-}$, $Aim2^{+/+} Dnase2^{+/+} Ifnar1^{-/-}$ and $Aim2^{-/-} Dnase2^{+/+} Ifnar1^{-/-}$ mice were scored for joint swelling at indicated time points in a blinded fashion. Statistical significance was assessed using a two-tailed Mann-Whitney test comparing *Dnase2*^{-/-} cohorts at 8, 12 or 15 months. B: Representative pictures of fore- and hind pads of $Aim2^{+/+} Dnase2^{-/-} Ifnar1^{-/-}$, $Aim2^{-/-} Dnase2^{-/-} Ifnar1^{-/-}$, $Aim2^{+/+} Dnase2^{+/+} Ifnar1^{-/-}$ and $Aim2^{-/-} Dnase2^{+/+} Ifnar1^{-/-}$ mice at the age of 15 month are shown.

<https://doi.org/10.1371/journal.pone.0202364.g001>



OPEN ACCESS

Citation: Jakobs C, Perner S, Hornung V (2018) Correction: AIM2 Drives Joint Inflammation in a Self-DNA Triggered Model of Chronic Polyarthritis. PLoS ONE 13(8): e0202364. <https://doi.org/10.1371/journal.pone.0202364>

Published: August 9, 2018

Copyright: © 2018 Jakobs et al. This is an open access article distributed under the terms of the [Creative Commons Attribution License](https://creativecommons.org/licenses/by/4.0/), which permits unrestricted use, distribution, and reproduction in any medium, provided the original author and source are credited.

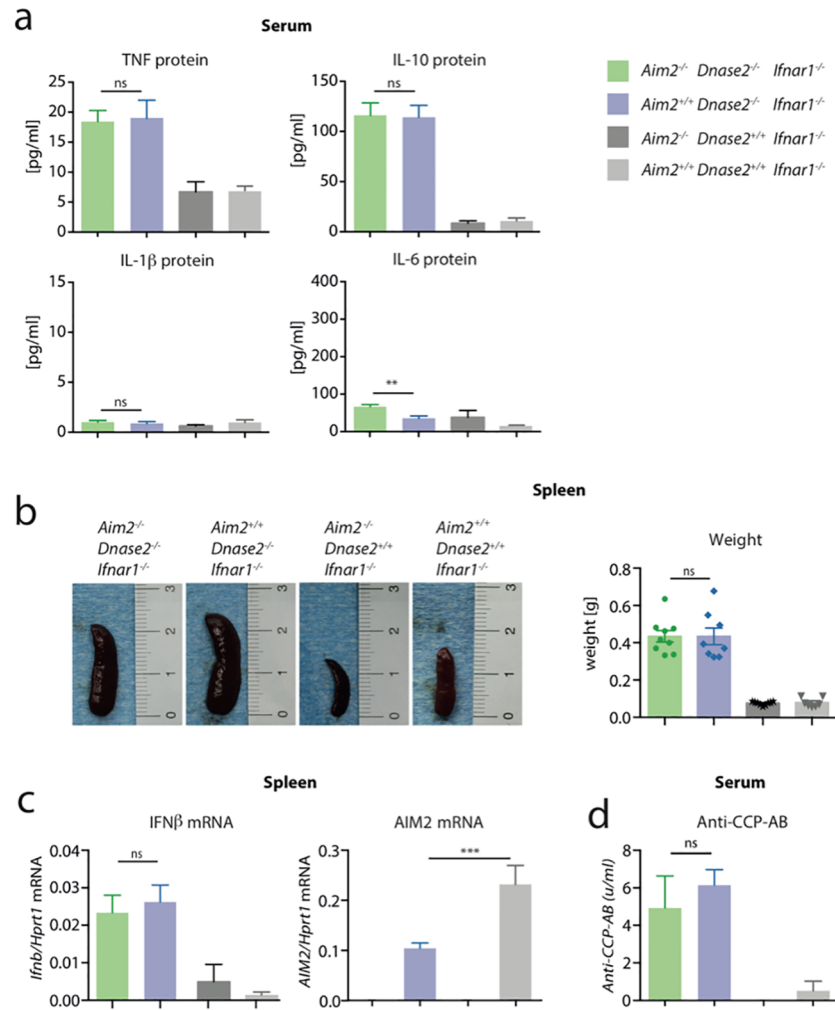


Fig 2. Systemic proinflammatory status in *Dnase2*^{-/-} mice is independent of AIM2. A: Serum was collected from *Aim2*^{+/+} *Dnase2*^{-/-} *Ifnar1*^{-/-}, *Aim2*^{-/-} *Dnase2*^{-/-} *Ifnar1*^{-/-}, *Aim2*^{+/+} *Dnase2*^{+/+} *Ifnar1*^{-/-} and *Aim2*^{-/-} *Dnase2*^{+/+} *Ifnar1*^{-/-} mice at the age of 15 month and analyzed for the depicted cytokines. B: Spleen weight and representative pictures of spleens from mice at the age of 15 month. C: Relative IFN β gene expression in spleen tissue normalized to the expression level of HPRT1 is shown. D: Anti-cyclic citrullinated peptide antibody (Anti-CCP-AB) was measured in serum samples as in (A). Data are presented as mean values + SEM, whereas statistical significance was assessed using a two-tailed, unpaired t-test comparing the *Dnase2*^{-/-} cohorts.

<https://doi.org/10.1371/journal.pone.0202364.g002>

Reference

1. Jakobs C, Perner S, Hornung V (2015) AIM2 Drives Joint Inflammation in a Self-DNA Triggered Model of Chronic Polyarthritis. PLoS ONE 10(6): e0131702. <https://doi.org/10.1371/journal.pone.0131702> PMID: 26114879