

RESEARCH ARTICLE

Response to early drought stress and identification of QTLs controlling biomass production under drought in pearl millet

Marilyne Debieu^{1,2}[✉], Bassirou Sine^{1,2,3}[✉], Sixtine Passot¹[✉], Alexandre Grondin^{1,2}, Eyanawa Akata^{2,3,4}, Prakash Gangashetty⁵, Vincent Vadez¹, Pascal Gantet¹, Daniel Foncéka^{2,3,6}, Laurentournac^{7,8}, Charles Tom Hash⁵, Ndjido Ardo Kane^{2,9}, Yves Vigouroux^{1,2}[✉]*, Laurent Laplaze^{1,2,10}[✉]*

1 DIADE, Université de Montpellier, Institut de Recherche pour le Développement (IRD), Montpellier, France, **2** Laboratoire mixte international Adaptation des Plantes et microorganismes associés aux Stress Environnementaux (LAPSE), Dakar, Senegal, **3** Centre d'Etude Régional pour l'Amélioration de l'Adaptation à la Sécheresse (CERAAS), Institut Sénégalais des Recherches Agricoles (ISRA), Thiès, Senegal, **4** Institut Togolais de Recherche Agronomique (ITRA), Lomé, Togo, **5** International Crop Research Institute for the Semi-Arid Tropics (ICRISAT), Niamey, Niger, **6** AGAP, Centre de coopération internationale en recherche agronomique pour le développement (CIRAD), Institut National de la Recherche Agronomique (INRA), Montpellier SupAgro, Université de Montpellier, Montpellier, France, **7** Eco&Sols, IRD, CIRAD, INRA, Montpellier SupAgro, Université de Montpellier, Montpellier, France, **8** Laboratoire mixte international Intensification Ecologique des Sols cultivés en Afrique de l'Ouest, Dakar, Senegal, **9** Laboratoire National de Recherches sur les Productions Végétales (LNRPV), ISRA, Dakar, Senegal, **10** Laboratoire Commun de Microbiologie IRD/ISRA/Université Cheikh Anta Diop (UCAD), Dakar, Senegal

 These authors contributed equally to this work.

[✉] Current address: UMR MARBEC, (CNRS, IRD, IFREMER, UM), Montpellier, France

[✉] Current address: Earth and Life Institute-Agronomy, Université Catholique de Louvain, Louvain-La-Neuve, Belgium

* laurent.laplaze@ird.fr (LL); yves.vigouroux@ird.fr (YV)



 OPEN ACCESS

Citation: Debieu M, Sine B, Passot S, Grondin A, Akata E, Gangashetty P, et al. (2018) Response to early drought stress and identification of QTLs controlling biomass production under drought in pearl millet. PLoS ONE 13(10): e0201635. <https://doi.org/10.1371/journal.pone.0201635>

Editor: Prasanta K. Subudhi, Louisiana State University College of Agriculture, UNITED STATES

Received: July 13, 2018

Accepted: October 16, 2018

Published: October 25, 2018

Copyright: © 2018 Debieu et al. This is an open access article distributed under the terms of the [Creative Commons Attribution License](https://creativecommons.org/licenses/by/4.0/), which permits unrestricted use, distribution, and reproduction in any medium, provided the original author and source are credited.

Data Availability Statement: All phenotypic data are within the paper and its Supporting Information files. Genotyping (GBS) data are available in genbank (acc. PRJNA492967).

Funding: This work was supported by the IRD, the French Ministry for Research and Higher Education (PhD grant to SP) and the NewPearl grant in the frame of the CERES initiative by the Agropolis Fondation (N° AF 1301-015 to LL, as part of the "Investissement d'avenir" ANR-10-LABX-0001-01) under the frame of I-SITE MUSE (ANR-16-IDEX-

Abstract

Pearl millet plays a major role in food security in arid and semi-arid areas of Africa and India. However, it lags behind the other cereal crops in terms of genetic improvement. The recent sequencing of its genome opens the way to the use of modern genomic tools for breeding. Our study aimed at identifying genetic components involved in early drought stress tolerance as a first step toward the development of improved pearl millet varieties or hybrids. A panel of 188 inbred lines from West Africa was phenotyped under early drought stress and well-irrigated conditions. We found a strong impact of drought stress on yield components. This impact was variable between inbred lines. We then performed an association analysis with a total of 392,493 SNPs identified using Genotyping-by-Sequencing (GBS). Correcting for genetic relatedness, genome wide association study identified QTLs for biomass production in early drought stress conditions and for stay-green trait. In particular, genes involved in the sirohaem and wax biosynthesis pathways were found to co-locate with two of these QTLs. Our results might contribute to breed pearl millet lines with improved yield under drought stress.

0006) and by the Fondazione Cariplo (N° FC 2013-0891).

Competing interests: The authors have declared that no competing interests exist.

Introduction

Pearl millet (*Pennisetum glaucum* (L.) R. Br., syn. *Cenchrus americanus* (L.) Morrone) was domesticated in the central Sahel region of Africa [1]. It is adapted to dry and hot climates and it plays a major role in food security in arid and semi-arid areas of Africa and India. However, there is still a wide scope to increase its adaptation to environmental constraints limiting its production. Pearl millet is the staple crop of more than 90 million farmers. Grains are gluten-free and rich in proteins and essential micronutrients such as iron or zinc. It is consumed directly as couscous or porridge and also used to make flour to produce flat bread or to be introduced in bread production to reduce the imports of wheat in some African countries. Moreover, the aerial biomass is an important source of fodder for animals. However, pearl millet lags behind the other cereal crops in terms of genetic improvement and its average yields are still low. The recent sequencing of its genome [2] opens the way to tap on its large genetic diversity to breed varieties and hybrids adapted to current and predicted future climatic constraints [3].

Drought is one of the major factors limiting pearl millet production. In sub-Saharan Africa, pearl millet is mostly grown in areas characterized by low rainfall and sandy soils with very little organic matter that have therefore low water retention ability. The climate is characterized by a long dry season and a short rainy season where most of the rain-fed agriculture is concentrated [4]. Pearl millet is usually sown after or just before the first rain of the rainy season. Because of the rain pattern, pearl millet can face drought stress at early stages if the first rains of the season are distant from each other. Another important drought stress period is the grain filling stage. Current climate models predict that the rain pattern in sub-Saharan Africa will be more variable from one year to the other and will involve more extreme events [4]. Episodes of drought are therefore expected to be more frequent during the rainy season. Altogether, climate change is expected to lead to a reduction in pearl millet yield in the area [4]. While terminal drought stress was the focus of several studies in pearl millet [5–8] little is known about the impact of drought episodes during the vegetative phase.

The aim of this study was to characterize the impact of early drought episodes on pearl millet in field conditions and to identify genetic components contributing to tolerance to this stress.

Material and methods

Plant material and trait measurements

A panel of 188 pearl millet (*Pennisetum glaucum* (L.) R. Br.) inbred lines developed at ICRISAT (Niger) from landrace and improved open-pollinated cultivars of West African origin was used in this study together with inbred line ICMB88004 as a control (S1 Table). Some of these inbred lines were previously characterized for grain quality [9].

Field trials were performed at the CNRA station (Centre National de Recherche Agronomique) of the Institut Sénégalais des Recherches Agricoles (ISRA) in Bambey, Senegal (14.42°N, 16.28°W) during the dry season in 2015 (planting: March 24th, harvesting: June 16th) and 2016 (planting: March 10th, harvesting: June 14th) on two adjacent fields. Field trials were conducted in collaboration with and with the permission of the ISRA. Trials did not involve endangered or protected species. Soils are deep sandy soil with low levels of clay and silt (12%) and organic matter (0.4%). Clay and silt content increase with soil depth from 10.2% in the 0 to 0.2 m layer to 13.3% in the 0.8 to 1.2 m layer. Trials were set up using an incomplete randomized blocks design (S1 and S2 Figs). A total of twenty plants were grown per variety in 2 rows of 3 m long with 0.30 m between plants and 0.8 m between rows. Fifteen days after sowing, a single plant per planting hole was conserved, so ten plants per variety for a given row. Fertilization (NPK) followed

standard recommendation i.e. 150 kg ha⁻¹ of NPK (15-15-15) after sowing. Urea was applied at 100 kg ha⁻¹ at two stages, 50 kg ha⁻¹ after thinning and 50 kg ha⁻¹ 30 days after sowing.

The flowering date corresponding to 50% of plants flowering (in days after sowing) was recorded. Height of the plant (in cm), panicle and stalk length (in cm), total number of leaves, aerial biomass (kg.plant⁻¹), as well as stay-green trait (number of green leaves/total number of leaves) were measured on six plants per plot at maturity. Shoots and panicles were harvested and used to quantify total grain weight (g/plant), number of grains per plant, weight of 1000 grains (g) and aerial biomass (g dry mass/plant). These data were used to compute a harvest index (grain weight/biomass weight).

Plants were grown during the dry season (February to June) to fully control the amount of water provided (no rain during the experiments). Irrigation was performed twice per week with 30 mm water per irrigation. Early drought stress was applied by stopping irrigation three weeks after germination for four weeks. Irrigation was then resumed until the end of the growth cycle. Field dry-down was followed by measuring volumetric soil moisture to evaluate the fraction of transpirable soil water (FTSW) using Diviner probes (Sentek Pty Ltd). Canopy temperature was measured on two plants per plot 30 days after the start of the dry down period in both well-irrigated and drought-stress treatments using an Infrared thermometer (Quicktemp).

The spatial trend in the incomplete block design was evaluated using control plants (inbred line ICMB88004) and the phenotype of each line was corrected using the SpATS package in R (S3 Fig; [10]). Corrected data are provided as S2 Table.

DNA isolation and genotyping by sequencing

Genomic DNA was isolated from three-week old leaves as previously described [11]. A single plant was usually used per accession but for 68 inbred lines, 2 sister plants were used to control the procedure. Whole-genome genotyping was carried out using Genotyping-By-Sequencing (GBS) at the Genomic Diversity Foundation at Cornell University (Ithaca, USA). GBS libraries were prepared using restriction enzyme *ApeKI* [12]. Digested DNAs were ligated to barcoded adapter pairs. 96-plex libraries were sequenced using a HiSeq2500 and a NextSeq500 sequencing system (Illumina). Raw sequence data are available at Genbank under accession PRJNA492967. Adapter sequences were removed using the cutadapt software and low quality reads were filtered out with the pearl script `Filter_Fastq_On_Mean_Quality.pl` from South-GreenPlatform (Minimum mean quality allowed for a read = 30, Minimum length allowed for a read = 35). The reads were mapped on the pearl millet reference genome sequence using BWA [13, 14]. Picard-tools-1.119 and Genome Analysis ToolKit (GATK-3.6 algorithm UnifiedGenotyper) softwares were used to create the vcf file. SNPs were filtered out based on missing percentage (<50% missing), homozygosity (inbreeding $F > 0.5$) and minor allele frequency (MAF $\geq 5\%$).

Population structure analysis

A neighbor joining (NJ) phylogenetic tree was generated with TASSEL v5.2.39. Population structure was assessed with a random subset, with one SNP/100kb using the program sNMF. Five runs were performed for a given number of group (K) and the values with the smallest Cross-Entropy for each K were selected to generate the structure graph.

Genome wide association study (GWAS)

Marker-trait associations were established using pearl millet inbred lines phenotyped for 11 agromorphological traits under two conditions (early drought stress and well-watered) and in

two years (2015 and 2016). For each year, we performed GWAS with a mixed model correcting for genetic relatedness (kinship matrix) using the R package GAPIT (Genome Association and Prediction Integrated Tool; [15, 16]). The p -values obtained for both years were combined using a Fisher combining probability method [17]. We considered a *False Discovery Rate* (FDR , threshold = 0.1) in determining the significant SNPs.

Results

Phenotypic variation under well-watered and early drought stress conditions

In order to evaluate pearl millet response to early drought stress, a panel of 188 inbred lines was characterized on well-watered (WW) and early drought stress (DS) conditions on two successive years in Bambey, Senegal. In the well-watered treatment, the fraction of transpirable soil water (FTSW) was generally above 40% along the soil profile (0–120 cm) across the experiment in both years, indicating that water was not limiting for plant growth (S4 Fig; [18]). In early drought stress treatments, FTSW was below 40% in 0–60 cm soil profiles at 40 days after sowing (DAS) in 2015 and at 49 days in 2016. This measure indicated efficient field dry-down and imposition of water limiting conditions at vegetative stage (S4 Fig). In 2015, water remained limiting for plant growth (FTSW below 40%) along the soil profile (0–120 cm) until around 110 DAS, extending the water-limiting period to the reproductive stage. In 2016, irrigation of the field at 49 DAS allowed increase in FTSW to around 40% at 55 DAS between 60–120 cm, although short periods of water limiting conditions appeared at reproductive stage (around 75 and 85 DAS). In both 2015 and 2016, canopy temperature measured 30 days after the start of the dry-down was significantly increased in the drought stress treatment as compared to the well-watered treatment (ANOVA, $p < 0.001$), indicating that plants were indeed subjected to drought stress (S5 Fig).

In order to evaluate the impact of early drought stress, a total of 11 agromorphological traits were measured at the seed maturation stage (Table 1). For most of the traits, a large range of variation was detected, with the coefficients of variation (CV) varying from 8.2% for stay-green under well-watered conditions to 98.6% for total grain weight under drought stress conditions. Most of the traits showed a normal distribution (S6 Fig) apart from flowering date that was flatter than a normal distribution (negative kurtosis). For each trait, each year and all conditions, variance analyses showed a strong significant genetic effect on phenotypic variation (Table 2). A high correlation was found between results obtained in the two successive years both for well watered (WW) and drought stress (DS) conditions indicating that the response was comparable in both years (Fig 1). Analyses of relation between traits showed that some traits were highly correlated (Fig 2 and S2 Table) such as total grain number and total grain weight. Correlated traits under drought stress conditions were generally also correlated under well-watered conditions (correlation of correlation coefficients, $r > 0.8$, $p < 10^{-12}$, Fig 2C and 2D and S2 Table).

In order to evaluate drought effects on agromorphological traits, values measured under drought stress were divided by values measured under well-watered conditions for each trait in both years (Table 3). Drought stress led to a strong and very significant reduction in plant height, above ground biomass, total grain number and weight on both years (Table 3). Panicle length, stalk length and number of leaves were moderately reduced under drought stress. On the contrary, stay green increased slightly but significantly under drought stress on both years. However, the very low harvest index and the failure of some lines to set seeds suggest that the sink demand from grain was low and therefore the observed effect might not be related to a functional stay-green character, i.e. transition from carbon capture to nitrogen remobilization [19]. Flowering date and weight of 1000 grains were unevenly affected on the two years,

Table 1. Variations of agro-morphological traits in the pearl millet inbred panel used in this study.

Trait	Description	Year	Range		Mean		SD		CV	
			WW	DS	WW	DS	WW	DS	WW	DS
DSFLO	Flowering date (days after sowing)	2015	47–97	46–105	63.82	66.20	10.03	12.29	15.7%	18.6%
		2016	39–99	48–94	70.16	69.61	11.78	11.07	16.8%	15.9%
STG	Stay green (# green leaves/NFT)	2015	0–0.645	0–0.571	0.35	0.39	0.11	0.10	32.7%	24.6%
		2016	0.261–0.632	0.412–0.86	0.52	0.57	0.04	0.08	8.2%	14.3%
HSP	Height of the plant (cm)	2015	56–273	22–251	158.45	115.53	41.49	40.24	26.2%	34.8%
		2016	39–262	28.3–435	140.56	108.88	48.46	40.50	34.5%	37.2%
Lpan	Length of the panicle (cm)	2015	5.2–86	0–67.7	32.73	30.33	12.30	11.36	37.6%	37.5%
		2016	11.3–65	7.75–67	32.21	30.45	12.13	11.82	37.7%	38.8%
Lped	Stalk length (cm)	2015	3–45.2	0–49.2	27.01	25.26	6.78	8.40	25.1%	33.3%
		2016	10.3–59.2	6–40.5	26.09	22.34	6.74	6.49	25.8%	29%
NFT	Number of leaves	2015	10.7–28	10.7–24	17.09	16.10	3.12	2.65	18.3%	16.4%
		2016	7.67–26.3	11–26.3	17.95	17.81	3.95	3.32	22%	18.6%
BSA	Aerial biomass (g)	2015	83.5–2795	48.5–2087	440.20	241.48	281.25	173.20	63.9%	71.7%
		2016	51–2425	13.7–1617	385.07	218.83	269.54	172.80	70%	79%
PGR	Total grain weight (kg/ha)	2015	0–710	0–150	60.41	29.05	59.55	26.48	98.6%	91.1%
		2016	0.367–514.9	0–253.4	72.47	39.14	57.21	30.70	78.9%	78.4%
IR	Harvest index	2015	0–0.481	0–0.554	0.15	0.16	0.11	0.14	73.3%	86.8%
		2016	0.002–0.648	0–0.7548	0.22	0.21	0.11	0.11	53%	54.8%
PMG	Weight of 1000 grains (kg)	2015	2.9–12.5	2.13–11.3	7.44	6.95	1.75	1.61	23.5%	23.3%
		2016	4.105–14	4.25–12.6	8.03	8.04	1.85	1.44	23%	17.9%
NGR	# of grains per plant	2015	864–108673	119–22832	10121.46	5699.75	8222.41	3428.33	81.2%	60.1%
		2016	576–68445	254–30826	9126.03	4594.69	6875.02	3557.93	75.3%	77.4%

<https://doi.org/10.1371/journal.pone.0201635.t001>

showing either small or no variation under early drought stress. Harvest index (HI) was not significantly affected by drought on both years. Hence, early drought stress led to a reduction both in biomass and number of grains leading to reduced yield (but not in HI and grain weight). No change in individual grain weight was observed.

The loss in grain production under drought stress conditions was very variable among lines and years. Some lines did not produce grain under drought stress even if their panicle length and aboveground biomass were within the same range as yielding plants. This suggests that drought stress applied at the juvenile phase impacts seed production at later stages. On the

Table 2. Analysis of variance and genetic effect on phenotypic variation for staygreen in well-watered conditions in 2015 and 2016.

Trait		df	mean squares	F value
STG WW 2015	unadjusted block	69	0.0251	
	genotype	299	0.0144	11.08***
	control	1	0.000722	0.553
	residuals	90	0.00130	
STG WW 2016	unadjusted block	69	0.00349	
	genotype	288	0.00197	16.49***
	control	1	0	0
	residuals	73	0.000120	

Significance codes:

***p-value <1e-16, STG = stay green, WW = well-watered, df = degree of freedom

<https://doi.org/10.1371/journal.pone.0201635.t002>

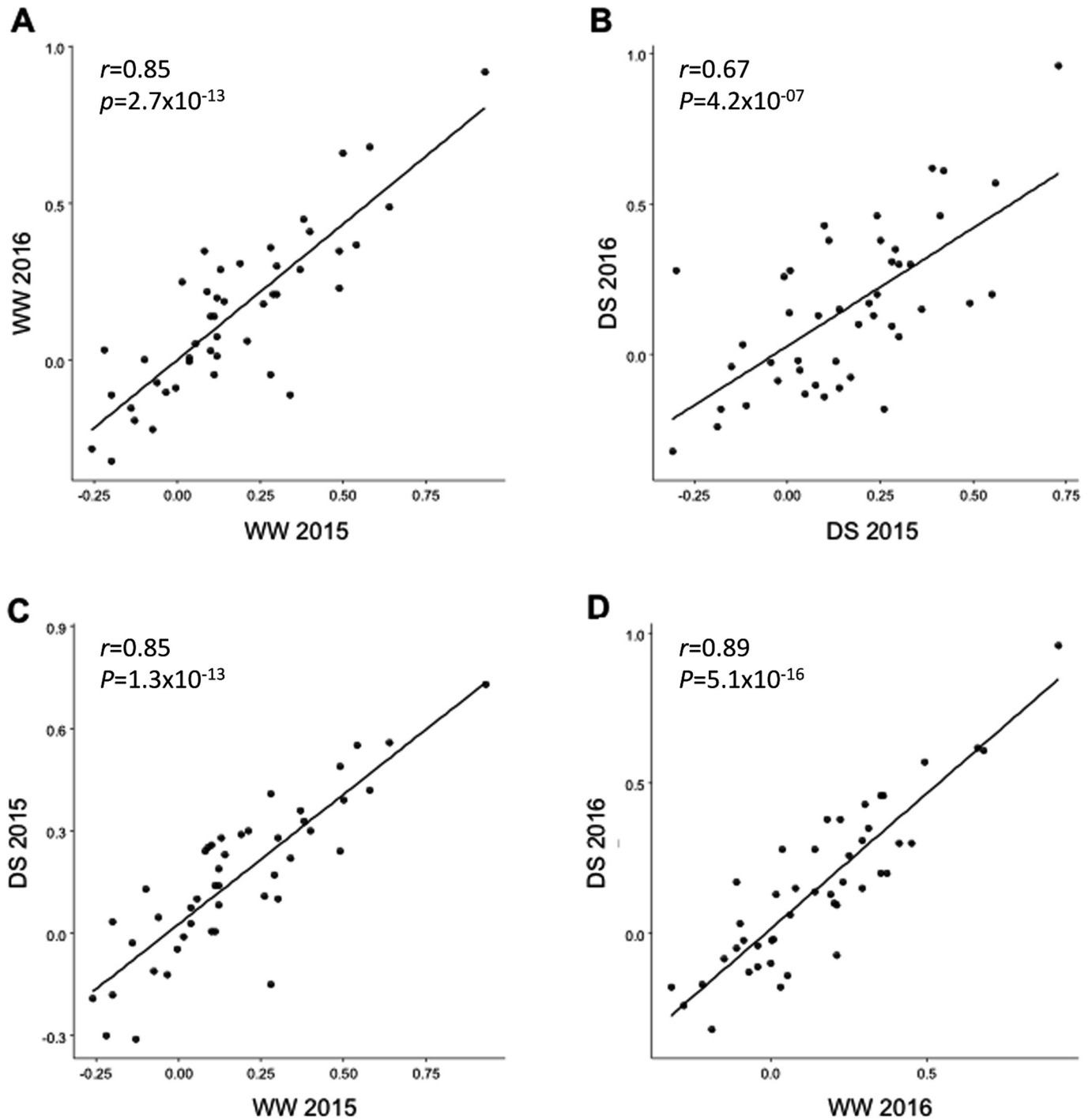
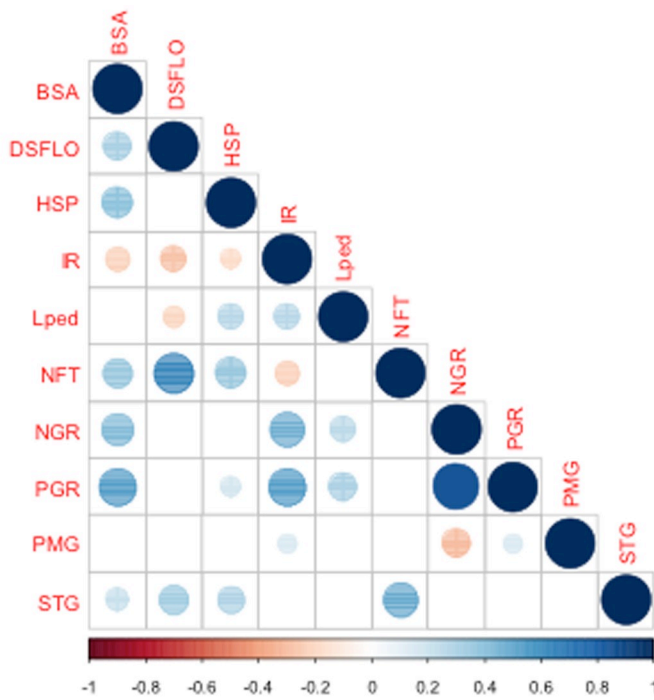


Fig 1. Correlations between agro-morphological traits. Plots of the coefficients of correlation calculated between agro-morphological traits per pairs. For each graph 45 correlation coefficients associated to 45 pairs of agro-morphological traits obtained in different conditions or at different dates were compared among 188 pearl millet lines. The traits were measured in the field in Bambeby in 2015 and 2016 with and without drought stress applied during 30 days from 21 days after sowing A. Plot comparing the coefficients without stress in 2015 and 2016 B. Plot comparing the coefficients with drought stress in 2015 and 2016. C. Plot comparing the coefficients with and without drought stress in 2015 D. Plot comparing the coefficients with and without drought stress in 2016.

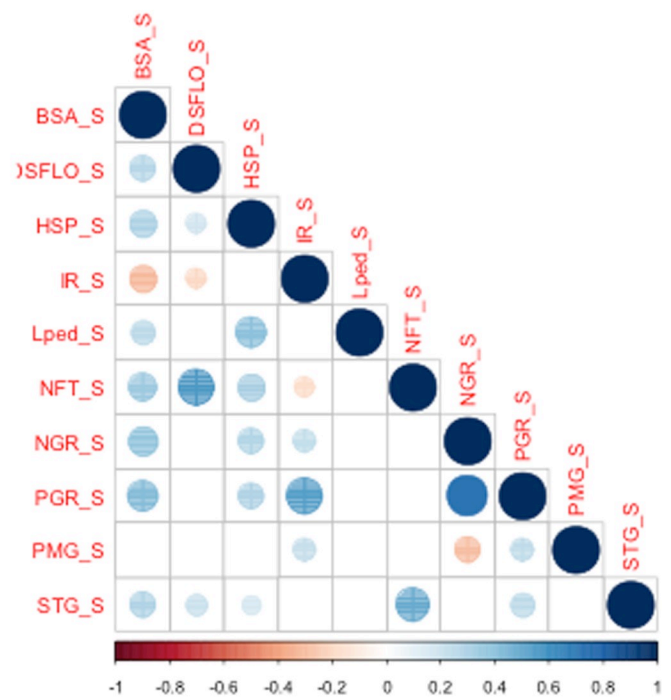
<https://doi.org/10.1371/journal.pone.0201635.g001>

contrary some genotypes performed well under drought. Some lines showed consistent performance across the two years, such as ICML-IS 11194 or ICL-IS 11024 that had a high DS/WW

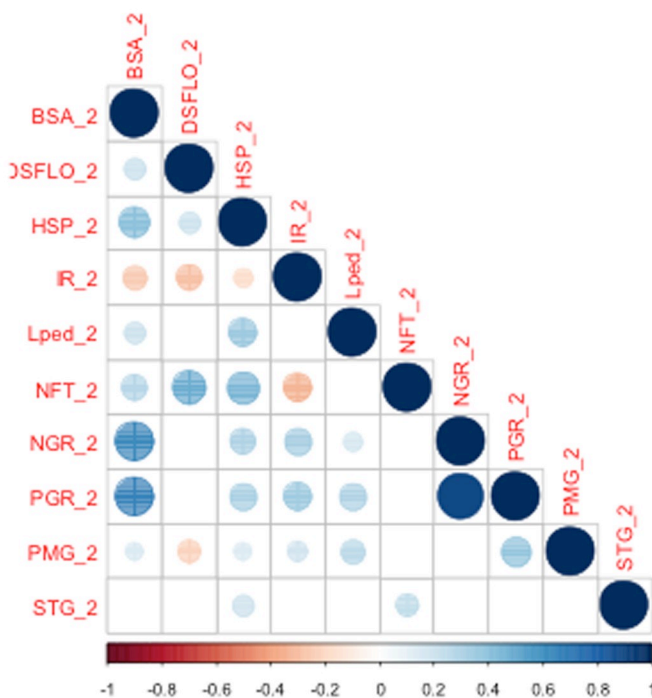
A WW 2015



B DS 2015



C WW 2016



D DS 2016

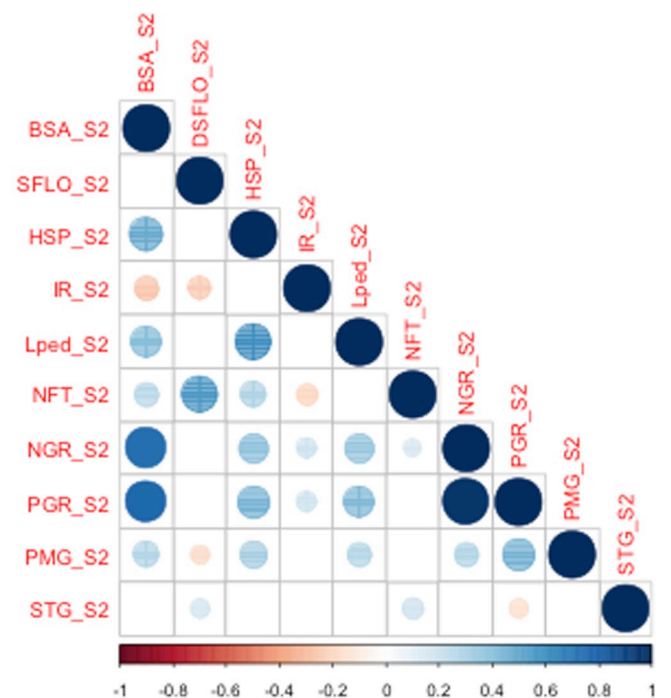


Fig 2. Correlations between agro-morphological traits per pair measured in the field in Bambeby in 2015 and 2016 with and without drought stress. A. No stress in 2015 B. With drought stress for 30 days at 21 days after sowing in 2015 C. No stress in 2016 D. With hydric stress in 2016. The correlation coefficients are represented by a circle, its size and the strength of its color are proportional to the strength of the correlation. Red and blue indicate negative and positive correlations respectively.

<https://doi.org/10.1371/journal.pone.0201635.g002>

ratio for aerial biomass (BSA) and total grain weight (PGR) in both years. On the other hand, ICML-IS 11066 had low PGR ratios in both years.

Altogether, our data indicate that response to early drought stress was variable in our panel but conserved across lines between the two experiments. This suggests that this population could be used to identify QTLs/genes involved in early drought tolerance through phenotype/genotype association analyses and could be a source of potential donor lines for drought tolerance.

Genotypes and population structure

In order to perform genetic association, we generated GBS data on the 188 lines and obtained a total of 3,168,971 unfiltered single nucleotide polymorphisms (SNPs). Filtering on quality led to 392,493 SNPs. The average SNP density was 2.5 per 10 kb.

SNPs were first used to assess the population structure in the panel. The cross-validation error reached a minimum for $K = 1$ suggesting only a single genetic group (S7 Fig). The unweighted neighbor-joining (NJ) tree constructed to illustrate the phylogenetic structure of the panel (Fig 3) displayed also a weak structuration signal. Altogether, this indicates that our panel has a negligible genetic structure.

Table 3. Impact of drought stress on agro-morphological traits in pearl millet.

Trait code	Trait definition	Year	Mean		Ratio DS/WW	p-value
			WW	DS		
DSFLO	Flowering date (days after sowing)	2015	63.82	66.20	1.037	0.00389
		2016	70.16	69.61	0.992	0.52690
STG	Staygreen (nb green leaves/total number leaves)	2015	0.35	0.39	1.115	1.969E-07
		2016	0.52	0.57	1.087	1.192E-18
HSP	Height of the plant	2015	158.45	115.53	0.729	1.699E-41
		2016	140.56	108.88	0.775	5.909E-19
Lpan	Length of the panicle	2015	32.73	30.33	0.927	0.00701
		2016	32.21	30.45	0.945	0.04974
Lped	Stalk length	2015	27.01	25.26	0.935	0.00255
		2016	26.09	22.34	0.856	1.344E-13
NFT	Number of leaves	2015	17.09	16.10	0.942	2.845E-06
		2016	17.95	17.81	0.992	6.154E-01
BSA	Aerial biomass	2015	440.20	241.48	0.549	1.296E-25
		2016	385.07	218.83	0.568	9.547E-21
PGR	Total grain weight	2015	60.41	29.05	0.481	1.408E-17
		2016	72.47	39.14	0.540	4.877E-20
IR	Harvest index	2015	0.15	0.16	1.040	0.53120
		2016	0.22	0.21	0.959	0.31683
PMG	Weight of 1000 grains	2015	7.44	6.95	0.934	0.00143
		2016	8.03	8.04	1.001	0.93140
NGR	Number of grains per plant	2015	10121.46	5699.75	0.563	1.436E-14
		2016	9126.03	4594.69	0.503	3.463E-22

Bold numbers correspond to significant differences ($p < 0.01$). WW: well-watered; DS: early drought stress.

<https://doi.org/10.1371/journal.pone.0201635.t003>

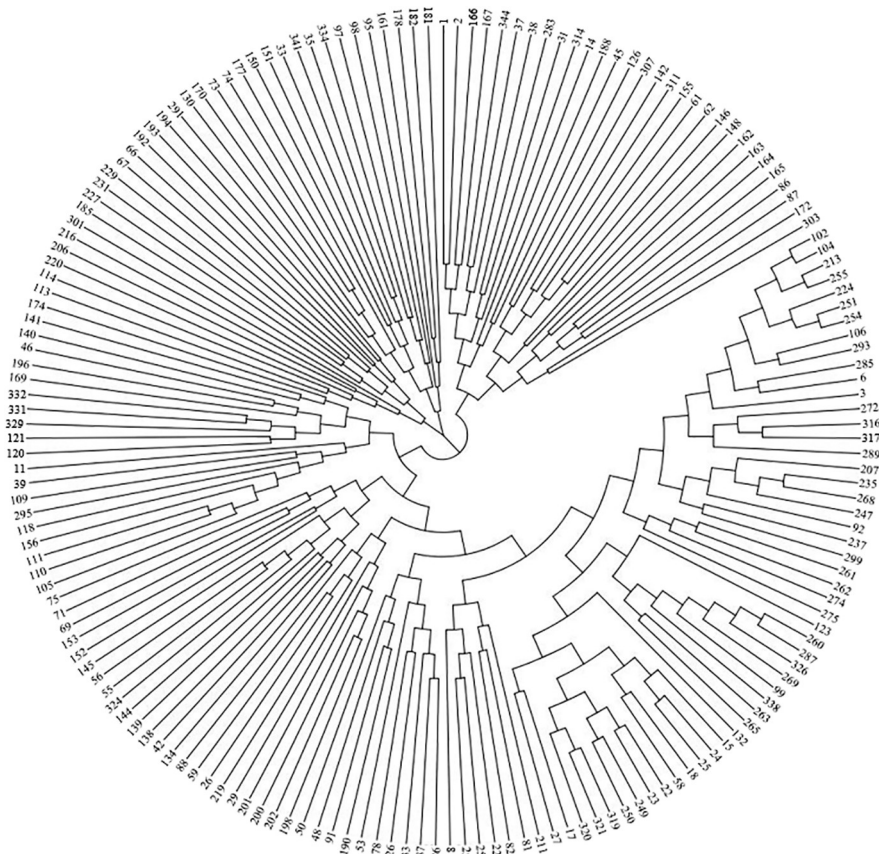


Fig 3. Genetic structure of the inbred panel. NJ tree based on 392 493 SNPs genotyped for 175 pearl millet lines used for GWAS. Thirteen plants were removed because their genotypic data did not pass quality filter tests.

<https://doi.org/10.1371/journal.pone.0201635.g003>

Genome wide association study (GWAS)

Genetic association (GWAS) was conducted on 175 inbred lines presenting both genetic and phenotypic data. A total of thirteen plants were removed because their genotypic data did not pass filter quality tests. GWAS was performed on all phenotypic traits measured in two years (2015 and 2016) in WW and DS conditions. The most significant associations (p -value $< 10^{-5}$) detected in the GWAS study are listed in Table 4. The *FDR* for the associations ranged from 0.0001 to 1, with 10 associations having a *FDR* < 0.1 .

In WW conditions, we identified four marker-trait associations (MTAs) for the stay-green character on chromosome 6 (Fig 4 and Table 4). These four MTAs corresponded to two different polymorphisms located at the same position. The stay-green MTA explained 12% of phenotypic variation in the panel in 2015 and a difference of 25% in phenotype was observed between the two alleles (Fig 5). The corresponding polymorphisms were mapped at position 111262313 on chromosome 6 of the pearl millet reference genome [2]. It corresponded to a peak of SNPs/stay green association (Fig 5). Interestingly, this locus falls within a predicted gene (*Pgl_GLEAN_10-013220*) encoding a potential uroporphyrin-III C-methyltransferase (UPM), an enzyme involved in sirohaem and cobalamin biosynthetic pathway. Sirohaem is an essential cofactor involved in inorganic sulfur (S) and nitrogen (N) assimilation in plants [20]. No significant association was found in DS conditions but as reported above it might be due to the failure of some lines to set seeds leading to reduced sink demand from grain preventing leaf senescence.

Table 4. GWAS results for the STG and BSA traits.

Trait	SNP	p-value	FDR
STG WW	S6_111262313	1.21603721219283E-08	0.0011794223317337
	S6_111262313	1.21603721219283E-08	0.0011794223317337
	S6_111262313	1.21603721219283E-08	0.0011794223317337
	S6_111262313	1.21603721219283E-08	0.0011794223317337
BSA WW	S2_39226211	3.87647802274037E-06	0.300780581558053
	S4_7055089	8.28674626745573E-07	0.243010166841778
	S3_296405038	0.0000031432340876036	0.243010166841778
	S3_198858285	3.19038839876643E-06	0.243010166841778
	S2_86538637	3.91673493887862E-06	0.243010166841778
	S5_145140900	4.87502023610317E-06	0.243010166841778
	S5_145140930	4.87502023610437E-06	0.243010166841778
	S3_76894947	5.46038729608676E-06	0.243010166841778
	S1_49962404	0.0000061327667976599	0.243010166841778
	S1_49962418	0.0000061327667976599	0.243010166841778
	S3_291115205	6.26385896446448E-06	0.243010166841778
	S3_52232262	6.90137412656471E-06	0.243402681876867
BSA DS	S3_216179591	1.39620607372396E-07	0.0180478716512176
	S3_216179589	1.39620607372664E-07	0.0180478716512176
	S3_216179592	1.39620607372664E-07	0.0180478716512176
	S2_17262004	8.76503964281349E-07	0.0849750872031571
	S6_64437341	1.15391405443036E-06	0.0894954970163208
	S6_157567763	1.39315363532677E-06	0.0900420735661673
	S3_9915484	6.92725725514157E-06	0.255010678611073
	S3_13047576	7.37303256795503E-06	0.255010678611073
	S3_13047576	7.37303256795503E-06	0.255010678611073
	S3_13047576	7.37303256795503E-06	0.255010678611073
	S3_13047576	7.37303256795503E-06	0.255010678611073
	S3_13047576	7.37303256795503E-06	0.255010678611073
	S5_128247865	8.64005390799752E-06	0.255010678611073
	S5_89968400	9.51014659847111E-06	0.255010678611073

STG = stay green, BSA = aerial biomass. Markers with $p < 10^{-5}$ are shown and those with $FDR < 0.1$ appear in bold.

<https://doi.org/10.1371/journal.pone.0201635.t004>

Six significant associations were detected for biomass on chromosomes 2, 3 and 6 in DS conditions (Fig 4 and Table 4). However, one inbred line had high BSA under DS (Fig 6) and the associations were lost when this line was removed from the analysis. Three of these associated SNPs were very closely located at position 216,179,589, 216,179,591 and 216,179,592 on chromosome 3. These markers explained 19% of the phenotypic variation in the panel. The 3 SNPs were located between two predicted genes *Pgl_GLEAN_10034145* and *Pgl_GLEAN_10034146* encoding a putative 3-ketoacyl-CoA synthase and an unknown protein respectively. 3-ketoacyl-CoA synthases are involved in elongation of C24 fatty acids, an essential condensing step during wax and suberin biosynthesis [21]. Comparison of the genome sequence of pearl millet and other cereals revealed an expansion of gene families involved in wax and suberin biosynthesis that was proposed to have contributed to pearl millet adaptation to drought and heat stress [2]. Accordingly, changes in wax and/or suberin biosynthesis linked to a 3-ketoacyl-CoA synthase encoding gene might be responsible for quantitative changes in biomass under drought stress conditions as observed in our field trials.

The association on chromosome 2 was mapped at position 17,262,004. It explained 14% of the phenotypic variation in the panel (Fig 6). The SNP is located in the predicted gene

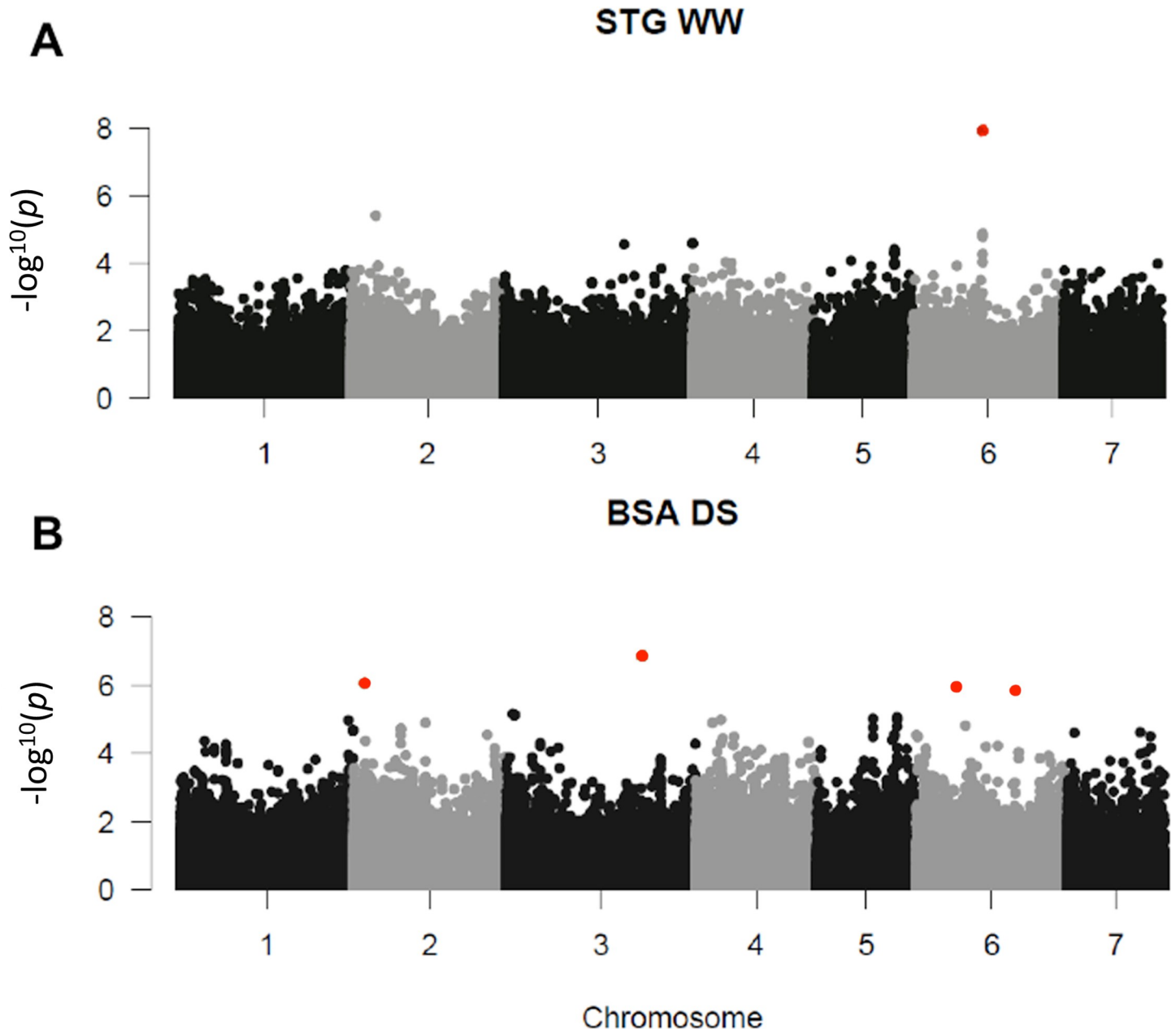


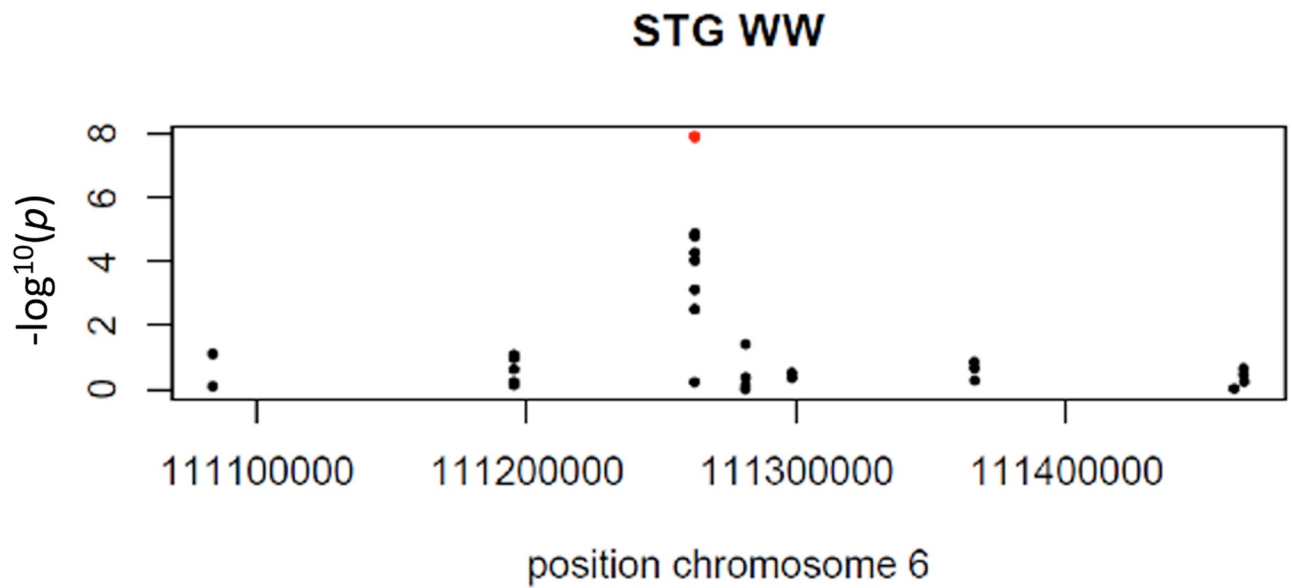
Fig 4. Significant associations for STG and BSA. The whole-genome was scanned using 392,493 SNPs for association with $MAF > 0.05$. p -values of both years (2015 and 2016) for each trait and each condition were combined using fisher combining probability test. Red dots indicates FDR adjusted p -value < 0.1 . A: Manhattan plot for STG in condition WW. B: Manhattan plot for BSA in condition DS.

<https://doi.org/10.1371/journal.pone.0201635.g004>

Pgl_GLEAN_10005405 that encodes a putative chloroplastic threonine dehydratase. This enzyme catalyzes the formation of alpha-ketobutyrate from threonine. This catabolic reaction might change the amino acid metabolism in response to stress and facilitate photorespiration. Photorespiration is known to sustain CO_2 fixation capacity in conditions of water stress and to improve drought tolerance in cereals [22].

Two SNPs on chromosome 6 were significantly associated with biomass production in early drought stress conditions. The first one was mapped at position 64,437,341, between two

A



B

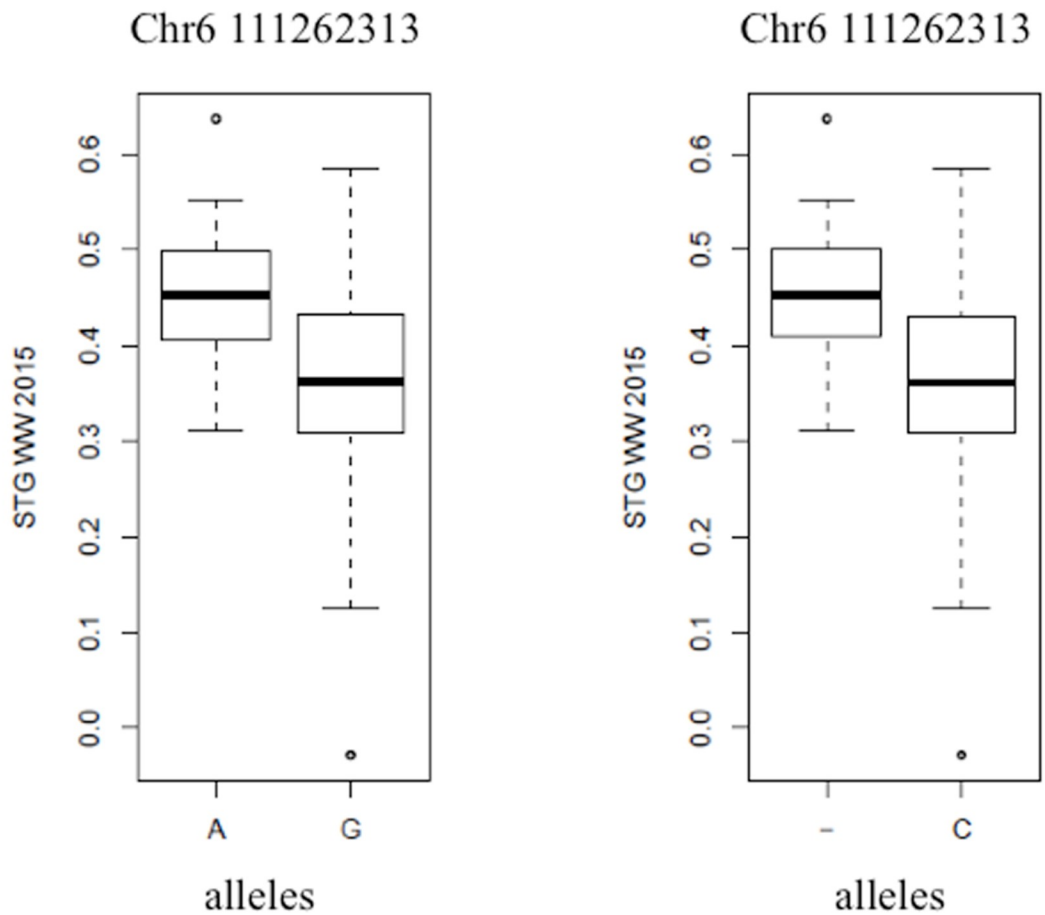


Fig 5. Significant association for STG. A: Zoom in on chromosome 6 position 111,262,313 of the STG WW Manhattan plot. B: Box plots showing phenotypic difference for STG between the two alleles A/G and deletion/C considering one dominant allele respectively “A” and “-” (deletion) at the significant marker on chromosome 6 position 111,262,313.

<https://doi.org/10.1371/journal.pone.0201635.g005>

predicted genes *Pgl_GLEAN_10037360* and *Pgl_GLEAN_10037359* encoding an unknown protein and a SPA1-related 3 protein homolog. The SPA proteins contain serine/threonine kinase-like and WD40 protein domains and are involved in signal transduction during photomorphogenesis [23]. It has been shown that SPA1 modulates MYC2-mediated ABA and JA responses [24] that are known regulators of plant response to stresses including drought. This association explained 14% of the phenotypic variation in the panel (Fig 6). The second SNP associated with biomass production under drought was located at position 157,567,763 between two predicted genes *Pgl_GLEAN_10036945* and *Pgl_GLEAN_10036946* encoding an unknown protein and a putative E3 SUMO-protein ligase respectively. E3 SUMO-protein ligases regulate protein sumoylation and have been involved in tolerance to a number of abiotic stresses including drought [24]. In Arabidopsis, E3 SUMO-protein ligase SIZ1 contributes to the accumulation of SUMO-protein conjugates induced by drought stress [25]. Moreover, SIZ1 was demonstrated to regulate growth and drought stress response [25] as well as abscisic acid signaling [26].

Discussion

As little is known about the impact of early drought episodes in pearl millet, we analyzed the response of a panel of 188 pearl millet inbred lines to drought stress during the juvenile phase for two years in field conditions in Senegal. Drought stress was applied from 21 days after germination (DAG) to 49 DAG. One drawback of such approach is that while the stress was applied at the same fixed time for all lines, we have a large diversity of flowering time in our panel and all plants did not therefore face stress at the exact same developmental stage. However, the earliest flowering genotypes in our panel flowered at 47 or 39 DAG in well-watered environment and at 46 or 48 DAG in drought environment depending on the year. Beginning of flowering therefore corresponded almost to the end of drought stress for the early flowering lines. The mean flowering time in our panel was 66 and 69 for the two years respectively for drought stress treatment, so between 17 to 20 days after the end of the stress. Consequently, the majority of the lines flowered after drought stress. Accordingly, we did not find any significant relation between flowering time and PGR (grain yield) or panicle length under stress in both years. One strategy to avoid such issue would have been to work with groups of lines having similar flowering time but this would have limited the number of lines available for analysis and therefore the potential genetic diversity usable for gene discovery.

We found that early drought stress led to a reduction in both grain and biomass production. Limited change in grain weight (as would be expected for a terminal drought stress) was observed only one year out of two suggesting that most pearl millet lines were able to adapt their biomass to water availability in order to produce a limited number of viable seeds. Yield loss in early drought stress conditions was very variable among lines. Some lines did not produce grain under drought stress even if their panicle length and aboveground biomass were within the same range as yielding plants. On the other hand, some lines did perform better in drought stress conditions. Nevertheless, our results clearly show that drought episodes during the vegetative phase of the plants can have a dramatic impact on yield even if water is available during the end of the cycle. By reducing water availability at this early stage, plants were facing drought stress during the juvenile phase, when the young panicle develops, deep inside the meristem. How this impacts seed formation later in the cycle when water supply remains to be deciphered.

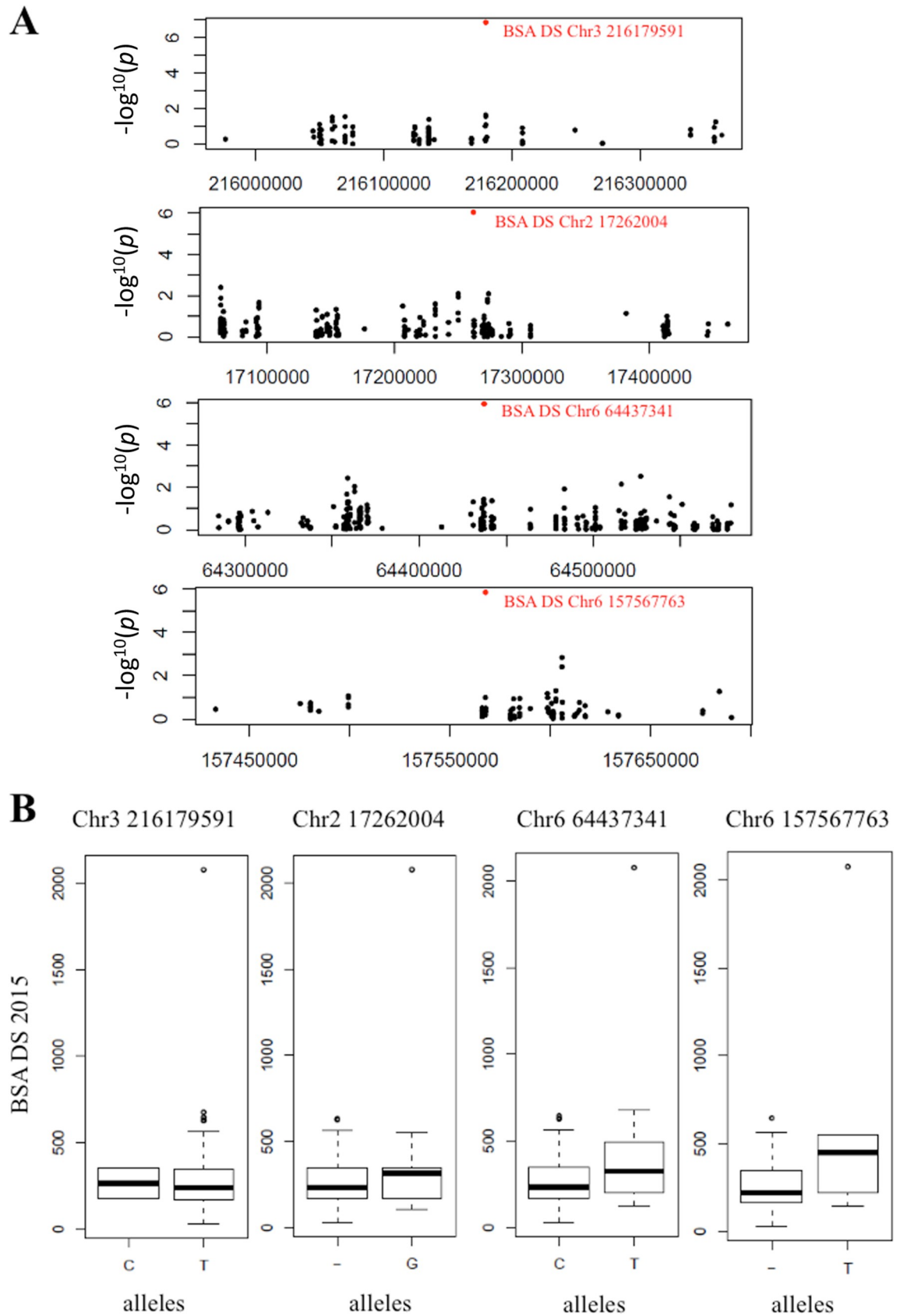


Fig 6. Significant associations for BSA under drought stress. A: Manhattan plots, zoom in on chromosomes 2, 3 and 6 for each significant association of BSA DS. B: Box plots showing phenotypic difference for BSA between the two alleles at these positions: 216,179,591 of chromosome 3, 17,262,004 of chromosome 2, 64,437,341 and 157,567,763 of chromosome 6, considering the allele at lowest frequency as dominant.

<https://doi.org/10.1371/journal.pone.0201635.g006>

We exploited the phenotypic diversity observed in our panel to perform GWAS to uncover the genetic bases of tolerance to early drought stress in pearl millet. We identified 10 SNPs associated with stay-green and biomass phenotypes corresponding to five potential QTLs. As pearl millet biomass is increasingly used as fodder, biomass quantity and quality (of which stay-green is an important character) are becoming important targets for breeding. Moreover, changing temperature and photoperiod associated to climate change are known to impact senescence [27]. Regulation of stay-green is therefore important to design varieties better adapted to future climate in West Africa. Stay-green is linked to the remobilization of N from leaves for grain filling leading to leaf senescence [19]. Slower or inhibited remobilization leads to stay-green and while it is linked with drought stress tolerance in some crops (sorghum for example) this is not always the case [19]. Interestingly, the SNPs associated to stay-green are located in a gene encoding a potential uroporphyrin-III C-methyltransferase (UPM), an enzyme of the sirohaem and cobalamin biosynthetic pathway [28]. Sirohaem is an essential component of the plant sulphite and nitrite reductase enzymes [28, 29]. It has been proposed that enhanced N uptake might contribute to stay-green and drought tolerance in sorghum [30]. Accordingly, increased nitrite reductase activity in tobacco leads to a stay-green phenotype [31]. We can hypothesize that polymorphisms in the UPM gene might impact sirohaem biosynthesis and as a consequence nitrite reductase activity leading to increased nitrogen assimilation and potentially to increased stay green. Further work will be required to test this hypothesis. No significant association was found for stay green in DS conditions but it might be due to the failure of some lines to set seeds leading to reduced sink demand from grain preventing leaf senescence. Interestingly, the harvest index of the germplasm we tested was also relatively low (around 0.15), suggesting that the sink strength of the panicles was limited in comparison to standard elite genotypes. This suggests that the stay-green we measured is not an indication of a drought stress tolerance but rather an indication of the balance of the remobilization process between the reproductive and vegetative organs.

Pearl millet is a tough crop that can survive and yield in harsh low water and high-temperature conditions [2, 3, 8]. As such it is a great model to identify mechanisms involved in drought and heat stress tolerance in cereals. Here we identified four loci associated with increased biomass production under early drought stress. These associations were dependent on the inclusion of one line with a strong BSA phenotype under drought stress so they will need to be confirmed. Genes encoding proteins involved in signal transduction pathways related to drought were found to co-localize with two of these loci while a third associated SNP was found in a gene encoding an enzyme involved in threonine catabolism. The last loci associated with increased biomass under drought stress contained a gene encoding an enzyme (3-ketoacyl-CoA synthase or KCS) that catalyzes the elongation of C24 fatty acids during both wax and suberin biosynthesis [20]. Cuticular waxes are the main transpiration barriers in leaves and a correlation between wax content and drought tolerance has been reported in many crops [32]. Suberin is a polymer made of aliphatic and aromatic compounds and confers hydrophobic characteristic to the walls of certain root cells (in particular in the endodermis), providing barrier properties against water diffusion [33]. It has been associated with drought tolerance in some species. For instance, the Arabidopsis *enhanced suberin 1 (esb1)* mutant, characterized by twofold increased root suberin content, has increased water-use efficiency and drought tolerance [34, 35]. Suberin deposits have been observed in the endodermis and exodermis in

pearl millet roots [36]. Interestingly, the gene families related to wax, cutin and suberin biosynthesis and transport are expanded in pearl millet compared to other cereal crops [2]. It has been proposed that this might have contributed to heat and drought tolerance in pearl millet [2, 3]. The KCS gene in the locus associated to biomass production under early drought stress might be related to these tolerance mechanisms. The material we identified in this study will be instrumental to test this hypothesis and it will be interesting to analyze in future studies the relation between drought tolerance and/or suberin composition and content in lines contrasted for drought tolerance.

In conclusion, our results reveal new potential mechanisms regulating response to drought stress and the stay green trait in pearl millet and might contribute to breed pearl millet lines with improved yield and drought stress tolerance.

Supporting information

S1 Fig. Field experimental set up (2015). Plants were organized in 70 blocks with 20 plants per block along 18 rows and 24 columns. A control inbred line (yellow) was installed regularly to correct for soil heterogeneity in the field.

(TIFF)

S2 Fig. Field experimental set up (2016). Plants were organized in 70 blocks with 20 plants per block along 18 rows and 24 columns. A control inbred line (yellow) was installed regularly to correct for soil heterogeneity in the field.

(TIFF)

S3 Fig. Example of spatial correction of Lped for the DS trial of 2016 with SpATS. A: Original data (stalk length in cm) plotted against row and column positions in the field. Plots corresponding to control line appear in diagonal, according to field experimental setup (S1 and S2 Figs). B: Value estimated by the model, taking into account spatial and genetic effect. C: Residuals of the model, spatially independent. D: Fitted spatial trend. E: Genotypic BLUEs (best linear unbiased estimates) F: Histogram of BLUEs.

(TIFF)

S4 Fig. Fraction of transpirable soil water (FTSW) in the well-watered (WW) and drought stress (DS) treatments in 2015 and 2016. Volumetric soil moisture (VSM) was monitored along the soil profile (0–60 cm and 60–120 cm) at different locations inside the field by frequency domain reflectometry through PVC pipes (Diviner 2000, Sentek Sensor Technologies, SA, Australia) and converted as percent of FTSW as follow: $(VSM_{act} - VSM_{min}) / (VSM_{max} - VSM_{min})$ where VSM_{act} is the actual averaged VSM values measured every 10 cm between 0–60 and 60–120 cm, VSM_{max} is the maximum VSM value observed in the WW treatment and VSM_{min} is the minimum VSM value observed in the DS treatment. The dashed red line represents the FTSW of 40% below which the water is considered as limiting for pearl millet growth. Points represent mean ($n = 4-10$) \pm se.

(TIFF)

S5 Fig. Changes in canopy temperature between well-watered (WW) and drought stress (DS) treatments in 2015 and 2016. Canopy temperature (CT) was measured on a sunny day (at 51 DAS in 2015 and 2016) typically between 11AM and 12PM on two leaves per plot. Averaged CT values for all genotypes within one treatment of one experiment were used to prepare boxplot. ***: p -value < 0.001 using ANOVA statistical test.

(TIFF)

S6 Fig. Distribution of agromorphological characters for 2015 WW (A), 2015 DS (B), 2016 WW (C) and 2016 DS (D).

(TIFF)

S7 Fig. Graph of Cross-Entropy calculated for population structure from one to 20 groups.

(TIFF)

S1 Table. List and pedigree of inbred lines used in this study.

(XLSX)

S2 Table. Corrected field trials data.

(XLSX)

Acknowledgments

This work was supported by the IRD, the French Ministry for Research and Higher Education (PhD grant to SP) and the NewPearl grant in the frame of the CERES initiative by the Agropolis Fondation (N° AF 1301–015 to LL, as part of the "Investissement d'avenir" ANR-10-LABX-0001-01) under the frame of I-SITE MUSE (ANR-16-IDEX-0006) and by the Fondazione Cariplo (N° FC 2013–0891).

Author Contributions

Conceptualization: Marilyne Debieu, Bassirou Sine, Sixtine Passot, Prakash Gangashetty, Pascal Gantet, Laurent Cournac, Charles Tom Hash, Ndjido Ardo Kane, Yves Vigouroux.

Data curation: Marilyne Debieu, Bassirou Sine, Sixtine Passot, Alexandre Grondin, Eyanawa Akata, Vincent Vadez, Yves Vigouroux.

Formal analysis: Marilyne Debieu, Bassirou Sine, Sixtine Passot, Alexandre Grondin, Eyanawa Akata, Prakash Gangashetty, Vincent Vadez, Laurent Cournac, Yves Vigouroux, Laurent Laplaze.

Funding acquisition: Ndjido Ardo Kane, Yves Vigouroux, Laurent Laplaze.

Investigation: Marilyne Debieu, Bassirou Sine, Sixtine Passot, Laurent Cournac, Laurent Laplaze.

Project administration: Bassirou Sine, Laurent Cournac, Yves Vigouroux, Laurent Laplaze.

Resources: Prakash Gangashetty, Charles Tom Hash.

Supervision: Pascal Gantet, Daniel Foncéka, Laurent Cournac, Charles Tom Hash, Ndjido Ardo Kane, Yves Vigouroux, Laurent Laplaze.

Writing – original draft: Marilyne Debieu, Bassirou Sine, Sixtine Passot, Alexandre Grondin, Vincent Vadez, Laurent Cournac, Yves Vigouroux, Laurent Laplaze.

Writing – review & editing: Pascal Gantet, Daniel Foncéka, Laurent Cournac, Charles Tom Hash, Ndjido Ardo Kane, Yves Vigouroux, Laurent Laplaze.

References

1. Oumar I, Mariac C, Pham JL, Vigouroux Y. Phylogeny and origin of pearl millet (*Pennisetum glaucum* [L.] R. Br) as revealed by microsatellite loci. *Theor Appl Genet.* 2008; 117: 489–497. <https://doi.org/10.1007/s00122-008-0793-4> PMID: 18504539

2. Varshney RK, Shi C, Thudi M, Mariac C, Wallace J, Qi P et al. Pearl millet genome sequence provides a resource to improve agronomic traits in arid environments. *Nat Biotech.* 2017; 35: 969–976. <https://doi.org/10.1038/nbt.3943>.
3. Debieu M, Kanfany G, Laplaze L. Pearl millet genome: lessons from a tough crop. *Trends Plant Sci.* 2017; 22: 911–913. <https://doi.org/10.1016/j.tplants.2017.09.006> PMID: 28939172
4. Sultan B, Gaetani M. Agriculture in West Africa in the twenty-first century: climate change and impacts scenarios, and potential for adaptation. *Front Plant Sci.* 2016; 7: 1–20. <https://doi.org/10.3389/fpls.2016.00001>
5. Bidingier FR, Mahalakshmi V, Rao GDP. Assessment of drought resistance in pearl millet [*Pennisetum americanum* (L.) Leeke]. 1. Factors affecting yield under stress. *Aust J Agric Res.* 1987; 38: 37–48.
6. Yadav RS, Hash CT, Bidingier FR, Cavan GP, Howarth CJ. Quantitative trait loci associated with traits determining grain and stover yield in pearl millet under terminal drought-stress conditions. *Theor Appl Genet.* 2002; 104: 67–83. <https://doi.org/10.1007/s001220200008> PMID: 12579430
7. Kholová J, Hash CT, Kumar PL, Yadav RS, Koová M, Vadez V. Terminal drought-tolerant pearl millet [*Pennisetum glaucum* (L.) R. Br.] have high leaf ABA and limit transpiration at high vapour pressure deficit. *J Exp Bot.* 2010; 61: 1431–1440. <https://doi.org/10.1093/jxb/erq013> PMID: 20142425
8. Serba DD, Yadav RS. Genomic tools in pearl millet breeding for drought tolerance: status and prospects. *Front Plant Sci.* 2016; 7: 1–10. <https://doi.org/10.3389/fpls.2016.01724>
9. Boncompagni E, Orozco-Arroyo G, Cominelli E, Gangashetty PI, Grando S, Kwaku Zu TT et al. Antinutritional factors in pearl millet grains: Phytate and goitrogens content variability and molecular characterization of genes involved in their pathways. *PLOS ONE* 2018; 13: e0198394. <https://doi.org/10.1371/journal.pone.0198394> PMID: 29856884
10. Velazco JG, Rodríguez-Álvarez MX, Boer MP, Jordan DR, Eilers PHC, Malosetti M, et al. Modelling spatial trends in sorghum breeding field trials using a two-dimensional P-spline mixed model. *Theor Appl Genet.* 2017; 130: 1375–1392. <https://doi.org/10.1007/s00122-017-2894-4> PMID: 28374049
11. Mariac C, Luong V, Kapran I, Mamadou A, Sagnard F, Deu M, et al. Diversity of wild and cultivated pearl millet accessions (*Pennisetum glaucum* [L.] R. Br.) in Niger assessed by microsatellite markers. *Theor Appl Genet.* 2006; 114: 49–58. <https://doi.org/10.1007/s00122-006-0409-9> PMID: 17047913
12. Elishire RJ, Glaubitz JC, Sun Q, Poland JA, Kawamoto K, Buckler ES, et al. A robust, simple genotyping-by-sequencing (GBS) approach for high diversity species. *PLoS One.* 2011; 6: 1–10. <https://doi.org/10.1371/journal.pone.0019379>.
13. Li H, Durbin R. Fast and accurate short read alignment with Burrows-Wheeler transform. *Bioinformatics.* 2009; 25: 1754–1760. <https://doi.org/10.1093/bioinformatics/btp324> PMID: 19451168
14. Li H, Durbin R. Fast and accurate long-read alignment with Burrows-Wheeler transform. *Bioinformatics* 2010; 26: 589–595. <https://doi.org/10.1093/bioinformatics/btp698> PMID: 20080505
15. Zhang Z, Ersoz E, Lai C, Todhunter RJ, Tiwari HK, Gore M, et al. Mixed linear model approach adapted for genome-wide association studies. *Nat Genet.* 2010; 42: 355–360. <https://doi.org/10.1038/ng.546> PMID: 20208535
16. Lipka AE, Tian F, Wang Q, Peiffer J, Li M, Bradbury PJ, et al. GAPIT: genome association and prediction integrated tool. *Bioinformatics.* 2012; 28: 2397–2399. <https://doi.org/10.1093/bioinformatics/bts444> PMID: 22796960
17. Sokal RR, Rohlf F. J. *Biometry the principles and practice of statistics in biological research.* 3rd ed. New York W.H. Freeman; 1995.
18. Sinclair TR., Ludlow MM. Influence of soil water supply on the plant water balance of four tropical grain legumes. *Funct Plant Biol.* 1986; 13, 329–341. <https://doi.org/10.1071/PP9860329>
19. Thomas H, Ougham H. The stay-green trait. *J Exp Bot.* 2014; 65: 3889–3900. <https://doi.org/10.1093/jxb/eru037> PMID: 24600017
20. Sakakibara H, Takei K, Sugiyama T. Isolation and characterization of a cDNA that encodes maize uroporphyrinogen III methyltransferase, an enzyme involved in the synthesis of heme, which is a prosthetic group of nitrite reductase. *Plant Journal.* 1996; 10: 883–92. PMID: 8953249
21. Bernard A, Joubès J. Arabidopsis cuticular waxes: Advances in synthesis, export and regulation. *Prog Lipid Res.* 2013; 52: 110–129. <https://doi.org/10.1016/j.plipres.2012.10.002> PMID: 23103356
22. Winkler A, Quick WP, Bungard RA, Bailey KJ, Lea PJ, Leegood RC. The role of photorespiration during drought stress: An analysis utilizing barley mutants with reduced activities of photorespiratory enzymes. *Plant, Cell Environ.* 1999; 22: 361–373. <https://doi.org/10.1046/j.1365-3040.1999.00410>
23. Laubinger S, Hoecker U. The SPA1-like proteins SPA3 and SPA4 repress photomorphogenesis in the light. *Plant J.* 2003; 35: 373–385. <https://doi.org/10.1046/j.1365-313X.2003.01813> PMID: 12887588

24. Gangappa SN, Prasad VBR, Chattopadhyay S. Functional Interconnection of MYC2 and SPA1 in the Photomorphogenic Seedling Development of Arabidopsis. *Plant Physiol.* 2010; 154: 1210–1219. <https://doi.org/10.1104/pp.110.163717> PMID: 20864543
25. Catala R, Ouyang J, Abreu IA, Hu Y, Seo H, Zhang X, et al. The Arabidopsis E3 SUMO Ligase SIZ1 Regulates Plant Growth and Drought Responses. *Plant Cell Online.* 2007; 19: 2952–2966. <https://doi.org/10.1105/tpc.106.049981>.
26. Miura K, Lee J, Jin JB, Yoo CY, Miura T, Hasegawa PM. Sumoylation of ABI5 by the Arabidopsis SUMO E3 ligase SIZ1 negatively regulates abscisic acid signaling. *Proc Natl Acad Sci.* 2009; 106: 5418–5423. <https://doi.org/10.1073/pnas.0811088106> PMID: 19276109
27. Bauerle WL, Oren R, Way DA, Qian SS, Stoy PC, Thornton PE, et al. Photoperiodic regulation of the seasonal pattern of photosynthetic capacity and the implications for carbon cycling. *Proc Natl Acad Sci.* 2012; 109: 8612–8617. <https://doi.org/10.1073/pnas.1119131109> PMID: 22586103
28. Tanaka R, Tanaka A. Tetrapyrrole biosynthesis in higher plants. *Annu Rev Plant Biol.* 2007; 58: 321–346. <https://doi.org/10.1146/annurev.arplant.57.032905.105448> PMID: 17227226
29. Crane BR, Siegel LM, Getzoff ED. Structures of the siroheme- and Fe4S4-containing active center of sulfite reductase in different states of oxidation: heme activation via reduction-gated exogenous ligand exchange. *Biochemistry.* 1997; 36: 12101–12119. <https://doi.org/10.1021/bi971065q> PMID: 9315848
30. Borrell AK, Hammer GL, Henzell RG. Does maintaining green leaf area in sorghum improve yield under drought? II. Dry matter production and yield. *Crop Sci.* 2000; 40: 1037–1048. <https://doi.org/10.2135/cropsci2000.4041037>.
31. Davenport S, Le Lay P, Sanchez-Tamburrino JP. Nitrate metabolism in tobacco leaves overexpressing Arabidopsis nitrite reductase. *Plant Physiol Biochem.* 2015; 97: 96–107. <https://doi.org/10.1016/j.plaphy.2015.09.013> PMID: 26447683
32. Xue D, Zhang X, Lu X, Chen G, Chen Z-H. Molecular and evolutionary mechanisms of cuticular wax for plant drought tolerance. *Front Plant Sci.* 2017 2017; 8: 621. <https://doi.org/10.3389/fpls.2017.00621> PMID: 28503179
33. Ranathunge K, Schreiber L. Water and solute permeabilities of Arabidopsis roots in relation to the amount and composition of aliphatic suberin. *J Exp Bot.* 2011; 62: 1961–1974. <https://doi.org/10.1093/jxb/erq389> PMID: 21421706
34. Baxter I, Hosmani PS, Rus A, Lahner B, Borevitz JO, Muthukumar B, et al. Root Suberin Forms an Extracellular Barrier That Affects Water Relations and Mineral Nutrition in Arabidopsis. *PLOS Genet.* 2009; 5: e1000492. <https://doi.org/10.1371/journal.pgen.1000492> PMID: 19461889
35. Franke R, Dombrink I, Schreiber L. Suberin goes genomics: use of a short living plant to investigate a long lasting polymer. *Front Plant Sci.* 2012; 3: 4. <https://doi.org/10.3389/fpls.2012.00004> PMID: 22639633
36. Passot S, Gnacko F, Moukouanga D, Lucas M, Guyomarc'h S, Ortega BM, et al. Characterization of pearl millet root architecture and anatomy reveals three types of lateral roots. *Front Plant Sci.* 2016; 7: 829. <https://doi.org/10.3389/fpls.2016.00829> PMID: 27379124