

RESEARCH ARTICLE

Sea-level rise and archaeological site destruction: An example from the southeastern United States using DINAA (Digital Index of North American Archaeology)

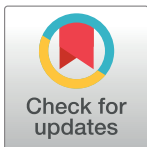
David G. Anderson^{1☉*}, Thaddeus G. Bissett^{2☉}, Stephen J. Yerka^{1☉}, Joshua J. Wells^{3‡}, Eric C. Kansa^{4‡}, Sarah W. Kansa^{4‡}, Kelsey Noack Myers^{5‡}, R. Carl DeMuth^{5‡}, Devin A. White^{6‡}

1 Department of Anthropology, University of Tennessee, Knoxville, Tennessee, United States of America, **2** Department of Anthropology, Northern Kentucky University, Highland Heights, Kentucky, United States of America, **3** Department of Anthropology, Indiana University South Bend, South Bend, Indiana, United States of America, **4** The Alexandria Archive Institute/Open Context, San Francisco, California, United States of America, **5** Department of Anthropology, Indiana University, Bloomington, Indiana, United States of America, **6** Geographic Information Science and Technology Group, Oak Ridge National Laboratory, Oak Ridge, Tennessee, United States of America

☉ These authors contributed equally to this work.

‡ These authors also contributed equally to this work.

* dander19@utk.edu



OPEN ACCESS

Citation: Anderson DG, Bissett TG, Yerka SJ, Wells JJ, Kansa EC, Kansa SW, et al. (2017) Sea-level rise and archaeological site destruction: An example from the southeastern United States using DINAA (Digital Index of North American Archaeology). PLoS ONE 12(11): e0188142. <https://doi.org/10.1371/journal.pone.0188142>

Editor: Peter F. Biehl, University at Buffalo - The State University of New York, UNITED STATES

Received: July 28, 2017

Accepted: November 1, 2017

Published: November 29, 2017

Copyright: This is an open access article, free of all copyright, and may be freely reproduced, distributed, transmitted, modified, built upon, or otherwise used by anyone for any lawful purpose. The work is made available under the [Creative Commons CC0](https://creativecommons.org/licenses/by/4.0/) public domain dedication.

Data Availability Statement: Primary locational data for the archaeological sites used in this study is available from the site file managers of the states examined herein. These include: Georgia SHPO; Virginia Department of Historic Resources (VA-DHR); Florida Department of State, Division of Historical Resources (FDOS-DHR); South Carolina Institute of Archaeology and Anthropology (SCIAA); University of Alabama's Office of Archaeological Research (OAR); Louisiana Office of Cultural Development, Division of Archaeology;

Abstract

The impact of changing climate on terrestrial and underwater archaeological sites, historic buildings, and cultural landscapes can be examined through quantitatively-based analyses encompassing large data samples and broad geographic and temporal scales. The Digital Index of North American Archaeology (DINAA) is a multi-institutional collaboration that allows researchers online access to linked heritage data from multiple sources and data sets. The effects of sea-level rise and concomitant human population relocation is examined using a sample from nine states encompassing much of the Gulf and Atlantic coasts of the southeastern United States. A 1 m rise in sea-level will result in the loss of over >13,000 recorded historic and prehistoric archaeological sites, as well as over 1000 locations currently eligible for inclusion on the National Register of Historic Places (NRHP), encompassing archaeological sites, standing structures, and other cultural properties. These numbers increase substantially with each additional 1 m rise in sea level, with >32,000 archaeological sites and >2400 NRHP properties lost should a 5 m rise occur. Many more unrecorded archaeological and historic sites will also be lost as large areas of the landscape are flooded. The displacement of millions of people due to rising seas will cause additional impacts where these populations resettle. Sea level rise will thus result in the loss of much of the record of human habitation of the coastal margin in the Southeast within the next one to two centuries, and the numbers indicate the magnitude of the impact on the archaeological record globally. Construction of large linked data sets is essential to developing procedures for sampling, triage, and mitigation of these impacts.

Maryland Historical Trust; and the North Carolina Office of State Archaeology (OSA). The Coastal State Site Data for Sea-Level Rise Modeling. 2017 From Georgia Archaeological Site File (GASF), Virginia Site Files, Florida Site Files, South Carolina SHPO, Alabama Site Files, Louisiana Site Files, Maryland Site Files, North Carolina Site Files. Edited or directed by: David G. Anderson, Joshua Wells, Stephen Yerka, Sarah Whitcher Kansa, Eric C. Kansa. Released: 2017-03-01. Open Context. Available from: <http://opencontext.org/tables/0c14c4ad-fce9-4291-a605-8c065d347c5d> DOI: <http://dx.doi.org/10.6078/M7ST7MRR>.

Funding: The development of DINAA is funded by the National Science Foundation (Awards Numbers NSF 1217240, 1623621, 1216810, 1623644), and the Institute of Museum and Library Services (Award #LG-70-16-0056-16). The funders had no role in study design, data collection and analysis, decision to publish, or preparation of the manuscript.

Competing interests: The authors have declared that no competing interests exist.

Introduction

In recent years, concerns about the damaging effects of anthropogenic global climate change have been amplified by the increasing frequency of destructive weather events, large-scale wildfires and droughts, and a growing body of evidence indicating sea levels will rise appreciably over the next several centuries, from 1 m in the next century to 5 m or more in the centuries thereafter ([1–4]). The effects of such increases in sea level will be severe and long-lasting. At present, over 40% of all people worldwide live within a 100 km distance from the nearest coastline, many in low lying areas vulnerable to sea level rise [5–11]. Should projected rises occur, the effect on humans living on and near the coast, including the loss of infrastructure is nearly incalculable, and will require population movement and resettlement on scales unprecedented in human history. Here we demonstrate, using examples from the southeastern United States, that not only modern populations and properties, but also irreplaceable heritage in the form of the physical record of past human settlements, are currently vulnerable to projected sea level rise as a destructive agent. We argue that archaeologists and society at large should direct increased attention to planning for and mitigating these losses to heritage resources.

The worldwide historic preservation community has begun to express serious concerns over the threat of global climate change to the archaeological and historic record, especially with respect to the potential loss of data that will occur as coastal zones are subjected to increased erosional forces and inundation from rising sea levels [12–35]). Analyses have been directed to determining how rising or fluctuating sea levels damage archaeological and historical resources, sacred and traditional sites, as well as submerged resources like former terrestrial archaeological sites, buildings, and shipwrecks [36–45]. Threats to coastal and near-coastal cultural resources will also come from activities undertaken to resist rising waters. Sea walls and other barriers may provide protection to critical coastlines at favorable cost benefit tradeoffs [46], but their construction will potentially impact large numbers of existing and undocumented cultural resources, far exceeding work conducted as a result of recent oil spills like the Exxon Valdez in Alaska and Deepwater Horizon along the southeastern Gulf coast [47–50]. Far less consideration has been given to the damage or loss of cultural resources that will occur as populations residing in coastal areas are displaced inland, building new communities or expanding existing ones. In previously less-developed regions, where little prior archaeological work has occurred, innumerable unrecorded archaeological and historical sites will also be threatened. The salvaging of valuable materials from threatened infrastructure itself will likely take a toll on historic properties, although some of the more iconic buildings may themselves be relocated to higher ground. For example, the White House or the Lincoln Memorial may be moved from Washington, D.C., much like the Egyptian New Kingdom era temple of Abu Simbel was moved before the rising waters of the Aswan High Dam submerged the area in the 1960s, and the Cape Hatteras lighthouse was relocated 2,900 feet to protect it from encroaching seas in 1999 [32, 51, 52].

Damage from shoreline erosion represents a significant concern to preservationists, with appreciable research globally now being directed to well-known archaeological and historical resources threatened by such processes [19, 24, 25, 27–45]. Important research is addressing the threat of global climate change, particularly sea level rise, to national landmarks or national parks in the United States [19, 21, 28, 29, 32, 53, 54]. However, more inclusive and geographically broad-based analyses are rare, because comprehensive data sets encompassing all known archaeological and historical resources at regional or continental scales have not previously been available. In the United States, cultural resource data are managed at the state rather than the national level, or within specific federal agencies, making such database development and large-scale analyses challenging. Integrating these data together is crucial to determining how

climate change, including fluctuations in sea-level, will impact heritage resources at regional and continental scales. Calls for such syntheses have recently appeared [55, 56], and fostering research on this scale is widely heralded as a grand challenge facing the archaeological profession in the United States [57, 58], essential to exploring questions about changes over time in organizational complexity, human responses to climate change, and long-term settlement dynamics [31, 59–70].

Linked database development: The DINAA project

The Digital Index of North American Archaeology [71–73], or DINAA, permits the examination of relationships between environmental and cultural resources over large areas, by rendering diverse heritage data sets interoperable, and linking them with natural systems data sets encompassing physiography, biota, and climate in the past, present, and projected into the future. A multi-institutional collaboration, DINAA consists of an online, integrated open-source database of archaeological and other kinds of evidence for North America’s human settlement. Since 2012, DINAA has compiled and rendered interoperable archaeological site file data from 15 states in Eastern North America (N = 505,056 sites). This work has been done in consultation and cooperation with government, academic, and tribal stakeholders, and with funding from the National Science Foundation, the Institute of Museum and Library Services, and support from the leadership of archaeological professional organizations, including the Society for American Archaeology, the Society for Historical Archaeology, and the Archaeology Division of the American Anthropological Association [73] (Fig 1). As of October 2017,

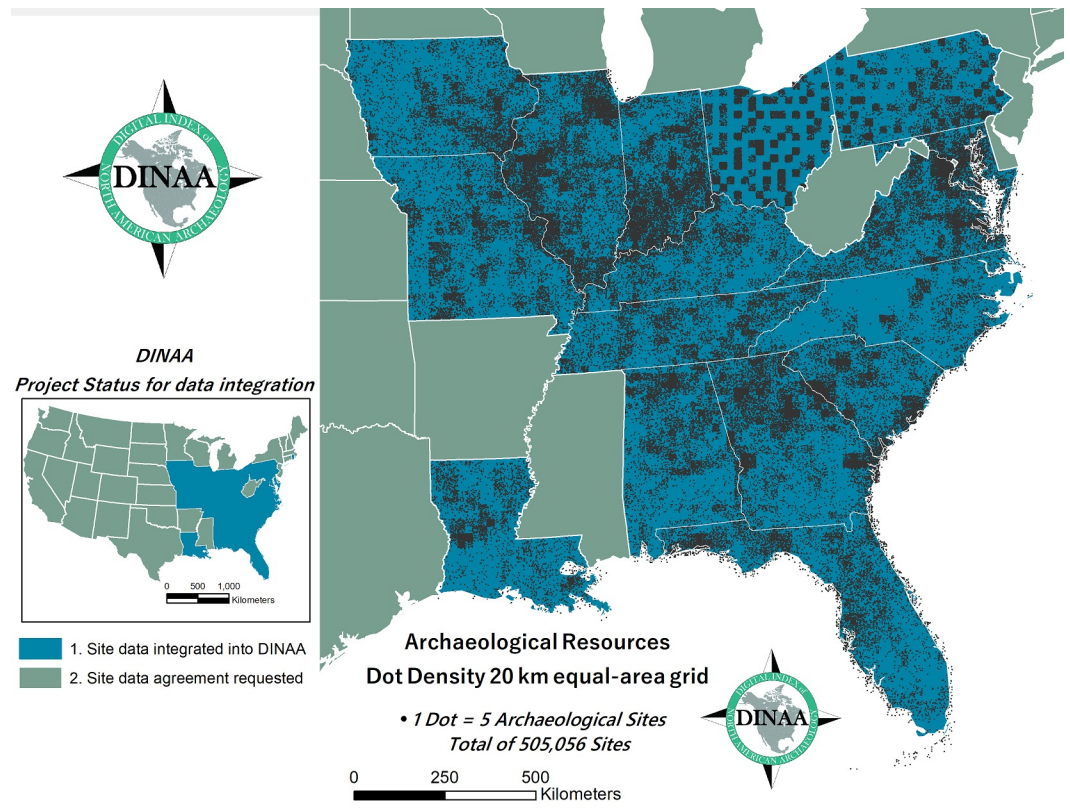


Fig 1. DINAA partnerships as of July 2017 with dot density plot showing distribution of cultural resources at low resolution within states whose data have been received thus far. Data: [73]. Ohio and most Pennsylvania site data is at county-level resolution.

<https://doi.org/10.1371/journal.pone.0188142.g001>

personnel from 21 states are actively participating in DINAA development, and the project has initiated discussions with site file managers and governing authorities in the remaining 28 states in continental North America, and in other countries, with the goal of developing a truly continental database. Information rendered accessible through DINAA is seeing increasing attention and use by researchers and resource managers, enhancing public awareness, education, and appreciation for scientific research in general and archaeology in particular [74–86].

DINAA is a publicly accessible compilation of existing archaeological site file, collection, and report data from multiple regional, state, and local repositories, linked with other archaeological databases as well as modern and paleoenvironmental data sets, with site numbers serving as the basic identifier and standardized temporal metadata as a relational control between data sets, to permit analyses by selected time periods. Archaeological site files contain data and metadata about the chronology, location, and function of sites, in combination with other information that can include diagnostic artifact descriptions, radiocarbon and other absolute dating determinations, and bibliographic citations. While each state and agency uses somewhat different systems, they are rendered interoperable through DINAA.

Through deployment on Open Context [73], an open data publishing service for archaeology, DINAA embraces current best practices in scientific data-management including open standards and open licensing, transparent version control of both data and source code, Linked Data, and iterative development. Through aggregation and human editorial processes to align data set schemas and controlled vocabularies, DINAA provides some of the benefits of centralization without requiring different (and typically financially constrained) state agencies to change their own systems. Thus, DINAA fosters independent development and experimentation through integration of distributed systems managed by a host of institutions. This approach enables community-wide participation and investment in archaeological informatics, making the resulting cyberinfrastructure products shared and useful for all.

DINAA also strictly conforms to legal requirements regarding the maintenance and use of cultural resources data. While analyses like those reported herein can occur making use of records with specific geospatial data, the data itself and permission to use it must be obtained from the agencies maintaining the information. DINAA, accordingly, does not publish or store precise site coordinates online, and the project redacts other sensitive attributes, particularly property ownership, from state site file repositories, in consultation with agency and other interested parties, including tribal nations. Directions to offices to contact to obtain such information for each site are provided with analytical output, but DINAA itself does not maintain or release such data. For public display purposes DINAA site data is aggregated within a tiled web map in Open Context, where a map-tiling algorithm allocates each site record to a 0.176 degree grid cell in the WGS Web Mercator projection (roughly 20x20 km at the equator). The Open Context platform provides publicly accessible online map interfaces for visualization and queries at a low level of spatial resolution that still has great utility when examining distributions encompassing large areas or time periods. DINAA digital data are archived with the California Digital Library, and mirrored in repositories in other countries to ensure long term survival [71, 72].

Indexing, or linking to and rendering interoperable data from many sources and across disciplines is a major function of DINAA, increasing its utility for resource management, research, and public education (Fig 2). By cross-referencing distributed collections on the Web, DINAA enables users to find and access relevant content in archaeological systems like Archaeology Southwest [87], the Paleoindian Database of the Americas [88, 89], the Eastern Woodlands Household Archaeology Database Project [90], the Canadian Archaeological Radiocarbon Database [91], the Digital Archaeological Archive of Comparative Slavery [92], the Chaco Research Archive [93], PeriodO [94], and The Digital Archaeological Record [95].

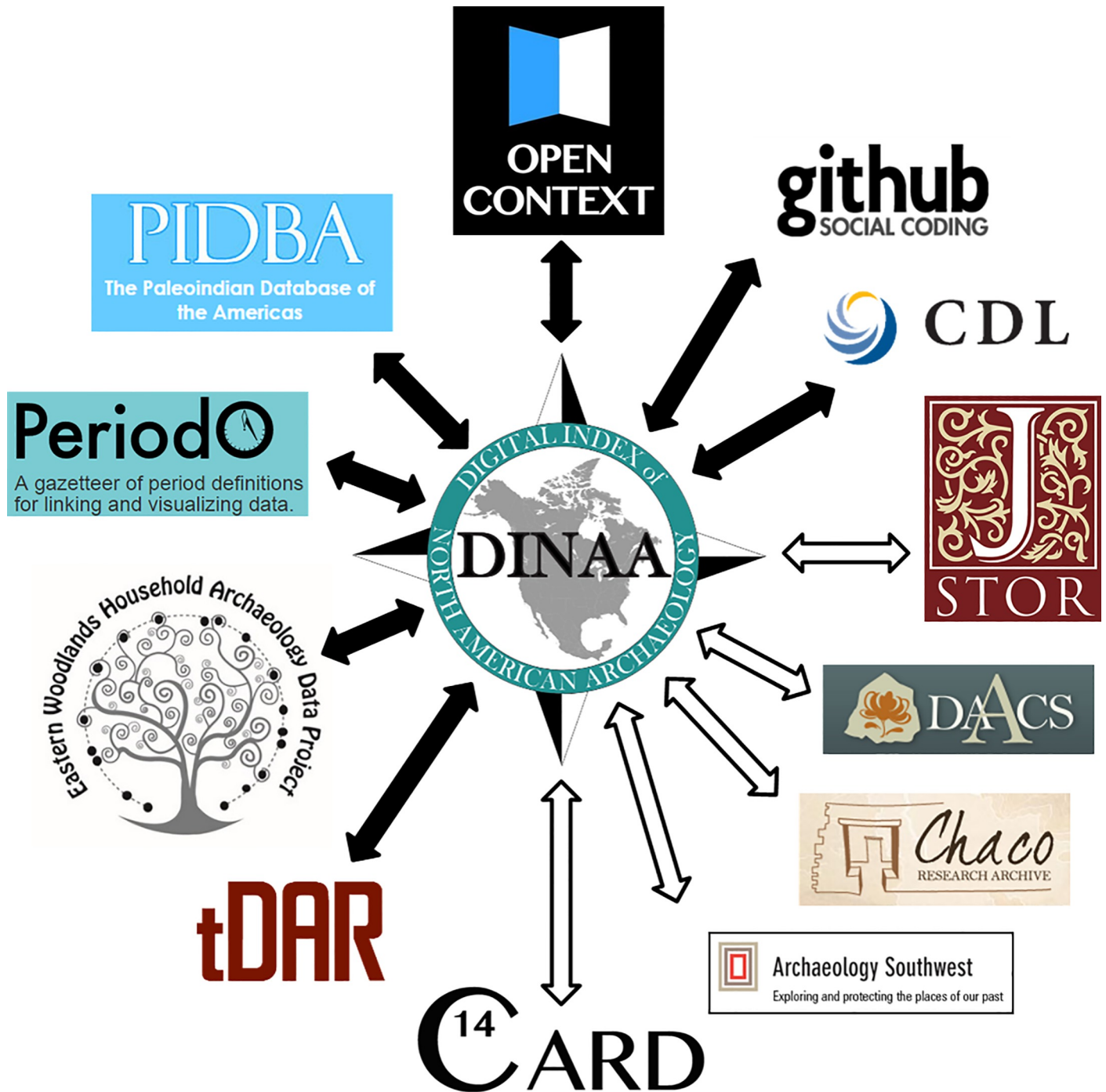


Fig 2. DINAA links information in a wide range of online data repositories, using archaeological site numbers as the common referent. DINAA directs users to these outlets, but access and content control remains on their systems (black arrows indicate existing linkages, white arrows indicate linkages under development).

<https://doi.org/10.1371/journal.pone.0188142.g002>

Aggregators such as Pelagios [96], a collaborator with DINAA, can then “harvest” cross-references between different systems to present users with services, maps, and visualization tools to discover related data and other media that relate to DINAA curated site files. DINAA can serve as a key node in connecting North American archaeological data, allowing, for the first

time, its linkage across multiple time periods and geographic regions, and using an array of environmental data sets to explore fundamental issues such as changes in human land use over time; the nature of the archaeological record collected over the past century, including the identification of research strengths and gaps; and, as we show here, how future changes in climate will affect site preservation and heritage management.

Impacts of sea-level rise in the southeastern United States

The focus for this study is the southeastern United States, where a vast shoreline characterized by minimal vertical relief exists, and where minor fluctuations in sea level have been shown to have significant effects on shoreline movement and human settlement in the past (e.g., [41, 60–62, 66–70, 97–99]). The southeastern United States is also where DINAA data are most complete. This study draws on archaeological site records from eight states, encompassing most of the recorded archaeological sites on the Atlantic and Gulf coasts of the southeastern United States (n = 129,795 sites; Fig 3). The analysis spans the area from Maryland to the Texas-Louisiana border, and makes use of all recorded sites within these states as of January 2016, including historic properties determined eligible for the National Register of Historic Places (NRHP)[100]. These data were used to develop a GIS-based inventory and assessment of threats to known archaeological and cultural resources located along the Atlantic and Gulf coasts of the eastern United States. Only archaeological site data from Mississippi is not included, due to delays in data transfer. Fortunately Mississippi occupies only a small area along the Gulf coast, and data were available from it for the other analyses conducted.

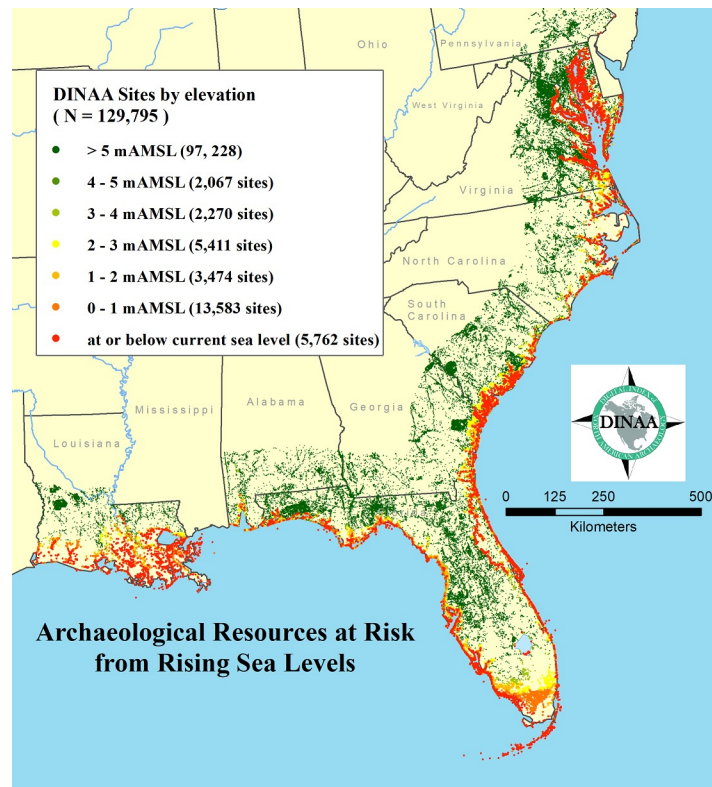


Fig 3. Site incidence as it relates to potential loss from sea-level rise, grouped by elevation in meters above present mean sea level. Data: [72, 73, 151]. All recorded sites within a buffer of 200 km from the present coastline are shown.

<https://doi.org/10.1371/journal.pone.0188142.g003>

Three areas of concern raised by projected sea level rise are examined: (1) the numbers of archaeological and eligible historic properties affected, (2) the numbers of people displaced, and (3) the kinds of mitigation strategies necessary based in part on the numbers of sites that will be lost by period. No calendar dates are presented beyond general estimates for when sea levels will reach specific elevations. Such determinations are projections at present, with wide ranges depending on circumstances [1, 3, 4].

Cultural resource loss due to sea-level rise

Archaeological sites and NRHP Eligible properties in the study area are listed by elevation in Tables 1 and 2, data that serves as a proxy for the numbers that will be lost given sea level rise of varying values. Data are provided in summary form by state and 1-meter increments from 0 to 5 meters, and greater increments beyond that, encompassing all sites and NRHP properties within 200 km of the current coastline. The 200 km buffer was used to assess the numbers of recorded properties at various elevations further inland, where populations may be forced to relocate. More specific analyses can be calculated as needed, for example, around inland areas where population relocation may occur, or along portions of the coast where construction of seawalls might be considered.

It is clear that small increases in sea level will have great consequences on the coastal archaeological record. A total of 32,898 recorded archaeological sites along the southeastern Atlantic and Gulf coastal margin are within 5 m of modern sea level, including 5,762 recorded at or below sea level and 331 for which no elevation data were available in the state site files or that could be determined given the locational data present (Table 1). Assuming current projections hold, and the sea level rises approximately one meter by the end of the century [1, 2], a total of 19,676 currently recorded archaeological sites will be submerged. Since survey coverage is incomplete, the numbers of actual sites impacted will be much higher. Large numbers of recorded sites are within 1m vertical elevation of modern sea level, and the numbers drop off markedly above 3 m across the region. People in the Southeast appear to have lived in close proximity to the coast in recent millennia, at least in terms of elevation [97–99]. Similar losses are indicated when NRHP eligible property data are examined, with 1,318 at or below 1 m in elevation, and 2,472 within 5 m of modern sea level (Table 2). While some archaeological sites are included in the NRHP data, many historic buildings and landscapes are also present. In

Table 1. Archaeological site loss in the southeastern United States due to sea level rise within 200 km of the coast. Data: [72, 73, 151].

mAMSL	LA	MS	AL	FL	GA	SC	NC	VA	MD	Total
Below 0	324	n/a	37	1,539	266	547	212	1,077	1,760	5,762
0 to 1 m	2,376	n/a	98	3,959	678	1,551	687	2,220	2,014	13,583
>1 to 2 m	241	n/a	22	1,322	397	619	270	354	249	3,474
>2 to 3 m	356	n/a	125	1,275	1,175	1,350	305	632	193	5,411
>3 to 4 m	261	n/a	24	874	106	425	179	262	139	2,270
>4 to 5 m	150	n/a	13	606	139	471	204	330	154	2,067
>5 to 10 m	778	n/a	275	3,360	1,343	3,090	1,128	1,258	707	11,939
>10 to 15 m	456	n/a	192	3,457	414	909	879	2,792	1,389	10,488
>15 to 20 m	218	n/a	154	2,107	875	537	283	646	330	5,150
>20 to 25 m	181	n/a	161	3,090	1,350	656	240	521	165	6,364
>25 to 30 m	260	n/a	158	3,158	641	646	470	3,822	590	9,745
>30 to 50 m	723	n/a	528	5,523	2,427	1,678	984	1,806	997	14,666
>50 m	4,481	n/a	2,177	2,031	4,381	3,681	1,726	16,461	3,938	38,876
Total	10,805	n/a	3,964	32,301	14,192	16,160	7,567	32,181	12,625	129,795

<https://doi.org/10.1371/journal.pone.0188142.t001>

Table 2. National Register of Historic Places eligible property loss in the southeastern United States due to sea level rise within 200 km of the coast. Data: [100].

mAMSL	LA	MS	AL	FL	GA	SC	NC	VA	MD	Total
Below 0	11	2	8	136	12	33	19	27	35	283
0 to 1 m	196	34	2	302	18	100	119	124	140	1,035
>1 to 2 m	39	10	2	210	7	42	26	27	30	393
>2 to 3 m	63	17	58	132	22	54	30	47	17	440
>3 to 4 m	83	2	2	56	4	7	10	7	16	187
>4 to 5m	47	0	4	33	4	8	8	14	16	134
>5 to 10 m	166	34	34	153	27	62	72	58	65	671
>10 to 15 m	90	0	5	42	25	9	80	116	125	492
>15 to 20 m	76	1	5	32	5	15	41	29	51	255
>20 to 25 m	45	0	4	45	5	32	35	41	20	227
>25 to 30 m	19	2	6	67	11	29	100	234	69	537
>30 to 50 m	39	48	36	210	69	99	132	99	123	855
>50 m	78	209	117	87	250	346	422	1,059	560	3,128
TOTAL	952	359	283	1,505	459	836	1,094	1,882	1,267	8,637

<https://doi.org/10.1371/journal.pone.0188142.t002>

addition, traditional cultural properties (TCPs) and resource areas important to Native American groups are often identified through characteristics not recognized by the NRHP, and may not be included in counts of cultural resources in coastal areas. Likewise, not all coastal and offshore areas have been thoroughly surveyed for submerged or partially submerged sites, which will likely be impacted by changes in biotic activity, commercial fishing, boat traffic, and overall access given changes in sea level [36–40]. Again, a substantial drop off in NRHP property numbers is evident immediately away from the coast, and especially above 3 m in elevation, another indicator of the importance of immediate coastal margins in human history [22, 101–103].

The data are sobering: projected sea level rise in the current century, as well as in subsequent centuries, will result in the loss of a substantial portion of the record of both pre-Columbian and historic period human habitation of the coastal margin of the southeastern United States. Tens of thousands of historic and prehistoric archaeological sites, and thousands of properties currently designated eligible for inclusion on the NRHP, which include archaeological sites, standing structures, and other cultural property types, will be submerged and hence lost or damaged, as well as underwater resources that will be effected by changes in ocean acidification, currents, and shipping patterns [22, 23, 103–105]. The impact of changing climate on terrestrial and underwater archaeological sites, historic buildings, and cultural landscapes will be massive. Furthermore, not only are these coastal and near-coastal resources threatened by inundation and erosion, but they will also be threatened by efforts to prevent or delay the loss of coastal land through massive infrastructure projects like sea walls, assuming seas rise slowly enough to permit their construction, or they lie in areas not afforded protection by sea walls. While such activities may slow or even halt the inland advance of coastal waters in some areas [46], they would also likely cause significant damage and destruction to existing heritage resources. Because survey coverage oriented toward finding archaeological sites and historic properties is incomplete in many coastal areas, as are efforts to evaluate these sites in terms of NRHP eligibility, these estimates should be viewed as conservative. Below we assess other impacts of sea level rise likely to impact cultural resources, and discuss the implications of these data in planning for the future.

Population displacement and land area loss due to sea-level rise

Sea level rise will displace large numbers of people and inundate large areas on the eastern and Gulf coasts of the United States, even should major construction projects occur to protect critical population and economic centers (Fig 4). Data on the numbers of people and amount of

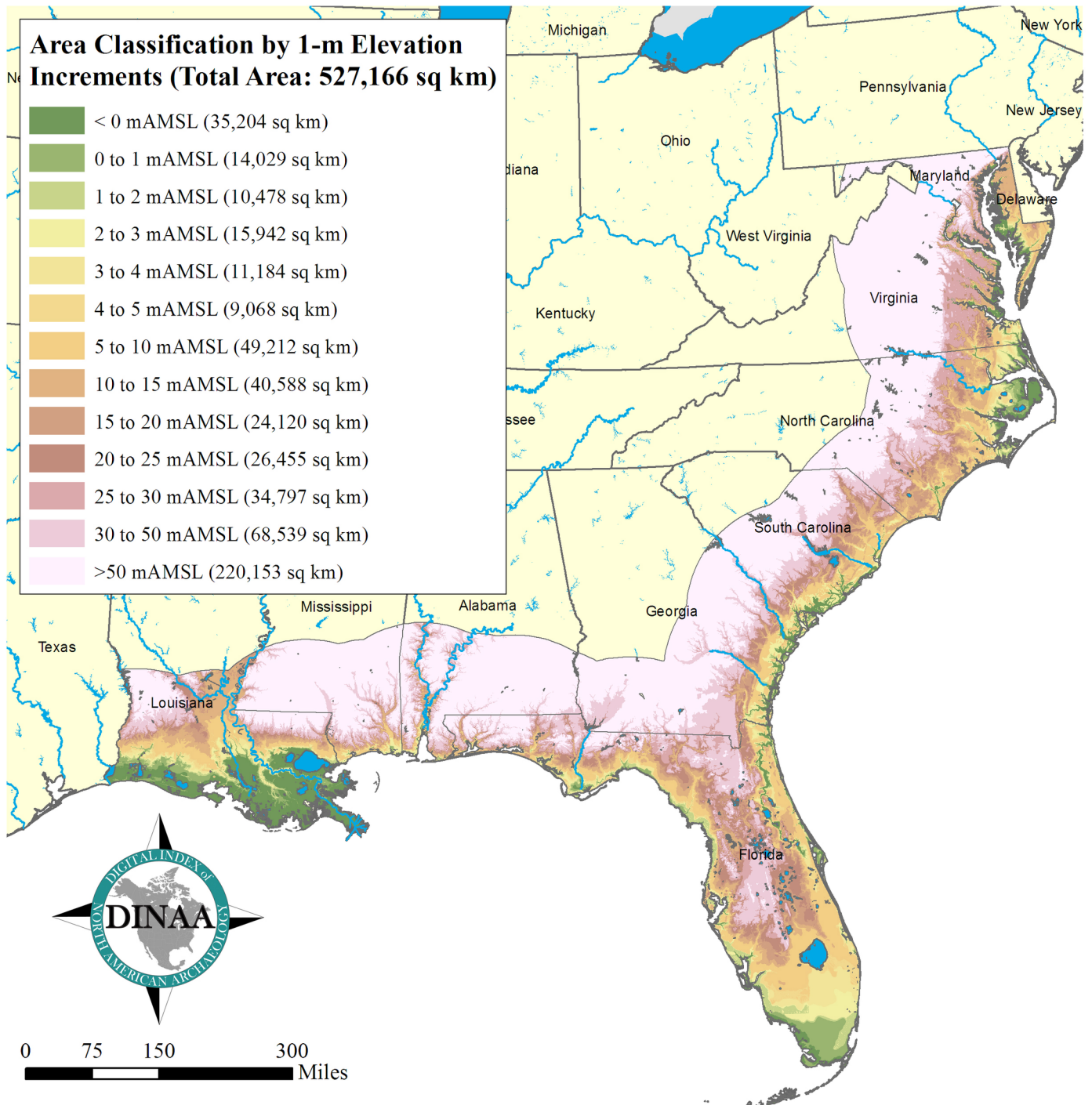


Fig 4. Land area in the southeastern United States within 50 m AMSL. Data: [108].

<https://doi.org/10.1371/journal.pone.0188142.g004>

Table 3. Population displacement in the southeastern United States due to sea level rise. Data: [106, 107].

mAMSL	LA	MS	AL	FL	GA	SC	NC	VA	MD	Total
Below 0	795,402	10,776	2,363	631,395	18,048	65,574	78,958	377,711	236,880	2,217,107
0 to 1 m	273,596	3,381	5,158	634,594	14,434	54,754	49,196	38,663	28,343	1,102,119
>1 to 2 m	156,277	2,209	6,827	3,103,454	15,401	68,631	70,352	110,851	34,889	3,568,891
>2 to 3 m	236,037	93,461	54,897	2,590,623	138,439	190,086	75,459	501,915	25,428	3,906,345
>3 to 4 m	290,289	2,804	4,799	860,511	18,469	52,678	43,948	118,819	14,056	1,406,373
>4 to 5m	122,284	4,816	3,148	988,216	39,366	51,792	55,956	102,134	36,307	1,404,019
>5 to 10 m	741,792	159,564	87,382	3,258,818	207,995	470,917	495,872	269,773	201,051	5,893,164
>10 to 15 m	388,072	49,132	57,471	1,119,765	41,183	157,804	229,663	272,363	415,774	2,731,227
>15 to 20 m	224,409	30,278	29,526	805,974	32,840	72,801	160,878	59,859	149,118	1,565,683
>20 to 25 m	147,190	9,733	25,433	1,422,249	69,025	123,574	71,594	55,640	81,983	2,006,421
>25 to 30 m	57,318	24,005	39,616	1,159,401	49,996	97,076	149,938	477,979	434,498	2,489,827
>30 to 50 m	124,471	107,455	194,767	1,837,261	219,256	302,645	553,648	314,064	688,838	4,342,405
>50 m	140,078	645,887	673,750	406,486	1,299,360	1,270,284	2,576,182	3,982,484	3,453,346	14,447,857
Total	3,697,215	1,143,501	1,185,137	18,818,747	2,163,812	2,978,616	4,611,644	6,682,255	5,800,511	47,081,438

<https://doi.org/10.1371/journal.pone.0188142.t003>

area involved are provided in Tables 3 and 4, encompassing the nine states in the study sample. No areas or population centers are excluded, even those where massive efforts are likely to be made to protect them, to provide an accurate determination of the extent of the environmental impact. Population data are derived from 2013 estimates produced as part of the ongoing LandScan initiative undertaken by the Oak Ridge National Laboratory [106, 107]. The 2013 LandScan data set, which is available as a downloadable raster data set, has a horizontal resolution of 1 km² per pixel. The raster was converted to a point feature, with each pixel from the original raster (and the associated population value per pixel / square kilometer) represented by a single point feature. By spatially joining these points to polygon features representing land areas grouped by elevation into 1-meter increments from 0 to 5 m AMSL (above mean sea level)—derived from 1-arc second (30 m²) resolution digital elevation models provided by the United States Geological Survey’s National Elevation Data set [108]—it is possible to make

Table 4. Land area loss in the southeastern United States due to sea level rise, in sq km. Data: [108].

mAMSL	LA	MS	AL	FL	GA	SC	NC	VA	MD	Total
Below 0	18,909	91	73	4,892	1,279	2,194	3,491	1,932	2,342	35,204
0 to 1 m	4,334	46	88	6,662	305	312	1,722	268	292	14,029
>1 to 2 m	1,619	42	57	5,740	488	360	1,388	400	384	10,478
>2 to 3 m	2,399	698	273	6,214	1,326	1,949	2,070	721	291	15,942
>3 to 4 m	2,234	45	42	6,793	239	312	985	292	243	11,184
>4 to 5m	1,339	41	71	4,580	384	627	1,342	356	327	9,068
>5 to 10 m	7,180	1,128	938	22,481	2,529	5,312	6,272	1,666	1,704	49,212
>10 to 15 m	7,674	1,279	1,002	11,903	1,366	3,368	8,082	2,879	3,035	40,588
>15 to 20 m	3,311	847	995	9,870	1,617	2,388	3,552	1,042	498	24,120
>20 to 25 m	2,251	542	958	13,297	1,970	3,802	2,382	1,039	214	26,455
>25 to 30 m	2,510	1,273	1,404	11,484	2,188	3,596	4,803	6,324	1,213	34,797
>30 to 50 m	5,191	4,688	6,732	19,983	13,795	7,371	7,740	1,703	1,335	68,539
>50 m	8,941	32,093	35,259	7,325	42,113	19,047	21,539	43,933	9,905	220,153
Total	67,892	42,814	47,892	131,223	69,601	50,637	65,368	62,557	21,784	559,769

<https://doi.org/10.1371/journal.pone.0188142.t004>

quantitative predictions about the potential effects of sea level rise on coastal populations. It should be noted that studies excluding tidelands produce different and typically much lower numbers for land area loss [109, 110].

Over 3 million people in the Southeast currently live in areas at or below 1 mAMSL, and hence are likely to be displaced in the next century given current projections for sea level rise (Table 3). It should be noted that the population data includes significant numbers of people in cells with an average elevation below 1 mAMSL, reflecting the nature of the sample cells, and the fact that some people do live in areas below modern sea level, in areas protected by levees such as in the lower Mississippi Delta. Even larger numbers of people live in immediately higher elevations, in the intervals from 1–2 m and 2–3 m, a pattern that differs somewhat from the archaeological and historic record, where the largest numbers of sites were found in the interval at or below 1 m in elevation. Modern populations whose occupations are not considered historic or archaeological appear to have been, on the average, occupying higher ground at greater distance from the coast. This most likely reflects infrastructure related to transportation and acquisition of potable water, although above 3 m the numbers of people, like the numbers of recorded historic and archaeological sites, also drop substantially, again reflecting a strong preference for proximity to the coast. This loss of ancient heritage will strikingly compound the injuries of climate change to indigenous peoples forced to vacate ancestral homes in coastal regions, something already happening to Native populations in the southeastern United States [111].

Appreciable terrain will also be submerged in the southeastern United States as sea levels rise, with losses in some states greater than others, with the greatest loss in Florida, which also has the longest coastal margin (Table 4). These values, of course, only tell part of the story, since the numbers of people living within these areas will be making their own decisions about how to react, individually and collectively. However slowly or rapidly sea level rise occurs, in extreme weather events storm surges and flooding will affect infrastructure, and may prompt population movement even before an area is completely submerged, with substantial impacts on cultural resources [12–17, 112–115]. As coastal terrain is flooded, increased development is likely in the regions behind the coastline, so the area of effect will extend away from the coast. What specific areas and elevations will undergo development, that is, will be occupied by displaced people and their infrastructure, will be shaped, in part, by the rate and extent of sea level rise. How this will affect local and global economies and cultures has been the subject of much recent attention, such as that given by individual southeastern states like Florida where much of the southern part of the state is at risk [116]; federal agencies like the National Park Service, which recently projected infrastructure losses for 40 coastal parks (out of a total of 117 parks in or near the coastal zone) at \$40 billion [21]; and countries in the developing world, which are facing losses of potentially trillions of dollars in gross domestic product [5, 117]. Coastal zones, including large areas in the United States, many cities, and entire island nations are in immediate danger of inundation in the next century [109, 117–119]. The effects of shoreline erosion and local increases in sea level relative to land are particularly pronounced in places like coastal Louisiana [120, 121].

Sea level rise and changes in shoreline environments will not be uniformly distributed, due to variability in shoreface, beach, and substrate composition, sediment sources and sinks, freshwater sources, tidal action, and biotic communities [122–123]. Coastal landforms such as sea-islands, long a favored area for human occupation in the lower Southeast, may be especially vulnerable to both sea level rise and increased storm frequency and intensity lowering their overall height [124]. Sea level rise will also dramatically impact areas well inland, not only because that is where people will be forced to relocate, or obtain materials for dykes and similar barriers [46], but because terrestrial and marine environments, and hence human food and

fresh water sources, will themselves be impacted by changes in tidal range and salinity [125–127]. The dead as well as the living will also be impacted, as sea level rise covers burial areas, a fact that appears to have shaped human worldviews in the ancient American Southeast and continues to be a subject of concern in the present [43, 67, 69]. While historic era cemeteries are not typically recorded as archaeological sites in many states unless subject to excavation, 6,897 are documented in DINAA from the 15 state regional sample, albeit very unevenly distributed due to reporting differences [73]. This is apparently a tiny subset of the estimated ca. 100,000 cemeteries present from the historic period alone in the United States [128]. Sea level rise will thus impact many burial areas ancient and modern, adding another consideration in mitigation planning [43, 45, 67, 69].

Strategies for mitigating losses due to sea-level rise

At present, the effects of sea level rise on past cultural resources can be directly observed in the sparsity of the coastal archaeological record for the late Pleistocene and early Holocene period, during which time humans living in the Americas occupied vast areas of the continental shelf that were exposed by sea levels as much as 120 m lower than today [37–39, 61, 62]. Following a period of rapidly rising sea levels in the late Pleistocene and Early Holocene, the coastlines of the eastern United States reached near modern locations about 6000 years ago, but have still experienced fluctuations of 1 to 2 m vertically and up to several kilometers horizontally in recent millennia, with significant impacts on coastal populations [97–99, 101–102]. These regions are now directly threatened by rising waters, and the potential for the loss of thousands of years of accumulated information is significant. Given the large numbers of cultural resources threatened by sea level rise, planning possible protection and mitigation strategies should proceed with an increased sense of urgency. Many researchers and government agencies within the United States and beyond, in fact, have initiated or been developing both broad based and focused, site-specific studies on the effect of sea level rise [21–23, 25–35, 129].

One way to proceed is to use the entire known sample of cultural resources to document the numbers of properties that will be lost, by specific time period and within specific areas. Developing such a comprehensive database, of course, will be necessary, and include site records maintained by disparate state, federal, tribal, and local government agencies. This information can help to develop a triage system for cultural resources in coastal and near-coastal regions [130]. At the same time, efforts should be directed toward identifying and evaluating areas and site types currently under- or unexamined. The goal of such efforts should be to assist in the development of programs directed to the excavation, removal or relocation, and architectural documentation of critical cultural resources and resource areas. In the Southeast such efforts are appearing at the state level, including studies of significant sites or areas in Georgia [25, 131] and Florida ([41, 66–70, 132], and collectively over large areas by federal agencies like the National Park Service [21, 28, 32]. DINAA offers a means to augment these studies by updating inventories with robust data linked to many other data sets and analytical platforms, facilitating effective resource management planning.

Data on the number of components by major temporal period located at archaeological sites within 200 km of the coast, by elevation above modern sea level, are given for the state of South Carolina in Table 5. The numbers of sites in each elevation interval correspond to the state totals, since they are derived from the same site file data set in DINAA (Table 1), but the numbers of components are invariably higher, in some cases much higher, because some sites were repeatedly visited and are multicomponent. In some cases individual occupations can be quite specifically identified to temporal period while others can be only generally identified to age, perhaps no more specifically than to a categorization as precontact or historic. It should

Table 5. Archaeological site and component loss in South Carolina due to sea level rise within 200 km of the coast. Data: [73]. PI = Paleoindian. EA = Early Archaic, MA = Middle Archaic, LA = Late Archaic, AA = Any Archaic, EW = Early Woodland, MW = Middle Woodland, LW = Late Woodland, AW = Any Woodland, M = Mississippian, LP = Late Prehistoric, UP = Unknown Prehistoric, CEP = Contact Era/Protohistoric, 16th = 16th Century Historic, 17th = 17th Century Historic, 18th = 18th Century Historic, 19th = 19th Century Historic, 20th = 20th Century Historic, UH = Unidentified Historic.

mAMSL	PI	EA	MA	LA	AA	EW	MW	LW	AW	M	
Below 0	4	14	8	45	0	56	77	50	0	26	
0 to 1 m	3	11	9	122	0	221	329	209	1	126	
>1 to 2 m	0	4	3	57	0	108	170	97	0	53	
>2 to 3 m	2	8	5	130	0	205	296	165	5	94	
>3 to 4 m	2	3	2	54	0	75	133	53	1	35	
>4 to 5 m	0	7	6	63	0	98	150	70	3	36	
>5 to 10 m	3	42	60	365	6	601	975	508	13	279	
>10 to 15 m	4	32	32	155	6	171	271	129	17	66	
>15 to 20 m	5	31	35	76	3	87	126	67	6	26	
>20 to 25 m	10	40	56	78	3	100	117	51	4	32	
>25 to 30 m	10	50	50	73	0	86	117	63	0	18	
>30 to 50 m	28	136	141	193	3	180	197	140	3	67	
>50 m	24	202	276	337	0	411	523	206	0	123	
Sample Total	95	580	683	1,748	21	2,399	3,481	1,808	53	981	

										Component	Site
mAMSL	LP	UP	CEP	16th	17th	18th	19th	20th	UH	Totals	Totals
Below 0	0	130	0	2	8	98	219	108	108	953	547
0 to 1 m	0	426	0	6	38	275	574	293	179	2,822	1,551
>1 to 2 m	0	166	0	0	15	130	252	128	93	1,276	619
>2 to 3 m	0	313	0	3	24	235	526	280	158	2,449	1,350
>3 to 4 m	0	86	0	0	7	77	153	76	42	799	425
>4 to 5 m	0	117	0	2	10	74	154	85	54	929	471
>5 to 10 m	0	658	0	0	34	483	893	658	317	5,895	3,090
>10 to 15 m	0	172	0	1	2	99	200	185	83	1,625	909
>15 to 20 m	0	99	0	0	2	35	148	148	67	961	537
>20 to 25 m	0	205	0	0	2	37	212	220	65	1,232	656
>25 to 30 m	0	170	0	0	0	18	161	215	48	1,079	646
>30 to 50 m	0	491	0	1	1	70	433	489	125	2,698	1,678
>50 m	0	977	0	2	0	84	806	1,008	156	5,135	3,681
Sample Total	0	4,010	0	17	143	1,715	4,731	3,893	1,495	27,853	16,160

<https://doi.org/10.1371/journal.pone.0188142.t005>

be noted that comparable tables can be generated for each state in the region; South Carolina was chosen as an example for illustrative purposes, and to show the potential of DINAA.

Land use patterns are highlighted when examining individual state data by time period, and help to determine if survey coverage or research biases have affected the estimated number of existing sites in coastal areas. Few early prehistoric Paleoindian through Middle Archaic period components, for example, are found in coastal (i.e., low elevation) areas in South Carolina, compared to the much larger number of later precontact and historic components. With greatly lowered sea levels during these earlier periods, the coast would have been much farther away, perhaps making these areas less attractive for settlement. Likewise, given the intense occupation in coastal areas after sea levels largely stabilized in the region during the later Mid-Holocene [133–136], it is not surprising that large numbers of components are found in close proximity to modern sea level. Even in this area, appreciable variability in location exists, due to the effects of ca. 1–2 m fluctuations in sea level in recent millennia ([97–99, 101, 102].

Interestingly, within the South Carolina sample the larger regional pattern holds, in that that large number of components are found within 1 m of modern sea level, and far fewer above 3 m in elevation, reinforcing the conclusion that people over the last several thousand years lived in close proximity to the coast, albeit shifting location as needed to accommodate the fluctuations in sea level of plus or minus 2 m or so that have occurred.

Resource managers will need to evaluate sites in large numbers to determine which ones to preserve, protect, or mitigate. This is no different than what modern cultural resources management deals with on a regular basis, only here we call for consideration of the entirety of the coastal record as one data set, rather than on an individual case-by-case basis. Effective systems of management, including triage and mitigation, can only be developed when we have an accurate understanding of the cultural resources in an area, and where critical gaps in that knowledge exist. Existing databases need to be completed or developed and subsequently linked to systems like DINAA, while strict protections for sensitive location and other information are maintained. Many cultural resource databases reflect incomplete coverage of a geographic area or contain only particular kinds of data. A recent exemplary study of the effects of sea level rise on National Park Service coastal parks, for example, excluded most known archaeological resources because they were not part of the Facilities Management Software System database listing assets requiring routine maintenance within each NSP unit [21]. Improving and linking dispersed databases, and rendering them interoperable for research and management purposes, will allow management decisions to proceed with much larger and more representative samples.

Archaeologists and land managers need to be aware that cultural resources face specific threats, and that sea level rise will impact resources differently in different areas, depending on geomorphological factors like shoreline shape and slope, the underlying matrix, the nature of the archeological deposits, and a range of other variable associated with the cultural properties [22–26, 28–30, 123, 137]. For example, some shell middens dating to the Mid-Holocene have already witnessed episodes of submergence and exposure, but remain at partially intact in coastal marshlands of the Southeast (e.g., [97, 98, 136]), suggesting sea level rise does not necessarily always equate with the total destruction of all types of resources. The circumstances favoring preservation or loss of coastal sites will need to be carefully evaluated on an individual or class basis [22, 130]. Resources directed to cultural resources will undoubtedly change as environmental conditions change, and historic preservation specialists will continue to have a major role in preserving our cultural heritage [26, 114–115, 129, 138]. Guidance for resource managers on how to deal with the impacts of climate change is clearly needed, and action directed to these ends is underway in federal agencies like the US National Park Service [21, 28, 29, 139, 140] as well as international governing bodies like the United Nations [141, 142].

Effort should be directed to making sure our inventories of cultural resources are accurate, adequate, as complete as possible, and linked together with interoperable data elements, so the information can be utilized to prioritize preservation projects and research problems by site type and risk level, allowing the most pressing needs in resource preservation to be addressed effectively. More sites should be evaluated for placement on the NRHP; at present, in some circumstances only formal listing offers any hope of preservation or mitigation. Resources should be directed to evaluating sites in large numbers, as has happened with southeastern coastal shell ring and midden sites [132, 135, 136]. The economic costs of mitigating cultural resource loss through excavation, relocation, or architectural documentation should be considered thoroughly and incurred conscientiously, as it is well known that public funding for historic preservation efforts is often difficult to acquire, limited in quantity, and requires a high level of justification.

Ultimately, what will be needed is a commitment, like that last seen in the Great Depression, to document that which will be lost if the effects of sea level rise are not mitigated. This time, instead of rescuing information from sites in reservoir floodpools as was done by the Tennessee Valley Authority [143], or deliberate economic recovery or tourist-industry focused make-work projects like those in the Macon, Georgia area [144], much of the work will need to occur in coastal areas or where the resettlement of displaced populations will occur. The Cape Hatteras lighthouse relocation was expensive and technically challenging, but offers an excellent example of what can be done when resources are made available [51]). Consideration may have to be given to relocating or constructing protective barriers for other such monuments, like the Castillo de San Marcos and Ft. Matanzas in St. Augustine, for example, or the Lincoln and Jefferson Memorials [21, 28]. The solution to addressing the effect of sea level rise on major centers of heritage, like the nations' capitol, Boston, New York, or Washington, to list just a few of the threatened cities that will receive consideration ([119]), would probably be the construction of sea walls and similar projects, whose cost is projected to be far less than the damage caused by flooding [46]. While these kinds of projects would cause massive damage to cultural resources in the construction zone, including where fill/retaining wall materials came from, their loss could be better accepted given an effective assessment of the totality of the resources affected by sea level rise. Sites in heavily developed, low lying areas may in fact be at less risk, because there will be added effort taken to protect those areas. An NRHP eligible site or structure in central New Orleans is probably more likely to be protected by new sea walls or levees than a shell ring on a low, relatively undeveloped southeastern coastline.

This analysis assumes sea level rise will destroy cultural resources. Of course, depending on the rate and rapidity of rise, it may only submerge these resources, with the extent of damage or loss uncertain. Some studies have shown that sea level fluctuations may not totally destroy cultural resources; much depends on the rapidity and frequency with which submergence or exposure may occur (e.g., [37, 38, 127, 136]). More such studies are critically needed, since preservation in place may be our only option for most sites, unfortunately by default. What will be preserved is important to determine, because it will mean resources can be directed to other, more vulnerable site types. Some of these sites may be accessible using underwater archaeological methods in the future, meaning mitigation should be directed to site types unlikely to survive sea level rise or storm surges. Finally, we need to be thinking not just about sites and architecture, but also about the long term curation of physical collections and records. Storing the archival records and collections within one or even several meters vertical elevation above modern sea level will need to be rethought, since such actions can no longer be considered a viable means of ensuring effective curation in perpetuity.

Conclusions

Although the scientific community recognizes the profound impact of humans on the natural environment in recent centuries, few institutions fund the investigation of long-term human-environmental interactions through database development like DINAA. The initial data collection and integration phase of DINAA has been undertaken largely voluntarily by project team members at several institutions, together with limited funding from the Archaeology Program of the National Science Foundation. This has allowed us to develop a proof-of-concept framework integrating archaeological data from 15 states [72, 73], for linkage to environmental and collections data sets. DINAA demonstrates how a truly continental archaeological database useful for research, resource management, and public education can be developed, and how it can be maintained and updated on a regular schedule by a sustainable community of scholars and stakeholders.

Linking archaeological site files and other data sets at broad scales catalyzes research across disciplines, promoting more holistic understanding of both human adaptation and environmental impacts. As multidisciplinary databases addressing sea level and other forms of global change are developed, the role of cultural resources are increasingly coming to be regarded as a critical factor when planning mitigation strategies [19, 27, 148, 149]. DINAA, through its adoption of an open data policy (within limitations regarding sensitive information), promotes information sharing and integration, not only of archaeological but paleoenvironmental, biogeographical, physiographic, and other data characterizing our environment. Within archaeology such approaches to data management are increasingly viewed as not only good science, but an ethical obligation [150]. DINAA has open-ended applications allowing researchers, land managers, and interested members of the public to examine the nature and scale of human responses to the dramatic fluctuations in temperature, biota, and sea level that have occurred over the ca. 15,000+ years people have lived in the Americas, and help inform our understanding of possible human responses to similar changes predicted for the future, questions of critical importance.

Hopefully there will be time to implement these suggestions. However, changes in sea level may be far greater and occur far faster than currently predicted. Delay in thinking about these matters and in seeking solutions accomplishes nothing. Developing data infrastructure like DINAA is crucial to multidisciplinary analyses linking differing kinds and sources of data together and rendering them interoperable. By facilitating the mapping of archaeological sites over time and at varying geographic scales, showing where people were on the landscape and how they reacted to changes in climate and biota, tools like DINAA are useful to addressing research and management concerns. These include helping people gain a much greater appreciation for American history and culture, and protecting the vulnerable heritage of indigenous communities. Linked data can be used to explore the impact of sea level rise on cultural and historical resources. The effects of sea level rise on cultural resources is intimately linked to the humanitarian and economic issues that need to be faced in all crises [44, 145]. Cultural resources, promoting an awareness of and appreciation for our heritage, are essential to our well-being, and a continuing source inspiration [26, 146, 147]. Population relocation and new infrastructure required to cope with sea level rise, we have seen, will have severe negative impacts on coastal and near-coastal cultural resources. Given the investment humanity has made in these areas, efforts should be directed to preventing and, if this is not possible, managing potential losses.

Cyberinfrastructure development is a critical part of 21st century archaeology, and projects like DINAA will make archaeological data increasingly useful and relevant to research, management, and public educational efforts. Data-driven archaeology can provide unparalleled insights into long-term human-environmental interactions, enabling archaeology to more fully participate in the efforts directed to understanding the impacts of climate change. Such knowledge is critical to making well informed forecasts and policy decisions about the consequences of rapid climate change, extreme weather events, and burgeoning populations, factors that will shape our civilization profoundly in the coming decades. While legal and ethical restrictions require that we safe-guard the precise location data behind this study (which is available from the agencies maintaining it [151]), DINAA makes data openly available with a lower level of spatial resolution to enable at least partial replication of these analyses, and most critically, to enable researchers in many fields of study to try other applications, using a framework built on information from the past to project trends forward in time.

Our species has witnessed comparable periods of dramatic climate change in the past, and understanding how we responded can provide valuable lessons, and hope, for the future. Indeed, these are some of the greatest lessons archaeology can teach us, by providing

information about how past human response, and resilience, as we move forward into an increasingly uncertain world.

Acknowledgments

Primary locational data for the archaeological sites used in this study is available from the site file managers of the states examined herein [151]. No permits were required for the described study, which complies with all relevant regulations. The authors express our deepest thanks to the SHPOs and site file managers in the states partnered with DINAA. Without their help, the analyses reported here would not have been possible. Thomas H. McGovern, Marcy Rockman, Kenneth E. Sassaman, and Martin P. Walker are also to be thanked for their advice and detailed comments, and the PLOS ONE reviewers and editors, as well as Stephen J. Yerka for preparing the graphics. The population data summarized in Table 3 was made utilizing the LandScan (2013)[™] High Resolution global Population Data Set copyrighted by UT-Battelle, LLC, operator of Oak Ridge National Laboratory under Contract No. DE-AC05-00OR22725 with the United States Department of Energy. The United States Government has certain rights in this Data Set. Neither UT-Battelle, LLC nor the United States Department of Energy, nor any of their employees, makes any warranty, express or implied, or assumes any legal liability or responsibility for the accuracy, completeness, or usefulness of the data set.

Author Contributions

Conceptualization: David G. Anderson, Thaddeus G. Bissett, Stephen J. Yerka, Joshua J. Wells, Eric C. Kansa, Sarah W. Kansa.

Data curation: Stephen J. Yerka, Eric C. Kansa, Sarah W. Kansa.

Formal analysis: David G. Anderson, Thaddeus G. Bissett, Stephen J. Yerka, Joshua J. Wells, Eric C. Kansa, Kelsey Noack Myers, R. Carl DeMuth, Devin A. White.

Funding acquisition: David G. Anderson, Stephen J. Yerka, Joshua J. Wells, Eric C. Kansa, Sarah W. Kansa.

Investigation: David G. Anderson, Thaddeus G. Bissett, Stephen J. Yerka, Joshua J. Wells, Kelsey Noack Myers, R. Carl DeMuth, Devin A. White.

Methodology: David G. Anderson, Thaddeus G. Bissett, Stephen J. Yerka, Joshua J. Wells, Kelsey Noack Myers, Devin A. White.

Project administration: David G. Anderson, Joshua J. Wells, Eric C. Kansa, Sarah W. Kansa.

Resources: Devin A. White.

Software: Stephen J. Yerka, Eric C. Kansa.

Supervision: David G. Anderson, Stephen J. Yerka, Eric C. Kansa, Sarah W. Kansa.

Validation: Stephen J. Yerka, Eric C. Kansa.

Visualization: Stephen J. Yerka, Eric C. Kansa.

Writing – original draft: David G. Anderson, Thaddeus G. Bissett, Stephen J. Yerka, Joshua J. Wells, Eric C. Kansa, Sarah W. Kansa, Kelsey Noack Myers, R. Carl DeMuth, Devin A. White.

Writing – review & editing: Stephen J. Yerka, Eric C. Kansa, Sarah W. Kansa, Kelsey Noack Myers, Devin A. White.

References

1. Allison I, Bindoff N, Bindschadler R, Cox P, de Noblet N, England M, et al. The Copenhagen diagnosis 2009: Updating the world on the latest climate science. Sydney: The University of New South Wales Climate Change Research Centre (CCRC); 2009. Available from <http://www.copenhagediagnosis.org/> Cited 25 October 2017.
2. IPCC (Intergovernmental Panel on Climate Change). Climate change 2014: Synthesis report. Contribution of Working Groups I, II and III to the Fifth Assessment Report of the Intergovernmental Panel on Climate Change [Core Writing Team, Pachauri RK, Meyer LA (eds.)]. IPCC, Geneva, Switzerland; 2014. Available from: <https://www.ipcc.ch/report/ar5/syr/> Cited 25 October 2017.
3. IPCC (Intergovernmental Panel on Climate Change) Climate change 2013: The physical science basis. Contribution of Working Group I to the Fifth Assessment Report of the Intergovernmental Panel on Climate Change [Core Writing Team: Stocker TF, Qin D, Plattner G-K, Tignor M, Allen SK, Boschung J, et al.]. Cambridge, UK: Cambridge University Press; 2013. Available from: <http://www.ipcc.ch/report/ar5/wg1/> Cited 25 October 2017.
4. Walsh J, Weuebbles D., Hayhoe K, Kossin J, Kunkel K, Stephens G, et al. Chapter 2: Our changing climate. In: Melillo J, Richmond T, Yohe G, editors. Climate change impacts in the United States: The third national climate assessment. Washington, D.C.: U.S. Global Change Research Program; 2014. pp. 19–67. Available from <http://nca2014.globalchange.gov/downloads> Cited 25 October 2017.
5. Dasgupta S, Laplante B, Meisner C, Wheeler D, Yan J. The impact of sea level rise on developing countries: a comparative analysis. *Climatic Change*. 2009; 93: 379–388.
6. McGranahan G, Balk D, Anderson B. Low coastal zone settlements. *Tiempo*. 2006; 59: 23–26.
7. McGranahan G, Balk D, Anderson B. The rising tide: assessing the risks of climate change and human settlements in low elevation coastal zones. *Environment and Urbanization*. 2007; 19: 17–37.
8. Neumann B, Vafeidis AT, Zimmermann J, Nicholls RJ. Future coastal population growth and exposure to sea-level rise and coastal flooding—a global assessment. *PLoS ONE*. 2015; 10: e0118571. <https://doi.org/10.1371/journal.pone.0118571> PMID: 25760037
9. Center for International Earth Science Information Network—CIESIN—Columbia University, United Nations Food and Agriculture Programme—FAO, and Centro Internacional de Agricultura Tropical—CIAT. 2005. Gridded population of the world, version 3 (GPWv3): Population count grid. Palisades, NY: National Aeronautics and Space Administration Socioeconomic Data and Applications Center (SEDAC); 2005. Available from: <http://sedac.ciesin.columbia.edu/data/set/gpw-v3-population-count> and <http://dx.doi.org/10.7927/H4639MPP>. Cited 25 October 2017.
10. Center for International Earth Science Information Network—CIESIN—Columbia University. 2013. Low elevation coastal zone (LE CZ) urban-rural population and land area estimates, version 2. 2016. Palisades, NY: National Aeronautics and Space Administration Socioeconomic Data and Applications Center (SEDAC); 2016. Available from: <http://sedac.ciesin.columbia.edu/data/set/lecz-urban-rural-population-land-area-estimates-v2> and <http://dx.doi.org/10.7927/H4MW2F2J> Cited 25 October 2017.
11. United Nations. Human settlements on the coast UN atlas of the oceans [Internet]. United Nations; 2016. Available: <http://www.oceansatlas.org/subtopic/en/c/114/> Cited 25 October 2017.
12. Bird MK. The impact of tropical cyclones on the archaeological record: an Australian example. *Archaeology in Oceania*. 1992; 27: 75–86.
13. Caffrey M, Beavers R. Protecting cultural resources in coastal US national parks from climate change. *George Wright Forum*. 2008; 25: 86–97.
14. Caffrey M, Beavers R. Planning for the impact of sea-level rise on US national parks. *Park Science*. 2013; 30: 6–13.
15. Erlandson JM. Racing a rising tide: global warming, rising seas, and the erosion of human history. *The Journal of Island and Coastal Archaeology*. 2008; 3: 167–169.
16. Erlandson JM. As the world warms: rising seas, coastal archaeology, and the erosion of maritime history. *Journal of Coastal Conservation*. 2012; 16: 137–142.
17. Fitzpatrick SM, Kappers M, Kaye Q. Coastal erosion and site destruction on Carriacou, West Indies. *Journal of Field Archaeology*. 2006; 31: 251–262.
18. Goetz P. Preserving Arctic archaeology in the 21st century: Threats of climate change. Unpublished MA thesis, Department of Anthropology, University of Waterloo. Waterloo; Canada; 2010.
19. Hambrecht G, Rockman M. International approaches to climate change and cultural heritage. *American Antiquity*. 2017; 82(4): 627–641.
20. Lewis RB. Sea-level rise and subsidence effects on Gulf Coast archaeological site distributions. *American Antiquity*. 2000; 525–541.

21. Peek K, Young R, Beavers R, Hoffman C, Diethorn B, Norton S. Adapting to climate change in coastal parks: Estimating the exposure of park assets to 1 m of sea-level rise [Internet]. Fort Collins: National Park Service; 2015. Available from: https://www.nature.nps.gov/geology/coastal/coastal_assets_report/2015_916_NPS_NRR_Coastal_Assets_Exposed_to_1m_of_Sea_Level_Rise_Peek_et_al.pdf Cited 25 October 2017.
22. Reeder-Myers LA. Cultural heritage at risk in the twenty-first century: A vulnerability assessment of coastal archaeological sites in the United States. *The Journal of Island and Coastal Archaeology*. 2015; 10: 436–445.
23. Reeder LA, Rick TC, Erlandson JM. Our disappearing past: a GIS analysis of the vulnerability of coastal archaeological resources in California's Santa Barbara Channel region. *Journal of Coastal Conservation*. 2012; 16: 187–197.
24. Reeder-Myers L, Erlandson JM, Muhs DR, Rick TC. Sea level, paleogeography, and archeology on California's northern Channel Islands. *Quaternary Research*. 2015; 83: 263–272.
25. Robinson MH, Alexander CR, Jackson CW, McCabe CP, Crass D. Threatened archaeological, historic, and cultural resources of the Georgia Coast: Identification, prioritization and management using GIS technology. *Geoarchaeology*. 2010; 25: 312–326.
26. Rockman M. Introduction: A L'Enfant plan for archaeology. In: Rockman M, Flatman J, editors. *Archaeology in society: Its relevance in the modern world*. New York: Springer; 2011. pp. 1–20.
27. Rockman M. The necessary roles of archaeology in climate change mitigation and adaptation. In: Rockman M, Flatman J, editors. *Archaeology in society: Its relevance in the modern world*. New York: Springer; 2011. pp. 193–215.
28. Rockman M. An NPS framework for addressing climate change with cultural resources. *The George Wright Forum*. 2015; 32(1): 37–50.
29. Rockman M, Morgan M, Ziaja S, Hambrecht G, Meadow A. Cultural resources climate change strategy. Washington, D.C.: Cultural Resources Partnerships and Science and Climate Change Response Program, National Park Service; 2016.
30. Rowland MJ. Climate change, sea-level rise and the archaeological record. *Australian Archaeology*, 1992; 34(1): 29–33. Available from <https://doi.org/10.1080/03122417.1992.11681449> Cited 25 October 2017.
31. Sandweiss DH, Kelley AR. Archaeological contributions to climate change research: The archaeological record as a paleoclimatic and paleoenvironmental archive. *Annual Review of Anthropology*. 2012; 41: 371–391.
32. Schupp CA, Beavers R, Caffrey M, editors. *Coastal adaptation strategies: Case studies*. Fort Collins: National Park Service, Geological Resources Division; 2015.
33. Shi B, Proust J-N, Daire M-Y, Lopez-Romero E, Regnaud H, Pian S. Coastal changes and cultural heritage (2): An experiment in the Vilaine estuary (Brittany, France). *The Journal of Island and Coastal Archaeology*. 2012; 7: 183–199.
34. Spennemann DH. Conservation management and mitigation of the impact of tropical cyclones on archaeological sites. In: Spennemann DH, Look DW, editors. *Disaster management programs for historic sites*. San Francisco: Association for Preservation Technology (Western Chapter) and the Johnstone Centre, Charles Stuart University; 2004. pp. 113–32.
35. Westley K, Bell T, Renouf M, Tarasov L. Impact assessment of current and future sea-level change on coastal archaeological resources—illustrated examples from northern Newfoundland. *The Journal of Island and Coastal Archaeology*. 2011; 6: 351–374.
36. Evans A, Keith M, Voisin E, Hesp P, Cook G, Allison M, et al. Archaeological analysis of submerged sites on the Gulf of Mexico outer continental shelf. New Orleans: U.S. Department of the Interior, Bureau of Ocean Energy Management, Gulf of Mexico OCS Region; 2012.
37. Faught MK. The underwater archaeology of paleolandscapes, Apalachee Bay, Florida. *American Antiquity*. 2004; 275–289.
38. Faught MK. Submerged paleoindian and archaic sites of the Big Bend, Florida. *Journal of Field Archaeology*. 2004;
39. Faught MK, Gusick AE. Submerged prehistory in the Americas. In: Benjamin J, Bonsall C, Pickard C, Fischer A, editors. *Submerged prehistory*. Oxford: Oxbow Books; 2011. pp. 145–157.
40. Gregory D. Development of tools and techniques to survey, assess, stabilise, monitor and preserve underwater archaeological sites: SASMAP. *The International Archives of the Photogrammetry, Remote Sensing and Spatial Information Sciences*. 2015; 1: 367–372.
41. McFadden P.S. Coastal dynamics and Pre-Columbian human occupation in Horseshoe Cove on the northern gulf coast of Florida, USA. *Geoarchaeology*. 2016; 31(5): 355–375.

42. Murphy P, Thackray D, Wilson E. Coastal heritage and climate change in England: Assessing threats and priorities. *Conservation and Management of Archaeological Sites*, 2009; 11(1): 9–15. Available from <https://doi.org/10.1179/135050309X12508566208281> Cited 25 October 2017.
43. Neal WH, OH Pilkey. Cemeteries in the sea [Internet]. *Coastal Care*. 2013. Available from <http://coastalcare.org/2013/11/cemeteries-in-the-sea/>: Cited 23 October 2017.
44. Oliver-Smith A, Hoffman SM. *Catastrophe and culture: The anthropology of disaster*. Santa Fe: School of American Research Press; 2012.
45. Pilkey OH, Pilkey-Jarvis L, Pilkey KC. *Retreat from a rising sea: Hard choices in an age of climate change*. New York: Columbia University Press. 2016.
46. Hinkel J, Lincke D, Vafeidis AT, Perrette M, Nicholls RJ, Tol RS, et al. Coastal flood damage and adaptation costs under 21st century sea-level rise. *Proceedings of the National Academy of Sciences*. 2014; 111: 3292–3297.
47. Haggarty JC. The 1990 Exxon cultural resource program: site protection and maritime cultural ecology in Prince William Sound and the Gulf of Alaska [Internet]. Anchorage: Exxon Shipping Company and Exxon Company USA; 1991. Available: <http://www.shorelinescat.com/Documents/Cultural%20Resources/cultural%20resources%20publications/B08%20Final%20Report%20of%20the%20Exxon%20Cultural%20Resources%20Program,%20Haggarty%20et%20al.pdf> Cited 25 October 2017.
48. HAMDANLAB. Gulf of Mexico SCHEMA: Shipwreck corrosion, hydrocarbon exposure, microbiology and archaeology [Internet]. University of Southern Mississippi Gulf Coast Research Lab; 2016. Available from: <https://hamdanlab.com/gom-schema/> Cited 25 October 2017.
49. Reger D, McMahan JD, Holmes CE. Exxon Valdez oil spill state/federal natural resource damage assessment final report effect of crude oil contamination on some archaeological sites in the Gulf of Alaska, 1991 investigations. Anchorage: Alaska Department of Natural Resources Division of Parks and Outdoor Recreation, Office of History and Archaeology; 1992.
50. Sorset SR, Rees MA. What are the potential effects of an oil spill on coastal archaeological sites? 2015. Annual Conference on Historical and Underwater Archaeology, Seattle, Washington, January 6–11, 2015.
51. Kowlok J. Case Study 8: Relocating the lighthouse, Cape Hatteras National Seashore, North Carolina. In: Schupp CA, Beavers R, Caffrey M, editors. *Coastal adaptation strategies: Case studies*. Fort Collins: National Park Service, Geological Resources Division; 2015. pp. 19–20.
52. Säve-Söderbergh T. *Temples and tombs of ancient Nubia: the international rescue campaign at Abu Simbel, Philae and other sites*. Paris: UNESCO; 1987.
53. Hassan F. The Aswan high dam and the international rescue Nubia campaign. *African Archaeological Review* 2007; 24(3–4): 73–94.
54. Holtz D, Markham A, Cell K, Ekwurzel B. National landmarks at risk: How rising seas, floods, and wild-fires are threatening the United States' most cherished historic sites [Internet]. Union of Concerned Scientists; 2014. Available from: http://www.ucsusa.org/sites/default/files/legacy/assets/documents/global_warming/National-Landmarks-at-Risk-Full-Report.pdf Cited 25 October 2017.
55. Altschul JH, Kintigh KW, Klein TH, Doelle WH, Hays-Gilpin KA, Herr SA, et al. Fostering synthesis in archaeology to advance science and benefit society. *Proceedings of the National Academy of Sciences*. 2017; 114: 10999–11002.
56. Guedes JAA, Crabtree SA, Bocinsky RK, Kohler TA (2016) Twenty-first century approaches to ancient problems: Climate and society. *Proceedings of the National Academy of Sciences*. 2016; 113: 14483–14491.
57. Kintigh KW, Altschul JH, Beaudry MC, Drennan RD, Kinzig AP, Kohler TA, et al. Grand challenges for archaeology. *American Antiquity*. 2014; 79: 5–24.
58. Kintigh KW, Altschul JH, Beaudry MC, Drennan RD, Kinzig AP, Kohler TA, et al. Grand challenges for archaeology. *Proceedings of the National Academy of Sciences*. 2014; 111: 879–880.
59. Anderson DG, Maasch KA, Sandweiss DH, Mayewski PA. Climate and culture change: exploring Holocene transitions. In: Anderson DG, Maasch KA, Sandweiss DH, editors. *Climate change and cultural dynamics: a global perspective on mid-Holocene transitions*. Amsterdam: Academic Press; 2007. pp. 1–23.
60. Anderson DG, Russo M, Sassaman KE. Mid-Holocene cultural dynamics in southeastern North America. In: Anderson DG, Maasch KA, Sandweiss DH, editors. *Climate change and cultural dynamics: A global perspective on mid-Holocene transitions*. Amsterdam: Academic Press; 2007. pp. 457–489.
61. Anderson DG, Bissett TG, Yerka SJ. The Late Pleistocene human settlement of interior North America: the role of physiography and sea-level change. In: Graf K, Ketron C, Waters M, editors. *Paleoamerican odyssey*. College Station: Texas A&M University Press; 2013. pp. 235–255.

62. Anderson DG, Bissett TG. The initial colonization of North America: sea level change, shoreline movement, and great migrations. In: Frachetti M, Spengler R, editors. *Mobility and ancient society in Asia and the Americas*. New York: Springer; 2015. pp. 59–88.
63. Fiske S, Crate S, Crumley C, Galvin K, Lazrus H, Lucero L, et al. Changing the atmosphere. *Anthropology and climate change: Final report of the AAA global climate change task force*. Arlington: American Anthropological Association; 2014.
64. Lane PJ. Archaeology in the age of the Anthropocene: A critical assessment of its scope and societal contributions. *Journal of Field Archaeology*. 2015; 40: 485–498.
65. Lightfoot KG, Cuthrell RQ. Anthropogenic burning and the Anthropocene in late-Holocene California. *The Holocene*. 2015; 25: 1581–1587.
66. Sassaman KE. Futurologists look back. *Archaeologies*. 2012; 8: 250–268.
67. Sassaman KE. Drowning out the past: How humans historicize water as water historicizes them. In: Robb J, Pauketat TR, editors. *Big histories, human lives: Tackling problems of scale in archaeology*. Santa Fe: School for Advanced Research Press; 2013. pp. 171–191.
68. Sassaman KE, McFadden PS, Monés MP, Palmiotto A, Randall AR. Northern Gulf coast archaeology of the here and now. In: Wallis NJ, Randall AR, editors. *New Histories of Precolumbian Florida*. Gainesville: University Press of Florida; 2014. pp. 143–162.
69. Sassaman KE. A constellation of practice in the experience of sea-level rise. In: Roddick AP, Stahl AB, editors. *Knowledge in motion: Constellations of learning across time and place*. Tucson: University of Arizona Press; 2016. pp. 271–298.
70. Sassaman KE, Wallis NJ, McFadden PS, Mahar GJ, Jenkins JA, Donop MC, et al. Keeping pace with rising sea: The first 6 years of the Lower Suwannee Archaeological Survey, Gulf coastal Florida. *The Journal of Island and Coastal Archaeology*. 2016; 1–27.
71. Wells JJ, Kansa EC, Kansa SW, Yerka SJ, Anderson DG, Myers KN, et al. Web-based discovery and integration of archaeological historic properties inventory data: The Digital Index of North American Archaeology (DINAA). *Literary and Linguistic Computing*. 2014; 29: 349–360.
72. Kansa EC, Kansa SW, Wells JJ, Yerka SJ, Myers KN, DeMuth RC, et al. 2017. The Digital Index of North American Archaeology (DINAA): Networking government data to navigate an uncertain future for the past. *Antiquity*. Forthcoming 2018.
73. DINAA (Digital Index of North American Archaeology). Project Digital Index of North American Archaeology (DINAA) publication and integration of North American archaeological site file records [Internet]. 2017. Available from: <http://dx.doi.org/10.6078/M7N877Q0> <https://opencontext.org/projects/416A274C-CF88-4471-3E31-93DB825E9E4A> Cited 25 October 2017.
74. Alessa L, Kliskey A, Barton M, Altaweel M, Ozik J, Park T, et al. Best practices for integrating social sciences into social Ecological Systems Science: Future Directions for Building a More Resilient America. Boise: Center for Resilient Communities, University of Idaho; 2015.
75. Azmi NF, Ahmad F, Ali AS. Heritage place inventory: A tool for establishing the significance of places. *Journal of Design and Built Environment*. 2015; 15.
76. Gupta N, Devillers R. Geographic visualization in archaeology. *Journal of Archaeological Method and Theory*. 2017; 24(3): 852–885.
77. Heitman C., Martin W, Plog S. Innovation through large-scale integration of legacy records: Assessing the “value added” in cultural heritage resources. *Journal on Computing and Cultural Heritage (JOCCH)*. 2017; 10(3):17.
78. Iowa archaeology. Florida and Georgia site files launch DINAA project—Heritage Bytes. Iowa is in the process of joining the Digital Index of North American Archaeology! [Internet]. 2015. Available from: <http://iowaarchaeology.tumblr.com/post/80072317378/florida-and-georgia-site-files-launch-dinaa> Cited 25 October 2017.
79. McCoy M.D. Geospatial Big Data and archaeology: Prospects and problems too great to ignore. *Journal of Archaeological Science*. 2017; 84:74–94.
80. Raviele M. Archaeology and an interdisciplinary digital age [Internet]. Institute of Museum and Library Services; 2014. Available from: <https://www.ims.gov/news-events/upnext-blog/2014/05/archaeology-and-interdisciplinary-digital-age> Cited 25 October 2017.
81. Sheehan B. Comparing digital archaeological repositories: tDAR versus Open Context. *Behavioral and Social Sciences Librarian*. 2015; 34: 173–213.
82. Smith J. Archaeology for everyone: a Virginia digital repository institute on digital archaeology method & practice [Internet]. Institute on Digital Archaeology Method and Practice; 2015. Available from: <http://digitalarchaeology.msu.edu/archaeology-for-everyone-a-virginia-digital-repository/> Cited 25 October 2017.

83. Smith M. First Floridians, First Americans conference review [Internet]. 2015. Available from: <https://seacunderground.wordpress.com/2015/10/29/first-floridians-first-americans-conference-review/> Cited 25 October 2017.
84. Sobotkova A, Ross SA, Ballsun-Stanton B, Fairbairn A, Thompson J, VanValkenburgh P. 3.2. Measure Twice, Cut Once: Cooperative Deployment of a Generalized, Archaeology-Specific Field Data Collection System. In Averett EW, Gordon JM, Counts DB, editors. *Mobilizing the Past for a Digital Future: The Potential of Digital Archaeology*. Grand Forks, ND: The Digital Press at the University of North Dakota. 2016. pp. 337–371. Available from http://dc.uwm.edu/arhist_mobilizingthepast/15/ Cited 25 October 2017.
85. Spigelman M, Roberts T, Fehrenbach S. 3.4. The development of the PaleoWay digital workflows in the context of archaeological consulting. In Averett EW, Gordon JM, Counts DB, editors. *Mobilizing the past for a digital future: The potential of digital archaeology*. Grand Forks, ND: The Digital Press at the University of North Dakota. 2016. pp. 399–418. Available from http://dc.uwm.edu/arhist_mobilizingthepast/17/ Cited 25 October 2017.
86. Ullah II. Integrating older survey data into modern research paradigms identifying and correcting spatial error in “legacy” datasets. *Advances in Archaeological Practice*. 2015; 3: 331–350.
87. Archaeology Southwest. Archaeology Café - Exploring and protecting the places of our past. 2012. Available from: <https://www.archaeologysouthwest.org/event/preserving-the-places-of-our-shared-past-2/> Cited 25 October 2017.
88. Anderson DG, Miller DS, Yerka SJ, Gillam JC, Johanson EN, Anderson DT, Goodyear AC, Smallwood AM. PIDBA (Paleoindian Database of the Americas) 2010: current status and findings. *Archaeology of Eastern North America*. 2010; 38: 63–90.
89. PIDBA (Paleoindian Database of the Americas). PIDBA: The Paleoindian database of the Americas [Internet]. 2017. Available from: <http://pidba.utk.edu/> Cited 25 October 2017.
90. White A. Eastern Woodlands household archaeology database project [Internet]. 2017. Available from: <http://www.householdarchaeology.org/> Cited 25 October 2017.
91. CARD (Canadian Archaeological Radiocarbon Database). Welcome to CARD 2.0. [Internet]. 2017. Available from: <http://www.canadianarchaeology.ca/> Cited 25 October 2017.
92. DAACS (Digital Archaeological Archive of Comparative Slavery). Digital Archaeological Archive of Comparative Slavery [Internet]. 2017. Available from: <http://www.daacs.org/> Cited 25 October 2017.
93. CRA (Chaco Research Archive). Enhancing access to over a century of archaeological research in Chaco Canyon, New Mexico [Internet]. 2017 [cited 24 Aug 2016]. Available from: <http://www.chacoarchive.org/cra/> Cited 25 October 2017.
94. PeriodO. PeriodO: A gazetteer of period definitions for linking and visualizing data [Internet]. 2017. Available from: <http://perio.do/> Cited 25 October 2017.
95. tDAR (The Digital Archaeological Record). tDAR (The Digital Archaeological Record): A service of Digital Antiquity [Internet]. 2017. Available from: <https://www.tdar.org/> Cited 25 October 2017.
96. Pelagios Commons [Internet] 2017. Available from: <http://commons.pelagios.org/> Cited 25 October 2017.
97. Sanger MC. Leaving the rings: Shell ring abandonment and the end of the Late Archaic. In: Thomas DH, Sanger MC, editors. *Trend, tradition, and turmoil: What happened to the southeastern Archaic? Proceedings of the Third Caldwell Conference, St Catherines Island, Georgia, May 9–11, 2008*. New York: Anthropological Papers of the American Museum of Natural History, No. 93; 2010. pp. 201–215.
98. Thompson VD, Turck JA. Adaptive cycles of coastal hunter-gatherers. *American Antiquity*. 2009; 255–278.
99. Thompson VD, Turck JA. Island archaeology and the native American economies (2500 BC–AD 1700) of the Georgia coast. *Journal of Field Archaeology*. 2010; 35: 283–297.
100. NPS NRHP (National Park Service, National Register of Historic Places Program: Research). National Register of Historic Places program: Research database [Internet]. 2017. Available online at <http://www.nps.gov/nr/research/> Cited 25 October 2017.
101. O'Donoghue JM. Living in the low country: modeling archaeological site location in the Francis Marion National Forest, South Carolina. Knoxville: Unpublished MA thesis, Department of Anthropology, University of Tennessee; 2008.
102. Thomas DH. Late Holocene sea levels and the changing archaeological landscape of St. Catherines Island. In: Thomas DH, Sanger MC, editors. *Trend, tradition, and turmoil: What happened to the southeastern Archaic? Proceedings of the Third Caldwell Conference, St Catherines Island, Georgia, May 9–11, 2008*. New York: Anthropological Papers of the American Museum of Natural History, No. 93; 2010. pp. 42–47.

103. Marzeion B, Levermann A. Loss of cultural world heritage and currently inhabited places to sea-level rise. *Environmental Research Letters*. 2014; 9: 34001.
104. Mitchell P. Practising archaeology at a time of climatic catastrophe. *Antiquity*. 2008; 82: 1093–1103.
105. Perez-Alvaro E. Climate change and underwater cultural heritage: Impacts and challenges. *Journal of Cultural Heritage*. 2016; Available from: <http://www.sciencedirect.com/science/article/pii/S1296207416300334> Cited 25 October 2017.
106. Bright EA, Coleman PR, Rose AN, Urban ML. LandScan 2011. 2011 ed. 2012. LandScan. Oak Ridge National Laboratory, Oak Ridge, TN.
107. ORNL (Oak Ridge National Laboratory Geographic Information Science, Technology, Computational Science, and Engineering Division). Landscan 2013 [Internet]. 2017. Available from: <http://web.ornl.gov/sci/landscan/index.shtml> Cited 25 October 2017.
108. USGS (United States Geological Survey). United States Geological Survey's national elevation data-set [Internet]. 2017. Available from: <http://nationalmap.gov/elevation.html> Cited 25 October 2017.
109. Strauss BH, Ziemiński R, Weiss JL, Overpeck JT. Tidally adjusted estimates of topographic vulnerability to sea level rise and flooding for the contiguous United States. *Environmental Research Letters*. 2012; 7: 14033.
110. Titus JG, Wang J. Maps of lands close to sea level along the middle Atlantic Coast of the United States: an elevation data set to use while waiting for LIDAR. Background Documents Supporting Climate Change Science Program Synthesis and Assessment Product 41. Washington, D.C.: U.S. Environmental Protection Agency; 2008. pp. 2–44.
111. Hanson T. Biloxi-Chitimacha-Choctaw get \$48 million to move off of disappearing Louisiana island. Indian Country [Internet]. 2016. Available from: <http://indiancountrytodaymedianetwork.com/2016/02/05/biloxi-chitimacha-choctaw-get-48-million-move-disappearing-louisiana-island-163310> Cited 25 October 2017.
112. Beavers RL, Caffrey MA. Case study 24: Storm surge and sea level change data support planning, National Park Service (NPS) Geologic Resources Division, Colorado. In: Schupp CA, Beavers RL, Caffrey MA, editors. *Coastal Adaptation Strategies: Case Studies*. Fort Collins: National Park Service, Geological Resources Division; 2015. pp. 19–20.
113. Melillo JM., Richmond TC, Yohe GW, editors. *Climate change impacts in the United States: The third national climate assessment* [Internet] 2014. Washington, D.C.:U.S. Global Change Research Program <https://doi.org/10.7930/J0Z31WJ2> Available from: <http://nca2014.globalchange.gov/downloads> Cited 25 October 2017.
114. Spennemann DH. The impact of cyclonic tidal surge on archaeological sites in Tonga. *Bulletin of the Indo-Pacific Prehistory Association*. 1987; 7: 75–87.
115. Spennemann DH. Cultural heritage conservation during emergency management: luxury or necessity? *International Journal of Public Administration*. 1999; 22: 745–804.
116. Donoghue JF. Sea level history of the northern Gulf of Mexico coast and sea level rise scenarios for the near future. *Climatic Change*. 2011; 107: 17–33.
117. Dasgupta S, Laplante B, Meisner C, Wheeler D, Yan J. The impact of sea level rise on developing countries: a comparative analysis. Washington, D.C.: World Bank Policy Research Working Paper 4136. 2007. Available from <https://openknowledge.worldbank.org/bitstream/handle/10986/7174/wps4136.pdf> Cited 25 October 2017.
118. Nicholls RJ, Cazenave A. Sea-level rise and its impact on coastal zones. *Science*. 2010; 328: 1517–1520. <https://doi.org/10.1126/science.1185782> PMID: 20558707
119. Weiss JL, Overpeck JT, Strauss B. Implications of recent sea level rise science for low-elevation areas in coastal cities of the conterminous USA. *Climatic Change*. 2011; 105: 635–645.
120. González J, Törnqvist T. Coastal Louisiana in crisis: Subsidence or sea level rise. *EOS*. 2006; 87: 493–498.
121. Moore LJ, Patsch K, List JH, Williams SJ. The potential for sea-level-rise-induced barrier island loss: Insights from the Chandeleur Islands, Louisiana, USA. *Marine Geology*. 2014; 355: 244–259.
122. Hutchings RM. *Maritime heritage in crisis: Indigenous landscapes and global ecological breakdown*. New York: Routledge; 2017.
123. Wolinsky MA, Murray BA. A unifying framework for shoreline migration: 2. Application to wave-dominated coasts. *Journal of Geophysical Research* 2009; 114 F01009. Available from <http://onlinelibrary.wiley.com/doi/10.1029/2007JF000856/pdf> Cited 25 October 2017.
124. Rogers LJ, Moore LJ, Goldstein EB, Hein CJ, Lorenzo-Truba J, Ashton AD. Anthropogenic controls on overwash deposition: Evidence and consequences. *Journal of Geophysical Research, Earth Surface*. 2015; Available from <http://onlinelibrary.wiley.com/doi/10.1002/2015JF003634/epdf> Cited 25 October 2017.

125. Zhong L, Li M, Foreman, MGG. Resonance and sea level variability in Chesapeake Bay. *Continental Shelf Research*. 2008; 28: 2565–2573
126. Yang Z, Wang T, Voisin N, Copping A. Estuarine response to river flow and sea-level rise under future climate change and human development. *Estuarine, Coastal, and Shelf Science*. 2015; 156: 19–30.
127. Nutley DM. The last global warming? Archaeological survival in Australian waters. Adelaide, South Australia: Flinders University, Department of Archaeology; 2006. Available from <https://ehit.flinders.edu.au/archaeology/departments/publications/MAMARS/MAMS%20PDF/10%20Nutley%20final.pdf> Cited 25 October 2017.
128. Zelinsky W. Gathering places for America's dead: How many, where, and why? *The Professional Geographer*. 1994; 46(1): 29–38.
129. Clement J, Belin A d'A, Bean M, Boling T, Lyons J. A strategy for improving the mitigation policies and practices of the Department of the Interior: A report to the Secretary of the Interior from the Energy and Climate Change Task Force. US Department of the Interior: Washington, D.C.; 2014.
130. Berenfeld ML. Planning for permanent emergency: "Triage" as a strategy for managing cultural resources threatened by climate change. *The George Wright Forum*. 2015; 32: 5–12.
131. Alexander C, Robinson M, Jackson C, McCabe C, Crass D. Final report threatened archaeological, historic and cultural resources of the Georgia coast: Identification, prioritization and management using GIS technology. Brunswick: Georgia Coastal Zone Management Program, Georgia Department of Natural Resources, Coastal Resource Division; 2008.
132. Schwadron M. Case Study 3: Shell mound sites threatened by sea level rise and erosion, Canaveral National Seashore, Florida. In: Schupp CA, Beavers R, Caffrey M, editors. *Coastal adaptation strategies: Case studies*. Fort Collins: National Park Service, Geological Resources Division; 2015. pp. 7–8. NPS 999/129700.
133. Balsillie JH, Donoghue JF. High resolution sea-level history for the Gulf of Mexico since the last glacial maximum. Tallahassee: Florida Geological Survey Report of Investigations 103; 2004.
134. Balsillie JH, Donoghue JF. Northern Gulf of Mexico sea-level history for the past 20,000 years. In: Buster N, Holmes C, editors. *The Gulf of Mexico, its origin, waters, biota and human impacts: Vol 1*, Geology. Corpus Christi: Harte Research Institute for Gulf of Mexico Studies; 2009. pp. 53–69.
135. Russo M. Southeastern mid-Holocene coastal settlements. In: Sassaman KE, Anderson DG, editors. *Archaeology of the mid-Holocene southeast*. Gainesville: University Press of Florida; 1996. pp. 177–199.
136. Russo M. Archaic shell rings of the Southeast. Washington, D.C.: U.S. National Historic Landmark theme study. Washington, D.C.: National Park Service; 2006.
137. Torresan S, Critto A, Dalla Valle M, Harvey N, Marcomini A. Assessing coastal vulnerability to climate change: comparing segmentation at global and regional scales. *Sustainability Science*. 2008; 3: 45–65.
138. King TF. *Saving places that matter: A citizen's guide to the National Historic Preservation Act*. Walnut Creek, California: Left Coast Press; 2012.
139. NPS (National Park Service). Applying National Park Service management policies in the context of climate change. Washington, D.C.: Policy Memorandum 6 March 2012, Office of the Director, National Park Service; 2012.
140. NPS (National Park Service). Climate change and stewardship of cultural resources. Washington, D.C.: Policy Memorandum 14–02, Office of the Director, National Park Service; 2014. Available from <https://www.nps.gov/policy/PolMemos/PM-14-02.htm> Cited 25 October 2017.
141. United Nations. Framework convention on climate change non-economic losses in the context of the work programme on loss and damage technical paper [Internet]. United Nations; 2013. Available from: <http://unfccc.int/resource/docs/2013/tp/02.pdf> Cited 25 October 2017.
142. United Nations. Sendai framework for disaster risk reduction 2015–2030 [Internet]. United Nations; 2015. Available from: http://www.preventionweb.net/files/43291_sendaiframeworkfordrren.pdf Cited 25 October 2017.
143. Pritchard EE, Ahlman TM. *TVA archaeology: seventy-five years of prehistoric site research*. Knoxville: University of Tennessee Press; 2009.
144. Hally DJ. *Ocmulgee Archaeology, 1936–1986*. Athens: University of Georgia Press; 1994.
145. Hoffman SM. After Atlas shrugs: cultural change or persistence after a disaster. In: Oliver-Smith A, Hoffman SM, editors. *The angry earth: Disaster in anthropological perspective*. New York: Routledge; 1999. pp. 302–326.
146. Sabloff JA. *Archaeology matters: action archaeology in the modern world*. Walnut Creek, California: Left Coast Press; 2008.

147. United Nations. Framework Convention on Climate Change Non-economic losses in the context of the work programme on loss and damage [Internet]. United Nations; 2013. Available from: <http://unfccc.int/resource/docs/2013/tp/02.pdf> Cited 25 October 2017.
148. Vafeidis AT, Nicholls RJ, McFadden L, Tol RSJ, Hinkel J, Spencer T, et al. A new global coastal database for impact and vulnerability analysis to sea-level rise. *Journal of Coastal Research*, 2008; 24(4): 917–924. Available from <https://doi.org/10.2112/06-0725.1> Cited 25 October 2017.
149. DINAS-COAST: Dynamic and interactive assessment of national, regional and global vulnerability of coastal zones to climate change and sea-level rise. 2017. Available from <http://databases.eucc-d.de/plugins/projectsdb/project.php?show=296> Cited 25 October 2017.
150. Marwick B, d'Alpoim Guedes J, Barton CM, Bates LA, Baxter M, Bevan A, et al. Open science in archaeology. *The SAA Archaeological Record* 2017; 17(4): 8–14.
151. Georgia SHPO, Virginia Department of Historic Resources (VA-DHR), Florida Department of State, Division of Historical Resources (FDOS-DHR), South Carolina Institute of Archaeology and Anthropology (SCIAA), University of Alabama's Office of Archaeological Research (OAR), Louisiana Office of Cultural Development, Division of Archaeology, Maryland Historical Trust, North Carolina Office of State Archaeology (OSA). Coastal State Site Data for Sea-Level Rise Modeling. 2017 From Georgia Archaeological Site File (GASF), Virginia Site Files, Florida Site Files, South Carolina SHPO, Alabama Site Files, Louisiana Site Files, Maryland Site Files, North Carolina Site Files. Edited or directed by: David G. Anderson, Joshua Wells, Stephen Yerka, Sarah Whitcher Kansa, Eric C. Kansa. Released: 2017-03-01. Open Context. Available from: <http://opencontext.org/tables/0c14c4ad-fce9-4291-a605-8c065d347c5d> <http://dx.doi.org/10.6078/M7ST7MRR> Cited 25 October 2017.