

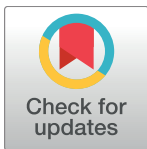
RESEARCH ARTICLE

# The potential role of genetic assimilation during maize domestication

Anne Lorant<sup>1</sup>, Sarah Pedersen<sup>2</sup>, Irene Holst<sup>3</sup>, Matthew B. Hufford<sup>2</sup>, Klaus Winter<sup>3</sup>, Dolores Piperno<sup>3,4</sup>, Jeffrey Ross-Ibarra<sup>1,5\*</sup>

**1** Dept. of Plant Sciences, University of California Davis, Davis, CA, United States of America, **2** Department of Ecology, Evolution, and Organismal Biology, Iowa State University, Ames, IA, United States of America, **3** Smithsonian Tropical Research Institute, Panama, Republic of Panama, **4** Department of Anthropology, Smithsonian National Museum of Natural History, Washington, DC, United States of America, **5** Genome Center and Center for Population Biology, University of California Davis, Davis, CA, United States of America

\* [rossibarra@ucdavis.edu](mailto:rossibarra@ucdavis.edu)



**OPEN ACCESS**

**Citation:** Lorant A, Pedersen S, Holst I, Hufford MB, Winter K, Piperno D, et al. (2017) The potential role of genetic assimilation during maize domestication. PLoS ONE 12(9): e0184202. <https://doi.org/10.1371/journal.pone.0184202>

**Editor:** Lewis Lukens, University of Guelph, CANADA

**Received:** February 17, 2017

**Accepted:** August 18, 2017

**Published:** September 8, 2017

**Copyright:** This is an open access article, free of all copyright, and may be freely reproduced, distributed, transmitted, modified, built upon, or otherwise used by anyone for any lawful purpose. The work is made available under the [Creative Commons CC0](https://creativecommons.org/licenses/by/4.0/) public domain dedication.

**Data Availability Statement:** All the raw sequencing data files are available from the NCBI Sequence Read Archive database (BioProject ID PRJNA391707).

**Funding:** This work was funded from the US National Science Foundation <https://www.nsf.gov/> (IOS-0922703 and IOS-1238014) JRI, USDA <https://usdasearch.usda.gov/> (Hatch project CA-D-PLS-2066-H) JRI, and the Smithsonian Institution. The funders had no role in study design, data collection and analysis, decision to publish, or preparation of the manuscript.

## Abstract

Domestication research has largely focused on identification of morphological and genetic differences between extant populations of crops and their wild relatives. Little attention has been paid to the potential effects of environment despite substantial known changes in climate from the time of domestication to modern day. In recent research, the exposure of teosinte (i.e., wild maize) to environments similar to the time of domestication, resulted in a plastic induction of domesticated phenotypes in teosinte. These results suggest that early agriculturalists may have selected for genetic mechanisms that cemented domestication phenotypes initially induced by a plastic response of teosinte to environment, a process known as genetic assimilation. To better understand this phenomenon and the potential role of environment in maize domestication, we examined differential gene expression in maize (*Zea mays* ssp. *mays*) and teosinte (*Zea mays* ssp. *parviglumis*) between past and present conditions. We identified a gene set of over 2000 loci showing a change in expression across environmental conditions in teosinte and invariance in maize. In fact, overall we observed both greater plasticity in gene expression and more substantial changes in co-expression networks in teosinte across environments when compared to maize. While these results suggest genetic assimilation played at least some role in domestication, genes showing expression patterns consistent with assimilation are not significantly enriched for previously identified domestication candidates, indicating assimilation did not have a genome-wide effect.

## Introduction

The development of agricultural societies 12,000–9,000 years ago (ka) was one of the most transformative events in human and ecological history and was made possible by plant and animal domestication [1, 2]. During domestication, crops evolved a suite of phenotypic traits, collectively known as the domestication syndrome, that distinguish them from their wild relatives [3]. Modifications due to domestication frequently include, for example, gigantism in the

**Competing interests:** The authors have declared that no competing interests exist.

harvested plant part, reduced branching, and loss of shattering [3]. Scientists have sought for centuries to understand the evolution of crops during domestication, making inferences based on imperfect genetic and archaeological data. Population genetic analysis of changes associated with domestication are limited by the still sparse availability of ancient DNA, and the archaeological record is often chronologically coarse and geographically uneven (e.g. [1, 2]). As a result of these limitations, our current understanding of the morphological and molecular differences between domesticates and their wild ancestors is based almost exclusively on living representatives of those taxa. Most of what is known about maize domestication, for example, has been drawn from comparisons between extant cultivated and wild plants. Today, profound morphological differences in vegetative architecture and inflorescence sexuality distinguish domesticated maize (*Zea mays* ssp. *mays*) and its wild ancestor teosinte (*Zea mays* ssp. *parviglumis* Iltis and Doebley; hereafter *parviglumis*). Modern teosinte has long lateral branches tipped by tassels (male inflorescences) and secondary branches bearing ears (female inflorescences) with a few small seeds covered by hard fruit cases that mature sequentially over a period of a few months. Maize, in contrast, has a single main stem terminating in a tassel and few dramatically shortened lateral branches terminated by ears instead of tassels. Maize seeds are not covered by fruit cases and its cobs mature at about the same time. These differences, the most dramatic documented for any major crop/ancestor pair, led to a century-long debate about maize ancestry [4–6].

Because of its importance economically and as a genetic model organism, the genetics underlying the process of maize domestication has received considerable attention. Early crossing work by Beadle [4] suggested as few as five genes could be responsible for the major vegetative architecture and inflorescence sexuality differences between maize and teosinte. More recently, work mapping quantitative trait loci (QTL) found generally consistent results, identifying six major QTL [7]. The vegetative architecture and inflorescence sexuality differences noted above, for example, are to a large degree controlled by the major QTL teosinte branched1 (*tb1*) through a change in gene expression occurring early in plant development [8–10]. Evidence of positive selection during domestication has been found at many more loci than those identified as QTL, however [11–15], as genome-wide scans find that as much as 5% of the genome may have played a functional role in domestication [16, 17]. While there are examples such as *tg1* in which selection acted on an amino acid substitution changing the protein sequence of a gene [12], considerable evidence suggests that much of the evolution during domestication was regulatory in nature. Not only do genes showing evidence of selection show directional changes in expression [17], but many of the transcription and co-expression networks of maize have been substantially modified during domestication [18] due in part to change in *cis* regulatory elements [19].

In spite of this large body of work, domestication research has primarily focused on comparisons of extant crops and wild relatives and has largely ignored the effects of changing environmental conditions during the timeframe of crop evolution. Agricultural beginnings occurred during a period of profound global environmental change as the Pleistocene was ending and transitioning to the Holocene interglacial period [1, 20]. It is well documented that atmospheric CO<sub>2</sub> and temperature were considerably lower than at present during both the Late Pleistocene (c. 14–11ka) and earliest Holocene (c. 11–9ka) [21–25]. Recent experimental work by Piperno and coauthors [26] demonstrated remarkable phenotypic changes in teosinte exposed to temperatures and atmospheric CO<sub>2</sub> similar to those experienced during the Late Pleistocene and early Holocene. These changes included maize-like vegetative architecture, inflorescence sexuality, and seed maturation, together with decreased plant height, biomass, and seed yield [26]. This work points to the possibility that early cultivators may have worked with phenotypes considerably different from those of modern teosinte. Furthermore, because

some of the observed changes under experimental environments appear to have been a result of phenotypic (developmental) plasticity, the results suggest a possible role for plasticity in maize domestication [26].

Developmental or phenotypic plasticity refers to the inherent capacity of organisms to rapidly produce novel phenotypes through one of several developmental pathways in direct response to changing environment (e.g., [27–31]). Plasticity is now established as a mainstream concept in evolution and ecology and is increasingly considered to be fundamental for understanding the genesis of phenotypes [32–35]. Both early and recent research has also shown that genetic modifications can cement plastic phenotypes, making them stable and heritable [36, 37]. One such mechanism is genetic assimilation (GA), a process that was first investigated during the early period of the Modern Synthesis [37, 38]. Genetic assimilation involves a loss of plasticity and fixed expression across environments through reconfiguration of pre-existing genetic variation after a number of generations of growth in inducing conditions. Recent studies have demonstrated GA likely occurring in a variety of organisms, from tetrapods to *Solanum* spp. to early *Homo*, though its frequency and importance are still debated [39–41].

Here we extend results from Piperno *et al.* [26] on teosinte responses to environmental changes, investigating the potential role of plasticity in a transcriptome-wide analysis of differential gene expression in both teosinte and maize in modern and early Holocene climate conditions. We hypothesized that expression-level changes may have constituted an initial plastic response to changing environment at the time of domestication that was later canalized through the process of GA. We find a large number of loci that show environmentally-mediated differential expression in teosinte but not maize, including some with functions consistent with phenotypic differences observed between different experimental environments and between maize and teosinte. While population genetic evidence and enrichment analyses suggest these loci are not enriched for genes showing signals of selection during domestication, a number of loci nonetheless coincide with previously identified selective sweeps, potentially suggesting a role for GA during maize domestication. Finally, we also find a large number of genes differentially expressed in teosinte that are not identified as domestication candidates but that may nevertheless shed important light on plant responses during domestication.

## Materials and methods

### Growth chamber experiment

Seeds were provided by the USDA North Central Regional Plant Introduction Station located in Ames, Iowa. We sampled three individuals of four natural populations of *parviglumis* representative of the current geographic and elevational range of the subspecies [42] as well as two individuals of four maize inbred lines (S1 Table).

We undertook two grow-outs in 2013 and 2014 with teosinte and maize, respectively, during their typical growing periods from July to December in two naturally-lit glass environmental chambers housed at the Gamboa field station at the Smithsonian Tropical Research Institute in Panama. One chamber was adjusted to Early Holocene (EH) temperature (ca. 23°C) and CO<sub>2</sub> (ca. 260–265 ppmv) levels determined for the low elevation Neotropics including Mesoamerica for ca. 10,000–9000 ka from paleoecological research and ice core data [21–25]. The other chamber served as a modern ambient (MA) control and was kept at ambient CO<sub>2</sub> levels and temperatures, characteristic of *parviglumis* environments today [42].

The EH chamber average CO<sub>2</sub> and temperature levels were 259.7 ppmv and 23.3°C and 260.8 ppmv and 23.2°C in 2013 and 2014, respectively. The MA average chamber temperature

was 25.1°C in both years, with an average CO<sub>2</sub> of 371 and 374 ppmv, respectively. Additional details on chamber environments can be found in [26].

Plants were germinated from seed in five-gallon pots in natural topsoil from a local orchard and watered without fertilizer three to four times per week. In 2013 three plants were grown from each of the four *parviglumis* accessions in each chamber, followed by two replicates of each of the four maize inbreds in each chamber in 2014. While this leads to a confounding effect of year, we are unaware of any reason why the very small chamber differences between the two years would contribute to the observed gene expression differences between *parviglumis* and maize (see below). We recorded weekly measurements of plant height, branch length and number, and inflorescence characteristics. After plants were harvested at maturity they were air dried and we measured the total vegetative biomass (stems, leaf, sheaths, ear bracts), node number and plant height (S2 and S3 Tables).

## RNAseq experiment

Plants were sampled for gene expression 50 or 60 days after germination by removing the first visible leaf on the plant and placing it immediately in liquid nitrogen. For the first year, teosintes were collected after 60 days. During the second grow-out, maizes were starting to flower after 50 days in both conditions and were therefore collected 10 days earlier. Samples were stored at -80°C until they were shipped overnight on dry ice to UC Davis and kept at -80°C until extraction. One teosinte plant of population 4 (pop4.B.1) didn't grow in the 400ppm chamber and was not collected for RNA extraction. Leaf tissue was ground in liquid nitrogen, and total RNA was isolated with the RNeasy mini Kit (Qiagen) following the manufacturer's protocol. RNA quality and concentration were verified using a Bioanalyzer (Agilent RNA Nano). Total mRNA was extracted twice with Dynabeads oligo(dt)25 (Ambion) from 2µg of total RNA. We prepared libraries as previously described [43], with minor modifications and without the strand specificity. Samples were multiplexed and sequenced in two lanes of an Illumina HiSeq 2500 at the UC Davis Genome Center sequencing facility, resulting in 50 bp single-end reads with an insert size of approximately 300 bases. After demultiplexing, 3.8–20 million reads were generated for each sample (S4 Table). The raw sequence data has been deposited in NCBI Sequence Read Archive with the BioProject ID PRJNA391707 (<https://www.ncbi.nlm.nih.gov/bioproject/PRJNA391707>).

Low quality bases (base quality < 33) were trimmed using FASTX-Toolkit 0.0.13 ([http://hannonlab.cshl.edu/fastx\\_toolkit/](http://hannonlab.cshl.edu/fastx_toolkit/)) and adapters were subsequently removed using fastq-mcf version 1.04 (<https://code.google.com/archive/p/ea-utils/wikis/FastqMcf.wiki>). Trimmed reads were mapped to the AGPv3.22 version of the maize genome using Gmap/Gsnap version 2014-05-15 with command line parameters of `-m 10 -i 2 -N 1 -w 10000 -A sam -t 8 -n 3` [44]. Read counting was performed with bioLite GenomicAlignments [45] (S1 File, Maize\_readcounts and Teosinte\_readcounts); only reads with mapping quality 25 or higher were included in subsequent analyses. Differential gene expression was performed with DEseq2 1.10.1 [46] using a linear model (~ genotype + condition) accounting for both environment (EH and MA) and population of origin. The models were run separately for maize and teosinte. In both cases, we included multiple plants per population/genotype. Individual plants from each maize inbred line were treated as biological replicates. Teosinte, however, is an outbred and each plant was thus included separately but population was used as a covariate. The model is then constructed on n individuals, p genotype or population levels and 2 environmental levels, with the effect size of environment being the measured effect. We used a false discovery rate (FDR) cutoff of 0.05 for determining differentially expressed genes (S1 File, Maize\_DE and Teosinte\_DE). We use intra-chamber variation as experimental error, so the statistical significances

reported here are over-estimates. To mitigate these effects, we also applied a more stringent FDR cutoff of 0.01. Our results remained qualitatively identical suggesting that effects of such pseudo-replication would have to be substantial to impact our general conclusions. We removed 15 genes (5 from maize, 7 from teosinte, and 3 from both, list available in [S1 File](#)) identified as showing differential expression before and after flowering [47] to account for the difference of developmental stage between the two subspecies.

## Co-expression networks

Co-expression analysis was conducted using the program WGCNA [48]. Raw expression counts were normalized using the variance stabilizing transformation in DESeq2 [46]. Genes that were not expressed in both maize and teosinte across both environmental treatments were filtered from the dataset, leaving 29,611 genes. Co-expression networks were created for maize and teosinte individually based on expression values in the EH treatment. Pearson correlation values of expression were first assigned to all pairs of genes and then used to create adjacency matrices by raising the correlation value to a soft power as determined by the data and unique to each network (24 and 10, for maize and teosinte, respectively). Topological overlap matrices were then formed from the adjacency matrices. The adjacency matrix indicates the connection strength between two genes (edge weights within the network), while the topological overlap matrix indicates the degree of connectivity between two genes based on their interactions with other genes in the network as well as with each other. Topological overlap matrices were used to create dissimilarity measures, which were then used to construct modules based on average linkage hierarchical clustering and the dynamic tree cut method [49]. Modules with similar eigengenes were merged using a cut-off of 0.25, meaning modules with an overall similarity of 0.75 were merged. To compare modules between EH and MA environments, a module preservation analysis was performed [50] using EH as the reference and MA as the test for both maize and teosinte modules. Gene ontologies for each module in the maize and teosinte networks were calculated using AgriGo (<https://bioinfo.cau.edu.cn/agriGO/>). The top hub genes were identified for each module [51] and visualized within the module using VisANT [52].

## Enrichment analyses

We performed Gene ontology (GO) term enrichment analyses in AgriGo (<https://bioinfo.cau.edu.cn/agriGO/>), using a customized reference consisting of the genes expressed in leaf tissue according to our expression data in *parviglumis* or *mays*, depending on which subspecies was used for the enrichment analysis. GO terms of all differentially expressed genes were functionally classified into three major GO categories: molecular function (MF), biological process (BP) and cellular component (CC). Genes without GO terms were removed from the analysis. We identified significantly enriched GO terms using a Fisher's exact test and a p-value cut-off of  $\leq 0.05$  after applying the Yekutieli FDR correction. To test for enrichment between different categories of genes, we conducted Monte Carlo re-sampling, comparing the overlap of a particular category (e.g. teosinte-specific differentially expressed genes) with 10,000 equal-sized sets of randomly sampled genes expressed in leaf tissue ([S1 File](#)).

## Additional data sets

We re-analyzed the data of Lemmon *et al.* [19], following their methods to identify candidate genes for differential expression between maize and teosinte. For categories included in the published data (Cis only, Cis + Trans), our reanalysis identified identical gene lists. In addition to these, we followed their filtering protocol to identify a list of top candidates in Trans only and Cis x Trans regulated genes. Because these data come from leaves at a different

developmental stage from ours, we also ran analyses using ear and stem tissue from the same data to assess the robustness of our conclusions.

We used expression data from Hirsch and coauthors [53] to calculate the coefficient of variation of expression of 48,136 genes over 503 modern inbred lines of maize to compare them to our sets of genes. Finally, we included analysis of nucleotide diversity of genes in maize and teosinte, taken from Hufford *et al.* [17] and downloaded from [https://figshare.com/articles/Gene\\_Popgen\\_Stats\\_from\\_Hufford\\_et\\_al\\_2012\\_Nat\\_Gen\\_/746968](https://figshare.com/articles/Gene_Popgen_Stats_from_Hufford_et_al_2012_Nat_Gen_/746968).

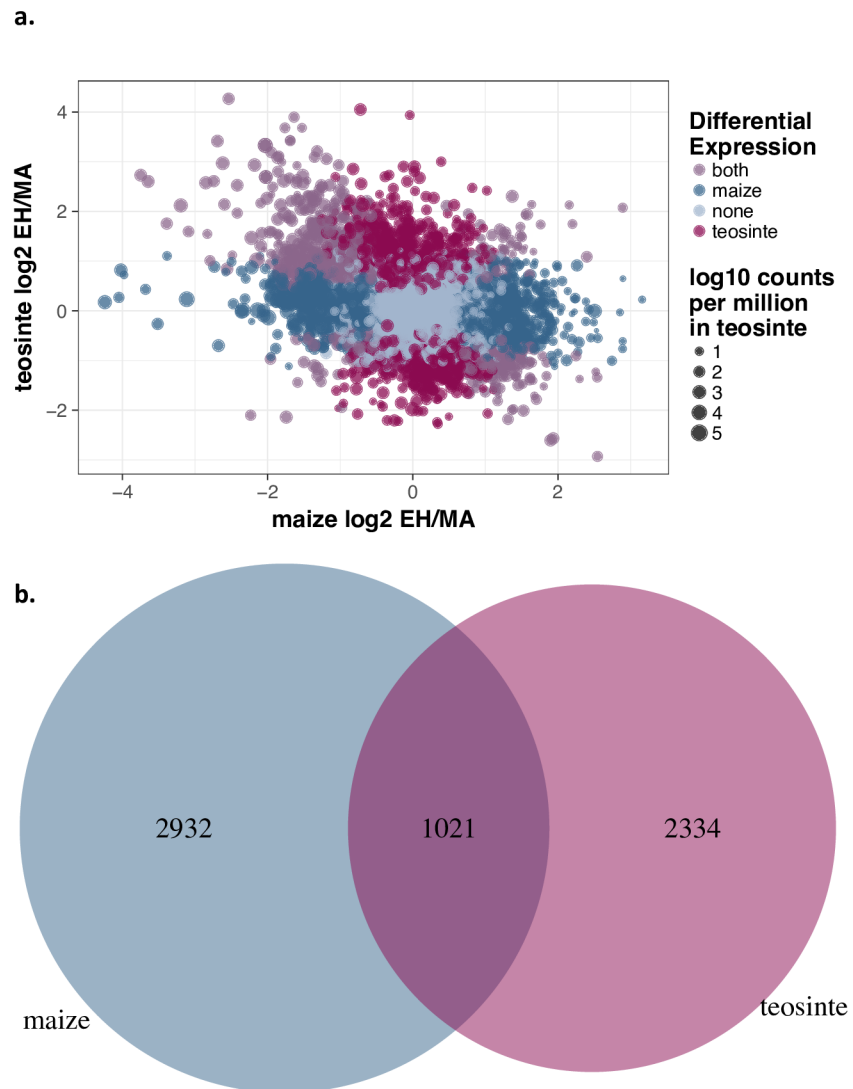
## Results

We grew four accessions of teosinte (*parviglumis*) and four inbred lines of domesticated maize in controlled environmental chambers simulating temperature and CO<sub>2</sub> conditions reflecting Early Holocene (EH) or Modern Ambient (MA) conditions. The largest difference in average temperature and average concentration of CO<sub>2</sub> within environmental treatments was 0.1 °C and 3 ppmv respectively (see [Methods](#)). Many of the teosinte, particularly in the MA, had not developed inflorescences or complete branches at the time of harvest, preventing direct comparison of inflorescence sexuality. Other phenotypic characteristics we observed were nonetheless consistent with our previous experiments under these conditions [26], with teosinte plants grown in EH conditions exhibiting smaller stature and fewer axillary nodes—indicating fewer branches—than their counterparts grown in MA ([S2 Table](#) and [S1 Fig](#)). Maize grown in EH conditions was also smaller and less fecund than plants in MA conditions, but in contrast to teosinte grown in previous experiments [26] we observed no variation in branching, inflorescence sexuality, or cob development, further indicating these traits are invariant in domesticated maize ([S3 Table](#) and [S1 Fig](#)).

To assess differences in gene expression plasticity between teosinte and maize, we sampled leaf tissue from 39 plants and extracted and sequenced total mRNA (see [Methods](#)). On average we sampled 10 million reads per individual ([S4 Table](#)) and identified a total of 34,341 and 35,390 expressed genes in teosinte and maize, respectively, representing 87–90% of genes in the reference transcriptome. Analysis of differentially expressed (DE) genes under EH and MA conditions identified 3,953 and 3,355 DE genes in maize and teosinte at a false discovery rate (FDR) of 0.05 ([Fig 1a](#); [S1 File](#) [Maize\\_DE](#) and [Teosinte\\_DE](#)). Many genes were differentially expressed in both taxa, and the observed 1,021 shared genes ([Fig 1b](#)) is significantly more than expected under a simple model of independence (p-value < 1e-04).

Co-expression analysis (see [Methods](#)) identified a total of 35 and 52 gene modules in maize and teosinte, respectively. Module preservation analysis indicated that gene networks were much more highly conserved between MA and EH conditions in maize than in teosinte: while only 3% of modules showed no preservation in maize, over 35% were significantly changed in teosinte, indicating a much more labile co-expression response of teosinte to environment ([Fig 2](#)).

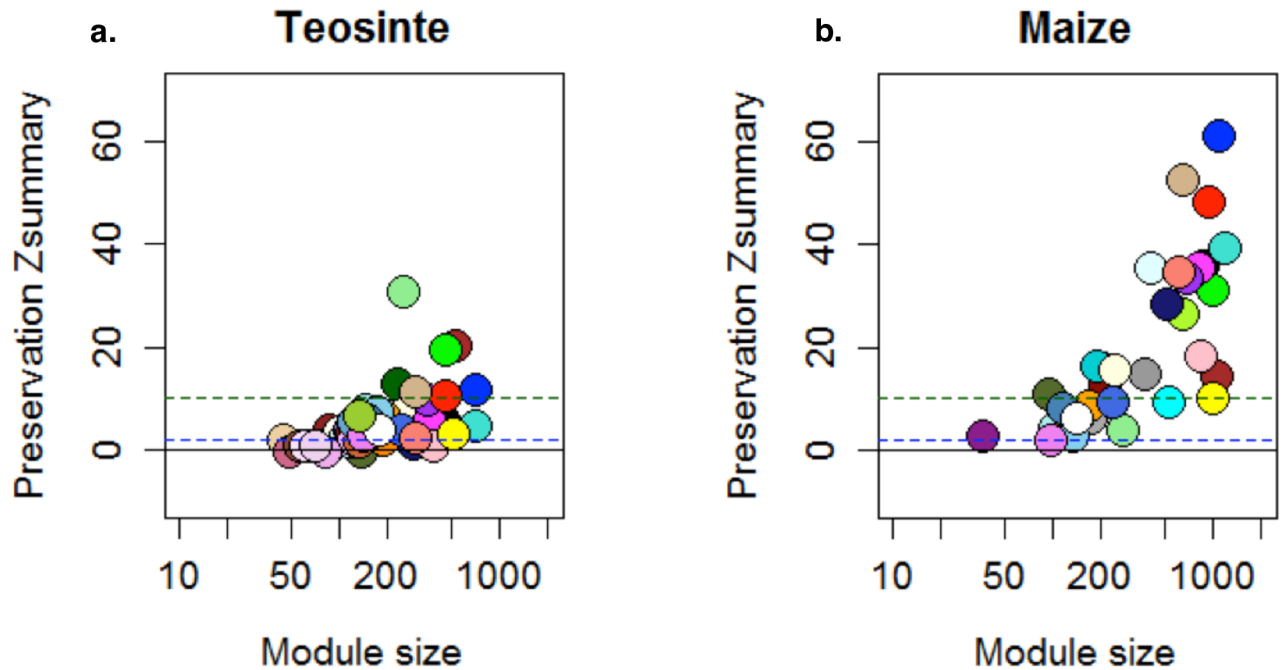
We then investigated the role of selection during domestication in shaping the observed differences in expression across environments and between teosinte and maize by taking advantage of a number of published datasets. We first reanalyzed allele-specific expression data from Lemmon *et al.* [19] to generate lists of candidate genes with regulatory divergence between maize and teosinte in leaf tissue (see [Methods](#)). We identified sets of genes differentially expressed in only one of the two taxa; we call these sets maize-specific and teosinte-specific DE genes. Both maize- and teosinte-specific DE gene sets were enriched for genes showing *cis*—but not *trans*—differences in expression between maize and teosinte ([Fig 3](#)). Genes differentially expressed in both maize and teosinte but in opposite directions were also similarly enriched in *cis* (p-value 0.029) but not *trans* (p-value 0.501), while shared DE genes showing similar direction in maize and teosinte were not enriched in any category.



**Fig 1. Differential expression in maize and teosinte under EH and MA conditions.** (a.) Categories of genes are shown in color (maize-specific DE genes in blue, teosinte-specific DE genes in red, shared DE genes in purple and non-DE genes in gray), and point size represents the log mean counts per million in teosinte. (b.) Venn diagram of the overlap (purple), among DE genes of maize (blue) and teosinte (red) when exposed to the EH environment.

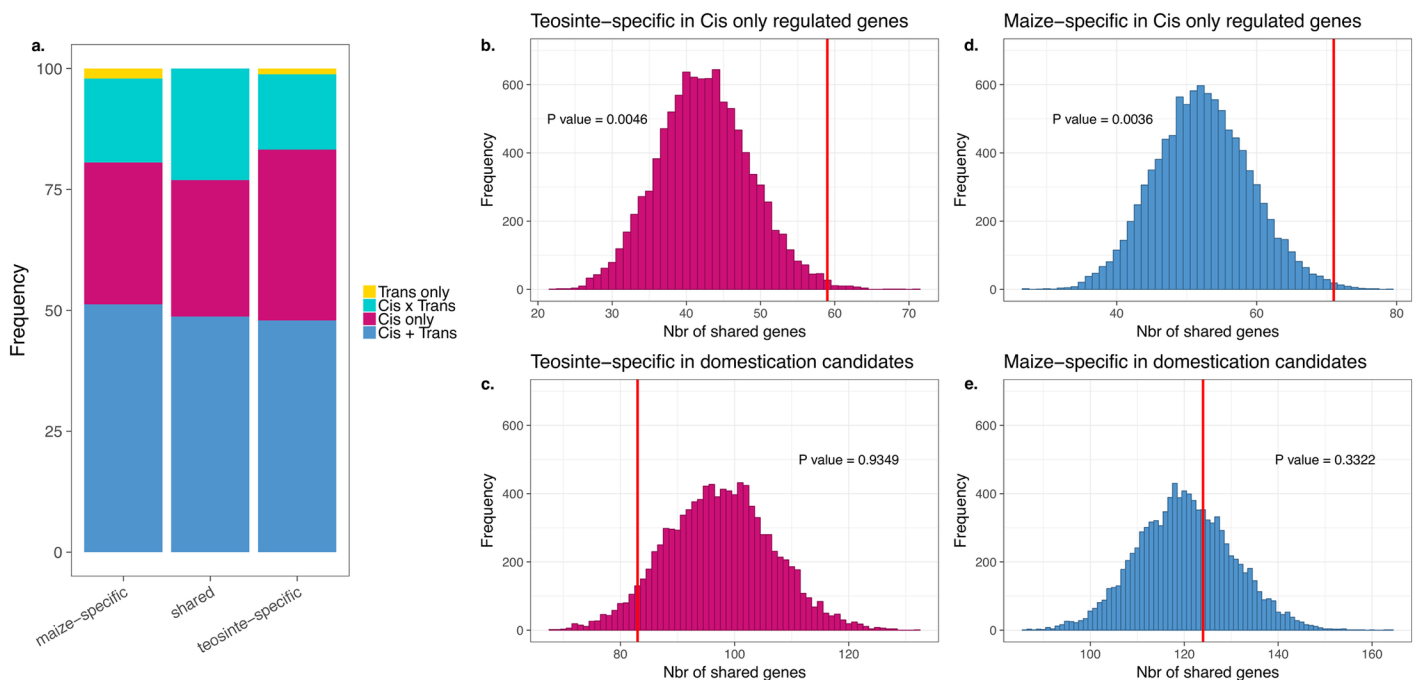
<https://doi.org/10.1371/journal.pone.0184202.g001>

We next compared our set of taxon-specific DE genes (maize or teosinte -specific) to those showing evidence of selection during domestication [17], but found no evidence of enrichment for candidate loci (p-value >0.05 in all cases; Fig 3), and maize genes exhibit similar patterns of lower nucleotide diversity when compared to teosinte across both DE and non-DE genes (S3 Fig), consistent with overall patterns expected due to the demographic impacts of a domestication bottleneck [17]. Results were similar when using data from ear or stem tissue as well, with the exception that teosinte-specific DE genes in our data also became enriched for *trans* differences when compared to expression from ear and stem tissues (p-value 0.0098 and 0.0135 for ear and stem, respectively). Finally, we asked whether taxon-specific DE genes show different patterns of variation in expression among modern maize lines. We find that both maize- and teosinte- specific genes show reduced variation in expression across a panel of



**Fig 2. Module preservation in co-expression analysis.** WGCNA preservation scores for teosinte (a.) and maize (b.) modules across early Holocene and modern ambient environmental conditions. Modules with scores below 2 (blue dashed line) have no preservation across conditions, those between 2 and 10 (green dashed line) are moderately preserved, and those above 10 are highly preserved.

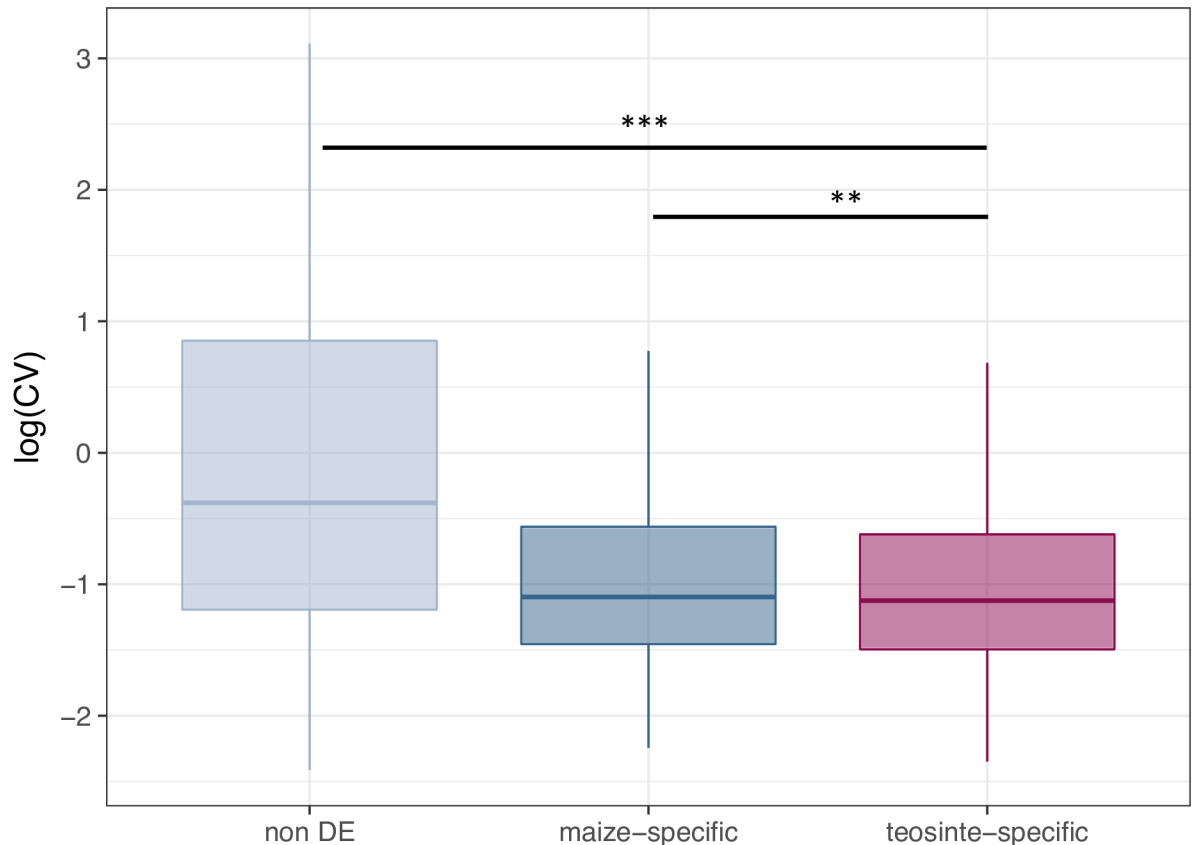
<https://doi.org/10.1371/journal.pone.0184202.g002>



**Fig 3. Overlap with domestication candidate genes.** (a) Patterns of expression shown as a proportion of genes differentially expressed between EH and MA conditions that are also differentially expressed between maize and teosinte. Monte Carlo re-sampling of DE genes in teosinte (b, c) and maize (d, e) for enrichment in genes showing *cis*-regulated differential expression between maize and teosinte (b, d) or evidence of selection during domestication (c, e). Maize and teosinte differential expression data are from Lemmon *et al.* [19], and selected gene lists are from Hufford *et al.* [17].

<https://doi.org/10.1371/journal.pone.0184202.g003>





**Fig 4. Box plot of the coefficient of variation.** Genes not differentially expressed are shown in gray, maize-specific DE genes in blue, and teosinte-specific DE genes in red. The significance of the Mann-Whitney U test is as shown with \*\*<math><0.01</math>, \*\*\*<math><0.001</math>.

<https://doi.org/10.1371/journal.pone.0184202.g004>

more than 500 inbred lines [53], and teosinte-specific DE genes showed a small but statistically significant decrease in variation beyond that seen in maize-specific genes. (Fig 4).

We conducted GO enrichment analysis of both shared and taxon-specific DE genes (S1 File). DE genes shared between maize and teosinte are enriched in categories involved in photosynthesis, nitrogen and sugar synthesis, as well as response to stress, starvation or low phosphate conditions. Those unique to maize were mostly enriched in categories involved in photosynthesis, and these genes predominantly showed decreased expression in EH conditions; genes unique to maize also showed enrichment for biosynthesis categories. DE genes specific to teosinte were enriched for biological processes involving biosynthesis and metabolic pathways of numerous molecules including small molecules, amines, alcohols, sugars, amino acids, organic acids, and polyols. Of the few modules with co-expression showing changes in co-expression patterns across environmental conditions in maize, one module showed enrichment for ontology classes related to membrane-bounded organelles. In contrast, modules changing co-expression in teosinte were enriched for diversity of ontology classes including phosphorus metabolism, protein kinase activity, organic and carboxylic acid biosynthesis, intracellular transport and localization, and amino acid ligase activity.

## Discussion

Phenotypic plasticity is a subject of growing importance in evolutionary biology [32–35] and recent research has shown that gene expression is key to understanding both plastic and

adaptive responses of plants to varying environmental conditions (e.g., [54–56]). Several studies have shown that selection on segregating genetic variation for environmentally-induced gene expression can decrease plasticity and result in constitutive expression and even the evolution of novel traits [27, 28, 33]. This process of genetic assimilation has now been detailed in multiple taxa [39–41] including in response to increased CO<sub>2</sub> [57].

In this study we sought to evaluate the role of genetic plasticity in the evolution of maize during its domestication by growing both maize and its wild ancestor teosinte in environmental conditions reflecting both modern and ancient climates. Previous experiments had demonstrated dramatic phenotypic changes in teosinte when grown under ancient conditions, and our experiment found that nearly 10% of genes expressed in leaves are differentially expressed when grown in low temperature and CO<sub>2</sub> conditions reminiscent of the Early Holocene. A similar proportion of genes were also differentially expressed in maize, and the majority showed similar direction of change (Fig 1). Nonetheless, we saw much less change in overall modules of gene co-expression (Fig 2) and comparatively little change in plant morphology (S3 Table and S1 Fig).

Gene Ontology terms associated with shared and maize-specific DE genes reveal involvement in photosynthesis and are primarily down-regulated in the EH environment. Combined with GO-enrichment for stress-related genes across all candidates, these results suggest that decreases in temperature and CO<sub>2</sub> were likely stressful for both maize and teosinte, and we speculate that the stress associated with ongoing rapid climate change [58] may lead to similarly significant changes in gene expression.

While many DE genes were shared between maize and teosinte, from the perspective of domestication those showing teosinte-specific expression are of most interest, as such genes are variable in the wild ancestor but appear canalized in domesticated maize. If genetic assimilation—selection on genetic changes that canalize a plastic response such as gene expression—played a predominant role genome-wide, we might expect to see the set of teosinte-specific DE genes enriched for genes previously identified as differentially regulated between maize and teosinte [19]. While both maize- and teosinte- specific DE genes are enriched for genes showing cis-regulatory expression differences between maize and teosinte, this result is perhaps not surprising because taxon-specific DE genes were identified as genes with variable expression in one taxon and not the other. We thus expect *a priori* that these sets may have different cis-regulatory elements (and thus different response to experimental treatment) in maize and teosinte. For GA to play a genome-wide role in domestication, we also expect genes showing evidence of canalization in maize (teosinte-specific DE genes) to show population genetic evidence of selection. Instead, we find no enrichment for genes showing evidence of selection from genome scans [17] (Fig 3), and find that both maize- and teosinte-specific genes show decreased nucleotide diversity in maize (S3 Fig), likely the result of genetic drift during the maize domestication bottleneck. While the existing evidence does not support a genome-wide impact of genetic assimilation, there are a number of reasons we might not observe such a pattern, including maladaptive plasticity [59], selection on standing genetic variation [60], and inbreeding during the development of modern maize lines.

Although GA may not have played a role genome-wide, our data hint at the possibility such a process may have been important for subsets of genes. For example, 83 teosinte-specific DE genes do show evidence of selection during domestication, and 6 of these have also been previously identified with a fixed regulatory difference between maize and teosinte (S1 File *Teosinte\_specific\_in\_domestication.xls*). Moreover, a number of the differentially expressed genes we observed not identified as domestication candidates have previously been linked to morphological changes similar to those important for domestication—sometimes paralleling differences between maize and teosinte—and that were previously observed in our growth chamber

experiments [26, 61–66]. These genes include various auxins; Brassinosteroids; a TCP transcription factor; gibberellin, abscisic acid (ABA), and cytokinin regulators; and genes implied in carbon and nitrogen fixation. Phenotypic attributes they may influence include vegetative architecture, inflorescence sexuality, plant height and biomass [e.g., [26, 61–66]]. A relationship between sub-optimal conditions and plasticity in teosinte is in fact well known: poor growing conditions (shade, poor soils, crowding) induce plastic phenotypic response in teosinte that include suppression of branch elongation during growth [8, 9, 67], resulting in plants with maize attributes in vegetative and inflorescence traits similar to those seen here and in previous experiments. This suggests that these and other DE genes identified here may also lead to increased understanding of the maize domestication process by further informing the molecular basis of plasticity, phenotypic changes, and adaptation in past environments. Some genes were DE only in teosinte, suggesting genetic assimilation may have occurred. They include the following auxin and auxin response genes: *SAUR 33* (GRMZM2G460861), auxin efflux carrier *PIN 5a* (GRMZM2G025742), *AUX\_IAA* (GRMZM2G057067) and a *PAR* (GRMZM2G423863). Also with evidence of assimilation were *TCP* (TEOSINTE-BRANCHED1/CYCLOIDEA/PCF) transcription factor 44 (GRMZM2G089361), *ZOG 3* (GRMZM2G338465), gibberellin and ABA regulators GRMZM2G301932 and GGRMZM2G150363, nitrate reductase *NADH 1* (GRMZM2G568636) and *ferredoxin 1* (GRMZM2G043162).

## Conclusion

Our experimental analysis of transcriptome change has identified a large number of genes showing differential expression in maize and teosinte when grown in environments reminiscent of the Early Holocene, the time period of maize domestication. We find greater changes in teosinte morphology and gene networks, and more than 2,000 genes showing differential expression only in teosinte, suggesting substantial loss of plasticity associated with maize domestication. To our knowledge, this is the first set of transcriptomic data showing evidence of a loss of plasticity linked to domestication. Though we find little evidence to support a genome-wide role of selection and genetic assimilation in patterning this loss of plasticity, we nevertheless identify a number of genes that show evidence of genetic assimilation including some linked to morphological changes related to domestication. Future studies should expand on the work presented here by investigating additional environments (including modeled future climates) and providing more detailed, functional analysis of genes showing environmentally-induced plastic changes that may play important roles in patterning phenotypic variation in maize and teosinte.

## Supporting information

**S1 Table. Sources of the teosinte and maize seeds.**

(PDF)

**S2 Table. Teosinte phenotypes in 2013 experiment.**

(PDF)

**S3 Table. Maize phenotypes in 2014 experiment.**

(PDF)

**S4 Table. Number of reads per sample.** Plants from a maternal source with a maize-like phenotype in a previous experiment are marked.

(PDF)

**S1 Fig. Examples of phenotypic differences in EH chamber on the top and MA chamber on the bottom for teosinte ((a.) and (b.) from Piperno and coauthors [26]) and maize (c.).** The

teosinte plant in the EH chamber is a maize-like phenotype in vegetative architecture, inflorescence sexuality, and seed maturation, as described in the main text. The plant in the MA chamber is typical of teosinte today in those characteristics. These traits are unaltered for the maize plant between the EH chamber on the left and the MA chamber on the right.

(PDF)

**S2 Fig. Principal component analysis (PCA) using rlog-normalized of the expression data for the principal components 1 (PC1) and PC2, for teosinte (a.) and maize (b.).**

(PDF)

**S3 Fig. Nucleotide diversity calculated for modern maize inbred lines and teosintes for the non-DE genes in gray, maize-specific genes in blue and the teosinte-specific DE genes in red.** Mann-Whitney U tests for all comparisons are significant (\*\*P < 0.01).

(PDF)

**S1 File. Supplemental data files.** Flowering\_genes.csv, Go\_terms.xls, Maize\_DE.csv, Maize\_readcounts.csv, Teosinte\_DE.csv, Teosinte\_readcounts.csv and Teosinte\_specific\_in\_domestication.xls.

(ZIP)

## Acknowledgments

The authors wish to acknowledge funding support from the US National Science Foundation (IOS-0922703 and IOS-1238014), USDA (Hatch project CA-D-PLS-2066-H) and the Smithsonian Institution. We would like to acknowledge Milton Garcia for his technical assistance. We would also like to thank members of the Ross-Ibarra lab for comments on earlier drafts of the manuscript.

## Author Contributions

**Conceptualization:** Matthew B. Hufford, Dolores Piperno, Jeffrey Ross-Ibarra.

**Data curation:** Anne Lorant.

**Formal analysis:** Anne Lorant, Sarah Pedersen.

**Funding acquisition:** Jeffrey Ross-Ibarra.

**Investigation:** Anne Lorant, Irene Holst.

**Project administration:** Jeffrey Ross-Ibarra.

**Resources:** Klaus Winter.

**Supervision:** Dolores Piperno, Jeffrey Ross-Ibarra.

**Writing – original draft:** Anne Lorant, Matthew B. Hufford, Dolores Piperno, Jeffrey Ross-Ibarra.

**Writing – review & editing:** Anne Lorant, Matthew B. Hufford, Dolores Piperno, Jeffrey Ross-Ibarra.

## References

1. Larson Greger, Piperno Dolores R, Allaby Robin G, Purugganan Michael D, Andersson Leif, Arroyo-Kalin Manuel, Barton Loukas, Vigueira Cynthia Climer, Denham Tim, Dobney Keith, Doust Andrew N, Gepts Paul, Gilbert M Thomas P, Gremillion Kristen J, Lucas Leilani, Lukens Lewis, Marshall Fiona B, Olsen Kenneth M, Pires J Chris, Richerson Peter J, de Casas Rafael Rubio, Sanjur Oris I, Thomas

- Mark G, and Fuller Dorian Q. Current perspectives and the future of domestication studies. *Proc Natl Acad Sci U S A*, 111(17):6139–46, Apr 2014. <https://doi.org/10.1073/pnas.1323964111> PMID: [24757054](https://pubmed.ncbi.nlm.nih.gov/24757054/)
2. Piperno D R and Flannery K V. The earliest archaeological maize (*zea mays* L.) from highland Mexico: new accelerator mass spectrometry dates and their implications. *Proc Natl Acad Sci U S A*, 98(4):2101–3, Feb 2001. <https://doi.org/10.1073/pnas.98.4.2101> PMID: [11172082](https://pubmed.ncbi.nlm.nih.gov/11172082/)
  3. Gepts Paul. Biodiversity in agriculture: domestication, evolution, and sustainability. Cambridge University, Press 2012.
  4. Beadle George W. Mystery of Maize. *Field Museum Natural History Bulletin*, 1972.
  5. Matsuoka Yoshihiro, Vigouroux Yves, Goodman Major M, G Jesus Sanchez, Buckler Edward, and Doebley John. A single domestication for maize shown by multilocus microsatellite genotyping. *Proc Natl Acad Sci U S A*, 99(9):6080–4, Apr 2002. <https://doi.org/10.1073/pnas.052125199> PMID: [11983901](https://pubmed.ncbi.nlm.nih.gov/11983901/)
  6. Doebley John. The genetics of maize evolution. *Annu Rev Genet*, 38:37–59, 2004. <https://doi.org/10.1146/annurev.genet.38.072902.092425> PMID: [15568971](https://pubmed.ncbi.nlm.nih.gov/15568971/)
  7. Briggs William H, McMullen Michael D, Gaut Brandon S, and Doebley John. Linkage mapping of domestication loci in a large maize teosinte backcross resource. *Genetics*, 177(3):1915–28, Nov 2007. <https://doi.org/10.1534/genetics.107.076497> PMID: [17947434](https://pubmed.ncbi.nlm.nih.gov/17947434/)
  8. Doebley J, Stec A, and Gustus C. teosinte branched1 and the origin of maize: evidence for epistasis and the evolution of dominance. *Genetics*, 141(1):333–46, Sep 1995. PMID: [8536981](https://pubmed.ncbi.nlm.nih.gov/8536981/)
  9. Hubbard Lauren, McSteen Paula, Doebley John, and Hake Sarah. Expression patterns and mutant phenotype of teosinte branched1 correlate with growth suppression in maize and teosinte. *Genetics*, 162(4):1927–35, Dec 2002. PMID: [12524360](https://pubmed.ncbi.nlm.nih.gov/12524360/)
  10. Studer Anthony, Zhao Qiong, Ross-Ibarra Jeffrey, and Doebley John. Identification of a functional transposon insertion in the maize domestication gene *tb1*. *Nat Genet*, 43(11):1160–3, Nov 2011. <https://doi.org/10.1038/ng.942> PMID: [21946354](https://pubmed.ncbi.nlm.nih.gov/21946354/)
  11. Doebley J, Stec A, and Hubbard L. The evolution of apical dominance in maize. *Nature*, 386(6624):485–8, Apr 1997. <https://doi.org/10.1038/386485a0> PMID: [9087405](https://pubmed.ncbi.nlm.nih.gov/9087405/)
  12. Wang Huai, Nussbaum-Wagler Tina, Li Bailin, Zhao Qiong, Vigouroux Yves, Faller Marianna, Bomblies Kirsten, Lukens Lewis, and Doebley John F. The origin of the naked grains of maize. *Nature*, 436(7051):714–9, Aug 2005. <https://doi.org/10.1038/nature03863> PMID: [16079849](https://pubmed.ncbi.nlm.nih.gov/16079849/)
  13. Vollbrecht Erik, Springer Patricia S, Goh Lindee, Buckler Edward S 4th, and Martienssen Robert. Architecture of floral branch systems in maize and related grasses. *Nature*, 436(7054):1119–26, Aug 2005. <https://doi.org/10.1038/nature03892> PMID: [16041362](https://pubmed.ncbi.nlm.nih.gov/16041362/)
  14. Wills David M, Whipple Clinton J, Takuno Shohei, Kursel Lisa E, Shannon Laura M, Ross-Ibarra Jeffrey, and Doebley John F. From many, one: genetic control of prolificacy during maize domestication. *PLoS Genet*, 9(6):e1003604, Jun 2013. <https://doi.org/10.1371/journal.pgen.1003604> PMID: [23825971](https://pubmed.ncbi.nlm.nih.gov/23825971/)
  15. Bomblies Kirsten and Doebley John F. Pleiotropic effects of the duplicate maize *floricaula/leafy* genes *zfl1* and *zfl2* on traits under selection during maize domestication. *Genetics*, 172(1):519–31, Jan 2006. <https://doi.org/10.1534/genetics.105.048595> PMID: [16204211](https://pubmed.ncbi.nlm.nih.gov/16204211/)
  16. Wright Stephen I, Bi Irie Vroh, Schroeder Steve G, Yamasaki Masanori, Doebley John F, McMullen Michael D, and Gaut Brandon S. The effects of artificial selection on the maize genome. *Science*, 308(5726):1310–4, May 2005. <https://doi.org/10.1126/science.1107891> PMID: [15919994](https://pubmed.ncbi.nlm.nih.gov/15919994/)
  17. Hufford Matthew B, Xu Xun, Heerwaarden Joost van, Pyhäjärvi Tanja, Chia Jer-Ming, Cartwright Reed A, Elshire Robert J, Glaubitz Jeffrey C, Guill Kate E, Kaeppeler Shawn M, Lai Jinsheng, Morrell Peter L, Shannon Laura M, Song Chi, Springer Nathan M, Swanson-Wagner Ruth A, Tiffin Peter, Wang Jun, Zhang Gengyun, Doebley John, McMullen Michael D, Ware Doreen, Buckler Edward S, Yang Shuang, and Ross-Ibarra Jeffrey. Comparative population genomics of maize domestication and improvement. *Nat Genet*, 44(7):808–11, Jul 2012. <https://doi.org/10.1038/ng.2309> PMID: [22660546](https://pubmed.ncbi.nlm.nih.gov/22660546/)
  18. Swanson-Wagner Ruth, Briskine Roman, Schaefer Robert, Hufford Matthew B, Ross-Ibarra Jeffrey, Myers Chad L, Tiffin Peter, and Springer Nathan M. Reshaping of the maize transcriptome by domestication. *Proc Natl Acad Sci U S A*, 109(29):11878–83, Jul 2012. <https://doi.org/10.1073/pnas.1201961109> PMID: [22753482](https://pubmed.ncbi.nlm.nih.gov/22753482/)
  19. Lemmon Zachary H, Bukowski Robert, Sun Qi, and Doebley John F. The role of cis regulatory evolution in maize domestication. *PLoS Genet*, 10(11):e1004745, Nov 2014. <https://doi.org/10.1371/journal.pgen.1004745> PMID: [25375861](https://pubmed.ncbi.nlm.nih.gov/25375861/)
  20. Piperno Dolores R. The origins of plant cultivation and domestication in the new world tropics. *Current Anthropology*, 52(S4):S453–S470, 2011. <https://doi.org/10.1086/659998>

21. Ahn Jinho, Wahlen Martin, Deck Bruce L, Brook Ed J, Mayewski Paul A, Taylor Kendrick C, and White James WC. A record of atmospheric CO<sub>2</sub> during the last 40,000 years from the Siple Dome, Antarctica ice core. *Journal of Geophysical Research: Atmospheres*, 109(D13), 2004. <https://doi.org/10.1029/2003JD004415>
22. Piperno Dolores R, Moreno J Enrique, Iriarte José, Holst Irene, Lachniet Matthew, Jones John G, Ranere Anthony J, and Castanzo Ronald. Late Pleistocene and Holocene environmental history of the Iguuala Valley, central Balsas watershed of Mexico. *Proceedings of the National Academy of Sciences*, 104(29):11874–11881, 2007. <https://doi.org/10.1073/pnas.0703442104>
23. Hodell David A, Anselmetti Flavio S, Ariztegui Daniel, Brenner Mark, Curtis Jason H, Gilli Adrian, Grzesik Dustin A, Guilderson Thomas J, Müller Andreas D, Bush Mark B, et al. An 85-ka record of climate change in lowland Central America. *Quaternary Science Reviews*, 27(11):1152–1165, 2008. <https://doi.org/10.1016/j.quascirev.2008.02.008>
24. Bush Mark B, Correa-Metrio Alexander Y, Hodell David A, Brenner Mark, Anselmetti Flavio S, Ariztegui Daniel, Müller Andreas D, Curtis Jason H, Grzesik Dustin A, Burton Catherine, et al. Re-evaluation of climate change in lowland Central America during the last glacial maximum using new sediment cores from Lake Petén Itzá, Guatemala. In *Past Climate Variability in South America and Surrounding Regions*, pages 113–128. Springer, 2009.
25. Restrepo Alejandra, Colinvaux Paul, Bush Mark, Correa-Metrio Alexander, Conroy Jessica, Gardener Mark R, Jaramillo Patricia, Steinitz-Kannan Miriam, and Overpeck Jonathan. Impacts of climate variability and human colonization on the vegetation of the Galápagos Islands. *Ecology*, 93(8):1853–66, Aug 2012. <https://doi.org/10.1890/11-1545.1> PMID: 22928414
26. Piperno Dolores R, Holst Irene, Winter Klaus, and McMillan Owen. Teosinte before domestication: Experimental study of growth and phenotypic variability in late Pleistocene and early Holocene environments. *Quaternary International*, 363:65–77, 2015. <https://doi.org/10.1016/j.quaint.2013.12.049>
27. Gilbert Scott F and Epel David. *Ecological developmental biology: integrating epigenetics, medicine, and evolution*. Sinauer Associates, 2009.
28. Beldade Patrícia, Mateus Ana Rita A, and Keller Roberto A. Evolution and molecular mechanisms of adaptive developmental plasticity. *Mol Ecol*, 20(7):1347–63, Apr 2011. <https://doi.org/10.1111/j.1365-294X.2011.05016.x> PMID: 21342300
29. Moczek Armin P, Sultan Sonia, Foster Susan, Ledón-Rettig Cris, Dworkin Ian, Nijhout H Fred, Abouheif Ehab, and Pfennig David W. The role of developmental plasticity in evolutionary innovation. *Proc Biol Sci*, 278(1719):2705–13, Sep 2011. <https://doi.org/10.1098/rspb.2011.0971> PMID: 21676977
30. West-Eberhard Mary Jane. *Developmental plasticity and evolution*. Oxford University Press, 2003.
31. Hendry Andrew P. Key questions on the role of phenotypic plasticity in eco-evolutionary dynamics. *J Hered*, 107(1):25–41, Jan 2016. <https://doi.org/10.1093/jhered/esv060> PMID: 26297912
32. Magalhaes I S, Mwaiko S, Schneider M V, and Seehausen O. Divergent selection and phenotypic plasticity during incipient speciation in Lake Victoria cichlid fish. *J Evol Biol*, 22(2):260–74, Feb 2009. <https://doi.org/10.1111/j.1420-9101.2008.01637.x> PMID: 19032503
33. Pfennig David W and McGee Matthew. Resource polyphenism increases species richness: a test of the hypothesis. *Philosophical Transactions of the Royal Society of London B: Biological Sciences*, 365(1540):577–591, 2010. <https://doi.org/10.1098/rstb.2009.0244> PMID: 20083634
34. Ledón-Rettig Cris C, Pfennig David W, and Crespi Erica J. Diet and hormonal manipulation reveal cryptic genetic variation: implications for the evolution of novel feeding strategies. *Proc Biol Sci*, 277(1700):3569–78, Dec 2010. <https://doi.org/10.1098/rspb.2010.0877> PMID: 20573627
35. Schneider Ralf F, Li Yuanhao, Meyer Axel, and Gunter Helen M. Regulatory gene networks that shape the development of adaptive phenotypic plasticity in a cichlid fish. *Mol Ecol*, 23(18):4511–26, Sep 2014. <https://doi.org/10.1111/mec.12851> PMID: 25041245
36. Schlichting Carl D and Wund Matthew A. Phenotypic plasticity and epigenetic marking: an assessment of evidence for genetic accommodation. *Evolution*, 68(3):656–72, Mar 2014. <https://doi.org/10.1111/evo.12348> PMID: 24410266
37. Waddington Conrad H. Genetic assimilation of an acquired character. *Evolution*, pages 118–126, 1953. <https://doi.org/10.2307/2405747>
38. Pigliucci Massimo, Murren Courtney J, and Schlichting Carl D. Phenotypic plasticity and evolution by genetic assimilation. *J Exp Biol*, 209(Pt 12):2362–7, Jun 2006. <https://doi.org/10.1242/jeb.02070> PMID: 16731812
39. Kuzawa Christopher W and Bragg Jared M. Plasticity in human life history strategy. *Current Anthropology*, 53(S6):S369–S382, 2012. <https://doi.org/10.1086/667410>

40. Diggle Pamela K and Miller Jill S. Developmental plasticity, genetic assimilation, and the evolutionary diversification of sexual expression in solanum. *Am J Bot*, 100(6):1050–60, Jun 2013. <https://doi.org/10.3732/ajb.1200647> PMID: 23624926
41. Standen Emily M, Du Trina Y, and Larsson Hans C E. Developmental plasticity and the origin of tetrapods. *Nature*, 513(7516):54–8, Sep 2014. <https://doi.org/10.1038/nature13708> PMID: 25162530
42. Hufford Matthew B, Martínez-Meyer Enrique, Gaut Brandon S, Eguiarte Luis E, and Tenailon Maud I. Inferences from the historical distribution of wild and domesticated maize provide ecological and evolutionary insight. *PLoS One*, 7(11):e47659, 2012. <https://doi.org/10.1371/journal.pone.0047659> PMID: 23155371
43. Zhong Silin, Joung Je-Gun, Zheng Yi, Chen Yun-ru, Liu Bao, Shao Ying, Xiang Jenny Z, Fei Zhangjun, and Giovannoni James J. High-throughput illumina strand-specific rna sequencing library preparation. *Cold Spring Harb Protoc*, 2011(8):940–9, Aug 2011. <https://doi.org/10.1101/pdb.prot5652> PMID: 21807852
44. Wu Thomas D, Reeder Jens, Lawrence Michael, Becker Gabe, and Brauer Matthew J. Gmap and gsnap for genomic sequence alignment: Enhancements to speed, accuracy, and functionality. *Methods Mol Biol*, 1418:283–334, 2016. [https://doi.org/10.1007/978-1-4939-3578-9\\_15](https://doi.org/10.1007/978-1-4939-3578-9_15) PMID: 27008021
45. Lawrence Michael, Huber Wolfgang, Pagès Hervé, Aboyoun Patrick, Carlson Marc, Gentleman Robert, Morgan Martin T, and Carey Vincent J. Software for computing and annotating genomic ranges. *PLoS Comput Biol*, 9(8):e1003118, 2013. <https://doi.org/10.1371/journal.pcbi.1003118> PMID: 23950696
46. Love Michael I, Huber Wolfgang, and Anders Simon. Moderated estimation of fold change and dispersion for rna-seq data with deseq2. *Genome Biol*, 15(12):550, 2014. <https://doi.org/10.1186/s13059-014-0550-8> PMID: 25516281
47. Alter Philipp, Bircheneder Susanne, Zhou Liang-Zi, Schlüter Urte, Gahrtz Manfred, Sonnewald Uwe, and Dresselhaus Thomas. Flowering time-regulated genes in maize include the transcription factor zmmads1. *Plant Physiology*, 172(1):389–404, 2016. <https://doi.org/10.1104/pp.16.00285> PMID: 27457125
48. Langfelder Peter and Horvath Steve. Wgcna: an r package for weighted correlation network analysis. *BMC Bioinformatics*, 9:559, 2008. <https://doi.org/10.1186/1471-2105-9-559> PMID: 19114008
49. Langfelder Peter, Zhang Bin, and Horvath Steve. Defining clusters from a hierarchical cluster tree: the dynamic tree cut package for r. *Bioinformatics*, 24(5):719–20, Mar 2008. <https://doi.org/10.1093/bioinformatics/btm563> PMID: 18024473
50. Langfelder Peter, Luo Rui, Oldham Michael C, and Horvath Steve. Is my network module preserved and reproducible? *PLoS Comput Biol*, 7(1):e1001057, 2011. <https://doi.org/10.1371/journal.pcbi.1001057> PMID: 21283776
51. Miller Jeremy A, Horvath Steve, and Geschwind Daniel H. Divergence of human and mouse brain transcriptome highlights alzheimer disease pathways. *Proc Natl Acad Sci U S A*, 107(28):12698–703, Jul 2010. <https://doi.org/10.1073/pnas.0914257107> PMID: 20616000
52. Hu Zhenjun, Mellor Joseph, Wu Jie, and DeLisi Charles. Visant: an online visualization and analysis tool for biological interaction data. *BMC Bioinformatics*, 5:17, Feb 2004. <https://doi.org/10.1186/1471-2105-5-17> PMID: 15028117
53. Hirsch Candice N, Foerster Jillian M, Johnson James M, Sekhon Rajandeep S, Muttoni German, Vailancourt Brieanne, Peñagaricano Francisco, Lindquist Erika, Pedraza Mary Ann, Barry Kerrie, de Leon Natalia, Kaeppler Shawn M, and Buell C Robin. Insights into the maize pan-genome and pan-transcriptome. *Plant Cell*, 26(1):121–35, Jan 2014. <https://doi.org/10.1105/tpc.113.119982> PMID: 24488960
54. Footitt Steven, Huang Ziyue, Clay Heather A, Mead Andrew, and Finch-Savage William E. Temperature, light and nitrate sensing coordinate arabidopsis seed dormancy cycling, resulting in winter and summer annual phenotypes. *The Plant Journal*, 74(6):1003–1015, 2013. <https://doi.org/10.1111/tbj.12186> PMID: 23590427
55. Des Marais David L, Hernandez Kyle M, and Juenger Thomas E. Genotype-by-environment interaction and plasticity: exploring genomic responses of plants to the abiotic environment. *Annual Review of Ecology, Evolution, and Systematics*, 44:5–29, 2013. <https://doi.org/10.1146/annurev-ecolsys-110512-135806>
56. Munné-Bosch Sergi, Queval Guillaume, and Foyer Christine H. The impact of global change factors on redox signaling underpinning stress tolerance. *Plant Physiol*, 161(1):5–19, Jan 2013. <https://doi.org/10.1104/pp.112.205690> PMID: 23151347
57. Walworth Nathan G, Lee Michael D, Fu Fei-Xue, Hutchins David A, and Webb Eric A. Molecular and physiological evidence of genetic assimilation to high co2 in the marine nitrogen fixer trichodesmium. *Proc Natl Acad Sci U S A*, Nov 2016. <https://doi.org/10.1073/pnas.1605202113> PMID: 27830646
58. Bassu Simona, Brisson Nadine, Durand Jean-Louis, Boote Kenneth, Lizaso Jon, Jones James W, Rosenzweig Cynthia, Ruane Alex C, Adam Myriam, Baron Christian, Basso Bruno, Biernath Christian,

- Boogaard Hendrik, Conijn Sjaak, Corbeels Marc, Deryng Delphine, De Sanctis Giacomo, Gayler Sebastian, Grassini Patricio, Hatfield Jerry, Hoek Steven, Izaurrealde Cesar, Jongschaap Raymond, Kemanian Armen R, Kersebaum K Christian, Kim Soo-Hyung, Kumar Naresh S, Makowski David, Müller Christoph, Nendel Claas, Priesack Eckart, Pravia Maria Virginia, Sau Federico, Shcherbak Iurii, Tao Fulu, Teixeira Edmar, Timlin Dennis, and Waha Katharina. How do various maize crop models vary in their responses to climate change factors? *Glob Chang Biol*, 20(7):2301–20, Jul 2014. <https://doi.org/10.1111/gcb.12520> PMID: 24395589
59. Sultan Sonia E, Barton Kasey, and Wilczek Amity M. Contrasting patterns of transgenerational plasticity in ecologically distinct congeners. *Ecology*, 90(7):1831–9, Jul 2009. <https://doi.org/10.1890/08-1064.1> PMID: 19694132
  60. Barrett Rowan D H and Schluter Dolph. Adaptation from standing genetic variation. *Trends Ecol Evol*, 23(1):38–44, Jan 2008. <https://doi.org/10.1016/j.tree.2007.09.008> PMID: 18006185
  61. McSteen Paula. Hormonal regulation of branching in grasses. *Plant Physiol*, 149(1):46–55, Jan 2009. <https://doi.org/10.1104/pp.108.129056> PMID: 19126694
  62. Kebrom Tesfamichael H, Spielmeier Wolfgang, and Finnegan E Jean. Grasses provide new insights into regulation of shoot branching. *Trends Plant Sci*, 18(1):41–8, Jan 2013. <https://doi.org/10.1016/j.tplants.2012.07.001> PMID: 22858267
  63. Gallavotti Andrea. The role of auxin in shaping shoot architecture. *J Exp Bot*, 64(9):2593–608, Jun 2013. <https://doi.org/10.1093/jxb/ert141> PMID: 23709672
  64. Hartwig Thomas, Chuck George S, Fujioka Shozo, Klempien Antje, Weizbauer Renate, Potluri Devi Prasad V, Choe Sunghwa, Johal Gurmukh S, and Schulz Burkhard. Brassinosteroid control of sex determination in maize. *Proc Natl Acad Sci U S A*, 108(49):19814–9, Dec 2011. <https://doi.org/10.1073/pnas.1108359108> PMID: 22106275
  65. Lawit Shai J, Wych Heidi M, Xu Deping, Kundu Suman, and Tomes Dwight T. Maize DELLA proteins dwarf plant8 and dwarf plant9 as modulators of plant development. *Plant Cell Physiol*, 51(11):1854–68, Nov 2010. <https://doi.org/10.1093/pcp/pcq153> PMID: 20937610
  66. Colebrook Ellen H, Thomas Stephen G, Phillips Andrew L, and Hedden Peter. The role of gibberellin signalling in plant responses to abiotic stress. *J Exp Biol*, 217(Pt 1):67–75, Jan 2014. <https://doi.org/10.1242/jeb.089938> PMID: 24353205
  67. Whipple Clinton J, Kebrom Tesfamichael H, Weber Allison L, Yang Fang, Hall Darren, Meeley Robert, Schmidt Robert, Doebley John, Brutnell Thomas P, and Jackson David P. grassy tillers1 promotes apical dominance in maize and responds to shade signals in the grasses. *Proc Natl Acad Sci U S A*, 108(33):E506–12, Aug 2011. <https://doi.org/10.1073/pnas.1102819108> PMID: 21808030