

CORRECTION

Correction: Recessive coding and regulatory mutations in *FBLIM1* underlie the pathogenesis of chronic recurrent multifocal osteomyelitis (CRMO)

Allison J. Cox, Benjamin W. Darbro, Ronald M. Laxer, Gabriel Velez, Xinyu Bing, Alexis L. Finer, Albert Erives, Vinit B. Mahajan, Alexander G. Bassuk, Polly J. Ferguson

Panel C is missing from [Fig 1](#). Please see the correct [Fig 1](#) here.



OPEN ACCESS

Citation: Cox AJ, Darbro BW, Laxer RM, Velez G, Bing X, Finer AL, et al. (2017) Correction: Recessive coding and regulatory mutations in *FBLIM1* underlie the pathogenesis of chronic recurrent multifocal osteomyelitis (CRMO). PLoS ONE 12(7): e0181222. <https://doi.org/10.1371/journal.pone.0181222>

Published: July 7, 2017

Copyright: © 2017 Cox et al. This is an open access article distributed under the terms of the [Creative Commons Attribution License](#), which permits unrestricted use, distribution, and reproduction in any medium, provided the original author and source are credited.

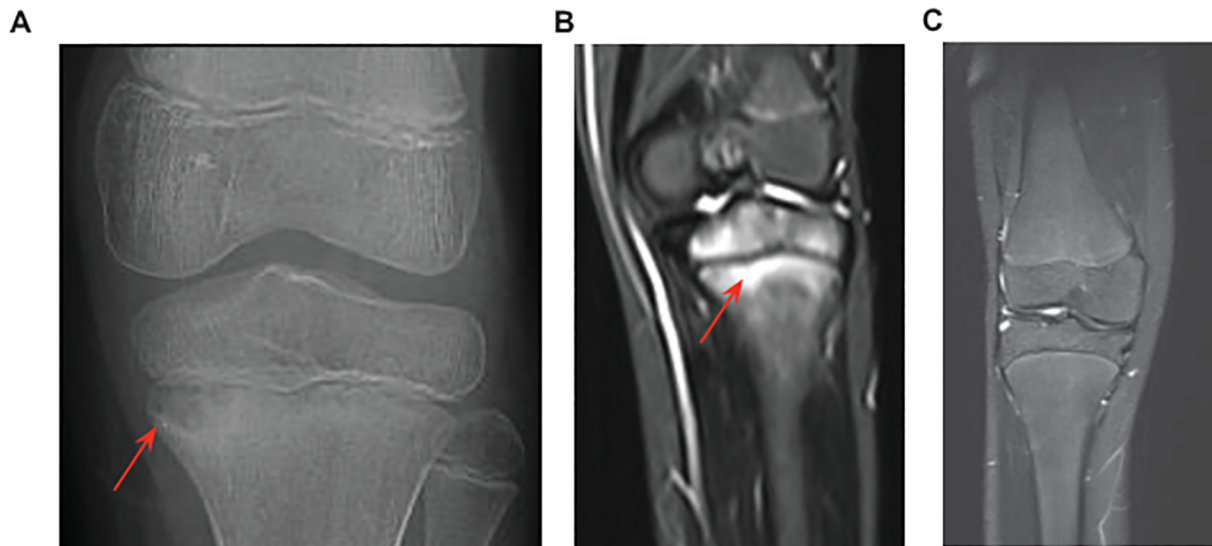


Fig 1. X-ray and MRI knee images from the affected proband. (A) X-ray showing osteomyelitis and a lesion characteristic of CRMO (red arrow) in the left proximal tibia. (B). MRI of the same knee showing inflammation and bone destruction (red arrow). Similar lesions were found in the clavicle, hip, femur, tibia, foot and toes (not shown). (C) MRI of a healthy knee for comparison.

<https://doi.org/10.1371/journal.pone.0181222.g001>

Reference

1. Cox AJ, Darbro BW, Laxer RM, Velez G, Bing X, Finer AL, et al. (2017) Recessive coding and regulatory mutations in *FBLIM1* underlie the pathogenesis of chronic recurrent multifocal osteomyelitis (CRMO). PLoS ONE 12(3): e0169687. <https://doi.org/10.1371/journal.pone.0169687> PMID: 28301468