

RESEARCH ARTICLE

The dynamics of immune responses to *Mycobacterium tuberculosis* during different stages of natural infection: A longitudinal study among Greenlanders

Sascha Wilk Michelsen^{1,2*}, Bolette Soborg¹, Lars Jorge Diaz¹, Soren Tetens Hoff², Else Marie Agger², Anders Koch¹, Ida Rosenkrands², Jan Wohlfahrt¹, Mads Melbye^{1,3,4}

1 Department of Epidemiology Research, Statens Serum Institut, Copenhagen, Denmark, **2** Department of Infectious Disease Immunology, Statens Serum Institut, Copenhagen, Denmark, **3** Department of Clinical Medicine, University of Copenhagen, Copenhagen, Denmark, **4** Department of Medicine, Stanford School of Medicine, Stanford, California, United States of America

* swm@ssi.dk



OPEN ACCESS

Citation: Michelsen SW, Soborg B, Diaz LJ, Hoff ST, Agger EM, Koch A, et al. (2017) The dynamics of immune responses to *Mycobacterium tuberculosis* during different stages of natural infection: A longitudinal study among Greenlanders. PLoS ONE 12(6): e0177906. <https://doi.org/10.1371/journal.pone.0177906>

Editor: Pere-Joan Cardona, Fundació Institut d'Investigació en Ciències de la Salut Germans Trias i Pujol, Universitat Autònoma de Barcelona, SPAIN

Received: December 26, 2016

Accepted: May 4, 2017

Published: June 1, 2017

Copyright: © 2017 Michelsen et al. This is an open access article distributed under the terms of the [Creative Commons Attribution License](https://creativecommons.org/licenses/by/4.0/), which permits unrestricted use, distribution, and reproduction in any medium, provided the original author and source are credited.

Data Availability Statement: Data is not available for public deposition to protect the privacy of the human participants, however data is available on request from Statens Serum Institut for researchers who meet the criteria for access to confidential data. Please contact Statens Serum Institut, Ole Jensen Director, Corporate affairs, ojj@ssi.sk (<http://www.ssi.dk/English/Service/AboutSSI/Organization/Organisationchart/>)

Abstract

Objective

Understanding human immunity to *Mycobacterium tuberculosis* (*Mtb*) during different stages of infection is important for development of an effective tuberculosis (TB) vaccine. We aimed to evaluate immunity to *Mtb* infection by measuring immune responses to selected *Mtb* antigens expressed during different stages of infection over time and to observe sustainability of immunity.

Methods

In a cohort study comprising East Greenlanders aged 17–22 years (2012 to 2014) who had either; undetectable *Mtb* infection, ongoing or prior *Mtb* infection at enrolment, we measured immunity to 15 antigens over a one-year period. Quantiferon-TB Gold testing (QFT) defined *Mtb* infection status (undetected/detected). The eligible study population of East Greenlanders aged 17–22 years was identified from the entire population using the Civil Registration System. From the source population 65 participants were selected by stratified random sampling according to information on *Mtb* infection stage. Retrospective and prospective information on notified TB (including treatment) was obtained through the mandatory TB notification system and was used to characterise *Mtb* infection stage (ongoing/prior). Immunity to 15 antigens including two QFT antigens, PPD and 12 non-QFT antigens (representing early, constitutive and latent *Mtb* infection) was assessed by measuring immune responses using whole-blood antigen stimulation and interferon gamma measurement.

Results

Of 65 participants, 54 were considered *Mtb*-infected. Immunity to *Mtb* infection fluctuated with high annual risk of conversion (range: 6–69%) and reversion (range: 5–95%). During

Department.aspx?id=3dd819d7-31a4-490e-9e41-9db500a5842f). Public deposition of the data was not incorporated into the study's application to and approval from the Commission for Scientific Research in Greenland.

Funding: This work was supported by the following funding sources: The Commission for Scientific Research in Greenland (SWM), <http://ufm.dk/forskning-og-innovation/tilskud-til-forskning-og-innovation/hvem-har-modtaget-tilskud/2012/ph-d-stipendier-stottet-af-kvug-2011>; The Danish research Council (SWM, MM), <http://ufm.dk/en/research-and-innovation/councils-and-commissions/the-danish-council-for-independent-research>; Rosalie Petersen's Foundation (BS), Ebba Celinders Legat (SWM), Aase og Ejnar Danielsens Foundation (SWM), www.danielsensfond.dk; Dagmar Marshalls Foundation (SWM); The 17.12.1981 Foundation (SWM), <http://www.fondenaf17121981.dk/>; Christian X Foundation (SWM), <http://kongehuset.dk/node/5556>; The A.P. Moeller Foundation for the Advancement of Medical Science (SWM), www.apmollerfonde.dk/; The Danish Lung Association (SWM), <https://www.lunge.dk/>; Sundhedspuljen Greenland Self-Government (SWM), <http://naalakkersuisut.gl/da/Naalakkersuisut/Departementer/Sundhed/Forskningsstoette-Sundhedspuljen>; Forskningspuljen Greenland Self-Government (SWM). Else Marie Agger was supported by a grant from the European Commission through the TBVAC2020 consortium contract H2020-PHC-2014-2015-643381. The sponsors played no role in the study design; the collection, analysis or interpretation of data, the writing of the report; or in the decision to submit the manuscript for publication.

Competing interests: The authors have declared that no competing interests exist.

follow-up, five (8%) participants were notified with TB; neither conversion nor reversion was associated with an increased risk of progressing to TB.

Conclusions

Our findings suggest that human immunity to natural *Mtb* infection over time is versatile with fluctuations, resulting in high levels of conversion and reversion of immunity, thus human immunity to *Mtb* is much more dynamic than anticipated. The study findings suggest future use of longitudinal assessment of immune responses when searching for TB vaccine candidate antigens.

Introduction

Tuberculosis (TB) will remain a major global health challenge, with an estimated two billion individuals infected, unless new preventive measures are identified [1,2].

Mtb infection is traditionally classified as either latent *Mtb* infection (LTBI) without clinical symptoms (90%) or as TB with clinical symptoms (10%) [3,4]. Similarly, it is believed that *Mtb* alters its gene expression profile during different stages of infection due to interaction with various human host defence mechanisms, consequently also causing variation in the antigen repertoire exposed to the human immune system [5–9].

Understanding human immunity to *Mtb* infection, including immunity to potential novel TB vaccine antigens, during different stages of infection and sustainability of immunity over time, is considered necessary to develop a novel TB vaccine capable of halting progression from *Mtb* infection to TB [5]. Currently, only a limited number of *Mtb* antigens have been exploited for use in novel TB vaccines [5,6,10,11], with ESAT-6, TB10.4, and Ag85A-B antigens represented in numerous vaccine candidates [12]. Furthermore, little is known about the change in immune response to *Mtb* antigens when infection occurs and before TB disease develops. Hence, there is a continued need for expanding knowledge regarding the clinical relevance of immunity to *Mtb* antigens for future use in vaccine development.

The *Mtb* genes known to be expressed during different stages of infection include: early stage antigens (e.g. Ag85B) found to be highly expressed in the early replicative stage of infection [5,13]; constitutively expressed antigens (e.g. ESAT-6/TB10.4/CFP10) believed to be expressed throughout all stages of infection [14]; and LTBI antigens believed to be expressed predominantly when *Mtb* is quiescent and in a slow or non-replicative stage [5,15]. To our knowledge, no previous studies have evaluated immunity to *Mtb* infection by measuring immune responses to *Mtb* antigens from all stages in the *Mtb* infection cycle and change over time.

Greenland has a high TB incidence and represents a unique setting for *Mtb*-antigen evaluation as it is most likely free of cross-reacting antigens derived from non-tuberculous mycobacteria (NTM), enabling an unbiased evaluation of host immunity [16].

The study aims to evaluate host immunity to *Mtb* infection among individuals in a TB-high-endemic region by measuring immune responses to potential TB vaccine antigens believed to be expressed by the bacterium during different stages of infection, and to observe sustainability of host immunity over time.

Methods

Setting, study design and study population

Greenland is an autonomous part of the Kingdom of Denmark, but governed by the Greenland Self-government. The majority of the population is Inuit (89%) [17]. The population has universal and free access to health care, including free TB treatment. The study was performed in the Eastern part of Greenland in the Tasiilaq region with 3,008 inhabitants (1 January 2013) [17]. The average TB incidence in the study setting was 440/100,000 inhabitants/year from 1982 to 2012 [18]. All live-born children and new residents in Greenland are assigned a unique personal identification number through the Civil Registration System (CRS) [19], allowing individual follow-up through all national registers and providing information on e.g. place and date of birth, sex, place of residence and TB notification. To be categorised as Inuit in the present study, both parents should be registered as being born in Greenland. Neonatal Bacillus Calmette-Guérin (BCG) vaccination has been a part of the Greenlandic childhood vaccination programme since 1955, but was discontinued in 1991 and subsequently re-introduced in 1997 due to nationwide policy changes [18,20]. We assume all individuals born in Greenland from January 1, 1991, to December 31, 1996, to be unvaccinated. The assumption is evaluated elsewhere [18].

This was an explorative cohort study and the study population comprised primarily BCG unvaccinated Greenlanders aged 17–22 years living in Tasiilaq in the years 2012–2013. *A priori*, the size of the study population was set at 65 individuals. Among the eligible population identified through the CRS (N = 206), adequate information on *Mtb* infection and treatment status was obtainable for 181 individuals. QuantiFERON[®]-TB Gold testing (QFT) defined *Mtb* infection status (undetected/detected). The eligible study participants were categorised into four groups: (1) *Mtb* infection undetectable by QFT (N = 94), (2) ongoing *Mtb* infection, non-treated (N = 25), (3) prior *Mtb* infection, treated for notified TB (N = 41), and (4) prior *Mtb* infection, treated with preventive monotherapy (N = 21). Participants were invited randomly within each of the groups, however with oversampling of individuals with *Mtb* infection, and with particular focus on including individuals with ongoing *Mtb* infection, anticipating immune responses to *Mtb* antigens in this group. One week in advance, the participants received a personal letter of invitation, study information, and a consent form. Participants were enrolled in October–November 2012 and April 2013, and followed-up with one or two subsequent assessments in April and/or September 2013. Study staff assessed the participants at the local hospital and blood samples were obtained at each assessment. All participants were simultaneously followed-up for TB through national registers.

Assessment of TB, TB treatment status, QFT and definition of *Mtb* infection

Information on TB diagnosis and treatment was obtained from the Greenlandic TB notification system where cases, following WHO case definitions, are notified to the National Board of Health with mandatory notification since 1955. Subsequent TB was defined as TB diagnosed from study enrolment to end of follow-up. Information on preventive monotherapy and QFT results prior to enrolment was obtained from medical records and the national laboratory database; results originating from routine TB diagnostics, contact tracing and population screening. The Greenlandic treatment regimens, curative treatment (TB) and preventive monotherapy, follow WHO recommendations.

The Greenlandic healthcare system and the present study used the commercialised QFT to assess detectable *Mtb* infection. QFT is a standardised IGRA measuring T-cell-induced

immune responses to the *Mtb* antigens ESAT-6, CFP10, and TB7.7 [14,21,22]. QFTs were analysed at Statens Serum Institut, Denmark (study QFTs) and at the Central Laboratory, Queen Ingrid's Hospital, Nuuk (prior QFTs) following the instructions of the manufacturer [22].

Ongoing *Mtb* infection was defined as a positive QFT (prior testing or at enrolment) without having received treatment (curative or preventive). Prior *Mtb* infection was defined as either having notified TB prior to enrolment or having received preventive monotherapy prior to enrolment. At enrolment, *Mtb* infection stages were defined as: (1) *Mtb* infection undetectable by QFT, (2) ongoing *Mtb* infection, non-treated, and (3) prior *Mtb*-infection, treated. The category prior *Mtb* infection included both participants treated for notified TB and with preventive monotherapy. We compared groups by *Mtb* infection status (*Mtb* infection undetectable by QFT vs. *Mtb* infection) and among *Mtb*-infected by treatment status (prior *Mtb* infection vs. ongoing *Mtb* infection).

Mtb antigens, laboratory analyses and definition of immune responses

Selected *Mtb* antigens. We evaluated immune responses to 15 antigens categorised as follows: early *Mtb* infection stage antigens (Rv0203, Rv0642, Rv1196), constitutively expressed antigens (ESAT-6, CFP10, Rv3614, Rv3849, Rv3865, Rv3872), LTBI antigens (Rv1284, Rv2031, Rv2244, Rv2659, Rv2660c) and *Mtb* complex antigens (PPD). Currently, only ESAT-6, CFP10 and PPD are available in commercial tests. ESAT-6 and CFP10 were categorised as QFT antigens. Rv0203, Rv0642, Rv1196, Rv3614, Rv3849, Rv3865, Rv3872, Rv1284, Rv2031, Rv2244, Rv2659, and Rv2660c were categorised as non-QFT antigens. The non-QFT antigens were selected in June 2012 using the TB database at <http://www.tbdb.org/>. The expression profiles of the individual antigens were compared with the expression profile of Ag85B, which is a signature antigen of early expression [13]. The correlation of the individual antigens with Ag85B subsequently designated the antigen groups described above. Additional information on the selected antigens are presented in Table A in [S1 File](#).

Laboratory analyses. Immune responses to *Mtb* antigens were assessed using a 7-day interferon gamma release assay (IGRA) with whole blood (WB) antigen stimulation done on site in Greenland and subsequent quantification of T-cell-induced interferon gamma (IFN γ) by enzyme-linked immunosorbent assay (ELISA) in Denmark. In brief, WB was incubated with antigens in final peptide or PPD concentration 5 μ g/ml in 200 μ L volumes for 7 days at 37°C in a humidified incubator at 5% CO $_2$. All samples were done in triplicates. WB incubated without antigen (NIL) and WB incubated with phytohaemagglutinin (PHA, 5 μ g/ml) were used as negative and positive controls [16]. Antigens were prepared as peptide pools with characteristics presented in Table A in [S1 File](#). Rv0642, Rv1196 and Rv2659 were divided into pools a, b, and/or c due to antigen size, achieving peptide pools with a maximum of 19 peptides (median = 13). In Greenland, samples were stored at -20°C before and during transport to Denmark; transportation took place within one month. In Denmark, samples were stored at -80°C until ELISA analysis. The laboratory analysis is described in detail elsewhere [16].

Definition of immune responses, conversion and reversion. Immune responses were calculated as medians (IFN γ values, pg/ml) for triplicate wells. An immune response to *Mtb* antigens was defined as positive if IFN γ was >19.5 pg/ml AND fulfilled the following criteria: a) response (after NIL (background) subtraction) >41.5 pg/ml OR b) the ratio (between response and NIL) >antigen-specific cut-points estimated by mixture models. Antigen conversion was defined as converting from a negative to a positive immune response; antigen reversion was defined as reverting from a positive to a negative immune response. Immune responses to antigen pools (Rv0642, Rv1196, Rv2659) or groups of antigens (QFT, constitutive, early, LTBI, Rv2659/Rv1196) were defined as having an immune response to at least one of the

pools or antigens, and IFN γ response magnitude was defined by the maximum response. Based on our findings we additionally evaluated two combinations of antigens: Rv2659/Rv1196 (as described above) and CFP10-Rv2659/Rv1196 requiring having an immune response to both CFP10 and Rv2659/Rv1196.

Antigen specific cut-points. The cohort of the 65 study participants were nested in a larger cohort study of 911 Greenlanders [16] and the definition of a positive immune response was derived from the sum of immunological data from this larger study population. In the cohort of 911 Greenlanders, 19.5 pg/ml was the observed 95% quantile of the NIL IFN γ values and 41.5 pg/ml was the observed 99% quantile of the NIL IFN γ values [16]. The antigen specific cut-points estimated by mixture models were based on the ratios between antigen stimulated wells and NIL wells for the 65 participants at first assessment, except for Rv1284, Rv2660c, Rv2659, Rv3849, and PPD. For Rv3849 the antigen specific cut-point was estimated using information from all three assessments, as estimation convergence could not be achieved by first assessment information only. For Rv1284, Rv2659, Rv2660c, and PPD the antigen specific cut-points were estimated using immunological data from the cohort of 911 Greenlanders described above. The logarithm to the ratios were calculated as $\log((\text{IFN}\gamma \text{ in antigen stimulated wells} + 0.1)/(\text{IFN}\gamma \text{ in NIL wells} + 0.1))$, 0.1 was added IFN γ responses on both sides of the fraction to allow for IFN γ values of zero. The distribution of the logarithm to the ratio was modelled as a mixture of two normal distributions with the same variance but different means estimated in a mixture model by an EM-algorithm using the R package *mixtool* [23,24]. The two normal distributions were interpreted as the positive immune responses and the negative immune responses, allowing for estimation of sensitivity and specificity for a given cut-point. The estimation process is illustrated elsewhere [16]. In the analyses, the cut-point ratios were chosen so that the estimated specificity was 95%. The estimated cut-points used in the definition of a positive immune response in the analyses are presented in Table A in S1 File. The method is described in detail elsewhere [16].

Statistical analysis

Homogeneity among participants with *Mtb* antigen immune responses (prior *Mtb* infection vs. ongoing *Mtb* infection) was evaluated for prevalence by logistic regression and for IFN γ response by Kruskal-Wallis test. The annual risk of conversion was estimated from the conversion rate. The conversion rate was estimated among participants with a negative immune response at enrolment with at least two subsequent assessments using binomial regression with a complementary log-log link and with the logarithm of the observation time as offset. The annual risk of reversion was estimated in a similar way, except it was based on participants with a positive immune response at enrolment or at second assessment, with at least one subsequent assessment. Associations between *Mtb* infection groups and risk of conversion/reversion were evaluated using the above binomial regression. The average annual conversion risk for a group of antigens was estimated using the same model but with data for each antigen included in the analyses assuming similar conversion rates for all antigens. Associations between positive antigen immune responses and subsequent TB were evaluated by Hazard Ratios (HRs) using Cox regression with age as underlying time scale, with adjustment for *Mtb* infection status (undetectable/detectable) and with follow-up until the first of the following events: TB, death or end of follow-up (31 December 2014). In the analyses of immune responses at enrolment (negative/positive), all participants were included and followed from enrolment. In the analyses of conversion and reversion during follow-up (no/yes), all participants assessed at least twice were included; follow-up began at second assessment and exposure was allowed to be time-dependent. If only first and third assessments were available, follow-up began at the

midpoint between first and third assessment with the assumption that any observed change between first and third assessment happened before beginning of follow-up. A substantial CPF10 and ESAT-6 increase was defined as >75% quantile of changes for all participants between first and second assessment. All tests and 95% confidence intervals (CIs) were based on Wald statistics. Analyses were performed using the R software.

Ethical considerations

The study fulfilled the Helsinki Declaration II. Written and informed consent was given by all participants and by parents or legal guardians of children <age 18. Child acquiescence was required for children <age 18. All participants with a positive QFT were referred to the local hospital for further evaluation. In the Tasiilaq region, individuals with a positive QFT but without clinical indication of TB, were followed closely by the TB health personnel with clinical assessments. The Commission for Scientific Research in Greenland (approval No. 2012–4) and the Danish Data Protection Agency approved the studies.

Results

Overall, 65 participants were enrolled (60 in October–November 2012 and 5 in April 2013). [Table 1](#) and [Table B in S1 File](#) present characteristics at enrolment and the 65 participants were categorised as follows into one of three groups: 1) undetectable *Mtb* infection at enrolment as measured by QFT: 11 (17%), 2) ongoing *Mtb* infection: 22 (34%) and 3) prior *Mtb* infection: 32 (49%). The median age was 19 years and few participants were BCG-vaccinated $N = 6$ (9%). More women had received prior treatment as compared with men (61% vs. 34%) and more men developed TB during follow-up as compared with women (14% vs. 3%). Participation was not associated with sex or BCG vaccination ([Table C in S1 File](#)).

Immunity at enrolment

Among all 65 participants, 42 (65%) had an immune response to at least one of the 12 non-QFT antigens and 34% to three or more non-QFT antigens ([Fig A in S1 File](#)). [Table 2](#) presents the prevalence of positive immune responses and the median IFNy response by *Mtb* infection stage at enrolment regardless of subsequent TB, reversion of immune responses, or QFT conversion during follow-up. The prevalence was highest for PPD and QFT antigens (range 45%–80%) and lowest for constitutively expressed antigens (range 2%–13%). Rv1196 and Rv2659 had the highest prevalence, while immune responses to Rv2660c were not detectable in the study population. Four participants without detectable *Mtb* infection at enrolment had immune responses to Rv2031, Rv2659, and Rv3849. Prevalence and IFNy response levels did not differ among participants with prior as compared with ongoing *Mtb* infection, except for the QFT IFNy response level, which was significantly higher for participants with ongoing *Mtb* infection ([Table 2](#)). For the distribution of IFNy responses at enrolment, see [Fig 1](#); immune responses among participants with subsequent TB have been highlighted in red, all occur among participants with ongoing *Mtb* infection at enrolment.

Immunity over time and during different stages of infection

Of the 65 participants, 60 (92%) were assessed at least two times and 49 (75%) three times during 11 months ([Table 1](#)). [Tables 3](#) and [4](#) present the estimated annual conversion and reversion risk during follow-up. The risks are cumulative risks, e.g. risk of conversion is the risk of ever converting, regardless of subsequent reversion, among participants who were without immune responses to *Mtb* antigens at enrolment. Overall, there was a high annual conversion and

Table 1. Characteristics at enrolment by Mtb infection status among 65 young adults in East Greenland.

Characteristics at enrolment	All	<i>Mtb</i> infection undetectable by QFT					<i>Mtb</i> infection		All
	N	N	N	Ongoing	Prior		Subsequent TB	N	
					Non-treated	Treated with preventive monotherapy			Treated for notified TB
All	65	11	54	22	12	20	5		
Sex									
Women	36	5	31	9	8	14	1		
Men	29	6	23	13	4	6	4		
Age (years)									
16–19	43	8	34	11	8	15	4		
20–22	22	3	18	11	2	5	1		
Ethnicity									
Inuit	64	10	54	22	12	20	5		
Non-Inuit	1	1	0	0	0	0	0		
BCG vaccination									
No	58	10	48	19	12	17	4		
Yes	6	0	6	3	0	3	1		
Unknown	1	1	0	0	0	0	0		
Year of: prior positive QFT or TST/ notified TB									
1996–2009	15	-	15	12	0	3	1		
2010–2012	37	-	37	10	12	15	2		
2012									
In TB treatment	3	-	-	-	-	3	-		
None	11	11	0	0	0	0	2		
Clinical information									
Pulmonary TB						16	4		
Extra-pulmonary TB						4	1		
Assessed in									
September 2012	60	11	49	18	12	19	5		
April 2013	57	9	48	20	10	18	4		
September 2013	57	10	47	20	9	18	5		
Number of times assessed									
Two	60	10	50	20	11	19	5		
Three	49	9	40	16	8	16	4		

Subsequent TB: TB notified to the National TB register at any point from study enrolment to end of follow-up.

Mtb infection was defined a positive QFT (prior or at enrolment) and categorised as ongoing (non-treated) or prior (treated for notified TB or having received preventive monotherapy).

QFT: QuantiFERON®-TB Gold test. TST: Tuberculin skin test. BCG: Bacillus Calmette-Guérin vaccination status estimated from birth cohort.

For further categorisation of year of QFT or notified TB/preventive monotherapy among participants at enrolment, please see Table B in [S1 File](#).

<https://doi.org/10.1371/journal.pone.0177906.t001>

reversion risk for all non-QFT antigens; conversion (range 6–69%) and reversion (range 41–95%). For participants reverting from first to second assessment, the median IFN γ level at second assessment was 7.4 pg/ml (Fig B in [S1 File](#)), thus the high reversion risk could not be ascribed to IFN γ responses decreasing to levels just below the cut-point.

Table 2. Prevalence of immune responses and median IFN γ response among participants at enrolment by *Mtb* infection status, among 65 young adults in East Greenland.

	All			<i>Mtb</i> infection undetectable by QFT			<i>Mtb</i> infection									Prevalence: prior vs. ongoing P value ^a	IFN γ response: prior vs. ongoing P value ^b
							All			Ongoing, non-treated			Prior, treated ^h				
	%	(N)	IFN γ response median (range) pg/ml	%	(N)	IFN γ response median (range) pg/ml	%	(N)	IFN γ response median (range) pg/ml	%	(N)	IFN γ response median (range) pg/ml	%	(N)	IFN γ response median (range) pg/ml		
All		(65)			(11)			(54)			(22)			(32)			
QFT	80	(52)	209 (16–400)	0	(0)	-	96	(52)	210 (16–400)	95	(21)	400 (16–400)	97	(31)	157 (16–400)	0.79	0.01
7-day IGRAs																	
PPD^c	80	(51)	2361 (178–4366)	0	(0)	-	94	(51)	2361 (178–4366)	95	(21)	2457 (310–4366)	94	(30)	2177 (178–3741)	0.71	0.31
QFT Ags^d																	
(any^e/max^f)	80	(52)	850 (47–4156)	0	0	-	96	(52)	850 (47–4156)	95	(21)	1099 (47–4156)	97	(31)	764 (80–3647)	0.79	0.24
ESAT-6	78	(51)	764 (47–3647)	0	(0)	-	94	(51)	764 (47–3647)	95	(21)	1099 (47–3061)	94	(30)	756 (80–3647)	0.79	0.41
CFP10	45	(29)	429 (46–4156)	0	(0)	-	54	(29)	429 (46–4156)	55	(12)	633 (46–4156)	53	(17)	318 (50–784)	0.92	0.11
Constitutive^g																	
(any/max)	17	(11)	109 (48–234)	18	(2)	51 (49–53)	17	(9)	121 (48–234)	14	(3)	109 (82–121)	17	(6)	171 (48–234)	0.62	0.30
Rv3614	11	(7)	89 (42–215)	0	(0)	-	13	(7)	89 (42–215)	9	(2)	102 (82–121)	16	(5)	89 (42–215)	-	-
Rv3849^c	13	(8)	73 (43–137)	18	(2)	51 (49–53)	11	(6)	100 (43–137)	5	(1)	109 (-)	16	(5)	92 (43–137)	-	-
Rv3865	3	(2)	90 (48–133)	0	(0)	-	4	(2)	90 (48–133)	0	(0)	-	6	(2)	90 (48–133)	-	-
Rv3872	2	(1)	234 (-)	0	(0)	-	2	(1)	234 (-)	0	(0)	-	3	(1)	234 (-)	-	-
Early Ags																	
(any/max)	40	(26)	95 (44–617)	0	(0)	-	48	(26)	95 (44–617)	54	(12)	83 (44–617)	44	(14)	106 (46–329)	0.44	0.72
Rv0203^c	22	(14)	74 (43–329)	0	(0)	-	26	(14)	74 (43–329)	36	(8)	63 (44–232)	19	(6)	85 (43–329)	-	-
Rv0642	5	(3)	87 (69–130)	0	(0)	-	6	(3)	87 (69–130)	9	(2)	78 (69–87)	3	(1)	130 (-)	-	-
Rv1196	35	(23)	81 (45–617)	0	(0)	-	43	(23)	81 (45–618)	41	(9)	81 (48–618)	44	(14)	87 (45–329)	0.84	0.38
LTBI Ags																	
(any/max)	55	(36)	105 (44–918)	36	(4)	61 (50–88)	60	(32)	128 (44–918)	60	(13)	106 (47–304)	60	(19)	177 (44–918)	0.98	0.60
Rv2031^c	20	(13)	79 (47–624)	9	(1)	50 (-)	22	(12)	129 (47–624)	23	(5)	61 (47–207)	22	(7)	184 (66–624)	-	-
Rv2244	6	(4)	80 (46–120)	0	(0)	-	7	(4)	80 (46–120)	5	(1)	104 (-)	9	(3)	57 (46–120)	-	-
Rv1284	15	(10)	67 (47–918)	0	(0)	-	19	(10)	67 (47–918)	14	(3)	47 (47–72)	22	(7)	71 (50–918)	-	-

(Continued)

Table 2. (Continued)

	All			<i>Mtb</i> infection undetectable by QFT			<i>Mtb</i> infection									Prevalence: prior vs. ongoing P value ^a	IFN γ response: prior vs. ongoing P value ^b
							All			Ongoing, non-treated			Prior, treated ^h				
	%	(N)	IFN γ response median (range) pg/ml	%	(N)	IFN γ response median (range) pg/ml	%	(N)	IFN γ response median (range) pg/ml	%	(N)	IFN γ response median (range) pg/ml	%	(N)	IFN γ response median (range) pg/ml		
Rv2659	43	(28)	74 (43–491)	36	(4)	61 (43–88)	44	(24)	92 (44–491)	41	(9)	111 (52–304)	47	(15)	62 (44–491)	0.66	0.42
Rv2660c	0	(0)	-	0	(0)	-	0	(0)	-	0	(0)	-	0	(0)	-		
Combination of antigens																	
Rv2659/Rv1196	55	(36)	97 (43–617)	36	(4)	61 (43–88)	30	(32)	110 (44–617)	54	(12)	130 (48–617)	63	(20)	90(44–491)	0.56	0.24

^a P values relate to homogeneity test for odds of having an immune response to the selected *Mtb* antigen among participants with *Mtb* infection; prior vs. ongoing.

^b P values relate to homogeneity for IFN γ medians evaluated by the Kruskal-Wallis test among participants with *Mtb* infection; prior vs. ongoing.

^c One donor missing one stimulation.

^d Ags: antigens.

^e Immune responses for groups of antigens (QFT, constitutive, early, LTBI, Rv2659/Rv1196) were defined as having an immune response to at least one of the antigens and

^fthe IFN γ response magnitude was defined by the maximum response.

^g Constitutive antigens.

^h For numbers on participants treated with preventive monotherapy and participants treated for notified TB, please see Table D in S1 File.

<https://doi.org/10.1371/journal.pone.0177906.t002>

The high annual conversion and reversion risks illustrate that immune responses to *Mtb* antigens increase and decrease to a considerable extent during infection, thus these immune responses are not necessarily sustained in host immunity as an individual with *Mtb* infection can have high levels of immune responses to specific *Mtb* antigens at one point in time and low levels of immune responses below a defined test cut-point at another point in time regardless of treatment. The annual conversion and reversion risks did not differ by *Mtb* infection status (Table 3 and Table E in S1 File), but among participants with ongoing *Mtb* infection, the annual conversion risk was significantly higher for constitutive antigens ($p = 0.048$), the early stage antigen Rv0203 ($p = 0.02$) the LTBI antigen Rv2031 ($p = 0.02$) as compared with participants with prior *Mtb* infection. In addition, the annual reversion risk was significantly higher for Rv2031 among participants with ongoing *Mtb* infection.

To summarise the general level of non-QFT antigen conversion presented in Table 3, we calculated an estimate including all conversions for all antigens or a group of antigens as a weighted average for groups of antigens. In comparison, the annual conversion risks from Table 3 are cumulative risks for antigen conversion within each antigen group. For all participants, the weighted average conversion risk for non-QFT antigens was 22% based on annual conversion risks of 6–69% for the single antigens (Table 3), the weighted average conversion risk for the antigens in each group was 29% for early stage antigens, 13% for constitutive antigens and 24% for LTBI antigens. As different *Mtb* antigens are expressed during different stages of infection, we anticipated more conversion (change in immune response over time)

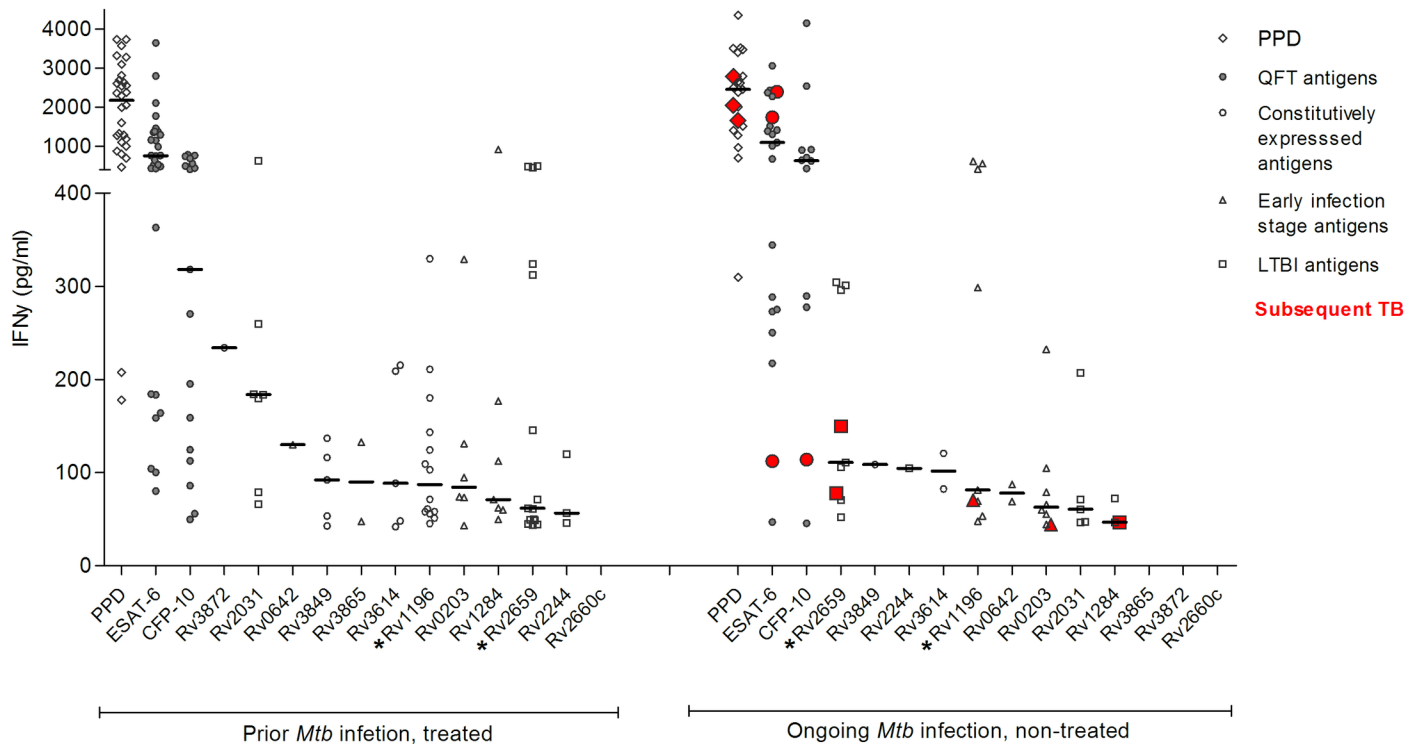


Fig 1. IFN γ responses among participants with *Mtb* antigen immune responses at enrolment among participants with *Mtb* infection. Three participants (red) categorised at *Mtb* infected non-treated develop TB. *The two most prevalent non-QFT antigens in each group. All values are antigen responses after background subtraction in pg/ml with medians.

<https://doi.org/10.1371/journal.pone.0177906.g001>

among participants with early stage antigen conversion. However, participants with and without early stage antigen immune responses at enrolment had similar levels of subsequent average conversion risk for constitutive (23% vs. 25%) and LTBI antigens (19% vs. 10%). When including only participants with QFT conversion during follow-up (N = 3) in the analysis, the weighted average conversion risk for non-QFT antigens was 40% as compared to 22% for all participants, however numbers are small.

Immunity and risk of subsequent TB

During a total of 132 person-years, 5 (8%) participants were notified with TB, corresponding to an average TB incidence of 3,788/100,000 participants/year. Fig 2A–2E present changes in the immune response to *Mtb* antigens as infection occurs and just before disease develops in five participants with subsequent TB and one participant with QFT conversion during follow-up. The five participants were either QFT-positive at enrolment or became QFT-positive during the study period. All five had an immune response to the early stage antigen Rv1196 or LTBI antigen Rv2659. Four out of five experienced an increase in CFP10 response prior to TB development. Overall, the average conversion risk for non-QFT antigens among participants with subsequent TB was 27% vs. 21% for participants without subsequent TB, reflecting no difference in non-QFT antigen conversion by subsequent TB.

For non-QFT antigens, neither having an immune response to *Mtb* antigens upon enrolment nor a history of conversion or reversion during follow-up was found to be associated with risk of subsequent TB (Table 5). A history of QFT or ESAT-6 conversion was associated with an increased risk of TB, while a history of CFP10 conversion was not. However, a history

Table 3. Estimated annual conversion risk during follow-up among participants without detectable *Mtb* antigen immune responses at enrolment by *Mtb* infection status for 60 participants assessed more than once.

	All										Mtb infection undetectable by QFT										Mtb infection										Conversion risk QFT detectable <i>Mtb</i> infection, prior ^d vs. ongoing P value ^b
	Without detectable <i>Mtb</i> antigen immune responses at enrolment					Conversion risk: <i>Mtb</i> infection QFT undetectable vs. detectable P value ^a					All					Ongoing, non-treated					Prior, treated ^d										
	Estimated annual conversion risk %	Convert during follow-up N	Total responses at enrolment N	Without detectable <i>Mtb</i> antigen immune responses at enrolment N	Convert during follow-up	Estimated annual conversion risk %	Estimated annual conversion risk %	Convert during follow-up N	Total responses at enrolment N	Without detectable <i>Mtb</i> antigen immune responses at enrolment N	Convert during follow-up	Estimated annual conversion risk %	Estimated annual conversion risk %	Convert during follow-up N	Total responses at enrolment N	Without detectable <i>Mtb</i> antigen immune responses at enrolment N	Convert during follow-up	Estimated annual conversion risk %	Estimated annual conversion risk %	Convert during follow-up N	Total responses at enrolment N	Without detectable <i>Mtb</i> antigen immune responses at enrolment N	Convert during follow-up	Estimated annual conversion risk %	Estimated annual conversion risk %	Convert during follow-up N	Total responses at enrolment N				
QFT	26	3	12	3	31	1.00	3	10	2	0	0	0	2	1	1	0	0	0	0	1	1	0	0	1	1	-					
7-day IGRAs																															
PPD	54	7	13	5	50	0.57	5	10	3	67	1	1	1	1	1	59	1	1	1	2	1	2	2	2	0.74						
QFT antigens																															
Any ^c	54	7	12	5	48	0.34	5	10	2	77	1	1	1	1	77	1	1	77	1	1	1	1	1	1	1.00						
ESAT-6	58	8	13	5	48	0.14	5	10	3	86	3	3	1	1	91	2	2	91	2	2	2	2	2	2	0.70						
CFP10	39	12	32	3	31	0.54	3	10	22	42	9	3	8	44	6	14	44	6	14	6	14	14	14	14	0.88						
Constitutive antigens																															
Any ^c	30	14	50	3	36	0.64	3	8	11	28	11	42	8	18	14	3	24	14	3	3	24	24	24	24	0.048						
Rv3614	24	12	54	3	30	0.61	3	10	9	23	9	44	6	19	14	3	25	14	3	3	25	25	25	25	0.14						
Rv3849	15	7	51	2	25	0.38	2	8	5	13	5	43	5	19	0	0	24	0	0	0	24	24	24	24	1.00						
Rv3865	6	3	58	1	11	0.50	1	10	2	5	2	48	1	20	4	1	28	4	1	1	28	28	28	28	0.81						
Rv3872	10	5	59	0	0	-	0	10	5	12	5	49	3	20	8	2	29	8	2	2	29	29	29	29	0.38						
Early antigens																															
Any ^c	51	19	35	3	30	0.16	3	10	16	59	16	25	8	9	50	8	16	50	8	8	16	16	16	16	0.24						
Rv0203	25	11	47	2	21	0.73	2	10	9	27	9	37	7	13	10	2	24	10	2	2	24	24	24	24	0.02						
Rv0642	14	7	57	2	21	0.46	2	10	5	12	5	47	1	18	16	4	29	16	4	4	29	29	29	29	0.39						
Rv1196	53	21	38	3	31	0.15	3	10	18	60	18	28	10	12	50	8	16	50	8	8	16	16	16	16	0.23						
LTBI antigens																															
Any ^c	71	23	27	5	61	0.45	5	7	18	75	18	20	8	8	73	10	12	73	10	10	12	12	12	12	0.82						
Rv2031	34	15	47	1	12	0.20	1	9	14	39	14	38	10	16	20	4	22	20	4	4	22	22	22	22	0.02						
Rv2244	14	7	56	0	0	-	0	10	6	17	6	46	3	19	17	4	27	17	4	4	27	27	27	27	0.93						
Rv1284	13	6	51	2	20	0.44	2	10	4	11	4	41	2	18	10	2	23	10	2	2	23	23	23	23	0.84						
Rv2659	69	28	35	5	61	0.60	5	7	23	71	23	28	10	12	73	13	16	73	13	13	16	16	16	16	0.76						
Rv2660c	-	0	60	0	-	-	0	10	0	-	0	50	0	20	-	0	30	-	0	0	30	30	30	30	-						

(Continued)

Table 3. (Continued)

	Mtb infection												Conversion risk QFT detectable Mtb infection, prior ^c vs. ongoing P value ^b	
	Mtb infection undetectable by QFT						Mtb infection							
	All			Conversion risk: Mtb infection QFT undetectable vs. detectable P value ^a			All		Ongoing, non-treated		Prior, treated ^d			
	Without detectable Mtb antigen immune responses at enrollment	Convert during follow-up	Total	Without detectable Mtb antigen immune responses at enrollment	Convert during follow-up	Total	Without detectable Mtb antigen immune responses at enrollment	Convert during follow-up	Total	Without detectable Mtb antigen immune responses at enrollment	Convert during follow-up	Total		
Estimated annual conversion risk %	N	N	Estimated annual conversion risk %	N	N	Estimated annual conversion risk %	N	N	Estimated annual conversion risk %	N	N			
Combinations of antigens ^c														
Rv2659/Rv1196	72	24	27	61	5	7	0.42	19	20	9	9	10	11	0.92
CFP10 and Rv2659/Rv1196	46	19	41	31	3	10	0.31	16	31	7	12	9	19	0.60

The table presents three columns per group (e.g. all, Mtb infection undetectable by QFT, Mtb infection). The right column is the total number of participants without detectable Mtb antigen immune responses at enrollment for each antigen (e.g. for Rv0203, 47 participants did not have a detectable immune response to Rv0203 at enrollment). The middle column presents the number of participants who convert during follow-up (e.g. for Rv0203, 11 of 47 participants convert from a negative to a positive immune response to the antigen during follow-up), and the left column presents the estimated annual conversion risk (e.g. for Rv0203 the annual conversion risk is 25%).

The estimated annual conversion risk was based on all conversion events, regardless of subsequent reversion.

^a P values relate to homogeneity test for odds of conversion of Mtb antigen immune responses among all participants by Mtb infection status; QFT undetectable vs. detectable.

^b P values relate to homogeneity test for odds of conversion of Mtb antigen immune responses among participants with Mtb infection; prior vs. ongoing.

^c A participant without Mtb antigen immune responses to groups of antigens (QFT, constitutive, early, LTBI, Rv2659/Rv1196) required all of the antigen immune responses within the group to be below the cut-point.

^d Prior Mtb infection included both participants with prior notified TB and participants who received preventive monotherapy.

<https://doi.org/10.1371/journal.pone.0177906.t003>

Table 4. Estimated annual reversion risk during follow-up, among participants with *Mtb* antigen immune response at least once and with subsequent assessment, regardless of *Mtb* infection status.

	Estimated annual reversion risk	Participants with <i>Mtb</i> antigen immune response at least once and with subsequent assessment	
		Revert during follow-up	Total
	%	N	N
QFT	0	0	49
7-day IGRAs			
PPD	5	2	52
QFT antigens			
Any ^a	5	2	53
ESAT-6	5	2	52
CFP10	34	10	35
Constitutive antigens			
Any ^a	60	8	16
Rv3614	65	5	9
Rv3849	91	11	14
Rv3865	46	1	3
Rv3872	76	3	5
Early antigens			
Any ^a	44	13	39
Rv0203	52	8	19
Rv0642	45	2	6
Rv1196	48	13	36
LTBI antigens			
Any ^a	41	16	50
Rv2031	78	13	19
Rv2244	95	9	9
Rv1284	93	12	14
Rv2659	49	17	47
Rv2660c	-	0	0
Combinations of antigens			
Rv2659/1196	28	11	54
CFP10 and Rv2659/Rv1196	55	14	32

The annual reversion risk was significantly higher for Rv2031 ($p < 0.05$) among participants with ongoing (non-treated) *Mtb* infection as compared with participants with prior (treated) *Mtb* infection, see Table E in [S1 File](#).

^a A positive immune response to groups of antigens (QFT, constitutive, early, LTBI, Rv2659/Rv1196) required all of the antigen immune responses within the group to be above the cut-point.

<https://doi.org/10.1371/journal.pone.0177906.t004>

of a substantial CFP10 response increase of ≥ 103.4 pg/ml was associated with a 10-fold increased risk of TB (Table 5, Fig 2A–2E). In comparison, this association was not found for the non-QFT antigens Rv1196 or Rv2659. We further investigated the timing of QFT conversion relative to the timing of subsequent TB. Three participants had QFT conversion during follow-up (Fig 2D–2F), and using this to determine the approximate time of *Mtb* infection [25], the time from infection to TB was 7 and 10 months for two participants, while no TB was observed in one participant during 21 months of follow-up (Fig C in [S1 File](#)). Similarly, among

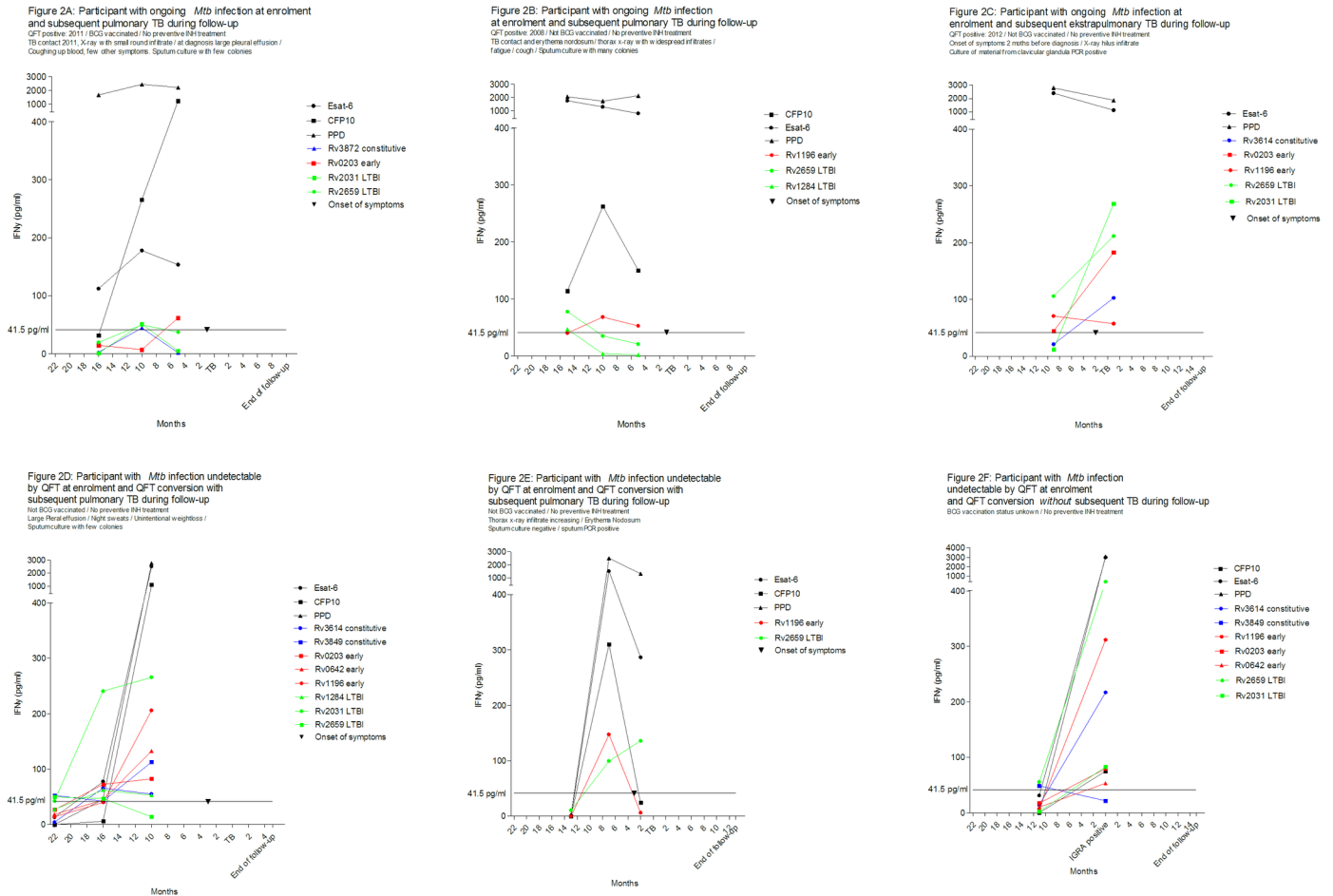


Fig 2. A-F. Changes in immune response to *Mtb* antigens as infection occurs and just before disease develops. Immune responses to *Mtb* antigens are shown in pg/ml after background subtraction by month of follow-up before and after TB notification or QFT conversion. Information on five participants with subsequent TB during follow-up and one participant with QFT conversion during follow-up are presented. A-C) Participants with ongoing *Mtb* infection at enrolment and subsequent TB during follow-up. D-E) Participants with *Mtb* infection undetectable by QFT at enrolment and subsequent TB during follow-up. F) One participant with *Mtb* infection undetectable by QFT at enrolment and with QFT conversion during follow-up. Information on symptom onset, clinical assessment at TB diagnosis and timing of TB diagnosis is provided.

<https://doi.org/10.1371/journal.pone.0177906.g002>

participants with a substantial CFP10 increase during follow-up (N = 21), we observed TB in four participants 7, 10, 10 and 10 months following CFP10 increase, while no TB was observed in 17 participants until end of follow-up (Fig D in S1 File).

Discussion

In this study, we found that immunity to *Mtb* infection, measured by immune responses to *Mtb* antigens representing different stages of *Mtb* infection, revealed considerable fluctuation in host immunity with high conversion and reversion. Participants with ongoing *Mtb* infection at enrolment experienced significantly higher conversion as compared with participants with prior infection. High non-QFT antigen conversion was also observed at the time of infection defined by QFT conversion. Fluctuations in immune responses to the studied non-QFT antigens were not associated with subsequent TB.

The studied non-QFT antigens were *a priori* considered to be promising novel TB antigen candidates and were believed to be expressed during different stages of *Mtb* infection [26–38].

Table 5. Crude Hazard ratios (HRs) for subsequent TB (N = 5) by *Mtb* antigen immune responses at enrolment, history of conversion and history of reversion during follow-up among 60 participants assessed more than once.

	Participants with <i>Mtb</i> antigen immune response at enrolment				History of conversion during follow-up				History of reversion during follow-up			
	All	TB			All	TB			All	TB		
	%	% (N)	HR (95% CI)	P	% ^a	% (N)	HR (95%CI)	P	% ^a	% (N)	HR (95% CI)	P
QFT	80	60 (3 ¹)	0.35 (0.05–2.53)	0.30	3	40 (2)	16.14 (1.42–183.00)	0.03	0	0 (0)	-	-
7-day IGRAs												
PPD	80	60 (3)	0.38 (0.05–2.85)	0.35	11	40 (2)	5.12(0.64–41.20)	0.13	3	0 (0)	-	-
QFT antigens												
Any	80	60 (3)	0.35 (0.05–2.53)	0.30	10	40 (2)	9.59 (1.29–71.33)	0.03	3	0 (0)	-	-
Esat-6	78	60 (3)	0.37 (0.05–2.68)	0.33	12	40 (2)	9.59 (1.29–71.33)	0.03	3	0 (0)	-	-
Increase ^b	-	-	-	-	-	40 (2)	1.60 (0.24–10.74)	0.63	-	-	-	-
CFP10	45	20 (1)	0.29 (0.03–2.87)	0.29	18	60 (3)	4.17 (0.64–27.02)	0.13	14	20 (1)	2.35 (0.24–23.33)	0.47
Increase ^c	-	-	-	-	-	80 (4)	10.06 (1.05–96.25)	<0.05	-	-	-	-
Constitutive Ags												
Any	17	20 (1)	1.19 (0.13–11.1)	0.88	17	40 (2)	2.64 (0.41–17.07)	0.31	11	20 (1)	2.22 (0.21–23.89)	0.51
Rv3614	11	0 (0)	-	-	14	40 (2)	2.63 (0.42–16.27)	0.30	8	0 (0)	-	-
Rv3849	13	20 (1)	1.53 (0.17–13.99)	0.71	13	0 (0)	-	-	17	0 (0)	-	-
Rv3865	3	0 (0)	-	-	4	0 (0)	-	-	2	0 (0)	-	-
Rv3872	2	0 (0)	-	-	8	20 (1)	4.64 (0.40–54.21)	0.22	3	20 (1)	-	-
Early Ags												
Any	40	20 (1)	0.49 (0.05–4.63)	0.53	30	60 (3)	6.56 (0.71–60.13)	0.10	19	20 (1)	1.52 (0.16–14.66)	0.72
Rv0203	22	20 (1)	1.34 (0.13–13.5)	0.80	17	40 (2)	4.15 (0.55–30.98)	0.17	12	0 (0)	-	-
Rv0642	5	0 (0)	-	-	11	20 (1)	3.55 (0.32–29.44)	0.30	3	20 (1)	-	-
Rv1196	35	20 (1)	0.58 (0.06–5.43)	0.64	33	60 (3)	2.37 (0.39–14.27)	0.34	19	20 (1)	1.52 (0.16–14.66)	0.72

(Continued)

Table 5. (Continued)

	Participants with <i>Mtb</i> antigen immune response at enrolment				History of conversion during follow-up				History of reversion during follow-up			
	All	TB			All	TB			All	TB		
	%	% (N)	HR (95% CI)	P	% ^a	% (N)	HR (95%CI)	P	% ^a	% (N)	HR (95% CI)	P
<i>Increase</i> ^d	-	-	-	-	-	40 (2)	1.56 (0.25–9.87)	0.64	-	-	-	-
LTBI Ags												
Any	55	60 (3)	1.22 (0.20–7.35)	0.83	41	40 (2)	0.88 (0.14–5.45)	0.89	23	40 (2)	2.81 (0.42–18.83)	0.29
Rv2031	20	20 (1)	0.88 (0.10–8.04)	0.91	25	40 (2)	2.11 (0.32–13.77)	0.44	18	40 (2)	3.15 (0.49–20.38)	0.23
Rv2244	6	0 (0)	-	-	12	0 (0)	-	-	13	0 (0)	-	-
Rv1284	15	20 (1)	1.76 (0.19–16.43)	0.62	12	20 (1)	1.62 (0.17–15.75)	0.68	17	20 (1)	1.09 (0.12–11.03)	0.94
Rv2659	43	60 (3)	2.67 (0.39–14.28)	0.35	50	40 (2)	0.45 (0.06–3.10)	0.42	24	40 (2)	2.34 (0.32–16.82)	0.40
<i>Increase</i> ^e	-	-	-	-	-	20 (1)	0.77 (0.08–7.16)	0.82	-	-	-	-
Combinations of antigens												
Rv2659/Rv1196	55	60 (3)	1.47 (0.24–9.19)	0.68	44	40 (2)	0.64 (0.10–4.01)	0.63	16	20 (1)	1.61 (0.16–16.32)	0.69
CFP10 and Rv2659/Rv1196	31	20 (1)	0.64 (0.06–6.84)	0.71	30	60 (3)	2.51 (0.39–16.31)	0.34	19	40 (2)	5.53 (0.67–46.46)	0.11

HRs relate to the risk of TB during follow-up with participants without detectable *Mtb* antigen immune responses as reference.

Adjustment for *Mtb* infection status did not alter the results except for the ESAT-6 conversion association. After adjustment ESAT-6 conversion was not significantly associated with risk of subsequent TB although the HR only decreased marginally HR: 9.09 (0.64–129.28), $p = 0.10$, see Table F in [S1 File](#).

CI: Confidence interval. Ags: Antigens

^a % person years: Proportion of exposure time in person-years during a total of 96.16 person years of follow-up

^b ESAT-6 increase > 587 pg/ml.

^c CFP10 increase > 103 pg/ml.

^d Rv1196 increase > 97 pg/ml.

^e Rv2659 increase > 126 pg/ml

^f In [Fig 2A–2F](#) we present immune responses and clinical information (including information on treatment) for each of the participants who develop TB during follow-up and the three participants who have QFT conversion during follow-up.

<https://doi.org/10.1371/journal.pone.0177906.t005>

In this study, we provided the first comprehensive longitudinal data in a real-life setting for these antigens and the first human data for Rv0642, Rv2244, Rv3614, and Rv3649. Currently, only Rv2031 and Rv2659 have been evaluated longitudinally in humans [39,40], while Rv2660 and Rv1196 are present in two novel TB vaccines in clinical trial [7,41]. Our study documented

that levels of conversion for non-QFT antigens are high during all stages of *Mtb* infection. The same was found for reversion, indicating that reversion may be a part of the natural fluctuations within the host immune response during *Mtb* infection. This is supported by the finding that reversion was not associated with decreased risk of subsequent TB and therefore not as proposed an indicator of an ability to contain infection [25,42].

Our findings suggest that the *Mtb* antigen repertoire exposed to the immune system during natural infection is very versatile and dynamic, and that the studied *Mtb* antigens are expressed during all infection stages. None of the non-QFT *Mtb* antigens were associated with infection stage or disease. For Rv0203, Rv2031, and any early stage antigen, conversion of immune responses were associated with ongoing *Mtb* infection, however the risk of reversion of immune responses was high for the same antigens. This implies that longitudinal and stage-specific evaluation of new vaccine and diagnostic *Mtb* antigens is necessary and supports the use of multiple antigens in novel TB vaccines.

Longitudinal studies on changes in immune responses to *Mtb* antigens are few and not conclusive. Only immune responses towards the non-QFT antigens Rv2659 and Rv2031 have been evaluated longitudinally among humans [39,40]. IFN γ responses to Rv2659 and Rv2031 have been reported to increase after one and/or 40 weeks of isoniazid treatment (N = 60), and increase in Rv2031 IFN γ levels among TB contacts (non-treated) as well as TB patients (during treatment) was reported during 12 months in a study from Ethiopia, however after 12 months the IFN γ levels were comparable to initial IFN γ levels among healthy controls from a TB-endemic region (N = 363) [39,40]. These studies only evaluated median values of IFN γ responses and neither prevalence nor conversion/reversion. In the present study, we find a very high level of reversion for Rv2031 of 78%, which might make cross-sectional assessment of immune responses to Rv2031 and median IFN γ levels difficult to interpret.

The finding that a substantial CFP10 response increase was associated with a 10-fold risk of subsequent TB has, to our knowledge, not previously been described in humans. However, the hypothesis emerged after data analysis and is based on small numbers which should be taken into account. Lin et al observed a significantly higher production of IFN γ in response to CFP10 in peripheral blood mononuclear cells six weeks after *Mtb* infection in non-human primates (NHP) who developed TB compared with those who did not [43]. Thus, the role of CFP10 increase may be a target for examination in other independent studies, and if the above findings are confirmed, CFP10 response increase might be a potential marker for when and among whom preventive TB treatment should be initiated.

Based on the above evaluation of antigen dynamics, we cautiously suggest four characteristics of host immunity to *Mtb* infection. *Mtb* antigens exposed to the host during natural infection may be most potent at the time of infection defined by QFT conversion, reflecting an abrupt primary activation of the immune system at establishment of infection with bacterial replication affecting the host response. Participants with ongoing *Mtb* infection have a significantly higher level of antigen conversion, which might reflect a higher degree of bacterial replication during natural *Mtb* infection when left untreated, leading to the presumption that these individuals might be more susceptible to TB risk factors with suppression of cellular immunity. The substantial fluctuations observed in immune responses to non-QFT antigens suggest that host immunity among individuals with prior and ongoing *Mtb* infection is of a less dormant character than anticipated, a finding also described in NHP [44]. Finally, preceding progression from *Mtb* infection to TB, there is an alteration in immune activity, which in this study is made evident by an increase in CFP10 response. These findings contribute with important insight into the dynamics of the natural human immunity during *Mtb* infection in the absence of an animal model with the ability to capture the full spectrum of human immune characteristics of infection and disease [4].

This study has several strengths; it is unique by being a follow-up study in a setting with high TB transmission, among largely BCG-unvaccinated and NTM-unexposed individuals selected by *Mtb* infection stage. Stratified random sampling optimised the comparison of *Mtb* infection stages; however, small numbers limited the statistical power. Several features of the design minimised information bias. Information was obtained from registers, medical records and assessment at enrolment. Assessment of QFT, QFT antigens (ESAT-6, CFP10) and PPD alongside with novel non-QFT antigens contributed as additional assay controls, which allowed for an evaluation of the internal validity in the absence of a commercial assay. The definition of a positive immune response used in this study was conservative [16]. Furthermore, the observed reversions were substantial and found not to be caused by responses decreasing to levels just below the cut-point. Although the estimated levels of immune responses, conversion and reversion are naturally sensitive to the level of the cut-point, their estimated associations with *Mtb* infection stages and subsequent TB most likely are not. IFN γ as single cytokine readout used to define immune responses to *Mtb* antigens is widely discussed [3]. IFN γ is a robust cytokine essential in the adaptive immune response towards TB [45,46]. Furthermore, IFN γ is used as a readout in standardised interferon gamma release assays (IGRAs) [14,21] and in most of the existing *Mtb* antigen research. As a supplement, an explorative multiplex assay including numerous cytokines could have expanded the evaluation [46]. However, to date, no single cytokine or pattern of cytokines have been shown to be superior, hence we found IFN γ to be a suitable readout in a real-life setting with few laboratory resources [6,12,25,47–52]. Based on the above, we find it unlikely that the observed findings can be ascribed to bias.

Conclusion

In conclusion, we found that human immunity to natural *Mtb* infection evaluated by measured immune responses to *Mtb* antigens is very versatile and shows high levels of conversion and reversion. Our findings suggest that substantial conversion and reversion of immune responses are part of the dynamics of natural *Mtb* infection, but not associated with subsequent TB development. The fluctuations in human immunity to *Mtb* antigens during infection may necessitate longitudinal assessment in the search of TB vaccine candidate antigens to account for temporary conversions and reversions.

Supporting information

S1 File. The S1 File includes the following supporting information listed in the order as referenced in the manuscript. **Table A.** Information on antigens and ratio cut-points used in definition of a positive immune response in the analyses for each *Mtb* antigen.

Table B. Further categorisation of year of QFT testing or TB/preventive treatment among participants at enrolment by *Mtb* infection stage among 65 young adults in East Greenland.

Table C. Characteristics for participants and non-participants and participation rate and OR for participation according to characteristics at enrolment.

Fig A. Distribution of number of immune responses to non-QFT antigens per participant by *Mtb* infection stage at enrolment.

Table D. Prevalence of immune responses and median IFN γ response among participants with prior *Mtb* infection at enrolment by treatment status, among 65 young adults in East Greenland.

Fig B. Level of IFN γ among reverts from first to second assessment (immune responses to 35 antigens in 19 participants).

Table E. Estimated annual reversion risk during follow-up, among participants with *Mtb*

antigen immune response at least once and with subsequent assessment.

Table F. Adjusted Hazard ratios (HRs) for subsequent TB (N = 5) by *Mtb* antigen immune response at enrolment, history of conversion and history of reversion during follow-up. Adjusted for *Mtb* infection status.

Fig C. Percentage with subsequent TB among individuals with QFT conversion during follow-up by months since QFT conversion.

Fig D. Percentage with subsequent TB among individuals with a substantial CFP10 increase (≥ 103.39 pg/ml) during follow-up by months since CFP10 increase. (PDF)

Acknowledgments

We thank translator A Kuitse (Tasiilaq, Greenland) and nurse M Weissmann (Tasiilaq, Greenland), for help in conducting the fieldwork. Furthermore, we would like to thank MD HCF Sorensen, Nurse J Sommer and laboratory technician H Due-Boye (Tasiilaq hospital, Greenland) for assorted fieldwork assistance. We would like to thank Statistician M Andersson for generating data from the national registers, technicians V Skov, P Grenés and KB Carlsen for valuable advice and help in conducting the laboratory work, and D Menzies and C Wejse for valuable review of the manuscript preceding submission. We also thank The National Board of Health (Nuuk, Greenland) for generating TB notification data. Finally, we would like to thank all the participants in the Tasiilaq region and all the staff at the Tasiilaq hospital, health clinics and schools, Tasiilaq region, Greenland.

Author Contributions

Conceptualization: SWM BS MM AK STH EMA LJD JW.

Data curation: LJD JW SWM.

Formal analysis: LJD JW SWM BS MM.

Funding acquisition: SWM BS MM.

Investigation: SWM BS STH EMA AK IR.

Methodology: SWM JW BS MM STH EMA LJD AK IR.

Project administration: SWM.

Resources: MM JW AK EMA STH IR SWM.

Software: LJD JW SWM.

Supervision: SWM BS MM EMA STH AK JW.

Visualization: SWM LJD JW BS MM.

Writing – original draft: SWM.

Writing – review & editing: SWM BS LJD EMA STH AK IR JW MM.

References

1. Lönnroth K, Castro KG, Chakaya JM, Chauhan LS, Floyd K, Glaziou P, et al. Tuberculosis control and elimination 2010–50: cure, care, and social development. *Lancet*. 375: 1814–1829. [https://doi.org/10.1016/S0140-6736\(10\)60483-7](https://doi.org/10.1016/S0140-6736(10)60483-7) PMID: 20488524
2. WHO. Global tuberculosis report. 2014.

3. Nunes-Alves C, Booty MG, Carpenter SM, Jayaraman P, Rothchild AC, Behar SM. In search of a new paradigm for protective immunity to TB. *Nat Rev Microbiol*. Nature Publishing Group; 2014; 12: 289–299. <https://doi.org/10.1038/nrmicro3230> PMID: 24590243
4. Getahun H, Matteelli A, Chaisson RE, Raviglione M. Latent *Mycobacterium tuberculosis* infection. *N Engl J Med*. 2015; 372: 2127–35. <https://doi.org/10.1056/NEJMra1405427> PMID: 26017823
5. Geluk A, van Meijgaarden KE, Joosten S a., Commandeur S, Ottenhoff THM. Innovative strategies to identify *M. tuberculosis* antigens and epitopes using genome-wide analyses. *Front Immunol*. 2014; 5: 1–8.
6. Ottenhoff THM, Kaufmann SHE. Vaccines against tuberculosis: Where are we and where do we need to go? *PLoS Pathog*. 2012; 8: e1002607. <https://doi.org/10.1371/journal.ppat.1002607> PMID: 22589713
7. Aagaard C, Hoang T, Dietrich J, Cardona P-J, Izzo A, Dolganov G, et al. A multistage tuberculosis vaccine that confers efficient protection before and after exposure. *Nat Med*. Nature Publishing Group; 2011; 17: 189–94. <https://doi.org/10.1038/nm.2285> PMID: 21258338
8. Kaufmann SHE, McMichael AJ. Annulling a dangerous liaison: vaccination strategies against AIDS and tuberculosis. *Nat Med*. 2005; 11: S33–S44. <https://doi.org/10.1038/nm1221> PMID: 15812488
9. Demissie A, Leyten EMS, Abebe M, Wassie L, Aseffa A, Abate G, et al. Recognition of stage-specific mycobacterial antigens differentiates between acute and latent infections with *Mycobacterium tuberculosis*. *Clin Vaccine Immunol*. 2006; 13: 179–186. <https://doi.org/10.1128/CVI.13.2.179-186.2006> PMID: 16467323
10. Cole ST, Brosch R, Parkhill J, Garnier T, Churcher C, Harris D, et al. Deciphering the biology of *Mycobacterium tuberculosis* from the complete genome sequence. *Nature*. 1998; 393: 537–544. <https://doi.org/10.1038/31159> PMID: 9634230
11. Kaufmann SH. Is the development of a new tuberculosis vaccine possible? *Nat Med*. 2000; 6: 955–960. <https://doi.org/10.1038/79631> PMID: 10973302
12. Hawn TR, Day TA, Scriba TJ, Hatherill M, Hanekom WA, Evans TG, et al. Tuberculosis Vaccines and Prevention of Infection. *Microbiol Mol Biol Rev*. 2014; 78: 650–671. <https://doi.org/10.1128/MMBR.00021-14> PMID: 25428938
13. Huygen K. The immunodominant T-cell epitopes of the mycolyl-transferases of the antigen 85 complex of *M. tuberculosis*. *Front Immunol*. 2014; 5: 1–11.
14. Pai M, Deninger CM, Kik S V, Rangaka MX, Zwering A, Oxlade O, et al. Gamma interferon release assays for detection of *Mycobacterium tuberculosis* infection. *Clin Microbiol Rev*. 2014; 27: 3–20. <https://doi.org/10.1128/CMR.00034-13> PMID: 24396134
15. Betts JC, Lukey PT, Robb LC, McAdam R a, Duncan K. Evaluation of a nutrient starvation model of *Mycobacterium tuberculosis* persistence by gene and protein expression profiling. *Mol Microbiol*. 2002; 43: 717–731. <https://doi.org/10.1046/j.1365-2958.2002.02779.x> PMID: 11929527
16. Michelsen SW, Soborg B, Agger EM, Diaz LJ, Hoff ST, Koch A, et al. Host immunity to *Mycobacterium tuberculosis* and risk of tuberculosis: a longitudinal study among Greenlanders. *Vaccine*. 2016; 34: 5975–5983. <http://dx.doi.org/10.1016/j.vaccine.2016.09.047> PMID: 27997344
17. Statistics Greenland. Statistikbanken [Internet]. 2015. <http://www.stat.gl/default.asp?lang=da>
18. Michelsen SW, Soborg B, Koch A, Carstensen L, Hoff ST, Agger EM, et al. The effectiveness of BCG vaccination in preventing *Mycobacterium tuberculosis* infection and disease in Greenland. *Thorax*. 2014; 69: 851–6. <https://doi.org/10.1136/thoraxjnl-2014-205688> PMID: 24969643
19. Pedersen CB, Gøtzsche H, Møller JO, Mortensen PB. The Danish Civil Registration System. A cohort of eight million persons. *Dan Med Bull*. 2006; 53: 441–449. <https://doi.org/10.1177/1403494810387965> PMID: 17150149
20. The National Board of Health in Greenland. National TB strategy 2012–2016 [Internet]. 2012. http://dk.vintage.nanoq.gl/Service/Publikationer/Udgivelser/2011/-/media/Naalakkersuisut/Peqqinnissaq/Tuberkulose_strategi/NationalTBstrategi201216_final_dk_web.aspx
21. Andersen P, Munk ME, Pollock JM, Doherty TM. Specific immune-based diagnosis of tuberculosis. *Lancet*. 2000; 356: 1099–1104. Available: <http://www.ncbi.nlm.nih.gov/pubmed/11009160> PMID: 11009160
22. Cellestis a QIAGEN Company. QuantiFERON®-TB Gold (QFT®) ELISA Package Insert. 2013; 1–36. <http://cellestis.com/irm/content/PI/QFT/2PK/UK.pdf>
23. Demster A, Laird N, Rubin D. Maximum Likelihood from Incomplete Data via the EM Algorithm. *J R Stat Soc*. 1977; 39: 1–38.
24. Benaglia T, Chauveau D, Hunter D, Young D. Mixtools: An R package for analyzing finite mixture models. *J Stat Softw*. 2009; 32: 1–29.

25. Jasenosky LD, Scriba TJ, Hanekom WA, Goldfeld AE. T cells and adaptive immunity to *Mycobacterium tuberculosis* in humans. *Immunol Rev.* 2015; 264: 74–87. <https://doi.org/10.1111/imr.12274> PMID: 25703553
26. Kremer L, Nampoothiri KM, Lesjean S, Dover LG, Graham S, Betts J, et al. Biochemical Characterization of Acyl Carrier Protein (AcpM) and Malonyl-CoA: AcpM Transacylase (mtFabD), Two Major Components of *Mycobacterium tuberculosis* Fatty Acid Synthase II. *J Biol Chem.* 2001; 276: 27967–27974. <https://doi.org/10.1074/jbc.M103687200> PMID: 11373295
27. Chen JM, Boy-Röttger S, Dhar N, Sweeney N, Buxton RS, Pojer F, et al. EspD is critical for the virulence-mediating ESX-1 secretion system in *Mycobacterium tuberculosis*. *J Bacteriol.* 2012; 194: 884–893. <https://doi.org/10.1128/JB.06417-11> PMID: 22155774
28. Brodin P, Majlessi L, Marsollier L, De Jonge MI, Bottai D, Demangel C, et al. Dissection of ESAT-6 system 1 of *Mycobacterium tuberculosis* and impact on immunogenicity and virulence. *Infect Immun.* 2006; 74: 88–98. <https://doi.org/10.1128/IAI.74.1.88-98.2006> PMID: 16368961
29. Bahk YY, Kim SA, Kim J-S, Euh H-J, Bai G-H, Cho S-N, et al. Antigens secreted from *Mycobacterium tuberculosis*: identification by proteomics approach and test for diagnostic marker. *Proteomics.* 2004; 4: 3299–3307. <https://doi.org/10.1002/pmic.200400980> PMID: 15378731
30. Tiwari B, Soory A, Raghunand TR. An immunomodulatory role for the *Mycobacterium tuberculosis* region of difference 1 locus proteins PE35 (Rv3872) and PPE68 (Rv3873). *FEBS J.* 2014; 35: 1556–1570. <https://doi.org/10.1111/febs.12723> PMID: 24467650
31. Mukherjee P, Dutta M, Datta P, Dasgupta a., Pradhan R, Pradhan M, et al. The RD1-encoded antigen Rv3872 of *Mycobacterium tuberculosis* as a potential candidate for serodiagnosis of tuberculosis. *Clin Microbiol Infect. European Society of Clinical Infectious Diseases;* 2007; 13: 146–152. <https://doi.org/10.1111/j.1469-0691.2006.01660.x> PMID: 17328726
32. Raghavan S, Manzanillo P, Chan K, Dovey C, Cox JS. Secreted transcription factor controls *Mycobacterium tuberculosis* virulence. *Nature.* 2008; 454: 717–721. <https://doi.org/10.1038/nature07219> PMID: 18685700
33. Owens CP. Characterization of heme ligation properties of Rv0203, a secreted heme binding protein involved in *Mycobacterium tuberculosis* heme uptake. *Biochemistry.* 2012; 29: 997–1003. <https://doi.org/10.1016/j.biotechadv.2011.08.021> Secreted
34. Amor YB, Shashkina E, Johnson S, Bifani PJ, Kurepina N, Kreiswirth B, et al. Immunological characterization of novel secreted antigens of *Mycobacterium tuberculosis*. *Scand J Immunol.* 2005; 61: 139–146. <https://doi.org/10.1111/j.0300-9475.2005.01557.x> PMID: 15683450
35. Bhat KH, Ahmed A, Kumar S, Sharma P, Mukhopadhyay S. Role of PPE18 Protein in Intracellular Survival and Pathogenicity of *Mycobacterium tuberculosis* in Mice. *PLoS One.* 2012; 7: 1–9. <https://doi.org/10.1371/journal.pone.0052601> PMID: 23300718
36. Legesse M, Ameni G, Medhin G, Mamo G, Franken KLMC, Ottenhoff THM, et al. IgA Response to ESAT-6/CFP-10 and Rv2031 Antigens Varies in Patients With Culture-Confirmed Pulmonary Tuberculosis, Healthy *Mycobacterium tuberculosis*-Infected and Non-Infected Individuals in a Tuberculosis Endemic Setting, Ethiopia. *Scand J Immunol.* 2013; 78: 266–274. <https://doi.org/10.1111/sji.12080> PMID: 23713613
37. Ravindran R, Krishnan V V., Dhawan R, Wunderlich ML, Lerche NW, Flynn JL, et al. Plasma antibody profiles in non-human primate tuberculosis. *J Med Primatol.* 2014; 43: 59–71. <https://doi.org/10.1111/jmp.12097> PMID: 24446897
38. Dillon DC, Alderson MR, Day CH, Lewinsohn DM, Coler R, Bement T, et al. Molecular characterization and human T-cell responses to a member of a novel *Mycobacterium tuberculosis* mtb39 gene family. *Infect Immun.* 1999; 67: 2941–2950. PMID: 10338503
39. Torres M, Garcia-Garcia L, Cruz-Hervert P, Guio H, Carranza C, Ferreyra-Reyes L. Effect of isoniazid on antigen-specific interferon- γ secretion in latent tuberculosis. *Eur Respir J.* 2015; 45: 473–82. <https://doi.org/10.1183/09031936.00123314> PMID: 25359354
40. Belay M, Legesse M, Mihret A, Bekele Y, Ottenhoff THM, Franken KLMC, et al. Pro- and Anti-Inflammatory Cytokines against Rv2031 Are Elevated during Latent Tuberculosis: A Study in Cohorts of Tuberculosis Patients, Household Contacts and Community Controls in an Endemic Setting. *PLoS One.* 2015; 10: e0124134. <https://doi.org/10.1371/journal.pone.0124134> PMID: 25897840
41. Leroux-Roels I, Forgue S, De Boever F, Clement F, Demoitie M-A, Mettens P, et al. Improved CD4⁺ T cell responses to *Mycobacterium tuberculosis* in PPD-negative adults by M72/AS01 as compared to the M72/AS02 and Mtb72F/AS02 tuberculosis candidate vaccine formulations: a randomized trial. *Vaccine.* 2013; 31: 2196–206. <https://doi.org/10.1016/j.vaccine.2012.05.035> PMID: 22643213
42. Andrews JR, Hatherill M, Mahomed H, Hanekom W a., Campo M, Hawn TR, et al. The Dynamics of QuantiFERON-TB Gold In-Tube Conversion and Reversion in a Cohort of South African Adolescents.

- Am J Respir Crit Care Med. 2015; 191: 584–591. <https://doi.org/10.1164/rccm.201409-1704OC> PMID: 25562578
43. Lin PL, Rodgers M, Smith L, Bigbee M, Myers A, Bigbee C, et al. Quantitative comparison of active and latent tuberculosis in the cynomolgus macaque model. *Infect Immun*. 2009; 77: 4631–4642. <https://doi.org/10.1128/IAI.00592-09> PMID: 19620341
 44. Flynn JL, Gideon HP, Mattila JT, Lin PL. Immunology studies in non-human primate models of tuberculosis. *Immunol Rev*. 2015; 264: 60–73. <https://doi.org/10.1111/imr.12258> PMID: 25703552
 45. Modlin RL, Bloom BR. TB or Not TB: That Is No Longer the Question. *Sci Transl Med*. 2013; 5: 1–15. <https://doi.org/10.1126/scitranslmed.3007402> PMID: 24285487
 46. Chegou NN, Heyckendorf J, Walzl G, Lange C, Ruhwald M. Beyond the IFN- γ horizon: Biomarkers for immunodiagnosis of infection with *Mycobacterium tuberculosis*. *Eur Respir J*. 2014; 43: 1472–1486. <https://doi.org/10.1183/09031936.00151413> PMID: 24311770
 47. Agger EM, Andersen P. Tuberculosis subunit vaccine development: on the role of interferon-gamma. *Vaccine*. 2001; 19: 2298–2302. [https://doi.org/10.1016/S0264-410X\(00\)00519-3](https://doi.org/10.1016/S0264-410X(00)00519-3) PMID: 11257351
 48. Lindestam Arlehamn CS, Gerasimova A, Mele F, Henderson R, Swann J, Greenbaum J a., et al. Memory T Cells in Latent *Mycobacterium tuberculosis* Infection Are Directed against Three Antigenic Islands and Largely Contained in a CXCR3+CCR6+ Th1 Subset. *PLoS Pathog*. 2013; 9. <https://doi.org/10.1371/journal.ppat.1003130> PMID: 23358848
 49. Marín ND, París SC, Rojas M, García LF. Functional profile of CD4+ and CD8+ T cells in latently infected individuals and patients with active TB. *Tuberculosis (Edinb)*. Elsevier Ltd; 2013; 93: 155–66. <https://doi.org/10.1016/j.tube.2012.12.002> PMID: 23332142
 50. Flynn JL. An essential role for interferon gamma in resistance to *Mycobacterium tuberculosis* infection. *J Exp Med*. 1993; 178: 2249–2254. <https://doi.org/10.1084/jem.178.6.2249> PMID: 7504064
 51. Millington K a, Gooding S, Hinks TSC, Reynolds DJM, Lalvani A. *Mycobacterium tuberculosis*-specific cellular immune profiles suggest bacillary persistence decades after spontaneous cure in untreated tuberculosis. *J Infect Dis*. 2010; 202: 1685–9. <https://doi.org/10.1086/656772> PMID: 20958211
 52. Penn-Nicholson A, Nemes E, Hanekom W a., Hatherill M, Scriba T.J. *Mycobacterium tuberculosis*-specific CD4 T cells are the principal source of IFN- γ in QuantiFERON assays in healthy persons. *Tuberculosis*. Elsevier Ltd; 2015; 6–7. <https://doi.org/10.1016/j.tube.2015.03.002> PMID: 25802032