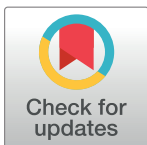


CORRECTION

Correction: Depletion of Regulatory T Cells Induces High Numbers of Dendritic Cells and Unmasks a Subset of Anti-Tumour CD8⁺CD11c⁺ PD-1^{lo} Effector T Cells

Nicolas Goudin, Pascal Chappert, Jérôme Mégret, David-Alexandre Gross, Benedita Rocha, Orly Azogui

[Fig 5](#) appears incorrectly in the published article. Please see the correct [Fig 5](#) and its caption [here](#).



OPEN ACCESS

Citation: Goudin N, Chappert P, Mégret J, Gross D-A, Rocha B, Azogui O (2017) Correction: Depletion of Regulatory T Cells Induces High Numbers of Dendritic Cells and Unmasks a Subset of Anti-Tumour CD8⁺CD11c⁺ PD-1^{lo} Effector T Cells. PLoS ONE 12(1): e0171373. doi:10.1371/journal.pone.0171373

Published: January 27, 2017

Copyright: © 2017 Goudin et al. This is an open access article distributed under the terms of the [Creative Commons Attribution License](#), which permits unrestricted use, distribution, and reproduction in any medium, provided the original author and source are credited.

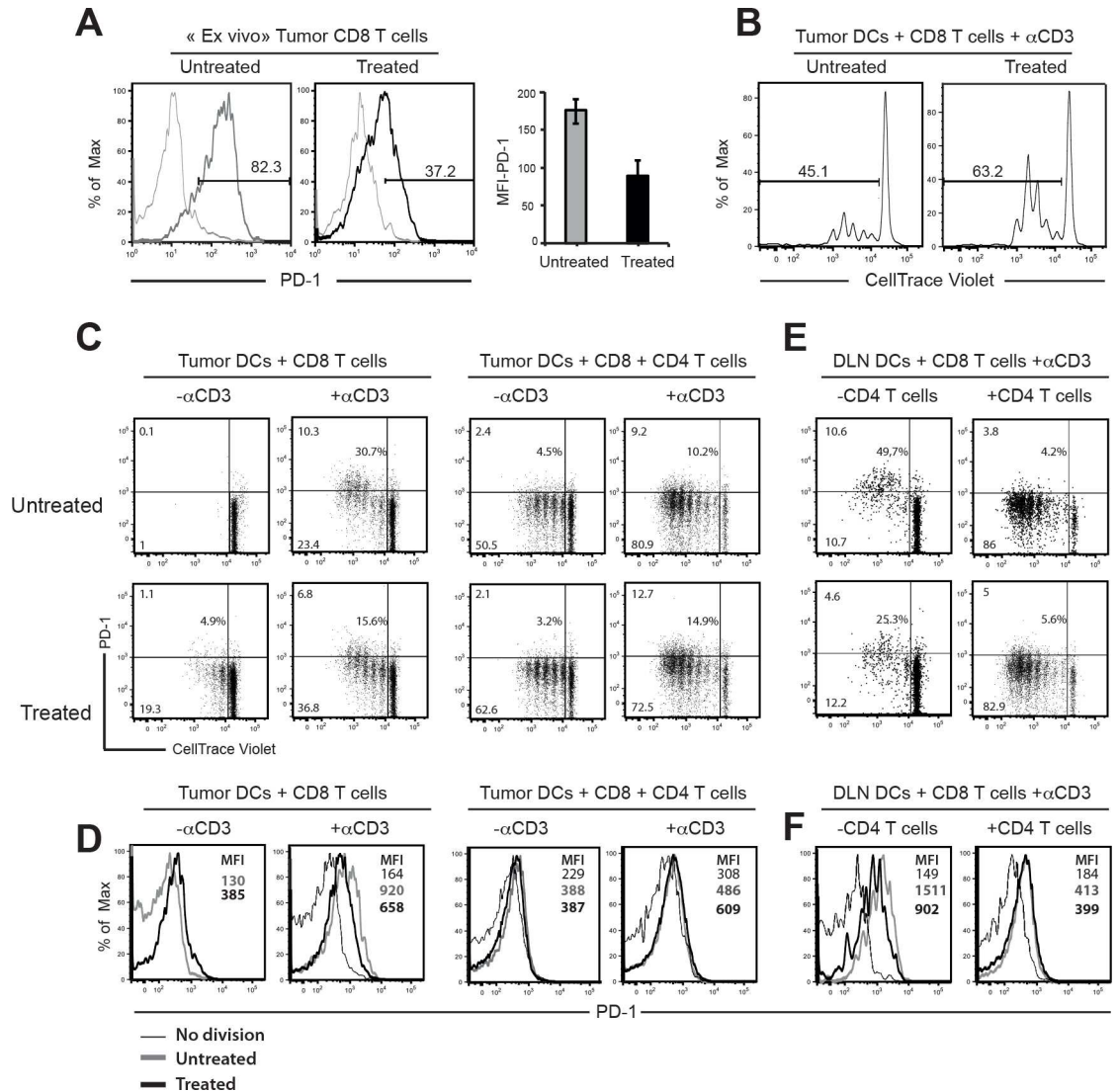


Fig 5. DCs from PC61-depleted mice and CD4 T cells reduce the percentages of CD8 T cells expressing high level of PD-1. (A) Histograms show cell surface expression of PD-1 on infiltrating CD8 T cells from treated and untreated tumours resected at day 14 (Left) and mean Fluorescence Intensity (MFI) of PD-1 in each group (Right). (B) CD11c^{hi}MHC II^{hi} tumour DCs were sorted from treated and untreated mice and cultured 3 days with naïve CD8 T cells labelled with CellTrace violet and 0.1 μ g/ml of anti-CD3 mAb. (C,D) Flow cytometry analysing the expression of PD-1 on dividing cells. CD11c^{hi}MHC II^{hi} DCs from Tumours (C) and CD11c^{hi} DCs from DLNs (D) were purified from untreated and PC61-treated mice and co-cultured 3 days with CellTrace violet-labelled CD8 T cells and in the presence or not with anti-CD3 mAb or CD4 T cells. Percentages of cells expressing PD-1 are represented in the middle of the graphs. (E,F) Histograms represent the level of PD-1 expression gated on all dividing cells according to indicated cultures. Results represent two independent experiments.

doi:10.1371/journal.pone.0171373.g001

Reference

- Goudin N, Chappert P, Mégrét J, Gross D-A, Rocha B, Azogui O (2016) Depletion of Regulatory T Cells Induces High Numbers of Dendritic Cells and Unmasks a Subset of Anti-Tumour CD8⁺CD11c⁺ PD-1^{lo} Effector T Cells. PLoS ONE 11(6): e0157822. doi:10.1371/journal.pone.0157822 PMID: 27341421