

CORRECTION

# Correction: Based on Molecular Profiling of Gene Expression, Palmoplantar Pustulosis and Palmoplantar Pustular Psoriasis Are Highly Related Diseases that Appear to Be Distinct from Psoriasis Vulgaris

Robert Bissonnette, Mayte Suárez-Fariñas, Xuan Li, Kathleen M. Bonifacio, Carrie Brodmerkel, Judilyn Fuentes-Duculan, James G. Krueger

During submission, an incorrect [Fig 5](#) showing heat map results instead of immunohistochemistry results was erroneously inserted. Please view the correct [Fig 5](#) here.

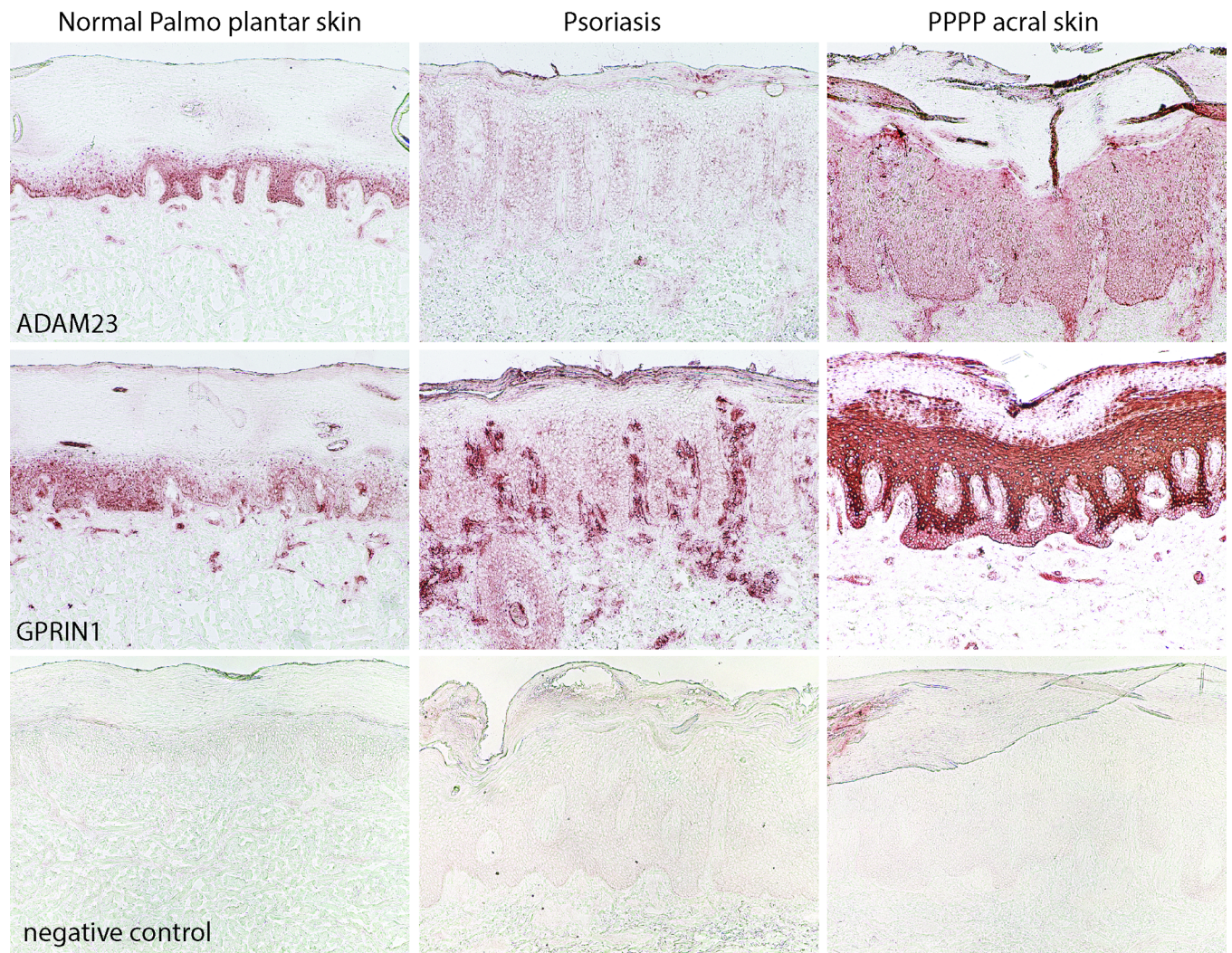


 OPEN ACCESS

**Citation:** Bissonnette R, Suárez-Fariñas M, Li X, Bonifacio KM, Brodmerkel C, Fuentes-Duculan J, et al. (2016) Correction: Based on Molecular Profiling of Gene Expression, Palmoplantar Pustulosis and Palmoplantar Pustular Psoriasis Are Highly Related Diseases that Appear to Be Distinct from Psoriasis Vulgaris. PLoS ONE 11(6): e0158190. doi:10.1371/journal.pone.0158190

**Published:** June 21, 2016

**Copyright:** © 2016 Bissonnette et al. This is an open access article distributed under the terms of the [Creative Commons Attribution License](#), which permits unrestricted use, distribution, and reproduction in any medium, provided the original author and source are credited.



**Fig 5. Representative images of ADAM23 and GPRIN1 localization in normal acral skin, psoriasis vulgaris and PPPP as shown by immunohistochemistry.** There is an increase in expression of ADAM23 and GPRIN1 in PPPP as compared to psoriasis vulgaris and normal acral skin. There is absence of staining with a non-specific isotype antibody (negative control).

doi:10.1371/journal.pone.0158190.g001

## Reference

1. Bissonnette R, Suárez-Fariñas M, Li X, Bonifacio KM, Brodmerkel C, Fuentes-Duculan J, et al. (2016) Based on Molecular Profiling of Gene Expression, Palmoplantar Pustulosis and Palmoplantar Pustular Psoriasis Are Highly Related Diseases that Appear to Be Distinct from Psoriasis Vulgaris. *PLoS ONE* 11(5): e0155215. doi:[10.1371/journal.pone.0155215](https://doi.org/10.1371/journal.pone.0155215) PMID: [27152848](https://pubmed.ncbi.nlm.nih.gov/27152848/)