

RESEARCH ARTICLE

Liver Fat Content Is Associated with Elevated Serum Uric Acid in the Chinese Middle-Aged and Elderly Populations: Shanghai Changfeng Study

Huandong Lin^{1,2*}, Qian Li^{1*}, Xiaojing Liu¹, Hui Ma³, Mingfeng Xia¹, Dan Wang¹, Xiaoming Li¹, Jiong Wu⁴, Naiqing Zhao⁵, Baishen Pan⁴, Xin Gao^{1,2*}

1 Department of Endocrinology and Metabolism, Zhongshan Hospital, Fudan University, Shanghai, China, **2** Research center on aging and medicine, Fudan University, Shanghai, China, **3** Department of Geriatrics, Zhongshan Hospital, Fudan University, Shanghai, China, **4** Department of Laboratory Medicine, Zhongshan Hospital, Fudan University, Shanghai, China, **5** Department of Biostatistics, School of Public Health, Fudan University, Shanghai, China

* These authors contributed equally to this work.

* gao.xin@zs-hospital.sh.cn; zhongshan_endo@126.com



OPEN ACCESS

Citation: Lin H, Li Q, Liu X, Ma H, Xia M, Wang D, et al. (2015) Liver Fat Content Is Associated with Elevated Serum Uric Acid in the Chinese Middle-Aged and Elderly Populations: Shanghai Changfeng Study. PLoS ONE 10(10): e0140379. doi:10.1371/journal.pone.0140379

Editor: Birke Bartosch, Inserm, U1052, UMR 5286, FRANCE

Received: May 27, 2015

Accepted: September 24, 2015

Published: October 16, 2015

Copyright: © 2015 Lin et al. This is an open access article distributed under the terms of the [Creative Commons Attribution License](https://creativecommons.org/licenses/by/4.0/), which permits unrestricted use, distribution, and reproduction in any medium, provided the original author and source are credited.

Data Availability Statement: The restrictions prohibit the authors from making the minimal data set publicly available. The data will be available upon request from Xin Gao at zhongshan_endo@126.com. Our study was supported from several national and local government research funds. According to the relevant policy of data management, we were forbidden by Data Management Committee of Shanghai Changfeng Study (the agency who provided the underlying data) to provide our data to third parties.

Abstract

Background and Aims

Although many studies have indicated a relationship between nonalcoholic fatty liver disease (NAFLD) and hyperuricemia, a few studies specifically examining the effects of the severity of liver fat content (LFC) on serum uric acid (SUA) and the presence of hyperuricemia because of the limitation of the examination methods for NAFLD. In this study, we investigate the relationship between the NAFLD and SUA levels in the Chinese population using standardized quantitative ultrasound.

Methods

A community-based study was conducted from May 2010 to December 2012. A total of 4,305 people aged 45 years and above without excessive drinking were enrolled. A standard interview and anthropometric and laboratory blood parameters were collected for each person. The standardized ultrasound hepatic/renal ratio and hepatic attenuation rate was used to quantify LFC.

Results

The prevalence of NAFLD and hyperuricemia was 33.1% and 17.1%, respectively. A total of 23.5% of the NAFLD subjects had hyperuricemia, and their SUA was higher than that of non-NAFLD subjects (327.2±76.8 vs 301.9±77.4 μmol/L, P<0.001). The LFC was positively correlated with SUA (r = 0.130, P<0.001) and an independent factor for SUA (standardized β = 0.054, P<0.001). The OR for the presence of hyperuricemia was 1.175 (95% CI 1.048–

Funding: This work was supported by grants from the Major State Basic Research Development Program of China (2012CB524906 to Gao X.; http://www.973.gov.cn/Default_3.aspx), the National Natural Science Foundation of China (81270933 to Gao X.), and the Shanghai Municipal Health Bureau Foundation (12GWZX0103 and 2013ZYJB0802 to Gao X.). All sponsors state that they have no conflicts of interest.

Competing Interests: The authors have declared that no competing interests exist

Abbreviations: NAFLD, Nonalcoholic fatty liver disease; LFC, Liver fat content; SUA, serum uric acid; NASH, Non-alcoholic steatohepatitis; WC, waist circumference; HC, Hip circumference; BMI, Body mass index; WHR, Waist-to-hip ratio; BP, Blood pressure; FBG, Fasting blood glucose; TC, Total cholesterol; TGs, Triglycerides; HDL-C, High-density lipoprotein-cholesterol; LDL-C, Low-density lipoprotein-cholesterol; ALT, Alanine aminotransferase; AST, Aspartate aminotransferase; GGT, γ -glutamyltransferase; ALP, Alkaline phosphatase; BU, Blood urea; Cr, Creatinine; UA, Uric acid; MDRD, Modification of Diet in Renal Disease; 2hBG, 2-hour blood glucose; HPLC, High performance liquid chromatography; NGSP, National Glycated Haemoglobin Standardization Program.

1.318; $P < 0.001$) with a 1 SD increase in the log LFC. LFC greater than 10% was related to elevated SUA and an increased presence of hyperuricemia.

Conclusions

LFC accumulation was associated with an increase in the prevalence of hyperuricemia and elevated SUA in our community-based population. LFC greater than 10% is related to the risk for hyperuricemia.

Introduction

Uric acid is the final end product of purine metabolism in humans. It is well known that hyperuricemia is a causative factor of gout. However, in recent years, there has been a renewed interest in hyperuricemia because of its association with a number of metabolic disorders other than gout e.g., obesity, hypertension, glucose intolerance, metabolic syndrome, atherosclerosis and cardiovascular disease [1,2,3,4,5,6].

Non-alcoholic fatty liver disease (NAFLD) is defined as the presence of a significant amount of fat accumulation in the liver and includes simple steatosis, non-alcoholic steatohepatitis (NASH) and cirrhosis. The worldwide prevalence of NAFLD in the general population is estimated to be approximately 20–30% in Western countries and 5–18% in Asia [7]. Recently, the prevalence of NAFLD has increased in China with the improvement of life conditions [8]. The association between NAFLD and serum uric acid level has been well documented. However, most studies have explored the impact of elevated serum uric acid on the risk of NAFLD occurrence because NAFLD is typically diagnosed by characteristic echo patterns upon ultrasonic examination, which is limited by interobserver and intraobserver variability [9] and poor sensitivity for detecting mild hepatic steatosis [10], and it is ultimately unable to provide an accurate measurement of LFC. Although some researchers have used liver biopsy to evaluate the impact of the severity of NAFLD on serum uric acid [11], because it is an invasive examination, it is limited for use in wide application in clinical practice. A standardized ultrasound hepatic/renal ratio and hepatic attenuation rate used to quantify LFC was established by our group [12] and has provided a manner to explore the impact of the accumulation of liver fat on serum uric acid in a large-scale population study.

Therefore, in this study, we investigated the relationship between NAFLD and the SUA level in the Chinese population and explored the effects of the severity of LFC on serum uric acid and the presence of hyperuricemia.

Materials and Methods

Study design and population

The participants in our study are from the Shanghai Changfeng Study, which took place from May 2010 to December 2012. The Shanghai Changfeng Study, which was approved by the Ethical Committee of Shanghai Zhongshan Hospital, Fudan University and was conducted in accordance with the guidelines of Declaration of Helsinki, is a community-based prospective cohort study of multiple chronic non-infectious diseases in middle-aged and elderly people [13]. Written informed consent was obtained from all study subjects whose deserved rights and interests were monitored by the ethical committee. A total of 5,103 consecutive participants (2,151 men and 2,952 women) aged 45 years and above were enrolled in our study. We

excluded 798 subjects (707 men and 91 women) because of excessive drinking (over 140 g for males and over 70 g for females each week). As a result, 4,305 subjects (1,444 men and 2861 women) were included in the final analysis.

Data Collection

Letters were sent to participants with instructions asking them to not alter their diet or physical activity for at least 3 days prior to examination. On the examination day, a questionnaire was administered by a trained researcher to collect information for each participant regarding their lifestyle and medical history. Then, the body weight, height, waist circumference (WC, midway between the lowest rib margin and iliac crest) and hip circumference (HC, widest level over the greater trochanters) of each participant clothed in a light gown was measured. The body mass index (BMI) was calculated as the weight divided by height squared (kg/m^2). The waist-to-hip ratio (WHR) was calculated as the waist circumference divided by the hip circumference. The resting blood pressure (BP) was measured three times with an electronic blood pressure monitor (OMRON Model HEM-752 FUZZY, Omron Co., Dalian, China), and then the average was calculated.

Blood samples were collected after a fasting period of at least 10 hours overnight. Fasting blood glucose (FBG), total cholesterol (TC), triglycerides (TGs), high-density lipoprotein-cholesterol (HDL-C), low-density lipoprotein-cholesterol (LDL-C), alanine aminotransferase (ALT), aspartate aminotransferase (AST), γ -glutamyltransferase (GGT), alkaline phosphatase (ALP), blood urea (BU), creatinine (Cr), and uric acid (UA) were measured with an automated bio-analyzer (HITACHI 7600, Tokyo, Japan). The eGFR was calculated using the Modification of Diet in Renal Disease (MDRD) study formula[14] as follows: $186 \times [\text{serum creatinine (mg/dl)}]^{-1.154} \times (\text{age})^{-0.203} \times [0.742 \text{ (if female)}]$. The 2-hour blood glucose (2hBG) was measured after a 75 g oral glucose tolerance test, and HbA_{1C} was measured by high performance liquid chromatography (HPLC) (BIO-RAD II TURBO), which was standardized to the National Glycated Haemoglobin Standardization Program (NGSP).

Hepatic ultrasonography scanning was performed on all subjects by an experienced radiologist who was blinded to the subjects' medical information using a GE LOGIQ P5 scanner (GE Healthcare, Milwaukee, USA) with a 4-MHz probe. The interobserver agreement for US hepatic/renal ratio and US hepatic attenuation rate was excellent (ICC = 0.956 and ICC = 0.942, respectively). We measured LFC according to the procedure and formula described elsewhere [12], and we used 9.15% as a cut-off value for diagnosing liver steatosis. Hyperuricemia was defined as a serum UA level $\geq 420 \mu\text{mol/L}$ in men and $\geq 360 \mu\text{mol/L}$ in women.

Statistical analysis

All statistical analyses were performed using SPSS software version 16.0 (SPSS, Chicago, IL, USA). Continuous variables were presented as the means \pm SD with the exception of skewed variables, which were presented as medians with the interquartile range (25–75%) provided in parentheses.

The one-way analysis of variance t test or Mann-Whitney U test was used for comparisons of continuous data among groups, whereas the Chi-squared test was used for comparisons of categorical variables. Pearson or spearman analyses were used to determine the association between serum UA level and other clinical parameters (logarithmic transformed for skewed variables, expressed as LG). Stepwise logistic regression analysis (forward; Wald) was used to evaluate independent risk factors for hyperuricemia. Multiple linear regression analysis was

used to determine the association between the serum UA level and other parameters. All statistical tests were two tailed, and p-values less than 0.05 were considered significant.

Results

Characteristics of the study participants

The characteristics of the participants are shown in [Table 1](#). In our study population, the prevalence of NAFLD and hyperuricemia was 33.1% and 17.1%, respectively. The prevalence of hyperuricemia was higher in patients with NAFLD than that in those without NAFLD (23.5%

Table 1. Clinical characteristics of the participants.

	All (n = 4,305)		Male (n = 1,444)		Female (n = 2,861)	
	Non-NAFLD	NAFLD	Non-NAFLD	NAFLD	Non-NAFLD	NAFLD
n (%)	2,881 (66.9)	1,424 (33.1)	992 (68.7)	452 (31.3)	1,889 (66.0)	972 (34.0)
Age (y)	64.0±9.9	62.7±9.0***	66.0±9.8	63.2±9.2***	62.9±9.7	62.5±8.8
BMI (kg/m ²)	23.3±3.1	25.6±3.2***	23.6±3.0	25.8±2.8***	23.1±3.2	25.6±3.4***
WC (cm)	81.3±9.3	87.6±9.0***	84.2±8.7	91.3±8.3***	79.7±9.2	85.8±8.9***
WHR	0.89±0.08	0.92±0.07***	0.92±0.09	0.95±0.06***	0.88±0.08	0.90±0.07***
SBP (mmHg)	132.8±19.4	136.8±18.7***	134.7±18.4	136.7±17.7	131.9±19.8	136.8±19.2***
DBP (mmHg)	74.1±9.8	77.4±10.0***	76.0±10.2	79.3±9.6***	73.1±9.4	76.6±10.1***
TC (mmol/L)	5.06±0.91	5.19±0.98***	4.68±0.85	4.83±0.89**	5.26±0.87	5.36±0.97*
TG (mmol/L)	1.50±0.91	2.16±1.62***	1.52±0.98	2.09±1.39***	1.49±0.87	2.19±1.71***
HDL-C (mmol/L)	1.50±0.39	1.35±0.33***	1.32±0.32	1.19±0.27***	1.56±0.39	1.42±0.33***
LDL-C (mmol/L)	2.89±0.78	2.92±0.84	2.69±0.73	2.73±0.78	3.00±0.78	3.00±0.85
FBG (mmol/L)	5.42±1.29	5.89±1.70***	5.58±1.57	6.00±1.75***	5.34±1.10	5.83±1.67***
2hBG (mmol/L)	7.14±3.00	8.64±3.58***	7.41±3.07	8.99±3.76***	7.01±2.97	8.47±3.49***
HbA _{1c} (%)	5.77±0.81	6.07±1.02***	5.85±1.00	6.11±1.11***	5.73±0.68	6.05±0.98***
ALT (U/L)	15 (11–19)	18 (14–26)***	16 (12–21)	20 (15–29) *	14 (11–19)	18(13–25)***
AST (U/L)	20 (17–23)	21 (18–25)***	20 (17–23)	21 (18–25)***	20 (17–23)	21 (18–24)***
GGT (U/L)	20 (16–28)	26 (20–38)***	23 (18–32)	31 (22–41) ***	19 (15–26)	24 (19–35)***
ALP (U/L)	71 (61–84)	73 (62–87) ***	69 (59–81)	71 (59–84) *	72 (61–85)	75 (63–89) **
LFC (%)	3.4(1.4–5.6)	14.8 (11.7–18.7)***	3.1(1.1–5.2)	14.8 (11.6–19.4)**	3.6(1.5–5.8)	14.8 (11.7–18.5)***
BU (mmol/L)	5.4±1.5	5.3±1.3	5.7±1.5	5.5±1.3	5.3±1.4	5.2±1.3
Cr (umol/L)	68.9±21.5	66.5±16.9***	82.7±20.4	80.6±16.3	61.7±18.3	60.0±12.5***
UA (umol/L)	301.9±77.4	327.2±76.8***	342.8±79.7	362.5±75.2***	280.5±66.8	310.8±71.9***
eGFR (ml/min 1.73 m ²)	93.4±19.9	96.1±20.0***	90.3±19.2	93.1±19.1*	95.0±20.0	97.4±20.2**
Hyperuricemia (%)	13.9	23.5***	17.2	23.9**	12.2	23.3***
Drugs-taking [§] (%)	0.4%	0.6%	1.1%	1.5%	0.1%	0.1%

Data are expressed as the means±SE, percentages or medians (25th to 75th percentiles). Compared with Non-NAFLD group

*: P<0.05

** : P<0.01

***: P<0.001.

NAFLD: nonalcoholic fatty liver disease; BMI: body mass index; WC: waist circumference; WHR: waist-to-hip ratio; SBP: systolic blood pressure; DBP: diastolic blood pressure; TC: total cholesterol; TG: triglycerides; HDL-C: high-density lipoprotein-cholesterol; LDL-C: low-density lipoprotein-cholesterol; FBG: fasting blood glucose; 2hBG: 2-hour blood glucose; ALT: alanine aminotransferase; AST: aspartate aminotransferase; GGT: γ-glutamyltransferase; ALP: alkaline phosphatase; LFC: liver fat content; BU: blood urea; UA: uric acid; eGFR: estimated glomerular filtration rate.

§: Rate of drugs-taking for hyperuricemia or gout.

doi:10.1371/journal.pone.0140379.t001

Table 2. Correlation coefficients between serum uric acid and all related clinical parameters, including LFC.

	Total (n = 4305)		Male (n = 1444)		Female (n = 2861)	
	r	P	r	P	r	P
Age	0.175	<0.001	0.084	0.001	0.178	<0.001
BMI	0.269	<0.001	0.215	<0.001	0.299	<0.001
WC	0.324	<0.001	0.198	<0.001	0.308	<0.001
WHR	0.248	<0.001	0.090	0.001	0.237	<0.001
SBP	0.197	<0.001	0.144	<0.001	0.222	<0.001
DBP	0.147	<0.001	0.114	<0.001	0.108	<0.001
TC	-0.022	0.148	0.086	0.001	0.091	<0.001
TG	0.204	<0.001	0.206	<0.001	0.232	<0.001
HDL-C	-0.291	<0.001	-0.162	<0.001	-0.222	<0.001
LDL-C	-0.013	0.383	0.032	0.225	0.065	0.001
FBG	0.033	0.033	-0.132	<0.001	0.109	<0.001
2hBG	0.157	<0.001	0.031	0.277	0.213	<0.001
HbA _{1c}	0.026	0.106	-0.156	<0.001	0.131	<0.001
LG_ALT	0.174	<0.001	0.141	<0.001	0.157	<0.001
LG_AST	0.124	<0.001	0.139	<0.001	0.127	<0.001
LG_ALP	-0.007	0.658	-0.011	0.669	0.046	0.014
LG_GGT	0.256	<0.001	0.204	<0.001	0.227	<0.001
LG_LFC	0.130	<0.001	0.107	<0.001	0.192	<0.001
BU	0.251	<0.001	0.188	<0.001	0.250	<0.001
Cr	0.423	<0.001	0.350	<0.001	0.278	<0.001
eGFR	-0.363	<0.001	-0.382	<0.001	-0.332	<0.001

LFC: liver fat content; BMI: body mass index; WC: waist circumference; WHR: waist-to-hip ratio; SBP: systolic blood pressure; DBP: diastolic blood pressure; TC: total cholesterol; TG: triglycerides; HDL-C: high-density lipoprotein-cholesterol; LDL-C: low-density lipoprotein-cholesterol; FBG: fasting blood glucose; 2hBG: 2-hour blood glucose; LG: logarithmic transformed; ALT: alanine aminotransferase; AST: aspartate aminotransferase; GGT: γ -glutamyltransferase; ALP: alkaline phosphatase; BU: blood urea; eGFR: estimated glomerular filtration rate.

doi:10.1371/journal.pone.0140379.t002

vs 13.9%, $P < 0.001$). Patients with NAFLD were younger, had heavier body weights, and higher blood pressures and glucose levels than those without NAFLD. The total cholesterol, triglyceride and transaminase levels were higher, whereas HDL-C was lower in NAFLD patients than in those without NAFLD. Moreover, the level of serum UA was higher in NAFLD than in non-NAFLD participants (327.2 ± 76.8 vs 301.9 ± 77.4 $\mu\text{mol/L}$, $P < 0.001$).

Relationship between LFC and level of serum uric acid

Univariate correlation analysis demonstrated that the level of serum uric acid significantly and positively correlated with age, BMI, WC, WHR, BP, TG, FBG, 2hBG, ALT, AST, GGT, LFC, BU and Cr, and it significantly and negatively correlated with HDL-C and eGFR (Table 2). Multiple stepwise regression analysis showed that LFC was an independent factor of the SUA level (Table 3). In addition, the SUA concentration increased with increases in LFC. When the LFC was greater than 10%, the SUA was significantly higher than LFC <5% (Table 4).

Relationship between LFC and hyperuricemia

The prevalence of hyperuricemia increased with each additional 5% of stratified LFC (Fig 1). There was no significant difference between LFC <5% and LFC 5~10%, but the prevalence of hyperuricemia significantly increased when the LFC was greater than 10% compared with

Table 3. Factors associated with the level of serum uric acid.

	β	95% CI	SE	Standardized β	P
Cr	1.761	1.625~1.897	0.069	0.384	<0.001
WC	0.942	0.578~1.307	0.186	0.116	<0.001
LG_GGT	37.187	26.706~47.669	5.346	0.111	<0.001
TG	5.289	3.385~7.193	0.971	0.083	<0.001
BU	4.736	3.050~6.422	0.860	0.080	<0.001
HDL-C	-17.221	-23.620~-10.821	3.264	-0.083	<0.001
SBP	0.274	0.157~0.391	0.060	0.066	<0.001
LG_LFC	9.156	4.333~13.978	2.460	0.054	<0.001
BMI	1.459	0.423~2.496	0.528	0.062	0.006
LG_AST	25.210	6.229~44.191	9.681	0.039	0.009
FPG	-3.809	-6.368~-1.251	1.305	-0.049	0.004
2hBG	0.923	0.113~1.733	0.413	0.039	0.025

Dependent variable: serum uric acid. Independent variables: age, BMI, WC, WHR, SBP, DBP, FBG, 2hBG, LG_ALT, LG_AST, LG_GGT, TG, HDL-C, BU, Cr, eGFR and LG_LFC. Adjusted for drugs-taking for hyperuricemia or gout.

Cr: creatinine; WC: waist circumference; LG: logarithmic transformed; GGT: γ -glutamyltransferase; TG: triglycerides; BU: blood urea; HDL-C: high-density lipoprotein-cholesterol; SBP: systolic blood pressure; LFC: liver fat content; BMI: body mass index; AST: aspartate aminotransferase; FBG: fasting blood glucose; 2hBG: 2-hour blood glucose; BMI: body mass index; WHR: waist-to-hip ratio; DBP: diastolic blood pressure; ALT: alanine aminotransferase; eGFR: estimated glomerular filtration rate.

doi:10.1371/journal.pone.0140379.t003

LFC<5%, and there was no difference in this correlation for either males or females. Compared with the LFC<5% group, the OR (95% CI) for the presence of hyperuricemia associated with the LFC 10~15%, 15~20% and greater than 20% groups was 1.138 (1.085–1.194), 1.148 (1.083–1.218) and 1.130 (1.055–1.209), respectively, for the total population, and 1.163 (1.099–1.231), 1.168 (1.091–1.251) and 1.162 (1.067–1.266), respectively, for females alone (Table 5). Multiple logistic regression analysis demonstrated that LFC was an independent factor for hyperuricemia in the total and female population. For a 1 SD increase in the Log LFC, the risk for the occurrence of hyperuricemia was 1.175 (95% CI 1.048–1.318) for the total population and 1.210 (95% CI 1.027–1.426) for females alone. (Fig 2).

Discussion

In our study, we found that 23.5% of people with NAFLD had hyperuricemia; LFC was an independent factor of hyperuricemia and positively correlated with serum uric acid for both

Table 4. Levels of serum uric acid with increases in LFC.

LFC	Total (n = 4,305)		Male (n = 1,444)		Female (n = 2,861)	
	n	UA (μ mol/L)	n	UA (μ mol/L)	n	UA (μ mol/L)
<5%	2003	301.4 \pm 78.3	719	340.5 \pm 80.4	1284	279.5 \pm 67.8
5~10%	993	303.2 \pm 75.1	310	347.4 \pm 77.1	683	283.1 \pm 64.9
10~15%	628	326.0 \pm 77.5*	196	364.9 \pm 75.2*	432	308.4 \pm 72.0*
15~20%	406	329.6 \pm 77.1*	119	366.6 \pm 75.9*	287	314.3 \pm 72.3*
> = 20%	275	336.3 \pm 73.9*	100	361.8 \pm 74.6*	175	321.7 \pm 69.7*
P		<0.001		<0.001		<0.001

LFC: liver fat content; UA: serum uric acid

*: compared with LFC<5%, P<0.05.

doi:10.1371/journal.pone.0140379.t004

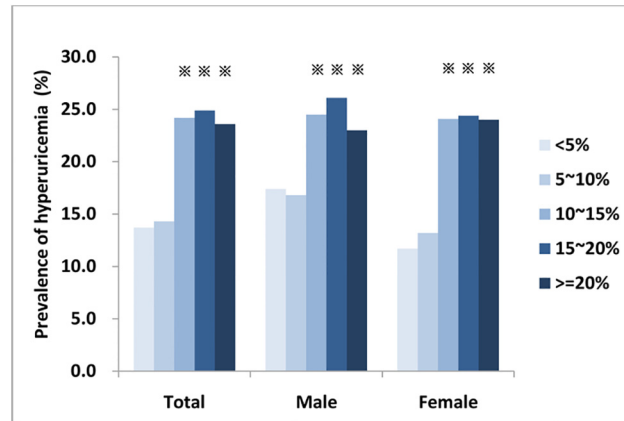


Fig 1. Prevalence of hyperuricemia with increases in the LFC. In total, the prevalence of hyperuricemia was 13.7%, 14.3%, 24.2%, 24.9% and 23.6%, respectively with each additional 5% of stratified LFC from <5% to >= 20%. In male, the prevalence was 17.4%, 16.8%, 24.5%, 26.1% and 23.0%, respectively; in female, the prevalence was 11.7%, 13.2%, 24.1%, 24.4% and 24.0%, respectively. ※: compared with LFC<5%, P<0.05

doi:10.1371/journal.pone.0140379.g001

men and women. The prevalence of hyperuricemia and serum uric acid increased with increases in LFC, and a LFC greater than 10% had a high risk for the occurrence of hyperuricemia.

The prevalence of hyperuricemia in the general population was 8.38~14.71% [15,16]. However, the prevalence of hyperuricemia in patients with NAFLD was 20~33.4% [11,17,18], which was higher than that of the general population. We also found that 23.5% of people with NAFLD had hyperuricemia. Our results are similar to those of previous studies and indicate that hepatic steatosis has a close relationship with elevated serum uric acid. However, these previous studies have used conventional ultrasound [16], which cannot relate the severity of hepatic steatosis to the level of serum uric acid or biopsy [11,17], an invasive examination, which cannot be widely used for clinical diagnoses or therapeutic follow-up. Thus, our study using semi-quantitative ultrasonography try to determine the LFC, as the severity of NAFLD, with hyperuricemia or serum uric acid.

In our study, we found that serum uric acid was positively correlated with LFC, and there was no difference in this correlation for either males or females. Although the risk of the presence of hyperuricemia increased with a 1 SD increase in log LFC, multiple regression analysis confirmed that LFC was an independent factor for serum uric acid level but for only female subjects. Moreover, we found that a mild increase in LFC (less than 10%) did not increase

Table 5. ORs for hyperuricemia with 5% increases in the LFC.

	Total (n = 4,305)		Male (n = 1,444)		Female (n = 2,861)	
	OR	95%CI	OR	95%CI	OR	95%CI
<5%	1.000		1.000		1.000	
5~10%	1.007	0.976–1.038	0.993	0.935–1.054	1.017	0.982–1.054
10~15%	1.138	1.085–1.194	1.094	1.003–1.193	1.163	1.099–1.231
15~20%	1.148	1.083–1.218	1.117	0.999–1.249	1.168	1.091–1.251
>= 20%	1.130	1.055–1.209	1.073	0.959–1.200	1.162	1.067–1.266

LFC: liver fat content; OR: odds ratio; CI: confidence interval.

doi:10.1371/journal.pone.0140379.t005

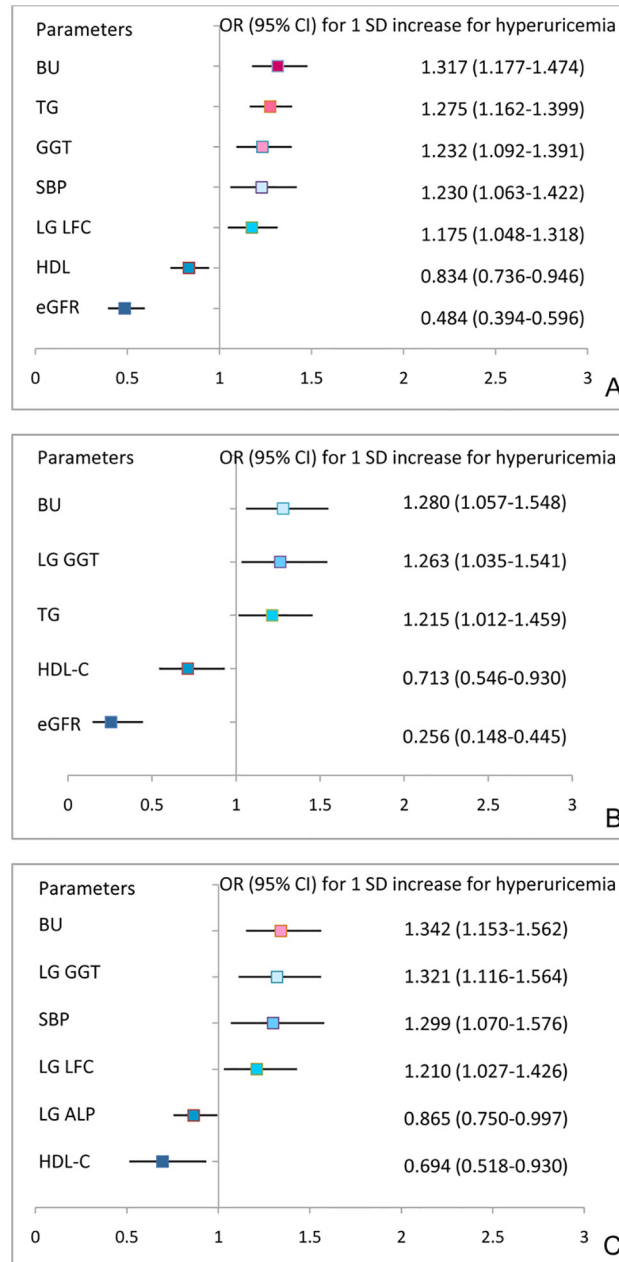


Fig 2. ORs for 1 SD increases in variables with the prevalence of hyperuricemia from multiple logistic regression analysis. (A) The total study population, including the variables gender, age, BMI, WC, WHR, SBP, DBP, TG, HDL-C, FPG, 2hPG, ALT, AST, GGT, LFC, BU, Cr, and eGFR, which were significantly correlated with serum uric acid in bivariate correlate analysis. (B) The male subset, including the variables age, BMI, WC, WHR, SBP, DBP, TC, TG, HDL-C, FPG, HbA_{1c}, ALT, AST, GGT, LFC, BU, Cr and eGFR, which were significantly correlated with serum uric acid in bivariate correlation analysis. (C) The female subset, including the variables age, BMI, WC, WHR, SBP, DBP, TC, TG, HDL-C, LDL-C, FPG, 2hPG, HbA_{1c}, ALT, AST, ALP, GGT, LFC, BU, Cr and eGFR, which were significantly correlated with serum uric acid in bivariate correlation analysis.

doi:10.1371/journal.pone.0140379.g002

serum uric acid and the presence of hyperuricemia. However, when the LFC was greater than 10%, there was a significant increase despite the level of serum uric acid or the presence of hyperuricemia. Furthermore, there was no further increase in serum uric acid and presence of

hyperuricemia with increased LFC. These results suggest that the LFC exceed 10% might be the threshold for the presence of hyperuricemia. Our previous studies indicated that the early phase of beta-cell function was deteriorated as the LFC accumulated to 10% [19,20], and the participants with LFC higher than 10% had higher odds ratios of impaired glucose regulation as compared with those with LFC below 10% after adjustment for all confounding risk factors [21]. So hyperinsulinaemia or insulin resistance induced by beta-cell dysfunction might increase serum uric acid through increased uric acid production and decreased renal excretion of uric acid [22]. Furthermore, considering the dual role of uric acid as an anti-oxidant and pro-oxidant [23], we speculate that uric acid may change its role from an anti-oxidant to a pro-oxidant when the LFC reaches 10%.

NAFLD, including simple steatosis, NASH and cirrhosis [24], is the result of hepatic fat accumulation in patients without a history of excessive alcohol consumption [25]. Recent studies have indicated that NAFLD is linked to increased risk for cardiovascular disease [26]. Similarly, hyperuricemia, previously considered the cause for gout, was also recently found to be linked to cardiovascular disease [4]. After the first case-controlled study describing an association between NAFLD and serum uric acid by Lonardo et al. [27], several studies have reported a close relationship between NAFLD and uric acid [11,15,16,17,18]. However, the mechanisms by which NAFLD associates with serum uric acid remain unclear. Most studies have considered that the increased prevalence of NAFLD is due to elevated serum uric acid [16]. Elevated serum uric acid at baseline increases the risk for NAFLD [28,29]. However, some studies have indicated that the accumulation of hepatic fat or steatohepatitis induces increased serum uric acid [11,30]. Hyperinsulinemia or insulin resistance induced by hepatic steatosis increases the production of uric acid, reduces uric acid excretion [3,22] and eventually results in hyperuricemia. Elevated serum uric acid may be a marker of endogenous inflammatory cytokines responding to hepatocyte damage [31].

In conclusion, the clinical implications of our study are as follows: 1) we found that the accumulation of LFC is associated with an increased prevalence of hyperuricemia and elevated serum uric acid in the general population, and 2) there is a threshold value for the LFC associated with the risk of hyperuricemia or elevated serum uric acid. We should be concerned with people who have greater than 10% LFC and metabolic abnormalities. The limitations of our study are as follows: 1) this was a study of the middle-aged and elderly population, we could not select gold standard, such as liver biopsy or magnetic resonance spectroscopy, for diagnosing NAFLD and we also could not distinguished patients with NASH and non-NASH which required to be diagnosed by liver biopsy as gold standard; 2) we could not consider the role of insulin resistance in the relationship between NAFLD and hyperuricemia; and 3) our study was a cross-section study, which could not demonstrate a clear causal relationship between NAFLD and hyperuricemia. Further prospective studies are needed to eliminate the causal relationship with these two diseases.

Acknowledgments

We are grateful to Ling Shi, Jianhua Sheng, and Xusheng Chen of Shanghai Changfeng Community Healthcare Center and the working staff of the resident committees of all of the sub-communities of the Changfeng community for their kind help in providing a location and recruiting residents for our study.

Author Contributions

Conceived and designed the experiments: XG. Performed the experiments: HDL QL XJL HM MFX DW XML. Analyzed the data: HDL NQZ. Wrote the paper: HDL QL. Performed laboratory examination: JW BSP.

References

1. Grayson PC, Kim SY, LaValley M, Choi HK (2011) Hyperuricemia and incident hypertension: a systematic review and meta-analysis. *Arthritis Care Res (Hoboken)* 63: 102–110.
2. Wang J, Qin T, Chen J, Li Y, Wang L, et al. (2014) Hyperuricemia and risk of incident hypertension: a systematic review and meta-analysis of observational studies. *PLoS One* 9: e114259. doi: [10.1371/journal.pone.0114259](https://doi.org/10.1371/journal.pone.0114259) PMID: [25437867](https://pubmed.ncbi.nlm.nih.gov/25437867/)
3. Li C, Hsieh MC, Chang SJ (2013) Metabolic syndrome, diabetes, and hyperuricemia. *Curr Opin Rheumatol* 25: 210–216. doi: [10.1097/BOR.0b013e32835d951e](https://doi.org/10.1097/BOR.0b013e32835d951e) PMID: [23370374](https://pubmed.ncbi.nlm.nih.gov/23370374/)
4. Grassi D, Ferri L, Desideri G, Di Giosia P, Cheli P, et al. (2013) Chronic hyperuricemia, uric acid deposit and cardiovascular risk. *Curr Pharm Des* 19: 2432–2438. PMID: [23173592](https://pubmed.ncbi.nlm.nih.gov/23173592/)
5. Katsiki N, Papanas N, Fonseca VA, Maltezos E, Mikhailidis DP (2013) Uric acid and diabetes: Is there a link? *Curr Pharm Des* 19: 4930–4937. PMID: [23278493](https://pubmed.ncbi.nlm.nih.gov/23278493/)
6. Richette P, Perez-Ruiz F (2013) Serum uric acid and metabolic risk. *Curr Med Res Opin* 29 Suppl 3: 9–15. doi: [10.1185/03007995.2013.790801](https://doi.org/10.1185/03007995.2013.790801) PMID: [23611367](https://pubmed.ncbi.nlm.nih.gov/23611367/)
7. Masarone M, Federico A, Abenavoli L, Loguercio C, Persico M (2014) Non alcoholic fatty liver: epidemiology and natural history. *Rev Recent Clin Trials* 9: 126–133. PMID: [25514916](https://pubmed.ncbi.nlm.nih.gov/25514916/)
8. Li Z, Xue J, Chen P, Chen L, Yan S, et al. (2014) Prevalence of nonalcoholic fatty liver disease in mainland of China: a meta-analysis of published studies. *J Gastroenterol Hepatol* 29: 42–51. doi: [10.1111/jgh.12428](https://doi.org/10.1111/jgh.12428) PMID: [24219010](https://pubmed.ncbi.nlm.nih.gov/24219010/)
9. Strauss S, Gavish E, Gottlieb P, Katsnelson L (2007) Interobserver and intraobserver variability in the sonographic assessment of fatty liver. *AJR Am J Roentgenol* 189: W320–323. PMID: [18029843](https://pubmed.ncbi.nlm.nih.gov/18029843/)
10. Dasarathy S, Dasarathy J, Khyami A, Joseph R, Lopez R, et al. (2009) Validity of real time ultrasound in the diagnosis of hepatic steatosis: a prospective study. *J Hepatol* 51: 1061–1067. doi: [10.1016/j.jhep.2009.09.001](https://doi.org/10.1016/j.jhep.2009.09.001) PMID: [19846234](https://pubmed.ncbi.nlm.nih.gov/19846234/)
11. Sertoglu E, Ercin CN, Celebi G, Gurel H, Kayadibi H, et al. (2014) The relationship of serum uric acid with non-alcoholic fatty liver disease. *Clin Biochem* 47: 383–388. doi: [10.1016/j.clinbiochem.2014.01.029](https://doi.org/10.1016/j.clinbiochem.2014.01.029) PMID: [24525254](https://pubmed.ncbi.nlm.nih.gov/24525254/)
12. Xia MF, Yan HM, He WY, Li XM, Li CL, et al. (2012) Standardized ultrasound hepatic/renal ratio and hepatic attenuation rate to quantify liver fat content: an improvement method. *Obesity (Silver Spring)* 20: 444–452.
13. Gao X, Hofman A, Hu Y, Lin H, Zhu C, et al. (2010) The Shanghai Changfeng Study: a community-based prospective cohort study of chronic diseases among middle-aged and elderly: objectives and design. *Eur J Epidemiol* 25: 885–893. doi: [10.1007/s10654-010-9525-6](https://doi.org/10.1007/s10654-010-9525-6) PMID: [21120588](https://pubmed.ncbi.nlm.nih.gov/21120588/)
14. Levey AS, Bosch JP, Lewis JB, Greene T, Rogers N, et al. (1999) A more accurate method to estimate glomerular filtration rate from serum creatinine: a new prediction equation. Modification of Diet in Renal Disease Study Group. *Ann Intern Med* 130: 461–470. PMID: [10075613](https://pubmed.ncbi.nlm.nih.gov/10075613/)
15. Cai W, Song JM, Zhang B, Sun YP, Yao H, et al. (2014) The prevalence of nonalcoholic fatty liver disease and relationship with serum uric acid level in Uyghur population. *ScientificWorldJournal* 2014: 393628. doi: [10.1155/2014/393628](https://doi.org/10.1155/2014/393628) PMID: [24516367](https://pubmed.ncbi.nlm.nih.gov/24516367/)
16. Li Y, Xu C, Yu C, Xu L, Miao M (2009) Association of serum uric acid level with non-alcoholic fatty liver disease: a cross-sectional study. *J Hepatol* 50: 1029–1034. doi: [10.1016/j.jhep.2008.11.021](https://doi.org/10.1016/j.jhep.2008.11.021) PMID: [19299029](https://pubmed.ncbi.nlm.nih.gov/19299029/)
17. Petta S, Camma C, Cabibi D, Di Marco V, Craxi A (2011) Hyperuricemia is associated with histological liver damage in patients with non-alcoholic fatty liver disease. *Aliment Pharmacol Ther* 34: 757–766. doi: [10.1111/j.1365-2036.2011.04788.x](https://doi.org/10.1111/j.1365-2036.2011.04788.x) PMID: [21790685](https://pubmed.ncbi.nlm.nih.gov/21790685/)
18. Cai W, Wu X, Zhang B, Miao L, Sun YP, et al. (2013) Serum uric acid levels and non-alcoholic fatty liver disease in Uyghur and Han ethnic groups in northwestern China. *Arq Bras Endocrinol Metabol* 57: 617–622. PMID: [24343630](https://pubmed.ncbi.nlm.nih.gov/24343630/)
19. Yan H, Gao X, Liu M, Gu Q, Gao J (2007) Changes of β -cell function and insulin sensitivity in subjects with non-alcoholic fatty liver disease and normal glucose regulation. *Chin J Endocrinol Metab* 23: 12–15.
20. Bian H, Lin H, Rao S, Yao X, Zeng M, et al. (2010) Association of liver fat content with insulin resistance and islet β cell function in individuals with various statuses of glucose metabolism. *Chin J Endocrinol Metab* 26: 535–540.
21. Li X, Xia M, Ma H, Hu Y, Yan H, et al. (2013) Liver fat content, evaluated through semi-quantitative ultrasound measurement, is associated with impaired glucose profiles: a community-based study in Chinese. *PLoS One* 8: e65210. doi: [10.1371/journal.pone.0065210](https://doi.org/10.1371/journal.pone.0065210) PMID: [23843938](https://pubmed.ncbi.nlm.nih.gov/23843938/)

22. Modan M, Halkin H, Karasik A, Lusky A (1987) Elevated serum uric acid—a facet of hyperinsulinaemia. *Diabetologia* 30: 713–718. PMID: [3322912](#)
23. Kang DH, Ha SK (2014) Uric Acid Puzzle: Dual Role as Anti-oxidant and Pro-oxidant. *Electrolyte Blood Press* 12: 1–6. doi: [10.5049/EBP.2014.12.1.1](#) PMID: [25061467](#)
24. Sanyal AJ (2002) AGA technical review on nonalcoholic fatty liver disease. *Gastroenterology* 123: 1705–1725. PMID: [12404245](#)
25. Day CP, Saksena S (2002) Non-alcoholic steatohepatitis: definitions and pathogenesis. *J Gastroenterol Hepatol* 17 Suppl 3: S377–384. PMID: [12472967](#)
26. Targher G, Day CP, Bonora E (2010) Risk of cardiovascular disease in patients with nonalcoholic fatty liver disease. *N Engl J Med* 363: 1341–1350. doi: [10.1056/NEJMra0912063](#) PMID: [20879883](#)
27. Lonardo A, Loria P, Leonardi F, Borsatti A, Neri P, et al. (2002) Fasting insulin and uric acid levels but not indices of iron metabolism are independent predictors of non-alcoholic fatty liver disease. A case-control study. *Dig Liver Dis* 34: 204–211. PMID: [11990393](#)
28. Lee JW, Cho YK, Ryan M, Kim H, Lee SW, et al. (2010) Serum uric acid as a predictor for the development of nonalcoholic fatty liver disease in apparently healthy subjects: a 5-year retrospective cohort study. *Gut Liver* 4: 378–383. doi: [10.5009/gnl.2010.4.3.378](#) PMID: [20981217](#)
29. Xu C, Yu C, Xu L, Miao M, Li Y (2010) High serum uric acid increases the risk for nonalcoholic fatty liver disease: a prospective observational study. *PLoS One* 5: e11578. doi: [10.1371/journal.pone.0011578](#) PMID: [20644649](#)
30. Xu C, Wan X, Xu L, Weng H, Yan M, et al. (2015) Xanthine oxidase in non-alcoholic fatty liver disease and hyperuricemia: One stone hits two birds. *J Hepatol* 62: 1412–1419. doi: [10.1016/j.jhep.2015.01.019](#) PMID: [25623823](#)
31. Billiet L, Doaty S, Katz JD, Velasquez MT (2014) Review of hyperuricemia as new marker for metabolic syndrome. *ISRN Rheumatol* 2014: 852954. doi: [10.1155/2014/852954](#) PMID: [24693449](#)