

RESEARCH ARTICLE

# *Bacillus cereus* ATCC 14579 RpoN (Sigma 54) Is a Pleiotropic Regulator of Growth, Carbohydrate Metabolism, Motility, Biofilm Formation and Toxin Production

Hasmik Hayrapetyan<sup>1,2</sup>, Marcel Tempelaars<sup>1,2</sup>, Masja Nierop Groot<sup>2,3</sup>, Tjakko Abee<sup>1,2\*</sup>

**1** Laboratory of Food Microbiology, Bornse Weilanden 9, 6708 WG Wageningen University, Wageningen, The Netherlands, **2** Top Institute of Food and Nutrition (TIFN), Nieuwe Kanaal 9A, 6709 PA, Wageningen, The Netherlands, **3** Food and Biobased research, Wageningen UR, Bornse Weilanden 9, 6708 WG, Wageningen, The Netherlands

\* [tjakko.abee@wur.nl](mailto:tjakko.abee@wur.nl)



OPEN ACCESS

**Citation:** Hayrapetyan H, Tempelaars M, Nierop Groot M, Abee T (2015) *Bacillus cereus* ATCC 14579 RpoN (Sigma 54) Is a Pleiotropic Regulator of Growth, Carbohydrate Metabolism, Motility, Biofilm Formation and Toxin Production. PLoS ONE 10(8): e0134872. doi:10.1371/journal.pone.0134872

**Editor:** Adam Driks, Loyola University Chicago, UNITED STATES

**Received:** February 24, 2015

**Accepted:** July 14, 2015

**Published:** August 4, 2015

**Copyright:** © 2015 Hayrapetyan et al. This is an open access article distributed under the terms of the [Creative Commons Attribution License](http://creativecommons.org/licenses/by/4.0/), which permits unrestricted use, distribution, and reproduction in any medium, provided the original author and source are credited.

**Data Availability Statement:** Microarray raw and processed data is deposited in the GEO database (<http://www.ncbi.nlm.nih.gov/geo/>) under accession number GSE65894.

**Funding:** The project is funded by TI Food and Nutrition, a public-private partnership on precompetitive research in food and nutrition. The public partners are responsible for the study design, data collection and analysis, decision to publish, and preparation of the manuscript. The private partners have contributed to the project through regular discussion.

## Abstract

Sigma 54 is a transcriptional regulator predicted to play a role in physical interaction of bacteria with their environment, including virulence and biofilm formation. In order to study the role of Sigma 54 in *Bacillus cereus*, a comparative transcriptome and phenotypic study was performed using *B. cereus* ATCC 14579 WT, a markerless *rpoN* deletion mutant, and its complemented strain. The mutant was impaired in many different cellular functions including low temperature and anaerobic growth, carbohydrate metabolism, sporulation and toxin production. Additionally, the mutant showed lack of motility and biofilm formation at air-liquid interphase, and this correlated with absence of flagella, as flagella staining showed only WT and complemented strain to be highly flagellated. Comparative transcriptome analysis of cells harvested at selected time points during growth in aerated and static conditions in BHI revealed large differences in gene expression associated with loss of phenotypes, including significant down regulation of genes in the mutant encoding enzymes involved in degradation of branched chain amino acids, carbohydrate transport and metabolism, flagella synthesis and virulence factors. Our study provides evidence for a pleiotropic role of Sigma 54 in *B. cereus* supporting its adaptive response and survival in a range of conditions and environments.

## Introduction

Microorganisms may encounter many different environments during their lifecycle and rapid adaptation to these specific conditions requires tailored regulatory mechanisms. As part of such a mechanism, alternative sigma factors regulate the onset and expression level of a subset of genes at a given physiological state of the cell. There are different types of sigma factors in bacteria, each of them regulating a specific response, such as Sigma B regulating gene expression in response to a range of stresses including heat, low temperature and acid in *Bacillus*

**Competing Interests:** The project is funded by TI Food and Nutrition, a public—private partnership on precompetitive research in food and nutrition. The public partners are responsible for the study design, data collection and analysis, decision to publish, and preparation of the manuscript. The private partners have contributed to the project through regular discussion. This does not alter the authors' adherence to PLOS ONE policies on sharing data and materials.

*subtilis* and related species [1, 2] and for example Sigma 32 that supports heat shock survival in *Escherichia coli* [3]. The majority of these sigma factors belong to the Sigma 70 family, with Sigma 54 as an exception, and as the only known representative of this class [4]. Sigma 54, encoded by the *rpoN* gene in *B. cereus*, also referred to as SigL in *B. subtilis* [5] and RpoN in *E. coli* [6], is unique among all sigma factors in its structure and the mechanism of action since it needs specific activator proteins called Enhancer Binding Proteins (EBPs) and ATP hydrolysis in order to initiate transcription [7]. Specificity and activity of Sigma 54 dependent transcription is modulated by EBPs which bind to specific enhancer binding sequences and are triggered by different environmental cues [8].

The Sigma 54-controlled functions described for bacterial species are diverse and include nitrogen metabolism [5, 9], motility [10, 11], biofilm formation [12], stress tolerance and resistance to antimicrobials [13, 14], carbohydrate uptake and metabolism [15], and virulence [16]. In *B. subtilis* Sigma 54 (SigL) is known to be involved in regulation of cold shock adaptation [17], degradation of the branched chain amino acids isoleucine and valine [18] and acetoin catabolic pathway [19], whereas in *Bacillus thuringiensis* regulation of the *gab* gene cluster, involved in  $\gamma$ -aminobutyric acid (GABA) shunt which can channel glutamate into the tricarboxylic acid (TCA) cycle has been reported [20, 21]. A recent study showed a role of Sigma 54 in nitrogen utilisation in *B. thuringiensis* and proposed putative regulon members for this sigma factor [22].

A cross-phylum *in silico* analysis by Franke et al. [23] aiming for prediction of Sigma 54 functions based on its genetic context, associated EBP-activators and promoters, and reported phenotypes, revealed a role for Sigma 54 as a modulator of bacterial cell exterior as a unifying theme. This control is executed by regulating the transport and biosynthesis of components involved in the interaction of the cell with its environment, such as the cell wall, flagella, extra-cellular polysaccharides and proteins. For pathogens such as for example *Bacillus cereus*, this may imply a role of this sigma factor in host colonization and biofilm formation [23, 24].

*Bacillus cereus* is a foodborne pathogen that is ubiquitously present in the environment showing high capacity to adapt to different environmental niches. Soil is the main reservoir of *B. cereus* spores and food can serve as a vehicle to transfer them to the host. Apart from food spoilage, this species may cause food poisoning due to production of toxins. The spores of *B. cereus* survive many stresses applied by food producing industries such as heat and disinfectant treatments, making them hard to eliminate as contaminants. Surviving *B. cereus* spores germinate and grow out into vegetative cells, which can also cope with unfavourable conditions, such as anaerobic environment [25, 26], acidic environments [27] or low temperature [28].

The aim of this study was to assess the role of Sigma 54 in *B. cereus* by a comparative transcriptomic and phenotype analysis, using *B. cereus* ATCC 14579 wild type, its marker-less *rpoN* deletion mutant, and a complemented strain under different growth conditions.

Presented data shows that the *B. cereus rpoN* mutant was impaired in many different cellular functions which were correlated with differences in gene expression. This provides evidence for a pleiotropic role of Sigma factor 54 in *B. cereus* supporting adaptive responses and performance of this foodborne pathogen in a range of conditions and environments.

## Materials and Methods

### Strains and culture conditions

*Bacillus cereus* ATCC 14579 wild type (WT), its *rpoN* mutant derivative ( $\Delta rpoN$ ) and complemented strain ( $\Delta rpoN$ -comp) stocks from  $-80^{\circ}\text{C}$  were streaked on BHI (Brain Heart Infusion, Becton Dickinson) plates and incubated for 24 h at  $30^{\circ}\text{C}$ . Single colonies were inoculated into BHI broth and cultivated for 18 h at  $30^{\circ}\text{C}$  with aeration (200rpm). Erythromycin (10  $\mu\text{g/ml}$ ) was added for the *rpoN*-comp strain to agar plates and overnight culture broth.

Occasionally, after prolonged static incubations (>48h) a spontaneous secondary mutant with a more widespread and round colony appeared. To avoid interference of this secondary mutant, incubation times were kept within 48 h and routinely, cultures were screened on plate to confirm presence of a single colony morphology. Interestingly, a similar phenomenon has been described previously for a *Pseudomonas fluorescence rpoN* mutant [29].

## Growth, sporulation and diarrhoeal enterotoxin production

Aerated (200 rpm) and static growth of the strains was monitored at 30°C in 250 ml erlenmeyer flasks filled with 50 ml BHI. Anaerobic cultivation was performed in rubber sealed serum bottles which were flushed with nitrogen for 2 h before inoculation. Nitrogen flushing was repeated for 20 sec. after each sampling point to ensure anaerobic conditions after sampling. Anaerobic cultures were incubated at 200 rpm. At regular time points between 0 and 48 h, samples were taken and the OD at 600 nm was measured.

The number of spores in the aerated culture was determined by plating the samples after heating for 10 min at 80°C on BHI agar plates. Unheated samples were plated for total number of CFUs (spores and vegetative cells).

The diarrhoeal non-haemolytic enterotoxin production was measured using the *Bacillus* Diarrhoeal Enterotoxin Visual Immunoassay kit (TECRA International Pty) following the instructions of the manufacturer. The amount of the toxin was measured in supernatants of the samples taken for RNA isolation for the microarray.

The growth at 12°C was monitored in two different ways, by cultivation in aerated conditions (similar to 30°C) described above and by streaking overnight cultures on a BHI agar plate and incubating at 12°C for up to 12 days.

## Biofilm formation

The biofilm formation by the WT, the *rpoN* mutant and the complemented strain was tested on stainless steel coupons (AISI 304, surface finish 2B) with the size of 22:18 mm, placed vertically in a 12-well plate (Cellstar, suspension culture plate, Greiner). The wells were half filled with 3 ml BHI broth and inoculated with 1.5% overnight culture. Coupons were washed and sterilized in advance as described previously [30]. Biofilms formed on the coupons were visualized by staining in 0.1% crystal violet for 30 min and subsequently washing in demineralized water to remove the excess stain.

## Motility assay and flagella staining

Swimming motility was tested on BHI plates supplemented with 0.3% agar on which 5 µl of overnight culture was spotted in the centre and incubated for 48 h at 30°C.

For flagella staining the procedure described previously [31] was followed. The cells used for flagella staining were taken from the edges of the colonies formed on the above described swimming plates.

## DNA manipulation techniques

Chromosomal DNA was isolated from *B. cereus* using the Wizard Genomic DNA Purification kit (Promega) for sequencing reactions and using InstaGene Matrix (Biorad) for fast colony PCR screening. Plasmid DNA was extracted using QiaPrep spin miniprep columns (Qiagen). Oligonucleotide primers (Table 1) were synthesized by Sigma. PCR amplification for cloning and sequencing was performed using KAPA HiFi Hotstart DNA Polymerase (Kapa Biosystems, Inc. Wilmington) whereas DreamTaq DNA polymerase (Fisher Scientific) was used for

**Table 1. Primers used for *rpoN* mutant construction and complementation, in 5' to 3' orientation. Restriction sites are in bold.**

rpoN-1	AATCT <b>GAATTC</b> ACTGCTGTGCTTTTAT
rpoN-2	TGCA <b>GCGGCCGC</b> CTTCAAATAATCTCCCCTT
rpoN-3	TCTA <b>GCGGCCGC</b> ATAGGTGAAGAAGATGAAAGTTG
rpoN-4	GGCA <b>GTCGAC</b> TCGCTACTAACATGGTCTGGAACA
BC5143compl_F	GCAT <b>TCTAGA</b> ATCCCTCTGGGCGCGTCAAAA
BC5143compl_R	CATC <b>CTGCAG</b> AGTACAACCTTCATCTTCTTACCTAT
BCp0019_F	GAAGGCGATGTTGTAAGAAATGTT
BCp0019_R	TCCGGTGCGTAGCGTGT

doi:10.1371/journal.pone.0134872.t001

control PCR reactions. Restriction enzymes, T4 DNA ligase and FastAP Termosensitive Alkaline Phosphatase were obtained from Fisher Scientific and used according to manufacturer's instructions. Plasmid constructs and *B. cereus* deletion and complementation clones were confirmed by DNA sequencing (Baseclear, Leiden, The Netherlands).

### Deletion mutant construction and complementation

To elucidate the role of *rpoN* in *B. cereus* ATCC14579 an antibiotic marker-free deletion mutant, designated FM145143, was constructed using the temperature-sensitive suicide plasmid pAUL-A [32]. Flanking regions of this gene were amplified from *B. cereus* chromosomal DNA using primers rpoN-1 to rpoN-4 (Table 1) and purified using the MiniElute PCR purification Kit (Qiagen). The PCR products were digested and purified using a MiniElute Reaction Cleanup Kit (Qiagen). The temperature-sensitive suicide plasmid pAUL-A was digested with EcoRI and SalI followed by alkaline dephosphorylation. The treated plasmid was purified using Phenol chloroform extraction and the resulting plasmid backbone ligated with the digested flanking regions, fused in frame by introduction of a NotI site. The ligation mix was introduced into MAX Efficiency *E. coli* DH5 $\alpha$  competent cells (Invitrogen) as described by the manufacturer, plated on LB containing 250  $\mu$ g/ml erythromycin and obtained transformants were checked by PCR and sequencing. The resulting plasmid pAUL- $\Delta$ *rpoN* was transformed into *B. cereus* ATCC 14579 by electroporation (400 $\Omega$ , 25  $\mu$ F, 1.2 kV, 2 mM Gene Pulser Cuvette: BIORAD) and plated on BHI and grown at 30°C in the presence of 10  $\mu$ g/ml erythromycin (E10). pAUL- $\Delta$ *rpoN* integration was achieved by growing the plasmid carrying strain, while shaking, for 16 hours at 42°C in a 250 ml shaking flask containing 50 ml BHI in the presence of E10. A volume of 500  $\mu$ l of this overnight culture was transferred into a new shaking flask containing 50 ml BHI without antibiotics and grown overnight at 30°C, to induce double crossover events. This overnight culture was diluted and subsequently plated on BHI and grown at 37°C. Single colonies were replica plated on BHI with and without E10. PCR analyses and DNA sequencing of E10 sensitive colonies confirmed the correct 1296 bp internal in-frame deletion of *rpoN*.

Sequencing also revealed a point mutation in the *cggR* gene (BC5141) flanking the *rpoN*. The *cggR* gene encodes a repressor of five glycolytic genes downstream of *cggR* [33]. Four of those glycolytic genes (BC5135-5138) were repressed in the mutant compared to the WT during static growth and were unaffected during shaking growth. This effect was relieved in the complemented mutant and suggests that the observed phenotypes could not be ascribed to the point mutation or potential polar effect in flanking genes or other regulatory elements.

Complementation of the  $\Delta$ *rpoN* deletion strain was performed by a low copy number plasmid (approximately 15 copies per cell [34]) carrying the full length *rpoN* gene including 300 bp of its upstream region. This fragment was amplified from chromosomal DNA of the WT strain

using primers BC5143compl\_F and BC5143compl\_R (Table 1) that included a tag with recognition sites for PstI and XbaI restriction enzymes. The plasmid pHT315 [34, 35] and the insert were digested with PstI and XbaI and ligated resulting in complementation vector pHT315\_BC5143compl. This complementation vector was introduced into the *rpoN* deletion strain by electroporation as described above. To maintain the plasmid, the complemented strain was pre-cultured in the presence of E10. During the experiments no antibiotic pressure was used in order to prevent secondary growth effects. Total Viable Count (TVC) plating with and without E10 did not show loss of the complementation vector. The maintenance of pBClin15 in *B. cereus* ATCC14579 and its derivatives was checked using plasmid specific primers BCp0019\_F and BCp0019\_R (Table 1).

### RNA isolation, cDNA synthesis and labelling

RNA was isolated from liquid cultures of the WT, the  $\Delta rpoN$  and  $\Delta rpoN$ -comp strains in BHI grown with aeration and statically. Aerated cultures were sampled at two time points, upon reaching OD (600 nm) values of 0.2 (shaking t1) and 1 (shaking t2), which corresponded to mid-exponential and end-exponential growth phases, respectively. Statically grown cultures were sampled at OD = 0.2 (600 nm) corresponding to mid-exponential growth (static). Cultures were centrifuged in 50 ml Falcon tubes for 1 min at room temperature (11.000 x g). Immediately after centrifugation the pellet was re-suspended in 1 ml TRI reagent (Ambion) by vortexing, snap frozen in liquid nitrogen and stored at -80°C until use. RNA was extracted according to the RNeasy (Qiagen) protocol. Residual DNA was enzymatically removed using the TURBO DNA-free (Ambion) kit following the instructions of the manufacturer. The quality of the extracted RNA was checked by using the Bioanalyzer (Agilent) with the Agilent RNA 6000 Nano kit, according to manufacturer's instructions. Complementary DNA (cDNA) with amino-allyl-labelled dUTP (Ambion) was synthesized from RNA by using Superscript III reverse transcriptase (Invitrogen). Labelling and hybridization were performed as described elsewhere [36]. Two independent biological replicates were hybridized on the arrays with either 2 (WT) or 3 ( $\Delta rpoN$  and  $\Delta rpoN$ -comp) technical replicates for each biological replicate, which were labelled with the swapped dyes (Cy3 and Cy5).

### Microarray design and data analysis

Custom-made array design for *B. cereus* ATCC 14579 was based on the 8 x 15K platform of Agilent Technologies (GEO accession number GPL9493, 3<sup>rd</sup> design) and the genome sequence of *B. cereus* ATCC 14579 (NCBI accession number NC\_004722). Microarrays were scanned with an Agilent G2505C scanner with two different intensities from which the optimal version was used. Image analysis and processing were performed with the Agilent Feature Extraction software (version 10.7.3.1). Transcriptome profiles were normalized using LOWESS normalization [37] as implemented in MicroPreP [38]. The data were corrected for inter-slide differences on the basis of total signal intensity per slide using Postprep [38] and median intensity of the different probes per gene was selected as the gene expression intensity. CyberT software was used to compare the different transcriptomes [39], resulting in gene expression ratios and false discovery rates (FDR) for each gene. The gene was considered significantly differentially expressed when FDR-adjusted p-value was < 0.01 and expression fold change was higher than 3 ( $\log_2$  ratio > 1.58 for up regulation, and < -1.58 for down regulation). To study the effect of the *rpoN* gene deletion in *B. cereus* the transcription profiles of the deletion mutant were compared to the WT. In order to see the effect of complementation, the complemented strain was compared to the WT. The expression of a certain gene was considered to be restored close to the WT level if the expression ratio *rpoN*-comp over WT was smaller than 3 fold and had a

non-significant  $\text{fdr} > 0.01$  value. The subsets of significantly affected genes were analysed for overrepresented KEGG metabolic pathways with the web-based tool for functional analysis of genes FIVA [40]. Microarray raw and processed data is deposited in the GEO database (<http://www.ncbi.nlm.gov/geo/>) under accession number GSE65894.

## Statistical analysis

All described experiments were performed in independent biological triplicates, unless stated otherwise. Presented data in the graphs are the averages of the replicates  $\pm$  the standard deviation. Differences were considered statistically significant if the  $p$  value from student  $t$ -test (MS Excel2010) for two samples with equal variance was  $p < 0.05$ . For the microarray gene expression ratios were considered relevant when the  $\text{fdr} < 0.01$ .

## Results

### Deletion of *rpoN* affects the colony morphotype and cell morphology of *B. cereus* ATCC 14579

*B. cereus* ATCC 14579, its *rpoN* mutant and complemented strain were routinely streaked on BHI plates with 1.5% agar. On this medium the *rpoN* mutant displayed a characteristic dendritic (branched) colony morphology (Fig 1) in contrast to the round shaped and wide-spread colonies of the wild type strain (WT). The colony morphotype was partially restored in the complemented *rpoN* mutant albeit that the colony size remained reduced compared to the WT. Images of the *rpoN* mutant and WT cells from aerated overnight cultures obtained by Scanning Electron Microscopy (SEM) revealed differences in the morphology of single cells (Fig 2), with the mutant population displaying relatively more curved cells (~7% versus <0.7% for the WT) with a less smooth cell surface compared to the WT.

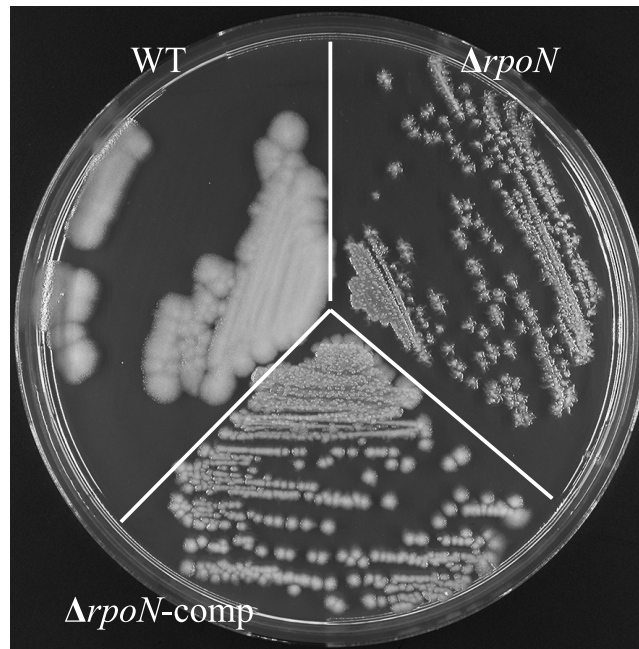
### The *rpoN* gene is essential for growth under oxygen limitation and at low temperature

The growth of the WT, its *rpoN* mutant derivative ( $\Delta rpoN$ ) and complemented *rpoN* mutant (*rpoN*-comp) was measured under aerated (with shaking), static and anaerobic conditions (with shaking). The static and anaerobic growth of the mutant was drastically impaired compared to the WT as determined by measurement of optical density at 600 nm (Fig 3). The aerobic growth was affected to a lesser extent. For all conditions tested, the phenotype of the *rpoN* mutant was restored to WT behaviour upon complementation with a plasmid-encoded copy of the *rpoN* gene. In addition, spore numbers in BHI after 48 h of aerated growth were significantly reduced for the *rpoN* mutant in comparison with the WT and the complemented strain (Fig 4).

The *rpoN* mutant was unable to grow at 12°C with aeration in BHI broth over a period of 4 days during which the OD at 600 nm was measured (Fig 5a). Upon prolonged incubation on BHI agar plates the colonies of the mutant were smaller and almost invisible compared to the WT and complemented strain when grown for up to 12 days at 12°C (Fig 5b).

### Carbohydrate metabolism

The ability of the WT, *rpoN* mutant and its complemented counterpart to ferment different carbohydrates was studied using the API CH50 test (BioMerieux). The *rpoN* mutant was able to ferment most of the sugars that were metabolized by the parental strain, with the exception of arbutin, esculin and cellobiose. These carbohydrates share a common structure, the first two are glucosides, and cellobiose is a disaccharide of glucose. All three carbohydrates share the same structural features as the building blocks of chitobiose, which is a glucosamine dimer.



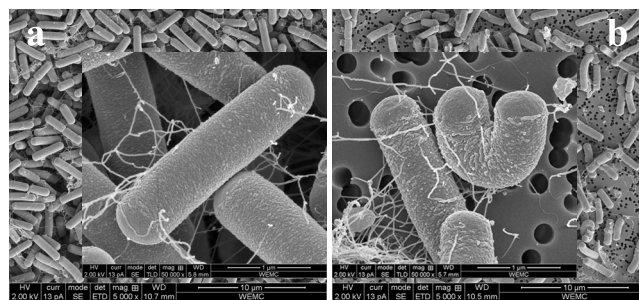
**Fig 1. Colony morphotypes.** Colonies of *B. cereus* ATCC 14579 WT (a), its  $\Delta rpoN$  mutant derivative (b) and the complemented mutant ( $\Delta rpoN$ -comp) (c) cultivated on BHI plates for 24 h at 30°C.

doi:10.1371/journal.pone.0134872.g001

## Sigma 54 is essential for flagella biosynthesis and affects biofilm formation and toxin production

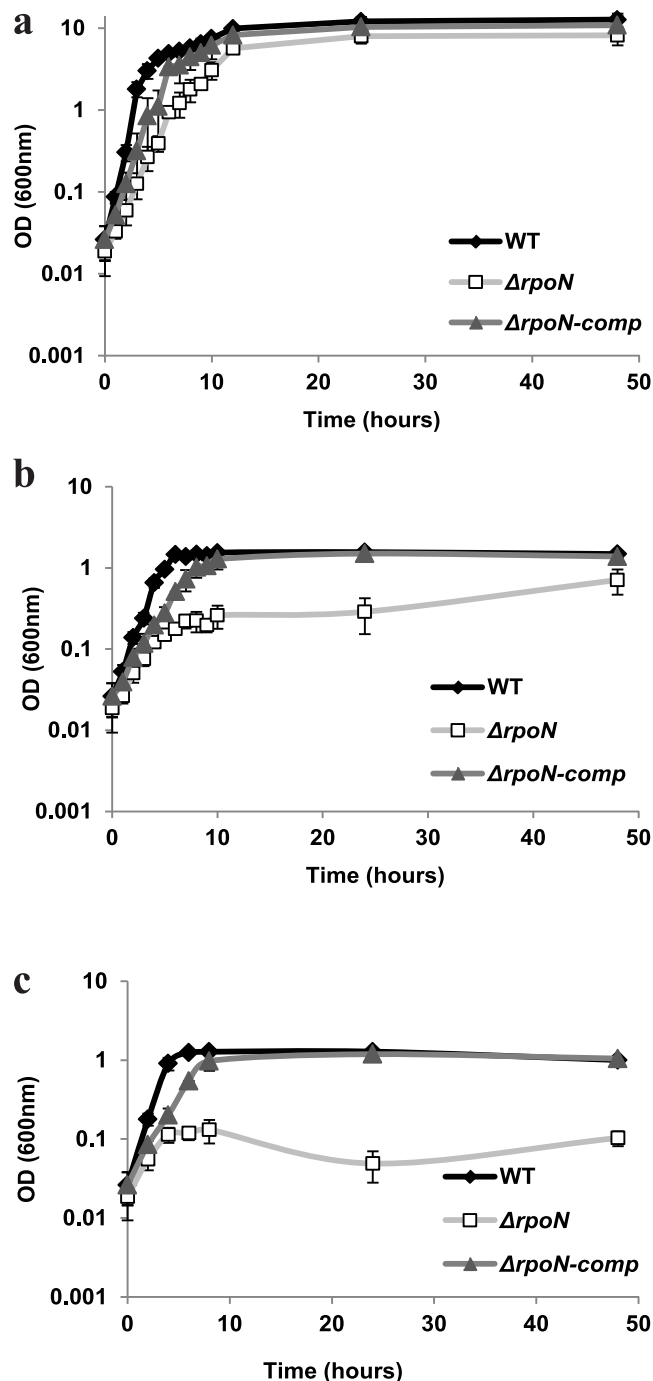
The swimming motility of the WT, *rpoN* mutant and the complemented strain was tested on BHI plates with 0.3% agar (Fig 6a, 6b and 6c) and showed that the *rpoN* mutant was severely impaired in motility (Fig 6a). Further support for the lack of motility of the *rpoN* mutant was obtained by flagella staining (Fig 6d, 6e and 6f). Notably, flagella could not be visualized for the mutant cells taken from the colony on swimming agar surface (Fig 6e), in contrast to the hyper-flagellated cells of the WT and *rpoN*-comp (Fig 6d and 6f).

*B. cereus*, including strain ATCC 14579 typically forms biofilms attached to polystyrene or stainless steel surfaces at the air-liquid interface [41, 42]. The *rpoN* mutant lost the ability to form robust biofilms of this type, but instead formed a submerged biofilm on the surface of the stainless steel coupons with lower intensity of staining (Fig 6h).



**Fig 2. Cells of the WT and its  $\Delta rpoN$  mutant.** SEM images of aerobically grown overnight cultures of *B. cereus* ATCC 14579 WT (a) and its  $\Delta rpoN$  mutant derivative (b) in BHI at 30°C.

doi:10.1371/journal.pone.0134872.g002

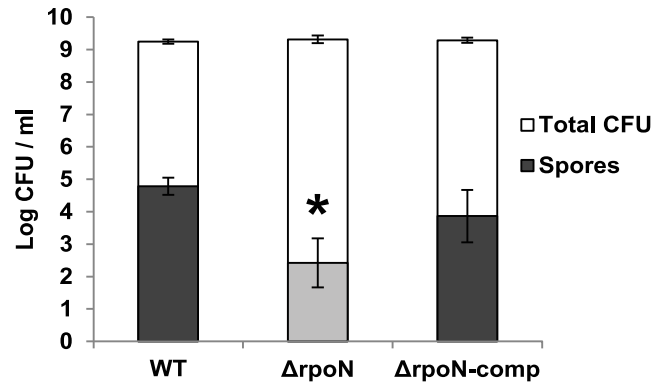


**Fig 3. Growth.** Growth of *B. cereus* ATCC 14579 WT,  $\Delta rpoN$  and  $\Delta rpoN$ -comp in BHI in three conditions with different oxygen availability a) aerated, b) static and c) anaerobic at 30°C.

doi:10.1371/journal.pone.0134872.g003

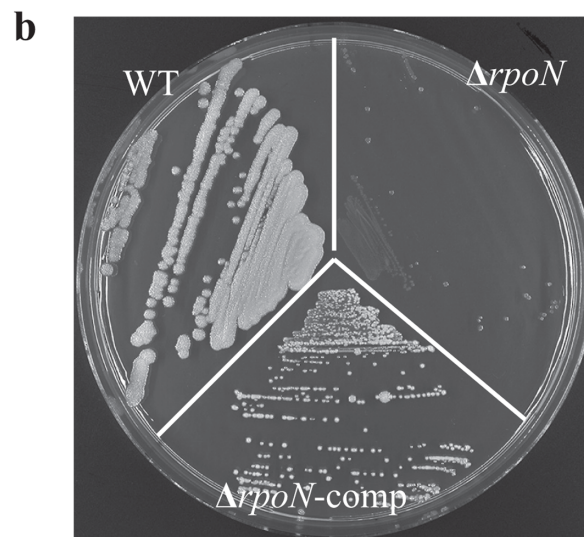
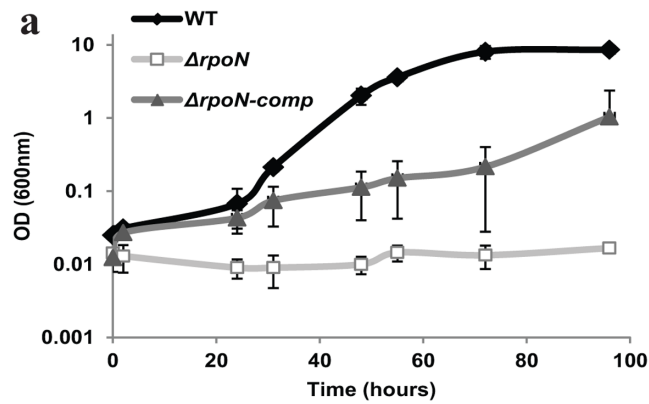
Production of non-haemolytic enterotoxin lytic component L2 (NheA) was measured in aerated (mid-exponential and end-exponential) and static (mid-exponential) growing conditions. Toxin levels for the *rpoN* mutant were significantly lower compared to the WT, with ratios of WT/ $\Delta rpoN$  levels varying between 2.9 and 4 depending on the condition tested (Fig 7). The toxin level was partially restored to that of the WT for the complemented mutant strain.





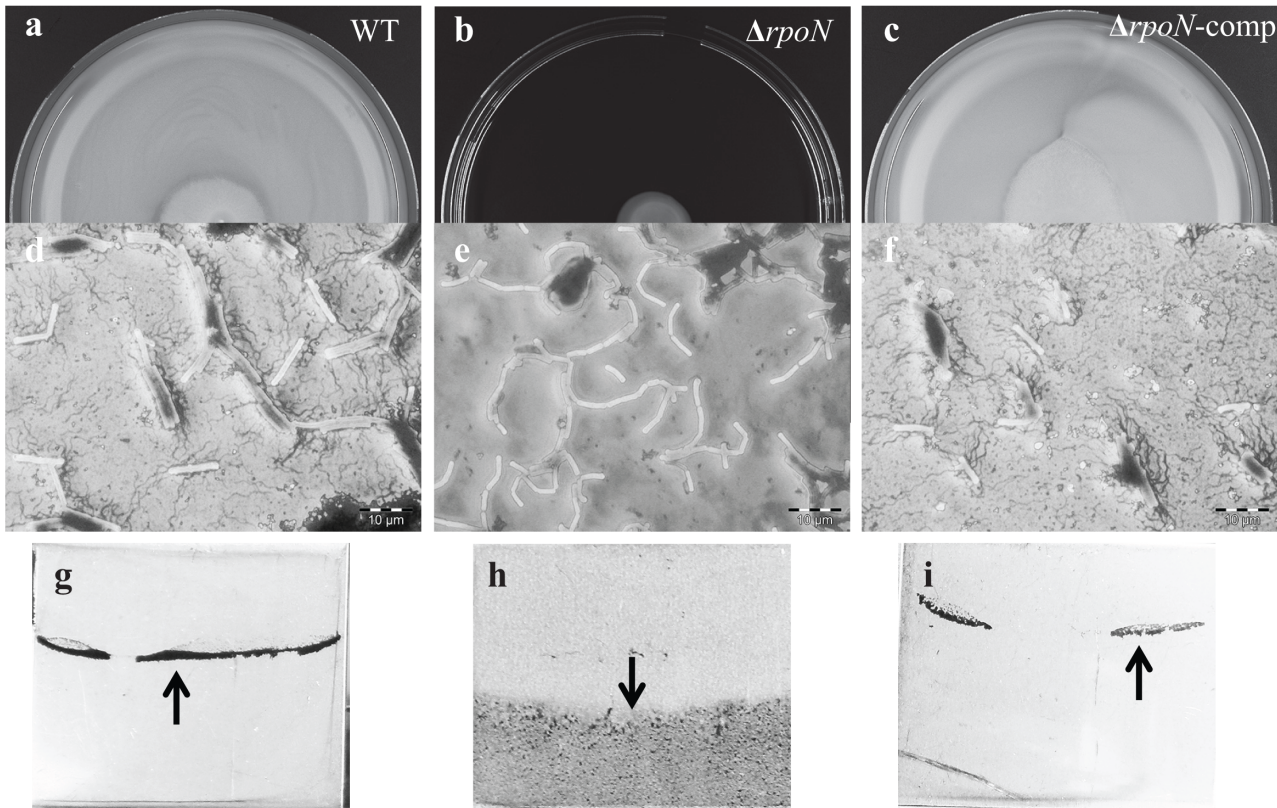
**Fig 4. Spore formation.** Number of spores and total viable counts in BHI formed by *B. cereus* ATCC 14579 WT,  $\Delta rpoN$  and  $\Delta rpoN$ -comp in BHI following aerated growth at 30°C for 48 h. The asterisk indicates significant difference (student's t test,  $p < 0.05$ ) of the  $\Delta rpoN$  compared to both the WT and  $\Delta rpoN$ -comp.

doi:10.1371/journal.pone.0134872.g004



**Fig 5. Growth at low temperature.** Growth of *B. cereus* ATCC 14579 WT,  $\Delta rpoN$  and  $\Delta rpoN$ -comp at 12°C. a) Aerated growth in BHI monitored up to 96 h, b) growth on BHI agar plate, picture was taken on day 12.

doi:10.1371/journal.pone.0134872.g005

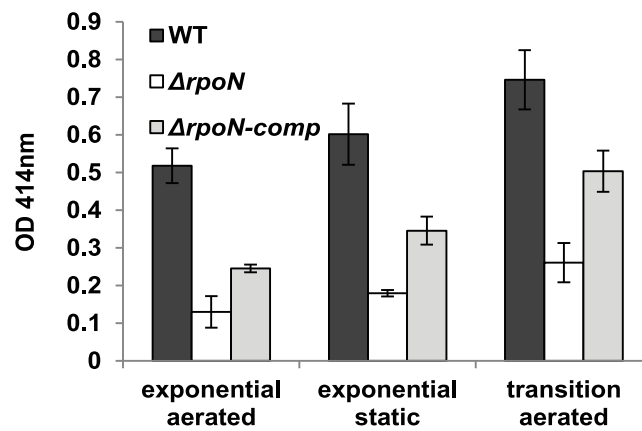


**Fig 6. Motility and biofilm formation.** Motility, presence of flagella and biofilm formation by *B. cereus* ATCC 14579 WT,  $\Delta rpoN$  and  $\Delta rpoN$ -comp. (a-c) Motility on swimming BHI plates with 0.3% agar after 48 h, (d-f) flagella staining of cells taken from the swimming plate, (g-i) Static biofilm formation on stainless steel coupons partly submerged in BHI after 48 h at 30°C. Biofilms were stained with crystal violet.

doi:10.1371/journal.pone.0134872.g006

### Altered gene expression profile upon deletion of the *rpoN* gene

Gene expression profiles of the WT, the *rpoN* mutant and the complemented mutant were investigated for aerobically grown cultures at mid-exponential and end-exponential growth



**Fig 7. Toxin production.** Production of non-hemolytic toxin (NheA) measured in BHI at 30°C with aeration at mid-exponential (OD 600 nm = 0.2) and end-exponential (OD 600 nm = 1) growth phases, and at mid-exponential (OD 600 nm = 0.2) phase during static growth.

doi:10.1371/journal.pone.0134872.g007

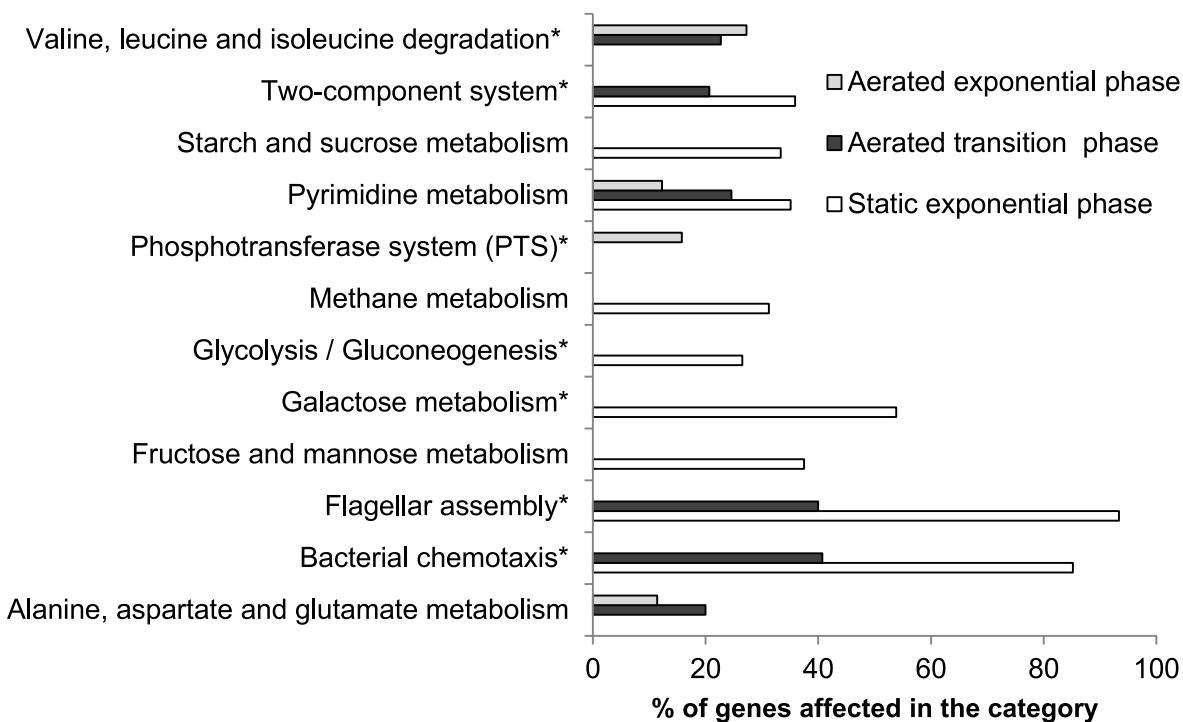
phases, and for static cultures at mid-exponential phase. The profiles of the WT and  $\Delta rpoN$ -comp clustered together and separately from  $\Delta rpoN$  (S1 Fig). This confirms that the observed effects of *rpoN* deletion on gene expression result mainly from deletion of the target gene and not from possible polar effects on neighbouring genes or regulatory elements.

The number of genes significantly affected in the *rpoN* mutant was the lowest in mid-exponentially (shaking t1) growing cells with aeration (598, from which 118 were down and 480 up regulated in the mutant). 39% of the affected genes were restored to WT level by complementation. In the end-exponential phase (shaking t2) with aeration 993 genes were altered in the mutant, of which 320 were down and 673 up regulated. Static growth affected the *rpoN* mutant most dramatically, with 1535 (854 up and 681 down regulated) gene expressions significantly changed compared to the WT. In the complemented mutant, gene expression was restored to WT levels by 48% (shaking t2) and 78% (static).

For the transcriptome data analysis our initial focus was on functions lost in the *rpoN* mutant but restored to near WT levels by complementation. The KEGG Metabolic pathways were analysed for functionalities down regulated and overrepresented in the mutant (Fig 8). Most dominant categories identified refer to flagellar assembly, two component systems, amino acid metabolism, carbohydrate metabolism and phosphotransferase systems (PTS). The affected cellular processes in the *rpoN* mutant are schematically presented in Fig 9a, 9b and 9c for mid-exponential aerated, end-exponential aerated and exponential static growth phases respectively.

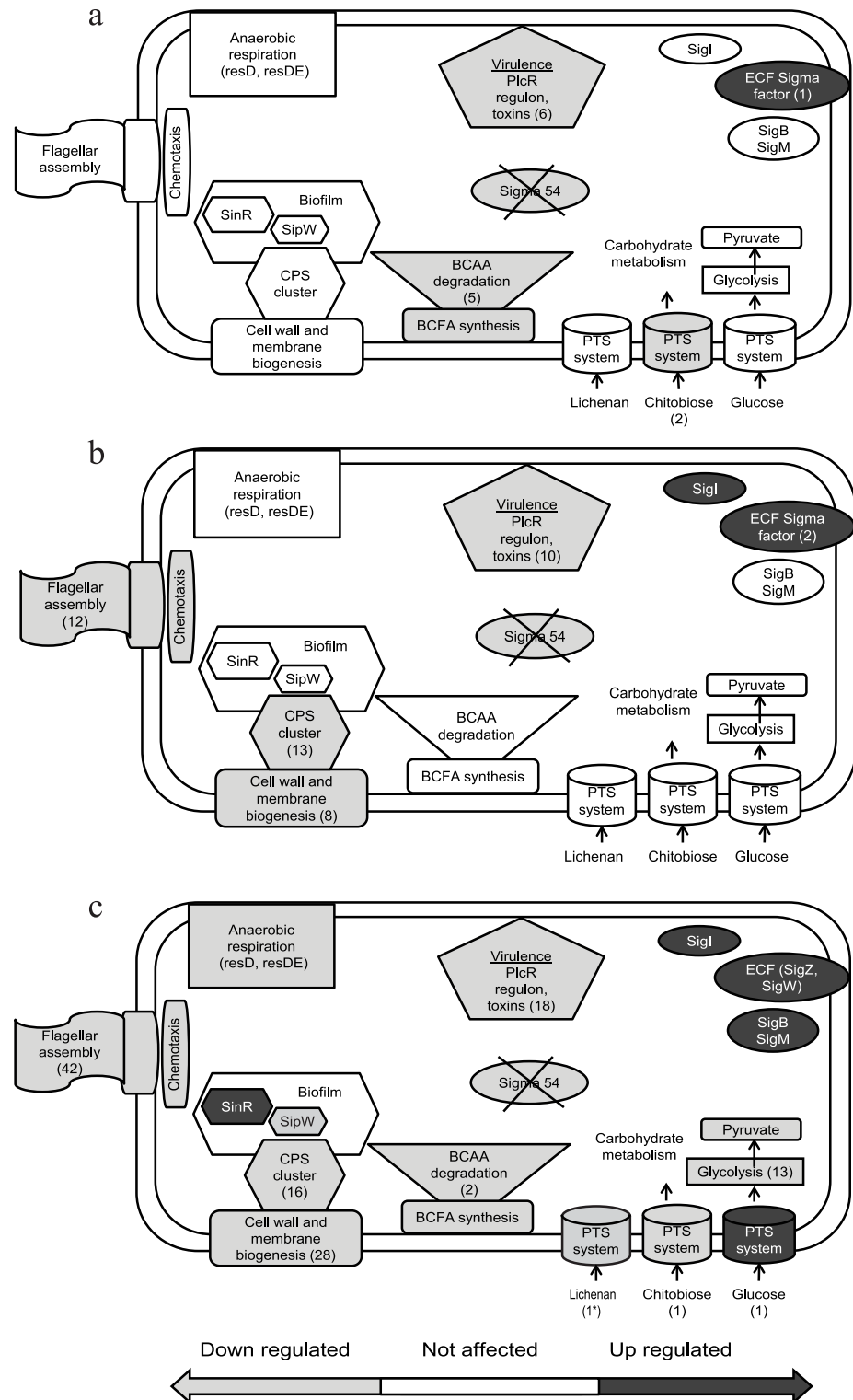
### Transcriptome responses linked to phenotypes and prediction of the Sigma 54 regulon

Specific transcriptome responses showed good agreement with the observed phenotypes such as cell wall biogenesis, carbohydrate metabolism, toxin production, motility and biofilm



**Fig 8. Affected metabolic pathways.** Overrepresented metabolic pathways significantly down regulated in  $\Delta rpoN$ . Outcome of FIVA analysis of significantly affected genes. Categories with asterisk (\*) were restored to close to WT condition by complementation.

doi:10.1371/journal.pone.0134872.g008



**Fig 9. Affected processes in the cell.** Schematic model of cellular processes, based on observed phenotypes combined with affected and complemented genes in the *rpoN* mutant. a) Aerated growth mid-exponential phase, b) aerated growth end-exponential phase, c) static growth mid-exponential phase. The numbers in (brackets) are the number of genes affected in the given category. Asterisk (\*) means the gene was not complemented.

doi:10.1371/journal.pone.0134872.g009

formation. In relation to cell surface morphology, transcriptome analysis showed several (14 in aerated condition at end-exponential phase, 36 under static condition) membrane and cell wall biogenesis related genes down regulated in the mutant (Table A in [S1 File](#)). As support for observed phenotypes related to carbohydrate utilisation (APICH50 test) in the *rpoN* mutant, BC0807 encoding a component of the diacetylchitobiose-specific sugar transporting PTS system was downregulated in the mutant, along with BC5211 encoding lichenan oligosaccharide specific PTS component in shaking t1 and static conditions (Table B in [S1 File](#)). The latter belongs to the orthologous group of cellobiose-specific PTS systems. A Sigma 54 promoter binding site was identified upstream BC5211 as a result of an *in silico* search using the -12–24 consensus promoter region by Francke et al. [23] (Table C in [S1 File](#), previously unpublished). Furthermore the gene encoding for the EBP *levR* (BC5205) is located in proximity, which suggests that this PTS system is most likely regulated by Sigma 54. In addition, several genes encoding enzymes, such as chitooligosaccharide deacetylase (BC0171) and 6-phospho-beta-glucosidase (BC5209), involved in initial stages of utilisation of the above mentioned carbon sources were also down regulated in the mutant (Table B in [S1 File](#)).

The role of Sigma 54 in cold shock survival of *B. subtilis* has been linked previously to synthesis of branched chain fatty acids which can be formed by degradation of branched amino acids, such as isoleucine [17]. Enzymes encoded by the *bkd* operon are involved in this conversion. Similar to *B. subtilis* [18], the gene encoding the BkdR regulator (BC4165) is located in the flanking region of the *B. cereus bkd* operon (BC4163-4157) which was down regulated in the *rpoN* mutant in all three conditions tested (Table D in [S1 File](#)). Furthermore, a Sigma 54 promoter binding site was identified upstream of BC4163 (Table C in [S1 File](#)), which suggests that the *bkd* operon is regulated by Sigma factor 54 in *B. cereus*. Reduced expression of the *bkd* operon could explain the impaired growth of the *rpoN* mutant observed at low temperature.

Loss of motility was accompanied by lower expression levels of genes involved in flagellar biosynthesis and chemotaxis, including the gene that encodes FlhF, a putative transcriptional regulator [43], in the mutant compared to the WT at shaking t2 (12 genes) and especially in static conditions (42 genes) (Table E in [S1 File](#)).

The transcriptome data revealed up regulation of SinR, a known negative regulator of biofilm formation in *B. subtilis* [44], in the *rpoN* mutant in shaking t1 and static conditions, which was restored by complementation in static condition. Interestingly, even though SinI, the antagonist of SinR, was also up regulated in the mutant in all conditions (Table F in [S1 File](#)), *sipW* encoding a signal peptidase, which processes the EPS component TasA and is important for *B. subtilis* and *B. cereus* biofilm formation [45], was down regulated in static condition. Furthermore, genes involved in putative capsular polysaccharide (CPS) biosynthesis (BC5263-BC5278 [46]) were down regulated in the mutant and reverted to WT levels in static (16 genes) and shaking t2 (13 genes) conditions upon complementation (Table F in [S1 File](#)).

The *gab* gene cluster, involved in  $\gamma$ -aminobutyric acid (GABA) shunt, as well as the lysine-2,3-aminomutase gene are regulated by Sigma 54 in *B. thuringiensis* [20, 21, 47]. GabT (BC0355) and Lysine 2,3-aminomutase (BC2251) were predicted to be in the regulon of Sigma 54 in *B. cereus* (this study, Table C in [S1 File](#)). Both of these genes are located in the proximity of Sigma 54 EBPs (BC0356 and BC2250 respectively, for the full list of EBPs refer to supplement 2 in [23]). However, the expression of these two genes was not affected in the *rpoN* mutant.

Lower non-haemolytic enterotoxin (NHE) production by the *rpoN* mutant was supported by lower expression of the NHE-lytic component L2 gene (BC1809, Table G in [S1 File](#)). The expression of several other predicted or confirmed virulence factors [48], including the virulence regulator PlcR were also down regulated in the mutant, for the affected genes (6 in shaking t1, 10 in shaking t2, 18 in static) see Table G in [S1 File](#).

Differential expression of sporulation related genes such as AbrB (BC0042) and Stage V sporulation protein S (BC2142) (Table I in [S1 File](#)) was observed in end-exponential phase cells, which may have affected sporulation efficiency in the mutant, but more studies are required to support a direct role for Sigma 54 in sporulation control.

## Discussion

Even though deletion of the *rpoN* gene was not lethal to *B. cereus* ATCC 14579, a wide range of cellular functions was affected as reflected both in phenotypic response and in gene expression patterns of the *rpoN* mutant compared to the WT. Phenotypes that were affected in the *rpoN* mutant included growth under anaerobic conditions and at low temperature, biofilm formation and motility, sporulation and toxin production. Most of these functions are part of survival strategies of *B. cereus*, in line with described roles of Sigma 54 in adaptation to unfavourable environmental conditions for *Listeria monocytogenes* and *Escherichia coli* [9, 49]. A common theme for Sigma 54 among different species can be found in regulation of processes related to flagellar biosynthesis and motility. Its role in motility has been previously reported for different microorganisms, such as *Campylobacter jejuni* [50], *L. monocytogenes* [49], *Vibrio fischeri* [10], *E. coli* [11] and *Pseudomonas fluorescens* [29]. In addition, a multispecies *in silico* study pointed at a strong positive correlation between the presence of the Sigma 54 encoding gene and the ability of the species to form flagella [23]. However, motility of a *B. subtilis* *rpoN* mutant was not affected [5]. In our study the ability to synthesize flagella was lost in the *rpoN* mutant of *B. cereus* ATCC 14579, shown both by phenotypes and flagellar gene expression, thus supporting the role of Sigma 54 in motility in this species.

The role of Sigma 54 in motility in literature is often intertwined with its role in biofilm formation [10, 16, 51], which is not surprising since for a wide range of microorganisms, motility was found to be a prerequisite for biofilm formation [52, 53]. Biofilm formation was reduced upon deletion of the gene encoding Sigma 54 for various species, including *Vibrio anguillarum* [16] and *Burkholderia cenocepacia* [51]. By contrast, the *rpoN* mutant of *Enterococcus faecalis* was resistant to autolysis and formed more robust biofilms conceivably due to altered relative composition of extracellular components [12]. *V. fischeri* produced a more widespread biofilm with less intense CV staining compared to the WT upon deletion of the *rpoN* gene. This effect could not be ascribed to the loss of motility since a flagella-less mutant of *V. fischeri* could still form WT-like biofilms [10]. In our study, motility loss could be responsible for the appearance of a submerged biofilm of the *B. cereus* *rpoN* mutant, while both the WT and complemented mutant strain formed only air-liquid biofilms. This is in line with another study showing importance of motility for formation of air-liquid interface biofilms [52]. In addition to motility loss, other factors may have contributed to reduced biofilm formation in the *rpoN* mutant, including downregulation of *sipW* and the putative CPS cluster encoding capsular polysaccharide biosynthesis genes (Table F in [S1 File](#)), and slower growth in static conditions.

The *rpoN* mutant formed very distinctive dendritic colonies on BHI plates ([Fig 1](#)). This type of colony morphology has been described previously for a PlcR deletion mutant of *B. cereus* ATCC 14579 albeit on nutrient poor swarming agar. This phenotype was caused by overproduction of a biosurfactant leading to sliding behaviour of the non-flagellated mutant [54]. It was suggested that the production of the biosurfactant is negatively regulated by PlcR. Notably, the expression of PlcR and its regulon members was downregulated in the *rpoN* mutant (Table G in [S1 File](#)), but it remains to be determined whether the dendritic colony formation is caused by altered surfactant production.

PTS systems are an important part of carbon metabolism in bacteria since they catalyse the transport of sugars and their derivatives. Some PTS systems have been shown to be under the

control of Sigma 54 in different microorganisms [15, 55, 56]. Around 3% of all predicted EBPs involved in Sigma 54 mediated regulation have been found to be directly linked to signalling via PTS systems [23]. In addition to mediating nutrient uptake, PTS systems play a regulatory role in metabolism [56, 57] and a role in biofilm formation by *B. cereus* [58] has been described. In our study the expression of diacetylchitobiose-specific and sucrose-specific PTS systems was down regulated in the *rpoN* mutant (Table B in S1 File) showing the positive regulation of those PTS systems by Sigma 54.

The growth of the *rpoN* mutant was significantly impaired in static and anaerobic conditions, which indicates that the role of Sigma 54 is more pronounced in environments with oxygen limitation. Similarly, a *Campylobacter jejuni* *rpoN* mutant showed survival defects in static cultures compared to those grown with aeration [13]. A possible link for impaired static growth of the *rpoN* mutant of *B. cereus* could be down-regulation of the two component regulatory genes *resD* and *resE* required for anaerobic respiration in *B. subtilis* [59] and respiratory nitrate (*nar*) and nitrite (*nas*) reductase operons [26] (Table H in S1 File). On the other hand, *B. cereus* is able to switch to fermentative metabolism under anaerobic conditions, however for this pyruvate availability is important [25], and this intermediate is produced via glycolysis in the cell, a pathway which was downregulated in the *rpoN* mutant during static growth.

An *in silico* search by Francke et al. [23] (data presented in Table C in S1 File, previously unpublished) based on the conserved promoter binding sites of Sigma 54 found putative binding sites in proximity of 32 genes in *B. cereus* ATCC 14579 (Table C in S1 File). A similar search by Peng et al. (2015) in *B. thuringiensis* revealed 16 positions, from which 9 gene functions are overlapping with our predicted regulon. In our transcriptome study, 16 out of those 32 genes were significantly affected ( $fdr < 0.01$ , without using any cut off for expression) in the *rpoN* mutant at least in one of the conditions. Seven of those genes were under positive regulation by Sigma 54, and included genes involved in cell metabolism such as phosphate butyryltransferase (BC4163), PTS system lichenan-specific IIC component (BC5211), methionine aminopeptidase (BC0153), undecaprenyl pyrophosphate phosphatase (BC0677) and 6-phosphogluconate dehydrogenase-like protein (BC2225). However, several of the other predicted regulon members were significantly upregulated in the *rpoN* mutant, such as MarR family transcriptional regulator (BC2434) and PhaR protein (BC1316), suggesting the existence of additional regulatory networks or indirect regulation. The other 16 genes were not significantly affected, which may be due to specificity of growth conditions required for expression of these genes.

Several phenotypes such as the toxin production and low temperature growth were only partly restored, which could be due to the fact that the re-introduction of the *rpoN* gene on a plasmid is not identical to the WT situation. Such incomplete complementation of the *rpoN* has been reported previously for *L. monocytogenes* [60] and *E. faecalis* [12].

In all conditions the number of genes up regulated in the *rpoN* deletion mutant exceeded the number of down regulated genes. Sigma 54 is known to act as an activator and not a repressor of gene expression [61], which seems in contradiction with our data. However, it may suggest that up regulation of genes in the *rpoN* mutant results from indirect effects of *rpoN* deletion, for example via other affected regulators. Indeed, regulators such as several extra-cytoplasmic function (ECF) sigma factors and Sigma B (in static growth) were affected in the *rpoN* mutant (Table I in S1 File), or *codY* [62] which was down regulated in static growth. Furthermore, due to the link of Sigma 54 to metabolism and environmental response, the effects of *rpoN* deletion can also be medium or temperature dependent, which was already shown for motility of an *E. coli* *rpoN* mutant [11].

To conclude, this study provides experimental evidence that in *B. cereus* Sigma 54 is involved either directly or indirectly in a large range of cellular processes such as growth at low temperature and in anaerobic conditions, motility and biofilm formation and toxin production.

All observed phenotypes indicate that Sigma 54 of *B. cereus* regulates metabolic rearrangements as a survival strategy to adapt to different environmental niches, ranging from soil, via food processing environments and foods, to human.

## Supporting Information

**S1 Fig. Clustering of WT,  $\Delta rpoN$  mutant and  $\Delta rpoN$ -comp.** Clustering of array samples based on expression patterns (example on aerated end-exponential phase). Data was normalized per gene and per row and clustered using UPGMA & pearson correlation in Genesis [63]. (EPS)

**S1 File. Transcriptomic data.** Relevant gene expression ratios in the *rpoN* mutant compared to WT. Genes are grouped in tables by their functions. **Table A in S1 File. Cell wall and membrane biogenesis.** Genes related to cell wall and membrane biogenesis significantly down regulated in the *rpoN* mutant ( $p < 0.01$ , ratio  $> 3$ ). Genes that are also a part of the CPS cluster in Biofilm related table are not included here. **Table B in S1 File. Carbohydrate metabolism.** Genes related to carbohydrate metabolism significantly down regulated in the *rpoN* mutant ( $p < 0.01$ , ratio  $> 3$ ). **Table C in S1 File. Predicted Sigma 54 regulon.** Predicted regulon members of Sigma 54 according significantly affected in the *rpoN* mutant in the transcriptomic study ( $p < 0.01$ , no cutoff for expression ratio). The predicted regulon members were obtained as described in [23], by in silico search of the conserved -12-24 promoter region of Sigma 54. **Table D in S1 File. Aminoacid metabolism.** Genes involved in Valine, leucine and Isoleucine degradation significantly down regulated in the *rpoN* mutant ( $p < 0.01$ , ratio  $> 3$ ). **Table E in S1 File. Motility.** Genes related to motility significantly down regulated in the *rpoN* mutant ( $p < 0.01$ , ratio  $> 3$ ). **Table F in S1 File. Biofilm formation.** Genes related to biofilm formation significantly affected in the *rpoN* mutant ( $p < 0.01$ , ratio  $> 3$ ). **Table G in S1 File. Virulence.** Genes related to virulence significantly affected in the *rpoN* mutant ( $p < 0.01$ , ratio  $> 3$ ). **Table H in S1 File. Anaerobic respiration.** Genes relevant for anaerobic respiration significantly down regulated in the *rpoN* mutant ( $p < 0.01$ , ratio  $> 3$ ). **Table I in S1 File. Regulators and sporulation related genes.** Sigma factors significantly affected in the *rpoN* mutant ( $p < 0.01$ , ratio  $> 3$ ). (DOCX)

## Acknowledgments

We thank Jos Boekhorst (NIZO food research) for designing the array hybridization scheme and subsequently normalizing obtained transcriptomic data, Hans Heilig (Wageningen University) for array slides image analysis with Agilent Feature Extraction software and Julien Brillard (INRA, Avignon) for kindly providing us with the plasmid (pHT 315) for complementation. We also thank Christof Francke (CMBI, Radboud University) for the predicted Sigma 54 regulon members in *Bacillus cereus* ATCC 14579.

## Author Contributions

Conceived and designed the experiments: HH MT MNG TA. Performed the experiments: HH MT. Analyzed the data: HH MT. Contributed reagents/materials/analysis tools: MT. Wrote the paper: HH MNG TA.

## References

1. Hecker M, Pané-Farré J, Völker U. SigB-dependent general stress response in *Bacillus subtilis* and related gram-positive bacteria. *Annu Rev Microbiol* 2007. p. 215–36. PMID: [18035607](#)



2. Van Schaik W, Tempelaars MH, Wouters JA, De Vos WM, Abee T. The alternative sigma factor  $\sigma_B$  of *Bacillus cereus*: response to stress and role in heat adaptation. *J Bacteriol.* 2004; 186(2):316–25. PMID: [14702299](#)
3. Arsène F, Tomoyasu T, Bukau B. The heat shock response of *Escherichia coli*. *Int J Food Microbiol.* 2000; 55(1–3):3–9. PMID: [10791710](#)
4. Merrick MJ. In a class of its own—The RNA polymerase sigma factor  $\sigma_{54}$  ( $\sigma(N)$ ). *Mol Microbiol.* 1993; 10(5):903–9. PMID: [7934866](#)
5. Debarbouille M, Martin-Verstraete I, Kunst F, Rapoport G. The *Bacillus subtilis sigL* gene encodes an equivalent of sigma 54 from gram-negative bacteria. *Proc Natl Acad Sci U S A.* 1991; 88(20):9092–6. PMID: [1924373](#)
6. Jones DHA, Franklin FCH, Thomas CM. Molecular analysis of the operon which encodes the RNA polymerase sigma factor  $\sigma_{54}$  of *Escherichia coli*. *Microbiology.* 1994; 140(5):1035–43.
7. Buck M, Gallegos MT, Studholme DJ, Guo Y, Gralla JD. The bacterial enhancer-dependent  $\sigma_{54}$  ( $\sigma(N)$ ) transcription factor. *J Bacteriol.* 2000; 182(15):4129–36. PMID: [10894718](#)
8. Studholme DJ, Dixon R. Domain architectures of  $\sigma_{54}$ -dependent transcriptional activators. *J Bacteriol.* 2003; 185(6):1757–67. PMID: [12618438](#)
9. Reitzer L, Schneider BL. Metabolic context and possible physiological themes of  $\sigma_{54}$ -dependent genes in *Escherichia coli*. *Microbiol Mol Biol Rev.* 2001; 65(3):422–44. PMID: [11528004](#)
10. Wolfe AJ, Millikan DS, Campbell JM, Visick KL. *Vibrio fischeri*  $\sigma_{54}$  controls motility, biofilm formation, luminescence and colonization. *Appl Environ Microbiol.* 2004; 70(4):2520–4. PMID: [15066853](#)
11. Dong T, Yu R, Schellhorn H. Antagonistic regulation of motility and transcriptome expression by RpoN and RpoS in *Escherichia coli*. *Mol Microbiol.* 2011; 79(2):375–86. doi: [10.1111/j.1365-2958.2010.07449.x](#) PMID: [21219458](#)
12. Iyer VS, Hancock LE. Deletion of  $\sigma_{54}$  (*rpoN*) alters the rate of autolysis and biofilm formation in *Enterococcus faecalis*. *J Bacteriol.* 2012; 194(2):368–75. doi: [10.1128/JB.06046-11](#) PMID: [22081387](#)
13. Hwang S, Jeon B, Yun J, Ryu S. Roles of RpoN in the resistance of *Campylobacter jejuni* under various stress conditions. *BMC Microbiol.* 2011; 11.
14. Dalet K, Cenatiempo Y, Cossart P, Glaser P, Amend A, Baquero-Mochales F, et al. A  $\sigma_{54}$ -dependent PTS permease of the mannose family is responsible for sensitivity of *Listeria monocytogenes* to mesentericin Y105. *Microbiology.* 2001; 147(12):3263–9.
15. Stevens MJA, Molenaar D, De Jong A, De Vos WM, Kleerebezem M.  $\sigma_{54}$ -mediated control of the mannose phosphotransferase system in *Lactobacillus plantarum* impacts on carbohydrate metabolism. *Microbiology.* 2010; 156(3):695–707.
16. Hao B, Mo ZL, Xiao P, Pan HJ, Lan X, Li GY. Role of alternative sigma factor 54 (RpoN) from *Vibrio anguillarum* M3 in protease secretion, exopolysaccharide production, biofilm formation, and virulence. *Appl Microbiol Biotechnol.* 2013; 97(6):2575–85. doi: [10.1007/s00253-012-4372-x](#) PMID: [22940804](#)
17. Wiegeshoff F, Beckering CL, Debarbouille M, Marahiel MA. Sigma L is important for cold shock adaptation of *Bacillus subtilis*. *J Bacteriol.* 2006; 188(8):3130–3. PMID: [16585774](#)
18. Debarbouille M, Gardan R, Arnaud M, Rapoport G. Role of bkdR, a transcriptional activator of the SigL-dependent isoleucine and valine degradation pathway in *Bacillus subtilis*. *J Bacteriol.* 1999; 181(7):2059–66. PMID: [10094682](#)
19. Ali NO, Bignon J, Rapoport G, Debarbouille M. Regulation of the acetoin catabolic pathway is controlled by sigma L in *Bacillus subtilis*. *J Bacteriol.* 2001; 183(8):2497–504. PMID: [11274109](#)
20. Zhu L, Peng Q, Song F, Jiang Y, Sun C, Zhang J, et al. Structure and regulation of the *gab* gene cluster, involved in the  $\gamma$ -aminobutyric acid shunt, are controlled by a  $\sigma_{54}$  factor in *Bacillus thuringiensis*. *J Bacteriol.* 2010; 192(1):346–55. doi: [10.1128/JB.01038-09](#) PMID: [19854901](#)
21. Peng Q, Yang M, Wang W, Han L, Wang G, Wang P, et al. Activation of *gab* cluster transcription in *Bacillus thuringiensis* by inverted question mark-aminobutyric acid or succinic semialdehyde is mediated by the Sigma 54-dependent transcriptional activator GabR. *BMC Microbiol.* 2014; 14(1):306.
22. Peng Q, Wang G, Liu G, Zhang J, Song F. Identification of metabolism pathways directly regulated by Sigma54 factor in *Bacillus thuringiensis*. *Frontiers in Microbiology.* 2015; 6:407.
23. Francke C, Groot Kormelink T, Hagemeyer Y, Overmars L, Sluijter V, Moezelaar R, et al. Comparative analyses imply that the enigmatic sigma factor 54 is a central controller of the bacterial exterior. *BMC Genomics.* 2011; 12.
24. Ceuppens S, Boon N, Uyttendaele M. Diversity of *Bacillus cereus* group strains is reflected in their broad range of pathogenicity and diverse ecological lifestyles. *FEMS Microbiol Ecol.* 2013; 84(3):433–50. doi: [10.1111/1574-6941.12110](#) PMID: [23488744](#)

25. Rosenfeld E, Duport C, Zigha A, Schmitt P. Characterization of aerobic and anaerobic vegetative growth of the food-borne pathogen *Bacillus cereus* F4430/73 strain. *Can J Microbiol.* 2005; 51(2):149–58. PMID: [16091773](#)
26. Van Der Voort M, Abee T. Transcriptional regulation of metabolic pathways, alternative respiration and enterotoxin genes in anaerobic growth of *Bacillus cereus* ATCC 14579. *J Appl Microbiol.* 2009; 107(3):795–804. doi: [10.1111/j.1365-2672.2009.04252.x](#) PMID: [19302486](#)
27. Mols M, Abee T. *Bacillus cereus* responses to acid stress. *Environ Microbiol.* 2011; 13(11):2835–43. doi: [10.1111/j.1462-2920.2011.02490.x](#) PMID: [21554514](#)
28. Guinebretière MH, Thompson FL, Sorokin A, Normand P, Dawyndt P, Ehling-Schulz M, et al. Ecological diversification in the *Bacillus cereus* Group. *Environ Microbiol.* 2008; 10(4):851–65. PMID: [18036180](#)
29. Jones J, Studholme DJ, Knight CG, Preston GM. Integrated bioinformatic and phenotypic analysis of RpoN-dependent traits in the plant growth-promoting bacterium *Pseudomonas fluorescens* SBW25. *Environ Microbiol.* 2007; 9(12):3046–64. PMID: [17991033](#)
30. Castelijin GA, Parabarsing JA, Zwietering MH, Moezelaar R, Abee T. Surface behaviour of *S. Typhimurium*, *S. Derby*, *S. Brandenburg* and *S. Infantis*. *Vet Microbiol.* 2013; 161(3–4):305–14. doi: [10.1016/j.vetmic.2012.07.047](#) PMID: [22906529](#)
31. Harshey RM, Matsuyama T. Dimorphic transition in *Escherichia coli* and *Salmonella typhimurium*: Surface-induced differentiation into hyperflagellate swarmer cells. *Proc Natl Acad Sci U S A.* 1994; 91(18):8631–5. PMID: [8078935](#)
32. Chakraborty T, Leimeister-Wachter M, Domann E, Hartl M, Goebel W, Nichterlein T, et al. Coordinate regulation of virulence genes in *Listeria monocytogenes* requires the product of the *prfA* gene. *J Bacteriol.* 1992; 174(2):568–74. PMID: [1729245](#)
33. Doan T, Aymerich S. Regulation of the central glycolytic genes in *Bacillus subtilis*: binding of the repressor CggR to its single DNA target sequence is modulated by fructose-1,6-bisphosphate. *Mol Microbiol.* 2003; 47(6):1709–21. PMID: [12622823](#)
34. Arantes O, Lereclus D. Construction of cloning vectors for *Bacillus thuringiensis*. *Gene.* 1991; 108(1):115–9. PMID: [1662180](#)
35. Song F, Peng Q, Brillard J, Buisson C, De Been M, Abee T, et al. A multicomponent sugar phosphate sensor system specifically induced in *Bacillus cereus* during infection of the insect gut. *FASEB J.* 2012; 26(8):3336–50. doi: [10.1096/fj.11-197681](#) PMID: [22611084](#)
36. Mols M, Mastwijk H, Nierop Groot M, Abee T. Physiological and transcriptional response of *Bacillus cereus* treated with low-temperature nitrogen gas plasma. *J Appl Microbiol.* 2013; 115(3):689–702. doi: [10.1111/jam.12278](#) PMID: [23758316](#)
37. Yang YH, Dudoit S, Luu P, Lin DM, Peng V, Ngai J, et al. Normalization for cDNA microarray data: a robust composite method addressing single and multiple slide systematic variation. *Nucleic Acids Res.* 2002; 30(4):e15. PMID: [11842121](#)
38. van Hijum SA, García de la Nava J, Trelles O, Kok J, Kuipers OP. MicroPreP: a cDNA microarray data pre-processing framework. *Appl Bioinformatics.* 2003; 2(4):241–4. PMID: [15130795](#)
39. Baldi P, Long AD. A Bayesian framework for the analysis of microarray expression data: regularized t-test and statistical inferences of gene changes. *Bioinformatics (Oxford, England).* 2001; 17(6):509–19.
40. Blom EJ, Bosman DWJ, van Hijum SAFT, Breitling R, Tijmsma L, Silvis R, et al. FIVA: Functional Information Viewer and Analyzer extracting biological knowledge from transcriptome data of prokaryotes. *Bioinformatics (Oxford, England).* 2007; 23(9):1161–3.
41. Wijman JGE, De Leeuw PPLA, Moezelaar R, Zwietering MH, Abee T. Air-liquid interface biofilms of *Bacillus cereus*: Formation, sporulation, and dispersion. *Appl Environ Microbiol.* 2007; 73(5):1481–8. PMID: [17209076](#)
42. Hayrapetyan H, Muller L, Tempelaars M, Abee T, Nierop Groot M. Comparative analysis of biofilm formation by *Bacillus cereus* reference strains and undomesticated food isolates and the effect of free iron. *Int J Food Microbiol.* 2015; 200:72–9. doi: [10.1016/j.ijfoodmicro.2015.02.005](#) PMID: [25700364](#)
43. Salvetti S, Ghelardi E, Celandroni F, Ceragioli M, Giannessi F, Senesi S. FlhF, a signal recognition particle-like GTPase, is involved in the regulation of flagellar arrangement, motility behaviour and protein secretion in *Bacillus cereus*. *Microbiology.* 2007; 153(8):2541–52.
44. Kearns DB, Chu F, Branda SS, Kolter R, Losick R. A master regulator for biofilm formation by *Bacillus subtilis*. *Mol Microbiol.* 2005; 55(3):739–49. PMID: [15661000](#)
45. Gao T, Foulston L, Chai Y, Wang Q, Losick R. Alternative modes of biofilm formation by plant-associated *Bacillus cereus*. *MicrobiologyOpen.* 2015.
46. Ivanova N, Sorokin A, Anderson I, Galleron N, Candelon B, Kapatral V, et al. Genome sequence of *Bacillus cereus* and comparative analysis with *Bacillus anthracis*. *Nature.* 2003; 423(6935):87–91. PMID: [12721630](#)

47. Zhang Z, Yang M, Peng Q, Wang G, Zheng Q, Zhang J, et al. Transcription of the lysine-2,3-aminomutase Gene in the kam locus of *Bacillus thuringiensis* subsp. Kurstaki HD73 is controlled by both  $\sigma 54$  and  $\sigma K$  Factors. *J Bacteriol.* 2014; 196(16):2934–43. doi: [10.1128/JB.01675-14](https://doi.org/10.1128/JB.01675-14) PMID: [24914178](https://pubmed.ncbi.nlm.nih.gov/24914178/)
48. Gohar M, Faegri K, Perchat S, Ravnum S, Økstad OA, Gominet M, et al. The PlcR virulence regulon of *Bacillus cereus*. *PLoS One.* 2008; 3(7).
49. Mattila M, Somervuo P, Rattei T, Korkeala H, Stephan R, Tasara T. Phenotypic and transcriptomic analyses of Sigma L-dependent characteristics in *Listeria monocytogenes* EGD-e. *Food Microbiol.* 2012; 32(1):152–64. doi: [10.1016/j.fm.2012.05.005](https://doi.org/10.1016/j.fm.2012.05.005) PMID: [22850387](https://pubmed.ncbi.nlm.nih.gov/22850387/)
50. Hwang JK, Chae MJ, Kim JW, Ku BK, Lee YJ. Role of flagella-related *rPoN* and *fliA* genes in *Campylobacter jejuni*. *J Anim Vet Adv.* 2010; 9(24):3034–8.
51. Saldías MS, Lamothe J, Wu R, Valvano MA. *Burkholderia cenocepacia* requires the RpoN sigma factor for biofilm formation and intracellular trafficking within macrophages. *Infect Immun.* 2008; 76(3):1059–67. doi: [10.1128/IAI.01167-07](https://doi.org/10.1128/IAI.01167-07) PMID: [18195023](https://pubmed.ncbi.nlm.nih.gov/18195023/)
52. Houry A, Briandet R, Aymerich S, Gohar M. Involvement of motility and flagella in *Bacillus cereus* biofilm formation. *Microbiology.* 2010; 156(4):1009–18.
53. Karatan E, Watnick P. Signals, regulatory networks, and materials that build and break bacterial biofilms. *Microbiol Mol Biol Rev.* 2009; 73(2):310–47. doi: [10.1128/MMBR.00041-08](https://doi.org/10.1128/MMBR.00041-08) PMID: [19487730](https://pubmed.ncbi.nlm.nih.gov/19487730/)
54. Hsueh YH, Somers EB, Lereclus D, Ghelardi E, Wong ACL. Biosurfactant production and surface translocation are regulated by PlcR in *Bacillus cereus* ATCC 14579 under low-nutrient conditions. *Appl Environ Microbiol.* 2007; 73(22):7225–31. PMID: [17921286](https://pubmed.ncbi.nlm.nih.gov/17921286/)
55. Hécharde Y, Pelletier C, Cenatiempo Y, Frère J. Analysis of  $\sigma 54$ -dependent genes in *Enterococcus faecalis*: A mannose PTS permease (EilMan) is involved in sensitivity to a bacteriocin, mesentericin Y105. *Microbiology.* 2001; 147(6):1575–80.
56. Arous S, Buchrieser C, Folio P, Glaser P, Namane A, Hébraud M, et al. Global analysis of gene expression in an *rpoN* mutant of *Listeria monocytogenes*. *Microbiology.* 2004; 150(5):1581–90.
57. Pflüger-Grau K, Görke B. Regulatory roles of the bacterial nitrogen-related phosphotransferase system. *Trends Microbiol.* 2010; 18(5):205–14. doi: [10.1016/j.tim.2010.02.003](https://doi.org/10.1016/j.tim.2010.02.003) PMID: [20202847](https://pubmed.ncbi.nlm.nih.gov/20202847/)
58. Xu YB, Chen M, Zhang Y, Wang M, Wang Y, Huang Qb, et al. The phosphotransferase system gene *ptsI* in the endophytic bacterium *Bacillus cereus* is required for biofilm formation, colonization, and biocontrol against wheat sharp eyespot. *FEMS Microbiol Lett.* 2014; 354(2):142–52. doi: [10.1111/1574-6968.12438](https://doi.org/10.1111/1574-6968.12438) PMID: [24750250](https://pubmed.ncbi.nlm.nih.gov/24750250/)
59. Nakano MM, Zuber P, Glaser P, Danchin A, Hulett FM. Two-component regulatory proteins ResD-ResE are required for transcriptional activation of *fnr* upon oxygen limitation in *Bacillus subtilis*. *J Bacteriol.* 1996; 178(13):3796–802. PMID: [8682783](https://pubmed.ncbi.nlm.nih.gov/8682783/)
60. Okada Y, Okada N, Makino S-i, Asakura H, Yamamoto S, Igimi S. The sigma factor RpoN ( $\sigma 54$ ) is involved in osmotolerance in *Listeria monocytogenes*. *FEMS Microbiol Lett.* 2006; 263(1):54–60. PMID: [16958851](https://pubmed.ncbi.nlm.nih.gov/16958851/)
61. Sana TG, Soscia C, Tonglet CM, Garvis S, Bleves S. Divergent control of two type VI secretion systems by RpoN in *Pseudomonas aeruginosa*. *PLoS One.* 2013; 8(10).
62. Lindbäck T, Mols M, Basset C, Granum PE, Kuipers OP, Kovács AT. CodY, a pleiotropic regulator, influences multicellular behaviour and efficient production of virulence factors in *Bacillus cereus*. *Environ Microbiol.* 2012; 14(8):2233–46. doi: [10.1111/j.1462-2920.2012.02766.x](https://doi.org/10.1111/j.1462-2920.2012.02766.x) PMID: [22540344](https://pubmed.ncbi.nlm.nih.gov/22540344/)
63. Sturn A, Quackenbush J, Trajanoski Z. Genesis: Cluster analysis of microarray data. *Bioinformatics.* 2002; 18(1):207–8. PMID: [11836235](https://pubmed.ncbi.nlm.nih.gov/11836235/)