

CORRECTION

Correction: Cerebral Hemodynamic Changes of Mild Traumatic Brain Injury at the Acute Stage

The *PLOS ONE* Staff

There are errors in the title for [Table 1](#). The correct title is: Patients' and controls' demographic data and cause of injury. Please see the corrected [Table 1](#) here.



 OPEN ACCESS

Citation: The *PLOS ONE* Staff (2015) Correction: Cerebral Hemodynamic Changes of Mild Traumatic Brain Injury at the Acute Stage. *PLoS ONE* 10(5): e0127487. doi:10.1371/journal.pone.0127487

Published: May 1, 2015

Copyright: © 2015 The PLOS ONE Staff. This is an open access article distributed under the terms of the [Creative Commons Attribution License](#), which permits unrestricted use, distribution, and reproduction in any medium, provided the original author and source are credited.

Table 1. Patients' and controls' demographic data and cause of injury.

Case ID	Age (Years)	Sex	Race	Delay to Scan	ER GCS	Injury Mech.	ASL	SWI	Structural findings
Patients									
001	27	F	Caucasian	41 hr		MVA	X	X	
2	29	M	Caucasian	10 d	15	MVA		X	
002	24	M	Caucasian	46 hr		Fall		X	
4	20	M	Caucasian	27 hr	15	Fall		X	Moderate bleed, scalp edema
6	21	M	Black	4 d		MVA		X	
7	25	M	Black	17 hr	15	Assault	X	X	Nonsp hyperint, scalp edema
9	56	M	Indian	26 hr	15	MVA		X	Nonsp hyperint, 2 small bleeds
11	35	M	Black	36 hr		Fall		X	
14	30	M	Caucasian	7 d	15	Fall	X	X	
15	36	F	Black	9 hr	15	MVA	X	X	Arachnoid cyst
16	19	M	Black	3 hr	15	MVA	X	X	Pericallosal lipoma
17	23	M	Black	9 hr	15	MVA	X	X	
18	21	F	Caucasian	2 d	15	MVA		X	
19	30	F	Asian	8 hr	15	SBV	X	X	
Mean	27.14			55.29					
SD	5.52			68.82					
Median	26			31.5 hr					
Range	19–56			3 hr–10 d					
Controls									
1	24	F	Asian				X	X	
2	23	M	Indian				X		
3	45	M	Caucasian					X	Nonsp hyperint
5	22	M	Caucasian					X	Capillary telangiectasia
6	27	M	Asian				X	X	
7	23	F	Asian				X	X	
8	22	F	Asian				X	X	
9	65	F	Asian					X	Pineal gland cyst, Nonsp hyperint
36	52	F	Caucasian				X	X	Nonsp hyperint
37	44	M	Caucasian				X	X	Calcification of falx
38	41	M	Caucasian				X	X	
39	28	F	Caucasian					X	
40	27	F	Arabic				X	X	
41	29	M	Caucasian				X	X	
42	33	M	Caucasian				X	X	
43	66	F	Caucasian					X	Nonsp hyperint
44	38	M	Hispanic					X	Nonsp hyperint
45	28	M	Caucasian					X	
46	21	M	Black				X	X	
Mean	30.08								
SD	10.24								
Median	28								
Range	21–66								

doi:10.1371/journal.pone.0127487.t001

There is an error in the legend for Fig 3. Please see Fig 3 and its complete, correct legend here.

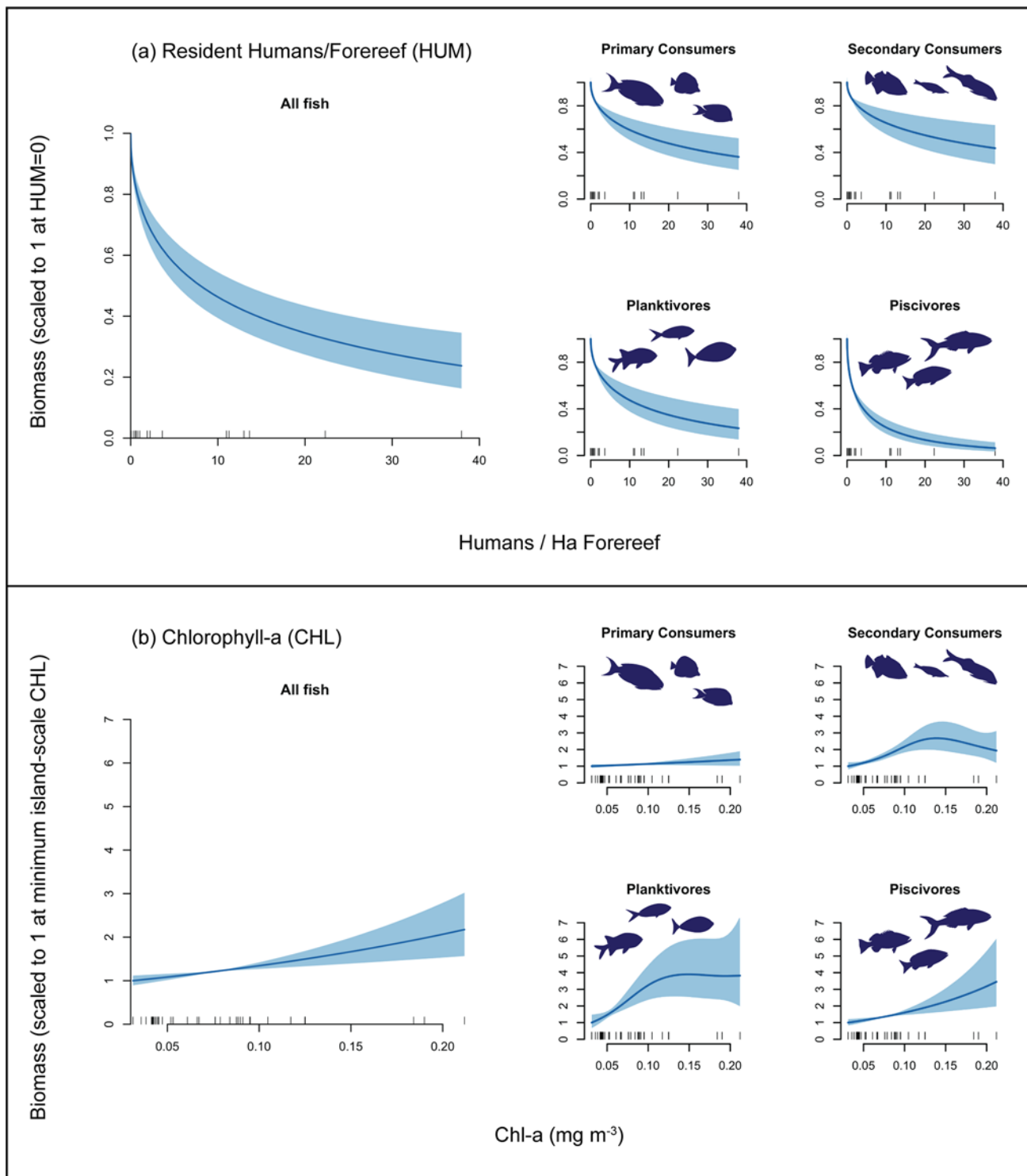


Fig 3. Mean susceptibility values and standard error in major veins. *indicates statistically significant difference between controls and patients.

doi:10.1371/journal.pone.0127487.g001

There are errors in the title and the key for [Table 2](#). Please see the corrected [Table 2](#) here.

Table 2. Group mean values for each vein and student's T-test comparison between control and patient groups.

	Controls mean (SD)	Patients mean (SD)	T-Test patient vs. control	Patient ΔYp (%)
R Septal	86.58 (23.87)	77.36 (22.31)	0.272	3.19
L Septal	78.33 (25.88)	68.77 (22.71)	0.294	3.66
C Septal	68.85 (17.34)	58.91 (13.26)	0.098	4.33
R Thalamostriate	144.79 (33.10)	135.65 (28.80)	0.423	1.89
L Thalamostriate	136.70 (30.58)	115.06 (22.83)	0.037*	4.75
Int Cerebral	123.58 (18.68)	122.06 (27.77)	0.874	0.37
R Basal	137.78 (34.46)	114.46 (20.58)	0.039*	5.08
L Basal	140.38 (38.50)	125.80 (35.85)	0.279	3.12

* indicates significant difference. L = left, R = right.

doi:10.1371/journal.pone.0127487.t002

There are errors in the key for [Table 3](#). Please see the corrected [Table 3](#) here.

Table 3. Comparison of mean CBF values (in mL/100g/min) between control and patient groups.

Region	Controls mean (SD)	Patients mean (SD)	p value
Left thalamus	30.03 (6.25)	41.61 (6.71)	0.22
Right thalamus	37.33 (6.17)	49.44 (8.77)	0.28
Left striatum	17.49 (4.01)	32.27 (3.72)	0.01*
Right striatum	21.4 (4.31)	33.69 (6.38)	0.14
Frontal lobe	24.38 (6.83)	37.54 (13.09)	0.03*
Temporal lobe	33.88 (10.81)	47.31 (17.97)	0.11
Occipital lobe	31.27 (5.02)	52.42 (19.63)	0.03*
Parietal lobe	42.14 (9.8)	53.66 (15.33)	0.10

p value shows level of significance for student's t-test.

* indicates significant difference.

doi:10.1371/journal.pone.0127487.t003

There are errors in the key for [Table 4](#). Please see the corrected [Table 4](#) here.

Table 4. mTBI patients' SAC scores compared with normalized SAC scores.

	Orientation mean (SD)	Memory mean (SD)	Concentration mean (SD)	Delayed Recall mean (SD)	Total Score mean (SD)
Controls (N = 568)	4.82 (0.43)	14.51 (0.98)	3.40 (1.27)	3.84 (1.11)	26.58 (2.23)
Patients (N = 7)	5 (0)	14 (1.15)	3.29 (1.11)	2 (1.91)	24.28 (2.98)
2-tailed T-Test (p value)	0.00	0.28	0.8	0.04*	0.08

* indicates significant difference.

doi:10.1371/journal.pone.0127487.t004

There is an error in the second sentence of the Discussion. The correct sentence is: We have demonstrated that, as a result of concussion, the brain has increased rCBF and consequently higher venous oxygenation.

Reference

1. Doshi H, Wiseman N, Liu J, Wang W, Welch RD, O'Neil BJ, et al. (2015) Cerebral Hemodynamic Changes of Mild Traumatic Brain Injury at the Acute Stage. PLoS ONE 10(2): e0118061. doi: [10.1371/journal.pone.0118061](https://doi.org/10.1371/journal.pone.0118061) PMID: [25659079](https://pubmed.ncbi.nlm.nih.gov/25659079/)