

CORRECTION

Correction: Palmitate Activates Autophagy in INS-1E β -Cells and in Isolated Rat and Human Pancreatic Islets

The *PLOS ONE* Staff

[Fig. 2A](#) incorrectly appears as a duplicate of Fig. 1A. The authors have provided a corrected version of [Fig. 2](#) here.

 OPEN ACCESS

Citation: The *PLOS ONE* Staff (2015) Correction: Palmitate Activates Autophagy in INS-1E β -Cells and in Isolated Rat and Human Pancreatic Islets. *PLoS ONE* 10(3): e0122235. doi:10.1371/journal.pone.0122235

Published: March 16, 2015

Copyright: © 2015 The PLOS ONE Staff. This is an open access article distributed under the terms of the [Creative Commons Attribution License](#), which permits unrestricted use, distribution, and reproduction in any medium, provided the original author and source are credited.

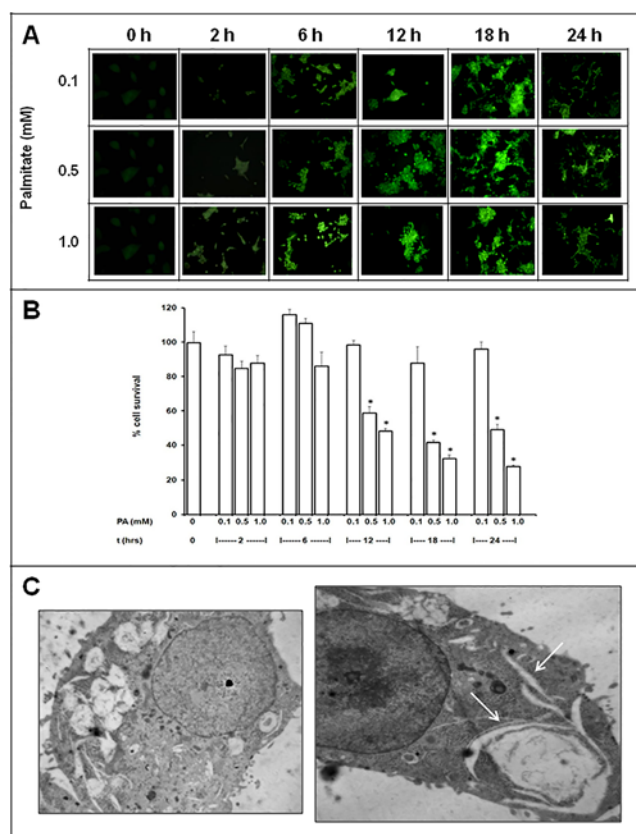


Figure 2

Fig 2. Effects of various incubation times (2–24 h) different palmitic acid (PA) concentrations (0.1, 0.5 and 1.0 mM) in INS-1E cells. A) MDC fluorescence, as indicator of autophagosome formation; B) cell viability; C) ultrastructure (0.5 mM PA for 24 h) (magnification: 10.000x).

doi:10.1371/journal.pone.0122235.g001

Reference

1. Martino L, Masini M, Novelli M, Befly P, Bugliani M, Marselli L et al. (2012) Palmitate Activates Autophagy in INS-1E β -Cells and in Isolated Rat and Human Pancreatic Islets. PLoS ONE 7(5): e36188. doi: [10.1371/journal.pone.0122235](https://doi.org/10.1371/journal.pone.0122235) PMID: [22563482](https://pubmed.ncbi.nlm.nih.gov/22563482/)