

RESEARCH ARTICLE

Altered Molecular Expression of the TLR4/NF- κ B Signaling Pathway in Mammary Tissue of Chinese Holstein Cattle with Mastitis

Jie Wu, Lian Li, Yu Sun, Shuai Huang, Juan Tang, Pan Yu, Genlin Wang*

College of Animal Science and Technology, Nanjing Agricultural University, Nanjing, People's Republic of China

* glwang@njau.edu.cn



OPEN ACCESS

Citation: Wu J, Li L, Sun Y, Huang S, Tang J, Yu P, et al. (2015) Altered Molecular Expression of the TLR4/NF- κ B Signaling Pathway in Mammary Tissue of Chinese Holstein Cattle with Mastitis. PLoS ONE 10(2): e0118458. doi:10.1371/journal.pone.0118458

Academic Editor: Srinivasa M Srinivasula, IISER-TVM, INDIA

Received: July 9, 2014

Accepted: January 17, 2015

Published: February 23, 2015

Copyright: © 2015 Wu et al. This is an open access article distributed under the terms of the [Creative Commons Attribution License](https://creativecommons.org/licenses/by/4.0/), which permits unrestricted use, distribution, and reproduction in any medium, provided the original author and source are credited.

Data Availability Statement: The microarray data has been deposited in the Gene Expression Omnibus database (accession number: GSE62845).

Funding: This work was supported by the National Natural Science Foundation of China No.31372290, the Science and Technology Sustentation Project of China (2011BAD28B02, 2012BAD12B00). The funders had no role in study design, data collection and analysis, decision to publish, or preparation of the manuscript.

Competing Interests: The authors have declared that no competing interests exist.

Abstract

Toll-like receptor 4 (TLR4) mediated activation of the nuclear transcription factor κ B (NF- κ B) signaling pathway by mastitis initiates expression of genes associated with inflammation and the innate immune response. In this study, the profile of mastitis-induced differential gene expression in the mammary tissue of Chinese Holstein cattle was investigated by Gene-Chip microarray and bioinformatics. The microarray results revealed that 79 genes associated with the TLR4/NF- κ B signaling pathway were differentially expressed. Of these genes, 19 were up-regulated and 29 were down-regulated in mastitis tissue compared to normal, healthy tissue. Statistical analysis of transcript and protein level expression changes indicated that 10 genes, namely TLR4, MyD88, IL-6, and IL-10, were up-regulated, while, CD14, TNF- α , MD-2, IL- β , NF- κ B, and IL-12 were significantly down-regulated in mastitis tissue in comparison with normal tissue. Analyses using bioinformatics database resources, such as the Kyoto Encyclopedia of Genes and Genomes (KEGG) pathway analysis and the Gene Ontology Consortium (GO) for term enrichment analysis, suggested that these differently expressed genes implicate different regulatory pathways for immune function in the mammary gland. In conclusion, our study provides new evidence for better understanding the differential expression and mechanisms of the TLR4/NF- κ B signaling pathway in Chinese Holstein cattle with mastitis.

Introduction

Mastitis is the persistent inflammatory response of mammary tissue attributed to intra-mammary invasion of pathogens [1]. Many different microbial and environmental factors can induce mastitis, so, it is important to understand the mechanisms controlling the immune response at the molecular level [2]. A better understanding of the molecular events and transition periods in response to different pathogens [1] would provide mechanistic insight into the physiological changes that render the mammary gland more susceptible to mastitis. This, in turn, would fuel the development of better preventative measures and bioinformatics-based approaches for data mining [3].

Toll-like receptor 4 (TLR4), a pattern recognition receptor, plays an important role in the induction of the inflammatory response by recognizing exogenous pathogen-associated molecular patterns and endogenous ligands [4, 5]. Activation of TLR4 is linked to the expression of pro-inflammatory cytokines and the activation of nuclear factor kappa B (NF- κ B) signaling pathways in several cell types [6, 7]. It was reported that TLR4 expression positively correlates with the levels of tumor necrosis factor- α (TNF- α) and interleukin-6 (IL-6) in models of myocardial ischemia-reperfusion rats [8]. In dairy cattle, increased NF- κ B activity was found in the milk and intra-mammary epithelial cells of mastitis-affected cows. The binding of lipopolysaccharide (LPS) to TLR4, in complex with CD14 and LY96 (Lymphocyte antigen-96; also known as MD-2), initiates TIR (Toll/IL1 Receptor) domain intracellular signaling through adaptor molecules, predominantly myeloid differentiation factor 88 (MyD88) [9]. This TLR4 and MyD88 signaling results in the activation of downstream kinases, leading to the degradation of I κ B, which frees NF- κ B to translocate to the nucleus. There, it binds κ B sites in the promoter region of genes encoding pro-inflammatory cytokines, including IL-1B and IL-6 [10]. Gilbert et al. [11] found that bovine mammary epithelial cells (bMEC) respond differently to various pathogenic stimuli. Crude LPS from *Escherichia coli* was associated with an NF- κ B and Fas signaling pathway, while the response to *Staphylococcus aureus* culture supernatant (SaS) was associated with an AP-1 and IL-17A signaling pathway. Sipka et al. [12] investigated the effect of intra-mammary treatment with cephalixin, alone or in combination with prednisolone, on gene expression profiles in mastitis experimentally-induced by *E. coli* in Holstein Friesian cows. They found that both treatments resulted in down-regulation of gene transcripts involved in chemokine and TLR-signaling pathways compared to challenged, untreated quarters. TLR4, which detects LPS from the cell wall of gram-negative bacteria and initiates the MyD88-I κ B-NF- κ B pathway response, is well established as an important cell surface receptor for the inflammatory response [13, 14]. TLR4 regulation of LPS activates the MyD88-dependent pathway (mediated by TLR-IL-1 receptor domain containing adapter protein/TIRAP), leading to the rapid activation of NF- κ B, which induces the production of various pro-inflammatory cytokines [15]. In addition, Zheng et al. [16] found that thymol could reduce the internalization of *Staphylococcus aureus* into bMEC by inhibiting NF- κ B activation and down-regulating the mRNA expression of tracheal antimicrobial peptide (TAP) and β -defensin (BNBD5). In the present study, we compared the gene expression of several key molecules involved in TLR4 activation and the NF- κ B signaling pathway in mammary tissue from Chinese Holstein cattle with and without mastitis. The results presented help facilitate deeper insight into the specific regulatory mechanisms of bovine mastitis.

Material and Methods

1. Tissue Samples

RNA samples were isolated from the mammary tissue of adult Chinese Holstein cows during late lactation with ($n = 3$) and without ($n = 3$) mastitis. The cows were received total mixed ration (TMR) premix. The Chinese Holstein cows without mastitis were not use of antibiotics, while the cows with mastitis were use. All of the cows were not injected with recombinant bovine somatotropin (rBST). Pathological changes indicating clinical mastitis were signs of udder inflammation, including dolor, rubor, change of color, and visibly abnormal milk containing flakes. The presence or absence of clinical mastitis was established by somatic cell count (SCC), the California mastitis test (CMT), and hematoxylin-eosin staining of mammary gland tissue (S1 Appendix). The experimental protocol used in this study was approved by the Ethics Committee of NanJing Agricultural University, China, and was performed in accordance with the Animal Care and Use Statute of China. Mammary tissue was collected within 10–20 min after

slaughter, and was frozen in liquid nitrogen until RNA extraction. Tissue was carefully segregated using ophthalmology tweezers and scalpels to avoid contamination.

2. RNA isolation

Total RNA was extracted using Trizol reagent (Invitrogen, Carlsbad, USA) according to the manufacturer's protocol. The absorbance values at 260 and 280 nm were obtained to assess RNA concentration and purity in the samples. RNA integrity was assessed by electrophoresis on 2% agarose gels (m/v).

3. Microarray assay

Gene chip analysis of the Bovine Genome Array was performed by an outside service provider (LC-Bio. CO., LTD). Total RNA from the tissue specimens was individually hybridized with gene chips. Briefly, in the first-strand cDNA synthesis reaction, 10 mg total RNA was used for reverse transcription using a T7-oligo (dT) promoter primer. Then, the double-stranded cDNA was synthesized from the first-strand cDNA using RNase H. After purification of the resulting DNA, an in vitro transcription reaction using the MEGA Script T7 Kit (Ambion, Inc., USA) produced biotin-labeled cRNA. After the cRNA was cleaned and fragmented, it was hybridized to the probe array at 45°C for 16 h. Thereafter, the probe array was washed and stained on the Fluidics Station, and the microarrays were scanned using a GeneChip Scanner 3000 (Affymetrix). The Affymetrix Micro Array Suite 5.0-Specific Terms GCOS version 1.4 was used for quantity analysis of the hybridization. The gene expression levels that had ≥ 2 -fold difference between normal and mastitis tissue were checked and further analyzed. The Molecule Annotation System (<http://david.abcc.ncifcrf.gov/>) was used to analyze the differentially expressed genes using the Kyoto encyclopedia of genes and genomes (KEGG) public pathway resource and the Gene Ontology (GO) consortium. The microarray data has been deposited in the Gene Expression Omnibus database (accession number: GSE62845).

4. Real-time reverse transcription-polymerase chain reaction (RT-PCR)

RT-PCR was performed to confirm the microarray results. Total RNA was extracted from normal and mastitis mammary tissue, as described above, and total RNA was reverse transcribed using a Reverse Transcription Levels kit (TaKaRa, Dalian, China) according to the manufacturer's protocol. The expression levels of 10 genes were measured. The house keeping gene 18S rRNA was used as an endogenous control. 18S rRNA is stable in all cases and low regulation by external influence, so the background is more stable when in RT-PCR. Studies have shown that 18S rRNA has previously been used as reference genes for qPCR with stimulated MEC [17, 18]. The 18S rRNA gene has previously been found suitable as reference genes for bovine cells and tissues [19]. Primers were designed using Primer Premier 5.0 and are shown in Table 1. RT-PCR was performed with SYBR Premix Ex Taq (TaKaRa Biotechnology Co., Ltd., Japan). The reaction solution was prepared on ice, and consisted of: 10 μ L of 2 \times SYBR Premix Ex Taq, 0.8 μ L of PCR Forward Primer (10 μ M), 0.8 μ L of PCR Reverse Primer (10 μ M), 0.4 mL of 50 \times ROX Reference Dye, 2 μ L of cDNA (100 ng μ L⁻¹), and dH₂O to a final volume of 20 μ L. The reaction mixtures were incubated in a 96-well plate at 95°C for 30 s, followed by 40 cycles of 95°C for 5 s, 60°C for 30 s and 72°C for 30 s. All reactions were performed in triplicate. The gene expression levels were analyzed with the $2^{-\Delta\Delta CT}$ method.

Table 1. Primer sequences for RT-PCR.

Gene name	NCBI Accession number	Product size (bp)	Primer Sequence (5'-3') Sense/antisense
IL-6	NM_173923.2	153	TGCTGGTCTTCTGGAGTATC GTGGCTGGAGTGGTTATTG
IL-1β	NM_174093.1	264	CGTCTTCTGGGACATTTTCG GTCTGAGGATGGGCTCTGGG
MD-2	AB072456.1	276	ACCGTTTGGTACGACTACTGTGAT CCTGAAGGAGAATTGTATTGTTGTG
NF-κB	XM_005226181.1	249	AAGAGAAGATGGGAAAGGCTG CGTCGGCAAATGAGAAGTAGTG
IL-12	AJ308426.2	238	ATTTATGTTTCAGCATGGTCACTCC CAGTGACAGGTGGGTGTCTCG
LBP	NM_001038674.2	108	TCAAGGGCATCACCAT GCACCTCCACATCACG
CD14	NM_174008.1	109	ACCACCCTCAGTCTCCGTAA GTGCTTGGGCAATGTTGAG
MyD88	NM_001014382.2	177	GCAGCATAACTCGGATAAA CAGACACGCACAACCTCA
TLR4	NW_003103900.1	166	TCCCACATCCTCGGTTCCC TCCATCCCAAGCCATCCCT
TNF-α	NM_173966	175	ACCCAGCCAACAGAAGC CCAGACGGGAGACAGGA
18S rRNA	NM_174841.2	116	TCCAGCCTTCTTCTGGGCAT GGACAGCACCGTGTGGCGTAGA
IL-10	NM_174088	110	GCCACAGGCTGAGAACC TTTCACTGCCTCCTCCAGAT

doi:10.1371/journal.pone.0118458.t001

5. Protein isolation and Western blotting

Total protein was extracted from normal and mastitis tissue using the Nuclear and Cytoplasmic Protein Extraction Kit (thermo) according to the manufacturer's instructions. Protein was transferred onto polyvinylidene fluoride membranes and blocked overnight in 5% BSA in Tris-buffered saline with Tween 20 at 4°C. Membranes were incubated for 2 h at room temperature with the appropriate primary antibody. After three 15-min washes in Tris-buffered saline with Tween20, membranes were incubated with an appropriate secondary antibody conjugated to horseradish peroxidase diluted 1:1000 in block solution for 2 h. After three washes, blots were developed with ECL substrate using the Western Blotting Detection System (Amersham Life Science,UK).

6. Statistical analysis

All data were obtained from one independent experiment carried out in triplicate. The fold changes of genes between healthy and mastitis cows were calculated using fold Change = $2^{-\Delta\Delta Ct(\text{mastitis-healthy})} = 2^{-(\Delta Ct(\text{mastitis})-\Delta Ct(\text{healthy}))}$ [20]. Data are presented as mean + SEM, main and interactive effects were analyzed by the independent-samples t-test using SPSS16.0 software. P < 0.05 was considered statistically significant.

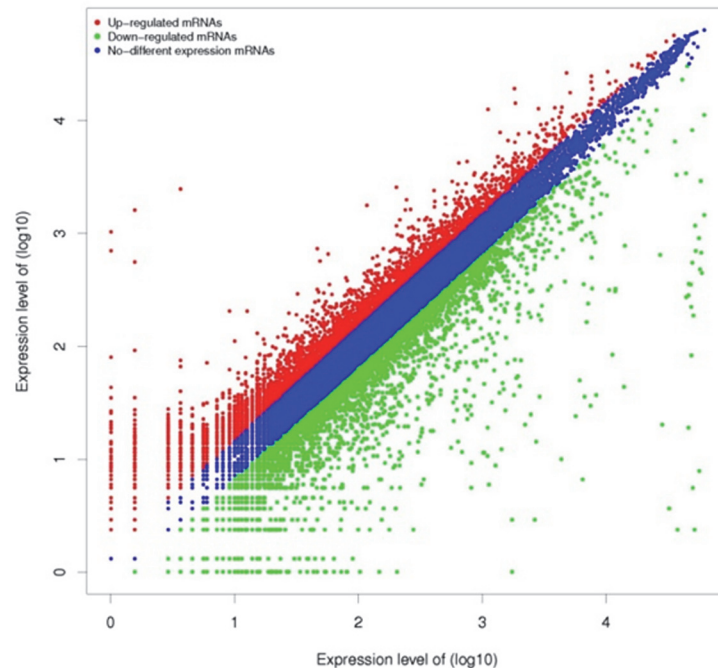


Fig 1. Log-Log Scatter Plot of normal and mastitis mammary tissues. Red replaces higher expressed genes in mastitis tissue. Green replaces the higher expressed genes in normal tissue.

doi:10.1371/journal.pone.0118458.g001

Results

1. Differentially expressed genes

After quantifying all hybridization spots, the signal intensity was plotted logarithmically. [Fig. 1](#) shows the scatter plot of microarray signals from normal and mastitis tissue. The expression levels of many genes differed between groups. Microarray data analysis indicated that 79 genes associated with the TLR4/NF- κ B signaling pathway were differentially expressed ($P < 0.01$) ([Fig. 2](#)). Comparison of the two groups revealed that 19 genes from the TLR4/NF- κ B signaling pathway were up-regulated (≥ 2 fold), whereas, 29 genes were down-regulated in mastitis tissue (≥ 2 fold) ([Table 2](#)).

2. Results of GO and KEGG analyses

In order to clarify the different biological patterns of the two groups, genes of the TLR4/NF- κ B signaling pathway were individually analyzed by GO and KEGG, with criteria for significance set at $P < 0.01$.

GO analysis ([Fig. 3A](#)) showed that the up-regulated genes in the mammary tissue from healthy cows were largely associated with: MAPKKK cascade, protein kinase cascade, JNK cascade, macromolecule biosynthetic process, cellular biosynthetic process, macromolecule metabolic process, etc. The up-regulated genes in the mammary tissue from cows with mastitis ([Fig. 3B](#)) were mainly implicated in: MAPKKK cascade, protein kinase cascade, JNK cascade, organic substance, inflammatory response, ATP binding, adenyly nucleotide binding and adenylylribo-nucleotide binding.

Gene expression changes that reached statistical significance were analyzed in KEGG ([Fig. 4](#)). [Fig. 4A](#) shows that up-regulated genes in healthy mammary tissue samples are associated with the following signaling pathways: GnRH, neurotrophin, T cell receptor, MAPK,

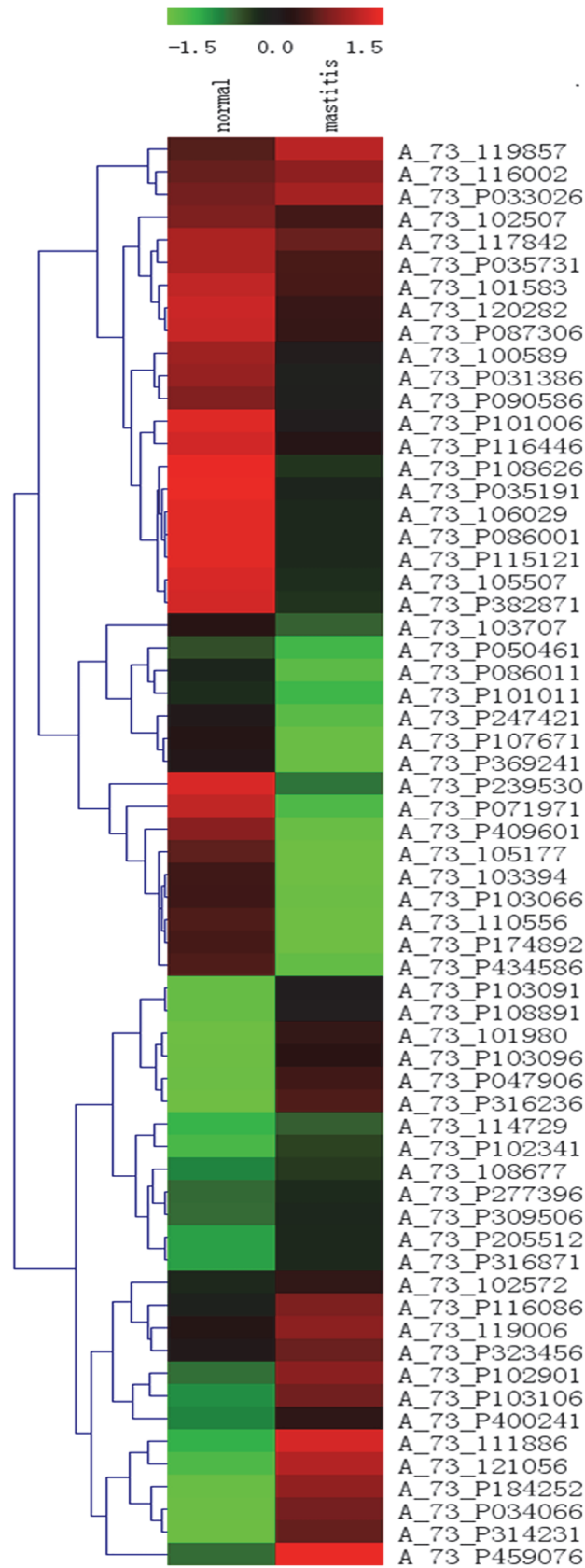


Fig 2. Analysis of 79 differently expressed genes of TLR4/ NF- κ B signaling pathway in normal and mastitis mammary tissues ($P < 0.01$). The microarray heat map demonstrates the log₂ ratio of gene signal difference between normal and mastitis tissues. Up-regulated genes are shown in red, while down-regulated genes are shown in green. The left column on the figure represents the level of expression in normal mammary tissue, while the right column represents the level of corresponding gene expression in mastitis mammary tissue.

doi:10.1371/journal.pone.0118458.g002

Fcepsilon RI, NOD-like receptor, RIG-I-like receptor, Toll-like receptor, pancreatic cancer and apoptosis. The up-regulated genes in tissue samples from cows with mastitis were involved in the following pathways: neurotrophin, T cell receptor, MAPK, Fc epsilon RI, NOD-like receptor, RIG-I-like receptor, adipocytokine, chemokine, B cell, cytosolic DNA-sensing Toll-like receptor signaling pathway, pancreatic cancer and apoptosis ([Fig. 4B](#)).

3. RT-PCR

In order to validate the microarray chips results, 10 genes associated with the TLR4/NF- κ B signaling pathway were analyzed using RT-PCR. As [Fig. 5A](#) shows, TLR4, MyD88, IL-6, and IL-10 expression levels were increased in mastitis tissue. On the contrary, CD14, TNF- α , MD-2, IL-1 β , NF- κ B, and IL-12 expression levels were decreased in mastitis tissue with respect to normal tissue. Thus, the RT-PCR results were in accordance with the gene chip findings ([Fig. 5B](#)).

4. Western blot

To examine protein level expression changes, four molecules were measured using western blot analysis. As [Fig. 6](#) shows, CD14, MD-2, and NF- κ B protein expression was decreased in mastitis tissue. While, TLR4 protein expression was increased in mastitis tissue. The Western blot results demonstrate that the protein level expression changes are consistent with changes seen at the transcript level obtained by RT-PCR.

Discussion

Bovine mastitis, an inflammation reaction of the mammary gland, is one of the most costly diseases in the dairy industry. Mastitis can be caused by many pathogenic bacteria, such as *E. coli*, *Streptococcus uberis*, and *Staphylococcus aureus*. In this study, clinical mastitis was the result of infection by gram-negative bacteria. Histological assessment of mammary gland tissue from healthy cows showed that the glandular bubble chamber was full of milk and free of hyperplasia and inflammation. The mammary glands of cows with mastitis showed cavity deformation, or were filled with vacuoles of homogeneous exudate mixed with shedding epithelial and inflammatory cells. In addition, there was acini cell degeneration, atrophy, edema, and interstitial tissue hyperplasia present.

GO biological process analysis revealed that macromolecule biosynthetic, protein catabolic and cellular biosynthetic processes gather in higher levels in healthy tissue. The KEGG results revealed that genes related to the GnRH signaling pathway were more highly expressed in healthy tissue. These results imply that there are more functional associations in healthy tissue compared with mastitis tissue.

Mastitis is a serious infective disease that causes vast economic losses in the dairy industry. Alain's survey shows that about 40–50% of clinical mastitis is caused by *E. coli* [21]. TLR4, one of the best characterized TLRs, recognizes LPS from gram-negative bacteria [22]. Activation of TLR4 is known to result in the activation of the NF- κ B signaling pathway, and finally, results in the release of pro-inflammatory cytokines [23]. NF- κ B is an important transcription factor located downstream of the TLR4-mediated signaling pathway. NF- κ B plays an essential role in

Table 2. Differentially expressed genes in mastitis mammary tissues with respect to normal mammary tissues.

Gene symbol	Representative public ID	Normal	Mastitis	Fold-change [log ₂ (m/n)]
Up-regulated genes in mastitis mammary tissues				
TICAM2	NM_001046456	8.05	9.35	1.30
PIK3CA	NM_174574	4.63	5.96	1.33
STAT1	NM_001077900	0.65	2.06	1.41
IL10	NM_174088	10.06	11.55	1.49
IKBKG	NM_174354	-6.64	-4.98	1.66
MAPK11	NM_001080335	-6.64	-4.98	1.66
IFNAR2	NM_174553	2.48	6.85	1.77
TLR6	NM_001001159	2.48	3.32	1.78
CASP8	NM_001045970	-1.41	0.40	1.81
TAB2	NM_001192372	-1.41	0.40	1.81
MAPK8	NM_001192974	1.65	4.29	2.75
MAP2K2	NM_001038071	-1.41	2.06	3.47
MAPK10	NM_001083728	-1.41	2.48	3.90
MyD88	NM_001014382	-4.98	1.25	6.23
TLR9	NM_183081	-6.64	0.40	7.04
IRAK1	NM_001040555	-4.98	2.58	7.56
TLR4	NM_174198	-6.64	2.19	8.83
TLR7	NM_001033761	-6.64	2.58	9.22
IL6ST	XM_600430	-1.41	0.40	1.81
Down-regulated genes in mastitis mammary tissues				
CD14 molecule	NM_174008	2.48	-4.98	-7.47
CXCL11	CK959898	1.87	-4.98	-6.86
MAPK14	NM_001102174	1.87	-4.98	-6.86
TLR3	NM_001008664	0.65	-4.98	-5.63
MAP2K3	NM_001083693	9.31	3.84	-5.47
NFKB1	NM_001076409	11.56	7.84	-3.72
IFNAC	NM_174085	-1.41	-4.98	-3.57
IFNW1	NM_174351	-1.41	-4.98	-3.57
MAP2K6	NM_001034045	-1.41	-4.98	-3.57
TLR8	NM_001033937	-1.41	-4.98	-3.57
CXCL10	NM_001046551	6.49	2.98	-3.51
IRF5	NM_001035465	3.79	0.40	-3.40
TNF	NM_173966	7.72	5.00	-2.72
IL12A	CB168830	5.96	3.54	-2.42
AKT1	NM_173986	3.32	1.25	-2.07
RELA	NM_001080242	5.21	3.32	-1.89
IRF7	NM_001105040	11.28	9.46	-1.82
IKBKE	NM_001046345	2.19	0.40	-1.79
NFKBIA	NM_001045868	5.40	3.66	-1.74
TLR1	NM_001046504	4.78	2.58	-1.65
JUN	NM_001077827	5.40	4.25	-1.54
TBK1	NM_001192755	5.79	3.32	-1.45
MAPK13	NM_001014947	5.96	4.82	-1.38
IL1B	NM_174093	7.43	6.14	-1.29
MAP3K7	NM_001081595	5.79	4.51	-1.29

(Continued)

Table 2. (Continued)

Gene symbol	Representative public ID	Normal	Mastitis	Fold-change [log2(m/n)]
PIK3CD	NM_001205548	12.65	11.45	-1.19
FOS	NM_182786	1.54	0.40	-1.15
IRAK4	NM_001075998	3.19	2.06	-1.13
IRF3	NM_001029845	3.62	2.58	-1.04

doi:10.1371/journal.pone.0118458.t002

regulating the immune response, including the gene expression of many inflammatory cytokines [24]. CD14, which is found on neutrophils and macrophages in the mammary gland, is another important pathogen receptor [25]. CD14 binds LPS-protein complexes and induces the synthesis and release of TNF-α [26]. In turn, TNF-α controls the activation of two different downstream signaling pathways, AP1 and NF-κB [27]. Hence, a deficiency in TNF-α induction may impair NF-κB activation, which could subsequently turn off an important arm of the immune defense [28]. TNF-α is the earliest primary endogenous mediator of the inflammatory process [29]. IL-1β, a subtype of IL-1, can increase TNF-α levels [30]. IL-6 is a pleiotropic cytokine produced by monocytes and macrophages that is involved in vascular inflammation [31].

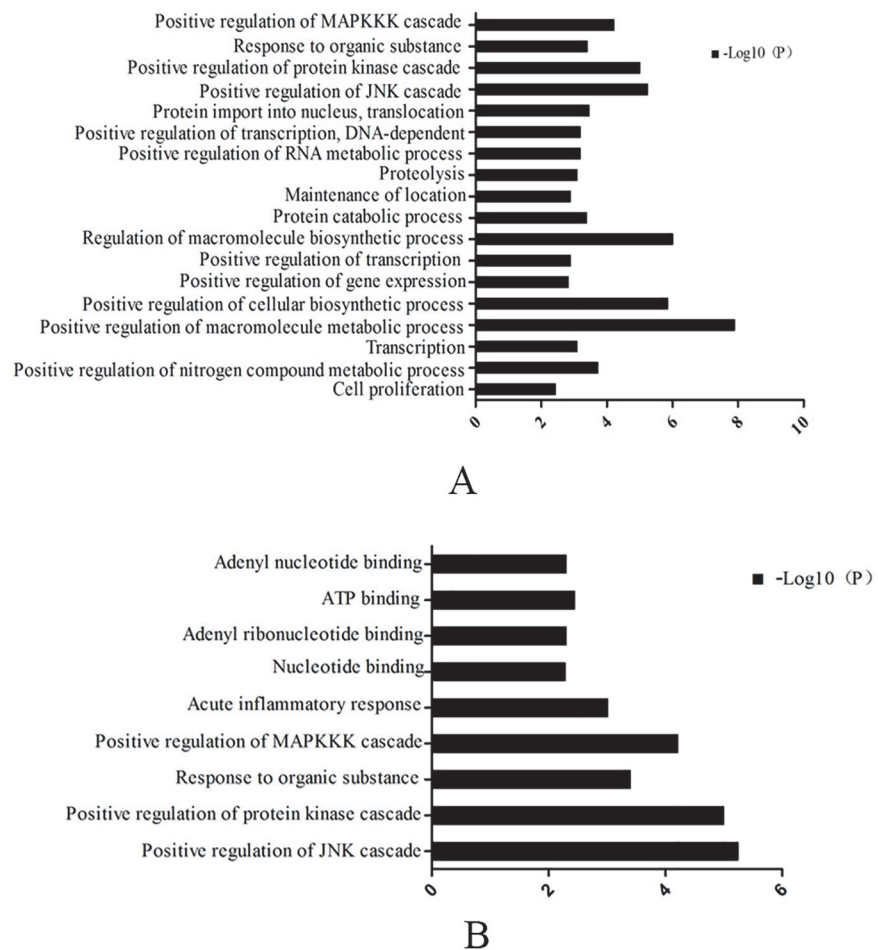


Fig 3. Biological process analyzed of genes that changed two-fold ≥ 2 folds in normal (A) and mastitis mammary tissue (B) by Gene ontology analysis (P values < 0.01).

doi:10.1371/journal.pone.0118458.g003

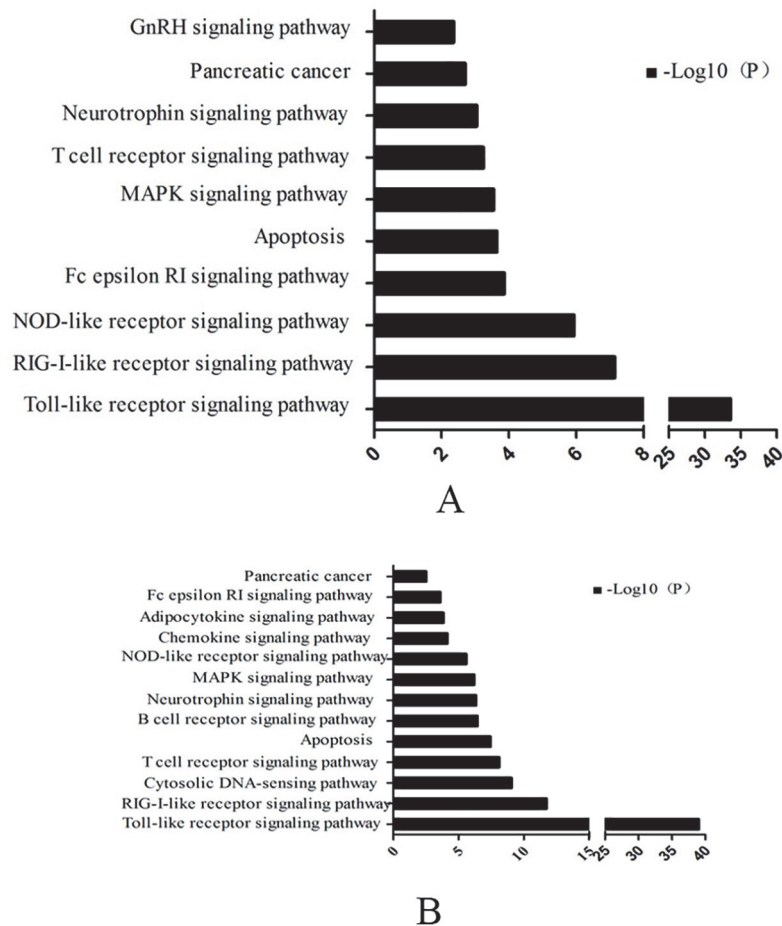


Fig 4. Biological process analyzed of genes that changed two-fold ≥ 2 folds in normal (A) and mastitis mammary tissue (B) by Gene KEGG analysis (P values < 0.01).

doi:10.1371/journal.pone.0118458.g004

Fu et al. [32] found that LPS-induced mastitis in mice results in the release of pro-inflammatory cytokines such as TNF- α , IL-1 β and IL-6, which can damage mammary tissue [33,34]. IL-12 is naturally produced by dendritic cells and macrophages. It has anti-angiogenic activity, which it elicits by increasing production of IFN- γ [35]. IL-12 was reported to be significantly elevated in the mammary gland 24 hours after being experimentally infected with *Staphylococcus aureus* in cattle [36]. In the present study, CD14, TNF- α , MD-2, IL-1 β , NF- κ B, and IL-12 gene expression was decreased in tissue affected by mastitis compared to normal mammary tissue, which is consistent with suppression of NF- κ B activity and pro-inflammatory cytokine production. The results indicate that these immune-related genes participate in the immune response via the NF- κ B signaling pathway to combat bacterial invasion.

There are many adapter proteins that participate in TLR4 signal transduction, including MyD88. Structurally, MyD88 consists of a carboxy terminal MyD88 TIR (Toll/IL-1R) domain, amino-terminal death domain (DD), and a short linker sequence. MyD88 associates with TLR4 to form a homologous dimer at the TIR and DD domains. TLR4/MyD88 signaling activates downstream kinases that degrade I κ B, which normally sequesters NF- κ B in the cytoplasm [24]. Once freed, NF- κ B translocates to the nucleus, where it binds κ B sites in the promoter region of genes encoding pro-inflammatory cytokines, including IL-6 [37]. In addition, MyD88 signaling activates the mitogen-activated protein kinase (MAPK) cascade [38].

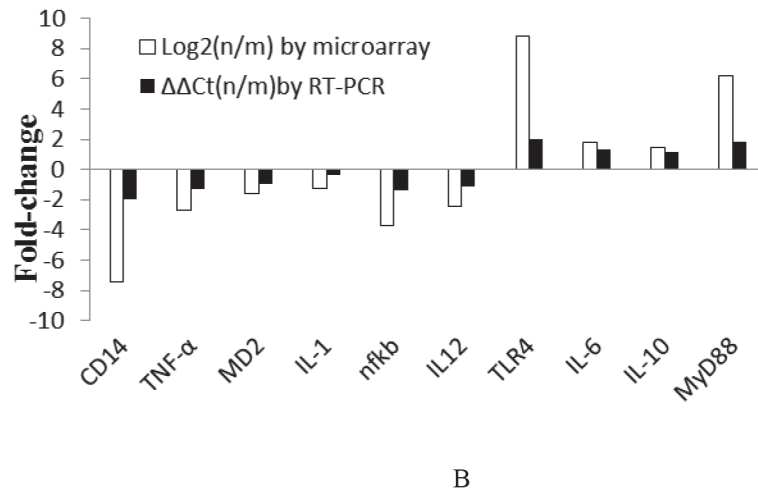
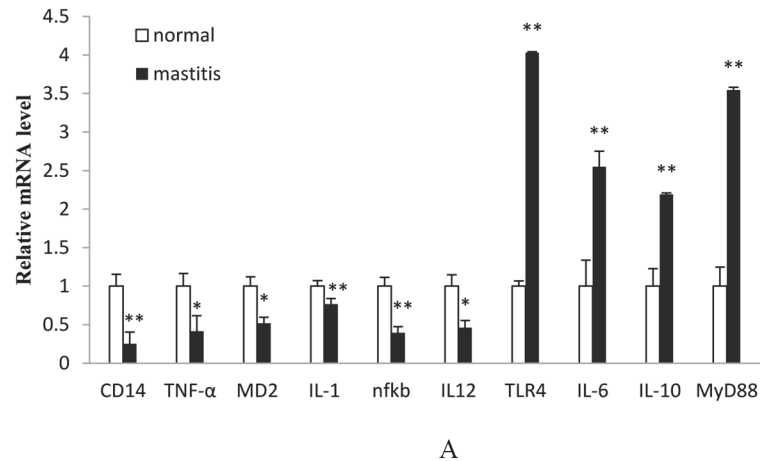


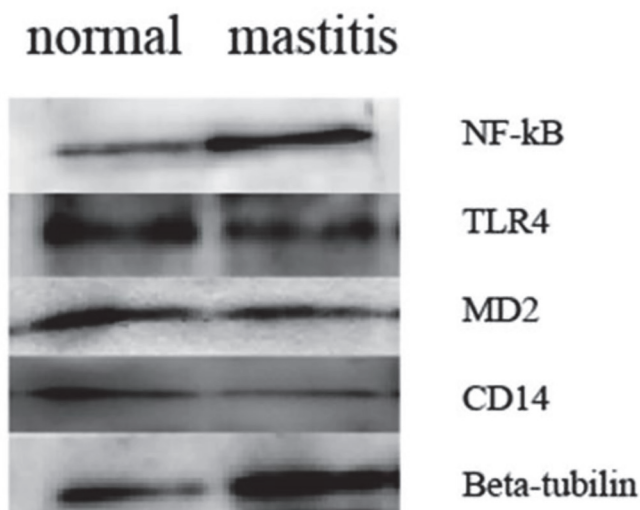
Fig 5. Microarray results confirmed by RT-PCR. A. RT-PCR results of genes selected. B. Comparison of RT-PCR findings to microarray results by fold-change of ten-selected genes. N = normal tissue and m = mastitis tissue. Note: a single asterisk indicates a statistical difference ($P < 0.05$), and a double asterisk indicates a statistical difference ($P < 0.01$).

doi:10.1371/journal.pone.0118458.g005

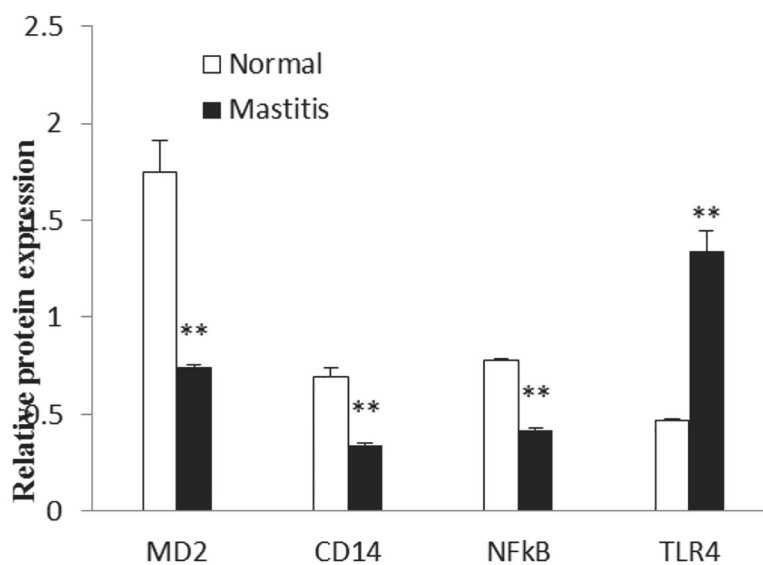
On the other hand, IL-10, a powerful anti-inflammatory cytokine, plays an important role in improving survival in animals challenged with LPS. For example, one study demonstrated that pretreatment with Paeonol (PAE), an anti-inflammatory agent, enhanced serum IL-10 levels in LPS-challenged mice [39]. As Fig. 4A demonstrates, TLR4, MyD88, IL-6, and IL-10 were highly expressed in bovine mastitis tissue. Our results are in agreement with studies showing activation of TLR4.

Taken together, these data suggest that the immune response of Chinese Holstein cattle with mastitis may occur by a MyD88-dependent channel that is mediated by TLR4/ NF-κB. However, further studies are needed to validate and expand upon the current results.

In conclusion, the present study showed differential gene expression of the TLR4/ NF-κB signaling pathway in the mammary tissue of Chinese Holstein cattle with mastitis. Gene-chip microarray indicated that 79 genes were significantly changed compared to normal mammary gland tissue. We also analyzed the KEGG and GO term enrichment of the target genes using the DAVID bioinformatics resource and the Term enrichment tool. These data suggest that the



A



B

Fig 6. Microarray results confirmed by western blot. Note: a double asterisk indicates a statistical difference ($P < 0.01$).

doi:10.1371/journal.pone.0118458.g006

mammary gland secretes cytokines and chemokines in response to gram-negative bacteria via the TLR4/ NF-κB pathway. Further studies may help to clarify the molecular mechanism involved in the TLR4/ NF-κB signaling pathway.

Supporting Information

S1 Appendix. The mammary gland of healthy dairy cows (A): the glandular bubble chamber was full of milk and free of hyperplasia and inflammation; the mammary gland of dairy cows with mastitis (B): as arrows showed acinus cavity deformation, or filled with vacuoles of homogeneous exudate mixed with shedding of epithelial and inflammatory cells, H. Ex100. The results of milk CMT and SCC number. (DOCX)

Author Contributions

Conceived and designed the experiments: JW LL GW. Performed the experiments: JW YS SH JT PY. Analyzed the data: JW. Contributed reagents/materials/analysis tools: JW GW. Wrote the paper: JW.

References

1. Rinaldi M, Li RW, Capuco AV. Mastitis associated transcriptomic disruptions in cattle. *Veterinary Immunology and Immunopathology*. 2010; 138:267–279. doi: [10.1016/j.vetimm.2010.10.005](https://doi.org/10.1016/j.vetimm.2010.10.005) PMID: [21040982](https://pubmed.ncbi.nlm.nih.gov/21040982/)
2. Wellnitz O, Bruckmaier RM. The innate immune response of the bovine mammary gland to bacterial infection. *The Veterinary Journal*. 2012; 192:148–152. doi: [10.1016/j.tvjl.2011.09.013](https://doi.org/10.1016/j.tvjl.2011.09.013) PMID: [22498784](https://pubmed.ncbi.nlm.nih.gov/22498784/)
3. Looor JJ, Moyes KM, Bionaz M. Functional adaptations of the transcriptome to mastitis-causing pathogens: The mammary gland and beyond. *J. Mammary Gland Biol. Neoplasia*. 2011; 16:305–322. doi: [10.1007/s10911-011-9232-2](https://doi.org/10.1007/s10911-011-9232-2) PMID: [21968536](https://pubmed.ncbi.nlm.nih.gov/21968536/)
4. Miyake K. Innate immune sensing of pathogens and danger signals by cell surface toll-like receptors. *Semin Immunol*. 2007; 19:3–10.
5. Medzhitov R, Preston-Hurlburt P, Janeway CA. A human homologue of the Drosophila toll protein signals activation of adaptive immunity. *Nature*. 1997; 388:394–397. PMID: [9237759](https://pubmed.ncbi.nlm.nih.gov/9237759/)
6. Akira S, Takeda K, Kaisho T. Toll-like receptors: critical proteins linking innate and acquired immunity. *Nat Immunol*. 2007; 2:675–680.
7. Kuhn H, Petzold K, Hammerschmidt S, Wirtz H. Interaction of cyclic mechanical stretch and toll-like receptor4-mediated innate immunity in rat alveolar type II cells. *Respirology*. 2014; 19: 67–73. doi: [10.1111/resp.12149](https://doi.org/10.1111/resp.12149) PMID: [23796194](https://pubmed.ncbi.nlm.nih.gov/23796194/)
8. Yang J, Yang J, Ding JW, Chen LH, Wang YL, Li S, et al. Sequential expression of TLR4 and its effects on the myocardium of rats with myocardial ischemia-reperfusion injury. *Inflammation*. 2008; 31:304–312. doi: [10.1007/s10753-008-9079-x](https://doi.org/10.1007/s10753-008-9079-x) PMID: [18677579](https://pubmed.ncbi.nlm.nih.gov/18677579/)
9. O'Neill LA, Bowie AG. The family of five: TIR-domain-containing adaptors in Toll-like receptor signaling. *Nat Rev Immunol*. 2007; 7:353–364. PMID: [17457343](https://pubmed.ncbi.nlm.nih.gov/17457343/)
10. Fitzgerald KA, Palsson-McDermott EM, Bowie AG, Jefferies CA, Mansell AS, Brady G, et al. Mal (MyD88-adaptor-like) is required for Toll-like receptor-4 signal transduction. *Nature*. 2001; 413:78–83. PMID: [11544529](https://pubmed.ncbi.nlm.nih.gov/11544529/)
11. Gilbert FB, Cunha P, Jensen K, Glass EJ, Foucras G, Robert-Granié C, et al. Differential response of bovine mammary epithelial cells to Staphylococcus aureus or Escherichia coli agonists of the innate immune system. *Veterinary research*. 2013; 44:40. doi: [10.1186/1297-9716-44-40](https://doi.org/10.1186/1297-9716-44-40) PMID: [23758654](https://pubmed.ncbi.nlm.nih.gov/23758654/)
12. Sipka A, Klaessig S, Duhamel GE, Swinkels J, Rainard P, Schukken Y. Impact of Intramammary Treatment on Gene Expression Profiles in Bovine Escherichia coli Mastitis. *Plos one*. 2014; 9(1):e85579. doi: [10.1371/journal.pone.0085579](https://doi.org/10.1371/journal.pone.0085579) PMID: [24454893](https://pubmed.ncbi.nlm.nih.gov/24454893/)
13. Blasi E, Ardizzoni A, Colombari B, Neglia R, Baschieri C, Peppoloni S, et al. NF- κ B activation and p38 phosphorylation in microglial cells infected with Leptospira or exposed to partially purified leptospiral lipoproteins. *Microb Pathog*. 2007; 42:80–7. PMID: [17189679](https://pubmed.ncbi.nlm.nih.gov/17189679/)
14. Liu SL, Kielian T. Microglial activation by Citrobacter koseri is mediated by TLR4-and MyD88-dependent pathways. *J Immunol*. 2009; 183:5537–47. doi: [10.4049/jimmunol.0900083](https://doi.org/10.4049/jimmunol.0900083) PMID: [19812209](https://pubmed.ncbi.nlm.nih.gov/19812209/)
15. Wei Z, Zhu NS, Bai D, Miao JF, Zou SX. The crosstalk between Dectin1 and TLR4 via NF- κ B subunits p65/RelB in mammary epithelial cells. *International Immunopharmacology*. Available: <http://dx.doi.org/10.1016/j.intimp.2014.09.004>.

16. Wei ZK, Zhou ES, Guo CM, Fu YH, Yu YQ, Li YM, et al. Thymol inhibits *Staphylococcus aureus* internalization into bovine mammary epithelial cells by inhibiting NF- κ B activation. *Microbial Pathogenesis*. 2014; 1–5.
17. Daly KA, Mailer SL, Digby MR, Lefevre C, Thomson P, Deane E, et al. Molecular analysis of tamar (Macropus eugenii) mammary epithelial cells stimulated with lipopolysaccharide and lipoteichoic acid. *Vet Immunol Immunopathol*. 2009; 129:36–48. doi: [10.1016/j.vetimm.2008.12.001](https://doi.org/10.1016/j.vetimm.2008.12.001) PMID: [19157568](https://pubmed.ncbi.nlm.nih.gov/19157568/)
18. Griesbeck-Zilch B, Osman M, Kuhn C, Schwerin M, Bruckmaier RH. Analysis of key molecules of the innate immune system in mammary epithelial cells isolated from marker-assisted and conventionally selected cattle. *J Dairy Sci*. 2009; 92:4621–4633. doi: [10.3168/jds.2008-1954](https://doi.org/10.3168/jds.2008-1954) PMID: [19700725](https://pubmed.ncbi.nlm.nih.gov/19700725/)
19. De-Ketelaere A, Goossens K, Peelman L, Burvenich C. Technical note: Validation of internal control genes for gene expression analysis in bovine polymorphonuclear leukocytes. *J Dairy Sci*. 2006; 89:4066–4069. PMID: [16960083](https://pubmed.ncbi.nlm.nih.gov/16960083/)
20. Livak KJ, Schmittgen TD. Analysis of relative gene expression data using real-time quantitative PCR and the $2^{-\Delta\Delta Ct}$ method. *Methods*. 2001; 25, 402–408. PMID: [11846609](https://pubmed.ncbi.nlm.nih.gov/11846609/)
21. Alain K, Karrow NA, Thibault C, St-Pierre J, Lessard M, Bissonnette N. Osteopontin: an early innate immune marker of *Escherichia coli* mastitis harbors genetic polymorphisms with possible links with resistance to mastitis. *BMC Genomics*. 2009; 10:444. doi: [10.1186/1471-2164-10-444](https://doi.org/10.1186/1471-2164-10-444) PMID: [19765294](https://pubmed.ncbi.nlm.nih.gov/19765294/)
22. Kayagaki N, Wong MT, Stowe IB, Ramani SR, Gonzalez LC, Akashi-Takamura S, et al. Noncanonical inflammasome activation by intracellular LPS independent of TLR4. *Science*. 2013; 341: 1246–1249. doi: [10.1126/science.1240248](https://doi.org/10.1126/science.1240248) PMID: [23887873](https://pubmed.ncbi.nlm.nih.gov/23887873/)
23. Medzhitov R, Kagan JC. Phosphoinositide-mediated adaptor recruitment controls Toll-like receptor signaling. *Cell*. 2006; 125: 943–55. PMID: [16751103](https://pubmed.ncbi.nlm.nih.gov/16751103/)
24. Putra ABN, Nishi K, Shiraishi R, Doi M, Sugahara T. Jellyfish collagen stimulates production of TNF- α and IL-6 by J774.1 cells through activation of NF- κ B and JNK via TLR4 signaling pathway. *Molecular Immunology*. 2014; 58:32–37. doi: [10.1016/j.molimm.2013.11.003](https://doi.org/10.1016/j.molimm.2013.11.003) PMID: [24291243](https://pubmed.ncbi.nlm.nih.gov/24291243/)
25. Sohn EJ, Paape MJ, Bannerman DD, Connor EE, Fetterer RH, Peters RR. Shedding of sCD14 by bovine neutrophils following activation with bacterial lipopolysaccharide results in down-regulation of IL-8. *Veterinary Research*. 2007; 38, 95–108. PMID: [17156740](https://pubmed.ncbi.nlm.nih.gov/17156740/)
26. Paape MJ, Mehrzad J, Zhao X, Detileux J, Burvenich C. Defense of the bovine mammary gland by polymorpho nuclear neutrophil leukocytes. *Journal of Mammary Gland Biology and Neoplasia*. 2002; 7:109–121. PMID: [12463734](https://pubmed.ncbi.nlm.nih.gov/12463734/)
27. Tian B, Nowak DE, Jamaluddin M, Wang S, Brasier AR. Identification of direct genomic targets downstream of the nuclear factor- κ B transcription factor mediating tumor necrosis factor signaling. *J Biol Chem*. 2005b; 280:17435–17448. PMID: [15722553](https://pubmed.ncbi.nlm.nih.gov/15722553/)
28. Hacker H, Karin M. Regulation and function of IKK and IKK-related kinases. *Sci STKE*. 2006; re13.
29. Wu Y, Zhou BP. TNF- α /NF- κ B/snail pathway in cancer cell migration and invasion. *British Journal of Cancer*. 2010; 102: 639–644. doi: [10.1038/sj.bjc.6605530](https://doi.org/10.1038/sj.bjc.6605530) PMID: [20087353](https://pubmed.ncbi.nlm.nih.gov/20087353/)
30. Wu X, Lu Y, Dong Y, Zhang G, Zhang YY, Xu ZP, et al. The inhalation anesthetic isoflurane increases levels of pro-inflammatory TNF- α , IL-6 and IL-1 β . *Neurobiology of Aging*. 2012; 33(7); 1364–1378. doi: [10.1016/j.neurobiolaging.2010.11.002](https://doi.org/10.1016/j.neurobiolaging.2010.11.002) PMID: [21190757](https://pubmed.ncbi.nlm.nih.gov/21190757/)
31. Kaplanski G, Marin V, Montero-Julian F, Mantovani A, Farnarier C. IL-6: a regulator of the transition from neutrophil to monocyte recruitment during inflammation. *Trends Immunol*. 2003; 24:25–9. PMID: [12495721](https://pubmed.ncbi.nlm.nih.gov/12495721/)
32. Fu Y, Zhou E, Liu Z, Li F, Liang D, Liu B, et al. *Staphylococcus aureus* and *Escherichia coli* elicit different innate immune responses from bovine mammary epithelial cells. *Vet Immunol Immunopathol*. 2013; 155:245–52. doi: [10.1016/j.vetimm.2013.08.003](https://doi.org/10.1016/j.vetimm.2013.08.003) PMID: [24018311](https://pubmed.ncbi.nlm.nih.gov/24018311/)
33. Ibeagha-Awemu EM, Lee JW, Ibeagha AE, Bannerman DD, Paape MJ, Zhao X. Bacterial lipopolysaccharide induces increased expression of Toll-like receptor (TLR) 4 and downstream TLR signaling molecules in bovine mammary epithelial cells. *Vet Res*. 2008; 39.
34. Hoeben D, Burvenich C, Trevisi E, Bertoni G, Hamann J, Bruckmaier RM, et al. Role of endotoxin and TNF-alpha in the pathogenesis of experimentally induced coliform mastitis in periparturient cows. *J Dairy Res*. 2000; 67:503–14. PMID: [11131064](https://pubmed.ncbi.nlm.nih.gov/11131064/)
35. Krishnamoorthy P. Comparative pathology of mastitis in mouse model using different isolates of coagulase negative staphylococcus species. *Indian Journal of Veterinary Pathology*. 2013; 37(2).
36. Bhatt VD, Khade PS, Tarate SB, Tripathi AK, Nauriyal DS, Rank DN. Cytokine expression pattern in milk somatic cells of subclinical mastitis-affected cattle analyzed by real time PCR. *Korean J Vet Res*. 2012; 52(4):231 ~ 238.
37. Gronin JG, Turner ML, Goetze L, Bryant CE, Sheldon M. Toll-Like Receptor 4 and MYD88-Dependent Signaling Mechanisms of the Innate Immune System Are Essential for the Response to

Lipopolysaccharide by Epithelial and Stromal Cells of the Bovine Endometrium. *Biology of reproduction*. 2012; 86(2):51, 1–9. doi: [10.1095/biolreprod.111.092718](https://doi.org/10.1095/biolreprod.111.092718) PMID: [22053092](https://pubmed.ncbi.nlm.nih.gov/22053092/)

38. Akira S, Uematsu S, Takeuchi O. Pathogen recognition and innate immunity. *Cell*. 2006; 124:783–801. PMID: [16497588](https://pubmed.ncbi.nlm.nih.gov/16497588/)
39. Cao WJ, Wei ZG, Liu JJ, Yuan WG, Peng XM. Paeoniflorin improves survival in LPS-challenged mice through the suppression of TNF- α and IL-1 β release and augmentation of IL-10 production. *International Immunopharmacology*. 2011; 11:172–178. doi: [10.1016/j.intimp.2010.11.012](https://doi.org/10.1016/j.intimp.2010.11.012) PMID: [21094290](https://pubmed.ncbi.nlm.nih.gov/21094290/)