



Maternal Exposure to Low Levels of Corticosterone during Lactation Protects against Experimental Inflammatory Colitis-Induced Damage in Adult Rat Offspring

Carla Petrella^{1*}, Chiara Giuli¹, Simona Agostini², Valérie Bacquie², Manuela Zinni¹, Vassilia Theodorou², Maria Broccardo¹, Paola Casolini¹, Giovanna Improta¹

1 Department of Physiology and Pharmacology "V. Erspamer", Sapienza University of Rome, Rome, Italy, **2** INRA, El-Purpan, UMR 1331 TOXALIM Neuro-Gastroenterology and Nutrition Team, Toulouse, France

Abstract

Opposing emotional events (negative/trauma or positive/maternal care) during the postnatal period may differentially influence vulnerability to the effects of stress later in life. The development and course of intestinal disorders such as inflammatory bowel disease are negatively affected by persistent stress, but to date the role of positive life events on these pathologies has been entirely unknown. In the present study, the effect of early life beneficial experiences in the development of intestinal dysfunctions, where inflammation and stress stimuli play a primary role, was investigated. As a "positive" experimental model we used adult male rat progeny nursed by mothers whose drinking water was supplemented with moderate doses of corticosterone (CORT) (0.2 mg/ml) during the lactation period. Such animals have been generally shown to cope better with different environmental situations during life. The susceptibility to inflammatory experimental colitis induced by intracolonic infusion of TNBS (2,4,6-trinitrobenzenesulphonic acid) was investigated in CORT-nursed rats in comparison with control rats. This mild increase in maternal corticosterone during lactation induced, in CORT-nursed rats, a long lasting protective effect on TNBS-colitis, characterized by improvements in some indices of the disease (increased colonic myeloperoxidase activity, loss of body weight and food intake) and by the involvement of endogenous peripheral pathways known to participate in intestinal disorder development (lower plasma corticosterone levels and colonic mast cell degranulation, alterations in the colonic expression of both corticotrophin releasing factor/CRF and its receptor/CRH-1R). All these findings contribute to suggesting that the reduced vulnerability to TNBS-colitis in CORT-nursed rats is due to recovery from the colonic mucosal barrier dysfunction. Such long lasting changes induced by mild hormonal manipulation during lactation, making the adult also better adapted to colonic inflammatory stress, constitute a useful experimental model to investigate the etiopathogenetic mechanisms and therapeutic treatments of some gastrointestinal diseases.

Citation: Petrella C, Giuli C, Agostini S, Bacquie V, Zinni M, et al. (2014) Maternal Exposure to Low Levels of Corticosterone during Lactation Protects against Experimental Inflammatory Colitis-Induced Damage in Adult Rat Offspring. PLoS ONE 9(11): e113389. doi:10.1371/journal.pone.0113389

Editor: Jörn Karhausen, Duke University Medical Center, United States of America

Received: August 10, 2014; **Accepted:** October 25, 2014; **Published:** November 18, 2014

Copyright: © 2014 Petrella et al. This is an open-access article distributed under the terms of the Creative Commons Attribution License, which permits unrestricted use, distribution, and reproduction in any medium, provided the original author and source are credited.

Data Availability: The authors confirm that all data underlying the findings are fully available without restriction. All relevant data are within the paper.

Funding: The authors have no support or funding to report.

Competing Interests: The authors have declared that no competing interests exist.

* Email: carla.petrella@uniroma1.it

Introduction

Early life experiences profoundly influence the later development, the structure and function of an organism. This phenomenon, called "developmental programming," is a process whereby an environmental factor acting during a sensitive or vulnerable developmental period exerts effects that, in some cases, will persist throughout life.

Adaptive or maladaptive responses to environmental stressors reflect an animal's capacity to re-establish temporarily disrupted physiological homeostasis. A number of factors contribute to the qualitative nature of these responses such as: the intensity (high or low) and duration (acute or chronic) of stressors, the individual's ability to initiate an adaptive response, and the phase of the life when the stressor event occurs. In particular, concerning the latter

point, during postnatal life, a critical period for neuroendocrinological and behavioural development processes, different emotional events (negative/trauma or positive/maternal care) may influence, in opposite ways, vulnerability to the effects of stress later in life, possibly by inducing a persistent sensitization in stress-responsive neural circuits [1–5].

"Neonatal maternal deprivation" is one of the best known experimental animal models that well reproduces in rodents the consequence of traumatic experiences occurring in humans in early life. In particular, the stress evoked by altering mother–infant interactions during lactation causes the offspring, once adult, to develop a phenotype more susceptible to stress events and characterized by hyperactivation of the Hypothalamus – Pituitary – Adrenal (HPA) axis. Interestingly, the pathophysiological modifications observed in adult rats affect not only the behaviour

and the neuroendocrine system, but also the homeostasis of the gastrointestinal tract. In fact, adult rats separated early postnatally from their mothers have been found to be predisposed to colonic barrier dysfunction [6,7] and to have an enhanced mucosal response to stress [8]. These findings are in line with evidence that shows that adverse experiences early in life can have implications in the development and the clinical course of human intestinal disorders, including inflammatory bowel disease (IBD) and intestinal bowel syndrome (IBS) [9–11], where inflammatory and stress stimuli play primary roles [12,13].

On the other hand, experiences, during human infancy, involving dynamic, tender, and stimulating environments, may have positive long lasting effects on the quality of life, can serve as a source of resilience in the face of chronic stress [14,15], and tend to promote resistance to stress and diminish vulnerability to stress-induced illness [16,17]. In recent years, several experimental animal models have well represented this evidence. Environmental enrichment has been used as a procedure that might prevent some of the deleterious effects of stress [18,19]. Francis et al. [20] have furthermore demonstrated that environmental enrichment can reverse the effects of postnatal maternal separation on both endocrine and behavioural responses to stress. Moreover, the offspring of mothers displaying high levels of maternal care (such as licking and grooming), once adults, increased their exploratory behaviour and spatial memory and reduced their anxiety-like behaviour [21,22]. In our previous studies [23] conducted in rats, we have shown that offspring nursed by mothers with a mild hypercortisolemia (that reflects a form of mild environmental stimulation) develop the ability to cope better with different situations during life. In this animal model, the drinking water of mother rats during lactation was supplemented with corticosterone (0.2 mg/ml) [24,25]. Maternal corticosterone is in equilibrium between blood and milk in rodents [23–25], and the hormone is easily absorbed by the gastrointestinal tract of the pups, as the glucocorticoid permeability of the gut is very high in early postnatal life up to 17–18 days of age [25]. With this approach a moderate increase in corticosterone (mimicking mild stimulating stress) may be achieved in the mother as well as in the pups without disturbing them. The progeny of these mothers (CORT-nursed rats), once adults, showed improved learning capabilities, reduced fearfulness in anxiogenic situations and, more interestingly, resistance to ischemic neuronal damage [11,23]. The protective long-life effect of hormonal manipulation in CORT-nursed rats is strictly linked to a persistent hyporeactivity of the HPA axis due to an increased number of glucocorticoid receptors in the hippocampus, a recognized target of glucocorticoid negative feedback action [26,27].

To our knowledge, there have been no studies considering the effect of such a positive postnatal manipulation on the homeostasis of the gastrointestinal tract. Therefore, the aim of the present study was to investigate the susceptibility to inflammatory colitis induced by intracolonic infusion of TNBS (2,4,6-trinitrobenzenesulphonic acid) in adult CORT-nursed offspring.

The data presented in this work show the long lasting effect of mildly increased maternal corticosterone during lactation on TNBS colitis in three-month old male rats, and take into account the variations in some indices of the pathology (histological score, colonic MPO activity, body weight and food intake) and the involvement of the main peripheral endogenous systems: mast cells, glucocorticoids (GCs) and their receptors (GRs), corticotrophin releasing factor (CRF) and its receptor, CRH-1R, known to be involved in the onset and progression of colitis [10,28–33].

Taken together, these results demonstrate that a mild hormonal manipulation during lactation protects against the onset of TNBS-induced colitis.

Materials and Methods

Ethics Statement

All animal procedures were carried out according to EU Directive 86/609/EEC and to Italian legislation on animal experimentation. The experimental protocols were also approved by the Local Animal Care and Use Committee of Institut National de la Recherche Agronomique (authorization number MP/02/46/11/08).

CORT-nursed model

Female Wistar rats (Charles River, Calco, Italy) weighing 280–320 g were mated and then housed individually. The day after the birth, litters were culled to eight pups (four males and four females). Mothers of control rats were maintained on tap water, whereas mothers of CORT-nursed rats had ad libitum access to a solution of 0.2 mg/ml corticosterone hemisuccinate. Weaning was performed at 21 day of age, and animals were then housed three per cage. Three-month-old male CORT-nursed rats and their controls were used in this study. They were kept in a temperature-controlled room (21°C), and were allowed free access to water and food.

Experimental design

The first day of experiment (day 0), both controls (n = 24) and CORT-nursed (n = 24) animals were divided in two groups of 12 rats each one: 1) healthy rats, intracolonicly infused with saline, and 2) colitic rats, intracolonicly infused with TNBS (2,4,6-trinitrobenzenesulphonic acid). To avoid the litter effect, each litter contributed one or, maximum, two offspring per group. On the 4th day after TNBS and/or saline instillation all the animals were euthanized by CO₂ inhalation (till 13 PM) and, for each experimental group, colonic tissue and blood samples were collected.

Induction of experimental colitis

Overnight fasted control and CORT-nursed rats were anaesthetised by intraperitoneal injection of xilazine (0.6 mg/kg) and ketamine (120 mg/kg), and colitis was induced by an intra-colonic (IC) administration of TNBS at a dose of 30 mg/kg in 0.3 mL of 50% ethanol. Healthy rats were intracolonicly infused with 0.3 mL of saline. TNBS and/or saline were infused through a silicone catheter introduced in the distal colon, 6 cm into the anus as previously described [34].

Body weight and food intake

Animal body weight and food intake were registered on the day of IC instillation of TNBS or saline and on the day of sacrifice. The index of variation was expressed as difference between the final and the initial weight (g).

Histological evaluation

Intestinal length. After the sacrifice, entire colons were removed and rinsed with saline. Colonic length was evaluated, measuring the distance from the caecum to the anus.

Macroscopic damage. Immediately after sacrifice, colon samples were removed and rinsed with saline. Colonic damage was evaluated in double blind and expressed with a score that took into account the severity and extent of macroscopic lesions (hyperemia, ulcers), the presence and the extent of adhesions and

the occurrence of diarrhoea, according to a modified Wallace *et al.* scale [35].

Microscopic damage. Samples of distal colon were fixed in Dubosq-Brazil buffer, dehydrated and embedded in paraffin. Sections of 5 μm were stained with eosin-hemalun, and examined by light microscopy. The extent of histological damage was expressed according to the criteria described by Fabia R, *et al* [36]. Each parameter estimated was graded (0–3), depending upon the severity of the changes found: (0) no change, (1) mild, (2) moderated or (3) severe changes. Total damage was obtained by adding the individual scores.

Myeloperoxidase (MPO) activity assay

The activity of MPO, a marker of polymorphonuclear primary granules, was determined in colon tissue according to a previously described technique [37]. Immediately after sacrifice, a distal colonic segment (1 cm long) was taken off at 3 cm from the cecocolonic junction. It was suspended in potassium phosphate buffer (KH_2PO_4 44 mM, K_2HPO_4 6 mM, pH 6.0), homogenized on ice with Polytron (PCU-2, Kinematica GmbH, Lucerne, Switzerland) and submitted to three cycles of freezing and thawing. Homogenates were then centrifuged at 9000 *g* for 15 min at 4°C. The pellets were resuspended in hexadecyl trimethylammonium bromide buffer (0.5% (wt/vol) in potassium phosphate buffer) to release MPO from polymorphonuclear neutrophil primary granules. These suspensions were sonicated (Büchi, Flawil, Switzerland) on ice and centrifuged at 9000 *g* for 15 min at 4°C. Supernatant fractions were diluted in potassium phosphate buffer containing 0.167 mg o-dianisidine dihydrochloride/ml and 0.00005% (vol/vol) H_2O_2 . MPO from human neutrophils (Sigma, Saint Quentin Fallavier, France; 0.1 U/ml) was used as a standard. Changes in absorbance at 450 nm were recorded with a spectrophotometer (mc2UV, Safas, Monaco) every 10 s over 2 min. One unit of MPO activity was defined as the quantity of MPO degrading 1 μmol H_2O_2 $\text{min}^{-1}\text{ml}^{-1}$ at 25°C. Protein concentrations ($\mu\text{g}/\text{ml}$) were determined using a modified method of Lowry (Detergent Compatible Assay, BioRad, Ivry/Seine, France) and MPO activity was expressed as MPO units/g protein.

Corticosterone assay

Samples of blood (5 ml) were collected in tubes containing EDTA (200 $\mu\text{l}/5$ ml). After centrifugation at 3300 $\times g$ at 4°C for 20 min, plasma was removed and kept frozen at -20°C , till the time of the test. Samples were then processed for ELISA using commercial kits to determine plasma corticosterone concentrations (ELISA kits, Demeditec Diagnostic, Germany). Data were expressed as $\mu\text{g}/100$ ml.

Colonic mucosal GR expression

Colonic mucosa samples from control or CORT-nursed rats were stored frozen at -80°C . On the day of the experiment, tissue was sonicated at 4°C in 300 μl of high salt EPG buffer (1 mM EDTA, 20 mM phosphate buffer pH 7.4, 10% glycerol, 0.4 M NaCl, 5 mM dithiothreitol) containing protease inhibitors (phenylmethylsulfonyl fluoride 1 mM, leupeptin 10 $\mu\text{g}/\text{ml}$ and aprotinin 10 $\mu\text{g}/\text{ml}$). Protein concentrations were determined using the Bradford protein assay. Thirty micrograms of protein were re-suspended in sodium dodecyl sulfate (SDS)-bromophenol blue loading buffer with 0.7 M 2-mercaptoethanol. The samples were boiled for five minutes and separated on 8% SDS-polyacrylamide gels. After electrophoresis (Protean II xi System, Bio-Rad), the proteins were transferred to nitrocellulose membranes (Biorad) using a system of maxi transblot cell (BioRad) at 4°C. After transfer, blots were incubated in a solution (blocking

solution) containing Tris-buffered saline (TBS), 10% (w/v) Tween-20, 1% (w/v) non-fat milk and 1% (w/v) bovine serum albumin. Subsequently, blots were incubated overnight with rabbit anti-GR (1:10000, sc-1004, Santa Cruz Biotechnology Inc.) in blocking solution at 4°C. After incubation with the primary antibody, the blots were incubated with horseradish peroxidase-conjugated goat anti-rabbit (1:10000; Amersham Bioscience) for 1 h at room temperature ($21^\circ\text{C}\pm 2$). To ensure that each lane was loaded with an equivalent amount of protein, the blots were probed with an anti-actin serum (1:1000; Sigma) overnight at 4°C. Subsequently, blots were incubated with horseradish peroxidase-conjugated goat anti-mouse antibodies (1:5000; Amersham Bioscience) for 1 h at room temperature. Bands were visualized with an enhanced chemiluminescence system (Aurogene). After immunoblotting, digitized images of bands immunoreactive for target (GR) and control (actin) molecules were acquired, and the area of immunoreactivity corresponding to each band was measured, using the NIH ImageJ medical imaging software. A ratio of target to actin was then determined, and these values were compared for statistical significance.

Colonic CRF and CRH-1R immunostaining

Colon samples were immediately fixed in Dubosq-Brazil solution for 24 h, dehydrated in ethanol solution, embedded in paraffin blocks and cut into 5 mm sections. Paraffin sections were rehydrated and submerged in antigen retrieval solution (citrate buffer, 10 mM, pH 6, 95°C , 3 min). After inhibition of endogenous peroxidases with 0.6% H_2O_2 in PBS for 30 min, and incubation in blocking solution (phosphate-buffered saline containing 1% bovine serum albumin and 2% normal donkey serum), sections were incubate with goat anti-CRF (sc-21675; 1/100) or goat anti CRH-1R (sc-12383; 1/100) antibodies (Santa Cruz, Le Perray en Yvelines, France), overnight at 4°C. Subsequently, slides were incubated with biotinylated donkey anti-goat IgG immune serum (Interchim, Montluçon, France) 1/1000, for 30 min at room temperature, and added with ABC complexes coupled to peroxidase (Clinisciences, Nanterre, France). 3–3' diaminobenzidine (Clinisciences) was used as chromogen. CRF immunoreactive area/ mm^2 of mucosa and epithelium, CRH-1R immunoreactive area/ mm^2 of epithelium and CRH-1R. DO intensity in mucosal immune cells were quantified using Nikon-Elements-Ar software (Nikon, Champigny-sur-Marne, France).

Colonic rat mast cell protease II (RMCP II) immunostaining

Distal colonic samples were collected and fixed in 4% paraformaldehyde and immersed for 24 h in 30% of sucrose at 4°C. Samples were embedded in Neg 50 medium (MM France, Francheville, France) and frozen in isopentane at -45°C . Cryostat sections (7 μm) were post-fixed with acetone (10 min, -20°C) and hydrated in phosphate-buffered saline (PBS). After incubation in blocking solution (PBS-1% BSA-2% normal donkey serum), sections were incubated overnight at 4°C with sheep anti-rat mast cell protease (RMCP) II (1/500) (Moredun, Midlothian, UK) antibody. Sections were washed in PBS and incubated for 1.5 h at room temperature with Alexa fluor 594-conjugated immunoglobulin G (IgG) donkey anti-sheep (1/2000) antibody (Life technologies, Paris, France). Sections were mounted in Prolong gold antifade mounting medium (Life Technologies) and examined under a Nikon 90i fluorescence microscope (Nikon). Number of mast cells per mm^2 and the immunoreactive area/ mm^2 of mucosa were quantified using Nikon-Elements-Ar software.

Statistical analysis

All data are presented as means \pm SEM. For statistical analysis Graph Pad Prism 4.0 (GraphPad, San Diego, CA) was used. Results were analysed by one way ANOVA followed by Dunnett's Multiple Comparison Test. A. Statistical significance was set at $p < 0.05$.

Results

Body weight and food intake

In controls and in CORT-nursed rats, induction of colitis caused a significant ($P < 0.001$) decrease in body weight with respect to corresponding healthy rats (Fig. 1A).

Colitic control and CORT-nursed rats also showed a significant ($P < 0.001$) decrease in food intake in comparison with healthy rats (Fig. 1B). In colitic CORT-nursed rats, the weight loss and reduced food intake were significantly ($P < 0.01$) milder than those observed in colitic control rats (Fig. 1A and B).

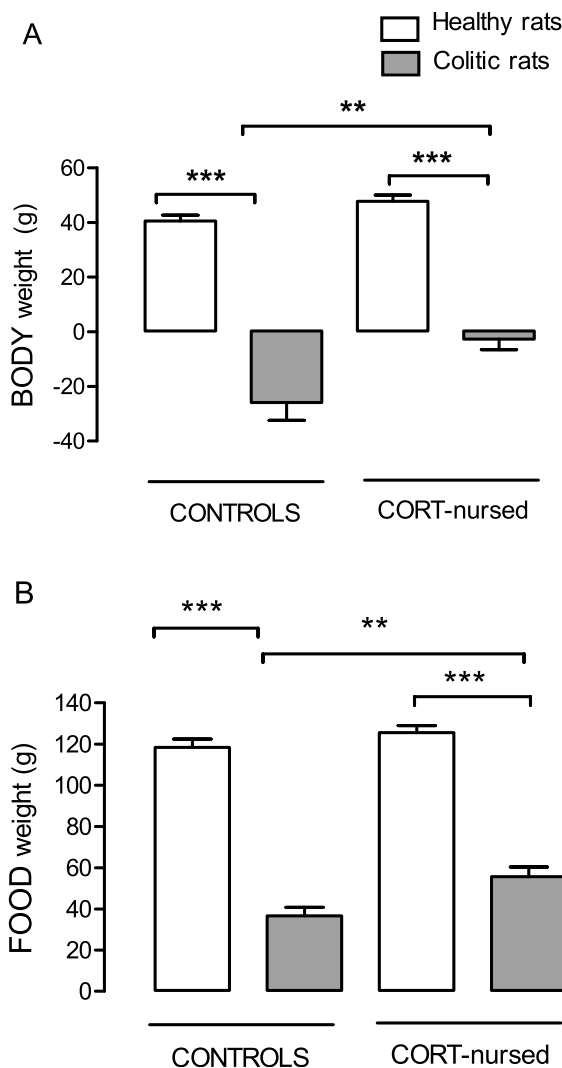


Figure 1. Effect of TNBS-colitis on body weight and food intake in control and CORT-nursed rats. Induction of colitis reduced body weight (A) and food intake (B) both in control and CORT-nursed rats. The decrease in both parameters in colitic CORT-nursed rats was significantly less than in colitic controls. ** $p < 0.01$; *** $p < 0.001$. doi:10.1371/journal.pone.0113389.g001

MPO activity

In controls and in CORT-nursed rats, induction of colitis caused a significant ($P < 0.01$ and $P < 0.05$, respectively) increase in colonic mucosal MPO activity with respect to corresponding healthy rats. In colitic CORT-nursed rats, the increase in MPO activity was significantly ($P < 0.05$) less than that observed in colitic control rats (Fig. 2).

Histological evaluation

Macroscopic score. TNBS-induced colitis, both in control and CORT-nursed rats, caused the appearance of extensive ulceration and necrotic zones, tissue adhesions and, occasionally, diarrhoea. The macroscopic score was similar in both groups (Table 1).

Microscopic score. The induction of colitis, both in control and CORT-nursed rats, resulted in submucosal and mucosal infiltration, increased numbers of inflammatory cells and blood vessel dilatation. The microscopic score was similar in both groups (Table 1).

Intestinal length. In controls and CORT-nursed rats, induction of colitis caused a significant and similar decrease in intestinal length with respect to corresponding healthy rats (Table 1).

Plasma corticosterone levels and colonic mucosal GR expression

In healthy CORT-nursed rats, plasma corticosterone levels were significantly ($P < 0.01$) lower than those observed in healthy controls ($2.83 \pm 0.61 \mu\text{g}/100 \text{ ml}$). In controls and in CORT-nursed rats, induction of colitis caused a significant increase in plasma corticosterone with respect to corresponding healthy rats. In colitic CORT-nursed rats, the increase in corticosterone was significantly ($P < 0.001$) less than that observed in colitic control rats (Fig. 3A).

Western blotting analysis revealed that GR were expressed in the colonic mucosa of control healthy and CORT-nursed healthy rats. Induction of colitis did not significantly modify the GR protein expression in either group (Fig. 3B).

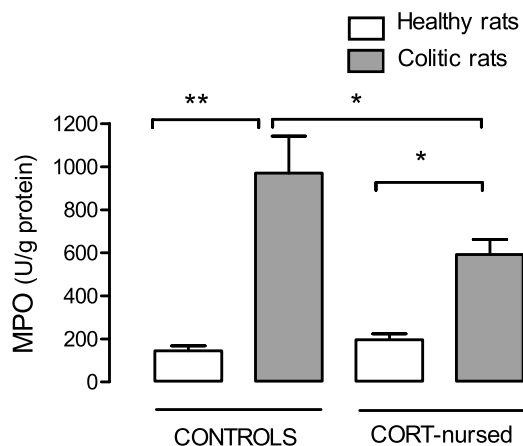


Figure 2. Effect of TNBS-colitis on colonic MPO activity in control and CORT-nursed rats. Four days after TNBS instillation, MPO activity was increased both in control and CORT-nursed rats with respect to the healthy condition. MPO levels in colitic CORT-nursed rats were significantly lower than in colitic controls. * $p < 0.05$; ** $p < 0.01$. doi:10.1371/journal.pone.0113389.g002

Table 1. Intestinal length, macroscopic score and microscopic score in healthy and colitic control and CORT-nursed rats.

| | Control rats | | CORT-nursed rats | |
|------------------------|--------------|--------------|------------------|---------------|
| | Healthy | Colitic | Healthy | Colitic |
| Intestinal length (cm) | 22.50±0.33 | 18.38±0.34** | 22.05±0.27 | 18.25±0.31*** |
| Macroscopic score (n.) | 0.0±0.0 | 6.66±0.35*** | 0.0±0.0 | 6.09±0.38*** |
| Microscopic score (n.) | 2.33±0.67 | 7.75±0.78 ** | 4.17±0.73 | 7.83±1.01 * |

TNBS-induced colitis caused a similar variation in all the parameters considered in control and CORT-nursed rats. * $p < 0.05$, ** $p < 0.01$, *** $p < 0.001$ vs. own healthy group. doi:10.1371/journal.pone.0113389.t001

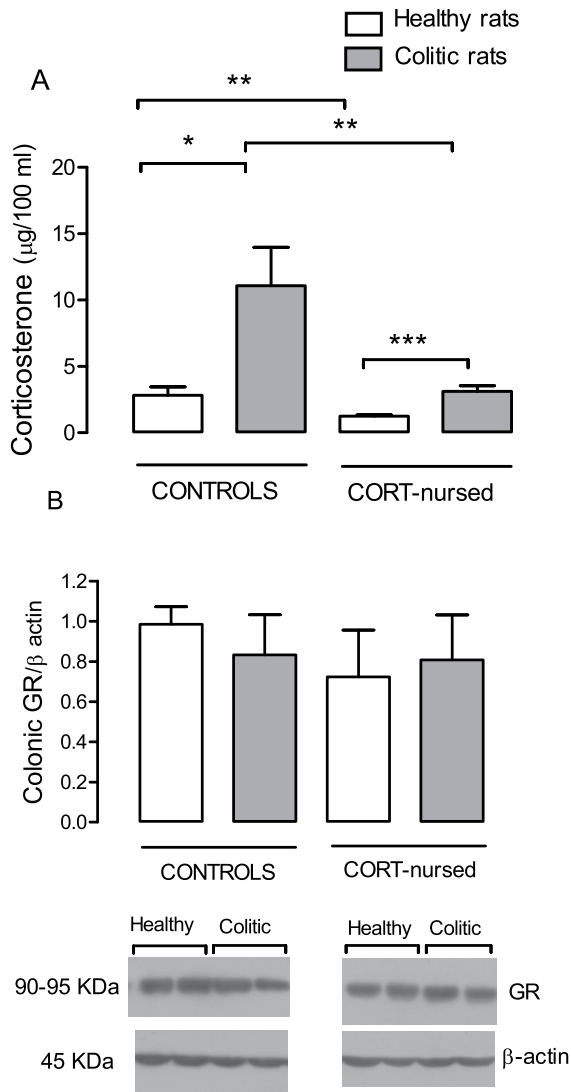


Figure 3. Effect of TNBS-colitis on plasma corticosterone and colonic mucosal GR expression. Four days after TNBS instillation, plasma corticosterone levels (A) were increased both in control and CORT-nursed rats with respect to the healthy condition. The increase in colitic CORT-nursed rats was significantly less than that in colitic controls. Moreover, healthy CORT-nursed rats showed plasma corticosterone levels lower than in healthy controls; * $p < 0.05$; ** $p < 0.01$; *** $p < 0.001$. Mucosal GR expression (B) was similar under all the experimental conditions. Representative Western blotting images were discussed above.

doi:10.1371/journal.pone.0113389.g003

Mast cell number and density

Healthy control and CORT-nursed rats presented similar numbers of colonic mucosa mast cells, and the induction of colitis did not modify these numbers in either animal group (Fig. 4A).

In colitic control animals, a significant ($P < 0.01$) decrease in mast cell intensity, corresponding to an increase in cell activity (degranulation), was observed; on the contrary, in colitic CORT-nursed rats mast cell intensity failed to be significantly modified, evidencing a reduced mast cell degranulation (Fig. 4B).

Representative histological samples of colonic sections from healthy and colitic controls, and from healthy and colitic CORT-nursed rats are reported in Fig. 4.

Colonic CRF and CRH-1R immunostaining

CRF immunoreactivity in colonic lamina propria of healthy control and CORT-nursed rats was similar, and higher in colonic epithelium of healthy CORT-nursed rats in comparison with healthy controls (Fig. 5 A, B). The induction of colitis significantly ($P < 0.05$) increased CRF immunoreactivity in both animal groups, in lamina propria as well as in colonic epithelium (Fig. 5 A, B). Representative histological samples of colonic mucosal sections from healthy and colitic controls, and healthy and colitic CORT-nursed rats are reported in Fig. 5.

Healthy control and CORT-nursed rats presented similar CRH-1R expression in colonic mucosal immune cells, which was not affected by the induction of colitis (Fig. 6A). In colonic epithelium, the CRH-1R immunoreactivity of healthy CORT-nursed rats was significantly ($P < 0.0001$) increased with respect to healthy controls. After colitis induction, CRH-1R expression was significantly ($P < 0.05$) reduced in CORT-nursed rats and significantly ($P < 0.0001$) increased in controls with respect to corresponding healthy rats (Fig. 6B). Representative histological sections of colonic epithelium from both healthy and colitic control and CORT-nursed rats are reported in Fig. 6.

Discussion

This is the first study indicating the beneficial effect of positive postnatal manipulation on the homeostasis of the gastrointestinal tract in the presence of an inflammatory disease. In fact, adult male rat progeny (CORT-nursed) of mothers whose drinking water was supplemented during lactation with moderate doses of corticosterone had a reduced vulnerability to TNBS-induced experimental colitis. Such a protective effect is revealed by improvements in several indices of the pathology (reductions in body weight and food intake, increased colonic MPO activity), and well correlated with a decrease in colonic mast cell degranulation. Conversely, colitic CORT-nursed rats, in comparison with colitic controls, did not show any variations in histological (macroscopic and microscopic) scores or in the typical shortening of intestinal length. It is important to note, however, that these parameters

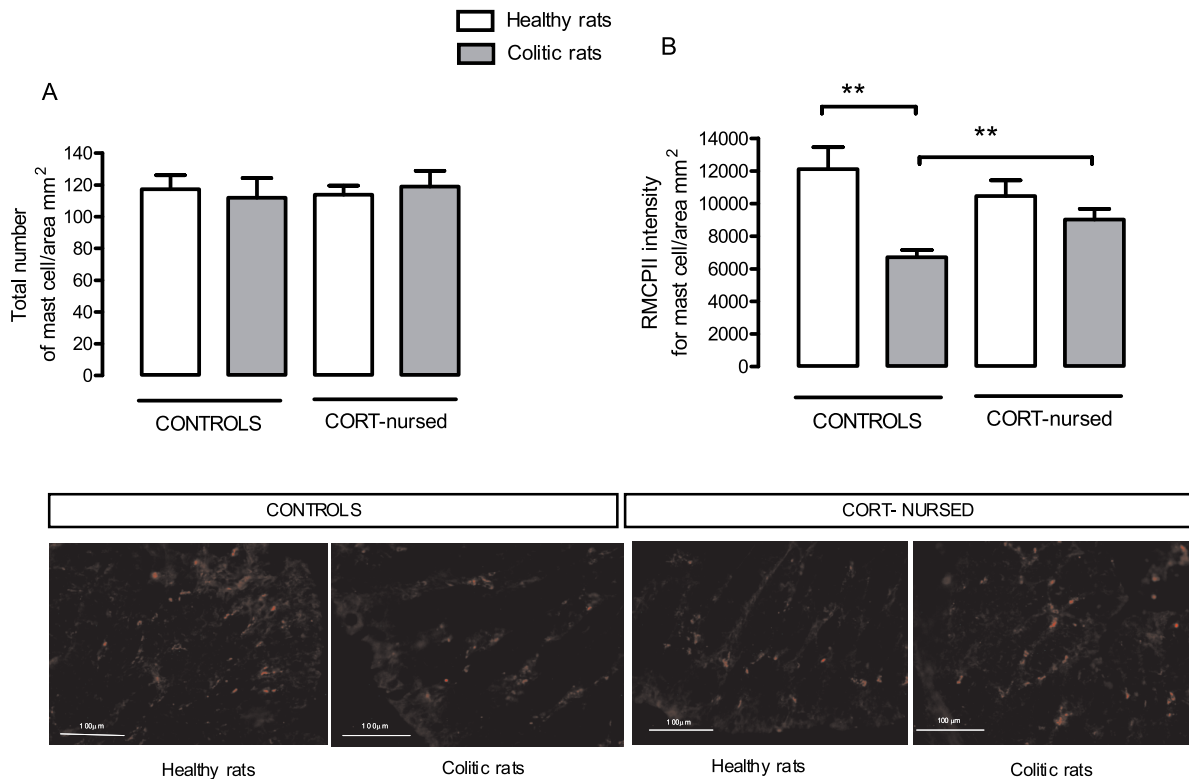


Figure 4. Effect of TNBS-colitis on colonic mucosal mast cell numbers and degranulation. The number of mucosal mast cells (A) did not change under any of the experimental conditions. The degranulation index (B) of mast cell activation, expressed as RMCPII intensity, was similar in healthy control and CORT-nursed rats, but significantly increased in colitic controls and unchanged in colitic CORT-nursed rats. $^{***}p < 0.01$. Representative images were discussed above. doi:10.1371/journal.pone.0113389.g004

were evaluated in the early phase of the experimental colitis, corresponding to the maximum level of inflammation, when the healing process, responsible for recovery from the ulcers, oedema and restoration of a normal intestinal length, was probably not yet manifested. Thus, we cannot exclude that, in a late phase, recovery from these clinical signs could also be accelerated.

In the present study, we show that incremental maternal plasma levels of corticosterone that also increase hormone plasma levels in the newborns, mimicking a mild stress [26], promote, in the adult progeny, an adaptive phenotype more resistant to TNBS-induced colitis.

As reported here, healthy CORT-nursed rats are characterized by basal corticosterone plasma levels lower than those of healthy controls. This result confirms previous observations indicating that maternal corticosterone, during the neonatal period, induces a long-lasting hyporesponsive HPA axis in the adult progeny that represents a peculiar characteristic of the CORT-nursed model [27]. The persistent hyporeactivity of the HPA axis is also evident during colitis, as CORT-nursed adult rats had a reduced increase in plasma corticosterone under colonic inflammation with respect to colitic control rats. We can not exactly establish if and how the reduced HPA axis activity in adult CORT-nursed rats would be primarily involved in the reduced vulnerability to colitis we have observed. In previous studies we presented evidence how in the CORT-nursed rat model the HPA axis hyporeactivity and lower plasma corticosterone levels could play a crucial role in determining a phenotype characterized by reduced fearfulness in anxiogenic situations and resistance to ischemic neuronal damage [23,38]. Certainly, the HPA axis is an important link between the brain and the gut immune system, and has a pivotal role in all the

responses necessary to restore its homeostasis during stress, infections and inflammatory processes. Alterations in the responsiveness of the HPA axis are also recognized to be important components in the pathogenesis of several stress- and inflammatory-related gastrointestinal disorders [9,10,39]. In detrimental experimental models of neonatal manipulation, such as maternal deprivation (that, in general, produces outcomes opposite to those observed in the CORT-nursed model), a long-lasting HPA axis hyper-activation has been shown to be strictly associated with increased visceral hypersensitivity and intestinal inflammation, together with altered colonic barrier permeability [6,7], thus suggesting a possible bidirectional role of HPA axis activity (i.e. ameliorating or worsening).

The dual role of the HPA axis in immune function may be strictly linked to the different endogenous levels of GCs released by the adrenal gland as a consequence of differential HPA axis reactivity. In fact, despite the well known immunosuppressive properties of GCs, thanks to which they have been used in the treatment of several inflammatory and immune diseases, it is known that they possess opposing effects that emphasize a bimodal regulation of immune responses [40,41]. In this regard, the present data permit us to correlate a reduced vulnerability to an inflammatory stimulus with low plasma corticosterone levels. The biological effects of GCs are mediated by cytosolic GRs that, after translocation into the nucleus, interact with the promoter regions of different genes, controlling the transcription of immunomodulator factors. GRs are expressed in a variety of tissues, including the intestine, where they play a role in the control of the local inflammatory state [42,43]. In CORT-nursed and control rats, we observed no changes in colonic mucosal GR expression,

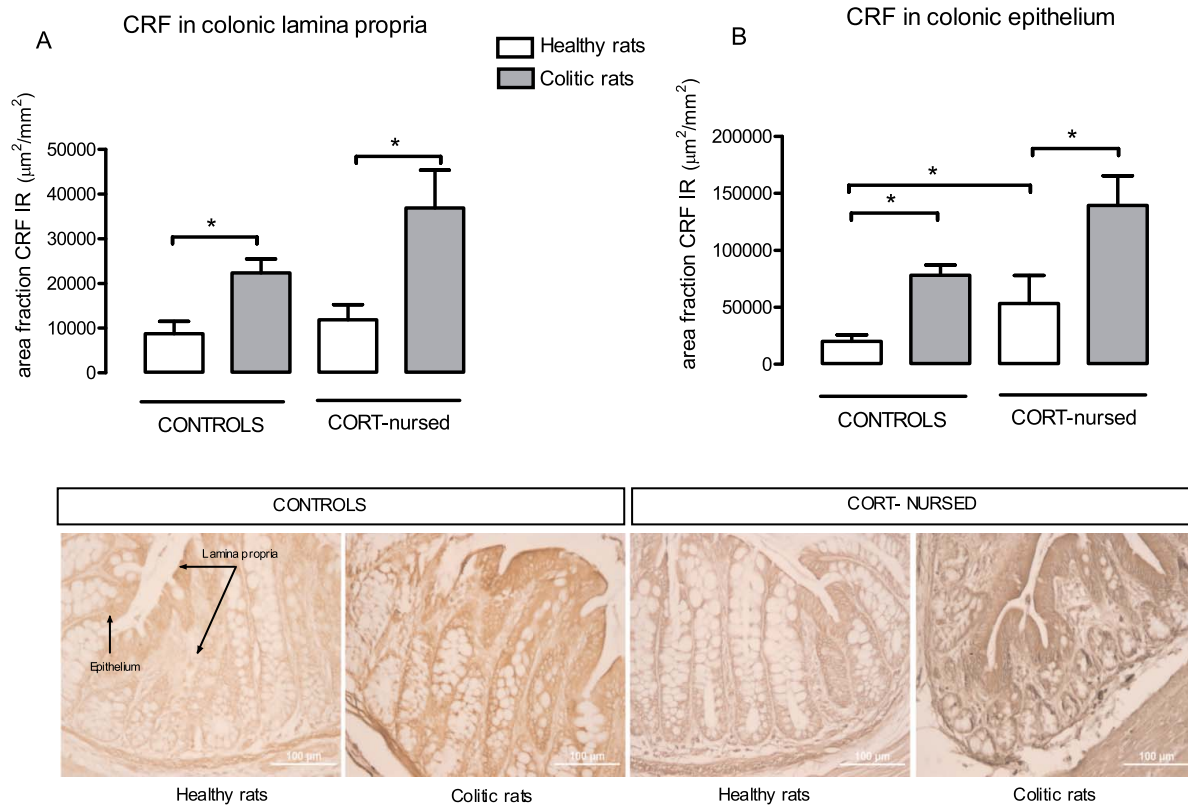


Figure 5. Effect of TNBS-colitis on colonic expression of CRF. Quantification (upper panels) and respective representative micrographs (lower panels) of CRF immunostaining in colonic lamina propria (A) and colonic epithelium (B) from healthy and colitic control and CORT-nursed rats. TNBS-induced colitis caused a significant increase in colonic CRF expression in both groups (A and B). In healthy rats, colonic epithelial CRF expression in CORT-nursed rats was higher than in controls (B). * $p < 0.05$. doi:10.1371/journal.pone.0113389.g005

even if we cannot exclude the existence of a different receptor function (namely, receptor affinity) that, unfortunately, we could not examine because selective radioactive receptor ligands are no longer available. It is also possible that in CORT-nursed and control rats several post-transductional pathways could contribute to the activation/inhibition of transcriptional factors (i.e. NF- κ B, AP-1) that differently modulate downstream signals and enhance an anti-inflammatory counter-regulatory mechanism, contributing to the reduced susceptibility to colitis in our experimental model.

Concerning the possible mechanism by which endogenous corticosterone induces its peripheral protective action on TNBS-colitis, the control of intestinal permeability could be suggested [44]. In particular, lower corticosterone plasma levels in CORT-nursed rats could promote the up-regulation of tight junction proteins and decrease colonic epithelial barrier function, ameliorating colitis. Some previous evidence tends to confirm this hypothesis [45,46]. It is well known that high levels of glucocorticoids are associated with increased epithelial permeability after stress, in all regions of the gastrointestinal tract, which disappears after adrenalectomy or pharmacologic blockade of GR. In addition, experimental dexamethasone treatment has been shown to increase rat gastrointestinal permeability, mimicking the effects of stress [45,46].

On the other hand, CORT-nursed rats have a new phenotypic profile that, in addition to the hyporesponsive HPA axis, has some other important peripheral characteristics that could be involved in the higher resistance to TNBS-induced colitis. We are referring to the intestinal CRF/CRH-1R system. CRF and CRF receptors, first described in the CNS, are also highly expressed in peripheral

tissues. Peripheral CRF receptors contribute to stress-related colonic dysfunctions, being involved in changes in colonic secretion and permeability [30], and in particular, the activation of peripheral CRH-1R appears to mediate pro-inflammatory responses [47]. Previous studies indicate that the expression of the peripheral CRFergic system is altered during experimental colitis [43]. In this work we show, for the first time, that some long-lasting alterations in the colonic expression of both CRF and its receptor, in healthy and colitic CORT-nursed rats in comparison with controls, were induced by the beneficial hormonal stimulation during neonatal life. In particular, the expression of CRF and CRH-1R is increased in the colonic epithelium of healthy CORT-nursed rats in comparison with healthy controls, while it is unchanged in the lamina propria. Such a difference in the setting of the CRF system found in the adult CORT-nursed phenotype has to be associated, reasonably, with the increased (although moderate) neonatal exposure to corticosterone during lactation, but what is the mechanism underlying this event is not yet known. GCs are among the factors that influence the development of an effective gut barrier and epithelial integrity during postnatal life [47]. They play an important role in the maturation of digestive and absorptive functions, and stimulate morphogenesis in the small intestine and colon in humans [48-50] as well as in rodents [51,52]. During the first twenty postnatal days, the responsiveness to GCs in the gut is increased [24] and GCs may influence stress-induced permeability changes in the colon [51-54]. In addition, GCs are able to influence the synthesis of CRF/CRH receptors [55] under stress conditions; thus, we suggest that the moderate increase in plasma corticosterone in the CORT-nursed pups

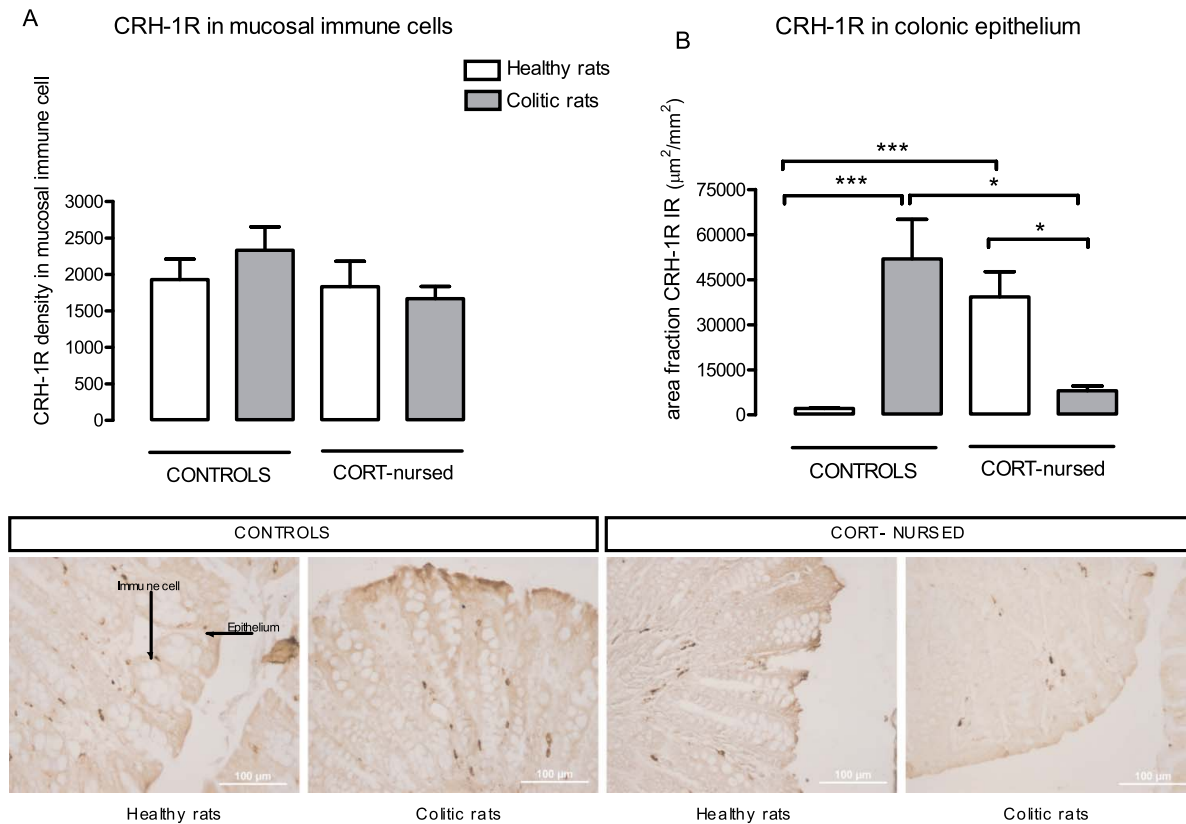


Figure 6. Effect of TNBS-colitis on colonic expression of CRH-1R. Quantification (upper panels) and respective representative micrographs (lower panels) of CRH-1R immunostaining in colonic immune cells (A) and colonic epithelium (B) from healthy and colitic control and CORT-nursed rats. TNBS-induced colitis, which didn't alter CRH-1R expression in mucosal immune cells in any of the groups (A), caused a significant change in colonic epithelium (B). In particular, colonic epithelial CRH-1R expression, which was higher in healthy CORT-nursed rats in comparison with healthy controls, was up-regulated in colitic controls and down-regulated in colitic CORT-nursed rats (B). * $p < 0.05$; *** $p < 0.001$. doi:10.1371/journal.pone.0113389.g006

during lactation, mimicking a mild stress, reprograms the peripheral epithelial CRF/CRH receptor system differently than in the controls. However, the long-lasting modification of colonic epithelial CRF and CRH-1 receptor expression observed in the CORT-nursed phenotype does not affect the homeostasis capacity of healthy CORT-nursed rats. Conversely, under TNBS colitis, an opposing modification of colonic CRH-1R expression corresponds to the up-regulation in colonic CRF expression, both in CORT-nursed and control rats. In particular, in CORT-nursed rats, unlike control rats [56], the induction of colitis caused the down-regulation of epithelial CRH-1R. The fact that the CORT-nursed phenotype, under basal conditions as well as under experimental colitis, shows a difference in expression of the peripheral CRFergic system, supports the involvement of this system in the reduced vulnerability to colitis observed in this model. CORT-nursed rats are more apt to counteract the homeostatic alteration induced by colitis through CRH-1R pathways, which are known to mediate pro-inflammatory processes [29,57]. The down-regulation of CRH-1R in CORT-nursed rats could promote the reduced susceptibility to TNBS-colitis. The explanation why the differential regulation of CRH-1R expression can determine greater resistance to colitis in CORT-nursed rats, requires further investigations. Among the underlying mechanisms, an improvement in colonic epithelial function could be suggested. In fact, as colonic epithelial CRH-1R are known to mediate increased intestinal permeability [32], their down regulation, observed in colitic CORT-nursed rats, could result in a more efficacious barrier against luminal pro-

inflammatory antigens. This proposal is in agreement with Soderholm et al., who, in functional studies with CRF antagonists, indicated that CRF is important for early life stress-induced changes in colonic epithelial function and suggested that its effects could be mediated by peripherally located receptors without characterizing their subclasses and location [58]. In this study we clarify that the subclass of CRF receptors mainly involved in modulating CRF-altered intestinal permeability is CRH-1R, located in the colonic epithelium.

The hypothesis that colonic epithelial functional improvement plays a pivotal role in the reduced susceptibility to colitis observed in CORT-nursed rats was put in evidence above when we discussed the role of their lower plasma corticosterone level, and it is also supported by another observation reported here. We are referring to the reduced colonic mast cell degranulation shown in colitic CORT-nursed rats, which may have a positive role in the preservation of the intestinal barrier. Mast cell activation increases gut macromolecular permeability following exposure to stress through the release of different mediators that enhance influx, altering trans-epithelial ion transport [33,59]. The significant decrease in colonic mast cell degranulation observed in colitic CORT-nursed rats with respect to controls is in agreement with mast cell modulation of intestinal permeability, even if indirectly.

Altogether, these findings (the reduced plasma corticosterone levels, the down-regulation of colonic epithelial CRH-1R and the reduced colonic mast cell degranulation) contribute toward the hypothesis that changes in intestinal permeability are the basis for

the reduced vulnerability to colitis observed in CORT-nursed rats. Certainly, because all neonatal manipulations are able to re-program numerous and different functions, the results reported in the present study cannot be considered as the only factors capable of enhancing resistance to colitis. Further studies are necessary in order to better understand the complex interactions between this neonatal manipulation and the reduced predisposition to developing intestinal pathologies exhibited by these animals.

However, we suggest that the CORT-nursed model represents an experimental model providing new insight into the field of gastrointestinal pathologies, and demonstrating that mild neonatal stress, similar to maternal care [60], induces long lasting physiological changes that make the adult better adapted to

colonic inflammatory stress, probably through alterations in intestinal permeability.

In conclusion, the CORT-nursed model can be considered a useful tool to better explore other endogenous systems involved in individual susceptibility to colitis, in order to identify new therapeutic targets and approaches in the field of intestinal disorders.

Author Contributions

Conceived and designed the experiments: CP CG SA PC MB GI VT. Performed the experiments: CP CG MZ VB SA. Analyzed the data: SA CG MZ. Contributed reagents/materials/analysis tools: GI PC MB VT. Wrote the paper: CP GI MB PC.

References

- Bifulco A, Brown GW, Adler Z (1991) Early sexual abuse and clinical depression in adult life. *Br J Psychiatry* 159: 115–122.
- Brown GR, Anderson B (1991) Psychiatric morbidity in adult inpatients with childhood histories of sexual and physical abuse. *Am J Psychiatry* 148: 55–61.
- Felitti VJ, Anda RF, Nordenberg D, Williamson DF, Spitz AM, et al. (1998) Relationship of childhood abuse and household dysfunction to many of the leading causes of death in adults. The Adverse Childhood Experiences (ACE) Study. *Am J Prev Med* 14: 245–258.
- McCauley J, Kern DE, Kolodner K, Dill L, Schroeder AF, et al. (1997) Clinical characteristics of women with a history of childhood abuse: unhealed wounds. *Jama* 277: 1362–1368.
- Shonkoff JP, Boyce WT, McEwen BS (2009) Neuroscience, molecular biology, and the childhood roots of health disparities: building a new framework for health promotion and disease prevention. *Jama* 301: 2252–2259.
- Barreau F, de Lahiitte JD, Ferrier L, Frexinos J, Bueno L, et al. (2006) Neonatal maternal deprivation promotes *Nippostrongylus brasiliensis* infection in adult rats. *Brain Behav Immun* 20: 254–260.
- Barreau F, Ferrier L, Fioramonti J, Bueno L (2004) Neonatal maternal deprivation triggers long term alterations in colonic epithelial barrier and mucosal immunity in rats. *Gut* 53: 501–506.
- Soderholm JD, Yang PC, Ceponis P, Vohra A, Riddell R, et al. (2002) Chronic stress induces mast cell-dependent bacterial adherence and initiates mucosal inflammation in rat intestine. *Gastroenterology* 123: 1099–1108.
- Bonaz BL, Bernstein CN (2013) Brain-gut interactions in inflammatory bowel disease. *Gastroenterology* 144: 36–49.
- Ringel Y, Drossman DA (2001) Psychosocial aspects of Crohn's disease. *Surg Clin North Am* 81: 231–252, x.
- Ringel Y, Sperber AD, Drossman DA (2001) Irritable bowel syndrome. *Annu Rev Med*.
- Tache Y and Bonaz B (2007) Corticotropin-releasing factor receptors and stress-related alterations of gut motor function. *J Clin Invest* 117: 33–40.
- Tache Y, Perdue MH (2004) Role of peripheral CRF signalling pathways in stress-related alterations of gut motility and mucosal function. *Neurogastroenterol Motil* 16 Suppl 1: 137–142. 52: 319–338.
- Rutter M (1979) Protective factors in children's responses to stress and disadvantage. *Ann Acad Med Singapore* 8: 324–338.
- Rutter M (1979) Maternal deprivation, 1972-1978: new findings, new concepts, new approaches. *Child Dev* 50: 283–305.
- Repetti RL, Taylor SE, Seeman TE (2002) Risky families: family social environments and the mental and physical health of offspring. *Psychol Bull* 128: 330–366.
- Smith J, Prior M (1995) Temperament and stress resilience in school-age children: a within-families study. *J Am Acad Child Adolesc Psychiatry* 34: 168–179.
- Fox C, Merali Z, Harrison C (2006) Therapeutic and protective effect of environmental enrichment against psychogenic and neurogenic stress. *Behav Brain Res* 175: 1–8.
- Hutchinson KM, McLaughlin KJ, Wright RL, Bryce Ortiz J, Anouti DP, et al. (2012) Environmental enrichment protects against the effects of chronic stress on cognitive and morphological measures of hippocampal integrity. *Neurobiol Learn Mem* 97: 250–260.
- Francis DD, Diorio J, Plotsky PM, Meaney MJ (2002) Environmental enrichment reverses the effects of maternal separation on stress reactivity. *J Neurosci* 22: 7840–7843.
- Meaney MJ, Szyf M (2005) Environmental programming of stress responses through DNA methylation: life at the interface between a dynamic environment and a fixed genome. *Dialogues Clin Neurosci* 7: 103–123.
- Zhang TY, Labonte B, Wen XL, Turecki G, Meaney MJ (2013) Epigenetic mechanisms for the early environmental regulation of hippocampal glucocorticoid receptor gene expression in rodents and humans. *Neuropsychopharmacology* 38: 111–123.
- Casolini P, Domenici MR, Cinque C, Alema GS, Chiodi V, et al. (2007) Maternal exposure to low levels of corticosterone during lactation protects the adult offspring against ischemic brain damage. *J Neurosci* 27: 7041–7046.
- Angelucci L, Patacchioli FR, Chierichetti C, Laureti S (1983) Perinatal mother-offspring pituitary-adrenal interrelationship in rats: corticosterone in milk may affect adult life. *Endocrinol Exp* 17: 191–205.
- Yorty JL, Bonneau RH (2004) Impact of maternal stress on the transmammary transfer and protective capacity of herpes simplex virus-specific immunity. *Am J Physiol Regul Integr Comp Physiol* 287: R1316–1324.
- Casolini P, Cigliana G, Alema GS, Ruggieri V, Angelucci L, et al. (1997) Effect of increased maternal corticosterone during lactation on hippocampal corticosteroid receptors, stress response and learning in offspring in the early stages of life. *Neuroscience* 79: 1005–1012.
- Catalani A, Casolini P, Scaccianoce S, Patacchioli FR, Spinuzzi P, et al. (2000) Maternal corticosterone during lactation permanently affects brain corticosteroid receptors, stress response and behaviour in rat progeny. *Neuroscience* 100: 319–325.
- Greenwood-Van Meerveld B, Johnson AC, Cochrane S, Schulkin J, Myers DA (2005) Corticotropin-releasing factor 1 receptor-mediated mechanisms inhibit colonic hypersensitivity in rats. *Neurogastroenterol Motil* 17: 415–422.
- Im E, Rhee SH, Park YS, Fiocchi C, Tache Y, et al. (2010) Corticotropin-releasing hormone family of peptides regulates intestinal angiogenesis. *Gastroenterology* 138: 2457–2467, 2467 e2451–2455.
- Mailhot C, Million M, Wei JY, Gauthier A, Tache Y (2000) Peripheral corticotropin-releasing factor and stress-stimulated colonic motor activity involve type 1 receptor in rats. *Gastroenterology* 119: 1569–1579.
- Million M, Grigoriadis DE, Sullivan S, Crowe PD, McRoberts JA, et al. (2003) A novel water-soluble selective CRF1 receptor antagonist, NBI 35965, blunts stress-induced visceral hyperalgesia and colonic motor function in rats. *Brain Res* 985: 32–42.
- Teitelbaum AA, Gareau MG, Jury J, Yang PC, Perdue MH (2008) Chronic peripheral administration of corticotropin-releasing factor causes colonic barrier dysfunction similar to psychological stress. *Am J Physiol Gastrointest Liver Physiol* 295: G452–459.
- Wallon C, Yang PC, Keita AV, Ericson AC, McKay DM, et al. (2008) Corticotropin-releasing hormone (CRH) regulates macromolecular permeability via mast cells in normal human colonic biopsies in vitro. *Gut* 57: 50–58.
- Morteau O, Hachet T, Causette M, Bueno L (1994) Experimental colitis alters visceromotor response to colorectal distension in awake rats. *Dig Dis Sci* 39: 1239–1248.
- Wallace JL, Keenan CM, Gale D, Shoupe TS (1992) Exacerbation of experimental colitis by nonsteroidal anti-inflammatory drugs is not related to elevated leukotriene B4 synthesis. *Gastroenterology* 102: 18–27.
- Fabia R, ArRajab A, Willen R, Andersson R, Ahren B, et al. (1992) Effects of phosphatidylcholine and phosphatidylinositol on acetic-acid-induced colitis in the rat. *Digestion* 53: 35–44.
- Bradley PP, Priebe DA, Christensen RD, Rothstein G (1982) Measurement of cutaneous inflammation: estimation of neutrophil content with an enzyme marker. *J Invest Dermatol* 78: 206–209.
- Catalani A, Alema GS, Cinque C, Zuena AR, Casolini P (2011) Maternal corticosterone effects on hypothalamus-pituitary-adrenal axis regulation and behavior of the offspring in rodents. *Neurosci Biobehav Rev* 35: 1502–1517.
- Kiank C, Tache Y, Larauche M (2010) Stress-related modulation of inflammation in experimental models of bowel disease and post-infectious irritable bowel syndrome: role of corticotropin-releasing factor receptors. *Brain Behav Immun* 24: 41–48.
- Dhabhar FS, McEwen BS (1999) Enhancing versus suppressive effects of stress hormones on skin immune function. *Proc Natl Acad Sci U S A* 96: 1059–1064.
- Lim HY, Muller N, Herold MJ, van den Brandt J, Reichardt HM (2007) Glucocorticoids exert opposing effects on macrophage function dependent on their concentration. *Immunology* 122: 47–53.

42. Ergang P, Leden P, Bryndova J, Zbankova S, Miksik I, et al. (2008) Glucocorticoid availability in colonic inflammation of rat. *Dig Dis Sci* 53: 2160–2167.
43. van Tol EA, Petrusz P, Lund PK, Yamauchi M, Sartor RB (1996) Local production of corticotropin releasing hormone is increased in experimental intestinal inflammation in rats. *Gut* 39: 385–392.
44. Moussaoui N, Braniste V, Ait-Belgnaoui A, Gabanou M, Sekkal S, et al. (2014) Changes in intestinal glucocorticoid sensitivity in early life shape the risk of epithelial barrier defect in maternal-deprived rats. *PLoS One* 9: e88382.
45. Hart A, Kamm MA (2002) Review article: mechanisms of initiation and perpetuation of gut inflammation by stress. *Aliment Pharmacol Ther* 16: 2017–2028.
46. Meddings JB, Swain MG (2000) Environmental stress-induced gastrointestinal permeability is mediated by endogenous glucocorticoids in the rat. *Gastroenterology* 119: 1019–1028.
47. Turner JR (2009) Intestinal mucosal barrier function in health and disease. *Nat Rev Immunol* 9: 799–809.
48. Costalos C, Gounaris A, Sevastiadou S, Hatzistamatiou Z, Theodoraki M, et al. (2003) The effect of antenatal corticosteroids on gut peptides of preterm infants—a matched group comparison: corticosteroids and gut development. *Early Hum Dev* 74: 83–88.
49. Nanthakumar NN, Klopčič CE, Fernandez I, Walker WA (2003) Normal and glucocorticoid-induced development of the human small intestinal xenograft. *Am J Physiol Regul Integr Comp Physiol* 285: R162–170.
50. Nanthakumar NN, Young C, Ko JS, Meng D, Chen J, et al. (2005) Glucocorticoid responsiveness in developing human intestine: possible role in prevention of necrotizing enterocolitis. *Am J Physiol Gastrointest Liver Physiol* 288: G85–92.
51. Chen M, Sun P, Liu XY, Dong D, Du J, et al. (2011) alpha-fetoprotein involvement during glucocorticoid-induced precocious maturation in rat colon. *World J Gastroenterol* 17: 2933–2940.
52. Pacha J, Vagnerova R, Bryndova J (2003) Carbenoxolone accelerates maturation of rat intestine. *Pediatr Res* 53: 808–813.
53. Henning SJ, Ballard PL, Kretchmer N (1975) A study of the cytoplasmic receptors for glucocorticoids in intestine of pre- and postweanling rats. *J Biol Chem* 250: 2073–2079.
54. Zheng G, Wu SP, Hu Y, Smith DE, Wiley JW, et al. (2013) Corticosterone mediates stress-related increased intestinal permeability in a region-specific manner. *Neurogastroenterol Motil* 25: e127–139.
55. Makino S, Schulkin J, Smith MA, Pacak K, Palkovits M, et al. (1995) Regulation of corticotropin-releasing hormone receptor messenger ribonucleic acid in the rat brain and pituitary by glucocorticoids and stress. *Endocrinology* 136: 4517–4525.
56. Chang J, Hoy JJ, Idumalla PS, Clifton MS, Pecoraro NC, et al. (2007) Urocortin 2 expression in the rat gastrointestinal tract under basal conditions and in chemical colitis. *Peptides* 28: 1453–1460.
57. Dermitzaki E, Tsatsanis C, Minas V, Chatzaki E, Charalampopoulos I, et al. (2007) Corticotropin-releasing factor (CRF) and the urocortins differentially regulate catecholamine secretion in human and rat adrenals, in a CRF receptor type-specific manner. *Endocrinology* 148: 1524–1538.
58. Soderholm JD, Yates DA, Gareau MG, Yang PC, MacQueen G, et al. (2002) Neonatal maternal separation predisposes adult rats to colonic barrier dysfunction in response to mild stress. *Am J Physiol Gastrointest Liver Physiol* 283: G1257–1263.
59. Bischoff SC (2009) Physiological and pathophysiological functions of intestinal mast cells. *Semin Immunopathol* 31: 185–205.
60. Milde AM, Enger O, Murison R (2004) The effects of postnatal maternal separation on stress reactivity and experimentally induced colitis in adult rats. *Physiol Behav* 81: 71–84.