



Correction

Correction: Trop-2 Is a Determinant of Breast Cancer Survival

The PLOS ONE Staff

There is an error in the third sentence of the second paragraph of the “Statistical Analysis” subsection of the Materials and Methods. The correct sentence is: The CI curves were estimated using the 1-Kaplan-Meier probability plots.

There are a number of errors in the headings for Table 2. Please see the corrected Table 2 here.

Table 2. Proportional hazard Cox regression analysis.

| | Hazard ratio | | | |
|-----------------------------------|---------------------|---------------------|----------------------|---------------------|
| | Death | | Relapse ^a | |
| | Unadjusted | Adjusted | Unadjusted | Adjusted |
| Membrane Trop-2 | | | | |
| 1+ versus 0 | 1.50 (0.04) | 1.63 (0.04) | 1.22 (0.30) | 1.17 (0.49) |
| 2+ versus 0 | 1.17 (0.47) | 0.99 (0.97) | 0.92 (0.68) | 0.80 (0.38) |
| 3+ versus 0 | 1.46 (0.12) | 1.19 (0.58) | 0.85 (0.55) | 0.90 (0.74) |
| 123+ versus 0 | 1.37 (0.08) | 1.30 (0.23) | 1.04 (0.82) | 0.98 (0.93) |
| intermediate versus low | 1.23 (0.19) | 1.13 (0.52) | 0.88 (0.40) | 0.88 (0.50) |
| high versus low | 1.16 (0.58) | 1.45 (0.24) | 0.67 (0.18) | 0.80 (0.51) |
| Intracellular Trop-2 (mAb) | | | | |
| 1+ versus 0 | 0.91 (0.62) | 0.80 (0.32) | 0.93 (0.69) | 0.82 (0.37) |
| 2+ versus 0 | 0.73 (0.17) | 0.55 (0.03) | 0.70 (0.11) | 0.53 (0.02) |
| 3+ versus 0 | 0.95 (0.80) | 0.70 (0.18) | 0.72 (0.15) | 0.56 (0.03) |
| 123+ versus 0 | 0.87 (0.39) | 0.69 (0.05) | 0.81 (0.18) | 0.67 (0.04) |
| intermediate versus low | 0.99 (0.93) | 0.91 (0.66) | 0.87 (0.44) | 0.85 (0.42) |
| high versus low | 0.75 (0.15) | 0.48 (0.003) | 0.75 (0.14) | 0.51 (0.004) |
| Intracellular Trop-2 (pAb) | | | | |
| 1+ versus 0 | 0.80 (0.27) | 1.16 (0.56) | 0.78 (0.25) | 0.98 (0.93) |
| 2+ versus 0 | 0.59 (0.004) | 0.59 (0.03) | 0.79 (0.20) | 0.76 (0.24) |
| 3+ versus 0 | 0.81 (0.50) | 0.88 (0.75) | 0.84 (0.59) | 0.82 (0.67) |
| 123+ versus 0 | 0.67 (0.02) | 0.70 (0.08) | 0.79 (0.17) | 0.77 (0.21) |
| intermediate versus low | 0.72 (0.07) | 0.76 (0.21) | 0.90 (0.59) | 0.85 (0.46) |
| high versus low | 0.62 (0.02) | 0.55 (0.02) | 0.77 (0.20) | 0.73 (0.20) |

Unadjusted and adjusted hazard ratios according to Trop-2 expression levels (at the cell membrane or intracellular, as detected by mAb or pAb) and corresponding P values.

^a: cause-specific hazard ratios. The adjusted models included age (continuous linear), grading, pT stage (pT2+pT3 versus pT1), number of positive lymph nodes (0, 1-3, 4-9, >9), ER α , HER-2/neu, p53 and E-cadherin (cut-off: 10% positive cells). Low; \leq 5% positive cells; intermediate, 6-85%; high, \geq 86%. Significantly different values and trends are in bold.

doi:10.1371/journal.pone.0096993.t002

Citation: The PLOS ONE Staff (2014) Correction: Trop-2 Is a Determinant of Breast Cancer Survival. PLoS ONE 9(10): e110606. doi:10.1371/journal.pone.0110606

Published: October 10, 2014

Copyright: © 2014 The PLOS ONE Staff. This is an open-access article distributed under the terms of the Creative Commons Attribution License, which permits unrestricted use, distribution, and reproduction in any medium, provided the original author and source are credited.

There is an error in the legend for Figure 4. Please see the corrected Figure 4 here.

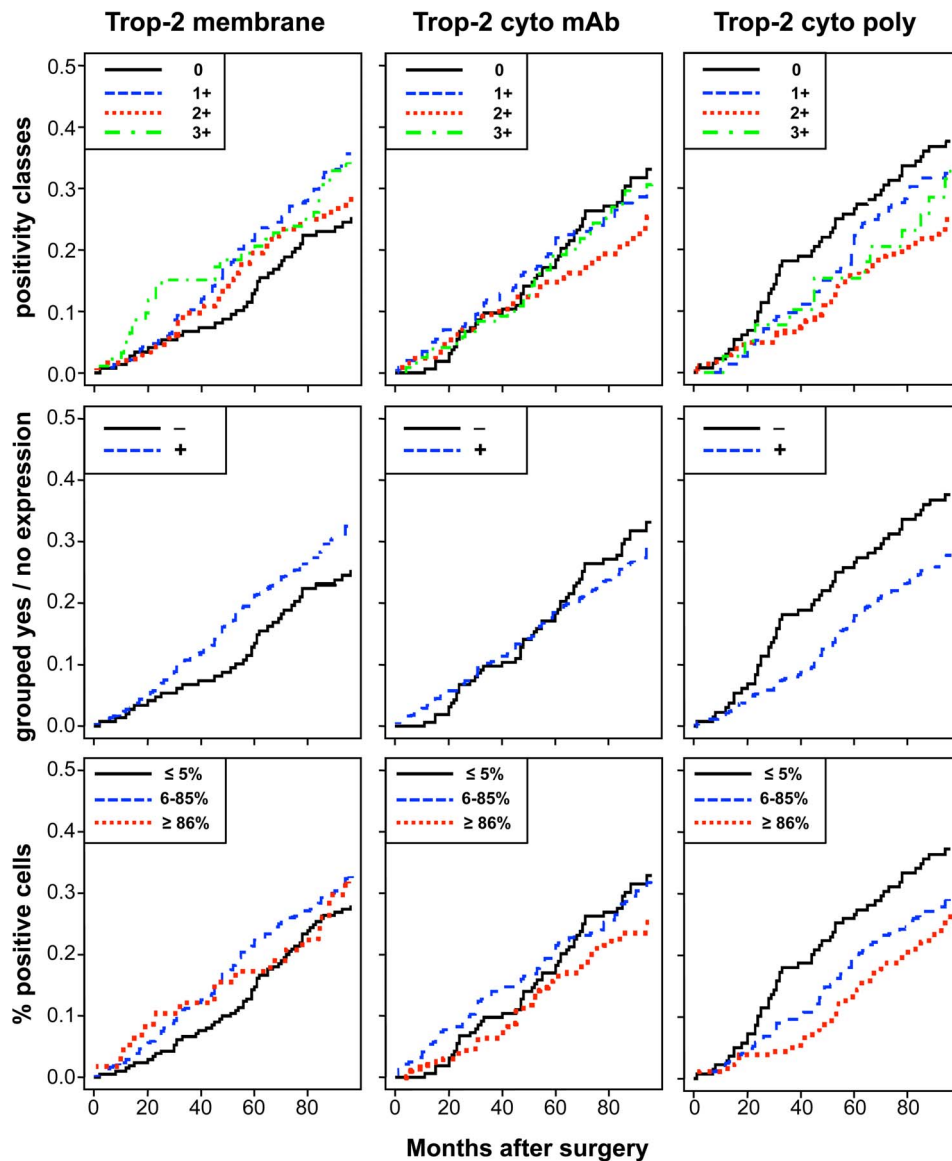


Figure 4. Impact of membrane versus intracellular Trop-2 on patient survival. Cumulative incidence (CI) estimates of death from any cause are reported on the y-axis as a function of follow-up time for distinct Trop-2 expression sub-groups (cell membrane; mAb-detected intracellular; pAb-detected intracellular). Trop-2 expression was categorized according to (**top**) intensity scores (0, 1+, 2+, 3+), (**middle**) intensity grouping, i.e. positive scores 1–12 (+) versus score 0 (–), (**bottom**) percentage of stained cells (low, $\leq 5\%$; intermediate, 6–85%; high, $\geq 86\%$), as indicated in the panels. doi:10.1371/journal.pone.0096993.g004

There is an error in the legend for Figure 5. Please see the corrected Figure 5 here.

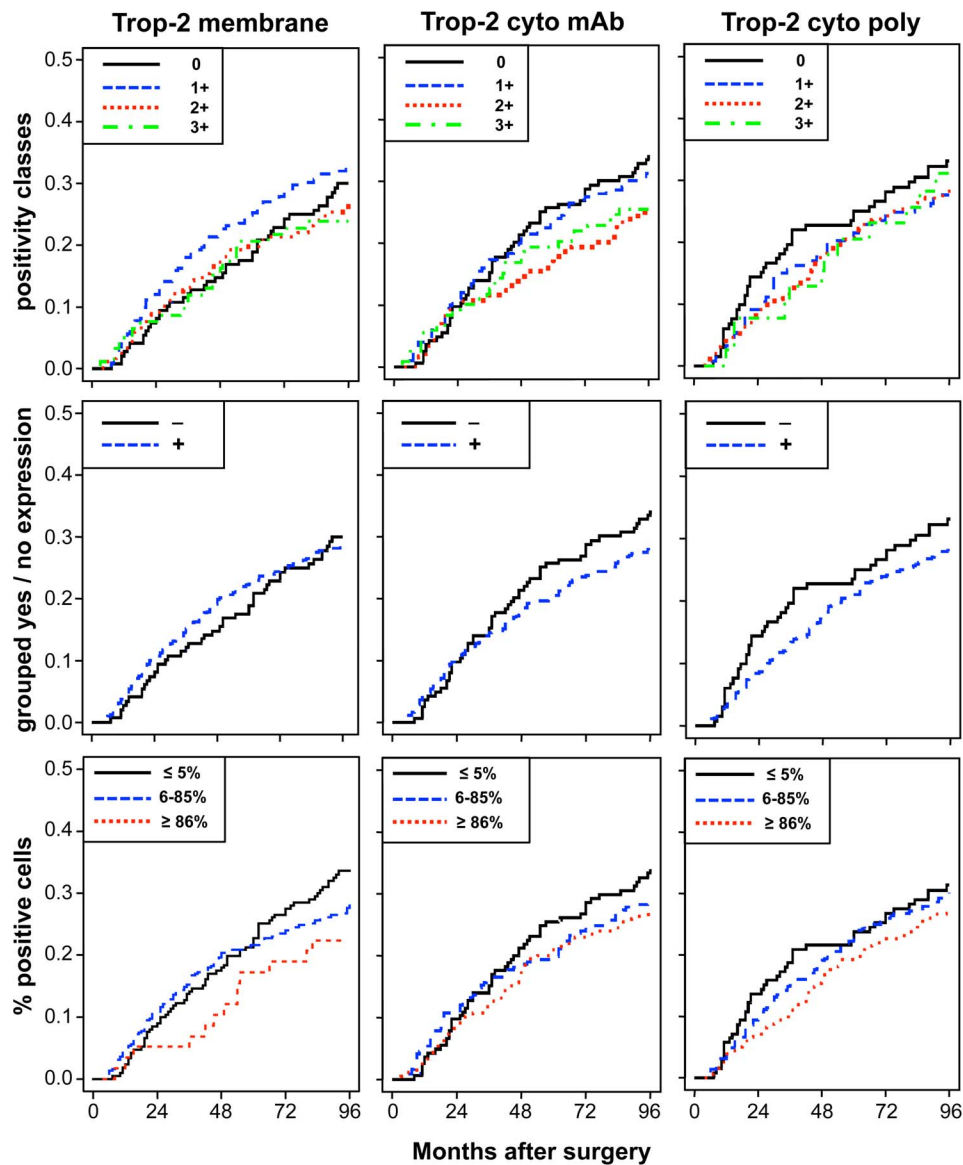


Figure 5. Impact of membrane versus intracellular Trop-2 on disease relapse. Crude cumulative incidence (CCI) estimates of disease relapse are reported on the y-axis as a function of follow-up time for distinct Trop-2 expression sub-groups (cell membrane; mAb-detected intracellular; pAb-detected intracellular). Trop-2 expression was categorized according to **(top)** intensity scores (0, 1+, 2+, 3+), **(middle)** intensity grouping, i.e. positive scores 1–12 (+) versus score 0 (–), **(bottom)** percentage of stained cells (low, $\leq 5\%$; intermediate, 6–85%; high, $\geq 86\%$), as indicated in the panels. CCI were estimated accounting for death as a competing risk.
doi:10.1371/journal.pone.0096993.g005

Reference

1. Ambrogio F, Fornili M, Boracchi P, Trerotola M, Relli V, et al. (2014) Trop-2 Is a Determinant of Breast Cancer Survival. PLoS ONE 9(5): e96993. doi:10.1371/journal.pone.0096993