



DBA/2J Mice Are Susceptible to Diabetic Nephropathy and Diabetic Exacerbation of IOP Elevation

Ileana Soto¹, Gareth R. Howell^{1,2}, Cai W. John¹, Joseph L. Kief¹, Richard T. Libby³, Simon W. M. John^{1,2,4*}

1 The Jackson Laboratory, Bar Harbor, Maine, United States of America, **2** The Howard Hughes Medical Institute, Bar Harbor, Maine, United States of America, **3** Departments of Ophthalmology and Biomedical Genetics, University of Rochester Medical Center, Rochester, New York, United States of America, **4** Department of Ophthalmology, Tufts University of Medicine, Boston, Massachusetts, United States of America

Abstract

Some pathological manifestations of diabetes in the eye include retinopathy, cataracts and elevated intraocular pressure (IOP). Loss of retinal ganglion cells (RGCs) in non-proliferative stages of diabetic retinopathy and small increases in IOP in diabetic patients has raised the possibility that diabetes affects the development and progression of ocular hypertension and glaucoma. The *Ins2^{Akita}* mutation is known to cause diabetes and retinopathy on a C57BL/6J (B6) background by as early as 3 months of age. Here, the impact of the Akita mutation on glaucoma was assessed using DBA/2J (D2) mice, a widely used mouse model of ocular hypertension induced glaucoma. In *D2.Ins2^{Akita/+}* mice, the contribution of diabetes to vascular permeability, IOP elevation, RGC loss, and glaucoma development was assessed. *D2.Ins2^{Akita/+}* mice developed a severe diabetic nephropathy and early mortality between 6–8 months of age. This agrees with previous reports showing that the D2 background is more susceptible to diabetes than the B6 background. In addition, *D2.Ins2^{Akita/+}* mice had vascular leakage, astrocyte reactivity and a significant increase in IOP. However no RGC loss and no anterograde axonal transport dysfunction were found at 8.5 months of age. Therefore, our data show that despite severe diabetes and an increased IOP compared to controls, RGCs do not lose axon transport or degenerate. This may be due to a DBA/2J-specific genetic modifier(s) that could provide novel and important avenues for developing new therapies for diabetic retinopathy and possibly glaucoma.

Citation: Soto I, Howell GR, John CW, Kief JL, Libby RT, et al. (2014) DBA/2J Mice Are Susceptible to Diabetic Nephropathy and Diabetic Exacerbation of IOP Elevation. PLoS ONE 9(9): e107291. doi:10.1371/journal.pone.0107291

Editor: Marta Agudo-Barriso, Instituto Murciano de Investigación Biosanitaria-Virgen de la Arrixaca, Spain

Received: June 13, 2014; **Accepted:** August 12, 2014; **Published:** September 10, 2014

Copyright: © 2014 Soto et al. This is an open-access article distributed under the terms of the Creative Commons Attribution License, which permits unrestricted use, distribution, and reproduction in any medium, provided the original author and source are credited.

Data Availability: The authors confirm that all data underlying the findings are fully available without restriction. All relevant data are within the paper.

Funding: Funding was provided by NIH grants EY011721 (SWMJ), EY021525 (GRH), EY018606 (RTL), www.nih.gov; the Howard Hughes Medical Institute; and Barbara and Joseph Cohen Foundation. The funders had no role in study design, data collection and analysis, decision to publish, or preparation of the manuscript.

Competing Interests: The authors have declared that no competing interests exist.

* Email: simon.john@jax.org

Introduction

Diabetes is the leading cause of blindness among adults between 20 to 74 years old in the United States [1,2]. Diabetic retinopathy is characterized by vascular changes that lead to disruption of the blood retinal barrier, microaneurysms, hemorrhages, and late onset vascular proliferation [3,4]. Neuronal cell death at non-proliferative stages of diabetic retinopathy has also been observed in human disease and experimental models [5,6,7,8]. Glaucoma is characterized by the loss of retinal ganglion cell (RGCs) and elevated intraocular pressure (IOP) is a major risk factor. In addition, diabetic patients have higher IOP levels (+2 to 3 mmHg) than non-diabetic people [9,10,11,12]. While this increase in IOP is small, it has been suggested that the additional elevation in IOP could increase the stress on RGCs and consequently the risk of glaucomatous RGC loss [13].

Due to inconsistencies among epidemiological studies no clear association of diabetes with glaucoma has been established [13]. In fact, it has been suggested that early stages of diabetes may have neuroprotective effects on RGCs in glaucoma [14,15]. Similarly, two experimental studies inducing IOP elevation in diabetic rats reported contradictory results in terms of diabetes effects on the rate of progression of glaucomatous neurodegeneration [16,17].

One study reported that short-term hyperglycemia, a feature of diabetes, delayed axonal degeneration and RGC loss in a rat experimental model of glaucoma [15]. A second study, also in a rat experimental model, found that hyperglycemia increases apoptosis in RGCs after induced IOP elevation [16]. It is still unclear if diabetes affects glaucoma development or rate of progression, or if any effects of diabetes on glaucoma vary with genetic constitution.

Mouse models for diabetes have shown some pathological similarities to human diabetic retinopathy that include vascular leakage, RGC loss, and glial changes [6,18,19,20]. Akita mice have a single nucleotide substitution in the Insulin II gene (*Ins2^{Akita}*) that causes Type I diabetes. On the C57BL/6J (B6) genetic background, the Akita mutation causes protein misfolding, degeneration of the pancreatic β cells, and consequently hyperglycemia [21]. *B6.Ins2^{Akita}* mice also develop features of diabetic retinopathy including loss of RGCs [6,18]. DBA/2J mice, a commonly used genetic model of glaucoma, develop ocular hypertension (IOP elevation) that ultimately leads to the death of RGCs and optic nerve degeneration [22,23,24]. To study the role of genetic background on diabetes development and progression, the *Ins2^{Akita}* mutation has been backcrossed into the DBA/2J strain (*D2.Ins2^{Akita/+}* [25]). *D2.Ins2^{Akita/+}* mice develop diabetes that is comparable to *B6.Ins2^{Akita/+}* mice, but

they develop a more severe diabetic nephropathy. Here we use D2.*Ins2*^{Akita/+} mice to determine the contribution of diabetes to diabetic retinopathy, IOP elevation, and RGC loss in this genetic context.

Materials and Methods

Ethics Statement

The Jackson Laboratory animal care and use committee approved the research presented in this manuscript. All experiments were performed in compliance with the ARVO statement for use of animals in ophthalmic and vision research.

Mouse strain and husbandry

All mice were housed in a 14-hour-light/10-hour-dark cycle under previously described conditions [26]. Mice heterozygous for the *Ins2*^{Akita} mutation on the DBA/2J genetic background (D2.*Ins2*^{Akita/+}) were obtained from the Jackson Laboratory (Stock Number 007562). To produce experimental animals D2.*Ins2*^{Akita/+} mice were bred to DBA/2J mice. Siblings homozygous wild-type for the *Ins2* gene (D2.*Ins2*^{+/+}) were used as controls and housed with their diabetic littermates under the same conditions in the same animal facility to minimize environmental differences. A recent study has demonstrated that estrogen may protect female Akita mice against diabetes [27]. Because hyperglycemia in D2.*Ins2*^{Akita/+} female mice is limited and variable, only male mice were used for the study. Experiments were performed in male mice at 6 and 8.5 months old.

Assessment of diabetes-relevant phenotypes and survival

To determine *blood glucose levels*, the AlphaTRAK blood glucose monitoring system (Abbott) was used. A drop of blood after tail puncture was used for the test in 10 mice per genotype and age. Mice health condition was monitored weekly and body weight for all mice was measured monthly from wean age. This measurement offered an additional measure of disease progression and also allowed monitoring of the general health of the mice. The inability of a mouse to feed itself was established as a uniform humane end point for all mice. DietGel Recovery (Clear H₂O) barrier packs were provided in addition to the pellet food to mice that were reaching the established end point. When mice reached their end point, they were euthanized via cervical dislocation or by cardiac perfusion after anesthesia.

For the *FITC-dextran amine vascular permeability assay* 5 mice (10 retinas) per genotype were injected in the tail vein with FITC-dextran amine 70 kDa (FDA 100 µg/g; Invitrogen). After 30 min, mice were euthanized and whole eyes were fixed in 4% paraformaldehyde overnight (ON) at 4°C. Whole retinas were dissected and incubated with peroxidase (POD)-conjugated anti-FITC (1:1000, Roche) and FITC tyramide amplification (TSA, Perkin Elmer) was used for detection and amplification of the FITC signal in the retina. After tyramide amplification, retinas were incubated with GFAP antibody (Dako; 1:500) for four nights at 4°C, followed by incubation with secondary antibody for 2 hrs. Retinas were mounted with Aqua Poly/Mount. For quantitative analysis of GFAP staining in the retina, 2 pictures were taken per each of the 4 retinal quadrants in the retina periphery. GFAP fluorescence labeling was analyzed with the imaging software Imaris (Bitplane Scientific Software).

For the assessment of *diabetic nephropathy*, following cardiac perfusion and post-fixation with 4% paraformaldehyde, kidneys were dissected free, washed in PBS, weighed, and cryoprotected with 30% sucrose ON at 4°C. 12 µm cryosections were incubated

ON at 4°C with the following primary antibodies: Nestin (1:200, Chemicon); CD31 (PECAM1; 1:100, BD Pharmingen); MECA79 (1:50, Santa Cruz Biotechnology); and CD45 (1:100, BD Pharmingen). After PBT washes (PBS, 0.5% Triton-X100) sections were incubated in Alexa-conjugated secondary antibodies (1:1000, Invitrogen) for 2 hrs, incubated with DAPI and mounted with Aqua Poly/Mount.

Assessment of glaucoma-relevant phenotypes

Slit-lamp bio-microscopy was used to track iris disease in all mice and *IOP measurements* were performed as previously described [28,29], in 10 mice per genotype (20 eyes) at 6 months and 19 mice per genotype (38 eyes) at 8.5 months of age. IOP elevation in D2 mice is secondary to a depigmenting iris disease [30]. Slit lamp examination at age 6 and 8.5 months in 10 mice per genotype and age detected no differences in the iris disease of the diabetic D2.*Ins2*^{Akita/+} mice when compared with D2.*Ins2*^{+/+} mice. *Axon counts* were performed on retro-orbital optic nerve sections stained with paraphenylenediamine (PPD) as previously described [23,31]. Briefly, using the software ImageJ 1.48, axonal counts were performed by converting 20 images per optic nerve in one stack of images, cropping the stack of images and counting axons manually. Using Metamorph software, the total area counted as well as the total optic nerve area were tracked and used for the final count computation. The total counted area from the optic nerve was >10% and the final count was calculated and expressed as number of axons per optic nerve [22,23]. Ages and sample sizes are detailed in the results and figure legends. A one-way ANOVA was used for statistical analysis.

Axon transport analysis was performed on 4 (8 colliculi) 8.5-month-old mice. Alexa Fluor 488-Cholera Toxin subunit B (CTB) conjugate (Invitrogen) was injected into the vitreous as described previously [32]. After 72 hours, mice were anesthetized and euthanized via 4% paraformaldehyde cardiac perfusion. After perfusion and submersed fixation with 4% paraformaldehyde, brains were cryosectioned at 50 µm. Alexa Fluor 488 was visualized using a fluorescence microscope (Zeiss). For image quantification 8 pictures of each superior colliculus were taken and intensity statistics were generated after surface segmentation using the same threshold criteria (Imaris, Bitplane Scientific Software).

RGC quantification. Flat-mounted retinas were fixed in buffered 4% PFA ON at 4°C with gentle rocking, washed with PBT and incubated with rabbit polyclonal antibodies against tubulin β-III (TUBB3; 1:500, Sigma) and monoclonal GFAP (1:500, DakoCytomation) for four nights at 4°C. After PBT washes, the retinas were incubated in the respective Alexa-conjugated secondary antibodies (1:1000, Invitrogen) for 2 hrs. The retinas were washed in PBT and mounted in Aqua Poly/Mount (Polysciences). For quantification of TUBB3+ RGCs, four cuts were made in whole retinas to divided in 4 equal quadrants and two digital images (350 µm×350 µm) were taken in the peripheral retina in each quadrant. Manual counts were performed using the cell counter plugin from the ImageJ 1.48 software. Number of retinas per group has been included in the results and figure legends.

Statistical Analysis

Statistical analysis was performed using a commercially available statistical software package (JMP, version 10.0, USA). The results were expressed as mean ± SD. Statistical differences were assessed using one-way analysis of variance (ANOVA); p < 0.05 was considered statistically significant. Experiments were performed at least three times.

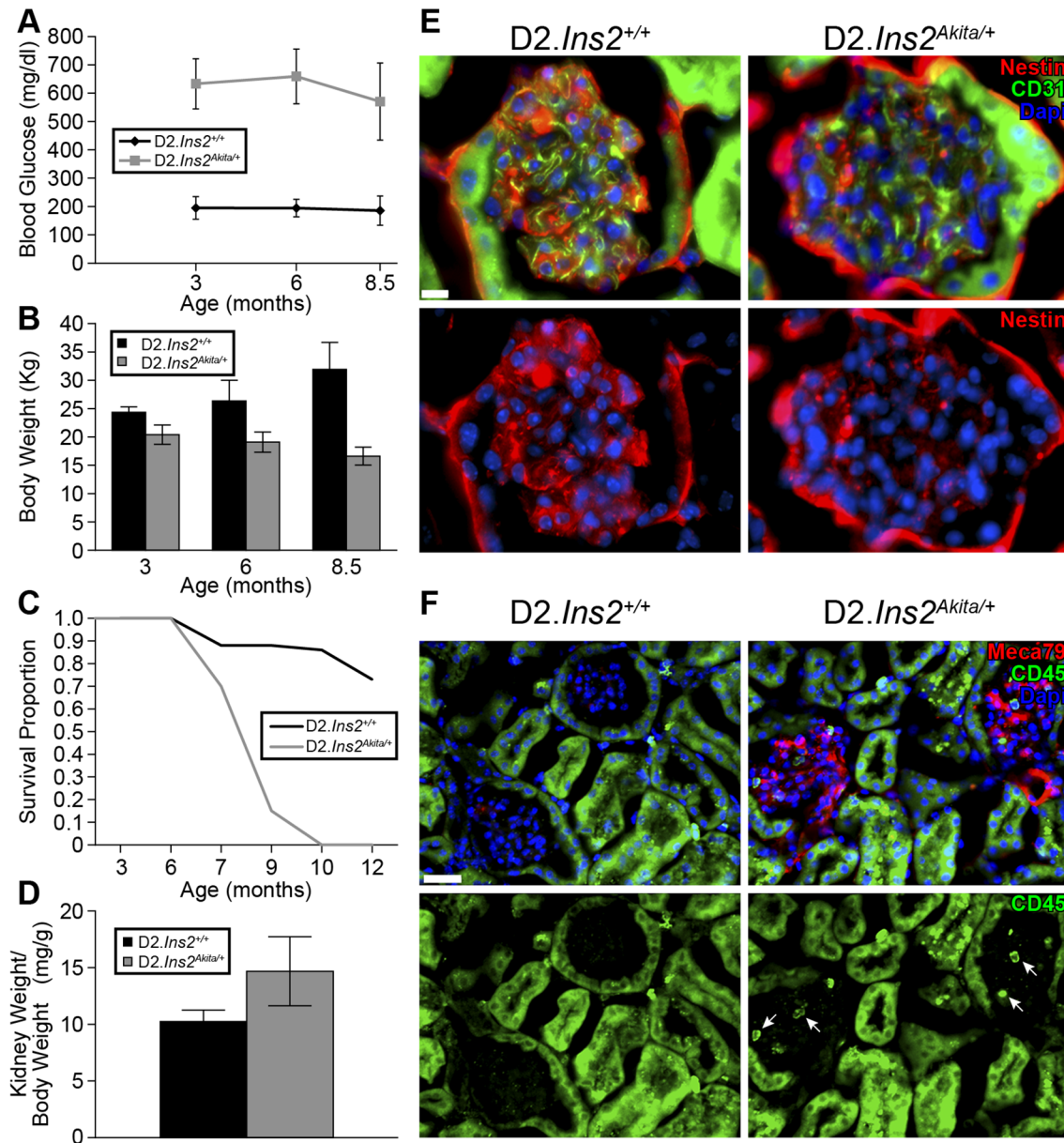


Figure 1. Severe kidney dysfunction and premature death in *D2.Ins2^{Akita/+}* mice. (A) High and sustained blood glucose levels were found in males *D2.Ins2^{Akita/+}* mice compared to their respective *D2.Ins2^{+/+}* littermates during the time of the study ($n = 10$ mice for each genotype and age; $p < 0.001$ for each age). (B) Severe loss of weight and wasting were found in *D2.Ins2^{Akita/+}* compared with *D2.Ins2^{+/+}* mice ($n = 10$ for each genotype and age; $p < 0.001$ each age). (C) Sudden and early death occurred in the diabetic *D2.Ins2^{Akita/+}* before 9 months ($n > 40$ mice). (D) Kidney weight/body weight ratio was significantly higher in *D2.Ins2^{Akita/+}* mice versus *D2.Ins2^{+/+}* ($n = 10$ kidneys). (E–F) Pathological changes associated with diabetic kidney disease at 6.5 months. (E) Decreased immunoreactivity of nestin was evident in *D2.Ins2^{Akita/+}* glomerulus when compared with *D2.Ins2^{+/+}* mice. No differences in CD31 immunoreactivity in the glomerular capillary loop were found between diabetic and wild-type mice. (F) MECA79 immunoreactivity was observed in the glomeruli of *D2.Ins2^{Akita/+}* mice, but not in *D2.Ins2^{+/+}* glomeruli. The MECA79 immunoreactivity was coincident with CD45 positive leukocytes (arrows) in these affected glomeruli. Non-specific green fluorescence in kidney tubules was observed. Scale bars: (E) 10 μm , (F) 30 μm .
doi:10.1371/journal.pone.0107291.g001

Results

D2.Ins2^{Akita/+} die prematurely, likely due to severe kidney dysfunction

To assess the impact of DBA/2J (*D2*) genetic background on diabetes-induced IOP elevation and RGC loss, cohorts of male *D2.Ins2^{Akita/+}* and *D2.Ins2^{+/+}* control mice were established and aged. Each cohort contained at least 40 mice. For each mouse, the levels of glucose in the blood were measured at 3, 6 and 8.5

months of age. Consistent with previous reports [25], *D2.Ins2^{Akita/+}* mice had significantly higher blood glucose levels than *D2.Ins2^{+/+}* control mice (Fig. 1A; $n = 10$; $p < 0.001$). However, at 6 and 8 months of age, *D2.Ins2^{Akita/+}* mice had significant weight loss compared *D2.Ins2^{+/+}* controls (Fig. 1B; $n = 10$ for each genotype; $p < 0.001$ for each age). The significant weight loss was followed by premature death of *D2.Ins2^{Akita/+}* mice by 9 months of age, with only 15% surviving, compared to 88% of *D2.Ins2^{+/+}* control mice (Fig. 1C; $n = 40$ for each genotype; $p < 0.001$).

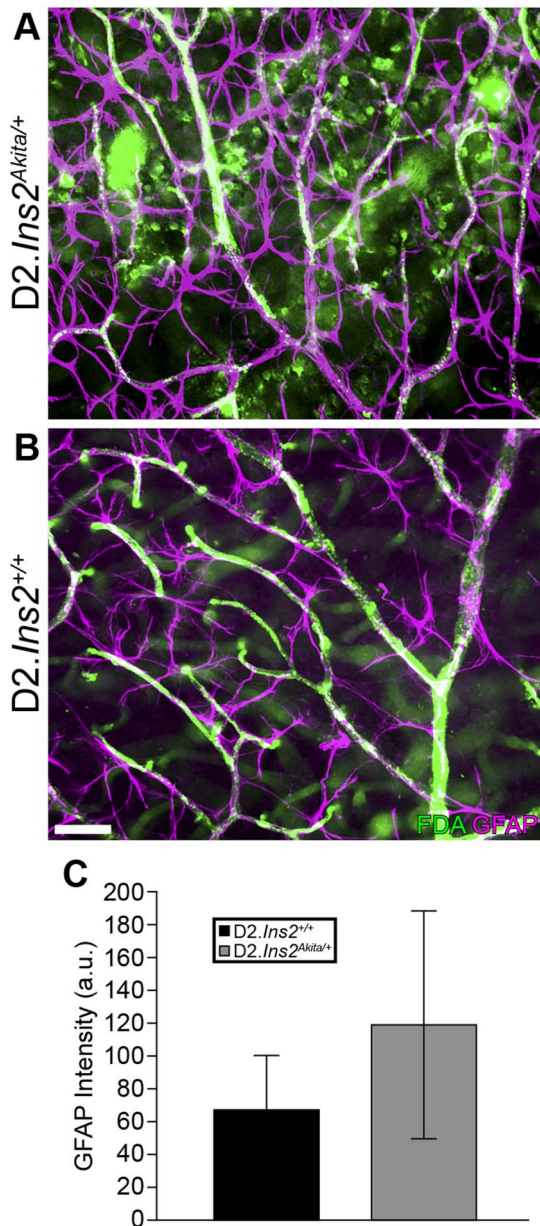


Figure 2. Vascular leakage and astrocytes reactivity in D2.*Ins2*^{Akita/+} retinas. (A, B) To determine if the Akita mutation caused an increase in vascular permeability in DBA/2J mice, systemic injections of FITC-dextran amine 70 kDa were made into 6 month old D2.*Ins2*^{+/+} and D2.*Ins2*^{Akita/+} mice. Astrocytes were labeled with GFAP (purple). While FITC fluorescence signal was restricted to blood vessels in D2.*Ins2*^{+/+} retinas (n = 10), there was clear leaked fluorescence signal in the majority of D2.*Ins2*^{Akita/+} retinas (8 out of 10 retinas examined). (C) GFAP fluorescence intensity (purple) was significantly increased in D2.*Ins2*^{Akita/+} retinal astrocytes when compared with D2.*Ins2*^{+/+} retinas ($p < 0.05$, n = 10). Scale bar: 50 μ m. doi:10.1371/journal.pone.0107291.g002

Given that D2.*Ins2*^{Akita/+} mice have severe albuminuria and kidney dysfunction by 6 months of age [25], the development of severe diabetic nephropathy and pyelonephritis have been proposed to be contributors of the increased mortality in D2.*Ins2*^{Akita/+} [33] but never fully determined. Therefore, the kidneys of D2.*Ins2*^{+/+} and D2.*Ins2*^{Akita/+} mice were examined. Significant kidney hypertrophy (determined by kidney weight/

body weight) was observed in D2.*Ins2*^{Akita/+} mice at 6 months of age compared with aged-matched control mice (Fig. 1D; n = 10 for each genotype; $p < 0.001$). At 6.5 months of age, immunoreactivity of nestin (a marker of podocytes in glomeruli) was greatly reduced in the glomeruli of D2.*Ins2*^{Akita/+} mice compared to D2.*Ins2*^{+/+} mice (Fig. 1E). Podocytes are essential for the function of the kidney and so this confirms significant kidney dysfunction in D2.*Ins2*^{Akita/+} mice. We also assessed inflammation as a second marker of kidney dysfunction using immunoreactivity for MECA79, an antibody that binds activated L-selectin ligands. MECA79 was detected in the glomerular capillary loops of kidneys from D2.*Ins2*^{Akita/+} mice and not present in D2.*Ins2*^{+/+} control mice (Fig. 1F). The activation of L-selectin coincided with the infiltration of CD45 positive leukocytes in the diabetic glomeruli (Fig. 1F) suggesting a chronic inflammatory response in the kidneys of D2.*Ins2*^{Akita/+} mice that was not observed in D2.*Ins2*^{+/+}. Therefore, our data add further evidence that severe kidney dysfunction is a major cause of premature death in D2.*Ins2*^{Akita/+} mice.

D2.*Ins2*^{Akita/+} mice show early stages of diabetic retinopathy

To assess the impact of diabetes on retinal phenotypes in D2.*Ins2*^{Akita/+} mice, retinal vascular permeability and reactive gliosis, two known pathological and early hallmarks of diabetic retinopathy [34] were assessed. Previously, it was shown that blood-retinal barrier (BRB) breakdown and reactive gliosis occur in B6.*Ins2*^{Akita/+} mice and that these changes preceded RGC loss and neuroinflammation [6,18,35]. To determine the impact of DBA/2J genetic background on BRB breakdown and reactive gliosis, retinas from 6 months old D2.*Ins2*^{Akita/+} and D2.*Ins2*^{+/+} mice were examined after systemic injection of FITC-dextran amine 70 kDa. In D2.*Ins2*^{Akita/+} mice, fluorescence signal was observed leaking from vessels and into surrounding regions and cells (Fig. 2A). Leakage of fluorescent tracer was observed in 80% (8 out of 10 eyes) of the flat-mounted retinas from D2.*Ins2*^{Akita/+} mice. Leakage of the fluorescent tracer was never observed in retinas from D2.*Ins2*^{+/+} mice (Fig. 2B; n = 10 retinas for each genotype). To assess reactive gliosis, levels of glial fibrillary acidic protein (GFAP), an astrocyte- and Müller glial cell-specific intermediate filament protein that is commonly upregulated in disease, was assessed. Expression of GFAP was significantly increased in retinal astrocytes and Müller glia surrounding leaking vessels in retinas from D2.*Ins2*^{Akita/+} mice compared to D2 controls (Fig. 2B–C). Together these data show that by six months of age that the D2.*Ins2*^{Akita/+} mice have clear signs of early stages of diabetic retinopathy.

Diabetes exacerbates IOP elevation in D2.*Ins2*^{Akita/+} mice

Hyperglycemia is associated with elevation of IOP in patients with diabetes [36] and IOP is a major risk factor for glaucoma. Male DBA/2J mice develop IOP elevation between 7 and 9 months of age [23,24]. Therefore, the impact of diabetes on IOP elevation was determined using D2.*Ins2*^{Akita/+} mice. IOP measurements were made at 6 months of age (prior to IOP elevation in male D2 mice, only males used in study see Methods) and 8.5 months of age (during IOP elevation). No significant difference in IOP elevation was found between D2.*Ins2*^{Akita/+} (13.22 ± 2.47) and D2.*Ins2*^{+/+} (11.62 ± 3.57) mice at 6 months of age (Fig. 3). However, IOP levels were significantly higher in the D2.*Ins2*^{Akita/+} (17.60 ± 4.30) mice at 8.5 months compared to D2.*Ins2*^{+/+} (13.90 ± 4.66) mice (Fig. 3, $p < 0.001$). This indicates that diabetes phenotypes exacerbate IOP elevation in DBA/2J mice.

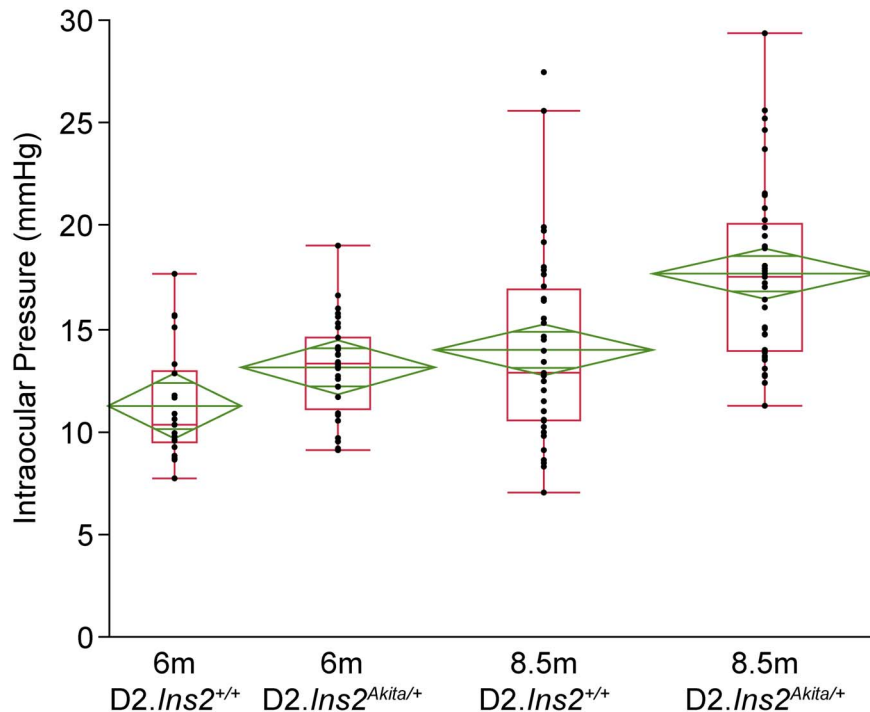


Figure 3. The Akita mutation increased IOP in DBA/2J mice. To determine if the Akita mutation caused an increase in IOP in DBA/2J mice, IOP were recorded from D2.*Ins2*^{+/+} and D2.*Ins2*^{Akita/+} mice at 6 and 8.5 months old. No significant differences in IOP measurements were found between diabetic D2.*Ins2*^{Akita/+} and D2.*Ins2*^{+/+} at 6 months of age (n = 20 eyes for each genotype; $p = 0.106$). However by 8.5 months diabetic D2.*Ins2*^{Akita/+} showed significant higher IOP levels when compared with wild type D2.*Ins2*^{+/+} (n = 38 eyes for each genotype; $p < 0.001$). doi:10.1371/journal.pone.0107291.g003

D2.*Ins2*^{Akita/+} mice do not show RGC dysfunction and loss

On the B6 genetic background the *Ins2*^{Akita/+} mutation causes significant RGC loss by 3 months of age in some studies [6,18] and by 6 months in others [37]. The vast majority of RGC loss due to IOP elevation occurs in DBA/2J mice between 10–12 months of age [23]. Since D2.*Ins2*^{Akita/+} are not generally viable past 9 months of age (Fig. 1), RGC loss was assessed in D2.*Ins2*^{Akita/+} mice at 8.5 months using an established method of counting TUBB3+ RGCs [38]. At this age, based on RGC loss at 3 to 6 months of age in B6.*Ins2*^{Akita/+} mice, which have less severe diabetes [6], there should be a long enough exposure to diabetes phenotypes to kill RGCs. Furthermore, the additional IOP insult in the D2 background, which is greater in D2.*Ins2*^{Akita/+} mice, would be expected to exacerbate the demise of RGCs [23,24]. Despite this, there was no detectable loss of RGCs in D2.*Ins2*^{Akita/+} mice at 8.5 months of age (Fig. 4).

To determine whether RGC axon integrity and function was diminished in D2.*Ins2*^{Akita/+} mice, a well-established optic nerve damage assessment protocol and an anterograde axon transport assessment were used (see Methods). For optic nerve assessment, optic nerve sections were stained using paraphenylenediamine (PPD) that differentially stains sick and dying axons [23,31]. PPD stained nerves were analyzed using a validated system for assessing optic neuropathy [23,31]. PPD staining can also detect damage to single axons. Thus, it can also reveal subtle differences in RGC axon damage between D2.*Ins2*^{Akita/+} and D2.*Ins2*^{+/+} mice. Consistent with the data analyzing RGC somas (see above), there was no optic nerve damage present in either D2.*Ins2*^{Akita/+} or D2.*Ins2*^{+/+} mice (Fig. 5A–C). This observation was confirmed by axon counting (Fig. 5C). Anterograde axonal transport dysfunction is a measure of RGC function and occurs prior to RGC axon degeneration in glaucoma [39]. Anterograde axonal transport was examined in the

superior colliculus of D2.*Ins2*^{Akita/+} and D2.*Ins2*^{+/+} mice using the fluorescent tracer Alexa Fluor 488-CTB. No significant differences were observed between D2.*Ins2*^{Akita/+} or D2.*Ins2*^{+/+} mice indicating that, by this measure, RGC axons appear to be functioning normally (Fig. 5D–F).

Discussion

The DBA/2J inbred mouse strain is widely used to study a variety of human diseases particularly ocular hypertension and glaucoma. DBA/2J mice have also been shown to be susceptible to kidney dysfunction and disease [25,40]. As diabetes has been suggested to be a risk factor for IOP elevation, glaucoma and kidney disease we used male mice from the DBA/2J.*Ins2*^{Akita/+} strain to assess the impact of diabetes on retinal and optic nerve phenotypes and kidney dysfunction. Our data show that D2.*Ins2*^{Akita/+} mice die prematurely and this is likely due to a severe kidney dysfunction, more severe than that observed in B6.*Ins2*^{Akita/+} mice. This confirms previous findings that the DBA/2J genetic background harbors genetic loci that predispose DBA/2J mice to kidney dysfunction. Several quantitative trait loci have been identified previously [40] but the underlying genetic variations remain unknown. The severity of the kidney phenotype in DBA/2J.*Ins2*^{Akita/+} mice makes this strain an attractive model for identifying specific genetic variations that underlie susceptibility to diabetic nephropathy.

Analysis of kidneys from male D2.*Ins2*^{Akita/+} mice showed a significant renal hypertrophy that was accompanied by a decrease in glomerular-specific nestin immunoreactivity at 6.5 months of age. It has been shown that downregulation of nestin by podocytes in the glomerulus [41,42], is correlated with apoptosis induction in podocytes during diabetes-induced hyperglycemia [43]. Loss of

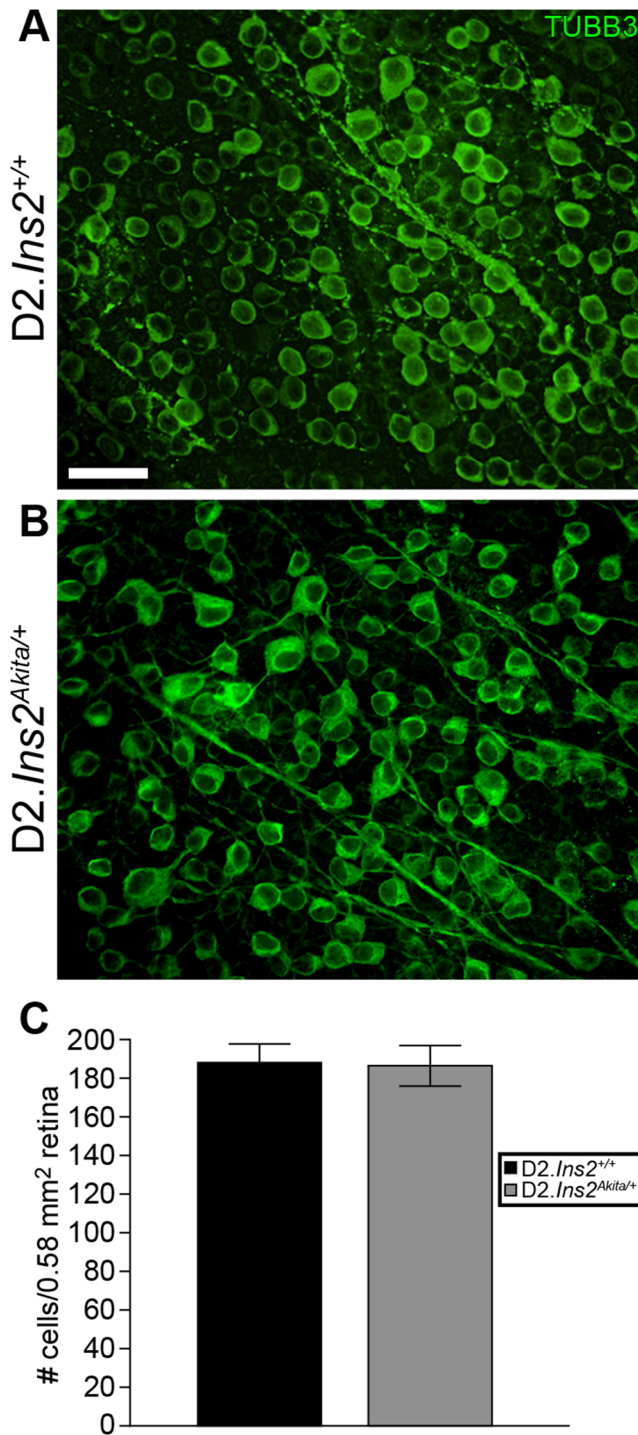


Figure 4. The Akita mutation does not cause RGC death out to 8.5 months of age in DBA/2J mice. (A, B) To determine if the Akita mutation leads to RGC loss in DBA/2J mice, retinas from 8.5 month old D2.Ins2^{Akita/+} and D2.Ins2^{+/+} mice were stained for the RGC marker TUBB3+. (C) TUBB3+ cell counts showed that there was no significant difference in RGCs detected in retinas of D2.Ins2^{Akita/+} mice compared with D2.Ins2^{+/+} mice (n=8 retinas for each genotype; $p=0.138$). Scale bar: 30 μm . doi:10.1371/journal.pone.0107291.g004

podocytes in diabetic nephropathy leads to proteinuria and renal failure [44]. We also found evidence of activation of L-selectin ligands by endothelial cells in the glomerular capillary loop of

diabetic kidneys suggesting a chronic inflammatory response. Kidneys from D2.Ins2^{Akita/+} mice showed positive immunoreactivity for the MECA79 antibody, which recognizes the sulfated form of L-selectin ligands in endothelial cells [45]. Sulfation of L-selectin ligands is necessary for the mediation of leukocyte migration to tissues and lymph nodes [45]. In our study, infiltrated leukocytes, positive for CD45, were observed in D2.Ins2^{Akita/+} glomeruli that were also positive for MECA79. Leukocyte infiltration and activation of inflammatory pathways have also been implicated in the pathology of diabetic nephropathy suggesting a main role of inflammation in renal failure [46]. Although there is no evidence of causative correlation between kidney disease and glaucoma, several genetic disorders such as nail-patella syndrome (LMX1B), oculocerebrorenal syndrome (OCRL) and mutations in the type IV collagen gene (COL4A1), are associated with both development of nephropathy and developmental glaucoma [47,48,49,50]. Due to the premature death of D2.Ins2^{Akita/+} mice, we were not able to fully explore the impact of severe diabetic nephropathy on DBA/2J glaucoma, although no premature loss of RGCs was observed at 8.5 months of age.

The Akita mutation has previously been shown to cause diabetic retinopathy on a B6 background where loss of RGCs is evident as early as 3 months of age [6,18,37]. Contrary to what has been reported in the B6.Ins2^{Akita} mouse, no loss of RGCs was found in the D2.Ins2^{Akita/+} at 8.5 months of age, suggesting that the DBA/2J strain is more resistant to diabetes-induced RGC death than the C57BL/6J strain. D2.Ins2^{Akita/+} do however, show vascular phenotypes commonly associated with diabetic retinopathy, particularly vascular permeability and reactive gliosis. Increased vascular permeability, fluid leakage, deficits in blood flow that lead to hypoxia of retinal tissue, and vascular proliferation are among the most common and diagnosed manifestations of diabetic retinopathy [3,4]. Although it has been generally thought that neuronal loss in the retina occurs as a consequence of physical breaking of the retinal architecture by proliferative vessels, several studies have shown early loss of RGCs in human and experimental diabetic retinas [5,6,7,8]. Our data, showing vascular leakage but no RGC loss support that at least in some cases, vascular phenotypes precede RGC loss or appear in the absence of RGC loss.

Unfortunately, because of the severe kidney phenotype, we were not able to assess the affects of diabetes on glaucomatous optic neuropathy as this occurs in DBA/2J mice after 9 months of age. However, given that diabetic patients present higher IOP profiles than non-diabetics [9,10,11], the D2.Ins2^{Akita/+} mice do survive long enough to address whether the Akita mutation alters susceptibility to IOP elevation, a major risk factor for glaucoma. Similarly to what has been found in humans, the D2.Ins2^{Akita/+} mice have a significant increase in IOP at 8.5 months old when compared with wild-type DBA/2J mice. Despite the increase in IOP, coupled with the increase the severity of diabetic nephropathy, in D2.Ins2^{Akita/+} mice compared to D2.Ins2^{+/+}, no significant differences were detected in ganglion cell loss or in early signs of glaucoma progression including axonal transport. Although several epidemiological studies have suggested diabetes as a risk factor for glaucoma, other studies have not found any association between both diseases [13]. These conflicting results could reside in the different experimental approaches, diagnostics and population used for these studies. Further, these conflicting reports suggest genetic susceptibility plays a major part in disease outcomes, something supported by the differences in both kidney and retinal outcome between the B6 and D2 strains.

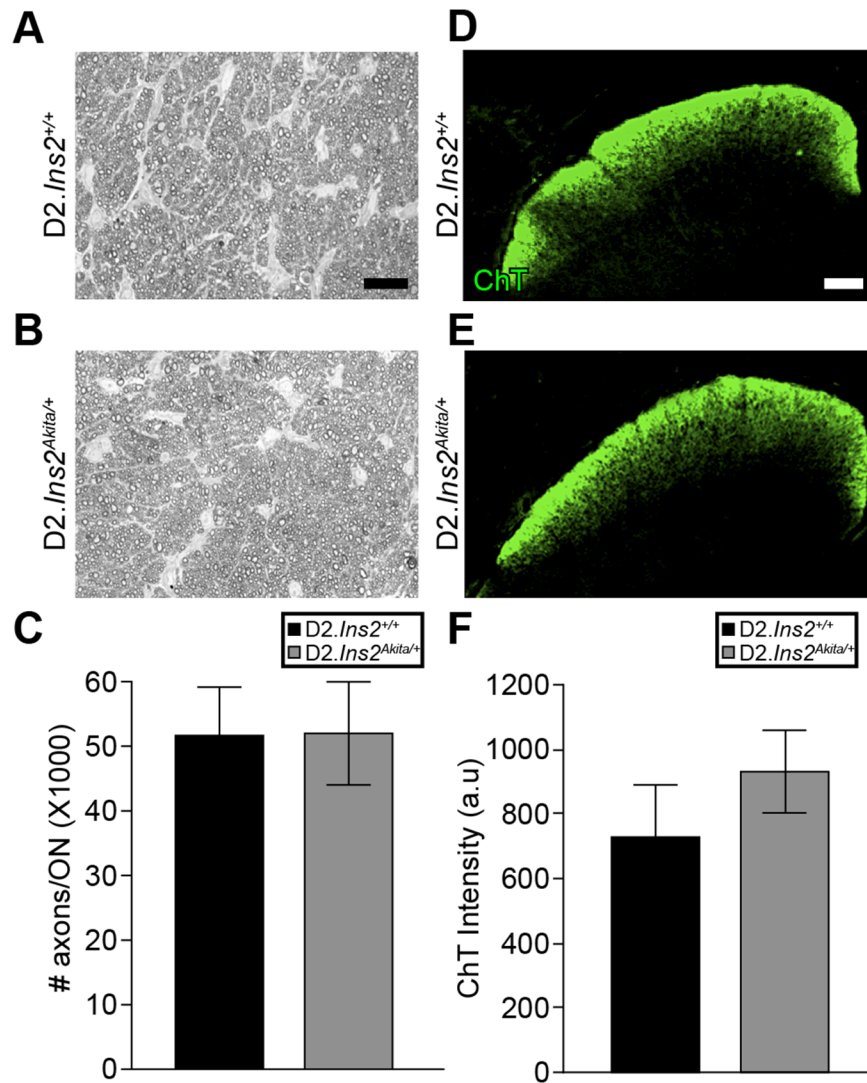


Figure 5. The Akita mutation does not result in early axon degeneration or axon transport deficiency in DBA/2J mice. Optic nerve degeneration is a hallmark of glaucoma and optic neuropathies. To determine if the Akita mutation leads to RGC axon loss and optic nerve degeneration in DBA/2J mice, optic nerves from 8.5 month old D2.Ins2^{Akita/+} and D2.Ins2^{+/+} mice was assessed using PPD staining (A, B). All of the optic nerves examined from both diabetic and wild-type mice were categorized as having mild damage, which means there was no detectable (or only a low level of damage) damage that is consistent with aged and genetically matched wild-type mice that do not develop glaucoma or diabetic retinopathy. (C) Quantitative analysis of axon counts in 8.5 months old optic nerves showed no differences between D2.Ins2^{+/+} and D2.Ins2^{Akita/+} (n = 20 optic nerves for each genotype; p = 0.894). (D–F) Loss of axon transport is a sensitive and early sign of a glaucomatous insult to RGCs and/or RGC dysfunction. To determine if the Akita mutation leads to disruptions in RGC axon transport in DBA/2J mice, intravitreal injections of a fluorescently labeled tracer, CTB-488, were made into 8.5 month old D2.Ins2^{Akita/+} and D2.Ins2^{+/+} eyes. (D, E) the superior colliculi of 8.5 months old D2.Ins2^{Akita/+} mice appeared to fill the same as age-matched D2.Ins2^{+/+} mice. (F) Quantification of the fluorescent intensity showed there was no significant difference between D2.Ins2^{+/+} and D2.Ins2^{Akita/+} mice (n = 8 colliculi for each genotype; p = 0.428). Scale bar: (A, B) 50 μ m, (D, E) 150 μ m. doi:10.1371/journal.pone.0107291.g005

We found that chronic diabetes in the DBA/2J mouse increases IOP but does not accelerate the development of early glaucoma in these mice. Also, early signs of glaucomatous RGC dysfunction, such as anterograde axonal transport and axonal degeneration, were not different between diabetic and non-diabetic DBA/2J mice. Therefore, it remains unanswered as to whether diabetes would be an additive stressor to later stage glaucomatous RGC loss in DBA/2J mice or even neuroprotective. A recent epidemiological study suggested that early stages of diabetes could be neuroprotective for glaucoma [14,15]. Similarly, an experimental study in rat demonstrated neuroprotective effects of diabetes during acute induction of IOP elevation [16]. However, other studies have demonstrated that after optic nerve crush, DBA/2J

RGCs are more resistant to RGC death than C57BL/6 due to a genetic locus [51,52], suggesting that a genetic factor independent of diabetes may be responsible for the strain difference in RGC susceptibility. Identifying such a factor would provide important information for developing drug therapies for treating diabetic complications and RGC loss.

Acknowledgments

The authors wish to thank Amy Bell for IOP measurements, Mimi DeVries for help with colony management, Marge Strobl for advice on diabetes phenotypes and Ron Korstanje for advice on kidney phenotyping. This work was supported by EY011721 (SWMJ) and also by EY021525 (GRH).

EY018606 (RTL) and the Barbara and Joseph Cohen Foundation. Simon John is an Investigator of the Howard Hughes Medical Institute.

Author Contributions

Conceived and designed the experiments: SWMJ IS GRH. Performed the experiments: IS CWJ JLK. Analyzed the data: IS GRH RTL. Contributed to the writing of the manuscript: IS GRH RTL SWMJ.

References

- Qian H, Ripps H (2011) Neurovascular interaction and the pathophysiology of diabetic retinopathy. *Exp Diabetes Res*: 693426.
- Moss SE, Klein R, Klein BE (1988) The incidence of vision loss in a diabetic population. *Ophthalmology* 95: 1340–1348.
- Frank RN (2004) Diabetic retinopathy. *N Engl J Med* 350: 48–58.
- Crawford TN, Alfaro DV, 3rd, Kerrison JB, Jablon EP (2009) Diabetic retinopathy and angiogenesis. *Curr Diabetes Rev* 5: 8–13.
- Abu-El-Asrar AM, Dralands L, Missotten L, Al-Jadaan IA, Geboes K (2004) Expression of apoptosis markers in the retinas of human subjects with diabetes. *Invest Ophthalmol Vis Sci* 45: 2760–2766.
- Barber AJ, Antonetti DA, Kern TS, Reiter CE, Soans RS, et al. (2005) The *Ins2^{Akita}* mouse as a model of early retinal complications in diabetes. *Invest Ophthalmol Vis Sci* 46: 2210–2218.
- Barber AJ, Lieth E, Khin SA, Antonetti DA, Buchanan AG, et al. (1998) Neuronal apoptosis in the retina during experimental and human diabetes. Early onset and effect of insulin. *J Clin Invest* 102: 783–791.
- Kern TS, Barber AJ (2008) Retinal ganglion cells in diabetes. *J Physiol* 586: 4401–4408.
- Becker B (1971) Diabetes mellitus and primary open-angle glaucoma. The XXVII Edward Jackson Memorial Lecture. *Am J Ophthalmol* 71: 1–16.
- Tielsch JM, Katz J, Quigley HA, Javitt JC, Sommer A (1995) Diabetes, intraocular pressure, and primary open-angle glaucoma in the Baltimore Eye Survey. *Ophthalmology* 102: 48–53.
- Klein BE, Klein R, Moss SE (1984) Intraocular pressure in diabetic persons. *Ophthalmology* 91: 1356–1360.
- Armstrong JR, Daily RK, Dobson HL, Girard LJ (1960) The incidence of glaucoma in diabetes mellitus. A comparison with the incidence of glaucoma in the general population. *Am J Ophthalmol* 50: 55–63.
- Wong VH, Bui BV, Vingrys AJ (2011) Clinical and experimental links between diabetes and glaucoma. *Clin Exp Optom* 94: 4–23.
- Gordon MO, Beiser JA, Kass MA (2008) Is a history of diabetes mellitus protective against developing primary open-angle glaucoma? *Arch Ophthalmol* 126: 280–281.
- Quigley HA (2009) Can diabetes be good for glaucoma? Why can't we believe our own eyes (or data)? *Arch Ophthalmol* 127: 227–229.
- Ebneter A, Chidlow G, Wood JP, Casson RJ (2011) Protection of retinal ganglion cells and the optic nerve during short-term hyperglycemia in experimental glaucoma. *Arch Ophthalmol* 129: 1337–1344.
- Kanamori A, Nakamura M, Mukuno H, Maeda H, Negi A (2004) Diabetes has an additive effect on neural apoptosis in rat retina with chronically elevated intraocular pressure. *Curr Eye Res* 28: 47–54.
- Gastinger MJ, Kunselman AR, Conboy EE, Bronson SK, Barber AJ (2008) Dendrite remodeling and other abnormalities in the retinal ganglion cells of *Ins2^{Akita}* diabetic mice. *Invest Ophthalmol Vis Sci* 49: 2635–2642.
- Martin PM, Roon P, Van Ells TK, Ganapathy V, Smith SB (2004) Death of retinal neurons in streptozotocin-induced diabetic mice. *Invest Ophthalmol Vis Sci* 45: 3330–3336.
- Zheng L, Du Y, Miller C, Gubitosi-Klug RA, Ball S, et al. (2007) Critical role of inducible nitric oxide synthase in degeneration of retinal capillaries in mice with streptozotocin-induced diabetes. *Diabetologia* 50: 1987–1996.
- Yoshioka M, Kayo T, Ikeda T, Koizumi A (1997) A novel locus, *Mody4*, distal to *D7Mit189* on chromosome 7 determines early-onset NIDDM in nonobese *C57BL/6* (*Akita*) mutant mice. *Diabetes* 46: 887–894.
- Anderson MG, Libby RT, Gould DB, Smith RS, John SW (2005) High-dose radiation with bone marrow transfer prevents neurodegeneration in an inherited glaucoma. *Proc Natl Acad Sci U S A* 102: 4566–4571.
- Libby RT, Anderson MG, Pang IH, Robinson ZH, Savinova OV, et al. (2005) Inherited glaucoma in *DBA/2J* mice: pertinent disease features for studying the neurodegeneration. *Vis Neurosci* 22: 637–648.
- Libby RT, Li Y, Savinova OV, Barter J, Smith RS, et al. (2005) Susceptibility to neurodegeneration in a glaucoma is modified by *Bax* gene dosage. *PLoS Genet* 1: 17–26.
- Gurley SB, Mach CL, Stegbauer J, Yang J, Snow KP, et al. (2010) Influence of genetic background on albuminuria and kidney injury in *Ins2(+)/C96Y* (*Akita*) mice. *Am J Physiol Renal Physiol* 298: F788–795.
- Smith RS, Zabaleta A, Kume T, Savinova OV, Kidson SH, et al. (2000) Haploinsufficiency of the transcription factors *FOXC1* and *FOXC2* results in aberrant ocular development. *Hum Mol Genet* 9: 1021–1032.
- Zhang Y, Welzig CM, Picard KL, Du C, Wang B, et al. (2014) Glycogen synthase kinase-3 β inhibition ameliorates cardiac parasympathetic dysfunction in type 1 diabetic *Akita* mice. *Diabetes* 63: 2097–2113.
- John SW, Smith RS, Savinova OV, Hawes NL, Chang B, et al. (1998) Essential iris atrophy, pigment dispersion, and glaucoma in *DBA/2J* mice. *Invest Ophthalmol Vis Sci* 39: 951–962.
- John SW, Hageman JR, MacTaggart TE, Peng L, Smithes O (1997) Intraocular pressure in inbred mouse strains. *Invest Ophthalmol Vis Sci* 38: 249–253.
- Anderson MG, Smith RS, Hawes NL, Zabaleta A, Chang B, et al. (2002) Mutations in genes encoding melanosomal proteins cause pigmentary glaucoma in *DBA/2J* mice. *Nature genetics* 30: 81–85.
- Smith RZ, A, John SW (2002) Light Microscopy. In *Systematic Evaluation of the Mouse Eye: Anatomy, Pathology and Biometrics*; Smith RJ, SWMJ; Nishina, PM; Sundberg, JP, editor. Boca Raton, Florida: CRC Press.
- Howell GR, Soto I, Zhu X, Ryan M, Macalinao DG, et al. (2012) Radiation treatment inhibits monocyte entry into the optic nerve head and prevents neuronal damage in a mouse model of glaucoma. *J Clin Invest* 122: 1246–1261.
- Brosius FC, 3rd, Alpers CE, Bottinger EP, Breyer MD, Coffman TM, et al. (2009) Mouse models of diabetic nephropathy. *J Am Soc Nephrol* 20: 2503–2512.
- Yuan Z (2007) The characteristics of patients presenting with advanced proliferative diabetic retinopathy in Shanxi Eye Hospital, China. *Community Eye Health* 20: 73.
- Han Z, Guo J, Conley SM, Naash MI (2013) Retinal angiogenesis in the *Ins2(Akita)* mouse model of diabetic retinopathy. *Investigative ophthalmology & visual science* 54: 574–584.
- Oshitari T, Fujimoto N, Hanawa K, Adachi-Usami E, Roy S (2007) Effect of chronic hyperglycemia on intraocular pressure in patients with diabetes. *Am J Ophthalmol* 143: 363–365.
- Hombrebueno JR, Chen M, Penalva RG, Xu H (2014) Loss of Synaptic Connectivity, Particularly in Second Order Neurons Is a Key Feature of Diabetic Retinal Neuropathy in the *Ins2^{Akita}* Mouse. *PLoS one* 9: e97970.
- Howell GR, Soto I, Ryan M, Graham LC, Smith RS, et al. (2013) Deficiency of complement component 5 ameliorates glaucoma in *DBA/2J* mice. *Journal of neuroinflammation* 10: 76.
- Nickells RW, Howell GR, Soto I, John SW (2012) Under pressure: cellular and molecular responses during glaucoma, a common neurodegeneration with axonopathy. *Annu Rev Neurosci* 35: 153–179.
- Sheehan S, Tsaih SW, King BL, Stanton C, Churchill GA, et al. (2007) Genetic analysis of albuminuria in a cross between *C57BL/6j* and *DBA/2J* mice. *American journal of physiology Renal physiology* 293: F1649–1656.
- Perry J, Ho M, Viero S, Zheng K, Jacobs R, et al. (2007) The intermediate filament nestin is highly expressed in normal human podocytes and podocytes in glomerular disease. *Pediatr Dev Pathol* 10: 369–382.
- Su W, Chen J, Yang H, You L, Xu L, et al. (2007) Expression of nestin in the podocytes of normal and diseased human kidneys. *Am J Physiol Regul Integr Comp Physiol* 292: R1761–1767.
- Liu W, Zhang Y, Hao J, Liu S, Liu Q, et al. (2012) Nestin protects mouse podocytes against high glucose-induced apoptosis by a *Cdk5*-dependent mechanism. *J Cell Biochem*.
- Jefferson JA, Shankland SJ, Pichler RH (2008) Proteinuria in diabetic kidney disease: a mechanistic viewpoint. *Kidney Int* 74: 22–36.
- Uchimura K, Rosen SD (2006) Sulfated L-selectin ligands as a therapeutic target in chronic inflammation. *Trends Immunol* 27: 559–565.
- Navarro-Gonzalez JF, Mora-Fernandez C, Muros de Fuentes M, Garcia-Perez J (2011) Inflammatory molecules and pathways in the pathogenesis of diabetic nephropathy. *Nat Rev Nephrol* 7: 327–340.
- Bongers EM, Huysmans FT, Levchenko E, de Rooy JW, Blickman JG, et al. (2005) Genotype-phenotype studies in nail-patella syndrome show that *LMX1B* mutation location is involved in the risk of developing nephropathy. *Eur J Hum Genet* 13: 935–946.
- Walton DS, Katsavounidou G, Lowe CU (2005) Glaucoma with the oculocerebrorenal syndrome of Lowe. *J Glaucoma* 14: 181–185.
- Kruger SJ, Wilson ME, Jr., Hutchinson AK, Peterseim MM, Bartholomew LR, et al. (2003) Cataracts and glaucoma in patients with oculocerebrorenal syndrome. *Arch Ophthalmol* 121: 1234–1237.
- Vahedi K, Alamowitch S (2011) Clinical spectrum of type IV collagen (*COL4A1*) mutations: a novel genetic multisystem disease. *Curr Opin Neurol* 24: 63–68.
- Li Y, Semaan SJ, Schlamp CL, Nickells RW (2007) Dominant inheritance of retinal ganglion cell resistance to optic nerve crush in mice. *BMC Neurosci* 8: 19.
- Templeton JP, Nassr M, Vazquez-Chona F, Freeman-Anderson NE, Orr WE, et al. (2009) Differential response of *C57BL/6j* mouse and *DBA/2J* mouse to optic nerve crush. *BMC Neurosci* 10: 90.