



# Effects of Biochar on Soil Microbial Biomass after Four Years of Consecutive Application in the North China Plain

Qing-zhong Zhang<sup>1\*</sup>, Feike A. Dijkstra<sup>2</sup>, Xing-ren Liu<sup>1</sup>, Yi-ding Wang<sup>1</sup>, Jian Huang<sup>1</sup>, Ning Lu<sup>1</sup>

**1** Key Laboratory of Agricultural Environment, Ministry of Agriculture, Sino-Australian Joint Laboratory For Sustainable Agro-Ecosystems, Institute of Environment and Sustainable Development in Agriculture, Chinese Academy of Agricultural Sciences, Beijing, China, **2** Centre for Carbon, Water and Food, Department of Environmental Sciences, The University of Sydney, Camden, New South Wales, Australia

## Abstract

The long term effect of biochar application on soil microbial biomass is not well understood. We measured soil microbial biomass carbon (MBC) and nitrogen (MBN) in a field experiment during a winter wheat growing season after four consecutive years of no (CK), 4.5 (B4.5) and 9.0 t biochar ha<sup>-1</sup> yr<sup>-1</sup> (B9.0) applied. For comparison, a treatment with wheat straw residue incorporation (SR) was also included. Results showed that biochar application increased soil MBC significantly compared to the CK treatment, and that the effect size increased with biochar application rate. The B9.0 treatment showed the same effect on MBC as the SR treatment. Treatments effects on soil MBN were less strong than for MBC. The microbial biomass C:N ratio was significantly increased by biochar. Biochar might decrease the fraction of biomass N mineralized ( $K_N$ ), which would make the soil MBN for biochar treatments underestimated, and microbial biomass C:N ratios overestimated. Seasonal fluctuation in MBC was less for biochar amended soils than for CK and SR treatments, suggesting that biochar induced a less extreme environment for microorganisms throughout the season. There was a significant positive correlation between MBC and soil water content (SWC), but there was no significant correlation between MBC and soil temperature. Biochar amendments may therefore reduce temporal variability in environmental conditions for microbial growth in this system thereby reducing temporal fluctuations in C and N dynamics.

**Citation:** Zhang Q-z, Dijkstra FA, Liu X-r, Wang Y-d, Huang J, et al. (2014) Effects of Biochar on Soil Microbial Biomass after Four Years of Consecutive Application in the North China Plain. PLoS ONE 9(7): e102062. doi:10.1371/journal.pone.0102062

**Editor:** Andrew C. Singer, NERC Centre for Ecology & Hydrology, United Kingdom

**Received:** May 5, 2014; **Accepted:** June 15, 2014; **Published:** July 15, 2014

**Copyright:** © 2014 Zhang et al. This is an open-access article distributed under the terms of the Creative Commons Attribution License, which permits unrestricted use, distribution, and reproduction in any medium, provided the original author and source are credited.

**Data Availability:** The authors confirm that all data underlying the findings are fully available without restriction. All relevant data are within the paper, and can be obtained by email.

**Funding:** This work was supported by the S & T Innovation Program of Chinese Academy of Agricultural Sciences. The funders had no role in study design, data collection and analysis, decision to publish, or preparation of the manuscript.

**Competing Interests:** The authors have declared that no competing interests exist.

\* Email: ecologyouth@126.com

## Introduction

Biochar is the product of the thermal degradation of organic materials in the absence of air (pyrolysis) and is distinguished from charcoal by its use as a soil amendment [1]. Application of biochar has been proposed as a novel approach to improve soil fertility, increase soil carbon sequestration and mitigate the greenhouse effect [2]. Nevertheless, the turnover of soil organic matter and biochar and their interaction in soils remain poorly understood. Positive and negative priming effects on native organic carbon mineralization in biochar-amended soils have been reported [3–6], and the priming direction is thought to be controlled by the biochar type (determined by production conditions and sources used) and soil pH. Moreover, the presence of soil organic matter can stimulate the mineralization of the more labile components of biochar over the short term, but over the long term, the biochar-soil interaction may enhance soil C storage via processes of organic matter sorption to biochar and physical protection [3,5,6]. There is strong evidence that priming effect on soil organic matter decomposition relies on microbial biomass [7]. Research on soil microbial biomass dynamics with biochar application will help the understanding of priming effect on soil organic matter and biochar

decomposition. Biochar addition can increase soil microbial biomass, and may also affect the soil biological community composition, which in turn will affect nutrient cycling, plant growth, and greenhouse gas emission, as well as soil organic carbon mineralization mentioned above [1].

However, the present knowledge on soil microbial biomass dynamics due to biochar application is mainly based on the comparison between biochar application and no biochar treatment without considering crop residue return practice, and lacks long-term field experimental data [8–12]. Our field experiment with consecutive biochar amendments and crop residue return lasted nearly 4 years in a winter wheat-maize relay cropping system until October 2010, with total inputs of biochar ranging from 18.0 to 36.0 t ha<sup>-1</sup>. The aim of this paper is to examine effects of biochar and wheat straw residue incorporation on the temporal and spatial variation in microbial biomass carbon (MBC) and microbial biomass nitrogen (MBN) measured within a wheat growing season under different soil depths after four years of consecutive application.

## Materials and Methods

### Site description

The field experiment was conducted at an experimental station (36°58'N, 117°59'E, elevation 17 m) for ecological and sustainability research in Huantai County, Shandong Province, China, and was begun in 2007 [13]. This site has a warm, temperate, continental monsoon climate with a mean annual temperature of 12.4°C. The mean annual precipitation was 600 mm, with most rainfall occurring in June, July, and August. The soil is classified to Fluvisol Cambisol according to the USDA system. The soil was a sandy loam, and the proportion of sand, silt, and clay particles in the top 20 cm of soil was 70.8, 26.9, and 2.3%, respectively. The soil bulk density of the top 20 cm of soil before the biochar amendment was 1.52 g cm<sup>-3</sup>, and the soil organic matter (SOM) content was 15 g kg<sup>-1</sup> of soil. The soil pH was 8.1 before experiment, and was not significantly changed due to biochar amendment [13].

### Biochar

Milled biochar was purchased from a local company (Jinfu Biochar Company, Liaoning Province), with a density of 0.297 g cm<sup>-3</sup> and a pH of 8.2 [14]. The biochar was made by incomplete self-combustion of crushed corncob in an open-top concrete tank with an igniting apparatus at the bottom for about 24 hours at about 360°C. The incomplete self-combustion process did not need an external energy source. The biochar contained 65.7% carbon and 0.909% N (analyzed with an elemental analysis apparatus, Flash EA 2000, Thermo Electron Corporation, Italy). Available phosphorus content was 0.08% (extracted with 0.5 M NaHCO<sub>3</sub> at a pH of 8.5, and analyzed with a colorimetric method), and available potassium content was 1.60% (extracted with 2.0 M HNO<sub>3</sub>, and analyzed with a flare photometer, FP640, Cary, China). Ash content of the biochar was 72.0% (determined by dry combustion in a muffle furnace at 550°C for 2 h).

### Experimental design

The experimental crops were winter wheat (*Triticum aestivum* L.) and maize (*Zea mays* L.) in relay cropping. Generally, the maize was sown in early June and matured in late September. The winter wheat was then sown in early October and harvested in early June of the next year. The field experiment was a randomized complete block design and each of the experimental plots was 6 m × 6 m = 36 m<sup>2</sup>, four treatments (CK, B4.5, B9.0, SR) with three replications. The experiment included a control treatment with no biochar addition (CK), two biochar treatments with 4.5 and 9.0 t ha<sup>-1</sup> yr<sup>-1</sup> biochar applied (B4.5 and B9.0, respectively), and a treatment where all wheat and maize straw residue produced in the plot was returned to the field and incorporated into the soil after harvest by a straw returning machine (SR), which allowed us to compare biochar vs. fresh litter effects on microbial biomass. Based on the estimated total amount of aboveground crop residues of about 15 t ha<sup>-1</sup> yr<sup>-1</sup> for local normal croplands and the empirical value of about 30% in weight of crop residues left as biochar from the local biochar company, biochar amount can be obtained from the field crop residues is equivalent to that used in the B4.5 treatment.

The biochar was distributed equally to each crop (half applied before sowing of wheat and the other half before sowing of maize). Inorganic basal N fertilizers as urea of 200 kg N ha<sup>-1</sup> yr<sup>-1</sup> (165 kg N ha<sup>-1</sup> yr<sup>-1</sup> was used before 2009), P as superphosphate of 52.5 kg P<sub>2</sub>O<sub>5</sub> ha<sup>-1</sup> yr<sup>-1</sup>, and K as potassium sulfate of 37.5 kg K<sub>2</sub>O ha<sup>-1</sup> yr<sup>-1</sup> were applied in all treatments. Before 2009, all fertilizers were used as base fertilizer. From 2009, half of nitrogen

fertilizer was applied as base fertilizer, and the other half was applied as topdressing. Biochar and the base fertilizers were broadcast on the soil surface and incorporated into the soil by rotary tillage to depth of 15 cm before seeding.

### Soil sampling

Soil samples were collected during the winter wheat growing period (from October 2010 to June 2011) divided into five functional stages: (1) wheat post-seeding stage; (2) before freezing stage, (3) reviving stage; (4) shooting stage, and (5) harvest stage. Soil samples were collected at depths of 0–5, 5–10, 10–20, and 20–30 cm in each experimental plot. The soil samples were collected from five points randomly, and mixed into one sample, each mixed soil sample was divided into two parts. One part of the soil sample was determined for soil water content (SWC) and the other part was prepared for microbial analysis. All samples were immediately stored in sealed plastic bags in a cooler and transported to laboratory and stored in refrigerator at 4°C. All microbiological determinations were performed within one week of sampling.

### Measurement and monitoring

Microbial biomass carbon (MBC) and nitrogen (MBN) in soil were determined by fumigation extraction method [15,16], and the value of 0.45 was used for both the fraction of biomass C mineralized ( $K_C$ ) and the fraction of biomass N mineralized ( $K_N$ ). Soil samples were thoroughly mixed and ground to pass through a 2-mm sieve, and then the soil moisture was adjusted to about 40% water holding capacity. We fumigated 20.0 g (dry weight equivalent) of soil with ethanol-free chloroform for 24 h. Both fumigated and non-fumigated soils were extracted with 80 ml of 0.5 M K<sub>2</sub>SO<sub>4</sub> by shaking for 30 min on a reciprocating shaker at 40 cycles per minute and then filtered (soil:water = 1:4). The TOC analyzer (Multi N/C 2100, Jena, Germany) was used to determine the C and N in the extracts.

SWC was determined gravimetrically by oven-drying at 105°C for 48 h. Soil temperature at 5-cm depth in each replication was monitored hourly by a temperature probe (tolerance: ±0.2°C over the 0–70°C range; temperature measurement range: –50 to +70°C; model 109, Campbell Scientific, Logan, UT, USA) connected to a datalogger (model U12-006, Jimuduoli, Beijing, China) from 22 October 2010, except during harvesting and sowing (June 10–July 2) of each year.

### Data analyses

We used repeated measures ANOVA to test for main effects of treatment (between-subjects factor), soil depth (within-subjects factor) and date (within-subjects factor), and their interactive effects on MBC, MBN and microbial biomass C:N ratio. When necessary, data were log-transformed to reduce heteroscedasticity and improve assumptions of normality. We used Pearson's test to determine whether there was a significant correlation between microbial and environmental soil properties (moisture and temperature) and Fisher's least significant difference (LSD) test to determine the significant difference in coefficient of seasonal variability (CV) of MBC and MBN between different treatments. All statistical analyses were performed with JMP (version 4.0.4; SAS Institute, Cary, NC, USA).

## Results

### Microbial biomass C (MBC)

Variability of MBC under different rates of biochar and straw residue addition was large (Fig. 1). Treatment effects on MBC

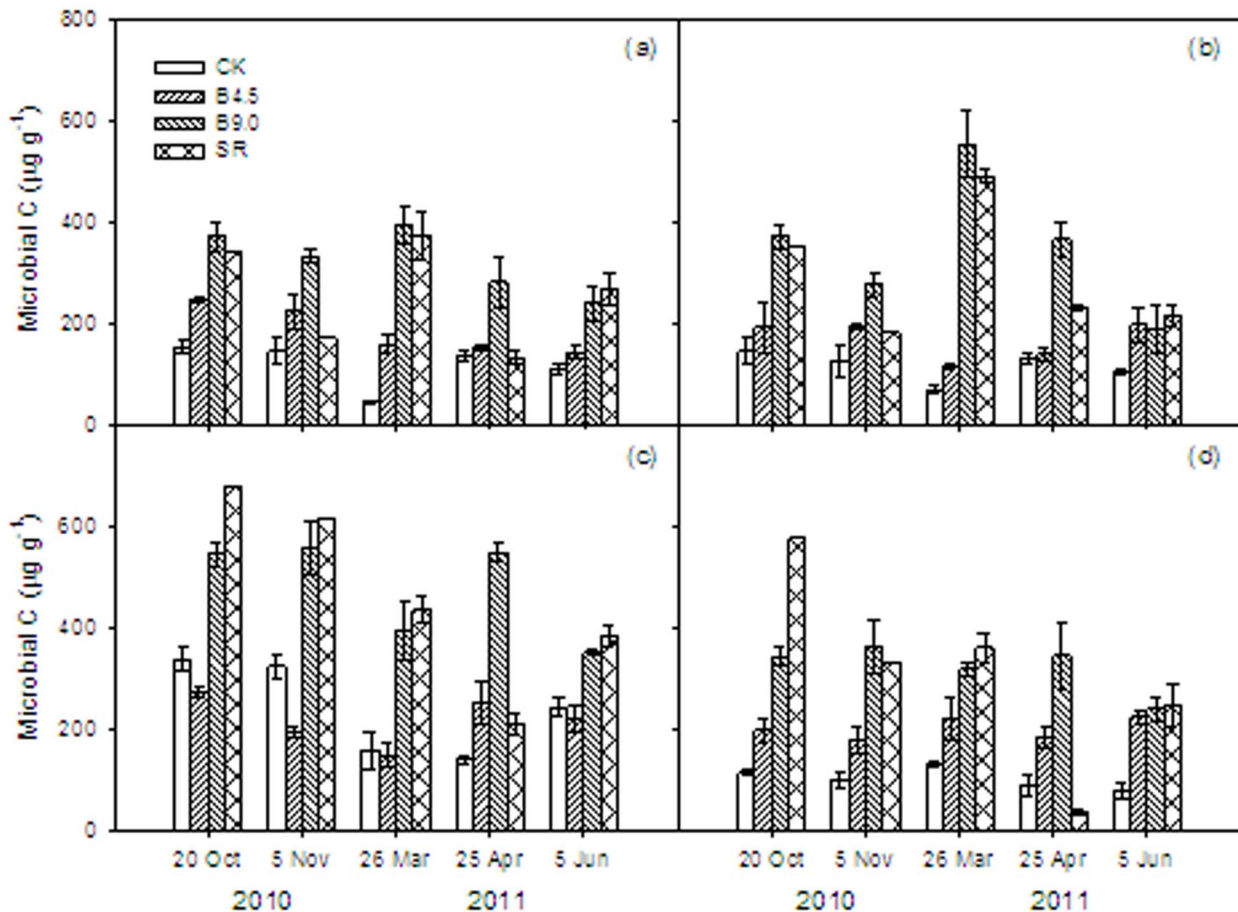
were significant (Table 1), and on average, largest in the B9.0 treatment, followed by the SR treatment, and lowest in CK. There were significant treatment\*date and treatment\*date\*depth interactive effects ( $P = 0.02$  and  $P < 0.0001$  respectively, Table 1). The greatest MBC was found at depth of 10–20 cm treated with SR on 20 October of 2010 (post-seeding stage), followed by the same treatment in 5 November of 2010 (before freezing stage) among all treatments and both soil layers during the whole experimental period. At depth of 0–5 and 5–10 cm, the MBC content in the treatments of B9.0 and SR in general showed the largest increases compared to CK. The MBC in the B9.0 treatment increased by 118% to 763%, while the MBC in the SR treatment was 2% lower to 722% higher compared to CK, depending on the time of year (Fig. 1a, b). The MBC at 0–5 and 5–10 cm in the B4.5 treatment also increased by 6% to 246%, depending on the time of year.

The MBC in the B9.0 treatment increased by 45% to 294% at soil depths of 10–20 and 20–30 cm compared to CK (Fig. 1c, d). The MBC in the SR treatment decreased by 62% during the shooting stage (25 April) at 20–30 cm soil depth, but showed some of the largest increases (between 50% and 408%) at other times at this depth. The MBC in the B4.5 treatment at 20–30 cm soil depth increased in most of the stages, but decreased at 10–20 cm soil depth by 19%, 40%, 6%, and 10% in the winter wheat post-seeding stage (20 October 2010), before freezing stage (5 November 2010), reviving stage (26 March 2011), and harvest stage (5 June 2011), respectively.

Table 2 presents the coefficients of seasonal variation of the MBC under different treatments. The CV of CK varied between 20% and 38%, and the overall CV was 25%. The overall CV of B4.5 and B9.0 treatments was 11% and 16%, respectively. The CVs were significantly smaller than that of CK. But the CV of SR treatment varied from 40% to 63%, which was significantly higher than that of CK. The CV of the surface soil tended to be higher than that of the subsoil in the same treatment, but not for the SR treatment.

### Microbial biomass N (MBN)

As with MBC, there was large variability in MBN among the different biochar and SR treatments, dates, and depths (Fig. 2, Table 1). However, unlike the MBC results, across date and depth the largest MBN was observed in the SR treatment (on average 35, 106, and 31% higher than the CK, B4.5 and B9.0 treatment respectively). The MBN in the B4.5 treatment decreased at most dates and soil depths, and across all dates compared to the CK treatment. Across date, the MBN in the B4.5 treatment decreased by 40, 47, 3, and 30% at 0–5, 5–10, 10–20, and 20–30 cm soil depth. The MBN in the B9.0 treatment often increased at 0–5, 5–10, and 20–30 cm soil depth during the stages of wheat post-seeding stage, before freezing stage, and reviving stage compared to the CK treatment. Large MBN pools were particularly observed in the SR treatment at 10–20 and 20–30 cm soil depth. At the



**Figure 1. Microbial biomass carbon (MBC) under different treatments (CK: control, B4.5:  $4.5 \text{ t ha}^{-1} \text{ yr}^{-1}$  biochar addition, B9.0:  $9.0 \text{ t ha}^{-1} \text{ yr}^{-1}$  biochar addition, SR: incorporation of wheat straw) and different soil depths (a: 0–5, b: 5–10, c: 10–20, and d: 20–30 cm) during winter wheat season.** Vertical bars represent the standard errors for means of each treatment ( $n = 3$ ). doi:10.1371/journal.pone.0102062.g001

**Table 1.** Repeated Measures ANOVA P values.

Variable	Microbial C	Microbial N	Microbial C:N
Treatm	0.0003	<0.0001	<0.0001
Date	<0.0001	<0.0001	0.002
Depth	<0.0001	0.0001	<0.0001
Treatm*date	0.02	<0.0001	0.0005
Treatm*depth	0.12	<0.0001	0.0004
Date*depth	<0.0001	0.0001	0.005
Treatm*date*depth	<0.0001	0.0003	0.0007

doi:10.1371/journal.pone.0102062.t001

shooting stage, the MBN of the four treatments were all relatively low.

The CV of MBN in the CK treatment varied from 24% to 44%, and the overall CV was 32% (Table 3). The overall CV of B4.5 was 19%, which was significantly lower than that of other treatments. The overall CV of B9.0 and SR treatments were 49% and 65% respectively, which were significantly larger than that of CK. From this, it can be seen that addition of 4.5 t ha<sup>-1</sup> of biochar decreased the temporal and spatial fluctuation of MBN, but that a higher biochar addition increased the fluctuation of MBN.

#### Microbial biomass C:N ratio

Variability in microbial biomass C:N ratio was large among the different treatments. We observed significant treatment effects on microbial biomass C:N ratio (Table 1, Fig. 3), with largest ratios in the B9.0 treatment (on average 181% greater than CK) and B4.5 treatment (on average 93% higher than CK), suggesting that the increase in MBC with biochar addition was larger compared to the increase in MBN. The greatest microbial biomass C:N ratio ratios were found at 10–20 cm and 20–30 cm soil depth in the B9.0 treatment.

## Discussion

#### Soil microbial biomass

The change in MBC reflects the process of microbial growth, death and organic matter degradation. Our results showed that MBC increased with biochar amendment compared to CK, which suggested that microbial growth could be accelerated by biochar addition. Reported biochar effects on soil MBC are quite inconsistent. Several studies found that there was no significant effect of biochar amendment on soil MBC [8,11]. Dempster et al. [12] found that MBC significantly decreased with biochar addition while MBN was unaltered in a coarse textured soil, and others

observed the same positive effects of biochar addition on microbial biomass as ours [1,17–19]. Moreover, a positive linear relationship between microbial biomass and biochar concentration was also observed in a highly weathered soil [20]. Biochar type was thought as the driving parameter for any effects on soil microbial biomass, community, and activity [9,21].

Compared to wheat straw residue return, after 4 years of annual application, biochar increased MBC in 0–30 cm soil when applied at a high rate (9.0 t ha<sup>-1</sup> yr<sup>-1</sup>,  $p < 0.05$ ), but decreased MBC when applied at a low rate (4.5 t ha<sup>-1</sup> yr<sup>-1</sup>,  $p < 0.01$ ). The amount of C added in the B4.5 treatment most likely did not induce a similar increase in MBC as in the SR treatment, while the amount of C added in the B9.0 treatment did.

The MBN at 0–30 cm soil depth significantly decreased in the B4.5 treatment, but increased in the B9.0 treatment compared to CK ( $p < 0.01$ ), whereas the MBN at 0–30 cm soil depth in both biochar treatments were lower compared to SR treatment ( $p < 0.05$ ). Zavalloni et al. [8] found that biochar amendment at a rate of 5% had no significant influence on soil MBN in an incubation experiment. The increase in MBC and the decrease in MBN for biochar treatments indicate that biochar in soil acted as a carbon source rather than a nitrogen source for soil microbes. In return, this could have consequences for N cycling (e.g., increased microbial N immobilization with biochar addition). Our previous study in the field showed that biochar addition decreased soil available N by 7–10% compared to CK ( $p > 0.05$ ), but increased total N by 14–21% ( $p < 0.05$ ) in the 0–15 cm soil [22].

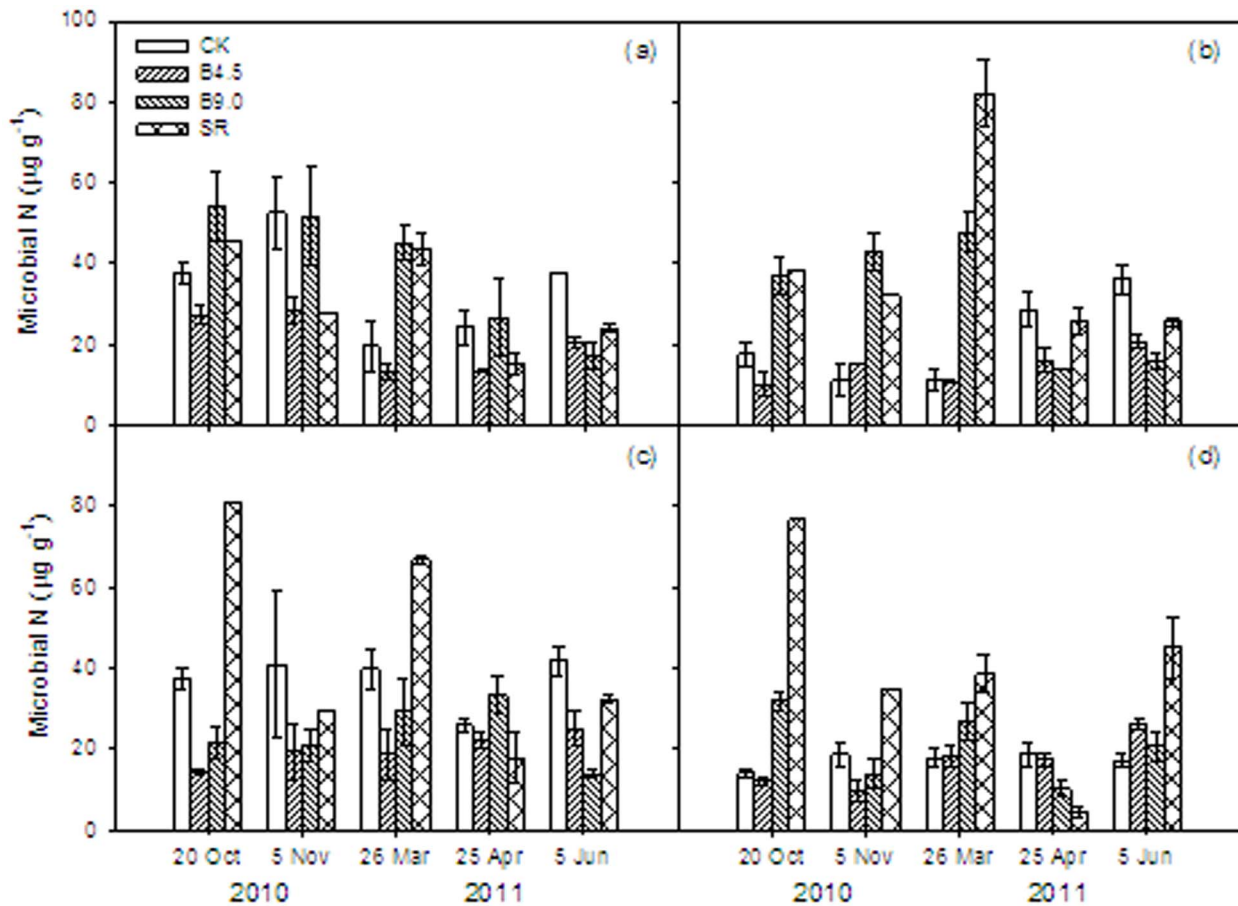
In the relatively unfertile and coarse-textured soil of our study, microbial biomass was probably limited by both a suitable growth environment and by C availability [17]. The labile fraction of biochar has been shown to stimulate microbial activity and abundance in some cases. Sorption of comparatively polar organic matter and nutrients could support energy for microorganisms, while macro- and micropores of biochar, which hold air and water, likely support microorganisms' livable habitat [1]. Our results

**Table 2.** Coefficients of seasonal variation of MBC under different treatments (%).

Treatment	0–5 cm	5–10 cm	10–20 cm	20–30 cm	0–30 cm
CK	37.0ab	25.4ab	38.1ab	20.3b	25.0b
B4.5	25.7bc	22.9b	22.6bc	10.4c	11.2c
B9.0	19.4c	34.2ab	20.5c	15.3b	15.6c
SR	40.6ab	43.1a	40.4a	63.3a	41.6a

Note: Different small letters indicate significant differences among treatments (CK: control, B4.5: 4.5 t ha<sup>-1</sup> yr<sup>-1</sup> biochar addition, B9.0: 9.0 t ha<sup>-1</sup> yr<sup>-1</sup> biochar addition, SR: incorporation of wheat straw) at the  $P < 0.05$  level (L.S.D.).

doi:10.1371/journal.pone.0102062.t002



**Figure 2. Microbial biomass nitrogen (MBN) under different treatments (CK: control, B4.5: 4.5 t ha<sup>-1</sup> yr<sup>-1</sup> biochar addition, B9.0: 9.0 t ha<sup>-1</sup> yr<sup>-1</sup> biochar addition, SR: incorporation of wheat straw) and different soil depths (a: 0–5, b: 5–10, c: 10–20, and d: 20–30 cm) during winter wheat season.** Vertical bars represent the standard errors for means of each treatment ( $n=3$ ). doi:10.1371/journal.pone.0102062.g002

suggest that biochar supplied livable habitat for microorganisms stimulating microorganisms which can use the carbon source from the labile fraction of biochar.

### Soil microbial biomass C:N

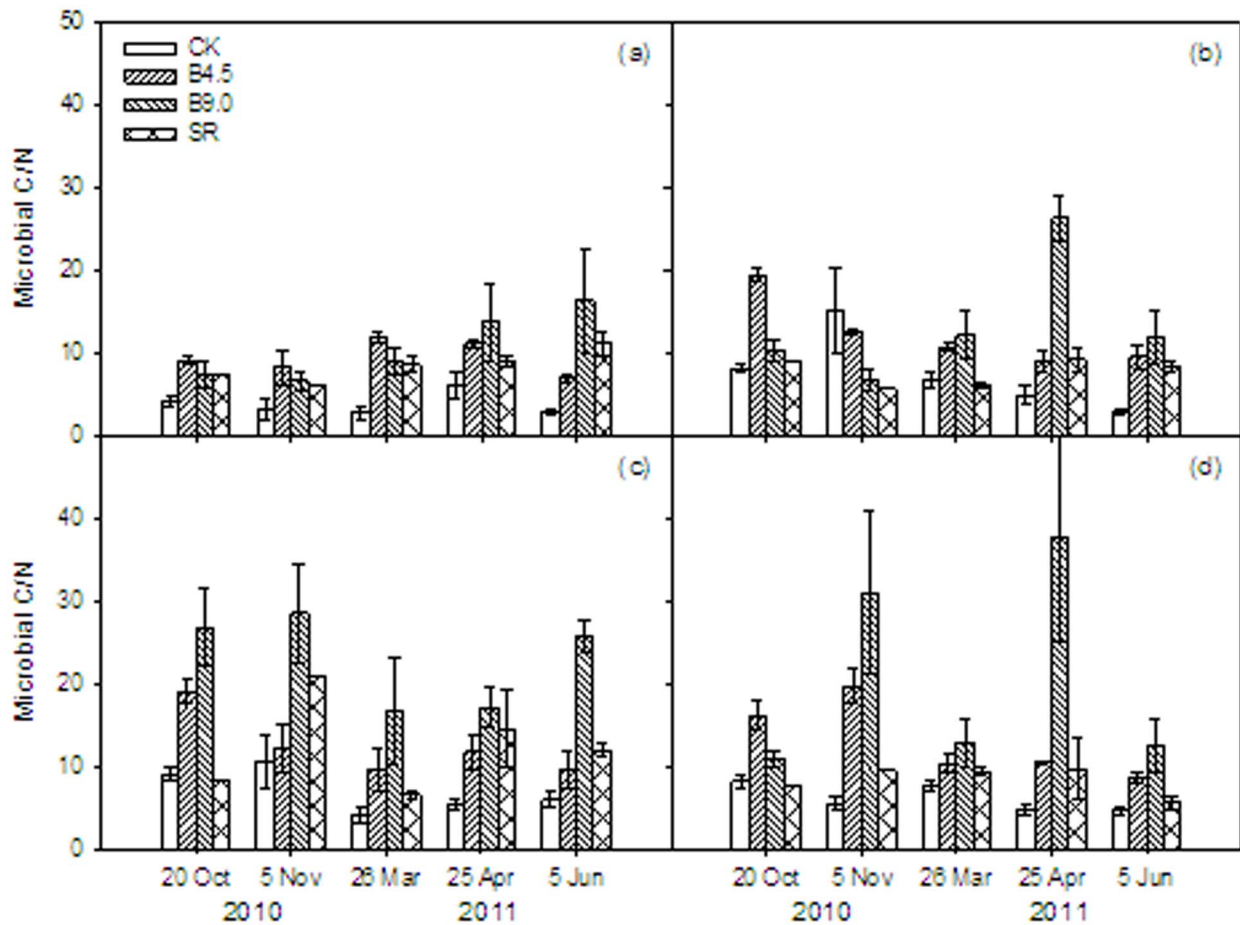
Changes in the microbial biomass C:N ratio can reflect changes in the relative availability of C and N to microbes, but could also reflect changes in the microbial community structure. In our study, the microbial biomass C:N ratio significantly increased with increasing biochar application and the microbial biomass C:N ratio more than doubled in the B9.0 treatment compared to the control (Fig. 3). A pot experiment showed that there was no

significant effect on the microbial biomass C:N ratio of biochar addition at a rate of 25 t ha<sup>-1</sup> [12]. Nicolardot et al. [23] determined that there was a significantly positive correlation between soil microbial biomass C:N ratio and the C:N ratio of the added organic matter. In contrast, Kushwaha et al. [24] reported a decrease in microbial biomass C:N ratio after straw return, while Kallenbach and Grandy [25] found no effect on microbial biomass C:N ratio after application of organic carbon, suggesting that changes in microbial biomass C:N ratio cannot solely be explained by organic amendments with relatively high C content. Several studies observed a change in soil microbial structure and abundance with biochar application [1]. In our study the

**Table 3. Coefficients of seasonal variation of MBN under different treatments (%).**

Treatment	0–5 cm	5–10 cm	10–20 cm	20–30 cm	0–30 cm
CK	38.1ab	43.6ab	23.7b	31.4a	31.7b
B4.5	34.9b	23.9b	6.9c	34.9c	18.6c
B9.0	49.5a	52.5a	43.7ab	58.8b	49.1ab
SR	42.0ab	55.3a	66.9a	93.6a	65.4a

Note: Different small letters indicate significant differences among treatments (CK: control, B4.5: 4.5 t ha<sup>-1</sup> yr<sup>-1</sup> biochar addition, B9.0: 9.0 t ha<sup>-1</sup> yr<sup>-1</sup> biochar addition, SR: incorporation of wheat straw) at the  $P<0.05$  level (L.S.D.). doi:10.1371/journal.pone.0102062.t003



**Figure 3. The ratio of soil microbial biomass carbon (MBC) to soil microbial biomass nitrogen (MBC/MBN) under different treatments (CK: control, B4.5: 4.5 t ha<sup>-1</sup> yr<sup>-1</sup> biochar addition, B9.0: 9.0 t ha<sup>-1</sup> yr<sup>-1</sup> biochar addition, SR: incorporation of wheat straw) and different soil depths (a: 0–5, b: 5–10, c: 10–20, and d: 20–30 cm) during winter wheat season. Vertical bars represent the standard errors for means of each treatment ( $n=3$ ).**

doi:10.1371/journal.pone.0102062.g003

increased microbial C:N ratio with biochar suggests increased microbial N limitation, while it is unclear if the increased microbial C:N ratio was also due to changes in microbial community structure. Moreover, biochar application may alter the release of MBN or the fraction of biomass N mineralized ( $K_N$ ). The value of  $K_N$  had a wide range from 0.28–0.81 [26–28], and it was difficult to be measured precisely. The high values of microbial C:N ratio for biochar treatments especially at 10–20 and 20–30 cm soil depths might be due to the same value of  $K_N$  used for all treatments herein. It is worthy of further study on the effect of biochar on the fraction of biomass N mineralized in the fumigation-extraction method.

#### Relationship between MBC and environmental factors

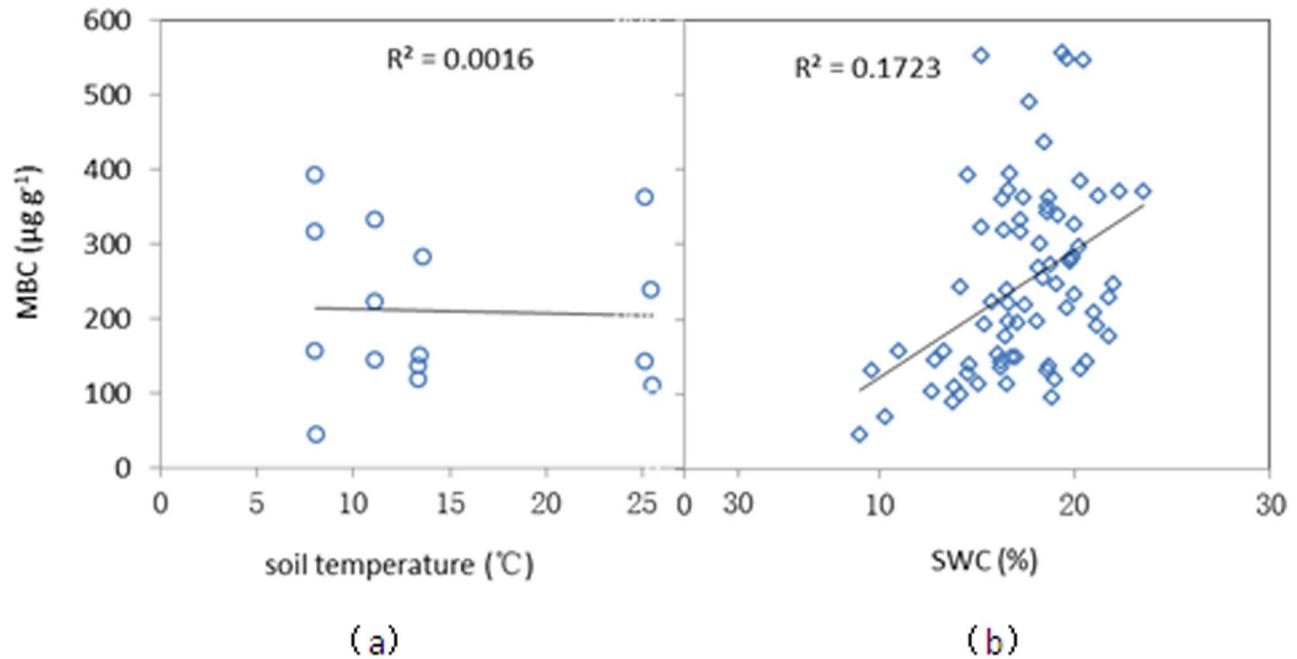
Data analysis showed that there was a significant positive correlation between SWC and MBC (Fig. 4,  $R^2=0.172$ ,  $P<0.001$ ). The positive relationship between SWC and MBC suggests that SWC may have limited microbial activity at the experimental site. Biochar addition can increase soil water content [29,30]. Therefore, biochar application could influence soil microbial biomass via variation in soil water content.

However, the increases in MBC with biochar addition did not always coincide with an increase in SWC. For instance, MBC increased sharply in the reviving stage (March 2011) in the B9.0

treatment while SWC did not. Moreover, our study showed that biochar application showed a limited effect on soil water content [13,14], which also did not coincide with the higher MBC in the biochar treatments than in the CK treatment.

There was no significant correlation between MBC and soil temperature, and our result was supported by other studies [31,32]. For instance, Contin et al. [32] found that MBC did not change significantly at different incubation temperatures in arable and grassland soils. But we should point out that the spike in MBC at 5–10 cm depth of soil on March 26 may be related to the soil temperature increase that occurred during the same time.

The response of microbial biomass to seasonal changes is important in regulating microbial turnover, which may in turn influence nutrient availability and ultimately plant nutrition [33]. Seasonal fluctuations in MBC in the biochar treatments were smaller than in the CK and SR treatments (Table 2), whereas, seasonal fluctuations in MBN showed no obvious differences among the CK, B9.0 and SR treatments, and only the seasonal fluctuations in the B4.5 treatment was lower than in the other treatments. Biochar may have reduced extreme environmental conditions for microbial growth, which could have important implications for C and N dynamics, and crop yield [34,35].



**Figure 4. The correlations between soil microbial biomass carbon (MBC) and soil temperature (a), and between MBC and soil water content (SWC, b).**

doi:10.1371/journal.pone.0102062.g004

## Conclusion

After 4 consecutive years of application, biochar increased soil MBC significantly compared to CK. The biochar application at a rate of  $9.0 \text{ t ha}^{-1} \text{ yr}^{-1}$  reached and even exceeded the effect of wheat residue return, whereas smaller differences in soil MBN were found among treatments. Soil MBC for biochar treatments showed less seasonal fluctuation compared to CK and SR treatments, suggesting that biochar provided a more suitable habitat for soil microorganisms. Biochar treatment showed the highest value of soil microbial biomass C:N ratio, and one possible reason might be that biochar could decrease the fraction of biomass N mineralized.

## References

- Lehmann J, Rillig MC, Thies J, Masiello CA, Hockaday WC, et al. (2011) Biochar effects on soil biota – A review. *Soil Biology and Biochemistry* 43: 1812–1836.
- Lehmann J (2007) A handful of carbon. *Nature* 447: 143–144.
- Zimmerman AR, Gao B, Ahn M-Y (2011) Positive and negative carbon mineralization priming effects among a variety of biochar-amended soils. *Soil Biology and Biochemistry* 43: 1169–1179.
- Luo Y, Durenkamp M, De Nobili M, Lin Q, Brookes PC (2011) Short term soil priming effects and the mineralisation of biochar following its incorporation to soils of different pH. *Soil Biology and Biochemistry* 43: 2304–2314.
- Cross A, Sohi SP (2011) The priming potential of biochar products in relation to labile carbon contents and soil organic matter status. *Soil Biology and Biochemistry* 43: 2127–2134.
- Keith A, Singh B, Singh BP (2011) Interactive priming of biochar and labile organic matter mineralization in a smectite-rich soil. *Environmental Science & Technology* 45: 9611–9618.
- Thiessen S, Gleixner G, Wutzler T, Reichstein M (2013) Both priming and temperature sensitivity of soil organic matter decomposition depend on microbial biomass – An incubation study. *Soil Biology & Biochemistry* 57: 739–748.
- Zavalloni C, Alberti G, Biasiol S, Vedove GD, Fornasier F, et al. (2011) Microbial mineralization of biochar and wheat straw mixture in soil: A short-term study. *Applied Soil Ecology* 50: 45–51.
- Steinbeiss S, Gleixner G, Antonietti M (2009) Effect of biochar amendment on soil carbon balance and soil microbial activity. *Soil Biology and Biochemistry* 41: 1301–1310.
- Luo Y, Durenkamp M, De Nobili M, Lin Q, Devonshire BJ, et al. (2013) Microbial biomass growth, following incorporation of biochars produced at  $350^{\circ}\text{C}$  or  $700^{\circ}\text{C}$ , in a silty-clay loam soil of high and low pH. *Soil Biology and Biochemistry* 57: 513–523.
- Castaldi S, Riondino M, Baronti S, Esposito FR, Marzaioli R, et al. (2011) Impact of biochar application to a Mediterranean wheat crop on soil microbial activity and greenhouse gas fluxes. *Chemosphere* 85: 1464–1471.
- Dempster DN, Gleeson DB, Solaiman ZM, Jones DL, Murphy DV (2012) Decreased soil microbial biomass and nitrogen mineralisation with Eucalyptus biochar addition to a coarse textured soil. *Plant and Soil* 354: 311–324.
- Zhang QZ, Wang XH, Du ZL, Liu XR, Wang YD (2013) Impact of biochar on nitrate accumulation in an alkaline soil. *Soil Research* 51: 521–528.
- Zhang QZ, Wang YD, Wu YF, Wang XH, Du ZL, et al. (2013) Effects of biochar amendment on soil thermal conductivity, reflectance, and temperature. *soil Science Society of America Journal* 77: 1478–1487.
- Brookes PC, Landman A, Pruden G, Jenkinson DS (1985) Chloroform fumigation and the release of soil nitrogen: A rapid direct extraction method to measure microbial biomass nitrogen in soil. *Soil Biology and Biochemistry* 17: 837–842.
- Wu J, Joergensen RG, Pommerening B, Chaussod R, Brookes PC (1990) Measurement of soil microbial biomass C by fumigation-extraction—an automated procedure. *Soil Biology and Biochemistry* 22: 1167–1169.
- Kolb SE, Fermanich KJ, Dornbush ME (2008) Effect of charcoal quantity on microbial biomass and activity in temperate soils. *Soil Science Society of America Journal* 73: 1173–1181.

## Acknowledgments

This work was supported by the S&T Innovation Program of Chinese Academy of Agricultural Sciences.

## Author Contributions

Conceived and designed the experiments: QZZ. Performed the experiments: JH NL QZZ. Analyzed the data: QZZ FAD XRL YDW. Contributed reagents/materials/analysis tools: QZZ FAD YDW XRL. Contributed to the writing of the manuscript: QZZ FAD XRL.

18. O'Neill B, Grossman J, Tsai MT, Gomes JE, Lehmann J, et al. (2009) Bacterial community composition in Brazilian Anthrosols and adjacent soils characterized using culturing and molecular identification. *Microbial Ecology* 58: 23–35.
19. Liang B, Lehmann J, Sohi SP, Thies JE, O'Neill B, et al. (2010) Black carbon affects the cycling of non-black carbon in soil. *Organic Geochemistry* 41: 206–213.
20. Steiner C, Das KC, Garcia M, Förster B, Zech W (2008) Charcoal and smoke extract stimulate the soil microbial community in a highly weathered xanthic Ferralsol. *Pedobiologia* 51: 359–366.
21. Lehmann J, Joseph S (2009) Biochar for Environmental Management: An Introduction. In: Lehmann J, Joseph S, editors. *Biochar for Environmental Management: Science and Technology*. London: Earthscan. pp. 1–12.
22. Guo W, Chen HX, Zhang QZ, Wang YD (2011) Effects of biochar application on total nitrogen and alkali-hydrolyzable nitrogen content in the topsoil of the high-yield cropland in north China Plain. *Ecology and Environmental Sciences* 20: 425–428.
23. Nicolardot B, Recous S, Mary B (2001) Simulation of C and N mineralisation during crop residue decomposition: a simple dynamic model based on the C: N ratio of the residues. *Plant and Soil* 228: 83–103.
24. Kushwaha CP, Tripathi SK, Singh KP (2000) Variations in soil microbial biomass and N availability due to residue and tillage management in a dryland rice agroecosystem. *Soil and Tillage Research* 56: 153–166.
25. Kallenbach C, Grandy AS (2011) Controls over soil microbial biomass responses to carbon amendments in agricultural systems: A meta-analysis. *Agriculture, Ecosystems and Environment* 144: 241–252.
26. Joergensen RG (1996) The fumigation-extraction method to estimate soil microbial biomass: Calibration of the kEC value. *Soil Biology and Biochemistry* 28: 25–31.
27. Greenfield LG (1995) Release of microbial cell N during chloroform fumigation. *Soil Biology and Biochemistry* 27: 1235–1236.
28. Sparling G, Zhu C (1993) Evaluation and calibration of biochemical methods to measure microbial biomass C and N in soils from western australia. *Soil Biology and Biochemistry* 25: 1793–1801.
29. Chen Y, Shinogi Y, Taira M (2010) Influence of biochar use on sugarcane growth, soil parameters, and groundwater quality. *Australian Journal of Soil Research* 48: 526–530.
30. Piccolo A, Pietramellara G, Mbagwu JSC (1996) Effects of coal derived humic substances on water retention and structural stability of Mediterranean soils. *Soil Use and Management* 12: 209–213.
31. Joergensen RG, Brookes PC, Jenkinson DS (1990) Survival of the soil microbial biomass at elevated temperatures. *Soil Biology and Biochemistry* 22: 1129–1136.
32. Contin M, Corcimaru S, De Nobili M, Brookes PC (2000) Temperature changes and the ATP concentration of the soil microbial biomass. *Soil Biology and Biochemistry* 32: 1219–1225.
33. Wardle DA (1992) A comparative assessment of factors which influence microbial biomass carbon and nitrogen levels in soil. *Biological Reviews of the Cambridge Philosophical Society* 67: 321–358.
34. Kumar K, Goh KM (1999) Crop residues and management practices: effects of soil quality, soil nitrogen dynamics, crop yield, and nitrogen recovery. *Advances In Agronomy* 68: 197–319.
35. Lou Y, Li Z, Zhang T, Liang Y (2004) CO<sub>2</sub> emissions from subtropical arable soils of China. *Soil Biology & Biochemistry* 36: 1835–1842.