

Correction

Correction: Motion-Induced Blindness and Troxler Fading: Common and Different Mechanisms

**The PLOS ONE Staff**

There are several errors in Figures 2 and 3 and their respective figure legends. Please see the corrected figures and their legends below.

Citation: The PLOS ONE Staff (2014) Correction: Motion-Induced Blindness and Troxler Fading: Common and Different Mechanisms. PLoS ONE 9(6): e101913. doi:10.1371/journal.pone.0101913

Published: June 27, 2014

Copyright: © 2014 The PLOS ONE Staff. This is an open-access article distributed under the terms of the Creative Commons Attribution License, which permits unrestricted use, distribution, and reproduction in any medium, provided the original author and source are credited.

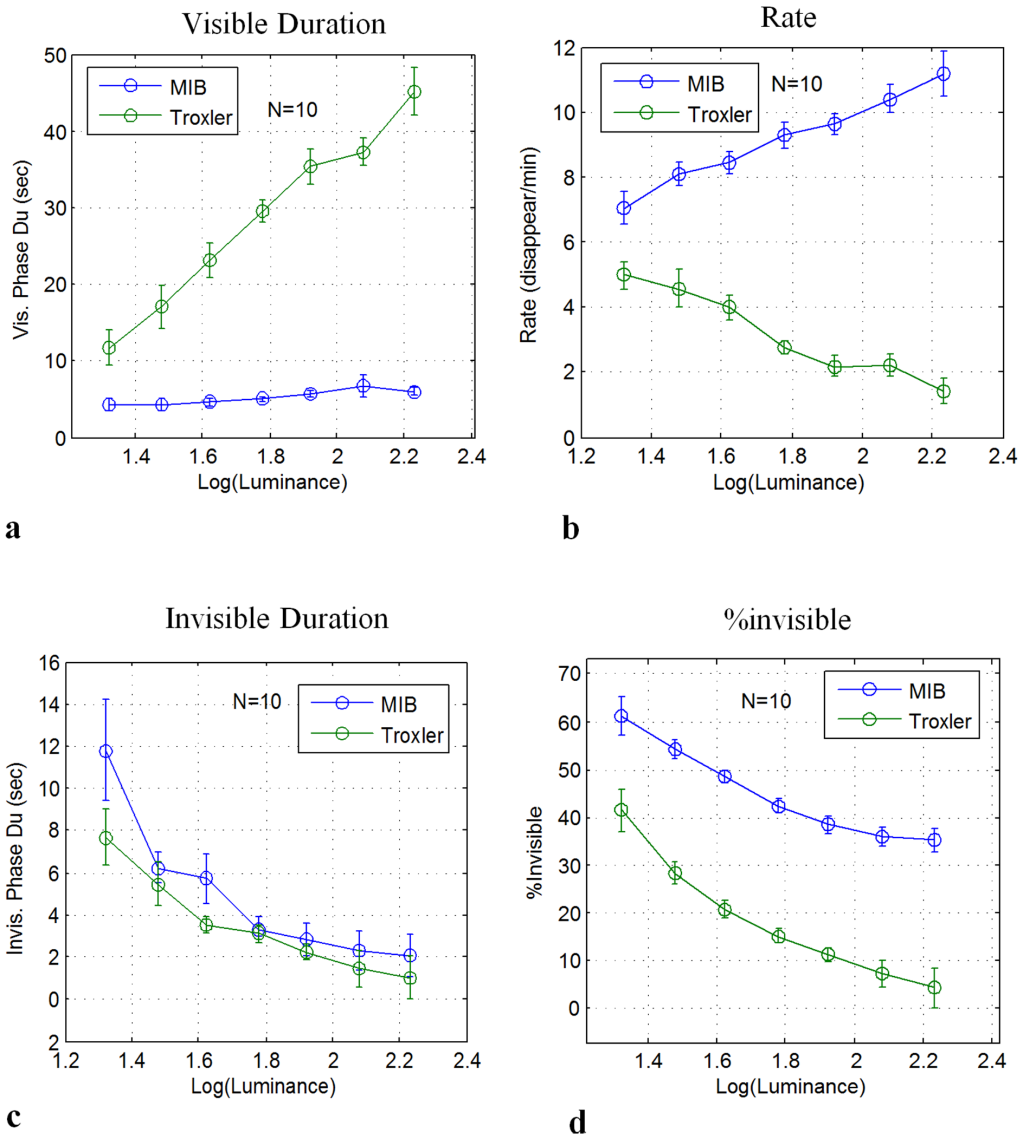


Figure 2. MIB and Troxler disappearance as a function of contrast (10 observers). (a) Mean visible periods. (b) Transition Rate (disappearance events per min). (c) Mean invisible periods. (d) Percentage of time invisible. Data were normalized individually for each observer before averaging across observers and adding the grand-average baseline (see Methods). Error bars denote SEM. doi:10.1371/journal.pone.0092894.g002

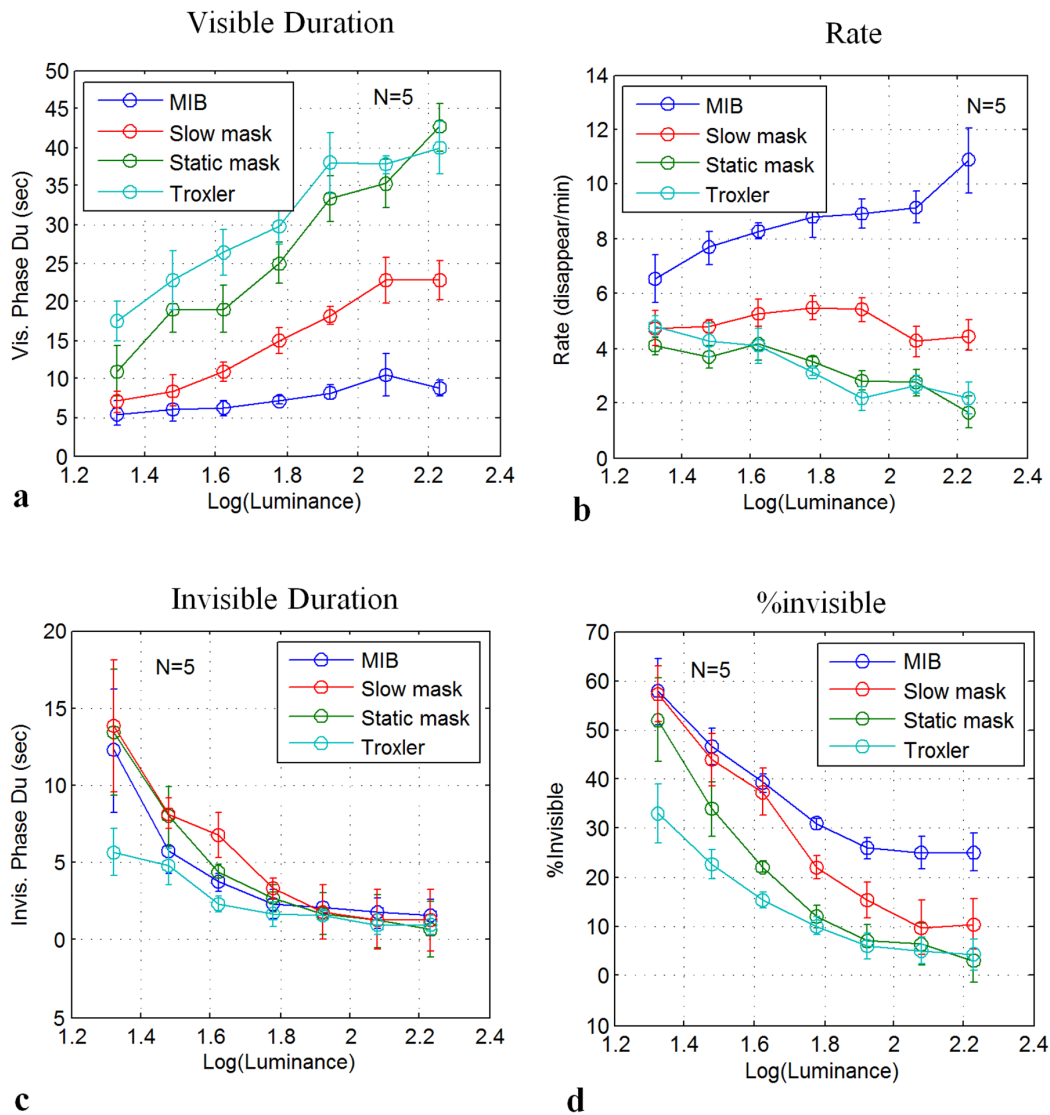


Figure 3. Disappearance as a function of contrast for Troxler (no mask), static mask, slow mask, and fast mask (5 observers). (a) Mean visible periods. (b) Transition Rate (disappearance events per min). (c) Mean invisible period. (d) Percentage of time invisible. Data were normalized individually for each observer before averaging across observers and adding the grand-average baseline (see Methods). Error bars denote SEM.
doi:10.1371/journal.pone.0092894.g004

Reference

1. Bonneh YS, Donner TH, Cooperman A, Heeger DJ, Sagi D (2014) Motion-Induced Blindness and Troxler Fading: Common and Different Mechanisms. PLoS ONE 9(3): e92894. doi:10.1371/journal.pone.0092894.