



# Mitochondrial Calcium Uniporter MCU Supports Cytoplasmic $\text{Ca}^{2+}$ Oscillations, Store-Operated $\text{Ca}^{2+}$ Entry and $\text{Ca}^{2+}$ -Dependent Gene Expression in Response to Receptor Stimulation

Krishna Samanta, Sophie Douglas, Anant B. Parekh\*

Department of Physiology, Anatomy and Genetics, University of Oxford, Oxford, United Kingdom

## Abstract

$\text{Ca}^{2+}$  flux into mitochondria is an important regulator of cytoplasmic  $\text{Ca}^{2+}$  signals, energy production and cell death pathways.  $\text{Ca}^{2+}$  uptake can occur through the recently discovered mitochondrial uniporter channel (MCU) but whether the MCU is involved in shaping  $\text{Ca}^{2+}$  signals and downstream responses to physiological levels of receptor stimulation is unknown. Here, we show that modest stimulation of leukotriene receptors with the pro-inflammatory signal  $\text{LTC}_4$  evokes a series of cytoplasmic  $\text{Ca}^{2+}$  oscillations that are rapidly and faithfully propagated into mitochondrial matrix. Knockdown of MCU or mitochondrial depolarisation, to reduce the driving force for  $\text{Ca}^{2+}$  entry into the matrix, prevents the mitochondrial  $\text{Ca}^{2+}$  rise and accelerates run down of the oscillations. The loss of cytoplasmic  $\text{Ca}^{2+}$  oscillations appeared to be a consequence of enhanced  $\text{Ca}^{2+}$ -dependent inactivation of  $\text{InsP}_3$  receptors, which arose from the loss of mitochondrial  $\text{Ca}^{2+}$  buffering.  $\text{Ca}^{2+}$  dependent gene expression in response to leukotriene receptor activation was suppressed following knockdown of the MCU. In addition to buffering  $\text{Ca}^{2+}$  release, mitochondria also sequestered  $\text{Ca}^{2+}$  entry through store-operated  $\text{Ca}^{2+}$  channels and this too was prevented following loss of MCU. MCU is therefore an important regulator of physiological pulses of cytoplasmic  $\text{Ca}^{2+}$ .

**Citation:** Samanta K, Douglas S, Parekh AB (2014) Mitochondrial Calcium Uniporter MCU Supports Cytoplasmic  $\text{Ca}^{2+}$  Oscillations, Store-Operated  $\text{Ca}^{2+}$  Entry and  $\text{Ca}^{2+}$ -Dependent Gene Expression in Response to Receptor Stimulation. PLoS ONE 9(7): e101188. doi:10.1371/journal.pone.0101188

**Editor:** Kevin Currie, Vanderbilt University Medical Center, United States of America

**Received:** May 6, 2014; **Accepted:** June 4, 2014; **Published:** July 8, 2014

**Copyright:** © 2014 Samanta et al. This is an open-access article distributed under the terms of the Creative Commons Attribution License, which permits unrestricted use, distribution, and reproduction in any medium, provided the original author and source are credited.

**Data Availability:** The authors confirm that all data underlying the findings are fully available without restriction. All relevant data are within the paper and its Supporting Information files.

**Funding:** This work received funding from the Medical Research Council and the American Asthma Foundation. The funders had no role in study design, data collection and analysis, decision to publish, or preparation of the manuscript.

**Competing Interests:** The authors have declared that no competing interests exist.

\* Email: anant.parekh@dpag.ox.ac.uk

## Introduction

Mitochondrial  $\text{Ca}^{2+}$  import plays a fundamental role in cell physiology through shaping the spatial and temporal profile of intracellular  $\text{Ca}^{2+}$  signals, stimulating ATP production and regulating cell survival [1,2]. The outer mitochondrial membrane is freely permeable to  $\text{Ca}^{2+}$  but the inner membrane is not.  $\text{Ca}^{2+}$  uptake across the latter is accomplished through the mitochondrial  $\text{Ca}^{2+}$  uniporter (MCU). Although this transporter has been known to exist for several decades, only recently has it been identified at a molecular level. MCU comprises a membrane-spanning 40 kDa protein that forms a low conductance  $\text{Ca}^{2+}$ -selective channel pore [3,4,5]. Important regulators of MCU activity have been discovered including MICU1 [6] and MICU2 [7], MCUR1 [8] and EMRE [9].  $\text{Ca}^{2+}$  transporters that extrude  $\text{Ca}^{2+}$  from the matrix have also been characterised recently, including the mitochondrial  $\text{Na}^+$ - $\text{Ca}^{2+}$  exchanger [10] and Letm1 [11], a  $\text{Ca}^{2+}$ - $\text{H}^+$  exchanger.

$\text{Ca}^{2+}$  uptake by MCU is determined by both the large voltage across the inner membrane that results from proton pumping by the respiratory chain, and the  $\text{Ca}^{2+}$  concentration gradient between the cytoplasm and matrix [12,13]. Knockdown of

MCU using siRNA-based strategies significantly reduced the rise in mitochondrial matrix  $\text{Ca}^{2+}$  that followed a cytoplasmic  $\text{Ca}^{2+}$  increase [3,4]. However, these previous investigations on MCU have tended to use high non-physiological concentrations of agonist, raising the question whether MCU contributes to physiological levels of  $\text{Ca}^{2+}$  signalling.

Stimulation of cell-surface receptors that couple to phospholipase C generates the second messengers  $\text{InsP}_3$  and diacylglycerol [14]. Modest levels of receptor activation, which are thought to mirror physiological levels of receptor occupancy, result in repetitive cytoplasmic  $\text{Ca}^{2+}$  oscillations that arise from regenerative  $\text{Ca}^{2+}$  release from  $\text{InsP}_3$ -sensitive  $\text{Ca}^{2+}$  stores followed by  $\text{Ca}^{2+}$  entry through store-operated  $\text{Ca}^{2+}$  release-activated  $\text{Ca}^{2+}$  (CRAC) channels, which refills the stores in readiness for the next oscillatory cycle. Information is encoded in the amplitude, frequency and spatial profile of the oscillation [15]. In mast cells, activation of cysteinyl leukotriene type I (cysLT1) receptors with the physiological agonist leukotriene  $\text{C}_4$  evokes a series of  $\text{Ca}^{2+}$  oscillations [16] and local  $\text{Ca}^{2+}$  entry through CRAC channels during the oscillatory responses activates the transcription factors NFAT [17] and c-fos [16], which interact to regulate expression of

chemokines and cytokines that shape the subsequent local inflammatory response.

In this study, we have investigated whether MCU regulates the pattern of oscillatory  $\text{Ca}^{2+}$  signals and subsequent activation of gene expression following cysLT1 receptor stimulation. We find that MCU is essential for supporting these responses, reinforcing its role as a key regulator of physiological  $\text{Ca}^{2+}$  signals. We also find that MCU, by buffering  $\text{Ca}^{2+}$  influx, is important for sustaining CRAC channel activity.

## Results

### $\text{Ca}^{2+}$ oscillations run down rapidly after MCU knockdown

Stimulation of native receptors in the mast cell line RBL-1 with a submaximal concentration (160 nM) of LTC<sub>4</sub> evoked a series of cytoplasmic  $\text{Ca}^{2+}$  oscillations (Figure 1A) that decreased gradually in number (Figure 1D) and size (Figure 1E) due to receptor desensitization [18]. Knockdown of MCU significantly altered the pattern of response.  $\text{Ca}^{2+}$  oscillations now ran down very quickly (Figure 1B), disappearing within 300 seconds (Figure 1D). The amplitude of each spike following MCU knockdown also declined markedly (Figure 1E). Similar results were obtained when mitochondria were depolarised with FCCP (5  $\mu\text{M}$ ), a protonophore that collapses the mitochondrial potential and thereby reduces the electrical gradient for  $\text{Ca}^{2+}$  uptake via the MCU. In the presence of FCCP,  $\text{Ca}^{2+}$  oscillations ran down rapidly (Figure 1C), and at a rate and extent similar to that seen after knockdown of MCU (Figure 1D, E).

### Mitochondrial depolarisation correlates with run down of $\text{Ca}^{2+}$ oscillations

To see whether mitochondrial depolarisation correlated with run down of the  $\text{Ca}^{2+}$  oscillations, we compared the effects of FCCP on both mitochondrial membrane potential and the number of  $\text{Ca}^{2+}$  oscillations that were produced over a 600 seconds recording period. Increasing the concentration of FCCP led to a progressive depolarisation of the mitochondrial membrane potential, measured with TMRE (Figure 2A, B), as well as a decrease in number of  $\text{Ca}^{2+}$  oscillations (Figure 2C-F). Dose-response curves showing the effects of different concentrations of FCCP on mitochondrial potential and oscillatory number are compared in Figure 2B. Both responses were graded with the concentration of FCCP and showed similar dose-dependencies.

### Mitochondrial matrix $\text{Ca}^{2+}$ oscillates in response to physiological stimulation

If mitochondria buffer physiological pulses of cytoplasmic  $\text{Ca}^{2+}$  through MCU, then matrix  $\text{Ca}^{2+}$  should rise following challenge with LTC<sub>4</sub> in an MCU-dependent manner. To test this, we measured mitochondrial  $\text{Ca}^{2+}$  by expressing the genetically encoded ratiometric pericam that targets to the mitochondrial matrix [19,20]. Stimulation with LTC<sub>4</sub> elicited a series of repetitive  $\text{Ca}^{2+}$  oscillations in matrix  $\text{Ca}^{2+}$  (Figure 3A) that closely mimicked the cytoplasmic  $\text{Ca}^{2+}$  oscillations in number and frequency (Figures 3B and 3C; Figure 1). Targeted ratiometric pericam measured mitochondrial  $\text{Ca}^{2+}$  because the matrix  $\text{Ca}^{2+}$  rise to LTC<sub>4</sub> was suppressed by pre-treatment with FCCP (Figure 3D, 3F). Knockdown of MCU suppressed the rise in mitochondrial  $\text{Ca}^{2+}$  following cysLT1 receptor activation (Figure 3E, F). After MCU knockdown, the initial  $\text{Ca}^{2+}$  rise was significantly reduced (Figure 3F) and no cell (76/76 cells) showed any subsequent rise in matrix  $\text{Ca}^{2+}$  following the small initial response.

Ratiometric pericam is sensitive to pH at excitation wavelengths close to 480 nm [19] and we were concerned that the mitochondrial fluorescent signals reflected changes in matrix pH rather than matrix  $\text{Ca}^{2+}$ . Pericam is only weakly sensitive to pH over the wavelengths 415–430 nm. Stimulation with LTC<sub>4</sub> still evoked oscillatory changes at 430 nm, demonstrating that the pericam was indeed measuring matrix  $\text{Ca}^{2+}$  under our conditions (Figure 3G).

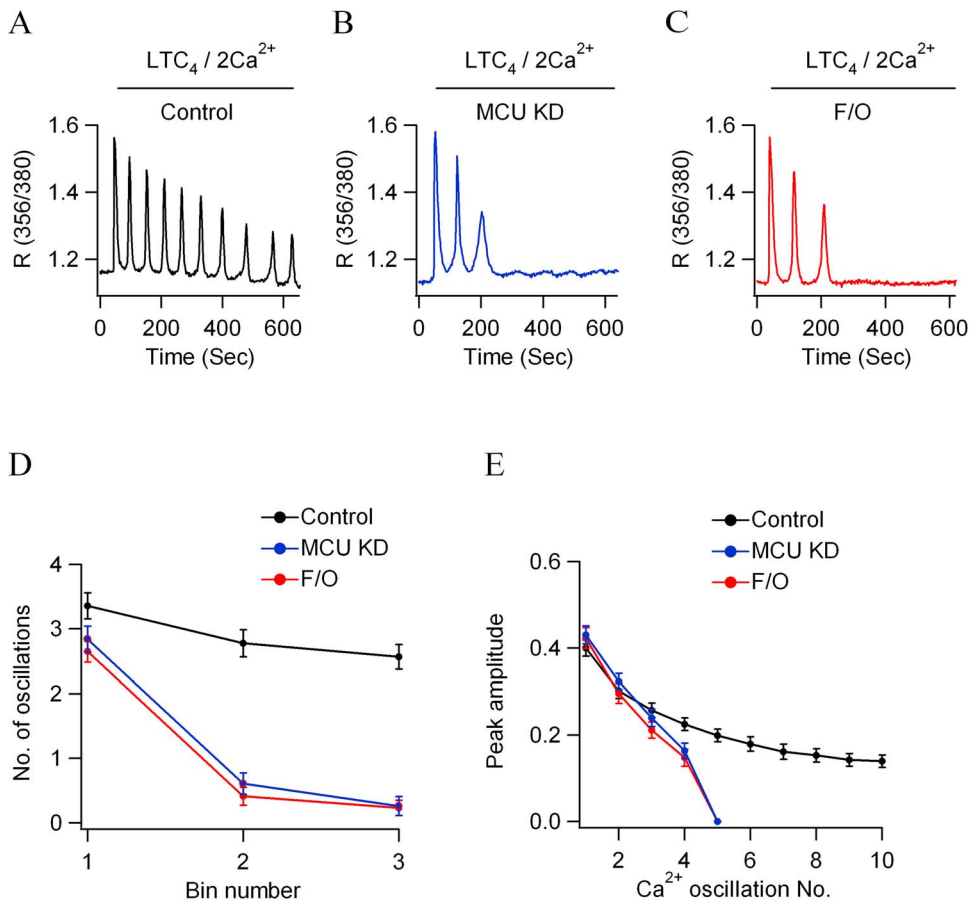
### MCU is required to sustain regenerative $\text{Ca}^{2+}$ release

$\text{Ca}^{2+}$  oscillations to LTC<sub>4</sub> are generated by InsP<sub>3</sub>-dependent  $\text{Ca}^{2+}$  release but store-operated  $\text{Ca}^{2+}$  influx is required to replenish the stores with  $\text{Ca}^{2+}$  in readiness for the next  $\text{Ca}^{2+}$  release phase [21,22]. We separated these components by generating  $\text{Ca}^{2+}$  oscillations to LTC<sub>4</sub> under conditions where both  $\text{Ca}^{2+}$  entry into, and  $\text{Ca}^{2+}$  efflux from, the cells were suppressed. This was accomplished by stimulating cells with LTC<sub>4</sub> in  $\text{Ca}^{2+}$ -free solution supplemented with 1 mM La<sup>3+</sup>, to block plasma membrane  $\text{Ca}^{2+}$ -ATPase pumps. Under these conditions, released  $\text{Ca}^{2+}$  can no longer be exported out of the cell and thus is sequestered back into the stores [21]. Repetitive  $\text{Ca}^{2+}$  oscillations are therefore generated in the absence of store-operated  $\text{Ca}^{2+}$  influx (Fig. 4A; [16]). The number of oscillations declined gradually over time (Fig. 4D), as did the peak amplitude (Fig. 4E). Mitochondrial depolarization (Fig. 4B, D-E) or knockdown of MCU (Figure 4C-E) both accelerated the rundown of the  $\text{Ca}^{2+}$  oscillations and did so at similar rates. Similar results were obtained when we measured matrix  $\text{Ca}^{2+}$  directly. Whereas stimulation with LTC<sub>4</sub> evoked repetitive oscillations in matrix  $\text{Ca}^{2+}$  when applied in  $\text{Ca}^{2+}$ -free solution containing 1 mM La<sup>3+</sup> (Figure 4F, I), the matrix rise was significantly reduced by either FCCP exposure (Figure 4G, I) or after knockdown of MCU (Figure 4H, I).

### MCU reduces inactivation of InsP<sub>3</sub> receptors

An explanation for the accelerated run down of  $\text{Ca}^{2+}$  oscillations to LTC<sub>4</sub> in the presence of mitochondrial depolarisation or after knockdown of the MCU is that the loss in mitochondrial  $\text{Ca}^{2+}$  uptake leads to enhanced  $\text{Ca}^{2+}$ -dependent inactivation of InsP<sub>3</sub> receptors [23,24,25]. To test this idea, we took advantage of the fact that P2Y and cysLT1 receptors target the same intracellular InsP<sub>3</sub>-sensitive  $\text{Ca}^{2+}$  store in RBL-1 cells. Stimulation with ATP in  $\text{Ca}^{2+}$ -free solution containing 1 mM La<sup>3+</sup> and FCCP/oligomycin resulted in a single, large  $\text{Ca}^{2+}$  release transient (Figure 4J). However, the size of this response was reduced considerably when cysLT1 receptors were stimulated first (Figure 4J, K). The size of the  $\text{Ca}^{2+}$  release transient to ATP in the presence of FCCP/oligomycin was similar to that evoked in the absence of mitochondrial depolarisation ( $\Delta R$  of  $0.44 \pm 0.03$  and  $0.43 \pm 0.04$ , 21 cells each). This is not unexpected, because inactivation of the InsP<sub>3</sub> receptor can develop slowly, over tens of seconds [26]. The first couple of  $\text{Ca}^{2+}$  transients to LTC<sub>4</sub> were also unaffected by FCCP/oligomycin or MCU knockdown (Figure 1E); only subsequent oscillations were smaller and ran down more quickly.

By contrast, the response to thapsigargin was not significantly affected by pre-treatment with LTC<sub>4</sub> (Figure 4L,M), demonstrating that store  $\text{Ca}^{2+}$  content was similar for the two conditions. Hence the smaller response to ATP obtained after stimulation with LTC<sub>4</sub> in cells with depolarised mitochondria would be consistent with the idea that InsP<sub>3</sub> receptors have inactivated partially following  $\text{Ca}^{2+}$  release in the presence of impaired mitochondrial  $\text{Ca}^{2+}$  buffering.



**Figure 1. Cytoplasmic Ca<sup>2+</sup> oscillations run down quickly after MCU knockdown.** A, Control recording to LTC<sub>4</sub> in 2 mM external Ca<sup>2+</sup>. B, Response to LTC<sub>4</sub> after MCU knockdown. C, Mitochondrial depolarisation with FCCP (5 μM) accelerates run down of oscillations. D, Aggregate data showing the number of oscillations in 200 seconds recording bins from several experiments are compared (each point is the average of between 36 and 51 cells). E, The size of each oscillation is plotted against Ca<sup>2+</sup> oscillation number for the conditions shown (each point is the average of between 35 and 50 cells).  
doi:10.1371/journal.pone.0101188.g001

### MCU is required for agonist-evoked gene expression

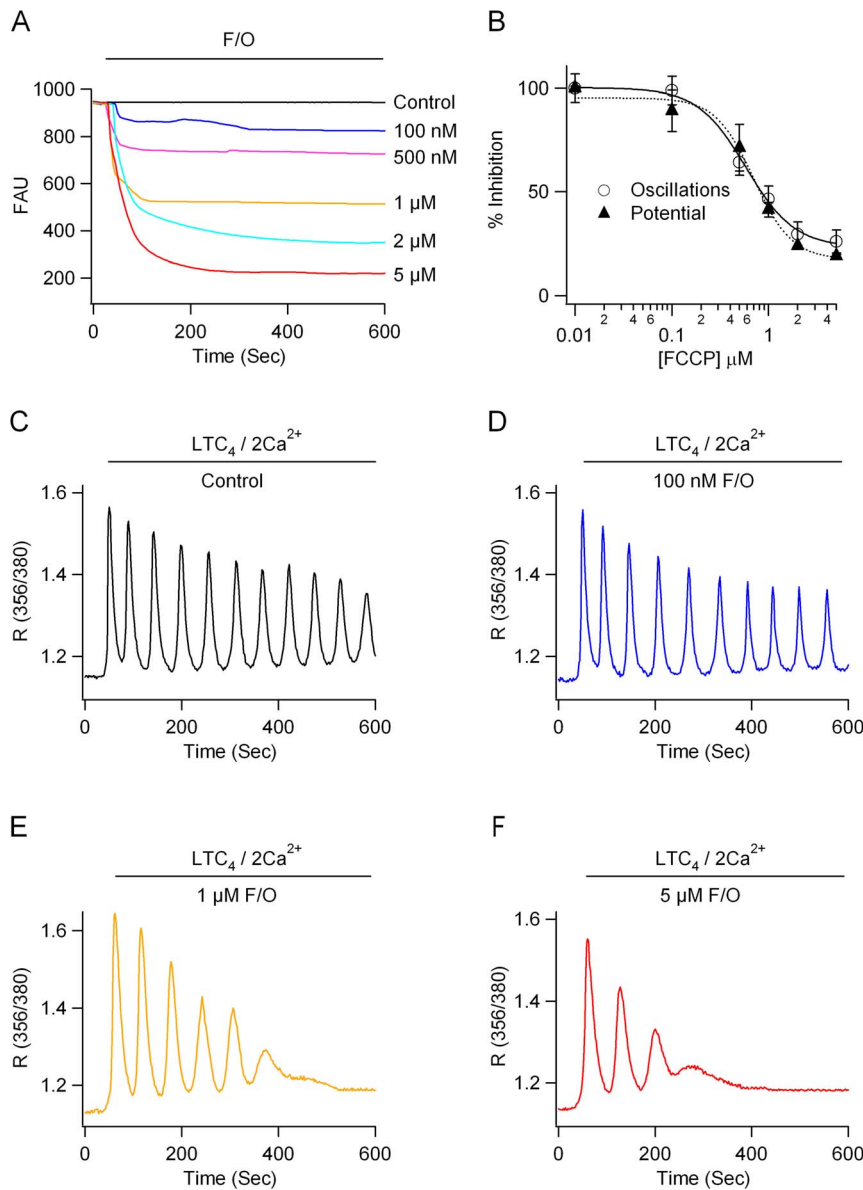
We designed experiments to address the functional impact of MCU on Ca<sup>2+</sup>-dependent responses evoked by modest receptor stimulation. Local Ca<sup>2+</sup> influx through CRAC channels that accompanies oscillatory Ca<sup>2+</sup> release to cysLT1 receptor activation induces Ca<sup>2+</sup>-dependent gene expression [16,17,27]. Stimulation with LTC<sub>4</sub> increased transcription of the immediate early gene *c-fos* (Figure 5A) and this was suppressed either by mitochondrial depolarisation (Figure 5A) or after knockdown of MCU (Figure 5A). Ca<sup>2+</sup> microdomains near open CRAC channels generated during the oscillatory Ca<sup>2+</sup> signals also activate the transcription factor NFAT. We measured NFAT-driven gene expression by using a GFP reporter gene under an NFAT promoter [17,28]. Stimulation with LTC<sub>4</sub> induced a substantial increase in the number of GFP-positive cells (Figure 5B) and this was significantly reduced both by mitochondrial depolarisation (Figure 5B, 5C) or knockdown of MCU (Figure 5B, C).

### MCU sustains store-operated Ca<sup>2+</sup> entry

Previous work has established that impaired mitochondrial Ca<sup>2+</sup> buffering, arising from mitochondrial depolarisation, inhibits CRAC channel activity by enhancing Ca<sup>2+</sup>-dependent slow inactivation of the channels [29,30,31]. We therefore designed experiments to see if Ca<sup>2+</sup> uptake by the MCU supported store-

operated Ca<sup>2+</sup> entry. Readmission of external Ca<sup>2+</sup> to cells 10 minutes after challenge with thapsigargin in Ca<sup>2+</sup>-free solution led to a rapid and large rise in cytoplasmic Ca<sup>2+</sup> as Ca<sup>2+</sup> entered through the open CRAC channels (Figure 6A, 6B). Ratiometric pericam experiments revealed that store-operated Ca<sup>2+</sup> influx was taken up by mitochondria (Figure 6C, 6D). Knockdown of MCU had little effect on thapsigargin-evoked Ca<sup>2+</sup> release but significantly reduced the rate of rise of cytoplasmic Ca<sup>2+</sup> due to store-operated Ca<sup>2+</sup> entry (Figure 6A, B). Mitochondrial Ca<sup>2+</sup> uptake in response to store-operated Ca<sup>2+</sup> entry was also impaired by MCU knockdown (Figure 6C, D). The rate of rise of cytoplasmic Ca<sup>2+</sup> due to store-operated Ca<sup>2+</sup> entry remained significantly lower after MCU knockdown, compared with control cells when experiments were repeated with elevated external K<sup>+</sup> (100 mM with a corresponding reduction in Na<sup>+</sup>) to clamp the cell membrane potential close to 0 mV, and thus eliminate potential changes in electrical gradient for Ca<sup>2+</sup> entry following MCU knockdown. Under these conditions the rate of cytoplasmic Ca<sup>2+</sup> rise following readmission of external Ca<sup>2+</sup> (5 mM) to MCU-deficient cells treated with thapsigargin in Ca<sup>2+</sup>-free solution was 28.9±4% that of controls (p<0.01; aggregate data from 21 MCU-deficient cells and 16 control cells).

CRAC channel activation in response to thapsigargin induced robust *c-fos* expression and this was significantly reduced following



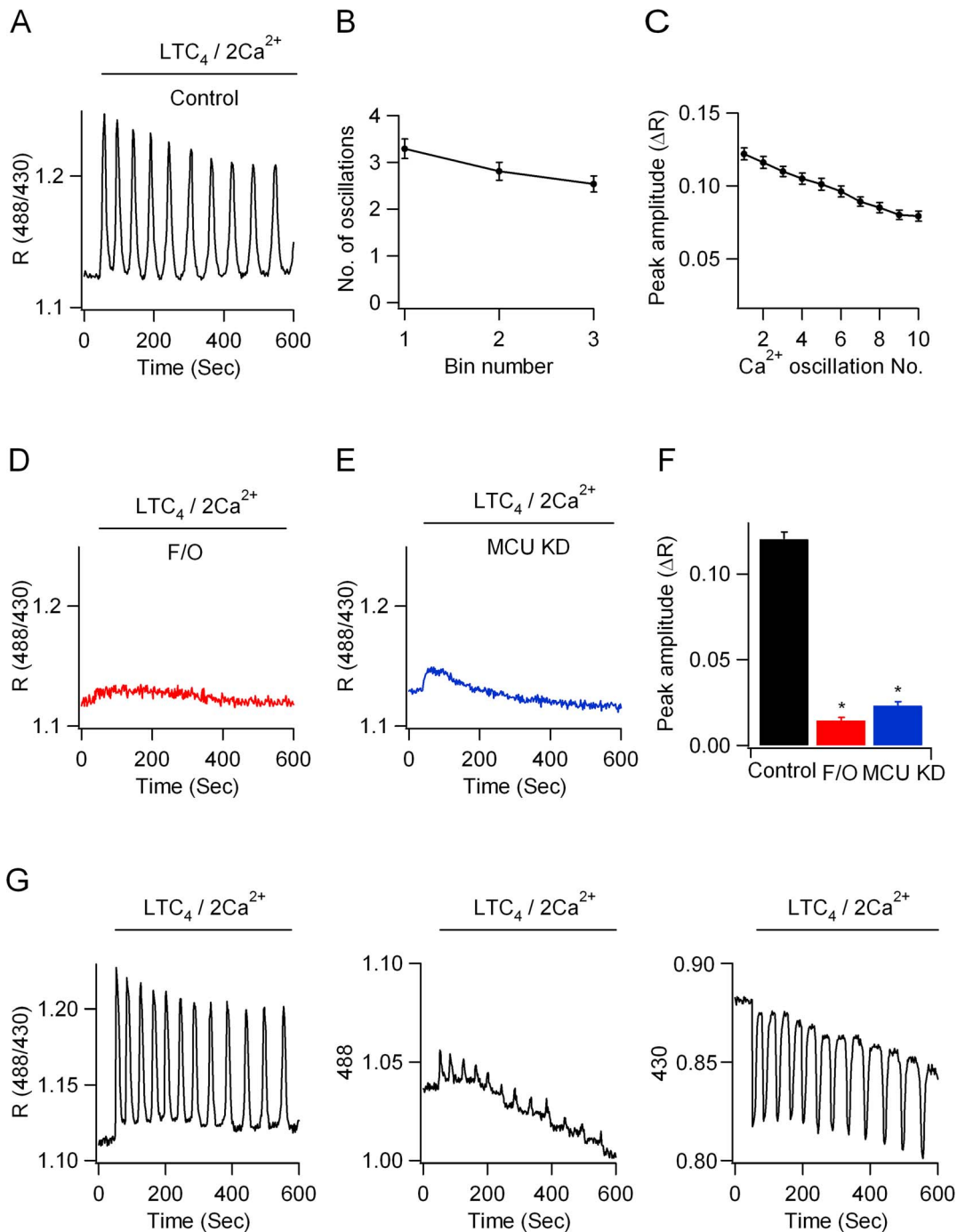
**Figure 2. Graded relationship between mitochondrial depolarisation and run down of Ca<sup>2+</sup> oscillations.** A, Increasing the concentration of FCCCP leads to increased mitochondrial depolarisation. B, The graph compares the effects of different concentrations of FCCCP on mitochondrial membrane potential and the number of Ca<sup>2+</sup> oscillations evoked by LTC<sub>4</sub> over a 600 seconds recording period. C, Control recording to LTC<sub>4</sub>. D-F, Effects of increasing FCCCP concentration of oscillatory Ca<sup>2+</sup> signals. Cells from C-F were all from the same cell preparation and were used on the same day.  
doi:10.1371/journal.pone.0101188.g002

MCU knockdown (Figure 6E). Stimulation with thapsigargin also increased expression of the GFP construct under an NFAT promoter and this too was substantially reduced by MCU knockdown (Figure 6F, G).

## Discussion

The ability of mitochondria to shape the pattern of intracellular Ca<sup>2+</sup> signals has been documented in numerous cell types (reviewed in [1,32]). These organelles rapidly take up cytoplasmic Ca<sup>2+</sup>, either that has been released from stores or has entered across the plasma membrane. Ca<sup>2+</sup> uptake into mitochondria is accomplished through the uniporter, and the pore-forming subunit MCU was recently discovered. The functional importance of

MCU was first described in HeLa cells, where knockdown of the protein suppressed mitochondrial Ca<sup>2+</sup> uptake in response to a maximal dose of the agonist histamine [3,4]. The MCU is also important for mitochondrial Ca<sup>2+</sup> uptake in pancreatic beta cells [33,34] following elevation of cytoplasmic Ca<sup>2+</sup> in response to high concentrations of extracellular glucose. The MCU has also been shown to buffer spontaneous cytoplasmic Ca<sup>2+</sup> oscillations in cultured neonatal rat cardiac myocytes [35]. These oscillations are believed to reflect Ca<sup>2+</sup> overload of the sarcoplasmic reticulum. Here, we have addressed three fundamental issues (i) Is the MCU important for regulating cytoplasmic Ca<sup>2+</sup> signals in response to physiological levels of stimulation? (ii) Through its ability to transport physiological Ca<sup>2+</sup> pulses, does the MCU influence



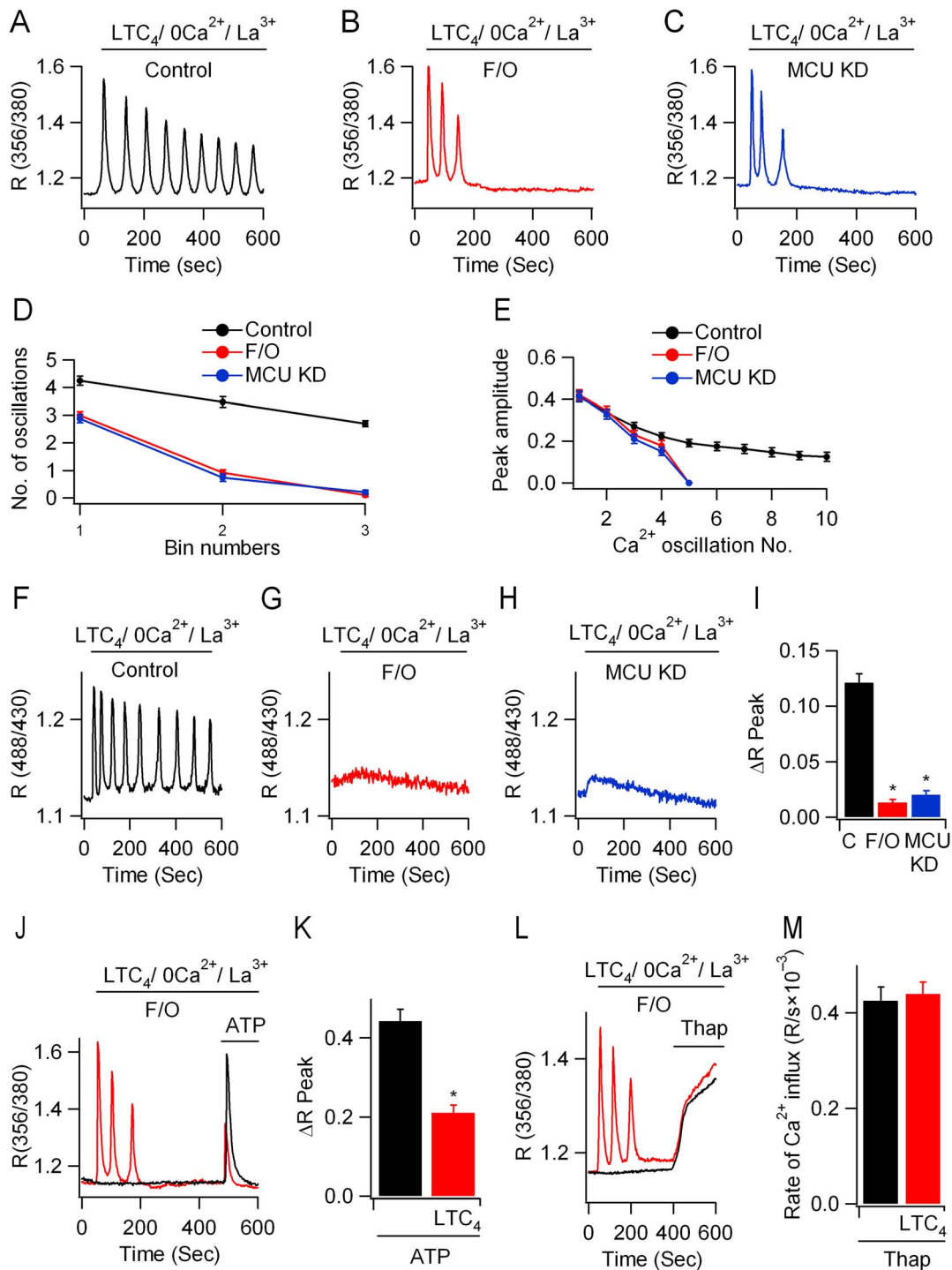
**Figure 3. Leukotriene receptor stimulation induces oscillatory  $\text{Ca}^{2+}$  signals in the mitochondrial matrix.** A, Oscillatory  $\text{Ca}^{2+}$  response to  $\text{LTC}_4$ , measured using the ratiometric pericam. B, The number of oscillations per 200 seconds bin are compared for the conditions shown. Each point is the mean of between 16 and 27 cells. C, The amplitude of each oscillation is compared for the conditions shown. D, Mitochondrial depolarisation with FCCP prevents the matrix rise in  $\text{Ca}^{2+}$ . E, Knockdown of MCU prevents matrix  $\text{Ca}^{2+}$  rise to  $\text{LTC}_4$ . F, Aggregate data are summarised for the conditions shown. Each bar is the average of between 12 and 17 cells. G, Single wavelength pericam (488 nm and 430 nm) recordings are shown along with the corresponding ratio. doi:10.1371/journal.pone.0101188.g003

downstream  $\text{Ca}^{2+}$ -dependent responses such as gene expression?  
 (iii) Is the MCU required to sustain store-operated  $\text{Ca}^{2+}$  influx?

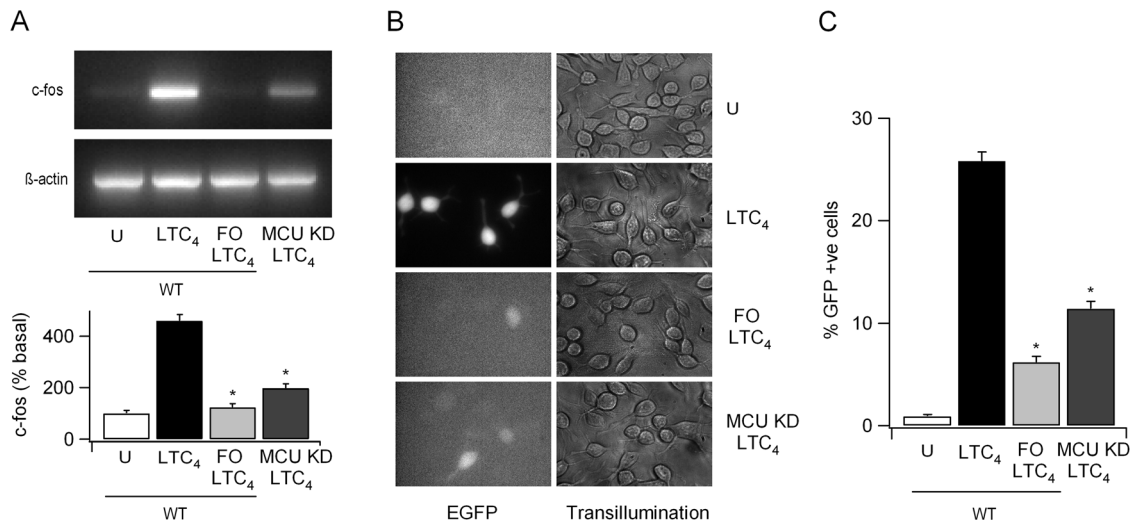
We have found that cytoplasmic  $\text{Ca}^{2+}$  oscillations to modest stimulation of  $\text{cysLT1}$  receptors are faithfully propagated into mitochondria to generate oscillatory  $\text{Ca}^{2+}$  signals within the matrix. Knockdown of MCU or a reduction in the electrical

gradient for  $\text{Ca}^{2+}$  flux through the MCU accelerated the run down of these oscillations. Hence the MCU is important for mitochondrial  $\text{Ca}^{2+}$  uptake in response to physiological levels of cell stimulation. These new findings support and extend our previous patch clamp studies that demonstrated a central role for mitochondria in sustaining CRAC channel activity in the presence





**Figure 4. Regenerative  $\text{Ca}^{2+}$  release in the absence of  $\text{Ca}^{2+}$  influx is regulated by mitochondrial  $\text{Ca}^{2+}$  uptake.** A,  $\text{LTC}_4$  evokes repetitive  $\text{Ca}^{2+}$  oscillations in the presence of 0 mM  $\text{Ca}^{2+}$  external solution supplemented with 1 mM  $\text{La}^{3+}$ . B, The oscillations run down quickly after mitochondrial depolarisation. C, The  $\text{Ca}^{2+}$  oscillations run down quickly after knockdown of MCU. D, Aggregate data comparing the number of oscillations in each 200 seconds bin from several experiments are compared. E, As in panel D, but the amplitude of each oscillation is compared. F, Oscillatory  $\text{Ca}^{2+}$  signals are seen in the matrix in response to  $\text{LTC}_4$  in 0 mM  $\text{Ca}^{2+}$ /1 mM  $\text{La}^{3+}$ . G, Matrix  $\text{Ca}^{2+}$  response is prevented by FCCP. H, Knockdown of MCU also suppresses the matrix  $\text{Ca}^{2+}$  rise in response to  $\text{LTC}_4$  challenge. I, Aggregate data from several experiments are compared. Each bar is the average of between 11 and 18 cells. J,  $\text{Ca}^{2+}$  release evoked by P2Y receptor activation is reduced by pre-exposure to  $\text{LTC}_4$ . K, Aggregate data from several cells are compared. ATP bar represents 27 cells and  $\text{LTC}_4$ /ATP group is 34 cells. L,  $\text{Ca}^{2+}$  release to thapsigargin is unaffected by prior stimulation with  $\text{LTC}_4$ . M, Aggregate data measuring the rate of rise of cytoplasmic  $\text{Ca}^{2+}$  following thapsigargin application (as in panel L) are compared. Thap bar represents data from 11 cells, and  $\text{LTC}_4$ /thap 14 cells. doi:10.1371/journal.pone.0101188.g004



**Figure 5. MCU knockdown impairs leukotriene receptor-dependent gene expression.** A, Mitochondrial depolarisation or knockdown of MCU suppresses *c-fos* transcription. Aggregate data (mean of 3 independent experiments) are shown in lower panel. Cells were stimulated with LTC<sub>4</sub> (160 nM; 4 minutes) in 2 mM external Ca<sup>2+</sup> and then cells were perfused with Ca<sup>2+</sup>-free solution (without agonist) for a further 41 minutes before RNA extraction. B, Expression of GFP (under an NFAT promoter) is shown for the various conditions indicated. C, Aggregate data from several experiments are compared. In these experiments, cells were stimulated with LTC<sub>4</sub> in medium for 15 minutes and this was then replaced with LTC<sub>4</sub>-free medium. GFP expression was measured 24 hours later. doi:10.1371/journal.pone.0101188.g005

of physiological levels of intracellular Ca<sup>2+</sup> buffering [29,31,36]. It has recently been reported that mitochondrial Ca<sup>2+</sup> uptake is essential for STIM1 aggregation on the ER membrane following store depletion in response to an increase in InsP<sub>3</sub>. According to Deak et al., Ca<sup>2+</sup> release through InsP<sub>3</sub> receptors inhibits STIM1 aggregation unless mitochondria are able to buffer the released Ca<sup>2+</sup>. This mechanism could contribute to the accelerated rundown of Ca<sup>2+</sup> oscillations evoked by LTC<sub>4</sub> that we have found in the presence of external Ca<sup>2+</sup> following knockdown of MCU or mitochondrial depolarisation. However, rundown was also prominent after knockdown of MCU in the absence of external Ca<sup>2+</sup> (Figure 4). Because these latter oscillations are independent of STIM1 and STIM2 [37], impaired aggregation of STIM1 following InsP<sub>3</sub>-dependent Ca<sup>2+</sup> release is unlikely to account for the faster rundown.

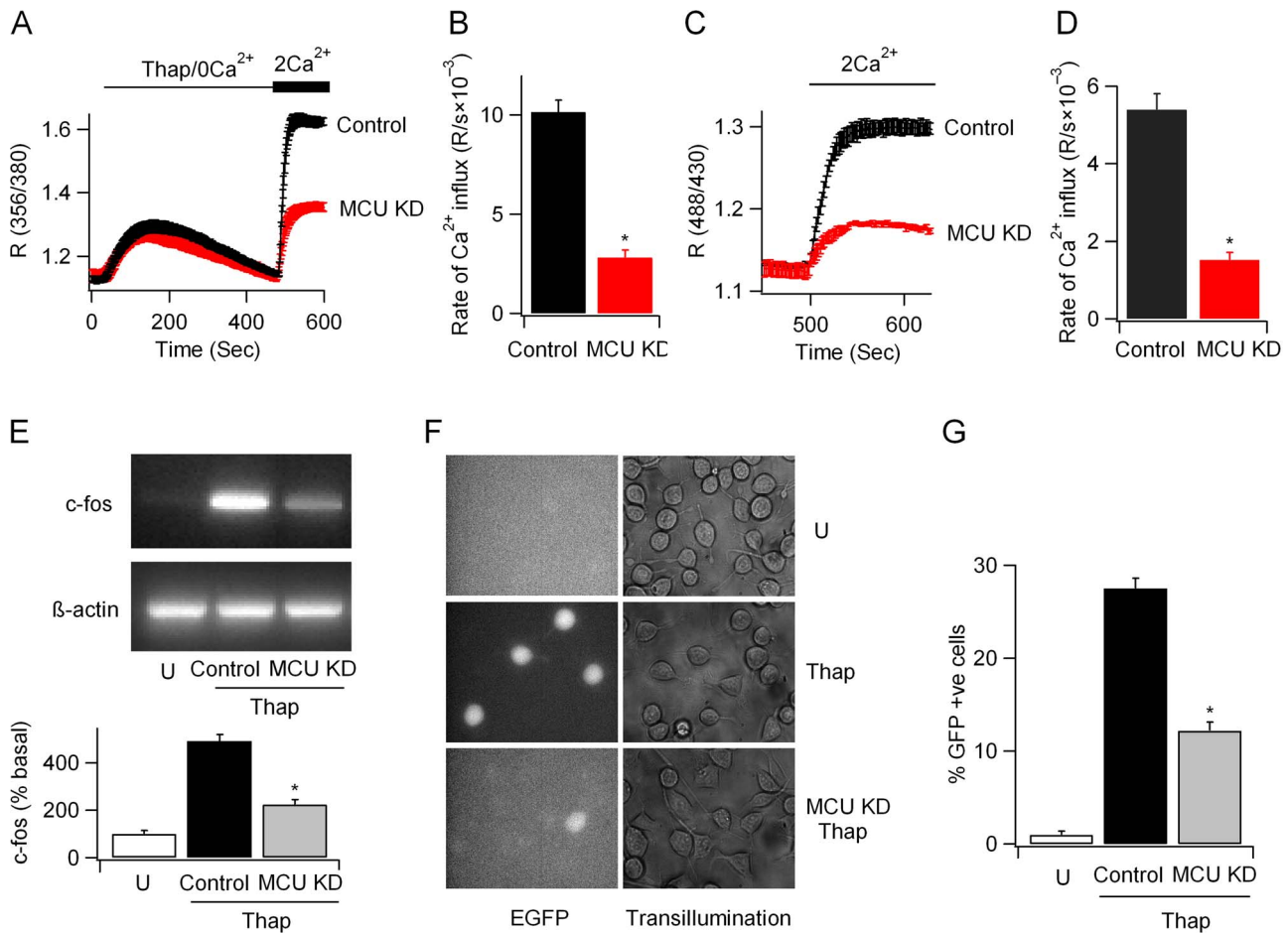
Ca<sup>2+</sup> oscillations induced by cysLT1 receptor activation in mast cells increase expression of the immediate early gene *c-fos*, and stimulate calcineurin-dependent dephosphorylation and subsequent nuclear migration of the transcription factor NFAT, both processes occurring in response to local Ca<sup>2+</sup> influx through CRAC channels that open following the fall in Ca<sup>2+</sup> within the store during the oscillatory responses [16,17]. Stimulation of *c-fos* expression as well as activation of an NFAT reporter gene were both reduced following MCU knockdown or mitochondrial depolarisation. Our data therefore reveal that functional MCU is required for Ca<sup>2+</sup>-dependent gene expression in response to modest receptor activation.

Mechanistically, the run down of the oscillatory Ca<sup>2+</sup> response that occurred following MCU knockdown or mitochondrial depolarisation was due to impaired Ca<sup>2+</sup> release rather than compromised Ca<sup>2+</sup> entry because the response still declined rapidly when cells were stimulated in the absence of external Ca<sup>2+</sup>. Following termination of the oscillatory response, thapsigargin still released Ca<sup>2+</sup> indicating that the endoplasmic reticulum contained a mobilisable Ca<sup>2+</sup> pool. InsP<sub>3</sub> receptors are subject to Ca<sup>2+</sup>-dependent inactivation, a process that inhibits further Ca<sup>2+</sup> release [25]. Mitochondria are often located close to Ca<sup>2+</sup> release sites on

the endoplasmic reticulum, enabling them to buffer Ca<sup>2+</sup> microdomains generated by open InsP<sub>3</sub> receptors [38,39,40]. In RBL-1 cells, portions of endoplasmic reticulum are located within 25 nm of mitochondria [41]. By compromising mitochondrial Ca<sup>2+</sup> buffering, knockdown of MCU or mitochondrial depolarisation would result in a larger local Ca<sup>2+</sup> rise near active InsP<sub>3</sub> receptors, leading to strong Ca<sup>2+</sup>-dependent inactivation. Consistent with this, we found that Ca<sup>2+</sup> release in response to InsP<sub>3</sub> generated by P2Y receptors was significantly reduced when evoked shortly after run down of Ca<sup>2+</sup> oscillations in response to leukotriene receptor stimulation.

Our results also show that MCU helps sustain store-operated Ca<sup>2+</sup> influx. CRAC channels in RBL-1 are subject to inhibition by cytoplasmic Ca<sup>2+</sup> through two distinct mechanisms. Ca<sup>2+</sup>-dependent fast inactivation is triggered by the build-up of Ca<sup>2+</sup> microdomains near open channels, develops within milliseconds and is unaffected by mitochondrial Ca<sup>2+</sup> buffering [29,42]. Ca<sup>2+</sup>-dependent slow inactivation on the other hand develops over several seconds, requires a rise in bulk Ca<sup>2+</sup> and is prevented by maintaining mitochondria in an energised state [29,43]. Slow inactivation is enhanced if mitochondria are depolarised or if the MCU is inhibited with ruthenium red [29]. Our new data strengthen and extend these earlier findings by showing first that mitochondria buffer Ca<sup>2+</sup> entry through CRAC channels and second that MCU is required to sustain store-operated Ca<sup>2+</sup> entry. By enabling mitochondria to take up Ca<sup>2+</sup>, MCU sustains CRAC channel activity and downstream gene expression through prevention of the development of Ca<sup>2+</sup>-dependent slow inactivation.

Finally, to our knowledge, our study is the first to demonstrate the importance of MCU in the immune system. Through their ability to buffer cytoplasmic Ca<sup>2+</sup>, mitochondria are important regulators of the spatial and temporal profile of Ca<sup>2+</sup> signalling in mast cells and T lymphocytes and thereby help determine the extent of activation of important Ca<sup>2+</sup>-driven responses such as secretion of the pro-inflammatory leukotrienes [44] and NFAT activation [17,30]. Although knockdown of MCU in isolated cells



**Figure 6. MCU is required for supporting store-operated  $\text{Ca}^{2+}$  entry.** A, Store-operated  $\text{Ca}^{2+}$  entry, evoked by 2  $\mu\text{M}$  thapsigargin, is inhibited by knockdown of MCU. B, Aggregate data, measuring the rate of rise of cytoplasmic  $\text{Ca}^{2+}$  following readmission of external  $\text{Ca}^{2+}$  (as in Panel A) are compared. Control denotes 38 cells and MCU KD 29 cells. C, Matrix  $\text{Ca}^{2+}$  measurements show that store-operated  $\text{Ca}^{2+}$  influx is buffered by mitochondria in an MCU-dependent manner. D, Aggregate data from experiments as in Panel C are compared. Control denotes 21 cells and MCU KD 17 cells. E, MCU knockdown reduces c-fos transcription to thapsigargin (2  $\mu\text{M}$  applied for 4 minutes in external  $\text{Ca}^{2+}$ , followed by wash in  $\text{Ca}^{2+}$ -free solution for 41 minutes before RNA extraction). Aggregate data from 3 independent experiments are shown in the lower panel. F, GFP reporter expression (under an NFAT promoter) stimulated by thapsigargin (100 nM) is reduced following MCU knockdown. doi:10.1371/journal.pone.0101188.g006

shows a key role for the channel in numerous fundamental physiological processes and functional knockout of the protein impairs gastrulation in zebrafish [45] and bioenergetics in *Trypanosoma brucei* [46], surprisingly the MCU knockout mouse, obtained using the gene trap method, shows only a mild phenotype [47]. The mice are slightly smaller than wild type littermates and are less able to perform strenuous work. The mice also exhibit altered regulation of pyruvate dehydrogenase. On the other hand, human mutations of MICU1 are associated with proximal myopathy, learning difficulties and a progressive extrapyramidal movement disorder and which are thought to arise from defective mitochondrial  $\text{Ca}^{2+}$  signaling [48]. Future work, using conditional knock out of MCU in immune cells, will help shed insight into the role of the channel in the immune response.

**Methods**

**Cell culture**

RBL-1 cells were purchased from ATCC (via UK supplier LGC) and were cultured at 37°C with 5%  $\text{CO}_2$  in Dulbecco's

modified Eagle's medium (DMEM) supplemented with 10% fetal bovine serum and 1% penicillin/streptomycin, as described [17]. Cells were split using Trypsin-EDTA and plated onto glass coverslips for use 24–48 hours later.

**Fluorescence  $\text{Ca}^{2+}$  measurements**

Cytosolic  $\text{Ca}^{2+}$  measurements were carried out at room temperature using the IMAGO charge-coupled device camera-based system from TILL Photonics, as described previously [44]. Cells were alternately excited at 356 and 380 nm (20-ms exposures), at 0.5 Hz. Images were analyzed offline using IGOR Pro for Windows. Cells were loaded with Fura-2/AM (1  $\mu\text{M}$ ) for 40 min at room temperature in the dark and then washed three times in standard external solution composed of 145 mM NaCl, 2.8 mM KCl, 2 mM  $\text{CaCl}_2$ , 2 mM  $\text{MgCl}_2$ , 10 mM D-glucose, 10 mM HEPES, pH 7.4, with NaOH. Cells were left for 15 min to allow further de-esterification.  $\text{Ca}^{2+}$ -free solution had the following composition: 145 mM NaCl, 2.8 mM KCl, 2 mM  $\text{MgCl}_2$ , 10 mM D-glucose, 10 mM HEPES, 0.1 mM EGTA, pH 7.4, with NaOH.  $\text{Ca}^{2+}$ -free solution containing  $\text{La}^{3+}$  had the following composition: 145 mM NaCl, 2.8 mM KCl, 2 mM



MgCl<sub>2</sub>, 10 mM D-glucose, 10 mM HEPES, 1 mM LaCl<sub>3</sub>, pH 7.4, with NaOH. Ca<sup>2+</sup> signals are plotted as R, which denotes the 356/380 nm ratio. R<sub>min</sub> was 0.42 and R<sub>max</sub> was 2.1. LTC<sub>4</sub> was bought from Cayman Chemicals.

### Mitochondrial Ca<sup>2+</sup> measurements

Cells expressing the mitochondrial ratiometric pericam were analyzed 24 hours after transfection by videoimaging using the TiLL Photonics system. Cells were illuminated alternately at 430 and 488 nm (20 msec exposures) and the emitted light was filtered at >510 nm.

### Measurement of mitochondrial membrane potential

Cells were loaded with TMRE (50 nM) in standard external solution for 30 minutes in the dark, followed by three washes in external solution. Cells were excited at 545 nm and emitted light was collected at >560 nm.

### Gene reporter assay

24–36 hours following transfection with the EGFP-based reporter plasmid that contained an NFAT promoter (gift from Dr Yuri Usachev, University of Iowa), cells were stimulated with LTC<sub>4</sub> and the % of cells expressing EGFP measured subsequently (~24 hours later). Gene expression was defined as fluorescence 3xSD > cell autofluorescence, measured in non-transfected cells, as described [49]. Cells were stimulated in culture medium and maintained in the incubator for ~24 hours prior to detection of

EGFP. In experiments where thapsigargin was the stimulus, cells were exposed to 100 nM thapsigargin for 15 minutes in culture medium before thapsigargin-containing medium was replaced with normal DMEM overnight.

### siRNA knockdown

Cells were transfected with the Amaxa system, as described. siRNA against MCU was from Origene (Cat No.: SR508660).

### RT-PCR

Total RNA was extracted from RBL cells by using an RNeasy Mini Kit (Qiagen), as described [18]. RNA was quantified spectrophotometrically by absorbance at 260 nm. Total RNA (1 µg) was reverse-transcribed using the iScript™ cDNA Synthesis Kit (Bio-Rad), according to the manufacturer's instructions. Following cDNA synthesis, PCR amplification was then performed using BIOX-ACT™. ShortDNAPolymerase (Bioline) with primers specific for the detection of c-fos were synthesized by Invitrogen. The PCR products were electrophoresed through an agarose gel and visualized by ethidium bromide staining.

### Author Contributions

Conceived and designed the experiments: KS SD AP. Performed the experiments: KS SD. Analyzed the data: KS. Contributed reagents/materials/analysis tools: KS SD. Contributed to the writing of the manuscript: AP.

### References

- Rizzuto R, De Stefani D, Raffaello A, Mammucari C (2013) Mitochondria as sensors and regulators of calcium signalling. *Nature Reviews Mol Cell Biology* 13: 566–578.
- Clapham DE (2008) Calcium Signaling. *Cell* 131: 1047–1058.
- De Stefani D, Raffaello A, Teardo E, Szabo I, Rizzuto R (2011) A forty-kilodalton protein of the inner membrane is the mitochondrial calcium uniporter. *Nature* 476: 336–340.
- Baughman JM, Perocchi F, Girgis HS, Plovanich M, Belcher-Timme CA, et al. (2011) Integrative genomics identifies MCU as an essential component of the mitochondrial calcium uniporter. *Nature* 476: 341–345.
- Chaudhuri D, Sancak Y, Mootha VK, Clapham DE (2013) MCU encodes the pore conducting mitochondrial calcium currents. *ELife* 2: e00704.
- Perocchi F, Gohil VM, Girgis HS, Bao XR, McCombs JE, et al. (2010) MICU1 encodes a mitochondrial EF hand protein required for Ca<sup>2+</sup> uptake. *Nature* 467: 291–296.
- Plovanich M, Bogorad RL, Sancak Y, Kamer KJ, Strittmatter L, et al. (2013) MICU2, a paralog of MICU1, resides within the mitochondrial uniporter complex to regulate calcium handling. *PLoS One* 8.
- Mallilankaraman K, Cárdenas C, Doonan PJ, Chandramoorthy HC, Irrinki KM, et al. (2012) MCUR1 is an essential component of mitochondrial Ca<sup>2+</sup> uptake that regulates cellular metabolism. *Nature Cell Biology* 14: 1336–1344.
- Sancak Y, Markhard AL, Kitami T, Kovács-Bogdán E, Kamer KJ, et al. (2013) EMRE is an essential component of the mitochondrial calcium uniporter complex. *Science* 342: 1379–1382.
- Palty R, Silverman WF, Hershinkel M, Caporale T, Sensi SL, et al. (2010) NCLX is an essential component of mitochondrial Na<sup>+</sup>/Ca<sup>2+</sup> exchange. *Proceedings of the National Academy of Sciences USA*: 436–441.
- Jiang D, Zhao L, Clapham DE (2009) Genome-wide RNAi screen identifies Letm1 as a mitochondrial Ca<sup>2+</sup>/H<sup>+</sup> antiporter. *Science* 326: 144–147.
- Kirichok Y, Krapivinsky G, Clapham DE (2004) The mitochondrial calcium uniporter is a highly selective ion channel. *Nature* 427: 360–364.
- Rizzuto R, Pozzan T (2006) Microdomains of intracellular calcium: molecular determinants and functional consequences. *Physiol Rev* 86: 369–408.
- Berridge MJ (1993) Inositol trisphosphate and calcium signalling. *Nature* 361: 315–325.
- Parekh AB (2011) Decoding cytosolic Ca<sup>2+</sup> oscillations. *TIBS* 36: 78–87.
- Di Capite J, Ng S-W, Parekh AB (2009) Decoding of cytoplasmic Ca<sup>2+</sup> oscillations through the spatial signature drives gene expression. *Current Biology* 19: 853–858.
- Kar P, Nelson C, Parekh AB (2011) Selective activation of the transcription factor NFAT1 by calcium microdomains near Ca<sup>2+</sup> release-activated Ca<sup>2+</sup> (CRAC) channels. *Journal of Biological Chemistry* 286: 14795–14803.
- Ng SW, Bakowski D, Nelson C, Mehta R, Almeyda R, et al. (2012) Cysteinyl leukotriene type I receptor desensitization sustains Ca<sup>2+</sup>-dependent gene expression. *Nature* 482: 111–115.
- Nagai T, Sawano A, Park ES, Miyawaki A (2001) Circularly permuted green fluorescent proteins engineered to sense Ca<sup>2+</sup>. *Proceedings of the National Academy of Sciences USA* 98: 3197–3202.
- Robert V, Gurlini P, Tosello V, Nagai T, Miyawaki A, et al. (2001) Beat-to-beat oscillations of mitochondrial [Ca<sup>2+</sup>] in cardiac cells. *EMBO Journal* 20: 4998–5007.
- Bird GS, Putney JWJ (2005) Capacitative calcium entry supports calcium oscillations in human embryonic kidney cells. *J Physiol (Lond)* 562: 697–706.
- Wedel B, Boyles RR, Putney JW, Bird GS (2007) Role of the Store-operated Calcium Entry Proteins, Stim1 and Orai1, in Muscarinic-Cholinergic Receptor Stimulated Calcium Oscillations in Human Embryonic Kidney Cells. *Journal of Physiology* 579: 679–689.
- Bezprozvanny I, Watras J, Ehrlich BE (1991) Bell-shaped calcium-response curves of Ins(1,4,5)P<sub>3</sub>- and calcium-gated channels from endoplasmic reticulum of cerebellum. *Nature* 351.
- Finch EA, Turner TJ, Goldin SM (1991) Calcium as a coagonist of inositol 1,4,5-trisphosphate-induced calcium release. *Science* 252: 443–446.
- Foskett JK, White C, Cheung KH, Mak DO (2007) Inositol trisphosphate receptor Ca<sup>2+</sup> release channels. *Physiological reviews* 87: 593–658.
- Mak DO, Foskett JK (1997) Single-channel kinetics, inactivation, and spatial distribution of inositol trisphosphate (IP<sub>3</sub>) receptors in *Xenopus* oocyte nucleus. *Journal of General Physiology* 109: 571–587.
- Ng S-W, Nelson C, Parekh AB (2009) Coupling of Ca<sup>2+</sup> microdomains to spatially and temporally distinct cellular responses by the tyrosine kinase Syk. *Journal of Biological Chemistry* 284: 24767–24772.
- Kim M-S, Usachev YM (2009) Mitochondrial Ca<sup>2+</sup> cycling facilitates activation of the transcription factor NFAT in sensory neurons. *Journal of Neuroscience* 29: 12101–12114.
- Gilbert J-A, Parekh AB (2000) Respiring mitochondria determine the pattern of activation and inactivation of the store-operated Ca<sup>2+</sup> current ICRAC. *EMBO Journal* 19: 6401–6407.
- Hoth M, Button D, Lewis RS (2000) Mitochondrial control of calcium channel gating: a mechanism for sustained signaling and transcriptional activation in T lymphocytes. *Proceedings of the National Academy of Sciences USA* 97: 10607–10612.
- Glitsch MD, Bakowski D, Parekh AB (2002) Store-operated Ca<sup>2+</sup> entry depends on mitochondrial Ca<sup>2+</sup> uptake. *EMBO Journal* 21: 6744–6754.
- Duchen MD (1999) Contributions of mitochondria to animal physiology: from homeostatic sensor to calcium signalling and cell death. *Journal of Physiology (Lond)* 516: 1–17.
- Alam MR, Groschner LN, Parichatikanond W, Kuo L, Bondarenko AI, et al. (2012) Mitochondrial Ca<sup>2+</sup> uptake 1 (MICU1) and mitochondrial ca<sup>2+</sup> uniporter (MCU) contribute to metabolism-secretion coupling in clonal pancreatic β-cells. *Journal of Biological Chemistry* 287: 34445–34454.

34. Tarasov AI, Semplici F, Ravier MA, Bellomo EA, Pullen TJ, et al. (2012) The mitochondrial Ca<sup>2+</sup> uniporter MCU is essential for glucose-induced ATP increases in pancreatic  $\beta$ -cells. *PLoS One* 7: e39722.
35. Drago I, De Stefani D, Rizzuto R, Pozzan T (2012) Mitochondrial Ca<sup>2+</sup> uptake contributes to buffering cytoplasmic Ca<sup>2+</sup> peaks in cardiomyocytes. *Proceedings of the National Academy of Sciences USA* 109: 12986–12991.
36. Gilbert J-A, Bakowski D, Parekh AB (2001) Energized mitochondria increase the dynamic range over which inositol 1,4,5-trisphosphate activates store-operated calcium influx. *EMBO Journal* 20: 2672–2679.
37. Kar P, Bakowski D, Di Capite J, Nelson C, Parekh AB (2012) Different agonists recruit different stromal interaction molecule proteins to support cytoplasmic Ca<sup>2+</sup> oscillations and gene expression. *Proceedings of the National Academy of Sciences USA* 109: 6969–6974.
38. Rizzuto R, Pinton P, Carrington W, Fay FS, Fogarty KE, et al. (1998) Close contacts with the endoplasmic reticulum as determinants of mitochondrial Ca<sup>2+</sup> responses. *Science* 280: 1763–1766.
39. Csordas G, Renken C, Varnai P, Walter L, Weaver D, et al. (2006) Structural and functional features and significance of the physical linkage between ER and mitochondria. *Journal of Cell Biology* 174: 915–921.
40. de Brito OM, Scorrano L (2008) Mitofusin 2 tethers endoplasmic reticulum to mitochondria. *Nature* 456: 605–610.
41. Moreau B, Nelson C, Parekh AB (2006) Biphasic regulation of mitochondrial Ca uptake by cytosolic Ca concentration. *Current Biology* 16: 1672–1677.
42. Fierro L, Parekh AB (1999) Fast calcium-dependent inactivation of calcium release-activated calcium current (CRAC) in RBL-1 cells. *Journal of Membrane Biology* 168: 9–17.
43. Parekh AB (1998) Slow feedback inhibition of calcium release-activated calcium current by calcium entry. *Journal of Biological Chemistry* 273: 14925–14932.
44. Chang WC, Parekh AB (2004) Close functional coupling between CRAC channels, arachidonic acid release and leukotriene secretion. *Journal of Biological Chemistry* 279: 29994–29999.
45. Prudent J, Popgeorgiev N, Bonneau B, Thibaut J, Gadet R, et al. (2013) Bcl-wav and the mitochondrial calcium uniporter drive gastrula morphogenesis in zebrafish. *Nature Communications* 4: 2330.
46. Huang G, Vercesi AE, Docampo R (2014) Essential regulation of cell bioenergetics in *Trypanosoma brucei* by the mitochondrial calcium uniporter. *Nature Communications* 4: 2865.
47. Pan X, Liu J, Nguyen T, Liu C, Sun J, et al. (2013) The physiological role of mitochondrial calcium revealed by mice lacking the mitochondrial calcium uniporter. *Nature Cell Biology* 15: 464–472.
48. Logan CV, Szabadkai G, Sharpe JA, Parry DA, Torelli S, et al. (2014) Loss-of-function mutations in MICU1 cause a brain and muscle disorder linked to primary alterations in mitochondrial calcium signaling. *Nature Genetics* 46: 188–193.
49. Kar P, Nelson C, Parekh AB (2012) CRAC channels drive digital activation and provide analog control and synergy to Ca<sup>2+</sup>-dependent gene regulation. *Current Biology* 22: 242–247.