



# Low-Dose Levodopa Protects Nerve Cells from Oxidative Stress and Up-Regulates Expression of pCREB and CD39

Shi-Ying Zhong<sup>1</sup>, Yong-Xing Chen<sup>1</sup>, Min Fang, Xiao-Long Zhu, Yan-Xin Zhao\*, Xue-Yuan Liu\*

Department of Neurology, Shanghai Tenth People's Hospital of Tongji University, School of Medicine, Shanghai, China

## Abstract

**Objective:** This study aimed to investigate the influence of low-dose levodopa (L-DOPA) on neuronal cell death under oxidative stress.

**Methods:** PC12 cells were treated with L-DOPA at different concentrations. We detected the L-DOPA induced reactive oxygen species (ROS). Meanwhile, MTT and LDH assay were performed to determine the proliferation and growth of PC12 cells with or without ROS scavenger. In addition, after pretreatment with L-DOPA at different concentrations alone or in combination with CD39 inhibitor, PC12 cells were incubated with hydrogen peroxide (H<sub>2</sub>O<sub>2</sub>) and the cell viability was evaluated by MTT and LDH assay. In addition, the expression of pCREB and CD39 was detected by immunofluorescence staining and Western blot assay in both cells and rat's brain after L-DOPA treatment.

**Results:** After treatment with L-DOPA for 3 days, the cell proliferation and growth were promoted when the L-DOPA concentration was <30 μM, while cell proliferation was comparable to that in control group when the L-DOPA concentration was >30 μM. Low dose L-DOPA could protect the PC12 cells from H<sub>2</sub>O<sub>2</sub> induced oxidative stress, which was compromised by CD39 inhibitor. In addition, the expression of CD39 and pCREB increased in both PC12 cells and rats' brain after L-DOPA treatment.

**Conclusions:** L-DOPA at different concentrations has distinct influence on proliferation and growth of PC12 cells, and low dose (<30 μM) L-DOPA protects PC12 cells against oxidative stress which might be related to the up-regulation of CD39 and pCREB expression.

**Citation:** Zhong S-Y, Chen Y-X, Fang M, Zhu X-L, Zhao Y-X, et al. (2014) Low-Dose Levodopa Protects Nerve Cells from Oxidative Stress and Up-Regulates Expression of pCREB and CD39. PLoS ONE 9(4): e95387. doi:10.1371/journal.pone.0095387

**Editor:** Aditya Bhushan Pant, Indian Institute of Toxicology Reserach, India

**Received:** December 29, 2013; **Accepted:** March 25, 2014; **Published:** April 17, 2014

**Copyright:** © 2014 Zhong et al. This is an open-access article distributed under the terms of the Creative Commons Attribution License, which permits unrestricted use, distribution, and reproduction in any medium, provided the original author and source are credited.

**Funding:** The study was supported by the Combined Program of Shanghai Science and Technology Committee (No. 11DZ1920903) and Program of Shanghai Municipal Health Bureau (20114319). The funders had no role in study design, data collection and analysis, decision to publish, or preparation of the manuscript.

**Competing Interests:** The authors have declared that no competing interests exist.

\* E-mail: zhao\_yanxin@126.com (YXZ); liu1304@yeah.net (XYL)

† These authors contributed equally to this work.

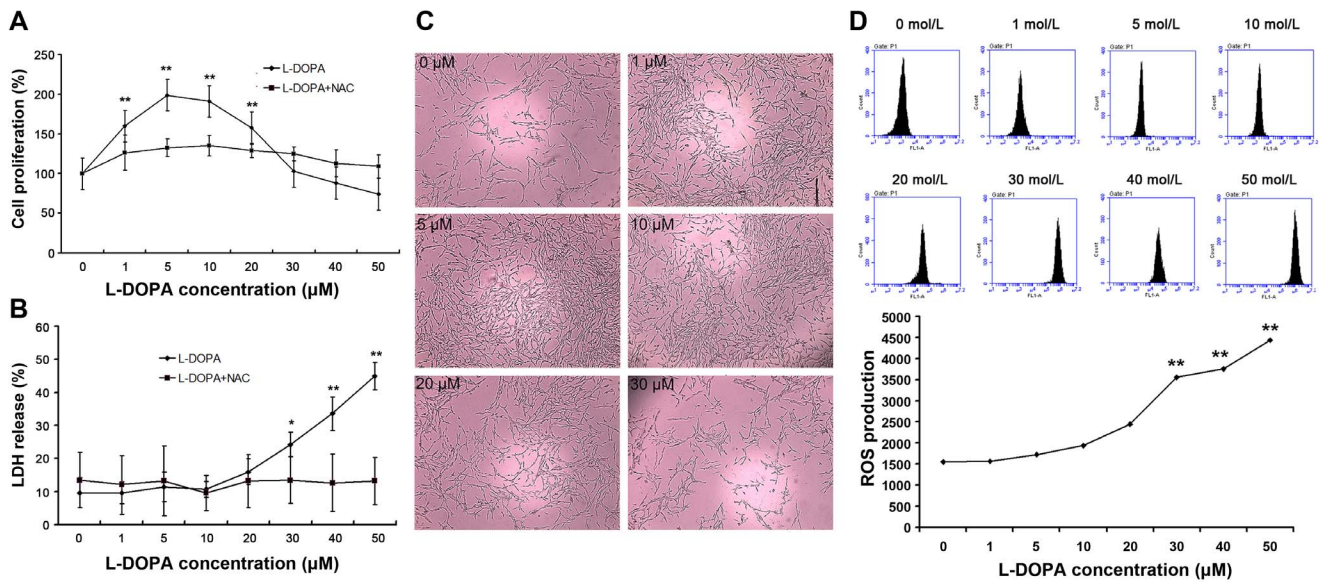
## Introduction

Levodopa (L-DOPA) is the most widely used drug in the treatment of Parkinson's disease (PD). However, whether L-DOPA has neurotoxicity or not is still unclear. The clinical evidence for its neurotoxicity is based on the fact that L-DOPA alone can not alleviate PD, the honeymoon of this treatment last only 2–5 years and it may finally cause adverse effects in the long term treatment. Furthermore, elevated oxidative stress during the L-DOPA treatment may lead to the gradual degeneration of dopaminergic neurons because the self-oxidation or enzymatic oxidation of L-DOPA may result in the production of reactive oxygen species (ROS), causing damage to neurons, including the residual nigrostriatal dopaminergic neurons [1]. Oxidative stress has been found to involve in the pathogenesis of PD, and L-DOPA may further deteriorate the oxidative stress of the nervous system, leading to the aggravation of PD [2].

However, there is still evidence indicating that L-DOPA has no neurotoxicity. For example, neurons may survive for a few days in the presence of low dose L-DOPA [3–6]. *In vivo* study showed that long-term treatment of high dose L-DOPA did not cause damage

to dopaminergic cells, while increased the density of dopaminergic nerve fibers [7–9]. In patients whose nigra-striatal system is intact, long-term L-DOPA treatment does not cause any damage to the dopaminergic neurons [10]. Recently, a multicenter, randomized, double-blind four-year clinical trial (ELLDOPA) reported the protective effect of L-DOPA in 361 patients with PD [10].

Transcription factors (including cAMP response element binding protein [CREB] family) are closely related to the metabolism of monoamine neurotransmitters including dopamine. After being phosphorylated at amino acid residue Ser133 [11], pCREB binds to the cAMP response element (CRE) and subsequently activates the transcription of downstream genes, playing an important role in the survival and repair of neurons under stress [12]. CREB is regulated by a variety of signaling pathways [13,14]. Stress including ischemia and hypoxia can phosphorylate CREB and up-regulate the expression of some factors including brain derived neurotrophic factor (BDNF) [15,16]. Catecholamines such as dopamine (DA) can bind to DA D1 receptor and activate adenylate cyclase – protein kinase A (AC-PKA) signal pathway through the Gs protein, which leads to



**Figure 1. Effect of L-DOPA at different concentrations on proliferation of PC12 cells with or without ROS scavenger ( $\chi \pm \sigma$ ,  $n = 10$ ).** PC12 cells were treated with 0, 1, 5, 10, 20, 30, 40 and 50  $\mu\text{mol/L}$  L-DOPA for 3 days with or without NAC (as ROS scavenger) pretreatment. The cell proliferation and growth were detected by MTT assay and LDH assay and cells were also observed under an optical microscope. The OD in treated groups was compared with that of untreated group. (A) The cell proliferation with or without NAC pretreatment was detected by MTT. Results showed L-DOPA at lower than 30  $\mu\text{M}$  promoted the proliferation of PC12 cells, while proliferation remained unchanged when L-DOPA was greater than 30  $\mu\text{M}$ . This promoted proliferation was compromised by NAC. (B) The cell growth was detected by LDH assay. Results showed that the LDH content in 1, 5, 10 and 20  $\mu\text{M}$  groups was lower than that in 30, 40 and 50  $\mu\text{M}$  groups, meaning that cells had better growth in lower L-DOPA concentration groups. NAC could also eliminate this influence. (C) The growth of PC12 cells without NAC pretreatment was observed under an optical microscope ( $\times 100$ ). PC12 cells had a higher intensity after treatment with L-DOPA at 1, 5, 10 and 20  $\mu\text{M}$ , while the number of PC12 cells reduced in 30, 40 and 50  $\mu\text{M}$  groups. (D) Intracellular ROS level was measured in each group. The higher the L-DOPA concentration, the higher the ROS level was. \* $P < 0.01$ , \*\* $P < 0.05$  vs. 0  $\mu\text{mol/L}$  L-DOPA group. doi:10.1371/journal.pone.0095387.g001

the phosphorylation of its substrates such as CREB, resulting in increase in pCREB expression [17].

Elevated extracellular ATP is known as a sign of physical stress and cell damage, while adenosine may limit the damage induced by physical defensive response. CD39, a protein expressed on cell surface, plays a neuroprotective role by regulating the T terminal phosphate hydrolysis of ATP and ADP and, together with CD73, turning AMP into adenosine [18]. Although CD39 plays an important role under the stress condition, the regulation of CD39 expression at molecular level is still poorly understood. A silicon analysis shows that there are several CRE-like sequences at the potential regulatory sites of CD39 promoter, one of which is close enough to the transcription start point [19]. Liao et al confirmed that CD39 transcription was regulated through the cAMP-PKA-pCREB pathway [20].

Metabolism of L-DOPA causes oxidative stress in dopaminergic neurons, but a large number of experiments and clinical studies show the neuroprotective effects of L-DOPA. Whether L-DOPA exerts neuroprotective effect via the cAMP-CREB-pCREB-CD39 pathway to alleviate oxidative stress is still unclear. In this study, the protective effect of L-DOPA on PC12 cells against oxidative stress was investigated, and the role of pCREB and CD39 in this protective effect was also explored.

## Materials and Methods

### Ethics Statement

Animal experiments were performed in accordance with the National Guidelines for the Use and Care of Laboratory Animals and this study was approved by the Institutional Animal Care and Use Committee of Tongji University.

### Cell Culture

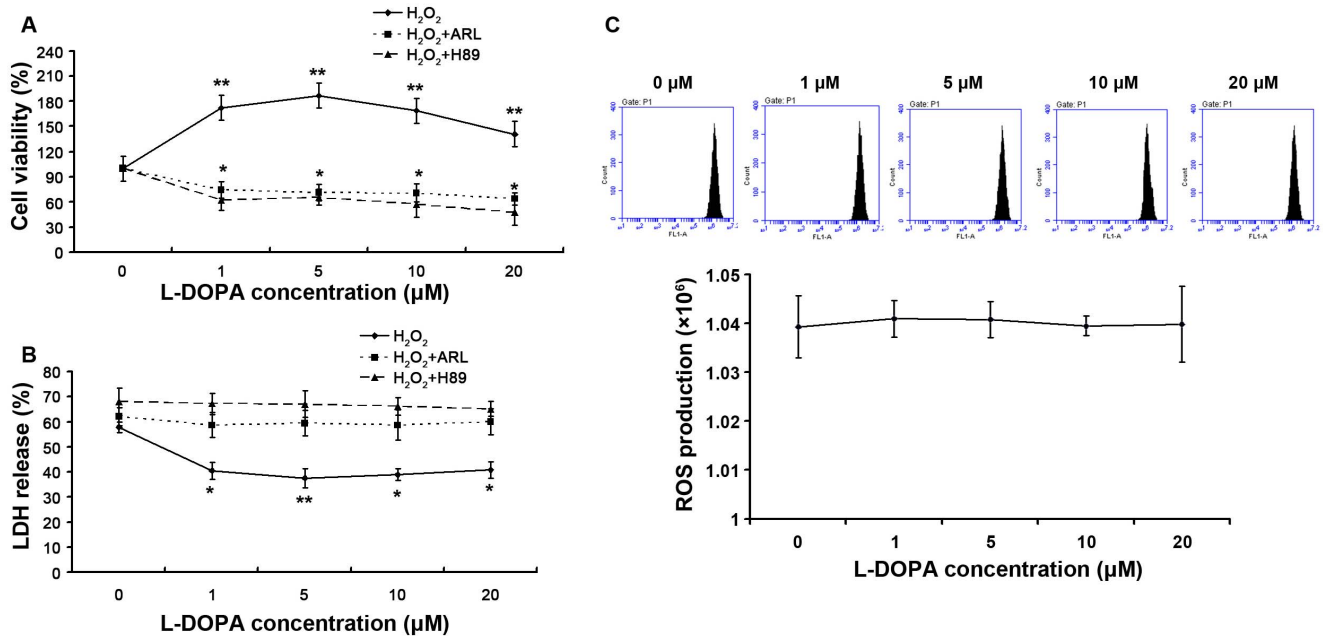
PC12 cells were from the laboratory of Tenth People's Hospital of Tongji University and cultured in high glucose DMEM containing 10% horse serum, 5% fetal calf serum (FCS) and penicillin/streptomycin (25 units/ml and 25  $\mu\text{g/ml}$ , respectively) in an atmosphere with 5%  $\text{CO}_2$  at 37°C. Cells were passaged once every 3 days. Further experiments were performed using PC12 cells in the logarithmic growth phase.

### Proliferation of PC12 Cells Treated by L-DOPA at Different Concentrations with or without ROS Scavenger

After passaging, PC12 cells were seeded into 96-well plates ( $5 \times 10^3/\text{well}$ ; 200  $\mu\text{l}/\text{well}$ ) and incubated in an environment with 5%  $\text{CO}_2$  at 37°C for 24 h. Then, these cells were divided into 8 groups according to concentrations of L-DOPA: 0, 1, 5, 10, 20, 30, 40 and 50  $\mu\text{mol/L}$  [3–5]. There were 10 wells in each group. The proliferation and growth of PC12 cells were determined by MTT assay and LDH assay and were observed under an optical microscope after treatment for 3 days. Intracellular ROS levels were measured in each group. In addition, N-acetyl-L-cysteine (NAC; Sigma USA) was used as a ROS scavenger. Cells were pretreated with 10 mM NAC (Sigma, USA) for 24 h and then incubated with L-DOPA at different concentrations. The cell growth was also determined by MTT and LDH assay.

### Viability of L-DOPA Treated PC12 Cells with or without CD39 Inhibitor Pre-treatment Under Oxidative Stress

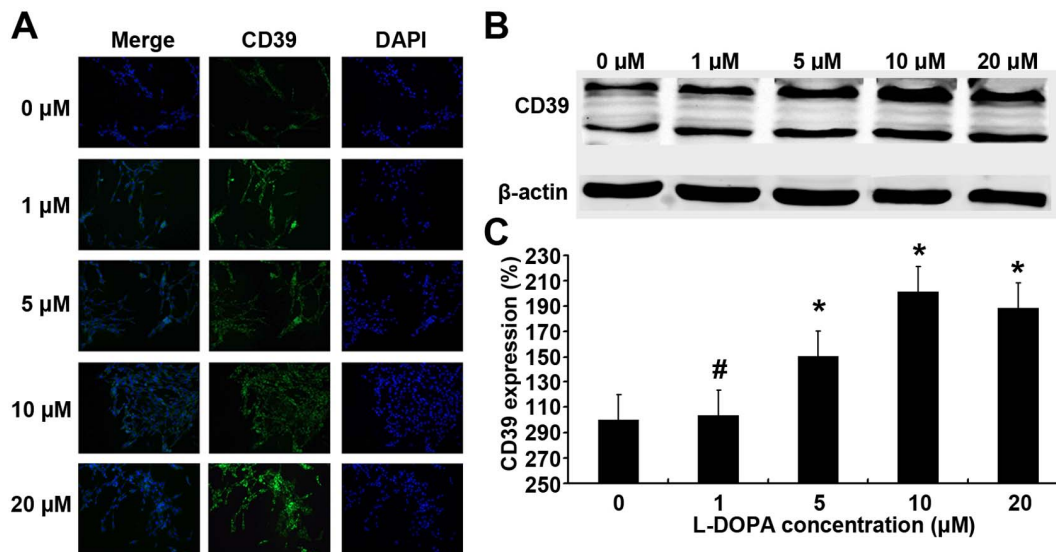
After passaging, PC12 cells were seeded into 96-well plates ( $5 \times 10^3/\text{well}$ ; 200  $\mu\text{l}/\text{well}$ ) and incubated in an environment with 5%  $\text{CO}_2$  at 37°C for 24 h. These cells were divided into two



**Figure 2. Effect of low dose L-DOPA with or without CD39 inhibitor pre-treatment on the oxidative stress ( $\chi \pm \sigma$ , n = 10).** PC12 cells were seeded into 96-well plates ( $5 \times 10^3$ /well; 200 µl/well) and divided into two groups: L-DOPA treatment group and CD39 inhibitor pre-treatment group (cells were pre-incubated with 0.5 mM ARL 67156 for 30 min or 10 µM H89 for 1 h before L-DOPA treatment). Cells were incubated with L-DOPA at different concentrations (0, 1, 5, 10 and 20 µmol/L) for 3 days. On the fourth day, cells were incubated with 100 µmol/L H<sub>2</sub>O<sub>2</sub> for 8 h. MTT assay and LDH assay were performed to determine the viability of PC12 cells. (A) The cell viability with or without CD39 inhibitor pretreatment was detected by MTT assay. Results showed the viability increased as compared to untreated group, while H89 and ARL eliminated this effect. (B) The cell viability was detected by LDH assay. Results showed that the LDH content in L-DOPA treated groups was lower than that in untreated group, while H89 and ARL eliminated this effect. (C) Intracellular ROS level was measured. H<sub>2</sub>O<sub>2</sub> could induce oxidative stress. \*\*P<0.01, \*P<0.05 vs 0 µmol/L L-DOPA group. doi:10.1371/journal.pone.0095387.g002

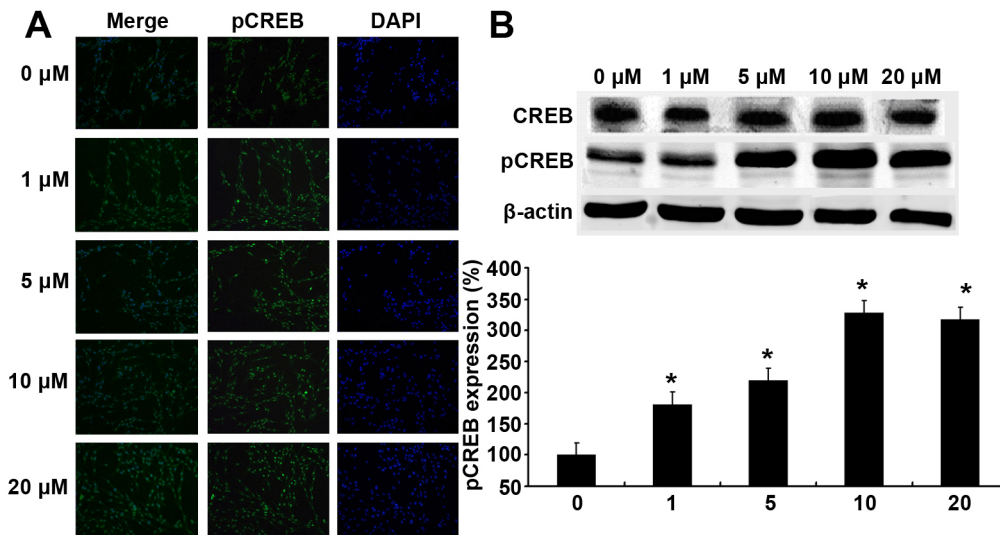
groups: L-DOPA treatment group and CD39 inhibitor pre-treatment group (cells were pre-incubated with 0.5 mM ARL 67156 [6-N, N'-diethyl-D-β-γ-dibromomethylene ATP, Santa

Cruz USA] for 30 min or 10 µM H89 [a PKA inhibitor] for 1 h before L-DOPA treatment). The nucleotide analogue ARL 67156 is a selective inhibitor of ecto-ATPase of CD39/NTPDase



**Figure 3. Effect of low dose L-DOPA on CD39 protein expression.** PC12 cells were treated with L-DOPA at different concentration for 3 days, and CD39 protein expression was measured by immunofluorescence staining (A) and western blot assay (B). L-DOPA treatment resulted in an increase in CD39 expression when compared with un-treated group and peaked at 10 µM L-DOPA (C). \*P<0.05 vs. untreated group. #P>0.05 vs. untreated group. doi:10.1371/journal.pone.0095387.g003





**Figure 4. Effect of low-dose L-DOPA on PCREB protein expression.** PC12 cells were treated with L-DOPA at different concentrations for 3 days, and PCREB protein expression was measured by immunofluorescence staining (A) and western blot assay (B). L-DOPA treatment increased pCREB expression when compared with untreated cells and peaked at 10 μM L-DOPA (C). \* $P < 0.05$  vs. untreated group. doi:10.1371/journal.pone.0095387.g004

family [69]. Cells were then treated with L-DOPA at different concentrations (0, 1, 5, 10 and 20 μmol/L) for 3 days. On the fourth day, cells were incubated with 100 μmol/L H<sub>2</sub>O<sub>2</sub> for 8 h. Finally, MTT assay and LDH assay were performed to determine the viability of PC12 cells. The oxidative stress induced by H<sub>2</sub>O<sub>2</sub> was evaluated by detection of ROS.

#### Methylthiazol Tetrazolium (MTT) Assay

In brief, culture medium was removed and cells were washed with PBS twice before they were incubated with 20 μL MTT (5 mg/mL, Sigma USA) for 4 h at 37°C. Formazan crystals in the cells were solubilized using dimethyl sulfoxide with plate shaking for 10 min. Absorbance (A) was measured at 570 nm with a reference wavelength of 655 nm. The OD of PC12 cells treated with L-DOPA at different concentrations was normalized to that of untreated cells. Cell proliferation (%) =  $(A_{\text{sample}} - A_{\text{blank}}) / (A_{\text{control}} - A_{\text{blank}}) \times 100\%$ . ( $A_{\text{sample}}$ : average OD of L-DOPA-treated cells,  $A_{\text{control}}$ : average OD of L-DOPA-untreated cells,  $A_{\text{blank}}$ : MTT+medium).

#### Lactate Dehydrogenase (LDH) Assay

LDH was detected with a diagnostic kit (Jiancheng Bioengineering, Nanjing, China) according to the manufacturer's instructions. Briefly, the supernatant from each well was collected, and 0.2% Triton X-100 (Sigma, St. Louis, MO, USA) was added to each well to lyse cells. The lysate was centrifuged at 10,000 × g for 2 min at 4°C and the supernatant was collected. Then, the samples were incubated with NADH and pyruvate for 15 min at 37°C, and the reaction was stopped by adding 0.4 M NaOH. The activity of LDH was calculated after detection of A at 440 nm. The percentage of specific LDH release was determined as follow: LDH release (%) =  $(LDH_{\text{supernatant}} - LDH_{\text{blank}}) / (LDH_{\text{supernatant}} + LDH_{\text{lysate}} - LDH_{\text{blank}}) \times 100\%$ .

#### Measurement of Intracellular ROS

The intracellular ROS was estimated using the ROS Fluorometric assay kit (GENMED SCIENTIFICS INC. USA) following the manufacturer's instructions. Briefly, 100 μL of staining fluid

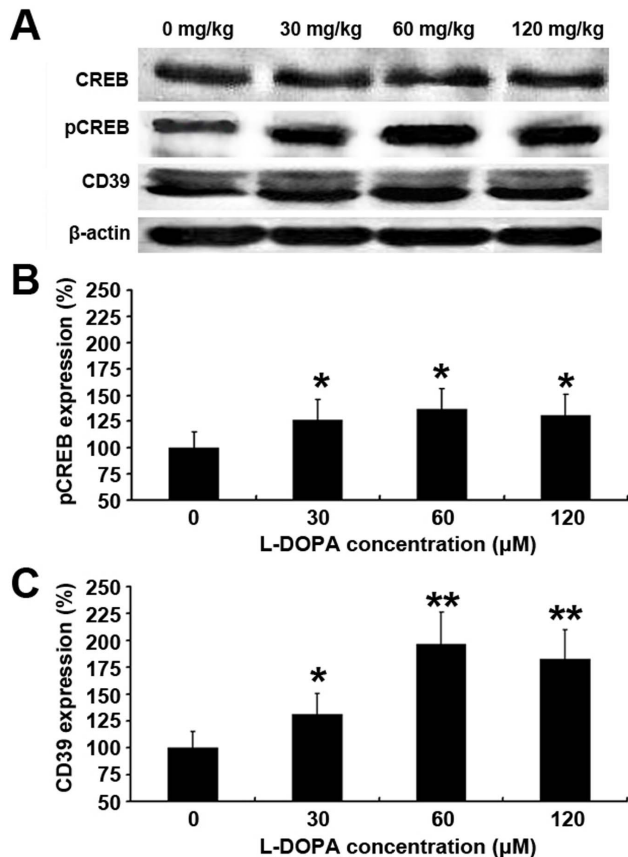
containing reagent B and reagent C was added into each well after the medium was removed. After incubation at 37°C, the fluid was replaced with 100 μL of reagent D. Then, these cells were examined with a fluorescence microplate reader.

#### Immunofluorescence Staining

PC12 cells were placed on coverslips in 6-well plates ( $8 \times 10^6$ /well; 3 ml/well) and incubated in an environment with 5% CO<sub>2</sub> at 37°C for 24 h. Then, these cells were divided into 4 groups according to the concentrations of L-DOPA: 0, 1, 5, 10 and 20 μmol/L. After treatment for 3 days, cells were processed as follows: cells were washed in 1 × PBS, and fixed for 20 min in 4% paraformaldehyde. Then, cells were treated with 0.2% Triton and 1% BSA for 1 h and with anti-CD39 or anti-pCREB antibody (1:400, Abcam) for 45 min. Following incubation with fluorescein isothiocyanate-conjugated rabbit anti-rat IgG (1:1000, Abcam) and DAPI (1:5000) for 30 min at room temperature, mounting was performed with antifade reagents (Prolong Gold), and photomicrographs were captured using an Olympus microscope.

#### Total Protein Extraction

Total protein lysate was prepared using RIPA buffer (50 mM Tris, 150 mM NaCl, 1% Triton X-100, 1% sodium deoxycholate, 0.1% SDS, pH 7.4) in the presence of proteinase and phosphatase inhibitor cocktail (Sigma, MO, USA). For protein extraction, PC12 cells were transferred into 150-mm dishes ( $1.5 \times 10^6$ /dish; 8 ml/dish) and incubated in an environment with 5% CO<sub>2</sub> at 37°C for 24 h. Then, these cells were divided into 4 groups according to the concentrations of L-DOPA: 0, 1, 5, 10 and 20 μmol/L. After treatment for 3 days, these cells were washed twice with cold PBS and lysed in 300 μL of RIPA buffer. Then, these cells were transferred into eppendorf tubes and incubated on ice for 30 min, followed by vortexing once every 10 min. The supernatant was collected after centrifugation at 12000 rpm for 5 min at 4°C. Protein concentrations were determined by BCA protein assay. Loading buffer was added into each sample and the mixture was stored at -80°C after boiling for 10 min.



**Figure 5. Western blot assay of CD39 and pCREB protein expression in the brains of rats treated with L-DOPA.** Rats were treated with L-DOPA at different concentrations (0, 30, 60 and 120 mg/kg) once daily for 7 days, and the brains were quickly harvested for western blot assay of the expression of CD39 and pCREB (A). Protein bands of pCREB and CD39 were scanned, and their OD was determined and normalized to that of an internal reference (B, C). \* $P < 0.05$  and \*\* $P < 0.01$  vs. CG group. doi:10.1371/journal.pone.0095387.g005

### Western Blot Assay

Samples (20 μg protein) were subjected to 10% SDS-polyacrylamide gel electrophoresis and electrophoretically transferred to Immobilon-P polyvinylidene difluoride membranes (Millipore, Bedford, MA, USA). After blocking in Tris-buffered saline in 0.05% Tween-20 (TBST) containing 5% nonfat dry milk for 1 h, the membranes were washed thrice with TBST at room temperature and then incubated with primary antibody in 3% BSA/PBS overnight (anti-CD39: abcam 1:2000; anti-pCREB: abcam 1:1500; tubulin: 1:2000) at 4°C. Incubation was done with the secondary antibody (rat anti-rabbit 1:5000; Abcam, Britain) at room temperature for 1 h. The protein bands were scanned with the Odyssey color infrared fluorescence imaging system (LI-COR Company, USA). The expression of target proteins was normalized to that of β-actin.

### Animals

In this study, 18 male Sprague Dawley (SD) rats weighing 200–250 g were purchased from the Animal Center of Tongji University, Shanghai, China. Animals were allowed to acclimatize to the environment for 7 days before experiments. These rats were housed in an air-conditioned room at a constant temperature of

22±1°C with 12:12 h light/dark cycle and given *ad libitum* access to water and food.

### Pharmacological Treatments

The animals were randomly divided into 4 groups (n = 6 per group) in which rats were treated with L-DOPA at 120 mg/kg (highest dose group, HstG), 60 mg/kg (high dose group, HG), 30 mg/kg (low dose group, LG), and 0 mg/kg (control group, CG). L-DOPA was administered intraperitoneally (i.p.) in HstG, HG and LG for 7 days. In CG group, 0.1 M HCL was administered once daily for 7 days. At the end of study, animals were sacrificed by over dose of anesthesia (30 mg/kg sodium pentobarbital). The brain was harvested for biochemical examinations.

### Immunofluorescence Staining and Western Blot Assay

For immunofluorescence staining, animals were intraperitoneally anesthetized with sodium pentobarbital (30 mg/kg) and perfused transcardially with 150 mL of PBS and then with 400 mL of ice-cold 4% paraformaldehyde in phosphate buffer (PB; pH 7.4). The brain was quickly harvested and post-fixed for 24 h in 4% paraformaldehyde. The 4-mm coronal slices containing cortex and substantia nigra were obtained. Paraffin-embedded sections (4 μm in thickness) were incubated with primary antibodies against anti-CD39 or anti-pCREB (1:200 Abcam) at 4°C overnight and then with fluorescein isothiocyanate-conjugated rabbit anti-rat IgG. Images were captured using an Olympus microscope (Center Valley, PA), and Image-Pro Plus software 6.0 (USA) was used to detect the fluorescence intensity. Six sections per rat were visualized, and positively stained cells were counted in five randomly selected fields (magnification: ×200). The number of positive cells in 30 fields per rat (n = 6 per group) was averaged.

For Western blot assay, animals were intraperitoneally anesthetized with sodium pentobarbital at 30 mg/kg and the rat brain was harvested. Then, the striatal tissues were collected, frozen rapidly, homogenized, subjected to 10% SDS-polyacrylamide gel electrophoresis and then transferred onto Immobilon-P polyvinylidene difluoride membranes (Millipore, Bedford, MA, USA).

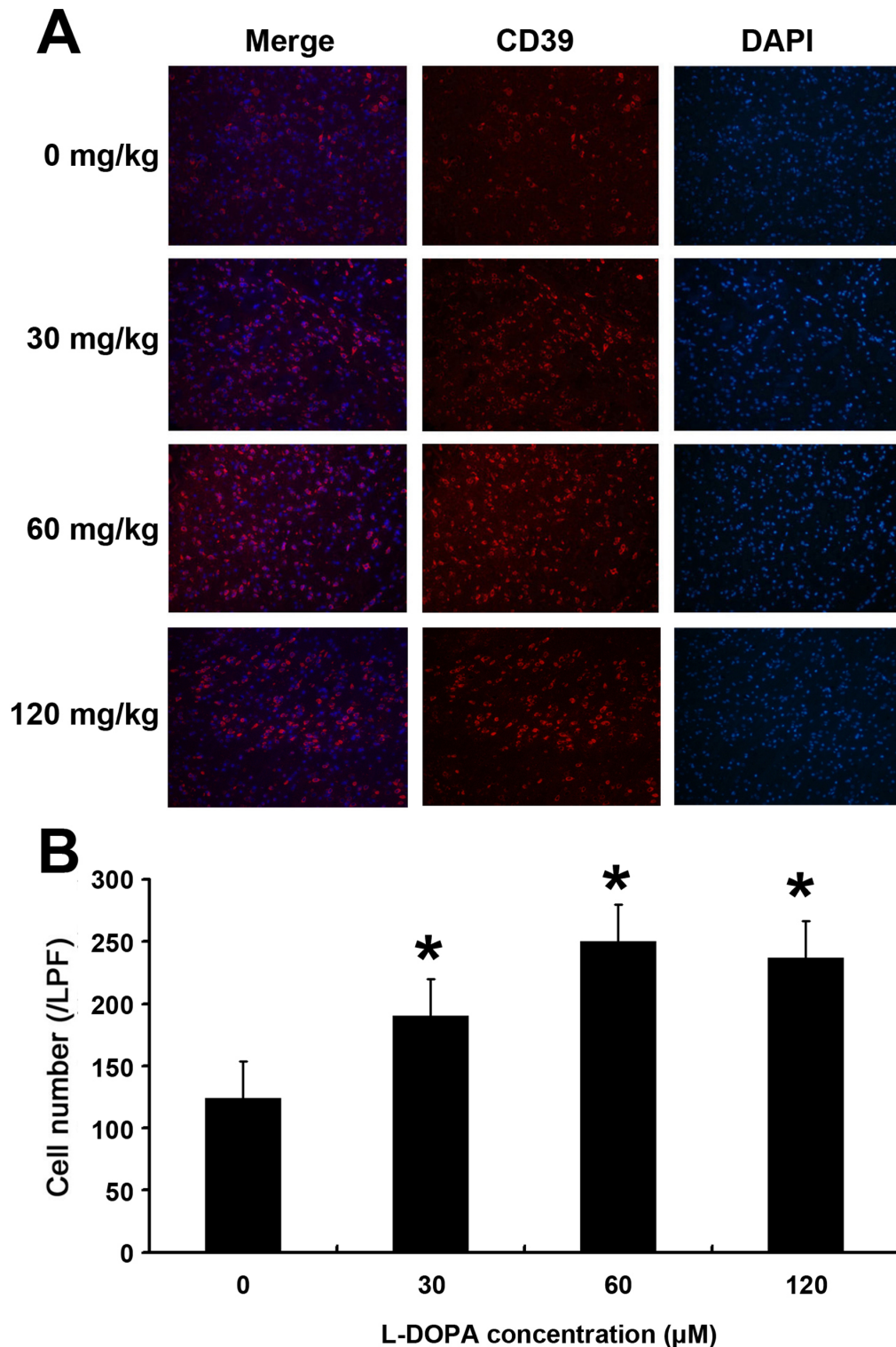
### Statistical Analysis

Immunofluorescence Images were viewed and captured using an Olympus microscope, and the Image-Pro Plus software 6.0 was used to analyze the immunofluorescence intensity. The product of intensity and area of protein bands represents the relative protein expression. Statistical analysis was performed with SPSS version 18.0. Data were expressed as mean ± standard deviation. One-way analysis of variance (ANOVA) and paired student's t-test were used for comparisons and data were from at least three independent experiments. A value of  $P < 0.05$  was considered statistically significant.

## Results

### Influence of L-DOPA at Different Concentrations on the Growth of PC12 Cells is Related to the ROS Due to L-DOPA Metabolism

PC12 cells were treated with L-DOPA at different concentrations for 3 days, and the cell proliferation and growth were detected by MTT assay and LDH assay (Figure 1A, B). MTT assay showed the proportion of viable cells was 159.85±37.3% ( $P < 0.01$ ), 198.91±38.1% ( $P < 0.01$ ), 191.07±31.9% ( $P < 0.01$ ), 158.03±28.3% ( $P < 0.01$ ) 103.03±28.3% ( $P > 0.05$ ), 88.00±18.4%

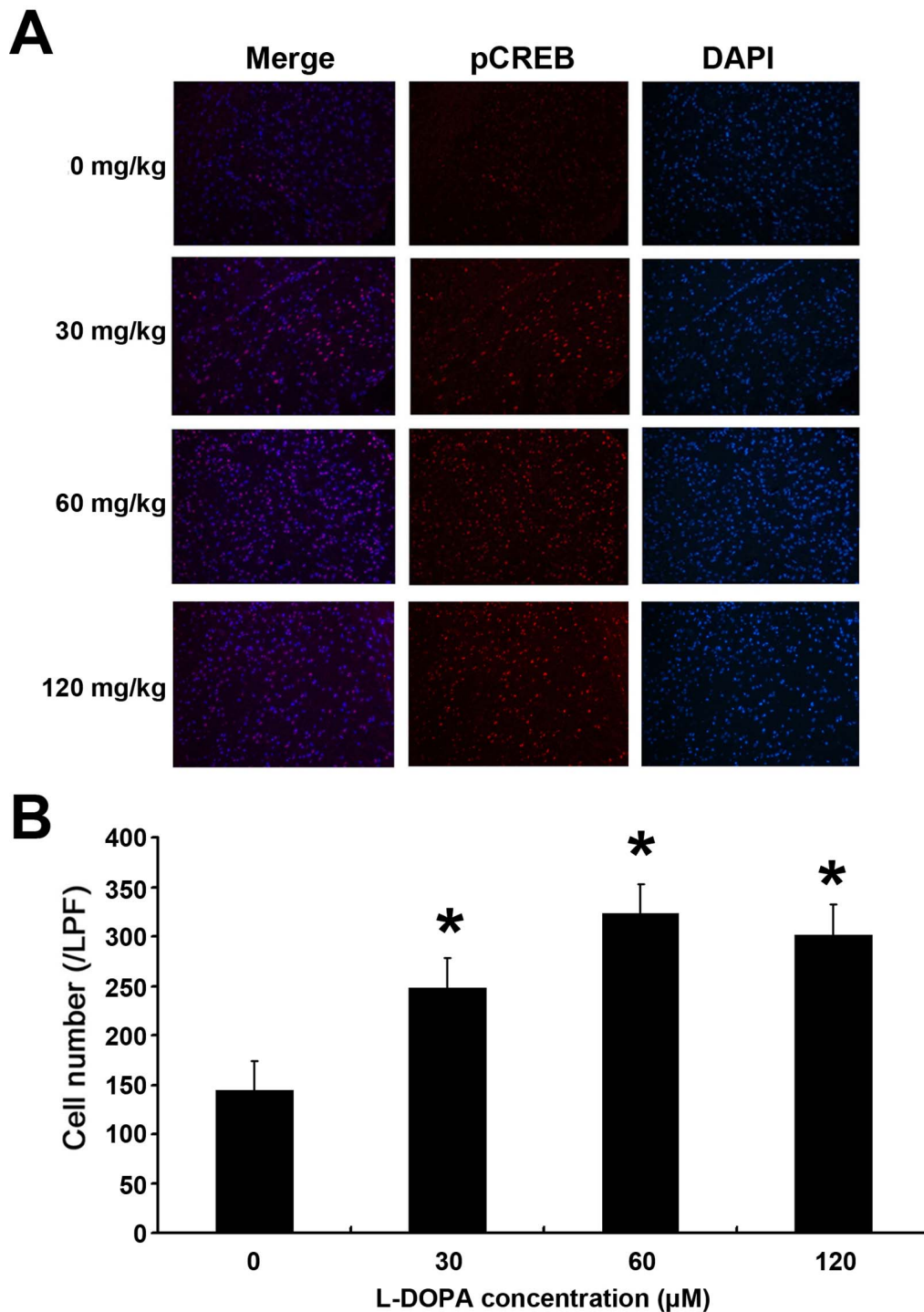


**Figure 6. Effect of L-DOPA on CD39 protein expression in the rat brains.** Rats were treated with L-DOPA once daily for 7 days. The brains were quickly harvested for immunofluorescence staining of CD39 (A). The number of CD39 positive cells ( $n=6$  per group) was determined (B). The number of CD39 positive cells in L-DOPA treated groups was significantly larger than that in CG group. \* $P<0.05$  vs. CG group. doi:10.1371/journal.pone.0095387.g006

( $P>0.05$ ) and  $74.13\pm 21.1\%$  ( $P>0.05$ ), and LDH assay showed that was  $9.68\pm 4.52\%$  ( $P>0.05$ ),  $9.62\pm 3.27\%$  ( $P>0.05$ ),  $11.44\pm 4.44\%$  ( $P>0.05$ ),  $15.98\pm 3.85\%$  ( $P>0.05$ ),  $24.25\pm 3.71\%$  ( $P<0.05$ ),  $33.59\pm 5.09\%$  ( $P<0.01$ ) and  $44.89\pm 4.16\%$  ( $P<0.01$ )

after treatment with L-DOPA at different concentrations. L-DOPA at lower than  $30\ \mu\text{M}$  promoted the growth of PC12 cells and the maximal proliferation was observed when the L-DOPA was  $5$  and  $10\ \mu\text{mol/L}$ , while proliferation remained unchanged





**Figure 7. Effect of L-DOPA on pCREB protein expression in the rat brains.** Rats were treated with L-DOPA once daily for 7 days and the brains were quickly harvested for immunofluorescence staining of pCREB expression (A). The number of pCREB positive cells ( $n=6$  per group) was determined (B). The number of pCREB positive cells in L-DOPA treated groups was markedly larger than that in CG group. \* $P<0.05$  vs. CG group. doi:10.1371/journal.pone.0095387.g007

when the L-DOPA was greater than 30  $\mu\text{M}$ . These findings were consistent with previously reported [3–5]. The change in the growth of these cells was also observed under an optical microscope (Figure 1C). PC12 cells had higher density after treatment with L-DOPA at 1, 5, 10 and 20  $\mu\text{M}$ , while the number of PC12 cells reduced after treatment with L-DOPA at 30  $\mu\text{M}$ .

Detection of ROS showed that the higher the concentration of L-DOPA, the higher the ROS level was (Figure 1D). After NAC treatment, even if the L-DOPA was greater than 30  $\mu\text{M}$ , the cell growth was improved obviously and LDH in the supernatant also decreased significantly (Figure 1A, B). Elevated ROS influences the growth of PC12 cells, while the mechanism underlying the

promoted growth of PC12 cells at low dose L-DOPA treatment remains to be further elucidated.

### Low-dose L-DOPA Pretreatment Protects PC12 Cells from Oxidative Stress, which is Compromised by CD39 Inhibitor

PC12 cells were treated with  $H_2O_2$  to induce oxidative stress (Figure 2C) after pretreatment with low dose L-DOPA, and the cell viability was determined by MTT assay and LDH assay. As compared to untreated groups, the viability was  $172.41 \pm 21.96\%$  ( $P < 0.01$ ),  $186.89 \pm 30.49\%$  ( $P < 0.01$ ),  $169.59 \pm 30.28\%$  ( $P < 0.01$ ) and  $140.89 \pm 23.24\%$  ( $P < 0.01$ ) after L-DOPA pre-treatment (Figure 2A). Meanwhile, LDH content was lower in the L-DOPA pre-treated groups (Figure 2B). In CD39 inhibitor (ARL and H89) pre-treatment group, the viability was  $74.22 \pm 9.71\%$  ( $P < 0.05$ ),  $71.13 \pm 10.03\%$  ( $P < 0.05$ ),  $70.62 \pm 10.89\%$  ( $P < 0.05$ ),  $64.10 \pm 7.27\%$  ( $P < 0.05$ ) and  $62.38 \pm 12.64\%$  ( $P < 0.05$ ),  $65.69 \pm 9.45\%$  ( $P < 0.05$ ),  $57.11 \pm 15.06\%$  ( $P < 0.05$ ) and  $47.71 \pm 15.41\%$  ( $P < 0.05$ ), respectively (Figure 2A). Meanwhile, LDH content stood at the same level when compared with control group (Figure 2B). These results confirmed that low dose L-DOPA pretreatment protected PC12 cells from oxidative stress which was compromised by CD39 inhibitor. Thus, the PKA-CD39 pathway may play an important role in the neuroprotection of L-DOPA.

### L-DOPA Increases CD39 and PCREB Expression

PC12 cells were treated with L-DOPA at different concentrations for 3 days, and the CD39 and PCREB protein expression was measured by immunofluorescence staining and western blot assay. CD39 is a transmembrane protein and pCREB is a nuclear protein. Results showed that fluorescence intensity was higher in the L-DOPA treated groups than in untreated group, showing that CD39 and pCREB expression increased after L-DOPA treatment. (Figure 3A, 4A). Western blot assay showed the same tendency in CD39 and pCREB expression (Figure 3B, 3C, 4B, 4C). The expression of CD39 increased with the increase in the L-DOPA concentration and reached the peak at  $10 \mu M$  L-DOPA. The level of CREB expression was comparable among groups, while pCREB expression also peaked at  $10 \mu M$  L-DOPA.

### L-DOPA Increases CD39 and PCREB Expression in the Rat Brain

Rats were intraperitoneally administered with 120 mg/kg L-DOPA in HstG, 60 mg/kg L-DOPA in HG, 30 mg/kg L-DOPA in LG and solvent in CG group once daily for 7 days. The brains were quickly harvested for western blot assay and immunofluorescence staining was performed to determine the expression of PCREB and CD39 (Figure 5, 6, 7). Western blot assay (Fig. 5A) showed pCREB and CD39 expression was greater in L-DOPA treated groups than in CG ( $126.74 \pm 4\%$ ,  $136.21 \pm 5\%$  and  $131.14 \pm 5\%$ ,  $131.24 \pm 4\%$ ,  $196.72 \pm 6\%$  and  $182.85 \pm 5\%$ , respectively;  $P < 0.05$  vs. CG;  $n = 6$ ; Fig. 5B, 5C). The number of pCREB and CD 39 positive cells in 30 fields per rat ( $n = 6$  per group) was averaged (Figure 6A, 7A). The number of pCREB and CD39 positive cells in L-DOPA treated groups was markedly larger than that in CG ( $144 \pm 14$ ,  $248 \pm 10$ ,  $323 \pm 16$  and  $302 \pm 11$ ;  $124 \pm 11$ ,  $190 \pm 13$ ,  $250 \pm 13$  and  $237 \pm 11$ , respectively;  $P < 0.01$  vs. CG;  $n = 6$ ; Figure 6B, 7B).

## Discussion

Whether L-DOPA is neurotoxic or neuroprotective is still an issue of debate. The plasma concentration of L-DOPA in PD

patients is generally  $5\text{--}50 \mu M$ , and L-DOPA at a physiological low concentration ( $50 \mu M$ ) may nourish and protect the neurons [5]. In addition, L-DOPA may enhance the antitoxic capacity of dopaminergic neurons against certain toxics [6]. Studies have shown that L-DOPA at a low concentration may also increase the survival and number of neuritis of fetal rat midbrain neurons and cortical astrocytes [3,4]. In healthy animals, long-term application of high dose L-DOPA fails to reduce the number of dopaminergic cells, and DA nerve fiber density increases in PD animals [7–9]. Patients who have been misdiagnosed with PD (such as essential tremor or vascular parkinsonism patients) may not develop symptoms of PD after long-term use of L-DOPA, PET does not show the change in L-DOPA level and dopaminergic neuronal injury is also not observed in autopsy of these patients [10]. Neuropathology shows patients receiving L-DOPA treatment have not more substantia nigra abnormalities than those without L-DOPA treatment, and the mortality of untreated patients is three times that of healthy control, while that of treated group is 1.5 times [10]. The ELLDOPA study shows high dose L-DOPA does not accelerate the disease progression, but exerts a protective effect in 361 patients with clinically diagnosed PD in early phase (within 2 years of initial diagnosis and absence of pharmacotherapy) [10]. Thus, the effect of L-DOPA on PD still is needed to be investigated in more studies.

In our experiment, the neuroprotective effect of L-DOPA was investigated in the presence of  $H_2O_2$  induced oxidative stress. PC12 cells were used because they can metabolize dopamine and have typical neuronal characteristics. PC12 cells were treated with L-DOPA at different concentrations. Results showed that L-DOPA at lower than  $30 \mu M$  promoted the growth of PC12 cells. To characterize the role of L-DOPA in oxidative stress, the survival of PC12 cells pretreated with low dose L-DOPA was determined after  $H_2O_2$  treatment. Results demonstrated that low dose L-DOPA protected nerve cells from oxidative stress via up-regulating pCREB and CD39. We postulate that the damage of ROS produced by high dose L-DOPA metabolism overwhelms the L-DOPA induced protection, and thus the cell growth and survival became worse. CD39 is a  $70\text{--}100$  kD transmembrane protein with two transmembrane domains and a large extracellular region [21]. The extracellular domain of CD39 on the endothelial cells is exposed to the blood flow, and can regulate the purine signal transmission and phosphorylation of ATP and ADP into AMP, further together with CD73 turning AMP into adenosine [18]. Thus, CD39 can metabolize ATP and ADP released by activated platelets to reduce the platelet activation and recruitment. In addition, it maintains the blood flow in the absence of prostacyclin and nitric oxide, reducing the risk for thrombosis. CD39 also activates the type II immune response by regulating the expression of cytokines, inducing cell adhesion [22–24] and leukocyte migration [25], which reduces inflammation and regulates the immune function, exerting protective effect on the ischemia-reperfusion injury of the heart and brain [26–33]. Human CD39 gene comprises an open reading frame encoding about 510 amino acids, of which there are six N-glycosylation sites, 11 cysteine residues and two transmembrane domains [21]. Although CD39 is expressed on a variety of cells, including endothelial cells, macrophages and lymphocytes, and is very important for the metabolism of ATP and ADP under stress, the regulation of CD39 expression at molecular level is still poorly understood.

Liao et al. reported that cAMP could phosphorylate CREB Ser133 via the PKA signaling pathway to activate the CD39 transcription after pCREB binds to the promoter region of CD39 [20]. Their results showed that CREB plays an important role in



not only the transcription of CD39, but also the activity of CD39. cAMP analogue (8-bromo-cAMP) is able to remarkably induce CD39 expression (more than 40 times) in macrophages, and raise the CD39 antigenicity and activity significantly according to the platelet aggregation determination. H89 (PKA inhibitor) reduced the 8-bromo-cAMP-induced mRNA expression of CD39 by 98%, and subsequently the protein expression of CD39 decreased. Interaction among PKA, ERK, and CREB/ATF signaling pathways, independently sometime, may be a mechanism underlying the cAMP induced regulation of CD39 transcription.

Repeated administration of L-DOPA triggers a signaling cascade [34–36]. D1-like receptors link to the stimulatory G protein (Gs), which increases the intracellular cAMP. cAMP may induce PKA activation, and in turn the activated PKA phosphorylates the cytoplasmic and nuclear proteins and regulates the ion channel function and gene expression [37–39]. Via a PKA-dependent mechanism, stimulation of D1 subtype will activate the cAMP/PKA/p38MAPK/JNK/ERK signaling pathways [40–44], playing an important role in the phosphorylation [45–49]. The transcriptional activation of CREB depends on its phosphorylation at Ser-133 either directly or indirectly by PKA [16,50–55]. D1 receptors can also influence the CaMK-mediated phosphorylation of CREB [56,57]. Other studies also found the DA-induced alteration of CREB in organotypic slice cultures [58] and alteration of ERK in a dopaminergic cell line and primary DA neurons from rat substantia nigra [59]. After treated with L-DOPA for 3 weeks (twice, daily), the striatal pCREB protein expression and number of positive neurons increased. Intrastriatal

administration of CREB antisense or PKA inhibitor Rp-cAMPS was also found to attenuate the L-DOPA-induced pCREB elevation [60]. Chronic L-DOPA treatment results an increase in the striatal pCREB [57,61–63]. Augmented pCREB expression during chronic L-DOPA treatment is mainly found in the dorsolateral striatum and thus most likely to affect the striatal dopaminergic neurons [64,65]. Other studies concluded that neurons under stress might activate CREB phosphorylation as a protective response [66]. Taken together, above findings indicate that L-DOPA-induced D1 DA receptors activation is an important trigger of MAPK signaling and CREB phosphorylation in the striatal neurons, which plays an important role in promoting neuronal survival and synaptic plasticity [51,67,68].

In general, L-DOPA is able to promote the binding of D1-like receptors to Gs which increases the intracellular cAMP. Under oxidative stress, self-oxidation and enzymatic oxidation of L-DOPA generates ROS, which increases cAMP to protect against oxidative stress. Through cAMP-PKA pathway, CREB (Ser133) phosphorylation increases and the binding of pCREB to CRE of CD39 promoter is enhanced, where the phosphorylated Ser133 works as a bracket for the transcription of CREB-binding protein and its homologous gene P300 to start the gene transcription.

## Author Contributions

Conceived and designed the experiments: XYL YXZ. Performed the experiments: SYZ YXC. Analyzed the data: MF XLZ. Contributed reagents/materials/analysis tools: MF XLZ. Wrote the paper: SYZ YXC.

## References

- Hoyt KR, Reynolds IJ, Hastings TG (1997) Mechanisms of dopamine-induced cell death in cultured rat forebrain neurons: interactions with and differences from glutamate-induced cell death. *Exp Neurol* 143: 269–281.
- Spencer JP, Jenner P, Halliwell B (1995) Superoxide-dependent depletion of reduced glutathione by L-DOPA and dopamine. Relevance to Parkinson's disease. *Neuroreport* 6: 1480–1484.
- Mena MA, Davila V, Sulzer D (1997) Neurotrophic effects of L-DOPA in postnatal midbrain dopamine neuron/cortical astrocyte cocultures. *J Neurochem* 69: 1398–1408.
- Pardo B, Mena MA, Casarejos MJ, Paino CL, De Yébenes JG (1995) Toxic effects of L-DOPA on mesencephalic cell cultures: protection with antioxidants. *Brain Res* 682: 133–143.
- Langeveld CH, Jongenelen CA, Schepens E, Stoof JC, Bast A, et al. (1995) Cultured rat striatal and cortical astrocytes protect mesencephalic dopaminergic neurons against hydrogen peroxide toxicity independent of their effect on neuronal development. *Neurosci Lett* 192: 13–16.
- Han SK, Mytilineou C, Cohen G (1996) L-DOPA up-regulates glutathione and protects mesencephalic cultures against oxidative stress. *J Neurochem* 66: 501–510.
- Olanow CW, Agid Y, Mizuno Y, Albanese A, Bonuccelli U, et al. (2004) Levodopa in the treatment of Parkinson's disease: current controversies. *Mov Disord* 19: 997–1005.
- Shin JY, Park HJ, Ahn YH, Lee PH (2009) Neuroprotective effect of L-dopa on dopaminergic neurons is comparable to pramipexol in MPTP-treated animal model of Parkinson's disease: a direct comparison study. *J Neurochem* 111: 1042–1050.
- Lyras L, Zeng BY, McKenzie G, Pearce RK, Halliwell B, et al. (2002) Chronic high dose L-DOPA alone or in combination with the COMT inhibitor entacapone does not increase oxidative damage or impair the function of the nigro-striatal pathway in normal cynomolgus monkeys. *J Neural Transm* 109: 53–67.
- Fahn S, Oakes D, Shoulson I, Kieburtz K, Rudolph A, et al. (2004) Levodopa and the progression of Parkinson's disease. *N Engl J Med* 351: 2498–2508.
- Holgado-Madruga M, Moscatello DK, Emlet DR, Dieterich R, Wong AJ (1997) Grb2-associated binder-1 mediates phosphatidylinositol 3-kinase activation and the promotion of cell survival by nerve growth factor. *Proc Natl Acad Sci U S A* 94: 12419–12424.
- Montminy MR, Sevarino KA, Wagner JA, Mandel G, Goodman RH (1986) Identification of a cyclic-AMP-responsive element within the rat somatostatin gene. *Proc Natl Acad Sci U S A* 83: 6682–6686.
- Shao J, Evers BM, Sheng H (2004) Prostaglandin E2 synergistically enhances receptor tyrosine kinase-dependent signaling system in colon cancer cells. *J Biol Chem* 279: 14287–14293.
- Gee K, Angel JB, Mishra S, Blahoiu MA, Kumar A (2007) IL-10 regulation by HIV-Tat in primary human monocytic cells: involvement of calmodulin/calmodulin-dependent protein kinase-activated p38 MAPK and Sp-1 and CREB-1 transcription factors. *J Immunol* 178: 798–807.
- Wang H, Hu Y, Tsien JZ (2006) Molecular and systems mechanisms of memory consolidation and storage. *Prog Neurobiol* 79: 123–135.
- Barco A, Alarcon JM, Kandel ER (2002) Expression of constitutively active CREB protein facilitates the late phase of long-term potentiation by enhancing synaptic capture. *Cell* 108: 689–703.
- Hashimoto N, Matsumoto T, Mabe H, Hashitani T, Nishino H (1994) Dopamine has inhibitory and accelerating effects on ischemia-induced neuronal cell damage in the rat striatum. *Brain Res Bull* 33: 281–288.
- Zimmermann H (1992) 5'-Nucleotidase: molecular structure and functional aspects. *Biochem J* 285 (Pt 2): 345–365.
- Montminy M (1997) Transcriptional regulation by cyclic AMP. *Annu Rev Biochem* 66: 807–822.
- Liao H, Hyman MC, Baek AE, Fukase K, Pinsky DJ (2010) cAMP/CREB-mediated transcriptional regulation of ectonucleoside triphosphate diphosphohydrolase 1 (CD39) expression. *J Biol Chem* 285: 14791–14805.
- Maliszewski CR, Delespese GJ, Schoenborn MA, Armitage RJ, Fanslow WC, et al. (1994) The CD39 lymphoid cell activation antigen. Molecular cloning and structural characterization. *J Immunol* 153: 3574–3583.
- Mizumoto N, Kumamoto T, Robson SC, Sevigny J, Matsue H, et al. (2002) CD39 is the dominant Langerhans cell-associated ecto-NTPDase: modulatory roles in inflammation and immune responsiveness. *Nat Med* 8: 358–365.
- Langston HP, Ke Y, Gewirtz AT, Dombrowski KE, Kapp JA (2003) Secretion of IL-2 and IFN-gamma, but not IL-4, by antigen-specific T cells requires extracellular ATP. *J Immunol* 170: 2962–2970.
- Dombrowski KE, Ke Y, Brewer KA, Kapp JA (1998) Ecto-ATPase: an activation marker necessary for effector cell function. *Immunol Rev* 161: 111–118.
- Hyman MC, Petrovic-Djergovic D, Visovatti SH, Liao H, Yanamadala S, et al. (2009) Self-regulation of inflammatory cell trafficking in mice by the leukocyte surface enzyme CD39. *J Clin Invest* 119: 1136–1149.
- Marcus AJ, Brockman MJ, Drosopoulos JH, Islam N, Pinsky DJ, et al. (2003) Metabolic control of excessive extracellular nucleotide accumulation by CD39/ecto-nucleotidase-1: implications for ischemic vascular diseases. *J Pharmacol Exp Ther* 305: 9–16.
- Marcus AJ, Brockman MJ, Drosopoulos JH, Islam N, Pinsky DJ, et al. (2003) Heterologous cell-cell interactions: thromboregulation, cerebroprotection and cardioprotection by CD39 (NTPDase-1). *J Thromb Haemost* 1: 2497–2509.
- Atkinson B, Dwyer K, Enjyoji K, Robson SC (2006) Ecto-nucleotidases of the CD39/NTPDase family modulate platelet activation and thrombus formation: Potential as therapeutic targets. *Blood Cells Mol Dis* 36: 217–222.

29. Gerlo S, Verdood P, Hooghe-Peters EL, Kooijman R (2006) Multiple cAMP-induced signaling cascades regulate prolactin expression in T cells. *Cell Mol Life Sci* 63: 92–99.
30. Kohler D, Eckle T, Faigle M, Grenz A, Mittelbronn M, et al. (2007) CD39/ectonucleoside triphosphate diphosphohydrolase 1 provides myocardial protection during cardiac ischemia/reperfusion injury. *Circulation* 116: 1784–1794.
31. Marcus AJ, Brockman MJ, Drosopoulos JH, Pinsky DJ, Islam N, et al. (2001) Inhibition of platelet recruitment by endothelial cell CD39/ecto-ADPase: significance for occlusive vascular diseases. *Ital Heart J* 2: 824–830.
32. Pinsky DJ, Brockman MJ, Peschon JJ, Stocking KL, Fujita T, et al. (2002) Elucidation of the thromboregulatory role of CD39/ectoapyrase in the ischemic brain. *J Clin Invest* 109: 1031–1040.
33. Marcus AJ, Brockman MJ, Drosopoulos JH, Olson KE, Islam N, et al. (2005) Role of CD39 (NTPDase-1) in thromboregulation, cerebroprotection, and cardioprotection. *Semin Thromb Hemost* 31: 234–246.
34. Gerfen CR (2000) Dopamine-mediated gene regulation in models of Parkinson's disease. *Ann Neurol* 47: S42–50; discussion S50–42.
35. Calon F, Birdi S, Rajput AH, Hornykiewicz O, Bedard PJ, et al. (2002) Increase of preproenkephalin mRNA levels in the putamen of Parkinson disease patients with levodopa-induced dyskinesias. *J Neuropathol Exp Neurol* 61: 186–196.
36. Calon F, Hadj Tahar A, Blanchet PJ, Morissette M, Grondin R, et al. (2000) Dopamine-receptor stimulation: biobehavioral and biochemical consequences. *Trends Neurosci* 23: S92–100.
37. Missale C, Nash SR, Robinson SW, Jaber M, Caron MG (1998) Dopamine receptors: from structure to function. *Physiol Rev* 78: 189–225.
38. Jackson DM, Westlind-Danielsson A (1994) Dopamine receptors: molecular biology, biochemistry and behavioural aspects. *Pharmacol Ther* 64: 291–370.
39. Robinson SW, Caron MG (1997) Selective inhibition of adenylyl cyclase type V by the dopamine D3 receptor. *Mol Pharmacol* 52: 508–514.
40. Maudsley S, Martin B, Luttrell LM (2005) The origins of diversity and specificity in G protein-coupled receptor signaling. *J Pharmacol Exp Ther* 314: 485–494.
41. Thomas GM, Hagan RL (2004) MAPK cascade signalling and synaptic plasticity. *Nat Rev Neurosci* 5: 173–183.
42. Zhen X, Uryu K, Wang HY, Friedman E (1998) D1 dopamine receptor agonists mediate activation of p38 mitogen-activated protein kinase and c-Jun amino-terminal kinase by a protein kinase A-dependent mechanism in SK-N-MC human neuroblastoma cells. *Mol Pharmacol* 54: 453–458.
43. Rogue P, Malviya AN (1994) Regulation of signalling pathways to the nucleus by dopaminergic receptors. *Cell Signal* 6: 725–733.
44. Oh JD, Del Dotto P, Chase TN (1997) Protein kinase A inhibitor attenuates levodopa-induced motor response alterations in the hemi-parkinsonian rat. *Neurosci Lett* 228: 5–8.
45. Chase TN, Oh JD (2000) Striatal dopamine- and glutamate-mediated dysregulation in experimental parkinsonism. *Trends Neurosci* 23: S86–91.
46. Kim DS, Palmiter RD, Cummins A, Gerfen CR (2006) Reversal of supersensitive striatal dopamine D1 receptor signaling and extracellular signal-regulated kinase activity in dopamine-deficient mice. *Neuroscience* 137: 1381–1388.
47. Brown P, Gerfen CR (2006) Plasticity within striatal direct pathway neurons after neonatal dopamine depletion is mediated through a novel functional coupling of serotonin 5-HT<sub>2</sub> receptors to the ERK 1/2 map kinase pathway. *J Comp Neurol* 498: 415–430.
48. Papadeas ST, Blake BL, Knapp DJ, Breese GR (2004) Sustained extracellular signal-regulated kinase 1/2 phosphorylation in neonate 6-hydroxydopamine-lesioned rats after repeated D1-dopamine receptor agonist administration: implications for NMDA receptor involvement. *J Neurosci* 24: 5863–5876.
49. Gerfen CR, Miyachi S, Paletzki R, Brown P (2002) D1 dopamine receptor supersensitivity in the dopamine-depleted striatum results from a switch in the regulation of ERK1/2/MAP kinase. *J Neurosci* 22: 5042–5054.
50. Zhao W, Huang Y, Liu Z, Cao BB, Peng YP, et al. (2013) Dopamine receptors modulate cytotoxicity of natural killer cells via cAMP-PKA-CREB signaling pathway. *PLoS One* 8: e65860.
51. Carlezon WA Jr, Duman RS, Nestler EJ (2005) The many faces of CREB. *Trends Neurosci* 28: 436–445.
52. Dragunow M (2004) CREB and neurodegeneration. *Front Biosci* 9: 100–103.
53. Riccio A, Ginty DD (2002) What a privilege to reside at the synapse: NMDA receptor signaling to CREB. *Nat Neurosci* 5: 389–390.
54. Barth AL, McKenna M, Glazewski S, Hill P, Impey S, et al. (2000) Upregulation of cAMP response element-mediated gene expression during experience-dependent plasticity in adult neocortex. *J Neurosci* 20: 4206–4216.
55. Lonze BE, Ginty DD (2002) Function and regulation of CREB family transcription factors in the nervous system. *Neuron* 35: 605–623.
56. Impey S, Fong AL, Wang Y, Cardinaux JR, Fass DM, et al. (2002) Phosphorylation of CBP mediates transcriptional activation by neural activity and CaM kinase IV. *Neuron* 34: 235–244.
57. Calabresi P, Gubellini P, Centonze D, Picconi B, Bernardi G, et al. (2000) Dopamine and cAMP-regulated phosphoprotein 32 kDa controls both striatal long-term depression and long-term potentiation, opposing forms of synaptic plasticity. *J Neurosci* 20: 8443–8451.
58. Liu FC, Graybiel AM (1998) Dopamine and calcium signal interactions in the developing striatum: control by kinetics of CREB phosphorylation. *Adv Pharmacol* 42: 682–686.
59. Cavanaugh JE, Jaumotte JD, Lakoski JM, Zigmond MJ (2006) Neuroprotective role of ERK1/2 and ERK5 in a dopaminergic cell line under basal conditions and in response to oxidative stress. *J Neurosci Res* 84: 1367–1375.
60. Oh JD, Chartisathian K, Ahmed SM, Chase TN (2003) Cyclic AMP response element binding protein phosphorylation and persistent expression of levodopa-induced response alterations in unilateral nigrostriatal 6-OHDA lesioned rats. *J Neurosci Res* 72: 768–780.
61. Viola H, Furman M, Izquierdo LA, Alonso M, Barros DM, et al. (2000) Phosphorylated cAMP response element-binding protein as a molecular marker of memory processing in rat hippocampus: effect of novelty. *J Neurosci* 20: RC112.
62. Silva AJ, Kogan JH, Frankland PW, Kida S (1998) CREB and memory. *Annu Rev Neurosci* 21: 127–148.
63. Pittenger C, Kandel E (1998) A genetic switch for long-term memory. *C R Acad Sci III* 321: 91–96.
64. Centonze D, Picconi B, Gubellini P, Bernardi G, Calabresi P (2001) Dopaminergic control of synaptic plasticity in the dorsal striatum. *Eur J Neurosci* 13: 1071–1077.
65. Cenci MA, Tranberg A, Andersson M, Hilbertson A (1999) Changes in the regional and compartmental distribution of FosB- and JunB-like immunoreactivity induced in the dopamine-denervated rat striatum by acute or chronic L-dopa treatment. *Neuroscience* 94: 515–527.
66. Mabuchi T, Kitagawa K, Kuwabara K, Takasawa K, Ohtsuki T, et al. (2001) Phosphorylation of cAMP response element-binding protein in hippocampal neurons as a protective response after exposure to glutamate in vitro and ischemia in vivo. *J Neurosci* 21: 9204–9213.
67. Arnauld E, Arsaut J, Demotes-Mainard J (1998) Conditional coupling of striatal dopamine D1 receptor to transcription factors: ontogenic and regional differences in CREB activation. *Brain Res Mol Brain Res* 60: 127–132.
68. Liu FC, Graybiel AM (1998) Region-dependent dynamics of cAMP response element-binding protein phosphorylation in the basal ganglia. *Proc Natl Acad Sci U S A* 95: 4708–4713.69. L'evesque SA, Lavoie E'G, Lecka J, Bigonnesse F & S' evigny J (2007) Specificity of the ecto-ATPase inhibitor ARL 67156 on human and mouse ectonucleotidases. *Brit J Pharmacol* 152: 141–150.