

Ecology and Caudal Skeletal Morphology in Birds: The Convergent Evolution of Pygostyle Shape in Underwater Foraging Taxa

Ryan N. Felice^{1,2*}, Patrick M. O'Connor^{2,3}

1 Department of Biological Sciences, Ohio University, Athens, Ohio, United States of America, **2** Ohio Center for Ecology and Evolutionary Studies, Ohio University, Athens, Ohio, United States of America, **3** Department of Biomedical Sciences, Ohio University Heritage College of Osteopathic Medicine, Athens, Ohio, United States of America

Abstract

Birds exhibit a specialized tail that serves as an integral part of the flight apparatus, supplementing the role of the wings in facilitating high performance aerial locomotion. The evolution of this function for the tail contributed to the diversification of birds by allowing them to utilize a wider range of flight behaviors and thus exploit a greater range of ecological niches. The shape of the wings and the tail feathers influence the aerodynamic properties of a bird. Accordingly, taxa that habitually utilize different flight behaviors are characterized by different flight apparatus morphologies. This study explores whether differences in flight behavior are also associated with variation in caudal vertebra and pygostyle morphology. Details of the tail skeleton were characterized in 51 Aequornithes and Charadriiformes species. Free caudal vertebral morphology was measured using linear metrics. Variation in pygostyle morphology was characterized using Elliptical Fourier Analysis, a geometric morphometric method for the analysis of outline shapes. Each taxon was categorized based on flight style (flap, flap-glide, dynamic soar, etc.) and foraging style (aerial, terrestrial, plunge dive, etc.). Phylogenetic MANOVAs and Flexible Discriminant Analyses were used to test whether caudal skeletal morphology can be used to predict flight behavior. Foraging style groups differ significantly in pygostyle shape, and pygostyle shape predicts foraging style with less than 4% misclassification error. Four distinct lineages of underwater foraging birds exhibit an elongate, straight pygostyle, whereas aerial and terrestrial birds are characterized by a short, dorsally deflected pygostyle. Convergent evolution of a common pygostyle phenotype in diving birds suggests that this morphology is related to the mechanical demands of using the tail as a rudder during underwater foraging. Thus, distinct locomotor behaviors influence not only feather attributes but also the underlying caudal skeleton, reinforcing the importance of the entire caudal locomotor module in avian ecological diversification.

Citation: Felice RN, O'Connor PM (2014) Ecology and Caudal Skeletal Morphology in Birds: The Convergent Evolution of Pygostyle Shape in Underwater Foraging Taxa. PLoS ONE 9(2): e89737. doi:10.1371/journal.pone.0089737

Editor: Peter Dodson, University of Pennsylvania, United States of America

Received: October 4, 2013; **Accepted:** January 23, 2014; **Published:** February 26, 2014

Copyright: © 2014 Felice, O'Connor. This is an open-access article distributed under the terms of the Creative Commons Attribution License, which permits unrestricted use, distribution, and reproduction in any medium, provided the original author and source are credited.

Funding: Funding was provided by the Sigma Xi Grant-in-Aid of Research, ID number G20130315163195, Ohio University Graduate Student Senate Original Work Grant, and Ohio University Student Enhancement Award. RNF is supported by the Department of Biological Sciences, and RNF and PMO are supported by the Department of Biomedical Sciences and the Heritage College of Osteopathic Medicine at Ohio University. The funders had no role in study design, data collection and analysis, decision to publish, or preparation of the manuscript.

Competing Interests: The authors have declared that no competing interests exist.

* E-mail: rf273509@ohio.edu

Introduction

Understanding the processes that generate phenotypic diversity is an important goal in evolutionary biology [1,2]. The evolutionary diversification of phenotypes can be influenced by many factors, including natural selection, sexual selection, biomechanical constraints, developmental processes, and trait interactions [2–8]. By testing hypotheses regarding the patterns and causes of morphological diversity in highly variable structures, we may better characterize the role that such variation has played in the diversification of clades [9–15].

The avian tail is one such highly variable structure, with modern birds using the tail as an integral component of the flight apparatus [16–18]. The role of the tail in flight is to supplement the lift produced by the wings during slow flight, reduce whole-body drag, and both stabilize and maneuver the bird during flight [19–22]. Bird tail morphology is specialized for its function as part of the locomotor apparatus and consists of an articulated fan of tail

feathers, separate muscular systems for tail movements and tail fanning, and a modified, shortened tail skeleton [18]. The avian caudal skeleton consists of several (five to nine) free caudal vertebrae (Fig. 1). The terminal element of the caudal skeleton is the pygostyle, represented by a single, co-ossified unit consisting of the fused caudal-most vertebrae, ranging from three to seven in number [18,23]. This serves as an attachment site for caudal musculature, tail feathers, and as an anchor for the tail fanning mechanism itself [16,18].

The drivers of tail feather (rectrix: plural, rectrices) diversity are somewhat well understood. Tail fan shape determines the functional and aerodynamic properties of the tail [24,25]. Not surprisingly then, tail-fan shape diversity reflects differences in ecology. As examples, birds that live in dense woodland environments benefit from the increased maneuverability granted by a long tail fan [22], whereas those that capture their prey in the air generally exhibit a deeply forked tail that increases agility [22]. High-speed fliers often have a shortened tail fan that reduces drag

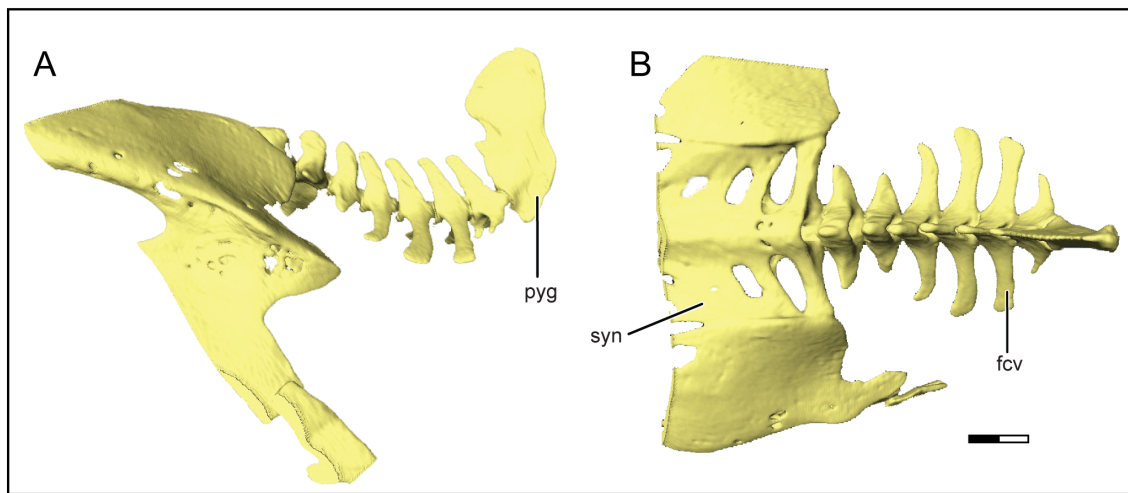


Figure 1. Avian caudal skeleton in left lateral (A) and dorsal (B) views. Abbreviations: fcv, free caudal vertebra; pyg, pygostyle; syn, synsacrum. Scale bar equals 5 mm.

doi:10.1371/journal.pone.0089737.g001

and thus increases flight efficiency, similar to the situation observed in long distance migrants [22,26].

Tail-fan shape also serves non-aerodynamic functions. In some species, males exhibit an elaborate tail fan that deviates from the “optimal” shape predicted from aerodynamic models [27–31]. For example, male red-collared widowbirds in breeding plumage have a tail five times longer than that of females [32]. Sexually dimorphic rectrices like these are honest indicators of male quality and have been shown to evolve as a result of female preference [32,33]. Such ornaments have evolved in numerous clades despite being energetically and aerodynamically costly [27,32]. Thus, tail-fan phenotypic diversity is shaped not only by natural selection for increased flight performance, but also by sexual selection [27].

In contrast to rectricular diversity, drivers of caudal skeletal diversity are poorly understood. The degree of morphological variation of the free caudal vertebrae and the pygostyle has long been recognized [34–39]. There is substantial interspecific variation in the number and form of the free caudal vertebrae in addition to the shape of the pygostyle (Fig. 2). However, little comparative consideration of caudal skeletal structure and function has been undertaken, with the exception of a few clades with highly specialized tails. For example, falconids and some hummingbirds have paired accessory pygostyle elements just ventral to the pygostyle. Accessory pygostyle bones are associated with the depressor caudae musculature [39]. These structures are hypothesized to have evolved to accommodate stresses on the tail during rapid maneuvering and braking in these highly aerial clades [39]. Woodpeckers (Picidae) are also noted for their derived caudal skeletal structure and function. Extremely arboreal woodpeckers use the tail as a prop for support during vertical climbing. The pygostyle of woodpeckers has a laterally expanded ventral surface (discus pygostyli) that increases the surface area for the attachment of both the rectrices and caudal musculature. The discus pygostyli is more expanded in species that use the tail as a prop more frequently (e.g., species that spend a considerable proportion of time utilizing the vertical or near-vertical components of the arboreal environment) and, as such, this derived caudal skeletal morphology has been interpreted as an adaptation for the unique function of the tail in woodpeckers [38,40,41].

The specialized caudal skeletal morphology in Falconidae and Picidae suggests that variation in caudal skeletal anatomy, like

rectricular anatomy, likely evolves in response to variation in tail function. To date, there has been no broad comparative investigation of structure-function relationships in the avian caudal skeleton. Variation in forelimb (wing) skeletal morphology is strongly linked to flight style [42,43]. For example, in Pelecaniformes, species that utilize different flight styles (e.g., flap, flap-glide, dynamic soar, static soar) are characterized by different forelimb skeletal anatomy. The length and diameter of the carpometacarpus (the forelimb element that supports the primary flight feathers of the wing) vary among functional groups, reflecting the different biomechanical demands of each flight style [43]. Likewise, hind limb morphology reflects aspects of ecology and locomotor behavior. For example, foot-propelled diving birds exhibit an enlarged area of attachment (i.e., the cnemial crest) for knee extensor musculature that functions to both stabilize the knee joint and produce powerful knee extension during swimming [44]. More generally, hind limb proportions can be used to discriminate among habitat types (e.g., arboreal, wading, swimming, terrestrial) with some confidence, suggesting that pelvic limb variation is influenced by differences in the locomotor demands of each substrate type [45]. The present study investigates the degree to which the avian caudal skeleton, like components of the appendicular skeleton, reflects differences in locomotor behavior.

Given that forelimb and hind limb skeletal anatomy differs among functional groups within birds, does caudal skeletal anatomy also exhibit clear structure-function relationships? As a framing statement then, we predict that birds that utilize different foraging strategies (e.g., aerial, terrestrial, pursuit diving) or flight styles (e.g., flap, soar, flap-glide) are characterized by variable caudal skeletal morphology that reflects this function. We examine this working hypothesis in a phylogenetic comparative context using morphometric data derived from both the free caudal vertebrae and the pygostyle and assess their relationships with both foraging and locomotor characteristics.

Materials and Methods

Taxon Sampling

Morphometric data were collected from 158 specimens representing a total of 51 species (35 genera, see Supplementary Table S1). Taxa were sampled primarily from the diverse

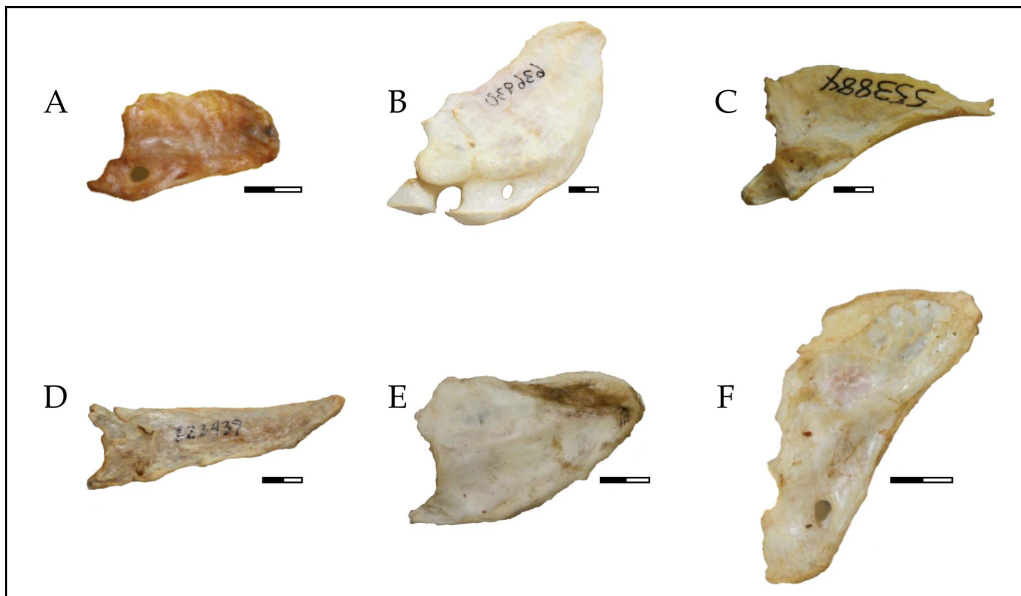


Figure 2. Pygostyle diversity. (A) Northern Fulmar (*Fulmaris glacialis* – AMNH 20697), (B) American White Pelican (*Pelecanus erythrorhynchos* – USNM 535930), (C) Great Cormorant (*Phalacrocorax carbo* – USNM 553884), (D) Adélie Penguin (*Pygoscelis adeliae* – AMNH 623439), (E) Common Loon (*Gavia immer* – FMNH 444970), and (F) Great Frigatebird (*Fregata minor* – FMNH 339432). Scale bar equals 5 mm. doi:10.1371/journal.pone.0089737.g002

waterbird assemblage, often referred to as the “Aequornithes” [46,47]. Waterbirds include Ciconiiformes (storks), Gaviiformes (loons), Pelecaniformes (pelicans, cormorants, and allies), Procellariiformes (albatrosses and petrels), and Sphenisciformes (penguins) [46,47]. Although the monophyly of this clade has been contested [48,49], it was chosen as a focal group for several reasons. First, Aequornithes is among the most diverse avian groups in terms of morphology and body size range [47,50]. Second, diversity in flight behavior and foraging behavior within this clade is well categorized [51–57]. Finally, taxa were sampled primarily from the waterbird assemblage because unlike many other neornithine clades, there is minimal-to-no sexual dimorphism of the tail feathers (rectrices) within the group [58]. Even taxa with elaborate rectrices, such as tropicbirds, are sexually monomorphic for this trait [59]. As such, differences in caudal skeletal morphology between males and females are not expected to influence the analyses conducted herein. In addition, six of the 51 taxa are not waterbirds but members of the somewhat distantly related Charadriiformes (shorebirds: *Larus argentatus*, *Stercorarius parasiticus*, *Fratercula cirrhata*, *Uria aalge*, *Cephus columba*, *Ibidorhyncha struthersii*). These taxa are ecologically convergent with some waterbirds (e.g., alcids and penguins are both marine wing-propelled divers) and thus represent a useful comparison to waterbirds for understanding the correlated evolution of form and function.

In order to explore the relationship between caudal skeletal morphology and flight behavior, each taxon was assigned to both a flight style group and a foraging style group. These categorizations are based on published observations and other comparative ecomorphology studies [14,43,52,55,60–66]. The flight style categories were chosen as Flap, Flap-Glide, Dynamic Soar, Static Soar, Wing-Propelled Flightless and Foot-Propelled Flightless. Taxa were placed in one of five foraging style groups: Aerial, Terrestrial, Plunge Dive, Foot-Propelled Pursuit Dive, and Wing-Propelled Pursuit Dive. The aerial foraging group contains any taxon that habitually utilizes airborne foraging techniques

including hawking, dipping, pattering, and kleptoparasitism. See Table S1 for both flight-style and foraging-style assignments.

Skeletal Morphology and Analytical Approaches

In order to fully characterize caudal skeletal morphology, two datasets were collected. First, free caudal vertebral morphology was quantified using linear measurements. The following metrics were collected: centrum craniocaudal length, centrum width, centrum height, transverse process craniocaudal length, transverse process width, spinous process craniocaudal length, spinous process width, spinous process height, ventral process craniocaudal length, ventral process width, ventral process height (Fig. 3). These metrics were collected at three serial positions within the caudal vertebral series. The first (i.e. post-synsacral) free caudal vertebra, the vertebra halfway along the length of the caudal series, and the last (i.e. propygoistylar) free caudal vertebra. For individuals with an even number of free caudal vertebrae, the two middle vertebrae were measured and averaged. In order to take into account the effect of body size, the geometric mean of five additional measurements was used as a proxy for body size: sternal length, sternal width, height of sternal keel, synsacral length, and femur length [43,67,68]. Specimens and their institutional identification numbers are listed in Table S1. Linear measurements of free caudal vertebrae and body size proxies are provided in Table S2, averaged by species. A phylogenetic least-squares regression was conducted to correct raw measurements for body size, with the species’ means of the residuals used as variables for subsequent analyses [69,70]. All linear measurements were obtained using digital calipers (Fowler digital calipers, Fred V. Fowler Company, Inc., Auburndale, MA).

The second dataset characterizes the morphology of the pygostyle using geometric morphometrics. Given that the pygostyle is irregularly shaped (Fig. 1, 2), laterally compressed, and lacks explicitly defined homologous landmarks, Elliptical Fourier Analysis (EFA) was used to quantify morphological

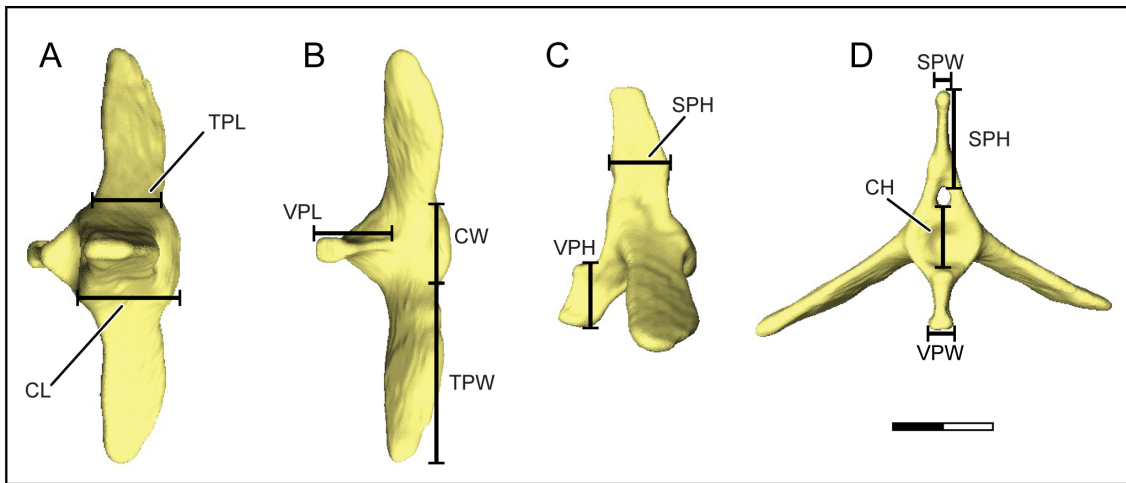


Figure 3. Free caudal vertebra in dorsal (A), ventral (B), left lateral (C), and anterior (D) views. Skeletal metrics collected: Centrum length (CL), centrum width (CW), centrum height (CH), transverse process length (TPL), transverse process width (TPW), spinous process length (SPL), spinous process width (SPW), spinous process height (SPH), ventral process length (VPL), ventral process width (VPW), ventral process height (VPH). Scale bar equals 2 mm.

doi:10.1371/journal.pone.0089737.g003

variation in this structure. EFA is an outline analysis method commonly used on landmark-poor outline shapes [71–75].

Fourier analysis utilizes a digitized outline of a shape consisting of a series of x and y coordinates for each pixel around the contour of a given shape. Separate Fourier decompositions are carried out for the change in the sequences of x- and y- coordinates around the perimeter. The result is a set of harmonically related (sine and cosine) equations, with each one referred to as a harmonic. For each harmonic, the sine and cosine equations describe the shape of an ellipse [71,72]. Taken together, many harmonics may be used to describe more and more complex shapes (Fig. 4). The total number of variables (Fourier descriptors) is $4n$, where n is the number of harmonics [71]. As with traditional, landmark based geometric morphometrics, the effects of size, position, and rotation must be removed such that only shape information remains. This is accomplished by standardizing Elliptical Fourier Descriptors by the first harmonic of each specimen. The resulting shape variables are referred to as Normalized Elliptical Fourier (NEF) descriptors [71,72,76]. This normalization process also reduces the number of variables to $4n-3$. NEF coefficients can then be used as variables in multivariate statistical analyses.

In order to conduct the EFA, each specimen (Table S1) was photographed in lateral view (Fig. 2). Pygostyle outlines were digitized, Fourier transformed, and normalized using SHAPE v.

1.3 [77]. In order to remove superfluous variables from the dataset, the number of harmonics to retain was determined using the Fourier power method [71,76]. For a given harmonic, n , Fourier power is calculated as

$$power = \frac{A_n^2 + B_n^2 + C_n^2 + D_n^2}{2}$$

The number of harmonics retained is determined by the number required to obtain 99% of the cumulative power [71]. For the 160 pygostyle specimens photographed, eight harmonics comprise 99% of the cumulative power (Momocs R package, [78]). For each species, harmonic descriptors were averaged, resulting in 51 observations (species) and 37 variables (NEF descriptors).

Phylogenetic Signal

Taxa in interspecific comparative studies cannot be treated as independent data points in statistical analyses because the phylogenetic relatedness of organisms introduces a degree of non-independence [79,80]. The effect of phylogeny on caudal morphology was first quantified and then formally taken into account as part of each statistical approach.

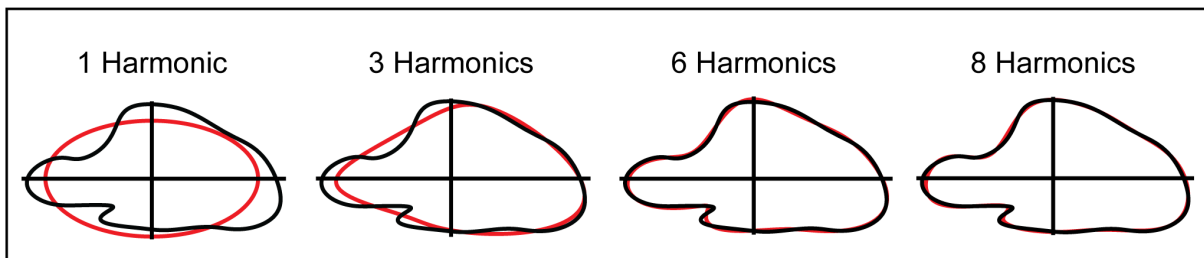


Figure 4. Outline reconstruction using Elliptical Fourier Descriptors. Black contours represent the original outline shape of the pygostyle of *Phoebeastria immutabilis*. Red contours represented the reconstructed shape using the corresponding number of harmonics. Increasing the number of harmonics increases the detail of the reconstructed shape and the accuracy with which it approximates the true shape.

doi:10.1371/journal.pone.0089737.g004

For both the free caudal vertebrae and pygostyle datasets, phylogenetic signal was quantified using Pagel's λ [81]. Pagel's λ is a tree transformation parameter that measures the degree to which evolutionary relationships predict the observed patterns of variation/similarity in the data. This parameter varies between $\lambda = 0$ and $\lambda = 1$. If $\lambda = 0$, phylogenetic relatedness has no influence on the data and the tree can be transformed into a star phylogeny (equivalent to using ahistorical comparative methods). If $\lambda = 1$ the data fit a Brownian motion model of evolution given the original untransformed branch lengths. The optimal lambda for each dataset was calculated using the phytools R package [69,82].

For the EFA dataset, an additional metric of phylogenetic signal was used. Calculating an optimal λ for a given dataset assumes that the data are multivariate. Shape data are in fact a single multidimensional character, and as such, is better served by calculating phylogenetic signal using the alternative 'consistency index' [83]. This metric varies from 0 to 1, where 0 = high homoplasy (low phylogenetic signal) and 1 = low homoplasy (high phylogenetic signal). The index is calculated using a permutation test. First, the amount of morphological change along the branches of the tree is calculated. Next, the shape data are shuffled among the tips of the tree and the amount of shape change is recalculated and compared to the observed value. If phylogeny has little effect, swapping the data among the tips will be equally likely to increase or decrease the amount of total tree length, and thus, on average not impart a noticeable effect. Conversely, if the effect of phylogeny is high, shuffling tip data are predicted to increase amount of change along the tree [83]. The consistency index for pygostyle shape was calculated using the geomorph package in R [84].

The higher-level phylogenetic relationships among the members of the "waterbird" and shorebird clades are somewhat contested [46–49,85]. In order to take into account this phylogenetic uncertainty, each analysis was conducted using two alternative topologies, one using a "backbone" based on Hackett et al. [46] and the other using a "backbone" from Ericson et al. [49]. The former topology resolves *Aequornithes* as a monophyletic group, whereas the latter does not. The two phylogenetic hypotheses also differ in their placement of *Phaethontidae*. For each backbone topology, a sample of 5000 trees was obtained from the posterior distribution of trees on <http://www.birdtree.org> [48]. A Maximum Clade-Credibility (MCC) tree for each topology was produced using TreeAnnotator v1.6.2 [86]. The two MCC trees were used for all comparative analyses.

Comparative Analyses

The two primary goals of the analyses conducted herein are to determine whether birds belonging to different ecological groups are characterized by different caudal skeletal morphology, and if so, identify which components of caudal skeletal morphology best explain differences among the groups. Phylogenetic MANOVAs (geiger R package; [87,88]) were used to test for significant differences in morphology among functional groups. For the free caudal vertebrae dataset, separate tests were conducted for the first caudal vertebra, mid-caudal vertebra, and propyogostylar vertebra. For the pygostyle shape dataset, the dimensionality of the data was first reduced by conducting a phylogenetic principal components analysis on an evolutionary variance-covariance matrix of the normalized Fourier descriptors [70]. Custom R scripts for computing and plotting phylogenetic PCA of elliptical Fourier data are provided in Supplementary File S1. The significant principal components (those that explain 5% or more of the total observed variance) were used as the dependent variables in the MANOVAs. MANOVAs were repeated using flight style and

foraging style as the grouping factor and with both the Hackett et al. [46] backbone tree and Ericson et al. [49] backbone tree.

In order to determine which aspects of morphological variation best explain the differences among functional (flight or foraging) groups, we used a Phylogenetic Flexible Discriminant Analysis (pFDA), a multigroup classification tool related to Linear Discriminant Analysis and Canonical Correlation Analysis [89–91]. This method involves using a phylogenetic generalized least squares regression to construct a model estimating the relationship between the dependent variables (morphology) and group identity. The model is then used to predict group identity for each taxon given the data [89,91]. The accuracy of the model—the degree to which group identity can be predicted by its morphology—can be evaluated by its misclassification rate. The misclassification rate equals the proportion of species that were improperly assigned to their respective class using the model (lower misclassification rate means higher accuracy of the model). Finally, the pFDA model can be used to generate an ordination plot to assist in the interpretation of the characters that differentiate each group. As with the MANOVAs, pFDA was repeated using both topologies and both eco-functional classification schemes.

Results

(a) Phylogenetic Signal Results

Phylogenetic relationships influence both free caudal vertebral anatomy and pygostyle shape. Pagel's λ was slightly different for the first, middle, and last vertebra, but ranged between 0.418 and 0.723 (Table 1), thus the phylogenetic signal in free caudal vertebra can be characterized as moderate to high. Pagel's λ was also calculated using the NEF descriptors for pygostyle shape and found to be 0.42, indicating a moderate degree of signal (Table 1). Using the consistency index, a more appropriate measure of phylogenetic signal for geometric morphometric data, phylogenetic signal for pygostyle shape was found to be approximately 0.45 ($p < 0.001$), confirming a moderate level of phylogenetic influence on morphology. The results of the tests of phylogenetic signal were not substantially different when either of the two topologies were used, nor were the results of any of the subsequent analyses. As such, results are presented for the Hackett topology only [46]. These results justify the use of the phylogenetic comparative methods used below.

(b) Phylogenetic MANOVA Results

The first, middle, and last free caudal vertebrae were analyzed using phylogenetic MANOVA for both topologies and for both eco-functional classification schemes (flight style and foraging style). In nearly all cases we found a significant difference in caudal vertebral anatomy among the groups (Table 2). Birds that utilize different flight styles differ in the dimensions of their first, middle, and last free caudal vertebrae ($p < 0.05$), regardless of the choice of phylogenetic tree. Taxa that utilize different foraging styles have

Table 1. Phylogenetic Signal.

Dataset	Pagel's λ	Log Likelihood
First Vertebra	0.6786913	−432.4101
Middle Vertebra	0.53254101	−552.9049
Last Vertebra	0.7236591	−574.1383
Pygostyle Shape	0.4181343	5239.667

doi:10.1371/journal.pone.0089737.t001

Table 2. Phylogenetic MANOVA Results: Free Caudal Vertebrae.

Dataset	Grouping	Degrees of Freedom	Pillai-Bartlett Trace	Approximate F Number	Ahistorical p-Value	Phylogenetic p-Value	Significance
First Vertebra	Flight Style	5	1.9958	3.4877	2.42E-09	0.002997	*
Middle Vertebra	Flight Style	5	2.136	2.6443	4.85E-07	0.02198	*
Last Vertebra	Flight Style	5	2.1851	2.7521	1.61E-07	0.01998	*
First Vertebra	Forging Style	4	1.632	3.6183	3.11E-08	0.03696	*
Middle Vertebra	Forging Style	4	1.8754	3.1297	1.04E-07	0.1179	
Last Vertebra	Forging Style	4	2.3282	4.9376	6.45E-14	0.000999	*

doi:10.1371/journal.pone.0089737.t002

significantly different post-synsacral and pre-pygostylar vertebrae ($p < 0.05$). Middle caudal vertebrae did not exhibit significant differences ($p > 0.1$).

Phylogenetic MANOVAs were also used to examine whether different flight or foraging groups differ in pygostyle shape. The PC scores from a phylogenetic PCA were used as the dependent variables in the MANOVA. The PCA indicates that the first six PC axes combined explain $>85\%$ of the cumulative variance ($>5\%$ per axis), and these six axes were retained for the MANOVAs. Pygostyle shape does not differ significantly among flight style groups ($p > 0.1$, Table 3). Among foraging groups, however, pygostyle shape is nearly significantly different ($p = 0.05195$). If the non-aquatic foraging groups (i.e., terrestrial and aerial) are combined, such that the groups are Plunge Dive, Foot-propelled Pursuit Dive, Wing-propelled Pursuit Dive, and Non-diving, the results of the phylogenetic MANOVA are significant at $p < 0.01$ (Table 3).

(c) Phylogenetic FDA (pFDA) Results

To assist with interpreting which specific variables best explain differences among groups, we used pFDA ordinations. Using flight style as the grouping factor, pFDA of each of the three free caudal vertebrae generated a misclassification rate of 37–41% (Fig. 5). The majority of misclassifications occurred between flapping and flap-gliding taxa, in addition to commonly misclassifying both static and dynamic soaring taxa as flappers. In general, only wing-propelled flightless birds (*Pygoscelis papua* and *Pygoscelis adeliae*) and one foot-propelled flightless bird (*Phalacrocorax harrisi*) consistently occupy distinct regions of pFDA morphospace. *Pygoscelis* is characterized by a dorsoventrally restricted, laterally wide centrum and spinous process and a laterally restricted transverse process. *Phalacrocorax harrisi* exhibits a large spinous process and a small vertebral centrum. The remaining 48 taxa, representing the flap, flap-glide, static soar, and dynamic soar groups are clustered together in pFDA morphospace and lack any strong discriminant characteristics among the groups.

When foraging style is used as the grouping factor, the misclassification rate is 23–39% (Fig. 6). The highest misclassification rates for foraging style occur in the first and middle caudal vertebra datasets (39% and 31% respectively). In these datasets, aerial foragers and plunge-diving foragers were most commonly misclassified. Several plunge divers were misclassified as aerial or terrestrial foragers. Aerial foragers were most commonly misclassified as terrestrial, but were occasionally placed among the pursuit-diving or plunge-diving groups. The results (Figs. 6a–b) of these two pFDA analyses illustrate that terrestrial, foot-propelled diving, and wing propelled diving birds occupy somewhat distinct regions of morphospace, whereas aerial and plunge-diving birds occupy a common region of morphospace that overlaps with the other groups.

A misclassification rate of 24% for the propygostylar vertebra dataset is the least severe among the examined free caudal elements (Fig. 6c). The patterns observed here are somewhat different than for vertebrae positioned more cranially along the series. Aerial foragers are again the most frequently misclassified, sometimes being placed among the terrestrial or pursuit-diving foragers. There is considerably less classification error for the other foraging groups. When errors do occur, taxa are most often placed among the aerial foragers. Terrestrial, plunge-diving, and wing-propelled pursuit-diving foragers each group in distinct regions of the pFDA plots (Fig. 6c). Plunge-diving and wing-propelled pursuit-diving foragers are high on Discriminant Axis 1, indicating both groups have an craniocaudally restricted centrum and an craniocaudally restricted, yet wide ventral process. These groups are distinct from one another in that plunge divers score low on Discriminant Axis 2 (dorsoventrally expanded, narrow centrum, large spinous process, and small transverse process) but wing-propelled divers are high on Axis 2 (dorsoventrally restricted, wide centrum, small spinous process, and large transverse process). In contrast, terrestrial foragers are low on Axis 1 but high on Axis 2. This position in morphospace corresponds to a dorsoventrally restricted, elongate and wide centrum, large transverse process, and small spinous process. Aerial foragers and foot-propelled

Table 3. Phylogenetic MANOVA Results: Principal Components of Pygostyle Shape.

Grouping	Degrees of Freedom	Pillai-Bartlett Trace	Approximate F Number	Ahistorical p-Value	Phylogenetic p-Value	Significance
Flight Style	5	1.0598	1.9724	3.01E-03	0.3766	
Foraging Style	4	1.2827	3.4615	1.04E-06	0.05195	
Diving Type	3	1.1795	4.751	5.05E-08	0.008991	*

doi:10.1371/journal.pone.0089737.t003

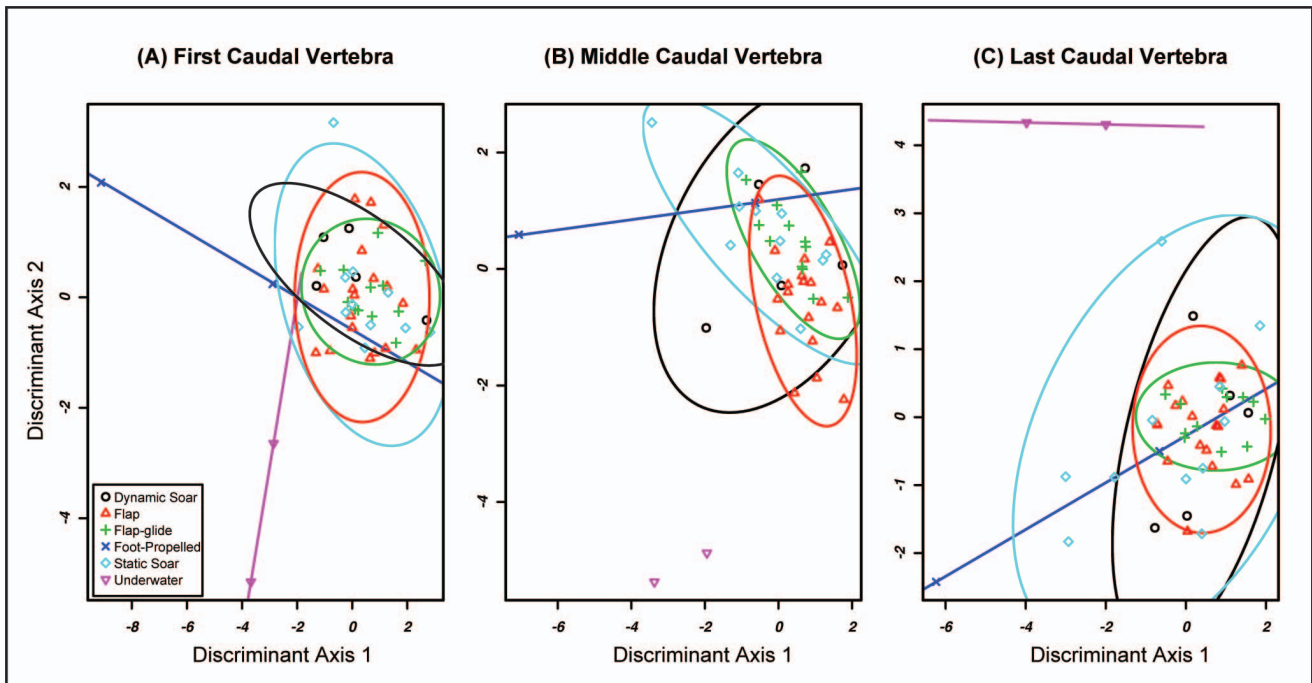


Figure 5. 5a: Flight Style pFDA Plot: First Caudal Vertebra. Misclassification Rate = 41.18%. 5b: Flight Style pFDA Plot: Middle Free Caudal Vertebra. Misclassification Rate = 37.25%. 5c: Flight Style pFDA Plot: Last Free Caudal Vertebrae. Misclassification Rate = 37.25%. doi:10.1371/journal.pone.0089737.g005

pursuit divers occupy an overlapping region of morphospace roughly centered on the origin.

The misclassification rate for pFDAs of pygostyle shape data is much lower than for free caudal vertebrae. When flight style is

used as the grouping factor, only seven out of 51 taxa are misclassified (13.7%). All seven of these cases involve ambiguous placements among flap, flap-glide, and static soaring taxa. As with free caudal vertebrae, wing-propelled flightless species (penguins)

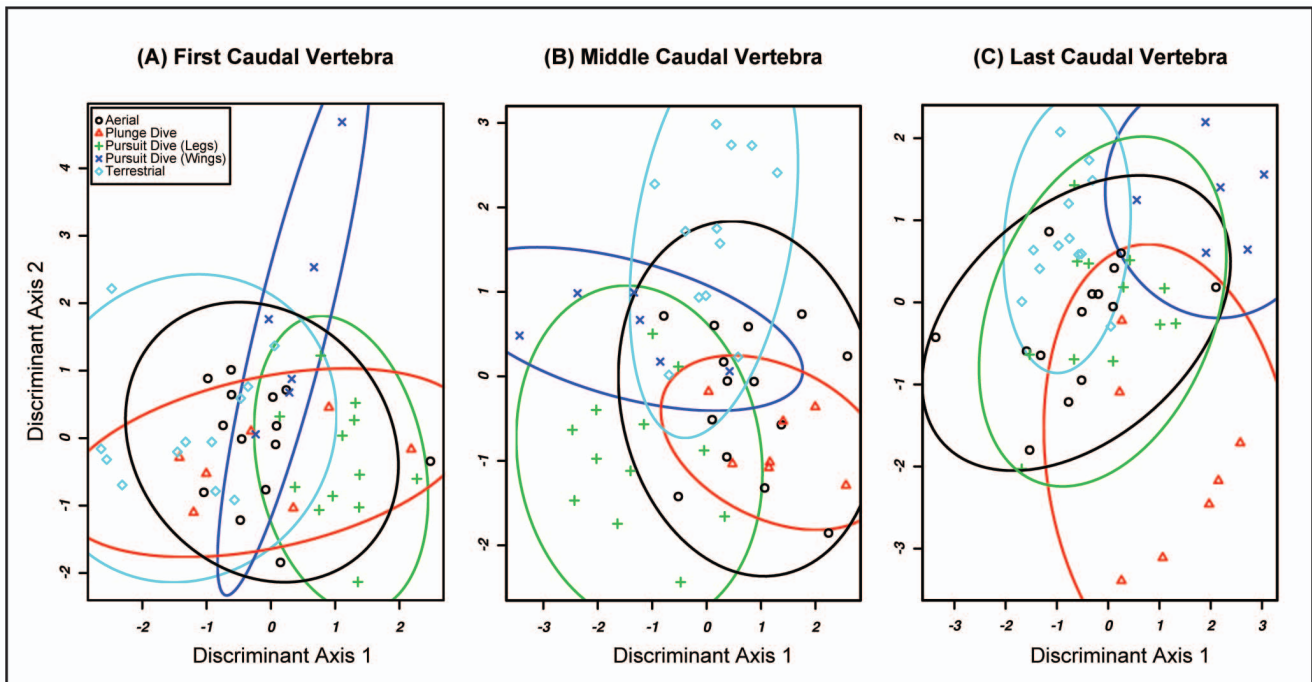


Figure 6. 6a: Foraging Style pFDA Plot: First Free Caudal Vertebrae. Misclassification rate = 39.22%. 6b: Foraging Style pFDA Plot: Middle Free Caudal Vertebrae. Misclassification rate = 31.37%. 6c: Foraging Style pFDA Plot: First Last Caudal Vertebrae. Misclassification rate = 23.52%. doi:10.1371/journal.pone.0089737.g006

and foot-propelled flightless species (*Phalacrocorax harrisi* and *Rollandia microptera*) each occupy distinct regions of pFDA morphospace (Fig. 7). Foot-propelled flightless species score extremely low on Discriminant Axis 1 and moderately high on Axis 2, whereas wing-propelled flightless species score very low on Axis 2. Foot-propelled flightless birds have a pygostyle with a strong dorsal deflection and a pointed caudal margin. Wing-propelled flightless birds (penguins) have an extremely elongate, straight pygostyle. The remaining flight style groups (flap, flap-glide, static soar, dynamic soar) are somewhat restricted to a smaller region of morphospace, but overlap among these groups is minimal. Static soaring and flapping taxa have quite similar pygostyle shape, with a slight dorsal deflection and a slight taper. Static soarers have a slightly more pointed caudal margin whereas the typical flapping bird pygostyle is slightly rounded. Dynamic soaring birds have a rounded pygostyle with a deep articulation for the propygoistylar vertebra. Flap-gliding taxa have a somewhat elongate, blunt pygostyle with a shallow articular surface.

Finally, the pFDA of pygostyle shape using foraging style as the grouping factor produces the most accurate discrimination, with just 2 of 51 taxa being misclassified (3.9%). The only misclassified taxa are the aerial foragers *Phoebastria immutabilis* and *Fregata magnificens*, both misclassified as terrestrial foragers. Their respective congeners, *Phoebastria nigripes* and *Fregata minor*, were correctly classified. A plot of the first two discriminant axes (Fig. 8) reveals that each foraging group is characterized by a distinct pygostyle shape. Plunge divers and wing-propelled pursuit divers both have a very elongate pygostyle; the plunge-diver pygostyle is tapered whereas wing-propelled pursuit divers are not. Foot-propelled pursuit divers are situated in pFDA phylomorphospace in between the wing-propelled divers and terrestrial foragers and exhibit a dorsoventrally expanded pygostyle that tapers to a point caudally. Terrestrial taxa have a pygostyle that is expanded dorsoventrally and is dorsocaudally directed. Finally, the average pygostyle of the aerial foraging group is similar to the terrestrial foraging condition, but exhibits a distinct narrowing midway along its length, giving an hourglass-like shape.

Discussion

Does Free Caudal Vertebral Morphology Differ Among Ecological Groups?

The two analyses, MANOVA and pFDA, give ostensibly conflicting results regarding the association between free caudal vertebral morphology and flight behavior (foraging and flight styles). Phylogenetic MANOVAs identified a significant difference in free caudal vertebral morphology among flight style groups. In contrast, the pFDAs of each free caudal vertebra using flight style as a grouping factor produced high misclassification rates. These conflicting results indicate that free caudal vertebral morphology is *not* useful for discriminating among flight style groups. Similar results were found using foraging style as a grouping factor – the MANOVAs for the first and last free caudal vertebrae return a significant difference among groups, yet pFDAs of these data result in a high misclassification rate.

The discordance between these results of the MANOVA and pFDA analyses is most likely attributed to the limitations of each analysis and the structure of the dataset. Whereas MANOVA is parametric, pFDA is not [88,90,91]. Thus, pFDA is more robust to deviations from multivariate normality and homoscedasticity than phylogenetic MANOVA. None of the free caudal vertebral datasets meet the criterion of multivariate normality. In order to mitigate the effects of the structure of the data, Pillai-Bartlett's Trace was used as the test statistic because it is more robust to

deviations from the assumptions of the MANOVA than the more common Wilk's lambda test statistic [92]. The non-significant results of the pFDA suggest that the significant results of the phylogenetic MANOVA are spurious and that the structure of the free caudal vertebrae dataset is not well suited for such an analysis. The results of the pFDAs using these data can be interpreted with greater confidence.

Birds cannot be reliably assigned to flight style groups on the basis of free caudal vertebral morphology. The pFDA plots show that most taxa cluster together, with only the flightless birds *Pygoscelis spp.* and *Phalacrocorax harrisi* characterized by distinct caudal vertebral morphology compared to their close relatives. Although *Pygoscelis* and *Phalacrocorax harrisi* do not have similar free caudal morphology, the fact that these flightless swimming birds are distinct from all other sampled taxa suggests that this morphological divergence may be related to their specialized locomotor styles. The penguins possess a reduced transverse process and a wide, dorsoventrally compressed centrum. In contrast, *P. harrisi* is characterized by a large spinous process with a small centrum, creating a dorsoventrally expanded, laterally compressed vertebra. The different vertebral anatomy in these clades of flightless taxa could be related to functional differences in tail use among wing-propelled flightless (*Pygoscelis*), foot-propelled (*Phalacrocorax*) flightless, and volant taxa. For example, the range of motion of the tail in elevation is limited by the “knocking together” of the spinous processes [18]. The tall spinous process of *P. harrisi* may thus restrict the extent to which it can elevate the tail. Given that tail elevation is observed primarily during takeoff [18,86], it is possible that the unique caudal vertebral morphology of this taxon represents a relaxation of constraints maintaining the function of this structure as part of the flight apparatus.

Among the volant groups, most misclassification errors pertain to the flapping group. This manifests as either ambiguity between flapping and flap-gliding taxa or with dynamic- and static-soaring birds being classified in the flapping group. This suggests that flapping birds may have greater disparity in vertebral morphology than other flight style groups, and thereby occupy a greater region of pFDA morphospace. This is consistent with the hypothesis that birds with powerful wings for flight should display increased variance in tail form as constraints on the tail as a component of the aerial locomotor apparatus are relaxed [13].

When foraging style is used as the grouping factor for pFDA ordinations, the results are similar: high misclassification rates for first and middle caudal vertebrae and a moderate misclassification rate for the last caudal vertebrae. Misclassification error decreases and foraging groups separate better in phylomorphospace moving from cranial to caudal through the free vertebral series. The propygoistylar vertebra has moderate predictive power with only 24% misclassification. The differences in predictive power among the three positions along the caudal vertebral column could be related to the association between more distal caudal vertebrae. The distal caudal vertebrae are variably ankylosed as part of the pygostyle and the distal-most free caudal vertebra articulates with the pygostyle. Baumel [18] noted that in rock dove (*Columba livia*) the propygoistylar vertebra is reduced in size and hypothesized that this was an adaptation for increased freedom of movement at the propygoistylar joint. Given that pygostyle shape seems to be influenced by flight behavior (see below) and that the propygoistylar vertebra is functionally linked with pygostyle, it is possible that the same evolutionary forces drive pygostyle and propygoistylar vertebral morphological variation but do not influence more cranial regions of the caudal series.

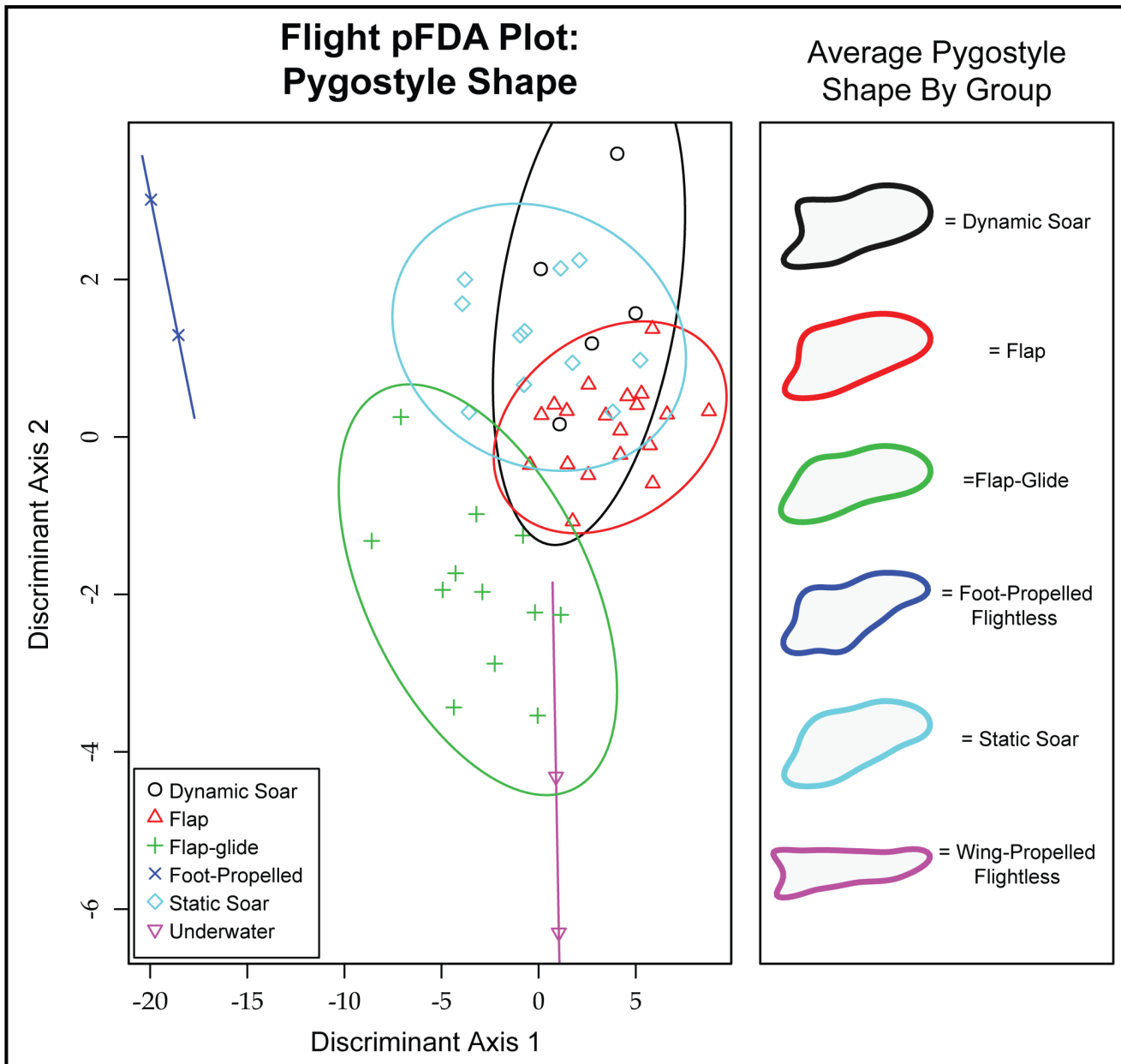


Figure 7. Flight Style pFDA Plot: Pygostyle Shape. Misclassification rate = 13.73%. doi:10.1371/journal.pone.0089737.g007

Does Pygostyle Shape Differ Among Ecological Groups?

In contrast to free caudal vertebral morphology, pygostyle shape is an excellent predictor of foraging style in waterbirds. The results of the phylogenetic MANOVAs and pFDAs are more congruent with one another using NEF descriptors of pygostyle shape. Each foraging group is characterized by a significantly different pygostyle shape (Fig. 8). Aerial foragers exhibit a vertically-deflected pygostyle with a blunt caudal margin and dorsoventral constriction midway along its length, resulting in a distinctive hourglass shape. Terrestrial foragers have a generally similar pygostyle shape when compared to aerial foragers, but lack the dorsoventral constriction. Foot-propelled pursuit divers have a pygostyle that is dorsoventrally expanded at the cranial end but that tapers to a point caudally. Wing-propelled pursuit divers exhibit an exceptionally long pygostyle that does not taper. Plunge

divers have a generally similar pygostyle, but one that tapers gradually. In general, underwater foragers (plunge dive and pursuit dive) have straight, elongate pygostyles, whereas birds that do not forage underwater (aerial and terrestrial) have craniocaudally restricted, dorsally-oriented pygostyles. The only misclassifications occurred between non-aquatic groups, supporting a dichotomy between aquatic and non-aquatic foragers.

Underwater foraging birds exhibit convergence in pygostyle morphology (Fig. 9). The significance of a straight, elongate pygostyle is likely related to the mechanical demands on the tail when moving through water as opposed to air. Observational data on captive Great Cormorants (*Phalacrocorax carbo*) and several species of penguins indicate that the tail is used as a steering structure, controlling pitch and yaw for high speed underwater turns [93–95]. Stifftail ducks (Oxyurinae), a group of foot-

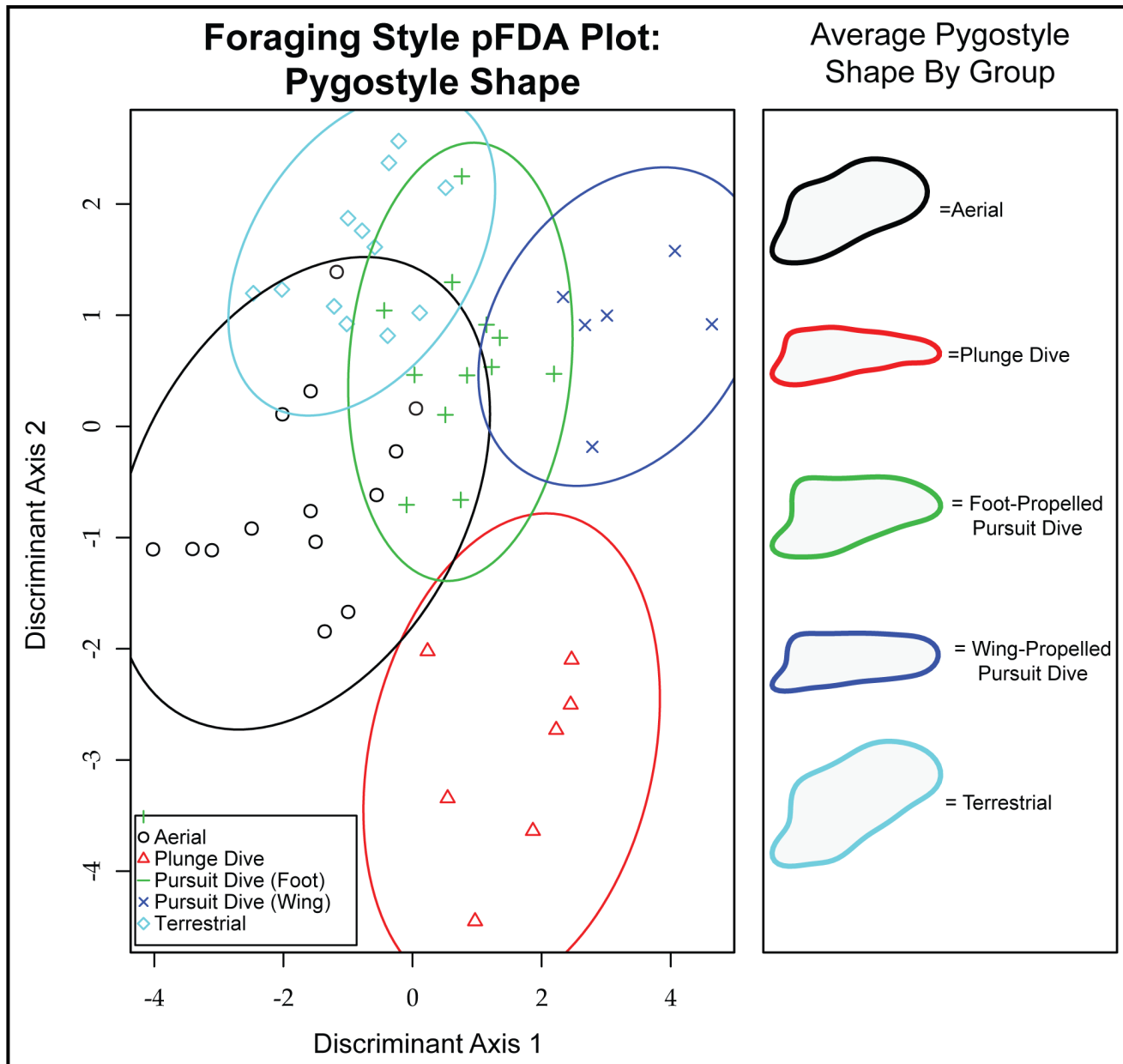


Figure 8. Foraging Style pFDA Plot: Pygostyle Shape. Misclassification rate = 3.92%.
doi:10.1371/journal.pone.0089737.g008

propelled diving specialists, also use the tail as a rudder [37,96]. Quantitative data on the use of the tail in underwater locomotion in other birds is not available. Nonetheless, the ubiquitous use of the tail as a control surface in aerial locomotion and the observed use of the tail during swimming in certain clades suggest that the tail is no doubt an important part of the swimming locomotor apparatus in diving birds. An elongate pygostyle may confer some advantage when moving the tail through water.

Underwater locomotion imposes certain unique challenges. During flight, the wings and tail produce lift, resisting the downward force of gravity. Conversely, while diving underwater a bird must counteract its own buoyancy, an upward force pulling it toward the surface. Accordingly, wing-propelling diving birds use different power strokes for flying and swimming—the flight stroke produces a downward force whereas the swim stroke

produces an upward force [97–100]. Birds that are capable of flight and underwater diving thus experience both dorsally and ventrally directed forces acting on the tail, whereas birds that do not dive experience primarily dorsally directed force (lift). This may influence the difference in pygostyle morphology between underwater foragers and aerial/terrestrial foragers: underwater foragers exhibit a dorsoventrally symmetrical pygostyle whereas aerial and terrestrial taxa possess an asymmetrical, dorsally deflected pygostyle (Fig. 8). Perhaps birds that utilize underwater locomotion require more symmetrical attachments for dorsiflexor and ventroflexor musculature, resulting in a more symmetrical pygostyle. Alternatively, an elongate, straight pygostyle may be related to resisting biomechanical forces rather than supplying muscle attachments. Diving birds such as alcids and penguins exhibit specialized limb bone geometry being better suited to

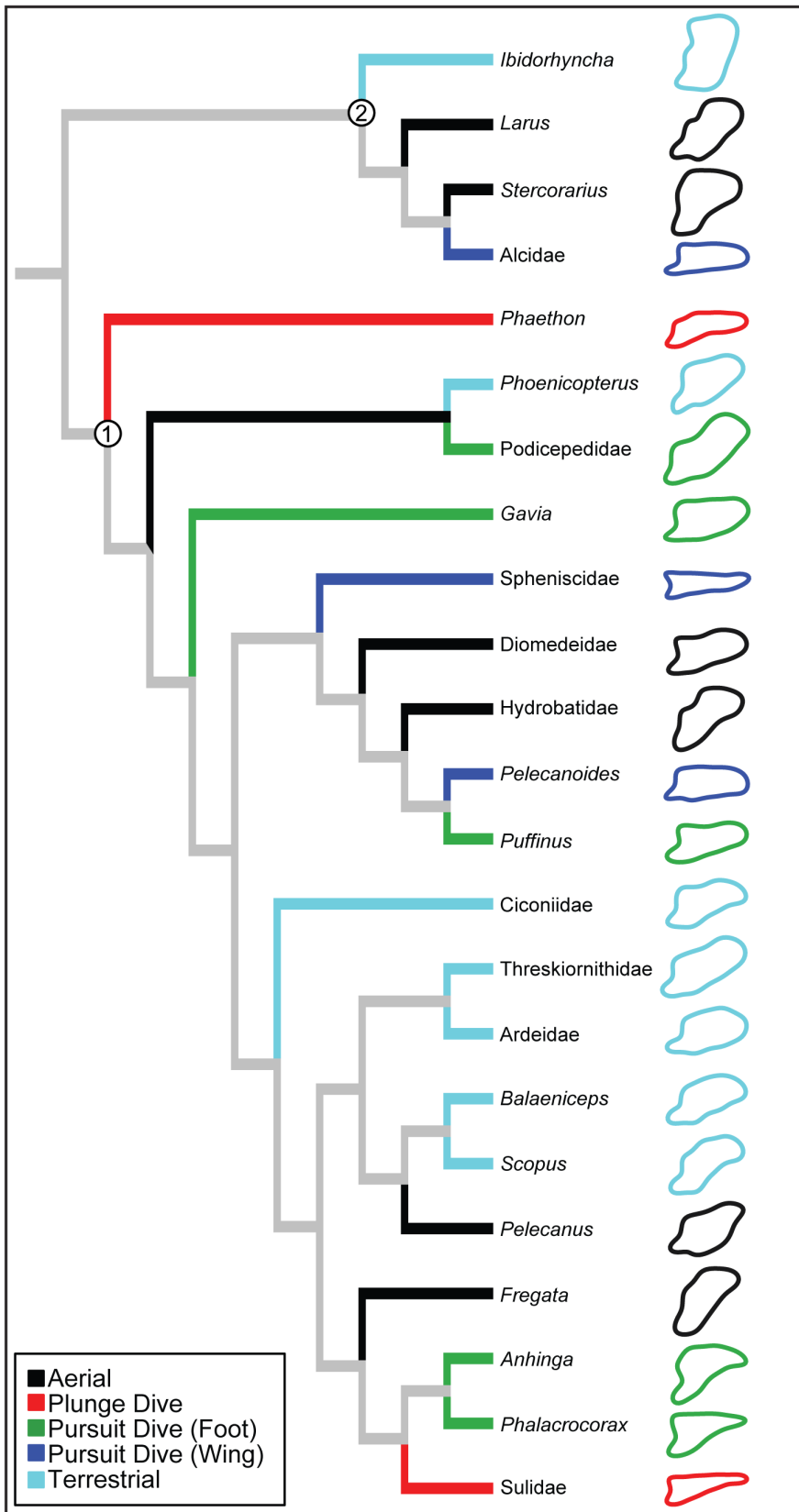


Figure 9. Foraging style and pygostyle shape mapped onto the phylogenetic topology of Hackett [46,48]. Branch colors represent foraging style; internal branches are colored gray to indicate that ancestral foraging style is uncertain. Node 1, Aequornithes (waterbirds); Node 2, Charadriiformes (shorebirds).
doi:10.1371/journal.pone.0089737.g009

resisting the high bending and torsional forces associated with the denser medium of water [101]. The geometry of the pygostyle of aquatic birds may similarly be able to resist such forces. These hypotheses require comparative surveys of caudal muscle anatomy (e.g., cross sectional area, pennation, fiber type) and pygostyle mechanical properties.

Another possible consequence of the evolution of a long, straight pygostyle is the orientation of the rectrices. Baumel [18] noted variability in the degree of concavity of the tail fan. Pigeons and some other taxa have medial rectrices that are positioned dorsally within the rectricial bulb relative to lateral rectrices, such that the array of tail feathers forms a “vaulted” or “tented” arrangement [18]. Other taxa, such as *Anser*, *Ardea*, *Chaetura*, and *Quiscalis* have a flat arrangement of the rectrices, with the rachises of each tail feather lying roughly on the same plane [18]. A dorsally-oriented pygostyle may facilitate the dorsoventral stacking of rectrices in birds with a tented tail whereas a straight pygostyle may be indicative of flat tail fan. Conformation of a link between pygostyle shape and rectricial configuration will require an extensive survey of soft tissue morphology. Additionally, the functional consequences of a tented tail are not currently known, as aerodynamic models of the avian tail assume a flat tail fan [25].

Convergent caudal morphology in diving birds is not surprising given the numerous morphological specializations observed in these forms. Diving waterbirds and anseriforms have a reduced level of skeletal pneumaticity relative to their non-diving relatives [50,102]. Foot-propelled diving birds have pelvic girdle and hind limb morphology that increases mechanical advantage for paddling [96]. Diving pelecyaniform birds (anhingas, cormorants), have distinct forelimb cross-sectional geometry with high levels of cortical bone, likely related to buoyancy modulation [42]. Similarly, the humerus of wing-propelled divers such as penguins and alcids exhibits thick cortical bone, making this element resistant to bending and torsion under the high mechanical loads involved with flapping underwater [101]. Foot-propelled divers typically exhibit a suite of traits related to increasing swimming performance such as a long, narrow pelvis, a large, stable knee articulation, and a posteriorly placed hip joint [44]. Taken together with the results of this study, it is clear that the evolution of diving behavior in birds results in a wide range of morphological adaptations to cope with the unique demands of underwater locomotion.

Finally, the high predictive power of the pFDA of pygostyle shape suggests that pygostyle morphology may be useful for interpreting the ecology of extinct pygostylian birds. Past studies have used forelimb, hind limb, and furcula morphology to predict ecology (flight style and/or foraging style) in extinct birds with some success [14,44,103,104]. Incorporating information from the tail with data from the other two avian locomotor modules (wings and legs) could improve inferences of foraging behavior from the fossil record. For example, the Cretaceous diving bird *Baptornis* is characterized by an elongate pygostyle [105].

Conclusions

Pygostyle shape is an excellent predictor of foraging style in waterbirds. Underwater foraging birds, such as cormorants,

References

- Adams DC, Nistri AA (2010) Ontogenetic convergence and evolution of foot morphology in European cave salamanders (Family: Plethodontidae). *Bmc Evol Biol* 10: 216–216. doi:10.1186/1471-2148-10-216.
- Mallarino RR, Abzhanov AA (2012) Paths less traveled: evo-devo approaches to investigating animal morphological evolution. *Annu Rev Cell Dev Biol* 28: 743–763. doi:10.1146/annurev-cellbio-101011-155732.
- Berner D, Adams DC, Grandchamp A-C, Hendry AP (2008) Natural selection drives patterns of lake-stream divergence in stickleback foraging morphology. *Journal of Evolutionary Biology* 21: 1653–1665. doi:10.1111/j.1420-9101.2008.01583.x.

penguins, puffins, gannets, and tropicbirds, exhibit convergent evolution toward a strait, elongate pygostyle (Fig. 9). Moreover, each underwater foraging group (foot propelled, wing propelled, and plunge diving) has a distinctive pygostyle shape (Fig. 8). Free caudal vertebral morphology, in contrast, is a less informative predictor of flight style or foraging style groups. These results contribute to the body of knowledge on how the acquisition of underwater locomotor behaviors influences avian morphology. The tail skeleton, much like the forelimbs, hind limbs, and skeletal pneumaticity, is modified in swimming birds.

The disassociation of the tail module from the hind limb module in basal birds is thought to have been an important innovation that allowed for ecological diversification [17,106,107]. Each of the three locomotor modules (wings, legs, and tail) can evolve semi-independently and have been emphasized to varying degrees, increasing the diversity of locomotor repertoires available to birds [16,17,106,107]. The use of the tail for locomotion is predicted to be emphasized in birds that are capable of complex flight behavior with small bodies and elevated nests [106]. The importance of the tail module in diving waterbirds with colonial nesting and large bodies is previously unrecognized. The diversification of diving birds may have been facilitated by evolution of caudal structure and function for underwater locomotion in the same way that diversification into other niches is thought to be related to correlated evolution of the wings and tail for aerial locomotion.

Supporting Information

Table S1 Taxon list. Flight-style and foraging-style assignments, sample size, and specimen lists. Institutional Abbreviations—AMNH, American Museum of Natural History, New York, New York; CMNH, Carnegie Museum of Natural History, Pittsburgh, PA; FMNH, Field Museum of Natural History, Chicago, IL; NMNH, National Museum of Natural History, Washington, DC; OUVV, Ohio University Vertebrate Collection, Athens, OH.

(XLSX)

Table S2 Skeletal Data Table. Averaged by species.

(XLSX)

File S1 R Script for Conducting Phylogenetic PCA Using EFA Data.

(DOC)

Acknowledgments

The authors wish to thank the following individuals: C.M. Milensky, H. James, P. Sweet, M. Okada, S.P. Rogers, B. Marks, and M. Hennen for facilitating access to specimens. D.B. Miles, and S.R. Kuchta provided invaluable discussion. L.M. Witmer provided feedback and comments on a previous version of this manuscript

Author Contributions

Conceived and designed the experiments: RNF PMO. Performed the experiments: RNF. Analyzed the data: RNF. Wrote the paper: RNF PMO.

4. Owens IPF, Bennett PM, Harvey PH (1999) Species richness among birds: body size, life history, sexual selection or ecology? *Proceedings of the Royal Society B* 266: 933–939.
5. Schluter D (1996) Ecological causes of adaptive radiation. *American Naturalist*: S40–S64.
6. Ricklefs RE (2004) Cladogenesis and morphological diversification in passerine birds. *Nature* 430: 338–341.
7. Ward AB, Mehta RS (2010) Axial elongation in fishes: using morphological approaches to elucidate developmental mechanisms in studying body shape. *Integrative and Comparative Biology* 50: 1106–1119. doi:10.1093/icb/icq029.
8. Sanger TJ, Mahler DL, Abzhanov A, Losos JB (2011) Roles for modularity and constraint in the evolution of cranial diversity among *Anolis* lizards. *Evolution* 66: 1525–1542. doi:10.1111/j.1558-5646.2011.01519.x.
9. Fitzpatrick JW (1985) Form, foraging behavior, and adaptive radiation in the Tyrannidae. *Neo-Tropical Ornithology Ornithological Monographs No. 26*. Washington, D.C.: American Ornithologists Union. 447–470.
10. Schluter D, McPhail JD (1992) Ecological character displacement and speciation in sticklebacks. *American Naturalist* 140: 85–108. doi:10.1086/285404.
11. Monteiro LR, Nogueira MR (2010) Adaptive radiations, ecological specialization, and the evolutionary integration of complex morphological structures. *Evolution* 64: 724–744. doi:10.1111/j.1558-5646.2009.00857.x.
12. Hunter J (1998) Key innovations and the ecology of macroevolution. *Trends in Ecology and Evolution* 13: 31–36.
13. Bleiweiss R (2009) The tail end of hummingbird evolution: parallel flight system development in living and ancient birds. *Biological Journal of the Linnean Society* 97: 467–493.
14. Close RA, Rayfield EJ (2012) Functional Morphometric Analysis of the Furcula in Mesozoic Birds. *PLoS ONE* 7: e36664.
15. Wainwright P (2007) Functional versus morphological diversity in macroevolution. *Annual Review of Ecology, Evolution, and Systematics* 38: 381–401.
16. Gates S, Dial K (1996) From frond to fan: *Archaeopteryx* and the evolution of short-tailed birds. *Evolution* 50: 2037–2048.
17. Gates S, Dial K (1996) Locomotor modules and the evolution of avian flight. *Evolution* 50: 331–340.
18. Baumel JJ (1988) Functional morphology of the tail apparatus of the pigeon (*Columba livia*). Berlin: Springer-Verlag. 115 pp.
19. Sachs G (2007) Tail effects on yaw stability in birds. *Journal of Theoretical Biology* 249: 464–472. doi:10.1016/j.jtbi.2007.07.014.
20. Maybury W, Rayner J, Couldrick L (2001) Lift generation by the avian tail. *Proceedings: Biological Sciences* 268: 1443–1448.
21. Thomas A (1996) Why do birds have tails? The tail as a drag reducing flap, and trim control. *Journal of Theoretical Biology* 183: 247–253.
22. Thomas A, Balmford A (1995) How natural selection shapes birds' tails. *The American Naturalist* 146: 848–868.
23. Baumel JJ, Witmer LM (1993) Osteologia. In: King AS, Baumel JJ, Breazile JE, Evens HE, Vaden Berge JC, editors. *Handbook of Avian Anatomy: Nomina Anatomica Avium*. 45–132.
24. Balmford A, Thomas A, Jones I (1993) Aerodynamics and the evolution of long tails in birds. *Nature* 361: 628–631.
25. Thomas A (1993) On the aerodynamics of birds' tails. *Philosophical Transactions: Biological Sciences* 340: 361–380.
26. Fitzpatrick S (1999) Tail length in birds in relation to tail shape, general flight ecology and sexual selection. *Journal of Evolutionary Biology*: 49–60.
27. Thomas AL (1997) On the tails of birds. *BioScience*: 215–225.
28. Bancroft GT (1984) Growth and sexual dimorphism of the Boat-Tailed Grackle. *Condor* 86: 423–432.
29. Brown DE, Gutierrez RJ (1980) Sex-ratios, sexual selection, and sexual dimorphism in quails. *J Wildlife Manage* 44: 198–202.
30. Evans MR, Thomas ALR (1992) The aerodynamic and mechanical effects of elongated tails in the scarlet-tufted malachite sunbird: measuring the cost of a handicap. *Animal Behaviour* 43: 337–347.
31. Balmford A, Jones I, Thomas A (1994) How to compensate for costly sexually selected tails: the origin of sexually dimorphic wings in long-tailed birds. *Evolution* 48: 1062–1070.
32. Pryke S, Andersson S (2005) Experimental evidence for female choice and energetic costs of male tail elongation in red-collared widowbirds. *Biological Journal of the Linnean Society* 86: 35–43.
33. Andersson S (1992) Female preference for long tails in lekking Jackson's widowbirds: experimental evidence. *Animal Behaviour*.
34. Van Oort ED (1904) Beitrag zur osteologie des vogelschwanzes Universität Bern.
35. Owre OT (1967) Adaptations for locomotion and feeding in the anhinga and the double-crested cormorant. *Battle Creek, Mich.: The American Ornithologists' Union*. 138 pp.
36. Fisher HI (1946) Adaptations and comparative anatomy of the locomotor apparatus of New World vultures. *American Midland Naturalist* 35: 545–727.
37. Raikow RJ (1970) Evolution of diving adaptations in the stiff-tail ducks. *University of California Publications in Zoology*. 52 pp.
38. Burt WH (1930) Adaptive modifications in the woodpeckers. *University of California Publications in Zoology*. 70 pp.
39. Richardson F (1972) Accessory pygostyle bones of falconidae. *The Condor* 74: 350–351.
40. Richardson F (1942) Adaptive modifications for tree-trunk foraging in birds. *University of California Press*. 62 pp.
41. Manegold A, Töpfer T (2012) The systematic position of *Hemicircus* and the stepwise evolution of adaptations for drilling, tapping and climbing up in true woodpeckers (Picinae, Picidae). *J Zoological System* 51: 72–82. doi:10.1111/jzs.12000.
42. Simons ELR, Hieronymus TL, O'Connor PM (2011) Cross sectional geometry of the forelimb skeleton and flight mode in pelecianiform birds. *Journal of Morphology* 272: 958–971. doi:10.1002/jmor.10963.
43. Simons ELR (2010) Forelimb skeletal morphology and flight mode evolution in pelecianiform birds. *Zoology* 113: 39–46. doi:10.1016/j.zool.2009.05.002.
44. Hinić-Frljo S, Motani R (2010) Relationship between osteology and aquatic locomotion in birds: determining modes of locomotion in extinct Ornithurae. *Journal of Evolutionary Biology* 23: 372–385. doi:10.1111/j.1420-9101.2009.01909.x.
45. Zeffler A, Johansson LC, Marmebro Å (2003) Functional correlation between habitat use and leg morphology in birds (Aves). *Biological Journal of the Linnean Society* 79: 461–484.
46. Hackett SJ, Kimball RT, Reddy S, Bowie RCK, Braun EL, et al. (2008) A phylogenomic study of birds reveals their evolutionary history. *Science* 320: 1763–1768. doi:10.1126/science.1157704.
47. Mayr G (2011) Metaves, Mirandornithes, Strisores and other novelties - a critical review of the higher-level phylogeny of neornithine birds. *J Zoological System* 49: 58–76. doi:10.1111/j.1439-0469.2010.00586.x.
48. Jetz WW, Thomas GHG, Joy JB, Hartmann KK, Mooers AOA (2012) The global diversity of birds in space and time. *Nature* 491: 444–448. doi:10.1038/nature11631.
49. Ericson PGP, Anderson CL, Britton T, Elzanowski A, Johansson US, et al. (2006) Diversification of Neoaves: integration of molecular sequence data and fossils. *Biology Letters* 2: 543–547. doi:10.1098/rsbl.2006.0523.
50. Smith ND (2012) Body mass and foraging ecology predict evolutionary patterns of skeletal pneumaticity in the diverse “waterbird” clade. *Evolution* 66: 1059–1078. doi:10.1111/j.1558-5646.2011.01494.x.
51. Pennycook CJ (1997) Actual and “optimum” flight speeds: field data reassessed. *Journal of Experimental Biology* 200: 23–55.
52. Pennycook CJ (1982) The flight of petrels and albatrosses (Procellariiformes), observed in South Georgia and its vicinity. *Philosophical Transactions of the Royal Society B: Biological Sciences* 300: 75–106.
53. Le Corre M (1997) Diving depths of two tropical Pelecianiformes: The Red-tailed Tropicbird and the Red-footed Booby. *The Condor* 99: 1004–1007.
54. Anderson JGT (1991) Foraging behavior of the American White Pelican (*Pelecanus erythrorhynchos*) in western Nevada. *Colonial Waterbirds*: 166–172.
55. Brewer ML, Hertel F (2007) Wing morphology and flight behavior of pelecianiform seabirds. *Journal of Morphology* 268: 866–877. doi:10.1002/jmor.10555.
56. Spear L, Ainley D (1997) Flight behaviour of seabirds in relation to wind direction and wing morphology. *Ibis* 139: 221–233.
57. Frederic PC, Bildstein KL (1992) Foraging ecology of seven species of neotropical ibises (Threskiornithidae) during the dry season in the llanos of Venezuela. *The Wilson Bulletin* 104: 1–21.
58. Coulson JC (2002) Colonial breeding in seabirds. *Biology of marine birds*. Boca Raton, FL: CRC Press. 87–114.
59. Veit A, Jones I (2003) Function of tail streamers of Red-tailed Tropicbirds (*Phaethon rubricauda*) as inferred from patterns of variation. *Auk* 120: 1033–1043.
60. Kahl MP (1987) An overview of the storks of the world. *Colonial Waterbirds*: 131–134.
61. Pennycook CJ (1987) Flight of auks (Alcidae) and other northern seabirds compared with southern Procellariiformes. *Journal of Experimental Biology* 128: 335–347.
62. del Hoyo J, Elliott A, Sargatal J (1992) *Handbook of the Birds of The World*. Barcelona: Lynx Edicions.
63. Hobson KA, Welch HE (1992) Observations of foraging northern fulmars (*Fulmarus glacialis*) in the Canadian High Arctic.
64. McMahon BF, Evans RM (1992) Foraging strategies of American white pelicans. *Behaviour*: 69–89.
65. Barr JF (1996) Aspects of common loon (*Gavia immer*) feeding biology on its breeding ground. *Hydrobiologia* 321: 119–144.
66. Kelly JF, Gawlik DE, Kieckbusch DK (2003) An updated account of wading bird foraging behavior. *The Wilson Bulletin* 115: 105–107.
67. Mosimann JE, James FC (1979) New statistical methods for allometry with application to Florida Red-Winged Blackbirds. *Evolution* 33: 444–459.
68. Mosimann JE (1970) Size allometry - size and shape variables with characterizations of lognormal and generalized gamma distributions. *J Am Stat Assoc* 65: 930–945.
69. Revell LJ (2011) phytools: an R package for phylogenetic comparative biology (and other things). *Methods in Ecology and Evolution* 3: 217–223. doi:10.1111/j.2041-210X.2011.00169.x.
70. Revell LJ (2009) Size-correction and principal components for interspecific comparative studies. *Evolution* 63: 3258–3268. doi:10.1111/j.1558-5646.2009.00804.x.
71. Crampton JS (1995) Elliptic Fourier shape: analysis of fossil bivalves - some practical considerations. *Lethaia* 28: 179–186.
72. Ferson S, Rohlf F, Koehn R (1985) Measuring shape variation of two-dimensional outlines. *Systematic Zoology* 34: 59–68.

73. Sheets HD, Covino KM, Panasiwicz JM, Morris SR (2006) Comparison of geometric morphometric outline methods in the discrimination of age-related differences in feather shape. *Frontiers in Zoology* 3: 15. doi:10.1186/1742-9994-3-15.
74. Van Boexlaer B, Schultheiss R (2010) Comparison of morphometric techniques for shapes with few homologous landmarks based on machine-learning approaches to biological discrimination. *Paleobiology* 36: 497–515.
75. Rohlf FJ, Archie JW (1984) A comparison of Fourier methods for the description of wing shape in mosquitoes (Diptera: Culicidae). *Systematic Biology* 33: 302–317.
76. Claude J (2008) *Morphometrics with R*. New York: Springer. 1 pp.
77. Iwata H, Ukai Y (2002) SHAPE: a computer program package for quantitative evaluation of biological shapes based on elliptic Fourier descriptors. *The Journal of Heredity* 93: 384–385.
78. Bonhomme V, Picq S, Gaucherel C, Claude J (2013) Momocs: outline analysis using R. *Journal of Statistical Software: InReview*.
79. Garland TJ, Bennett AF, Rezende EL (2005) Phylogenetic approaches in comparative physiology. *Journal of Experimental Biology* 208: 3015–3035.
80. Felsenstein J (1985) Phylogenies and the comparative method. *The American Naturalist* 125: 1–15. doi:doi:10.1086/284325.
81. Pagel MD (1999) Inferring the historical patterns of biological evolution. *Nature* 401: 877–884.
82. Freckleton RP, Harvey PH, Pagel MD (2002) Phylogenetic analysis and comparative data: a test and review of evidence. *The American Naturalist* 160: 712–726. doi:10.1086/343873.
83. Klingenberg CP, Gidaszewski NA (2010) Testing and Quantifying Phylogenetic Signals and Homoplasy in Morphometric Data. *Systematic Biology* 59: 245–261. doi:10.1093/sysbio/syp106.
84. Adams DC, Otárola-Castillo E (2013) geomorph: an R package for the collection and analysis of geometric morphometric shape data. *Methods in Ecology and Evolution* 4: 393–399. doi:10.1111/2041-210X.12035.
85. Smith ND (2010) Phylogenetic analysis of Pelecaniformes (Aves) based on osteological data: implications for waterbird phylogeny and fossil calibration studies. *PLoS ONE* 5: e13354. doi:10.1371/journal.pone.0013354.t001.
86. Drummond AJA, Suchard MAM, Xie DD, Rambaut AA (2012) Bayesian phylogenetics with BEAUti and the BEAST 1.7. *Molecular Biology and Evolution* 29: 1969–1973. doi:10.1093/molbev/mss075.
87. Harmon LJ, Weir JT, Brock CD, Glor RE, Challenger W (2008) GEIGER: investigating evolutionary radiations. *Bioinformatics* 24: 129–131. doi:10.1093/bioinformatics/btm538.
88. Garland T Jr, Dickerman AW, Janis CM, Jones JA (1993) Phylogenetic analysis of covariance by computer simulation. *Systematic Biology* 42: 265–292.
89. Motani RR, Schmitz LL (2011) Phylogenetic versus functional signals in the evolution of form-function relationships in terrestrial vision. *Evolution* 65: 2245–2257. doi:10.1111/j.1558-5646.2011.01271.x.
90. Hastie T, Tibshirani R, Buja A (1994) Flexible discriminant analysis by optimal scoring. *J Am Stat Assoc* 89: 1255–1270.
91. Schmitz L, Motani R (2011) Nocturnality in dinosaurs inferred from scleral ring and orbit morphology. *Science* 332: 705–708. doi:10.1126/science.1200043.
92. Hand DJ, Taylor CC (1987) *Multivariate analysis of variance and repeated measures: a practical approach for behavioural scientists*. London: Chapman and Hall Ltd. 1 pp.
93. Hui CA (1985) Maneuverability of the Humboldt Penguin (*Spheniscus humboldti*) during swimming. *Canadian Journal of Zoology* 63: 2165–2167.
94. Ross RK (1976) Notes on the behavior of captive Great Cormorants. *The Wilson Bulletin* 88: 143–145.
95. Clark BD, Bemis W (1979) Kinematics of swimming of penguins at the Detroit Zoo. *Journal of Zoology* 188: 411–428.
96. McCracken KG, Harshman J, McClellan DA, Afton AD (1999) Data set incongruence and correlated character evolution: An example of functional convergence in the hind-limbs of stifftail diving ducks. *Systematic Biology* 48: 683–714.
97. Lovvorn JR, Liggins GA (2002) Interactions of body shape, body size and stroke-acceleration patterns in costs of underwater swimming by birds. *Funct Ecol* 16: 106–112.
98. Lovvorn JR, Jones DR, Blake RW (1991) Mechanics of underwater locomotion in diving ducks: drag, buoyancy and acceleration in a size gradient of species. *Journal of Experimental Biology* 159: 89–108.
99. Wilson RP, Hustler K, Ryan PG, Burger AE, Noldeke EC (1992) Diving birds in cold water: do Archimedes and Boyle determine energetic costs? *American Naturalist*: 179–200.
100. Hamilton JL (2006) *Alcid swimming: kinematics, muscle activity patterns and pelagic diving behavior*. Providence, Rhode Island: Brown University.
101. Habib MB, Ruff CB (2008) The effects of locomotion on the structural characteristics of avian limb bones. *Zoological Journal of the Linnean Society* 153: 601–624. doi:10.1111/j.1096-3642.2008.00402.x.
102. O'Connor PM (2004) Pulmonary pneumaticity in the postcranial skeleton of extant Aves: A case study examining Anseriformes. *Journal of Morphology* 261: 141–161. doi:10.1002/jmor.10190.
103. Bell A, Chiappe LM (2011) Statistical approach for inferring ecology of Mesozoic birds. *Journal of Systematic Palaeontology* 9: 119–133. doi:10.1080/14772019.2010.525536.
104. Wang X, McGowan AJ, Dyke GJ (2011) Avian wing proportions and flight styles: first step towards predicting the flight modes of Mesozoic birds. *PLoS ONE* 6: e28672. doi:10.1371/journal.pone.0028672.t002.
105. Martin LD, Tate J (1976) The Skeleton of *Baptornis advenus*. *Smithsonian Contributions to Paleobiology* 27: 35–66.
106. Dial KP (2006) S27–4 Patterns among avian flight style, nesting biology, development, body size, and locomotor modularity. *Acta Zoologica Sinica* 52: 502–504.
107. Benson RBJ, Choiniere JN (2013) Rates of dinosaur limb evolution provide evidence for exceptional radiation in Mesozoic birds. *Proceedings of The Royal Society B Biological Sciences* 280: 20131780–20131780. doi:10.1073/pnas.11103951108.