

Leaf Morphology and Ultrastructure Responses to Elevated O₃ in Transgenic Bt (cry1Ab/cry1Ac) Rice and Conventional Rice under Fully Open-Air Field Conditions

Chunyan Li^{1,2,4}, Biao Liu^{2*}, Chunhua Li³, Qing Zeng^{3*}, Mingzhuo Hao¹, Zhengmin Han¹, Jianguo Zhu³, Xiaogang Li⁵, Wenjing Shen²

1 College of Forest Resources and Environment, Nanjing Forestry University, Nanjing, Jiangsu, China, **2** Key Biosafety Laboratory in Nanjing Institute of Environmental Sciences, Ministry of Environmental Protection of China, Nanjing, Jiangsu, China, **3** State Key Laboratory of Soil and Sustainable Agriculture, Institute of Soil Sciences, Chinese Academy of Sciences, Nanjing, Jiangsu, China, **4** Liaoning Agricultural College, Yingkou, Liaoning, China, **5** Key Laboratory of Soil Environment and Pollution Remediation, Institute of Soil Sciences, Chinese Academy of Sciences, Nanjing, Jiangsu, China

Abstract

Background: Elevated tropospheric ozone severely affects not only yield but also the morphology, structure and physiological functions of plants. Because of concerns regarding the potential environmental risk of transgenic crops, it is important to monitor changes in transgenic insect-resistant rice under the projected high tropospheric ozone before its commercial release.

Methodology/Principal Findings: Using a free-air concentration enrichment (FACE) system, we investigated the changes in leaf morphology and leaf ultrastructure of two rice varieties grown in plastic pots, transgenic Bt Shanyou 63 (Bt-SY63, carrying a fusion gene of cry1Ab and cry1Ac) and its non-transgenic counterpart (SY63), in elevated O₃ (E-O₃) versus ambient O₃ (A-O₃) after 64-DAS (Days after seeding), 85-DAS and 102-DAS. Our results indicated that E-O₃ had no significant effects on leaf length, leaf width, leaf area, stomatal length and stomatal density for both Bt-SY63 and SY63. E-O₃ increased the leaf thickness of Bt-SY63, but decreased that of SY63. O₃ stress caused early swelling of the thylakoids of chloroplasts, a significant increase in the proportion of total plastoglobule area in the entire cell area (PCAP) and a significant decrease in the proportion of total starch grain area in the entire cell area (SCAP), suggesting that E-O₃ accelerated the leaf senescence of the two rice genotypes. Compared with SY63, E-O₃ caused early swelling of the thylakoids of chloroplasts and more substantial breakdown of chloroplasts in Bt-SY63.

Conclusions/Significance: Our results suggest that the incorporation of cry1Ab/Ac into SY63 could induce unintentional changes in some parts of plant morphology and that O₃ stress results in greater leaf damage to Bt-SY63 than to SY63, with the former coupled with higher O₃ sensitivity in CCAP (the proportions of total chloroplast area in the entire cell area), PCAP and SCAP. This study provides valuable baseline information for the prospective commercial release of transgenic crops under the projected future climate.

Citation: Li C, Liu B, Li C, Zeng Q, Hao M, et al. (2013) Leaf Morphology and Ultrastructure Responses to Elevated O₃ in Transgenic Bt (cry1Ab/cry1Ac) Rice and Conventional Rice under Fully Open-Air Field Conditions. PLoS ONE 8(12): e82199. doi:10.1371/journal.pone.0082199

Editor: Malcolm Bennett, University of Nottingham, United Kingdom

Received: April 3, 2013; **Accepted:** October 22, 2013; **Published:** December 6, 2013

Copyright: © 2013 Chunyan Li. This is an open-access article distributed under the terms of the Creative Commons Attribution License, which permits unrestricted use, distribution, and reproduction in any medium, provided the original author and source are credited.

Funding: The present research was jointly supported by the National Special Transgenic Project of China (2013ZX08012-005), the Knowledge Innovation Programme of Chinese Academy of Sciences (Grant No. KZCX2-EW-414), the National Natural Science Foundation of China (31370544, 30770408), the Doctorate Fellowship Foundation of Nanjing Forestry University and Research (2011YB009) and the Innovation Project for College Graduates of Jiangsu Province (CXZZ11_0504). The funders had no role in study design, data collection and analysis, decision to publish, or preparation of the manuscript.

Competing interests: The authors have declared that no competing interests exist.

* E-mail: 85287064@163.com (BL); qzeng@issas.ac.cn (QZ)

Introduction

Tropospheric ozone (O₃) causes severe damage to crop production and is recognized as the most phytotoxic air pollutant in many areas of the world [1–4]. The tropospheric O₃ concentration ([O₃]) has now reached a global mean of approximately 50 nl·l⁻¹ (ppb), which exceeds 40 ppb, the threshold at which vegetation that are sensitive to O₃ pollution

are affected [5,6]. The value of tropospheric [O₃], moreover, is predicted to continue to increase by 20–25% between 2015 and 2050 and to increase by 40–60% by 2100 [7]. Rice (*Oryza sativa* L.) is the most important food crop in the world [8]. Like other staple crop species, rice is sensitive to O₃ pollution [9,10]. Feng et al. [10] reported that the yield loss in rice would be projected to be 27% at an [O₃] of 51–75 ppb.

Researchers have also found that elevated O₃ severely affects not only yield but also the morphology, structure, physiological functions and reproduction of plants [11–13]. Furthermore, stomata play an important role in damage caused by O₃ because O₃ uptake in plants is strongly mediated by stomata. Many studies suggest that certain leaf morphological characteristics such as stomatal density and leaf thickness may be related to differences in O₃ sensitivity [14,15]. In addition, many studies of O₃'s effects on *Glycine max* L., *Raphanus sativus* L., and *Spinacia oleracea* L. showed that the prominent alterations caused by O₃ exposure were thylakoid swelling and an increase in plastoglobuli after O₃ entered into leaves through stomata [16–18]. To our knowledge, the effects of elevated O₃ on leaf morphology and ultrastructure in rice are unknown.

Since security certificates for two varieties of transgenic insect-resistant rice, Huahui1 and Bt Shanyou 63 (Bt-SY63), were officially awarded in China in 2009, concerns regarding the potential ecological and environmental risk of transgenic rice have been raised. Our recent trial confirmed that photosynthetic parameters changed to a greater extent in the rice leaves of Bt-SY63 compared with its non-transgenic counterpart Shanyou 63 (SY63) under O₃-FACE (O₃-Free Air Concentration Enrichment) conditions [19]. Moreover, the results of this trial suggested that Bt-SY63 is more sensitive to elevated [O₃] than SY63, with the former variety coupled with great volatility [19]. The objective of this study was to investigate changes in the leaf surface morphology and internal ultrastructure of Bt-SY63 and SY63 under O₃ free air-controlled enrichment conditions in order to determine the different responses generated by transgenic rice and its non-transgenic traditional counterpart when they are exposed to elevated tropospheric O₃.

Materials and Methods

Experimental site and O₃-FACE system

The experiment was conducted at O₃-FACE facilities, located in the town of Xiaoji, Jiangdu county, Jiangsu province, China (119°42'0"E, 32°35'5"N), in a continuous rotation ecosystem with rice and wheat from June 2010 to September 2010. The site is in a subtropical marine climate with a mean annual precipitation of 980 mm, mean annual evaporation >1100 mm, annual mean air temperature of 14.9°C, total annual sunshine time >2100 h, and a frostless period >220 days.

The O₃-FACE system has six plots, of which three were under ambient [O₃] (A-O₃) and three were under elevated [O₃] (E-O₃). Each E-O₃ plot was enclosed with a 14 m diameter octagonal ring that consisted of eight 6-m-long ABS horizontal pipes. In the E-O₃ plots, O₃ gas was injected into the air via tiny holes (0.3 mm in diameter) in the ABS pipes at about 0.5 m above the canopy from 9:00 a.m. to sunset in the sunshine, and the target [O₃] was maintained at 50% higher than the ambient [O₃], controlled by a computer. Each of the E-O₃ plots was separated from the other plots by at least 70 m to avoid cross-contamination. In the A-O₃ plots, plants were grown under ambient [O₃] without the ring structures. For more details of the O₃ fumigation system, see 20. Fumigation began on 2

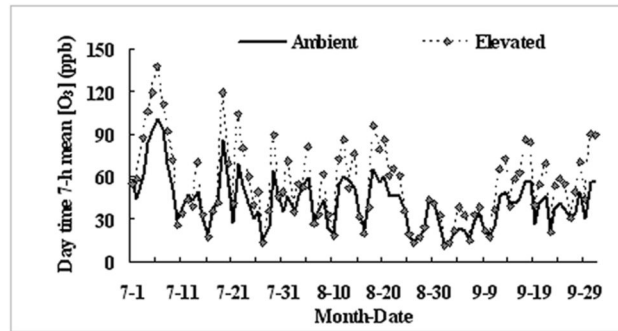


Figure 1. Changes in [O₃] in ambient and elevated plots in 2010.

doi: 10.1371/journal.pone.0082199.g001

July 2010 in the E-O₃ plots in this study. The changes in [O₃] in the elevated and ambient plots during the entire experimental period in 2010 are shown in Figure 1. The experiment was permitted by the Biosafety Committee of Nanjing Institute of Environmental Sciences, Ministry of Environmental Protection of China as well as the Institute of Soil Sciences, Chinese Academy of Sciences.

Plant materials and crop cultivation

The two rice varieties, Bt-SY63 and SY63, used in this experiment were kindly provided by Huazhong Agricultural University. Bt-SY63 possesses a fusion gene derived from Cry1Ab and Cry1Ac, which is primarily used to control lepidopteron pests such as rice-stem borer. Rice seeds were sown on 13 June 2010. The seedlings were manually transplanted into plastic pots (25 cm tall × 23 cm long × 18 cm wide) on 23 June, two plants per pot, and then were placed randomly in E-O₃ and A-O₃ plots. The plastic pots were in a row (equivalent to 24 pots·m⁻²) and semi-buried, and the water level was maintained 2–3 cm above the soil surface until the end of the experiment. During the pollen stage of the Bt-SY63, from 8 August to 20 August, the rice spikes were covered by translucent paper bags to prevent the pollens from dispersing.

Morphology measurement

The leaf area meter (AM100, ADC, UK) was adopted to measure the leaf length (cm), leaf width (cm) and leaf area (cm²) values from the second upper fully expanded functional leaf of each variety in each plot (equivalent to each treatment) on 64-DAS (16 August, 44 d of O₃ treatment), 85-DAS (6 September, 65 d of O₃ treatment) and 102-DAS (23 September, 82 d of O₃ treatment), respectively. The total values of 10 leaves from 10 plants per treatment were averaged as the mean leaf length, width and area. The leaf thickness was measured according to the method described in [21].

The stomatal length (μm) and stomatal density (number·cm⁻²) from the second functional leaf were measured as follows: patches of about 2 cm² around the midpoint of the leaf blade were removed from the second upper functional leaves, adhered on the specimen surface, and then observed and

photographed under a “HITACHI Table Top Scanning Microscope TM-1000”. Stomatal density and stomatal length were calculated from five fully expanded leaves per treatment. On each leaf, five random areas were examined at ×400 magnification for stomatal density, and three random areas were examined at ×1000 magnification for stomatal length.

Transmission electron microscopy

The same leaves used to determine stomatal densities and stomatal length were used for electron microscopy. The middle part of the leaves away from the midrib was cut into small pieces (about 1.5 mm²). These fragments were fixed in a bottle with 5% glutaraldehyde in 0.1 M sodium phosphate buffer, pH 7.0. After 4 h at 0–4°C and three rinses with buffer, the samples were post-fixed in 2% OsO₄ and then rinsed again with the same buffer for the same amount of time. Thereafter, the samples were dehydrated in an acetone series (30%, 50%, 70%, 90%; 30 min each) and 100% acetone (two times, 30 min each) and embedded in Epon 812 resin. The samples were cut into thin sections of approximately 50–70 μm with a LKB-V ultramicrotome (Sweden), and thin sections were stained on copper grids with lead citrate and uranyl acetate before being examined by a Hitachi 600-A-2 (Japan) transmission electron microscope operated at 75 kV.

Ten representative mesophyll cell sections at ×5000 magnification (2 μm) from each of the three replicate plants per sampling time per treatment were analyzed for cell wall thickness, sectional areas of mesophyll cells, chloroplasts, starch grains and plastoglobuli with Image-Pro Plus 6.0 (Media Cybernetics, MD, USA). With respect to the sectioning of three-dimensional organelles, the proportions of total chloroplast area in the entire cell area (%) (CCAP), total plastoglobule area in the entire cell area (%) (PCAP), and total starch grain area (%) (SCAP) in the entire cell area were calculated as the final result in order to minimize measurement errors.

Statistical analyses

Data were analyzed using SPSS software (SPSS Inc., version 16.0). Data were first normalized and then checked for normal distributions (Kolmogorov–Smirnov test) and homogeneity of variance (Levene's test). The normalizing transformation succeeded to improve the non-normality in the data. The repeated measures procedure of the general linear model (making the concentration of O₃ and rice variety as independent factors, growth stage as repeated measures factor), a two-way ANOVA with repeated measures, was applied in the following characteristics of rice: leaf length, leaf width, leaf area, leaf thickness and mesophyll cell wall thickness. The repeated measures procedure of the general linear model failed to be employed in the analysis of the three parameters CCAP, PCAP and SCAP owing to severely degenerated chloroplasts at 102-DAS, which led to an inability to calculate the three abovementioned parameters. As a result, a two-way ANOVA without repeated measures was used to determine the effects of O₃, variety and their interactions on CCAP, PCAP and SCAP in every separate growth stage.

Results

Leaf length, leaf width and leaf area

The repeated measures procedure of the general linear model showed that significant differences were observed in leaf length ($P < 0.05$) and leaf area ($P < 0.05$) between Bt-SY63 and SY63, while no significant difference in leaf width ($P > 0.05$) was found between the two varieties (Table 1). The leaf length and leaf area of Bt-SY63 were significantly ($P < 0.05$) smaller than those of SY63. Time (growth stage) showed a significant effect on leaf length ($P < 0.05$), that is leaf length reduced significantly along with leaf senescence. No significant time effects ($P > 0.05$) were found on leaf width and leaf area. E-O₃ had no significant effects ($P > 0.05$) on the leaf length, leaf width and leaf area of the two rice genotypes. The effects of the interaction between variety and O₃, the interaction between time and O₃, the interaction between time and variety, and the combined effect of the three factors were all non-significant ($P > 0.05$) on the leaf length, leaf width and leaf area of the two rice genotypes.

Stomatal length and stomatal density

Similar to the observation of ANOVA results in leaf width, differences ($P > 0.05$) were observed for the stomatal length and stomatal density of both Bt-SY63 and SY63 (Table 2).

Leaf thickness

As shown in Table 3, neither O₃ nor variety showed significant influence ($P > 0.05$) on leaf thickness. No significant effects ($P > 0.05$) of time, the interaction between time and O₃, the interaction between time and variety, and the combined effect of the three factors were found on the leaf thickness of both Bt-SY63 and SY63. Variety and O₃ showed significant interaction on leaf thickness ($P < 0.05$), which indicated that leaf thickness response to ozone was different for the two rice genotypes. That is, E-O₃ increased the leaf thickness of Bt-SY63 by 4.5% relative to A-O₃, whereas decreased that of SY63 by 4%.

Changes in leaf ultrastructure

The repeated measures procedure of the general linear model confirmed that the cell wall thickness of the mesophyll of Bt-SY63 was significantly ($P < 0.05$) smaller than that of SY63 (Table 3). The cell wall thickness of both Bt-SY63 and SY63 was not significantly affected ($P > 0.05$) by E-O₃. Although the effects of time, the interaction between variety and O₃, the interaction between time and O₃, and the interaction between time and variety were all non-significant ($P > 0.05$), the combined effect of variety, O₃ and time was significant ($P < 0.05$) on cell wall thickness.

As shown in Table 4, at 64-DAS, E-O₃ resulted in a significant increase in the proportion of total plastoglobule area in the entire cell area (%) (PCAP) ($P < 0.01$) and a significant decrease in the proportion of total starch grain area in the entire cell area (%) (SCAP) ($P < 0.05$), while no significant O₃ effect ($P > 0.05$) was detected in the proportion of total chloroplast area in the entire cell area (%) (CCAP) of both Bt-

Table 1. Changes in leaf length, leaf width and leaf area (Means ± S.D.) in Bt-SY63 and SY63 under ambient and elevated O₃.

Variety	Treatment	Leaf length (cm)			Leaf width (cm)			Leaf area (cm ²)		
		64-DAS	85-DAS	105-DAS	64-DAS	85-DAS	105-DAS	64-DAS	85-DAS	105-DAS
Bt-SY63	A-O ₃	48.27±1.38	47.43±2.29	46.95±2.71	1.62±0.29	1.84±0.09	1.84±0.03	58.68±11.54	65.88±5.76	64.68±3.25
	E-O ₃	52.11±3.61	46.60±1.72	49.37±3.15	1.84±0.15	1.89±0.13	1.87±0.08	72.52±9.98	66.16± 5.76	69.48±7.35
SY63	A-O ₃	55.23±4.24	54.89±1.21	46.47±4.09	1.89±0.08	1.96±0.04	1.81±0.08	77.96± 8.88	80.63±3.30	67.54±6.60
	E-O ₃	54.17±4.02	51.19±6.87	49.07±3.40	1.84±0.14	1.88±0.11	1.83±0.10	74.56±0.25	72.50±13.16	63.36±8.17
Effect		Significance of repeated measures of general linear model								
		Leaf length			Leaf width			Leaf area		
O ₃		n.s.			n.s.			n.s.		
Variety		*			n.s.			*		
O ₃ × variety		n.s.			n.s.			n.s.		
Time		*			n.s.			n.s.		
Time × O ₃		n.s.			n.s.			n.s.		
Time × variety		n.s.			n.s.			n.s.		
Time × O ₃ × variety		n.s.			n.s.			n.s.		

A-O₃, Ambient O₃; E-O₃, Elevated O₃. Mean values and standard deviation of ten replicates are presented.

ANOVA: * *p* < 0.05, n.s. = not significant.

doi: 10.1371/journal.pone.0082199.t001

Table 2. Changes in stomatal length and stomatal density (Means ± S.D.) in Bt-SY63 and SY63 under ambient and elevated O₃.

Variety	Treatment	Stomatal length (µm)			Stomatal density (number·cm ⁻²)		
		64-DAS	85-DAS	105-DAS	64-DAS	85-DAS	105-DAS
Bt-SY63	A-O ₃	21.3±2.0	22.0±1.6	22.7±1.1	4.7±0.3	4.5±0.3	3.6±0.6
	E-O ₃	22.7±1.3	23.5±1.2	23.2±1.8	4.1±0.3	4.3±0.2	3.6±0.8
SY63	A-O ₃	24.9±1.2	23.9±1.8	22.8±1.3	4.5±0.6	4.0±0.2	4.0±0.8
	E-O ₃	23.9±1.4	23.7±1.5	22.7±2.6	4.3±0.7	4.2±0.4	4.0±0.7
Effect		Significance of repeated measures of general linear model					
		Stomatal length			Stomatal density		
O ₃		n.s.			n.s.		
Variety		n.s.			n.s.		
O ₃ × variety		n.s.			n.s.		
Time		n.s.			n.s.		
Time × O ₃		n.s.			n.s.		
Time × variety		n.s.			n.s.		
Time × O ₃ × variety		n.s.			n.s.		

A-O₃, Ambient O₃; E-O₃, Elevated O₃. Mean values and standard deviation of ten replicates are presented.

ANOVA: * *p* < 0.05, ** *p* < 0.01, n.s. = not significant

doi: 10.1371/journal.pone.0082199.t002

SY63 and SY63. No significant variety effects (*P* > 0.05) were found in PCAP and SCAP, whereas varieties differed significantly (*P* < 0.05) in CCAP. The effects of the interaction between O₃ and variety were all non-significant (*P* > 0.05) in CCAP, PCAP and SCAP.

In addition, at 64-DAS, E-O₃ resulted in swollen thylakoids (Figure 2F), whole fuzzy chloroplasts, and rough mesophyll cell wall (shown as an arrowhead) in Bt-SY63 (Figure 2B) compared with those observed under A-O₃ (Figure 2A and 2E).

However, in SY63, the chloroplasts were still clear under E-O₃ (Figure 2D and 2H) compared with those observed under A-O₃ (Figure 2C and 2G). In addition, Bt-SY63 under E-O₃ had fuzzier whole chloroplasts than SY63 under E-O₃.

At 85-DAS, as shown in Table 4, no significant variety effect (*P* > 0.05) was detected in CCAP, while significant variety effects were found in PCAP (*P* < 0.05) and SCAP (*P* < 0.01). E-O₃ resulted in significant increases in CCAP (*P* < 0.01) and PCAP (*P* < 0.05), and a significant decrease in SCAP (*P* <

Table 3. Changes in leaf thickness and mesophyll cell wall thickness (Means ± S.D.) in Bt-SY63 and SY63 under ambient and elevated O₃.

Variety	Treatment	Leaf thickness (µm)			Mesophyll cell wall thickness (µm)		
		64-DAS	85-DAS	105-DAS	64-DAS	85-DAS	105-DAS
Bt-SY63	A-O ₃	273.01±8.16	283.76±11.37	299.08±15.71	0.19±0.01	0.24±0.02	0.22±0.03
	E-O ₃	301.97±8.31	295.91±2.03	296.55±22.67	0.26±0.05	0.22±0.05	0.20±0.01
SY63	A-O ₃	303.97±16.26	304.08±21.26	296.40±12.48	0.25±0.02	0.22±0.03	0.24±0.02
	E-O ₃	292.57±6.72	286.59±1.75	289.13±10.14	0.23±0.02	0.25±0.01	0.23±0.02
Effect		Significance of repeated measures of general linear model					
		Leaf thickness			Mesophyll cell wall thickness		
O ₃		n.s.			n.s.		
Variety		n.s.			*		
O ₃ × variety		*			n.s.		
Time		n.s.			n.s.		
Time × O ₃		n.s.			n.s.		
Time × variety		n.s.			n.s.		
Time × O ₃ × variety		n.s.			*		

A-O₃, Ambient O₃; E-O₃, Elevated O₃. Mean values and standard deviation of ten replicates are presented.

ANOVA: * *p* < 0.05, ** *p* < 0.01, n.s. = not significant.

doi: 10.1371/journal.pone.0082199.t003

Table 4. Ultrastructural changes (Means ± S.D.) in Bt-SY63 and SY63 under ambient and elevated O₃ (CCAP: the proportions of total chloroplast area in the entire cell area (%); PCAP: the proportion of total plastoglobule area in the entire cell area (%); SCAP: the proportion of total starch grain area in the entire cell area (%)).

Variety	Treatment	CCAP (%)			PCAP (%)			SCAP (%)		
		64-DAS	85-DAS	102-DAS	64-DAS	85-DAS	102-DAS	64-DAS	85-DAS	102-DAS
Bt-SY63	A-O ₃	47.53±7.47	36.10±4.56	None	0.45±0.05	1.45±0.54b	1.17±0.70	3.53±1.23	0.93±0.18	0.36±0.32
	F-O ₃	63.42±10.82	77.44±8.92	None	1.03±0.19	4.03±2.13a	none	1.80±1.10	0.41±0.25	none
SY63	A-O ₃	76.18±2.68	46.01±7.80	25.76±0.15	0.57±0.29	0.38±0.05b	0.27±0.20	5.85±3.20	1.59±0.29	0.64±0.03
	F-O ₃	72.28±12.31	56.79±7.69	32.91±11.8	1.62±0.25	2.00±0.32ab	1.02±0.55	2.32±1.60	1.09±0.06	1.09±0.13
Significance of two-way ANOVA										
O ₃		n.s.	**	none	**	*	none	*	**	none
Variety		*	n.s.	none	n.s.	*	none	n.s.	**	none
O ₃ × variety		n.s.	**	none	n.s.	*	none	n.s.	*	none

A-O₃, Ambient O₃; E-O₃, Elevated O₃. Mean values and standard deviation of ten replicates are presented.

Two-way ANOVA: * *p* < 0.05, ** *p* < 0.01, n.s. = not significant.

None means an inability to determine the effect of the parameter owing to severely degenerated chloroplasts at this growth stage

doi: 10.1371/journal.pone.0082199.t004

0.01) of both Bt-SY63 and SY63. The effects of the interaction between O₃ and variety were all significant in CCAP (*P* < 0.01), PCAP (*P* < 0.05) and SCAP (*P* < 0.05). This result indicates that the sensitivity of the three abovementioned parameters to O₃ is significantly different between the two rice genotypes. E-O₃ increased CCAP in Bt-SY63 and SY63 by 114.5% and 23.4%, respectively, comparing to A-O₃. The corresponding increases in PCAP were 177.9% and 44.9%, respectively. E-O₃ decreased SCAP in Bt-SY63 and SY63 by 55.9% and 31.4%, respectively, comparing to A-O₃.

As shown in the ultrastructural images on 85-DAS in Figure 3, compared to those on 64-DAS, Bt-SY63 (Figure 3A) and SY63 (Figure 3C) under A-O₃ did not exhibit any abnormalities at the ultrastructural level of their cellular structure except for

smaller electronic density; That is, Bt-SY63 and SY63 under A-O₃ still showed an uninjured chloroplast envelope and nuclear membrane and other distinct organelles. E-O₃ produced injured nuclear membranes in Bt-SY63 (Figure 3B, black arrowhead) and SY63 (Figure 3D, black arrowhead) and swollen thylakoids (Figure 3H) and whole fuzzy chloroplasts (Figure 3D) in SY63. In addition, the chloroplasts in Bt-SY63 (Figure 3B) were fuzzier than those in SY63 (Figure 3D) under E-O₃. However, grana in chloroplasts in Bt-SY63 and SY63 were still identified under both air conditions (Figure 3E, Figure 3F, Figure 3G, Figure 3H).

The 102-DAS sampling time was close to harvesting time. Compared to those at 85-DAS, for Bt-SY63 and SY63 under A-O₃ at this stage, cells and chloroplasts began to degenerate

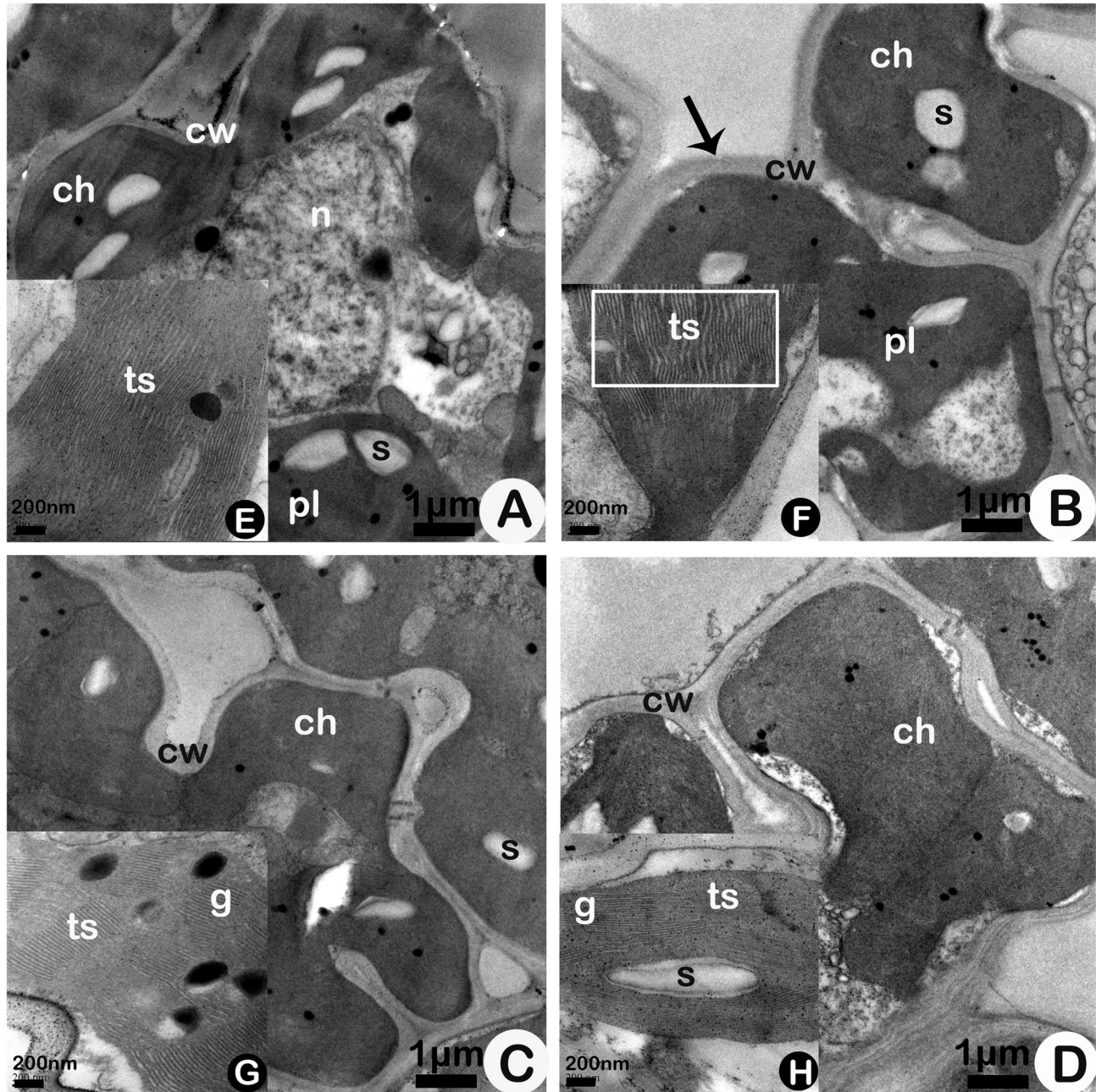


Figure 2. Ultrastructures of mesophyll cells (A, B, C, D) and chloroplasts (E, F, G, H) of transgenic rice Bt Shanyou 63 (Bt-SY63) (A, B) and its non-transgenic counterpart Shanyou 63 (SY63) (C, D) at 64-DAS (Days after seeding) in elevated O₃ (B, D) and ambient O₃ (A, C) conditions. The black arrowhead (in B) indicates the thickened mesophyll cell wall of Bt-SY63 under elevated O₃. The white-bordered rectangle indicates a swollen thylakoid in Bt-SY63 under elevated O₃. Abbreviations: ch, chloroplast; cw, cell wall; pl, plastoglobuli; s, starch deposits; ts, thylakoid structures; g, grana; n, nucleolus. Bar: A, B, C, D - 1 μ m; E, F, G, H - 200 nm.

doi: 10.1371/journal.pone.0082199.g002

differently, thylakoids became swollen (Figure 4E, Figure 4G), the nuclear membrane became damaged in Bt-SY63 (Figure 4A, short arrow), and chloroplast envelope injury was present (Figure 4E, long arrow) in Bt-SY63. The CCAP of Bt-SY63

could not be measured because of the injured chloroplast envelope under A-O₃, while SY63 (Figure 4C) showed uninjured chloroplast envelope under A-O₃. However, the most prominent alterations caused by E-O₃ in Bt-SY63 (Figure 4B)

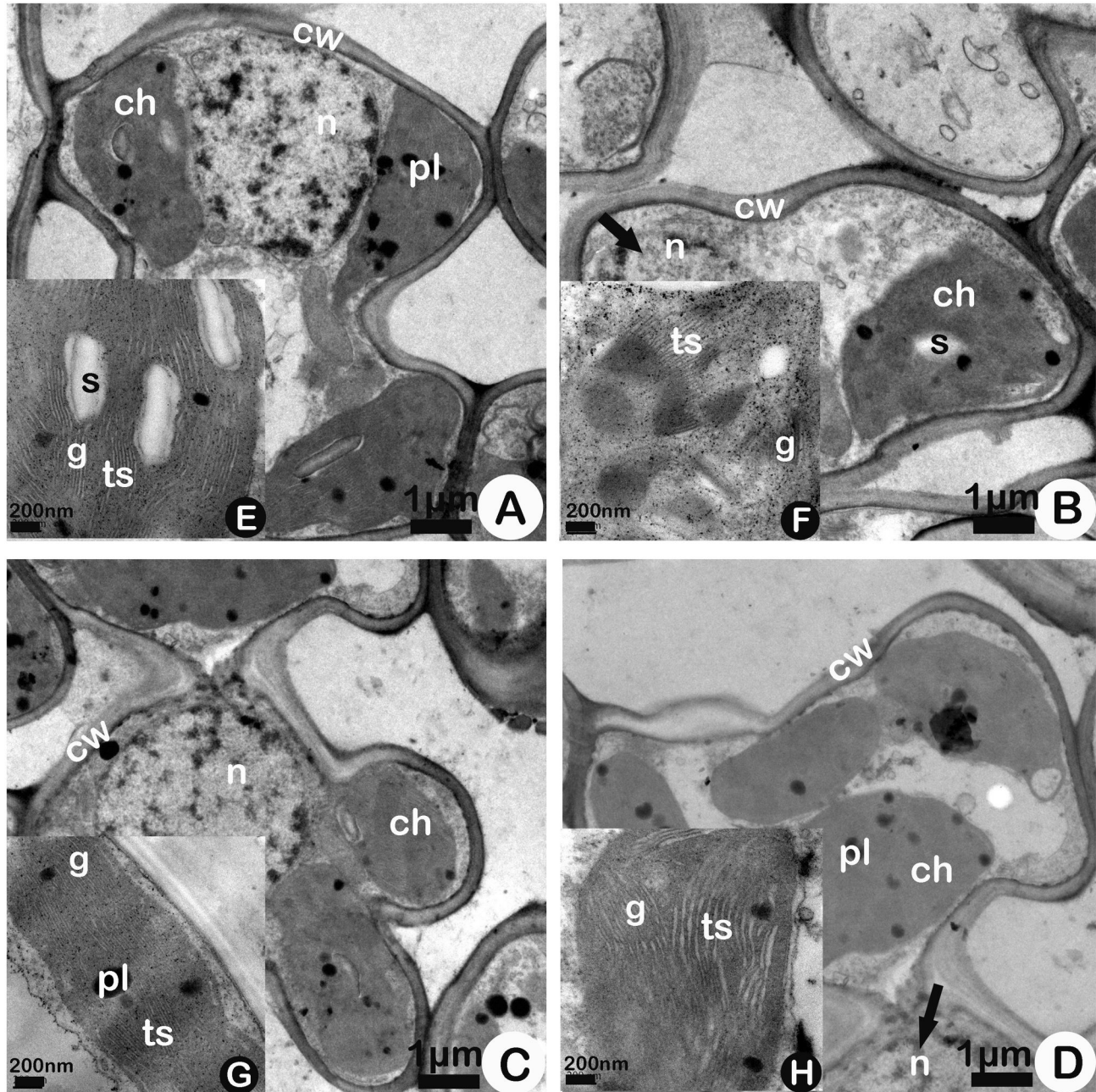


Figure 3. Ultrastructures of mesophyll cells (A, B, C, D) and chloroplasts (E, F, G, H) of transgenic rice Bt Shanyou 63 (Bt-SY63) (A, B) and its non-transgenic counterpart Shanyou 63 (SY63)(C, D) at 85-DAS (Days after seeding) in elevated O₃ (B, D) and ambient O₃ (A, C) conditions. The black arrowhead indicates the injured nuclear membranes of Bt-SY63 (in B) and SY63 (in D) under elevated O₃. Abbreviations: ch, chloroplast; cw, cell wall; pl, plastoglobuli; s, starch deposits; ts, thylakoid structures; g, grana; n, nucleolus. Bar: A, B, C, D - 1 μm; E, F, G, H - 200 nm.

doi: 10.1371/journal.pone.0082199.g003

were severely degenerated chloroplasts, which occupied the entire cell and presented a patchy distribution. Under E-O₃, the abnormal proliferation of swollen thylakoids resulted in severely degenerated chloroplasts in Bt-SY63. Moreover, these thylakoids were not organized in grana, as observed for Bt-

SY63 under E-O₃ (Figure 4F), and were often accompanied by increased stroma granulation (which led to an inability to calculate the three abovementioned parameters). Some of these alterations in Bt-SY63, such as thylakoid swelling, stroma granulation, and unidentified grana, also appeared in SY63

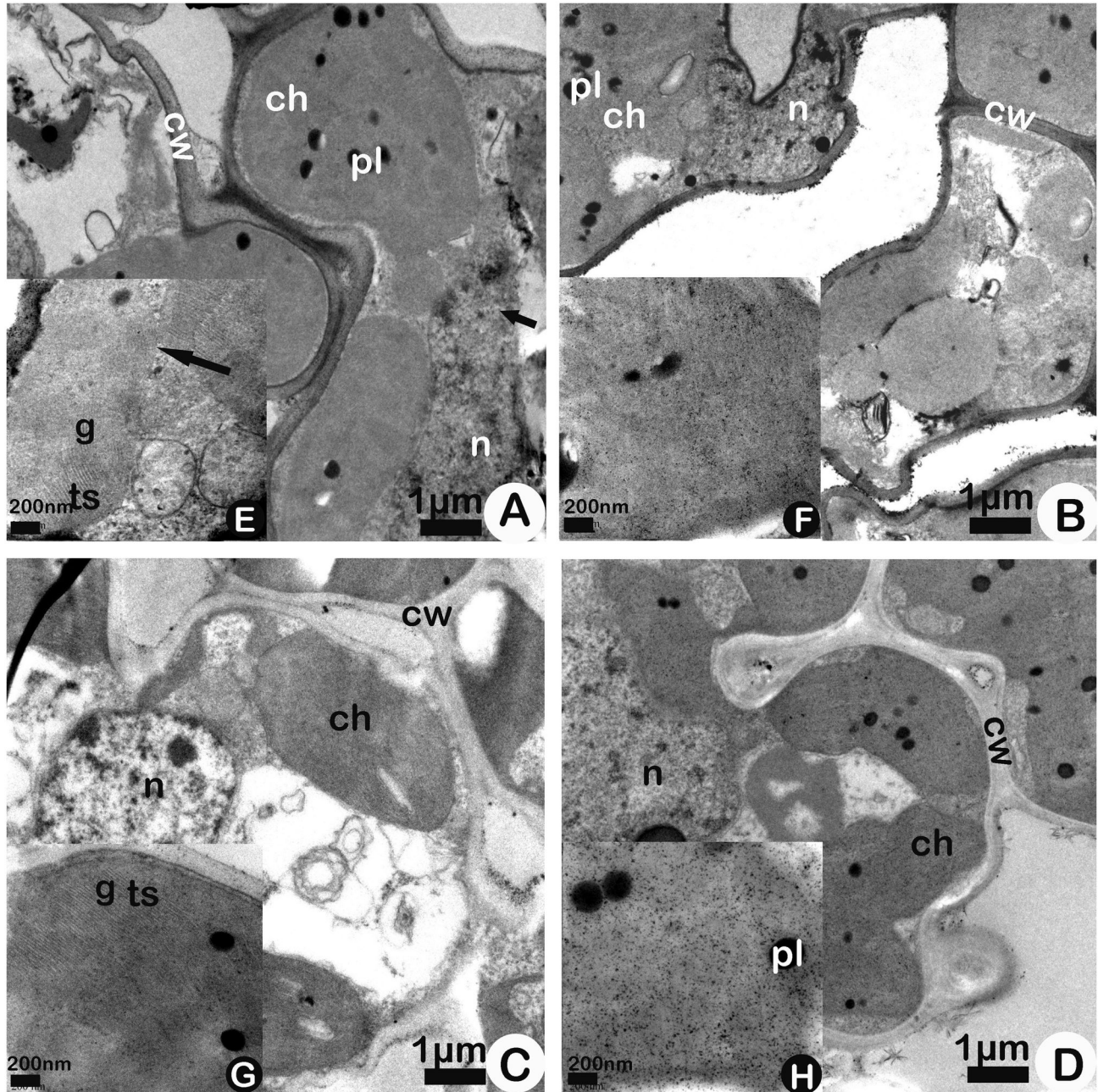


Figure 4. Ultrastructures of mesophyll cells (A, B, C, D) and chloroplasts (E, F, G, H) of transgenic rice Bt Shanyou 63 (Bt-SY63) (A, B) and its non-transgenic counterpart Shanyou 63 (SY63)(C, D) at 102-DAS (Days after seeding) in elevated O₃ (B, D) and ambient O₃ (A, C) conditions. Abbreviations: ch, chloroplast; cw, cell wall; pl, plastoglobuli; s, starch deposits; ts, thylakoid structures; g, grana; n, nucleolus. Bar: A, B, C, D - 1 μm; E, F, G, H - 200 nm.
doi: 10.1371/journal.pone.0082199.g004

(Figure 4D and Figure 4H) under E-O₃, but the chloroplasts of SY63 under E-O₃ still exhibited a certain shape. A two-way ANOVA without repeated measures failed to be employed in the analysis of the three parameters CCAP, PCAP and SCAP owing to severely degenerated chloroplasts at this stage, which

led to an inability to calculate the three abovementioned parameters.

Discussion

Although many authors have reported the effects of E-O₃ on yield, physiological and biochemical responses (particularly photosynthetic characteristics), and reproduction in rice [4,10,12,19], very little research has studied the effect of E-O₃ on leaf structure. To our knowledge, no data are available on the effects of E-O₃ on the leaf structure of transgenic rice. Because of the rapid increase in planted areas of transgenic crops worldwide, more attention should be paid to assessing the ecological and environmental risk of transgenic crops under the projected future E-O₃ climate. Therefore, in this study, we conducted preliminary studies on changes in the leaf surface structure and inner ultrastructure in Bt-SY63 and SY63 under E-O₃.

Surface structure responses of Bt-SY63 and SY63 to elevated O₃

Our studies found that there were no significant differences in stomatal length, stomatal density and leaf thickness between Bt-SY63 and SY63. However, the leaf area of Bt-SY63 was smaller than that of SY63 owing to smaller leaf length (no significant difference in leaf width between Bt-SY63 and SY63). Shu et al.[22] and Kim et al.[23] reported that the insertion of the cry1Ab and/or cry1Ac genes into the rice genome caused phenotypic variations such as reduced plant height and shorter root length. The results of the present study indicate that the incorporation of cry1Ab/Ac into SY63 can result in unintentional changes in, at least, leaf length and leaf area.

Compared to the A-O₃ condition, the leaf length, leaf width, leaf area, stomatal length and stomatal density of Bt-SY63 and SY63 were not significantly affected by E-O₃. However, the significant combined effect of O₃ and variety on leaf thickness suggested the response of transgenic Bt rice to E-O₃ with respect to leaf thickness was different from that of its non-transgenic isoline: the leaf thickness of Bt-SY63 increased in response to E-O₃, while that of SY63 decreased. The leaf thickness of SY63 in response to E-O₃ is consistent with the response of cotton (*Gossypium hirsutum* L) and birch (*Betula pendula*) under E-O₃ [24,25], whereas the response of Bt-SY63 observed in this study was opposite to the results of cotton and birch. The response of transgenic Bt rice to E-O₃ was different from that of conventional rice with respect to leaf thickness, which may be attributed to the incorporation of the transgenes.

Responses of the leaf ultrastructure of Bt-SY63 and SY63 to elevated O₃

The cell wall thickness of the mesophyll of Bt-SY63 was smaller than that of SY63, which was probably attributed to the incorporation of the transgenes. E-O₃ had no significant effect on the cell wall thickness of the two rice genotypes.

Damaged nuclear envelopes and swollen thylakoids appeared at a later stage (102-DAS) in the two rice genotypes under A-O₃. Moreover, the chloroplast envelope of Bt-SY63 but not SY63 was injured on 102-DAS, and part of the chloroplasts of the two varieties remained in the grana under A-O₃. Under E-O₃, the nuclear membrane of both Bt-SY63 and SY63 became damaged on 85-DAS, swollen thylakoids appeared on 64-DAS

for Bt-SY63 and on 85-DAS for SY63 under E-O₃ instead of on 102-DAS for the two rice genotypes under A-O₃. Severe damage caused by O₃ to the chloroplast structure of the two varieties was noted on 102-DAS, concomitant with the disintegration of the grana. Furthermore, the negative effect of O₃ on chloroplasts was more prominent for Bt-SY63 compared to SY63: mesophyll cells of Bt-SY63 contained completely disintegrated and metamorphous chloroplasts, while the chloroplasts of SY63 still maintained a certain shape. It is well known that the swelling of thylakoids is also a typical feature during leaf senescence. Thus, thylakoid swelling is thought to result from stress-induced senescence [26]. Earlier swelling of thylakoids and damage to the nuclear membrane, accompanied by a breakdown of chloroplast grana, suggest that E-O₃ accelerated the leaf senescence of the two genotypes rice. The swelling of thylakoids directly resulted in the swelling of chloroplasts, and then resulted in the increase of CCAP ($P > 0.05$) on 64-DAS and subsequently significant increase of CCAP ($P < 0.01$) on 85-DAS in E-O₃ versus A-O₃. In fact, the increase of CCAP at these two stages is likely not an example of an increase in active photosynthetic membranes and, instead, may be a result of membrane deterioration. The markedly larger volatility in CCAP of Bt-SY63 (114.5%) compared with SY63 (23.4%) as well as the significant interaction ($P < 0.01$) between O₃ and variety in CCAP suggested higher O₃ sensitivity of Bt-SY63. Furthermore, the more severe breakdown of chloroplasts and earlier appearance of swollen thylakoids in Bt-SY63 in comparison to SY63 under E-O₃ indicated that the injury induced by E-O₃ for Bt-SY63 was greater than that for SY63. These differences may result for the following reasons: (1) These differences may be related to the amount of mesophyll tissues in the two rice genotypes, such as longer leaf length and larger leaf area in SY63 versus Bt-SY63. A thicker and larger rice leaf that contains more photosynthetic apparatus per unit area [27] would indicate greater photosynthesis potential, which suggests a greater ability to disseminate gases within the leaf as well as a greater potential detoxifying capacity [26]. (2) Bt-SY63 itself undergoes earlier senescence than SY63, which was supported by the onset of earlier heading in Bt-SY63 than in SY63 by 5-7 d under A-O₃.

Plastoglobuli are thought to be lipid components of membranes that are synthesized but not utilized in thylakoid biosynthesis [28]. It has been proposed that plastoglobuli are composed of the products of membrane breakdown [29]. Significant increases in PCAP both on 64-DAS and on 85-DAS were caused by E-O₃, suggesting that E-O₃ accelerated the thylakoid degradation of the two genotypes, Bt-SY63 and SY63 [30]. Moreover, The markedly larger volatility in PCAP of Bt-SY63 (177.9%) compared with SY63 (44.9%) as well as the significant interaction ($P < 0.05$) between O₃ and variety in PCAP suggested that Bt-SY63 is more sensitive to E-O₃ than SY63. In addition, altered thylakoid membrane structure may directly affect membrane functionality and could have deleterious effects on the photosynthetic activities of chloroplast [31]. Therefore, in the present experiment, the thylakoid membrane degradation induced by E-O₃ could lead to deterioration in the photosynthetic activities of the chloroplasts of the two genotypes rice. This supposition is consistent with

the data that 'E-O₃ led to a significant decline in the Pn of both Bt-SY63 and SY63 in comparison with A-O₃' [19], which is in accord with the results of our present study.

Starch accumulation may indicate an increase in the photosynthetic activity and/or the inhibition of carbohydrate transport out of the leaves to other organs. The decline in the amount of starch grains (SCAP) as the photosynthate for both Bt-SY63 and SY63 under E-O₃ could be attributable to the decrease in the photosynthetic activities of the chloroplasts of both the genotypes caused by E-O₃ (from [19]). Moreover, the more prominent decline of SCAP in Bt-SY63 (55.9%) compared with SY63 (31.4%) indicates greater damage to Bt-SY63 than to SY63 under the same O₃ stress. Moreover, a significant combined effect of O₃ and variety on SCAP ($P < 0.05$) at 85-DAS indicated that Bt-SY63 was more susceptible to E-O₃ than SY63.

Conclusions

In summary, the results of our study suggest that the incorporation of cry1Ab/Ac into SY63 could induce unintentional changes in some parts of morphology of plant, including leaf length, leaf area and mesophyll cell wall thickness. Furthermore, E-O₃ induced opposite changes with

respect to the leaf thickness of the two genotypes of rice. E-O₃ had no significant effects on leaf length, leaf width, leaf area, stomatal length, stomatal density and cell wall thickness for both Bt-SY63 and SY63. E-O₃ caused a significant increase in PCAP and a significant decrease in SCAP accompanied by both swollen chloroplast thylakoids and stroma granulation for the two genotypes, and the grana disappeared during the last growth stage. These results are consistent with previous observations of the effects of O₃ reported for *Pinus sylvestris* L., *Picea abies* L. and others [16,28,32,33]. However, compared with SY63, E-O₃ resulted in the early swelling of chloroplast thylakoids, greater breakdown of chloroplasts as well as markedly larger volatility in CCAP, PCAP and SCAP in Bt-SY63 versus in SY63. These results suggest that Bt-SY63 is more sensitive to E-O₃ than SY63 with the former coupled with greater damage.

Author Contributions

Conceived and designed the experiments: CYL BL QZ JGZ ZMH. Performed the experiments: CYL CHL. Analyzed the data: CYL XGL BL ZMH. Contributed reagents/materials/analysis tools: CYL BL MZH WJS. Wrote the manuscript: CYL BL.

References

- Ashmore M, Toet S, Emberson L (2006) Ozone—a significant threat to future world food production? *New Phytol* 170: 201–204. doi:10.1111/j.1469-8137.2006.01709.x. PubMed: 16608445.
- Emberson L, B ker P, Ashmore M, Mills G, Jackson L et al. (2009) A comparison of North American and Asian exposure–response data for ozone effects on crop yields. *Atmospheric Environment* 43: 1945–1953. doi:10.1016/j.atmosenv.2009.01.005.
- Avnery S, Mauzerall DL, Liu J, Horowitz LW (2011) Global crop yield reductions due to surface ozone exposure: 1. Year 2000 crop production losses and economic damage. *Atmospheric Environment* 45: 2284–2296. doi:10.1016/j.atmosenv.2010.11.045.
- Wang Y, Yang L, Kobayashi K, Zhu J, Chen CP et al. (2012) Investigations on spikelet formation in hybrid rice as affected by elevated tropospheric ozone concentration in China. *Agriculture, Ecosystems and Environment* 150: 63–71. doi:10.1016/j.agee.2012.01.016.
- Fiscus EL, Booker FL, Burkey KO (2005) Crop responses to ozone: uptake, modes of action, carbon assimilation and partitioning. *Plant, Cell and Environment* 28: 997–1011. doi:10.1111/j.1365-3040.2005.01349.x.
- Ashmore M (2005) Assessing the future global impacts of ozone on vegetation. *Plant, Cell and Environment* 28: 949–964. doi:10.1111/j.1365-3040.2005.01341.x.
- Meehl GA, Stocker TF, Collins WD, Friedlingstein A, Gaye AT et al. (2007) Global climate projections. In: S Solomon, D Qin, M Man-ning, Z Chen, M Marquis. *Climate change 2007: The physical science basis. Contribution of working group I to the fourth assessment report of the intergovernmental panel on climate change*. Cambridge, UK/New York, USA, Cambridge University Press. pp. 747–845.
- Fitzgerald MA, McCouch SR, Hall RD (2009) Not just a grain of rice: the quest for quality. *Trends Plant Sci* 14: 133–139. doi:10.1016/j.tplants.2008.12.004. PubMed: 19230745.
- Mills G, Buse A, Gimeno B, Bermejo V, Holland M et al. (2007) A synthesis of AOT40-based response functions and critical levels of ozone for agricultural and horticultural crops. *Atmospheric Environment* 41: 2630–2643. doi:10.1016/j.atmosenv.2006.11.016.
- Feng ZZ, Kobayashi K (2009) Assessing the impacts of current and future concentrations of surface ozone on crop yield with meta-analysis. *Atmospheric Environment* 43: 1510–1519. doi:10.1016/j.atmosenv.2008.11.033.
- Kivim enp   M, Sutinen S, Karlsson PE, Selld n G (2003) Cell structural changes in the needles of Norway spruce exposed to long-term ozone and drought. *Ann Bot* 92: 779–793. doi:10.1093/aob/mcg202. PubMed: 14576076.
- Rai R, Agrawal M (2008) Evaluation of physiological and biochemical responses of two rice (*Oryza sativa* L.) cultivars to ambient air pollution using open top chambers at a rural site in India. *Sci Total Environ* 407: 679–691. doi:10.1016/j.scitotenv.2008.09.010. PubMed: 18962826.
- Sarkar A, Agrawal SB (2010) Elevated ozone and two modern wheat cultivars: An assessment of dose dependent sensitivity with respect to growth, reproductive and yield parameters. *Environmental and Experimental Botany* 69: 328–337. doi:10.1016/j.envexpbot.2010.04.016.
- Evans LS, Adamski JH, Renfro JR (1996) Relationships between cellular injury, visible injury of leaves, and ozone exposure levels for several dicotyledonous plant species at Great Smoky Mountains National Parks - Environmental and Experimental Botany 36: 229–237. doi:10.1016/0098-8472(96)01002-7.
- Ferdinand JA, Fredericksen TS, Kouterick KB, Skelly JM (2000) Leaf morphology and ozone sensitivity of two open pollinated genotypes of black cherry (*Prunus serotina*) seedlings. *Environmental Pollution* 108: 297–302. doi:10.1016/S0269-7491(99)00078-0. PubMed: 15092960.
- Reig-Arminana J, Calatayud V, Cervero J, Garcia-Breijo FJ, Ibars A, et al. (2004) Effects of ozone on the foliar histology of the mastic plant (*Pistacia lentiscus* L.). *Environ Pollut* 132: 321–331.
- Athanassios R (1980) Ozone effects on radish (*Raphanus sativus* L. cv. Cherry Belle): Gradient of ultrastructural changes. *Zeitschrift f r Pflanzenphysiologie* 97: 227–232.
- Miyake H, Furukawa A, Totosuka T, Maeda E (2006) Differential effects of ozone and sulphur dioxide on the fine structure of spinach leaf cells. *New Phytologist* 96: 215–228.
- Li CH, Zhu JG, Liu B, Zeng Q, Luo KJ et al. (2012) Photosynthetic characteristics of transgenic Bt (cry1Ab/Ac) rice under ozone free air controlled enrichment conditions. *Scientia Agricultura Sinica* 3: 002.
- Tang HY, Liu G, Han Y, Zhu JG, Kobayashi K (2011) A system for free-air ozone concentration elevation with rice and wheat: Control performance and ozone exposure regime. *Atmospheric Environment* 45: 6276–6282. doi:10.1016/j.atmosenv.2011.08.059.
- Li JW, Yang JP, Fei PP, Song JL, Li DS et al. (2009) Responses of rice leaf thickness, SPAD readings and chlorophyll a/b ratios to different nitrogen supply rates in paddy field. *Field Crops Research* 114: 426–432. doi:10.1016/j.fcr.2009.09.009.

22. Shu QY, Cui HR, Ye GY, Wu DX, Xia YW et al. (2002) Agronomic and morphological characterization of Agrobacterium-transformed Bt rice plants. *Euphytica* 127: 345-352. doi:10.1023/A:1020358617257.
23. Kim S, Kim C, Li W, Kim T, Li Y et al. (2008) Inheritance and field performance of transgenic Korean Bt rice lines resistant to rice yellow stem borer. *Euphytica* 164: 829-839. doi:10.1007/s10681-008-9739-9.
24. Oksanen E, Riikonen J, Kaakinen S, Holopainen T, Vapaavuori E (2005) Structural characteristics and chemical composition of birch (*Betula pendula*) leaves are modified by increasing CO₂ and ozone. *Global Change Biology* 11: 732-748. doi:10.1111/j.1365-2486.2005.00938.x.
25. Zouzoulas D, Koutroubas SD, Vassiliou G, Vardavakis E (2009) Effects of ozone fumigation on cotton (*Gossypium hirsutum* L.) morphology, anatomy, physiology, yield and qualitative characteristics of fibers. *Environmental and Experimental Botany* 67: 293-303
26. Günthardt-Goerg MS, Vollenweider P (2007) Linking stress with macroscopic and microscopic leaf response in trees: new diagnostic perspectives. *Environ Pollut* 147: 467-488. doi:10.1016/j.envpol.2006.08.033. PubMed: 17050053.
27. Peng S, Khush GS, Virk P, Tang Q, Zou Y (2008) Progress in ideotype breeding to increase rice yield potential. *Field Crops Research* 108: 32-38. doi:10.1016/j.fcr.2008.04.001.
28. Ladygin V (2004) Photosystem damage and spatial architecture of thylakoids in chloroplasts of pea chlorophyll mutants. *Biology Bulletin* 31: 268-276. doi:10.1023/B:BIBU.0000030148.35208.55.
29. Barton R (1966) Fine structure of mesophyll cells in senescing leaves of *Phaseolus*. *Planta* 71: 314-325. doi:10.1007/BF00396319.
30. Molas J (2002) Changes of chloroplast ultrastructure and total chlorophyll concentration in cabbage leaves caused by excess of organic Ni (II) complexes. *Environmental and Experimental Botany* 47: 115-126. doi:10.1016/S0098-8472(01)00116-2.
31. Chen GX, Liu SH, Zhang CJ, Lu CG (2004) Effects of drought on photosynthetic characteristics of flag leaves of a newly-developed super-high-yield rice hybrid. *Photosynthetica* 42: 573-578. doi:10.1007/S11099-005-0015-0.
32. Sutinen S, Koivisto L (1995) Microscopic structure of conifer needles as a diagnostic tool in the field. In: M MunawarO HänninenS RoyN MunawarL Kärenlampi. *Bioindicators of Environmental Health*. Amsterdam: SPB Academic. pp. 73-81
33. Holopainen T, Anttonen S, Palomäki V, Kainulainen P, Holopainen JK (1996) Needle ultrastructure and starch content in Scots pine and Norway spruce after ozone fumigation. *Canadian Journal of Botany* 74: 67-76. doi:10.1139/b96-010.