

Impact of NPM, TFF3 and TACC1 on the Prognosis of Patients with Primary Gastric Cancer

Aiping Ding^{1,3}, Wenwen Zhao^{1,3}, Xiaoli Shi¹, Ruyong Yao², Fang Zhou¹, Lu Yue¹, Shihai Liu², Wensheng Qiu^{1*}

1 Department of Oncology, Affiliated Hospital of Qingdao University School of Medicine, Qingdao, People's Republic of China, **2** Central Laboratory, Affiliated Hospital of Qingdao University School of Medicine, Qingdao, People's Republic of China, **3** Qingdao Cancer Hospital, Shibei City, Qingdao, Shandong Province, China

Abstract

Background: NPM, TFF3 and TACC1 are molecular markers that play important roles in cell differentiation. Herein, we investigated their prognostic impact in patients with primary gastric cancer (GC) and determined whether they could be used as markers of more aggressive gastric carcinomas by detecting the extent of expression in human gastric carcinoma samples.

Methodology/Principal Findings: Tumor tissue specimens from 142 GC patients were retrospectively retrieved and immunohistochemically evaluated. Correlations between NPM, TFF3 and TACC1 over-expression and clinicopathologic parameters, and their prognostic values were investigated with χ^2 , Kaplan-Meier method, and Cox uni- and multivariate survival models. NPM, TFF3 and TACC1 expression was significantly higher in GC patients with poorly differentiated histologic type than that in patients with well differentiated histologic type. NPM expression was significantly higher in patients with hepatic metastasis or recurrence than that in patients without metastasis. TFF3 expression was significantly higher in patients with positive lymph node metastasis than that in patients with negative lymph node metastasis. Age, lymph node metastasis, and TFF3 and TACC1 over-expression were significantly correlated with low survival ($P < 0.05$, $P < 0.05$, $P = 0.005$ and $P = 0.009$, respectively). Multivariate analysis showed that lymph node metastasis and TFF3 and TACC1 over-expression were independent prognostic factors.

Conclusions: TFF3 and TACC1 over-expression in epithelial cells of surgically resected GC tissues was an independent predictor of short survival in GC patients. The prognosis was poorer in patients with positive expression of both TFF3 and TACC1 than that in patients with positive expression of TFF3 or TACC1 alone, or with negative expression of TFF3 and TACC1.

Citation: Ding A, Zhao W, Shi X, Yao R, Zhou F, et al. (2013) Impact of NPM, TFF3 and TACC1 on the Prognosis of Patients with Primary Gastric Cancer. PLoS ONE 8(12): e82136. doi:10.1371/journal.pone.0082136

Editor: Yves St-Pierre, INRS, Canada

Received: August 16, 2013; **Accepted:** October 21, 2013; **Published:** December 16, 2013

Copyright: © 2013 Ding et al. This is an open-access article distributed under the terms of the Creative Commons Attribution License, which permits unrestricted use, distribution, and reproduction in any medium, provided the original author and source are credited.

Funding: This study is supported by Shandong Natural Science Foundation (2009HW024); Shandong Excellent Young Scientist Research Award Fund Project (2006BSB14114; B52010YY013). Shandong Tackle Key Problems in Science and Technology (2010GSF10245; Y2006C23). The funders had no role in study design, data collection and analysis, decision to publish, or preparation of the manuscript.

Competing Interests: The authors have declared that no competing interests exist.

* E-mail: qiuwenshengqd@163.com

These authors contributed equally to this work.

Introduction

Gastric cancer (GC) is the 4th most common cancer worldwide (7.8% of all cancers) and the 2nd leading cause of cancer death (9.7% of all cancer deaths) worldwide [1]. Although surgical resection is a viable option for early-stage GC patients, the control of GC progression remains difficult [2,3]. The pathogenesis of GC is associated with multiple factors. Recently, various biological factors involved in the pathogenesis of GC have been identified, but their clinical relevance has not been confirmed. A better understanding of the biological basis of GC would be helpful.

Nucleophosmin (NPM), also known as numatrin or NO38, is a member of the nucleoplasm (NPM) family. It is a nucleolar phosphoprotein constantly shuttling between the nucleolus and cytoplasm [4]. NPM exerts many functions, including generation of ribosomes, maintenance of genomic integrity, and transportation of proteins into the nucleus [5]. Therefore, the nucleophosmin/B23

gene (B23) seems to be involved in the control of cell growth, differentiation and programmed cell death [6,7]. NPM is overexpressed or mutated in human cancer cells, and is therefore a candidate prognostic marker in colon, ovarian and prostate cancers [8,9]. However, since most of these conclusions were prevalently based on indirect evidence with in vitro models, the exact contribution of NPM to tumorigenesis is far from clear largely due to a lack of appropriate clinical studies.

Trefoil factor 3 (TFF3) is a member of the TFF gene family, which encodes a series of small mucin-associated polypeptides [10]. TFF3 is mainly present in the gastrointestinal tract and other epithelial tissues, and is known to play an important role in maintaining mucosal integrity [11]. TFF3 is supposed to enhance cell migration through modulating functions of E-cadherin/catenin complexes [12]. Recently, TFFs have been reported to

Table 1. Antibody used in this study.

Antigen	Antibody	Clone	Catalogue no	Source	Dilution
NPM	Anti-Nucleophosmin antibody	Mouse monoclonal	ab10530	abcam	1:100
TFF3	Anti-Trefoil Factor 3 antibody	Mouse monoclonal	ab57752	abcam	1:100
TACC1	TACC1 (E41) pAb	Rabbit	BS2644	abcam	1:100

doi:10.1371/journal.pone.0082136.t001

be overexpressed at both gene and protein levels in human neoplasms, including intestinal, pancreatic and prostate cancers.

Transforming acidic coiled-coil 1 (TACC1) was originally identified as the sole coding sequence consistently found within the 8p11 human breast cancer amplicon [13]. It is expressed at high levels during embryogenesis and then down-regulated in differentiated tissues [13–15]. TACC1 is involved in several cancers including breast and ovarian cancers and leukemia. In a recent study [16], TACC1 was found to be up-regulated and act as an oncogene in breast and ovarian cancers. However, a recent serial analysis of gene expression (SAGE) suggested that TACC1 was down-regulated in ovarian tumors and ovarian cancer cell lines [17]. Therefore, whether TACC1 functions as an oncogene [16] or a tumor suppressor [18] is highly cancer type-dependent [13].

In the present study, we investigated the expression levels of NPM, TFF3 and TACC1 in GC patients, and also analyzed their potential correlations with clinical features and overall survival (OS) of GC patients.

Materials and Methods

Patients and Clinical Samples

Included in this study were 142 patients (93 male and 49 female) who received surgical resection of primary GC at the department of general surgery in our hospital between July 2007 and September 2009. The study protocol was approved by the Ethics Committee of the Affiliated Hospital of Qingdao University School of Medicine (Qingdao, China). Patients had signed an informed consent. The median age was 59 years (27 to 89 years). Tumor specimens were fixed in 10% formaldehyde solution and

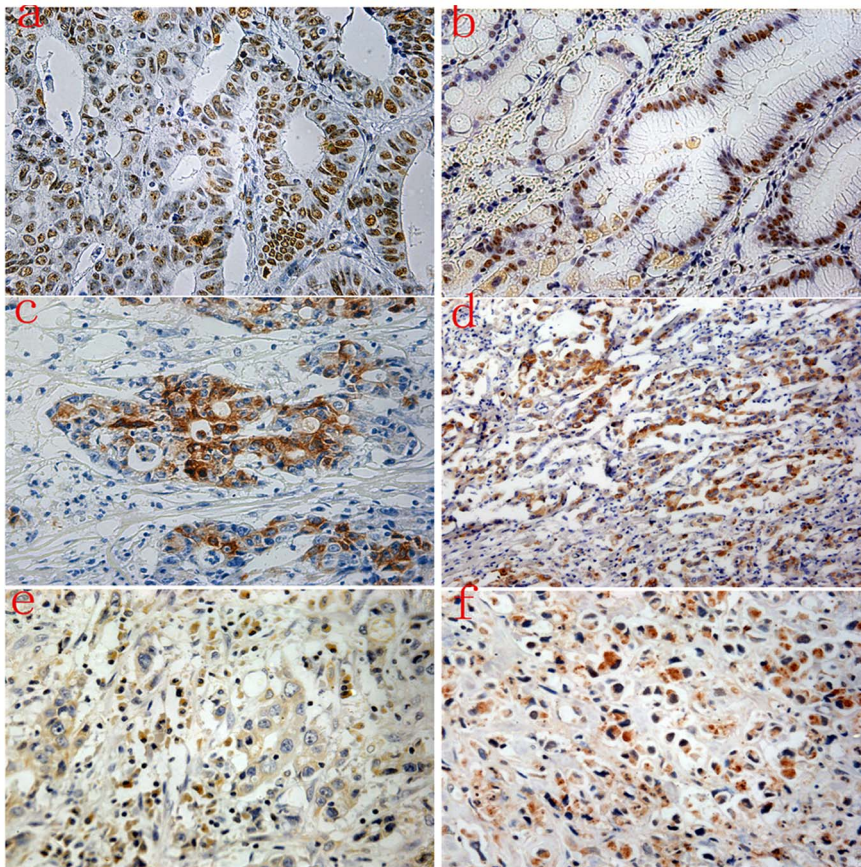


Figure 1. Immunohistochemical expression levels of NPM, TFF3 and TACC1 in gastric cancer. Strong staining of NPM was observed in the nucleolus, nucleus and cytoplasm of tumor epithelial cells (a, b). High expression of TFF3 (c and d) was predominantly observed in the cytoplasm of tumor epithelial cells. TACC1 was expressed in the cytoplasm of tumor epithelial cells (e and f). doi:10.1371/journal.pone.0082136.g001

embedded in paraffin. None of the patients had received chemotherapy or radiotherapy before surgery. The pathologic diagnoses and classifications were made according to the Japanese Classification of Gastric Carcinoma. Complete demographic and clinical data were collected retrospectively. “Early cancer” was defined as cancer invasion limited to the submucosa, and “advanced cancer” was defined as cancer invasion into the muscularis propria or serosa. The end date of the follow-up was July 2012, and the median follow-up period for OS was 47 months (range 3–59 months) with a 3-year postsurgical survival rate of 64.2%.

Immunohistochemistry

Array blocks were sliced into 4-µm sections, deparaffinized and hydrated in graded ethanol. Antigen retrieval was performed by immersing the slides in citrate buffer (Ph 6.0) and microwaving for

10 min. Deparaffinized and hydrated tissue sections were treated with 0.3% hydrogen peroxidase in methanol for 15 min, washed in PBS and incubated with the primary antibodies against NPM, TFF3 and TACC1 for overnight at 4°C (Table 1). Antibody staining was detected with the avidin-biotin-peroxidase complex (PV9005, mouse hypersensitivity, Beijing fir Jinqiao, China). Diaminobenzidine was used to visualize peroxidase deposition at the antigenic site, and these sections were counterstained with hematoxylin.

Immunohistochemical staining was assessed semi-quantitatively by measuring both the intensity of the staining (0, 1, 2, or 3) and the extent of staining (0, 0%; 1, 0–10%; 2, 10–50%; 3, 50–100%). The scores for the intensity and the extent of staining were multiplied to give a weighted score for each case (maximum possible, 9). For the statistical analysis, the weighted scores were

Table 2. Correlation between clinicopathological factors and NPM, TFF3 and TACC1 expressions.

Clinicopathological factors	NPM		P-value	TFF3		P-value	TACC1		P-value
	Positive	Negative		Positive	Negative		Positive	Negative	
	N = 67	N = 75		N = 63	N = 79		N = 70	N = 72	
Age									
≤60	34	35	P>0.05	27	42	P>0.05	31	38	P>0.05
>60	33	40		36	37		39	34	
Gender									
Male	48	45	P>0.05	38	55	P>0.05	36	57	P<0.05
Female	19	30		25	24		34	15	
Tumor diameter									
≤50 mm (small)	47	45	P>0.05	39	53	P>0.05	45	47	P>0.05
>51 mm (large)	20	30		24	26		25	25	
Tumor depth									
Early cancer (T**1)	12	8	P>0.05	10	10	P>0.05	13	7	P>0.05
Advanced cancer (T2–T4)	55	67		53	69		57	65	
Histologic type									
Well/moderately	8	19	P<0.05	6	21	P<0.05	7	20	P<0.05
Poor, others	59	56		57	58		63	52	
Peritoneal metastasis									
Negative	61	73	P>0.05	58	76	P>0.05	66	68	P>0.05
Positive	6	2		5	3		4	4	
Venous invasion									
Negative	65	69	P>0.05	60	74	P>0.05	63	71	P<0.05
Positive	2	6		3	5		7	1	
Lymph node metastasis									
Negative	26	38	P>0.05	22	42	P<0.05	29	35	P>0.05
Positive	41	37		41	37		41	37	
Hepatic metastasis									
Negative	60	74	P<0.05	59	75	P>0.05	64	70	P>0.05
Positive	7	1		4	4		6	2	
Recurrence									
Negative	56	71	P<0.05	55	72	P>0.05	61	66	P>0.05
Positive	11	4		8	7		9	6	

*P<0.05 Statistically significant;
 **T: tumor size.
 doi:10.1371/journal.pone.0082136.t002

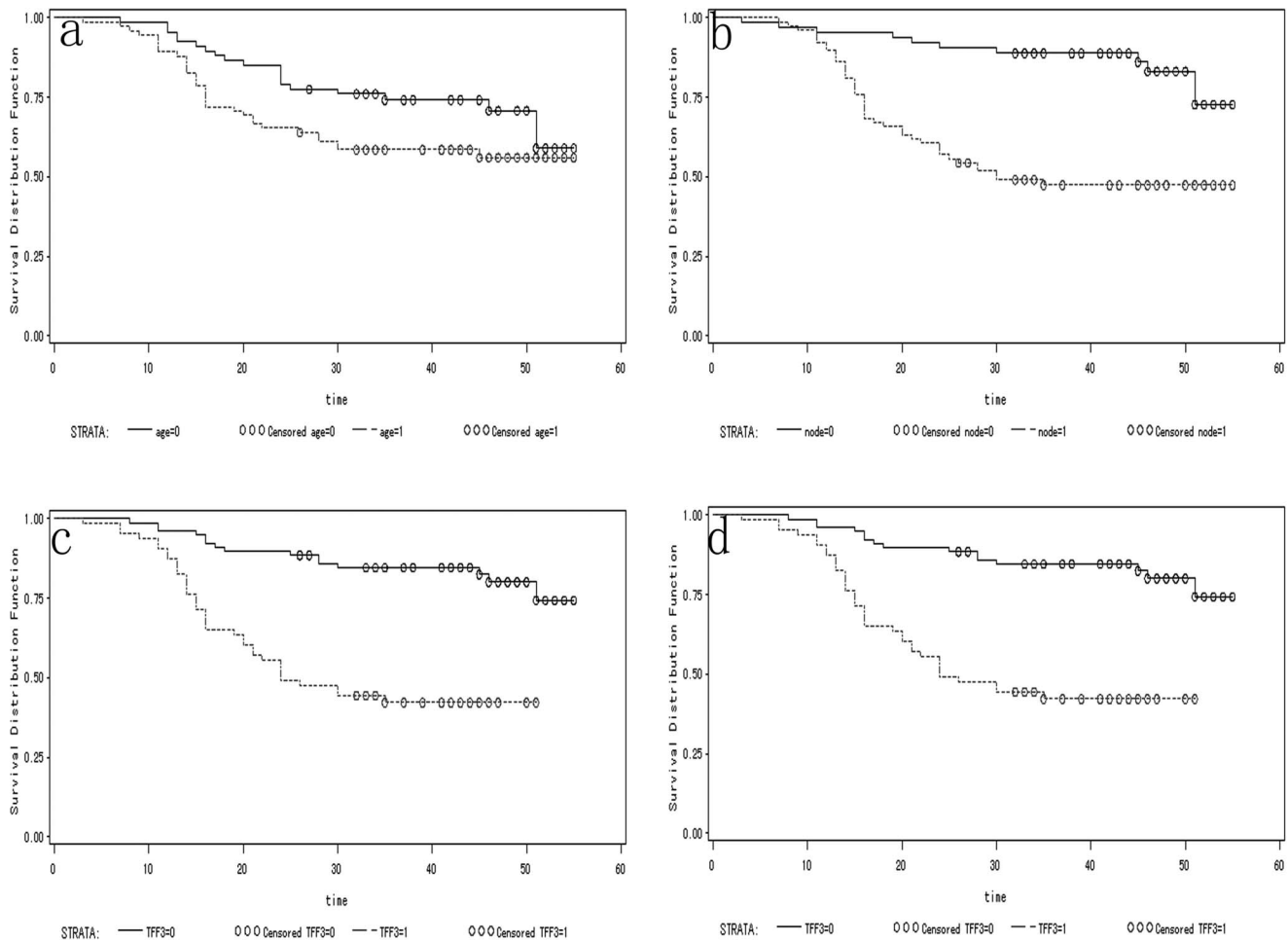


Figure 2. Kaplan-Meier overall survival curves of 142 GC patients according to age (a), lymph node metastasis (b), TFF3 expression (c), and TACC1 expression (d) ($P < 0.05$). Abbreviations: age = 0 means age ≤ 60 years; age = 1 means age > 60 years. node = 0 means no lymph node metastasis; node = 1 means lymph node metastasis. doi:10.1371/journal.pone.0082136.g002

grouped in two categories where scores of 0 to 3 were considered negative, and 4 to 9 positive.

Statistical Analysis

All statistical analyses were performed using the statistical package SAS version 9.2. The χ^2 test and Fisher's Exact test were used to examine correlations between the expression of the molecular markers and various clinicopathological parameters. Univariate analysis was performed by using the Kaplan-Meier method, and statistical significance between survival curves was assessed by the log rank test. OS was determined from the date of surgery to the time of cancer death. To assess the independent values of different variables on survival, multivariate analysis was carried out in the presence of other variables using the Cox proportional hazards model. Only variables of significant value from the univariate analysis were entered into the Cox regression analysis. $p < 0.05$ was considered statistically significant.

Results

NPM, TFF3 and TACC1 Expression Patterns in Tumor Cells

Expression of NPM, TFF3 and TACC1 was measured by semi-quantitative IHC analyses. NPM was localized in the nucleolus, nucleus and cytoplasm of tumor epithelial cells (positive 47% vs.

53% negative) (Figure. 1). TFF3 was expressed in the cytoplasm of tumor epithelial cells (positive 44% vs. 56% negative), and no staining was observed in the nucleus (Figure. 1). TACC1 was expressed in the cytoplasm of tumor epithelial cells (positive 49% vs. 51% negative) (Figure. 1), and no staining was observed in the nucleus.

Patient Clinicopathological Variables

The median age of the patients in this study was 59 years (27 to 89 years). The median follow-up overall survival was 47 months (range 3–59 months), and the 3-year postsurgical survival rate was 64.2%. The median tumor size was 35 mm (range 15–130 mm). With regard to tumor stage, 14% (20/142) of the patients were in early cancer and 86% (122/142) were in advanced cancer. Lymph node metastasis was observed in 55% (78/142) of the patients. Distant metastases, including hepatic metastasis, venous invasion and peritoneal metastasis, occurred in 15 patients.

Correlations between Clinicopathological Data and the Expressions of NPM, TFF3 and TACC1

NPM, TFF3 and TACC1 expressions were significantly higher in patients with poor differentiated histologic type GC than those in patients with well differentiated histologic type GC (NPM, 0.88

Table 3. Univariate analysis with respect to overall survival in 142 GC patients (univariate analysis; log-rank test).

Characteristics	Patients (n)	Patients (%)	p-value
Age (years)			P<0.05
≤60	69	49	
>60	73	51	
Gender			P>0.05
Male	93	65	
Female	49	35	
Histology			P>0.05
Well/moderately	27	19	
Poor, others	115	81	
Tumor diameter			P>0.05
≤50 mm (small)	92	65	
>51 mm (large)	50	35	
Stage			P>0.05
Early cancer (T**1)	20	14	
Advanced cancer (T2–T4)	122	86	
Peritoneal metastasis			P<0.05
Negative	134	94	
Positive	8	6	
Venous invasion			P>0.05
Negative	134	94	
Positive	8	6	
Lymph node metastasis			P<0.05
Negative	64	45	
Positive	78	55	
Hepatic metastasis			P<0.05
Negative	134	94	
Positive	8	6	
Recurrence			P<0.05
Negative	127	89	
Positive	15	11	
NPM			P>0.05
Negative	75	53	
Positive	67	47	
TFF3			P<0.001
Negative	79	56	
Positive	63	44	
TACC1			P<0.001
Negative	72	51	
Positive	70	49	
NPM/TFF3			P<0.05
Co-negative	47	33	
Single-positive	60	42	
Co-positive	35	25	
TFF3/TACC1			P<0.001
Co-negative	54	38	
Single-positive	43	30	
Co-positive	45	32	
NPM/TACC1			P<0.05

Table 3. Cont.

Characteristics	Patients (n)	Patients (%)	p-value
Co-negative	47	33	
Single-positive	54	38	
Co-positive	41	29	
NPM/TFF3/TACC1			P<0.001
Co-negative	39	27	
Single-positive	79	56	
Co-positive	24	17	

doi:10.1371/journal.pone.0082136.t003

vs. 0.12; TFF3, 0.90 vs. 0.10; TACC1, 0.90 vs. 0.10; P<0.05). Only NPM expression was significantly higher in patients with hepatic metastasis (0.88 vs. 0.12; P<0.05) or recurrence (0.73 vs. 0.27; P<0.05). TFF3 was significantly higher in patients with positive lymph node metastasis than that in patients with negative lymph node metastasis (TFF3, 0.61 vs. 0.39; p<0.05). TACC1 expression correlated significantly with venous invasion (0.88 vs. 0.12; P<0.05) and female patients (0.69 vs. 0.31; P<0.05). Clinical and histopathological variables are shown in Table 2.

Univariate Analysis

Univariate analyses showed that age, lymph node metastasis, TFF3 over-expression and TACC1 over-expression were significantly correlated with a short survival time (Table 3, Figure 2). For statistical analysis, the designated “high-risk group” had an altered expression of 2 or 3 proteins. the designated “low-risk group” had an altered expression of 0 or 1 proteins. The prognosis was poorer in patients with positive co-expression of NPM/TFF3, TFF3/TACC1, NPM/TACC1 and NPM/TFF3/TACC1 than that in patients with positive expression of NPM, TFF3 or TACC1 alone, or with negative co-expression of these markers (Table 3).

Multivariate Analysis

Multivariate analysis showed that lymph node metastasis and the expression of TFF3 and TACC1 in tumor epithelial cells were independent prognostic factors for overall survival (Table 4), and that the hazard ratio (HR) of tumor-related death increased by 3.409 fold in FF3 group (P<0.001; 95% CI 2.387–8.143). The 3.311-fold increase in HR of tumor-related death in lymph node metastasis group was obviouslyly significant (P<0.001; 95% CI 2.148–8.651) (Table 4). The 2.278-fold increase in HR of tumor-

Table 4. Multivariate analysis of overall survival in 142 GC patients (multivariate analysis; log-rank test).

Factors	Hazard ratio	95% confidence interval (CI)	p-value
Lymph node metastasis	4.311	2.148–8.651	<0.001
TFF3	4.409	2.387–8.143	<0.001
TACC1	3.278	1.803–5.959	<0.001

TFF3 = 0 means TFF3-negative expression; TFF3 = 1 means TFF3-positive expression. TACC1 = 0 means TACC1-negative expression; TACC1 = 1 means TACC1-positive expression. P-values were calculated by the log-rank test. doi:10.1371/journal.pone.0082136.t004

related death in TACC1 group was also obviously significant ($P < 0.001$; 95% CI 1.803–5.959).

Discussion

Accordingly, examination of expression of specific genes in gastric carcinoma cells could help you understand the histopathological features of GC. Consequently, it is essential to study the different molecular markers to be able to understand the mechanism of tumorigenesis and metastases. Therefore, we sought out to test a panel of three molecular markers associated with tumorigenesis.

Nucleophosmin/B23 expression is a nucleolar phosphoprotein constantly shuttling between the nucleolus and cytoplasm [4], and at the RNA and protein levels may contribute to the onset of cancer [19,20], NPM was previously suggested as a prognostic factor for poor survival and is related to tumor progression and resistance [21,22]. However, the results obtained in the present study differed in several important respects from these earlier studies. We found a worse outcome in patients with NPM over-expression, but it is not an independent prognosis marker, possibly because of the biological variation of protein expression in different areas of tumor tissue. In our study, NPM over-expression was observed in 73% patients with recurrence, indicating that NPM over-expression was significantly associated with recurrence. The study of Tsui et al [23] also showed that high NPM/B23 level was correlated with recurrence of bladder cancer. In addition, it is intriguing to speculate that NPM might be correlated with promote hepatic metastasis of this cancer. The result of the present study indicates that NPM over-expression may prove to be a predictor for bad prognosis of GC, although the exact underlying mechanism remains unclear.

Previous studies [24,25] showed that TFF3 was frequently over-expressed in breast cancer and other primary tumors. Our results showed that 44% of gastric carcinomas expressed TFF3, and more importantly that TFF3 over-expression in GC was an independent negative prognostic indicator for OS. The risk of death was significantly increased in patients with TFF3 over-expression. In addition, TFF3 over-expression was the second highest risk next to lymph node metastasis for postoperative survival. Significant correlations between TFF3 over-expression and poor prognosis have been previously reported in cholangiocarcinoma [26] and endometrioid endometrial carcinoma [27], which is consistent with our result. Our data also suggest that TFF3 over-expression was correlated with more aggressive clinicopathological parameters. For example, TFF3 over-expression was detected in approximately 50% of the patients with positive lymph node metastasis *vs.* one-third in patients with negative lymph node

metastasis, indicating that TFF3 over-expression plays an important role in lymph node metastasis in GC patients. Further studies on molecular mechanism are needed to define more precisely the role of trefoil peptide expression in tumor progression and metastasis.

Previous studies [28,29] have suggested the possible effect of TACC1 on cell proliferation and its carcinogenetic properties. However, to the best of our knowledge, there are no other studies reporting the correlation between TACC1 over-expression and clinical significance in GC patients. One of the significant findings of this study is the great gender-related impact on TACC1 over-expression, which shows that 69% of the female GC patients exhibited positive TACC1 expression. In addition, the number of female patients with TACC1 over-expression was twice that in male patients with negative TACC1 expression. However, TACC1 over-expression had no significant impact on the survival with respect to the gender as opposed to the significant impact on the survival of different age groups, suggesting that there may be other mechanisms affecting the survival of GC patients. The result of our multivariate analysis showed that TACC1 over-expression was an independent prognostic factor of GC, which is consistent with the earlier finding on the prognostic significance of TACC1 observed in ovarian tumors [30]. In addition, our data provide the evidence that TACC1 over-expression is associated with venous invasion, implying its possible role in tumor metastasis.

Approximately half of cancer specimens were found with co-expression of these two markers. Univariate analysis shows that the high-risk group was significantly associated with shorter patient overall survival, and that high-risk group exhibits a poorer prognosis than low-risk group. Whether the combined expression of NPM, TFF3 and TACC1 contributes a growth advantage of tumor must be further determined by *in vitro* and clinical studies.

In conclusion, TFF3 and TACC1 over-expression in tumor epithelial cells of surgically resected gastric adenocarcinoma could independently predict a shorter survival. NPM over-expression is significantly correlated with the clinical pathology features of GC. These observations indicate that over-expression is crucial for the pathogenesis and development of GC. Additional investigations are needed to provide a better foundation for the development of more effective therapeutic strategies for GC and other human malignancies.

Author Contributions

Conceived and designed the experiments: WQ LY WZ. Performed the experiments: AD WZ. Analyzed the data: WZ XS FZ. Contributed reagents/materials/analysis tools: RY SL. Wrote the paper: AD WZ LY.

References

- de Martel C, Forman D, Plummer M (2013) Gastric cancer: epidemiology and risk factors. *Gastroenterol Clin North Am* 42: 219–240.
- Kong H, Kwon OK, Yu W (2012) Changes of quality of life after gastric cancer surgery. *J Gastric Cancer* 12: 194–200.
- Hosogi H, Kanaya S (2012) Intracorporeal anastomosis in laparoscopic gastric cancer surgery. *J Gastric Cancer* 12: 133–139.
- Takemura M, Sato K, Nishio M, Akiyama T, Umekawa H, et al. (1999) Nucleolar protein B23.1 binds to retinoblastoma protein and synergistically stimulates DNA polymerase alpha activity. *J Biochem* 125: 904–909.
- Gjerset RA (2006) DNA damage, p14ARF, nucleophosmin (NPM/B23), and cancer. *J Mol Histol* 37: 239–251.
- Colombo E, Alcalay M, Pelicci PG (2011) Nucleophosmin and its complex network: a possible therapeutic target in hematological diseases. *Oncogene* 30: 2595–2609.
- Leotoing L, Meunier L, Manin M, Mauduit C, Decaussin M, et al. (2008) Influence of nucleophosmin/B23 on DNA binding and transcriptional activity of the androgen receptor in prostate cancer cell. *Oncogene* 27: 2858–2867.
- Hiscox JA (2002) The nucleolus—a gateway to viral infection? *Arch Virol* 147: 1077–1089.
- Grisendi S, Mecucci C, Falini B, Pandolfi PP (2006) Nucleophosmin and cancer. *Nat Rev Cancer* 6: 493–505.
- Hoffmann W (2005) Trefoil factors TFF (trefoil factor family) peptide-triggered signals promoting mucosal restitution. *Cell Mol Life Sci* 62: 2932–2938.
- Hoffmann W, Jagla W, Wiede A (2001) Molecular medicine of TFF-peptides: from gut to brain. *Histol Histopathol* 16: 319–334.
- Liu D, el-Hariry I, Karayiannakis AJ, Wilding J, Chinery R, et al. (1997) Phosphorylation of beta-catenin and epidermal growth factor receptor by intestinal trefoil factor. *Lab Invest* 77: 557–563.
- Still IH, Hamilton M, Vince P, Wolfman A, Cowell JK (1999) Cloning of TACC1, an embryonically expressed, potentially transforming coiled coil containing gene, from the 8p11 breast cancer amplicon. *Oncogene* 18: 4032–4038.
- Sadek CM, Jalaguier S, Feeney EP, Aitola M, Damdimopoulos AE, et al. (2000) Isolation and characterization of AINT: a novel ARNT interacting protein expressed during murine embryonic development. *Mech Dev* 97: 13–26.

15. Still IH, Vince P, Cowell JK (1999) The third member of the transforming acidic coiled coil-containing gene family, TACC3, maps in 4p16, close to translocation breakpoints in multiple myeloma, and is upregulated in various cancer cell lines. *Genomics* 58: 165–170.
16. Cully M, Shiu J, Pickorz RP, Muller WJ, Done SJ, et al. (2005) Transforming acidic coiled coil 1 promotes transformation and mammary tumorigenesis. *Cancer Res* 65: 10363–10370.
17. Colombo E, Marine JC, Danovi D, Falini B, Pelicci PG (2002) Nucleophosmin regulates the stability and transcriptional activity of p53. *Nat Cell Biol* 4: 529–533.
18. Chen HM, Schmeichel KL, Mian IS, Lelievre S, Petersen OW, et al. (2000) AZU-1: a candidate breast tumor suppressor and biomarker for tumor progression. *Mol Biol Cell* 11: 1357–1367.
19. Chao A, Lin CY, Tsai CL, Hsueh S, Lin YY, et al. (2013) Estrogen stimulates the proliferation of human endometrial cancer cells by stabilizing nucleophosmin/B23 (NPM/B23). *J Mol Med (Berl)* 91: 249–259.
20. Jian Y, Gao Z, Sun J, Shen Q, Feng F, et al. (2009) RNA aptamers interfering with nucleophosmin oligomerization induce apoptosis of cancer cells. *Oncogene* 28: 4201–4211.
21. Bhat UG, Jagadeeswaran R, Halasi M, Gartel AL (2011) Nucleophosmin interacts with FOXM1 and modulates the level and localization of FOXM1 in human cancer cells. *J Biol Chem* 286: 41425–41433.
22. Park KS, Han BG, Lee KH, Kim DS, Kim JM, et al. (2009) Depletion of nucleophosmin via transglutaminase 2 cross-linking increases drug resistance in cancer cells. *Cancer Lett* 274: 201–207.
23. Tsui KH, Juang HH, Lee TH, Chang PL, Chen CL, et al. (2008) Association of nucleophosmin/B23 with bladder cancer recurrence based on immunohistochemical assessment in clinical samples. *Acta Pharmacol Sin* 29: 364–370.
24. Ahmed AR, Griffiths AB, Tilby MT, Westley BR, May FE (2012) TFF3 is a normal breast epithelial protein and is associated with differentiated phenotype in early breast cancer but predisposes to invasion and metastasis in advanced disease. *Am J Pathol* 180: 904–916.
25. Casado E, Garcia VM, Sanchez JJ, Gomez Del Pulgar MT, Feliu J, et al. (2012) Upregulation of trefoil factor 3 (TFF3) after rectal cancer chemoradiotherapy is an adverse prognostic factor and a potential therapeutic target. *Int J Radiat Oncol Biol Phys* 84: 1151–1158.
26. Muenphon K, Limpiboon T, Jearanaikoon P, Pairojkul C, Sripan B, et al. (2006) Amplification of chromosome 21q22.3 harboring trefoil factor family genes in liver fluke related cholangiocarcinoma is associated with poor prognosis. *World J Gastroenterol* 12: 4143–4148.
27. Bignotti E, Ravaggi A, Tassi RA, Calza S, Rossi E, et al. (2008) Trefoil factor 3: a novel serum marker identified by gene expression profiling in high-grade endometrial carcinomas. *Br J Cancer* 99: 768–773.
28. Conte N, Delaval B, Ginestier C, Ferrand A, Isnardon D, et al. (2003) TACC1-chTOG-Aurora A protein complex in breast cancer. *Oncogene* 22: 8102–8116.
29. Line A, Slucka Z, Stengrevics A, Li G, Rees RC (2002) Altered splicing pattern of TACC1 mRNA in gastric cancer. *Cancer Genet Cytogenet* 139: 78–83.
30. Lauffart B, Vaughan MM, Eddy R, Chervinsky D, DiCioccio RA, et al. (2005) Aberrations of TACC1 and TACC3 are associated with ovarian cancer. *BMC Womens Health* 5: 8.