

A Collection of Primary Tissue Cultures of Tumors from Vacuum Packed and Cooled Surgical Specimens: A Feasibility Study

Laura Annaratone^{1,9}, Caterina Marchiò^{1,2,9}, Rosalia Russo¹, Luigi Ciardo¹, Sandra Milena Rondon-Lagos¹, Margherita Goia¹, Maria Stella Scalzo^{1,2}, Stefania Bolla^{1,2}, Isabella Castellano^{1,2}, Ludovica Verdun di Cantogno², Gianni Bussolati^{1,3}, Anna Sapino^{1,2*}

1 Department of Medical Sciences, University of Turin, Turin, Italy, **2** Department of Laboratory Medicine, Azienda Ospedaliera Città della Salute e della Scienza di Torino, Turin, Italy, **3** Institut Victor Babes, Bucharest, Romania

Abstract

Primary cultures represent an invaluable tool to set up functional experimental conditions; however, creation of tissue cultures from solid tumors is troublesome and often unproductive. Several features can affect the success rate of primary cultures, including technical issues from pre-analytical procedures employed in surgical theaters and pathology laboratories. We have recently introduced a new method of collection, transfer, and preservation of surgical specimens that requires immediate vacuum sealing of excised specimens at surgical theaters, followed by time-controlled transferring at 4°C to the pathology laboratory. Here we investigate the feasibility and performance of short-term primary cell cultures derived from vacuum packed and cooled (VPAC) preserved tissues. Tissue fragments were sampled from 52 surgical specimens of tumors larger than 2 cm for which surgical and VPAC times (the latter corresponding to cold ischemia time) were recorded. Cell viability was determined by trypan blue dye-exclusion assay and hematoxylin and eosin and immunohistochemical stainings were performed to appreciate morphological and immunophenotypical features of cultured cells. Cell viability showed a range of 84–100% in 44 out of 52 (85%) VPAC preserved tissues. Length of both surgical and VPAC times affected cell viability: the critical surgical time was set around 1 hour and 30 minutes, while cells preserved a good viability when kept for about 24 hours of vacuum at 4°C. Cells were maintained in culture for at least three passages. Immunocytochemistry confirmed the phenotype of distinct populations, that is, expression of cytokeratins in epithelioid cells and of vimentin in spindle cells. Our results suggest that VPAC preserved tissues may represent a reliable source for creation of primary cell cultures and that a careful monitoring of surgical and cold ischemia times fosters a good performance of primary tissue cultures.

Citation: Annaratone L, Marchiò C, Russo R, Ciardo L, Rondon-Lagos SM, et al. (2013) A Collection of Primary Tissue Cultures of Tumors from Vacuum Packed and Cooled Surgical Specimens: A Feasibility Study. PLoS ONE 8(9): e75193. doi:10.1371/journal.pone.0075193

Editor: Jorge Sans Burns, University Hospital of Modena and Reggio Emilia, Italy

Received: March 27, 2013; **Accepted:** August 13, 2013; **Published:** September 30, 2013

Copyright: © 2013 Annaratone et al. This is an open-access article distributed under the terms of the Creative Commons Attribution License, which permits unrestricted use, distribution, and reproduction in any medium, provided the original author and source are credited.

Funding: This work was supported by Ricerca Sanitaria Finalizzata RF-2010-2310674 and AIRC Grants (IG 10787 to AS and MFAG 13310 to CM). GB is funded in part by Persother (SMIS-CSRN:549/12.024). The funders had no role in study design, data collection and analysis, decision to publish, or preparation of the manuscript.

Competing Interests: The authors have declared that no competing interests exist.

* E-mail: anna.sapino@unito.it

9 These authors contributed equally to this work.

Introduction

Primary cultures represent an invaluable tool to set up functional experimental conditions that are instrumental to demonstrate biological mechanisms directly on human-derived tumor cells, however, creation of tissue cultures from solid tumors is troublesome and often unproductive particularly when dealing with primary cultures of carcinomas. Major biological issues are related to a relatively slow doubling time of epithelial cancer cells and to a rapid overgrowth with fibroblasts [1], depending also on the type of source lesions. In addition, technical aspects may affect the success rate of primary cultures in general. Such technical issues may stem from pre-analytical procedures routinely employed in surgical theaters and pathology laboratories. Indeed, two simple rules are mandatory for obtaining proper samples for cell cultures: (i) to acquire fresh specimens as soon as possible after

completing the surgical procedure; (ii) to avoid both bacterial and fungal contamination of the specimens. The first rule matches with the need to reduce the ischemia process following the surgical procedure that stops with proper specimen fixation, since it allows activation of tissue enzymes, autolysis and degradation of proteins and nucleic acids [2,3]. However, logistics management of specimens from the surgical theater to the pathology lab has to be considered with the priority that involves material handling, packaging and transportation. Depending on the hospital structure the transport of surgical specimens from the surgical theater to the pathology lab may prolong the ischemia time. In addition, transfer may be performed using the most variable types of boxes, transport media and at different temperatures and the interval between surgical intervention and sampling at the pathology laboratory is not monitored. A good model for preserving sterility and cell viability could be that proposed for preserving organ for

transplantation, in which the first goal is reached by packing the organ in several layers of sterile containers and the second by cooling at 4°C the organ by surrounding it with an icy slush mixture [4]. In our University hospital we have recently introduced a new method of collection, transfer and preservation of surgical specimens [5,6,7,8]. This method requires immediate vacuum sealing of excised specimens at surgical theaters, followed by time-controlled transferring at 4°C to the pathology laboratory [6,7]. Such a procedure allows for having fresh (i.e. not fixed) tissues and it has been demonstrated not to affect morphology and to best preserve nucleic acids (DNA and RNA) and proteins [6,7,9].

In this study we tested the feasibility of setting up primary cell cultures derived from vacuum packed and cooled (VPAC) preserved tissues and to evaluate their performance and success rates.

Materials and Methods

Reagents

Tissue samples for cell cultures were collected in RPMI 1640 serum free medium, supplemented with 1% penicillin-streptomycin-fungizone.

The basal media used for cell culture was a mixture of DMEM (Dulbecco's Modified Eagle Medium) and F12 in 1:1 proportion. For preparation of complete media, 10% fetal bovine serum (FBS), 1% L-glutamine and 1% penicillin-streptomycin-fungizone were added to the basal media mixture. The complete media was supplemented with 10 ng/mL human epidermal growth factor (EGF), 5 µg/mL insulin and 400 ng/mL hydrocortisone. For breast cancer samples, the complete media contained also 5 ng/mL 17-beta-estradiol and 500 ng/mL progesterone.

For enzymatic cell dissociation Collagenase Type IV was used while trypsin-EDTA was used for passaging. All reagents were from Sigma-Aldrich, St Louis, MO, USA.

All materials used in this experiment were sterile to prevent contamination.

Vacuum Sample Collection

The study was approved by the ethic institutional review board for "Biobanking and use of human tissue for experimental studies" of the Pathology Services of the Azienda Ospedaliera Città della Salute e della Scienza di Torino. Written informed consent was obtained from all patients for their tissue to be used in research. Following excision in the surgical theater, surgical specimens were immediately placed into beta-ray sterilized plastic bags and vacuum sealed using the TissueSAFE machine (Mod. VAC 10, by Milestone, Bergamo, Italy; see www.milestonemedsl.com), according to a procedure originally reported by our group [7] and currently implemented as a standard technique in our hospital [5,8]. The VPAC specimens were kept and transferred to the pathology lab at 4°C in a chilled plastic box. Once in the lab, tissues were kept in a refrigerator at 4°C until processing. The surgical and VPAC times of the sample and the histotype, the percentage of stroma and epithelial cells of sample received from surgical theaters were recorded in a dedicated database.

As a separate analysis, two large specimens of reduction mammoplasty were divided in three parts (each of approximately 10×5×5 cm) in order to evaluate the decrease of temperature by using a digital thermometer with stainless steel sensor probe at different conditions of storage (i.e. vacuum sealed at room temperature, vacuum sealed at 4°C, not vacuum sealed at 4°C).

Cell Culture Procedure

The study was conducted on surgical specimens of tumors larger than 2 cm, leading to a cohort of 52 surgical samples, including 13 colorectal carcinomas, 6 lung carcinomas, 27 breast carcinomas, 2 adrenocortical adenomas, 3 gastric carcinomas and 1 thyroid carcinoma (see Table 1 for details). Samples for cell cultures were collected from "left over tissues" (i.e. tissue residuals not used for diagnostic and therapeutic purposes) by using sterile scalpels. Samples of 1×1 cm around 0.5 cm in thickness were collected in sterile tubes containing 10 mL of RPMI serum free medium, supplemented with 1% penicillin-streptomycin-fungizone. Tissue samples were washed 3 times in 20 mL of the same medium, then finely minced by surgical blades into approximately 1×1 mm fragments and divided in two aliquots. One aliquot was processed for cryopreservation, while the other tissue fragments were incubated at 37°C with collagenase type IV (1 mg/mL; 1:1 RPMI, final volume 10 mL), for 3–5 hours until complete disaggregation of fragments was obtained. Digested samples were shaken vigorously by hand to disaggregate possible residual large clumps. Collagenase activity was blocked by addition of 10 mL of RPMI with 10% FBS. After centrifugation at 800 rcf for 6 minutes, the cell pellets were re-suspended in complete culture medium. The final cell suspension was seeded in Petri dishes as passage 0 and kept in a humidified incubator with 5% CO₂ at 37°C. Culture medium was changed first at the time of cell attachment and, subsequently, three times a week. Cell growth was monitored daily in flasks with an EVOS inverted microscope (Advanced Microscopy Group, Bothell, WA, USA) during the first week. The morphology of the cell population (spindle or mixed spindle-epithelioid) was recorded.

Whenever the cell pellet was adequate, cells were seeded in another Petri dish containing sterilized coverslips (22×22 mm) to carry out Hematoxylin and Eosin (H&E) staining and immunocytochemical (ICC) reactions. Each time cells grown at confluence were split was considered a new passage.

Viability Assay and Cryopreservation of Cells

Viability of cells was determined by trypan blue dye (0.4% in PBS)-exclusion assay. Aliquots of cell suspension were incubated with trypan blue solution (1:1) for 5 min. Finally cells were transferred to the Burker chamber and counted by light microscope. Dead cells were defined as those stained with the dye. The percentage of living cells was calculated by the relationship between the number of viable cells and the total number of cells counted. Aliquots of cells were cryopreserved into sterile cryo-tubes in 1.5 mL freezing medium (FBS containing 10% DMSO). Tubes were kept at –80°C (for a maximum of 6 weeks) or, following overnight cooling, transferred into liquid nitrogen (for longer storage periods).

H&E Staining and ICC Reactions

To evaluate the proportion of stroma and tumor cells in the sample collected for primary cultures we examined the H&E histological slide obtained from sampling of a parallel tumor area. To evaluate morphology of cultures, cells were grown on coverslips (sealed on a standard slide) and washed in phosphate-buffered saline (PBS 1X) for 5 minutes, fixed in 4% neutral-buffered formalin for 10 minutes and dehydrated through a series of alcohols up to absolute alcohol and stained with H&E staining.

If the culture showed a mixed population we tried to characterize the cells using specific organ related markers. ICC was performed using an automated slide processing platform (Ventana BenchMark XT AutoStainer, Ventana Medical Systems, Tucson, AZ, USA). The following primary antibodies were used:

Table 1. Details of the 52 source lesions for cell cultures included in the study, correspondent surgical, and VPAC times of the specimens and percentage of viable cells in the primary cultures.

#	Organ	Surgical Time [hours (h), minutes (')]]	VPAC Time [hours (h), minutes (')]]	Tumor histology		Cell culture		
				Histological Type	% Stroma	% Tumor Cells	% Cell Viability	Cell Population
1	Colon	1h45'	3h45'	ADC	30	70	0.0%	/
2	Stomach	2h15'	4h10'	ADC	20	80	0.0%	/
3	Lung	1h20'	4h15'	ADC	40	60	95.3%	Spindle
4	Lung	1h20'	4h30'	ADC	40	60	93.9%	Mixed
5	Stomach	1h30'	4h45'	ADC	35	65	97.0%	Spindle
6	Colon	1h10'	5h00'	ADC	15	85	100.0%	Mixed
7	Colon	0h40'	5h25'	ADC	5	95	96.8%	Mixed
8	Colon	1h15'	5h25'	ADC	30	70	92.2%	Mixed
9	Adrenal	1h20'	5h25'	ADENOMA	10	90	86.1%	Spindle
10	Breast	1h35'	20h40'	ILC	40	60	0.0%	/
11	Lung	2h15'	21h20'	SFT	8	92	96.4%	Mixed
12	Breast	0h45'	21h40'	IC-NST	25	75	93.6%	Mixed
13	Breast	1h40'	21h43'	IC-NST	10	90	94.8%	Mixed
14	Breast	0h20'	22h20'	ILC	8	92	98.8%	Mixed
15	Breast	0h55'	22h20'	IC-NST	15	85	95.0%	Mixed
16	Colon	1h10'	22h30'	ADC	30	70	92.2%	Spindle
17	Lung	0h10'	22h35'	ADC	2	98	97.7%	Mixed
18	Lung	1h20'	22h35'	SC	50	50	96.5%	Mixed
19	Colon	1h20'	22h45'	ADC	40	60	93.5%	Spindle
20	Breast	1h10'	23h10'	IC-NST	20	80	96.9%	Mixed
21	Breast	0h11'	23h17'	IC-NST	50	50	96.6%	Mixed
22	Breast	1h50'	23h20'	IC-NST	60	40	96.3%	Mixed
23	Breast	0h25'	23h25'	ILC	50	50	96.1%	Mixed
24	Breast	1h10'	23h46'	IC-NST	40	60	98.5%	Mixed
25	Breast	0h05'	23h50'	IC-NST	30	70	95.9%	Mixed
26	Colon	0h45'	23h50'	ADC	15	85	86.6%	Mixed
27	Breast	1h10'	23h50'	MC	10	90	94.0%	Mixed
28	Breast	1h20'	24h00'	IC-NST	55	45	84.0%	Spindle
29	Breast	0h50'	24h10'	IC-NST	30	70	97.9%	Mixed
30	Breast	0h25'	24h16'	IC-NST	10	90	99.3%	Mixed
31	Breast	0h15'	24h30'	IC-NST	20	80	99.2%	Mixed
32	Breast	1h10'	24h35'	IC-NST	65	35	0.0%	/
33	Breast	0h40'	25h00'	PDC	30	70	96.5%	Mixed
34	Lung	1h40'	25h00'	ADC	40	60	97.3%	Spindle
35	Breast	0h50'	25h05'	ILC	40	60	96.7%	Mixed
36	Breast	0h35'	25h20'	IC-NST	30	70	96.0%	Mixed
37	Colon	1h45'	26h10'	ADC	40	60	98.6%	Spindle
38	Thyroid	2h20'	26h40'	HCC	20	80	96.3%	Mixed
39	Colon	1h45'	27h40'	ADC	25	75	90.7%	Spindle
40	Breast	0h27'	28h20'	ILC	30	70	0.0%	/
41	Colon	0h50'	29h00'	ADC	20	80	86.5%	Mixed
42	Colon	1h25'	39h20'	ADC	20	80	0.0%	/
43	Breast	0h50'	42h15'	IC-NST	40	60	89.0%	Mixed
44	Breast	0h20'	43h05'	ILC+IPC	25	75	97.3%	Mixed
45	Breast	1h00'	45h05'	IC-NST	80	20	98.9%	Spindle

Table 1. Cont.

#	Organ	Surgical Time [hours (h), minutes (')]]	VPAC Time [hours (h), minutes (')]]	Tumor histology		Cell culture		
				Histological Type	% Stroma	% Tumor Cells	% Cell Viability	Cell Population
46	Breast	3h00'	45h50'	IC-NST	40	60	98,7%	Mixed
47	Breast	0h40'	46h47'	IC-NST	20	80	96,3%	Mixed
48	Colon	1h10'	70h15'	ADC	30	70	97,5%	Spindle
49	Breast	2h25'	72h25'	ILC	20	80	95,5%	Mixed
50	Colon	1h45'	73h45'	ADC	25	75	96,7%	Spindle
51	Adrenal	3h45'	74h05'	PHEO	5	95	0,0%	/
52	Stomach	1h30'	75h15'	ADC	52	48	0,0%	/

Legend: ADC: adenocarcinoma; HCC: Hurtle cell carcinoma; IC-NST: invasive carcinoma of no special type; ILC: infiltrating lobular carcinoma; IPC: intracystic papillary carcinoma; MC: medullary carcinoma; PDC: poorly differentiated carcinoma; PHEO: pheochromocytoma; SFT: solitary fibrous tumor; SC: squamous carcinoma.
doi:10.1371/journal.pone.0075193.t001

mouse anti-pancytokeratin (clone AE1-AE3-PCK26, Ventana; pre-diluted, antigen retrieval: Protease 1 (Ventana) for 4 minutes), anti-vimentin (clone R9, Dako, Glostrup, Denmark; dilution 1:50, antigen retrieval: pre-diluted pretreatment solution Cell Conditioning 1 (CC1, Ventana) for 20 minutes), anticytokeratin-19 (clone NCL-CK19, Leica Novocastra; dilution 1:50, antigen retrieval: CC1 36 for minutes), anti-cytokeratin-14 (clone NCL-LL002, Leica Novocastra; dilution 1:100, antigen retrieval: CC1 for 36 minutes), anti-cytokeratin-7 (clone OVTL, Dako, Glostrup, Denmark; dilution 1:100, antigen retrieval: CC1 for 36 minutes) and anti-TTF1 (clone 8G7G3/1, Roche Diagnostics; pre-diluted, antigen retrieval: CC1 for 36 minutes).

Statistical Analysis

Results were analyzed by contingency tables using the Fisher's exact test. Paired Student's T-test was used for continuous variables. A p value <0.05 was considered statistically significant.

Results

Effect of Vacuum and Cooling on Specimen Temperature

VPAC produced a more rapid decrease of temperature as compared to non-VPAC procedures, while vacuum sealing at room temperature did not significantly affect temperature decrease (Figure 1). Statistically significant differences between groups were observed at 1 hour and 2 hours ($p=0.005$ and $p=0.013$, respectively). The results were consistent for the whole set of samples obtained from two different reduction mammoplasty specimens.

Cell Viability and Influence of Surgical and VPAC Time

Table 1 lists the details of 52 collected cases (site of lesion origin, histotype and percentage of stromal and tumor components) with correspondent surgical time (i.e. the time between the beginning of surgery - incision of the skin - and the surgical removal of tissues) and VPAC time (i.e. time between surgical removal of tissues and

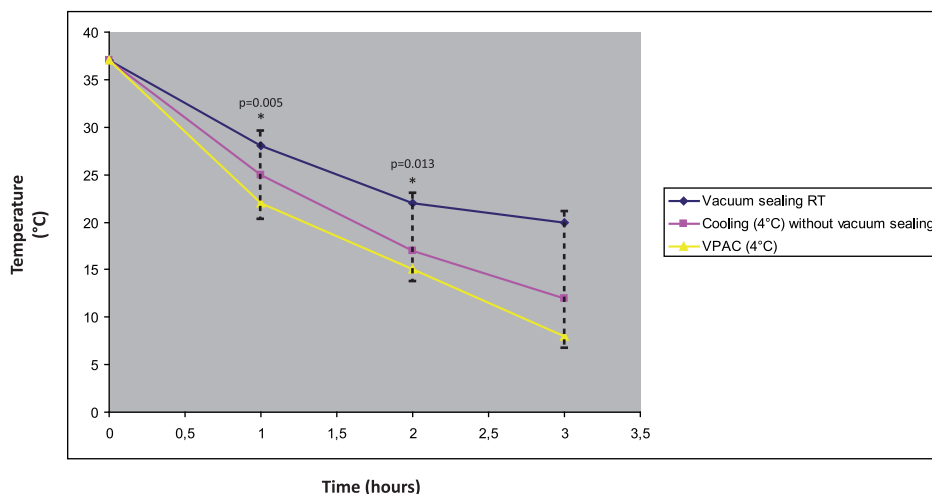
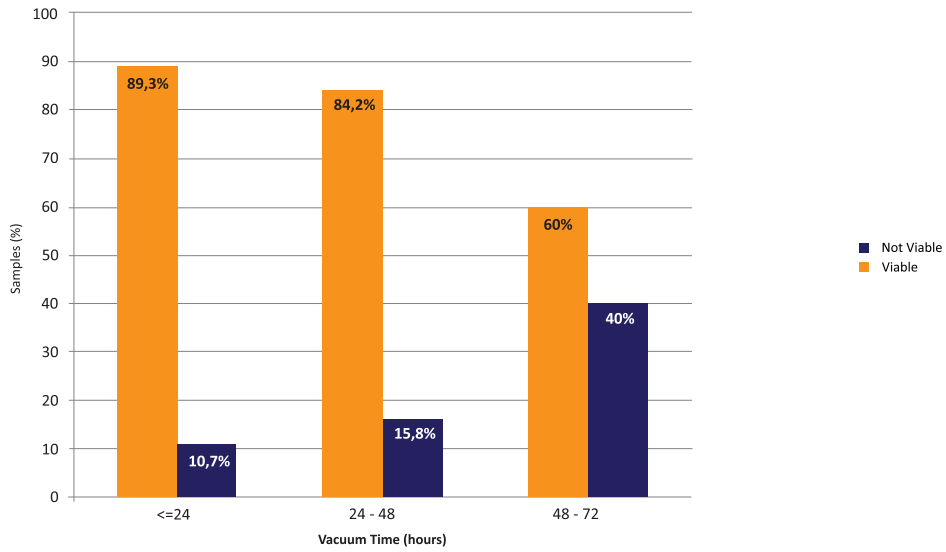
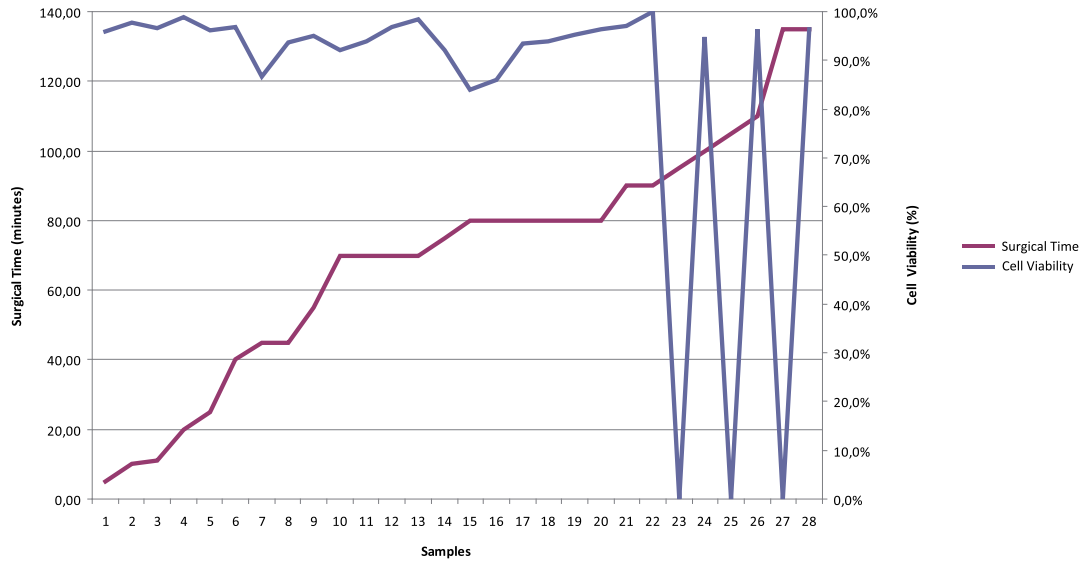


Figure 1. Effect of vacuum and cooling on specimen temperature. Results of temperature monitoring over time of a specimen of reduction mammoplasty. The specimen was subdivided in three parts that were stored under three distinct conditions, i.e. vacuum sealed at room temperature (RT), vacuum sealed at 4°C, cooled at 4°C without vacuum sealing. VPAC produced a more rapid decrease of temperature than non-VPAC procedures, while vacuum sealing at room temperature did not significantly affect temperature decrease. The * indicates statistically significant differences ($p=0.005$ at 1 hour, $p=0.013$ at 2 hours).
doi:10.1371/journal.pone.0075193.g001

A



B



C

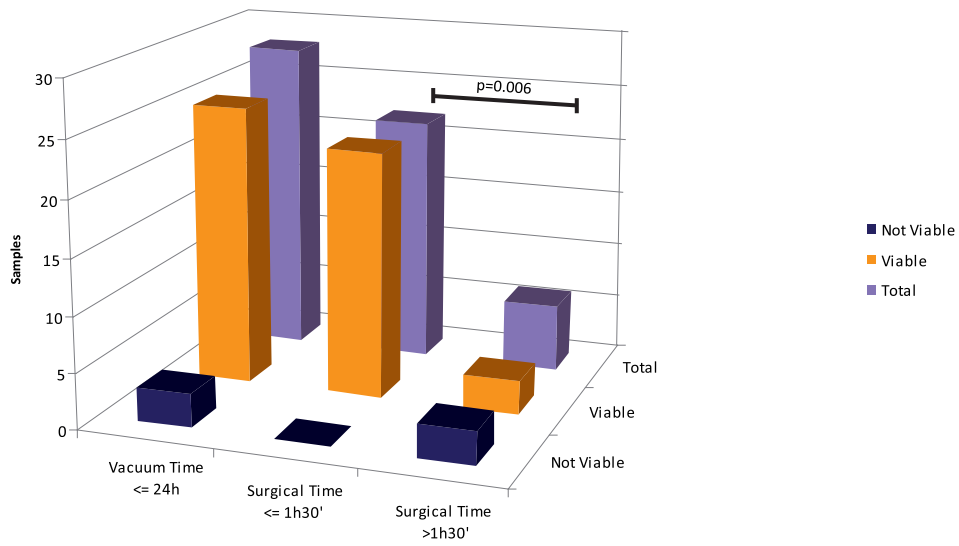


Figure 2. Reciprocal relationship between surgical and VPAC times with cell viability. A: cell viability was 89.3% in specimens with VPAC ≤ 24 h, 84.2% in specimens with $24 < \text{VPAC} \leq 48$ h and 60% in specimens with VPAC > 48 h. B: The critical surgical time was set around 1 hour and 30 minutes, as shown by the drop of cell viability line as compared to the surgical time. This analysis was performed in the subset of specimens with VPAC time ≤ 24 h (in order not to introduce a bias due to long cold ischemia time). C: Assessment of cell viability in specimens with VPAC time ≤ 24 h and comparison with surgical time. The histogram shows the number of viable and not viable cell cultures obtained from samples with a VPAC time ≤ 24 h: total number of specimens with VPAC time ≤ 24 h on the left, specimens with VPAC time ≤ 24 h and surgical time ≤ 1 hour and 30 minutes in the middle, specimens with VPAC time ≤ 24 h and surgical time > 1 hour and 30 minutes on the right. The difference in cell viability between the two groups (surgical time < 1 hour and 30 minutes and surgical time > 1 hour and 30 minutes) was statistically significant ($p = 0.006$, Fisher's exact test). doi:10.1371/journal.pone.0075193.g002

their fixation, i.e. “cold ischemia time”). Both surgical and VPAC times were highly variable (Table 1). For 28 cases the VPAC time was $0 < \text{hours} \leq 24$, for 19 cases it was $24 < \text{hours} \leq 48$, for 2 cases it was $48 < \text{hours} < 72$, for 3 cases it was > 72 hours. Establishment of short-term primary cultures was successfully achieved in 85% of processed samples (44 out of 52), regardless of the specimen size and origin and cellularity of source lesions. Only one case of gastric cancer developed bacterial infection after one day of culture (Table 1, case #2). Cell viability ranged from 84 to 100% (mean: 95.2%) in the 44 obtained primary cultures. Length of both

surgical and VPAC times affected cell viability. Cells preserved a good viability when kept for about 24–48 hours of VPAC at 4°C (Figure 2A), while the critical surgical time was set around 1 hour and 30 minutes (Figure 2B). More specifically, the cut-off time of 1 hour and 30 minutes for surgical time was data-driven as follows: first, we focused on 27 samples with VPAC time ≤ 24 h, in order not to introduce a bias due to a long cold ischemia time. Within such a subgroup we found that with the increased surgical times cell viability was maintained ($\geq 84\%$) up to the cut-off time of 1 hour and 30 minutes (Figure 2B). Beyond that period, cell viability

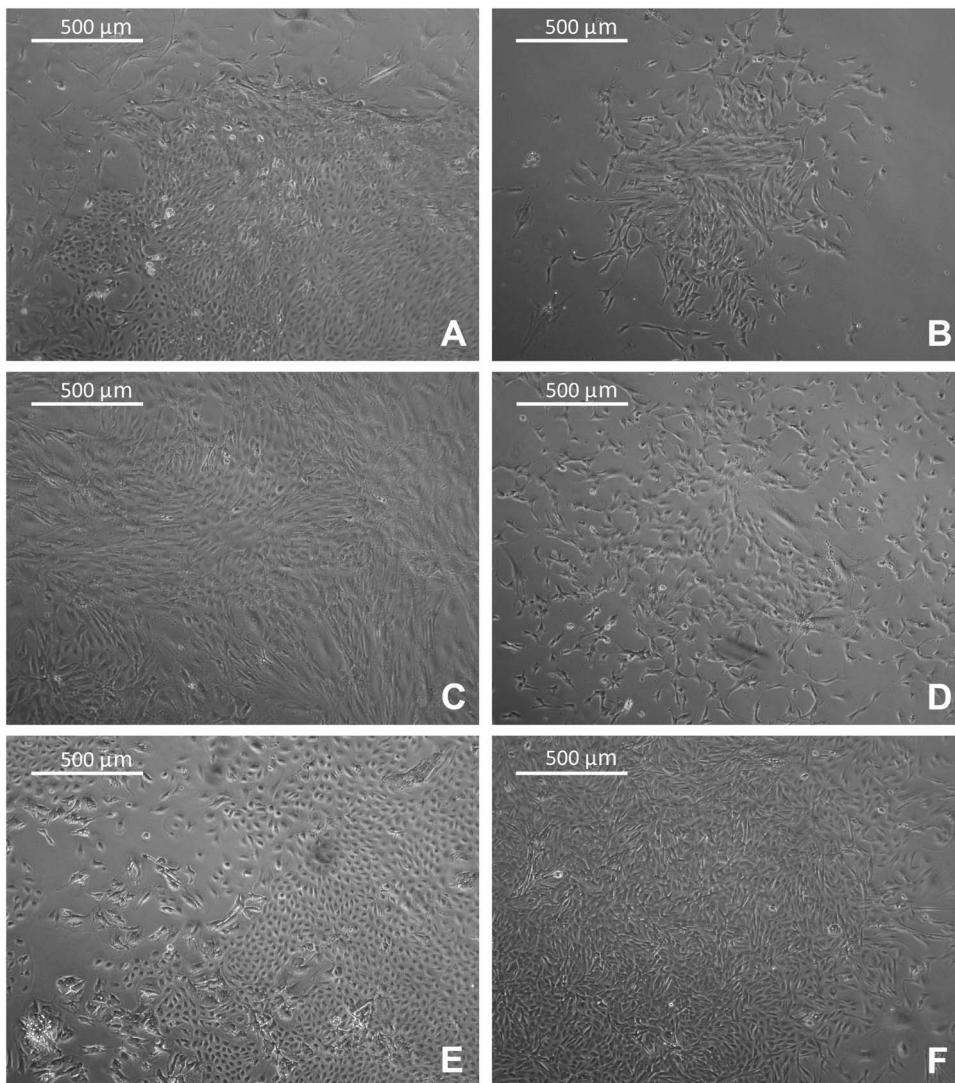


Figure 3. Primary cell cultures in flasks. EVOS inverted microscope images ($4\times$ magnification) of primary cell cultures of tumors from different organs growing adhering to the flasks. A: breast carcinoma; B: colorectal carcinoma; C: lung adenocarcinoma; D: gastric carcinoma; E: pheochromocytoma; F: Hurtle cell carcinoma of the thyroid. doi:10.1371/journal.pone.0075193.g003

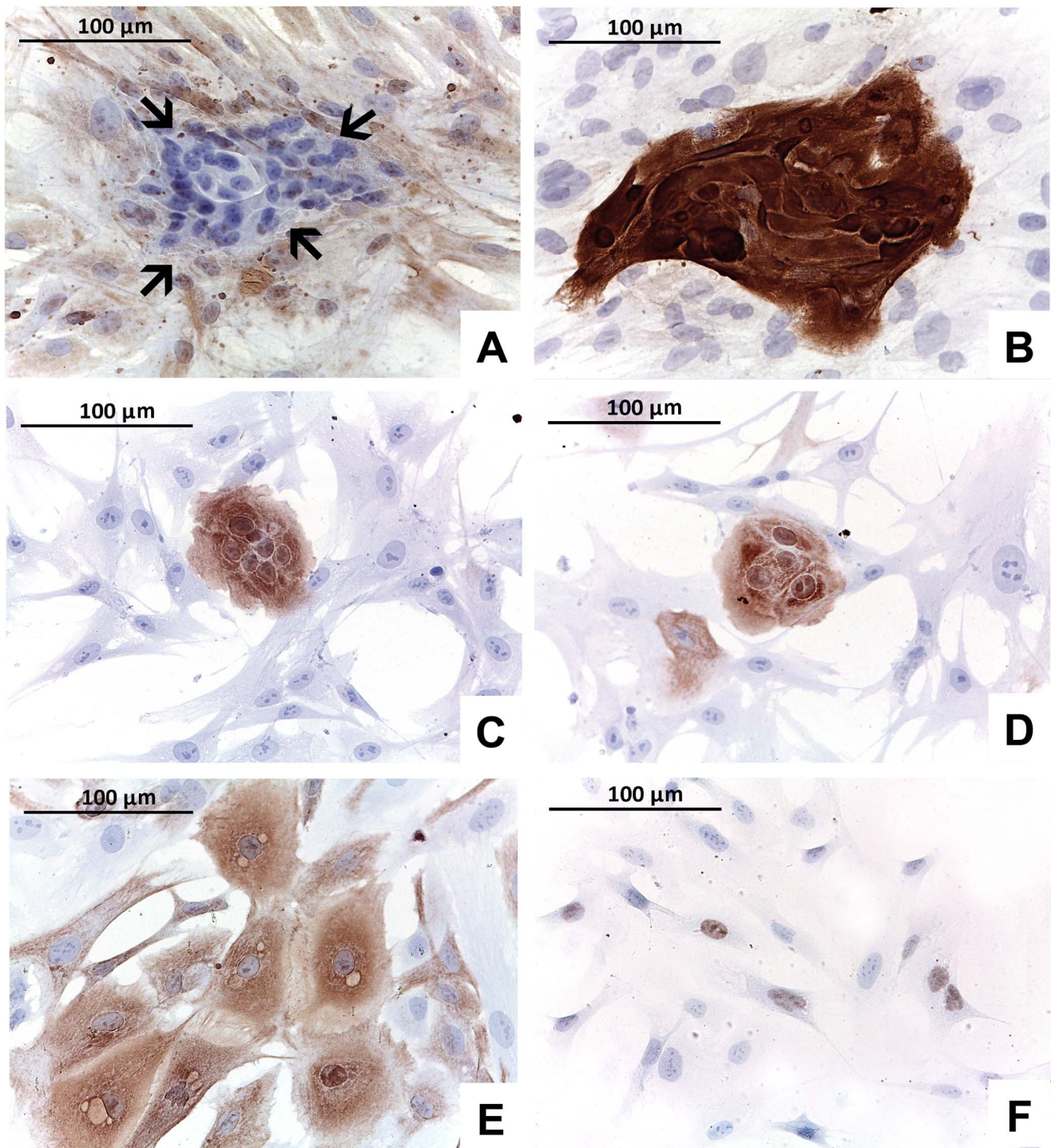


Figure 4. Immunophenotype of cells. A, B: primary culture from an invasive carcinoma of no special type of the breast composed of a mixed population: fibroblasts positive for vimentin (A; arrows indicate epithelial cells) and epithelial cells showing strong cyokeratin-19 positivity (B). C, D: primary culture raised from a lung adenocarcinoma shows epithelial cells positive for cyokeratin-19 (A) and cyokeratin-7 (B). E, F: cells from a primary culture of a Hurtle cell carcinoma of the thyroid show positivity for cyokeratin-19 (E) and TTF1 (F).
doi:10.1371/journal.pone.0075193.g004

dropped to 0% in 3/6 cases, two of which had VPAC time shorter than 5 hours (Table 1 case #1 and #2). The difference in cell viability between the two groups (surgical time <1 hour and 30 minutes and surgical time >1 hour and 30 minutes) was statistically significant ($p = 0.006$, Fisher's exact test) (Figure 2B).

Then, we analyzed the influence of VPAC time on cell viability in more in details. Cell growth was not feasible in 10.7% of specimens with VPAC time ≤ 24 hours, in 15.8% of tissues with $24 < \text{hours} \leq 48$ VPAC time and in 40% of samples with >48 hours VPAC time (no statistically significant differences between the groups) (Figure 2A). However, the examination of the

corresponding histological samples showed preservation of morphology regardless of surgical and VPAC times.

Characterization of Cell Primary Cultures

The relative percentage of stroma *versus* tumor, as derived from histological slides, seemed not to affect the morphology of cell cultures. In 12 out of 44 viable cultures (27%) the cell population had uniform spindle morphology since the first passage (Table 1). Mixed cell population of spindle and epithelioid cells (Table 1, Figure 3, Figure 4) was observed in the remaining 32 (73%) primary cultures. In cultures derived from adenocarcinomas of breast, lung and colon the epithelioid islets were clearly observed within the spindle components (Figure 4). In 12 out of 32 (37.5%) cases the mixed population could be maintained in culture for three passages. However, in the remaining 20 cases (62.5%) spindle cells that exhibited a great propensity to proliferate *in vitro* overgrew epithelioid cells soon after the first passages (Figure 3). The spindle cell overgrowth was variable across the samples and occurred between passage 2 and passage 5. The results of ICC, performed in primary cultures at first passage, confirmed the phenotype of distinct populations (Figure 4). The mutual exclusive expression of cytokeratins in epithelioid cells and of vimentin in spindle cells suggested the epithelial and stromal nature of cultured cells, respectively (Figure 4). A word of caution for the vimentin positivity in cell cultures should be considered because it is not uncommon to observe vimentin expression in cell cultures of epithelial origin [10,11,12]. However in our hand none of the epithelial like cells expressed vimentin, at least at the first passages. Epithelial cells were further characterized by highlighting positivity for tissue-specific cytokeratins, such as cytokeratin-19 for breast and thyroid carcinomas and cytokeratin 7 for lung carcinomas (Figure 4). Cytokeratin-14, studied in breast samples, was expressed neither in the tumor of origin nor in the related cell cultures. TTF1 was instead expressed in thyroid carcinoma and lung adenocarcinomas (Figure 4).

Discussion

In this feasibility study we report on the setting up of primary cultures from VPAC surgical specimens. By sampling tissue fragments from VPAC preserved specimens we achieved a success rate of approximately 85% leading to a collection of short-term tissue cultures from different neoplastic lesions.

Since the adoption at our institution of an innovative method for tissue collection, transport and storage of surgical specimens based on VPAC technology [5,7,8], we have demonstrated in these specimens optimal tissue morphology as well as integrity of antigens for ICC and excellent preservation of nucleic acids to perform molecular analyses [6,9]. We now show a further implementation of VPAC technology.

The establishment of primary cultures of tumor cells is the goal of many laboratories, however the technique is troublesome, time consuming with a very variable performance rate [1,13].

When approaching the creation of cell cultures from fresh tumor lesions, collaboration with the pathology laboratory is mandatory. Although the multi-step process involving the creation of a primary culture should stem from a proper tissue handling and sampling, the impact of pre-analytical variables is usually disregarded. In particular, we showed that the surgical time can influence cell viability. In organ transplantation the surgical time may have different definitions and it remains a topic of debate [14,15,16]. For cell culture the surgical time starts from the vessel clamping during surgical procedure (corresponding to the loss of perfusion or oxygenation) and ends with the organ excision. It has been shown

that significant transcript alterations occur simply as a result of surgical excision [17]. To our knowledge this is the first study that evaluates the effect of the time of surgery on cell viability. We established that the optimal time should be within 1 hour and 30 minutes from the starting of the surgical procedure. During this time the tissue remains alive and is reactive. The temperature of the specimens during surgery decreases very slowly, however disruption of blood flow leads to progressive tissue ischemia and hypoxigenation that cause alterations of cell membrane and receptors, ion regulation, and enzyme systems [18,19].

The cold ischemia time (which in our study corresponds to the VPAC time) starts when the specimen is excised and ends with incision of tissue and placement in a suitable tissue fixative [18,19]. Appreciation of the scientific importance of primary tissue handling procedures is growing, particularly for its impact on preservation of nucleic acids and proteins [20,21,22,23,24]. When dealing with cell cultures and xenograft implantations researchers may ideally wish to collect the sample for experiments directly in the surgery room in order to keep the cold ischemia time as short as possible. However, any such sampling may lead to problems for pathologists in terms of correct gross evaluation of tumor samples (status of surgical margins, staging etc.).

Another issue that should be considered is the optimal temperature to guarantee cell viability. In transplantation pathology it has been shown that a rapid induction of hypothermia at 0–4°C by perfusion of organ with specific solutions better preserves organ viability [25,26]. We have proposed transfer of surgical specimens vacuum-sealed using a chilled plastic box at 4°C [6,7]. Our results suggest the avoidance of insulating air around tissues with the VPAC system allows faster cooling at 4°C. From our experience on nucleic acid preservation [7,9] it seems that it is the prompt cooling that principally influences preservation. This has also been confirmed by independent observations [27] that show that storage at 4°C preserved tissues to a higher degree than storage at room temperature, independently of whether the tissue was subjected to vacuum sealing or not. With this study we prove that VPAC maintains cell viability even after 70 hours, however, as expected, for longer VPAC times, the percentage of cell death increased. Finally, the vacuum sealing in beta-sterilized bags helped prevent bacterial and fungal contamination and consequently, we experienced cell culture infections in only 2% of specimens.

In conclusion, VPAC represented a reliable and reproducible tissue handling protocol for creation of primary cell cultures. Our results also showed how a careful monitoring of surgical and cold ischemia times fostered a good performance of primary tissue cultures. Further studies are needed to more carefully define key parameters governing the reliability of the VPAC method. Nonetheless, the environmentally safe VPAC collection, preservation and storage of surgical specimens already represented a helpful strategy to bridge diagnostic and experimental pathology, offering a new tool for biobanking and improved generation of primary cultures as clinically relevant models of neoplastic lesions.

Acknowledgments

We thank the personnel of the surgical theaters of the Breast Unit at our Institution (Azienda Ospedaliera Città della Salute e della Scienza di Torino) for the fruitful collaboration in setting up and working with the VPAC system.

Author Contributions

Conceived and designed the experiments: AS. Performed the experiments: LA CM RR LC SMRL MSS SB. Analyzed the data: LA CM MG LVdC IC GB AS. Contributed reagents/materials/analysis tools: CM AS. Wrote the paper: AS CM LA.

References

- Speirs V (2004) Primary culture of human mammary tumor cells. In: Pfragner R, Freshney RI, editors. *Culture of human tumor cells*. Wilmington, DE: Wiley-Liss. Pp. 205–219.
- Chung JY, Braunschweig T, Williams R, Guerrero N, Hoffmann KM, et al. (2008) Factors in tissue handling and processing that impact RNA obtained from formalin-fixed, paraffin-embedded tissue. *J Histochem Cytochem* 56: 1033–1042.
- Medeiros F, Rigl CT, Anderson GG, Becker SH, Halling KC (2007) Tissue handling for genome-wide expression analysis: a review of the issues, evidence, and opportunities. *Arch Pathol Lab Med* 131: 1805–1816.
- Mukherjee S (2011) Organ Preservation. In: Reference M, editor. *Drugs, Diseases & Procedures*.
- Berton F, Novi CD (2012) Occupational hazards of hospital personnel: assessment of a safe alternative to formaldehyde. *J Occup Health* 54: 74–78.
- Bussolati G, Annaratone L, Medico E, D'Armento G, Sapino A (2011) Formalin fixation at low temperature better preserves nucleic acid integrity. *PLoS One* 6: e21043.
- Bussolati G, Chiusa L, Cimino A, D'Armento G (2008) Tissue transfer to pathology labs: under vacuum is the safe alternative to formalin. *Virchows Arch* 452: 229–231.
- Di Novi C, Minniti D, Barbaro S, Zampirolo MG, Cimino A, et al. (2010) Vacuum-based preservation of surgical specimens: an environmentally-safe step towards a formalin-free hospital. *Sci Total Environ* 408: 3092–3095.
- Comanescu M, Annaratone L, D'Armento G, Cardos G, Sapino A, et al. (2012) Critical steps in tissue processing in histopathology. *Recent Pat DNA Gene Seq* 6: 22–32.
- Dairkee SH, Blayney CM, Asarnow DM, Smith HS, Hackett AJ (1985) Early expression of vimentin in human mammary cultures. *In Vitro Cell Dev Biol* 21: 321–327.
- Pieper FR, Van de Klundert FA, Raats JM, Henderik JB, Schaart G, et al. (1992) Regulation of vimentin expression in cultured epithelial cells. *Eur J Biochem* 210: 509–519.
- Thepot A, Desanlis A, Venet E, Thivillier L, Justin V, et al. (2011) Assessment of transformed properties in vitro and of tumorigenicity in vivo in primary keratinocytes cultured for epidermal sheet transplantation. *J Skin Cancer* 2011: 936546.
- Wang CS, Goulet F, Lavoie J, Drouin R, Auger F, et al. (2000) Establishment and characterization of a new cell line derived from a human primary breast carcinoma. *Cancer Genet Cytogenet* 120: 58–72.
- Piazza O (2013) Maximum tolerable warm ischaemia time in transplantation from non-heart-beating-donors. *Trends in Anaesthesia and Critical Care* 3(2): 72–76.
- Bernat JL, D'Alessandro AM, Port FK, Bleck TP, Heard SO, et al. (2006) Report of a National Conference on Donation after cardiac death. *Am J Transplant* 6: 281–291.
- Halazun KJ, Al-Mukhtar A, Aldouri A, Willis S, Ahmad N (2007) Warm ischemia in transplantation: search for a consensus definition. *Transplant Proc* 39: 1329–1331.
- Lin DW, Coleman IM, Hawley S, Huang CY, Dumpit R, et al. (2006) Influence of surgical manipulation on prostate gene expression: implications for molecular correlates of treatment effects and disease prognosis. *J Clin Oncol* 24: 3763–3770.
- Hicks DG, Kushner L, McCarthy K (2011) Breast cancer predictive factor testing: the challenges and importance of standardizing tissue handling. *J Natl Cancer Inst Monogr* 2011: 43–45.
- Hicks DG, Kushner L, McCarthy K (2012) Breast cancer predictive factor testing: the challenges and importance of standardizing tissue handling. *J Natl Cancer Inst Monogr* 2011: 43–45.
- Neumeister VM, Anagnostou V, Siddiqui S, England AM, Zarrella ER, et al. (2012) Quantitative assessment of effect of preanalytic cold ischemic time on protein expression in breast cancer tissues. *J Natl Cancer Inst* 104: 1815–1824.
- Pekmezci M, Szpaderska A, Osipo C, Ersahin C (2012) The Effect of Cold Ischemia Time and/or Formalin Fixation on Estrogen Receptor, Progesterone Receptor, and Human Epidermal Growth Factor Receptor-2 Results in Breast Carcinoma. *Patholog Res Int*: 947041.
- Portier BP, Wang Z, Downs-Kelly E, Rowe JJ, Patil D, et al. (2013) Delay to formalin fixation 'cold ischemia time': effect on ERBB2 detection by in-situ hybridization and immunohistochemistry. *Mod Pathol* 26: 1–9.
- Yildiz-Aktas IZ, Dabbs DJ, Bhargava R (2012) The effect of cold ischemic time on the immunohistochemical evaluation of estrogen receptor, progesterone receptor, and HER2 expression in invasive breast carcinoma. *Mod Pathol* 25: 1098–1105.
- Yildiz-Aktas IZ, Dabbs DJ, Cooper KL, Chivukula M, McManus K, et al. (2012) The effect of 96-hour formalin fixation on the immunohistochemical evaluation of estrogen receptor, progesterone receptor, and HER2 expression in invasive breast carcinoma. *Am J Clin Pathol* 137: 691–698.
- Belzer FO, Southard JH (1988) Principles of solid-organ preservation by cold storage. *Transplantation* 45: 673–676.
- D'Alessandro AM, Southard JH (2002) Hypothermic perfusion of the warm ischemic kidney: is 32 degrees C better than 4 degrees C? *Am J Transplant* 2: 689; author reply 690.
- Kristensen T, Engvad B, Nielsen O, Pless T, Walter S, et al. (2011) Vacuum sealing and cooling as methods to preserve surgical specimens. *Appl Immunohistochem Mol Morphol* 19: 460–469.