

# Sexually Dimorphic Genome-Wide Binding of Retinoid X Receptor alpha (RXR $\alpha$ ) Determines Male-Female Differences in the Expression of Hepatic Lipid Processing Genes in Mice

Astrid Kusters<sup>1,9</sup>, Deqiang Sun<sup>2,9</sup>, Hao Wu<sup>3</sup>, Feng Tian<sup>4</sup>, Julio C. Felix<sup>4</sup>, Wei Li<sup>2</sup>, Saul J. Karpen<sup>1\*</sup>

**1** Division of Gastroenterology, Hepatology, and Nutrition, Department of Pediatrics, Emory University School of Medicine, Atlanta, Georgia, United States of America, **2** Division of Biostatistics, Dan L. Duncan Cancer Center, Department of Molecular and Cellular Biology, Baylor College of Medicine, Houston, Texas, United States of America, **3** Department of Biostatistics, School of Public Health, Emory University, Atlanta, Georgia, United States of America, **4** Division of Gastroenterology, Hepatology, and Nutrition, Department of Pediatrics, Baylor College of Medicine, Houston, Texas, United States of America

## Abstract

Many hepatic functions including lipid metabolism, drug metabolism, and inflammatory responses are regulated in a sex-specific manner due to distinct patterns of hepatic gene expression between males and females. Regulation for the majority of these genes is under control of Nuclear Receptors (NRs). Retinoid X Receptor alpha (RXR $\alpha$ ) is an obligate partner for multiple NRs and considered a master regulator of hepatic gene expression, yet the full extent of RXR $\alpha$  chromatin binding in male and female livers is unclear. ChIP-Seq analysis of RXR $\alpha$  and RNA Polymerase2 (Pol2) binding was performed in livers of both genders and combined with microarray analysis. Mice were gavaged with the RXR ligand LG268 for 5 days (30 mg/kg/day) and RXR $\alpha$ -binding and RNA levels were determined by ChIP-qPCR and qPCR, respectively. ChIP-Seq revealed 47,845 (male) and 46,877 (female) RXR $\alpha$  binding sites (BS), associated with ~12,700 unique genes in livers of both genders, with 91% shared between sexes. RXR $\alpha$ -binding showed significant enrichment for 2227 and 1498 unique genes in male and female livers, respectively. Correlating RXR $\alpha$  binding strength with Pol2-binding revealed 44 genes being male-dominant and 43 female-dominant, many previously unknown to be sexually-dimorphic. Surprisingly, genes fundamental to lipid metabolism, including *Scd1*, *Fasn*, *Elovl6*, and *Pnpla3*-implicated in Fatty Liver Disease pathogenesis, were predominant in females. RXR $\alpha$  activation using LG268 confirmed RXR $\alpha$ -binding was 2–3 fold increased in female livers at multiple newly identified RXR $\alpha$  BS including for *Pnpla3* and *Elovl6*, with corresponding ~10-fold and ~2-fold increases in *Pnpla3* and *Elovl6* RNA respectively in LG268-treated female livers, supporting a role for RXR $\alpha$  regulation of sexually-dimorphic responses for these genes. RXR $\alpha$  appears to be one of the most widely distributed transcriptional regulators in mouse liver and is engaged in determining sexually-dimorphic expression of key lipid-processing genes, suggesting novel gender- and gene-specific responses to NR-based treatments for lipid-related liver diseases.

**Citation:** Kusters A, Sun D, Wu H, Tian F, Felix JC, et al. (2013) Sexually Dimorphic Genome-Wide Binding of Retinoid X Receptor alpha (RXR $\alpha$ ) Determines Male-Female Differences in the Expression of Hepatic Lipid Processing Genes in Mice. PLoS ONE 8(8): e71538. doi:10.1371/journal.pone.0071538

**Editor:** Wendong Huang, Beckman Research Institute of City of Hope, United States of America

**Received:** April 19, 2013; **Accepted:** June 28, 2013; **Published:** August 19, 2013

**Copyright:** © 2013 Kusters et al. This is an open-access article distributed under the terms of the Creative Commons Attribution License, which permits unrestricted use, distribution, and reproduction in any medium, provided the original author and source are credited.

**Funding:** Funding was provided by NIH RC1-DK86577 to SJK. The funders had no role in study design, data collection and analysis, decision to publish, or preparation of the manuscript.

**Competing Interests:** The authors have declared that no competing interests exist.

\* E-mail: saul.karpen@emory.edu

9 These Authors Contributed Equally To This Work.

## Introduction

The nuclear receptor (NR) Retinoic X Receptor (RXR $\alpha$ ; NR2B1) is the obligate heterodimerization partner for >14 Class II NRs including: LXR $\alpha$ , $\beta$  (NR1H2,3), PPAR $\alpha$ , $\beta$ , $\gamma$  (NR1C1–3), RAR $\alpha$ , $\beta$ , $\gamma$  (NR1B1–3), FXR (NR1H4), PXR (NR1I2), TR (NR1A1) and VDR (NR1I1) [1]. NRs are ligand activated transcription factors and RXR $\alpha$  is activated by 9-cis retinoic acid and other lipids, as well as by several synthetic ligands (e.g. LG268) [2]. DNA binding sites of Class II NRs consist of 2 half-site motifs based upon the consensus sequence AGGTCA, with variation in the number of nucleotides spaced between the 2 half-sites (from 0–8) that helps direct heterodimer binding affinities. Furthermore, the functionality of RXR $\alpha$ :partner heterodimerization complexes can be categorized as *permissive* (such as FXR, LXR $\alpha$  and PPAR $\alpha$

$\beta$ , $\gamma$ ) or *non-permissive* (such as RAR $\alpha$  and VDR), depending upon their responses to ligands for each partner [1]. Activation of *permissive* heterodimers occurs by ligands for both RXR $\alpha$  and its partner, either independently or together, the latter results in synergistic activation of gene transcription, whereas activation of *non-permissive* RXR $\alpha$  heterodimers occurs through ligand binding of the NR-partner and is unaffected by the presence of an RXR $\alpha$  agonist.

RXR $\alpha$  is primarily expressed in the liver, as well as in many other tissues at lower level, including kidney and gut [3]. The liver plays an essential and often biologically exclusive role in multiple physiological processes including lipid and xenobiotic metabolism, bile formation, nutrient handling, many of whose core effector genes are regulated by RXR $\alpha$ -containing heterodimers. As the

obligate partner, RXR $\alpha$  is central to the regulation of liver gene expression, and its actions are often considered as driven through activation of its multiple permissive partners. The observation that a hepatocyte-specific deletion of the DNA-Binding Domain (DBD) of RXR $\alpha$  in mice resulted in changes in the expression of genes from multiple pathways in the liver, emphasizes the central and pleiotropic role of RXR $\alpha$  and confirms RXR $\alpha$  integrates multiple physiological processes in the liver [4–6].

The existence of gender differences in liver biology has been reported in multiple studies and involves a wide range of hepatic functions [7–10] and sexual dimorphism in hepatic gene expression has been shown for more than 1000 genes in both rats and mice [11–13]. Differential patterns of Growth Hormone (GH) release from the pituitary between males and females is one of the principal determinants of sex differences in hepatic gene expression [14,15]. GH downstream signaling in hepatocytes is mediated by the transcription factor Stat5b and deletion of Stat5b led to a loss of liver sexual dimorphism with down-regulation of approximately 90% of male-specific genes in male mice [11,16], making Stat5b a primary regulator of hepatic sex-specific gene expression [17]. Besides Stat5b, other transcription factors have been identified in regulating hepatic sexually dimorphic gene expression, including Bcl6 [18], HNF6 (Onecut1) and Cux2 (Cutl2) [18]. In addition, roles for sex hormones as well as NRs e.g. HNF4 $\alpha$ ; [19], PPAR $\alpha$  [9,20] and GR [21] have been reported. However, a full regulatory assessment of hepatic sexually-dimorphic gene expression is not entirely explained by differences in GH, sex hormones and the above mentioned transcription factors. Moreover, many hepatic Phase I and Phase II drug-metabolizing and lipid-processing genes are differentially-expressed in males and females, some of these were identified as Stat5b-independent [11,16,22], and this may underlie gender-specific therapeutic drug responses, consequences of hepatic steatosis, and some adverse drug events in humans [23–26]. The majority of these genes are regulated by RXR $\alpha$  heterodimers, yet without a complete delineation of RXR $\alpha$  binding in male and female liver chromatin, knowledge of the underlying contributions of RXR $\alpha$  heterodimers to these pathways remains incomplete and impairs our ability to counter some of these clinically-relevant issues. To begin to close this gap, we sought to determine if sexually-distinct patterns of RXR $\alpha$  chromatin binding in liver would support its role as a relevant regulator of hepatic sexually-dimorphic gene expression of drug metabolizing and lipid processing genes.

## Materials and Methods

### Animals and Treatment

For ChIP-Seq analyses, livers were collected from eight-week-old male and female mice (n = 2/gender). Gavage feeding of LG268 (30/mg/kg/day) for 5 days was performed as described before [6]. Animal protocols and procedures were approved by the Institutional Animal Care and Use Committee Center (IACUC) at Baylor College of Medicine under protocol number AN-2024. During all procedures all efforts were made to minimize suffering of the mice.

### Nuclear extraction and Western blot analysis

Procedures were performed as described before [6,27] and involved n = 4–6 per group.

### Chromatin Immunoprecipitation-sequencing (ChIP-Seq)

For Chromatin Immunoprecipitation for Sequencing, flash-frozen tissues were submitted to Genpathway (San Diego, CA) and

was performed according to their FactorPath protocol [28]. ChIP-quality anti-RXR $\alpha$  antibody (D-20,sc-774X, Santa Cruz Biotechnology, Santa Cruz, CA) [29] and RNA Pol2 (ab24758, Abcam) were used. DNA libraries were sequenced on a Genome Analyzer II by Illumina Sequencing Services.

### Sequence data and ChIP-seq peak calling

RXR $\alpha$  and Pol2 ChIP-Seq reads were processed through Genome Analyzer Pipeline Software (Illumina) and aligned to mouse reference genome mm9 by ELAND with at most 2 mismatches. Reads that appeared more than twice at the same position on the same strand were discarded to remove PCR duplication. MACS [30] was used to identify RXR $\alpha$  peaks at p-value cutoff E-10.

In addition, male peaks and female peaks overlapping by at least 1bp were considered “common” to both genders, otherwise both of these two peaks would be considered “unique”.

For each RXR $\alpha$  peak summit, the number of reads in both male and female samples was counted in a 300bp region centered on the peak summit, and a p-value evaluating gender difference was calculated assuming a Poisson distribution, which was then transformed to a score, which is in fact a signed and scaled p-value, defined as  $\log_2(-10 \cdot \log_{10}(p))$  for stronger male peaks or as  $-\log_2(-10 \cdot \log_{10}(p))$  for stronger female peaks. A score >6 was considered significantly different for male specific peaks, whereas a score <-6 was significantly different for female specific peaks.

For Pol2, the number of reads in the region from transcription starting site to transcription terminating site for each gene was counted in male and female samples, and calculated the Pol2 score for each gene in a similar way as for the RXR $\alpha$  peak score. BED and Wiggle files are stored in the UCSC database (<http://genome.ucsc.edu/>) and can be downloaded using UCSC genome browser. In addition data are submitted to the NCBI Gene Expression Omnibus (GEO) database under GSE21696.

### Validation of ChIP-seq by ChIP-qPCR

Our ChIP-qPCR protocol was modified based on the EZ-ChIP kit protocol from Upstate Biotechnology (Upstate Biotechnology, Lake Placid, NY) and based on the UC-Davis lab protocol [31]. Briefly 300 mg finely crushed mouse liver tissue powder was crosslinked with formaldehyde at 1% final concentration. The reaction was stopped by addition of glycine (125 mM final concentration). 30  $\mu$ g of sonicated chromatin (Bioruptor 300; Diagenode) was pre-cleared with protein-A agarose 50% slurry (Millipore). RXR $\alpha$ -bound genomic DNA regions were isolated using an RXR $\alpha$  antibody (see above) and incubated overnight at 4°C. Nonimmune rabbit IgG was used as negative control. Immune complexes were precipitated with protein-A agarose beads. Protein-DNA cross-links were reversed overnight at 65°C. DNA was purified using PCR purification columns (Qiagen, Valencia, CA). Levels of transcription factor occupancies at chromatin were determined by Realtime quantitative PCR (SYBrGreen, Applied Biosystems). Input and immunoprecipitated DNA reactions were performed in duplicate. Fold differences relative to control were expressed as mean  $\pm$  SEM. Primer sequences are available upon request.

### Microarray data analysis and validation by qRT-PCR

Microarray hybridization, analysis and normalization on mouse male and female liver using Illumina Ref6v2 was performed by the core facility of Children’s Nutrition Research Center at Baylor College of Medicine, and data was submitted to the GEO database under number GSE21696. RNA isolation, cDNA and

quantitative realtime PCR was performed as described before [6,27]. Primer sequences are available upon request.

Comparison of ChIP-seq data with Microarray Gene Expression was performed using Microsoft Access database and Venn diagram generator [32]. Functional Annotation by Ontology and pathway analysis was performed using DAVID [33].

## Results

### Whole genome and sexually dimorphic RXR $\alpha$ binding in mouse liver chromatin by ChIP-Seq

Both male and female mice were used to determine genome-wide RXR $\alpha$  binding with ChIP-Seq and thus explore potential roles for RXR $\alpha$  in gender-specific liver biology. ChIP-Seq analysis revealed 47,845 RXR $\alpha$  binding sites in male mouse liver and 46,877 in females, of which 37,602 (~80%) were common, leaving 10,243 and 9,275 sites unique in male and female livers respectively (Fig. 1A; Table S1A in File S1). To determine transcriptional activity correlating with RXR $\alpha$  binding, ChIP-Seq analysis for Pol2 was performed, which revealed 25,344 active sites in males and 20,639 sites in females, with an overlap of 19,307 sites (Fig. 1B, Table S1A in File S1). The overall greater male Pol2 binding was reflected by an asymmetric and substantial male-specific representation (6,037 male-specific vs. 1,332 female-specific).

There were nearly an equal number of genes in both genders (12,771 male and 12,693 female) associated with RXR $\alpha$  binding sites, with the vast majority (11,660/~92%) in common (Fig. 1C). Overall, this indicates an average of ~3–4 RXR $\alpha$  binding sites in each of the >12,500 expressed and potentially RXR $\alpha$ -regulated genes in mouse liver. Taken together, this large number of common and gender-specific RXR $\alpha$  binding sites in male and female livers (>45,000) spread across ~12,000 genes makes RXR $\alpha$ , to our knowledge, one of the most broadly distributed transcription factor in mouse liver chromatin found to date. No significant differences in RXR $\alpha$  binding site geographic distribution profiles or in chromosomal distribution for RXR $\alpha$  and Pol2 binding sites were noted between genders (Fig. S1A and S1B).

RXR $\alpha$  RNA levels are highest in liver compared to other mouse tissues [3], yet it was unknown if RXR $\alpha$  nuclear protein levels were differentially represented in male and female mouse livers, which could impact upon the differential binding. Surprisingly, even though there are slightly more RXR $\alpha$  binding sites in male compared to female liver chromatin, soluble nuclear quantities of RXR $\alpha$  were substantially greater in female than in male liver nuclei (Fig. 1D). These studies indicate that the genome-wide ChIP-Seq dataset, rather than the absolute levels detected by immunoblot, more accurately inform the potential regulatory roles played by RXR $\alpha$  in mouse liver.

With the large number of binding sites found, it was imperative to develop workable definitions to focus on those RXR $\alpha$  sites most likely involved in regulation of hepatic gene expression. First we looked at peak height as a measure of RXR $\alpha$  binding strength, and peak height distribution was arbitrarily divided as described in methods. Fig. 1E shows that for 440 male peaks (401 genes) the peak count was higher than 300 and this was the case for only 5 peaks in female mice (5 genes) (Tables S1B and S1C in File S1), suggesting a group of sites with overall stronger binding of RXR $\alpha$  in male liver compared to female liver. This is in contrast to expectations based on the higher nuclear protein levels of RXR $\alpha$  in female mice as shown on western blot in Fig. 1D.

As has been noted in other transcription factor ChIP-Seq analyses, a minor fraction (13%) of RXR $\alpha$  binding sites was located within 500 bp of the Transcription Start Site (TSS), while

a substantial proportion (42%) bound in intronic regions and intergenic (38%) regions (Fig. 1F, Table S1D in File S1).

RXR $\alpha$  binding sites present within the span from 10 kb upstream to 10 kb downstream of the TSS were considered more likely to be “promoter and enhancer regions” and contain the most common gene regulatory regions involved in direct regulation of gene transcription. With this delineation, 16,898 RXR $\alpha$  binding sites in male liver (associated with 9,361 genes), and 15,870 RXR $\alpha$  binding sites (associated with 9,228 genes) in female liver were identified. The majority (8076) of these genes were represented in both genders, with 1285 specific for male liver and 1152 for female (Fig. 2A). Further exploration of these highly sexually-differential RXR $\alpha$  binding occupancies ensued to see if they uncovered new sexually-regulated genes.

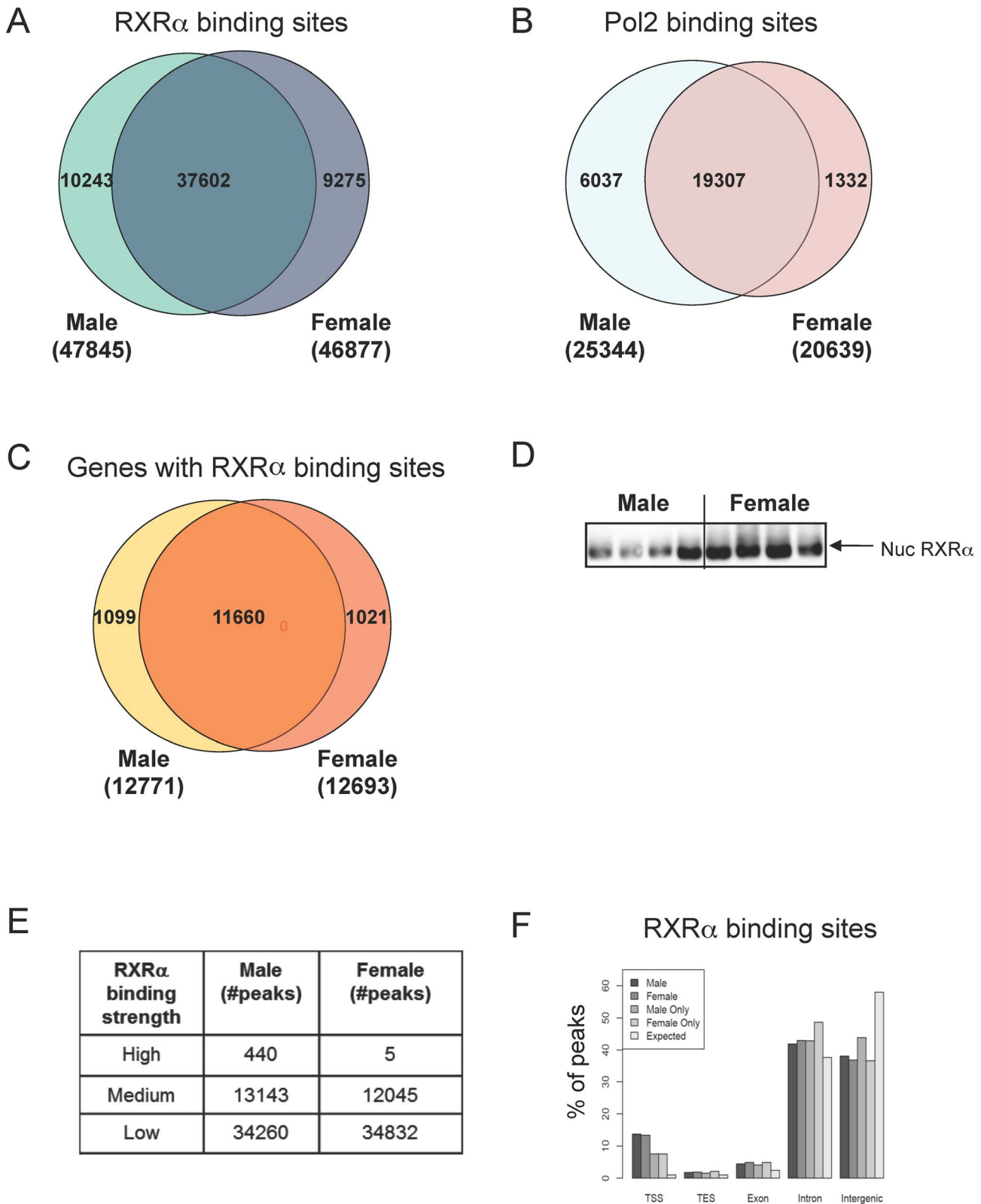
### Ontology and pathway analyses

Ontology and pathway analysis of these RXR $\alpha$ -bound genes showed that a number of biological pathways were commonly represented in both genders, including lipid and steroid metabolism; however the genes within the pathways were not identical between genders (Fig. 2B). Gender-specific ontological functions and pathways included fatty acid metabolism and complement-mediated immunity and coagulation for male livers and transport function and glucose metabolic pathways in female mice (Fig. 2B; Table S2A–B in File S1).

### Graphic representation of RXR $\alpha$ -binding linked with Pol2 gene occupancy – the “RXR $\alpha$ +Pol2 Score”

Functional assignment of the potential relevance of RXR $\alpha$  binding is predicated upon whether or not the associated gene is transcribed by Pol2. To initially explore such assignments, prioritization was determined for each gene by incorporating a score for both RXR $\alpha$ -binding and Pol2-binding strengths, based upon RXR $\alpha$  peak height and the integration of Pol2 binding peak heights over the length of the gene (see Methods). By comparing RXR $\alpha$  peak height at each binding site between genders, and linking these gender-ranked RXR $\alpha$  binding strength scores to Pol2 occupancy of the gene in question, an RXR $\alpha$ +Pol2 scoring classification was established. This score was used to identify binding sites that differed, or were common, in male and female livers with strengths stratified as High (>6), Medium (3–6) or Low (<3) (Table 1). Of the genes with the strongest significant differences in RXR $\alpha$  peak height between genders (those with a score >6), 1945 genes exhibited male-specific RXR $\alpha$  binding (associated with 2996 RXR $\alpha$  binding sites), and 1214 genes were strongly associated with 1689 female-specific RXR $\alpha$  peaks. There were 283 genes (with 718 gender-dispersed strong RXR $\alpha$  peaks) common to both genders (Table 2, Table S3A–E in File S1). Of the strongest differences in Pol2 binding sites, 528 RXR $\alpha$  peaks were associated with 72 genes with a Pol2 score>6 in male livers, while for females 82 genes had a Pol2 score >6, with an associated 602 RXR $\alpha$  peaks (Table 2, Table S3F–G in File S1).

Combining all significant gender-specific RXR $\alpha$ -binding and Pol2-binding scores identified those sexually-dimorphic transcriptionally active genes with sexually-dimorphic RXR $\alpha$  binding. After applying these criteria for strong RXR $\alpha$  and Pol2 binding (RXR $\alpha$ >6 & Pol2>6), we found that male mouse liver chromatin contained 146 RXR $\alpha$  peaks associated with 44 male-specific genes while in female livers, 86 RXR $\alpha$  peaks correlated with 43 female genes (0.001% of total genes). This is represented in graphic form (Fig. 3A) with the gender-enriched gene names listed alongside the graph (see Table S4A–B in File S1 for scores). Altogether, this new analysis provides a window into RXR $\alpha$ -dependent transcriptional competencies unique to male and female livers. Both individual

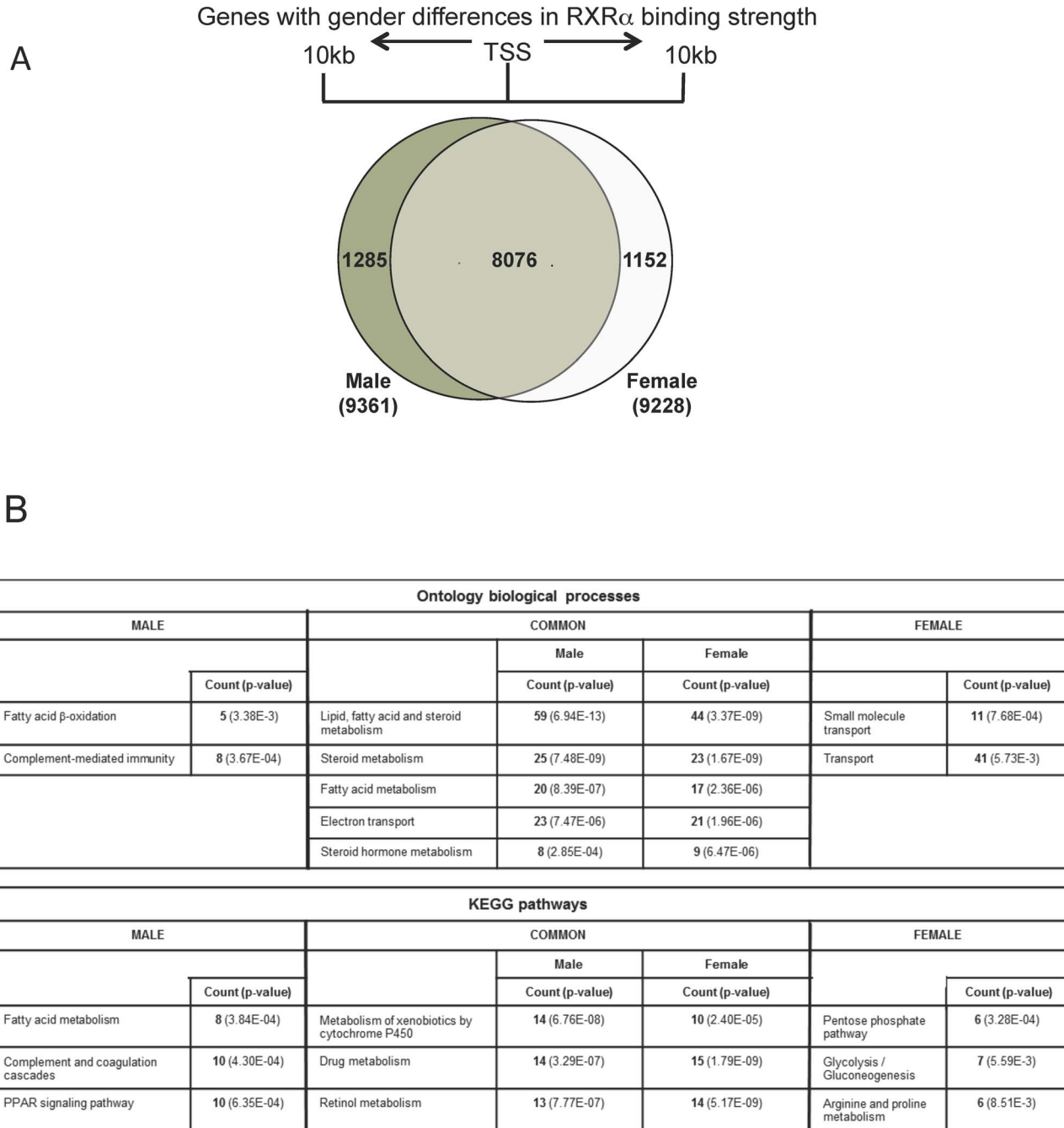


**Figure 1. Genome wide mapping of RXR $\alpha$  and Pol2 binding sites in male and female mouse liver.** A) Venn diagrams show number of RXR $\alpha$  binding sites in male and female livers with 37602 binding sites shared between genders, and 10243 unique RXR $\alpha$  male and 9275 unique RXR $\alpha$  female binding sites (see also Table S1A and S1B in File S1). B) Venn diagrams show number of Pol2 binding sites in male and female livers, with 19307 binding sites shared between genders, and 6037 unique male and 1332 unique female Pol2 binding sites. C) Venn diagrams representing number of genes associated with RXR $\alpha$  peaks shown in A), with 11660 genes shared between genders, and 1099 unique genes for male and 1021 genes for female. D) Western blot analysis shows increased nuclear RXR $\alpha$  protein levels in female mouse liver compared to male mouse liver. E)

Number of RXR $\alpha$  peaks as stratified by peak height (see also Table S2A and S2B in File S1). F) Genomic positions of RXR $\alpha$  binding sites in male and female mouse liver. Data expressed as percentage of total peaks per gender. RXR $\alpha$  binding was significantly increased at TSS (+/-500 bp), TES, within exons and introns with a depletion in binding compared to the expected number of sites based on random distribution (see also Fig. S1A and S1B). doi:10.1371/journal.pone.0071538.g001

gene evaluation and ontological pathway [34] analyses revealed an enrichment of genes in sterol, metabolic (lipid & glucose) and phase I & II detoxification pathways (Fig. 3B; Table S4C–D in File S1). Among the male-specific genes identified with this

analysis were some that were previously determined to be male-enriched (e.g. Cyp7b1, Hsd3b5) but many that were not previously recognized (e.g. Ttc39c, Egfr, 2810007J24Rik). Similarly, in female livers, Sult3a1 and members of the Cyp2 and Cyp3



**Figure 2. RXR $\alpha$  and Pol2 binding sites in mouse liver 10 kb surrounding the Transcriptional Start Sites.** A) Venn diagram showing number of genes with shared RXR $\alpha$  regulation between male and female within 10 kb up and downstream of TSS, with 1285 genes found in male only and 1152 regulated by RXR $\alpha$  in females (see also Table S3A–D in File S1). B) Ontology analysis and pathway analysis of RXR $\alpha$  peaks with score >6 or <-6 located within +/-10 kb of TSS (see also Table S3E–F in File S1). doi:10.1371/journal.pone.0071538.g002

**Table 1.** Stratification of RXR $\alpha$  binding sites in male and female mouse liver according to binding.

RXR $\alpha$ -peak score	Male#peaks	Female#peaks
High >6	3428	2140
Medium 3–6	17842	16793
Low 0–3	26586	27932
Pol2 score	Male # RXR $\alpha$ peaks	Female#RXR $\alpha$ peaks
High >6	528	602
Medium 3–6	3987	2949
Low 0–3	43327	43315

doi:10.1371/journal.pone.0071538.t001

families were known to be female-dominant, but several others, especially those engaged in core sterol and lipid processing pathways were unexpectedly enriched. These include *Scd1*, *Fasn*, *Pnpla3*, *Elovl6*, *Rgs16* and *Lpin1*. Of note, several of these genes have polymorphisms strongly linked to altered metabolic physiological outcomes, specifically related to obesity and lipid handling [35–43]. It was this unexpected limited roster of genes enriched in sterol and lipid processing pathways, identified by employing the combined RXR $\alpha$ +Pol2 scoring that led to further explorations of the role of RXR $\alpha$  in the expression of these key metabolic genes.

### Representative ChIP-Seq maps of sentinel sexually-dimorphic genes

RXR $\alpha$  and Pol2 binding to a male-enriched (*Cyp7b1*), and female-enriched gene (*Pnpla3*; Fig. 4) highlight the power and utility of the RXR $\alpha$ +Pol2 assay approach. Note the ability of the algorithm to identify genes with strong RXR $\alpha$ -associated gender-specific binding and transcription, even in the presence of additional RXR $\alpha$  binding on liver chromatin of the opposite gender (e.g. several adjacent male RXR $\alpha$  peaks in *Pnpla3*, Fig. 4 + Fig. S2). RNA quantification from mouse liver samples confirmed the strong sexually-dimorphic expression of these genes (Fig. 4C). Maps of other genes with RXR $\alpha$  and Pol2 scores >6 that underwent further analyses are shown in Fig. S3 (i.e. ChIP-Seq maps and RNA quantification for *Elov6*, *Scd1*, *Lpin1*, *Elovl3*, *Hsd3b5*, *Sult3a1*). Sexually-dimorphic expression of the *Pnpla3* gene, which is known to be regulated by *Srebp1c* [44,45] (but not known to be regulated by RXR $\alpha$  heterodimers) with a polymorphism (I148M) strongly associated with fatty liver disease, has not

**Table 2.** Stratification of RXR $\alpha$  binding sites in male and female mouse liver according to peak score.

	Mal#peaks	Female#peaks
<b>All RXR<math>\alpha</math> peaks &gt;6</b>	3428	2140
<b>Unique genes</b>	2227	1498
<b>Gender specific RXR<math>\alpha</math> peaks &gt;6</b>	2996	1689
<b>Gender specific unique genes</b>	1945	1214
<b>Overlap RXR<math>\alpha</math> peaks &gt;6</b>	718	718
<b>Unique genes</b>	283	283
<b>Gender specific Pol2 peaks &gt;6</b>	528	602
<b>Gender specific unique genes</b>	72	82

doi:10.1371/journal.pone.0071538.t002

been reported beforehand. The consequences of this polymorphism in relation to PNPLA3 function and hepatic lipid handling are not fully known [46].

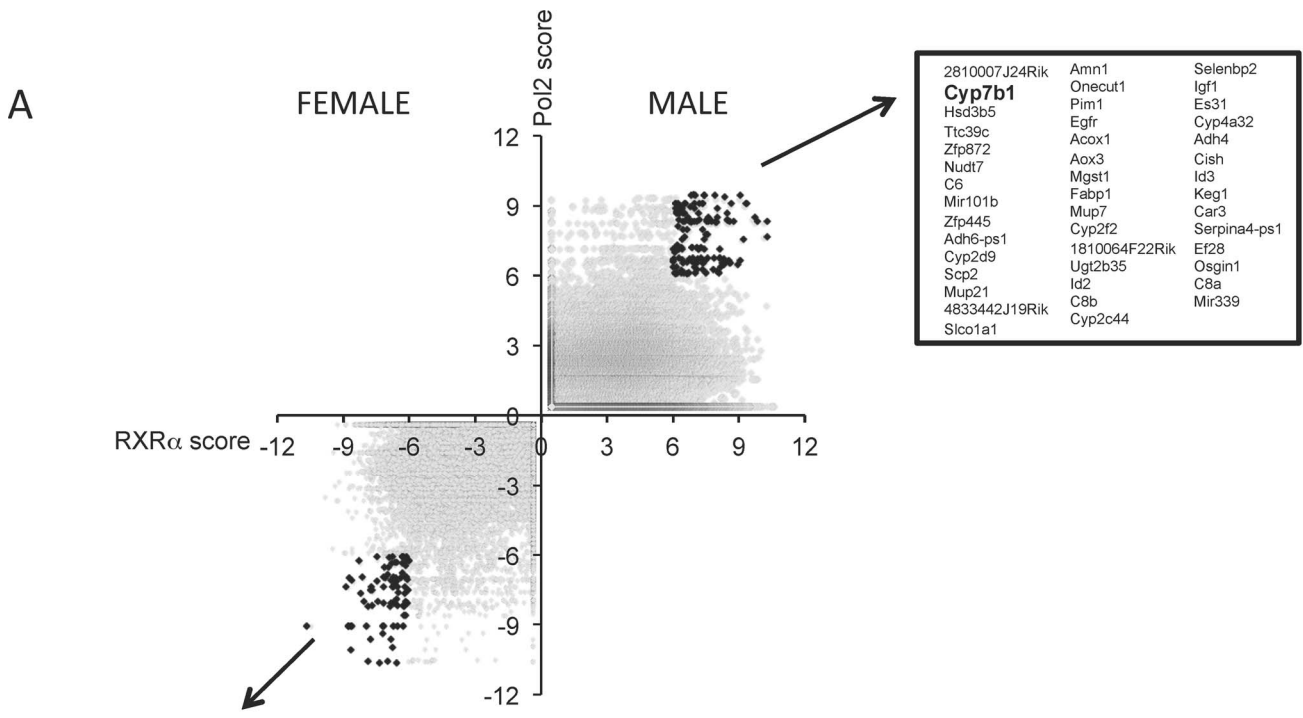
### Incorporation of gene expression levels into the ChIP-Seq RXR $\alpha$ +Pol2 analyses

RNA expression levels in male and female mouse livers were determined by microarray analyses and correlated with RXR $\alpha$  and Pol2 binding strengths. This analysis revealed that the RNA expression levels were, in aggregate, highest when both RXR $\alpha$  and Pol2 binding were present (Fig. 5A). In addition, binding of RXR $\alpha$  and Pol2 surrounding the TSS was most strongly correlated with higher gene expression levels in both male and female mouse liver (Fig. 5B). Differentially-expressed male-female genes using RNA levels (employing a cutoff of a 1.5 fold change in expression in either direction), resulted in 846 male-enriched and 613 female-enriched genes. Correlation of strong RXR $\alpha$  binding sites (score >6) to sexually-dimorphic RNA levels, identified 142 genes (395 RXR $\alpha$  peaks) in male livers, and 117 genes (305 RXR $\alpha$  peaks) in female livers (Fig. S4A; Table S5A–B in File S1), many of which were previously identified as gender-specific [11,47,48]. Further analysis correlated strong sexually-dimorphic Pol2-binding with RNA levels in 23 male-specific genes and 24 female-specific (Fig. S4B, Table S5C–D in File S1). Finally, incorporating all 3 analyses (RXR $\alpha$  peaks with score >6, Pol2 binding score >6, and RNA levels FC>1.5, p<0.1) with regards to gender-specific enrichment, 21 genes were identified for male and 19 for females (Fig. 5C, Table S5E–F in File S1). Of note, there is significant enrichment of lipid and steroid-processing genes when RNA levels are incorporated into the RXR $\alpha$  +Pol2 score, including PNPLA3 in female livers and *Cyp7b1* in male livers, overall validating the utility of the RXR $\alpha$ +Pol2 score as a means of identifying genes with strong RXR $\alpha$  binding sites that are likely to be highly regulated by RXR $\alpha$ -containing heterodimers. We next sought to validate such ChIP-Seq based analyses and their potential to identify RXR $\alpha$ -regulated genes with *in vivo* studies using the potent RXR $\alpha$  agonist, LG268.

### Responses of mouse livers to the RXR $\alpha$ agonist LG268

In order to determine gender and gene-specific capability to respond to an RXR $\alpha$  ligand, male and female mice were given the RXR $\alpha$  ligand (rexinoid) LG268 daily for 5 days by gavage feeding, followed by analysis of RXR $\alpha$  binding by ChIP-qPCR and RNA quantification. RXR $\alpha$  binding to upstream regions of *Pnpla3* and *Elovl6* genes was increased (1.8–4.7-fold) in male mice when given the ligand, with an even greater increase in binding in LG268-treated female mice (3.0–10.2-fold; Fig. 6B). However, binding of RXR $\alpha$  in response to LG268 was not changed for the male gene binding sites for *Cyp7b1* and *Hsd3b5* (Fig. 6B). LG268 treatment increased RNA levels of *Pnpla3* in both male and female livers ~9–12 fold, and given the substantially greater expression in females, led to an overall 50-fold higher expression of *Pnpla3* RNA in LG268-treated female livers than males treated with vehicle alone (Fig. 6A). A similar pattern of changes was noticed for *Elovl6*. Interestingly, RNA levels of male-specific genes *Cyp7b1* and *Hsd3b5* were repressed by LG268 (Fig. 6A). Liver triglyceride (TG) levels increased 2-fold in male mice given LG268, bringing the male liver TG content in line with the basally higher TG content of female livers (Fig. S5), indicating physiological relevance of our findings of hepatic TG levels in response to RXR $\alpha$  activation.

Moreover, LG268 increased RXR $\alpha$  binding site occupancy in the sentinel female-specific genes (*Pnpla3*, *Elovl6*) in both male and female mouse livers, more so in females than males



Sult3a1	Dusp6	Cyp7a1
Cyp2b13	Btg1	Cyp2b9
Cyp2a4	9030619P08Rik	1810011010Rik
Cyp2c39	Igfbp1	Ccrn4l
Rgs16	Mt1	Elovl6
Cyp3a44	A1bg	Ppp1r3b
Cyp3a11	Hmgcr	Agxt2l1
Aldob	Sult1d1	Mir802
Bhlhe40	Rsph4a	Slc38a2
Hamp2	Pygl	Gstt3
Scd1	Klf10	Arrdc4
Lpin1	Fmo3	Upp2
<b>Pnpla3</b>	Me1	Arg1
Fasn	Nemt	Agt
Dusp1		

**B**

Ontology biological processes						
MALE		COMMON			FEMALE	
	Count (p-value)		Male Count (p-value)	Female Count (p-value)		Count (p-value)
Complement-mediated immunity	3 (5.06E-3)	Lipid, fatty acid and steroid metabolism	11 (2.37E-06)	15 (1.41E-09)	Steroid hormone metabolism	4 (2.27E-04)
		Steroid metabolism	7 (6.20E-06)	10 (2.53E-09)		
		Fatty acid metabolism	5 (6.49E-04)	8 (3.38E-07)		
		Electron transport	5 (0.002784)	8 (4.74E-06)		

KEGG pathways						
MALE		COMMON			FEMALE	
	Count (p-value)		Male Count (p-value)	Female Count (p-value)		Count (p-value)
Fatty acid metabolism	3 (1.26E-2)	Metabolism of xenobiotics by cytochrome P450	4 (1.92E-3)	5 (1.20E-04)	Drug metabolism	4 (8.65E-04)
Complement and coagulation cascades	3 (3.29E-2)	Drug metabolism	4 (2.76E-3)	7 (3.45E-07)	Steroid hormone biosynthesis	3 (1.37E-2)
		PPAR signaling pathway	4 (3.20E-3)	3 (3.93E-2)	Linoleic acid metabolism	3 (1.42E-2)
		Retinol metabolism	3 (2.74E-2)	6 (5.75E-03)	Arachidonic acid metabolism	3 (4.30E-2)

**Figure 3. Sexual dimorphic RXR $\alpha$ -dependent gene regulation in mouse liver.** A) Scatter plot of RXR $\alpha$  scores correlating with Pol2 scores. Genes identified having a RXR $\alpha$  and Pol2 score  $>6$  for male and  $<-6$  for females are represented by the black dots, with the grey dots representing correlation of all genes. Genes listed in order of RXR $\alpha$  score high to low (see also Table S5A and S5B in File S1). B) Ontology analysis and pathway analysis of genes with an RXR $\alpha$  and Pol2 score  $>6$  for male and  $<-6$  for females (see also Table S5C and S5D in File S1) doi:10.1371/journal.pone.0071538.g003

(Fig. 6), while there were variable and more modest effects of LG268 on RXR $\alpha$  binding in male-enriched sites. Whether or not this is a consequence of a greater abundance of RXR $\alpha$  in female than male liver nuclei remains to be determined (Fig. 1D).

## Discussion

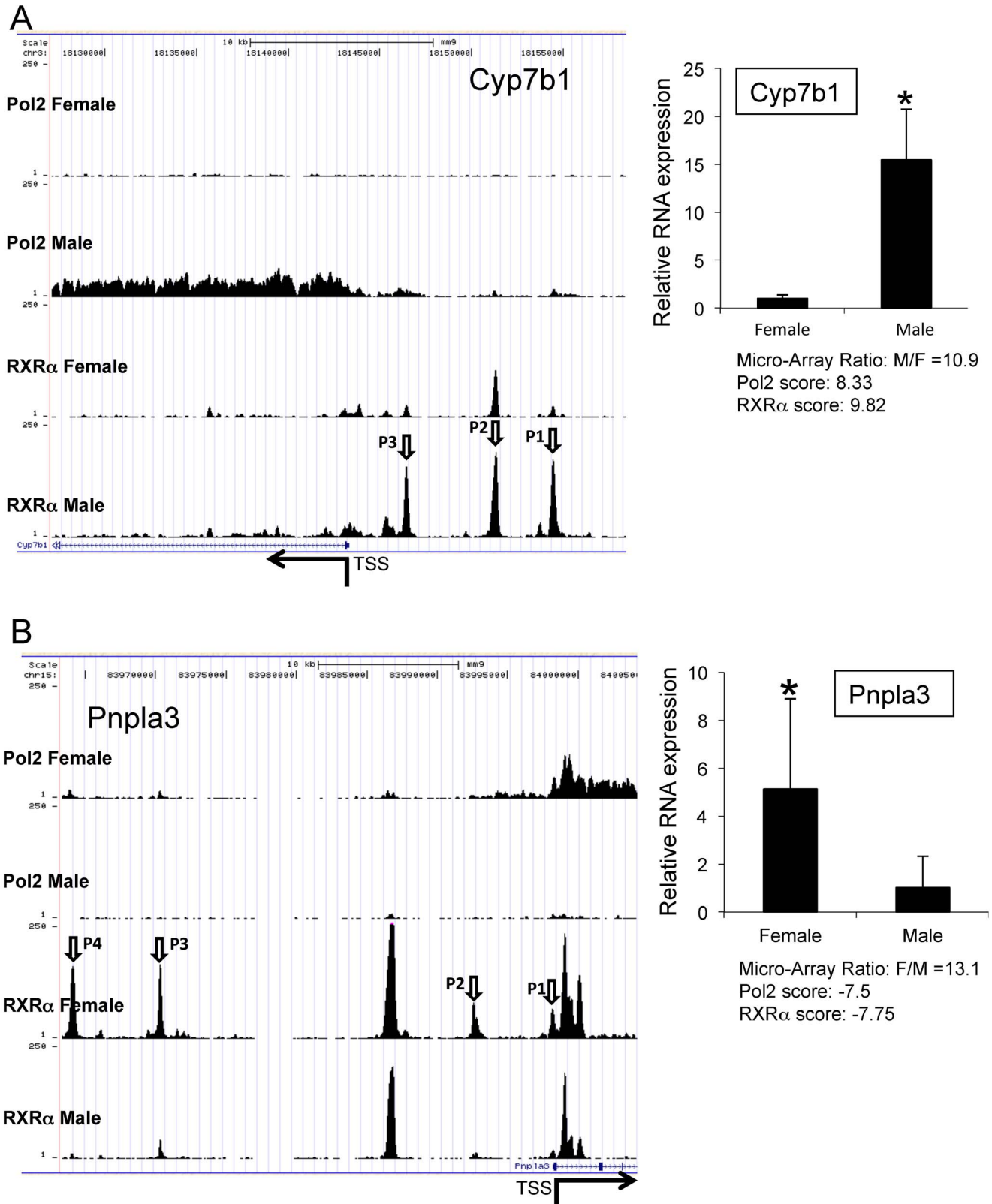
In this study we identified genome-wide binding sites for RXR $\alpha$  and Pol2 in mouse liver and discovered sexually-distinct binding patterns in males and females that were enriched in sterol and lipid processing genes. To our knowledge, the number of binding sites determined in this study for RXR $\alpha$  in both genders ( $>45,000$ ) is the most for any known transcription factor, correlating with  $\sim 50\%$  of all mouse genes, and  $32\%$  of liver-expressed genes (based on RNA levels and probe sets of total mouse genome present in our microarray dataset). Given the extensive binding in mouse liver chromatin, RXR $\alpha$  as an essential heterodimer partner to Type 2 NRs, should be considered as a natural focus for exploring the core mechanisms underlying the metabolic machinery, and response to the intracellular environment of the metabolically-active hepatocyte. The vast number of binding sites found for RXR $\alpha$  in this study correlates well with its broad-based function in liver due to heterodimeric partners and the associated large number of binding sites with each of the known dozen partner NRs expressed in liver [49]. Overlapping sites have been found for FXR, PPAR $\alpha$ , LXR $\alpha$  [28,29] indicating many of these sites are functional. Functionality and partner-identification of the remaining sites will have to be determined in future studies that incorporate ChIP-SEQ with ligand and mechanistic analyses.

RXR $\alpha$  binding to chromatin was enriched in male mouse liver for 1945 genes and 1214 genes in females which included both new and previously-identified hepatic gender specific and enriched binding sites and genes. Though the main physiological processes that were found associated with RXR $\alpha$  binding were similar between genders, including lipid, sterol and drug related metabolism processes, different genes within these same process/pathways were enriched for RXR $\alpha$  binding in each gender, indicating potential differential roles for RXR $\alpha$  regulation of these pathways. Moreover, a new analytical tool was developed that incorporated RXR $\alpha$  binding strength with Pol2-binding strength of an assigned closest gene. Using this analysis, a surprisingly small and metabolically-relevant list of genes was identified—44 male and 43 female enriched genes, the majority involved in drug or lipid metabolism. The gender-discrepancy in lipid processing genes and RXR $\alpha$  binding was unexpected and identified RXR $\alpha$  dependent sexually-dimorphic binding as a major player in lipid metabolism.

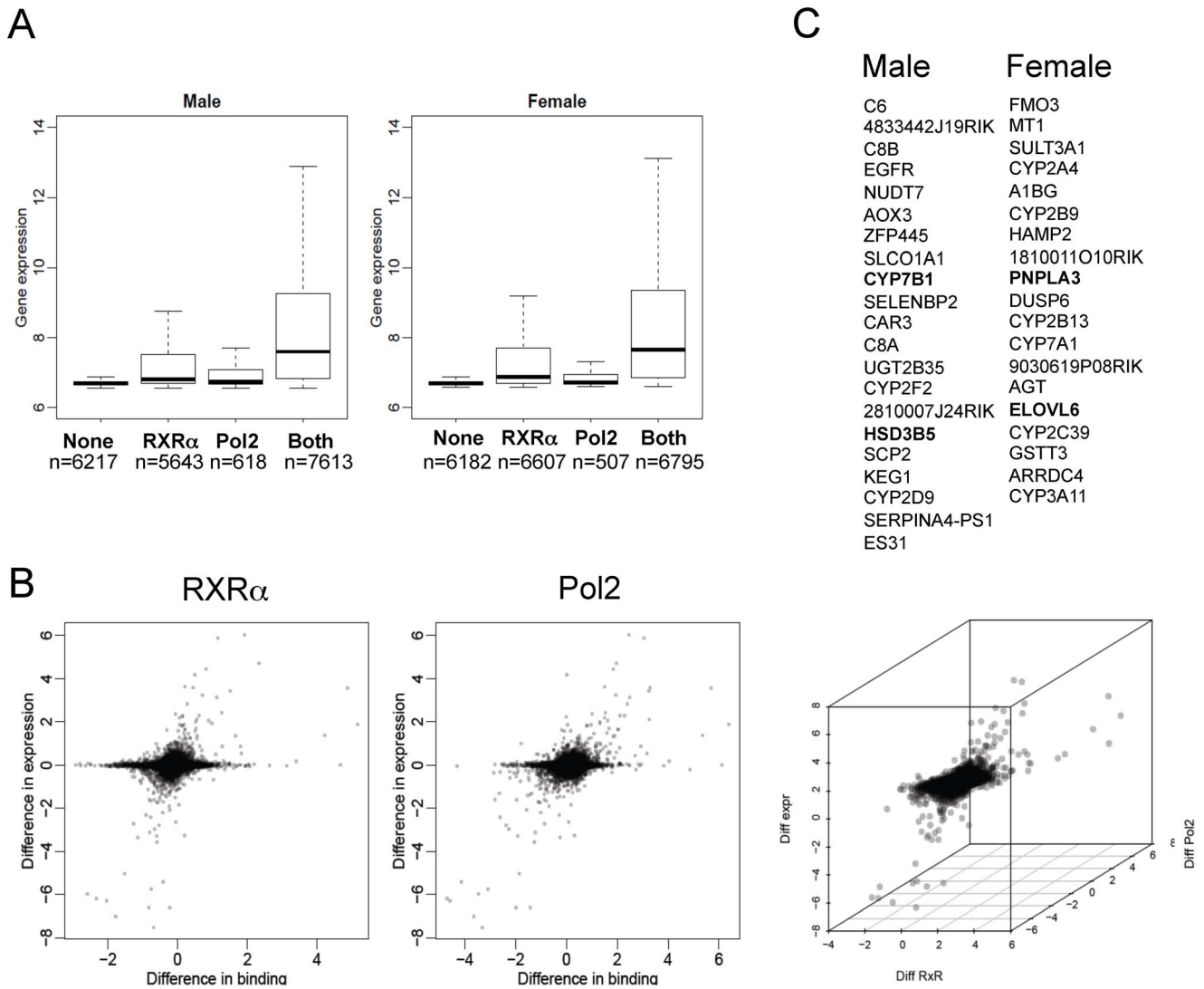
Effective handling of hepatic lipids likely directs whether or not an organism develops pathophysiological consequences of fat accumulation, with direct links to the most common form of liver disease in humans – Non-alcoholic fatty liver disease (NAFLD) [50]. With the worldwide increase in obesity, NAFLD is a leading cause of chronic liver disease, affecting about 20–25% of the general population worldwide, 20–30% of which may progress to cirrhosis [51–55]. Lipid metabolism is gender-dimorphic [56], and NAFLD appears to be more prevalent in men than women, both in adults and in pediatric populations [57–61]. In mice, gender differences in hepatic lipid composition was shown, and livers of

female mice contained twice the amount of total lipids compared to male mouse livers [62]. Sex-differential expression in metabolism-related genes in response to high fat diet [63,64] have been observed as well and it appears that female livers have a superior capability of handling of changes in lipid concentrations and maintaining homeostasis. We found higher binding of RXR $\alpha$  to female hepatic chromatin for the essential lipid processing genes including Pnpla3, Lpin1, RGS16\_ENREF\_119, Elovl6, SCD1 and Fasn (see below), supporting a central role for RXR $\alpha$  in mediating these differences. In addition, LG268-activated RXR $\alpha$  showed higher induction of lipid-related gene expression in female compared to male mice, but without higher induction of hepatic TG levels, consistent with the improved capability of handling lipids in female mice. PNPLA3 (adiponutrin) is a patatin-like phospholipase [65,66]. Recently its function has been elucidated to be LPAAT activity [67], mediating one of the steps in the TG synthesis pathway but loss of *Pnpla3* in mice did not cause fatty liver [45,68,69]. *Pnpla3* RNA expression is regulated by nutritional factors, including feeding and fasting and intra-hepatic lipid status [44,70,71]. Consistent with higher female hepatic lipid levels, we show here that *Pnpla3* has female-dominant RXR $\alpha$  binding and RNA expression in liver, with enhanced responsiveness to RXR $\alpha$  activation, suggesting a major role for RXR $\alpha$  in mediating this gender lipid difference. *Pnpla3* gene expression is directly regulated by Srebp1c [44,45], and indirectly by the LXR/RXR $\alpha$  heterodimer acting on Srebp1c. Our ChIP-Seq and ChIP-QPCR data reveal also direct regulation by RXR $\alpha$  heterodimers. No gender or LG268 induced differences in RNA levels for Srebp1 were detected, despite a tendency for higher RXR $\alpha$  and Pol2 binding to female liver chromatin (Fig. S6). Numerous recent studies have established that the rs738409 C>G polymorphism encoding for the PNPLA3 I148M variation affects hepatic TG content and is more prevalent among NAFLD patients than healthy controls [39,40,72]. In addition, this polymorphism is associated with severity of both steatosis and fibrosis in NASH. *Lpin1*, which was also identified in our analysis to be female enriched in RXR $\alpha$  and Pol2 binding (Fig. 3), regulates a step in TG synthesis after *Pnpla3* and serves as coactivator for certain PPAR/RXR $\alpha$  regulated genes [73]. Our data show strong direct gender-differential binding of RXR $\alpha$  to *Lpin1* upstream regions. Upstream of TG synthesis, *Elovl6* is involved in elongation of saturated fatty acids (FA) from C12–16 to C18 [74,75], and its role in FA-synthesis is in conjugation with *Fasn* and *Scd1*. *Elovl6* transcription is indirectly activated by the RXR $\alpha$ /LXR $\alpha$  heterodimer via activation of Srebp1c [75,76], but our data indicate direct regulation by RXR $\alpha$  and partners via multiple binding sites as well, with an additional newly identified gender-specific regulatory role for RXR $\alpha$ . *Scd1* is transcriptionally regulated by multiple partners of RXR $\alpha$ , including LXR $\alpha$  and PPAR $\alpha$  [77], and multiple RXR $\alpha$  binding sites were identified in our study, but regulation was not previously known to be RXR $\alpha$ -mediated and gender differentially affected. RGS16 is involved in regulating energy homeostasis by coupling hepatic glucose production with rate of FAO [78], and *Rgs16*-Tg mice developed fatty liver during prolonged fast [79], and gender differential expression as well as regulation by RXR $\alpha$  has not been shown before. Overall, the roles found here for RXR $\alpha$ -containing heterodimers are readily extended to known therapeutic effects of ligands under study for





**Figure 4. Representatives of gender differential RXR $\alpha$  regulated genes.** A) Predominant RXR $\alpha$  and Pol2 binding for Cyp7b1 in male mouse liver. Left-hand panel: Top 2 tracks show Pol2 binding along the Cyp7b1 gene-span in male and female mouse liver. Bottom 2 tracks show RXR $\alpha$  peaks binding upstream of the TSS of Cyp7b1 TSS. Male enriched RXR $\alpha$  peaks are indicated by arrows P1, P2 and P3. Right-hand panel: Sexual dimorphic RNA levels of Cyp7b1 were confirmed by qPCR (n=5–6) (see also Fig. S2 and S3A–G). B) Predominant RXR $\alpha$  and Pol2 binding for Pnpla3 in female mouse liver. Left-hand panel: Top 2 tracks show Pol2 binding along the Pnpla3 gene-span in male and female mouse liver. Bottom 2 tracks show RXR $\alpha$  peaks binding upstream of the TSS of Pnpla3 TSS. Female enriched RXR $\alpha$  peaks are indicated by arrows P1, P2, P3 and P4. Right-hand panel: Sexual dimorphic RNA levels of Pnpla3 were confirmed by qPCR (n=5–6) (see also Fig. S2, S3A–G, S7 and S8). \*p<0.05  
doi:10.1371/journal.pone.0071538.g004

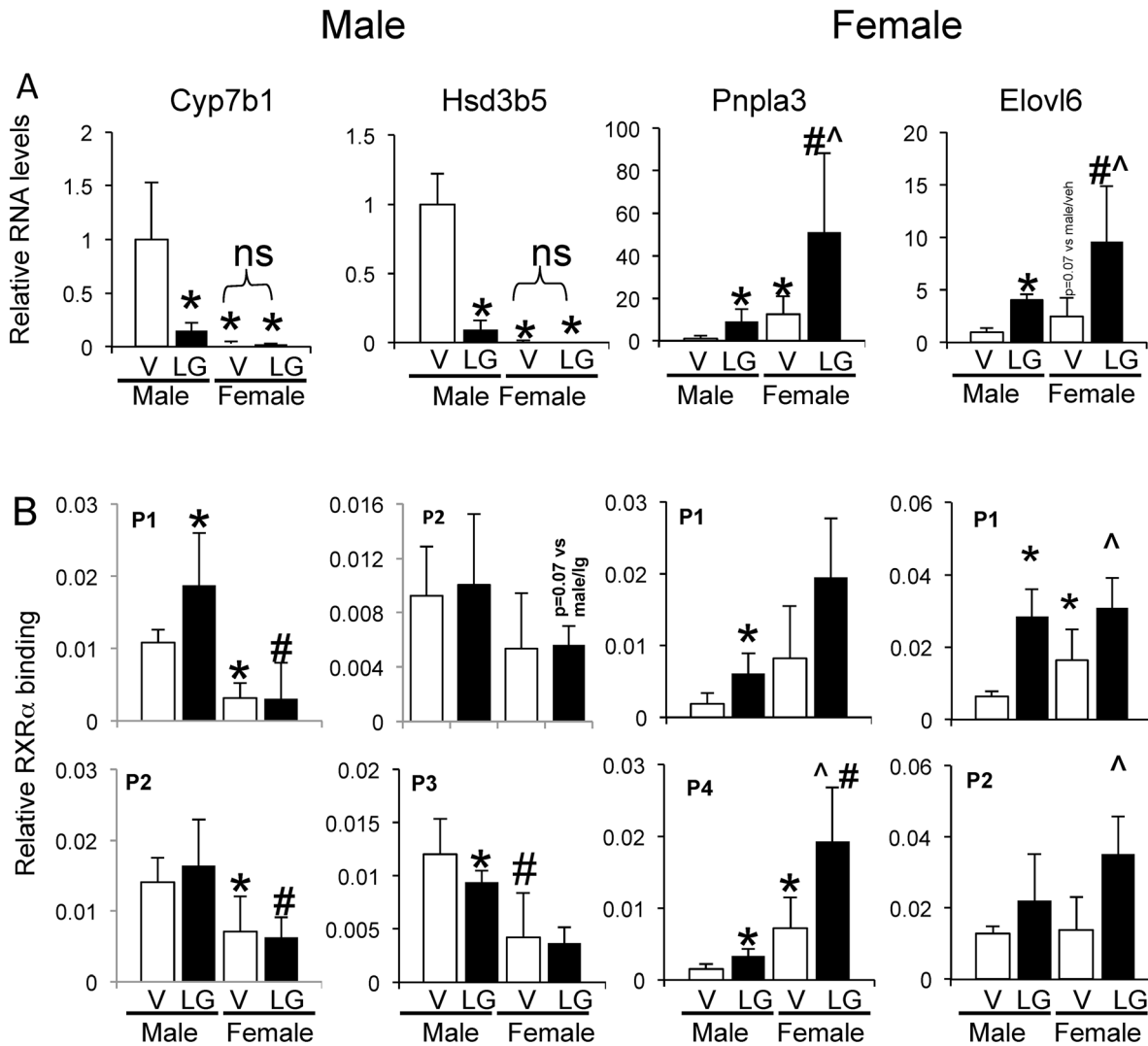


**Figure 5. Correlation of gender differential RXR $\alpha$ , Pol2 and RNA expression levels.** A) Correlation of RXR $\alpha$  and Pol2 binding with gene expression levels. B) Scatterplot representation of gender differential RXR $\alpha$  binding with gender differential gene expression on the left-hand side, and scatterplot representation of gender differential Pol2 binding with gender differential gene expression on the right-hand side. C) Genes with a gender specific positive correlation between RXR $\alpha$  binding Pol2 binding and changes in RNA levels (see also Fig. S4A–B and Table S6A–H in File S1). doi:10.1371/journal.pone.0071538.g005

these same pathways that target RXR $\alpha$ 's partners- PPARs, LXRs, and FXR. The consequences to RXR $\alpha$ -partner binding and function after heterodimer partner ligand treatment, or treatment with a rexinoid in combination with a partner ligand, is important and in need of future study.

Previous studies in human and rodent liver have identified sex-dependent differences in hepatic gene expression involved in diverse hepatic processes, including inflammatory responses, lipid metabolism, and steroid and drug metabolism [11,12,80,81], which were partially replicated in our study. In addition, by combining ChIP-Seq with RNA microarray analyses, this was expanded with findings of novel sex differences implicating a role for RXR $\alpha$ . Previous studies have also shown that gender differences in Growth Hormone (GH) pituitary secretion patterns play a major role in determining sexual dimorphic hepatic gene expression [15,17,47,82,83], however it does not explain all aspects. An essential factor mediating the hepatic gender-specific effects of GH is the downstream transcription factor Stat5b, and its

absence in male liver induced feminized hepatic gene expression [16]. Although Stat5b is a significant factor, other factors have been identified as well to play a role in sexual dimorphic hepatic gene expression, including transcription factors enriched in female liver Cux2, Trim24, Tox [18] and Bcl6 in male mouse liver [84]. In addition, some partners of RXR $\alpha$  were shown to have gender differential effects under certain conditions [48,85] [25]. Cai et al [86] showed a role for RXR $\alpha$  signaling in hepatic gender differences for expression levels of several CYP genes; changes which were dependent on or influenced by sex hormones. Gender-dimorphism was also shown for hepatic PPAR $\alpha$  [20,85], CAR [87,88], and HNF4 $\alpha$  [89,90]. Additional factors in hepatic gender differential expression are the sex hormones and their receptors, which are also a part of the NR family (Class I). Crosstalk has been shown between GH, NRs, sex hormones and their downstream signaling pathways [25], affecting hepatic sexual dimorphic expression of genes with roles in hepatic lipid metabolism. How all these differences in NR expression and function relate to our



**Figure 6. Gender differential responsiveness to RXR $\alpha$  activation in vivo.** Male and female mice were gavaged once daily for 5 days with the RXR $\alpha$  ligand LG268. A) Relative RNA levels in male and female mouse liver as determined by QPCR in response to RXR $\alpha$  activation by LG268 for selected male and female enriched genes. B) RXR $\alpha$  occupancy in response to RXR $\alpha$  activation on selected male and female enriched genes (see also Fig. S5 and S6). \* $p < 0.05$  vs male/veh;  $\wedge p < 0.05$  vs female/veh; # $p < 0.05$  vs female/LG268. doi:10.1371/journal.pone.0071538.g006

findings of differential chromatin occupancy of RXR $\alpha$  in male and female mouse livers will require similar sets of studies performed for the various NRs, especially ligand treatment of specific RXR $\alpha$  heterodimerization partners. Recently Zhang et al [26] identified all sexual dimorphic binding sites for Stat5b in male and female mouse liver. Comparing these data to our results for RXR $\alpha$  showed that ~28% of all genes (>12 k) in male mouse liver with RXR $\alpha$  binding sites also contained Stat5b binding sites, and >92% of the genes with Stat5b binding sites were identified to also have RXR $\alpha$  binding sites (Fig. S7, Table S6A–B in File S1). Additional comparisons show a high correlation for a major part of gender-specific RXR $\alpha$  and Stat5b binding sites (Fig. S7, Table S6A–B in File S1). As pointed out by others [26,29,91], this indicates that there is likely a considerable overlap and coregulation between TFs on the same genes, even with overlapping binding sites. For example, in our study Stat5b and RXR $\alpha$  binding at the same chromosomal location was found for Cyp7b1, Hsd3b5 (Fig. S7), but not for the female genes Pnpla3 and Sult3a1, indicating complex regulation of sex

differential gene expression and roles for cooperation and interaction of multiple transcription factors. Whether or not there is true cooperativity between Stat5b and RXR $\alpha$  heterodimers in NR ligand responsive gene expression in liver remains to be determined.

All together, these gender-specific binding patterns and differential ligand responsiveness may underlie some of the gender-specific “idiosyncratic” effects of drugs and the propensity to adverse events noted in humans. In conclusion these data indicate that RXR $\alpha$  is not only one of the most widely-distributed transcriptional regulators in mouse liver, but is engaged in determining sexually-dimorphic expression of several key sterol and lipid processing genes. These studies have implications for a deeper understanding of the roles for RXR $\alpha$  and heterodimer partner regulation of hepatic gene expression, with implications for the efficacy and adverse event profiles of NR ligands with potential gender-specific responses.

## Supporting Information

**Figure.S1 Chromosomal distribution of RXR $\alpha$  and Pol2 binding sites in male and female liver.** A) Chromosomal distribution of RXR $\alpha$  (left-hand panel) and Pol2 binding (right-hand panel) sites in male (top) and female liver (bottom). B) Number of RXR $\alpha$  (left-hand panel) and Pol2 (right-hand panel) binding sites per chromosome in male (top) and female liver (bottom) (see also Figure 1), showing significantly higher number of sites observed on chromosome 11 compared to expected and significantly lower on the X-chromosome.

(TIF)

**Figure.S2 RXR $\alpha$  and Pol2 binding sites for *Akr1d1* in male and female mouse liver.** Screenshot of *Akr1d1* as an example of a gene with peaks identified with both male and female enriched RXR $\alpha$  peaks (see also Figure 4).

(TIF)

**Figure.S3 RXR $\alpha$  and Pol2 binding sites for sexually dimorphic genes in male and female mouse liver.** A) *Elovl6*, B) *Scd1*, C) *Lpin1*, D) *Elovl3*, E) *Hsd3b5*, F) *Sult3a1* and G) *Rgl6*. Top panels of each sub-figure shows screenshots of sexually dimorphic RXR $\alpha$  peaks (indicated by arrows) and Pol2 binding. Lower panel of each sub-figure shows RNA levels for each gender as determined by realtime qPCR for with and without response to the synthetic RXR $\alpha$  ligand LG268 (see also Figure 4 and Figure 6).

(TIF)

**Figure S4 Sexually dimorphic RXR $\alpha$  and Pol2 binding sites correlated to gender differential changes in RNA levels.** A) Scatterplot correlation of gender differential RXR $\alpha$  binding sites with score >6 and gender differential changes in RNA levels for male and female mouse liver. B) Scatterplot correlation of gender differential Pol2 binding sites and gender differential changes in RNA levels for male and female mouse liver (see also Figure 4).

(TIF)

**Figure S5 Hepatic triglyceride levels in male and female mouse liver.** Triglyceride levels in male and female livers in response to ligand activated RXR $\alpha$  (see also Figure 6). Mice were gavaged for 5 days once daily with the synthetic RXR $\alpha$  ligand LG268 (30 mg/kg). \* $p$ <0.05 vs male/veh.

(TIF)

**Figure S6 RXR $\alpha$  binding, Pol2 binding and RNA levels of *Srebp1c* in male and female mouse liver.** Top panel shows screenshot of RXR $\alpha$  binding and Pol2 binding to *Srebp1* in male and female mouse liver. Lower panel shows RNA levels of *Srebp1c* in response to RXR $\alpha$  activation by the synthetic RXR $\alpha$  ligand LG268 in male and female mouse liver (see also Figure 6).

(TIF)

**Figure S7 Overlap of genes with binding sites for RXR $\alpha$  and Stat5b in a gender-specific manner.** A–D) Venn

diagrams showing overlap of number of sexual-dimorphic genes with binding sites identified for RXR $\alpha$  and for Stat5b. Stat5b data were obtained from (Zhang et al., 2012) (see also Figure 4). E–H) Screenshots of overlap of gender-specific binding sites for RXR $\alpha$  and Stat5b at the same chromosomal location for *Cyp7b1* (E) and *Hsd3b5*(F), but not for *Pnpla3* (G) and *Sult3a1* (H) (see also Figure 4)

(TIF)

**File S1.** This file contains Tables S1A through S6. Table S1A, Number of RXR and Pol2 reads and peak in male and female mouse liver: related to Figure 1 Table S1B, Male RXR $\alpha$  peak height >300; related to figure 1. Table S1C, Female RXR peak height >300; related to figure 1. Table 1D, RXR $\alpha$  peak distribution. Table S2A, ontology biological pathways; related to Figure 2. Table S2B, Kegg pathways; related to Figure 2. Table S3A, Male preferential RXR-binding sites: Male RXR peaks, RXR score >6; related to Table 1. Table S3B, Female preferential RXR-binding sites: Female RXR peaks, RXR score >6; related to Table 1. Table S3C, Male preferential RXR-binding sites: Male RXR only peaks, RXR score >6; related to Table 1. Table S3D, Female preferential RXR-binding sites: Female RXR peaks only, RXR score >6; related to Table 1. Table S3E, Female-Male overlap, RXR score >6; related to Table 1. Table S3F, Male preferential transcribed genes: Pol2 score >6;related to Table 1. Table S3G, Female preferential transcribed genes: Pol2 score >6;related to Table 1. Table S4A, Male preferential RXR-binding sites: Male RXR score >6 & Pol2 score>6; related to figure 5. Table S4B, Female preferential RXR-binding sites: Female RXR score >6 & Pol2 score>6; related to figure 5. Table S4C, ontology biological pathways; related to figure 5. Table S4D, Kegg pathways; related to figure 5. Table S5A, RXR vs RNA RXR>6-RNA F FC>1.5 ttest<0.1; related to Figure 6. Table S5B, RXR vs RNA RXR>6-RNA F FC>1.5 ttest<0.1; related to Figure 6. Table S5C, Pol2 vs RNA Pol2>6-RNA M FC>1.5 ttest<0.1; related to Figure 6. Table S5D, Pol2 vs RNA Pol2>6-RNA F FC>1.5 ttest<0.1; related to Figure 6. Table S5E, RXR-Pol2-RNA M; related to Figure 6. Table S5F, RXR-Pol2-RNA F; related to Figure 6. Table S6A, Comparison RXR $\alpha$  and Stat5b genes; Male- related to figure 4. Table S6B, Comparison RXR $\alpha$  and Stat5b genes; Female – related to figure 4.

(XLSX)

## Acknowledgments

We thank Vasantha Kolachala for advice on the Triglyceride assay.

## Author Contributions

Conceived and designed the experiments: AK FT SJK. Performed the experiments: AK FT JCF. Analyzed the data: AK DS FT HW WL SJK. Contributed reagents/materials/analysis tools: DS HW WL. Wrote the paper: AK DS FT SJK.

## References

- Shulman AI, Mangelsdorf DJ (2005) Retinoid x receptor heterodimers in the metabolic syndrome. *N Engl J Med* 353: 604–615.
- Perez E, Bourguet W, Gronemeyer H, de Lera AR (2012) Modulation of RXR function through ligand design. *Biochim Biophys Acta* 1821: 57–69.
- Bookout AL, Cummins CL, Mangelsdorf DJ, Pesola JM, Kramer MF (2006) High-throughput real-time quantitative reverse transcription PCR. *Curr Protoc Mol Biol* Chapter 15: Unit 15 18.
- Wan YJ, An D, Cai Y, Repa JJ, Hung-Po Chen T, et al. (2000) Hepatocyte-specific mutation establishes retinoid X receptor alpha as a heterodimeric integrator of multiple physiological processes in the liver. *Mol Cell Biol* 20: 4436–4444.
- Wan YJ, Cai Y, Lungo W, Fu P, Locker J, et al. (2000) Peroxisome proliferator-activated receptor alpha-mediated pathways are altered in hepatocyte-specific retinoid X receptor alpha-deficient mice. *J Biol Chem* 275: 28285–28290.
- Kosters A, Tian F, Wan YY, Karpen SJ (2012) Gene-specific alterations of hepatic gene expression by ligand activation or hepatocyte-selective inhibition of retinoid X receptor-alpha signalling during inflammation. *Liver Int* 32: 321–330.
- Roy AK, Chatterjee B (1983) Sexual dimorphism in the liver. *Annu Rev Physiol* 45: 37–50.
- Shapiro BH, Agrawal AK, Pampori NA (1995) Gender differences in drug metabolism regulated by growth hormone. *Int J Biochem Cell Biol* 27: 9–20.

9. Costet P, Legendre C, More J, Edgar A, Galtier P, et al. (1998) Peroxisome proliferator-activated receptor alpha-isoform deficiency leads to progressive dyslipidemia with sexually dimorphic obesity and steatosis. *J Biol Chem* 273: 29577–29585.
10. Spitzer JA (1999) Gender differences in some host defense mechanisms. *Lupus* 8: 380–383.
11. Clodfelter KH, Holloway MG, Hodor P, Park SH, Ray WJ, et al. (2006) Sex-dependent liver gene expression is extensive and largely dependent upon signal transducer and activator of transcription 5b (STAT5b): STAT5b-dependent activation of male genes and repression of female genes revealed by microarray analysis. *Mol Endocrinol* 20: 1333–1351.
12. Yang X, Schadt EE, Wang S, Wang H, Arnold AP, et al. (2006) Tissue-specific expression and regulation of sexually dimorphic genes in mice. *Genome Res* 16: 995–1004.
13. Wauthier V, Waxman DJ (2008) Sex-specific early growth hormone response genes in rat liver. *Mol Endocrinol* 22: 1962–1974.
14. Jansson JO, Eden S, Isaksson O (1985) Sexual dimorphism in the control of growth hormone secretion. *Endocr Rev* 6: 128–150.
15. Waxman DJ (2000) Growth hormone pulse-activated STAT5 signalling: a unique regulatory mechanism governing sexual dimorphism of liver gene expression. *Novartis Found Symp* 227: 61–74; discussion 75–81.
16. Holloway MG, Cui Y, Laz EV, Hosui A, Hennighausen L, et al. (2007) Loss of sexually dimorphic liver gene expression upon hepatocyte-specific deletion of Stat5a-Stat5b locus. *Endocrinology* 148: 1977–1986.
17. Waxman DJ, Holloway MG (2009) Sex differences in the expression of hepatic drug metabolizing enzymes. *Mol Pharmacol* 76: 215–228.
18. Laz EV, Holloway MG, Chen CS, Waxman DJ (2007) Characterization of three growth hormone-responsive transcription factors preferentially expressed in adult female liver. *Endocrinology* 148: 3327–3337.
19. Holloway MG, Laz EV, Waxman DJ (2006) Codependence of growth hormone-responsive, sexually dimorphic hepatic gene expression on signal transducer and activator of transcription 5b and hepatic nuclear factor 4alpha. *Mol Endocrinol* 20: 647–660.
20. Leuenberger N, Pradervand S, Wahli W (2009) Sumoylated PPARalpha mediates sex-specific gene repression and protects the liver from estrogen-induced toxicity in mice. *J Clin Invest* 119: 3138–3148.
21. Duma D, Collins JB, Chou JW, Cidlowski JA (2010) Sexually dimorphic actions of glucocorticoids provide a link to inflammatory diseases with gender differences in prevalence. *Sci Signal* 3: ra74.
22. Clodfelter KH, Miles GD, Wauthier V, Holloway MG, Zhang X, et al. (2007) Role of STAT5a in regulation of sex-specific gene expression in female but not male mouse liver revealed by microarray analysis. *Physiol Genomics* 31: 63–74.
23. Franconi F, Seghieri G, Canu S, Straface E, Campesi I, et al. (2008) Are the available experimental models of type 2 diabetes appropriate for a gender perspective? *Pharmacol Res* 57: 6–18.
24. Gandhi M, Awecka F, Greenblatt RM, Blaschke TF (2004) Sex differences in pharmacokinetics and pharmacodynamics. *Annu Rev Pharmacol Toxicol* 44: 499–523.
25. Rando G, Wahli W (2011) Sex differences in nuclear receptor-regulated liver metabolic pathways. *Biochim Biophys Acta* 1812: 964–973.
26. Zhang Y, Laz EV, Waxman DJ (2012) Dynamic, Sex-Differential STAT5 and BCL6 Binding to Sex-Biased, Growth Hormone-Regulated Genes in Adult Mouse Liver. *Mol Cell Biol* 32: 880–896.
27. Kosters A, White DD, Sun H, Thevananther S, Karpen SJ (2009) Redundant roles for cjun-N-terminal kinase 1 and 2 in interleukin-1beta-mediated reduction and modification of murine hepatic nuclear retinoid X receptor alpha. *J Hepatol* 51: 898–908.
28. Thomas AM, Hart SN, Kong B, Fang J, Zhong XB, et al. (2010) Genome-wide tissue-specific farnesoid X receptor binding in mouse liver and intestine. *Hepatology* 51: 1410–1419.
29. Boergesen M, Pedersen TA, Gross B, van Heeringen SJ, Hagenbeek D, et al. (2012) Genome-wide profiling of liver X receptor, retinoid X receptor, and peroxisome proliferator-activated receptor alpha in mouse liver reveals extensive sharing of binding sites. *Mol Cell Biol* 32: 852–867.
30. Zhang Y, Liu T, Meyer CA, Eeckhoutte J, Johnson DS, et al. (2008) Model-based analysis of ChIP-Seq (MACS). *Genome Biol* 9: R137.
31. The Farnham Laboratory Chromatin Immunoreception (ChIPs) Protocol for Tissues (2006 Revision). Available: <http://farnham.genomecenter.ucdavis.edu/protocols/tissues.html>. Accessed 2013 Jul 9.
32. Pirooznia M, Nagarajan V, Deng Y (2007) GeneVenn – A web application for comparing gene lists using Venn diagrams. *Bioinformatics* 1: 420–422.
33. Huang da W, Sherman BT, Tan Q, Collins JR, Alvord WG, et al. (2007) The DAVID Gene Functional Classification Tool: a novel biological module-centric algorithm to functionally analyze large gene lists. *Genome Biol* 8: R183.
34. Huang da W, Sherman BT, Lempicki RA (2009) Systematic and integrative analysis of large gene lists using DAVID bioinformatics resources. *Nat Protoc* 4: 44–57.
35. Stryjecki C, Roke K, Clarke S, Nielsen D, Badawi A, et al. (2012) Enzymatic activity and genetic variation in SCD1 modulate the relationship between fatty acids and inflammation. *Mol Genet Metab* 105: 421–427.
36. Gong J, Campos H, McGarvey S, Wu Z, Goldberg R, et al. (2011) Genetic variation in stearoyl-CoA desaturase 1 is associated with metabolic syndrome prevalence in Costa Rican adults. *J Nutr* 141: 2211–2218.
37. Bouchard-Mercier A, Paradis AM, Perusse L, Vohl MC (2012) Associations between Polymorphisms in Genes Involved in Fatty Acid Metabolism and Dietary Fat Intakes. *J Nutrigenet Nutrigenomics* 5: 1–12.
38. Dolley G, Boisclair ME, Lamarche B, Despres JP, Bouchard C, et al. (2011) Interactions between dietary fat intake and FASN genetic variation influence LDL peak particle diameter. *J Nutrigenet Nutrigenomics* 4: 137–145.
39. Kotronen A, Johansson LE, Johansson LM, Roos C, Westerbacka J, et al. (2009) A common variant in PNPLA3, which encodes adiponutrin, is associated with liver fat content in humans. *Diabetologia* 52: 1056–1060.
40. Romeo S, Kozlitina J, Xing C, Pertsemlidis A, Cox D, et al. (2008) Genetic variation in PNPLA3 confers susceptibility to nonalcoholic fatty liver disease. *Nat Genet* 40: 1461–1465.
41. Morcillo S, Martin-Nunez GM, Rojo-Martinez G, Almaraz MC, Garcia-Escobar E, et al. (2011) ELOVL6 genetic variation is related to insulin sensitivity: a new candidate gene in energy metabolism. *PLoS One* 6: e21198.
42. Valenti L, Motta BM, Alisi A, Sartorelli R, Buonaiuti G, et al. (2012) LPIN1 rs13412852 polymorphism in pediatric nonalcoholic fatty liver disease. *J Pediatr Gastroenterol Nutr* 54: 588–593.
43. Kang ES, Park SE, Han SJ, Kim SH, Nam CM, et al. (2008) LPIN1 genetic variation is associated with rosiglitazone response in type 2 diabetic patients. *Mol Genet Metab* 95: 96–100.
44. Huang Y, He S, Li JZ, Seo YK, Osborne TF, et al. (2010) A feed-forward loop amplifies nutritional regulation of PNPLA3. *Proc Natl Acad Sci U S A* 107: 7892–7897.
45. Qiao A, Liang J, Ke Y, Li C, Cui Y, et al. (2011) Mouse patatin-like phospholipase domain-containing 3 influences systemic lipid and glucose homeostasis. *Hepatology* 54: 509–521.
46. Sookoian S, Pirola CJ (2011) Meta-analysis of the influence of I148M variant of patatin-like phospholipase domain containing 3 gene (PNPLA3) on the susceptibility and histological severity of nonalcoholic fatty liver disease. *Hepatology* 53: 1883–1894.
47. Waxman DJ, O'Connor C (2006) Growth hormone regulation of sex-dependent liver gene expression. *Mol Endocrinol* 20: 2613–2629.
48. Holloway MG, Miles GD, Dombkowski AA, Waxman DJ (2008) Liver-specific hepatocyte nuclear factor-4alpha deficiency: greater impact on gene expression in male than in female mouse liver. *Mol Endocrinol* 22: 1274–1286.
49. Bookout AL, Jeong Y, Downes M, Yu RT, Evans RM, et al. (2006) Anatomical profiling of nuclear receptor expression reveals a hierarchical transcriptional network. *Cell* 126: 789–799.
50. Chalasani N, Younossi Z, Lavine JE, Diehl AM, Brunt EM, et al. (2012) The diagnosis and management of non-alcoholic fatty liver disease: practice Guideline by the American Association for the Study of Liver Diseases, American College of Gastroenterology, and the American Gastroenterological Association. *Hepatology* 55: 2005–2023.
51. Petta S, Craxi A (2010) Hepatocellular carcinoma and non-alcoholic fatty liver disease: from a clinical to a molecular association. *Curr Pharm Des* 16: 741–752.
52. Bugianesi E, Marchesini G, Gentilecore E, Cua IH, Vanni E, et al. (2006) Fibrosis in genotype 3 chronic hepatitis C and nonalcoholic fatty liver disease: Role of insulin resistance and hepatic steatosis. *Hepatology* 44: 1648–1655.
53. Marchesini G, Bugianesi E, Forlani G, Cerrelli F, Lenzi M, et al. (2003) Nonalcoholic fatty liver, steatohepatitis, and the metabolic syndrome. *Hepatology* 37: 917–923.
54. Bedogni G, Miglioli L, Masutti F, Tiribelli C, Marchesini G, et al. (2005) Prevalence of and risk factors for nonalcoholic fatty liver disease: the Dionysos nutrition and liver study. *Hepatology* 42: 44–52.
55. Argo CK, Northup PG, Al-Osaimi AM, Caldwell SH (2009) Systematic review of risk factors for fibrosis progression in non-alcoholic steatohepatitis. *J Hepatol* 51: 371–379.
56. Magkos F, Mittendorfer B (2009) Gender differences in lipid metabolism and the effect of obesity. *Obstet Gynecol Clin North Am* 36: 245–265, vii.
57. Fraser A, Longnecker MP, Lawlor DA (2007) Prevalence of elevated alanine aminotransferase among US adolescents and associated factors: NHANES 1999–2004. *Gastroenterology* 133: 1814–1820.
58. Schwimmer JB, Behling C, Newbury R, Deutsch R, Nievergelt C, et al. (2005) Histopathology of pediatric nonalcoholic fatty liver disease. *Hepatology* 42: 641–649.
59. Schwimmer JB, McGreal N, Deutsch R, Finegold MJ, Lavine JE (2005) Influence of gender, race, and ethnicity on suspected fatty liver in obese adolescents. *Pediatrics* 115: e561–565.
60. Nadeau KJ, Ehlers LB, Zeitler PS, Love-Osborne K (2009) Treatment of non-alcoholic fatty liver disease with metformin versus lifestyle intervention in insulin-resistant adolescents. *Pediatr Diabetes* 10: 5–13.
61. Sartorio A, Del Col A, Agosti F, Mazzilli G, Bellentani S, et al. (2007) Predictors of non-alcoholic fatty liver disease in obese children. *Eur J Clin Nutr* 61: 877–883.
62. Athshaves BP, Payne HR, McIntosh AL, Tichy SE, Russell D, et al. (2004) Sexually dimorphic metabolism of branched-chain lipids in C57BL/6j mice. *J Lipid Res* 45: 812–830.
63. Priego T, Sanchez J, Pico C, Palou A (2008) Sex-differential expression of metabolism-related genes in response to a high-fat diet. *Obesity (Silver Spring)* 16: 819–826.
64. Nadal-Casellas A, Proenza AM, Llado I, Gianotti M (2012) Sex-dependent differences in rat hepatic lipid accumulation and insulin sensitivity in response to diet-induced obesity. *Biochem Cell Biol*.

65. Baulande S, Lasnier F, Lucas M, Pairault J (2001) Adiponutrin, a transmembrane protein corresponding to a novel dietary- and obesity-linked mRNA specifically expressed in the adipose lineage. *J Biol Chem* 276: 33336–33344.
66. Liu YM, Moldes M, Bastard JP, Bruckert E, Viguier N, et al. (2004) Adiponutrin: A new gene regulated by energy balance in human adipose tissue. *J Clin Endocrinol Metab* 89: 2684–2689.
67. Kumari M, Schoiswohl G, Chitruju C, Paar M, Cornaciu I, et al. (2012) Adiponutrin functions as a nutritionally regulated lysophosphatidic acid acyltransferase. *Cell Metab* 15: 691–702.
68. Chen W, Chang B, Li L, Chan L (2010) Patatin-like phospholipase domain-containing 3/adiponutrin deficiency in mice is not associated with fatty liver disease. *Hepatology* 52: 1134–1142.
69. Basantani MK, Sitnick MT, Cai L, Brenner DS, Gardner NP, et al. (2011) Pnpla3/Adiponutrin deficiency in mice does not contribute to fatty liver disease or metabolic syndrome. *J Lipid Res* 52: 318–329.
70. Hoekstra M, Li Z, Kruijt JK, Van Eck M, Van Berkel TJ, et al. (2010) The expression level of non-alcoholic fatty liver disease-related gene PNPLA3 in hepatocytes is highly influenced by hepatic lipid status. *J Hepatol* 52: 244–251.
71. Johansson LE, Hoffstedt J, Parikh H, Carlsson E, Wabitsch M, et al. (2006) Variation in the adiponutrin gene influences its expression and associates with obesity. *Diabetes* 55: 826–833.
72. Kantartzis K, Peter A, Machicao F, Machann J, Wagner S, et al. (2009) Dissociation between fatty liver and insulin resistance in humans carrying a variant of the patatin-like phospholipase 3 gene. *Diabetes* 58: 2616–2623.
73. Donkor J, Zhang P, Wong S, O'Loughlin L, Dewald J, et al. (2009) A conserved serine residue is required for the phosphatidate phosphatase activity but not the transcriptional coactivator functions of lipin-1 and lipin-2. *J Biol Chem* 284: 29968–29978.
74. Moon YA, Shah NA, Mohapatra S, Warrington JA, Horton JD (2001) Identification of a mammalian long chain fatty acyl elongase regulated by sterol regulatory element-binding proteins. *J Biol Chem* 276: 45358–45366.
75. Matsuzaka T, Shimano H, Yahagi N, Kato T, Atsumi A, et al. (2007) Crucial role of a long-chain fatty acid elongase, Elovl6, in obesity-induced insulin resistance. *Nat Med* 13: 1193–1202.
76. Kumadaki S, Matsuzaka T, Kato T, Yahagi N, Yamamoto T, et al. (2008) Mouse Elovl-6 promoter is an SREBP target. *Biochem Biophys Res Commun* 368: 261–266.
77. Mauvoisin D, Mounier C (2011) Hormonal and nutritional regulation of SCD1 gene expression. *Biochimie* 93: 78–86.
78. Huang J, Pashkov V, Kurrasch DM, Yu K, Gold SJ, et al. (2006) Feeding and fasting controls liver expression of a regulator of G protein signaling (Rgs16) in periportal hepatocytes. *Comp Hepatol* 5: 8.
79. Pashkov V, Huang J, Parameswara VK, Kedzierski W, Kurrasch DM, et al. (2011) Regulator of G protein signaling (RGS16) inhibits hepatic fatty acid oxidation in a carbohydrate response element-binding protein (ChREBP)-dependent manner. *J Biol Chem* 286: 15116–15125.
80. Zhang Y, Klein K, Sugathan A, Nassery N, Dombkowski A, et al. (2011) Transcriptional profiling of human liver identifies sex-biased genes associated with polygenic dyslipidemia and coronary artery disease. *PLoS One* 6: e23506.
81. Wauthier V, Sugathan A, Meyer RD, Dombkowski AA, Waxman DJ (2010) Intrinsic sex differences in the early growth hormone responsiveness of sex-specific genes in mouse liver. *Mol Endocrinol* 24: 667–678.
82. Udy GB, Towers RP, Snell RG, Wilkins RJ, Park SH, et al. (1997) Requirement of STAT5b for sexual dimorphism of body growth rates and liver gene expression. *Proc Natl Acad Sci U S A* 94: 7239–7244.
83. Lichanska AM, Waters MJ (2008) How growth hormone controls growth, obesity and sexual dimorphism. *Trends Genet* 24: 41–47.
84. Meyer RD, Laz EV, Su T, Waxman DJ (2009) Male-specific hepatic Bel6: growth hormone-induced block of transcription elongation in females and binding to target genes inversely coordinated with STAT5. *Mol Endocrinol* 23: 1914–1926.
85. Morise A, Thomas C, Landrier JF, Besnard P, Hermier D (2009) Hepatic lipid metabolism response to dietary fatty acids is differently modulated by PPARalpha in male and female mice. *Eur J Nutr* 48: 465–473.
86. Cai Y, Dai T, Ao Y, Konishi T, Chuang KH, et al. (2003) Cytochrome P450 genes are differentially expressed in female and male hepatocyte retinoid X receptor alpha-deficient mice. *Endocrinology* 144: 2311–2318.
87. Hernandez JP, Mota LC, Huang W, Moore DD, Baldwin WS (2009) Sexually dimorphic regulation and induction of P450s by the constitutive androstane receptor (CAR). *Toxicology* 256: 53–64.
88. Ledda-Columbano GM, Pibiri M, Concas D, Molotzu F, Simbula G, et al. (2003) Sex difference in the proliferative response of mouse hepatocytes to treatment with the CAR ligand, TCPOBOP. *Carcinogenesis* 24: 1059–1065.
89. Wiwi CA, Gupte M, Waxman DJ (2004) Sexually dimorphic P450 gene expression in liver-specific hepatocyte nuclear factor 4alpha-deficient mice. *Mol Endocrinol* 18: 1975–1987.
90. Wiwi CA, Waxman DJ (2004) Role of hepatocyte nuclear factors in growth hormone-regulated, sexually dimorphic expression of liver cytochromes P450. *Growth Factors* 22: 79–88.
91. Siersbaek R, Nielsen R, Mandrup S (2012) Transcriptional networks and chromatin remodeling controlling adipogenesis. *Trends Endocrinol Metab* 23: 56–64.