

Excess of Methyl Donor in the Perinatal Period Reduces Postnatal Leptin Secretion in Rat and Interacts with the Effect of Protein Content in Diet

Fanny Giudicelli^{1,2}, Anne-Laure Brabant^{1,2}, Isabelle Grit^{1,2}, Patricia Parnet^{1,2}, Valérie Amarger^{1,2*}

1 INRA, UMR1280, Physiologie des Adaptations Nutritionnelles, Nantes, France, 2 Université de Nantes, UMR 1280, Physiologie des Adaptations Nutritionnelles, Nantes, France

Abstract

Methionine, folic acid, betaine and choline interact in the one-carbon metabolism which provides methyl groups for methylation reactions. An optimal intake of these nutrients during pregnancy is required for successful completion of fetal development and evidence is growing that they could be involved in metabolic long-term programming. However, the biological pathways involved in the action of these nutrients are still poorly known. This study investigated the interaction between methyl donors and protein content in maternal diet during the preconceptional, pregnancy and lactation periods and the consequences on the rat offspring in the short and long term. Methyl donor supplementation reduced leptin secretion in offspring, whereas insulin levels were mostly affected by protein restriction. The joint effect of protein restriction and methyl donor excess strongly impaired postnatal growth in both gender and long term weight gain in male offspring only, without affecting food intake. In addition, rats born from protein restricted and methyl donor supplemented dams gained less weight when fed a hypercaloric diet. Methylation of the leptin gene promoter in adipose tissue was increased in methyl donor supplemented groups but not affected by protein restriction only. These results suggest that maternal methyl donor supplementation may influence energy homeostasis in a gender-dependent manner, without affecting food intake. Moreover, we showed that macronutrients and micronutrients in maternal diet interact to influence the programming of the offspring.

Citation: Giudicelli F, Brabant A-L, Grit I, Parnet P, Amarger V (2013) Excess of Methyl Donor in the Perinatal Period Reduces Postnatal Leptin Secretion in Rat and Interacts with the Effect of Protein Content in Diet. PLoS ONE 8(7): e68268. doi:10.1371/journal.pone.0068268

Editor: Marcia B. Aguilá, State University of Rio de Janeiro, Biomedical Center, Institute of Biology, Brazil

Received: April 2, 2013; **Accepted:** May 28, 2013; **Published:** July 1, 2013

Copyright: © 2013 Giudicelli et al. This is an open-access article distributed under the terms of the Creative Commons Attribution License, which permits unrestricted use, distribution, and reproduction in any medium, provided the original author and source are credited.

Funding: FG was supported by a grant from INRA and Région Pays de la Loire. The funders had no role in study design, data collection and analysis, decision to publish, or preparation of the manuscript.

Competing interests: The authors have declared that no competing interests exist.

* E-mail: valerie.amarger@univ-nantes.fr

Introduction

It is now widely accepted that maternal nutrition in the periconceptional and perinatal periods, besides providing nutrients required for an optimal fetal growth and development may participate in the programming of metabolic disorders such as hypertension, impaired glucose tolerance, dyslipidemia and overweight [1–6].

Maternal protein restriction (PR) is a commonly used model of nutritional programming which impacts on fetal and postnatal growth and long term metabolism [7–10]. The precise mechanisms underlying these effects are still unclear, probably because of their large number and variety, from amino acid and nitrogen shortage to tissue structural alterations and impaired gene expression [11–15]. The effect of maternal PR on epigenetic regulation of several genes in various tissues was demonstrated [16–20] and epigenetic mechanisms are now recognized as major contributors to the influence of early

environment on gene expression in the long term [21]. Several nutrients were shown to be specifically important in the regulation of these mechanisms. For instance, the adverse effects of protein restriction on DNA methylation can be reversed by the addition of a supplement of folic acid [22–24] and maternal choline deficiency was associated with alterations of epigenetic regulation [25–27].

Besides these effects observed on experimental models, many clinical observations argue in favour of multiple benefits of folic acid supplementation on pregnancy outcomes [28–30], and supplementation with multiple micro nutrients and vitamins appear even more beneficial in developing countries [31]. An adequate maternal supply in folate and choline is required for an optimal neuro-development [32] and evidence is growing that these nutrients may exert a programming effect on both metabolic and cognitive outcomes [25,33]. Folic acid, choline and methionine participate in multiple metabolic pathways among which nucleotide and protein synthesis, cell membrane

biosynthesis and neurogenesis [34]. They are all involved in the one-carbon metabolic pathway which plays a major role in fetal development and programming. This pathway controls the synthesis and degradation of homocysteine and provides methyl groups for methylation reactions, in particular those associated with the epigenetic control of genome integrity and regulation. Many studies have investigated the effects of a deficiency in folic acid and related methyl donors [27,32,35] and it is widely admitted that deleterious effects are associated with a lack of these nutrients, although the underlying mechanisms are still unclear, probably because of the large panel of action of these nutrients.

In this work, we addressed the issue of the interaction between protein restriction and methyl donor supply in maternal diet and the consequences on fetal, postnatal and long term growth. We made the choice to supplement the maternal diet with an excess of several nutrients from the one-carbon metabolic pathway (methionine, choline, folic acid, Vit B12, zinc and betaine) in order to create a nutritional epigenetic challenge by influencing the availability of methyl groups [36,37]. We present here the consequences on leptin and insulin secretion, early growth and long term weight gain.

Materials and Methods

Ethics statement

Animal procedures and maintenance were conducted in accordance with the European Communities Council Directive 2007/526/CE and were approved by the Institut National de la Recherche Agronomique (INRA, Paris, France). The protocol was approved by the local ethics committee for animal experimentation (Comité Régional d'Ethique en Expérimentation Animale Pays de Loire under the license number CEEA.2010.02).

Animals and diets

Thirty two virgin female Sprague Dawley rats, 7 weeks old, weighing 200-220g, were purchased from Janvier (Le Genest Saint Isle, France), and housed individually on a 12h: 12h light: dark cycle, with free access to food and water. Upon arrival, they were randomized to receive one of the following diets (n=8 per group): (a) control (C) diet, (b) control diet supplemented with methyl donors (MD) (Csup), (c) protein restricted diet (R) or (d) protein restricted diet supplemented with MD (Rsup). Diets were purchased from Arie Blok, Woerden, the Netherlands (composition in Table S1). We decided to supplement maternal diet with various MD and cofactors (methionine, folic acid, choline, betaine, zinc, Vit B12) in order to increase methyl metabolism and subsequently influence the epigenetic regulation of epigenetic loci [36,37]. Females were fed these diets for 21 to 28 days before mating, and throughout gestation and lactation. After overnight housing with males, mating was confirmed by the presence of spermatozoa in vaginal smears. At birth, litters were culled to 8 pups per dam (4 males and 4 females). The weight, food intake of pregnant dams and pups weight were recorded daily. At birth (D0) or weaning (D21) (after overnight fasting for D21), subsets of pups were sacrificed by decapitation and tissues (adipose

tissue, liver) quickly dissected, snap frozen in liquid nitrogen and stored at -80°C. Plasma was obtained from whole blood collected on EDTA or heparinized tubes followed by centrifugation at 2500g for 15min at 4°C.

The offspring were weaned at 21 days of age onto the same standard growth diet until the age of 42 days (SAFE A03) and fed a standard maintenance (SAFE A04) diet until the age of 23 weeks. At 23 weeks, all animals were given free access to a hypercaloric high-fat high-sucrose western diet (4021.87, Arie Blok, Woerden, the Netherlands) for 4 weeks and sacrificed after an overnight fasting. Animal weight and food intake were recorded three times a week.

Plasma hormones and metabolites determination

Plasma cholesterol, glucose and triglyceride (TG) levels were determined using commercial kits (Cholesterol RTU, Glucose RTU, TG PAP 150) from bioMérieux (Marcy l'étoile, France). Leptin and insulin concentrations were determined with specific ELISA kits (Rat Leptin and Rat/Mouse insulin 96-well plate assay) from Millipore.

Real time quantitative RT-PCR

Total RNA was extracted from white adipose tissue using Qiazol (Qiagen Sciences, Maryland, USA) and quantified using the Nanovue spectrophotometer (GE Health Care, France). RNA integrity was confirmed by agarose gel electrophoresis and, for a random set of samples, using the Agilent BioAnalyser 2100. cDNA synthesis and Real Time PCR were performed as previously described [38]. Two reference genes were used as internal control, β -actin and Beta 2 Microglobulin (B2M). They were chosen and validated using the Genorm® Software [39]. Relative mRNA expression was calculated using the $2^{-\Delta\Delta Ct}$ method. Primer sequences are given in Table S2.

Pyrosequencing DNA methylation analysis

Genomic DNA was extracted from white adipose tissue using the Nucleospin® Tissue kit (Macherey Nagel, GmbH & Co, France). Two micrograms were submitted to bisulfite modification using the Methyl Detector bisulfite modification kit (Active Motif, Europe, Rixensart, Belgium) according to the manufacturer's instructions. Two μ l of the modified DNA was amplified by nested PCR with primers designed using MethPrimer [40], using the Pyromark PCR Kit (Qiagen Sciences, Maryland, USA) under the following conditions 95°C-10 min, 25 cycles (95°C-30s, 56°C-1min 30s, 72°C-1min) for the first PCR and 95°C-10 min, 30 cycles (95°C-30s, 56°C-30s, 72°C-30s) for the second PCR. Two μ l from the 1st PCR were used as template for the second PCR. Sample preparation and pyrosequencing were performed using the Pyromark Q96 instrument (Qiagen) following the manufacturer's recommendations. All samples (6 to 8 individuals/group) were analysed in duplicates in separate experiments and the obtained values were averaged. Primer sequences are given in Supplementary Table S2.

Table 1. Litter size, body weight and total food intake of dams during gestation and lactation.

	C n=6-5*	Csup n=4-3*	R n=6-5*	Rsup n=7-6*
Body weight G0 (g)	269.2±3.9 ^a	246.8±4.2 ^{ab}	266.4±4.0 ^a	239.3±5.0 ^b
Body weight G20 (g)	432.7±12.1 ^a	359.9±5.1 ^b	397.9±5.0 ^{ab}	356.7±7.0 ^b
Body weight D21 (g)	337.9±11.7 ^a	293.9±7.5 ^{ab}	278.0±3.9 ^{ab}	228.5±9.0 ^b
Cumulative food intake during gestation (kcal)	1512±65 ^{ac}	1113±21 ^b	1566±36 ^a	1255±51 ^{bc}
Cumulative food intake during lactation (kcal)	2732±111 ^a	2256±59 ^a	2498±59 ^a	1569±80 ^b
Litter size	14.3±0.8 ^a	10.7±0.9 ^b	13.1±0.5 ^{ab}	12.7±0.1 ^{ab}

* n number of dams during gestation-lactation

(G0 = first day of gestation, G20 = last day of gestation and D21 = last day of lactation) (Mean±SEM).

^{a b c} Groups that share the same superscript are not different from each other ($p < 0.05$, Kruskal-Wallis and Dunn's post hoc test). C: Control, Csup: Control MD supplemented, R: Protein Restricted, Rsup: Protein Restricted MD supplemented

Table 2. Offspring body weight at birth and weaning, and metabolic and hormonal parameters at weaning.

	C	Csup	R	Rsup
Birth weight (g)				
Males (n)	6.5±0.1 (29) ^a	6.3±0.05 (21) ^{ab,c}	6.9±0.06 (45) ^b	6.1±0.07 (40) ^c
Females (n)	6.2±0.07 (40) ^a	5.8±0.09 (22) ^b	6.5±0.06 (35) ^a	5.8±0.07 (49) ^b
Weight at weaning (g)				
Males (n)	46.8±1.1 (17) ^a	40.5±1.6 (12) ^{ab}	37.1±0.7 (20) ^b	26.2±0.6 (24) ^c
Females (n)	46.6±0.8 (14) ^a	39.8±1.7 (12) ^{ab}	36.5±0.8 (19) ^b	25.9±0.6 (24) ^c
Glucose (g/l) – Day 21				
Males (n)	0.97±0.01 (8) ^a	1.04±0.03 (6) ^{ab}	0.96±0.02 (8) ^{ab}	0.84±0.02 (8) ^b
Females (n)	1.04±0.02 (8) ^a	1.23±0.03 (6) ^b	1.17±0.06 (8) ^b	1.02±0.02 (8) ^{ab}
Triglycerides (g/l) – Day 21				
Males (n)	1.97±0.20 (8) ^a	1.26±0.16 (6) ^b	0.56±0.04 (8) ^c	0.50±0.04 (8) ^c
Females (n)	2.08±0.25 (8) ^a	1.16±0.22 (6) ^b	0.65±0.07 (8) ^c	0.51±0.04 (8) ^c
Cholesterol (g/l) – Day 21				
Males (n)	2.15±0.18 (8) ^a	1.80±0.13 (6) ^{ab}	1.83±0.12 (8) ^{ab}	1.77±0.07 (8) ^b
Females (n)	2.04±0.13 (8) ^a	1.66±0.11 (6) ^a	1.69±0.07 (8) ^a	1.89±0.10 (8) ^a
Insulin (ng/ml) – Day 21				
Males (n)	0.63±0.04 (8) ^a	0.65±0.09 (6) ^a	0.34±0.04 (8) ^b	0.18±0.03 (8) ^b
Females (n)	0.69±0.12 (8) ^a	0.70±0.07 (6) ^a	0.44±0.05 (8) ^b	0.24±0.02 (8) ^b
Leptin (ng/ml) – Day 21				
Males (n)	3.26±0.33 (8) ^a	1.85±0.24 (6) ^b	4.16±0.49 (8) ^a	1.23±0.17 (8) ^b
Females (n)	4.01±0.53 (8) ^a	2.43±0.19 (6) ^b	4.23±0.65 (8) ^a	0.81±0.16 (8) ^c
Dams (n)	3.58±0.73 (5) ^a	3.05±0.59 (3) ^a	2.53±0.39 (5) ^{ab}	1.20±0.00 (6) ^b

(Mean±SEM). ^{a b c} Groups that share the same superscript are not significantly different from each other ($p < 0.05$, Kruskal-Wallis and Dunn's post hoc test, independently for each gender).

C: Control, Csup: Control MD supplemented, R: Protein Restricted, Rsup: Protein Restricted MD supplemented

Statistical analyses

Data were analysed using GraphPad Prism® 5 (GraphPad software Inc., La Jolla, CA, USA). Comparison of data within the four experimental groups was performed using the

Kruskal-Wallis test followed by Dunn's multiple comparison test because variances differed between groups and/or $n < 10$ /group. Mann Whitney test was used when only two groups were compared. Interaction between MD and protein content in maternal diet or between gender and diet was tested using two-way ANOVA, followed by Bonferroni's post-test, which adjusts for multiple testing. $P < 0.05$ was considered significant. Correlations were tested using the non-parametric Spearman's test.

Results

Maternal characteristics

Whereas all dams had similar body weight at the beginning of the experiment, dams fed the MD supplemented diets weighed less at the end of the habituation period, particularly the Rsup group (Table 1). Mating was confirmed for 6, 7, 6 and 7 females for the C, Csup, R and Rsup groups, respectively and all females were indeed pregnant except for 3 females in the Csup group. Total food intake during gestation was reduced by 20 to 25% in the Rsup and Csup compared to the R and C dams, respectively, and body weight at the end of gestation was correlated to food intake ($r = 0.75$, $p < 0.0001$). The number of pups per litter varied from 8 to 17, and litters from the Csup group were significantly smaller than litters from the control group (Table 1).

Food intake during lactation remained lower for Rsup dams, but increased throughout lactation for the Csup dams, leading to a cumulative intake similar to controls (Table 1).

Impact on birth weight and postnatal growth

Surprisingly, pups born from dams fed the PR diet (R) were slightly heavier at birth than pups from control mothers (males +6%, $p < 0.05$, females +5%, ns) (Table 2). MD supplementation was associated with a lower birth weight, mostly in the Rsup group compared to the R group (males -12% and females -11%, $p < 0.0001$), and in the Csup group compared to the C group for the females (-6%, $p < 0.05$) (Table 2). Data analysis using two-way ANOVA revealed an interaction between MD and protein content ($p = 0.0002$ for males and $p = 0.04$ for females) on birth weight.

Postnatal growth was dramatically impaired in the protein restricted groups (R and Rsup) compared to controls with Rsup and R pups weighing about 45% and 21% less than controls at weaning, respectively (Table 2).

Plasma metabolic and hormonal parameters at D21

Plasma glucose was reduced by about 25% in Rsup males and increased in Csup and R females (+18 and 12% respectively) compared to controls. Cholesterol was reduced in Rsup males (-18%) as well, whereas there was no difference between groups for females. Plasma triglyceride levels were markedly reduced in the three experimental groups compared to controls, particularly in the R and Rsup groups whose concentrations were about 4 times less (Table 2).

Pups from the protein restricted groups (R and Rsup) had lower insulin levels, (Table 2). This effect was emphasized by

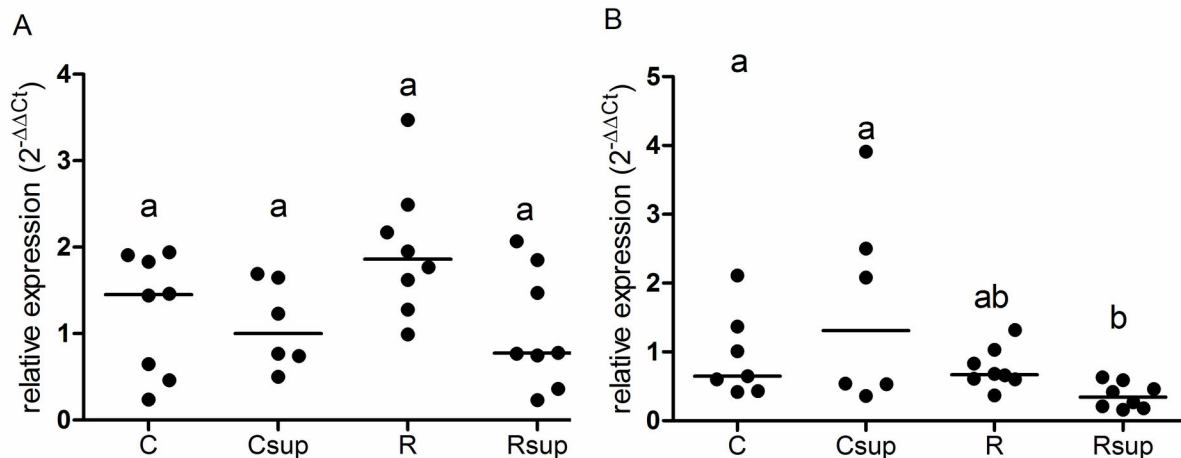


Figure 1. Relative expression of the Leptin gene in adipose tissue at D21. Leptin gene expression was measured on white adipose tissue from males (A) and females (B) sacrificed at D21 after overnight fasting. Individual data are presented using a scatter plot with median. ^{a,b}Groups that share the same superscript are not significantly different from each other ($p < 0.05$, Kruskal-Wallis and Dunn's post hoc test). C: Control, Csup: Control MD supplemented, R: Protein Restricted, Rsup: Protein Restricted MD supplemented.

doi: 10.1371/journal.pone.0068268.g001

the MD supplementation (Rsup group, -70% compared to controls), whereas MD supplementation in the absence of protein restriction had no effect (Csup).

Plasma leptin at D21 was strongly reduced (-40 to -70%) in the MD supplemented groups (Csup and Rsup) in both males and females as compared to controls. A strong cumulative effect of both protein restriction and MD supplementation (Rsup group) was observed in females which showed leptin levels 5 times lower than controls (Table 2). In order to test if pups plasma leptin was influenced by maternal leptin through milk intake, we measured the level of plasma leptin in lactating dams just before weaning. There was no significant difference between C, Csup and R dams but a 3 times lower level in Rsup dams compared to controls (Table 2). Dams plasma leptin was well correlated with body weight ($r = 0.8$, $p < 0.0001$) in all groups.

Leptin gene expression and promoter DNA methylation

Because of the large variations observed in offspring plasma leptin, we tested whether this might be linked to changes in the expression level of the *Lep* gene in adipose tissue. Surprisingly, we did not show any evidence of significant changes that may explain the observed variations in plasma leptin although Rsup males had a slightly lower expression level than controls ($p < 0.05$ Dunn's test) (Figure 1).

Since we observed a strong effect of maternal MD supplementation on offspring leptin levels, we analysed the DNA methylation of the leptin gene promoter. The region spanning 282 bp upstream the transcription start site (Figure 2) contains 16 CpG sites which were analysed by pyrosequencing on genomic DNA extracted from white adipose tissue of 21 days old rats. The methylation level over this region harbored a great heterogeneity (from 0 to about 60% from one CpG site to

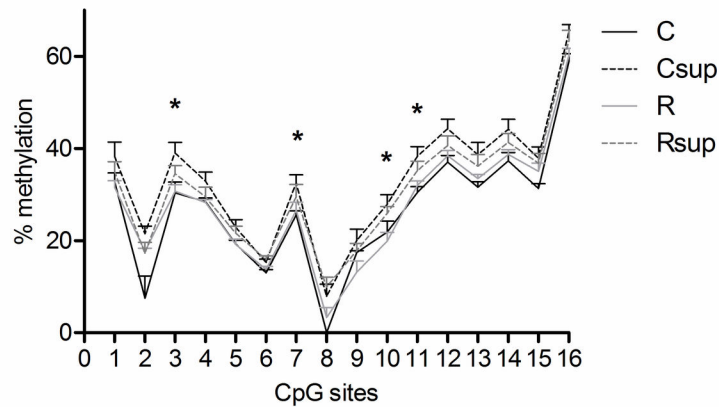
another) (Figure 3A). Methylation levels were overall higher in the two methyl supplemented groups (Csup and Rsup) compared to the unsupplemented groups (C and R) and the control group displayed the lowest methylation level at all CpG sites. Significant differences over the four groups (Kruskal Wallis test, $p < 0.05$) were observed for CpG sites 3, 7, 10 and 11, and pairwise comparison between C and Csup groups was significant for CpG sites 3, 4, 6, 7, 10, 11, 12, 13, 14 and 16 (Mann Whitney $p < 0.05$). Only CpG 10 was significantly less methylated in Rsup than controls ($p = 0.01$). Inter-individual variability was observed for most CpG sites, as evidenced on the scatter plot graphs (Figure 3B). CpG sites 8 and 2 were completely unmethylated for all (CpG 8) or 2 out of 6 (CpG2) individuals from the control group whereas they had methylation level ranging from 0 to 20% (CpG8) or 10 to 30% (CpG2) in the other groups (data not shown). The CpG site 16 is situated in a C/EBP transcription factor binding site, which is highly conserved between species [41] and which methylation status was shown to strongly influence the expression level of the gene [42]. This CpG was highly methylated in our samples (58% on average in the C group to 65% in the Csup group), compare to the other CpG sites in the region.

Long term growth, food intake and metabolic parameters

Differences in body weight that were observed at weaning disappeared for females during the month following weaning and this situation lasted until week 22 (Table 2).

Control males kept a higher body weight that the 3 experimental groups throughout the whole experiment, but the difference was significant only with Rsup males which were on average 17% lighter than controls from weaning until week 22

A



B

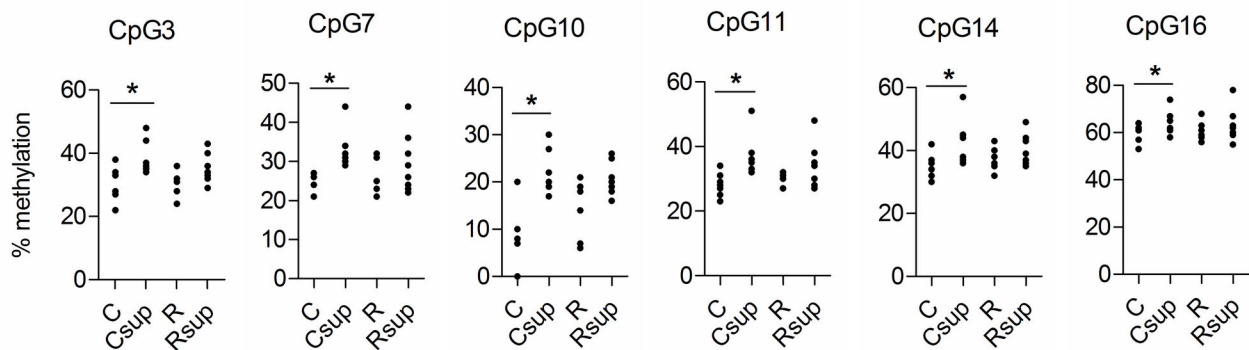


Figure 3. Leptin gene promoter methylation in male offspring at D21. (A) Methylation level at CpG sites 1 to 16 in each group of animals was measured by pyrosequencing on genomic DNA extracted from white adipose tissue. Data are presented as mean \pm SEM for 6 to 8 samples per group (* $p < 0.05$ Kruskal Wallis test). (B) Methylation levels at individual CpG sites (* $p < 0.05$ Mann Whitney test between C and Csup groups). C: Control, Csup: Control MD supplemented, R: Protein Restricted, Rsup: Protein Restricted MD supplemented.

doi: 10.1371/journal.pone.0068268.g003

Table 3. Body weight at 23 and 27 weeks.

	C	Csup	R	Rsup
Weight at 23 weeks (g)				
Males (n)	646 \pm 27 (8) ^a	565 \pm 26 (4) ^{ab}	578 \pm 19 (8) ^{ab}	530 \pm 17 (8) ^b
Females (n)	309 \pm 10 (8) ^a	293 \pm 5 (4) ^a	295 \pm 9 (8) ^a	290 \pm 9 (8) ^a
Weight at 27 weeks (g)				
Males (n)	704 \pm 22 (4) ^a	623 \pm 23 (4) ^{ab}	658 \pm 26 (6) ^{ab}	551 \pm 17 (6) ^b
Females (n)	362 \pm 12 (8) ^a	323 \pm 6 (4) ^a	324 \pm 14 (8) ^a	318 \pm 13 (8) ^a

(Mean \pm SEM). ^{a b} Groups that share the same superscript are not significantly different from each other ($p < 0.05$, Kruskal-Wallis and Dunn's post hoc test). C: Control, Csup: Control MD supplemented, R: Protein Restricted, Rsup: Protein Restricted MD supplemented.

In this experiment, we did not measure leptin levels at different stages of pup development, therefore we do not know if the leptin surge occurred or not and when. However, in their

model of maternal caloric restriction, Delahaye et al. [11] have shown that a reduced leptin level at D21 is reminiscent of an impaired leptin secretion throughout the suckling period whereas the occurrence of a premature or delayed leptin surge is no longer visible at weaning [38]. We can therefore suggest that the animals from the MD supplemented groups had lower leptin levels from birth until weaning and even persisted low at adulthood for the Rsup.

The way methyl donors content in maternal diet influenced offspring plasma leptin at weaning remains to be determined. Each of the nutrients involved in one-carbon metabolism participates in other biological pathways and we cannot exclude that the observed effects may be due to one of these nutrients rather than the combination of all of them. An excess of zinc, for instance, may be responsible for a reduced maternal nonembryonic weight gain [45]. However, all these nutrients have been shown to be associated with the epigenetic machinery [25–27,46] and epigenetic mechanisms are now admitted to play a major role in the process of nutritional

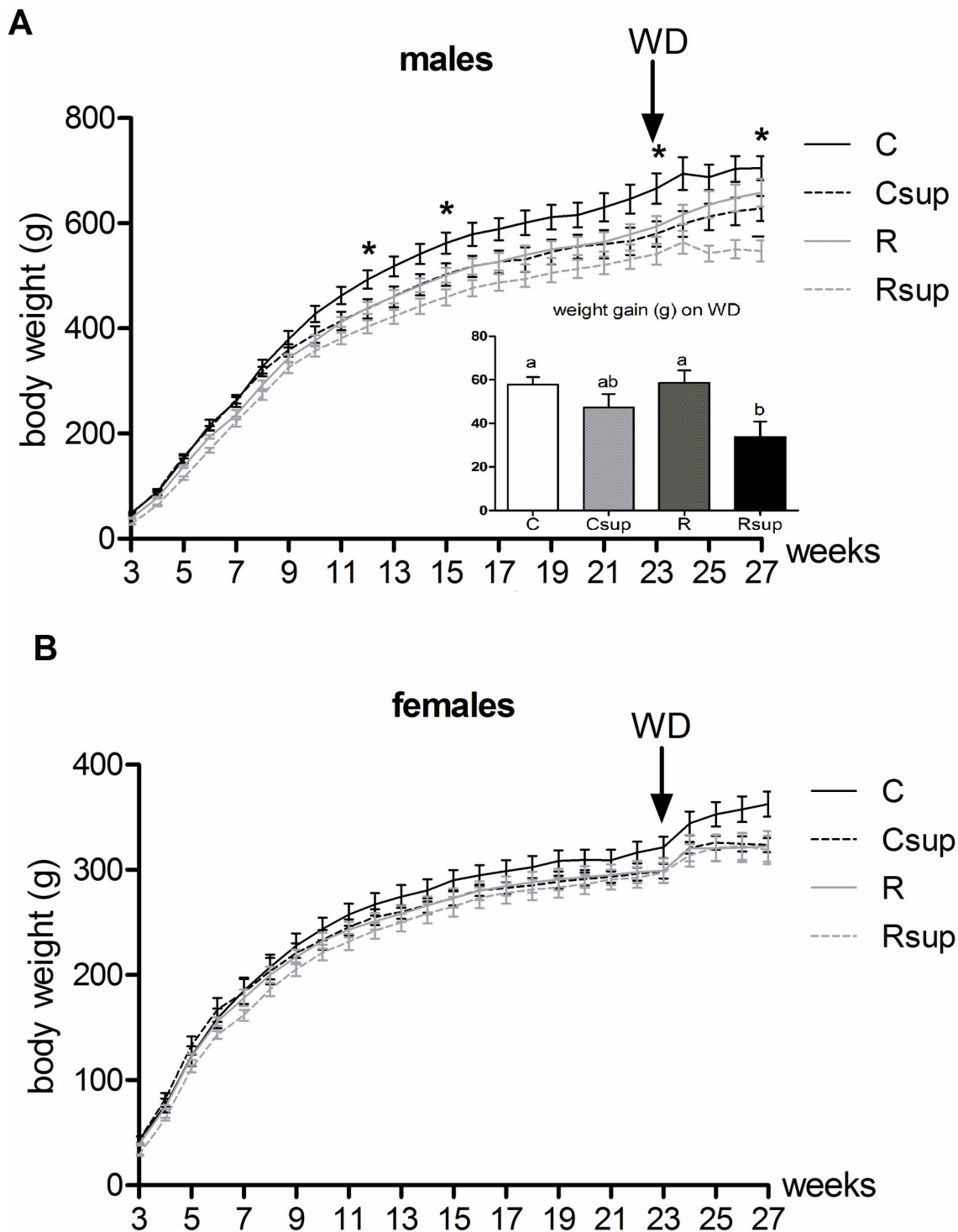


Figure 4. Offspring growth from week 3 to 27. Animals were fed chow diet until week 23 and western diet (WD) from week 23 to 27. Body weight for males (A) and females (B) were recorded three times a week. Values are expressed as mean \pm SEM (* $p < 0.05$ Kruskal Wallis test). Male weight gain on WD corresponds to weight difference between week 23 and week 27 (mean \pm SEM). ^{a,b}Groups that share the same superscript are not significantly different from each other ($p < 0.05$, Kruskal-Wallis and Dunn's post hoc test). C: Control, Csup: Control MD supplemented, R: Protein Restricted, Rsup: Protein Restricted MD supplemented.

doi: 10.1371/journal.pone.0068268.g004

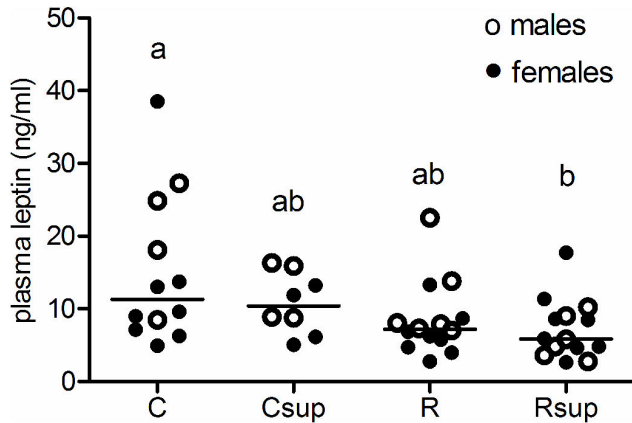


Figure 5. Plasma leptin in 27 week old rats. Plasma leptin was measured on blood sampled on animals sacrificed after overnight fasting (n=4 to 6 per gender per group). ^{a,b}Groups that share the same superscript are not significantly different from each other ($p < 0.05$, Kruskal-Wallis and Dunn's post hoc test). C: Control, Csup: Control MD supplemented, R: Protein Restricted, Rsup: Protein Restricted MD supplemented.

doi: 10.1371/journal.pone.0068268.g005

programming [21]. Supplementation with an excess of methyl donors around conception and during gestation is known to induce hypermethylation at epi-labile *loci* [36,37,47] and may be involved in the protection against obesity [48]. We observed a higher methylation level of the leptin promoter gene in the adipose tissue of offspring from the MD supplemented dams. Are these rather moderate effects responsible for the large variations in plasma leptin is questionable. Although we found that the methylation status of the leptin gene promoter was influenced by maternal diet, we did not find evidence of large variations in the expression of the gene that could explain the variation in plasma concentration. However, plasma leptin at a given time point may not perfectly correlate with the expression level of the gene but rather reflect the amount of mature adipocytes. Indeed, the promoter methylation may also reflect a lower differentiation level of the adipose tissue. The leptin gene is highly methylated in undifferentiated pre-adipocytes and undergoes demethylation during the differentiation process [42] allowing the activation of its expression by several transcription factors. The C/EBP α transcription factor plays a major role in the activation of adipocyte-specific genes, among which the leptin gene. It binds to a specific site at position -61 in the leptin gene promoter and its binding is impaired by methylation of the CpG embedded in the binding site. Surprisingly, this CpG site is the one displaying the highest level of methylation (around 60%) in our experiment (CpG n° 16), and other studies [18,49].

Further work is needed to establish if MD supplementation influenced the number of differentiated adipocytes. Since insulin is known to induce pre-adipocyte differentiation [50], low insulin level in the Rsup animals may have accentuated this effect. This would fit well with a probable lower fat mass at that period and is in agreement with the observed lower weight gain

at adulthood and lower plasma leptin at 27 weeks of age. Moreover, the fact that Rsup animals had a similar food intake compared to the other groups but display a 20% lower body weight than control rats strongly suggests that they have a different metabolic regulation or energy expenditure. It is now admitted that appropriate leptin levels during neonatal life are required for normal energy balance regulation and hypothalamic development and function [51], and leptin provided through breast milk was shown to protect against several outcomes related to metabolic syndrome [52]. Surprisingly, in our study, pups from the MD supplemented dams combine lower plasma leptin levels at weaning and a reduced diet-induced weight gain at adulthood. Interestingly, the phenotype we observed here on the male offspring is somehow, but to a less extent, similar to the phenotype of the Bhmt (Betaine-homocysteine methyl transferase) knock-out mice model which is characterised by an increased energy expenditure, reduced weight gain and reduced adiposity despite a normal food intake, associated with an hyperhomocysteinemia [53]. In that model, the homocysteine pathway is impaired in liver, where the Bhmt gene is normally expressed, but the whole energy metabolism is disrupted, which shows evidence of the implication of the one-carbon metabolic pathway in the control of energy homeostasis.

In summary, we show here that maternal supplementation with an excess of methyl donors strongly reduced early leptin secretion. When combined with protein restriction which impaired insulin secretion, this supplementation affects long term weight gain in males independently of food intake, which suggest an impact on energy homeostasis and expenditure regulation.

The data presented here are not sufficient to conclude whether maternal MD supplementation is beneficial or deleterious to the offspring submitted to an early carence in protein. However, the observed tendency to a protection against the obesogenic effect of a hypercaloric diet is a very intriguing result. This interesting observation needs to be completed by mechanistic investigation particularly on adipose tissue development and leptin action. Moreover, we observed a maternal hyperhomocysteinemia induced by the MD supplementation (data not shown) that could be of importance since it may impact on several pregnancy outcomes [30]. In regard to these new observations, and although the amount of methyl donors used in our experiment was higher than what is provided through multivitamins dietary supplements, it raises the question of the potential interaction between methyl donors and protein content in maternal diet when prescribing these supplements to pregnant women. Further work is needed to deepen our understanding of micro- and macro-nutriments interactions during such critical periods as pre-conception, pregnancy and lactation.

Supporting Information

Table S1. Composition of the diets. (DOCX)

Table S2. Sequence of primers used for Real Time qPCR, Nested Bisulfite PCR and pyrosequencing. (DOCX)

Acknowledgements

The authors thank Catherine Gratas and Christian Renaud, Biochemistry laboratory, CHU Nantes, France, for homocysteine quantification, Thomas Lavaux and Alain Morel, Centre Paul Papin, CHU Angers, Angers, France for providing access to the pyrosequencing equipment and Guillaume Poupeau, Isabelle Gicquel and Franck Doulay for technical assistance.

References

- Hales CN, Barker DJ (2001) The thrifty phenotype hypothesis. *Br Med Bull* 60: 5-20. doi:10.1093/bmb/60.1.5. PubMed: 11809615.
- Ozanne SE, Hales CN (2002) Early programming of glucose-insulin metabolism. *Trends Endocrinol Metab* 13: 368-373. doi:10.1016/S1043-2760(02)00666-5. PubMed: 12367817.
- Symonds ME, Sebert SP, Hyatt MA, Budge H (2009) Nutritional programming of the metabolic syndrome. *Nat Rev Endocrinol* 5: 604-610. doi:10.1038/nrendo.2009.195. PubMed: 19786987.
- Eriksson JG, Forsén T, Tuomilehto J, Osmond C, Barker DJ (2001) Early growth and coronary heart disease in later life: longitudinal study. *BMJ* 322: 949-953. doi:10.1136/bmj.322.7292.949. PubMed: 11312225.
- Gluckman PD, Hanson MA (2004) The developmental origins of the metabolic syndrome. *Trends Endocrinol Metab* 15: 183-187. doi:10.1016/j.tem.2004.03.002. PubMed: 15109618.
- Barker DJ (2004) The developmental origins of adult disease. *J Am Coll Nutr* 23: 588S-595S. PubMed: 15640511.
- Orozco-Solis R, Matos RJ, Guzmán-Quevedo O, Lopes de Souza S, Bihoué A et al. (2010) Nutritional programming in the rat is linked to long-lasting changes in nutrient sensing and energy homeostasis in the hypothalamus. *PLOS ONE* 5: e13537. doi:10.1371/journal.pone.0013537. PubMed: 20975839.
- Qasem RJ, Cherala G, D'Mello AP (2010) Maternal protein restriction during pregnancy and lactation in rats imprints long-term reduction in hepatic lipid content selectively in the male offspring. *Nutr Res* 30: 410-417. doi:10.1016/j.nutres.2010.05.008. PubMed: 20650349.
- Martin-Gronert MS, Tarry-Adkins JL, Cripps RL, Chen JH, Ozanne SE (2008) Maternal protein restriction leads to early life alterations in the expression of key molecules involved in the aging process in rat offspring. *Am J Physiol Regul Integr Comp Physiol* 294: R494-R500. PubMed: 18094069.
- Langley-Evans SC, Bellinger L, McMullen S (2005) Animal models of programming: early life influences on appetite and feeding behaviour. *Matern Child Nutr* 1: 142-148. doi:10.1111/j.1740-8709.2005.00015.x. PubMed: 16881893.
- Delahaye F, Breton C, Risold PY, Enache M, Dutriez-Casteloot I et al. (2008) Maternal perinatal undernutrition drastically reduces postnatal leptin surge and affects the development of arcuate nucleus proopiomelanocortin neurons in neonatal male rat pups. *Endocrinology* 149: 470-475. PubMed: 18006626.
- Warner MJ, Ozanne SE (2010) Mechanisms involved in the developmental programming of adulthood disease. *Biochem J* 427: 333-347. doi:10.1042/BJ20091861. PubMed: 20388123.
- Vaiman D, Gascoïn-Lachambre G, Boubred F, Mondon F, Feuerstein JM et al. (2011) The intensity of IUGR-induced transcriptome deregulations is inversely correlated with the onset of organ function in a rat model. *PLOS ONE* 6: e21222. doi:10.1371/journal.pone.0021222. PubMed: 21731679.
- Coupé B, Delamaire E, Hoebler C, Grit I, Even P et al. (2011) Hypothalamus integrity and appetite regulation in low birth weight rats reared artificially on a high-protein milk formula. *J Nutr Biochem* 22: 956-963. doi:10.1016/j.jnutbio.2010.08.007. PubMed: 21167701.
- Bol VV, Delattre AI, Reusens B, Raes M, Remacle C (2009) Forced catch-up growth after fetal protein restriction alters the adipose tissue gene expression program leading to obesity in adult mice. *Am J Physiol Regul Integr Comp Physiol* 297: R291-R299. doi:10.1152/ajpregu.90497.2008. PubMed: 19458276.
- Coupé B, Amarger V, Grit I, Benani A, Parnet P (2010) Nutritional programming affects hypothalamic organization and early response to leptin. *Endocrinology* 151: 702-713. doi:10.1210/en.2009-0893. PubMed: 20016030.
- Burdge GC, Slater-Jefferies J, Torrens C, Phillips ES, Hanson MA et al. (2007) Dietary protein restriction of pregnant rats in the F0 generation

Author Contributions

Conceived and designed the experiments: VA PP. Performed the experiments: FG ALB IG VA. Analyzed the data: FG ALB IG PP VA. Contributed reagents/materials/analysis tools: FG ALB IG PP VA. Wrote the manuscript: PP VA.

- induces altered methylation of hepatic gene promoters in the adult male offspring in the F1 and F2 generations. *Br J Nutr* 97: 435-439. doi:10.1017/S0007114507352392. PubMed: 17313703.
- Jousse C, Parry L, Lambert-Langlais S, Maurin AC, Averous J et al. (2011) Perinatal undernutrition affects the methylation and expression of the leptin gene in adults: implication for the understanding of metabolic syndrome. *FASEB J* 25: 3271-3278. doi:10.1096/fj.11-181792. PubMed: 21670064.
- van Straten EM, Bloks VW, Huijckman NC, Baller JF, van Meer H et al. (2010) The liver X-receptor gene promoter is hypermethylated in a mouse model of prenatal protein restriction. *Am J Physiol Regul Integr Comp Physiol* 298: R275-R282. doi:10.1152/ajpregu.00413.2009. PubMed: 19889862.
- Lillicrop KA, Phillips ES, Torrens C, Hanson MA, Jackson AA et al. (2008) Feeding pregnant rats a protein-restricted diet persistently alters the methylation of specific cytosines in the hepatic PPAR alpha promoter of the offspring. *Br J Nutr* 100: 278-282. PubMed: 18186951.
- Gabory A, Attig L, Junien C (2011) Developmental programming and epigenetics. *Am J Clin Nutr* 94: 1943S-1952S. doi:10.3945/ajcn.110.000927. PubMed: 22049164.
- Lillicrop KA, Phillips ES, Jackson AA, Hanson MA, Burdge GC (2005) Dietary restriction of pregnant rats induces and folic acid supplementation prevents epigenetic modification of hepatic gene expression in the offspring. *J Nutr* 135: 1382-1386. PubMed: 15930441.
- Torrens C, Brawley L, Anthony FW, Dance CS, Dunn R et al. (2006) Folate supplementation during pregnancy improves offspring cardiovascular dysfunction induced by protein restriction. *Hypertension* 47: 982-987. doi:10.1161/01.HYP.0000215580.43711.d1. PubMed: 16585422.
- Jackson AA, Dunn RL, Marchand MC, Langley-Evans SC (2002) Increased systolic blood pressure in rats induced by a maternal low-protein diet is reversed by dietary supplementation with glycine. *Clin Sci (Lond)* 103: 633-639. PubMed: 12444916.
- Davison JM, Mellott TJ, Kovacheva VP, Blusztajn JK (2009) Gestational choline supply regulates methylation of histone H3, expression of histone methyltransferases G9a (Kmt1c) and Suv39h1 (Kmt1a), and DNA methylation of their genes in rat fetal liver and brain. *J Biol Chem* 284: 1982-1989. PubMed: 19001366.
- Jiang X, Yan J, West AA, Perry CA, Malysheva OV et al. (2012) Maternal choline intake alters the epigenetic state of fetal cortisol-regulating genes in humans. *FASEB J* 26: 3563-3574. doi:10.1096/fj.12-207894. PubMed: 22549509.
- Niculescu MD, Craciunescu CN, Zeisel SH (2006) Dietary choline deficiency alters global and gene-specific DNA methylation in the developing hippocampus of mouse fetal brains. *FASEB J* 20: 43-49. doi:10.1096/fj.05-4707com. PubMed: 16394266.
- Greenberg JA, Bell SJ, Guan Y, Yu YH (2011) Folic Acid supplementation and pregnancy: more than just neural tube defect prevention. *Rev Obstet Gynecol* 4: 52-59. PubMed: 22102928.
- Bakker R, Timmermans S, Steegers EA, Hofman A, Jaddoe VW (2011) Folic acid supplements modify the adverse effects of maternal smoking on fetal growth and neonatal complications. *J Nutr* 141: 2172-2179. doi:10.3945/jn.111.142976. PubMed: 22031658.
- Furness D, Fenech M, Dekker G, Khong TY, Roberts C et al. (2011). Folate Vitamin B12, Vitamin B6 and homocysteine: impact on pregnancy outcome. *Matern Child Nutr*
- Shah PS, Ohlsson A (2009) Effects of prenatal multimicronutrient supplementation on pregnancy outcomes: a meta-analysis. *CMAJ* 180: E99-108. PubMed: 19506270.
- Mehedint MG, Craciunescu CN, Zeisel SH (2010) Maternal dietary choline deficiency alters angiogenesis in fetal mouse hippocampus.

- Proc Natl Acad Sci U S A 107: 12834-12839. doi:10.1073/pnas.0914328107. PubMed: 20624989.
33. Veenema K, Solis C, Li R, Wang W, Maletz CV et al. (2008) Adequate Intake levels of choline are sufficient for preventing elevations in serum markers of liver dysfunction in Mexican American men but are not optimal for minimizing plasma total homocysteine increases after a methionine load. *Am J Clin Nutr* 88: 685-692. PubMed: 18779284.
 34. Zeisel SH (2009) Importance of methyl donors during reproduction. *Am J Clin Nutr* 89: 673S-677S. doi:10.3945/ajcn.2008.26811D. PubMed: 19116320.
 35. Maloney CA, Hay SM, Reid MD, Duncan G, Nicol F et al. (2012) A methyl-deficient diet fed to rats during the pre- and peri-conception periods of development modifies the hepatic proteome in the adult offspring. *Genes Nutr*.
 36. Waterland RA, Dolinoy DC, Lin JR, Smith CA, Shi X et al. (2006) Maternal methyl supplements increase offspring DNA methylation at Axin Fused. *Genesis* 44: 401-406. doi:10.1002/dvg.20230. PubMed: 16868943.
 37. Wolff GL, Kodell RL, Moore SR, Cooney CA (1998) Maternal epigenetics and methyl supplements affect agouti gene expression in Avy/a mice. *FASEB J* 12: 949-957. PubMed: 9707167.
 38. Coupé B, Grit I, Darmaun D, Parnet P (2009) The timing of "catch-up growth" affects metabolism and appetite regulation in male rats born with intrauterine growth restriction. *Am J Physiol Regul Integr Comp Physiol* 297: R813-R824. doi:10.1152/ajpregu.00201.2009. PubMed: 19605764.
 39. Vandesompele J, De Preter K, Pattyn F, Poppe B, Van Roy N et al. (2002) Accurate normalization of real-time quantitative RT-PCR data by geometric averaging of multiple internal control genes. *Genome Biol* 3: RESEARCH0034. PubMed: 12184808.
 40. Li LC, Dahiya R (2002) MethPrimer: designing primers for methylation PCRs. *Bioinformatics* 18: 1427-1431. doi:10.1093/bioinformatics/18.11.1427. PubMed: 12424112.
 41. Stöger R (2006) In vivo methylation patterns of the leptin promoter in human and mouse. *Epigenetics* 1: 155-162. doi:10.4161/epi.1.4.3400. PubMed: 17965621.
 42. Melzner I, Scott V, Dorsch K, Fischer P, Wabitsch M et al. (2002) Leptin gene expression in human preadipocytes is switched on by maturation-induced demethylation of distinct CpGs in its proximal promoter. *J Biol Chem* 277: 45420-45427. doi:10.1074/jbc.M208511200. PubMed: 12213831.
 43. Palou M, Priego T, Sánchez J, Torrens JM, Palou A et al. (2010) Moderate caloric restriction in lactating rats protects offspring against obesity and insulin resistance in later life. *Endocrinology* 151: 1030-1041. doi:10.1210/en.2009-0934. PubMed: 20068006.
 44. Palou M, Torrens JM, Priego T, Sánchez J, Palou A et al. (2011) Moderate caloric restriction in lactating rats programs their offspring for a better response to HF diet feeding in a sex-dependent manner. *J Nutr Biochem* 22: 574-584. doi:10.1016/j.jnutbio.2010.05.001. PubMed: 20970312.
 45. Helston RM, Phillips SR, McKay JA, Jackson KA, Mathers JC et al. (2007) Zinc transporters in the mouse placenta show a coordinated regulatory response to changes in dietary zinc intake. *Placenta* 28: 437-444. doi:10.1016/j.placenta.2006.07.002. PubMed: 16914197.
 46. Tian X, Diaz FJ (2013) Acute dietary zinc deficiency before conception compromises oocyte epigenetic programming and disrupts embryonic development. *Dev Biol* 376: 51-61. doi:10.1016/j.ydbio.2013.01.015. PubMed: 23348678.
 47. Waterland RA, Jirtle RL (2003) Transposable elements: targets for early nutritional effects on epigenetic gene regulation. *Mol Cell Biol* 23: 5293-5300. doi:10.1128/MCB.23.15.5293-5300.2003. PubMed: 12861015.
 48. Waterland RA, Travisano M, Tahiliani KG, Rached MT, Mirza S (2008) Methyl donor supplementation prevents transgenerational amplification of obesity. *Int J Obes (Lond)* 32: 1373-1379. doi:10.1038/ijo.2008.100. PubMed: 18626486.
 49. Hogg K, Blair JD, von Dadelszen P, Robinson WP (2013) Hypomethylation of the LEP gene in placenta and elevated maternal leptin concentration in early onset pre-eclampsia. *Mol Cell Endocrinol* 367: 64-73. doi:10.1016/j.mce.2012.12.018. PubMed: 23274423.
 50. Gregoire FM, Smas CM, Sul HS (1998) Understanding adipocyte differentiation. *Physiol Rev* 78: 783-809. PubMed: 9674695.
 51. Bouret SG (2010) Role of early hormonal and nutritional experiences in shaping feeding behavior and hypothalamic development. *J Nutr* 140: 653-657. doi:10.3945/jn.109.112433. PubMed: 20107150.
 52. Sánchez J, Priego T, Palou M, Tobaruela A, Palou A et al. (2008) Oral supplementation with physiological doses of leptin during lactation in rats improves insulin sensitivity and affects food preferences later in life. *Endocrinology* 149: 733-740. PubMed: 17991728.
 53. Teng YW, Ellis JM, Coleman RA, Zeisel SH (2012) Mouse betaine-homocysteine S-methyltransferase deficiency reduces body fat via increasing energy expenditure and impairing lipid synthesis and enhancing glucose oxidation in white adipose tissue. *J Biol Chem* 287: 16187-16198. doi:10.1074/jbc.M111.303255. PubMed: 22362777.