

Tricarboxylic Acid Cycle and One-Carbon Metabolism Pathways Are Important in *Edwardsiella ictaluri* Virulence

Neeti Dahal¹, Hossam Abdelhamed², Jingjun Lu¹, Attila Karsi^{1*}, Mark L. Lawrence^{1*}

¹ Department of Basic Sciences, College of Veterinary Medicine Sciences, Mississippi State University, Mississippi State, Mississippi, United States of America, ² Department of Fish Diseases and Management, Faculty of Veterinary Medicine, Benha University, Moshtohor-Toukh, Egypt

Abstract

Edwardsiella ictaluri is a Gram-negative facultative intracellular pathogen causing enteric septicemia of channel catfish (ESC). The disease causes considerable economic losses in the commercial catfish industry in the United States. Although antibiotics are used as feed additive, vaccination is a better alternative for prevention of the disease. Here we report the development and characterization of novel live attenuated *E. ictaluri* mutants. To accomplish this, several tricarboxylic acid cycle (*sdhC*, *mdh*, and *frdA*) and one-carbon metabolism genes (*gcvP* and *glyA*) were deleted in wild type *E. ictaluri* strain 93-146 by allelic exchange. Following bioluminescence tagging of the *E. ictaluri* Δ *sdhC*, Δ *mdh*, Δ *frdA*, Δ *gcvP*, and Δ *glyA* mutants, their dissemination, attenuation, and vaccine efficacy were determined in catfish fingerlings by in vivo imaging technology. Immunogenicity of each mutant was also determined in catfish fingerlings. Results indicated that all of the *E. ictaluri* mutants were attenuated significantly in catfish compared to the parent strain as evidenced by 2,265-fold average reduction in bioluminescence signal from all the mutants at 144 h post-infection. Catfish immunized with the *E. ictaluri* Δ *sdhC*, Δ *mdh*, Δ *frdA*, and Δ *glyA* mutants had 100% relative percent survival (RPS), while *E. ictaluri* Δ *gcvP* vaccinated catfish had 31.23% RPS after re-challenge with the wild type *E. ictaluri*.

Citation: Dahal N, Abdelhamed H, Lu J, Karsi A, Lawrence ML (2013) Tricarboxylic Acid Cycle and One-Carbon Metabolism Pathways Are Important in *Edwardsiella ictaluri* Virulence. PLoS ONE 8(6): e65973. doi:10.1371/journal.pone.0065973

Editor: Mark R. Liles, Auburn University, United States of America

Received: February 28, 2013; **Accepted:** April 29, 2013; **Published:** June 7, 2013

Copyright: © 2013 Dahal et al. This is an open-access article distributed under the terms of the Creative Commons Attribution License, which permits unrestricted use, distribution, and reproduction in any medium, provided the original author and source are credited.

Funding: The research reported herein was supported by United States Department of Agriculture grant #2009-65119-05671 to MLL. The funders had no role in study design, data collection and analysis, decision to publish, or preparation of the manuscript.

Competing Interests: The authors have declared that no competing interests exist.

* E-mail: lawrence@cvm.msstate.edu (MLL); karsi@cvm.msstate.edu (AK)

Introduction

Channel catfish, *Ictalurus punctatus*, farming is the largest aquaculture industry in the United States, and enteric septicemia of catfish (ESC), caused by *Edwardsiella ictaluri*, is the most prevalent disease affecting this industry. Although Romet[®] 30, Terramycin[®], and Aquaflox[®] are approved antibiotics to treat infections in commercial catfish by oral delivery in medicated feed, effectiveness is limited because fish develop anorexia at early stages of the infection. Also, antibiotic resistant *E. ictaluri* strains can emerge [1]. Therefore, vaccination is the preferred method for prevention of ESC.

Live attenuated vaccines can provide effective protection against certain diseases if they can express protective antigens without causing disease in the host [2]. In *E. ictaluri*, some candidate live attenuated vaccines that have been developed include chondroitinase [3] and auxotrophic (*aroA* and *purA*) [4,5] mutants. However, none of these vaccine candidates are in commercial production. The commercial vaccine Aquavac-ESC (RE-33) was developed by selecting for rifampin resistance [6]. However, antibiotic resistance is not a desired trait for a vaccine. In addition, the genetic basis for attenuation in RE-33 is undefined [7], although it is known that RE-33 expresses shortened LPS O side chains [8]. Despite the availability of Aquavac-ESC, ESC is still the most prevalent disease in the catfish industry [9,10].

E. ictaluri is considered a facultative intracellular pathogen, and it is capable of surviving inside channel catfish neutrophils and macrophages [11,12]. Although *E. ictaluri* is effectively phagocytosed by catfish neutrophils, it is only killed by neutrophils to a limited extent [11,13]. A recent study by Karsi et al. [14] showed that genes encoding tricarboxylic acid (TCA) cycle enzymes, glycine cleavage system, a sigmaE regulator, the SoxS oxidative response system, and a plasmid-encoded type III secretion system (TTSS) effector are important for survival in neutrophils [14]. The same study discovered that some neutrophil-susceptible *E. ictaluri* strains were highly attenuated and demonstrated very good potential as live attenuated vaccines. In particular, strains with insertion mutations in genes encoding TCA cycle enzymes succinate dehydrogenase (*sdhC*) (*EiAKMut5*) and malate dehydrogenase (*mdh*) (*EiAKMut12*) generated better protection than the available commercial vaccine when juvenile catfish were vaccinated by immersion [14]. Similarly, *E. ictaluri* glycine dehydrogenase (*gcvP*) mutants (*EiAKMut02* and *EiAKMut08*) were also completely attenuated and had better vaccine efficacy than the commercial vaccine [14]. Glycine dehydrogenase is part of the glycine cleavage system pathway, which is part of one-carbon (C1) metabolism. Therefore, the objective of this research was to introduce in-frame deletions in *E. ictaluri* *sdhC*, *mdh*, and *frdA* genes (encoding enzymes in the TCA cycle) and *gcvP* and *glyA* genes

(encoding C1 metabolism proteins) to determine their roles in *E. ictaluri* virulence.

Materials and Methods

Ethics statement

All fish experiments were conducted in accordance with a protocol approved by the Institutional Animal Care and Use Committee (IACUC) at Mississippi State University.

Bacterial strains, plasmids, and growth conditions

Bacterial strains and plasmids used in this work are listed in Table 1. *E. ictaluri* was grown at 30°C using brain heart infusion (BHI) broth and agar (Difco, Sparks, MD). *Escherichia coli* were grown at 37°C using Luria-Bertani (LB) broth and agar (Difco). *E. coli* CC118 λ pir and SM10 λ pir/S17-1 λ pir were used for cloning gene deletions into suicide plasmid pMEG-375 and transferring recombinant pMEG-375 or pAK_{gfp}lux1 into *E. ictaluri*. Ampicillin was used at 100 µg/ml to maintain pMEG-375 and pAK_{gfp}lux1. Colistin was used at 12.5 µg/ml for counter selection against *E. coli* SM10 λ pir following conjugation. *E. ictaluri* strains were cultivated for 18 h (stationary phase) for all fish challenges.

Construction and bioluminescence tagging of in-frame deletion mutants

The method of overlap extension PCR [15] was used to generate in-frame deletions of *E. ictaluri* *sdhC*, *mdh*, *frdA*, *gcvP*, and *glyA*. Four primers were designed for each gene including forward (flfp), internal-reverse (lfrp), internal forward (rflp), and reverse primers (rfrp) (Table 2). Restriction sites were included in forward and reverse primers. Genomic DNA was isolated from *E. ictaluri* using a Wizard Genomic DNA Kit (Promega, Madison, WI) and used as template in PCR. Upper fragments were amplified by forward and internal-reverse primer sets while reverse and internal-forward primer sets were used to amplify lower fragments.

The resulting upper and lower PCR products were gel extracted using a QIAquick Gel Extraction Kit (Qiagen, Valencia, CA), mixed in a 1:1 ratio, and then re-amplified using the forward and reverse primers. The resulting in-frame deleted fragment was purified by using a QIAquick Gel Extraction Kit (Qiagen, Valencia, CA). The purified PCR product was digested with appropriate restriction enzymes (Promega) (Table 1) and cleaned using a Wizard SV Gel and PCR Clean-Up Kit (Promega).

The suicide plasmid pMEG-375 was purified from an overnight *E. coli* culture by a QIAprep Spin Miniprep Kit (Qiagen) and cut with restriction enzymes respective to the inserts, producing compatible ends. The purified PCR product with in-frame deletion was ligated into pMEG-375 vector using T4 DNA Ligase (Promega) at 4°C overnight, generating p*Ei*Δ*sdhC*, p*Ei*Δ*mdh*, p*Ei*Δ*frdA*, p*Ei*Δ*gcvP*, and p*Ei*Δ*glyA* (Table 1). Insert in each plasmid was confirmed by restriction enzyme digestion as well as sequencing.

The suicide plasmids with in-frame deleted genes were transferred into *E. coli* SM10 λ pir/S17-1 λ pir by electroporation and mobilized into *E. ictaluri* 93-146 by conjugation [16]. The recipient bacteria were spread on BHI plates containing colistin (12.5 µg/ml) and ampicillin (100 µg/ml) to select *E. ictaluri* with integrated vector by single crossover through allelic exchange. Ampicillin resistant colonies were propagated on BHI plates to allow for the second crossover allelic exchange, followed by streaking on BHI plates with 5% sucrose, 0.35% mannitol, and colistin to select for loss of pMEG-375 with *sacB* gene. Potential mutant colonies were tested for ampicillin sensitivity to ensure loss of the plasmid. Deleted regions were amplified from the resulting ampicillin sensitive colonies and confirmed by sequencing. After confirmation, *Ei*Δ*sdhC*, *Ei*Δ*mdh*, *Ei*Δ*frdA*, *Ei*Δ*gcvP*, and *Ei*Δ*glyA* mutants were labeled with bioluminescence using pAK_{gfp}lux1 as described in Karsi and Lawrence [16].

Table 1. Bacterial strains and plasmids.

Strain	Relevant Characteristics	References
<i>Edwardsiella ictaluri</i>		
93-146	Wild type; pEI1 ⁺ ; pEI2 ⁺ ; Col ^r	[32]
<i>Ei</i> Δ <i>frdA</i>	93-146 derivative; pEI1 ⁺ ; pEI2 ⁺ ; Col ^r ; Δ <i>frdA</i>	This study
<i>Ei</i> Δ <i>gcvP</i>	93-146 derivative; pEI1 ⁺ ; pEI2 ⁺ ; Col ^r ; Δ <i>gcvP</i>	This study
<i>Ei</i> Δ <i>glyA</i>	93-146 derivative; pEI1 ⁺ ; pEI2 ⁺ ; Col ^r ; Δ <i>glyA</i>	This study
<i>Ei</i> Δ <i>sdhC</i>	93-146 derivative; pEI1 ⁺ ; pEI2 ⁺ ; Col ^r ; Δ <i>sdhC</i>	This study
<i>Ei</i> Δ <i>mdh</i>	93-146 derivative; pEI1 ⁺ ; pEI2 ⁺ ; Col ^r ; Δ <i>mdh</i>	This study
<i>Escherichia coli</i>		
CC118 λ pir	Δ(<i>ara-leu</i>); <i>araD</i> ; Δ <i>lacX74</i> ; <i>galE</i> ; <i>galk</i> ; <i>phoA20</i> ; <i>thi-1</i> ; <i>rpsE</i> ; <i>rpoB</i> ; <i>argE</i> (Am); <i>recA</i> ; λ pirR6K	[33]
SM10 λ pir	<i>thi</i> ; <i>thr</i> ; <i>leu</i> ; <i>tonA</i> ; <i>lacY</i> ; <i>supE</i> ; <i>recA</i> ; ::RP4-2-Tc::Mu; Km ^r ; λ pirR6K	[34]
S17-1 λ pir	RP4-2 (Km::Tn7, Tc::Mu-1), Δ <i>uidA3</i> ::pir ⁺ , <i>recA1</i> , <i>endA1</i> , <i>thi-1</i> , <i>hsdR17</i> , <i>creC510</i>	[35]
Plasmids		
pMEG-375	8142 bp, Amp ^r , Cm ^r , <i>lacZ</i> , R6K <i>ori</i> , <i>mob incP</i> , <i>sacR sacB</i>	[36]
p <i>Ei</i> Δ <i>frdA</i>	10242 bp, Δ <i>frdA</i> , pMEG-375	This study
p <i>Ei</i> Δ <i>gcvP</i>	12231 bp, Δ <i>gcvP</i> , pMEG-375	This study
p <i>Ei</i> Δ <i>glyA</i>	14276 bp, Δ <i>glyA</i> , pMEG-375	This study
p <i>Ei</i> Δ <i>sdhC</i>	16295 bp, Δ <i>sdhC</i> , pMEG-375	This study
p <i>Ei</i> Δ <i>mdh</i>	18350 bp, Δ <i>mdh</i> , pMEG-375	This study

doi:10.1371/journal.pone.0065973.t001

Table 2. Primers with restriction enzyme used for the construction of the *E. ictaluri* mutants.

Genes	Primer ID	Primer Sequence ((5'→3') ^a)	RE ^b
<i>frdA</i>	<i>EifrdAlf1p</i>	AAGAGCTCTCGTCCACTTCATTATCAGAC	<i>SacI</i>
	<i>EifrdAlfrp</i>	GTGGAAGTGAAATCGAAAGA	
	<i>EifrdArf1p</i>	<u>TCTTTCGATTTC</u> CACTCCACGAAGCTCAGGAAGCCAAGAAG	
	<i>EifrdArfrp</i>	AATCTAGAGCAGGGAGATGATATTGAGGAC	<i>XbaI</i>
	<i>EifrdA01S</i>	CCTCAACTGAAGATTGCCTTA	
<i>gcvP</i>	<i>EigcvPlf1p</i>	AATCTAGACCTTTGGCGTGAGATATGC	<i>XbaI</i>
	<i>EigcvPlfrp</i>	AGCATCACTGTTTTCAAGCTG	
	<i>EigcvPrf1p</i>	<u>CAGCTTGAAAACAGT</u> GATGCTGTAAAGCGCTGGACGATGT	
	<i>EigcvPrfrp</i>	AAGAGCTCCGGACAGAGACATACCACCAA	<i>SacI</i>
	<i>Eigcvp01S</i>	GGCCTTTTGGTATGATTTGC	
<i>glyA</i>	<i>EiglyAlf1p</i>	AAGAGCTCGGGCATGGGTGAGTGAATAC	<i>SacI</i>
	<i>EiglyAlfrp</i>	CCACAGCTCGGTATCGTAATC	
	<i>EiglyArf1p</i>	<u>GATTACGATACCGAGCTGTGGTGAACGTCTTCCGGTCTATG</u>	
	<i>EiglyArfrp</i>	AA CCCGGG GCCTAGACGATGTCTCCTTGA	<i>SmaI</i>
	<i>EiglyA01S</i>	GGGCCAGATTTACTCAAACC	
<i>sdhC</i>	<i>EisdhClf1p</i>	AAGAGCTCCAGCCTCCTTTGGTACTGCTA	<i>SacI</i>
	<i>EisdhClfrp</i>	GCAAATCCAGATTGACAGGTCT	
	<i>EisdhCr1p</i>	<u>AGACCTGTCAATCTGGATTGCGGGTATGGTAAGCAACGCATC</u>	
	<i>EisdhCrfrp</i>	AA CCCGGG CCCCATCATGTAGTGACAGGT	<i>SmaI</i>
	<i>EisdhC01S</i>	CTCAGTCTCGTGGGATTTGC	
<i>mdh</i>	<i>Eimdhl1p</i>	AAGAGCTCGGCTTTATAATGGCGTGTGG	<i>SacI</i>
	<i>Eimdhlfrp</i>	AGGCAGCTGAGTCTTAAGCAG	
	<i>Eimdhrf1p</i>	<u>CTGCTTAAGACTCAGCTGCCTCTGGGCGAAGACTTTATCAAT</u>	
	<i>Eimdhrfrp</i>	AA CCCGGG GGAGCAGGCCCTACAAGACT	<i>SmaI</i>
	<i>Eimdho1S</i>	CAGCTCGCAATCTGAGTGTT	

^aRE: restriction enzyme sequence added to the 5' end of the primer sequence.

^bBold letters at the 5' end of the primer sequence represent RE site. AA nucleotides were added to the end of each primer containing a RE site to increase the efficiency of enzyme cut. Underlined bases in internal primer (rf1p) indicate reverse complemented internal primer (lfrp) sequence.

doi:10.1371/journal.pone.0065973.t002

Mutant virulence and ability to protect against *E. ictaluri* infection

Experimental infections were conducted in 40-L challenge tanks supplied with flow-through dechlorinated municipal water. Water temperature was maintained at 25°C (±2) throughout the experiments. Twenty-eight specific pathogen free (SPF) catfish fingerlings (14.2±0.35 cm, 25.45±1.82 g) were randomly allocated into seven groups (4 fish/group). Five treatments were injected with *E. ictaluri* mutants, one group was injected with wild type *E. ictaluri* strain 93-146, and the last group served as negative control (phosphate-buffered saline (PBS)). Fish were anesthetized in water containing 100 mg/L MS222 and injected with approximately 1×10⁴ colony forming units (CFU) in 100 µl PBS.

Bioluminescent imaging (BLI) was conducted using an IVIS 100 Imaging System to measure number of photons emitted by bioluminescent bacteria in fish [17]. Briefly, catfish were anesthetized in water containing 100 mg/L MS222 and transferred immediately to the photon collection chamber for image capture. Total photon emissions from the whole fish body were collected at an exposure time of one min. Following BLI imaging, fish were returned to well-aerated water for recovery. BLI was conducted at 2, 4, 8, and 24 h post-infection, and subsequent daily intervals until 168 h. Bioluminescence was quantified from the fish images using Living Image Software v 2.5 (Caliper Corporation.,

Hopkinton, Massachusetts), and mean photon counts for each treatment were used in statistical analysis.

To determine the ability of mutants to protect against *E. ictaluri* infection, the juvenile catfish vaccinated with mutants (virulence challenge) were immersion challenged [14] with 4.8×10⁷ bioluminescent wild type *E. ictaluri* at 4 weeks post-vaccination. Photon emissions from fish were collected at 2, 4, 8, 24, 48, 72, and 96 h post-infection using an IVIS 100 as described above, and statistical analysis was performed on the mean photon counts.

Mutant ability to protect against ESC induced mortalities

Approximately 420 eight-month-old SPF channel catfish fingerlings (17.61±0.63 cm, 47.47±5.31 g) were stocked into 21 tanks at a rate of 20 fish/tank. Each treatment had three replicate tanks. Treatments consisted of *EiΔsdhC*, *EiΔmdh*, *EiΔfrdA*, *EiΔglyA* and *EiΔgcvP* (vaccination), wild type *E. ictaluri* (positive control), and BHI (sham control). Channel catfish were vaccinated by immersion in water containing approximately 4.3×10⁷ CFU/ml of water for 1 h, followed by gradual removal of bacteria. Mortalities were recorded for 21 days following vaccination. At 21 days post-vaccination, both vaccinated and non-vaccinated treatments were immersion exposed to wild type parent *E. ictaluri* 93-146 (approximately 3.06×10⁷ CFU/ml), and fish mortalities were recorded daily for 14 days. Relative percent survival (RPS) was

calculated according to the following formula: $RPS = [1 - (\% \text{ mortality of vaccinated fish} / \% \text{ mortality of non-vaccinated fish})] \times 100$ [18].

Statistical analysis

Photon counts were transformed by taking the base 10 logarithm to improve normality. One-way ANOVA was conducted using SPSS V19 (IBM Corp., Armonk, NY) to compare mean photon counts at each time point ($p < 0.05$). Pairwise comparison of the means was done using Tukey procedure. Data was then retransformed for interpretation.

Results

Construction of the *E. ictaluri* in-frame deletion mutants

Five in-frame mutants (*Ei*Δ*sdhC*, *Ei*Δ*mdh*, *Ei*Δ*frdA*, *Ei*Δ*gcvP*, and *Ei*Δ*glyA*) were obtained successfully (Fig. 1) by deleting on average over 90% of each gene (Table 3).

Mutant virulence and ability to protect against *E. ictaluri* infection

BLI results revealed that bioluminescence (quantified as photon counts) from the catfish infected with *Ei*Δ*sdhC*, *Ei*Δ*mdh*, *Ei*Δ*frdA*, *Ei*Δ*gcvP*, and *Ei*Δ*glyA* mutants were low at 2, 6, and 12 h post-infection. However, bioluminescence for mutants *Ei*Δ*mdh*, *Ei*Δ*frdA*, and *Ei*Δ*gcvP* increased from 24 h to 72 h and then decreased thereafter. Bioluminescence for *Ei*Δ*sdhC* followed the same pattern as the other mutants, except the signal peaked at 120 h. However, in mutant *Ei*Δ*glyA*, very low bioluminescence was detected at all time points. In fish infected with wild type *E. ictaluri*, bioluminescence increased until all fish died (Fig. 2). Average photon counts in the fish infected with 93-146 at 72 h post-infection were approximately 7-fold higher than the average of all fish infected with mutant strains, and it was 2,265-fold higher at 144 h. At this time point, fish infected with wild type *E. ictaluri* strain died, while bioluminescence from fish infected with mutant strains was in decline (Fig. 2). Photon counts were 118- and 5,329-fold higher in wild type *E. ictaluri* compared to *Ei*Δ*glyA* at 72 h and 144 h post-infection, respectively (Fig. 2). In the wild type infected treatment, two fish died at 144 h post-infection, and the remaining two fish

died at 168 h. Mean photon counts between all mutants (except *Ei*Δ*frdA*) and wild type *E. ictaluri* were significantly different ($p < 0.5$) at 24 h and thereafter. Mean photon counts for wild type *E. ictaluri* were significantly higher than *Ei*Δ*frdA* at 48 h and thereafter.

When mutant challenged fish were immersion exposed to wild type *E. ictaluri* at 4 weeks post-vaccination, photon counts were significantly lower ($p < 0.5$) at each time point for the vaccinated fish compared to the sham-vaccinated control (Fig. 3). Average photon counts in sham-vaccinated fish at 6 h post-infection were 4-fold higher than the average of all five mutant-vaccinated fish treatments, which increased to 14-fold at 96 h. At this time, bioluminescence in *Ei*Δ*sdhC* and *Ei*Δ*mdh* vaccinated fish was declining, while bioluminescence in *Ei*Δ*frdA*, *Ei*Δ*gcvP*, and *Ei*Δ*glyA* vaccinated fish was increasing (Fig. 3). At 96 h post-infection, all fish in the sham vaccinated group died. In summary, BLI demonstrated that all mutants are significantly attenuated compared to wild type *E. ictaluri*, and all mutants except *Ei*Δ*glyA* provided significant protection against *E. ictaluri* infection.

Mutant ability to protect against ESC induced mortalities

Vaccination of channel catfish with *Ei*Δ*sdhC*, *Ei*Δ*mdh*, *Ei*Δ*frdA*, and *Ei*Δ*glyA* provided complete protection (100% survival) against wild type *E. ictaluri* 93-146 while the *Ei*Δ*gcvP* mutant showed lower efficacy (68.89% survival) (Fig. 4). Survival in *Ei*Δ*sdhC*, *Ei*Δ*mdh*, *Ei*Δ*frdA*, and *Ei*Δ*glyA* vaccinated groups was 1.96-fold higher than that of the non-vaccinated group when re-challenged with wild type *E. ictaluri* (100% vs 51.11%).

Discussion

The primary objective of this study was to construct live attenuated *E. ictaluri* strains based on mutations in genes encoding enzymes in the TCA cycle (*mdh*, *schC*, and *frdA*) and enzymes involved in C1 metabolism (*gcvP* and *glyA*). Additional aims included assessing the mutant strains' virulence in catfish and ability to protect against wild type *E. ictaluri* infection. We constructed in-frame deletion mutants to avoid polar effects of the mutations and to avoid insertion of antibiotic resistance genes, which is undesirable in vaccine strains. Splicing overlap extension combined with allelic exchange is an effective method for gene deletion in *E. ictaluri* and has been reported previously [19,20].

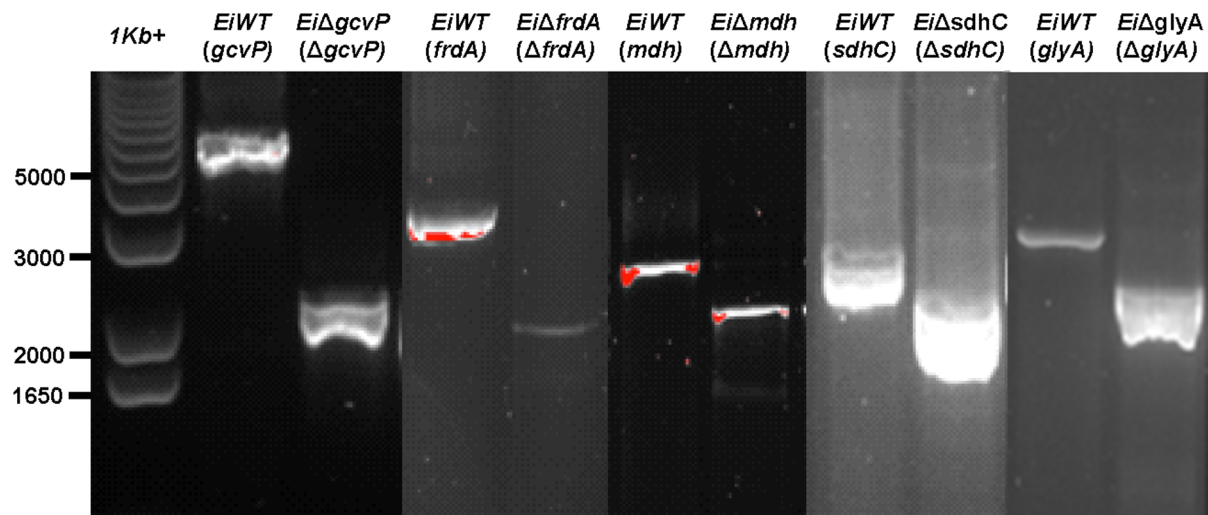


Figure 1. Genotypic confirmation of the *E. ictaluri* *gcvP*, *frdA*, *mdh*, *sdhC*, and *glyA* mutants. Genomic DNAs was amplified from the *E. ictaluri* wild type and mutants using the two outside primers (lflp and rfrp) and separated on 1% agarose gel.
doi:10.1371/journal.pone.0065973.g001

Table 3. Properties of the *E. ictaluri* TCA cycle and C1 metabolism genes and percentage of gene deleted.

Gene	Locus	Product	ORF (bp/aa)	Remaining (bp/aa)	% Deletion
<i>sdhC</i>	NT01EI_2872	Succinate dehydrogenase, cytochrome b556 subunit, putative	390/129	57/18	86.05
<i>mdh</i>	NT01EI_0446	Malate dehydrogenase, NAD-dependent, putative	939/312	99/32	89.74
<i>frdA</i>	NT01EI_0392	Fumarate reductase, flavoprotein subunit, putative	1800/899	126/41	95.44
<i>gcvP</i>	NT01EI_3351	Glycine dehydrogenase, putative	2884/960	114/37	96.15
<i>glyA</i>	NT01EI_3190	Serine hydroxymethyltransferase, putative	1254/417	75/24	94.24

doi:10.1371/journal.pone.0065973.t003

We utilized bioluminescence imaging to assess virulence of mutants, which allows better quantification compared to percent mortalities. It also enables sensitive detection of subclinical infection and mutants' abilities to invade and establish infection. Mutant strains *EiΔsdhC*, *EiΔmdh*, *EiΔfrdA*, and *EiΔgcvP* were

clearly able to establish infection because bioluminescence was detected after 12 h post-infection. However, channel catfish injected with the mutant strains started clearing the bacteria after 72 h post-infection. Thus, our results showed that although *EiΔsdhC*, *EiΔmdh*, *EiΔfrdA*, and *EiΔgcvP* do not cause mortalities,

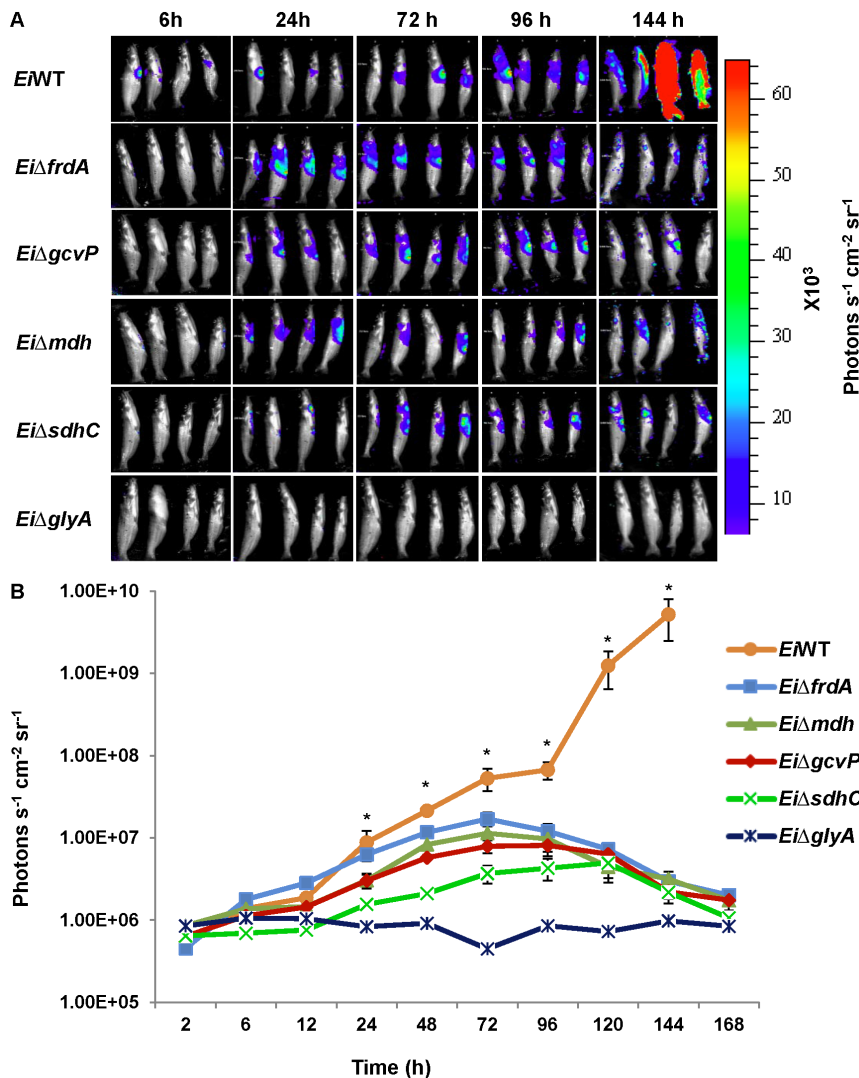


Figure 2. Bioluminescent imaging of vaccination/attenuation in live catfish after intraperitoneal injection. A, BLI imaging of catfish. B, Total photon emissions from each fish. Each data point represents the mean photon emissions from four fish. Two of the four channel catfish injected with wild type died at 144 h post-infection. The remaining two died at 168 h post-infection. Star indicates significant difference between wild type *E. ictaluri* and other mutants, except for *EiΔfrdA* at 24 h.

doi:10.1371/journal.pone.0065973.g002

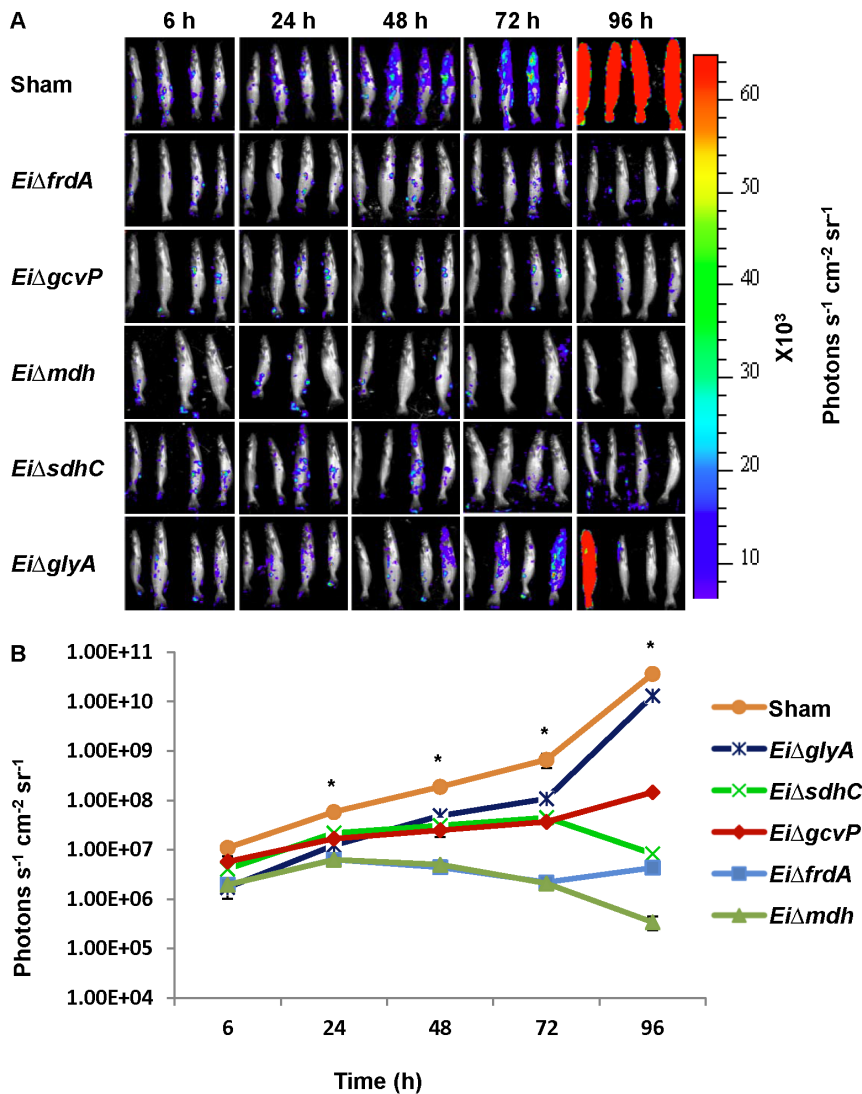


Figure 3. Bioluminescence imaging of juvenile catfish after immersion exposure to wild type *E. ictaluri*. Fish were challenged with *E. ictaluri* mutants as described in the virulence trial, and at 4 weeks post-vaccination they were challenged with bioluminescent wild type *E. ictaluri*. A, BLI imaging of catfish. B, Total photon emissions from each fish. Each data point represents the mean photon emissions from four fish. Star indicates significant difference between the *E. ictaluri* mutants and wild type. doi:10.1371/journal.pone.0065973.g003

they are able to invade and establish infection before being cleared. Because of mutants' abilities to survive and replicate in fish up to 72 h post-infection, we expected them to generate an immune response and protection against wild type *E. ictaluri*. On the other hand, the *Ei*Δ*glyA* mutant did not replicate well in the host, and we anticipated much less systemic protection from this mutant. By contrast, wild type *E. ictaluri* increased in quantity until mortality occurred. Our current study corroborated an earlier study showing that 1×10^9 photons⁻¹ cm⁻² steradian⁻¹ seems to be a critical threshold for bacterial tissue concentrations where mortality is imminent [21].

Ultimately, prevention of mortalities is used as a common measure of vaccine efficacy. Thus, we used percent survival to evaluate efficacy of our candidate vaccines in catfish fingerlings using immersion exposure, which is a practical route of vaccination of catfish fry in catfish production systems. Results for mutant strains *Ei*Δ*sdhC*, *Ei*Δ*mdh* and *Ei*Δ*gcvP* were similar to our previous study that evaluated vaccine efficacy of *E. ictaluri*

sdhC, *mdh*, and *gcvP* transposon insertion mutants [21]. In our previous study, *sdhC* and *mdh* insertion mutants gave 100% protection against *E. ictaluri* infection, and a *gcvP* insertion mutant gave 89.15% survival in catfish fingerlings. Our current results with deletion mutants show that attenuation is not due to polar effects of the insertion mutations. The deletion mutants have an additional advantage in that they do not carry antibiotic resistance genes. The current study is the first to report vaccine efficacy of *E. ictaluri* *Ei*Δ*glyA* and *Ei*Δ*frdA* mutants; both provided significant protection against mortalities by immersion vaccination.

We also evaluated vaccine efficacy of our candidate mutant strains using a more sensitive measure than percent survival; namely, we evaluated the ability of the mutant strains to prevent invasion of virulent *E. ictaluri* as monitored using BLI. Vaccination in this trial was by injection, which is not a practical route of vaccination for commercial catfish production, but it does allow accurate vaccine dose delivery. Protection results by injection vaccination were very similar to results obtained by immersion

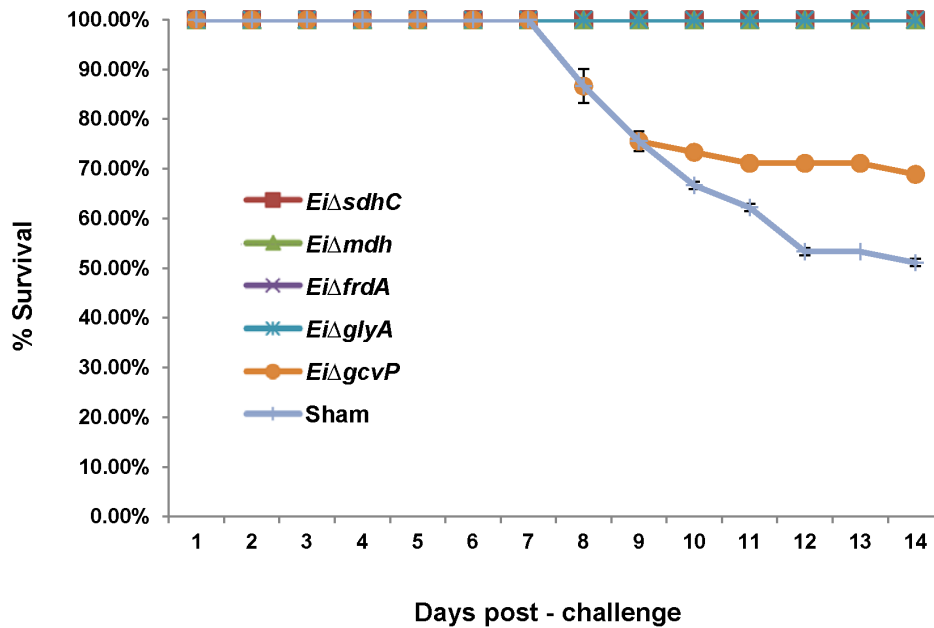


Figure 4. Percent survival of immersion vaccinated catfish. Catfish fingerlings were immersion vaccinated with the *Ei*Δ*mdh*, *Ei*Δ*sdhC*, *Ei*Δ*frdA*, *Ei*Δ*glyA*, and *Ei*Δ*gcvP* mutants and challenged with wild type *E. ictaluri* strain 93-146. Data points represent the mean percent survival of 20 fish per tank for each treatment.

doi:10.1371/journal.pone.0065973.g004

vaccination, except that *Ei*Δ*glyA* vaccination provided better protection by immersion vaccination than injection (Fig. 4). It is possible that immersion vaccination using *Ei*Δ*glyA* may activate mucosal immunity better, preventing wild type *E. ictaluri* septicemia. We saw the opposite trend when fish were vaccinated with the *Ei*Δ*gcvP* mutant, which protects fish better when vaccination is applied by injection rather than immersion.

Succinate dehydrogenase (SDH) is part of the aerobic respiratory chain in the TCA cycle, oxidizing succinate to fumarate while reducing ubiquinone to ubiquinol [22]. It is closely related to fumarate reductase, which catalyzes the reverse reaction. Succinate dehydrogenase and fumarate reductase can replace each other [22,23]. Although SdhC has similar function, hydrophobicity, and protein size to the membrane-binding subunit fumarate reductase (*FrdC*), *sdhC* and *frdC* do not share significant sequence identity [24]. The organic acids formate and succinate have a protective effect in stationary phase cells against killing effects of antimicrobial peptide BPI, which appears to disrupt the bacterial respiratory chain [25]. Maintenance of protective levels of formate and succinate requires the activity of formate dehydrogenase and succinate dehydrogenase, respectively.

In *E. coli* and *Salmonella*, succinate dehydrogenase is known to contribute to pathogenicity. Recently, it was shown that a full TCA cycle is required for *Salmonella enterica* virulence, and a *sdhDCA* mutant is attenuated in an oral mouse infection model [26], which is similar to our finding. In *Helicobacter pylori*, fumarate reductase was found to be essential for colonization of mouse gastric mucosa [27]. In *Salmonella enterica*, deletion of *sdhCDA* caused partial attenuation, and complete attenuation was achieved when both *sdhCDA* and *frdABCD* were deleted [28]. Our results indicated that deletion of only the *E. ictaluri* *sdhC* gene and deletion of only *frdA* resulted in full attenuation in catfish fingerlings. However, our previous results showed that catfish fry are more sensitive to *E. ictaluri* than catfish fingerlings (unpublished data), so further testing in catfish fry is warranted. Regardless, the data show that succinate dehydrogenase and fumarate reductase play

an important role in pathogenesis. The other mutant that was tested in this study was *mdh*, which encodes malate dehydrogenase. Our results show that *mdh* is also important in *E. ictaluri* virulence, which was consistent with findings in *Salmonella* using the mouse oral challenge model, where a *mdh* mutant was found to be highly attenuated [26].

The glycine cleavage system is a loosely associated four subunit enzyme complex that catalyzes the reversible oxidation of glycine to form 5, and 10-methylenetetrahydrofolate, which serves as a one carbon donor. It is one of two sources of C1 units; serine hydroxymethyltransferase is another source, and it is considered a more important source. Expression of the glycine cleavage enzyme system is induced by glycine [29,30], and *gcv* mutants are unable to use glycine as a C1 source and excrete glycine [31]. We have previously shown that *E. ictaluri* *gcvP* is required for virulence [14]. This is the first report that *glyA* is required for *E. ictaluri* virulence, and to our knowledge, this is the first report that serine hydroxymethyltransferase is associated with virulence in any bacterial species.

Although BLI for real-time monitoring of *E. ictaluri* infection in live fish was shown by our group [17], this is the first time we report the use of BLI to quantify the degree of *E. ictaluri* attenuation in channel catfish. It appears that BLI could be used for vaccine evaluation by using a relatively low number of fish (four fish in this work). Also, use of BLI provides a more sensitive measure of vaccine protection than percent mortalities.

In summary, our results showed that the *Ei*Δ*sdhC*, *Ei*Δ*mdh*, *Ei*Δ*frdA*, *Ei*Δ*gcvP*, and *Ei*Δ*glyA* mutants were significantly attenuated and provided protection against ESC under controlled laboratory conditions. Thus, *Ei*Δ*sdhC*, *Ei*Δ*mdh*, *Ei*Δ*frdA*, and *Ei*Δ*gcvP* mutants have potential for use as live attenuated vaccines for catfish fingerlings. The *E. ictaluri* Δ*glyA* mutant was found to be incapable of persisting in catfish when injected, which might be the reason for lower protection than when it is used in immersion vaccination. Based on these results, testing of these vaccine candidates in catfish fry is warranted.

Acknowledgments

We thank Michelle Banes for technical assistance. We also thank Dr. Scott Willard and Dr. Peter Ryan for use of the IVIS Imaging System in the Laboratory for Organismal and Cellular Imaging at the Department of Animal and Dairy Sciences. Further, we are grateful for the SPF catfish provided by the Laboratory Animal Resources and Care (LARAC) at the College of Veterinary Medicine.

References

- Dung TH, Haesebrouck F, Nguyen AH, Sorgeloos P, Baele M, et al. (2008) Antimicrobial susceptibility pattern of *Edwardsiella ictaluri* isolates from natural outbreaks of bacillary necrosis of *Pangasianodon hypophthalmus* in Vietnam. *Microbial Drug Resistance* 14: 311–316.
- Lan MZ, Peng X, Xiang MY, Xia ZY, Bo W, et al. (2007) Construction and characterization of a live, attenuated *estB* mutant of *Edwardsiella tarda* and its potential as a vaccine against the haemorrhagic septicaemia in turbot, *Scophthalmus maximus* (L.). *Fish & Shellfish Immunology* 23: 521–530.
- Cooper RK, Shotts EB, Nolan LK (1996) Use of a mini-transposon to study chondroitinase activity associated with *Edwardsiella ictaluri*. *Journal of Aquatic Animal Health* 8: 319–324.
- Lawrence ML, Cooper RK, Thune RL (1997) Attenuation, persistence, and vaccine potential of an *Edwardsiella ictaluri purA* mutant. *Infect Immun* 65: 4642–4651.
- Thune RL, Fernandez DH, Battista JR (1999) An *aroA* mutant of *Edwardsiella ictaluri* is safe and efficacious as a live, attenuated vaccine. *Journal of Aquatic Animal Health* 11: 358–372.
- Klesius PH, Shoemaker CA (1999) Development and use of modified live *Edwardsiella ictaluri* vaccine against enteric septicemia of catfish. *Adv Vet Med* 41: 523–537.
- Klesius PH, Shoemaker CA (1997) Heterologous isolates challenge of channel catfish, *Ictalurus punctatus*, immune to *Edwardsiella ictaluri*. *Aquaculture* 157: 147–155.
- Arias CR, Shoemaker CA, Evans JJ, Klesius PH (2003) A comparative study of *Edwardsiella ictaluri* parent (EILO) and *E. ictaluri* rifampicin-mutant (RE-33) isolates using lipopolysaccharides, outer membrane proteins, fatty acids, Biolog, API 20E and genomic analyses. *Journal of Fish Disease* 26: 415–421.
- USDA (2003) Highlights of NAHMS catfish 2003: part II. USDA:APHIS:VS:CEAH. Fort Collins, Colorado.
- Anonymous (2006) Case summary report aquatic diagnostic laboratory. Mississippi State University College of Veterinary Medicine.
- Ainsworth AJ, Dexiang C (1990) Differences in the phagocytosis of four bacteria by channel catfish neutrophils. *Developmental and Comparative Immunology* 14: 201–209.
- Booth NJ, Elkamel AA, Thune RL (2006) Intracellular replication of *Edwardsiella ictaluri* in channel catfish macrophages. *Journal of Aquatic Animal Health* 18: 101–108.
- Waterstrat PR, Ainsworth AJ, Capley G (1988) Use of a discontinuous Percoll gradient technique for the separation of channel catfish, *Ictalurus punctatus* (Rafinesque), peripheral blood leucocytes. *Journal of Fish Disease* 289–294.
- Karsi A, Gulsoy N, Corb E, Dumpala PR, Lawrence ML (2009) A high-throughput bioluminescence mutant screening strategy for identification of bacterial virulence genes. *Applied Environmental Microbiology* 75: 2166–2175.
- Horton RM, Cai ZL, Ho SN, Pease LR (1990) Gene splicing by overlap extension: tailor-made genes using the polymerase chain reaction. *Biotechniques* 8: 528–535.
- Karsi A, Lawrence ML (2007) Broad host range fluorescence and bioluminescence expression vectors for gram-negative bacteria. *Plasmid* 57: 286–295.
- Karsi A, Menanteau-Ledouble S, Lawrence ML (2006) Development of bioluminescent *Edwardsiella ictaluri* for noninvasive disease monitoring. *FEMS Microbiology Letters* 260: 216–223.
- Amend DF (1981) Potency testing of fish vaccines. *Developments in Biological Standardization* 49: 447–454.
- Abdelhamed H, Lu J, Shaheen A, Abbas A, Lawrence M, et al. (2013) Construction and evaluation of an *Edwardsiella ictaluri jhuC* mutant. *Veterinary Microbiology* 162: 858–865.
- Santander J, Xin W, Yang Z, Curtiss R (2010) The aspartate-semialdehyde dehydrogenase of *Edwardsiella ictaluri* and its use as balanced-lethal system in fish vaccinology. *PLoS One* 5: e15944.
- Karsi A, Menanteau-Ledouble S, Lawrence ML (2006) Development of bioluminescent *Edwardsiella ictaluri* for noninvasive disease monitoring. *FEMS Microbiol Lett* 260: 216–223.
- Maklashina E, Berthold DA, Cecchini G (1998) Anaerobic expression of *Escherichia coli* succinate dehydrogenase: Functional replacement of fumarate reductase in the respiratory chain during anaerobic growth. *Journal of Bacteriology* 22: 5989–5996.
- Guest JR (1981) Partial replacement of succinate dehydrogenase function by phage- and plasmid-specified fumarate reductase in *Escherichia coli*. *Journal of General Microbiology* 122: 171–179.
- Wood WI, Capon DJ, Simonsen CC, Eaton DL, Gitschier J, et al. (1984) Expression of active human factor VIII from recombinant DNA. *Nature (London)* 312: 330–337.
- Barker HC, Kinsella N, Jaspe A, Friedrich T, O'Connor CD (2000) Formate protects stationary-phase *Escherichia coli* and *Salmonella* cells from killing by a cationic antimicrobial peptide. *Molecular Microbiology* 35: 1518–1529.
- Tchawa Yimga M, Leatham MP, Allen JH, Laux DC, Conway T, et al. (2006) Role of gluconeogenesis and the tricarboxylic acid cycle in the virulence of *Salmonella enterica* serovar typhimurium in BALB/c mice. *Infection and Immunity* 74: 1130–1140.
- Ge Z, Feng Y, Dangler CA, Xu S, Taylor NS, et al. (2000) Fumarate reductase is essential for *Helicobacter pylori* colonization of the mouse stomach. *Microbial Pathogenesis* 29: 279–287.
- Mercado-Lubo R, Gauger EJ, Leatham MP, Conway T, Cohen PS (2008) A *Salmonella enterica* serovar typhimurium succinate dehydrogenase/fumarate reductase double mutant is avirulent and immunogenic in BALB/c mice. *Infection and Immunity* 76: 1128–1134.
- Meedel TH, Pizer LI (1974) Regulation of one-carbon biosynthesis and utilization in *Escherichia coli*. *Journal of Bacteriology* 118: 905–910.
- Stauffer LT, Fogarty SJ, Stauffer GV (1994) Characterization of the *Escherichia coli gcv* operon. *Gene* 142: 17–22.
- Plamann MD, Rapp WD, Stauffer GV (1983) *Escherichia coli* K12 mutants defective in the glycine cleavage enzyme system. *Molecular and General Genetics* 192: 15–20.
- Lawrence ML (1997) Development and in vivo evaluation of a *purA* mutant strain of the channel catfish pathogen *Edwardsiella ictaluri*. *Veterinary Microbiology and Parasitology Ph.D.*
- Herrero M, de Lorenzo V, Timmis KN (1990) Transposon vectors containing non-antibiotic resistance selection markers for cloning and stable chromosomal insertion of foreign genes in Gram-negative bacteria. *Journal of Bacteriology* 172: 6557–6567.
- Miller VL, Mekalanos JJ (1998) A novel suicide vector and its use in construction of insertion mutations: osmoregulation of outer membrane proteins and virulence determinants in *Vibrio cholerae* requires *toxR*. *Journal of Bacteriology* 170: 2575–2583.
- Metcalf WW, Jiang W, Wanner BL (1994) Use of the rep technique for allele replacement to construct new *Escherichia coli* hosts for maintenance of R6K gamma origin plasmids at different copy numbers. *Gene* 138: 1–7.
- Dozois CM, Daigle F, Curtiss RI (2003) Identification of pathogen-specific and conserved genes expressed in vivo by an avian pathogenic *Escherichia coli* strain. *Proceedings of the National Academy of Sciences of the United States of America* 100: 247–252.

Author Contributions

Conceived and designed the experiments: ND HA JL AK MLL. Performed the experiments: ND HA JL. Analyzed the data: ND. Wrote the paper: ND JL AK MLL.