

Can Interferon-Gamma or Interferon-Gamma-Induced-Protein-10 Differentiate Tuberculosis Infection and Disease in Children of High Endemic Areas?

Mohammed Ahmed Yassin^{1,2}, Roberta Petrucci¹, Kefyalew Taye Garie², Gregory Harper¹, Isabel Arbide³, Melkamsew Aschalew⁴, Yared Merid⁴, Zelalem Kebede², Amin Ahmed Bawazir¹, Nabil Mohamed Abuamer¹, Luis Eduardo Cuevas^{1*}

1 Liverpool School of Tropical Medicine, Liverpool, United Kingdom, **2** Faculty of Medicine, University of Hawassa, Awassa, Ethiopia, **3** Bushullo Major Health Centre, Awassa, Ethiopia, **4** Southern Region Health Bureau, Awassa, Ethiopia

Abstract

Background: Diagnosis of childhood tuberculosis (TB) is difficult in high TB burden settings. Interferon-gamma-induced protein 10 (IP10) has been suggested as a marker of TB infection and disease, but its ability to differentiate the two conditions remains uncertain.

Objectives: To describe Interferon-gamma (INF γ) and IP10 expression in children with TB infection and disease and controls to assess their potential to differentiate latent and active TB.

Methods: This was a cross sectional study of 322 1–15 years old children with symptoms of TB (28 *confirmed*, 136 *probable* and 131 *unlikely* TB), 335 children in contact with adults with pulmonary TB and 156 community controls in Southern Ethiopia. The Tuberculin Skin Test (TST) and Quantiferon-In-Tube (QFT-IT) were performed. INF γ and IP10 were measured in plasma supernatants.

Results and Interpretation: Children with *confirmed* and *probable* TB and *contacts* were more likely to have TST+ (78.6%, 59.3% and 54.1%, respectively) than children with *unlikely* TB (28.7%) and *controls* (12.8%) ($p < 0.001$). Children with *confirmed* TB (59.3%) and *contacts* (44.7%) were more likely to have INF γ + than children with *probable* (37.6%) or *unlikely* TB (28.1%) and *controls* (13.1%) ($p < 0.001$). IP10 concentrations were higher in INF γ + children independently of TST ($p < 0.001$). There was no difference between IP10 concentrations of children with *confirmed* TB and *contacts* ($p = 0.8$) and children with and without HIV ($p > 0.1$). INF γ and IP10 can identify children with TB infection and disease, but cannot differentiate between the two conditions. HIV status did not affect the expression of IP10.

Citation: Yassin MA, Petrucci R, Garie KT, Harper G, Arbide I, et al. (2011) Can Interferon-Gamma or Interferon-Gamma-Induced-Protein-10 Differentiate Tuberculosis Infection and Disease in Children of High Endemic Areas? PLOS ONE 6(9): e23733. doi:10.1371/journal.pone.0023733

Editor: Laura Ellen Via, National Institute of Allergy and Infectious Disease, United States of America

Received: May 16, 2011; **Accepted:** July 23, 2011; **Published:** September 23, 2011

Copyright: © 2011 Yassin et al. This is an open-access article distributed under the terms of the Creative Commons Attribution License, which permits unrestricted use, distribution, and reproduction in any medium, provided the original author and source are credited.

Funding: This study was funded by a research grant awarded by the Thrasher Foundation, United States of America. The funders had no role in study design, data collection and analysis, decision to publish, or preparation of the manuscript.

Competing Interests: The authors have declared that no competing interests exist.

* E-mail: lcuevas@liv.ac.uk

Introduction

One of the most significant barriers for the appropriate management of Tuberculosis (TB) is the lack of suitable diagnostic tests. This problem is especially critical in settings where facilities are limited and other infections with overlapping clinical presentation are highly prevalent. Childhood TB presentation differs from adult TB as children experience more extra-pulmonary TB (EPTB) and lung involvement is frequently disseminated and without cavitations. Young children are unable to expectorate sputum and the specimens collected, such as gastric aspirates, are often paucibacillary and sometimes contain test inhibitors. Most diagnostics for TB thus perform poorly in children [1,2] and new tests or markers to diagnose TB in children are needed.

Interferon-gamma (INF γ) release assays (IGRAs) were developed in the last decade and are reported to have comparable sensitivity

and higher specificity than the Tuberculin Skin Test (TST) to identify latent TB infections (LTBI). Their performance however is less reliable in young children and in patients co-infected with the Human Immunodeficiency Virus (HIV) [3,4,5]. These assays are frequently used by clinicians to support a diagnosis of symptomatic TB [3,6,7], even though they cannot distinguish between LTBI and symptomatic disease. IGRAs are also increasingly used in high TB incidence settings, despite the limited information of their performance in these locations [8,9,10].

INF γ -induced protein 10 (IP10, also known as Chemokine (C-X-C motif) ligand 10 or CXCL10) is another biomarker recently reported to identify LTBI, which, when combined with IGRAs is said to increase the sensitivity of the assays [10]. IP10 expression is putatively less affected by HIV [11] and young age [12,13] and it is said to have potential to differentiate between LTBI and symptomatic infections [12,14].

We have thus conducted a study in Southern Ethiopia to describe INF γ and IP10 concentrations of children presenting with symptoms compatible with TB, asymptomatic children in contact with adults with smear-positive pulmonary TB (PTB) and asymptomatic community controls to explore whether INF γ or IP10 can distinguish between symptomatic and asymptomatic infections in a high TB burden setting and assess whether these markers could be used to support the diagnosis of children with symptoms of TB.

Materials and Methods

This was a cross sectional study of 1 to 15 year old children with symptoms suggestive of TB, children in contact with adults with smear-positive PTB and community controls without known contact with TB. The study was based in Awassa, in the Southern Region of Ethiopia, which has a population of over 15 million.

Children with symptoms of TB (called *symptomatics*) were enrolled consecutively at three health service providers (Awassa Health Centre, Bushullo Major Health Centre and University of Hawassa referral hospital). These included consecutive children with cough or fever for more than 2 weeks, night sweats, anorexia, weight loss, failure to thrive or non-specific symptoms in the presence of a history of contact with an adult with PTB. Children were invited to participate at the time of presentation to the clinic. All children underwent a clinical examination, chest X-rays, TST, three sputum or gastric lavage examinations and fine needle aspiration if enlarged lymph nodes were detected. All specimens were examined using light smear microscopy and culture on Lowenstein Jensen media and children were classified as having *confirmed* (positive smear microscopy or culture), *probable* (negative smear microscopy and culture, clinical and radiological findings consistent with TB, no improvement after a full course of antibiotics and the clinician initiating anti-TB treatment) or *unlikely* TB (children with alternative diagnosis or clinical improvement after a course of broad spectrum antibiotics).

In addition, *contact* children 1–15 year old residing with adults with smear-positive PTB (called *contacts*) were enrolled by identifying adults attending the same study centres with a history of cough for more than 2 weeks duration who had sputum smear-positive PTB. Once a smear-positive adult had been identified, study investigators inquired whether they had children at home and visited the households if the family resided within a 20 km radius from Awassa. All children living under a single roof who shared meal times with the adult were invited to participate after obtaining informed parental consent, unless they had previously received treatment for TB. All children who shared meals at home with the index cases were included, regardless of the duration of contact.

Community *controls* were defined as children residing in the community who did not have a known contact with adults with PTB. *Controls* were selected from Awassa and surrounding *kebeles*, which are the smallest administrative units of Ethiopia and comprise at least five hundred families or 3,500 to 5,000 inhabitants. A list of all villages and *kebeles* located within a 20 Km radius from Awassa was constructed. Controls were enrolled from villages adjacent to the villages where contacts resided. We enrolled more controls from rural villages than from urban areas as the risk of TB transmission from casual contact could be higher among urban residents. Households within a village were selected by spinning a pen in a street somewhere between the centre and the edge of the village and children were enrolled after obtaining informed parental consent. Households were excluded if the parent indicated the family had been in

contact with an adult with cough for more than 2 weeks duration in the previous 2 years or if a family member had received treatment for TB. All children were applied a TST using 2 units of Purified Protein Derivate (PPD, RT 23, Statens Serum Institute, Copenhagen, Denmark) using the Mantoux method and indurations were measured using the palpation method 48 to 72 hours later. TST results were graded as negative (<5 mm), intermediate (≥ 5 and <10 mm) and positive (≥ 10 mm). Any child with signs and symptoms suggestive of TB was investigated for disease activity and treated. *Contact* children <6 years old were offered INH prophylaxis for 6 months independently of their TST result, following Ethiopian TB Control Programme guidelines.

INF γ and IP10 concentrations were assayed using commercially available Enzyme Linked Immunoassay (ELISA) kits. INF γ was measured using the QuantiFERON-TB Gold In-Tube (QFT-IT) test (Cellestis, Victoria, Australia). Blood samples for QFT-IT were collected in 3 tubes, one containing the *Mycobacterium tuberculosis* ESAT-6, CFP10 and TB7-7 antigens; one with non-specific mytogen (phytohemagglutinin) to serve as positive control and one blank tube (nil) to serve as negative control. The three tubes were incubated at 37 $^{\circ}$ for 16–24 hours. Supernatant plasma was harvested after centrifugation to separate the blood cells and stored at -70°C . INF γ was measured using the manufacturer's ELISA in a Bio-Rad Plate reader (Model n 550) and read at 450 nm. IGRAs were classified as positive, negative or indeterminate using the manufacturer's software. IP10 concentrations were measured in the same supernatant using a Human IP10 ELISA Construction Kit (Antigenix America Inc, New York, NY). HIV infections were established using two blood-based ELISA methods.

Means and standard deviations (SD) or medians and inter-quartile ranges (IQR) were used to describe continuous variables. Parametric tests and non parametric tests were used to compare means and medians. The proportion of children in each study category with positive/negative tests compared using Chi-Square and Fisher's exact tests (if expected values were less than <5) and the agreement between TST and INF γ was described using Kappa statistics. IP10 concentrations were described using boxplots stratified by TST and INF γ concordance. The sample size calculations took into account the feasibility to visit about 200 households (of index cases) within the available time and resources and that each household had an average of two children <5 years old and it was expected that 200 children with signs and symptoms of TB would attend the health services. It was expected that 50% of the participants would be TST positive and 70% and 30%, of TST-positive children would be INF- γ positive and negative, respectively. It was also assumed that 30% and 70% of TST-negative children would be INF- γ positive and negative, respectively. This sample size would allow estimating the proportion of children with positive and negative INF- γ results by study group with a precision of $\pm 7\%$. Sample size calculation for the comparison of quantitative data (i.e. differences in IP-10 concentrations by study group) would have required prior information of the dispersion of IP-10 concentrations to estimate standard deviations or medians. As this information was not available, this study should be considered "exploratory", as it might not have enough power for the differences reported. The ability of IP10 to discriminate between children with and without TB infection or disease was evaluated using Receiver Operating Characteristic (ROC) curves using Prism 5 software (GraphPad PRISM, version 5). ROC curves were constructed with children with *confirmed* TB and controls and *contact* children with TST+/INF γ + and controls. Only controls with TST-/INF γ - results were included in the ROC analysis to select children unlikely to have TB infection. The area under the curve (AUC) for both *confirmed* and *contact* children were

compared to ascertain whether IP10 could discriminate between the two conditions. Statistical tests were considered significant if p values were <0.05.

The study protocol was approved by the Health Bureau of the Southern Region and the Research Ethics Committees of the Liverpool School of Tropical Medicine, Hawassa University and the Sciences and Technology Commission of Ethiopia. The study protocol was registered in the clintrials.gov clinical trials register (registration number NCT00456469)

Results

Eight hundred thirteen, 322 *symptomatic*, 335 *contact* and 156 *control* children were enrolled. The flow chart of the three groups is described in Figure 1. Twenty eight (8.7%) of 322 *symptomatic* children had *confirmed*, 136 (42.2%) *probable* and 131 (40.7%) *unlikely* TB and 27 were excluded because a definitive diagnosis was not reached or the child left the hospital before completing the investigations. The 335 *contact* children were recruited from 125 adult index cases who had “scanty” (18, 5.5%), “+” (188, 57%), “++” (109, 33%) or “+++” (15, 4.5%) smear microscopy grades in their sputum smear examination. In five *contacts* the smear result of the adult was not recorded. The median contact duration was 10 hours per week (range of 1 to 41 hours). The characteristics of the participants are shown in Table 1. Children with *probable* TB were more likely to be male (67.6%), while children in the other groups had similar proportions of males and females. Children had similar median age with symptomatic and control children having a median age of 6 years and contacts having a median of 8 years. Although the proportion of children reporting to have received BCG was similar across the groups, BCG scars were found less frequently in children with *confirmed* and *probable* TB (p<0.001). HIV was positive in none of the children with *confirmed* TB, 14 (10.9%) children with *probable* and 8 (6.5%) *unlikely* TB cases, 27 (8.2%) *contacts* and 3 (1.9%) *controls* (p = 0.005). The number of residents per household was higher among children with *symptoms*

of TB than among *contacts* and *controls* (means 8, 7.1 and 6.4 persons, respectively, p = 0.003). A significantly high proportion of children had lost one or both parents, with *symptomatic* and *contact* children being more likely to have lost a parent than *controls* (p = 0.01).

TST and INF γ results are shown in table 2. Children with *confirmed* and *probable* TB and *contacts* were more likely to have positive TST (TST+) (78.6%, 59.3% and 54.1%, respectively) than children with *unlikely* TB (28.7%) and *controls* (12.8%) (p<0.001). A high proportion of children had indeterminate INF γ tests, with children with *probable* and *unlikely* TB having a higher proportion of indeterminates than children with *confirmed* TB, *contacts* and *controls*. This problem was mostly due to failure of the positive control tube and was not associated with HIV infection (26/52 (50%) in HIV positive, compared to 256/641 (40%) in HIV-negative children, p = 0.2).

Children with *confirmed* TB (59.3%) and *contacts* (44.7%) were also more likely to have positive INF γ (INF γ +) than children with *probable* (37.6%) or *unlikely* TB (28.1%) and *controls* (13.1%) (p<0.001). Twenty two (78.6%) children with *confirmed*, 73 (53.7%) with *probable* and 68 (52%) with *unlikely* TB, 209 (62.4%) *contacts* and 114 (73.1%) *controls* had paired TST and INF γ results after exclusion of intermediate TST and indeterminate INF γ tests. Concordance between INF γ and TST varied across the groups. Children with *confirmed* and *probable* TB and *contacts* were more likely to have concordant positive TST and INF γ (15 (68.2%) of 22, 38 (52.1%) of 73 and 87 (41.6%) of 209, respectively), while children with *unlikely* TB and *controls* were more likely to have concordant negative TST and INF γ (29 (42.6%) of 68 and 86 (75.4%) of 114, respectively). Discordant TST+/INF γ - results were more frequent among children with *probable* TB (20.5%) and *contacts* (18.7%) and discordant TST-/INF γ + results were more frequent among children with *unlikely* TB (22.1%) and *controls* (11.5%). Agreement between TST and INF γ tests varied from 81% (k = 0.49) in children with *confirmed* TB, 73% (k = 0.40) in *probable* TB and 66% (k = 0.23) in *unlikely* TB, 70% (k = 0.39) in *contacts* and 81% (k = 0.24) in *controls*.

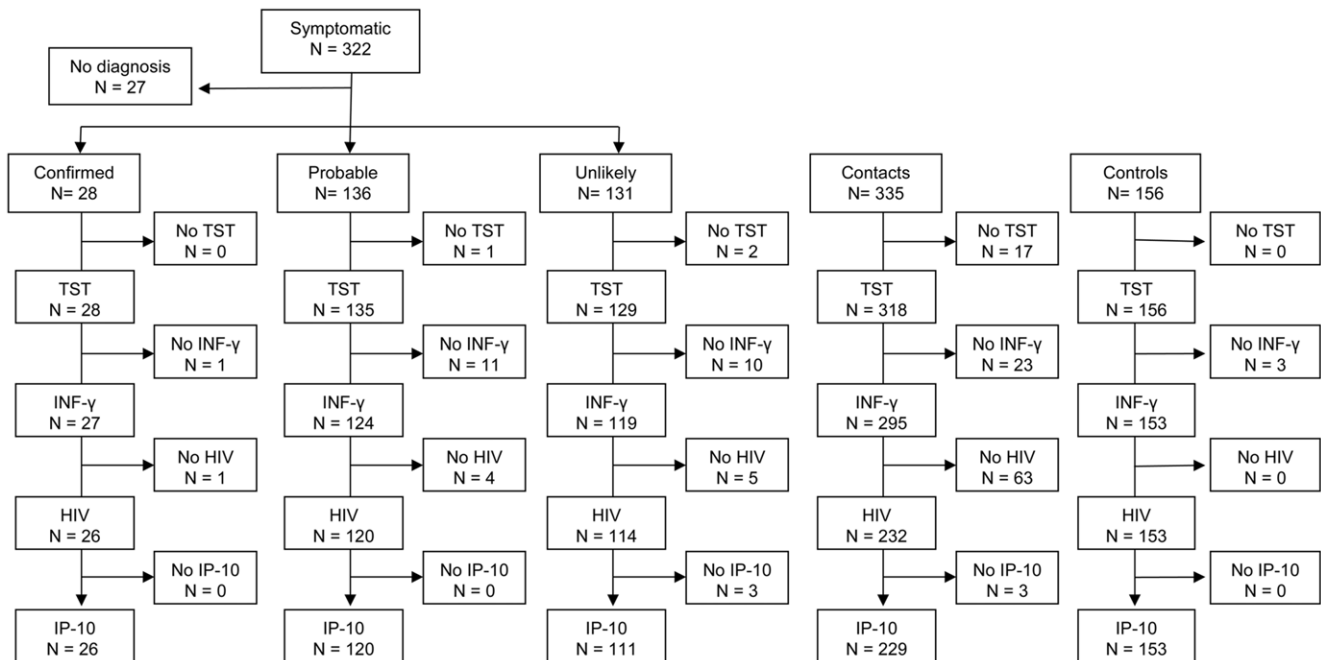


Figure 1. Flow chart of study participants.
doi:10.1371/journal.pone.0023733.g001

Table 1. Characteristics of the study children.

Variables	Symptomatic cases N = 295					p
	Confirmed TB N = 28	Probable TB N = 136	Unlikely TB N = 131	Contacts N = 335	Controls N = 156	
Male/Female (% Male)	13/15 (46.4)	92/44 (67.6)	67/64 (51.1)	168/166 (50.3)	79/77 (50.6)	
Median age (years)	8	5	7	8	6	<0.001
Range	1–15	1–15	1–15	1–15	1–15	
Received BCG	14 (63.6)	69 (63.3)	82 (70.7)	249 (74.3)	120 (76.9)	0.01
BCG scar present (%)	7 (25)	35 (25.7)	51 (38.9)	174 (51.9)	93 (59.6)	<0.001
Mean (SD) BCG scar (mm)	7.4 (3.2)	5.3 (1.8)	5.5 (2.1)	4.7 (2.4)	5.4 (2.5)	<0.001
Range	4–13	2–9	2–10	1–13	2–13	
HIV status, Pos/tested (%Pos)	0/27 (0)	14/114 (10.9)	8/116 (6.5)	27/231 (8.2)	3/153 (1.9)	0.005
Mean (SD) residents/household	8.3 (7.5)	8.9 (8.3)	7.2 (6.3)	7.1 (2.6)	6.4 (2.4)	0.002
Illiterate Father, N (%)	17 (70.8)	63 (55.8)	55 (48.7)	112 (38.6)	87 (60.4)	<0.001
Mother, N (%)	21 (84)	97 (77.6)	87 (68.5)	170 (52.3)	123 (78.8)	<0.001
Alive Father, N (%)	24 (85.7)	113 (83.1)	113 (86.3)	293 (88.3)	144 (92.3)	0.2
Mother, N (%)	25 (89.3)	124 (92.5)	128 (98.5)	325 (97.6)	156 (100)	<0.001
Both parents, N (%)	23 (82.1)	109 (81.3)	112 (80)	293 (88)	144 (92.3)	0.01

doi:10.1371/journal.pone.0023733.t001

IP10 concentrations are shown in Figure 2. Stimulated concentrations were much higher than non-stimulated concentrations in all groups ($p < 0.001$). Non-stimulated concentrations were highest in children with *confirmed TB* and lowest in *controls* (medians 1606 and 386 pg/ml). Stimulated concentrations were higher in children with *confirmed TB* and *contacts* (7812 and 5616 pg/ml, respectively) than in children with *probable* and *unlikely TB* (3680 and 2532 pg/ml, respectively, Kruskal-Wallis, $p = 0.02$). The difference of stimulated minus non-stimulated concentrations are shown in Table 3 by TST and INF γ results and study group. Among patients with positive TST, *symptomatic* and *contact* children had higher IP10 concentrations than *controls* ($p = 0.03$ and $p < 0.001$, respectively). Among children with negative TST, children with *confirmed TB* and *contacts* had higher IP10

concentrations than *controls* ($p = 0.02$ and $p = 0.001$, respectively). There was no difference in the IP10 concentrations across study groups among children with INF γ – results, while *contact* children with INF γ + results had the highest IP10 concentrations, followed by *symptomatic* and *control* children. Median (IQR) IP10 concentrations (stimulated minus non-stimulated) are shown in Figure 3 by TST and INF γ concordance. Children with concordant TST+/INF γ + had higher IP10 concentrations than children with TST–/INF γ – results in all study groups. Children with *confirmed TB* had high IP10 concentrations independently of the TST or INF γ result including two of the three children who had TST–/INF γ – results. In contrast, most *controls* had low IP10 concentrations with the exception of children with TST+/INF γ + results, who had high IP10 concentrations ($p = 0.04$). Children with HIV had similar

Table 2. TST and INF γ results and concordance among the tests by study group.

Variables	Symptomatic cases N = 295				
	Confirmed TB N = 28 (%)	Probable TB N = 136 (%)	Unlikely TB N = 131 (%)	Contacts N = 335 (%)	Controls N = 156 (%)
TST					
Positive	22 (78.6)	80 (59.3)	37 (28.7)	172 (54.1)	20 (12.8)
Intermediate	0	10 (7.4)	9 (7)	48 (15.1)	15 (9.6)
Negative	6 (21.4)	45 (33.3)	83 (64.3)	98 (30.8)	121 (77.6)
INF γ					
Positive	16 (59.3)	47 (37.6)	34 (28.1)	139 (44.7)	20 (13.1)
Indeterminate	5 (18.5)	47 (37.6)	44 (36.4)	52 (16.7)	25 (16.3)
Negative	6 (22.2)	31 (24.8)	43 (35.5)	120 (38.6)	108 (70.6)
TST/INF γ concordance					
TST+/INF γ +	15 (68.2)	38 (52.1)	14 (20.6)	87 (41.6)	6 (5.3)
TST+/INF γ –	3 (13.6)	15 (20.5)	10 (14.7)	39 (18.7)	10 (8.8)
TST–/INF γ +	1 (4.5)	5 (6.8)	15 (22.1)	24 (11.5)	12 (10.5)
TST–/INF γ –	3 (13.6)	15 (20.5)	29 (42.6)	59 (28.2)	86 (75.4)

doi:10.1371/journal.pone.0023733.t002

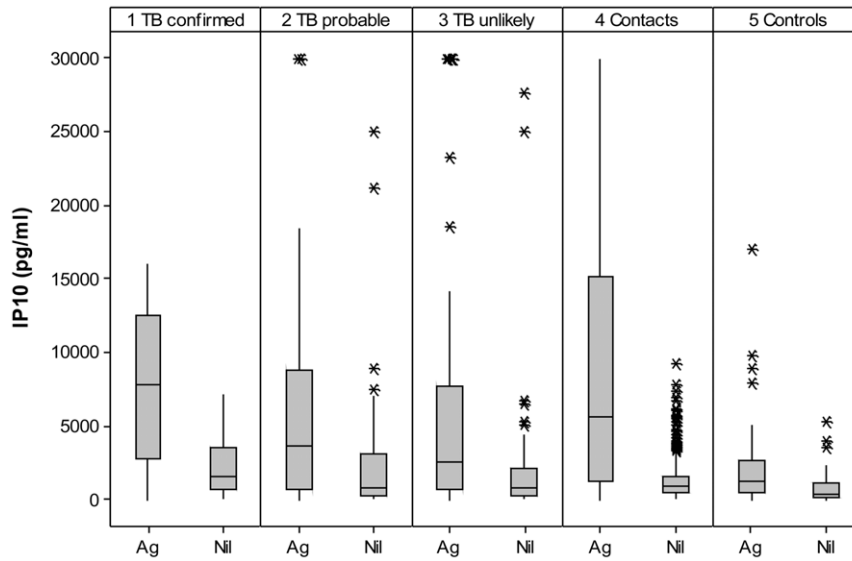


Figure 2. IP10 (pg/ml) concentrations in stimulated (Ag) and non-stimulated (Nil) samples by study group. Box plots describe medians, interquartile values and range. Asterisks depict outliers.
doi:10.1371/journal.pone.0023733.g002

IP10 concentrations than children without HIV across all study groups ($p > 0.1$) as shown in Figure 4.

IP10 concentrations of children with *confirmed* TB (N = 22, median IP10 7774 pg/ml) and *contacts* with TST+ and/or INF γ + (N = 148, median IP10 12490 pg/ml) where compared against *controls* with TST- and INF γ - (N = 86, median IP10 704 pg/ml) to construct the ROC curves, as shown in Figure 5. The ROC curves for both *confirmed* and *contact* children had the same shape, with cut-off points for best performance being 3128 pg/ml (sensitivity 81.8%, 95%CI = 59.7–94.8, specificity 96.5% 95%CI 90.1–99.3 and area under the curve (AUC) of 0.87%, 95%CI 0.75–0.99) for *confirmed* TB and 3022 pg/ml (sensitivity 77%, 95%CI 69.4–83.5%, specificity 96.5%, 95%CI 90.14–99.3%, and an AUC of 0.87, 95%CI 0.82–0.92) for *contacts*.

Discussion

Despite significant research efforts and technological breakthroughs to develop new diagnostics for TB [15], current diagnostic tests have lower sensitivity in children than in adults [1,2]. New diagnostics are needed to identify children with TB and to differentiate between latent and active TB in high incidence settings with limited resources.

Despite a large body of evidence of the performance characteristics of IGRAs for the diagnosis of LTBI and the identification of individuals infected during TB outbreaks in low TB incidence settings [6,16,17,18,19], there is a small number of studies assessing the IGRAS performance and their utility in high incidence countries [20,21,22]. The data presented here therefore represents a rare opportunity to compare TST, INF γ and IP10 in children with different degrees of exposure to infection and certainty of diagnosis residing in a high TB burden setting.

An important difference to reports from industrialized countries was the high proportion of QFT-IT tests with indeterminate results. Other studies from Africa have reported high rates of indeterminate results [23], and the reason for this high frequency remains unexplained. Our team has conducted similar studies in Nigeria [24], Nepal [8] and Yemen, took care to re-stock tests frequently and used high altitude control tubes provided by the manufacturer. Most indeterminate results however were due to failure of the positive control and further studies are needed to explore whether this was due to a loss of test integrity or an unidentified background morbidity such as parasitic, bacterial or viral infections [25]. The interpretation of the data is also hampered by the lack of reference standards for LTBI. The data however confirms that INF γ , as TST, are more likely to be

Table 3. Medians and interquartile ranges of IP10 concentrations (stimulated minus non-stimulated, in pg/ml) according to the TST and INF γ results by study group.

	TST			INF γ		
	Positive	Intermediate	Negative	Positive	Indeterminate	Negative
TB confirmed	5116 (2092–9624)	-	6788 (1672–11344)	8848 (4296–11414)	1672 (56–2092)	4560 (8–7496)
TB probable	2592 (64–8272)	768 (0–7424)	512 (84–3348)	7254 (3360–10548)	84 (0–604)	1288 (140–4548)
TB unlikely	2404 (326–8868)	2903 (692–8688)	674 (54–2558)	7594 (3328–12028)	548 (0–2208)	674 (120–1372)
Contacts	9304 (708–14536)	6078 (476–17632)	1486 (308–5544)	13800 (11128–17728)	348 (20–1932)	770 (196–3224)
Controls	528 (72–1392)	1124 (40–2320)	704 (116–1932)	1784 (364–2562)	180 (0–1184)	684 (144–1792)

doi:10.1371/journal.pone.0023733.t003

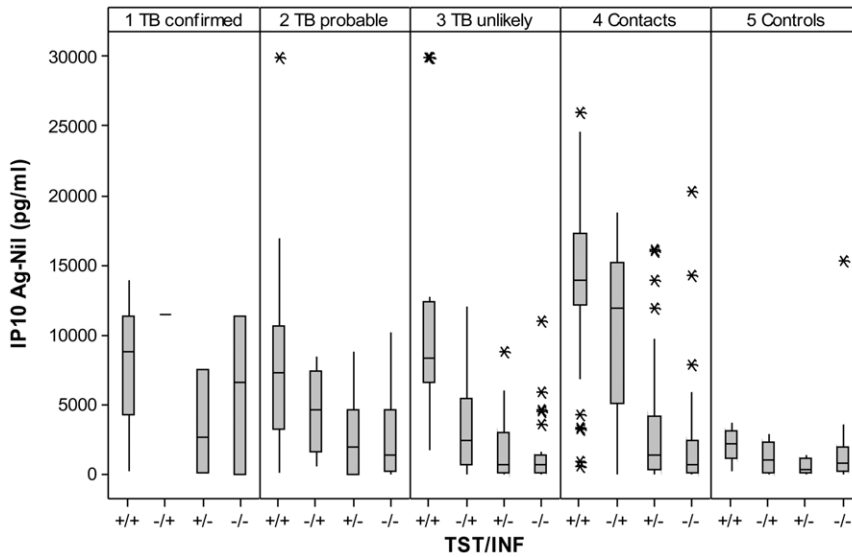


Figure 3. IP10 concentrations (stimulated minus non-stimulated) by TST and INF γ results and study group. Box plots describe medians, interquartile values and range. Asterisks depict outliers.
doi:10.1371/journal.pone.0023733.g003

positive in children with *contact* or *confirmed* TB than in *controls*. Neither INF γ nor TST differentiate between active and latent infections and thus their diagnostic value is restricted to the confirmation of a history of infection [3,19,26]. Given that a number of children had discrepant INF γ /TST results, cost and logistic constrains aside, the use of both TST and INF γ would identify a higher number of children with evidence of infection than a single test alone.

This study also describes IP10 concentrations of children at different risk of infection, and how these concentrations vary with TST, INF γ and HIV. IP10 is a cytokine expressed in response to IFN γ stimulation by cell types involved in delayed-type hypersensitivity [27], including lymphocytes, monocytes, endothelial cells and fibroblasts and is a chemo-attractant to monocytes and activated Th1 lymphocytes [28], promoting selective enhancement of Th1 responses and increasing IFN- γ

gene expression [29]. Recent studies have reported that IP10 expression is enhanced in individuals with active TB [30,31] and latent infection [12,13,32] and that combined with INF γ could increase the sensitivity of the IGRAS [9,12]. Although some reports have suggested that this marker could differentiate between active and latent infection [14,33], not all studies have replicated these observations [10,14].

IP-10 concentrations were higher among children with *confirmed* TB and *contacts*, with the highest concentrations observed in *contact* children, which is in agreement with recently recent reports from low incidence settings [12,14]. IP10 concentrations were generally higher among children with INF γ + results and there was no difference in the median concentrations of children with and without HIV infection. This latter characteristic could have practical applications, increasing the sensitivity of INF γ based tests in areas of high HIV prevalence.

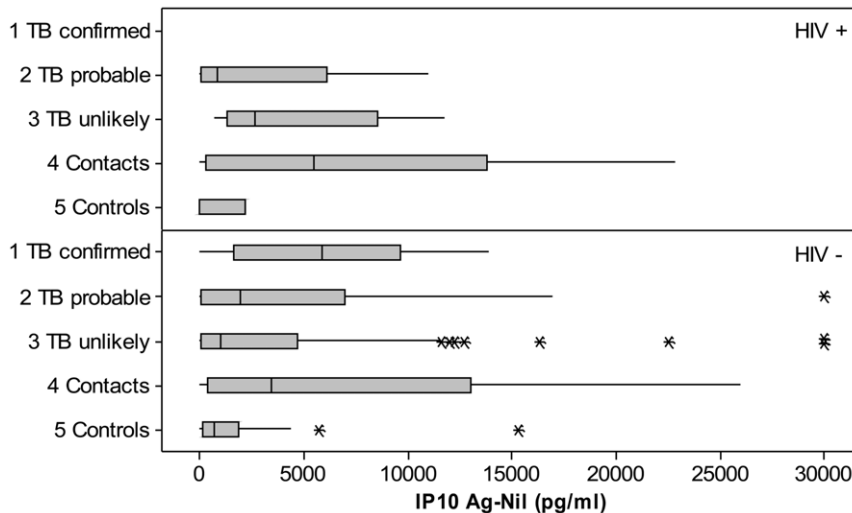


Figure 4. IP10 concentrations (stimulated minus non-stimulated) by HIV status and study group. Box plots describe medians, interquartile values and range. Asterisks depict outliers.
doi:10.1371/journal.pone.0023733.g004

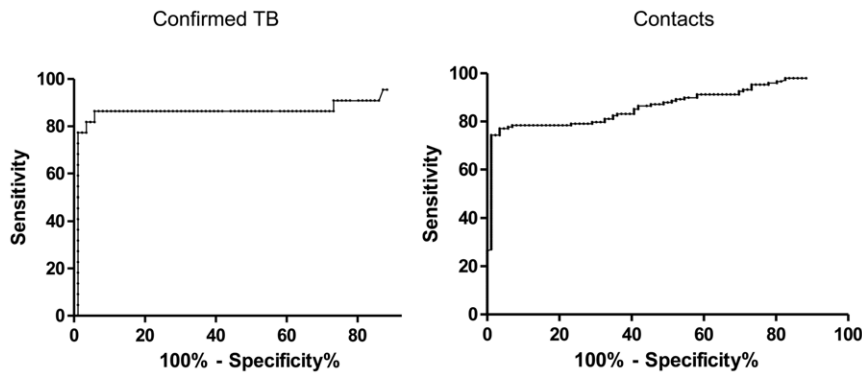


Figure 5. Receiver Operating Characteristic (ROC) curve of IP10 in children with confirmed TB and contacts, when compared to community controls with TST- and INF γ results.

doi:10.1371/journal.pone.0023733.g005

Interestingly, non-stimulated IP10 concentrations were higher in children with *confirmed* TB, resulting in a smaller difference between stimulated and non-stimulated concentrations. Although non-specific IP10 increases have been described in acute and chronic diseases other than TB [34,35,36,37], these findings suggest that IP10 expression may vary during the course of disease progression, maybe with higher expression during the primary stages of granuloma formation, which involves the recruitment of monocytes and Th1 gammadelta T-cells [38] and lower expression in the presence of progressive unchecked infections, in the presence of immunosuppression, as described for INF γ .

The ROC curve analysis however suggested that the cut offs with best test performance to differentiate children with *confirmed* TB and *controls* was similar to the cut offs to differentiate *contacts* and *controls*, with similar AUC. Thus, similar to INF γ and TST, IP10 differentiated between infected and non-infected children but is unable to differentiate between latent and active TB. Data from children residing in a high burden areas is scarce and the sensitivity of 81.8% obtained is lower than reported from Indian adults [10] in Chennai (92.5%, 95%CI: 88.6%–96.4%), which also reported a lower specificity (48%). Ruhwald et. al. [39] selected a cut off of 673 pg/ml for Danish adolescents and adults and Lighter et. al [12] selected a cut off of 732 pg/ml for USA children. Applying Ruhwald et. al., cut off to Ethiopia would increase the sensitivity to 86% and reduce the specificity to 48%, which is similar to those reported by Kabeer et al in India, suggesting that there is more agreement of test performance across settings than suggested by these reports.

This study therefore describes INF γ and IP10 expression in children at different risk of infection and disease in a country with a high incidence of TB. Children with *probable* TB had different tests results patterns than children with *confirmed* TB as the former

had more TST but less INF γ positive results, thus reflecting the heterogeneity of this group and underscoring the importance of using clear reporting group categories based on the certainty of diagnosis to facilitate the interpretation of data.

Our findings therefore demonstrate that both INF γ and IP10 identify children with latent and active TB. IP10 is less affected by the presence of HIV co-infection than INF γ and has the potential to increase the sensitivity of the IGRAS when used in combination with INF γ . INF γ , IP10 and TST however are unable to differentiate between latent and active disease.

Longitudinal studies to describe the natural variation of these markers over time and their ability to identify children with latent infections at risk of disease progression or children at risk of poor treatment response after initiation of anti-TB therapy are needed. However, given the high cost of the IGRAS and the high proportion of indeterminate results obtained, control programmes should refrain from incorporating these tests until clear advantages over the TST are demonstrated.

Acknowledgments

We are grateful for the Southern Region Health Bureau’s support for this study and the research assistants (Girum Asnake, Habiba Jemal, Tadesse Mamo and Koratu) and laboratory technicians (Tesfaye Tusuna and Kedir Yesuf) who collected the data. Our thanks go to all children and parents participating in the study.

Author Contributions

Conceived and designed the experiments: YM LC. Performed the experiments: YM GH AB NA. Analyzed the data: RP YM LC. Contributed reagents/materials/analysis tools: YM. Wrote the paper: YM LC RP. Coordinated field work and data processing: IA KG MA ZK.

References

- Zar HJ, Hanslo D, Apolles P, Swinger G, Hussey G (2005) Induced sputum versus gastric lavage for microbiological confirmation of pulmonary tuberculosis in infants and young children: a prospective study. *Lancet* 365: 130–134.
- Marais BJ, Pai M (2007) Recent advances in the diagnosis of childhood tuberculosis. *Arch Dis Child* 92: 446–452.
- Wallis RS, Pai M, Menzies D, Doherty TM, Walzl G, et al. (2010) Biomarkers and diagnostics for tuberculosis: progress, needs, and translation into practice. *Lancet* 375: 1920–1937.
- Bamford AR, Crook AM, Clark JE, Nademi Z, Dixon G, et al. (2010) Comparison of interferon- γ release assays and tuberculin skin test in predicting active tuberculosis (TB) in children in the UK: a paediatric TB network study. *Arch Dis Child* 95: 180–186.
- Detjen AK, Keil T, Roll S, Hauer B, Mauch H, et al. (2007) Interferon-gamma release assays improve the diagnosis of tuberculosis and nontuberculous mycobacterial disease in children in a country with a low incidence of tuberculosis. *Clin Infect Dis* 45: 322–328.
- Menzies D, Pai M, Comstock G (2007) Meta-analysis: new tests for the diagnosis of latent tuberculosis infection: areas of uncertainty and recommendations for research. *Ann Intern Med* 146: 340–354.
- Zar HJ, Connell TG, Nicol M (2010) Diagnosis of pulmonary tuberculosis in children: new advances. *Expert Rev Anti Infect Ther* 8: 277–288.
- Petrucci R, Abu Amer N, Gurgel RQ, Sherchand JB, Doria L, et al. (2008) Interferon gamma, interferon-gamma-induced-protein 10, and tuberculin responses of children at high risk of tuberculosis infection. *Pediatr Infect Dis J* 27: 1073–1077.
- Ruhwald M, Petersen J, Kofoed K, Nakaoka H, Cuevas LE, et al. (2008) Improving T-cell assays for the diagnosis of latent TB infection: potential of a diagnostic test based on IP-10. *PLoS One* 3: e2858.

10. Syed Ahamed Kabeer B, Raman B, Thomas A, Perumal V, Raja A (2010) Role of QuantiFERON-TB gold, interferon gamma inducible protein-10 and tuberculin skin test in active tuberculosis diagnosis. *PLoS One* 5: e9051.
11. Juffermans NP, Verbon A, van Deventer SJ, van Deutekom H, Belisle JT, et al. (1999) Elevated chemokine concentrations in sera of human immunodeficiency virus (HIV)-seropositive and HIV-seronegative patients with tuberculosis: a possible role for mycobacterial lipoarabinomannan. *Infect Immun* 67: 4295–4297.
12. Lighter J, Rigaud M, Huie M, Peng CH, Pollack H (2009) Chemokine IP-10: an adjunct marker for latent tuberculosis infection in children. *Int J Tuberc Lung Dis* 13: 731–736.
13. Ruhwald M, Ravn P (2009) Biomarkers of latent TB infection. *Expert Rev Respir Med* 3: 387–401.
14. Whittaker E, Gordon A, Kampmann B (2008) Is IP-10 a better biomarker for active and latent tuberculosis in children than IFN γ ? *PLoS One* 3: e3901.
15. Boehme CC, Nabeta P, Hillemann D, Nicol MP, Shenai S, et al. (2010) Rapid molecular detection of tuberculosis and rifampin resistance. *N Engl J Med* 363: 1005–1015.
16. Ewer K, Deeks J, Alvarez L, Bryant G, Waller S, et al. (2003) Comparison of T-cell-based assay with tuberculin skin test for diagnosis of Mycobacterium tuberculosis infection in a school tuberculosis outbreak. *Lancet* 361: 1168–1173.
17. Higuchi K, Kondo S, Wada M, Hayashi S, Ootsuka G, et al. (2009) Contact investigation in a primary school using a whole blood interferon-gamma assay. *J Infect* 58: 352–357.
18. Pai M, Kalantri S, Dheda K (2006) New tools and emerging technologies for the diagnosis of tuberculosis: part I. Latent tuberculosis. *Expert Rev Mol Diagn* 6: 413–422.
19. Chang KC, Leung CC (2010) Systematic review of interferon-gamma release assays in tuberculosis: focus on likelihood ratios. *Thorax* 65: 271–276.
20. Dheda K, van Zyl Smit R, Badri M, Pai M (2009) T-cell interferon-gamma release assays for the rapid immunodiagnosis of tuberculosis: clinical utility in high-burden vs. low-burden settings. *Curr Opin Pulm Med* 15: 188–200.
21. Barth RE, Mudrikova T, Hoepelman AI (2008) Interferon-gamma release assays (IGRAs) in high-endemic settings: could they play a role in optimizing global TB diagnostics? Evaluating the possibilities of using IGRAs to diagnose active TB in a rural African setting. *Int J Infect Dis* 12: e1–6.
22. Hill PC, Jackson-Sillah DJ, Fox A, Brookes RH, de Jong BC, et al. (2008) Incidence of tuberculosis and the predictive value of ELISPOT and Mantoux tests in Gambian case contacts. *PLoS One* 3: e1379.
23. Seshadri C, Uiso LO, Ostermann J, Diefenthal H, Shao HJ, et al. (2008) Low sensitivity of T-cell based detection of tuberculosis among HIV co-infected Tanzanian in-patients. *East Afr Med J* 85: 442–449.
24. Nakaoka H, Lawson L, Squire SB, Coulter B, Ravn P, et al. (2006) Risk for tuberculosis among children. *Emerg Infect Dis* 12: 1383–1388.
25. Shanaube K, De Haas P, Schaap A, Moyo M, Kosloff B, et al. (2010) Intra-assay reliability and robustness of QuantiFERON(R)-TB Gold In-Tube test in Zambia. *Int J Tuberc Lung Dis* 14: 828–833.
26. Bianchi L, Galli L, Moriondo M, Veneruso G, Becciolini L, et al. (2009) Interferon-gamma release assay improves the diagnosis of tuberculosis in children. *Pediatr Infect Dis J* 28: 510–514.
27. Kaplan G, Luster AD, Hancock G, Cohn ZA (1987) The expression of a gamma interferon-induced protein (IP-10) in delayed immune responses in human skin. *J Exp Med* 166: 1098–1108.
28. Farber JM (1997) Mig and IP-10: CXC chemokines that target lymphocytes. *J Leukoc Biol* 61: 246–257.
29. Moser B, Loetscher P (2001) Lymphocyte traffic control by chemokines. *Nat Immunol* 2: 123–128.
30. Ruhwald M, Bjerregaard-Andersen M, Rabna P, Kofoed K, Eugen-Olsen J, et al. (2007) CXCL10/IP-10 release is induced by incubation of whole blood from tuberculosis patients with ESAT-6, CFP10 and TB7.7. *Microbes Infect* 9: 806–812.
31. Azzurri A, Sow OY, Amedei A, Bah B, Diallo S, et al. (2005) IFN-gamma-inducible protein 10 and pentraxin 3 plasma levels are tools for monitoring inflammation and disease activity in Mycobacterium tuberculosis infection. *Microbes Infect* 7: 1–8.
32. Ruhwald M, Bjerregaard-Andersen M, Rabna P, Eugen-Olsen J, Ravn P (2009) IP-10, MCP-1, MCP-2, MCP-3, and IL-1RA hold promise as biomarkers for infection with M. tuberculosis in a whole blood based T-cell assay. *BMC Res Notes* 2: 19.
33. Dheda K, Van-Zyl Smit RN, Sechi LA, Badri M, Meldau R, et al. (2009) Clinical diagnostic utility of IP-10 and LAM antigen levels for the diagnosis of tuberculous pleural effusions in a high burden setting. *PLoS One* 4: e4689.
34. Korpi-Steiner NL, Bates ME, Lee WM, Hall DJ, Bertics PJ (2006) Human rhinovirus induces robust IP-10 release by monocytic cells, which is independent of viral replication but linked to type I interferon receptor ligation and STAT1 activation. *J Leukoc Biol* 80: 1364–1374.
35. Dhillon NK, Peng F, Ransohoff RM, Buch S (2007) PDGF synergistically enhances IFN-gamma-induced expression of CXCL10 in blood-derived macrophages: implications for HIV dementia. *J Immunol* 179: 2722–2730.
36. Jain V, Armah HB, Tongren JE, Ned RM, Wilson NO, et al. (2008) Plasma IP-10, apoptotic and angiogenic factors associated with fatal cerebral malaria in India. *Malar J* 7: 83.
37. Antonelli A, Ferri C, Fallahi P, Ferrari SM, Sebastiani M, et al. (2008) High values of CXCL10 serum levels in mixed cryoglobulinemia associated with hepatitis C infection. *Am J Gastroenterol* 103: 2488–2494.
38. Ferrero E, Biswas P, Vettoretto K, Ferrarini M, Ugucioni M, et al. (2003) Macrophages exposed to Mycobacterium tuberculosis release chemokines able to recruit selected leucocyte subpopulations: focus on gammadelta cells. *Immunology* 108: 365–374.
39. Ruhwald M, Bodmer T, Maier C, Jepsen M, Haaland MB, et al. (2008) Evaluating the potential of IP-10 and MCP-2 as biomarkers for the diagnosis of tuberculosis. *Eur Respir J* 32: 1607–1615.