

RESEARCH ARTICLE

# Fitness and Phenotypic Characterization of Miltefosine-Resistant *Leishmania major*

Kimbra G. Turner, Paola Vacchina, Maricela Robles-Murguía, Mariha Wadsworth, Mary Ann McDowell, Miguel A. Morales\*

Eck Institute for Global Health, Department of Biological Sciences, University of Notre Dame, Notre Dame, Indiana, United States of America

\* [miguel.morales@nd.edu](mailto:miguel.morales@nd.edu)



 OPEN ACCESS

**Citation:** Turner KG, Vacchina P, Robles-Murguía M, Wadsworth M, McDowell MA, Morales MA (2015) Fitness and Phenotypic Characterization of Miltefosine-Resistant *Leishmania major*. PLoS Negl Trop Dis 9(7): e0003948. doi:10.1371/journal.pntd.0003948

**Editor:** Louis Maes, University of Antwerp, BELGIUM

**Received:** April 21, 2015

**Accepted:** July 3, 2015

**Published:** July 31, 2015

**Copyright:** © 2015 Turner et al. This is an open access article distributed under the terms of the [Creative Commons Attribution License](https://creativecommons.org/licenses/by/4.0/), which permits unrestricted use, distribution, and reproduction in any medium, provided the original author and source are credited.

**Data Availability Statement:** All relevant data are within the paper and its Supporting Information files.

**Funding:** This work was supported by the Eck Institute for Global Health and capitalization funds from the University of Notre Dame. The funders had no role in study design, data collection and analysis, decision to publish, or preparation of the manuscript.

**Competing Interests:** The authors have declared that no competing interests exist.

## Abstract

Trypanosomatid parasites of the genus *Leishmania* are the causative agents of leishmaniasis, a neglected tropical disease with several clinical manifestations. *Leishmania major* is the causative agent of cutaneous leishmaniasis (CL), which is largely characterized by ulcerative lesions appearing on the skin. Current treatments of leishmaniasis include pentavalent antimonials and amphotericin B, however, the toxic side effects of these drugs and difficulty with distribution makes these options less than ideal. Miltefosine (MIL) is the first oral treatment available for leishmaniasis. Originally developed for cancer chemotherapy, the mechanism of action of MIL in *Leishmania* spp. is largely unknown. While treatment with MIL has proven effective, higher tolerance to the drug has been observed, and resistance is easily developed in an *in vitro* environment. Utilizing stepwise selection we generated MIL-resistant cultures of *L. major* and characterized the fitness of MIL-resistant *L. major*. Resistant parasites proliferate at a comparable rate to the wild-type (WT) and exhibit similar apoptotic responses. As expected, MIL-resistant parasites demonstrate decreased susceptibility to MIL, which reduces after the drug is withdrawn from culture. Our data demonstrate metacyclogenesis is elevated in MIL-resistant *L. major*, albeit these parasites display attenuated *in vitro* and *in vivo* virulence and standard survival rates in the natural sandfly vector, indicating that development of experimental resistance to miltefosine does not lead to an increased competitive fitness in *L. major*.

## Author Summary

Cutaneous Leishmaniasis (CL) is characterized by the appearance of ulcerative lesions on the skin, and results from infection with trypanosomatid parasites such as *Leishmania major*. Current treatments for CL are expensive and have a wide range of toxic side effects of variable severity. Miltefosine, a recently introduced treatment option, is the first oral drug for leishmaniasis treatment. Although widespread clinical resistance has not yet been established, miltefosine-resistant parasite populations are easily created in a laboratory environment. Through step-wise selection, we have created populations of *L. major* resistant to miltefosine. These resistant parasites grow at a similar rate to miltefosine-sensitive

parasites and exhibit similar stress responses. Accordingly, miltefosine-resistant parasites display a decrease in tolerance when selective pressure of MIL is withdrawn from the population. There is no conferred resistance to treatment with other antileishmanial agents, though increased sensitivity to alternative treatments is observed in some instances. *Leishmania* undergoes a complex life cycle including the differentiation to highly infective forms, in a process termed metacyclogenesis. Experimental resistance to miltefosine increases metacyclogenesis in *L. major*, however resistant parasites display a lower fitness than their sensitive counterparts, as judged by their attenuated virulence *in vitro* and *in vivo*.

## Introduction

Leishmaniasis is caused by protozoan parasites of the genus *Leishmania*, and presents as a variety of clinical manifestations ranging from lesions on the skin to disseminated visceral infections [1]. Cutaneous leishmaniasis (CL) often results in self-resolving lesions, whereas visceral leishmaniasis (VL) is habitually fatal when left untreated. With an annual incidence of 2 million cases and a prevalence of more than 12 million, leishmaniasis is responsible for 70,000 deaths annually [2]. 88 countries have reported infection, resulting in 350 million individuals at risk for infection and an estimated 2.4 million disability-adjusted life years (DALYs) [2]. These statistics are grossly underestimated due to misdiagnosis and insufficient disease surveillance systems.

*Leishmania* species have a digenetic life cycle including both extracellular promastigote and obligate intracellular amastigote forms. Extracellular flagellated promastigotes reside in the midgut of the phlebotomine sandfly vector. Following infection in the mammalian host, promastigotes are engulfed by macrophages where they differentiate into non-motile amastigotes in the phagolysosome. This differentiation is triggered by environmental cues, mainly pH and temperature [3]. Current antileishmanial drugs include pentavalent antimony, amphotericin B, paromomycin, pentamidine, and miltefosine; most are toxic and expensive. To date, no successful vaccine exists, and the few antileishmanial drugs mentioned either risk becoming ineffective due to emerging resistance, or are limited in their use due to cost and parental administration [4, 5]. Miltefosine (MIL) is an alkylphosphocholine drug with demonstrated activity against various parasite species and cancer cells, as well some pathogenic bacteria and fungi [6]. Since its registration in 2002, miltefosine remains the only oral agent used for the treatment of all types of leishmaniasis. The U.S. Food and Drug Administration (FDA) recently (March 2014) approved Impavido (miltefosine) for the treatment of cutaneous, visceral and muco-cutaneous leishmaniasis. While the mechanism of action of MIL is not understood in its entirety, several studies have pointed at alterations in phospholipid metabolism, impairment of bioenergetic metabolism, and ultimately the induction of apoptosis as potential modes of actions [7–10]. Knowledge of experimental MIL resistance in *Leishmania* is limited to defects in drug internalization (defective inward translocation of MIL) and increased drug efflux [11]. Previous investigations in *L. donovani* have revealed the presence of several key point mutations in the P-type ATPase dubbed the LdMT (*L. donovani* miltefosine transporter) [12]. However, subsequent studies demonstrated that the LdMT alone was not sufficient to facilitate translocation, leading to the identification of the  $\beta$ -subunit LdRos3 and its importance to the function of the LdMT [13]. Mutations in the LdMT and Ros3 contribute to the MIL-resistant phenotype by significantly decreasing MIL uptake. Specifically, T420N and L856P mutations in the LdMT contributed to significantly decreased MIL uptake [12]. Other mutations

identified in MIL-resistant *L. donovani* include W210 (LdMT) and M1 (LdRos3) [14]. Sequencing of the entire miltefosine transporter was performed in both *L. major* and *L. infantum*, and all identified sequence mutations differed from those previously detailed in *L. donovani* (L856P, T420N, W210, and M1) [15]. In the same study, no mutations were observed in the  $\beta$ -subunit Ros3 in any of the MIL-resistant populations. Widespread clinical resistance has not yet been demonstrated, nonetheless two *L. infantum* isolates from HIV co-infected patients have been reported to exhibit MIL resistance [16, 17]. The analysis of clinical isolates from patients infected with *L. donovani* that had relapsed to standard MIL therapeutic regimes demonstrated that the recovered parasites were significantly more tolerant to MIL [14]. None of the resistance markers i.e. point mutations aforementioned were found in the isolates. In the absence of a definitive mechanism of miltefosine resistance, the concept of fitness or “proficiency” of drug resistant pathogens is becoming more relevant and how the acquisition of resistance may impact the life cycle of the parasite, particularly its capacity to survive both in the insect and mammalian hosts and thus its ability to compete with wild type (sensitive) parasites [18–20]. Most of these studies are focused on antimony resistance in *L. donovani* and more recently, drug combinations [21]. Here we present the characterization and fitness of clonal lines of *L. major* that have experimentally acquired resistance to miltefosine, with relevance to survival in the mammalian host and phlebotomine vector.

## Materials and Methods

### Ethics statement

All studies using vertebrate animals were conducted in accordance with the U. S. Public Health Service Policy on Humane Care and Use of Laboratory Animals and followed the standards as described in the *Guide for the Care and Use of Laboratory Animals*. Per these standards, all vertebrate animal studies were conducted following review by the University of Notre Dame Institutional Animal Care and Use Committee under protocol #15–047 (approved October 16, 2012). The University of Notre Dame is credited through the Animal Welfare Assurance #A3093-01.

### Cell culture conditions

*Leishmania major* strain Friedlin V1 (MHOM/JL/80/Friedlin) promastigotes were cultured at 27°C in M199 medium (medium 199 (CellGro) supplemented with 10% heat-inactivated fetal bovine serum (FBS), 20 mM HEPES, 10 mM adenine, penicillin/streptomycin, hemin, biotin, L-glutamine, and 7.5% NaHCO<sub>3</sub>) and passaged every 3–4 days. Macrophages (RAW264.7 cell line) were cultured at 37°C with 5% CO<sub>2</sub> in RPMI supplemented with 10% heat-inactivated FBS, penicillin/streptomycin, and L-glutamine, and passaged every 2–3 days.

### Generation of MIL-resistant populations

MIL-resistant cultures of *L. major* were generated using step-wise selection. Cultures were passaged every 3–4 days at an initial concentration of  $5 \times 10^5$  promastigotes/mL. Increasing concentrations of MIL (Sigma) were introduced to the cultures beginning with 2.5  $\mu$ M MIL and successively to 5, 8, 10, 15, 20, 30, and 40  $\mu$ M MIL. Cultures were exposed to an increased concentration of MIL when growth rates were equivalent to the growth rate of the wild-type (WT). To account for clonal variation, 2 clones of each resistant line were generated by plating in M199 plates as previously described [22]. Clones 1 and 2 were simultaneously maintained.

Growth rates were measured for each set of resistant populations and compared with the WT strain. Parasites were counted at an initial concentration of  $5 \times 10^5$  parasites/mL and growth was measured daily using a Neubauer chamber until the population reached stationary phase.

To further assess stability and fitness, two fluorescent FACS-based apoptotic markers were used to evaluate MIL-selection. Membrane permeability was assessed using the kit YO-PRO1 (Invitrogen) according to manufacturer's recommendations. Briefly, samples were pelleted and washed in 1X M199 complete media. Following the wash, samples were resuspended in 1X M199 complete media and YO-PRO (Invitrogen) and Propidium Iodide (Invitrogen) were added and incubated for 20 minutes. Exposure of phosphatidylserine (PS) residues was investigated with Annexin-V-FITC (Miltenyi Biotec) following manufacturer's instructions. Analyses were performed in a Beckman Coulter FC500 Flow Cytometer.

### Assessment of drug resistance

In order to assess the MIL-resistance achieved, the half-maximal effective concentration,  $EC_{50}$ , was performed using the resazurin-based CellTiter-Blue (Promega) method as previously described [23]. Cultures were counted using a Neubauer chamber.  $1 \times 10^6$  parasites/mL were incubated for 48 hours at 27°C in M199 medium (CellGro) and appropriate concentrations of MIL (Sigma), pentamidine isethionate (Sigma), amphotericin B (Sigma), potassium antimony (III) tartrate hydrate (Sigma) and paromomycin sulfate salt (Sigma), were used in order to accurately evaluate the resistance. Solvent (DMSO) controls were used where appropriate. Hundred  $\mu$ L from each well were incubated at 37°C at 5%  $CO_2$  for 4 hours with 20  $\mu$ L Cell Titer Blue (Promega). Fifty  $\mu$ L of 10% SDS were added to each well, and fluorescence was measured (555 nm  $\lambda_{exc}$ /580 nm  $\lambda_{em}$ ) using a Typhoon FLA-9500 laser scanner (GE Healthcare) and analyzed with ImageQuant TL software (GE Healthcare).  $EC_{50}$  values were calculated by non-linear regression analysis using SigmaPlot (v 11.0). All experiments were done in triplicate with appropriate controls in each case.

### Partial sequencing of LmMT and LmRos3

Both WT and MIL-resistant cultures were sequenced for previously described point mutations in the *L. donovani* MT (T421N, L856P, W210\*) and Ros3 subunit (M1) [14] and in *L. major* (G852D, M547del) [15]. DNA was amplified with primers outlined in S1 Table. PCR product sizes ranging from 149–277 bp were purified using the GeneJET Gel Extraction Kit (Thermo) and sent to the Genomics Core Facility at the University of Notre Dame for sequencing. Sequences were analyzed using ClustalX [24].

### RNA extraction and real-time PCR analysis

Total RNA was isolated from logarithmic and stationary phase promastigotes using Trizol Reagent (Invitrogen), reverse transcribed with SuperScript II Reverse Transcriptase (Invitrogen) after deoxyribonuclease I treatment with TURBO DNA-free Kit (Ambion, Invitrogen). All qRT-PCR reactions were performed in triplicate using SYBR Green (Invitrogen) fluorescence for quantification in a 7500 Fast Real-Time PCR System (Applied Biosystems). The  $\Delta\Delta CT$  method was used to determine relative changes in gene expression [25] with data presented as fold change in the target gene expression in *L. major* MIL-resistant cultures normalized to internal control genes GAPDH and SOD, using *L. major* WT as a reference strain. Standard PCR conditions were: 95°C for 10 min, followed by 40 cycles of 94°C for 1 min, 60°C for 1 min, and 72°C for 2 min. Primer design was based on nucleotide sequences of *L. infantum* genes coding for the *L. donovani* MT, *L. donovani* Ros3, SHERP, GAPDH and SOD genes. All experiments were performed in triplicate with appropriate controls included in each case.

## Metacyclogenesis

Two different methods were utilized to assess metacyclogenesis as described previously [26]. Briefly, a Ficoll (Sigma) gradient was set-up using 4 mL of 20% Ficoll overlaid with 4 mL 10% Ficoll in M199 medium without FBS and 4 mL of 5-day stationary-phase culture in M199 medium laid on top. The step gradients were centrifuged at room temperature for 10 min at 1300 x g without braking or acceleration to separate out the layers. The top two layers of the gradient were recovered and the percentage of metacyclic parasites was determined by counting in a Neubauer chamber before and after the enrichment procedure. For agglutination analysis, 5-day stationary-phase cultures were pelleted and resuspended in 1 mL M199 medium (CellGro) and 10  $\mu$ L peanut agglutinin (50  $\mu$ g/mL) (Sigma) was added. After 30 minutes of room temperature incubation, samples were centrifuged at 200g for 10 minutes. The supernatant was recovered and the percentage of metacyclic parasites was determined by counting in a Neubauer chamber before and after the enrichment procedure. All experiments were done in triplicate.

## Macrophage infections

RAW264.7 murine macrophage cells were counted using Trypan Blue (Amresco) and plated at  $5 \times 10^5$  cells/well in 12-well plates. Infections were performed with metacyclic parasites isolated as described above. Infections were carried out at a multiplicity of infection (MOI) of 10 parasites per macrophage. Free parasites were removed by one wash with RPMI without FCS 6 h post-infection and samples collected at 6, 12, 24 and 48 h post-infection by DiffQuick staining of cytospin whole-cell preparations and visualized with light microscopy. All infections were done in triplicate and at least two independent experiments were performed.

## Sandfly infections

*Phlebotomus papatasi* (Origin: Turkey, PPTK) was reared in the Department of Biological Sciences, University of Notre Dame, according to conditions previously described [27]. For the experiment, three-to-five day old female sandflies were used. Two groups, one experimental and one control, each containing 50 female and 10 male sandflies were placed in a 500 mL plastic container ( $\phi = 6.3$  cm, height = 6.5 cm) (Thermo-Nalgene) covered with a piece of nylon mesh (0.5mm). Blood feeding was performed through a young chicken skin membrane attached to a feeding device. Prior to sandfly feeding, fresh mouse blood was heat inactivated for 30 min at 56°C. Infection of sandflies with *L. major* FVI strain promastigotes was done by addition of  $1 \times 10^7$  logarithmic parasites/mL into the blood meal. Sixteen to twenty four hours after blood feeding, the presence or absence of blood in the sandfly digestive tract was verified by anesthetizing flies with CO<sub>2</sub> and observing the midgut distension under a stereomicroscope (Carl Zeiss). One week post-blood meal, midguts of blood-fed sandflies were individually dissected and thoroughly homogenized in 30  $\mu$ L PBS buffer (pH 7.4) using a hand held tissue homogenizer and pestle. Parasites were counted in a Neubauer chamber.

## Mouse strains and infections

$5 \times 10^5$  metacyclic parasites isolated by peanut agglutinin (see above) from stationary cultures of *L. major* FVI were injected subcutaneously in the left hind footpad of Balb/c mice, as previously described [26]. Lesion development was monitored by measuring weekly the thickness of the footpad using a Vernier caliper. Number of parasites at lesion site were enumerated by limiting dilution assay [28]. Cell lines were passaged at least once through mice before performing *in vivo* virulence studies to minimize the loss of virulence after prolonged *in vitro* culture.

## Statistics

Significance was determined by p-values calculated from a two-tailed student's T-test in GraphPad Prism 6.0 unless otherwise stated.

## Accession numbers

*L. donovani* MT: GenBank accession number AY321397.1; *L. donovani* Ros3 GenBank accession number DQ205096.1; SHERP: GenBank accession number XM\_001683391; GAPDH: GenBank accession number XP\_001684904, and SOD: GenBank accession number XP\_001685502.

## Results and Discussion

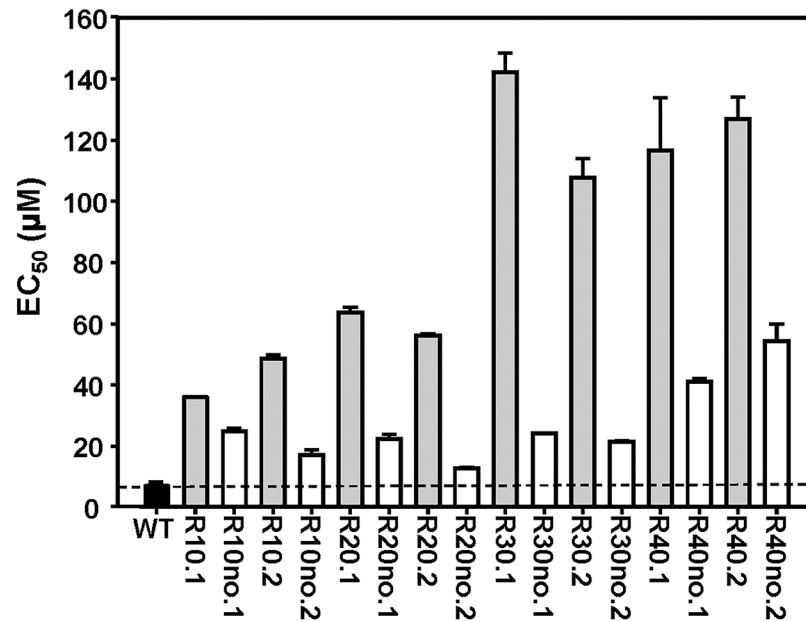
### Selection of MIL-resistant populations of *L. major*

*L. major* FVI MIL-resistant parasites were generated using step-wise selection up to 40  $\mu$ M MIL. Parasites were unable to proliferate in higher MIL concentrations, likely due to reaching the critical micellar concentration of MIL leading to degradation of the membrane due to the detergent effects of MIL [29]. FVI WT promastigotes were plated in solid M199 media and two random clones were used for MIL selection in flasks. In order to assess the degree of MIL-resistance in our lab populations of *L. major* we measured EC<sub>50</sub> values using the resazurin-based CellTiter-Blue (Promega) assay. MIL-resistant cultures exposed to the highest concentrations of MIL (30  $\mu$ M, 40  $\mu$ M), and labeled R30 and R40 herein, have accordingly higher EC<sub>50</sub> values than R10 and R20 (Fig 1). MIL-resistant cultures growing in the absence of MIL exhibited lower EC<sub>50</sub> values than their counterparts under constant MIL-selection. However, it is important to note that this decreased EC<sub>50</sub> value of MIL-resistant *L. major* is still higher than the EC<sub>50</sub> of WT *L. major* cultures (Fig 1, dotted line) after at least 95 passages (2 passages per week, ca 11 months). This suggests that once any degree of resistance is accrued MIL-resistant cultures do not revert back to WT phenotype, despite the removal of MIL selective pressure (Fig 1). It is worth noting that a different resistant phenotype may be obtained if drug selection is performed in axenic promastigotes or intracellular amastigotes, as shown for paromomycin selection in antimony-resistant *L. donovani* [17, 30].

### Phenotypic characterization

We next determined any difference in growth patterns between the sensitive (WT), resistant (R30) and resistant grown in the absence of MIL (R30no) *L. major* populations. Growth curves showed that MIL-resistant *L. major* proliferation is similar to *L. major* WT and cured lines (Fig 2), indicating that increased MIL exposure has no effect on proliferation in *L. major*. We used a FACS-based approach to detect two different apoptotic markers i) membrane permeability and ii) PS exposure to determine the response of parasite to stress after MIL selection. *L. major* R30 cell lines exhibit minimal stress and are comparable to WT populations judging the histogram levels corresponding to Annexin V and YO-PRO as analyzed by flow cytometry (S1 Fig).

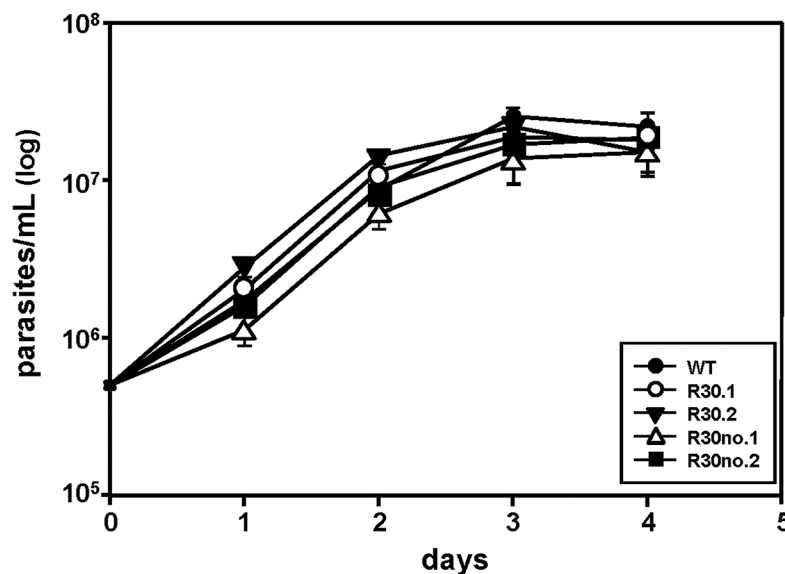
Experimental MIL-resistance in *L. donovani* has previously been attributed to identified point mutations in the MT and Ros3 subunit (T421N, L856P, W210, and M1) [31]. We sequenced the regions of the transporter and subunit in two independent clones of the R40 line (highest concentration; R40.1 and R40.2) that had been under drug selection for at least 75 passages. As shown in Table 1, these mutations were not found in our lab populations. These results are in accordance with previous characterization of MT in MIL-resistant *L. major* [15]. Two genuine mutations identified in the *L. major* MT were pinpointed for this study: a three-nucleotide deletion (M547del) and a transition mutation (G852D) [15]. As seen in Table 1, our lab populations displayed identical sequences to WT. Although our data do not eliminate the



**Fig 1. Susceptibility of MIL-resistant *L. major* FVI populations generated by step-wise selection and determined by EC<sub>50</sub> analysis.**  $1 \times 10^6$  Log-phase parasites were incubated in the presence of a range of drug concentrations for 48 hours at 27°C, and the surviving cells were quantified with Cell Titer Blue proliferation assay using a Typhoon FLA-9500 laser scanner. Populations of parasites were grown in increasing concentrations of MIL ranging from 10 µM (R10) to 40 µM (R40), showing increased resistance to MIL. Horizontal dashed line represents WT threshold for MIL resistance. “Rno” are resistant lines grown in the absence of MIL for at least 75 passages. Results are the average of triplicate experiments ± SD.

doi:10.1371/journal.pntd.0003948.g001

possibility of other unidentified genetic mutations having a role in MIL-resistance in *L. major*, it is interesting to observe that even at higher concentrations (R40) and after long-term exposure to MIL (at least 75 passages) none of the reported mutations were found.



**Fig 2. Growth curves of *L. major* WT and MIL-resistant promastigotes growing in the presence of 30µM MIL or absence of MIL selection.** Log-phase promastigotes cultures were counted daily until they reached stationary phase. Concentration was determined microscopically by counting in a Neubauer chamber. Results are the average of triplicate experiments ± SD.

doi:10.1371/journal.pntd.0003948.g002

## Cross-resistance of MIL-resistant *L. major* populations to other antileishmanials

We investigated the possibility of any conferred resistance to alternative antileishmanial treatments by measuring EC<sub>50</sub> values as described in Material and Methods. No cross-resistance was found in any of the R30 clones or cured lines to amphotericin B, antimony (III) and paromomycin (Table 2). Interestingly, miltefosine resistance significantly increases the sensitivity of the parasite to treatment with pentamidine 3-fold lower than WT (Table 2). When MIL has been withdrawn, the sensitivity of the parasite to this particular treatment is restored to levels comparable with the wild-type (Table 2), suggesting a potential synergistic mechanism. A similar synergy has been reported for sitamaquine/pentamidine combinations in *L. donovani* [32], although the use of a combined therapy of miltefosine and pentamidine is hindered by the high toxicity of pentamidine [33]. Lastly, treatment of R30 MIL-resistant cultures with paromomycin had a significant effect on the sensitivity (ranging from 2–4 fold lower than WT) of one of the clones (R30.2), indicative of potential clonal variability.

## Metacyclogenesis in MIL-resistant parasites

Procyclic *L. major* promastigotes differentiate into highly virulent metacyclic promastigotes during metacyclogenesis [34]. This process occurs in the midgut of sandflies and can be

**Table 1. Identification of point mutations previously identified in MIL-resistant *L. donovani* (T421N, L856P, W210\*, M1) and *L. major* (G582D, M547del).**

<b>T421N *</b>		
<i>L. major</i> wild-type	1256	TCGAAGCCGAC
<i>L. major</i> R40 clone 1	1256	TCGACGCCGAC
<i>L. major</i> R40 clone 2	1256	TCGACGCCGAC
<b>L856P *</b>		
<i>L. major</i> wild-type	2562	GGTGGTGCAGT
<i>L. major</i> R40 clone 1	2562	GTCGGTGGTGC
<i>L. major</i> R40 clone 2	2562	GTCGGTGGTGC
<b>W210* *</b>		
<i>L. major</i> wild-type	625	CACGAGCAAGC
<i>L. major</i> R40 clone 1	625	CACGAGCAAGC
<i>L. major</i> R40 clone 2	625	CACGAGCAAGC
<b>M1* *</b>		
<i>L. major</i> wild-type	1	ATGCTCGG
<i>L. major</i> R40 clone 1	1	ATGCTCGG
<i>L. major</i> R40 clone 2	1	ATGCTCGG
<b>G852D *</b>		
<i>L. major</i> wild-type	2518	GCCAGCTGCAT
<i>L. major</i> R40 clone 1	2518	GCCAGCTGCAT
<i>L. major</i> R40 clone 2	2518	GCCAGCTGCAT
<b>M547del * * *</b>		
<i>L. major</i> wild-type	1635	CCATCTGAATCCA
<i>L. major</i> R40 clone 1	1635	CCATCTGAATCCA
<i>L. major</i> R40 clone 2	1635	CCATCTGAATCCA

Previously identified mutations were sequenced and are indicated with an asterisk (\*) and highlighted in bold font, using *L. major* FVI wild-type as the reference strain. No mutations were detected in any of the resistant lines.

doi:10.1371/journal.pntd.0003948.t001



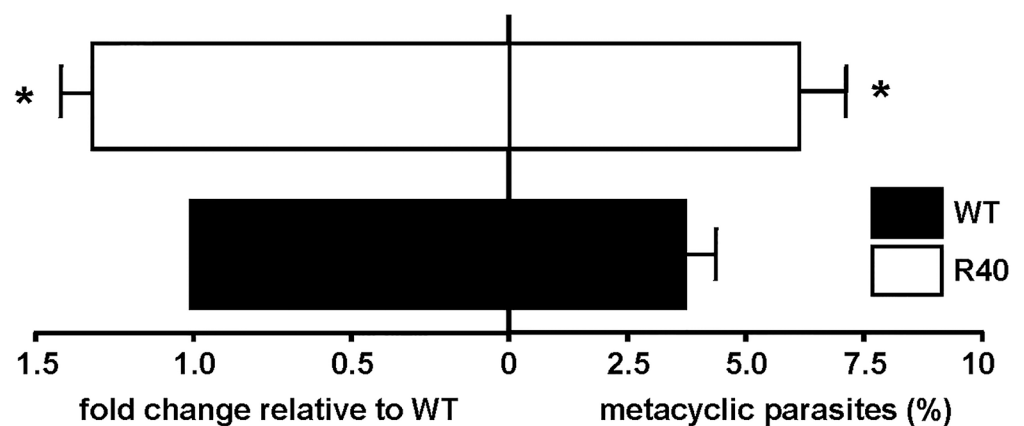
**Table 2. MIL resistance in *L. major* FVI promastigotes does not confer cross-resistance to alternative antileishmanials.**

Drug	LmWT	LmR30.1	LmR30no.1	LmR30.2	LmR30no.2
Miltefosine (μM)	6.68±0.43	142.29±6.24	24.08±0.17	107.80±6.16	21.39±0.43
Amphotericin B (nM)	52.36±11.37	69.61±15.05	44.38±4.03	46.36±0.57	64.13±14.41
Antimony (III) (μM)	11.66±0.08	s	–	–	–
Pentamidine (μg/ml)	3.23±0.43	s	–	s	–
Paromomycin (μM)	161.91±9.78	s	s	s	s

1x10<sup>6</sup> parasites/mL were incubated in increasing concentrations of amphotericin B (nM), pentamidine (μg/mL), paromomycin (μM), or antimony (III) (μM) for 48 hours at 27°C, using solvent controls where appropriate. Surviving cells were determined through the proliferation Cell Titer Blue assay using a Typhoon FLA-9500 laser scanner. Results are the average of triplicate experiments ± SD. (–) indicates no cross-resistance demonstrated as compared to WT, and (s) indicates an increased susceptibility to treatment.

doi:10.1371/journal.pntd.0003948.t002

mimicked *in vitro* when acidification occurs in the medium. Due to the lack of phenotypic differences in our clonal lines we performed the following *in vitro* and *in vivo* experiments with the R40.2 line. We enriched metacyclic promastigotes by Ficoll 400 step gradient and peanut agglutination, as described in Material and Methods. Analyses of metacyclogenesis showed that *L. major* R40 had higher percentages (2-fold) of metacyclics than *L. major* WT (Fig 3, right panel). qRT-PCR was used to amplify SHERP gene, which is almost exclusively and highly expressed in infective and non-replicative stages of the parasite [35]. SHERP expression was significantly elevated in R40 parasites (Fig 3, left panel), confirming our metacyclic enrichment approaches. Increased metacyclogenesis has been reported in antimony-resistant *L. donovani* clinical isolates [36], and metacyclogenesis is regarded as a major contributor to the fitness of the parasite. In New World cutaneous species, *L. mexicana* resistant to Glibenclamide, an ATP-binding-cassette (ABC)-transporter blocker exhibited a reduced expression of the Meta-1 protein [37].



**Fig 3. Metacyclogenesis in WT and MIL-resistant *L. major*.** *L. major* promastigotes resistant to MIL exhibit increased metacyclogenesis as determined by qRT-PCR of SHERP expression relative to housekeeping gene GAPDH and normalized to WT expression levels (left). 5-day stationary parasites were subjected to peanut agglutination and Ficoll-400 gradients and percentage of metacyclics is shown (right). Results are the average of triplicate experiments ± SD. Statistical differences determined with a Student's *t* test relative to control values (\* *p*<0.05)

doi:10.1371/journal.pntd.0003948.g003

### *In vitro* and *in vivo* infection studies

The stationary phase-specific differences of R40 primed us to study their capacity to infect RAW264.7 murine macrophage cells. We routinely passage our *L. major* cell lines through Balb/c mice to compensate for the loss of virulence due to *in vitro* culture. 5-day stationary cultures were subjected to peanut agglutination, and R40 and WT lines were incubated with RAW264.7 cells at a multiplicity of infection of 10 metacyclics per host cell. Intracellular parasite burden was determined by nuclear staining and microscopy at 6, 12, 24, and 48 h postinfection. Initial levels of R40 infections are comparable to the control (Fig 4A). A significant difference in R40 infectivity was apparent 48 hours post infection. This was further corroborated by decreased intracellular proliferation of R40 cells 48 hours post infection by over 20% (Fig 4B). Pentamidine-resistant *L. mexicana* showed no differences in the *in vitro* infectivity in resident mouse macrophages when compared with the wild-type clone [38].

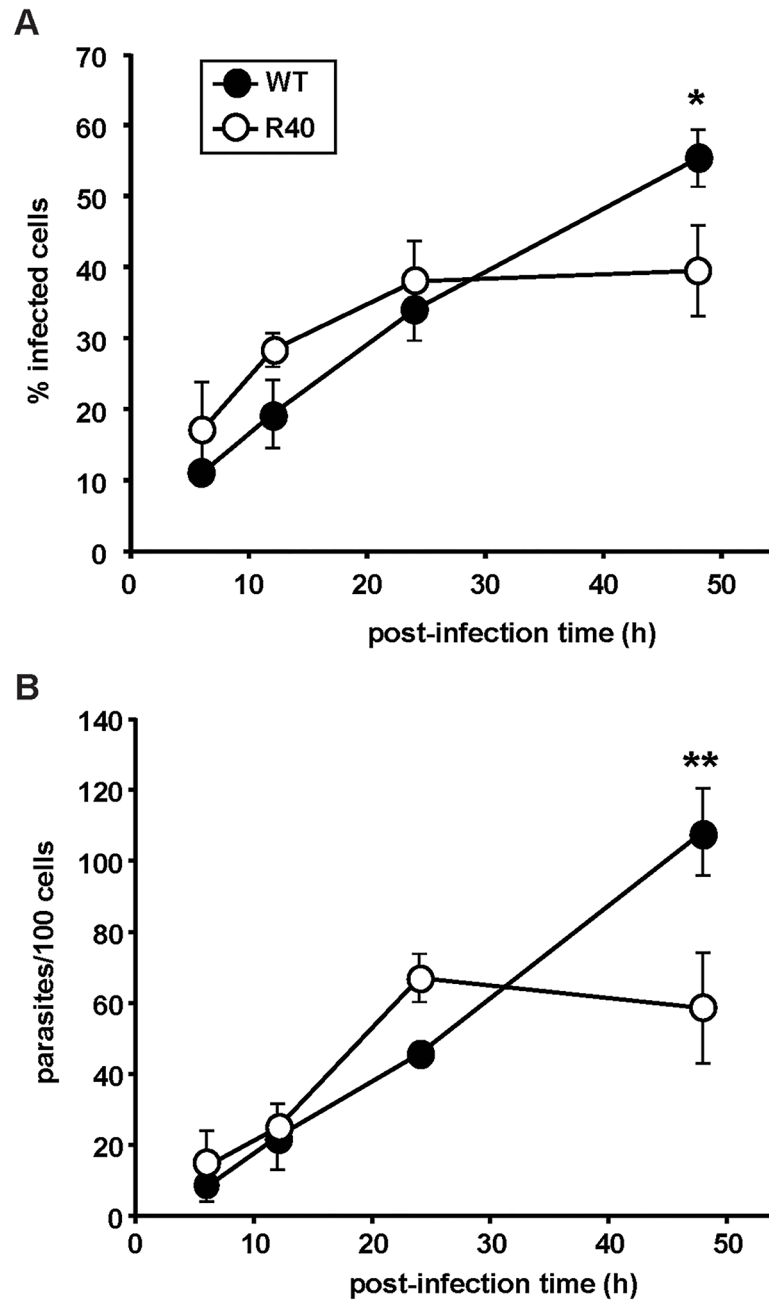
In contrast, higher metacyclogenesis levels in clinical isolates of *L. donovani* resistant to antimony translated into higher *in vitro* infection levels [36].

We next investigated the virulence of WT and R40 using an established experimental mouse infection [39]. Control and R40 were normalized for virulence through one passage in Balb/c mice [40].  $10^5$  WT and R40 metacyclic parasites were inoculated into the hind footpad of groups of five-six female Balb/c mice. A Vernier caliper was used to monitor lesion formation by measuring the increase in footpad size weekly. Control parasites attained a lesion size of ca. 4 mm, 5 weeks after inoculation and resulted in necrotic lesions (Fig 5). Interestingly, R40 were highly attenuated and lesions were only apparent 4 weeks after infection. Our observations *in vitro* with R40 cells showing a decreased infectivity and intracellular proliferation seem to have extended well to an *in vivo* mouse model. Amphotericin-resistant *L. mexicana* parasites were able to infect Balb/c mice, but the resulting lesion growth was slower than that after infection with susceptible parasites [41]. In contrast, several clinical isolates of *L. donovani* resistant to pentavalent antimonials showed a greater virulence in a mouse model of visceral leishmaniasis [42]. Importantly, our data suggest that metacyclogenesis alone is not a reliable marker of fitness, at least in MIL-resistant *L. major*, and *in vitro* and *in vivo* studies are necessary to further assess its competitive fitness. In this scenario, the *L. major* / MIL combination resembles the reduction in fitness widely observed in *Plasmodium falciparum* populations resistant to chloroquine [43].

### Sandfly infection studies

Fitness of *Leishmania* parasites is linked to transmission success in the natural insect vector, therefore we tested whether MIL resistance would impact the capacity of *Leishmania* to survive in the natural sandfly vector. Three-to-five day old female *Phlebotomus papatasi* (Origin: Turkey, PPTK) sandflies were infected with  $1 \times 10^7$  logarithmic parasites/mL as described in Material and Methods. 24h post-blood meal, the presence or absence of blood in the sandfly digestive tract was verified and one week post-blood meal, 9 midguts of blood-fed sandflies infected with WT and 14 midguts from the R40 group were individually dissected. Parasite load per individual midgut was assessed. No significant differences were observed between the two groups (Fig 6) suggesting that MIL resistance does not affect the survival capacity of *L. major* in the natural vector.

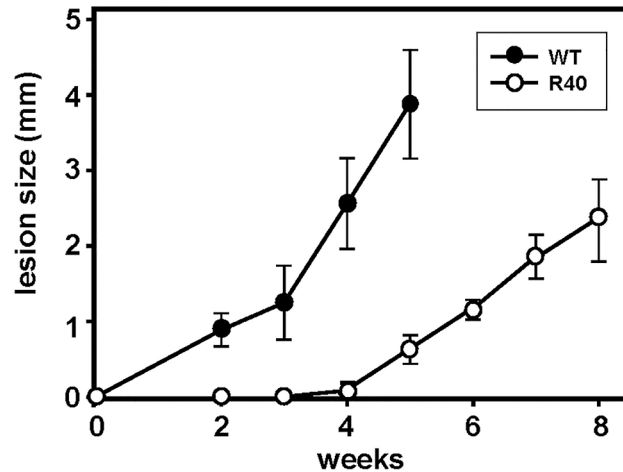
In summary, as shown for *L. donovani* [44], the generation of experimental resistance to MIL is easily achieved by step-wise selection in *L. major*. Axenic resistant promastigotes proliferate as control cells, and the phenotype is stable. As suggested by our data, metacyclogenesis is an important process in the life cycle of the parasite, but should be carefully interpreted as a fitness marker. A combination of *in vitro*, *in vivo* and vector studies are necessary to fully assess



**Fig 4. Host cell infection assay.** Early stages of macrophage invasion are similar between *L. major* WT and R40, as determined by infection of RAW264.7 murine macrophages. Metacyclic parasites were incubated in the presence of macrophages at a MOI of 10 metacyclic parasites per macrophage and cells were collected at 6h, 12h, 24h, and 48h. Samples were stained and infection was determined through light microscopy. **(A)** The percentage of infected macrophages, and **(B)** the number of parasites/100 cells were recorded. Results are the average of triplicate experiments  $\pm$  SD. Statistical differences determined with a Student's *t* test relative to control values (\*  $p < 0.05$ ; \*\*  $p < 0.01$ )

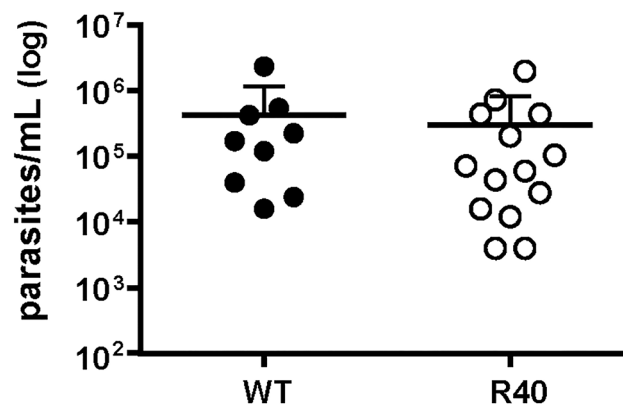
doi:10.1371/journal.pntd.0003948.g004

the competitive fitness of MIL-resistant *L. major*, and studies would be further strengthened with the use of recent clinical isolates of both MIL-sensitive and MIL-resistant *L. major* parasites. Further studies will attempt to understand the impaired ability of MIL-resistant *L. major*



**Fig 5. Virulence of WT and MIL-resistant *L. major*.** R40 demonstrate attenuated virulence *in vivo* compared with WT promastigotes.  $1 \times 10^6$  WT (n = 5) and R40 (n = 6) metacyclic promastigotes were injected into the footpads of female BALB/c mice. Lesion size was recorded weekly by taking measurements of footpad thickness with a Vernier caliper, results are averages  $\pm$  SD.

doi:10.1371/journal.pntd.0003948.g005



**Fig 6. WT and R40 *L. major* parasites exhibit comparable ability to colonize and survive in the sandfly vector.** *P. papatasi* were fed with heat-inactivated fresh mouse blood mixed with  $1 \times 10^7$  parasites/mL of both *L. major* WT and R40. Blood-fed sandflies (WT: n = 9, R40: n = 14) were maintained for one week on a sucrose diet, after which the midgut was dissected. Midguts were placed in 50  $\mu$ L 1X PBS and crushed with a pestle. Parasite presence in each midgut was assessed by counting with a Neubauer chamber. No significant differences were observed.

doi:10.1371/journal.pntd.0003948.g006

to survive in the mammalian host at the molecular level. Overall, our findings are relevant for current and future antileishmanial chemotherapy strategies.

## Supporting Information

**S1 Fig. Flow cytometry analysis of MIL-resistant *L. major* promastigotes.** WT, *L. major* FVI promastigotes grown in 40 $\mu$ M MIL, and R40 promastigotes where the MIL selection has been withdrawn, using two different apoptotic markers (A) Annexin V and (B) YO-PRO. (TIF)

**S1 Table. List of primers used in this study.** (DOCX)

## Acknowledgments

We thank Dr. Nicholas Geraci for his assistance with macrophage infections.

## Author Contributions

Conceived and designed the experiments: KGT MAMo. Performed the experiments: KGT PV MRM MW. Analyzed the data: KGT MAMc MAMo. Contributed reagents/materials/analysis tools: MW MAMc. Wrote the paper: KGT MAMo.

## References

1. Herwaldt BL. Leishmaniasis. *Lancet*. 1999; 354(9185):1191–9. Epub 1999/10/08. doi: [10.1016/S0140-6736\(98\)10178-2](https://doi.org/10.1016/S0140-6736(98)10178-2) PMID: [10513726](https://pubmed.ncbi.nlm.nih.gov/10513726/).
2. Alvar J, Velez ID, Bern C, Herrero M, Desjeux P, Cano J, et al. Leishmaniasis worldwide and global estimates of its incidence. *PloS one*. 2012; 7(5):e35671. Epub 2012/06/14. doi: [10.1371/journal.pone.0035671](https://doi.org/10.1371/journal.pone.0035671) PMID: [22693548](https://pubmed.ncbi.nlm.nih.gov/22693548/); PubMed Central PMCID: PMC3365071.
3. Zilberstein D, Shapira M. The role of pH and temperature in the development of Leishmania parasites. *Annual review of microbiology*. 1994; 48:449–70. PMID: [7826014](https://pubmed.ncbi.nlm.nih.gov/7826014/).
4. Singh N, Kumar M, Singh RK. Leishmaniasis: current status of available drugs and new potential drug targets. *Asian Pac J Trop Med*. 2012; 5(6):485–97. doi: [10.1016/S1995-7645\(12\)60084-4](https://doi.org/10.1016/S1995-7645(12)60084-4) PMID: [22575984](https://pubmed.ncbi.nlm.nih.gov/22575984/).
5. Croft SL, Sundar S, Fairlamb AH. Drug resistance in leishmaniasis. *Clinical microbiology reviews*. 2006; 19(1):111–26. PMID: [16418526](https://pubmed.ncbi.nlm.nih.gov/16418526/).
6. Dorlo TP, Balasegaram M, Beijnen JH, de Vries PJ. Miltefosine: a review of its pharmacology and therapeutic efficacy in the treatment of leishmaniasis. *The Journal of antimicrobial chemotherapy*. 2012; 67(11):2576–97. Epub 2012/07/27. doi: [10.1093/jac/dks275](https://doi.org/10.1093/jac/dks275) PMID: [22833634](https://pubmed.ncbi.nlm.nih.gov/22833634/).
7. Luque-Ortega JR, Rivas L. Miltefosine (hexadecylphosphocholine) inhibits cytochrome c oxidase in *Leishmania donovani* promastigotes. *Antimicrobial agents and chemotherapy*. 2007; 51(4):1327–32. doi: [10.1128/AAC.01415-06](https://doi.org/10.1128/AAC.01415-06) PMID: [17283192](https://pubmed.ncbi.nlm.nih.gov/17283192/); PubMed Central PMCID: PMC1855476.
8. Canuto GA, Castilho-Martins EA, Tavares MF, Rivas L, Barbas C, Lopez-Gonzalvez A. Multi-analytical platform metabolomic approach to study miltefosine mechanism of action and resistance in *Leishmania*. *Analytical and bioanalytical chemistry*. 2014; 406(14):3459–76. doi: [10.1007/s00216-014-7772-1](https://doi.org/10.1007/s00216-014-7772-1) PMID: [24722876](https://pubmed.ncbi.nlm.nih.gov/24722876/).
9. Marinho FD, Goncalves KCD, de Oliveira SS, de Oliveira ACDC, Bellio M, d'Avila-Levy CM, et al. Miltefosine induces programmed cell death in *Leishmania amazonensis* promastigotes. *Memorias do Instituto Oswaldo Cruz*. 2011; 106(4):507–9. PMID: [WOS:000292402300021](https://pubmed.ncbi.nlm.nih.gov/WOS:000292402300021/).
10. Vincent IM, Weidt S, Rivas L, Burgess K, Smith TK, Ouellette M. Untargeted metabolomic analysis of miltefosine action in *Leishmania infantum* reveals changes to the internal lipid metabolism. *Int J Parasitol-Drug*. 2014; 4(1):20–7. doi: [10.1016/j.ijpddr.2013.11.002](https://doi.org/10.1016/j.ijpddr.2013.11.002) PMID: [WOS:000331708400003](https://pubmed.ncbi.nlm.nih.gov/WOS:000331708400003/).
11. Perez-Victoria FJ, Sanchez-Canete MP, Seifert K, Croft SL, Sundar S, Castanys S, et al. Mechanisms of experimental resistance of *Leishmania* to miltefosine: Implications for clinical use. *Drug Resist Updat*. 2006; 9(1–2):26–39. Epub 2006/07/04. doi: [10.1016/j.drug.2006.04.001](https://doi.org/10.1016/j.drug.2006.04.001) PMID: [16814199](https://pubmed.ncbi.nlm.nih.gov/16814199/).
12. Perez-Victoria FJ, Gamarro F, Ouellette M, Castanys S. Functional cloning of the miltefosine transporter. A novel P-type phospholipid translocase from *Leishmania* involved in drug resistance. *The Journal of biological chemistry*. 2003; 278(50):49965–71. Epub 2003/09/30. doi: [10.1074/jbc.M308352200](https://doi.org/10.1074/jbc.M308352200) PMID: [14514670](https://pubmed.ncbi.nlm.nih.gov/14514670/).
13. Perez-Victoria FJ, Sanchez-Canete MP, Castanys S, Gamarro F. Phospholipid translocation and miltefosine potency require both *L. donovani* miltefosine transporter and the new protein LdRos3 in *Leishmania* parasites. *The Journal of biological chemistry*. 2006; 281(33):23766–75. Epub 2006/06/21. doi: [10.1074/jbc.M605214200](https://doi.org/10.1074/jbc.M605214200) PMID: [16785229](https://pubmed.ncbi.nlm.nih.gov/16785229/).
14. Bhandari V, Kulshrestha A, Deep DK, Stark O, Prajapati VK, Ramesh V, et al. Drug susceptibility in *Leishmania* isolates following miltefosine treatment in cases of visceral leishmaniasis and post kala-azar dermal leishmaniasis. *PLoS neglected tropical diseases*. 2012; 6(5):e1657. Epub 2012/05/26. doi: [10.1371/journal.pntd.0001657](https://doi.org/10.1371/journal.pntd.0001657) PMID: [22629478](https://pubmed.ncbi.nlm.nih.gov/22629478/); PubMed Central PMCID: PMC3358331.
15. Coelho AC, Boisvert S, Mukherjee A, Leprohon P, Corbeil J, Ouellette M. Multiple mutations in heterogeneous miltefosine-resistant *Leishmania major* population as determined by whole genome sequencing. *PLoS neglected tropical diseases*. 2012; 6(2):e1512. Epub 2012/02/22. doi: [10.1371/journal.pntd.0001512](https://doi.org/10.1371/journal.pntd.0001512) PMID: [22348164](https://pubmed.ncbi.nlm.nih.gov/22348164/); PubMed Central PMCID: PMC3279362.

16. Cojean S, Houze S, Haouchine D, Huteau F, Lariven S, Hubert V, et al. Leishmania resistance to miltefosine associated with genetic marker. *Emerg Infect Dis*. 2012; 18(4):704–6. doi: [10.3201/eid1804.110841](https://doi.org/10.3201/eid1804.110841) PMID: [22469394](https://pubmed.ncbi.nlm.nih.gov/22469394/); PubMed Central PMCID: PMC3309694.
17. Hendrickx S, Boulet G, Mondelaers A, Dujardin JC, Rijal S, Lachaud L, et al. Experimental selection of paromomycin and miltefosine resistance in intracellular amastigotes of *Leishmania donovani* and *L. infantum*. *Parasitology research*. 2014; 113(5):1875–81. doi: [10.1007/s00436-014-3835-7](https://doi.org/10.1007/s00436-014-3835-7) PMID: [24615359](https://pubmed.ncbi.nlm.nih.gov/24615359/).
18. Vanaerschot M, Huijben S, Van den Broeck F, Dujardin JC. Drug resistance in vectorborne parasites: multiple actors and scenarios for an evolutionary arms race. *FEMS microbiology reviews*. 2014; 38(1):41–55. doi: [10.1111/1574-6976.12032](https://doi.org/10.1111/1574-6976.12032) PMID: [23815683](https://pubmed.ncbi.nlm.nih.gov/23815683/).
19. Vanaerschot M, Decuypere S, Berg M, Roy S, Dujardin JC. Drug-resistant microorganisms with a higher fitness—can medicines boost pathogens? *Crit Rev Microbiol*. 2013; 39(4):384–94. doi: [10.3109/1040841X.2012.716818](https://doi.org/10.3109/1040841X.2012.716818) PMID: [22950457](https://pubmed.ncbi.nlm.nih.gov/22950457/).
20. Natera S, Machuca C, Padron-Nieves M, Romero A, Diaz E, Ponte-Sucre A. *Leishmania* spp.: proficiency of drug-resistant parasites. *International journal of antimicrobial agents*. 2007; 29(6):637–42. doi: [10.1016/j.ijantimicag.2007.01.004](https://doi.org/10.1016/j.ijantimicag.2007.01.004) PMID: [17353113](https://pubmed.ncbi.nlm.nih.gov/17353113/).
21. Garcia-Hernandez R, Gomez-Perez V, Castanys S, Gamarro F. Fitness of *Leishmania donovani* Parasites Resistant to Drug Combinations. *PLoS neglected tropical diseases*. 2015; 9(4):e0003704. doi: [10.1371/journal.pntd.0003704](https://doi.org/10.1371/journal.pntd.0003704) PMID: [25849149](https://pubmed.ncbi.nlm.nih.gov/25849149/).
22. LeBowitz JH. Transfection experiments with *Leishmania*. *Methods Cell Biol*. 1994; 45:65–78. PMID: [7707995](https://pubmed.ncbi.nlm.nih.gov/7707995/).
23. Vacchina P, Morales MA. In vitro screening test using *Leishmania* promastigotes stably expressing mCherry protein. *Antimicrobial agents and chemotherapy*. 2014; 58(3):1825–8. doi: [10.1128/AAC.02224-13](https://doi.org/10.1128/AAC.02224-13) PMID: [24395225](https://pubmed.ncbi.nlm.nih.gov/24395225/); PubMed Central PMCID: PMC3957829.
24. Larkin MA, Blackshields G, Brown NP, Chenna R, McGettigan PA, McWilliam H, et al. Clustal W and Clustal X version 2.0. *Bioinformatics*. 2007; 23(21):2947–8. PMID: [17846036](https://pubmed.ncbi.nlm.nih.gov/17846036/).
25. Bookout AL, Cummins CL, Mangelsdorf DJ, Pesola JM, Kramer MF. High-throughput real-time quantitative reverse transcription PCR. *Curr Protoc Mol Biol*. 2006;Chapter 15:Unit 15 8. doi: [10.1002/0471142727.mb1508s73](https://doi.org/10.1002/0471142727.mb1508s73) PMID: [18265376](https://pubmed.ncbi.nlm.nih.gov/18265376/).
26. Morales MA, Pescher P, Spath GF. *Leishmania major* MPK7 protein kinase activity inhibits intracellular growth of the pathogenic amastigote stage. *Eukaryotic cell*. 2010; 9(1):22–30. Epub 2009/10/06. doi: [10.1128/EC.00196-09](https://doi.org/10.1128/EC.00196-09) PMID: [19801421](https://pubmed.ncbi.nlm.nih.gov/19801421/); PubMed Central PMCID: PMC2805286.
27. Ramalho-Ortigao JM, Kamhawi S, Joshi MB, Reynoso D, Lawyer PG, Dwyer DM, et al. Characterization of a blood activated chitinolytic system in the midgut of the sand fly vectors *Lutzomyia longipalpis* and *Phlebotomus papatasi*. *Insect Mol Biol*. 2005; 14(6):703–12. doi: [10.1111/j.1365-2583.2005.00601.x](https://doi.org/10.1111/j.1365-2583.2005.00601.x) PMID: [16313571](https://pubmed.ncbi.nlm.nih.gov/16313571/).
28. Titus RG, Marchand M, Boon T, Louis JA. A limiting dilution assay for quantifying *Leishmania major* in tissues of infected mice. *Parasite immunology*. 1985; 7(5):545–55. PMID: [3877902](https://pubmed.ncbi.nlm.nih.gov/3877902/)
29. Urbina JA. Mechanisms of action of lysophospholipid analogues against trypanosomatid parasites. *Transactions of the Royal Society of Tropical Medicine and Hygiene*. 2006; 100 Suppl 1:S9–S16. doi: [10.1016/j.trstmh.2006.03.010](https://doi.org/10.1016/j.trstmh.2006.03.010) PMID: [16930650](https://pubmed.ncbi.nlm.nih.gov/16930650/).
30. Hendrickx S, Inocencio da Luz RA, Bhandari V, Kuypers K, Shaw CD, Lonchamp J, et al. Experimental induction of paromomycin resistance in antimony-resistant strains of *L. donovani*: outcome dependent on in vitro selection protocol. *PLoS neglected tropical diseases*. 2012; 6(5):e1664. Epub 2012/06/06. doi: [10.1371/journal.pntd.0001664](https://doi.org/10.1371/journal.pntd.0001664) PMID: [22666513](https://pubmed.ncbi.nlm.nih.gov/22666513/); PubMed Central PMCID: PMC3362622.
31. Perez-Victoria FJ, Castanys S, Gamarro F. *Leishmania donovani* resistance to miltefosine involves a defective inward translocation of the drug. *Antimicrobial agents and chemotherapy*. 2003; 47(8):2397–403. Epub 2003/07/25. PMID: [12878496](https://pubmed.ncbi.nlm.nih.gov/12878496/); PubMed Central PMCID: PMC166066.
32. Seifert K, Munday J, Syeda T, Croft SL. In vitro interactions between sitamaquine and amphotericin B, sodium stibogluconate, miltefosine, paromomycin and pentamidine against *Leishmania donovani*. *The Journal of antimicrobial chemotherapy*. 2011; 66(4):850–4. doi: [10.1093/jac/dkq542](https://doi.org/10.1093/jac/dkq542) PMID: [21393188](https://pubmed.ncbi.nlm.nih.gov/21393188/).
33. Olliaro PL, Guerin PJ, Gerstl S, Haaskjold AA, Rottingen JA, Sundar S. Treatment options for visceral leishmaniasis: a systematic review of clinical studies done in India, 1980–2004. *The Lancet infectious diseases*. 2005; 5(12):763–74. doi: [10.1016/S1473-3099\(05\)70296-6](https://doi.org/10.1016/S1473-3099(05)70296-6) PMID: [16310148](https://pubmed.ncbi.nlm.nih.gov/16310148/).
34. da Silva R, Sacks DL. Metacyclogenesis is a major determinant of *Leishmania* promastigote virulence and attenuation. *Infection and immunity*. 1987; 55(11):2802–6. PMID: [3666964](https://pubmed.ncbi.nlm.nih.gov/3666964/).
35. Knuepfer E, Stierhof YD, McKean PG, Smith DF. Characterization of a differentially expressed protein that shows an unusual localization to intracellular membranes in *Leishmania major*. *The Biochemical journal*. 2001; 356(Pt 2):335–44. PMID: [11368759](https://pubmed.ncbi.nlm.nih.gov/11368759/).

36. Ouakad M, Vanaerschot M, Rijal S, Sundar S, Speybroeck N, Kestens L, et al. Increased metacyclogenesis of antimony-resistant *Leishmania donovani* clinical lines. *Parasitology*. 2011; 138(11):1392–9. doi: [10.1017/S0031182011001120](https://doi.org/10.1017/S0031182011001120) PMID: [21819638](https://pubmed.ncbi.nlm.nih.gov/21819638/).
37. Silva N, Camacho N, Figarella K, Ponte-Sucre A. Cell differentiation and infectivity of *Leishmania mexicana* are inhibited in a strain resistant to an ABC-transporter blocker. *Parasitology*. 2004; 128(Pt 6):629–34. PMID: [15206465](https://pubmed.ncbi.nlm.nih.gov/15206465/).
38. Sereno D, Lemesre JL. In vitro life cycle of pentamidine-resistant amastigotes: stability of the chemoresistant phenotypes is dependent on the level of resistance induced. *Antimicrobial agents and chemotherapy*. 1997; 41(9):1898–903. PMID: [9303381](https://pubmed.ncbi.nlm.nih.gov/9303381/); PubMed Central PMCID: PMC164032.
39. Norris-Mullins B, VanderKolk K, Vacchina P, Joyce MV, Morales MA. LmaPA2G4, a homolog of human Ebp1, is an essential gene and inhibits cell proliferation in *L. major*. *PLoS neglected tropical diseases*. 2014; 8(1):e2646. doi: [10.1371/journal.pntd.0002646](https://doi.org/10.1371/journal.pntd.0002646) PMID: [24421916](https://pubmed.ncbi.nlm.nih.gov/24421916/); PubMed Central PMCID: PMC3888471.
40. Moreira D, Santarem N, Loureiro I, Tavares J, Silva AM, Amorim AM, et al. Impact of continuous axenic cultivation in *Leishmania infantum* virulence. *PLoS neglected tropical diseases*. 2012; 6(1):e1469. Epub 2012/02/01. doi: [10.1371/journal.pntd.0001469](https://doi.org/10.1371/journal.pntd.0001469) PMID: [22292094](https://pubmed.ncbi.nlm.nih.gov/22292094/); PubMed Central PMCID: PMC3265455.
41. Al-Mohammed HI, Chance ML, Bates PA. Production and characterization of stable amphotericin-resistant amastigotes and promastigotes of *Leishmania mexicana*. *Antimicrobial agents and chemotherapy*. 2005; 49(8):3274–80. doi: [10.1128/AAC.49.8.3274-3280.2005](https://doi.org/10.1128/AAC.49.8.3274-3280.2005) PMID: [16048936](https://pubmed.ncbi.nlm.nih.gov/16048936/); PubMed Central PMCID: PMC1196255.
42. Vanaerschot M, De Doncker S, Rijal S, Maes L, Dujardin JC, Decuypere S. Antimonial resistance in *Leishmania donovani* is associated with increased in vivo parasite burden. *PloS one*. 2011; 6(8):e23120. doi: [10.1371/journal.pone.0023120](https://doi.org/10.1371/journal.pone.0023120) PMID: [21829701](https://pubmed.ncbi.nlm.nih.gov/21829701/); PubMed Central PMCID: PMC3148249.
43. Felger I, Beck HP. Fitness costs of resistance to antimalarial drugs. *Trends in parasitology*. 2008; 24(8):331–3. doi: [10.1016/j.pt.2008.05.004](https://doi.org/10.1016/j.pt.2008.05.004) PMID: [18603474](https://pubmed.ncbi.nlm.nih.gov/18603474/).
44. Seifert K, Matu S, Javier Perez-Victoria F, Castanys S, Gamarro F, Croft SL. Characterisation of *Leishmania donovani* promastigotes resistant to hexadecylphosphocholine (miltefosine). *International journal of antimicrobial agents*. 2003; 22(4):380–7. Epub 2003/10/03. PMID: [14522101](https://pubmed.ncbi.nlm.nih.gov/14522101/).