



P53 and Cancer-Associated Sialylated Glycans Are Surrogate Markers of Cancerization of the Bladder Associated with *Schistosoma haematobium* Infection

Júlio Santos^{1,2,3}, Elisabete Fernandes^{1,3,9}, José Alexandre Ferreira^{1,4,9*}, Luís Lima^{1,5,6}, Ana Tavares^{1,7}, Andreia Peixoto¹, Beatriz Parreira¹, José Manuel Correia da Costa^{8,9}, Paul J. Brindley¹⁰, Carlos Lopes^{1,11}, Lúcio L. Santos^{1,12,13,14,9*}

1 Experimental Pathology and Therapeutics group, Portuguese Institute for Oncology of Porto, Porto, Portugal, **2** Clínica Sagrada Esperança, Luanda, Angola, **3** Grupo de Investigação em Cancro Digestivo (GICD), Porto, Portugal, **4** Department of Chemistry of the University of Aveiro, Aveiro, Portugal, **5** Research Department, LPCC-Portuguese League Against Cancer (NRNorte), Porto, Portugal, **6** Núcleo de Investigação em Farmácia – Centro de Investigação em Saúde e Ambiente (CISA), School of Allied Health Sciences – Polytechnic Institute of Porto, Porto, Portugal, **7** Department of Pathology, Portuguese Institute for Oncology of Porto, Porto, Portugal, **8** Center for the Study of Animal Science (ICETA), University of Porto, Porto, Portugal, **9** INSA, National Institute of Health, Porto, Portugal, **10** Research Center for Neglected Diseases of Poverty- Department of Microbiology, Immunology & Tropical Medicine, School of Medicine & Health Sciences, George Washington University, Washington, D.C., United States of America, **11** Abel Salazar Biomedical Sciences Institute (ICBAS), University of Porto, Porto, Portugal, **12** Health School of University of Fernando Pessoa, Porto, Portugal, **13** Department of Surgical Oncology, Portuguese Institute for Oncology, Porto, Portugal, **14** National Cancer Center, Luanda, Angol

Abstract

Background: Bladder cancer is a significant health problem in rural areas of Africa and the Middle East where *Schistosoma haematobium* is prevalent, supporting an association between malignant transformation and infection by this blood fluke. Nevertheless, the molecular mechanisms linking these events are poorly understood. Bladder cancers in infected populations are generally diagnosed at a late stage since there is a lack of non-invasive diagnostic tools, hence enforcing the need for early carcinogenesis markers.

Methodology/Principal Findings: Forty-three formalin-fixed paraffin-embedded bladder biopsies of *S. haematobium*-infected patients, consisting of bladder tumours, tumour adjacent mucosa and pre-malignant/malignant urothelial lesions, were screened for bladder cancer biomarkers. These included the oncoprotein p53, the tumour proliferation rate (Ki-67 > 17%), cell-surface cancer-associated glycan sialyl-Tn (sTn) and sialyl-Lewis^{a/x} (sLe^a/sLe^x), involved in immune escape and metastasis. Bladder tumours of non-*S. haematobium* etiology and normal urothelium were used as controls. *S. haematobium*-associated benign/pre-malignant lesions present alterations in p53 and sLe^x that were also found in bladder tumours. Similar results were observed in non-*S. haematobium* associated tumours, irrespectively of their histological nature, denoting some common molecular pathways. In addition, most benign/pre-malignant lesions also expressed sLe^a. However, proliferative phenotypes were more prevalent in lesions adjacent to bladder tumors while sLe^a was characteristic of sole benign/pre-malignant lesions, suggesting it may be a biomarker of early carcinogenesis associated with the parasite. A correlation was observed between the frequency of the biomarkers in the tumor and adjacent mucosa, with the exception of Ki-67. Most *S. haematobium* eggs embedded in the urothelium were also positive for sLe^a and sLe^x. Reinforcing the pathologic nature of the studied biomarkers, none was observed in the healthy urothelium.

Conclusion/Significance: This preliminary study suggests that p53 and sialylated glycans are surrogate biomarkers of bladder cancerization associated with *S. haematobium*, highlighting a missing link between infection and cancer development. Eggs of *S. haematobium* express sLe^a and sLe^x antigens in mimicry of human leukocytes glycosylation, which may play a role in the colonization and disease dissemination. These observations may help the early identification of infected patients at a higher risk of developing bladder cancer and guide the future development of non-invasive diagnostic tests.

Citation: Santos J, Fernandes E, Ferreira JA, Lima L, Tavares A, et al. (2014) P53 and Cancer-Associated Sialylated Glycans Are Surrogate Markers of Cancerization of the Bladder Associated with *Schistosoma haematobium* Infection. PLoS Negl Trop Dis 8(12): e3329. doi:10.1371/journal.pntd.0003329

Editor: Jason Mulvenna, Queensland Institute of Medical Research, Australia

Received: May 19, 2014; **Accepted:** October 8, 2014; **Published:** December 11, 2014

Copyright: © 2014 Santos et al. This is an open-access article distributed under the terms of the Creative Commons Attribution License, which permits unrestricted use, distribution, and reproduction in any medium, provided the original author and source are credited.

Data Availability: The authors confirm that all data underlying the findings are fully available without restriction. All relevant data are within the paper and its Supporting Information files.

Funding: JAF gratefully acknowledges a Postdoctoral Grant (SFRH/BPD/66288/2009) from FCT-Fundação para a Ciência e Tecnologia of Portugal, co-financed by European Social Fund (ESF) under Human Potential Operation Programme (POPH) from National Strategic Reference Framework (NSRF). This work was also supported by FCT, European Union, QREN, FEDER and COMPETE for funding QOPNA research unit (projectPEst-C/QUI/UI0062/2013). EF acknowledges a grant from Grupo de Investigação em Cancro Digestivo (GICD) of Portugal. We thank to the Portuguese League Against Cancer (NRNorte) for support of this investigation. The funders had no role in study design, data collection and analysis, decision to publish, or preparation of the manuscript.

Competing Interests: The authors have declared that no competing interests exist.

* Email: alexandrecaastroferreira@gmail.com (JAF); llarasantos@gmail.com (LLS)

† These authors contributed equally to this work.

Author Summary

Epidemiological studies associate infection with *S. haematobium*, an endemic parasitic flatworm in Africa and the Middle East, with the development of bladder cancer. Nevertheless, little molecular evidence exists supporting this association. This work draws attention to the common molecular pathways underlying these two events, highlighting a potentially unreported link between infection and cancer development. It has been demonstrated that a panel of biomarkers commonly associated with aggressive forms of bladder cancer is also present in non-malignant tissues infected with the parasite. This may offer a means of early identification of people with this parasitic infection who are at risk of developing of bladder cancer, and may guide the establishment of non-invasive diagnostic tests. Furthermore, we observed that parasite eggs mimic the molecular nature of human cells, providing a possible mechanism of immune escape and persistent infection. Such knowledge is considered pivotal to develop novel therapeutic strategies.

Introduction

Schistosoma haematobium, a parasitic flatworm infecting millions of people in Angola and other countries of Africa and Middle East, is responsible for the development of urinary schistosomiasis, a neglected tropical disease [1,2]. The World Health Organization estimates that 500 to 600 million people residing in rural agricultural and periurban areas are at risk of infection and over 200 million people are currently infected, 10% of which will experience severe health complications; [3,4].

The parasite has a complex life cycle consisting of two phases, one inside the human body (the definitive host) and another inside a snail of the genus *Bulinus* [5]. Free-swimming cercariae penetrate human skin when in contact with contaminated water, enter the blood stream and travel to the liver to mature into adult flukes. After a period of about three weeks the young flukes migrate to the plexuses around the urinary bladder to copulate. The eggs released by female flukes traverse the wall of the bladder causing haematuria, fibrosis and ultimately the calcification of the tissue; they are then excreted through urine [6,7]. However, some eggs become embedded in the bladder mucosa further contributing to chronic inflammation and granuloma formation [6,7]. The eruption of the eggs through the mucosa stimulates not only the establishment of chronic inflammations but also promotes the development of benign/pre-malignant bladder lesions such as urothelial hyperplasia and dysplasia that may be precursors of bladder cancer [8–10]. When contaminated urine comes in contact with fresh watercourses (e.g. rivers), the eggs hatch, releasing free-swimming miracidia that infect the intermediate snail host. After a maturation period new cercariae are formed and released into the environment, assuring the perpetuation of infection and transmission of the disease [5].

The World Health Organization (WHO) International Agency for Cancer classifies *S. haematobium* as a Group 1 biological carcinogen, a definitive cause of cancer [11]. Epidemiological findings reveal a positive relationship between *S. haematobium* infection and the development of squamous cell carcinoma of the bladder, a type of bladder cancer rarely observed in western patients but prevalent in Africa and Middle East [12–14]. It has been observed that patients infected with the parasite have a higher risk of developing bladder cancer earlier in life than uninfected people [13,15]. The probability of developing cancer

has been suggested to depend on the intensity (worm burden and tissue egg burden) and duration of infection [16,17]. However, despite the epidemiological data from case control studies and the geographical overlap between bladder cancer development and regions endemic for urogenital schistosomiasis [8,18], few experimental evidences support this association. Nonetheless, Botelho and coworkers demonstrated recently that the exposure to soluble antigen extracts of mixed sex adult *S. haematobium* worms and eggs promote the tumorigenic potential of urothelial cells *in vitro* and *in vivo* [8,19,20], and Zhong and colleagues have reported hypermethylation of several genes including *RASSF1A* and *TIMP3* detected in urine sediments of Ghanaians with bladder pathology associated with infection with *S. haematobium* [21]. Further understanding of the pathobiological features underlying the association between *S. haematobium* and bladder cancer development are needed to support these observations. The identification of the molecular events underlying early urothelial carcinogenesis in the bladder is also warranted. This is a particular critical matter since early symptoms of schistosomiasis, which include urinary pain and hematuria, are common to those of bladder cancer. As such, they are often neglected by local communities in developing countries, where medical assistance is scarce. Therefore, bladder tumours are often diagnosed at a late stage, which is associated with decreased overall survival. The identification of biomarkers may help to control *S. haematobium*-associated bladder cancer in these populations.

This research is based on establishing common molecular alterations among schistosoma-associated tumours and benign/pre-malignant lesions found either in tumor-adjacent mucosa or in apparently normal urothelia of cases without tumors. These lesions were screened for oncoprotein p53 that is associated with both aggressive urothelial [22–24] and squamous cell bladder carcinomas [25]. The proliferation rate, given by the overexpression of nuclear protein Ki-67, and considered a prognostic marker of tumor recurrence and progression in non-muscle invasive urothelial carcinoma [26–28], was also evaluated. Particular attention was further devoted to the characterization of alterations in membrane-bound glycans that accompanied malignant transformations and favor cell-to-cell detachment, migration, immune evasion and metastization [29]. This includes the sialylated antigens sialyl-Tn (*sTn*; CA72-4) [30,31], sialyl-Le^a (*sLe^a*, CA19-9) [32–34] and sialyl-Le^x (*sLe^x*) [35,36] that have been observed in bladder cancer. Cancer-associated glycans can also be found in secreted proteins often shed into the bloodstream and urine, offering potential for non-invasive diagnosis [34,36–38].

Materials and Methods

Ethics Statement

All procedures were performed after patient's written informed consent and parental consent in the cases of children and approved by the Ethics Committee of Agostinho Neto University, Luanda, Angola and the Portuguese Institute For Oncology of Porto, Portugal (IPO-Porto). Clinico-pathological information was obtained from patients' clinical records and this information was anonymized.

Cases

This study includes 43 Angolan patients (30.2% male and 69.8% female) diagnosed as positive for *S. haematobium* infection in Sagrada Esperança Clinic (Luanda, Angola) and Hospital Américo Boavida (Luanda, Angola). The median age of the patients was 33.5 years (12–82 years) and, even though the majority resided in the rural areas around Luanda, they were born and had resided in provinces where *S. haematobium* is endemic.

Table 1. Pathological characterization of the samples.

Benign/Pre-malignant lesions	No tumour (n = 24)	With Tumour (n = 19)				
		P	PTLMP	UC	SCC	UC+SCC
Chronic Inflammation	6	1	-	4	-	1
Urothelial Hyperplasia	8	-	2	-	2	1
Epidermoid Metaplasia	7	-	-	-	5	2
Displasia	3	-	-	-	-	-

P: papilloma; PTLMP: papillary tumour of low malignant potential; UC: urothelial tumour; SCC: squamous cell carcinomas; UC+SCC: urothelial cancer and squamous cell carcinoma.

doi:10.1371/journal.pntd.0003329.t001

All patients presented irregularities of inner surface of bladder wall found by ultrasound scan and some of them showed a localized thickening of bladder wall protruding into the lumen. Therefore, the patients underwent cystoscopy and biopsy of the visualized mass and corresponding adjacent mucosa. The apparently normal urothelium of cases without noticeable tumour mass were also subjected to random biopsies. All biopsies of apparently normal urothelium and tumour-adjacent mucosa presented benign/pre-malignant lesions (chronic inflammation, urothelial hyperplasia, epidermoid metaplasia or dysplasia). Malignant lesions included papilloma (P), papillary urothelial neoplasm of low malignant potential (PUNLMP) and high-grade urothelial cell carcinoma (UCC), squamous cell carcinomas (SCC) or both (UCC+SCC) as summarized in Table 1. No differences were observed in age and sex distribution among the lesions/tumours. *S. haematobium* eggs were evident in the bladder of 27 (62.8%) cases, from these 7 (26%) presented tumours.

This study also includes a retrospective series of 22 non-*Schistosoma haematobium* infected patients diagnosed with urothelial cell carcinoma (10 low-grade tumours; 12 high-grade tumours, 5 presenting muscle invasion) and 4 squamous cell carcinomas presenting invasion of the *muscularis propria*, that have been previously characterized in relation to Ki-67 and sTn expressions by Ferreira *et al.* [31]. The patients (48.3% male and 51.7% female), mean age 69 years (45-89 years), underwent transurethral resection of the tumour in the Portuguese Institute for Oncology of Porto (IPO-Porto, Portugal), between July 2011 and May 2012. None had received prior adjuvant therapy. Six normal urothelium tissues of necropsied male individuals without bladder cancer history, within the same mean of age range, were also included.

Formalin fixed paraffin embedded biopsies and tumour sections stained with hematoxylin and eosin were examined and classified by an experienced pathologist under light microscopy, with reference to the WHO's 2004 grading criteria [39].

Immunohistochemistry

Formalin-fixed, paraffin-embedded (FFPE) tissue sections were screened for p53 accumulation, proliferation (Ki-67), and cancer-associated glycans sTn, sLe^a, and sLe^x by immunohistochemistry by the streptavidin/biotin peroxidase method using mouse monoclonal antibodies. The p53 protein was determined with clone DO-7 (Dako), Ki-67 with clone MIB-1 (Dako), sTn with clone TKH2 [31], sLe^a with clone (Abcam) and sLe^x with clone (Abcam). Briefly, 3 μm sections were deparaffinized with xylene, rehydrated with graded ethanol series, microwaved for 15 min in boiling citrate buffer (10 mM citric acid, 0.05% Tween 20, pH 6.0), and exposed to 3% hydrogen peroxide in methanol for 20 min. After blockage with BSA (5% in PBS), the antigens were identified with UltraVision Detection System (Thermo Scientific)

followed by incubation with 3,3-diaminobenzidine tetrahydrochloride (Impact Dab, Vector). Finally, the slides were counterstained with haematoxylin for 1 min. Colon carcinoma, tonsil and intestinal metaplasia tissue sections were tested in parallel as positive controls for, p53, Ki-67 and sialylated glycans, respectively. Negative control sections were included, involving sections probed with BSA (5% in PBS) devoid of primary antibody. The tissues were also treated with a neuraminidase from *Clostridium perfringens* (Sigma-Aldrich) to remove the sialic acid from the glycans and screened thereafter for sTn, sLe^a, and sLe^x, as described by Ferreira *et al.* [31].

A semi-quantitative approach was established to score the immunohistochemical labeling based on the intensity of staining and the percentage of cells that stained positively. The immunorexpression was assessed blindly by two independent observers and validated by an experienced pathologist. Whenever there was a disagreement, the slides were reviewed, and consensus was reached. Tumours were classified as p53 positive whenever expression was higher than 5% of the tissue section, as proliferative whenever Ki-67 expression was higher than 17%, as described by Santos *et al.* [26], and sTn, sLe^a and sLe^x were considered positive whenever the percentage of staining was ≥5% of the tissue sections [31,32,35].

Statistics

Statistical data analysis was performed using the IBM Statistical Package for Social Sciences—SPSS for Windows (version 20.0). Chi-square analysis was used to compare categorical variables. Correlation between cancer associated markers expression in pre-malignant lesions and concomitant tumours whenever present was performed using Pearson correlation test. A *P* value of ≤0.05 was considered to be statistically significant.

Results

Bladder tumours associated with *S. haematobium* infection were screened for the accumulation of p53, proliferation rate (Ki-67 > 17%) and cancer-associated sialylated glycans sTn, sLe^a and sLe^x (Fig. 1). We could observe that all the biomarkers were expressed throughout the different layers of the urothelium in benign/pre-malignant lesions and also homogeneously expressed in the tumours, irrespectively of their histological classification. As presented in Table 2, the majority of the bladder tumors exhibited p53 alterations (84%) and sLe^x overexpression (74%). Similar percentages of p53 and sLe^x could also be observed in bladder tumour sections from patients non-infected with *Schistosoma haematobium*, irrespectively of their histological natures. Conversely, non-proliferative phenotypes predominated among low malignant lesions (papilloma and PUNLMP; 100% of the cases)

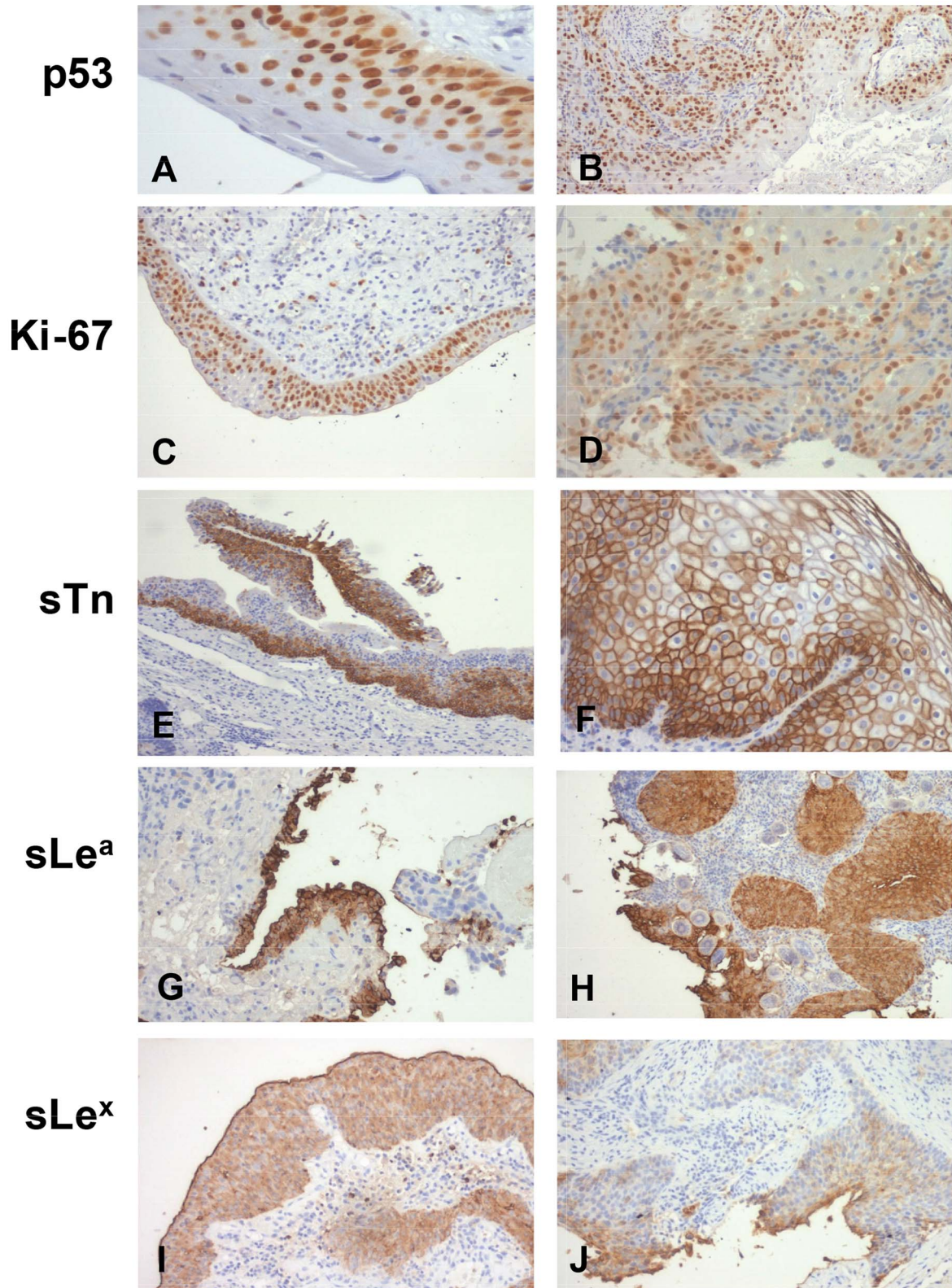


Fig. 1. Expression of cancer-associated biomarkers p53, Ki-67, sTn, sLe^a and sLe^x in bladder benign/pre-malignant lesions. A) Chronic inflammation; B) SCC; C) Chronic inflammation; D) SCC; E) Urothelial hyperplasia; F) Urothelial carcinoma; G) Dysplasia; H) SCC; I) Dysplasia; J) Urothelial carcinoma.

doi:10.1371/journal.pntd.0003329.g001

Table 2. Cancer associated markers expression in *Schistosoma haematobium*-associated bladder tumours.

Variables	Papilloma	PUNLMP	UCC	SCC	UCC+SCC	Total
	n (%)	n (%)	n (%)	n(%)	n(%)	n (%)
p53						
Negative	0 (0.0)	0 (0.0)	0 (0.0)	2 (28.6)	1 (25.0)	3 (15.8)
Positive (altered)	1 (100.0)	2 (100.0)	5 (100.0)	5 (71.4)	3 (75.0)	16 (84.2)
Ki-67						
Non proliferative	1 (100.0)	2 (100.0)	2 (40.0)	3 (42.9)	2 (50.0)	10 (52.6)
Proliferative (>17%)	0 (0.0)	0 (0.0)	3 (60.0)	4 (57.1)	2 (50.0)	9 (47.4)
sTn						
Negative	1 (100.0)	1 (50.0)	5 (100.0)	4 (57.1)	1 (25.0)	12 (63.2)
Positive	0 (0.0)	1 (50.0)	0 (0.0)	3 (42.9)	3 (75.0)	7 (36.8)
sLe^a						
Negative	-	1 (50.0)	2 (40.0)	4 (57.1)	2 (50.0)	10 (52.6)
Positive	-	1 (50.0)	3 (60.0)	3 (42.9)	2 (50.0)	9 (47.4)
sLe^x						
Negative	0 (0.0)	0 (0.0)	1 (20.0)	1 (16.7)	2 (50.0)	4 (22.2)
Positive	1 (100.0)	2 (100.0)	4 (80.0)	5 (83.3)	2 (50.0)	14 (77.8)

PUNLMP: Papillary Urothelial Neoplasm of Low Malignant Potential.

UCC: Urothelial Cell Carcinoma.

SCC: Squamous Cell Carcinoma.

doi:10.1371/journal.pntd.0003329.t002

when compared to the other groups comprehending more aggressive lesions presenting either invasion and/or high potential to invade the bladder wall (UCC, SCC, SCC+UC; approximately 50% of the cases) (Table 2). Contrasting with these findings, the percentage of proliferative phenotypes in the less aggressive non-schistosome associated lesions (low grade papillary tumours) was 30%. The percentage of proliferative phenotypes in more aggressive high grade lesions, including high grade urothelial cell and squamous cell carcinomas, was similar to described for *S. haematobium* infection related lesions. The sLe^a antigen was detected in approximately 50% of the *S. haematobium*-associated malignant lesions, irrespectively of their histology. These observations contrasted with the significantly higher expression of sLe^a observed in lesions not associated with the parasite (80% of the cases). Regarding the sTn antigen, its frequency varies among the histological groups of tumours, papilloma and UCC did not express the antigen, PUNLMP and SCC showed an equal distribution of negative and positive cases. However, the antigen was expressed by 75% of the cases presenting both an UCC and SCC phenotype, which is in accordance with our previous results for non-schistosome associated bladder tumors, where sTn antigen was present in approximately 75% of aggressive bladder tumors (high grade papillary tumors and muscle invasive bladder cancer) [31]. Altogether, the studied biomarkers, with the exception of sLe^a presented similar expressions in both schistosome and non-schistosome associated bladder tumors.

Benign/pre-malignant lesions associated with *S. haematobium* infection, irrespectively of having been isolated from urothelium without malignant lesions or tumour adjacent mucosa, were also studied (Fig. 1). The p53 protein was altered in the majority of the benign/pre-malignant lesions (88%), predominantly in those showing cellular alterations (urothelial hyperplasia, epidermoid metaplasia, dysplasia; Table 3). Approximately 40% of the cases also presented a high proliferation index (Ki-67>17%), although

this was more pronounced among epidermoid metaplasia (64.3%, Table 3). The sTn antigen was detected in one third of the lesions (32.6%), however it was mainly absent in chronic inflammation cases and when compared with all the others a trend association was observed ($P = 0.067$). The sialylated Lewis antigens sLe^a and sLe^x were detected in the majority of the cases (>80%). However, the percentage of sLe^a positive cases was higher among the cases with urothelial hyperplasia while sLe^x was present in all dysplasia cases (4/4; Table 3). Furthermore, none of the normal urothelium tissues were positive for the studied biomarkers, demonstrating its cancer-associated nature.

Table 4 further highlights the relationship between the studied markers in the benign/pre-malignant lesions identified in apparently normal bladder mucosa and those found in tumor adjacent mucosa. The distribution of the p53 alterations, sTn and sLe^x antigens overexpression was similar between the two groups. However, a higher number of non-proliferative cases were observed in sole benign/pre-malignant lesions when compared with the lesions in tumour adjacent mucosa (73.9% vs 42.1%, $P = 0.037$; Table 4). On the other hand, sLe^a expression was more frequent in lesions without tumour than with concomitant tumours (91.7% vs 66.7%; $P = 0.03$). Altogether this data shows that the majority of the benign/pre-malignant lesions associated with *S. haematobium* infection share alterations in p53 expression and sLe^x with bladder tumors. The predominance of sLe^a in pre-malignant lesions, in particular in bladders that do not present signs of malignant transformation, suggesting that this glycan may be a molecular alteration associated with early carcinogenesis pathways.

Table 5 further shows the correlation between the expression of the biomarkers in the tumours and adjacent mucosa lesions. This showed a correlation between the expression of p53, sTn, sLe^a and sLe^x both in the lesion and tumour, denoting that the tumour adjacent mucosa reflects the molecular alterations found in *S. haematobium*-associated tumours.

Table 3. Cancer associated markers expression in benign/pre-malignant lesions.

Variables	Chronic Inflammation	Urothelial Hyperplasia	Epidermoid Metaplasia	Dysplasia	Total
	n (%)	n (%)	n (%)	n(%)	n (%)
p53					
Negative	3 (25.0)	1 (7.7)	1 (7.7)	0 (0.0)	5 (11.9)
Positive (altered)	9 (75.0)	12 (92.3)	12 (92.3)	4 (100.0)	37 (88.1)
Ki-67					
Non proliferative	6 (54.5)	11 (84.6)	5 (35.7)	3 (75.0)	25 (59.5)
Proliferative (>17%)	5 (45.5)	2 (15.4)	9 (64.3)	1 (25.0)	17 (40.5)
sTn					
Negative	11(91.7)	8 (61.5)	8 (57.1)	2 (50.0)	29 (67.4)
Positive	1 (8.3)	5 (38.5)	6 (42.9)	2 (50.0)	14 (32.6)
sLe^a					
Negative	4 (33.3)	1 (7.7)	3 (21.4)	1 (25.0)	8 (19.0)
Positive	8 (67.7)	12 (92.3)	11 (78.6)	3 (75.0)	34 (81.0)
sLe^x					
Negative	3 (25.0)	2 (15.4)	3 (21.4)	0 (0.0)	8 (18.6)
Positive	12 (75.0)	11 (84.6)	11 (78.6)	4 (100.0)	35 (81.4)

doi:10.1371/journal.pntd.0003329.t003

Moreover, it was observed that 60% of the cases presented *S. haematobium* eggs embedded in the bladder urothelium, predominantly in benign/pre-malignant lesions without the presence of tumour (75% vs 45%). However, no associations were found between the expression of the studied markers and the presence and absence of the eggs in the bladder at the time of diagnosis. Altogether, these findings suggest that the presence of eggs in the

bladder may be an early event leading to carcinogenesis. Whether the disorganization of the tissue associated with malignant transformation may favor their release into the environment, therefore explaining is lower presence in malignant tissues and consequently the lack of correlation with the studied biomarkers, warrants further investigation. It was further observed that the majority of the cases (>75%) presented sLe^a and sLe^x positive eggs

Table 4. Relation between cancer associated markers in benign/pre-malignant lesions as sole lesions and in tumour adjacent mucosa.

Variables	Benign/Pre-malignant		p [*]
	As sole lesion	In tumour adjacent mucosa	
	n (%)	n (%)	
p53			
Negative	1 (4.2)	4 (22.2)	0.146
Positive (altered)	23 (95.8)	14 (77.8)	
Ki-67			
Non proliferative	17 (73.9)	8 (42.1)	0.037
Proliferative (>17%)	6 (26.1)	11 (57.9)	
sTn			
Negative	15 (62.5)	14 (73.7)	0.437
Positive	9 (37.5)	5 (26.3)	
sLe^a			
Negative	2 (8.3)	7 (36.8)	0.030
Positive	22 (91.7)	12 (63.2)	
sLe^x			
Negative	4 (16.7)	4 (21.1)	0.714
Positive	20 (83.3)	15 (78.9)	

*: Chi-square test;

doi:10.1371/journal.pntd.0003329.t004

Table 5. Correlation between cancer associated marker expression in the lesions and in the concomitant tumour.

Bladder Cancer		Ki-67		sTn		sLe ^a		sLe ^x	
Benign/Pre-malignant Lesions	p53	Correlation coefficient	P value	Correlation Coefficient	P value	Correlation Coefficient	P value	Correlation Coefficient	P value
	p53	0.484	0.036	-0.060	0.814	0.033	0.896	0.033	0.901
	Ki-67	-0.057	0.811	0.382	0.106	0.025	0.918	-0.426	0.078
	sTn	-0.031	0.898	-0.378	0.171	0.457	0.049	0.372	0.128
	sLe ^a	0.016	0.945	-0.236	0.346	0.175	0.486	0.471	0.048
	sLe ^x	0.140	0.556	-0.027	0.912	0.015	0.950	0.000	1.000

doi:10.1371/journal.pntd.0003329.t005

and approximately half displayed eggs expressing the sTn antigen, suggesting some degree of mimicry of host glycosylation patterns (Fig. 2). The expression of sialylated glycans was validated by observing the loss of reactivity against anti-glycans monoclonal antibodies after treatment of the tissue with a neuraminidase. It was noteworthy that both positive and negative eggs for these antigens could be found within the same biopsy, denoting some degree of heterogeneity at this level.

Discussion

In contrast to the extensive cytogenetic and molecular signatures existing for urothelial cell carcinoma, mainly found in western populations, little is known about the molecular alterations underlying the development of *S. haematobium*-associated bladder cancer. Nevertheless, such information is pivotal to support a definitive association between schistosomiasis and bladder cancer development that, until now, has been mostly supported by epidemiological studies. Furthermore, it may provide means for an early identification of infected populations at a risk of developing bladder cancer, which is a particular critical matter since the majority of the cases are detected at a late stage due the absence of appropriate medical facilities.

Herein we have screened a series of schistosome-associated bladder tumours, their adjacent mucosa and also biopsies of apparently normal urothelia, for bladder cancer biomarkers. We also included a series of bladder tumours of non-schistosome etiology and normal urothelium sections in an attempt to highlight common molecular alterations. The majority of the patients enrolled in this study were females, and this is in clear contrast with the higher prevalence of bladder cancer among men in western populations. This may be explained by social and working habits of these populations living in the proximity of contaminated water courses. Also, the majority of the cases of bladder cancer were observed among young adults, which is rare for urothelial carcinomas of chemical etiology [40]. These findings were in accordance with previous observations from other authors [5,8] and support a role for the parasite in cancer development.

The evaluated biomarkers included the accumulation of oncoprotein p53 [22–24] and tumour proliferation index given by Ki-67 overexpression [26–28], two events associated with the aggressiveness of urothelial bladder cancer. Likewise, we observed alterations in p53 in the majority of schistosome-associated bladder tumours, irrespectively of their histopathological nature, which is in agreement with our findings and previous observations for non-schistosome associated tumours [25,41]. In addition, these alterations were not observable in the normal urothelium, denoting its cancer-related nature. The association between the accumulation of p53 in the urothelium and infection with *S. haematobium* reinforces the notion that the parasite may contribute to profound alterations in urothelial cells, ultimately leading to aggressive forms of cancer. This hypothesis is further supported by the observations reported by Botelho and colleagues [8,19]. According to these authors, the exposure to *S. haematobium* antigens down-regulates cell apoptotic pathways, which would ultimately lead to the development of cancer [42]. Regarding proliferation, Ki-67 overexpression was lower in low malignant potential lesions when compared to urothelial and squamous cell carcinomas. This is in accordance with previous findings associating the degree of severity of bladder malignant lesions with higher proliferation degrees and potential to evolve to more aggressive forms of cancer [26,31]. Since several markers were evaluated and a large numbers of comparisons were performed, the false discovery rate should be considered. Nevertheless, if all

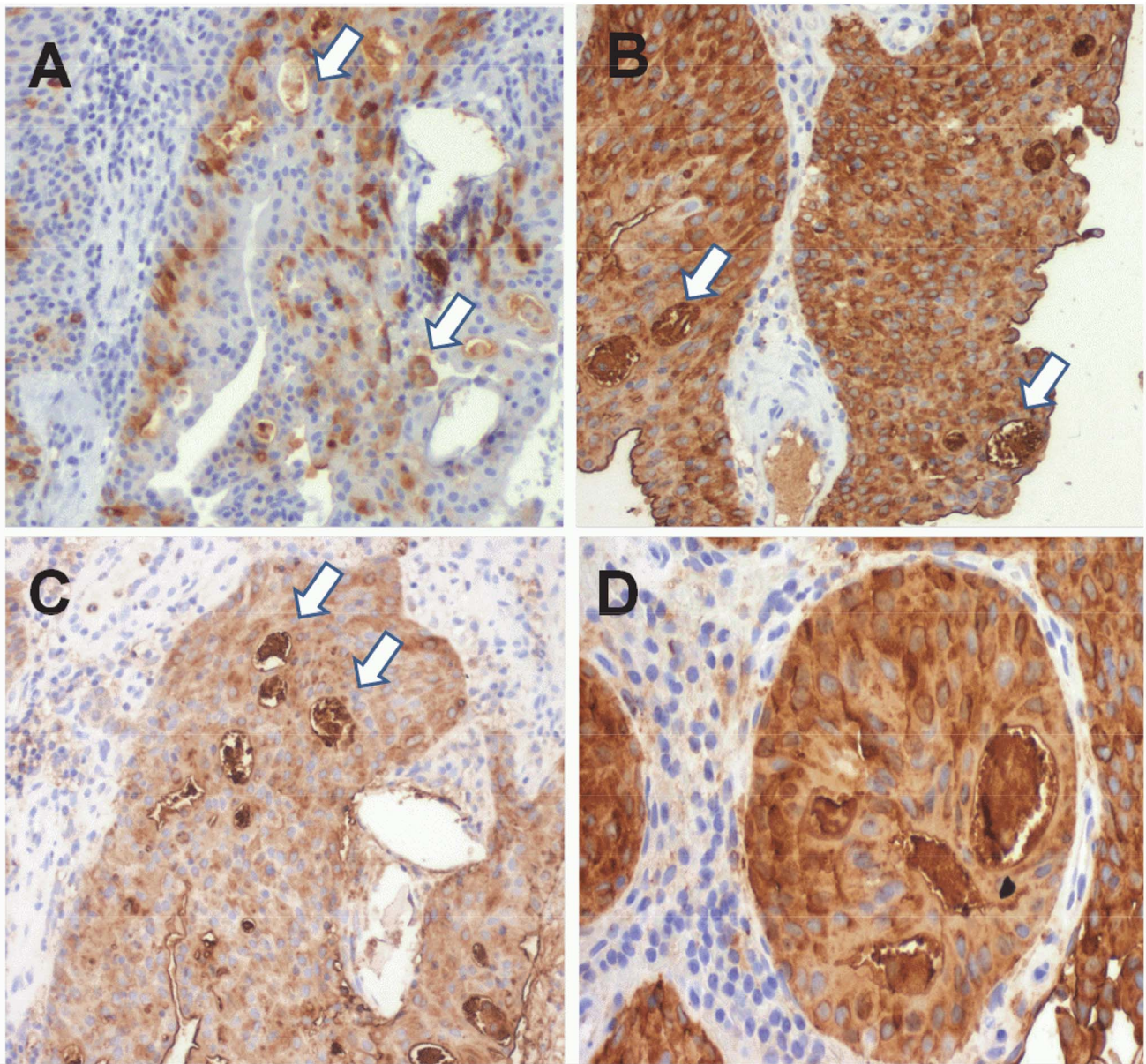


Fig. 2. Expression of cancer-associated glycans antigens A) sTn, B)sLea and C-D) sLe^x in *Schistosoma haematobium* eggs. The white arrows point to positive eggs. The treatment of the tissue sections with a α -neuraminidase led to the loss of immunoreactivity, confirming the validating the structural assignment. doi:10.1371/journal.pntd.0003329.g002

the null hypotheses are true, 5% of the comparisons are expected to present uncorrected P values lower than 0.05 by chance alone. However, our study present P values under 0.05 in 20% of the comparisons, thereby demonstrating the statistic value of the observations.

The expression of cancer-associated cell-surface sialylated glycans sTn, sLe^a and sLe^x was addressed, to our knowledge, for the first time in *S. haematobium*-associated bladder tumours. Glycosylation is the main and more complex posttranslational modification of membrane-bound and secreted proteins. Glycans plays a key role in protein folding and stability [43], mediate several physiological and pathological conditions, which include cell-cell adhesion, host-pathogen interactions, cell differentiation, migration and cell trafficking, signaling and immune recognition [44,45]. During malignant transformation, some cells change their

glycosylation profile in response to microenvironment challenge, namely paracrine signaling, hypoxia among other events [29]. The sTn antigen, resulting from a premature stop in the O -glycosylation of proteins by sialylation, has been found associated with high-grade bladder non-muscle invasive papillary tumours and muscle invasive lesions [30,31]. It has been found to enhance bladder cancer cells capability to invade and migrate [31] and acts as a suppressor of effective dendritic cell immune responses against bladder cancer cells [46]. Despite the low number of cases, this study suggests that the sTn antigen is predominantly expressed by more aggressive forms of *S. haematobium* associated tumours (UCC+SCC). These observations are in accordance with our previous results from non-schistosome associated bladder tumors, where sTn expression is predominant found in high grade papillary tumors and muscle invasive bladder cancer of non-schistosome

etiology [31]. The sialylated Lewis blood group determinants sLe^a and sLe^x may be found as terminal structures of both proteins and lipids and have been associated with metastatic potential and poor overall survival in several solid tumours [47–50]. The sLe^a antigen has also been found both in pre-malignant bladder lesions, non-invasive and invasive bladder urothelial carcinomas [32–34]; however no association with recurrence, invasion or metastasis has been reported. On the other hand, its structural isomer sLe^x antigen was observed in muscle invasive urothelial carcinomas associated with invasion, metastasis and recurrence [35,36]. This study now demonstrates that the majority of schistosome-associated bladder tumours expressed the sLe^x antigen, suggesting a high degree of malignant potential. However, no defined expression pattern could be drawn for sLe^a. Similarly, we also found significant overexpression of the sLe^x antigen in non-schistosome associated tumours but also a more pronounced expression of sLe^a. However, none of these antigens were not observed in the healthy urothelium, reinforcing its malignant nature.

The analysis of benign/pre-malignant lesions, irrespectively of their origin, showed a predominance of p53, sLe^a and sLe^x positive cases. Noteworthy, sole lesions were predominantly non-proliferative when compared to lesions in the vicinity of tumours, suggesting that high proliferation may be mainly a characteristic of the tumour. Whether proliferative benign/pre-malignant lesions present a higher risk of evolving to bladder cancer warrants validation in future studies.

On the other hand, the sLe^a antigen was predominantly expressed among sole lesions, denoting this antigen may constitute a marker of early bladder carcinogenesis mediated by *S. haematobium*. Reinforcing this observations, Kajiwara et al. has described that sLe^a is inversely associated with the grade of atypia while its non-sialylated form DU-PAN-2 correlates with the grade of atypia in urothelial carcinomas; these authors also observed that the disappearance of sLe^a and the presence of DU-PAN-2 correlates with high malignant potential [36]. We further observed that the expression of cancer-associated antigens in the tumour was correlated with the expression denoting a field effect that affects the entire bladder. Again, this correlation was not observed for proliferation, reinforcing this event seems to be mainly a characteristic of malignant lesions. Taken together, these observations highlight that pre-malignant lesions present molecular alterations associated with malignancy, and that p53 and sLe^x are surrogate markers of bladder cancerization associated with infection with schistosomes. More studies should be conducted to validate the potential of sLe^a has a surrogate marker of infection that may be helpful in the monitoring of asymptomatic colonization. A glycoproteomic/lipidomic characterization of bladder tumours is ongoing, which is expected to provide their necessary insights about the biologic role of the studied glycans in bladder cancer.

These observations are also likely to be of consequence in the clinic of great importance since benign and pre-malignant lesions such as those included in this study are challenging to diagnose by cystoscopy. We emphasize the potential of glycans in context, as they can be found at the cell-surface, thus easily accessible to antibodies and other carbohydrate ligands and consequently be explored in cancer detection imaging [51,52]. They are often secreted into the blood stream and urine and therefore readily accessible in non-invasive diagnosis [34,37,38,53]. Non-invasive diagnostic procedures are critical as they facilitate large scale screening of the populations in endemic regions where imaging/radiological facilities are not likely to be available.

Glycans are also important mediators in the colonization of humans by parasites, as they provide means for efficient adhesion and immune escape [54,55]. As such, we have also addressed the expression of cancer-associated glycans in eggs of *S. haematobium* embedded in the bladders. We observed, for the first time, that the parasite eggs express sLe^a and sLe^x antigens, in mimicry of human leukocytes. These glycans are specific ligands for E-selectin, a cell adhesion molecule expressed only on endothelial cells and activated by cytokines, such as IL-1 and TNF- α , released by damaged cells during the course of inflammation [56,57]. Cytokines induce the overexpression of E-selectin by endothelial cells on nearby blood vessels that are responsible for recruiting leukocytes in a sLe^a/sLe^x-mediated manner [56,57]. These glycans bind weakly to E-selectin which allows leukocytes to “roll” along the internal surface of the blood vessel into the injury site by shear forces of blood flow [58]. Similar events may drive the recruitment of *S. haematobium* eggs to the bladder wall, a critical step in the developmental cycle of this pathogen. Similar strategies have been observed in nature, namely by the Gram-negative *Porphyromonas gingivalis* to adhere to human umbilical vein endothelial cells [59]. Several authors have also hypothesized that E-selectin-sialylated glycans interactions may contribute to the hematogenous dissemination of sLe^a/sLe^x expressing tumour cells and explain its association with metastasis [29,47,49,60]. Similarly, for bladder tumors, the identification of the parasite glycoproteins and/or glycolipids presenting these alterations may bring insights on this matter and ultimately contribute to design strategies to control infection. In addition, the identification of the glycoproteins and/or glycolipids presenting these alterations may yield insights into this infection-associated cancer and ultimately contribute to design strategies to control infection. Glycoproteomic studies will greatly benefit from the recent mapping of the parasite genome [61]. We further report that some eggs express the sTn antigen, an oncofetal antigen that, we and others have shown to play a key role in immune escape [46]. The sLe^x expression has also been found to reduce the susceptibility of tumour cells to hepatic sinusoidal lymphocyte-mediated killing, and thus, may facilitate the ability of the tumor cells to metastasize to the liver [62]. Similarly, the expression of these glycans by *S. haematobium* may provide the necessary means for immune escape either by modulation of the immune system or by molecular mimicry of the host, a common survival strategy among parasites [63,64].

To conclude p53 and sialylated Lewis blood group determinants may be surrogate markers of cancerization associated with chronic infection with *S. haematobium*. By drawing attention to common molecular pathways underlying these two events, this study provides one of the missing links associating parasite infection and cancer development. Further studies which include a larger sample of *Schistosoma haematobium* positive cases will be needed to determine a panel of biomarkers with the potential to identify bladder cancer precursor lesions. Finally, this report provides insights on the glycosylation patterns of *S. haematobium* eggs and discusses a possible model for the recruitment of eggs to the bladder wall that suggests this schistosome has evolved glycosylation patterns that mimic those of its human host. These insights may help guiding the development of novel therapeutic strategy, namely glycoconjugate vaccines.

Acknowledgments

We thank Dr. Rui Pinto (Clínica Sagrada Esperança, Angola), the Urology Department of Hospital Américo Boavida in Luanda and the National Cancer Center of Angola and Professor Celso Reis (IPATIMUP, Porto, Portugal) for kindly providing the anti-sTn antigen monoclonal antibody TKH2.

Author Contributions

Conceived and designed the experiments: JS EF JAF LLS. Performed the experiments: JS EF AP AT JAF BP. Analyzed the data: JS EF JAF LL CL

References

- Abdulmir AS, Hafidh RR, Kadhim HS, Abubakar F (2009) Tumor markers of bladder cancer: the schistosomal bladder tumors versus non-schistosomal bladder tumors. *J Exp Clin Cancer Res* 28: 27. Available: <http://www.pubmedcentral.nih.gov/articlerender.fcgi?artid=2650688&tool=pmcentrez&rendertype=abstract>. Accessed 7 November 2013.
- Van der Werf MJ, de Vlas SJ, Brooker S, Looman CW, Nagelkerke NJ, et al. (2003) Quantification of clinical morbidity associated with schistosome infection in sub-Saharan Africa. *Acta Trop* 86: 125–139. Available: <http://linkinghub.elsevier.com/retrieve/pii/S0001706X03000299>. Accessed 8 February 2014.
- Steinmann P, Keiser J, Bos R, Tanner M, Utzinger J (2006) Schistosomiasis and water resources development: systematic review, meta-analysis, and estimates of people at risk. *Lancet Infect Dis* 6: 411–425. Available: <http://www.ncbi.nlm.nih.gov/pubmed/16790382>.
- Hotez PJ, Kamath A (2009) Neglected tropical diseases in sub-saharan Africa: review of their prevalence, distribution, and disease burden. *PLoS Negl Trop Dis* 3: e412. Available: <http://www.pubmedcentral.nih.gov/articlerender.fcgi?artid=2727001&tool=pmcentrez&rendertype=abstract>. Accessed 7 February 2014.
- Cummings R, Nyame A (1996) Glycobiology of schistosomiasis. *FASEB J* 10: 838–848. Available: <http://www.fasbj.org/content/10/8/838.short>. Accessed 20 May 2014.
- Shebel HM, Elsayes KM, Abou El, Atta HM, Elguindy YM, El-Diasty TA (n.d.) Genitourinary schistosomiasis: life cycle and radiologic-pathologic findings. *Radiographics* 32: 1031–1046. Available: <http://www.ncbi.nlm.nih.gov/pubmed/22786992>. Accessed 10 May 2014.
- Fu C-L, Odegaard JI, Herbert DR, Hsieh MH (2012) A novel mouse model of *Schistosoma haematobium* egg-induced immunopathology. *PLoS Pathog* 8: e1002605. Available: <http://www.pubmedcentral.nih.gov/articlerender.fcgi?artid=3315496&tool=pmcentrez&rendertype=abstract>. Accessed 30 April 2014.
- Botelho MC, Oliveira P a, Lopes C, Correia da Costa JM, Machado JC (2011) Urothelial dysplasia and inflammation induced by *Schistosoma haematobium* total antigen instillation in mice normal urothelium. *Urol Oncol* 29: 809–814. Available: <http://www.ncbi.nlm.nih.gov/pubmed/19945304>. Accessed 5 November 2013.
- Salim EI, Morimura K, Menesi A, El-Lity M, Fukushima S, et al. (2008) Elevated oxidative stress and DNA damage and repair levels in urinary bladder carcinomas associated with schistosomiasis. *Int J Cancer* 123: 601–608. Available: <http://www.ncbi.nlm.nih.gov/pubmed/18478569>. Accessed 10 May 2014.
- Swierczynski SL, Epstein JI (2002) Prognostic significance of atypical papillary urothelial hyperplasia. *Hum Pathol* 33: 512–517. Available: <http://www.ncbi.nlm.nih.gov/pubmed/12094376>. Accessed 10 May 2014.
- IARC (2012) A review of human carcinogens. *IARC Monogr Eval Carcinog Risks Hum* 100 B: 1–441.
- Bedwani R, Renganathan E, El Kwshy F, Braga C, Abu Seif HH, et al. (1998) Schistosomiasis and the risk of bladder cancer in Alexandria, Egypt. *Br J Cancer* 77: 1186–1189. Available: <http://www.pubmedcentral.nih.gov/articlerender.fcgi?artid=2150141&tool=pmcentrez&rendertype=abstract>. Accessed 10 May 2014.
- Zheng Y-L, Amr S, Saleh DA, Dash C, Ezzat S, et al. (2012) Urinary bladder cancer risk factors in Egypt: a multicenter case-control study. *Cancer Epidemiol Biomarkers Prev* 21: 537–546. Available: <http://www.pubmedcentral.nih.gov/articlerender.fcgi?artid=3297723&tool=pmcentrez&rendertype=abstract>. Accessed 10 May 2014.
- Salem S, Mitchell RE, El-Alim El-Dorey A, Smith JA, Barocas DA (2011) Successful control of schistosomiasis and the changing epidemiology of bladder cancer in Egypt. *BJU Int* 107: 206–211. Available: <http://www.ncbi.nlm.nih.gov/pubmed/21208365>. Accessed 10 May 2014.
- Rambau PF, Chalya PL, Jackson K (2013) Schistosomiasis and urinary bladder cancer in North Western Tanzania: a retrospective review of 185 patients. *Infect Agent Cancer* 8: 19. Available: <http://www.pubmedcentral.nih.gov/articlerender.fcgi?artid=3665673&tool=pmcentrez&rendertype=abstract>. Accessed 10 May 2014.
- Herrera LA, Benitez-Bribiesca L, Mohar A, Ostrosky-Wegman P (2005) Role of infectious diseases in human carcinogenesis. *Environ Mol Mutagen* 45: 284–303. Available: <http://www.ncbi.nlm.nih.gov/pubmed/15744742>. Accessed 10 May 2014.
- Hodder SL, Mahmoud AA, Sorenson K, Weinert DM, Stein RL, et al. (2000) Predisposition to urinary tract epithelial metaplasia in *Schistosoma haematobium* infection. *Am J Trop Med Hyg* 63: 133–138. Available: <http://www.ncbi.nlm.nih.gov/pubmed/11388504>. Accessed 10 May 2014.
- Leutscher PDC, Ramarokoto C-E, Hoffmann S, Jensen JS, Ramaniraka V, et al. (2008) Coexistence of urogenital schistosomiasis and sexually transmitted infection in women and men living in an area where *Schistosoma haematobium* is endemic. *Clin Infect Dis* 47: 775–782. Available: <http://www.ncbi.nlm.nih.gov/pubmed/18680415>. Accessed 10 May 2014.
- Botelho M, Oliveira P, Gomes J, Gartner F, Lopes C, et al. (2009) Tumorigenic effect of *Schistosoma haematobium* total antigen in mammalian cells. *Int J Exp Pathol* 90: 448–453. Available: <http://www.pubmedcentral.nih.gov/articlerender.fcgi?artid=2741155&tool=pmcentrez&rendertype=abstract>. Accessed 5 May 2014.
- Botelho M, Ferreira AC, Oliveira MJ, Domingues A, Machado JC, et al. (2009) *Schistosoma haematobium* total antigen induces increased proliferation, migration and invasion, and decreases apoptosis of normal epithelial cells. *Int J Parasitol* 39: 1083–1091. Available: <http://www.ncbi.nlm.nih.gov/pubmed/19285502>. Accessed 10 May 2014.
- Zhong X, Isharwal S, Naples JM, Shiff C, Veltri RW, et al. (2013) Hypermethylation of genes detected in urine from Ghanaian adults with bladder pathology associated with *Schistosoma haematobium* infection. *PLoS One* 8: e59089. Available: <http://www.pubmedcentral.nih.gov/articlerender.fcgi?artid=3601097&tool=pmcentrez&rendertype=abstract>. Accessed 11 November 2013.
- Network TCGAR (2014) Comprehensive molecular characterization of urothelial bladder carcinoma. *Nature* 507: 315–322. Available: <http://www.ncbi.nlm.nih.gov/pubmed/24476821>. Accessed 29 April 2014.
- Hemal AK, Khaitan A, Dinda AK, Gupta NP, Seth A, et al. (2003) Prognostic significance of p53 nuclear overexpression in patients of muscle invasive urinary bladder carcinoma treated with cystectomy. *Urol Int* 70: 42–46. Available: <http://www.ncbi.nlm.nih.gov/pubmed/12566814>. Accessed 10 May 2014.
- Vardar E, Gunlusoy B, Minareci S, Postaci H, Ayder AR (2006) Evaluation of p53 nuclear accumulation in low- and high-grade (WHO/ISUP classification) transitional papillary carcinomas of the bladder for tumor recurrence and progression. *Urol Int* 77: 27–33. Available: <http://www.ncbi.nlm.nih.gov/pubmed/16825812>. Accessed 10 May 2014.
- Badr KM, Nolen JDL, Derose PB, Cohen C (2004) Muscle invasive schistosomal squamous cell carcinoma of the urinary bladder: frequency and prognostic significance of p53, BCL-2, HER2/neu, and proliferation (MIB-1). *Hum Pathol* 35: 184–189. Available: <http://www.ncbi.nlm.nih.gov/pubmed/14991535>. Accessed 10 May 2014.
- Santos L, Amaro T, Costa C, Pereira S, Bento MJ, et al. (2003) Ki-67 index enhances the prognostic accuracy of the urothelial superficial bladder carcinoma risk group classification. *Int J Cancer* 105: 267–272. Available: <http://www.ncbi.nlm.nih.gov/pubmed/12673690>. Accessed 10 May 2014.
- Margulis V, Lotan Y, Karakiewicz PI, Fradet Y, Ashfaq R, et al. (2009) Multi-institutional validation of the predictive value of Ki-67 labeling index in patients with urinary bladder cancer. *J Natl Cancer Inst* 101: 114–119. Available: <http://www.ncbi.nlm.nih.gov/pubmed/19141773>. Accessed 10 May 2014.
- Ding W, Gou Y, Sun C, Xia G, Wang H, et al. (2014) Ki-67 is an independent indicator in non-muscle invasive bladder cancer (NMIBC); combination of EORTC risk scores and Ki-67 expression could improve the risk stratification of NMIBC. *Urol Oncol* 32: 42.e13–9. Available: <http://www.ncbi.nlm.nih.gov/pubmed/24360660>. Accessed 10 May 2014.
- Dall'Olio F, Malagolini N, Trinchera M, Chiricolo M (2012) Mechanisms of cancer-associated glycosylation changes. *Front Biosci (Landmark Ed)* 17: 670–699. Available: <http://www.ncbi.nlm.nih.gov/pubmed/22201768>. Accessed 10 May 2014.
- Lima L, Severino PF, Silva M, Miranda A, Tavares A, et al. (2013) Response of high-risk of recurrence/progression bladder tumours expressing sialyl-Tn and sialyl-6-T to BCG immunotherapy. *Br J Cancer* 109: 2106–2114. Available: <http://www.ncbi.nlm.nih.gov/pubmed/24064971>. Accessed 29 April 2014.
- Ferreira JA, Videira P a, Lima L, Pereira S, Silva M, et al. (2013) Overexpression of tumour-associated carbohydrate antigen sialyl-Tn in advanced bladder tumours. *Mol Oncol* 7: 719–731. Available: <http://www.ncbi.nlm.nih.gov/pubmed/23567325>.
- Nagao K, Itoh Y, Fujita K, Fujime M (2007) Evaluation of urinary CA19-9 levels in bladder cancer patients classified according to the combinations of Lewis and Secretor blood group genotypes. *Int J Urol* 14: 795–799. Available: <http://www.ncbi.nlm.nih.gov/pubmed/17760744>. Accessed 10 May 2014.
- Pal K, Roy S, Mondal SA, Chatterjee U, Tiwari P, et al. (2011) Urinary level of CA19-9 as a tumor marker in urothelial carcinoma of the bladder. *Urol J* 8: 203–208. Available: <http://www.ncbi.nlm.nih.gov/pubmed/21910099>. Accessed 10 May 2014.
- Hegele A, Mecklenburg V, Varga Z, Olbert P, Hofmann R, et al. (2010) CA19-9 and CEA in transitional cell carcinoma of the bladder: serological and immunohistochemical findings. *Anticancer Res* 30: 5195–5200. Available: <http://www.ncbi.nlm.nih.gov/pubmed/21187512>. Accessed 10 May 2014.
- Numahata K, Satoh M, Handa K, Saito S, Ohyama C, et al. (2002) Sialosyl-Le(x) expression defines invasive and metastatic properties of bladder carcinoma. *Cancer* 94: 673–685. Available: <http://www.ncbi.nlm.nih.gov/pubmed/11857299>. Accessed 10 May 2014.

LLS. Contributed reagents/materials/analysis tools: JS JMCdC CL LLS. Wrote the paper: JAF LL PJB LLS. Revised the manuscript: JMCC CL LLS.

36. Kajiwara H, Yasuda M, Kumaki N, Shibayama T, Osamura Y (2005) Expression of carbohydrate antigens (SSEA-1, sialyl-Lewis X, DU-PAN-2 and CA19-9) and E-selectin in urothelial carcinoma of the renal pelvis, ureter, and urinary bladder. *Tokai J Exp Clin Med* 30: 177–182. Available: <http://www.ncbi.nlm.nih.gov/pubmed/16285609>. Accessed 10 May 2014.
37. Anastasi E, Granato T, Falzarano R, Storelli P, Ticino A, et al. (2013) The use of HE4, CA125 and CA72-4 biomarkers for differential diagnosis between ovarian endometrioma and epithelial ovarian cancer. *J Ovarian Res* 6: 44. Available: <http://www.pubmedcentral.nih.gov/articlerender.fcgi?artid=3701500&tool=pmcentrez&rendertype=abstract>. Accessed 10 May 2014.
38. Shimada H, Noie T, Ohashi M, Oba K, Takahashi Y (2014) Clinical significance of serum tumor markers for gastric cancer: a systematic review of literature by the Task Force of the Japanese Gastric Cancer Association. *Gastric Cancer* 17: 26–33. Available: <http://www.ncbi.nlm.nih.gov/pubmed/23572188>. Accessed 10 May 2014.
39. Babjuk M, Burger M, Zigeuner R, Shariat SF, van Rhijn BWG, et al. (2013) EAU guidelines on non-muscle-invasive urothelial carcinoma of the bladder: update 2013. *Eur Urol* 64: 639–653. Available: <http://www.ncbi.nlm.nih.gov/pubmed/23827737>. Accessed 12 May 2014.
40. Babjuk M, Oosterlinck W, Sylvester R, Kaasinen E, Böhle A, et al. (2011) EAU guidelines on non-muscle-invasive urothelial carcinoma of the bladder, the 2011 update. *Eur Urol* 59: 997–1008. Available: <http://www.ncbi.nlm.nih.gov/pubmed/21458150>. Accessed 29 April 2014.
41. Weintraub M, Khaled H, Zekri A, Bahnasi A, Eissa S, et al. (1995) P53 mutations in Egyptian bladder-cancer. *Int J Oncol* 7: 1269–1274. Available: <http://www.ncbi.nlm.nih.gov/pubmed/21552959>. Accessed 10 May 2014.
42. Botelho MC, Machado JC, Brindley PJ, Correia da Costa JM (2011) Targeting molecular signaling pathways of *Schistosoma haematobium* infection in bladder cancer. *Virulence* 2: 267–279. Available: <http://www.landesbioscience.com/journals/virulence/article/16734/>. Accessed 8 May 2014.
43. Shental-Bechor D, Levy Y (2009) Folding of glycoproteins: toward understanding the biophysics of the glycosylation code. *Curr Opin Struct Biol* 19: 524–533. Available: <http://www.ncbi.nlm.nih.gov/pubmed/19647993>. Accessed 10 May 2014.
44. Ohtsubo K, Marth JD (2006) Glycosylation in cellular mechanisms of health and disease. *Cell* 126: 855–867. Available: <http://www.ncbi.nlm.nih.gov/pubmed/16959566>. Accessed 29 April 2014.
45. Haltiwanger RS, Lowe JB (2004) Role of glycosylation in development. *Annu Rev Biochem* 73: 491–537. Available: <http://www.ncbi.nlm.nih.gov/pubmed/15189151>. Accessed 8 May 2014.
46. Carrascal MA, Severino PF, Guadalupe Cabral M, Silva M, Ferreira JA, et al. (2014) Sialyl Tn-expressing bladder cancer cells induce a tolerogenic phenotype in innate and adaptive immune cells. *Mol Oncol* 8: 753–765. Available: <http://www.ncbi.nlm.nih.gov/pubmed/24656965>. Accessed 10 May 2014.
47. Gakhar G, Navarro VN, Jurish M, Lee GY, Tagawa ST, et al. (2013) Circulating tumor cells from prostate cancer patients interact with E-selectin under physiologic blood flow. *PLoS One* 8: e85143. Available: <http://www.pubmedcentral.nih.gov/articlerender.fcgi?artid=3874033&tool=pmcentrez&rendertype=abstract>. Accessed 10 May 2014.
48. Komatsu H, Mizuguchi S, Izumi N, Chung K, Hanada S, et al. (2013) Sialyl Lewis X as a predictor of skip N2 metastasis in clinical stage IA non-small cell lung cancer. *World J Surg Oncol* 11: 309. Available: <http://www.ncbi.nlm.nih.gov/pubmed/24313932>. Accessed 10 May 2014.
49. Julien S, Ivetic A, Grigoriadis A, Qizic D, Burford B, et al. (2011) Selectin ligand sialyl-Lewis x antigen drives metastasis of hormone-dependent breast cancers. *Cancer Res* 71: 7683–7693. Available: <http://www.ncbi.nlm.nih.gov/pubmed/22025563>. Accessed 10 May 2014.
50. Kannagi R (2007) Carbohydrate antigen sialyl Lewis a—its pathophysiological significance and induction mechanism in cancer progression. *Chang Gung Med J* 30: 189–209. Available: <http://www.ncbi.nlm.nih.gov/pubmed/17760270>.
51. Neves AA, Stöckmann H, Harmston RR, Pryor HJ, Alam IS, et al. (2011) Imaging sialylated tumor cell glycans in vivo. *FASEB J* 25: 2528–2537. Available: <http://www.ncbi.nlm.nih.gov/pubmed/21493886>. Accessed 10 May 2014.
52. Neves AA, Stöckmann H, Wainman YA, Kuo JC-H, Fawcett S, et al. (2013) Imaging cell surface glycosylation in vivo using “double click” chemistry. *Bioconjug Chem* 24: 934–941. Available: <http://www.pubmedcentral.nih.gov/articlerender.fcgi?artid=3687584&tool=pmcentrez&rendertype=abstract>. Accessed 1 May 2014.
53. Reis C a, Osorio H, Silva L, Gomes C, David L (2010) Alterations in glycosylation as biomarkers for cancer detection. *J Clin Pathol* 63: 322–329. Available: <http://www.ncbi.nlm.nih.gov/pubmed/20354203>. Accessed 17 September 2013.
54. Casaravilla C, Freire T, Malgor R, Medeiros A, Osinaga E, et al. (2003) Mucin-type O-glycosylation in helminth parasites from major taxonomic groups: evidence for widespread distribution of the Tn antigen (GalNAc-Ser/Thr) and identification of UDP-GalNAc: polypeptide N-acetylgalactosaminyltransferase activity. *J Parasitol* 89: 709–714. Available: <http://www.ncbi.nlm.nih.gov/pubmed/14533679>. Accessed 10 May 2014.
55. Gowda DC, Davidson EA (1999) Protein glycosylation in the malaria parasite. *Parasitol Today* 15: 147–152. Available: <http://www.ncbi.nlm.nih.gov/pubmed/10322336>. Accessed 10 May 2014.
56. Barthel SR, Gavino JD, Dimitroff CJ (2007) Targeting selectins and selectin ligands in inflammation and cancer. *Expert Opin Ther Targets* 11: 1473–1491. Available: <http://www.pubmedcentral.nih.gov/articlerender.fcgi?artid=2559865&tool=pmcentrez&rendertype=abstract>. Accessed 10 May 2014.
57. Pan LH, Yamauchi K, Sawai T, Nakadate T, Kojima Y, et al. (2000) Inhibition of binding of E- and P-selectin to sialyl-Lewis X molecule suppresses the inflammatory response in hypersensitivity pneumonitis in mice. *Am J Respir Crit Care Med* 161: 1689–1697. Available: <http://www.ncbi.nlm.nih.gov/pubmed/10806176>. Accessed 10 May 2014.
58. Brunk DK, Goetz DJ, Hammer DA (1996) Sialyl Lewis(x)/E-selectin-mediated rolling in a cell-free system. *Biophys J* 71: 2902–2907. Available: <http://www.pubmedcentral.nih.gov/articlerender.fcgi?artid=1233776&tool=pmcentrez&rendertype=abstract>. Accessed 30 April 2014.
59. Komatsu T, Nagano K, Sugiura S, Hagiwara M, Tanigawa N, et al. (2012) E-selectin mediates *Porphyromonas gingivalis* adherence to human endothelial cells. *Infect Immun* 80: 2570–2576. Available: <http://www.pubmedcentral.nih.gov/articlerender.fcgi?artid=3416463&tool=pmcentrez&rendertype=abstract>. Accessed 29 April 2014.
60. St Hill CA (2011) Interactions between endothelial selectins and cancer cells regulate metastasis. *Front Biosci Landmark Ed* 16: 3233–3251. Available: <http://www.ncbi.nlm.nih.gov/pubmed/21622232>. Accessed 10 May 2014.
61. Young ND, Jex AR, Li B, Liu S, Yang L, et al. (2012) Whole-genome sequence of *Schistosoma haematobium*. *Nat Genet* 44: 221–225. Available: <http://www.ncbi.nlm.nih.gov/pubmed/22246508>. Accessed 29 April 2014.
62. Kawarada Y, Ishikura H, Kishimoto T, Kato H, Yano T, et al. (2000) The role of sialylated Lewis antigens on hematogenous metastases of human pancreas carcinoma cell lines in vivo. *Pathol Res Pract* 196: 259–263. Available: <http://www.ncbi.nlm.nih.gov/pubmed/10782470>. Accessed 10 May 2014.
63. Yoshino TP, Wu X-J, Liu H, Gonzalez LA, Deelder AM, et al. (2012) Glycotope sharing between snail hemolymph and larval schistosomes: larval transformation products alter shared glycan patterns of plasma proteins. *PLoS Negl Trop Dis* 6: e1569. Available: <http://www.pubmedcentral.nih.gov/articlerender.fcgi?artid=3308936&tool=pmcentrez&rendertype=abstract>. Accessed 10 May 2014.
64. Mendes TAO, Lobo FP, Rodrigues TS, Rodrigues-Luiz GF, daRocha WD, et al. (2013) Repeat-enriched proteins are related to host cell invasion and immune evasion in parasitic protozoa. *Mol Biol Evol* 30: 951–963. Available: <http://www.ncbi.nlm.nih.gov/pubmed/23303306>. Accessed 1 May 2014.