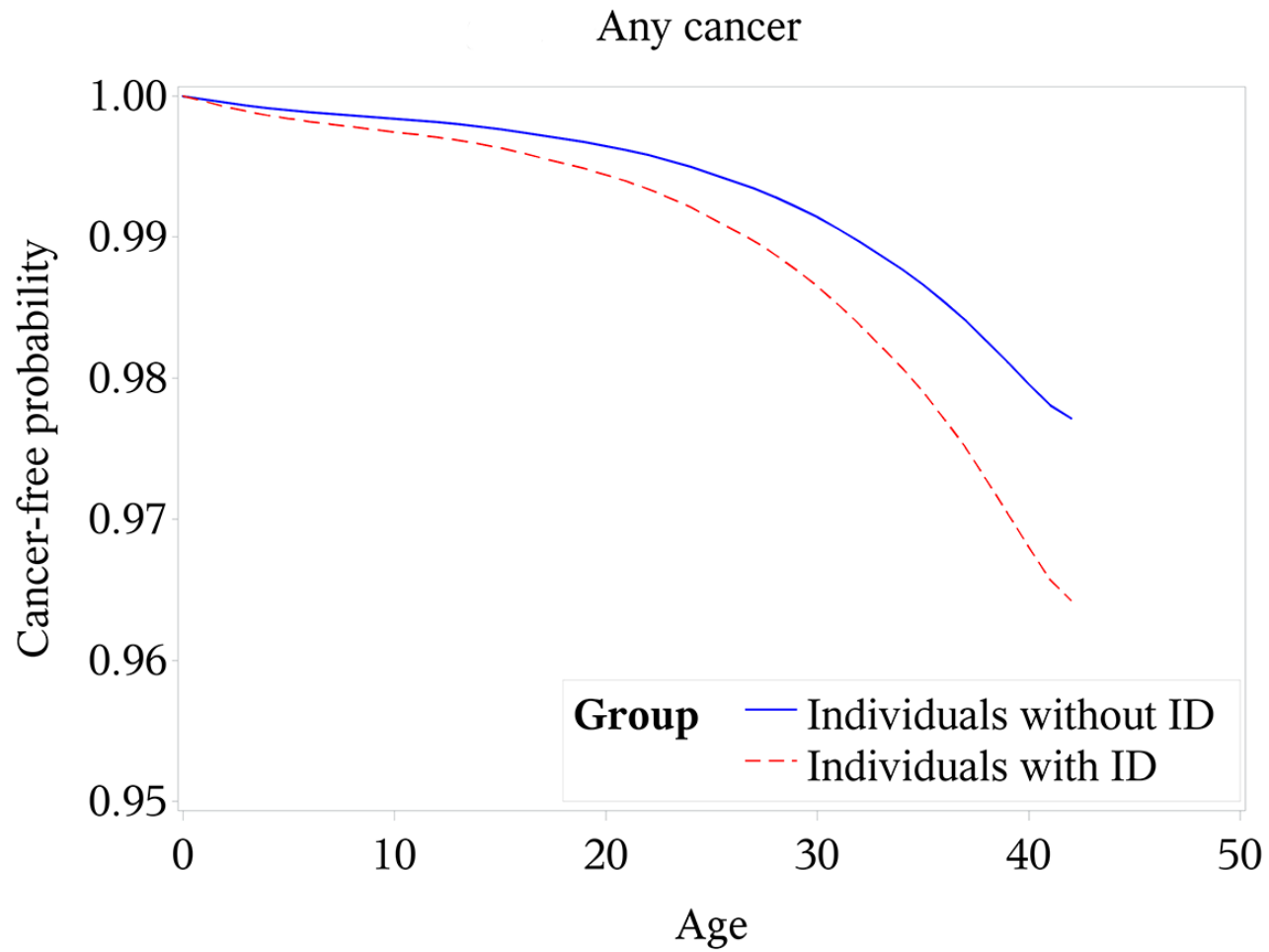
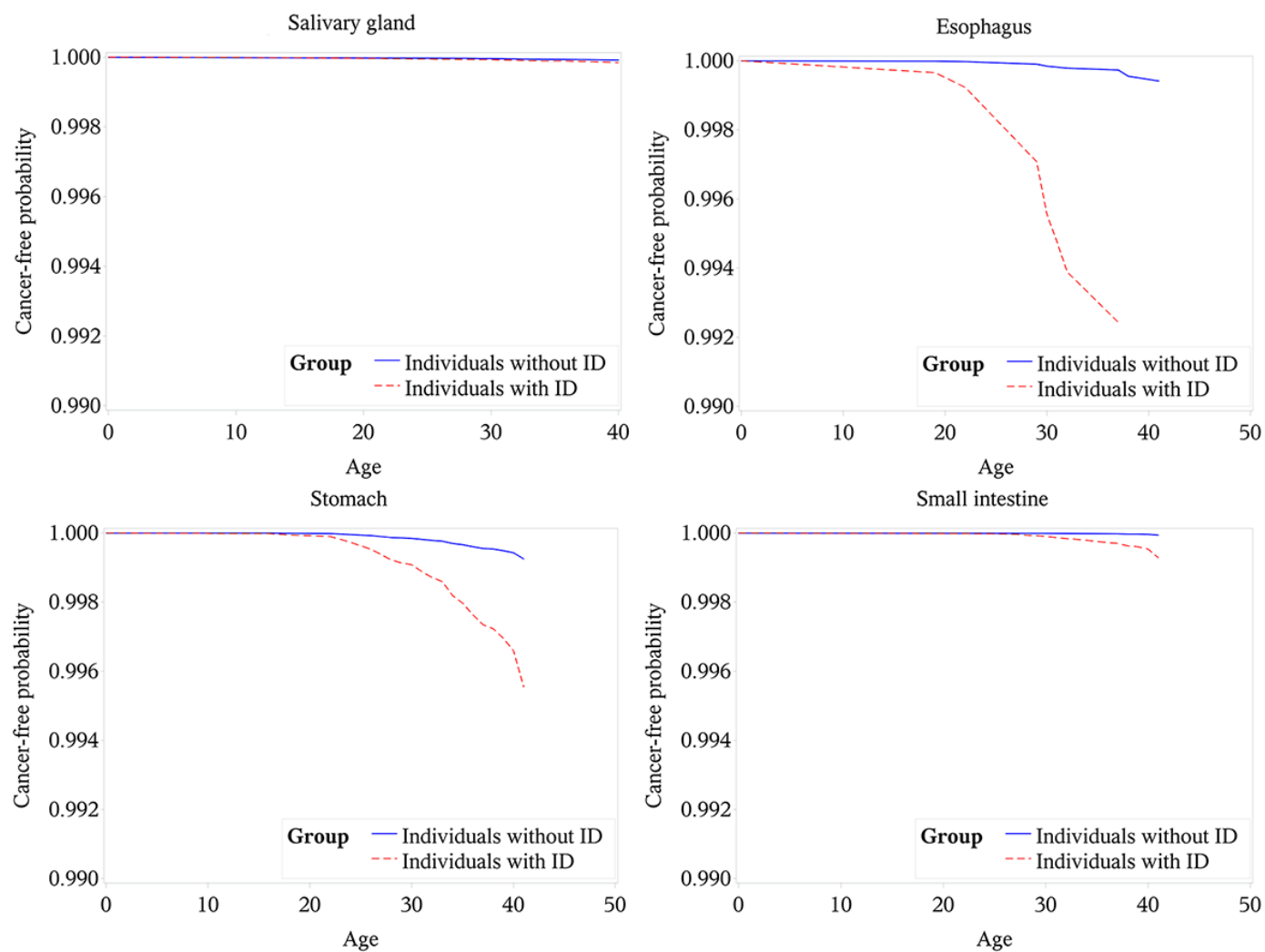


**S3 Fig.** Cancer risk overall (any cancer) and by cancer type among individuals with ID and reference group

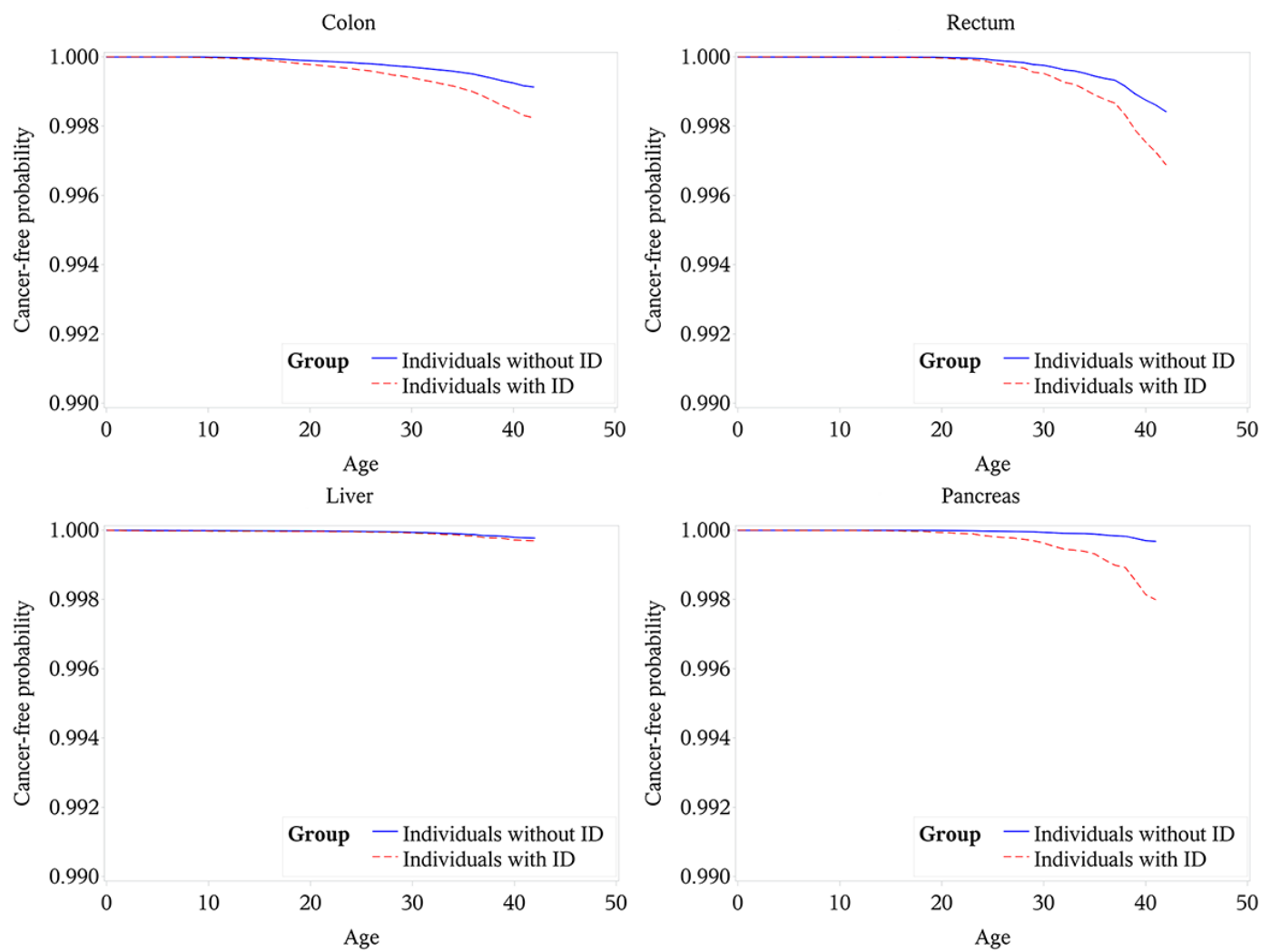
**A. Risk of any cancer.**



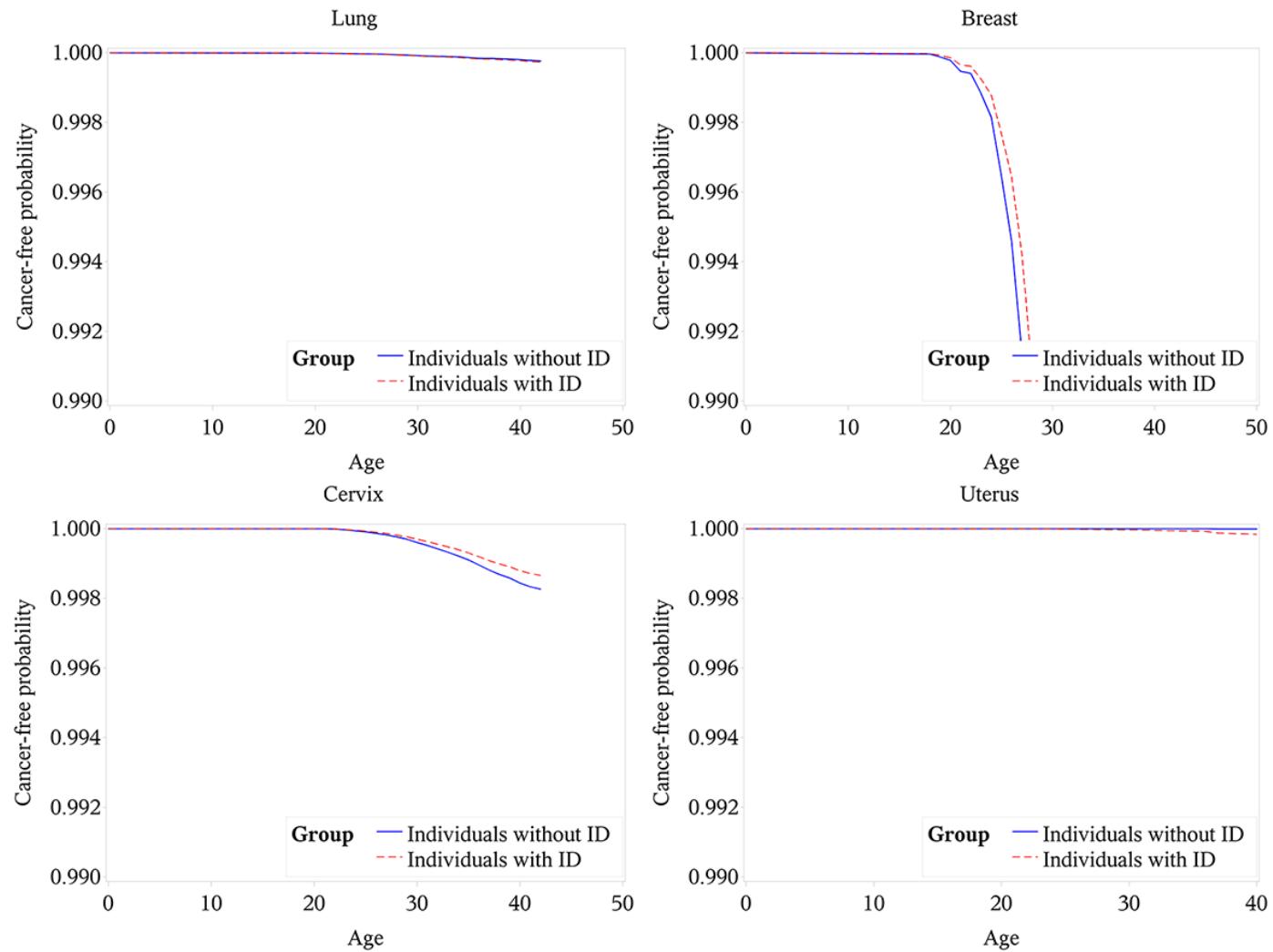
## B. Risk of cancer of salivary gland, esophagus, stomach and small intestine.



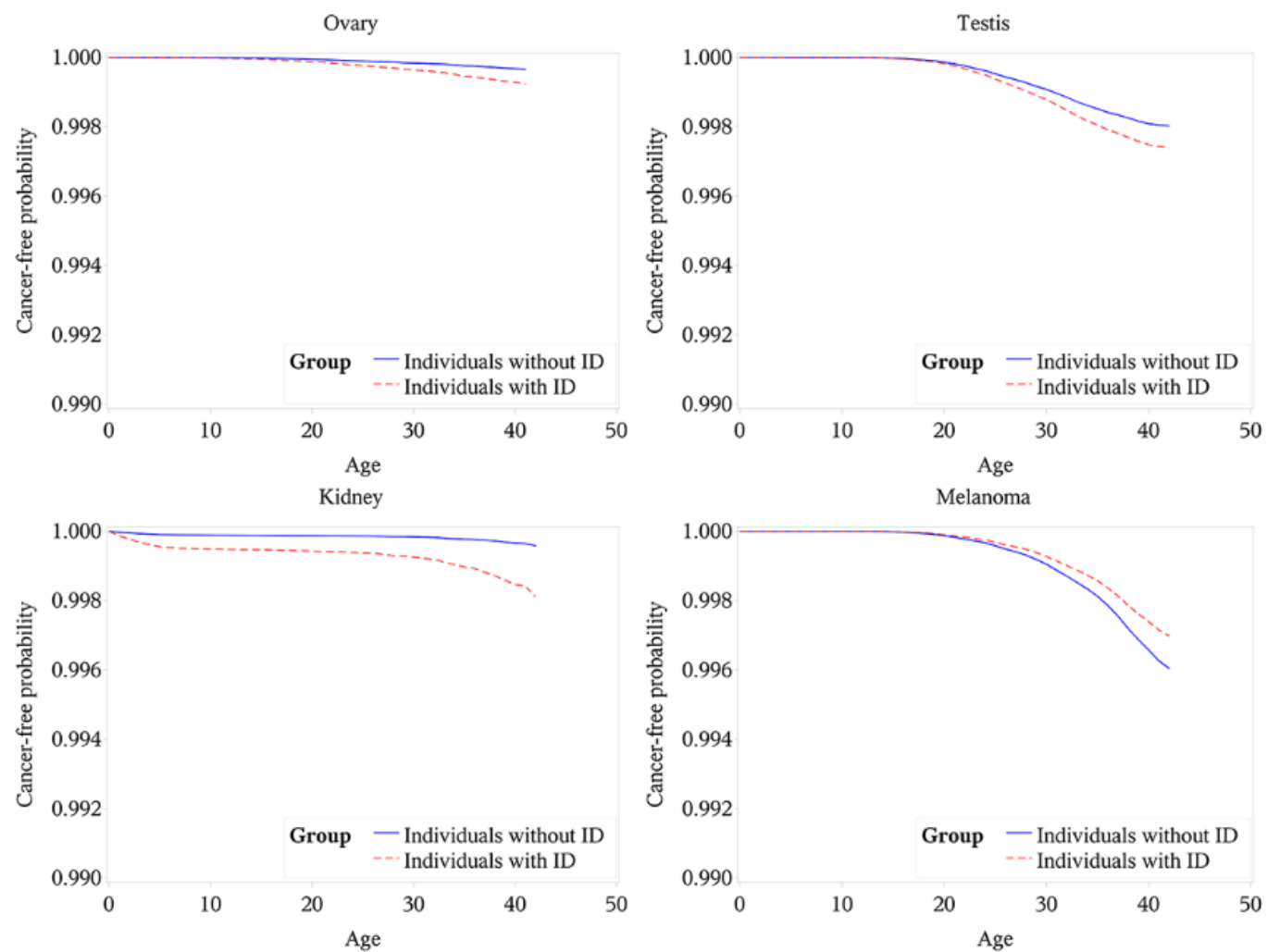
### C. Risk of cancer of colon, rectum, liver and pancreas



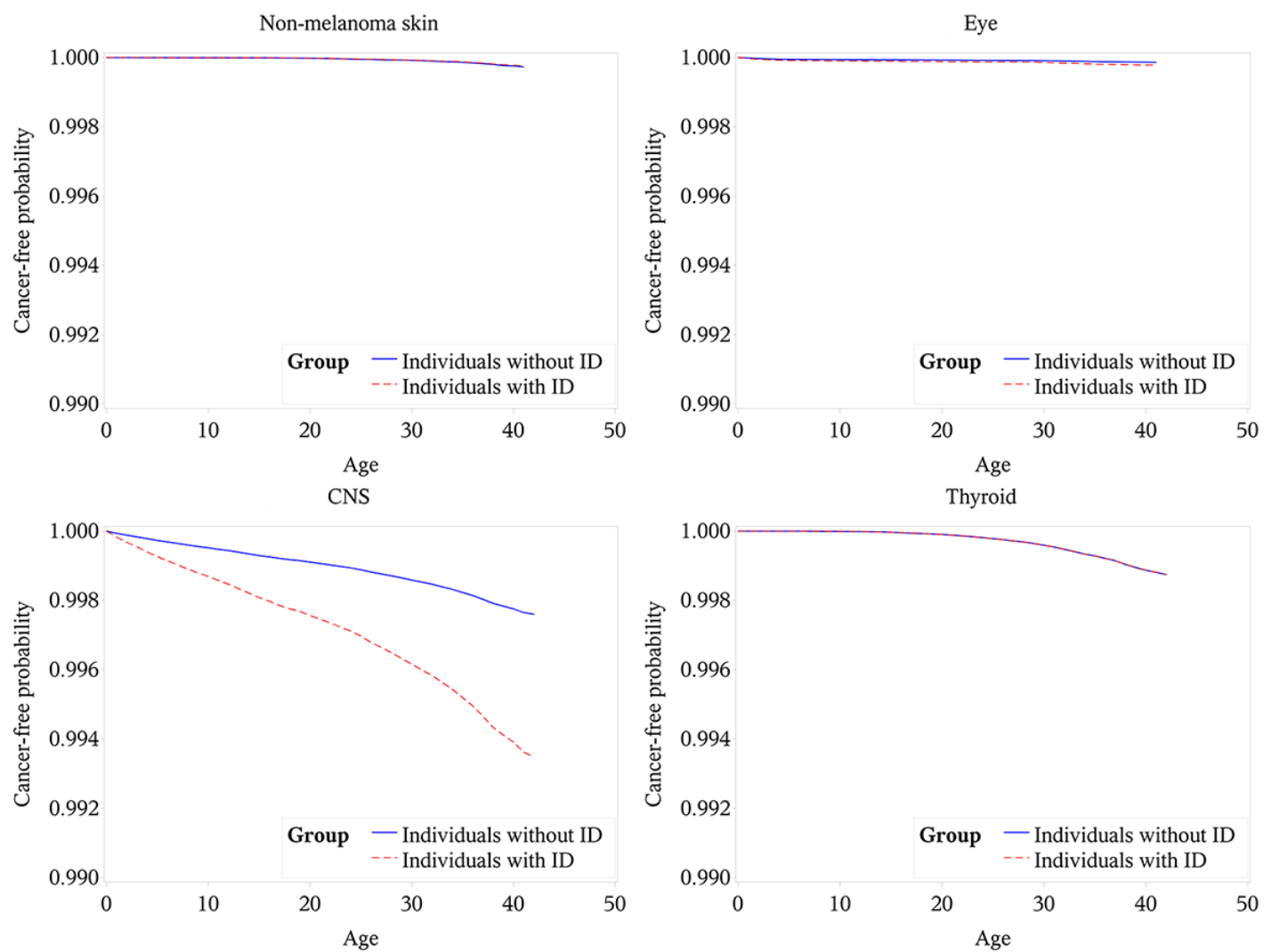
#### D. Risk of cancer of lung, breast, cervix and uterus



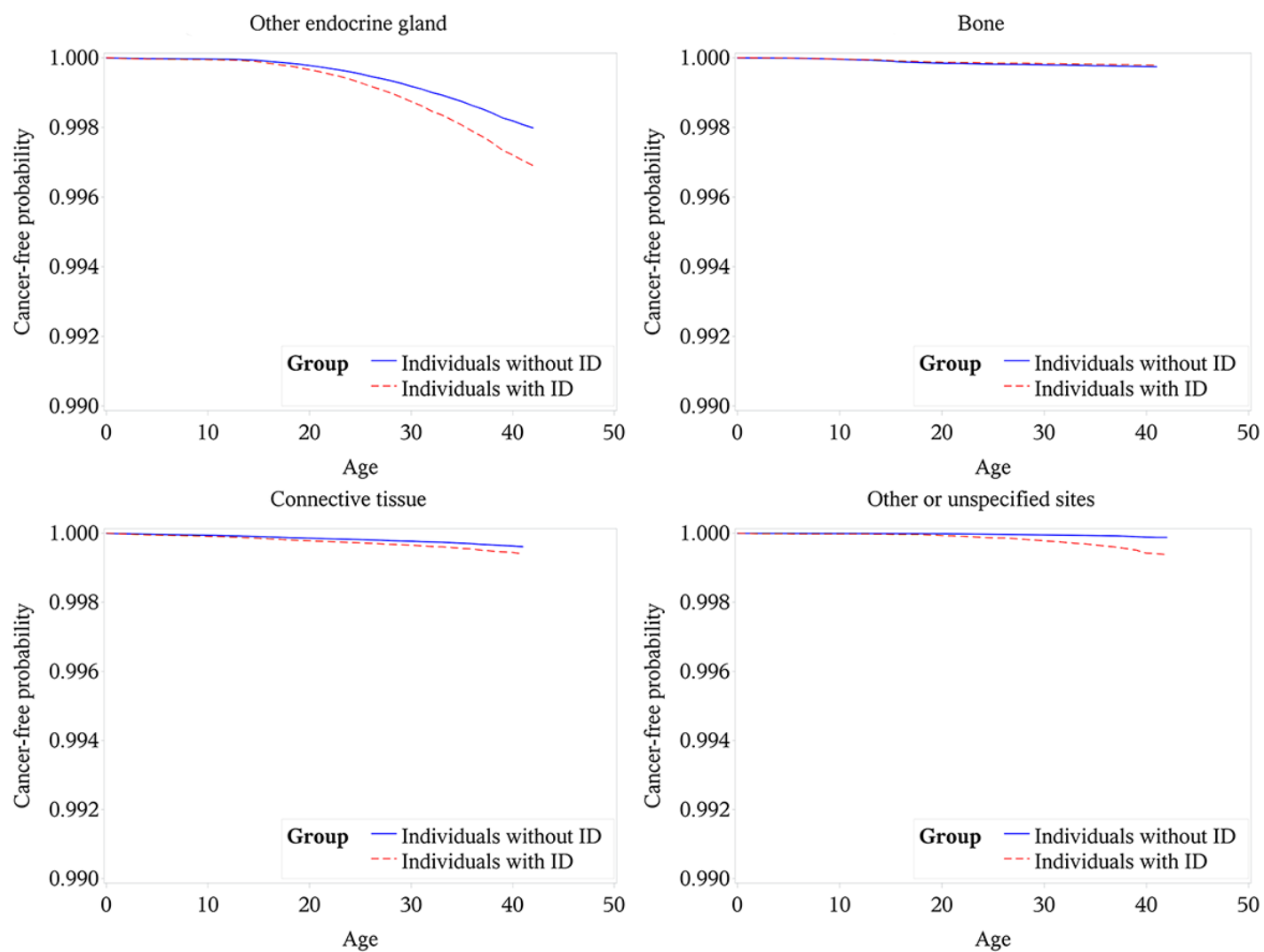
## E. Risk of cancer of ovary, testis, kidney and melanoma



## F. Risk of cancer of non-melanoma skin, eye, CNS, and thyroid



## G. Risk of cancer of other endocrine gland, bone, connective tissue and other or unspecified sites



H. Risk of Hodgkin’s lymphoma, Non-Hodgkin’s lymphoma, ALL and AML

