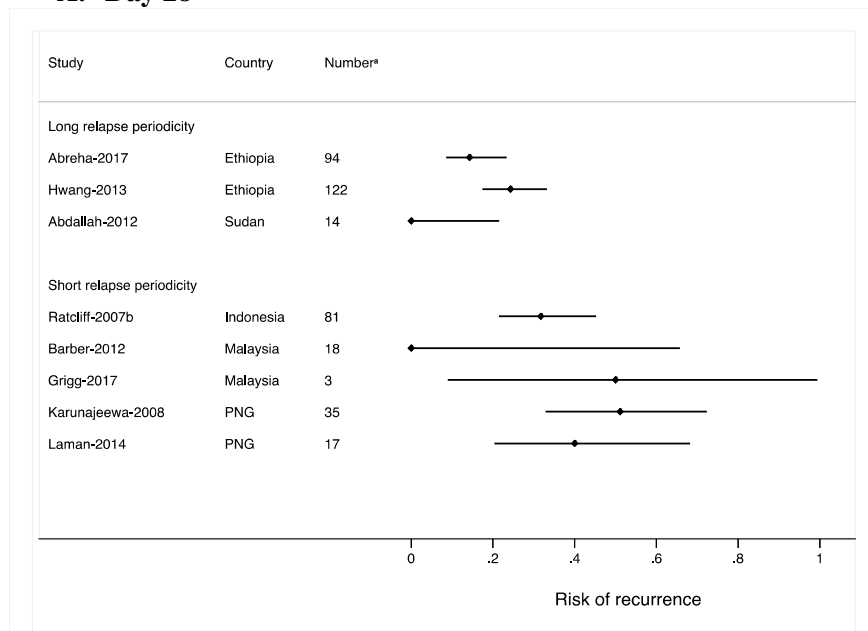
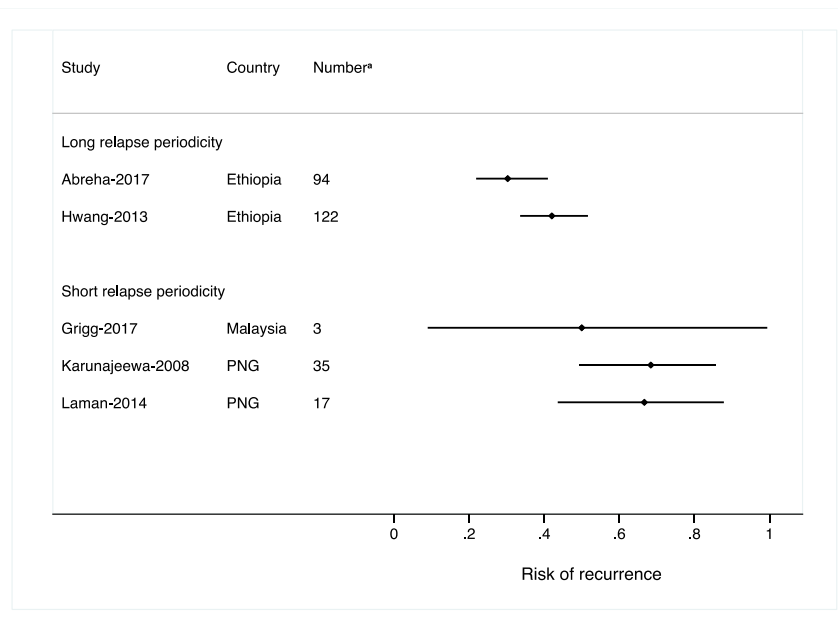


A. Day 28



B. Day 42



S7 Fig. Risk of recurrence by study at days 28 and 42 in patients receiving artemether-lumefantrine alone

^a Number refers to the total number of patients available for analysis per study for individuals treated with artemether-lumefantrine alone

Where a Kaplan-Meier failure estimate for day 28 was not available due to no failures having occurred, confidence intervals were generated using Wilson's procedure for patients followed to day 28. Barber *et al* did not have any failures, or any patients followed until day 42 [28].