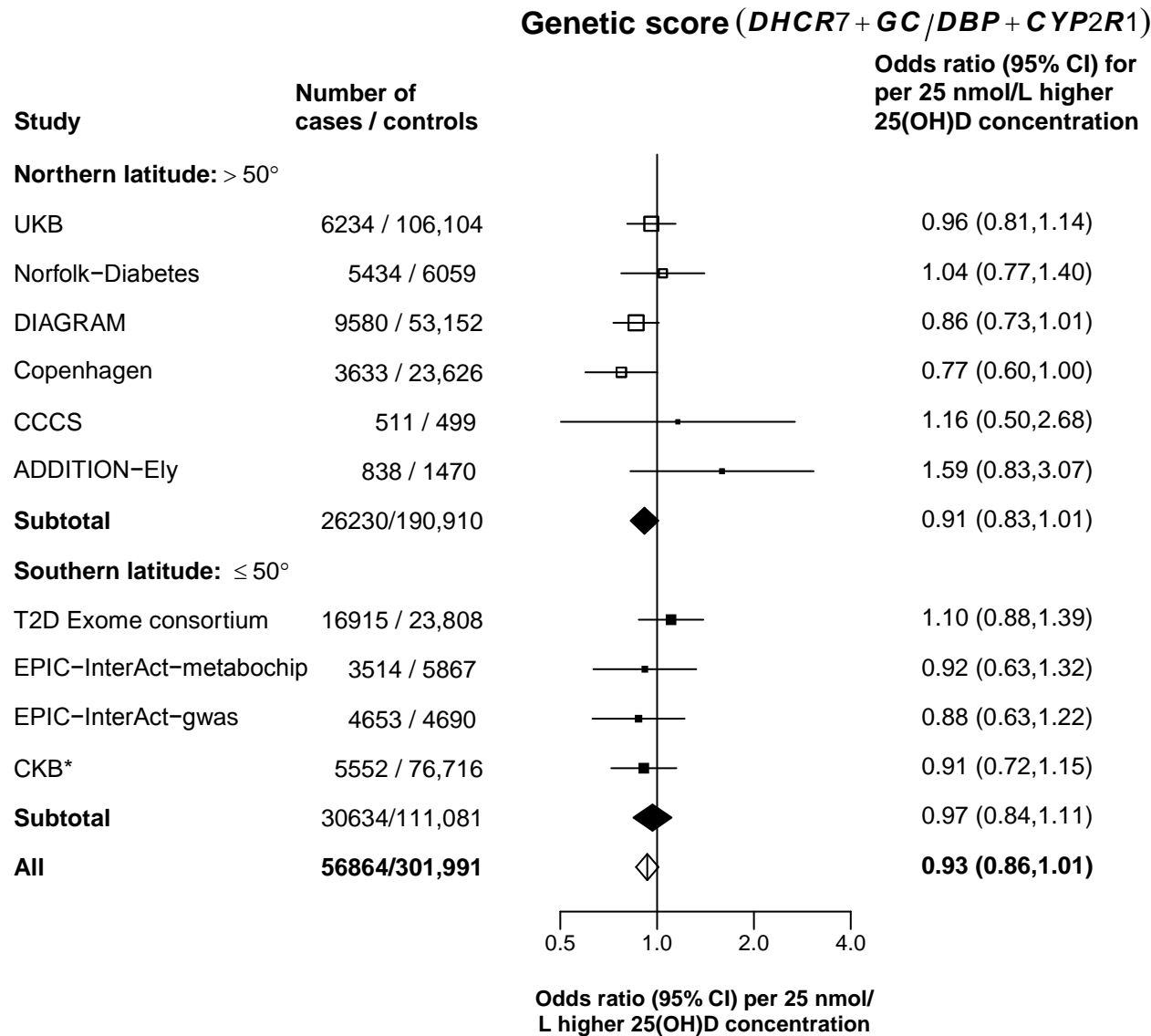


S7 Fig: Association of genetic score using two synthesis SNPs and the lead transport SNP for plasma 25(OH)D concentration with risk of diabetes in a meta-analysis of all studies per 25 nmol/L higher genetically instrumented 25(OH)D concentration



Heterogeneity p-value between latitude groups = 0.51
P-value for overall effect = 0.09

*Both CKB and all other studies are weighted by the effects of each SNP on 25(OH)D concentration.