

CORRECTION

Correction: Direct and indirect impacts of the COVID-19 pandemic on life expectancy and person-years of life lost with and without disability: A systematic analysis for 18 European countries, 2020–2022

Sara Ahmadi-Abhari, Piotr Bandosz, Martin J. Shipley, Joni V. Lindbohm, Abbas Dehghan, Paul Elliott, Mika Kivimaki

There is an error in the caption of [Fig 5](#). The “per 1,000 population” should not have been indicated. Please see the correct caption of [Fig 5](#) here.

[Fig 6](#) was uploaded incorrectly. Please see the correct [Fig 6](#) here.



OPEN ACCESS

Citation: Ahmadi-Abhari S, Bandosz P, Shipley MJ, Lindbohm JV, Dehghan A, Elliott P, et al. (2025) Correction: Direct and indirect impacts of the COVID-19 pandemic on life expectancy and person-years of life lost with and without disability: A systematic analysis for 18 European countries, 2020–2022. PLoS Med 22(9): e1004757. <https://doi.org/10.1371/journal.pmed.1004757>

Published: September 19, 2025

Copyright: © 2025 Ahmadi-Abhari et al. This is an open access article distributed under the terms of the [Creative Commons Attribution License](#), which permits unrestricted use, distribution, and reproduction in any medium, provided the original author and source are credited.

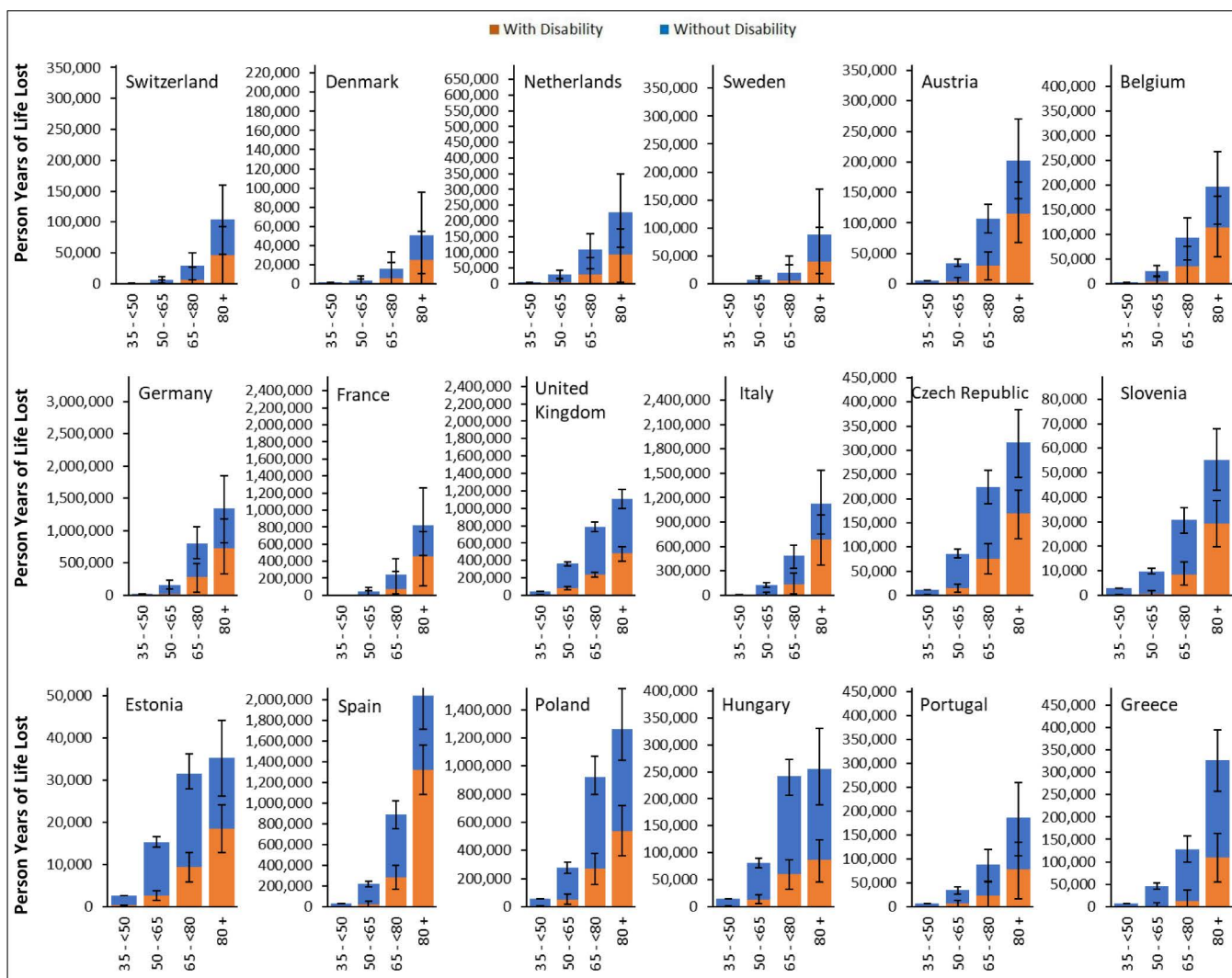


Fig 5. Person-years of life lost between ages 35–100 by age-group and sex, sorted by descending gross domestic product per capita. To enable comparability between countries, the range of the Y-axis is proportional to the total population aged 35+ in each country. Error bars represent 95% Uncertainty Intervals obtained from Monte-Carlo simulation.

<https://doi.org/10.1371/journal.pmed.1004757.g005>

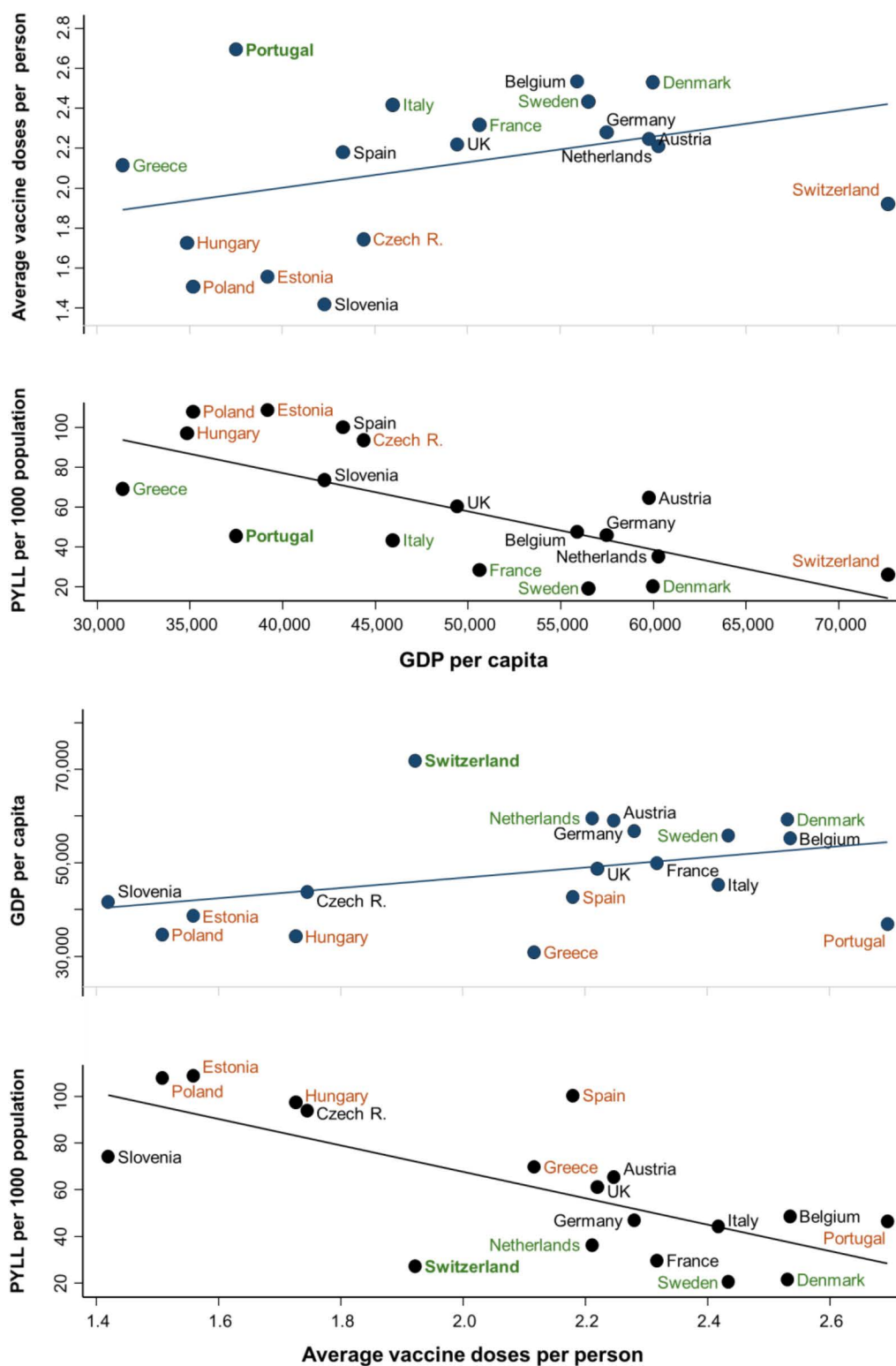


Fig 6. Associations between person-years of life lost per 1,000 population (PYLL) over the years 2020–2022 with Gross Domestic Product (GDP) per capita and COVID-19 vaccination coverage. In the top panel, deviations in countries' PYLL and vaccination coverage from values expected based on GDP per capita tend to mirror one another. In the bottom panel, deviations in PYLL and GDP per capita from values expected

based on vaccination coverage show a similar mirroring. Countries that follow this pattern are labelled in **green** (lower-than-expected PYLL paired with higher-than-expected vaccination coverage [top] or GDP per capita [bottom]), or **orange** (higher-than-expected PYLL paired with lower-than-expected vaccination coverage [top] or GDP per capita [bottom]). Countries not following this pattern are labelled in **black**.

<https://doi.org/10.1371/journal.pmed.1004757.g006>

Reference

1. Ahmadi-Abhari S, Bandosz P, Shipley MJ, Lindbohm JV, Dehghan A, Elliott P, et al. Direct and indirect impacts of the COVID-19 pandemic on life expectancy and person-years of life lost with and without disability: A systematic analysis for 18 European countries, 2020-2022. *PLoS Med.* 2025;22(3):e1004541. <https://doi.org/10.1371/journal.pmed.1004541> PMID: [40067869](https://pubmed.ncbi.nlm.nih.gov/40067869/)