

RESEARCH ARTICLE

The Fear Reduction Exercised Early (FREE) approach to management of low back pain in general practice: A pragmatic cluster-randomised controlled trial

Ben Darlow^{1*}, James Stanley², Sarah Dean³, J. Haxby Abbott⁴, Sue Garrett¹, Ross Wilson⁴, Fiona Mathieson⁵, Anthony Dowell¹

1 Department of Primary Health Care and General Practice, University of Otago, Wellington, New Zealand, **2** Biostatistical Group, University of Otago, Wellington, New Zealand, **3** University of Exeter Medical School, College of Medicine and Health, University of Exeter, Exeter, United Kingdom, **4** Department of Surgical Sciences, University of Otago, Dunedin, New Zealand, **5** Department of Psychological Medicine, University of Otago, Wellington, New Zealand

* ben.darlow@otago.ac.nz



 OPEN ACCESS

Citation: Darlow B, Stanley J, Dean S, Abbott JH, Garrett S, Wilson R, et al. (2019) The Fear Reduction Exercised Early (FREE) approach to management of low back pain in general practice: A pragmatic cluster-randomised controlled trial. *PLoS Med* 16(9): e1002897. <https://doi.org/10.1371/journal.pmed.1002897>

Academic Editor: Adrian Christopher Traeger, The University of Sydney, AUSTRALIA

Received: March 25, 2019

Accepted: August 5, 2019

Published: September 9, 2019

Copyright: © 2019 Darlow et al. This is an open access article distributed under the terms of the [Creative Commons Attribution License](https://creativecommons.org/licenses/by/4.0/), which permits unrestricted use, distribution, and reproduction in any medium, provided the original author and source are credited.

Data Availability Statement: Data are deposited in the Dryad repository: <https://datadryad.org/review?doi=doi:10.5061/dryad.4t375b2>

Funding: This study was funded by the Accident Compensation Corporation (<https://www.acc.co.nz/>). BD,JS,SD,JHA,FM,TD were named investigators on the grant application. The funder had no role in study design, data collection, data analysis, data interpretation, preparation of the manuscript, or decision to submit. The corresponding author had

Abstract

Background

Effective and cost-effective primary care treatments for low back pain (LBP) are required to reduce the burden of the world's most disabling condition. This study aimed to compare the clinical effectiveness and cost-effectiveness of the Fear Reduction Exercised Early (FREE) approach to LBP (intervention) with usual general practitioner (GP) care (control).

Methods and findings

This pragmatic, cluster-randomised controlled trial with process evaluation and parallel economic evaluation was conducted in the Hutt Valley, New Zealand. Eight general practices were randomly assigned (stratified by practice size) with a 1:1 ratio to intervention (4 practices; 34 GPs) or control group (4 practices; 29 GPs). Adults presenting to these GPs with LBP as their primary complaint were recruited. GPs in the intervention practices were trained in the FREE approach, and patients presenting to these practices received care based on the FREE approach. The FREE approach restructures LBP consultations to prioritise early identification and management of barriers to recovery. GPs in control practices did not receive specific training for this study, and patients presenting to these practices received usual care. Between 23 September 2016 and 31 July 2017, 140 eligible patients presented to intervention practices (126 enrolled) and 110 eligible patients presented to control practices (100 enrolled). Patient mean age was 46.1 years (SD 14.4), and 46% were female. The duration of LBP was less than 6 weeks in 88% of patients. Primary outcome was change from baseline in patient participant Roland Morris Disability Questionnaire (RMDQ) score at 6 months. Secondary patient outcomes included pain, satisfaction, and psychosocial indices. GP outcomes included attitudes, knowledge, confidence, and GP LBP management behaviour. There was active and passive surveillance of potential harms.

full access to all the data in the study and had final responsibility for the decision to submit for publication.

Competing interests: I have read the journal's policy and the authors of this manuscript have the following competing interests: BD, FM, TD were part of the team that originally developed the FREE approach (intervention studied in this trial). BD has received personal fees outside of the submitted work from Tu Ora Compass Health and the Royal New Zealand College of General Practitioners for general practitioner musculoskeletal training. SD has received personal fees outside of the submitted work from the Behaviour Change Taxonomy project; the taxonomy was used to map the intervention behaviour change strategies. All other authors have declared that no competing interests exist.

Abbreviations: ACC, Accident Compensation Corporation; Back-PAQ, Back Pain Attitudes Questionnaire; CONSORT, Consolidated Standards Of Reporting Trials; DRS, Disability Rating Scale; EQ-5D, EuroQoL-5D; FREE, Fear Reduction Exercised Early; FTE, full-time equivalent; GDP, gross domestic product; GP, general practitioner; HC-PAIRS, Health Care Providers Pain and Impairment Relationship Scale; ICC, intraclass correlation coefficient; INB, Incremental Net Benefit; LBP, low back pain; MAR, missing at random; MCID, minimal clinically important difference; NPRS, Numeric Pain Rating Scale; NZDep, New Zealand index of socioeconomic deprivation; OCC-Q-LBP, Otago Costs and Consequences Questionnaire for Low Back Pain; OR, odds ratio; PSEQ-2, Two item Pain Self-Efficacy Questionnaire; QALY, Quality-Adjusted Life Year; REDCap, Research Electronic Data Capture; RMDQ, Roland Morris Disability Questionnaire; STarT, Subgroups for Targeted Treatment; MATCH, Matching Appropriate Treatments to Consumer Healthcare needs; WTP, willingness to pay.

Patients and outcome assessors were blind to group assignment. Analysis followed intention-to-treat principles. A total of 122 (97%) patients from 32 GPs in the intervention group and 99 (99%) patients from 25 GPs in the control group were included in the primary outcome analysis. At 6 months, the groups did not significantly differ on the primary outcome (adjusted mean RMDQ score difference 0.57, 95% CI -0.64 to 1.78; $p = 0.354$) or secondary patient outcomes. The RMDQ difference met the predefined criterion to indicate noninferiority. One control group participant experienced an activity-related gluteal tear, with no other adverse events recorded. Intervention group GPs had improvements in attitudes, knowledge, and confidence compared with control group GPs. Intervention group GP LBP management behaviour became more guideline concordant than the control group. In cost-effectiveness, the intervention dominated control with lower costs and higher Quality-Adjusted Life Year (QALY) gains. Limitations of this study were that although adequately powered for primary outcome assessment, the study was not powered for evaluating some employment, healthcare use, and economic outcomes. It was also not possible for research nurses (responsible for patient recruitment) to be masked on group allocation for practices.

Conclusions

Findings from this study suggest that the FREE approach improves GP concordance with LBP guideline recommendations but does not improve patient recovery outcomes compared with usual care. The FREE approach may reduce unnecessary healthcare use and produce economic benefits. Work participation or health resource use should be considered for primary outcome assessment in future trials of undifferentiated LBP.

Trial registration

[ACTRN12616000888460](https://www.anzctr.org.au/Trial/Registration/Trial.jsp?ACTRN12616000888460)

Author summary

Why was this study done?

- Low back pain (LBP) is the world's leading cause of disability and a common reason to consult a general practitioner (GP).
- There is broad international consensus on the best ways to manage LBP, but many of these recommendations have not been integrated into standard primary care clinical practice.
- This gap between evidence and practice results in worse recovery outcomes and overdiagnosis, overtreatment, and exposure to unnecessary risk of harm for people with LBP.

What did the researchers do and find?

- We developed the Fear Reduction Exercised Early (FREE) approach to LBP for use in routine GP clinical consultations to bridge the evidence-practice gap.

- We randomly allocated groups of GPs to either continue with usual clinical care or receive training in the FREE approach in conjunction with support to integrate the approach into their clinical practice. We measured outcomes for GPs and patients with LBP who consulted these GPs.
- We found that GPs who received the FREE training had changes in their attitudes, knowledge, and confidence, and their clinical practice became more aligned with best-practice guidelines.
- We found that recovery (disability and pain) was similar for patients who consulted intervention or control group GPs, but those who consulted a GP trained in the FREE approach used less additional healthcare and had lower costs.

What do these findings mean?

- These findings challenge the assumption that improving GP concordance with guidelines for LBP will improve patient recovery outcomes.
- These findings suggest that FREE may be an effective way to improve GP contributions to LBP care and improve efficiency without negatively impacting on patient recovery.
- Extending the intervention to other parts of the system, such as employers and other healthcare providers, may provide an opportunity to optimise the impact of FREE through reinforcing key messages and enabling recommended patient behaviours.
- Future studies should consider using participation measures, such as days off work, or healthcare resource use, as primary outcomes to assess the impact of intervention on the burden of LBP.

Introduction

Low back pain (LBP) is a highly prevalent, complex, and expensive health condition and has been the world's leading cause of disability since 1990 [1,2]. Globally, a substantial gap exists between current evidence on treating back pain and actual practice [3,4]. This gap results in overuse of opioid medication, spinal imaging, interventional procedures (such as guided injections), and surgery [3]. Use of these interventions when not indicated provides poor value to both patients and health systems through overdiagnosis, overtreatment, and exposure to unnecessary risk of harm [3,5].

There is broad international consensus on LBP best-practice recommendations [3]. It is assumed that implementation of these recommendations will improve healthcare outcomes and potentially reduce costs by preventing use of harmful and wasteful management approaches [3,5,6]. However, few studies have examined the impact of general practice implementation of LBP best-practice recommendations, and few of these have demonstrated improvements in patient outcomes or reduction in healthcare costs [7,8].

The Fear Reduction Exercised Early (FREE) approach is a multifaceted primary care intervention developed in New Zealand for general practitioner (GP) use in routine clinical consultation. The FREE approach aligns with LBP guidelines by empowering primary care management of LBP, enabling GPs to provide evidence-based education and advice, encouraging activity and

work participation, integrating a biopsychosocial approach, and discouraging interventions with low beneficial value [2,3]. The FREE approach also adheres to recommended strategies to overcome implementation barriers by including GP education and training, electronic consultation support, and social interaction [9]. Pilot testing of the FREE approach found that GPs considered it to be acceptable and useful [10]. We aimed to determine (i) whether patients with LBP who receive care from GPs trained in the FREE approach have better outcomes than those who receive usual GP care; (ii) whether training GPs in the FREE approach influences their attitudes, knowledge, confidence, and clinical behaviour related to LBP; and (iii) whether training GPs in the FREE approach reduces economic costs associated with LBP.

Methods

The trial was prospectively registered with the Australia New Zealand Clinical Trial Registry (ACTRN12616000888460) and is reported as per the Consolidated Standards Of Reporting Trials (CONSORT) guideline ([S1 Checklist](#)).

Study design

We conducted a pragmatic cluster-randomised superiority trial in 8 general practices, with assessment of outcomes blinded to group allocation. In parallel, we also conducted a process evaluation to assess fidelity of intervention delivery by the GPs and a health economic evaluation. Cluster randomisation of general practices (rather than practitioners) was necessary to reduce risk of contamination associated with 1 GP providing 2 types of care or GPs discussing the intervention with colleagues in their practice.

Participants

General practices with more than 3 full-time equivalent (FTE) GPs were recruited from the Hutt Valley region of New Zealand. All GPs working at these practices were invited to participate, with no further exclusion criteria.

All patients with LBP presenting to participating practices were screened for eligibility by a research nurse prior to their GP consultation. Patients were eligible if they were over 18 years of age and had LBP of any duration (with or without leg pain) as their main reason for consultation. Patients were excluded if they had received back surgery in the previous 6 months, had been unable to do their normal work for more than 3 of the last 6 months, had back pain due to a non-back-related condition (e.g., hip arthritis) or a serious health condition (e.g., cauda equina syndrome, spinal infection), had a concomitant health condition that meant they were unsuitable for trial participation (e.g., pregnancy or major psychological disturbance), or were unable to read or write in English.

Eligibility criteria changed early during the data collection phase (updated in the trial registration and presented in the published protocol) [11]. The protocol originally stated that the patient group would be limited to those who had experienced LBP for less than 6 weeks, were between 18 and 65 years, and had not seen a health professional about back pain in the last 3 months. These criteria were removed as these unnecessarily restricted patient eligibility and risked reducing the generalisability of findings.

All GP and patient participants gave written informed consent with optional additional consent (required from both GP and patient) to audio-record consultations. The trial was approved by the New Zealand Central Region Health and Disability Ethics Committee (16/CEN/43) and conducted in accordance with the published protocol [11].

Randomisation and masking

General practices and GPs working in those practices were recruited prior to practice allocation to group. General practices were randomly assigned with a 1:1 allocation to either the intervention or control arm (i.e., all GPs in a practice were randomised to the same arm), using a computer-generated randomisation schedule stratified by the number of FTE GPs within the practice (≤ 8 versus > 8 FTE). An independent statistician at a central administration site conducted the randomisation to ensure allocation concealment. Practice allocation was initially communicated only to the principal investigator so that intervention training and data collection dates could be arranged with practices. Practices and GPs were necessarily unblinded post randomisation to facilitate planning and delivery of intervention workshops and related data collection.

Patient participants were recruited post randomisation. All GP and patient data collection occurred post randomisation. To minimise the time between completing baseline measures and starting patient recruitment, baseline measures for GPs were completed by intervention arm GPs immediately prior to training delivery and by control arm GPs at 4 weeks prior to patient recruitment. GPs were aware of group allocation (but not intervention content) when they completed their baseline measures. Recruited patients were unaware of the trial's existence and goals prior to presenting at their practice and were unaware that 2 different treatment approaches were being compared, meaning that they were masked to cluster allocation. Intervention and control consultations contained similar elements (history, examination, management) from a patient perspective. Research nurses at all practices used identical scripts, information sheets, and screening criteria to minimise potential recruitment bias. Data were cleaned and analysed by the trial statistician who was blinded to group allocation.

Procedures

General practices in the control arm continued to provide usual care and did not receive specific training for this study (see [S2 Checklist](#)). GPs in the intervention arm were trained in the FREE approach to LBP (described previously [[11](#)]; see [S3 Checklist](#)). The FREE approach is delivered within standard GP consultations. It restructures and/or enhances the initial GP consultation for each LBP presentation and provides a framework and resources for approaching this and any subsequent consultations. FREE aims to optimise GP and patient behaviours and shift GP focus to addressing factors that can negatively influence outcomes. GPs were trained in the FREE approach through an initial 4-hour facilitated workshop, followed by a 4-week experiential learning period, and then a 1-hour refresher session. Intervention aims, activities, and resources are summarised in [Fig 1](#). GPs were paid NZ\$800 (GB£ 412.59) for time associated with training and NZ\$20 (GB£ 10.32) for each of up to 3 patients with whom they used the FREE approach during the experiential learning period. Patient recruitment commenced after the experiential learning period in intervention practices had ended and at an equivalent interval of 4 weeks after completion of GP baseline measures in control practices. GPs in the intervention arm were asked to use the FREE approach to inform their consultations with patients who had LBP, although there was no compulsion or performance feedback, reflecting the pragmatic nature of the trial.

We collected GP data at baseline, 4 weeks (following the refresher session for intervention arm participants), and 4 months (timed to coincide with the anticipated end of patient recruitment). Patient data were collected at baseline (pre- and postconsultation for LBP), 2 weeks, 6 weeks, 3 months, and 6 months. Data were collected through surveys (electronic or postal), audio recording of consultations, and research nurse audit of clinical notes. Nonresponders were followed-up by telephone and text message.

<p>GP behaviour change goals</p> <ul style="list-style-type: none"> • Increased confidence to manage low back pain • Reduced anxiety related to pathology screening • Increased understanding of the impact of psychosocial factors and improved ability to explore and manage these • Increased confidence that movement is safe and improved ability to communicate this to patients <p>Patient behaviour change goals</p> <ul style="list-style-type: none"> • Reduced threat associated with low back pain • Decreased fear of movement • Decreased perceived need to protect the back • Improved outcome expectations • Increased activity and work participation <p>GP training activities</p> <ul style="list-style-type: none"> • Pre-workshop reading • Four-hour interactive training workshop including evidence update, facilitated discussion, role plays, and video presentation of excerpts from patient consultations • Four-weeks' experiential learning with active reflection related to low back pain consultations • One-hour refresher session with facilitated discussion <p>Resources</p> <ul style="list-style-type: none"> • GP training manual • Electronic medical record tool • GP and patient website • Patient information booklet
--

Fig 1. Overview of the FREE approach to LBP. FREE, Fear Reduction Exercised Early; GP, general practitioner; LBP, low back pain.

<https://doi.org/10.1371/journal.pmed.1002897.g001>

Outcomes

The primary patient-level outcome was disability at 6 months, measured with the Roland Morris Disability Questionnaire (RMDQ; scale 0–24; higher scores indicate greater disability) [12]. Secondary patient outcomes were the Numeric Pain Rating Scale (NPRS), Numeric Disability Rating Scale (DRS), satisfaction, and health-related quality of life (EuroQoL-5D [EQ-5D]) [13–15]. These patient-reported outcomes were collected at all patient follow-up points. Psychosocial indices (fear avoidance, pain self-efficacy, catastrophisation, anxiety, expectation) were collected at baseline, 2 weeks, and 6 weeks (the normal recovery period for most LBP) to examine mechanisms by which FREE might impact on patient outcomes (S1 Appendix p 13). Health economic data and some secondary patient outcomes (number of days off work/on restricted duties and quantities of medications taken) were self-reported by patients through the Otago Costs and Consequences Questionnaire for Low Back Pain (OCC-Q-LBP) [16] at 2 weeks, 3 months, and 6 months.

There was active and passive surveillance of potential harms (S1 Appendix p 15). Patients and GPs reported all unexpected or serious health events on a continuous basis during the study and through each follow-up survey. Each report was initially investigated by blinded

members of the research team contacting patients and GPs to explore severity and potential links to back pain or study involvement. Each Adverse Event Reporting Form was reviewed by an independent academic GP who was a member of the data monitoring committee and approved by the entire data monitoring committee.

GP self-reported outcomes were attitudes about LBP and impairment (Health Care Providers Pain and Impairment Relationship Scale [HC-PAIRS] [17]), GP confidence to manage LBP [18], back pain knowledge (Back Pain Attitudes Questionnaire [Back-PAQ] [19]), and recommendations about activity, work, and rest as reported by GPs for a LBP case vignette [20]. Observed GP behaviour outcomes were consultation content (coded by research nurses from electronic consultation notes using a structured template) and patient report of GP recommendations (collected from the patients in their postconsultation data collection questionnaire).

Treatment fidelity was analysed by a researcher blinded to group allocation (S1 Appendix p 24). One audio recording was randomly selected for each GP who had consented to audio recording and treated at least 1 patient participant who had also consented to recording. Recordings were analysed using a structured checklist containing multiple consultation behaviour items. Consultations that included at least 4 out of 5 integral elements of FREE were defined a priori as FREE concordant.

Study data were collected and managed using Research Electronic Data Capture (REDCap) tools hosted at the University of Otago [21].

Statistical analysis

The study was designed [11] with 80% power (two-tailed α of 0.05) to detect a between-group difference at 6 months of 2.5 RMDQ points (minimal clinically important difference) [22] assuming SD = 6.0 [23]. This gave $n = 91$ participants per arm under an individually randomised trial; clustering by GPs inflated this to $n = 110$ participants from 22 GPs per arm (total $n = 220$ patients and 44 GPs; intraclass correlation coefficient (ICC) at a conservative 0.05, assuming 5 completing patients per GP). Assuming 80% participant retention gave a recruitment target of 275 patients; assuming 25% of GPs would not recruit any participants gave a target of 30 GPs recruited per arm ($n = 60$ total).

We conducted an intention-to-treat analysis in line with the statistical analysis plan included in the published protocol [11]. All patients were analysed in the group to which their participating GP was allocated. Clustering of responses for GP outcomes was handled by including a random effect for GP practice in analytical models (random intercept + slope for GP practice) and for patient outcomes by specifying random effects for the GP (random intercept + slope for the GP, whereas randomisation was at the practice level, clustering effects on outcome values were expected to be mostly driven by interpractitioner variability). The stratified randomisation was handled by including the practice size stratum identifier in analytical models (≤ 8 FTE GPs, > 8 FTE GPs). Data were included for each follow-up instance (for patient outcomes: 2 weeks, 6 weeks, 3 months, and 6 months; not all outcomes were measured at all time points).

Continuous outcomes (e.g., RMDQ) were analysed using linear mixed models. Categorical outcomes (such as satisfaction levels) were compared using generalised linear mixed models (with ordered outcome variables treated as ordinal outcomes, using cumulative link mixed models). For patient outcomes, these models adjusted for baseline level of the outcome being measured (e.g., baseline RMDQ included as a covariate when looking at RMDQ during follow-up) along with important baseline covariates (age, gender, socioeconomic status, current back pain duration and nature [constant or episodic], receipt of recent or ongoing non-GP

healthcare for back pain, previous history of back pain, baseline disability, and baseline psychological factors [pain self-efficacy and recovery expectations]) [24]. Differences in outcomes by study arm were modelled over time by including follow-up time as a model term, and using interaction terms for time crossed with intervention arm to assess differences in intervention effects at specific follow-up time points. Analysis of patient outcomes also adjusted for GP-level baseline HC-PAIRS scores as a measure of baseline treatment competence.

The published protocol specified that the intervention could be considered noninferior to current management if the lower bound of the 95% CI for the RMDQ mean difference sat above -2.5 points (the minimal clinically important difference [MCID] [22]) [11,25].

The protocol specified that missing data would be handled through use of linear mixed models, which assume that incomplete postbaseline outcome measures are missing at random (MAR) conditional on group and adjustment variables and any completed postbaseline measures [26]. However, a total of 14 participants did not have time to complete all psychosocial items prior to GP consultation. In order to include these participants, their baseline scores on these covariates were imputed using mean imputation to allow models to be adjusted for all planned covariates [27]. Because the original protocol did not specify any particular outcome for missing baseline covariates, sensitivity analyses (S1 Appendix p 7) report on outcomes when (a) these participants with missing baseline data were excluded from analysis and (b) those adjustment items with missing data were excluded from the analytical model. All patient and GP analyses were conducted using R version 3.4.1 (R Institute, Vienna, Austria) with mixed models using the nlme package for continuous outcomes and the ordinal package for ordered categorical outcomes. The ICC for clustering on the primary outcome (RMDQ difference at 6 months) was estimated in a simplified linear mixed model with no adjustment for confounders (see S1 Appendix p 4 for methods and ICCs for other outcomes).

Cost-utility analysis estimated mean incremental cost per quality-adjusted life year (QALY) and monetary incremental net benefit (INB) gained from healthcare system and societal perspectives and from the Accident Compensation Corporation (ACC; universal no fault insurance cover for all personal injury in New Zealand) perspective, at willingness-to-pay (WTP) thresholds of 1, 2, and $3\times$ gross domestic product (GDP) per capita (2017 NZ\$). Reference costs were assigned for (i) all healthcare items, to allow direct comparison and decrease patient recall requirements; (ii) paid work (based on gender- and age-specific mean income); and (iii) unpaid and/or voluntary work (based on the minimum wage).

Multiple imputation was used to address missing data in the cost and health utility outcome measures. Patterns of missing data and the correlations between variables were examined to determine appropriate imputation models for each variable [28]. Imputations were created using predictive mean matching (continuous variables) and logistic regression models (dichotomous variables). As cost data are typically highly skewed, a large number of imputed datasets ($m = 50$) were created to ensure cost estimates would not be driven solely by a small number of large imputed values in 1 treatment arm. All multiple imputation analyses were conducted using mice (version 2.46.0) in R version 3.5.0.

Comparison of days off work and days on restricted duties was conducted using the multiply-imputed versions of these 2 variables because these measures were accumulated over the entire follow-up period (and hence mixed models could not account for missing data because there were no interim data). Adjusted linear mixed models (allowing for clustering and adjusted for standard factors as above) were used to analyse these 2 outcomes for each of the 50 imputed data sets. The resulting estimates were recombined following the standard rules for pooling results across imputed data sets [29].

An independent data monitoring committee oversaw conduct of the trial. Data are deposited in the Dryad repository (<https://datadryad.org/review?doi=doi:10.5061/dryad.4t375b2>) [30].

Results

Fig 2 shows the trial profile. Between 6 July and 8 August 2016, 57 GP participants were enrolled and subsequently randomised in practice clusters. Full data collection dates are in the S1 Appendix (p 2). An additional 7 GPs (5 intervention, 2 control) were recruited after joining practices post randomisation (but prior to their practice’s study participation), and 1 GP who was on parental leave at the time of her practice’s study participation withdrew prior to recruiting any participants. One intervention group GP withdrew post-training (baseline GP data only), but full data were collected for all other GP participants. GP characteristics were reasonably balanced between groups (Table 1).

Between 23 September 2016 and 31 July 2017, 140 eligible patient participants presented to intervention practices (126 enrolled) and 110 eligible patient participants presented to control

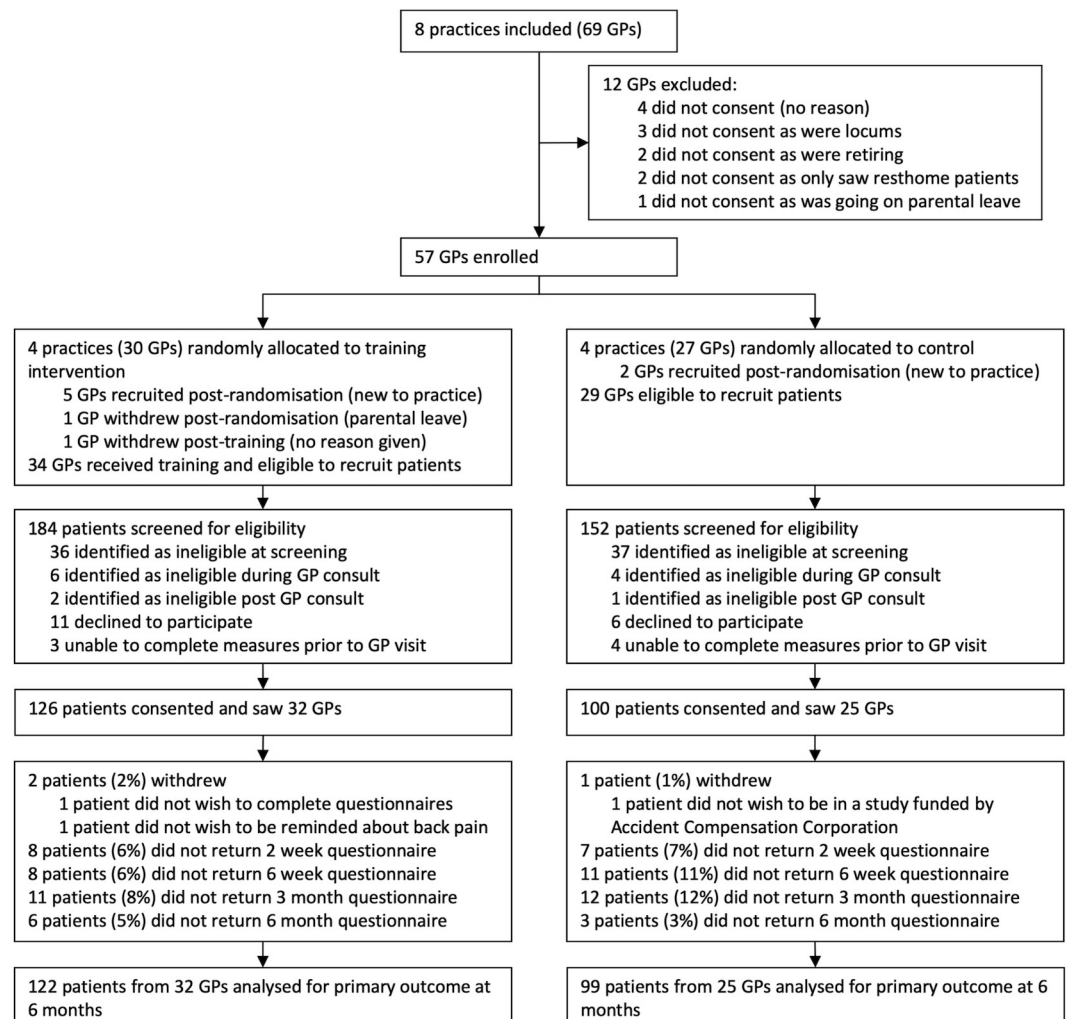


Fig 2. Trial profile. Supplementary data available in S1 Appendix S4 (p 3). GP, general practitioner.

<https://doi.org/10.1371/journal.pmed.1002897.g002>

Table 1. Baseline characteristics of GP participants.

GP characteristic	FREE (n = 34 GPs in 4 practices) Frequency (%) or mean (SD)	Control (n = 29 GPs in 4 practices) Frequency (%) or mean (SD)
Age (years)	47.0 (13.1)	45.9 (12.3)
Gender (female)	16 (47.1%)	15 (51.7%)
Years' GP experience	14.4 (11.5)	14.7 (12.9)
Ethnicity ^a		
European	27 (81.8%)	18 (64.3%)
Māori ^b	1 (3.0%)	0 (0.0%)
Pacific	0 (0.0%)	1 (3.6%)
Asian	5 (15.2%)	8 (28.6%)
Other ^c	0 (0.0%)	1 (3.6%)
Previous back pain		
Never	2 (5.9%)	4 (13.8%)
Yes	28 (82.4%)	20 (69.0%)
Current	4 (11.8%)	5 (17.2%)
HC-PAIRS ^d	37.9 (9.7)	39.4 (9.7)
Back-PAQ ^e	18.1 (15.3)	14.5 (12.7)
Confidence ^f	9.7 (2.7)	9.3 (3.6)
Vignette guideline concordance		
Activity	23 (67.6%)	18 (62.1%)
Work	24 (70.6%)	21 (72.4%)
Rest	30 (88.2%)	23 (79.3%)

^aParticipants could select more than one option.

^bMāori are the indigenous people of New Zealand.

^cOther includes people who define their ethnicity as Middle Eastern, Latin American, African.

^dRange 13 to 91, higher scores represent stronger attitudes that pain justifies disability and activity limitation.

^eRange -68 to 68, lower scores represent more negative (or unhelpful) beliefs.

^fConfidence to manage LBP measured with Provider Self Confidence Tool, range 4 to 16, lower scores indicate more confidence.

Abbreviations: Back-PAQ, Back Pain Attitudes Questionnaire; FREE, Fear Reduction Exercised Early; GP, general practitioner; HC-PAIRS, Health Care Providers' Pain And Impairment Relationship Scale

<https://doi.org/10.1371/journal.pmed.1002897.t001>

practices (100 enrolled). Sufficient data were available to include 98% of patient participants in primary outcome analysis. All patient follow-up data were collected by 6 March 2018. Patient participant characteristics were reasonably balanced between groups (Table 2), although there were slight differences in participant ethnicity profiles, and the FREE arm had a slightly higher deprivation profile than the control arm. Most patients had back pain for less than 6 weeks (88%), currently had leg pain (67%), and had experienced previous back pain (83%). Thirty percent had not previously sought healthcare for back pain.

Changes in patient outcomes are shown in Fig 3 and Table 3. The intervention did not reduce patient RMDQ scores compared with the control treatment at 6 months (mean difference 0.57, 95% CI -0.64 to 1.78; $p = 0.354$; higher scores in FREE arm) nor did it reduce NPRS back pain scores at 6 months (mean difference -0.15, -0.83 to 0.53; $p = 0.664$). The RMDQ difference met the predefined criterion to indicate noninferiority (lower end of CI for difference excluded MCID of 2.5 points relative to control). Sensitivity analyses examining the impact of FREE in patients meeting the original eligibility criteria and using different approaches to handle missing baseline covariate data returned highly comparable results (S1

Table 2. Baseline characteristics of patient participants.

Patient characteristic	FREE (n = 126, recruited by 32 GPs) Frequency (%) or mean (SD)	Control (n = 100, recruited by 25 GPs) Frequency (%) or mean (SD)
Age (years)	46.2 (14.5)	45.9 (14.4)
Gender (female)	60 (47.6%)	45 (45.0%)
Ethnicity ^a		
European	82 (65.1%)	77 (77.0%)
Māori ^b	18 (14.3%)	14 (14.0%)
Pacific	13 (10.3%)	5 (5.0%)
Asian	12 (9.5%)	3 (3.0%)
Other ^c	1 (0.8%)	1 (1.0%)
NZDep quintile ^d		
1	24 (19.0%)	24 (24.0%)
2	25 (19.8%)	12 (12.0%)
3	20 (15.9%)	33 (33.0%)
4	22 (17.5%)	19 (19.0%)
5	35 (27.8%)	12 (12.0%)
Back pain duration ^e		
0–1 week	89 (71.2%)	76 (76.0%)
2–5 weeks	19 (15.2%)	15 (15.0%)
6–11 weeks	7 (5.6%)	6 (6.0%)
3–5 months	7 (5.6%)	2 (2.0%)
≥6 months	3 (2.4%)	1 (1.0%)
Leg pain present	81 (66.4%)	62 (68.1%)
Previous back pain	106 (84.8%)	81 (81.0%)
Previous HCP care for back pain ^f		
In past	85 (67.5%)	64 (64.0%)
In past 3 months	10 (7.9%)	9 (9.0%)
Current	10 (7.9%)	8 (8.0%)
RMDQ	12.6 (5.4)	12.7 (5.3)
NPRS Back ^g	6.9 (1.9)	6.9 (1.7)
NPRS Leg ^g	3.5 (3.2)	3.6 (3.2)
DRS ^g	6.3 (2.3)	6.2 (2.1)
EQ-5D ^g	0.5 (0.2)	0.4 (0.2)
PSEQ-2 ^g	4.0 (1.6)	4.2 (1.7)
Recovery expectations ^g		
4 weeks	5.0 (1.8)	5.1 (1.6)
3 months	5.5 (1.6)	5.5 (1.5)
Fear avoidance ^g	5.0 (1.5)	4.8 (1.6)
Anxiety ^g	4.7 (1.7)	4.5 (1.8)
Catastrophisation ^g	3.3 (2.0)	3.3 (2.0)

^aparticipants could select more than one option.

^bMāori are the indigenous people of New Zealand.

^cOther includes people who define their ethnicity as, Middle Eastern, Latin American, African.

^dQuintile 1 represents people living in the least deprived 20% of small areas, Quintile 5 represents people living in the most deprived 20% of small areas.

^eBack pain duration is reported in number of complete weeks/months.

^fParticipants could select more than one option.

^gData missing at baseline are presented in the [S1 Appendix](#) p 7.

Abbreviations: DRS, disability rating scale; EQ-5D, EuroQoL-5D; FREE, Fear Reduction Exercised Early; GP, general practitioner; HCP, Health Care Professional; NPRS, Numeric Pain Rating Scale; NZDep, New Zealand index of socioeconomic deprivation; PSEQ-2, two item Pain Self-Efficacy Questionnaire; RMDQ, Roland Morris Disability Questionnaire

<https://doi.org/10.1371/journal.pmed.1002897.t002>

[Appendix p 5](#)). The ICC (as a measure of clustering of outcomes by GP) for the RMDQ at 6 months was 0.16 (95% CI 0.09–0.24); ICCs for secondary outcomes are given in the [S1 Appendix \(p 4\)](#).

GP participants did not report any adverse events or incidents of serious pathology during the trial. Patient participants reported 55 health events that they considered to be serious or unexpected, and these were investigated as potential adverse events. No serious adverse events were reported. A full description of all potential harms is presented in the [S1 Appendix \(p 15\)](#). In brief, of these 55 patient-reported events, 26 were classified as mild (17 intervention; 9 control), 24 were classified as moderate (14 intervention; 10 control), and 5 as serious (4 intervention; 1 control). Only 1 (moderate) health event was classified as potentially being related to study participation, and this affected a control group participant who experienced an activity-related gluteal tear during recovery from LBP. All serious health events reported were unrelated to study participation; however, 3 of these resulted in participants being excluded from the trial because these serious conditions (spinal infection, common iliac artery stenosis, and pulmonary embolism) were criteria for exclusion.

With respect to psychosocial indices, there was a significant reduction in patient fear avoidance at 2 weeks in the FREE arm (mean difference -0.65 , 95% CI -1.16 to -0.14 ; $p = 0.013$), but not at 6 weeks (mean difference -0.22 , 95% CI -0.80 to 0.42 ; $p = 0.42$). No differences were seen in patient pain self-efficacy, recovery expectations, anxiety, or catastrophisation ([S1 Appendix p 13](#)).

Patients in the FREE arm were slightly less satisfied with the information received immediately following their consultation, but no other satisfaction differences were observed between groups ([S1 Appendix p 10](#)).

Comprehensive GP results are presented in the [S1 Appendix \(p 18\)](#). Changes in GP attitude, knowledge, and confidence scores are shown in [Fig 4](#) and [Table 4](#). GPs trained in the FREE approach had significantly greater improvements in HC-PAIRS scores at 4 weeks (mean difference -6.80 ; 95% CI -9.62 to -3.98 ; $p < 0.001$) and at 4 months (-4.39 , 95% CI -7.80 to -0.99 ; $p = 0.011$), Back-PAQ scores at 4 weeks (32.64 , 95% CI 27.46 to 37.81 ; $p = 0.002$) and 4 months (27.76 , 95% CI 20.45 to 35.08 ; $p < 0.001$), and confidence to manage LBP at 4 weeks (-2.31 , 95% CI -3.75 to -0.88 ; $p < 0.001$) and 4 months (-2.11 , 95% CI -3.35 to -0.88 ; $p < 0.001$).

Analysis of GP clinical notes and patient report post consultation found that intervention arm GPs delivered more guideline-consistent care than control-arm GPs ([S1 Appendix p 21](#)). Patients who saw intervention-arm GPs were more likely to report receiving advice to continue with normal activity (68.6%, 95% CI 60.8 to 75.5 versus 43.7%, 95% CI 32.9 to 55.0) and less likely to report being referred for physiotherapy, osteopathy, chiropractic, and/or acupuncture (24.6%, 95% CI 16.4 to 35.1 versus 68.0%, 95% CI 58.2 to 76.4). Blinded analysis of one randomly selected audio recording for each recruiting GP with available recordings found that 82.6% (95% CI 61.2 to 95.0) of intervention GPs met the predefined threshold for FREE concordance compared with 0% (95% CI 0.0 to 11.7) of control group GPs. High proportions of GPs in both arms reported guideline-consistent management advice in relation to the clinical vignette. GPs in the FREE arm were more likely to give guideline-consistent activity vignette recommendations at 4 months (unadjusted estimates: 87.9% versus 69.0% for FREE and control, respectively; odds ratio [OR] 4.6, 95% CI 0.7 to 30.5), but there were no differences in guideline consistency of work or rest vignette recommendations ([S1 Appendix p 26](#)).

Details of healthcare resource use, healthcare costs, and health-related quality of life (EQ-5D scores and QALYs) are provided in the [S1 Appendix \(p 29\)](#). The cost-effectiveness plane is shown in [Fig 5](#). The FREE intervention dominated control, with higher QALY gains and lower costs, resulting in negative cost-utility ratios ($-\text{NZ}\$69,002$; $-\$55,223$; and $-\$86,440$ per QALY

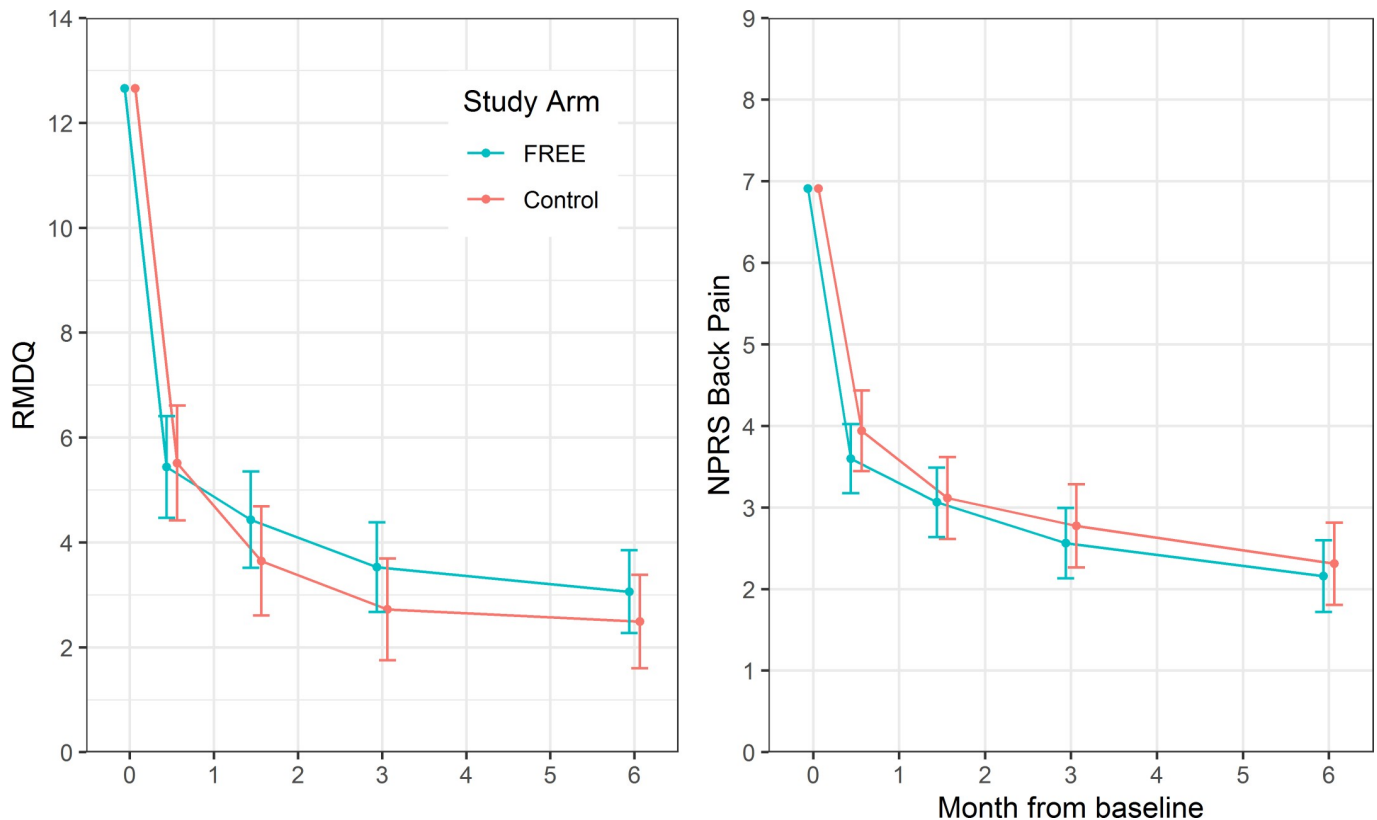


Fig 3. Mean patient participant RMDQ and NPRS scores by study arm at baseline and follow-up. Error bars represent 95% CIs of mean. FREE, Fear Reduction Exercised Early; NPRS, Numeric Pain Rating Scale; RMDQ, Roland Morris Disability Questionnaire.

<https://doi.org/10.1371/journal.pmed.1002897.g003>

gained from the societal, health system, and ACC perspectives, respectively). The FREE intervention demonstrated an INMB of \$609 (95% CI –1,385 to 2,603), \$542 (95% CI –678 to 1,762), and \$695 (95% CI –496 to 1,885) from the societal, health system, and ACC perspectives, respectively, at the 1× GDP/capita WTP threshold (2017 NZ\$55,615).

Discussion

Findings from this trial suggest that patients with LBP who receive care from GPs trained in the FREE approach do not have improved disability or pain outcomes compared with those who receive usual care. In contrast, the FREE intervention improved GP attitudes, knowledge, and confidence and changed GP LBP management behaviours to be more guideline concordant. Economic evaluation was inconclusive but indicated the FREE approach may reduce the overall costs of LBP to the healthcare system and society.

Analyses using multiple consultation data sources demonstrated that the FREE intervention improved GP guideline concordance, countering systematic review findings that GP educational opportunities produce little or no improvement in GP guideline-consistent behaviour [31]. Notably, GPs trained in FREE were more likely to consider psychosocial factors, provide explanation, and provide advice to remain active. The FREE intervention appears to have improved GPs' confidence in their ability to provide LBP care independently (i.e., without referral for additional healthcare); referral rates to rehabilitation providers were much lower in the intervention arm than in the control arm (which appeared high in comparison to international norms). Nonsignificant trends for reduced imaging and reduced specialist referral were

Table 3. Mean patient change scores at 2 weeks, 6 weeks, 3 months, and 6 months.

Characteristic	FREE mean change from baseline (95% CI)	Control mean change from baseline (95% CI)	Mean difference (95% CI)	P value
RMDQ¹				
2 weeks	-7.22 (-8.19 to -6.25)	-7.14 (-8.24 to -6.05)	-0.08 (-1.56 to 1.41)	0.920
6 weeks	-8.22 (-9.14 to -7.31)	-9.01 (-10.05 to -7.97)	0.79 (-0.62 to 2.20)	0.271
3 months	-9.13 (-9.98 to -8.28)	-9.93 (-10.90 to -8.97)	0.80 (-0.51 to 2.12)	0.230
6 months	-9.60 (-10.39 to -8.81)	-10.17 (-11.06 to -9.28)	0.57 (-0.64 to 1.78)	0.354
NPRS Back Pain²				
2 weeks	-3.31 (-3.74 to -2.89)	-2.97 (-3.47 to -2.48)	-0.34 (-1.01 to 0.32)	0.316
6 weeks	-3.85 (-4.27 to -3.42)	-3.80 (-4.30 to -3.29)	-0.05 (-0.72 to 0.62)	0.878
3 months	-4.35 (-4.78 to -3.92)	-4.14 (-4.65 to -3.63)	-0.21 (-0.89 to 0.47)	0.544
6 months	-4.75 (-5.19 to -4.31)	-4.60 (-5.10 to -4.10)	-0.15 (-0.83 to 0.53)	0.664
DRS³				
2 weeks	-2.94 (-3.36 to -2.51)	-2.68 (-3.18 to -2.19)	-0.25 (-0.91 to 0.41)	0.456
6 weeks	-3.78 (-4.19 to -3.36)	-3.63 (-4.12 to -3.13)	-0.15 (-0.81 to 0.51)	0.660
3 months	-4.27 (-4.69 to -3.84)	-3.86 (-4.36 to -3.37)	-0.40 (-1.07 to 0.26)	0.235
6 months	-4.73 (-5.14 to -4.32)	-4.45 (-4.93 to -3.98)	-0.28 (-0.92 to 0.36)	0.394

¹Number of participants contributing to regression models. Intervention: participants, *n* = 122; clusters, *n* = 32. Control: participants, *n* = 99; clusters, *n* = 25.

²Number of participants contributing to regression models. Intervention: participants, *n* = 119; clusters, *n* = 32. Control: participants, *n* = 90; clusters, *n* = 25.

³Number of participants contributing to regression models. Intervention: participants, *n* = 119; clusters, *n* = 32. Control: participants, *n* = 90; clusters, *n* = 25.

Abbreviations: DRS, disability rating scale; FREE, Fear Reduction Exercised Early; NPRS, Numeric Pain Rating Scale; RMDQ, Roland Morris Disability Questionnaire

<https://doi.org/10.1371/journal.pmed.1002897.t003>

also observed for intervention-arm GPs. The slight reduction in intervention-arm patient satisfaction is consistent with reduced satisfaction reported in another recent GP guideline implementation study [8]. Those authors hypothesized this may be due to patients' unfulfilled expectations or disagreeing with guideline concordant advice [8]. Further research is required to explore patient responses to guideline concordant care.

Our finding that improving GP behaviours toward guideline concordance did not improve patient recovery outcomes challenges the assumption that improved guideline concordance will improve healthcare outcomes [3]. The FREE intervention has a large focus on education and addressing psychosocial barriers to recovery and prescribing simple exercises, because adding these guideline concordant interventions has been found to improve the cost-effectiveness of GP care of LBP [6]. FREE is delivered during a standard consultation, raising the possibility that patients did not receive sufficient education to improve outcomes. However, adding 2 hours of primary care-based intensive education to recommended first-line care for people with LBP at risk of poor outcomes did not improve pain and disability outcomes in a recent study [32].

Our findings suggest the FREE intervention achieved GP behaviour change targets with respect to exploring psychosocial barriers to recovery and providing reassurance and explanation in relation to these barriers but that these changes did not improve patient recovery outcomes. Jellema and colleagues [33] did not find improved patient outcomes after training GPs to identify and manage psychosocial factors, concluding that this was due to GPs neither adequately identifying these factors nor having sufficient time to address these. The Subgroups for Targeted Treatment (STarT) Back tool screens for psychosocial factors so that care can be matched to patient risk of poor recovery, including provision of psychosocially informed physiotherapy to those at high risk of poor recovery outcomes [23]. The STarT Back approach was found to produce a statistically significant but not clinically meaningful improvement in recovery outcomes in the United Kingdom [23], but the recent United States Matching

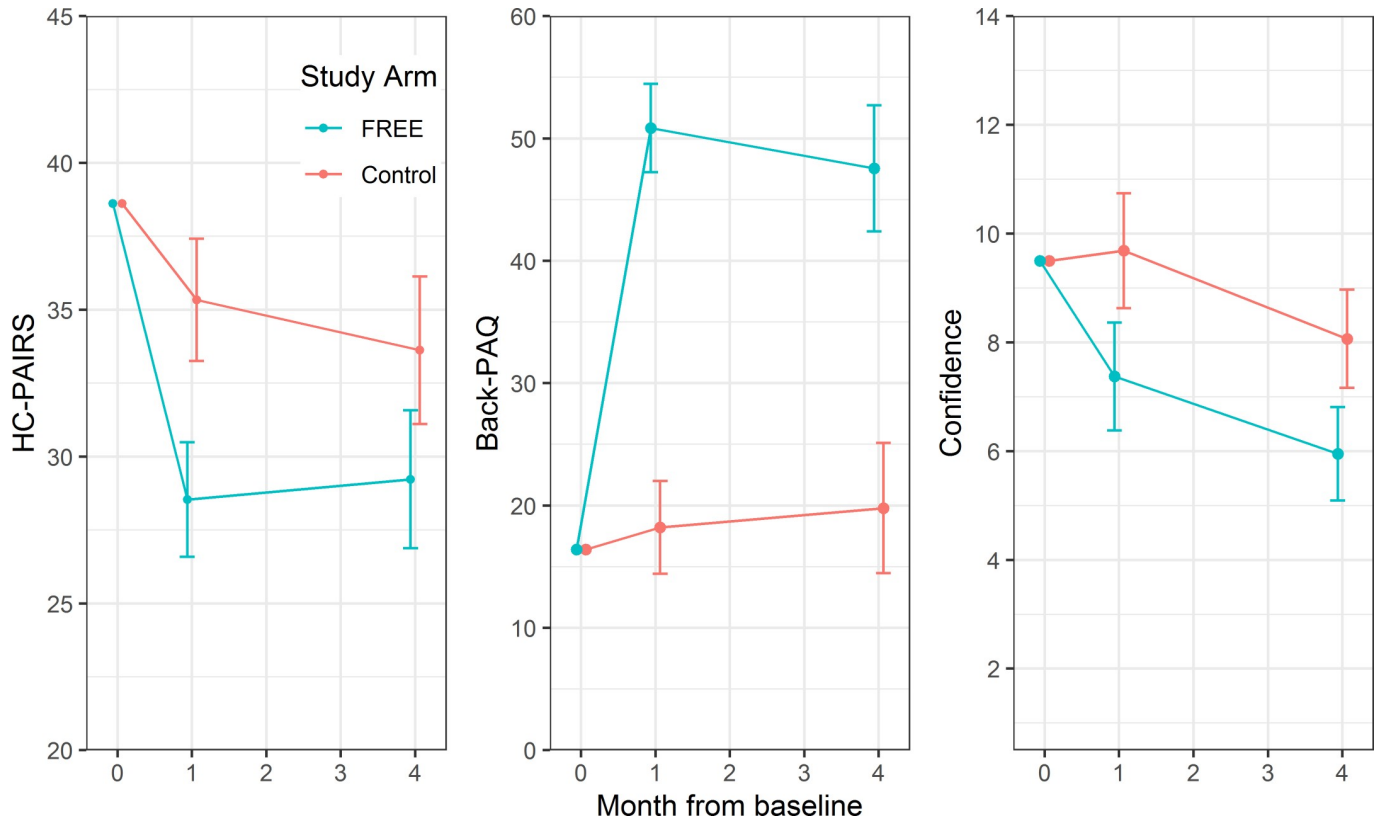


Fig 4. Mean GP participant HC-PAIRS, Back-PAQ, and confidence to manage LBP scores by study arm at baseline and follow-up. Error bars represent 95% CIs of mean. Back-PAQ, Back Pain Attitudes Questionnaire; FREE, Fear Reduction Exercised Early; GP, general practitioner; HC-PAIRS, Health Care Providers Pain and Impairment Relationship Scale.

<https://doi.org/10.1371/journal.pmed.1002897.g004>

Table 4. Mean GP change scores at 4 weeks and 4 months postintervention training.

Characteristics	FREE mean change from baseline (95% CI)	Control mean change from baseline (95% CI)	Mean difference (95% CI)	P value
HC-PAIRS¹				
4 weeks	-10.08 (-12.02 to -8.13)	-3.28 (-5.36 to -1.20)	-6.80 (-9.62 to -3.98)	<0.001
4 months	-9.39 (-11.74 to -7.04)	-4.99 (-7.50 to -2.48)	-4.39 (-7.80 to -0.99)	0.011
Back-PAQ²				
4 weeks	34.44 (30.84 to 38.04)	1.81 (-1.98 to 5.59)	32.64 (27.46 to 37.81)	0.002
4 months	31.15 (26.01 to 36.29)	3.39 (-1.93 to 8.70)	27.76 (20.45 to 35.08)	<0.001
Confidence³				
4 weeks	-2.12 (-3.11 to -1.14)	0.19 (-0.87 to 1.24)	-2.31 (-3.75 to -0.88)	<0.001
4 months	-3.55 (-4.40 to -2.69)	-1.43 (-2.34 to -0.53)	-2.11 (-3.35 to -0.88)	<0.001

¹Range 13 to 91, higher scores represent stronger attitudes that pain justifies disability and activity limitation. Intervention: GPs, *n* = 33; clusters, *n* = 4. Control: GPs, *n* = 29; clusters, *n* = 4.

²Range -68 to 68, lower scores represent more negative (or unhelpful) beliefs. Intervention: GPs, *n* = 33; clusters, *n* = 4. Control: GPs, *n* = 29; clusters, *n* = 4.

³Confidence to manage LBP measured with Provider Self Confidence Tool, range 4 to 16, lower scores indicate more confidence. Intervention: GPs, *n* = 33; clusters, *n* = 4. Control: GPs, *n* = 29; clusters, *n* = 4.

Abbreviations: Back-PAQ, Back Pain Attitudes Questionnaire; FREE, Fear Reduction Exercised Early; GP, general practitioner; HC-PAIRS, Health Care Providers' Pain And Impairment Relationship Scale

<https://doi.org/10.1371/journal.pmed.1002897.t004>

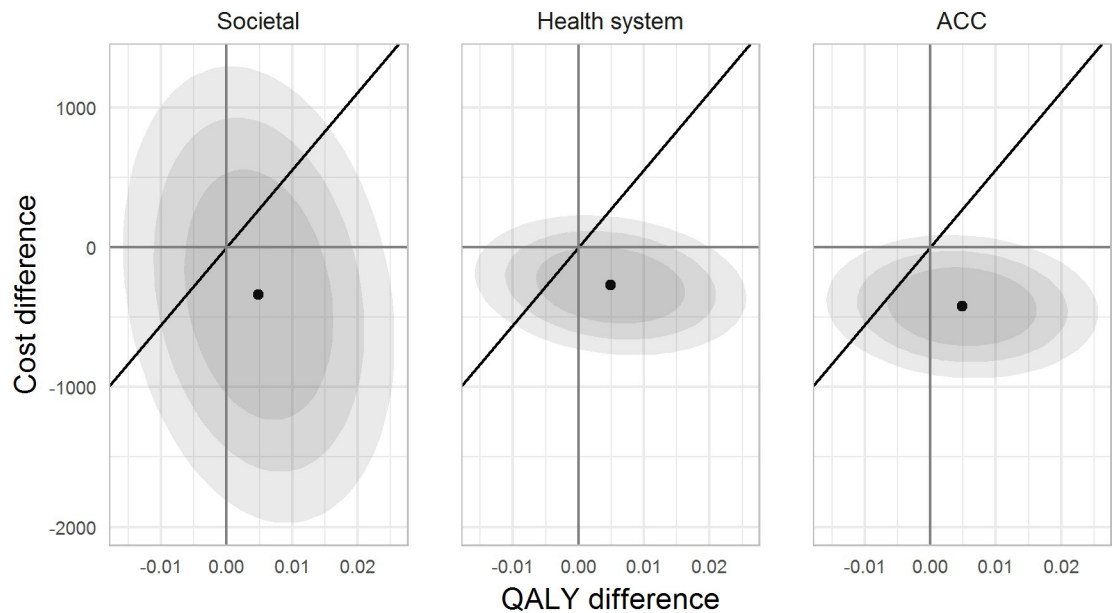


Fig 5. Cost-effectiveness plane. Shaded areas show 50% (darker), 75%, and 90% (lighter) confidence ellipses. Solid line shows WTP threshold at $1 \times$ GDP per capita; areas below and to the right of the line indicate the intervention is cost-effective relative to control; above and to the left indicate the intervention is not cost-effective. ACC, Accident Compensation Corporation; GDP, gross domestic product; QALY, quality-adjusted life year; WTP, willingness to pay.

<https://doi.org/10.1371/journal.pmed.1002897.g005>

Appropriate Treatments to Consumer Healthcare needs (MATCH) trial did not find improvements in clinical behaviour or patient outcomes [34]. Although psychosocial factors are associated with recovery outcomes, findings from these trials do not provide strong support for the theory that addressing psychosocial factors will improve recovery outcomes. Healthcare utilisation has been proposed as a measure of patient reassurance [35]. Our trial and the United Kingdom STarT Back trial both found reduced healthcare utilisation in the intervention arms. This suggests that exploring psychosocial factors and providing appropriate reassurance might reduce healthcare use while achieving similar recovery outcomes [23].

This trial had a number of strengths and limitations. Recruitment of patients into primary care randomised controlled trials can be challenging [36]. The current trial attempted to optimise recruitment by placing research nurses in practices to recruit patient participants as they presented to the practice and hence before consulting their GP. To our knowledge, this is the first study that has recruited people presenting with LBP prior to GP consultation. This process avoided GP recruitment bias and time delays between initial healthcare interaction and completion of baseline measures, as well as enabling patients to remain blind to the intervention. One limitation is that it was not possible to mask research nurses to the group allocation of the practices in which they were based. To mitigate this potential for recruitment bias, we used identical scripts, information sheets, and screening criteria. Mean outcome variable values (i.e., clinical characteristics) at baseline were almost identical in the 2 study arms, suggesting that there was no particular bias arising in the clinical characteristics of patients recruited in the 2 study arms. Recruitment prior to consultation also enabled exploration of the content of the consultations, collection of patient perspectives with reduced recall bias, and analysis of the impact of that consultation on outcome and process variables such as psychosocial indices. The collection of consult-related information from multiple sources (audio recording, direct patient report immediately post consult, electronic consultation note audit) was important to provide a comprehensive understanding of the consultation. Notwithstanding these benefits,

the limited time between practice presentation and being called for their GP consult meant that some patient participants were not able to complete all baseline measures, and some imputation was required to enable the prespecified adjustment of primary outcome analysis. Sensitivity analyses indicated this did not affect the interpretation of results.

Excellent follow-up rates (97% intervention and 99% control contributing data to final analysis) enabled the estimated target number of participants to adequately power the primary outcome analysis despite not meeting recruitment targets. Cluster effects (ICCs) were greater than anticipated, but we also recruited from more clusters than anticipated (a higher number of smaller clusters is preferable). The precision of the primary outcome (reflected in its 95% CI) makes us confident that the FREE intervention did not produce meaningfully better (or worse) disability outcomes than usual care. Notwithstanding this, the study was underpowered for some employment, healthcare use, and economic outcomes.

Control group participants in this study demonstrated large improvements in disability. As the mean control group RMDQ score was 2.5 points at 6 months, it would not have been possible for the FREE arm to show a clinically meaningful improvement on the RMDQ measure. Although the RMDQ is recommended as a core LBP outcome measure [14], these results raise questions about its appropriateness as a primary outcome for LBP in this population. Future trials might consider participation measures, such as days off work, or healthcare resource use, as primary outcomes to assess these changes in the burden of back pain without being limited by floor effects observed in the long-term patient-reported outcome measures used in this study. This would, however, require substantially larger sample sizes than measures of patient-reported pain or disability.

A major strength for generalisability of findings is that this study was delivered in a real-life clinical context. Broad patient inclusion criteria were used to best match daily practice. Consultation content and intervention fidelity were measured, but GP behaviour was not controlled. These characteristics increase confidence that FREE could be implemented into standard practice and could be applied to undifferentiated back pain. A parallel implementation study (reported separately) enabled exploration of implementation constructs without gathering additional data from intervention-arm participants (such as qualitative interviews) that may have acted as co-interventions.

The FREE approach met the predefined noninferiority criterion for the RMDQ [11]. Trends towards reduced healthcare use, reduced time off work, and reduced overall costs in the intervention group were consistent with the measured differences in GP behaviour and the targets of FREE approach training, but estimates were not sufficiently precise to confirm cost savings. These findings suggest that FREE may be an effective mechanism to improve GP contributions to LBP care and improve efficiency without negatively impacting patient outcomes. Extending the intervention to other parts of the system, such as employers and other healthcare providers, may provide an opportunity to optimise the impact of FREE through reinforcing key messages and enabling recommended patient behaviours.

This trial demonstrated that a brief training intervention with supporting resources can improve GP attitudes, knowledge, confidence, and clinical behaviour related to LBP management. The intervention did not improve patient disability or pain outcomes more than usual care, but may reduce unnecessary healthcare use, thereby reducing exposure to harm and enabling improved allocation of healthcare resources.

Supporting information

S1 Checklist. CONSORT checklist. CONSORT, Consolidated Standards of Reporting Trials (DOCX)

S2 Checklist. Control description according to the TIDieR checklist. TIDieR, Template for Intervention Description and Replication (DOCX)

S3 Checklist. Intervention description according to the TIDieR checklist. TIDieR, Template for Intervention Description and Replication (DOCX)

S1 Appendix. Additional reporting of methods, analysis, and results. (DOCX)

Acknowledgments

We would like to thank the patients, GPs, and practices that participated, the members of the data monitoring committee (including Prof. Di Sarfati and Assoc. Prof. Lynn McBain), staff from Te Awakairangi Health Network (Barbara Moore and Sandy Bhawan), research nurses (Sarah Bailey, Stacey Byron, Hope Gillespie, Robyn Ingleton, Robyn Telfer, Kelly Waho), and the project administrator (Freya Morris-Cole).

Author Contributions

Conceptualization: Ben Darlow, James Stanley, Sarah Dean, J. Haxby Abbott, Fiona Mathieson, Anthony Dowell.

Data curation: James Stanley, Sue Garrett.

Formal analysis: James Stanley, J. Haxby Abbott, Ross Wilson.

Funding acquisition: Ben Darlow, James Stanley, Sarah Dean, J. Haxby Abbott, Fiona Mathieson, Anthony Dowell.

Investigation: Ben Darlow, Sue Garrett.

Methodology: Ben Darlow, James Stanley, Sarah Dean, J. Haxby Abbott, Sue Garrett, Fiona Mathieson, Anthony Dowell.

Project administration: Ben Darlow, Anthony Dowell.

Supervision: Ben Darlow, Anthony Dowell.

Visualization: James Stanley, Ross Wilson.

Writing – original draft: Ben Darlow.

Writing – review & editing: James Stanley, Sarah Dean, J. Haxby Abbott, Sue Garrett, Ross Wilson, Fiona Mathieson, Anthony Dowell.

References

1. GBD Injury Incidence and Prevalence Collaborators. Global, regional, and national incidence, prevalence, and years lived with disability for 310 diseases and injuries, 1990–2015: a systematic analysis for the Global Burden of Disease Study 2015. *Lancet*. 2016; 388(10053):1545–602. [https://doi.org/10.1016/S0140-6736\(16\)31678-6](https://doi.org/10.1016/S0140-6736(16)31678-6) PMID: 27733282
2. Hartvigsen J, Hancock MJ, Kongsted A, Louw Q, Ferreira ML, Genevay S, et al. What low back pain is and why we need to pay attention. *Lancet*. 2018; 391(10137):2356–67. [https://doi.org/10.1016/S0140-6736\(18\)30480-X](https://doi.org/10.1016/S0140-6736(18)30480-X) PMID: 29573870
3. Foster NE, Anema JR, Cherkin D, Chou R, Cohen SP, Gross DP, et al. Prevention and treatment of low back pain: evidence, challenges, and promising directions. *Lancet*. 2018; 391(10137):2368–83. [https://doi.org/10.1016/S0140-6736\(18\)30489-6](https://doi.org/10.1016/S0140-6736(18)30489-6) PMID: 29573872

4. Williams CM, Maher CG, Hancock MJ, McAuley JH, McLachlan AJ, Britt H, et al. Low Back Pain and Best Practice Care A Survey of General Practice Physicians. *Arch Intern Med*. 2010; 170(3):271–7. <https://doi.org/10.1001/archinternmed.2009.507> PMID: 20142573
5. Buchbinder R, van Tulder M, Öberg B, Costa LM, Woolf A, Schoene M, et al. Low back pain: a call for action. *Lancet*. 2018; 391(10137):2384–8. [https://doi.org/10.1016/S0140-6736\(18\)30488-4](https://doi.org/10.1016/S0140-6736(18)30488-4) PMID: 29573871
6. Lin CW, Haas M, Maher CG, Machado LA, van Tulder MW. Cost-effectiveness of general practice care for low back pain: a systematic review. *Eur Spine J*. 2011; 20(7):1012–23. <https://doi.org/10.1007/s00586-010-1675-4> PMID: 21203890
7. Mesner SA, Foster NE, French SD. Implementation interventions to improve the management of non-specific low back pain: a systematic review. *BMC Musculoskelet Disord*. 2016; 17:258. <https://doi.org/10.1186/s12891-016-1110-z> PMID: 27286812
8. Riis A, Jensen CE, Bro F, Maindal HT, Petersen KD, Bendtsen MD, et al. A multifaceted implementation strategy versus passive implementation of low back pain guidelines in general practice: a cluster randomised controlled trial. *Implement Sci*. 2016; 11(1):143. <https://doi.org/10.1186/s13012-016-0509-0> PMID: 27769263
9. Damschroder LJ, Aron DC, Keith RE, Kirsh SR, Alexander JA, Lowery JC. Fostering implementation of health services research findings into practice: a consolidated framework for advancing implementation science. *Implement Sci*. 2009; 4(1):50. <https://doi.org/10.1186/1748-5908-4-50> PMID: 19664226
10. Darlow B. The development of a new approach to acute low back pain management in general practice [Doctoral thesis]. Wellington: University of Otago; 2014.
11. Darlow B, Stanley J, Dean S, Abbott JH, Garrett S, Mathieson F, et al. The Fear Reduction Exercised Early (FREE) approach to low back pain: study protocol for a randomised controlled trial. *Trials*. 2017; 18(1):484. <https://doi.org/10.1186/s13063-017-2225-8> PMID: 29041947
12. Roland M, Morris R. A study of the natural history of back pain. Part I: development of a reliable and sensitive measure of disability in low-back pain. *Spine*. 1983; 8(2):141–4. <https://doi.org/10.1097/00007632-198303000-00004> PMID: 6222486
13. The EuroQol Group. EuroQol—a new facility for the measurement of health-related quality of life. *Health Policy*. 1990; 16(3):199–208.
14. Deyo RA, Battie M, Beurskens AJ, Bombardier C, Croft P, Koes B, et al. Outcome measures for low back pain research. A proposal for standardized use. *Spine*. 1998; 23(18):2003–13. <https://doi.org/10.1097/00007632-199809150-00018> PMID: 9779535
15. Lamb SE, Lall R, Hansen Z, Castelnuovo E, Withers EJ, Nichols V, et al. A multicentred randomised controlled trial of a primary care-based cognitive behavioural programme for low back pain. The Back Skills Training (BeST) trial. *Health Technol Assess*. 2010; 14(41):g1–281. <https://doi.org/10.3310/hta14410> PMID: 20807469
16. Pinto D, Robertson MC, Hansen P, Abbott JH. Good agreement between questionnaire and administrative databases for health care use and costs in patients with osteoarthritis. *BMC Med Res Methodol*. 2011; 11:45. <https://doi.org/10.1186/1471-2288-11-45> PMID: 21489280
17. Rainville J, Carlson N, Polatin P, Gatchel RJ, Indahl A, Volinn E. Exploration of physicians' recommendations for activities in chronic low back pain. *Spine*. 2000; 25(17):2210–20. <https://doi.org/10.1097/00007632-200009010-00012> PMID: 10973405
18. Smucker DR, Konrad TR, Curtis P, Carey TS. Practitioner self-confidence and patient outcomes in acute low back pain. *Arch Fam Med*. 1998; 7(3):223. PMID: 9596455
19. Darlow B, Perry M, Mathieson F, Stanley J, Melloh M, Marsh R, et al. The development and exploratory analysis of the Back Pain Attitudes Questionnaire (Back-PAQ). *BMJ Open*. 2014; 4(5). <https://doi.org/10.1136/bmjopen-2014-005251> PMID: 24860003
20. Evans DW, Foster NE, Underwood M, Vogel S, Breen AC, Pincus T. Testing the effectiveness of an innovative information package on practitioner reported behaviour and beliefs: The UK Chiropractors, Osteopaths and Musculoskeletal Physiotherapists Low back pain Management (COMPLeMENT) trial [ISRCTN77245761]. *BMC Musculoskelet Disord*. 2005; 6(41). <https://doi.org/10.1186/1471-2474-6-41> PMID: 16033646
21. Harris PA, Taylor R, Thielke R, Payne J, Gonzalez N, Conde JG. Research electronic data capture (REDCap)—A metadata-driven methodology and workflow process for providing translational research informatics support. *J Biomed Inform*. 2009; 42(2):377–81. <https://doi.org/10.1016/j.jbi.2008.08.010> PMID: 18929686
22. Beurskens A, De Vet H, Köke A. Responsiveness of functional status in low back pain: a comparison of different instruments. *Pain*. 1996; 65(1):71–6. [https://doi.org/10.1016/0304-3959\(95\)00149-2](https://doi.org/10.1016/0304-3959(95)00149-2) PMID: 8826492

23. Hill JC, Whitehurst DG, Lewis M, Bryan S, Dunn KM, Foster NE, et al. Comparison of stratified primary care management for low back pain with current best practice (STarT Back): a randomised controlled trial. *Lancet*. 2011; 378(9802):1560–71. [https://doi.org/10.1016/S0140-6736\(11\)60937-9](https://doi.org/10.1016/S0140-6736(11)60937-9) PMID: 21963002
24. Pocock SJ, Assmann SE, Enos LE, Kasten LE. Subgroup analysis, covariate adjustment and baseline comparisons in clinical trial reporting: current practice and problems. *Stat Med*. 2002; 21(19):2917–30. <https://doi.org/10.1002/sim.1296> PMID: 12325108
25. Committee for Proprietary Medicinal Products (CPMP). Points to consider on switching between superiority and non-inferiority. *Br J Clin Pharmacol*. 2001; 52(3):223–8. <https://doi.org/10.1046/j.0306-5251.2001.01397-3.x> PMID: 11560553
26. Groenwold RH, Donders ART, Roes KC, Harrell FE, Moons KG. Dealing with missing outcome data in randomized trials and observational studies. *Am J Epidemiol*. 2012; 175(3):210–7. <https://doi.org/10.1093/aje/kwr302> PMID: 22262640
27. White IR, Thompson SG. Adjusting for partially missing baseline measurements in randomized trials. *Stat Med*. 2005; 24(7):993–1007. <https://doi.org/10.1002/sim.1981> PMID: 15570623
28. Van Buuren S, Boshuizen HC, Knook DL. Multiple imputation of missing blood pressure covariates in survival analysis. *Stat Med*. 1999; 18(6):681–94. PMID: 10204197
29. Rubin DB. Multiple imputation after 18+ years. *J Am Stat Assoc*. 1996; 91(434):473–89.
30. Darlow B (2019) Data from: The Fear Reduction Exercised Early (FREE) approach to management of low back pain in general practice: a pragmatic cluster-randomised controlled trial. Dryad Digital Repository. Available from: <https://datadryad.org/review> <https://doi.org/10.5061/dryad.4t375b2> [cited 16 August 2019].
31. Brown VT, Underwood M, Mohamed N, Westwood O, Morrissey D. Professional interventions for general practitioners on the management of musculoskeletal conditions. *Cochrane Database Syst Rev*. 2016;(5):Art. No.: CD007495. <https://doi.org/10.1002/14651858.CD007495.pub2> PMID: 27150167
32. Traeger AC, Lee H, Hübscher M, et al. Effect of intensive patient education vs placebo patient education on outcomes in patients with acute low back pain: A randomized clinical trial. *JAMA Neurology*. 2019; 76(2):161–9. <https://doi.org/10.1001/jamaneurol.2018.3376> PMID: 30398542
33. Jellema P, Van Der Windt DAWM, Van Der Horst HE, Blankenstein AH, Bouter LM, Stalman WAB. Why is a treatment aimed at psychosocial factors not effective in patients with (sub)acute low back pain? *Pain*. 2005; 118(3):350–9. <https://doi.org/10.1016/j.pain.2005.09.002> PMID: 16289797
34. Cherkin D, Balderson B, Wellman R, Hsu C, Sherman KJ, Evers SC, et al. Effect of Low Back Pain Risk-Stratification Strategy on Patient Outcomes and Care Processes: the MATCH Randomized Trial in Primary Care. *J Gen Intern Med*. 2018; 33(8):1324–36. <https://doi.org/10.1007/s11606-018-4468-9> PMID: 29790073
35. Traeger AC, Hübscher M, Henschke N, Moseley GL, Lee H, McAuley JH. Effect of Primary Care–Based Education on Reassurance in Patients With Acute Low Back Pain: Systematic Review and Meta-analysis. *JAMA Internal Medicine*. 2015; 175(5):733–43. <https://doi.org/10.1001/jamainternmed.2015.0217> PMID: 25799308
36. Page MJ, French SD, McKenzie JE, O'Connor DA, Green SE. Recruitment difficulties in a primary care cluster randomised trial: investigating factors contributing to general practitioners' recruitment of patients. *BMC Med Res Methodol*. 2011; 11(35). <https://doi.org/10.1186/1471-2288-11-35> PMID: 21453543