

Supplementary Figure S5

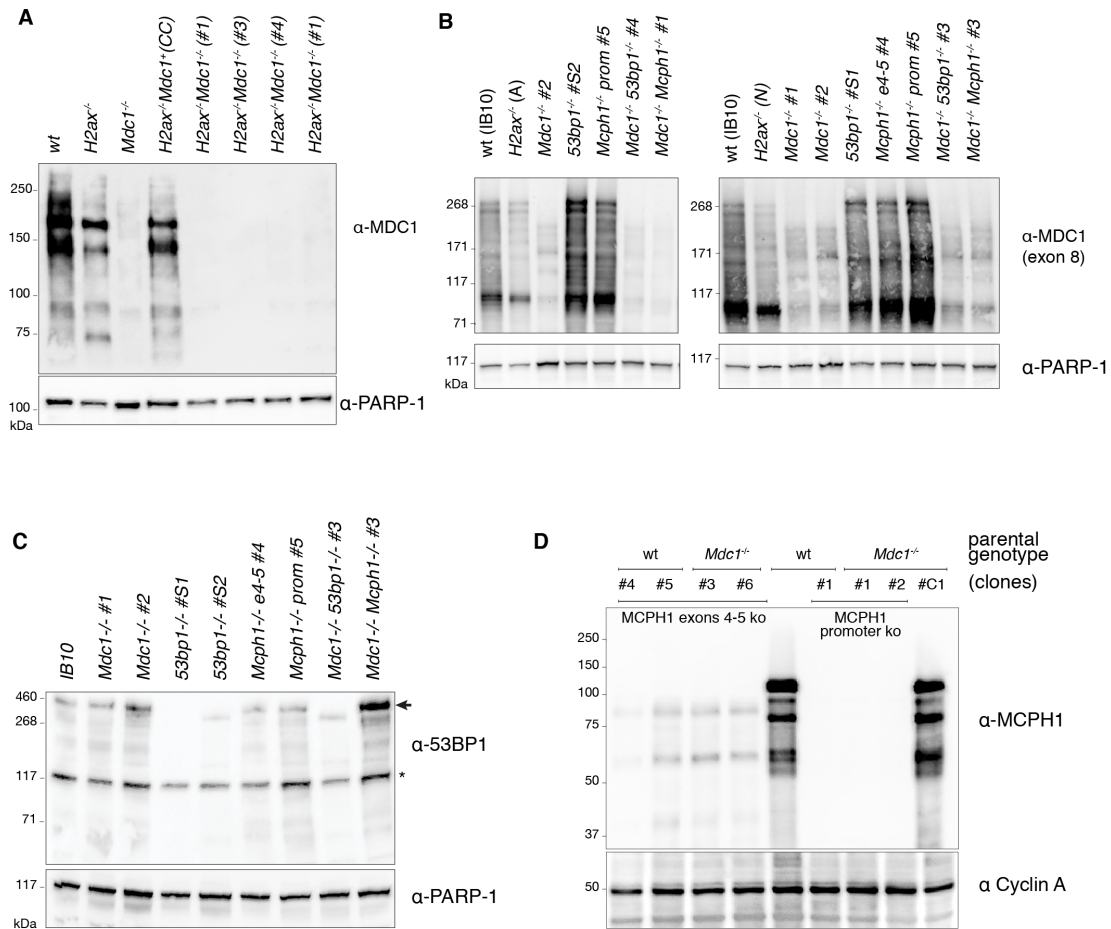


Figure S5 Immunoblots confirming the loss of protein expression from targeted genes Total cell extracts from the mES cell lines with indicated genotypes were fractionated by SDS-PAGE and immunoblotted with the indicated antibodies: **(A)** anti-MDC1 monoclonal and **(B)** polyclonal raised against the region encoded by exon 8, **(C)** anti-53BP1 and **(D)** anti-MCPH1. Membranes were re-probed with anti-PARP-1 antibody to assess relative loading. For each genotype at least two independent clones used in the experiments were tested. Clones that were derived from the CRISPR/Cas9-assisted gene targeting procedure but retained the wild-type allele (as determined by PCR genotyping) were used as controls in some experiments; these are indicated with letter C. Asterisk indicates non-specific band.