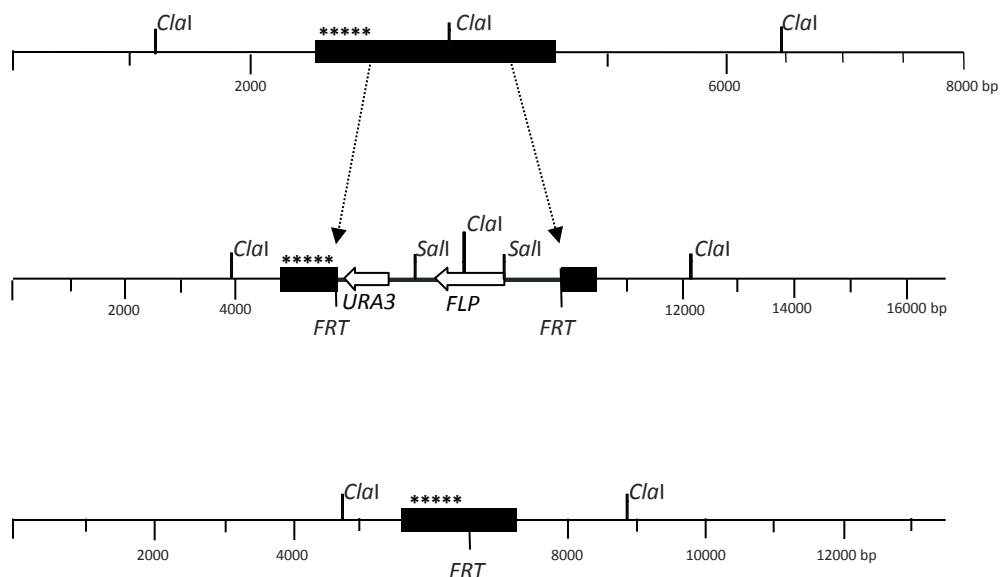
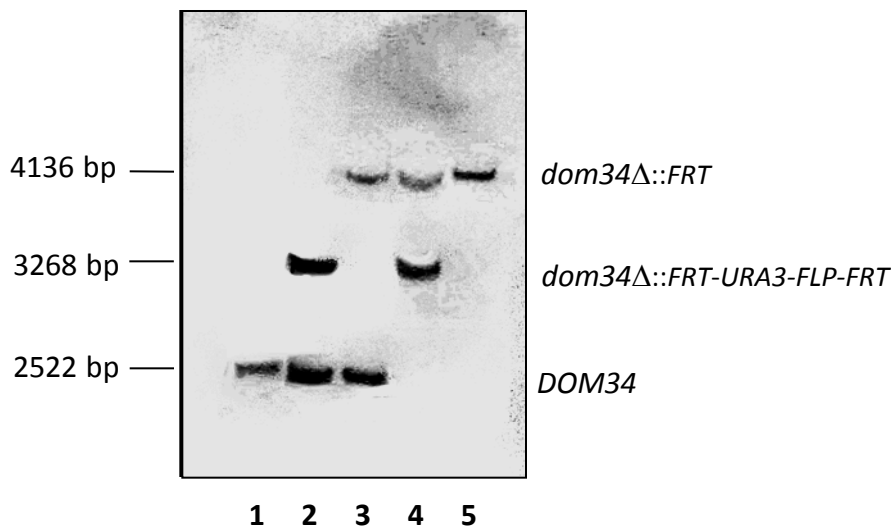


**A.**



**B.**



**S2 Fig. Disruption of *DOM34* locus.** (A) Scheme of wild-type *DOM34* locus, after disruption by the *FRT-URA3-FLP-FRT* cassette and after removal of the *URA3-FLP* sequences (top-to-bottom). (B) Southern blotting of genomic DNA in transformants. Total DNA was digested with *Clal* and *Sall* and blots were probed using a *DOM34* segment indicated by asterisks in (A). The fragment for the wild-type alleles is visible in lane 1, while the subsequent lanes demonstrate the course of disruption in derivative strains and the complete disruption of the two *DOM34* alleles in strain SK47 (lane 5).