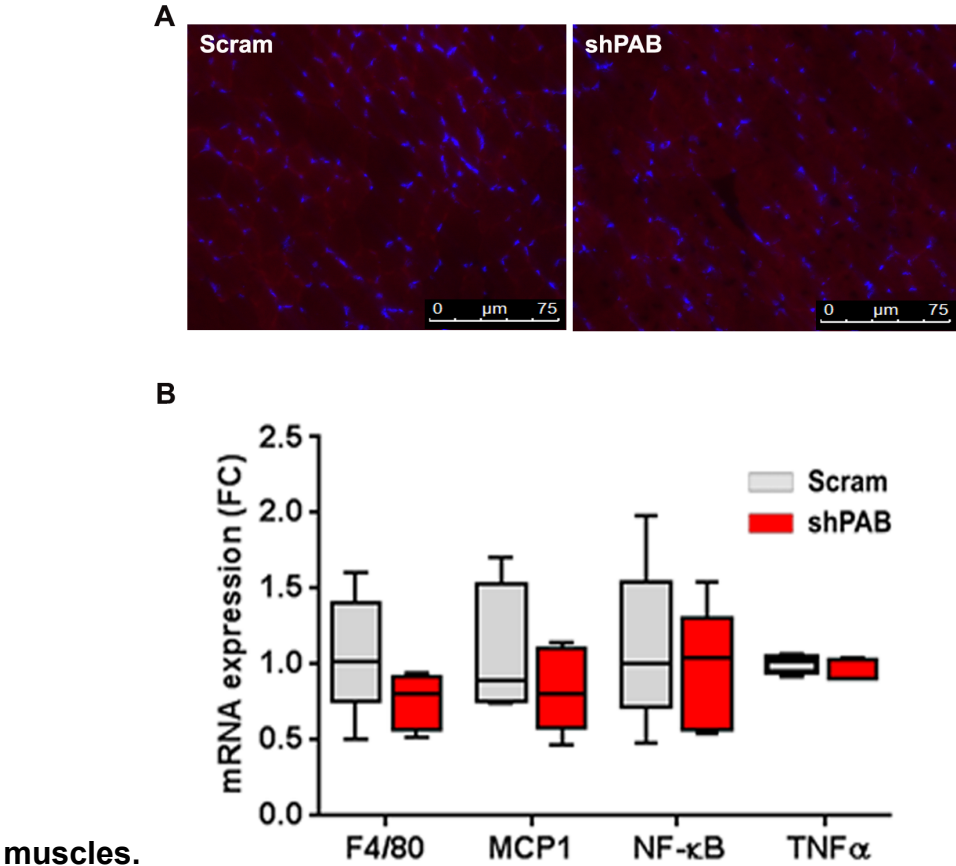


S4 Fig. Histological and molecular analyses of shPAB and Scram TA



A. Representative images of Nile-Red staining for fatty droplets. Nuclei are counterstained with DAPI. **B.** mRNA expression of four inflammatory genes. CT values are normalized to *Hprt* house-keeping gene and data is presented in fold-change after normalization to PBS injected TA muscles. Measurements are from five animals.