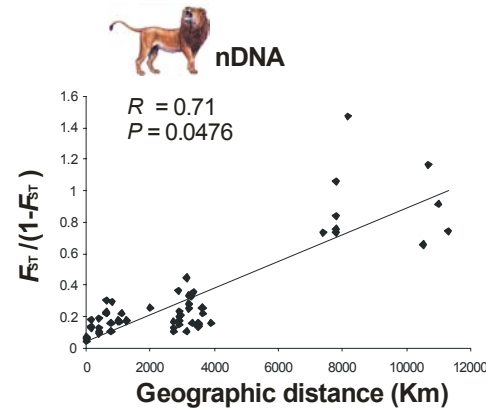


1-dimensional IBD



2-dimensional IBD

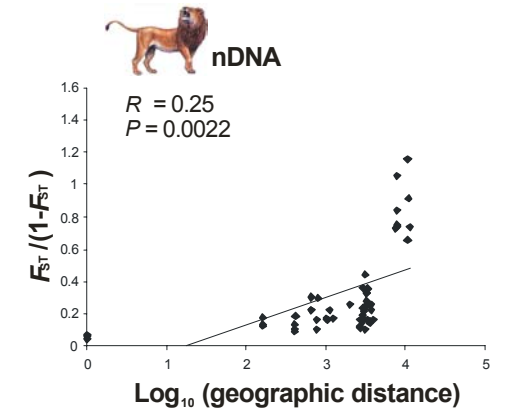


Figure S2. Linearized genetic differentiation of host and viral genetic markers with geographic distance. Regression of linearized F_{ST} estimates [24] for lion (nDNA and mtDNA) and FIV_{Plc} (*pol*-RT) genetic data plotted both against the geographic distance (model assuming habitat to be arrayed in an infinite one-dimensional lattice; one-dimension isolation-by-distance [IBD]) and the log geographic distance (model assuming an infinite two-dimensional lattice; two-dimension isolation-by-distance) on geographic distance.

