

S6 Fig

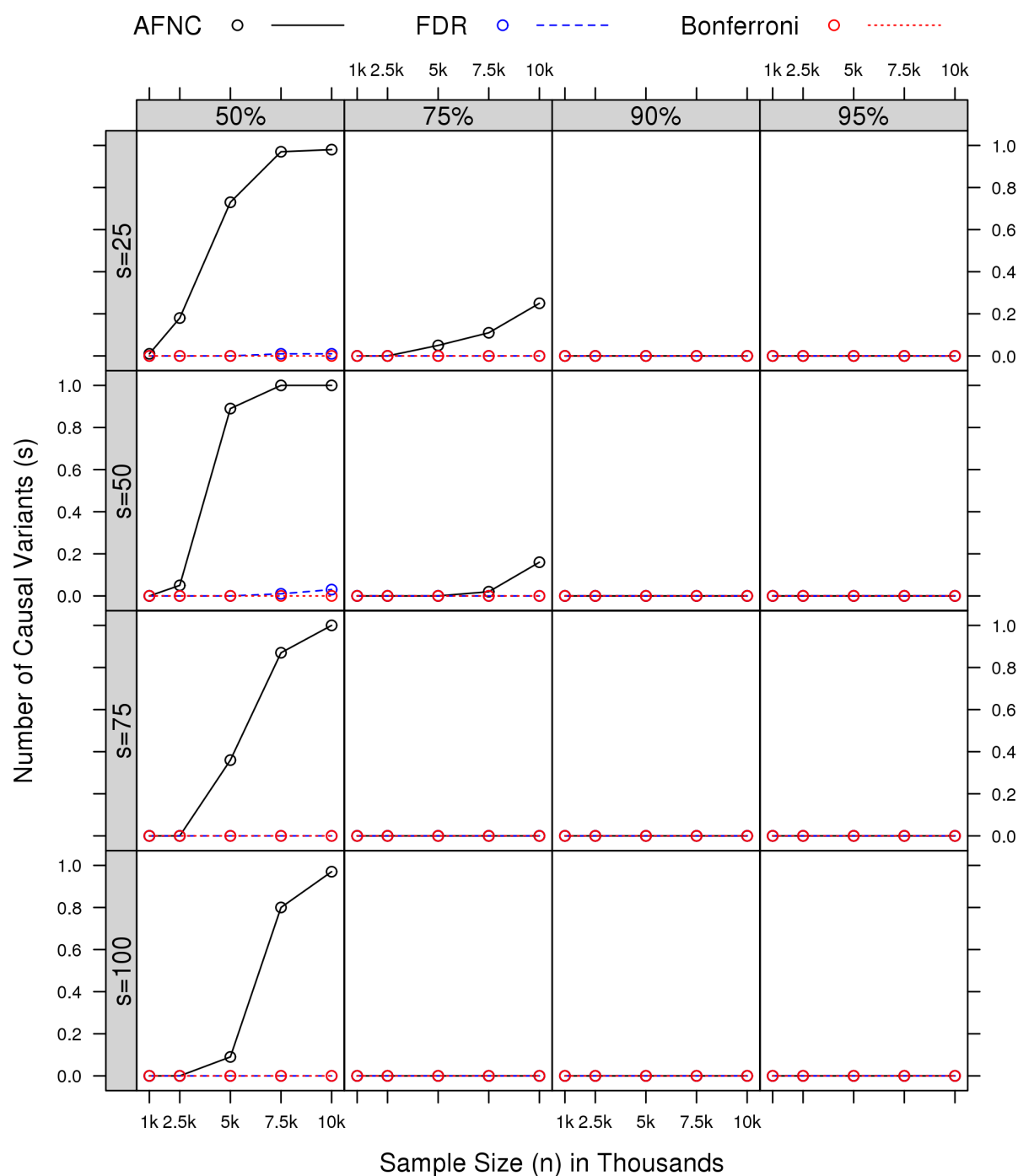


Figure S6: **Inclusion rate of causal variants across sample sizes and numbers of causal variants at  $C = 0.25$ .** Success rates of including at least 50%, 75%, 90%, and 95% of  $s$  variants are examined. Results are shown for the effect size multiplier  $C = 0.25$  and  $d = 100,000$  number of variants.