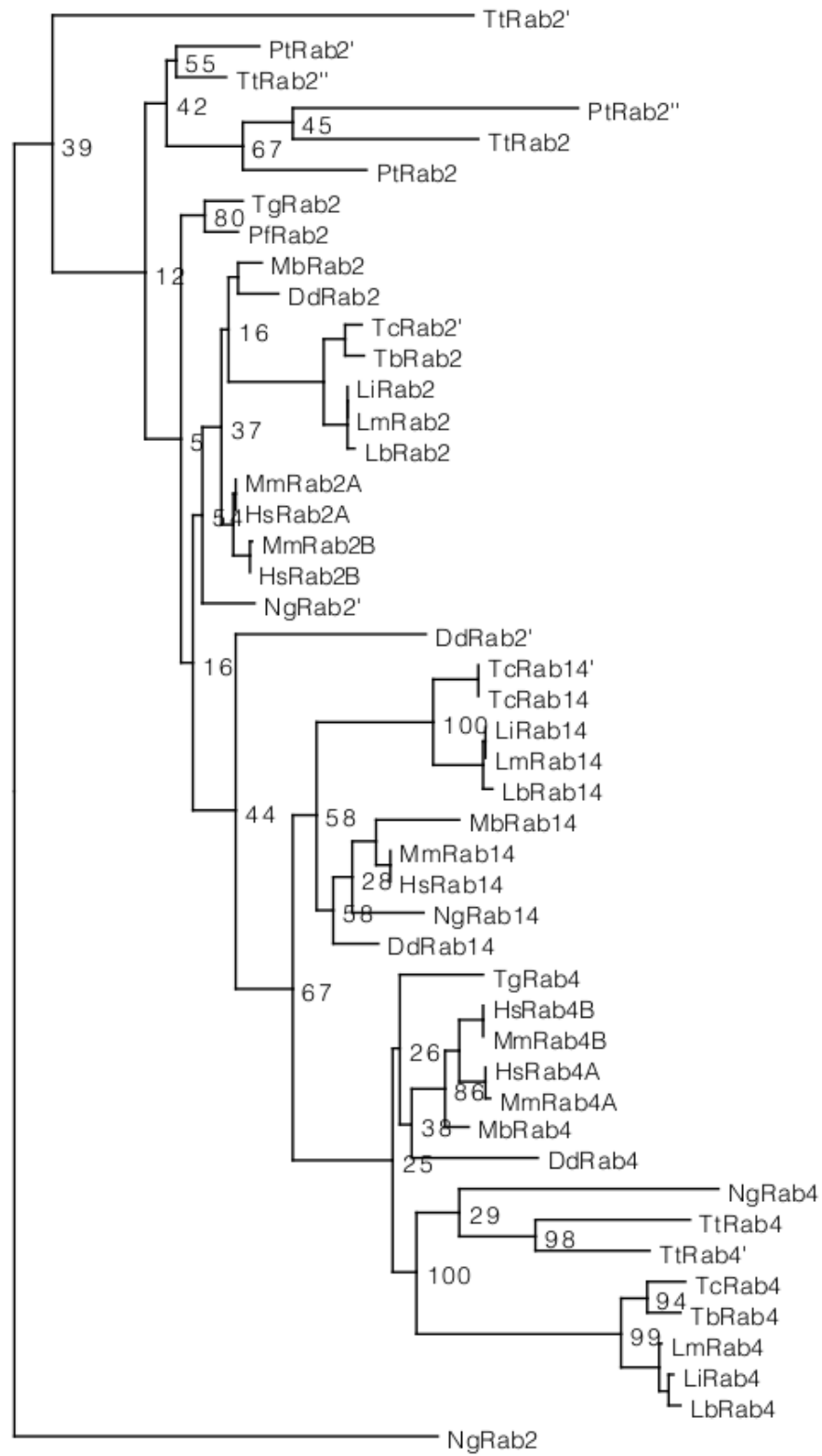
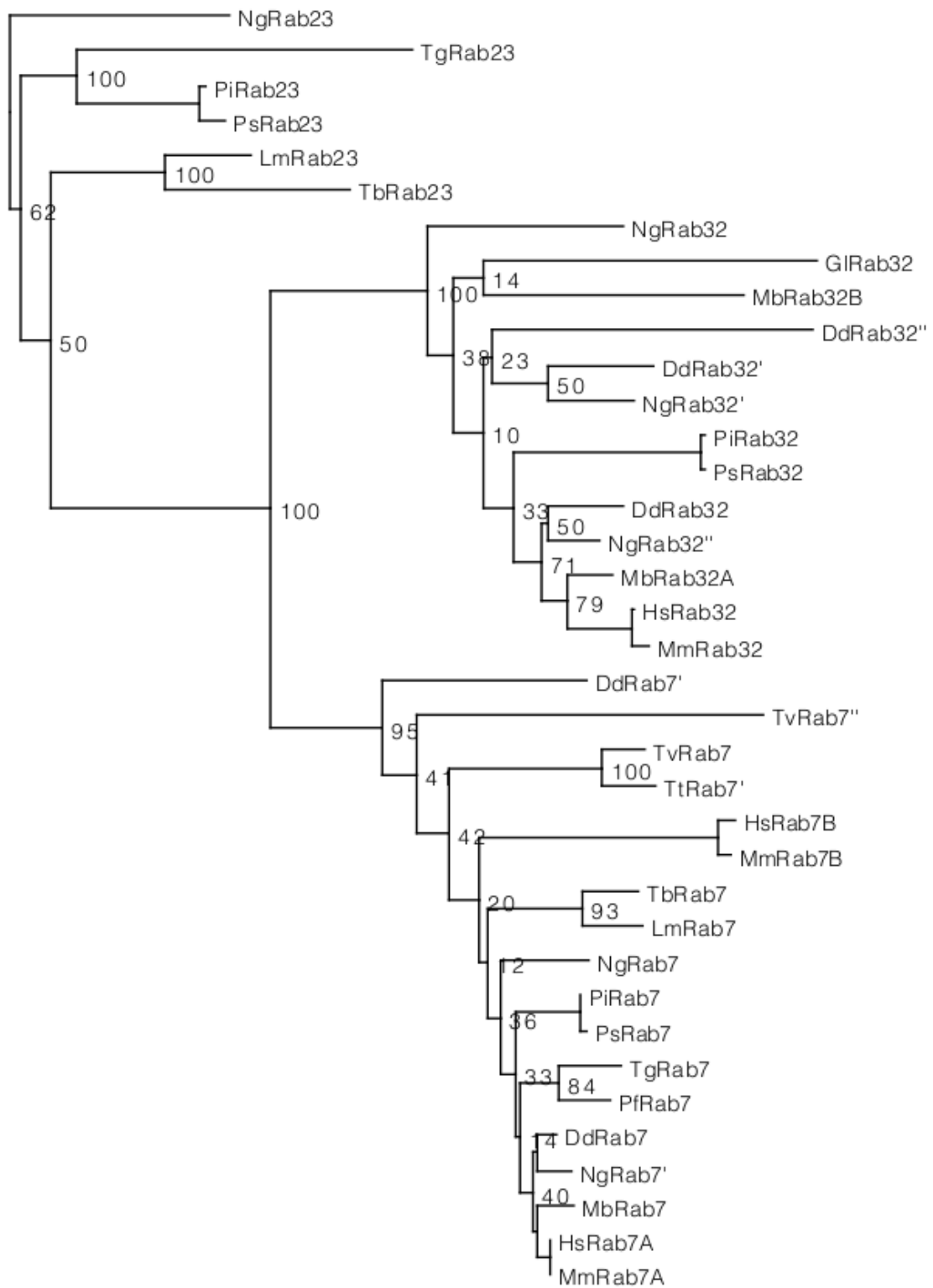


(A)



(B)



(C)

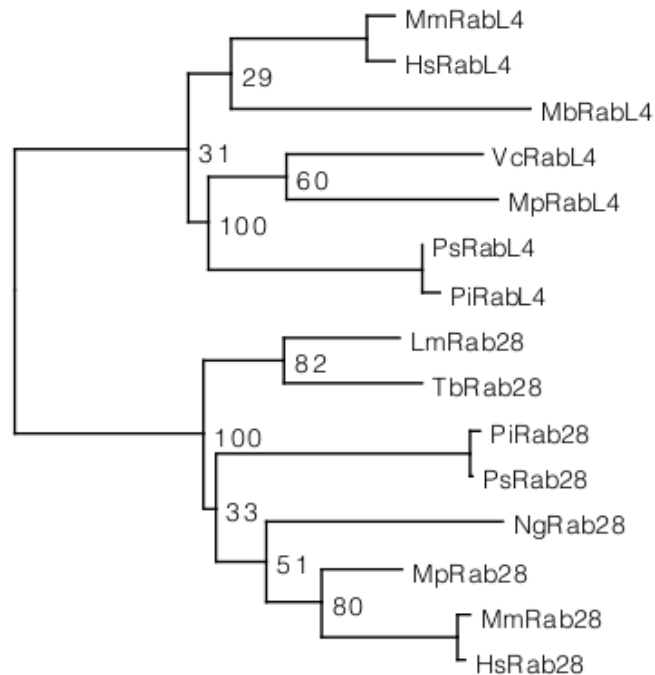


Figure S4. Phylogenetic trees of some Rab subfamilies. Panel (A) contains Rab subfamilies Rab14, 4, 2, panel (B) Rab32, 7, 23 and finally panel (C) RabL4, 28. Each of the trees covers different taxa. For information on how the trees have been generated check **Materials and Methods** in the main article. All sequence accessions are listed in **Table S2**. All representations have been generated with Dendroscope [1].

Abbreviations: *Homo sapiens* (Hs), *Mus musculus* (Mm), *Monosiga brevicollis* (Mb), *Naegleria Gruberi* (Ng), *Leishmania major* (Lm), *Leishmania braziliensis* (Lb), *Leishmania infantum* (Li), *Trypanosoma brucei* (Tb), *Trypanosoma cruzi* (Tc), *Plasmodium falciparum* (Pf), *Toxoplasma gondii* (Tg), *Tetrahymena thermophila* (Tt), *Paramecium tetraurelia* (Pt), *Giardia lamblia* (Gi), *Trichomonas vaginalis* (Tv), *Phytophthora infestans* (Pi), *Phytophthora sojae* (Ps), *Micromonas pusilla* (Mp), *Volvox carteri* (Vc)

References

1. Huson DH, Richter DC, Rausch C, DeZulian T, Franz M et al. (2007) Dendroscope: An interactive viewer for large phylogenetic trees. BMC Bioinformatics 8: 460.