

RESEARCH ARTICLE

miRAW: A deep learning-based approach to predict microRNA targets by analyzing whole microRNA transcripts

Albert Pla¹, Xiangfu Zhong^{1,2}, Simon Rayner^{1,2*}

1 Department of Medical Genetics, University of Oslo, Oslo, Norway, **2** Department of Medical Genetics, Oslo University Hospital, Oslo, Norway

* simon.rayner@medisin.uio.no



Abstract

MicroRNAs (miRNAs) are small non-coding RNAs that regulate gene expression by binding to partially complementary regions within the 3'UTR of their target genes. Computational methods play an important role in target prediction and assume that the miRNA “seed region” (nt 2 to 8) is required for functional targeting, but typically only identify ~80% of known bindings. Recent studies have highlighted a role for the entire miRNA, suggesting that a more flexible methodology is needed. We present a novel approach for miRNA target prediction based on Deep Learning (DL) which, rather than incorporating any knowledge (such as seed regions), investigates the entire miRNA and 3' TR mRNA nucleotides to learn a uninhibited set of feature descriptors related to the targeting process. We collected more than 150,000 experimentally validated homo sapiens miRNA:gene targets and cross referenced them with different CLIP-Seq, CLASH and iPAR-CLIP datasets to obtain ~20,000 validated miRNA:gene exact target sites. Using this data, we implemented and trained a deep neural network—composed of autoencoders and a feed-forward network—able to automatically learn features describing miRNA-mRNA interactions and assess functionality. Predictions were then refined using information such as site location or site accessibility energy. In a comparison using independent datasets, our DL approach consistently outperformed existing prediction methods, recognizing the seed region as a common feature in the targeting process, but also identifying the role of pairings outside this region. Thermodynamic analysis also suggests that site accessibility plays a role in targeting but that it cannot be used as a sole indicator for functionality. Data and source code available at: <https://bitbucket.org/account/user/bipous/projects/MIRAW>.

OPEN ACCESS

Citation: Pla A, Zhong X, Rayner S (2018) miRAW: A deep learning-based approach to predict microRNA targets by analyzing whole microRNA transcripts. *PLoS Comput Biol* 14(7): e1006185. <https://doi.org/10.1371/journal.pcbi.1006185>

Editor: Ilya Ioshikhes, Ottawa University, CANADA

Received: November 16, 2017

Accepted: May 8, 2018

Published: July 13, 2018

Copyright: © 2018 Pla et al. This is an open access article distributed under the terms of the [Creative Commons Attribution License](https://creativecommons.org/licenses/by/4.0/), which permits unrestricted use, distribution, and reproduction in any medium, provided the original author and source are credited.

Data Availability Statement: All the relevant data and code used in the project can be accessed at the software repository: <https://bitbucket.org/account/user/bipous/projects/MIRAW>.

Funding: Albert Pla received funding from the European Union Seventh Framework Program (FP7-PEOPLE-2013-COFUND) under grant agreement 609020 - Scientia Fellows. Albert Pla also was awarded with an NVIDIA GPU provided by the NVIDIA GPU grant program. Xiangfu Zhong received funding from the Helse Sør Øst project 2016122. The funders had no role in study design,

Author summary

microRNAs are small RNA molecules that regulate biological processes by binding to the 3'UTR of a gene and their dysregulation is associated with several diseases. Computationally predicting these targets remains a challenge as they only partially match their target and so there can be hundreds of targets for a single microRNA. Current tools assume that

data collection and analysis, decision to publish, or preparation of the manuscript.

Competing interests: The authors have declared that no competing interests exist.

most of the knowledge defining a microRNA-gene interaction can be captured by analyzing the binding produced in the seed region (~ the first 8nt in the miRNA). However, recent studies show that the whole microRNA can be important and form non-canonical targets. Here, we use a target prediction methodology that relies on deep neural networks to automatically learn the relevant features describing microRNA-gene interactions for predicting microRNA targets. This means we make no assumptions about what is important, leaving the task to the deep neural network. A key part of the work is obtaining a suitable dataset. Thus, we collected and curated more than 150,000 experimentally verified microRNA targets and used them to train the network. Using this approach, we are able to gain a better understanding of non-canonical targets and to improve the accuracy of state-of-the-art prediction tools.

This is a *PLoS Computational Biology* Methods paper.

Introduction

MicroRNAs (miRNAs) are a family of ~22-nucleotide (nt) small RNAs that regulate gene expression at the post-transcriptional level. They act by binding to partially complementary sites on target genes to induce cleavage or repression of productive translation, preventing the target gene from producing functional peptides and proteins. Despite advances in understanding miRNA:mRNA interactions, the rules that govern their targeting process are not fully understood [1–4].

While many miRNA targets have been computationally predicted only a limited number have been experimentally validated. Moreover, although a variety of miRNA target prediction algorithms are implemented, results amongst them are generally inconsistent and correctly identifying functional miRNA targets remains a challenging task. The majority of prediction tools are based on the assumption that it is the miRNA seed region—generally defined as a 6 to 8 nucleotide sequence starting at the first or second nucleotide—that contains almost all the important interactions between a miRNA and its target and their focus is on these canonical sites. This seed-centric view has been supported by structural studies [5] and a widely cited report [6] that investigated the importance of other (non-canonical) regions within a miRNA and concluded their contributions had relatively low relevance compared to the (canonical) seed region. However, more recent studies have revealed that many relevant targets are implemented via non-canonical binding and involve nucleotides outside the seed region, indicating that the entire miRNA should be considered in target prediction algorithms [3, 7, 8]. This is also supported by the performance of target prediction tools which typically identify approximately 80% of known miRNA targets, indicating the mechanisms associated with the remaining 20% of non-canonical targets remain poorly understood. Thus, there is an opportunity for novel approaches to improve knowledge of miRNA-regulated processes. In turn, this can lead to better understanding the effects of mutations in the non-coding region of the genome in terms of function and disease. To this end, in this work, we apply deep learning techniques to investigate the role of non-canonical sites and pairing beyond the canonical seed region in microRNA targets.

Almost all target prediction methods are rule-based or adopt machine learning (ML) methodology with varying success. Rule-based systems incorporate various human-crafted descriptors to represent miRNA:gene target binding (e.g. type of pairs in the site, binding stability, or conservation of the target site among species). Machine learning techniques also use human-crafted descriptors, but as input features to machine learning models. The limitation of both these approaches is the process of feature selection and representation, which is constrained by the use of handcrafted descriptors to model a process that is not fully understood.

Recent increases in computational power have permitted the rise of methods that can dispense with human-crafted features; making it possible to deal directly with raw data and autonomously learn and identify patterns to appropriately represent data. In particular, deep learning (DL) [9] has been shown to be an effective method for classification tasks in domains with complex feature representation. Generally, DL methods represent raw data by incorporating multiple hierarchical levels of abstraction. While this approach is typically applied to standard ML problems such as image classification [10], natural language processing [11] or speech recognition [12], it is now finding use in the life sciences for applications such as RNA splicing prediction [13] and gene expression inference [14, 15]. DL has also been applied to the miRNA target prediction problem. Cheng et al. [16] used convolutional neural networks to analyze matrices of miRNA:site features, but the selected features were still human-crafted descriptors and thus the method faces similar problems as rule-based and ML approaches. A more recent work, DeepTarget [17], relied on recurrent neural networks to identify potential binding sites and assess their functionality. However this work is still oriented to the identification of canonical sites and relies on a limited small data set for the training phase.

In this paper we present miRAW, a novel miRNA target prediction tool that works with raw input data and which makes no assumptions about suitable input descriptors. miRAW scans the 3'UTR of the gene to identify potential target sites. It then uses DL to identify relevant patterns by directly analyzing the whole mature miRNA transcript, rather than focusing on the seed region and analyzing precomputed descriptors. It is trained and tested against experimentally verified positive and negative datasets. The resulting predictions can then be refined by incorporating exogenous information. When compared to other state-of-the-art miRNA target prediction tools, miRAW demonstrates a significant improvement in performance, highlighting the importance of considering pairing beyond the seed region. In order to gain a deeper understanding of the characteristics of non-canonical targets, we also investigated the prediction results in terms of model design (i.e., how different configurations affect the type of predictions obtained) and from a biological perspective (i.e., how different classes of predicted target sites varied in terms thermodynamic stability and binding structures). In particular, results reveal (i) many potential functional non-canonical binding structures that are supported by experimentally verified miRNA:mRNA target data and (ii) commonly prioritized features such as site accessibility energy and seed region structure are relevant but not sufficient for discerning between functional and non-functional target sites.

Materials and methods

In our approach, we sought to minimize the introduction of potential biases in the data representation by working directly with the raw data—i.e., the miRNA and mRNA transcripts—rather than incorporating any human selected feature descriptors. To this end we applied deep artificial neural networks (ANN) theory, taking advantage of two of their fundamental properties: (i) with sufficient data-samples and an adequate number of nodes and hidden layers, an ANN can approximate any mathematical function [18]; and (ii) an ANN has the capacity to automatically learn the relevant features of complex data structures by means of its hidden

layers [19]. In the following text, we refer to a target site within the 3'UTR of a gene as a miRNA binding site (MBS), comprising the set of sites where partially complementary nucleotides individually form bonds between the miRNA and the target mRNA.

The miRAW pipeline (Fig 1) for investigating the target potential of a miRNA and the 3'UTR of a query gene can be summarized as follows: A 30nt sliding window with a 5nt step is used to scan the 3'UTR of a gene. For each 30nt fragment, miRAW predicts the stability of the binding between the miRNA and the fragment. If the structure is sufficiently stable, miRAW examines the secondary structure to see whether the extended seed region meets the criteria defined in the candidate site selection method (CSSM). If the criteria are met, the sequence of

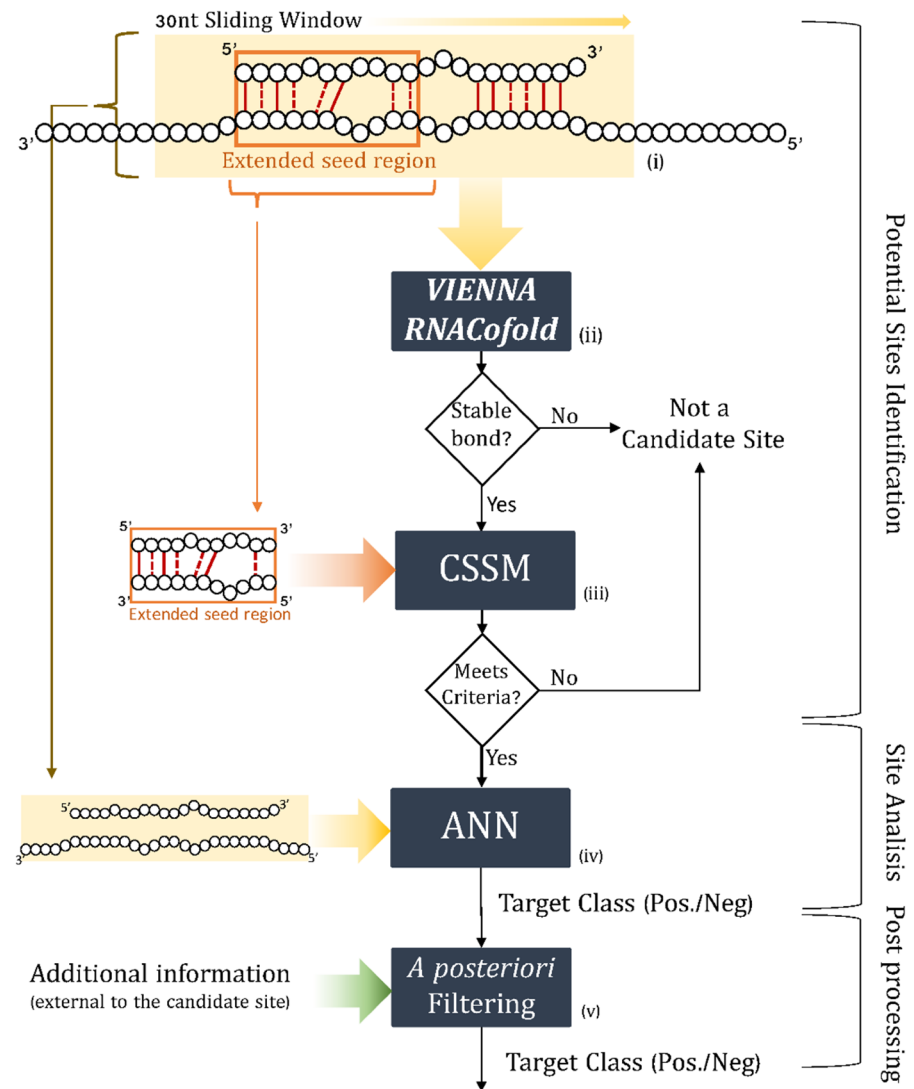


Fig 1. Schematic of the process used by miRAW to evaluate a miRNA binding site. (i) A 30nt sliding window (with 5nt step) is used to scan the 3'UTR of a gene; (ii) The Vienna RNACofold software package is used to estimate whether the microRNA and the 30nt transcript can form a stable bond; (iii) If a stable bond is predicted, miRAW checks if the extended seed region meets the criteria defined in the candidate site selection method (CSSM); (iv) If the criteria are met, the full mature microRNA transcript and 30nt corresponding to the candidate site are fed into miRAW's neural network to generate a classification; (v) The prediction can be refined by a filtering step that applies additional information that is external to the miRNA:site duplex.

<https://doi.org/10.1371/journal.pcbi.1006185.g001>

the entire mature miRNA and the 30nt fragment are binarized and fed into network to generate a classification. The prediction can be further refined by including one or more filtering steps that apply additional information that is external to the miRNA:site duplex.

Dataset preparation

A key factor for successful application of any ML classification technique is access to a sufficiently variable and representative dataset that will generalize a trained model to new and unseen data. For the miRNA target prediction problem, this requires a comprehensive dataset of verified positive and negative targets that encompass both canonical and non-canonical examples. While there are multiple data repositories providing information regarding experimentally validated positive miRNA targets [20–22], there are significantly fewer experimentally verified negative targets. This is not an issue for methods that use rule-based approaches to describe positive matches [6], but it represents a major concern for ML-based approaches that require similar numbers of labeled examples for both classes.

Here, we focused on human data and used (i) Diana TarBase [21]—the most comprehensive publicly available dataset, which contains information for both positive (121,090) and negative (2,940) experimentally verified human miRNA:mRNA interactions—and (ii) MirTarBase [20]—containing 410,000 experimentally verified positive targets—as the knowledge core for our study. Annotation related to transcripts and miRNA binding site locations were obtained by cross-referencing Diana TarBase identifiers with miRBase release 21 [23] and Ensembl release 87 [24] entries. As a preliminary step, the Diana and MirTarBase data were parsed to (i) remove inconsistent entries that were marked both as positive and negative targets—due to contradictory results in different experimental validations—and (ii) combine entries that were validated more than once by different verification methods. This produced a final dataset of 303,912 positive (+) and 1,096 negative (-) miRNA:mRNA interactions. The data was then split into two parts (each consisting of 151,956+ and 548- interactions) for the training and testing stages (see Fig A in S1 and S2 Files).

Training dataset. The training dataset serves the purpose of training and validating the ANN responsible for classifying miRNA target sites between functional (positive targets) and non-functional (negative targets). Thus, the training dataset is composed of miRNA:MBS pairs rather than miRNA:mRNA pairs.

- **Positive Training Dataset** To build the positive training dataset we used the reference transcripts of the mature miRNAs and the target mRNAs and, where possible, the binding sites of the experimentally verified targets. However, binding site information is only available and/or parsable for a limited number of Diana Tarbase's targets. Thus, in order to obtain specific information regarding binding site locations for the remaining target entries, we cross-referenced Diana Tarbase and TarBase with publicly available datasets containing miRNA:MBS locations obtained through PAR-Clip [2] and CLASH [25] experiments. While CLIP and CLASH data provides information regarding experimentally identified miRNA binding site locations, these sites are not necessarily functional. In order to reduce the probability of including non-functional sites in the positive training dataset we considered MBSs that (i) formed stable duplexes –negative free energy in the predicted secondary structure—according to Vienna RNACofold [26] and (ii) corresponded to a miRNA:gene pair marked as functional in mirTarBase or Diana TarBase.

Additionally, we complemented our positive training dataset by including the most probable broadly conserved sites obtained from TargetScanHuman 7.1 [6] that matched experimentally validated functional data from Diana Tarbase or mirTarBase. The resulting dataset was

composed of both canonical and non-canonical MBSs and comprised a total of 33,142 positive target sites for training and validating the miRAW deep learning network.

- Negative Training Dataset** The smaller number of negative experimentally validated targets poses a challenge when constructing a representative negative dataset. Some ML-based target prediction tools address this problem by using “mock” miRNA targets which are artificially generated miRNA:MBS sequences that resemble true positive targets but which do not appear in positive miRNA target repositories [17, 27]. However, in our case, this type of strategy can lead to the ANN learning the function used to generate the “mock” data and being trained to discriminate between real data and artificial data rather than discriminating functional and non-functional targets. In addition, there is no guarantee that the generated sequences do not belong to miRNA:gene functional pairs yet to be discovered or validated. Thus, we opted for building a negative dataset based upon experimentally verified data. Any sequence of approximately 22 nt within a mRNA of a negatively validated miRNA:mRNA pair represents a possible negative MBS. However, in practice, most of these sequences are irrelevant as they cannot form a stable bond with a miRNA and including them in the training set would merely introduce noise, unnecessarily increasing the complexity of the problem. To obviate this issue, we only considered negative sites within the 3' UTR of a mRNA that (i) comprise a region with a maximum length of 30 nucleotides and (ii) where a miRNA has the potential to form a stable bond (The choice of a binding site length greater than the average length of an mRNA allows the presence of bulges within the MBS). For each experimentally verified negative miRNA:mRNA pair, we used a sliding window of 30 nt along the entire 3'UTR region. The secondary structure of the *miRNA:MBS* duplex was then predicted using the RNACoFold tool from the ViennaRNA package [26] using default settings for all parameters and was considered to be a potential MBS if it had a negative binding energy. This process resulted in a total of 32,284 negatively validated target sites.

For training and validating the neural network, we followed a 10 fold random-subsampling cross-validation approach using the positive and negative training datasets. For the training folds, we stratified the sampling process to ensure the presence of both positive and negative samples for each miRNA family (miRNAs sharing a common ancestor and which have similar similar sequence and structure [23, 28]); this prevents the network making predictions based solely on the presence of a miRNA in only one of the classes and not using the whole set of inputs. For the generation of validation and testing datasets we excluded those miRNA:MBS pairs that shared miRNA and MBS with data instances in the training data; this ensures that there is no overlap of miRNA families between testing and training, forcing the evaluation of new data in the testing stage. 66.67% percent of data was used for training, 33.33% for testing and validation. For each fold we used the same proportion of positive and negative class instances.

Test dataset. To evaluate our methodology with independent data we generated two different test datasets: one using the ~17000 experimentally verified miRNA:gene targets excluded from the training data (**TarBase test dataset**); and one using results of independent microarray datasets reporting mRNA changes after transfecting a miRNA into HeLa cells [29] (**Transfection Test Dataset**). Note that, in contrast to the training stage, the goal of the test dataset is to evaluate the whole miRAW methodology and, therefore, the testing data consist of pairs containing the miRNA and the whole gene 3'UTR transcripts, rather than the specific MBSs.

The 17000 data points from the **TarBase test dataset** were highly biased towards positive entries in a ratio of 97:3; this imbalance will impede true evaluation of the trained model—a

tool that exclusively predicts positive targets against the full test data would achieve an accuracy of 97%. Thus, besides the full test dataset, additional datasets were generated with equal numbers of positive and negative targets (548+, 548-) where positive entries were randomly selected. To avoid bias attributable to positive target selection, different randomly sampled datasets were generated and compared (10 folds and 100 folds).

The **Transfection Test Dataset** was obtained from [29], which provides a collection of 175 published microarray datasets that monitored the mRNA expression response of transfecting miRNAs or siRNAs (sRNAs) into HeLa cells. We compared the sRNAs used in these experiments with their miRbase 21 annotation and selected those annotated as high confident miRNAs (GSE8501-GSM210898: hsa-miR-9-5p, GSE8501-GSM210913: hsa-miR-181a-5p, GSE8501-GSM210911: hsa-miR-148b-3p, GSE8501-GSM210909: hsa-miR-142-3p, GSE8501-GSM210904: hsa-miR-132-3p). This makes it more plausible to relate the changes in expression levels observed within each of the microarray datasets to the targets predicted by the various target prediction tools that were selected for comparison. In the original paper associated with the data, Garcia et Al. acknowledge that expression variability might come from additional factors unrelated to targeting such as array noise, differential transfection efficiencies, or differential sRNA loading or stability. In a subsequent study, Agarwal et Al. [6] attempted to normalize and standardize datasets to address these issues as well as other phenomena such as batch effects. Here, as all the selected datasets originated from the same series [30] we used the original Garcia mRNA expression profiles.

Candidate site selection

Selection of candidate MBSs in a mRNA is another key step for a miRNA target prediction algorithm as it identifies which regions within a mRNA have the potential to be a target binding site. Most target prediction methods follow a similar approach for candidate selection: they scan the 3'UTR of the gene looking for sites that are partially complementary to the miRNA transcript; if a site fulfills certain criteria, it is considered to be a candidate site and is subjected to further analysis. Candidate site selection methods (CSSMs) that focus on the retrieval of canonical targets only consider those sites that have perfect complementarity within the miRNA seed region (nucleotides 2 to 8, see Fig 2a) and will return the smallest number of predicted targets. Methods willing to accept non-canonical sites have looser restrictions: some accept a limited number of bulges, mismatches or wobble pairs in the seed region whilst others accept such mismatches only if there are compensatory nucleotide pairs outside the seed region (Fig 2b and 2c).

In an ideal scenario where the training dataset contained sufficient examples of all the possible forms of positive and negative targets, the CSSM would not be required as, theoretically, an ANN would be able to estimate the function acting as CSSM. In reality, there are limited numbers of reliable experimentally verified miRNA:targets (especially for negatively validated sites) and the CSSM step effectively narrows the search space to simplify the ANN classification task.

The CSSM used by miRAW (CSS miRAW) for searching the 3'UTR follows a similar approach to other prediction tools –investigating successive 30-mer segments– but employs a more relaxed set of restrictions that reflect recent experimental studies that relax the requirement of perfect pairing in the seed region and acknowledge a possible role for the other nucleotides. For example, Kim et al [8] report the role of nucleotide 9 in several miRNA binding sites and Grosswendt et al [2] found that a significant number of miRNAs do not require perfect complementarity within the seed region and compensate for this in non-seed nucleotides. Finally, a recent structural study by Klum et al [31] clarify a role for the 3' end of the miRNA in the targeting process. Based on the findings from these and other related studies, we

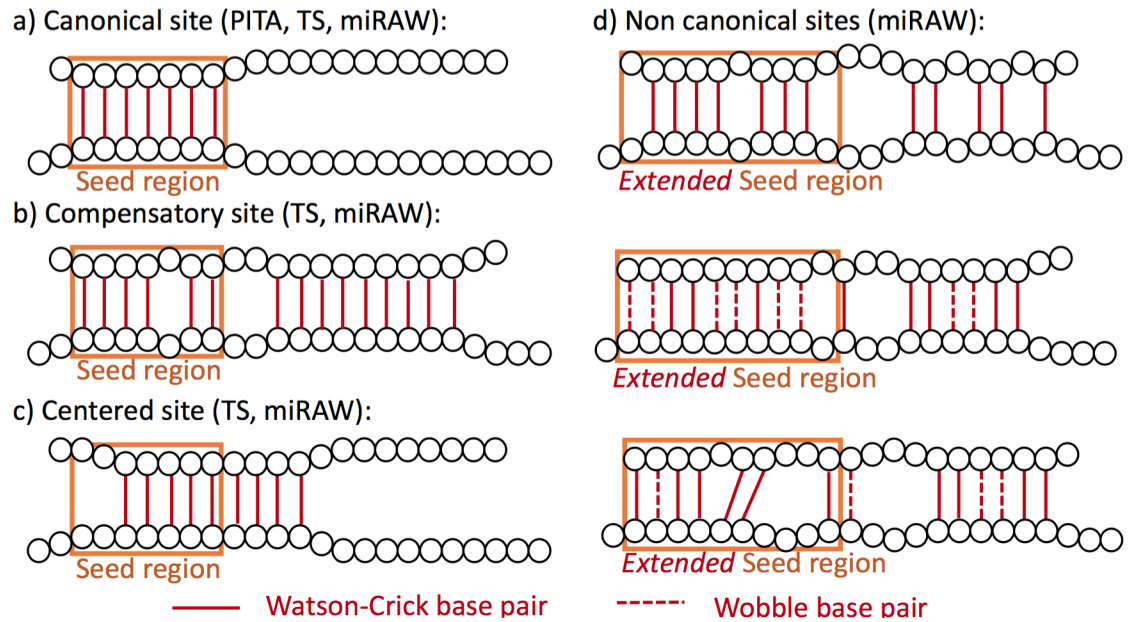


Fig 2. Examples of the types of miRNA binding sites considered by different candidate site selection methods (CSSMs). (a) Potential canonical binding site accepted by the PITA, TargetScan (TS), and miRAW CSSMs. Here, the seed region contains a perfect 7mer. (b) Potential non-canonical compensatory binding site accepted by TS and miRAW CSSMs. The missing nucleotide pair in the seed region is compensated by the 9 consecutive pairs starting at position 10—centered pairing requires at least a 4mer at positions 10 to 14. (c) Potential non-canonical centered target site accepted by TS and miRAW CSSMs. The lack of perfect seed matching is compensated by additional consecutive pairs in nucleotides 9 to 12. (d) Potential non-canonical sites accepted only by the miRAW CSSMs. The extended seed region (10 nucleotides) and the inclusion of wobbles allows these scenarios to be considered as potential target sites.

<https://doi.org/10.1371/journal.pcbi.1006185.g002>

investigated three different approaches that expand the analysis beyond the typical 7mer seed region and relax the broadly adopted requirement for perfect pairing within the seed region.

In particular, we consider a site to be a candidate MBS if there is a minimum number of base pairs—considering both Watson-Crick (WC) pairing and wobbles—within an extended seed region and investigated three different configurations:

- **CSS miRAW-6-1:10:** a candidate MBS contains at least 6 base pairs between nucleotides 1 and 10.
- **CSS miRAW-7-1:10:** a candidate MBS contains at least 7 base pairs between nucleotides 1 and 10.
- **CSS miRAW-7-2:10:** a candidate MBS contains at least 7 base pairs between nucleotides 2 and 10.

In each case, base pairs do not need to be consecutive in order to accommodate the presence of gaps and bulges.

Thus, these models can accommodate both standard canonical MBSs as well as a broader range of non-canonical target site structures (see Fig 2), including the vast majority (up to 97.63%) of experimentally validated sites from Diana TarBase and CLIP/CLASH binding site datasets. Moreover, while these relaxed conditions for the seed region generate a much larger number of candidate sites, the decision of whether a site represents a functional target is delegated to the ANN (which considers the entire miRNA & mRNA sequence). In this way, we ensure that minimal assumptions, and hence bias, are incorporated into the analysis.

To further evaluate the impact of choice of CSSM, we also implemented the CSSMs used in two of the most commonly used miRNA target prediction tools:

- **TargetScan (CSS miRAW-TS)** considers three types of sites: (i) perfect canonical matches (perfect complementarity in nt 2 to 8, Fig 2a), (ii) 3' compensatory sites (a minimum of 3 consecutive WC pairs between nt 13 and 16 compensates an imperfect seed match—one wobble, bulge or mismatch—, Fig 2b) and (iii) centered sites (imperfect seed match but 11 contiguous WC pairs between nt 4 and 15, Fig 2c).
- **PITA (CSS miRAW-Pita)** considers (i) 7mers starting at nt 1 or 2 (Fig 2a) and (ii) sites containing a gap, wobble or mismatch in the seed region (starting at nt 1) if it contains at least 7 WC pairs.

Both these CSSMs are subsets of CSSM-miRAW-6-1:10 and CSSM-miRAW-7-1:10 (Fig 2).

Implementation of different CSSMs served the primary purpose of fine-tuning miRAW but also allowed us to investigate the targeting process from a biological perspective. The 5 proposed methods encapsulate different target ranges. At one extreme, CSS-miRAW-TS and CSS-miRAW-P adopt conservative approaches oriented towards canonical sites but they also consider a limited number of non-canonical sites with small irregularities in the seed region; at the other extreme, the other non-canonical CSSMs follow a greedier approach that allows the consideration of several non-canonical sites with broader irregularities in the seed region. These differences produce variations in both the canonical and non-canonical predicted targets.

Transcript binarization

As an ANN requires numerical data for input, we transformed the miRNA and candidate mRNA site transcripts to binary values using *one hot encoding*. Each of the mRNA and miRNA nucleotides was translated to a binary vector of dimension 4, corresponding to the four possible nucleotide values (see Table 1). Thus, each miRNA target is represented by two concatenated binary vectors: one composed of dimension 120 (4x30nt, where 30nt accommodates the longest known miRNA) corresponding to the mature miRNA transcript, and a second composed of dimension 160 (4x40nt) corresponding to the mRNA site (30 nt) and 5 additional upstream and downstream nucleotides. These additional nucleotides seek to capture any influence that the flanking sequence may exert on the target [32, 33]. The optimal number of additional upstream/downstream nucleotides was determined by evaluating how it affected the predictive power of the neural network (see Fig B in S1 File). The number of additional nucleotides also conditions the window step size used when scanning the 3'UTR—a smaller window would result in a redundant analysis of potential sites by the neural network whilst a larger step would result in unscanned regions within the 3'UTR.

Neural network design

Classification of candidate miRNA:MBSs was performed using a feed forward deep ANN. As we rely on the network to identify the relevant relationships between a sequence and the

Table 1. Binarized nucleotide encoding.

Nucleotide	Binarization			
A	0	0	0	1
C	0	0	1	0
G	0	1	0	0
U	1	0	0	0
Empty	0	0	0	0

<https://doi.org/10.1371/journal.pcbi.1006185.t001>

features that describe the miRNA:mRNA interaction, the input of the network consisted of the binarized transcripts of the miRNA and the MBS. The network was configured so that the number of inputs in the input layer was equal to the dimensionality of the binarized representation of the miRNA:mRNA transcripts, and the output layer consisted of two outputs (positive and negative class classification). In addition, transcripts were aligned so the start of the seed region corresponded always to the same input node.

The deep ANN was composed of eight dense hidden layers (comprising rectifier activation function –ReLU– nodes) whilst the output layer comprised two softmax output nodes. The shape of the network was consistent with its intended functionality: (i) the first hidden sparse layer increases the dimensionality of the problem allowing the representation of data in a more complex dimension (over-completion); this layer does not necessarily improve the efficiency of the network autoencoder but it gives it “room” to explore the search space. (ii) Hidden layers one to five aim to identify the relevant features representing the data; they correspond to the first half of a stacked autoencoder. These layers were pre-trained as an isolated autoencoder in order to learn the features that are most representative of miRNA:MBS duplexes. (iii) the last three layers are responsible for classifying the features learned by the autoencoder; and follow the typical shape of a feedforward classification network.

The number of nodes per layer was chosen experimentally using the guidelines in [34] as a starting point and resulted in the structure shown in Fig C and Fig D in S1 File. The size of the autoencoder was determined by minimizing the number of layers required to compress the data without losing important information (*relative error* < 0.05); i.e., a smaller network may struggle to capture important information whereas a larger one may require additional training time and would have higher overfitting risk.

To ensure the network’s capacity to deal with newly observed data and to avoid overfitting, training was performed with a dropout rate of 0.2. The maximum number of epochs was set to 500 in order to prevent excessive training time and overfitting. We tested two different loss functions for the network: *negative log likelihood* (NLL) and *cross entropy* (XENT). After performing cross-validation, and determining the best model configuration (see “Results:Neural Network Evaluation”) we generated miRAW’s ANN model by retraining the network using the complete training dataset (with the same proportion of positive and negative class instances).

The two neurons of the output layer correspond to the negative (output 0, o_0) and positive (output 1, o_1) classes. Therefore, the class of the site is determined by the values of the two output neurons:

$$class = \begin{cases} 1 & \text{if } o_1 - o_0 > 0 \\ -1 & \text{if } o_1 - o_0 \leq 0 \end{cases} \quad (1)$$

This method will assign a positive or negative classification even if there is only a small difference between the positive and negative output neurons. This scenario corresponds to situations where the network is not confident about the classification of the input data. To deal with such uncertainty a constant parameter K was used to define a ‘grey area’ in which the network is not able to provide a reliable prediction:

$$class = \begin{cases} 1 & \text{if } o_1 - o_0 \geq K \\ -1 & \text{if } o_1 - o_0 \leq -K \\ unknown & \text{if } -K < o_1 - o_0 < K \end{cases} \quad (2)$$

Gene prediction and filtering

According to [35], we consider that a miRNA targets an mRNA if any of the potential MBSs of the mRNA are functional. In the representation of the targeting process implemented within miRAW, we require the neural network classify at least one candidate site as positive to consider a miRNA:mRNA pair as a positive targeting event.

In our model, given a miRNA m and a gene g , a candidate site selection method $sm(m, g)$ determines a set of potential MBSs for that pair, i.e.

$$sm(m, g) = CS \tag{3}$$

$$CS = \{cs_0 \dots cs_i\} \tag{4}$$

To determine if the miRNA is targeting the gene, each candidate site within the miRNA:mRNA segment is binarized and input to miRAW's deep ANN. The result of the targeting prediction $T(m, g)$ corresponds to the disjunction of the neural network outputs ($ann(m, cs_i)$) for all the candidate sites $cs_i \in CS$ in the gene g .

$$T(m, g) = \bigvee_{i=0}^{|CS|} ann(m, cs_i) \tag{5}$$

The fact that it only requires a single candidate site to be classified as positive for the miRNA:mRNA prediction to be positive implies that miRAW is particularly sensitive to false positives. A false negative for a single candidate site can be abrogated by a positive classification for any of the remaining candidate sites but a single false positive cannot be corrected by any number of negative candidate sites. Hence, the more potential sites a CSSM identifies, the higher the probability of obtaining a false-positive prediction, reducing the performance of the classification due to a lower precision.

$$P(FP_{CSSM}) = 1 - P(!FP_{CSSM}) = 1 - (1 - FDR)^{|CS|} \tag{6}$$

$$P(FP_{CSSM}) = 1 - precision^{|sites|}$$

where FDR corresponds to the false discovery rate of the neural network (that can also be defined as $1 - precision$). This also implies that CSSMs that adopt a greedier approach will end up obtaining more false positives by chance.

The presence of false positives in miRAW's ANN can be partially attributed to the fact that not all the information concerning miRNA targets can be obtained from the miRNA:MBS duplex and, therefore, cannot be inferred by the neural network. For instance, aspects such as site accessibility [36] require accessing additional external data sources. This external information can be used to refine ANN outcomes by removing sites unlikely to be functional. In an attempt to reduce the likelihood of false positives, we included an *a posteriori* filtering step based on accessibility energy. It is known that miRNA binding sites that are more easily accessible tend to have higher chances of being functional targets [36]; for this reason, several tools such as PITA, miRMAP [37] or PACMIT [38] combine this information with the binding site minimum free energy (ΔG_{duplex}) to produce a refined target prediction. The site accessibility energy (ΔG_{open}) of a MBS can be defined as the energy required to unfold the secondary structure of the mRNA in order to accommodate the miRNA [36, 38]. As the calculation of ΔG_{open} requires information that extends beyond the MBS and which involves the whole mRNA sequence, it is particularly well suited for use as a *a posteriori* filter in miRAW. Following the site accessibility energy definition of [38], we implemented an ΔG_{open} filter that removed all predicted sites presenting a ΔG_{open} higher than a threshold th_{sa} . Based on results from previous

studies [36, 38], we set $th_{sa} = -10kcal/mol$. For accuracy and robustness, we computed local site accessibility following the guidelines defined in [39] and [38]. Specifically, we used the ViennaRNA package [26] and considered the 200nt surrounding the target rather than folding the whole mRNA sequence as this may result in less accurate and more complex secondary structures [38].

Implementation and evaluation

miRAW was implemented using Java. RNACoFold from the ViennaPackage [26] was used for computing the candidate sites. Implementation of the deep neural network was done using the DeepLearning4Java (DL4J) library [40]. DL4J allows the use of both CPU and GPUs for neural network training and classification. All the analyses presented in this paper were performed using GPUs due to its improved performance; however, a CPU based version of miRAW is also available.

To assess miRAW's performance, we compared it against the following commonly used target prediction tools: TargetScan release 7.1 [6], Diana microT-CDS v.4 [41], PITA v.6 [36], miRanda (built upon the mirSVR predictor) [42], mirzaG [43], Pacmit [44] and mirDB [45]. These represent the current gold standards (i.e., most commonly referenced) for microRNA target prediction software. These software periodically release datasets containing all available predicted target databases (as of January 2017) with the test datasets defined in "Methods: Dataset Preparation". We performed 10-fold validation for the **TarBase test**, and repeated the analysis for 100-fold (Fig F in [S1 File](#)) and the full **TarBase test** (Fig G, Fig H and Table D in [S1 File](#)). For the 10-fold analysis we also characterized the predictions in terms of the structure and site accessibility energy distributions to try and to gain a better understanding of the identified targets in these terms.

If a miRNA:mRNA was present in the test dataset, but missing in a release dataset, then that interaction was assigned the lowest possible score for that algorithm. For genes with multiple annotated 3' UTRs we selected the isoform used to build the test dataset. In prediction datasets where such an isoform was not available or not specified, we tested the longest isoform available. The comparison was performed using the optimal reported configuration for each tool. For the release datasets that provided a prediction score, we used a variable threshold and the *pRoc R* package [46] to build receiver operating characteristic (ROC) curves. To assess the significance of the results, we performed a Wilcoxon signed rank test for each of the evaluated metrics; Results were considered significant for $p < 0.05$ unless otherwise stated (see [S3 File](#) for specific *p*-values).

To evaluate the correlation between the target predictions for a miRNA and the corresponding gene expression profiles in the **Transfection Test Dataset** we computed the coefficient of determination (r^2) between the reported predictions for each different algorithm and the changes of gene expression levels present within the corresponding transfection dataset. As some methods such as miRAW or microT adopt binary approaches that only evaluate whether or not a miRNA is targeting a gene, rather than quantifying the repression efficacy of the miRNA target, we also examined the expression changes for the top 1% of predicted targets for each of the algorithms, counting how many of the predicted targets presented significant changes in their expression levels. In contrast to the r^2 test, this approach determines if higher confidence predictions are reliable and does not penalize methods that follow less restrictive approaches in order to favour sensitivity. As before, we considered the interactions not present in the release datasets as negatives and we assigned them the lowest score for that algorithm. mirSVR, mirDB and mirza-G have been excluded from this test due to absence of predictions for the transfected miRNAs we evaluated here.

All genes within the testing datasets correspond to the GRCh38 release of the reference human genome whilst all the miRNAs appear in miRBase version 19 and later. All tested target prediction datasets with the exception of PITA and miRanda were built using these, or more recent, releases of miRBase and the reference human genome. This might impair the performance of PITA and miRanda as some of their negative predictions may not have been tested. TargetScan, Paccommit and MIRZA-G offer two different databases in each release, one providing target sites highly conserved among species (TS_Conserved, Paccommit_Cons MG_Conserved) and one providing sites not-necessarily conserved among species (TS_NonConserved, Paccommit_NonCons, MG_NonConserved). In both cases, the two versions of the databases were considered.

Results

The two key components of miRAW's design are (i) the ANN that analyzes candidate target sites and (ii) the CSSM used during the target prediction step. To assess these two aspects of the model we first evaluated the outputs of the ANN training process through cross-validation and then investigated performance using the different candidate site selection methods outlined in the methodology. These comprised the novel (non-canonical) models implemented for miRAW—*miRAW-6-1:10*, *miRAW-7-1:10* and *miRAW-7-2:10*—and the existing (canonical) models already used in TargetScan and PITA—*miRAW-TS* and *miRAW-Pita*. In addition, we explored how *a posteriori* filtering can improve the reliability of the predictions by evaluating miRAW results for the predicted canonical and non-canonical targets in the presence and absence of filtering. Finally, we tested miRAW's performance by comparing it against TargetScan, Diana microT-CDS, PITA, miRanda, Paccommit, mirza-G and mirDB, which represent the most commonly used target site predictors based on citations.

Neural network evaluation

Cross validation of miRAW's ANN presented good results in terms of predicting both positive and negative sites. This was independent of the loss function used during training, with all evaluated metrics resulting in scores higher than 0.90 (Fig 3 and Tables A and B in S1 File). Nonetheless, accuracy and area under the curve (AUC) metrics show that the XENT (*accuracy* = 0.92, *AUC* = 0.96) loss function resulted in a statistically significantly (Wilcoxon signed rank test) better network compared to the NLL function (*accuracy* = 0.91, *AUC* = 0.93). This was reflected in both prediction of positive targets, where the XENT network achieved higher precision, sensitivity and F1-score compared to the NLL network. For negative target prediction, the XENT network returned a larger number of predictions than the NLL but nevertheless achieved a similar negative precision. It is worth noting that, across the different folds, the XENT network was less consistent in terms of negative precision than in positive precision and that for most of the folders it presented more FN than FP. This, combined with the difference in sensitivity and specificity values (0.92 vs 0.94), suggests that the XENT network is slightly biased towards negative predictions as it predicted more negative than positive sites for each fold. Despite this fact, the statistically significant higher accuracy, AUC and F1-scores (both positive and negative) indicate that the XENT network is more appropriate than the NLL network for miRNA target prediction.

Fig 4 shows the receiver operating characteristic (ROC) curves for the NLL and XENT networks. The XENT network has a larger AUC, indicating superior performance. Moreover, there is a clear difference in shape of the curves and distribution of data points. The XENT network exhibits a smooth curve with relatively evenly spaced points, the NLL curve is more discontinuous and the data points are concentrated within a smaller region. This indicates a

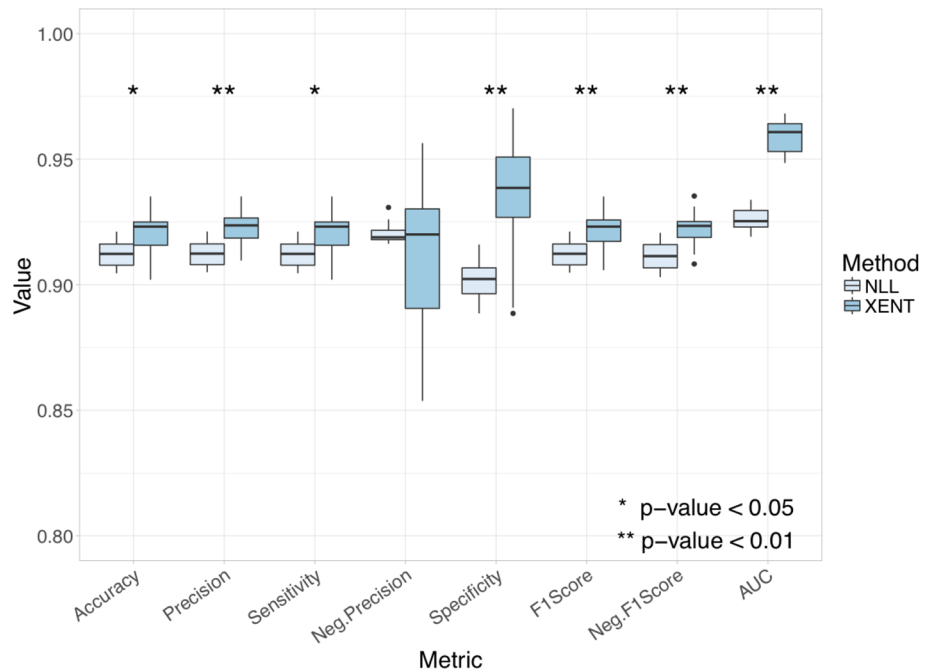


Fig 3. Comparison of miRAW’s neural network performance with the positive and negative training datasets when using a negative log likelihood (NLL) loss function and a cross entropy loss function (XENT) with 10 fold cross validation. XENT provides significantly better accuracy, precision, sensitivity, specificity, F1-scores and area under the curve (AUC) compared to NLL (* p-value < 0.05, ** p-value < 0.01).

<https://doi.org/10.1371/journal.pcbi.1006185.g003>

stronger polarization of the NLL network, where all the predictions are strongly classified as a positive or a negative target (i.e. class value is very close to 1 or -1). Conversely, the smoothness of the XENT network represents a more progressive classification, allowing the presence of less polarized predictions, resulting in a more generalized predictive ability. The shape of the NLL curve also suggests that the NLL network might be overfitted and that it might struggle to classify new observations that significantly differ from the training data—this is also supported by the average epoch numbers used by each network to reach its optimal set of weights, 7.32 for the XENT network versus 11.21 for the NLL network.

The general consistency of calculated parameters and ROC curves across the different folds in the two networks (Tables A and B in [S1 File](#)) indicates that the model performance is not dependent on the training and test datasets used. Fold 7 of the XENT network achieved the highest performance in terms of all the considered evaluation metrics and so this ANN model was selected for testing in the gene prediction stage.

miRNA target prediction with miRAW: The role of the site selection method

To investigate the impact of the site selection method, we compared the performance of five different CSSMs (miRAW-6-1:10, miRAW-7-1:10, miRAW-7-2:10, miRAW-TS and miRAW-Pita) in the presence and absence of a site-accessibility energy (AE) filter of -10kcal/mol, summarized in [Fig 5](#) and Table C in [S1 File](#). All the methods achieve accuracies between 0.64 and 0.74 with significant differences depending on if the site-accessibility filtering is present (AE) or absent (NF). This effect can be seen when the different CSSMs are ordered by accuracy. miRAW-Pita-NF, miRAW-TS-NF, miRAW-7-2:10-AE and miRAW-7-1:10-AE obtain

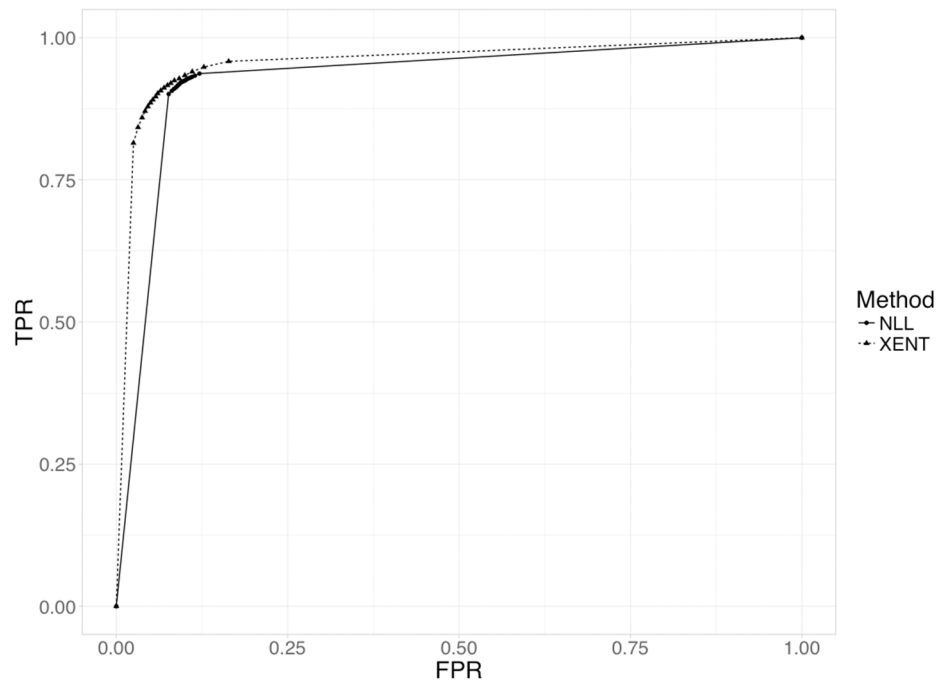


Fig 4. Average ROC curves for cross validation of miRAW's neural network using the positive and negative training datasets. The dashed line corresponds to the aggregated ROC obtained with the XENT loss function (AUC = 0.96), the solid line corresponds to the NLL loss function (AUC = 0.93). The XENT loss function presents a smoother ROC curve with a higher area under the curve, indicating better performance.

<https://doi.org/10.1371/journal.pcbi.1006185.g004>

similar accuracies (≈ 0.72) with no statistically significant differences in the metric, although miRAW-6-1:10-AE has a slightly poorer performance (0.71). However, miRAW-7-2:10-NF, miRAW-7-1:10-NF, miRAW-Pita-AE and miRAW-TS-NF ranked in the bottom of the table in terms of accuracy. Thus, while the non-canonical CSSMs specifically derived for miRAW obtain better results in the presence of filtering, the canonical derived CSSMs (miRAW-Pita and miRAW-TS) exhibit improved performance in the absence of filtering.

The F1-scores summarize how well a particular class is classified by a particular CSSM, an optimal CSSM will perform well for both positive and negative targets. Fig 5 and Table C in S1 File show that CSSMs with reported low accuracy underperform in at least one of the F1-scores: miRAW-7-2:10-NF, miRAW-7-1:10-NF and miRAW-6-1:10 have high positive F1-scores but a low negative F1-score caused by an excess of false positives (causing a low specificity) whilst miRAW-Pita-AE and miRAW-TS-AE have a low positive F1-score cause by the excess of false negatives (causing a low sensitivity). However, miRAW-Pita-NF, miRAW-TS-NF, miRAW-7-2:10-AE and miRAW-7-1:10-AE all obtain balanced F1-scores ranging between 0.71 and 0.74, indicating an ability to effectively predict both positive and negative targets.

Fig 6 summarizes the composition of site types by each CSSM. Fig 6a shows the average number of canonical (blue) and non-canonical (green) sites identified for each miRNA:gene pair in the test dataset whilst Fig 6b shows the relative proportions of each identified type. As expected, CSSMs methods following conservative approaches (miRAW-Pita and miRAW-TS) identified more canonical than non-canonical potential sites, whereas the miRAW CSSMs identified larger total numbers of potential sites, of which many more were non-canonical. The figure also shows that the number of predicted canonical sites varies according to the

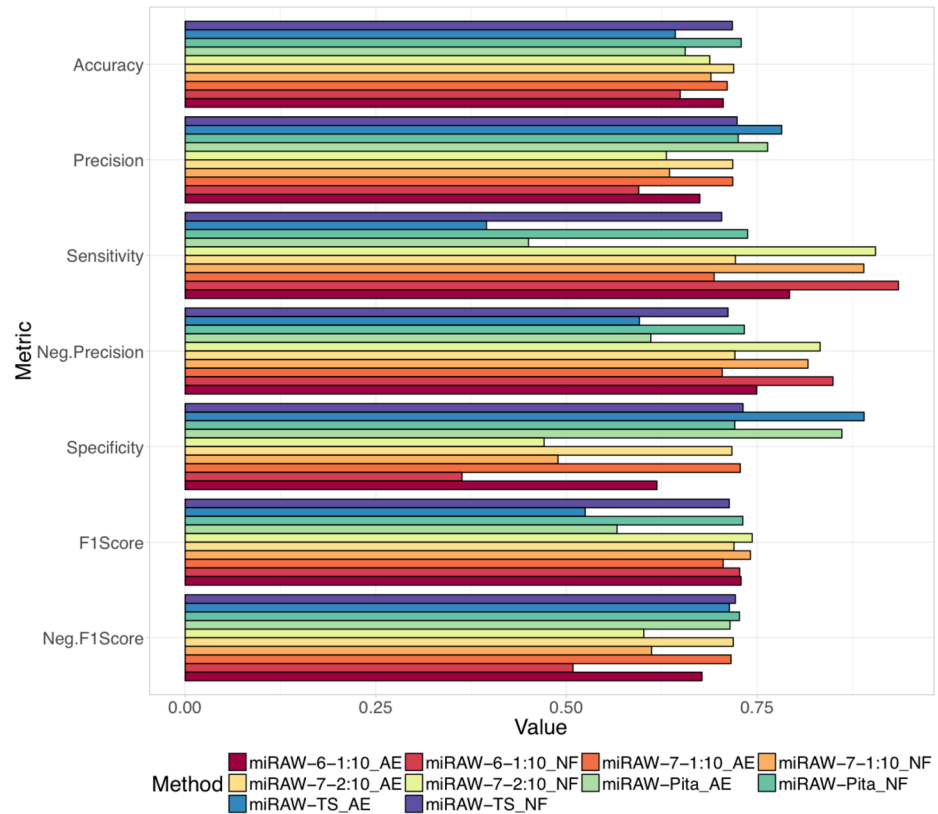


Fig 5. Evaluation of miRAW using different CSSMs and in the presence (AE) and absence (NF) of ΔG_{open} filtering (threshold = -10Kcal/mol). Results are evaluated in terms of accuracy, precision, sensitivity, negative precision, specificity, positive F1-score and negative F1-score. The best results in terms of accuracy and negative F1-Score were obtained when using Pita's CSSM and when no filtering was applied. The highest positive F1-Score was obtained by miRAW-7-2:10. Canonical CSSMs (TS and Pita) obtain better results when no filter is applied, the application of ΔG_{open} filtering introduces false negatives resulting in low sensitivity and negative precision. Conversely, non-canonical CSSMs (miRAW-6-1:10, miRAW-7-1:10 and miRAW-7-2:10) present better results when filtering is applied as this reduces the number of false positives, thereby increasing precision and specificity; when no filtering was applied miRAW was biased towards the prediction of positive sites, which resulted in high sensitivity but low precision.

<https://doi.org/10.1371/journal.pcbi.1006185.g005>

selected CSSM, with the conservative approaches obtaining more canonical sites than the greedy approaches. While this seems to contradict the expectation that all the CSSMs should identify similar canonical sites, the difference can be understood when the higher number of accepted binding structures recognized by the non-canonical oriented CSSMs are taken into account. Several of the sites identified by miRAW-Pita or miRAW-TS overlap with non-canonical binding sites predicted by the miRAW specific CSSMs that present greater stability and are therefore preferentially selected (Fig 7). Fig 6b also shows that the application of the site accessibility filter does not significantly alter the ratio of canonical and non-canonical sites for any CSSM, suggesting that site accessibility filters do not act as a discriminator between canonical and non-canonical sites.

Site accessibility filtering

Fig 5 shows that site accessibility filtering has very different effects in the canonical and non-canonical CSSMs. This difference can be understood by considering the different approaches taken by the canonical (conservative) and non-canonical (greedy) models. The conservative

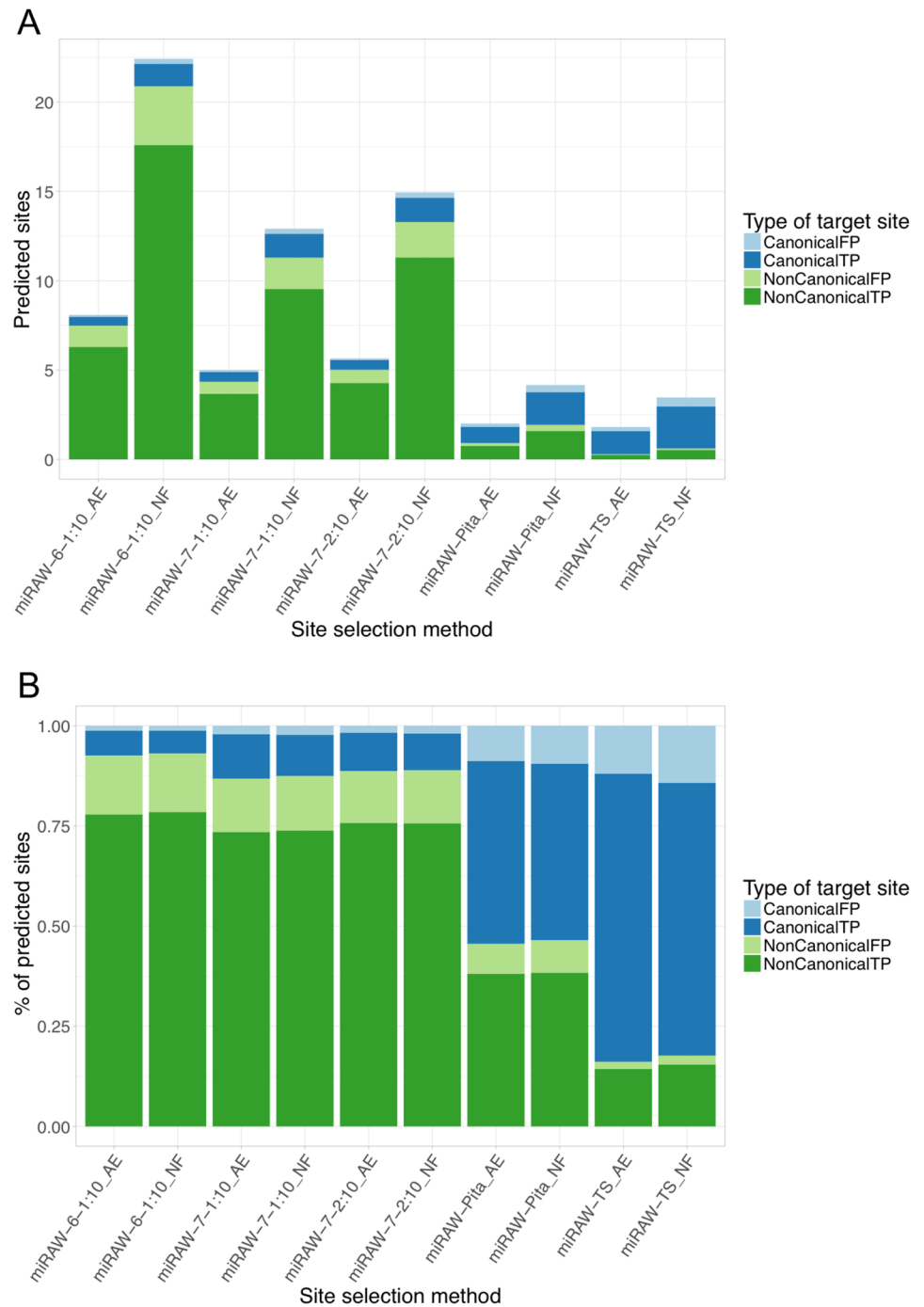


Fig 6. Composition of site types identified by the different CSSMs implemented in miRAW. (a) Average number of miRNA binding sites (MBS) identified by the different CSSMs in a miRNA:mRNA pair. Blue color refer to MBS following a canonical structure, green refer to non-canonical sites; darker colors correspond to positive sites predicted in experimentally verified functional miRNA:mRNA pairs (true positives), lighter colors refer to positive sites identified in non-functional pairs (false positives). (b) Proportion of canonical, non-canonical, true positive and false negative sites identified by each of the candidate site selection methods. Figures illustrate that miRAW-Pita and miRAW-TS CSSMs are strongly biased towards detection of canonical sites whereas miRAW specific CSSMs detect a higher proportion of non-canonical sites.

<https://doi.org/10.1371/journal.pcbi.1006185.g006>

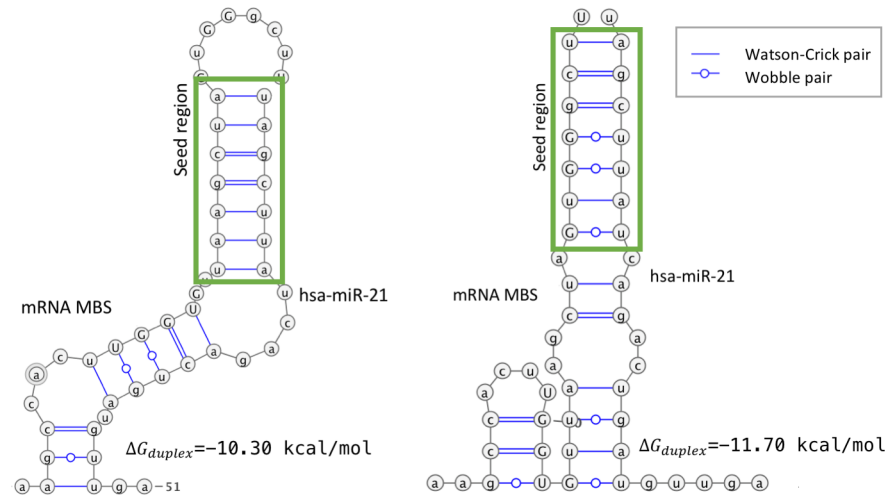


Fig 7. Example of a miRNA binding site that can accommodate a miRNA (hsa-miR-21) with different binding patterns and different site stabilities. The left figure shows a canonical binding (perfect 7mer) with $\Delta G_{duplex} = -10.30 \text{ kcal/mol}$ while the right figure shows a non-canonical binding (containing wobbles in the seed region) $\Delta G_{duplex} = -11.70 \text{ kcal/mol}$. While the left structure can be identified by both canonical and non-canonical CSSMs, a non-canonical CSSM will preferentially select the right hand structure as a potential MBS since it reports a more stable predicted binding energy.

<https://doi.org/10.1371/journal.pcbi.1006185.g007>

models only consider canonical sites containing close to perfect complementarity (≥ 7 mers) in the seed region and a restricted number of non-canonical sites, resulting in a limited amount of candidate sites. Conversely, the greedy models not only recognize canonical sites but also screen a wide range of non-canonical sites that follow unconventional target structures, obtaining a much higher number of potential target sites. This is illustrated in Fig 8a which shows the average and median number of potential MBSs identified for a miRNA:mRNA pair for each CSSM. The boxplot shows that, in the absence of filtering, more potential MBSs are identified for the more relaxed non-canonical CSSMs. For example, on average, miRAW-Pita_NF and miRAW-TS_NF identify between 3 and 4 sites respectively per miRNA:mRNA pair, whereas miRAW-7-1:10_NF and miRAW-6-1:10_NF identify ~ 22 and ~ 13 sites respectively. However, as more potential MBSs are identified, the chance of incorrectly obtaining a false positive increases.

From the training results for the XENT network (Table A in S1 File), we can estimate the overall probability of the network obtaining a false positive prediction as 0.068 ($P(FP) = 1 - \text{precision}$). However, there is greater variation when we independently consider the various CSSMs (Eq 6). Fig 8b shows the relationship between the probability of obtaining a false positive and the average number of sites obtained by each CSSM.

The non-canonical CSSMs with filtering are at the bottom left of the curve, indicating the efficacy of the filtering step, *a-posteriori* filtering for these CSSMs reduces the number of identified potential MBS which, in turn, lowers the probability of returning a false-positive error in the network and obtaining a false positive miRNA:mRNA classification. Conversely, application of *a posteriori* filtering in conservative CSSMs significantly reduces the number of candidate sites, leading to the exclusion of true binding sites and increasing the probability of classifying a miRNA:mRNA pair as a false negative.

We next investigated the relationship between the ΔG_{open} threshold applied in miRAW and the accuracy and the negative and positive F1-score metrics. The results are summarized in Fig 9a–9c. Again, the canonical and non-canonical CSSMs curves exhibit distinct

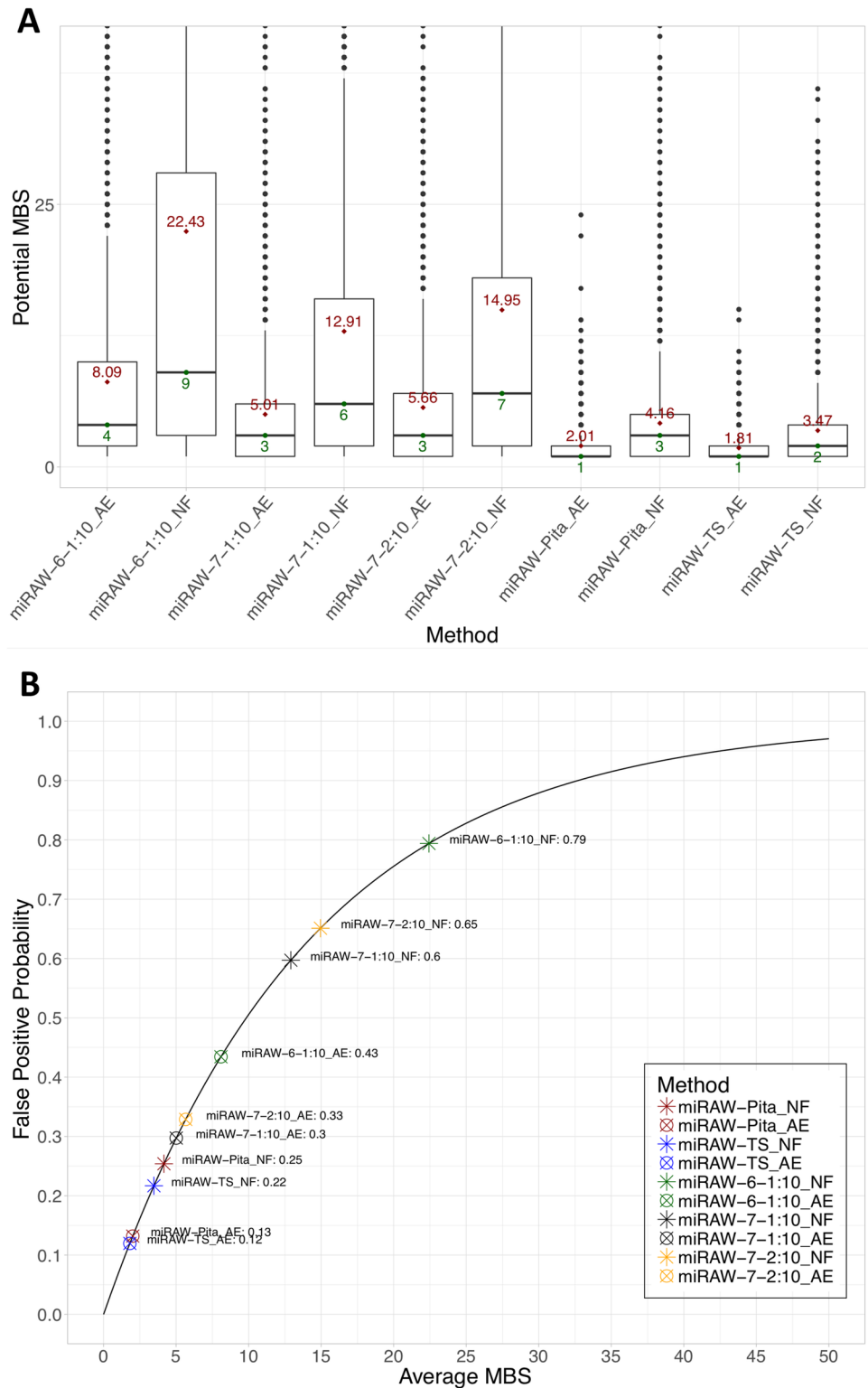


Fig 8. (a) Number of MBSs identified by each CSSM in the presence (AE) and absence (NF) of ΔG_{open} filtering. Values > 40 are excluded from the plot for comparative purposes. Red (upper) numbers and green (lower) numbers show the mean and the median respectively of the number of MBSs identified by each CSSM. miRAW-Pita_AE and miRAW-TS_AE have the lowest number of MBSs while miRAW_6-1:10_AE has the highest. The number of sites discarded by accessibility energy filtering (AE) is higher in non-canonical oriented CSSMs than in canonical-oriented

ones. (b) Relationship between the probability of miRAW obtaining a false positive prediction and the number of sites identified by each CSSM. The fact that miRAW classifies a miRNA:mRNA duplex as positive if a single miRNA:MBSs is predicted as positive by the neural network increases the chances of obtaining a false-positive prediction as the number of potential MBSs increases. As non-canonical oriented CSSMs tend to detect higher numbers of potential MBSs they are more sensitive to a false positive. The application of ΔG_{open} filtering reduces the number of potential MBSs and therefore reduces the probability of a false positive.

<https://doi.org/10.1371/journal.pcbi.1006185.g008>

characteristics. All the metrics for the canonical CSSMs improve with increasing ΔG_{open} , i.e., these CSSMs are most effective in the absence of any threshold filtering. Conversely, the non-canonical CSSMs improve with low ΔG_{open} thresholds. While the positive F1-score progressively increases with high ΔG_{open} thresholds, the negative F1-score achieves a peak value between -8 and -10kcal/mol. This reflects the fact that, as the ΔG_{open} threshold is increased, more sites are considered by miRAW: increasing sensitivity (more true positives) but in turn reducing specificity (less true negatives and more false positives). The observation that site

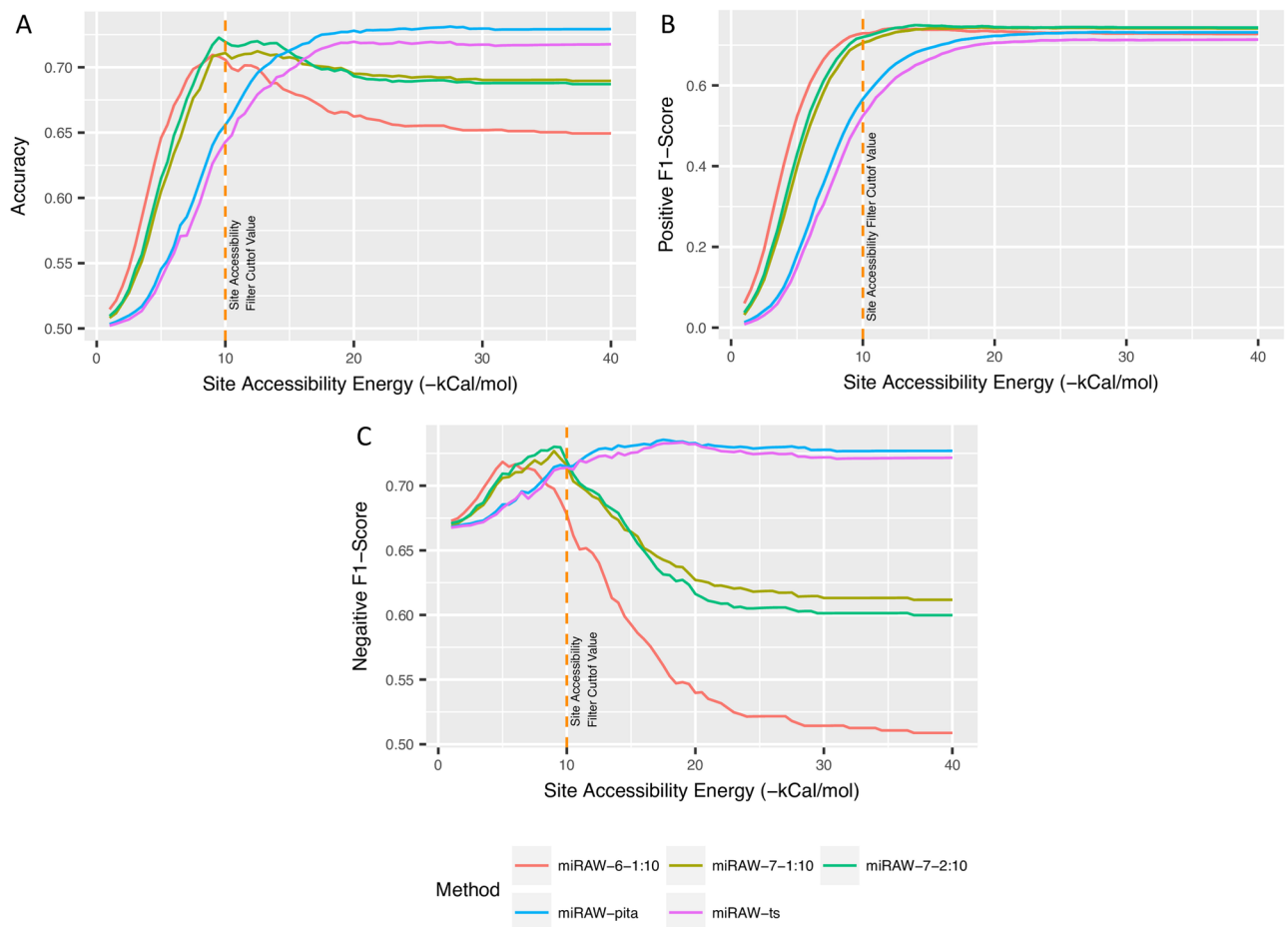


Fig 9. Performance of miRAW in relation to ΔG_{open} filtering threshold. (a) Variation in accuracy with respect to ΔG_{open} filtering threshold. (b) Variation in positive F1-score with respect to ΔG_{open} filtering threshold. (c) Variation in negative F1-score with respect ΔG_{open} filter threshold. Graphs show that for non-canonical oriented CSSMs, the application of a ΔG_{open} improves accuracy and negative F1-score values as better scores are obtained when sites with higher ΔG_{open} values are removed. The peak in the accuracy curve and the fact that the positive F1-score reaches a plateau around $\Delta G_{open} = 10$, indicates this is an optimal cutoff value. For the canonical-oriented CSSMs, accuracy and positive F1-score metrics reach a plateau around $\Delta G_{open} \geq 23$ whereas the negative F1-score curve slightly decreases from $\Delta G_{open} \geq 18$. However, the decrease is small compared to the changes in the positive F1-score chart, suggesting that ΔG_{open} filtering has limited relevance for these models.

<https://doi.org/10.1371/journal.pcbi.1006185.g009>

accessibility filtering increased the performance of non-canonical CSSMs but decreased performance in canonical CSSMs suggests a potential bias towards low site-accessibility energy in non-canonical sites. To explore this possibility, we examined the site accessibility energy distribution of the sites predicted by the different CSSMs and separated them into canonical and non-canonical sites found in true positive (TP) and false positive (FP) miRNA:mRNA pairs. The results are shown in Fig 10a–10d.

Fig 10a groups data according to type of site and classification outcome (canonical TP, canonical FP, non-canonical TP and non-canonical FP). For the canonical TP sites, the different CSSM energy distributions do not present statistically significant differences between them (pairwise comparison using Kolmogorov-Smirnov test; we considered differences as statistically significant when $p < 0.05$) (Fig 10b); this is explained by the fact that all the site selection methods identify similar canonical sites. For the FP canonical sites there are no significant

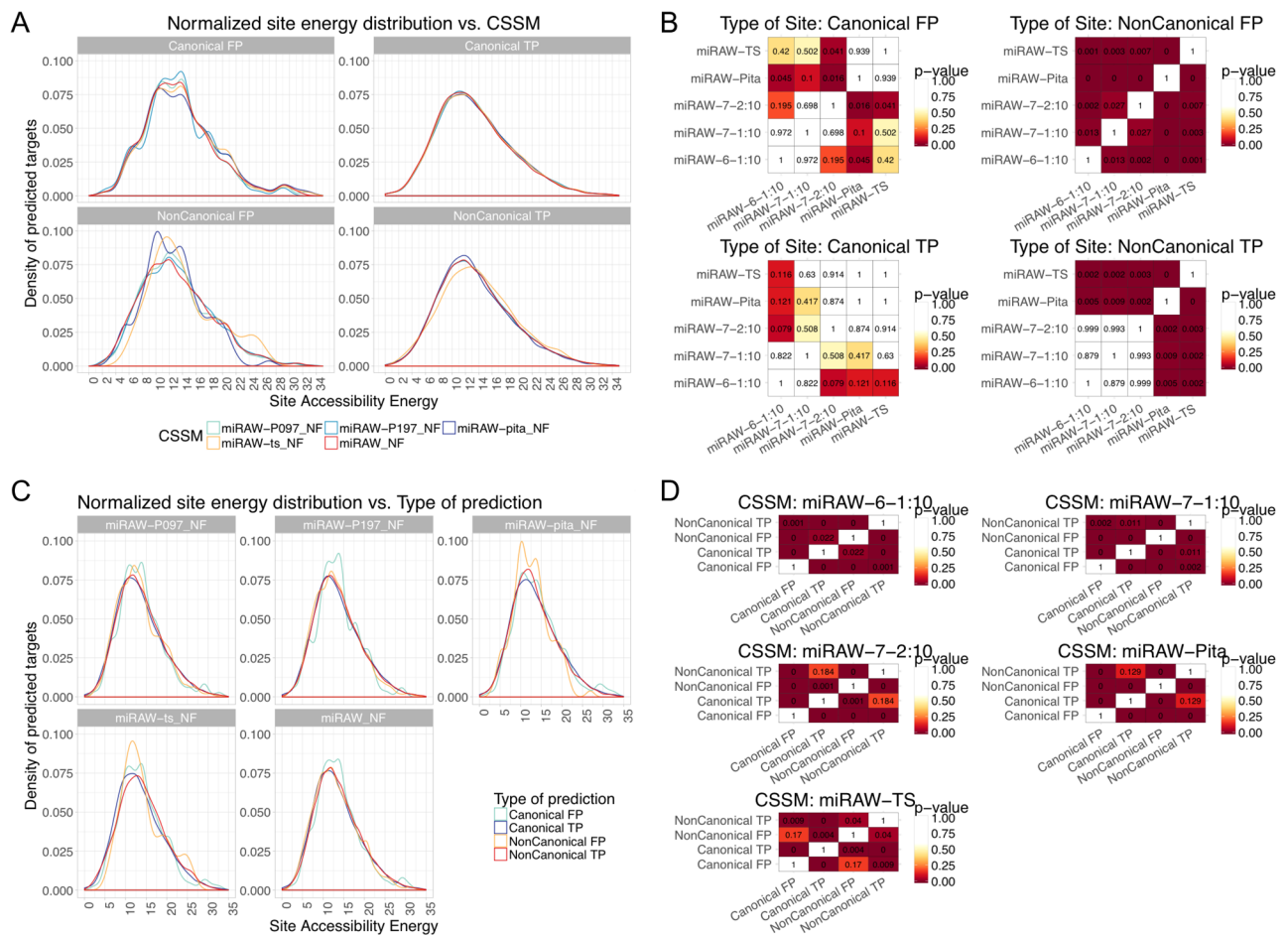


Fig 10. Energy distributions of the site accessibility energy ΔG_{open} for target sites predicted by miRAW using different CSSMs (a) ΔG_{open} distributions grouped by the type of site identified by each CSSM (with extreme values removed for comparative purposes). Blue curves correspond to non-canonical CSSMs, red and yellow curves correspond to canonical CSSMs. In general, ΔG_{open} distributions are smoother for true positive sites (for both canonical and non-canonical CSSMs) than for false positive sites. (b) Pairwise comparison for statistical significance among CSSMs (Kolmogorov-Smirnov test ($p < 0.05$)). The most striking differences are between the ΔG_{open} distributions of non-canonical false positive sites, with differences identified between all CSSMs. For non-canonical true positive sites, statistical significance is only identified between canonical (miRAW-TS, miRAW-Pita) and the non-canonical (miRAW specific) CSSMs. For canonical sites, there are fewer significant differences; this can be explained by the fact that all the CSSMs identify similar MBSs. (c) Same energy distribution data in (a), but grouped by the CSSMs used for identifying the sites. The smoother distribution of the true positives is also apparent in these plots. (d) Pairwise comparisons of the different site types identified by each CSSM (TP/FP and canonical/non-canonical)—(Kolmogorov-Smirnov test ($p < 0.05$)).

<https://doi.org/10.1371/journal.pcbi.1006185.g010>

differences among the three non-canonical CSSMs, however the miRAW-Pita CSSM does have significant differences with these CSSMs. From the corresponding graph in Fig 10a (top right) the peak in the miRAW-Pita distribution occurs around a threshold of -10kcal/mol whereas for the non-canonical CSSMs the peaks occur between -14 and -15 kcal/mol. The reason for this difference is unclear as we would anticipate a similar set of false positive canonical sites for all the CSSMs—as all consider sites with perfect seed region complementarity—. However, one possibility for this divergence may be a consequence of the fact that, in contrast to the other CSSMs, miRAW-Pita is the most conservative and does not consider pairing beyond the seed region as a factor for determining the binding site. This is also consistent with the situation shown in Fig 7 where some canonical sites identified by miRAW-Pita can accommodate more stable non-canonical bindings. This explanation is also consistent with the lower peak in the miRAW-TS CSSM curve, miRAW-TS only considers orthodox non-canonical sites (involving several consecutive WC pairs outside the seed region) compared to miRAW CSSMs. For the non-canonical TPs, there are significant differences between the canonical and non-canonical CSSMs. Although the profiles of the curves for the miRAW-Pita and non-canonical distributions appear similar, there are significantly more sites predicted at the peak energy (≈ -12 kcal/mol) for miRAW-Pita than for the non-canonical CSSMs, although it is unclear whether this is the only feature responsible for the estimated significant differences between these distributions. Finally, for the non-canonical FP sites, there are significant differences between all the CSSMs, with the non-canonical CSSMs generally presenting distinct distributions compared to the TS and Pita CSSMs. As the exact differences between normalized energy distribution curves were unclear even between statistically significantly different situations, we also performed pairwise comparisons between the mean (Mann-Whitney U test; $p = 0.05$) and median values (Mood's median test; $p = 0.05$) for each of the distributions. We found that the miRAW-Pita CSSM tended to have higher ΔG_{open} in non-canonical sites (both TP and FP), which can be attributed to the fact that miRAW-Pita only considers non-canonical sites based on the seed region whereas both TS and CSSM-miRAW accommodate sites beyond this. Therefore MBSs in Pita non-canonical sites have less dependency on accessibility as they only need to accommodate a (smaller) seed region compared to the broader accessibility by the non-canonical sites in the other CSSMs. This is also observed to some degree between miRAW-TS and the miRAW specific CSSMs; miRAW-TS requires several consecutive binding sites outside of the seed region but the miRAW-CSSMs accommodate even more flexible structures.

Fig 10c shows the same site energy distribution information, but with each plot grouped by CSSM. In all cases, the TP curves have smoother distributions than the FP curves and Kolmogorov-Smirnov tests (Fig 10d) report statistically significant differences ($p < 0.05$), between the energy distributions of the predicted canonical and non-canonical sites for almost all the CSSMs. False positives present more irregular distributions in all the CSSMs. Despite these observed differences, there is no clear explanation for either the distinction between canonical or non-canonical sites or true and false positives.

In summary, the results in Fig 10 indicate that: there are differences in the energy distributions of the sites obtained using different CSSMs; there are differences between canonical and non-canonical sites; and there are differences between the energy distributions for the true and false positives. Nevertheless, these differences are not sufficient to identify any clear discriminatory features between MBSs, i.e., ΔG_{open} application of a ΔG_{open} filter improved performance of CSSMs by reducing the amount of potential MBS (thus reducing the probability of a false positive), rather than by identifying a relationship between ΔG_{open} and true or false positives.

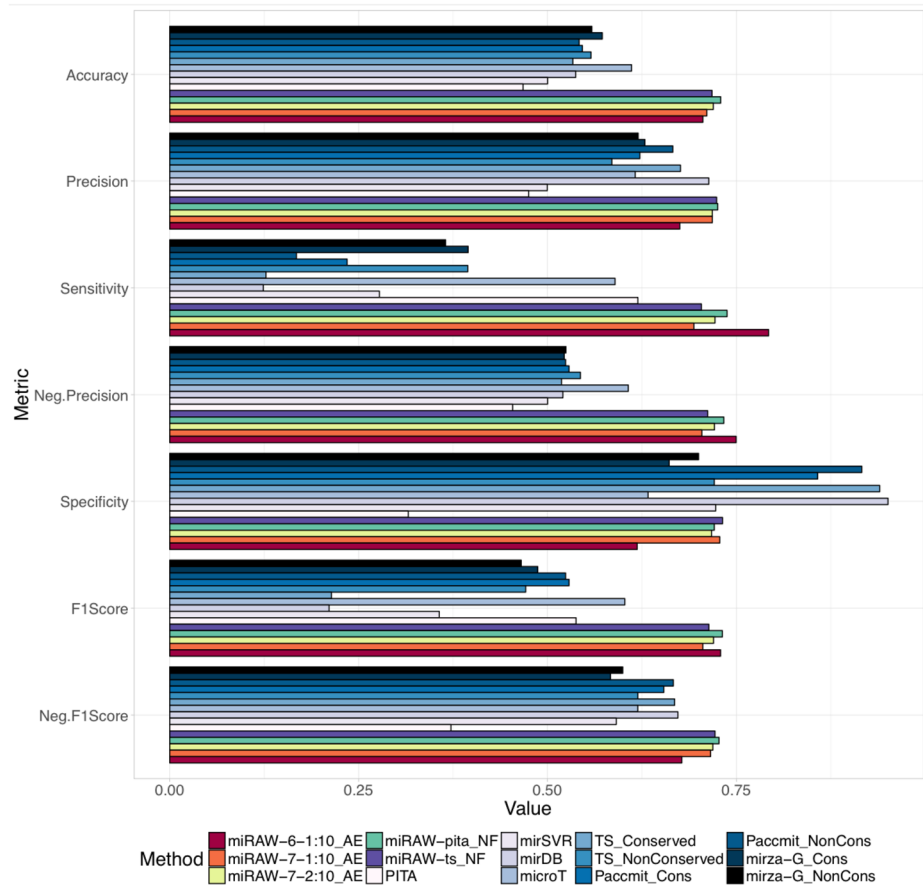


Fig 11. Comparison of miRAW with different CSSMs and eight other commonly used target prediction tools (TargetScan C & NC, Diana microT-CDS v4, PITA v6, miRanda, Paccommit, mirzaG and mirDB). Colouring for miRAW results are consistent with the color scheme in Fig 5; other prediction tools follow a light to dark blue color schema. Evaluation was determined in terms of accuracy, precision, sensitivity, negative precision, specificity and F1-score (an ideal predictor would obtain a score of 1 for each metric). All miRAW configurations outperformed other methods in terms of accuracy and F-scores, which are good representations of general measures of performance. mirDB and Target-Scan (highly conserved targets) obtained high specificity scores but a low negative precision as a consequence of their conservative approach, which classified almost all the miRNA:mRNA pairs as negative. After miRAW, microT was the method which presented better and more balanced results.

<https://doi.org/10.1371/journal.pcbi.1006185.g011>

Comparison with other miRNA target predictors

Fig 11 and Fig G and Table C in S1 File compare the performance of the best miRAW configurations—miRAW-Pita-NF, miRAW-TS-NF, miRAW-6-1:10-AE, miRAW-7-1:10-AE and miRAW-7-2:10-AE— with state-of-the-art target prediction software tools—TargetScan release 7.1 [6], Diana microT-CDS v.4 [41], PITA v.6 [36], miRanda (built upon the mirSVR predictor) [42], Paccommit [44], MirzaG [43], and mirDB [45]—using the dataset defined in “Methods: Dataset Preparation”.

All the miRAW implementations generally obtained (statistically significant—See S3 File -) better results than each of the other prediction tools for all the evaluated metrics, except for specificity, where most of the methods obtain a similar score, and for precision where mirDB also obtained similar results. Generally, the other methods presented low accuracies: TargetScan, PITA, miRanda and mirDB values were around 0.50; Micro-TDS achieved a value of 0.61, but this was still much less than that reported for miRAW (0.78). For mirDB, miRanda,

TS_Conserved and TS_NonConserved, the low accuracies seem a consequence of their tendency to misclassify true targets as negative; i.e., despite reporting high specificities (> 0.70), their negative precision, and hence their F1-score, was low. Conversely, PITA reported better sensitivity than specificity, but obtained similar positive and negative precision. Finally, microT-CDS did not show a particular bias towards any of the classes. It presented balanced specificity (0.63) and sensitivity (0.59) and similar precision (0.62) and negative precision (0.61). Nevertheless, it was still outperformed by all the tested miRAW configurations. The balance behaviour observed for microT-CDS and miRAW is also reflected in the shape of their ROC curves when using the full dataset (Fig H in [S1 File](#)), which presented higher AUCs (miRAW > 0.75 , microT-CDS ~ 0.72).

These results also highlight how the consideration of interspecies site preservation influences the prediction results. This is particularly apparent in the performance of the two different TargetScan releases. TargetScan achieved low accuracy for both conserved (0.53) and non-conserved datasets (0.56); in both cases the reason for such low accuracy are a consequence of the high number of false negatives. The TS_Conserved model presented a high specificity (0.94), meaning that it classified almost all negative targets correctly, but a large number of positive sites were also misclassified as negative, which caused the negative precision to drop to 0.52. Despite filtering positive targets using interspecies conservation information, the TS_Conserved precision (0.68) was still lower than the values achieved with any miRAW configuration. For the non-conserved sites dataset (TS_NonConserved) the increase in the number of positive predicted sites augmented the number of true positives and sensitivity (0.40) but this, in turn, increased the number of false positives, which reduced precision to 0.59 and specificity to 0.72. Similarly, Mirza-G and Pacmit achieved better performance in the releases that do not consider interspecies conservation as a prediction factor. Comparison of TargetScan performance with miRAW reveals that both releases obtained lower performances than any miRAW configuration in all the evaluated metrics with the exception of specificity, which is a consequence of the conservative approach used by TargetScan regarding positive classification.

Two of the tested methods (PITA and mirSVR) rely on thermodynamic features such as site accessibility ΔG_{open} or duplex stability ΔG_{duplex} for target refinement. However, neither method achieved good performance. PITA obtained a relatively high sensitivity compared to other methods (0.62) meaning that it retrieved most of the positive sites, however it has a low precision (0.48) meaning that several negative targets were misclassified. Considering that PITA identifies mostly canonical sites and that it bases its classification on the combination of ΔG_{duplex} and ΔG_{open} , this indicates that thermodynamic features alone are not sufficient for differentiating a positive and a negative target, consistent with our results in [Figs 8–10](#). As a consequence several negative targets with low accessibility energy are wrongly classified as positive. Conversely, the miRAW-Pita-NF results, which share the same site selection method, presents better scores in all the evaluated metrics. Considering that miRAW-Pita-NF uses the same canonical target-oriented CSSM as PITA but does not use ΔG_{open} for determining the functionality of the miRNA:mRNA pair, this also indicates that ΔG_{open} does not appear to be the most important (i.e. most effective) feature for evaluating canonical sites. This is consistent with the fact that miRAW-Pita-NF and miRAW-TS-NF outperformed miRAW-Pita-AE and miRAW-TS-AE, which only considered sites with low ΔG_{open} . However, our observation that the methods based on the non-canonical CSSMS had improved performance in the presence of a ΔG_{open} filter, suggests that this feature does have a role in target functionality. This apparent contradiction can be understood by recognizing that such a role is primarily linked to the broader set of non-canonical sites which correspondingly have a larger range of ΔG_{open} values,

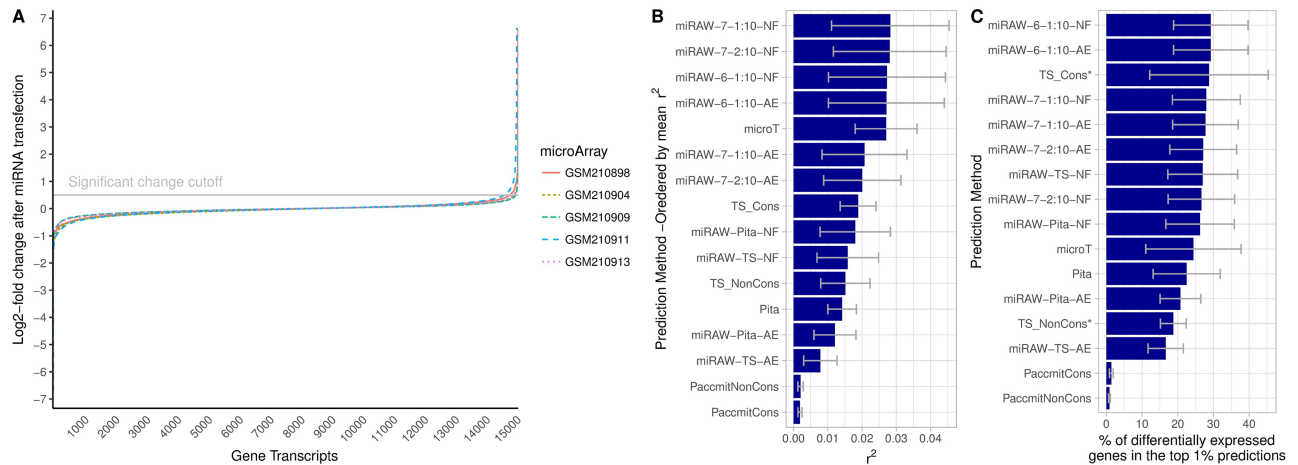


Fig 12. Correlation between target prediction and gene expression change after miRNA transfection to HeLa cells. A) Gene expression fold-change distribution after miRNA transfection to HeLa cells. The distribution shows that only a small fraction of genes interacted with miRNAs hsa-miR-9-5p, hsa-miR-181a-5p, hsa-miR-148b-3p, hsa-miR-142-3p and hsa-miR-132-3p. B) Coefficient of determination (r^2) between miRNA targets predicted by different algorithms predictions and mRNA fold changes observed in the dataset. Higher r^2 values indicate a higher link between predictions and mRNA fold changes. *TargetScan was not evaluated for hsa-miR-148b-3p (GSE8501-GSM210911) due to lack of predictions for that miRNA. C) Percentage of the top predictions of each algorithm that corresponded to genes that presented changes in their gene expression ($\geq \log(2)$).

<https://doi.org/10.1371/journal.pcbi.1006185.g012>

many of which possess higher secondary structure stability, therefore making binding site access difficult.

Correlation between target prediction and gene expression change

Fig 12B shows the coefficient of determination (r^2) between the target predictions made by the different algorithms and the expression level changes present in the the transfection test datasets. Four non canonical-oriented variants of miRAW (miRAW-7-1:10-NF, miRAW-7-2:10-NF and miRAW-6-1:10-NF, miRAW-6-1:10-AE) obtained the best correlation, with $r^2 \approx 0.033$, followed by microT-CDS ($r^2 = 0.027$). Focusing on miRAW, non-canonical oriented methods clearly outperformed the canonical oriented ones, which ranked at the bottom of the table. In this test, site accessibility energy filtering did not improve the r^2 score of the miRAW methods, although miRAW-6-1:10 performed similarly with and without filtering. Regarding the rest of the methods, microT outperformed TargetScan, Paccmit and Pita; this ranking is consistent with the one obtained by the different miRAW configurations as methods considering more non-canonical binding structures outperform the ones focused on canonical ones. The r^2 values obtained by all the methods were low, this can be explained by the fact that methods tend to adopt a binary classification approach to predict if a miRNA is targeting a gene and that prediction scores reflect confidence on the predictions rather than the efficiency of the target itself; quantifying the effects of such targeting would require a regression approach. In addition error in the microarray measurements, different miRNA transfection efficiencies or secondary effects of introducing the miRNAs may caused unexpected variability in the expression profiles that can affect r^2 . The low scores obtained in this analysis by even the best methods might also be consequence of the simplicity of the test: the datasets contain the gene expression changes provoked by an isolated miRNA in a specific tissue sample, a situation that is rarely observed in *in vivo* scenarios, where miRNAs and genes have *many-to-many* relations.

Fig 12C shows the proportion of the most 161 confident predictions (top 1%) of the different algorithms that corresponded to genes differentially expressed in the microarrays of the

transfection test dataset. The functional predictions provided by the different miRAW configurations ranged between 66.87% and a 16.62% depending on the tested microarray, being miRAW-6-1:10-NF the configuration that presented the best results ($\mu = 29.25\%$). In the top ranked methods, configurations that did not rely on site-accessibility filtering obtained slightly better results ($\mu = 29.25\%$, $\mu = 28.00\%$) than those ones that filtered unaccessible sites ($\mu = 29.15\%$, $\mu = 27.75\%$); nevertheless, those differences cannot be considered significant. Similarly, non-canonical oriented methods obtained slightly better performances than canonical-oriented ones although the difference was not significant. Regarding the rest of tested methods, the TargetScan release that considered interspecies site conservation performed similar to miRAW (29.06%) whilst the other methods were outperformed. The obtained results are fairly consistent with the results of the previous test as, in general, methods that provided higher precisions reported a higher proportion of differentially expressed genes in their predictions, being Pacmit the exception to that trend.

Discussion

The imprecise nature of miRNA targeting allows the generation of complex regulatory networks and understanding the mechanisms and functions of these networks requires systematic experimental investigation. In the ideal world it would be possible to experimentally verify the target set of all miRNAs, but both the cost and limited throughput of current methods means that miRNA studies depend on computational predictions to complement experimental data.

The requirement for complimentary base pairing within the seed region for miRNA targeting has been established through numerous experimental studies and forms the basis of all current prediction tools. Initially, it was assumed that seed region binding was a core requirement for all targets but, as more non-canonical targets were experimentally identified, prediction tools evolved to try to accommodate this divergence. The differences in how the various prediction tools recognize the relevance of specific deviations from canonical binding highlights the complexity surrounding the targeting process. The most conservative tools only consider targets that achieve full complementary pairing in the seed regions, whereas other tools allow compensatory binding to accommodate seed mismatches. Moreover, to accommodate non-canonical binding sites, current target prediction tools rely on the use of human crafted descriptors in an attempt to summarize current knowledge regarding miRNA:mRNA interactions, maintaining a bias towards properties associated with the miRNA seed region. Also, as knowledge has increased, so has the complexity of feature descriptors and consequently there is limited consistency amongst the different tools. Thus, researchers tend to use multiple prediction tools to adopt a “carpet bombing” approach to investigate target space, retaining only those targets that are common among a certain fraction of tools. This further biases predictions back towards the most conservative (i.e. canonical) targets.

In this study, we adopted a neutral approach towards the prediction process, avoiding incorporating any knowledge related to the targeting process. The performance gap between miRAW and the descriptor-based approaches suggests that current knowledge is still not sufficient to accurately capture all aspects of the miRNA targeting process. This is consistent with recent studies, e.g., [3], [7] and [31], which demonstrate that the whole miRNA can play a relevant role in many functional miRNA targets. Based on these findings, we took advantage of deep learning methodology to incorporate the whole miRNA sequence for target prediction. As deep learning has the capacity to automatically extract its own data feature descriptors, miRAW is not limited by the assumptions incorporated into current target prediction tools. Our experiments showed that miRAW consistently outperforms current techniques,

suggesting that the descriptors learned by the deep neural network are able to encode current knowledge and include additional yet to be understood information.

Moreover, we attempted to remove any preconceptions from the learning stage by including all miRNA and mRNA nucleotides as input to our model. The only knowledge we apply is during the selection of candidate targets where we implement a selection step to retain miRNA:mRNA pairs that have established binding within a relaxed seed region that spans nucleotides 1 through 10. Despite the application of this selection step, the entire miRNA:mRNA sequence is used as input to the deep learning model. This has the benefit of narrowing the search space while retaining a larger number of candidate targets including non-canonical target types. In an ideal scenario, with enough representative positive and negative data samples, the selection step could be skipped as a deep enough neural network should be able to map such information into its weights.

Relaxation of the seed region allows the consideration of both canonical and non-canonical targets, including the ones defined in recent studies that stated the importance of considering nucleotides beyond the 7th position [3, 8]. This also aligns with recent studies which investigated potential binding sites based on microarray expression data that indicate a significant role for miRNA nucleotide 9 [8] and structure studies [31] that demonstrate off-site targeting in the 3' region of the miRNA is achieved by a pivoting structural element, α helix-7, within the Ago2 protein that permits rapid making and breaking of miRNA:target base pairs in the 3' end of the seed region. This allows Ago2 to rapidly screen potential targets to dynamically search for non-canonical sites.

The impact of the candidate site selection model can be seen from the results for different CSSMs within the miRAW model. Conservative approaches (miRAW-Pita and miRAW-TS) presented slightly better accuracies than more relaxed approaches (miRAW-6-1:10, miRAW-7-1:10 and miRAW-7-2:10) but their predictions were heavily biased towards canonical sites. On the other hand, more relaxed models identified a higher number of potential MBSs following both canonical and non-canonical structures. For the latter, the higher number of identified sites generated higher numbers of false positives that decreased precision and specificity. This problem was addressed by post filtering sites with a high ΔG_{open} value, increasing accuracy, precision and specificity to levels analogous to the ones obtained by miRAW-Pita and miRAW-TS but with a broader spectrum of binding structures. The contrasting performance among miRAW-Pita, miRAW-TS and the different miRAW specific CSSMs can be understood by the way in which the methods filter the candidate targets. miRAW-Pita has a conservative approach that discards any site containing more than one mismatch within the seed region without considering further the remainder of the mature miRNA transcript. This enhances the reliability of the positive prediction, but at the cost of increasing the number of false negatives as non-canonical sites are discarded. At the other extreme, miRAW adopts a more open strategy to maximize the types of sites (both canonical and non-canonical) that are considered. This more accommodating approach allows the detection of more non-canonical sites, but with the consequence of an increased number of false positives. This argument is also consistent with the results observed for miRAW-TS, which has the most restrictive CSSM—small irregularities are permitted in the seed region but this requires compensatory pairing in the 3' end of the miRNA. The extended seed region permitted by miRAW leads to selection of positive sites with irregular bindings in the canonical seed region, supporting the argument that pairing beyond the seed region has a more important role. This is observed even with the miRAW-TS and miRAW-Pita CSSMs (which still feed the whole transcript sequences into the machine learning model) which obtain better results than their Pita and TargetScan counterparts.

As deep learning has the capacity to automatically extract its own data feature descriptors, by incorporating the entire miRNA and 3' UTR target region, miRAW is not limited by the assumptions incorporated into current target prediction tools. Our experiments showed that miRAW consistently outperforms current techniques, suggesting that the descriptors learned by the deep neural network are able to encode current knowledge and include additional yet to be understood information. Furthermore, as the amount of available target data increases, CSSM constraints can be relaxed which, in turn, will facilitate the discovery or disposal of additional non-canonical miRNA binding structures.

Another important task within this work was the processing of different data sources to transform them into suitable training, testing and evaluation datasets. For a ML classifier to learn the patterns needed to distinguish different classes it is necessary not only to have good quality training data but also to have a balanced number of instances for each class. We selected Diana TarBase and mirTarBase as our core data sources as they represented the most comprehensive set of evidence for miRNA:mRNA functional interactions, spanning a range of different experimental methods and providing multiple evidence for many interactions. However, for most of the validated experiments the databases do not provide exact details of the target site for the supported interactions. To obtain reliable binding site information we processed and integrated PAR-CLIP and CLASH datasets -which reveal information regarding binding sites and binding structures but not regarding functionality- and cross-referenced them with TarBase and mirTarBase. Generally, there are many resources for experimentally verified positive data but access to experimentally verified negative data is more scarce. Some approaches solve this problem by generating synthetic negative examples, but these may not accurately represent real negative targets and are particularly inappropriate for the DL approach we implemented here. Thus, we generated our negative data by carefully selecting sites that had both the potential of providing stable miRNA binding and were associated with an experimentally verified negative target.

Despite the enhanced performance demonstrated by miRAW, it is prudent to consider some of the potential limitations of automatic feature learning approaches such as DL. The hierarchical and opaque internal data representation learned by a neural network can be difficult to interpret and map into human interpretable knowledge, hence it is not possible to directly identify the features that determine the classification. To address this issue, studies on neural networks knowledge transferability [47] and weight constraining [48] may aid the interpretation process, which is the next logical step in our work. Another issue is incorporating knowledge that is external to the miRNA:MBS duplex transcripts. For example, some of the broadly incorporated features in current prediction tools, such as interspecies conservation or site accessibility energy, cannot be inferred by deep learning as these features are built upon external information not contained in the miRNA:MBS duplex transcript. In miRAW this is addressed by applying *a posteriori* filtering that refines the outcomes of the neural network using external information. As a first test of such *a posteriori* filtering, the ΔG_{open} filter proved to be effective at narrowing the search space in CSSMs possessing an elevated false positive probability (caused by the high number of identified MBSs). An analysis of the ΔG_{open} energy distribution showed significant differences between canonical and non-canonical sites, and between true positive and false positive predictions. Nevertheless these differences were not enough to discriminate between these categories, indicating that ΔG_{open} energy is relevant in the targeting process but is not a sufficient indicator to identify target classes. Regarding interspecies conservation, the fact that miRAW, regardless of the CSSM, outperformed current methods without considering interspecies conservation information suggests that this has limited applicability as a descriptor for miRNA sites. This is also supported by the accuracy and F1-Score results obtained by TargetScan NC, which outperformed the ones obtained by

TargetScan C. This is also consistent with research from a recent study which found that inter-species preservation filtering can be disregarded for functionally important non-canonical target sites [2].

Another consideration is the combinatorial effect of multiple but weak binding sites which, acting in concert, can have significant functional roles [49]. Consistent with other target prediction tools, miRAW's binding site centric approach cannot evaluate the joint regulatory effect of multiple potential weak target sites in a mRNA as sites are analyzed independently. Nevertheless, we observe that many miRNA:mRNA duplexes where the CSSM detected a high number of potential MBSs tended to be classified as functional. Although in many cases the classification might simply be a reflection of the increased probability of the ANN producing a false positive, it could also be a consequence of the ANN recognizing features associated with cumulatively strong targeting as proposed by [49]. Similarly, some of the false positive predictions obtained by the non-canonical CSSMs without Δ_{open} filtering might correspond to weak targets without clear regulatory effects. This hypothesis could be explored in miRAW by updating the ANN in order to add a third class (negative, positive and weak) and by transforming the prediction aggregation Eq (5) into a cumulative function. Nevertheless, this approach would require the construction of a training dataset containing enough weak target examples, a challenging task considering that most existing miRNA target resources address the targeting from a binary perspective.

The work presented in this paper focused on the prediction of human miRNA targets, nonetheless the methodology can be readily applied to build target prediction models in other species. Bearing in mind that data availability is crucial for building reliable machine learning classifiers, a logical next step is to implement a target prediction model for mouse. Beyond this, the presented approach will benefit from further experimental studies that will serve to validate new predictions obtained by miRAW but also to generate new experimental data to reliably expand the training of the model. Additionally, considering the *a posteriori* filtering step can be applied in retrospective way, it can be used to re-investigate the relevance of some miRNA target descriptors, such as interspecies conservation. Finally, as miRAW considers the whole miRNA:mRNA transcript for its predictions, this also allows the use of miRAW to assess the impact of target site mutations and miRNA isoform variations on the targeting process, which have been shown to have functional roles and characteristic populations that can vary amongst different conditions.

Supporting information

S1 File. Contains supporting Figures A to H and supporting Tables A to D.
(PDF)

S2 File. Contains a description of the different data sources used to construct miRAW training and testing datasets.
(XLSX)

S3 File. Contains P-values corresponding to the statistically significant differences obtained when comparing different miRAW configurations and different state-of-the-art target prediction tools. P-values correspond to the Wilcoxon Signed Rank test and to a Paired Two-sample T-Test.
(XLS)

Acknowledgments

We would like to thank Fatima Heinicke for invaluable comments and discussion, and Jan Hawkins for useful feedback during the preparation of the manuscript.

Author Contributions

Conceptualization: Albert Pla.

Data curation: Albert Pla, Xiangfu Zhong.

Formal analysis: Albert Pla, Simon Rayner.

Funding acquisition: Albert Pla, Simon Rayner.

Investigation: Albert Pla, Xiangfu Zhong, Simon Rayner.

Methodology: Albert Pla, Xiangfu Zhong, Simon Rayner.

Project administration: Albert Pla.

Resources: Albert Pla, Xiangfu Zhong, Simon Rayner.

Software: Albert Pla.

Supervision: Simon Rayner.

Validation: Albert Pla.

Visualization: Albert Pla.

Writing – original draft: Albert Pla, Simon Rayner.

Writing – review & editing: Albert Pla, Xiangfu Zhong, Simon Rayner.

References

1. Brennecke J, Stark A, Russell RB, Cohen SM. Principles of microRNA–target recognition. *PLoS Biol.* 2005; 3(3):e85. <https://doi.org/10.1371/journal.pbio.0030085> PMID: 15723116
2. Grosswendt S, Filipchuk A, Manzano M, Klironomos F, Schilling M, Herzog M, et al. Unambiguous identification of miRNA: target site interactions by different types of ligation reactions. *Molecular cell.* 2014; 54(6):1042–1054. <https://doi.org/10.1016/j.molcel.2014.03.049> PMID: 24857550
3. Moore MJ, Scheel TK, Luna JM, Park CY, Fak JJ, Nishiuchi E, et al. miRNA-target chimeras reveal miRNA 3′ [prime]-end pairing as a major determinant of Argonaute target specificity. *Nature communications.* 2015; 6. <https://doi.org/10.1038/ncomms9864>
4. Seok H, Ham J, Jang ES, Chi SW. MicroRNA Target Recognition: Insights from Transcriptome-Wide Non-Canonical Interactions. *Molecules and cells.* 2016; 39(5):375. <https://doi.org/10.14348/molcells.2016.0013> PMID: 27117456
5. Schirle NT, Sheu-Gruttadauria J, MacRae IJ. Structural basis for microRNA targeting. *Science.* 2014; 346(6209):608–613. <https://doi.org/10.1126/science.1258040> PMID: 25359968
6. Agarwal V, Bell GW, Nam JW, Bartel DP. Predicting effective microRNA target sites in mammalian mRNAs. *Elife.* 2015; 4:e05005. <https://doi.org/10.7554/eLife.05005>
7. Broughton JP, Lovci MT, Huang JL, Yeo GW, Pasquinelli AE. Pairing beyond the seed supports microRNA targeting specificity. *Molecular Cell.* 2016; 64(2):320–333. <https://doi.org/10.1016/j.molcel.2016.09.004> PMID: 27720646
8. Kim D, Sung YM, Park J, Kim S, Kim J, Park J, et al. General rules for functional microRNA targeting. *Nature Genetics.* 2016. <https://doi.org/10.1038/ng.3694>
9. LeCun Y, Bengio Y, Hinton G. Deep learning. *Nature.* 2015; 521(7553):436–444. <https://doi.org/10.1038/nature14539> PMID: 26017442
10. Krizhevsky A, Sutskever I, Hinton GE. Imagenet classification with deep convolutional neural networks. In: *Advances in neural information processing systems*; 2012. p. 1097–1105.

11. Collobert R, Weston J. A unified architecture for natural language processing: Deep neural networks with multitask learning. In: Proceedings of the 25th international conference on Machine learning. ACM; 2008. p. 160–167.
12. Graves A, Mohamed Ar, Hinton G. Speech recognition with deep recurrent neural networks. In: 2013 IEEE international conference on acoustics, speech and signal processing. IEEE; 2013. p. 6645–6649.
13. Alipanahi B, Delong A, Weirauch MT, Frey BJ. Predicting the sequence specificities of DNA-and RNA-binding proteins by deep learning. *Nature biotechnology*. 2015. <https://doi.org/10.1038/nbt.3300> PMID: [26213851](https://pubmed.ncbi.nlm.nih.gov/26213851/)
14. Chen Y, Li Y, Narayan R, Subramanian A, Xie X. Gene expression inference with deep learning. *Bioinformatics*. 2016; p. btw074.
15. Singh R, Lanchantin J, Robins G, Qi Y. DeepChrome: deep-learning for predicting gene expression from histone modifications. *Bioinformatics*. 2016; 32(17):i639–i648. <https://doi.org/10.1093/bioinformatics/btw427> PMID: [27587684](https://pubmed.ncbi.nlm.nih.gov/27587684/)
16. Cheng S, Guo M, Wang C, Liu X, Liu Y, Wu X. MiRTDL: a deep learning approach for miRNA target prediction. *IEEE/ACM Transactions on Computational Biology and Bioinformatics*. 2015; p. 1–1.
17. Lee B, Baek J, Park S, Yoon S. deepTarget: end-to-end learning framework for microRNA target prediction using deep recurrent neural networks. *arXiv preprint arXiv:160309123*. 2016.
18. Nielsen M. A visual Proof that neural nets can compute any function. In: *Artificial Neural Networks and Deep Learning*. Determination Press; 2016.
19. Hinton GE, Salakhutdinov RR. Reducing the dimensionality of data with neural networks. *Science*. 2006; 313(5786):504–507. <https://doi.org/10.1126/science.1127647> PMID: [16873662](https://pubmed.ncbi.nlm.nih.gov/16873662/)
20. Chou CH, Chang NW, Shrestha S, Hsu SD, Lin YL, Lee WH, et al. miRTarBase 2016: updates to the experimentally validated miRNA-target interactions database. *Nucleic acids research*. 2016; 44(D1): D239–D247. <https://doi.org/10.1093/nar/gkv1258> PMID: [26590260](https://pubmed.ncbi.nlm.nih.gov/26590260/)
21. Vlachos IS, Paraskevopoulou MD, Karagkouni D, Georgakilas G, Vergoulis T, Kanellos I, et al. DIANA-TarBase v7. 0: indexing more than half a million experimentally supported miRNA: mRNA interactions. *Nucleic acids research*. 2015; 43(D1):D153–D159. <https://doi.org/10.1093/nar/gku1215> PMID: [25416803](https://pubmed.ncbi.nlm.nih.gov/25416803/)
22. Dweep H, Gretz N. miRWalk2. 0: a comprehensive atlas of microRNA-target interactions. *Nature methods*. 2015; 12(8):697–697. <https://doi.org/10.1038/nmeth.3485> PMID: [26226356](https://pubmed.ncbi.nlm.nih.gov/26226356/)
23. Kozomara A, Griffiths-Jones S. miRBase: annotating high confidence microRNAs using deep sequencing data. *Nucleic acids research*. 2014; 42(D1):D68–D73. <https://doi.org/10.1093/nar/gkt1181> PMID: [24275495](https://pubmed.ncbi.nlm.nih.gov/24275495/)
24. Aken BL, Ayling S, Barrell D, Clarke L, Curwen V, Fairley S, et al. The Ensembl gene annotation system. *Database*. 2016; 2016:baw093. <https://doi.org/10.1093/database/baw093> PMID: [27337980](https://pubmed.ncbi.nlm.nih.gov/27337980/)
25. Helwak A, Kudla G, Dudnakova T, Tollervey D. Mapping the human miRNA interactome by CLASH reveals frequent noncanonical binding. *Cell*. 2013; 153(3):654–665. <https://doi.org/10.1016/j.cell.2013.03.043> PMID: [23622248](https://pubmed.ncbi.nlm.nih.gov/23622248/)
26. Lorenz R, Bernhart SH, Zu Siederdisen CH, Tafer H, Flamm C, Stadler PF, et al. ViennaRNA Package 2.0. *Algorithms for Molecular Biology*. 2011; 6(1):1. <https://doi.org/10.1186/1748-7188-6-26>
27. Maragkakis M, Alexiou P, Papadopoulos GL, Reczko M, Dalamagas T, Giannopoulos G, et al. Accurate microRNA target prediction correlates with protein repression levels. *BMC bioinformatics*. 2009; 10(1): 295. <https://doi.org/10.1186/1471-2105-10-295> PMID: [19765283](https://pubmed.ncbi.nlm.nih.gov/19765283/)
28. Zou Q, Mao Y, Hu L, Wu Y, Ji Z. miRClassify: an advanced web server for miRNA family classification and annotation. *Computers in biology and medicine*. 2014; 45:157–160. <https://doi.org/10.1016/j.combiomed.2013.12.007> PMID: [24480175](https://pubmed.ncbi.nlm.nih.gov/24480175/)
29. Garcia DM, Baek D, Shin C, Bell GW, Grimson A, Bartel DP. Weak seed-pairing stability and high target-site abundance decrease the proficiency of Isy-6 and other microRNAs. *Nature Structural and Molecular Biology*. 2011; 18(10):1139. <https://doi.org/10.1038/nsmb.2115> PMID: [21909094](https://pubmed.ncbi.nlm.nih.gov/21909094/)
30. Grimson A, Farh KKH, Johnston WK, Garrett-Engle P, Lim LP, Bartel DP. MicroRNA targeting specificity in mammals: determinants beyond seed pairing. *Molecular cell*. 2007; 27(1):91–105. <https://doi.org/10.1016/j.molcel.2007.06.017> PMID: [17612493](https://pubmed.ncbi.nlm.nih.gov/17612493/)
31. Klum SM, Chandradoss SD, Schirle NT, Joo C, MacRae IJ. Helix-7 in Argonaute2 shapes the microRNA seed region for rapid target recognition. *The EMBO Journal*. 2017; p. e201796474.
32. Lewis BP, Burge CB, Bartel DP. Conserved seed pairing, often flanked by adenosines, indicates that thousands of human genes are microRNA targets. *cell*. 2005; 120(1):15–20. <https://doi.org/10.1016/j.cell.2004.12.035> PMID: [15652477](https://pubmed.ncbi.nlm.nih.gov/15652477/)

33. Dror I, Golan T, Levy C, Rohs R, Mandel-Gutfreund Y. A widespread role of the motif environment in transcription factor binding across diverse protein families. *Genome research*. 2015; 25(9):1268–1280. <https://doi.org/10.1101/gr.184671.114> PMID: 26160164
34. Karsoliya S. Approximating number of hidden layer neurons in multiple hidden layer BPNN architecture. *International Journal of Engineering Trends and Technology*. 2012; 3(6):713–717.
35. Lai EC. Predicting and validating microRNA targets. *Genome biology*. 2004; 5(9):1. <https://doi.org/10.1186/gb-2004-5-9-115>
36. Kertesz M, Iovino N, Unnerstall U, Gaul U, Segal E. The role of site accessibility in microRNA target recognition. *Nature genetics*. 2007; 39(10):1278–1284. <https://doi.org/10.1038/ng2135> PMID: 17893677
37. Vejnar CE, Blum M, Zdobnov EM. miRmap web: comprehensive microRNA target prediction online. *Nucleic acids research*. 2013; 41(W1):W165–W168. <https://doi.org/10.1093/nar/gkt430> PMID: 23716633
38. Marín RM, Vaniček J. Efficient use of accessibility in microRNA target prediction. *Nucleic acids research*. 2010; 39(1):19–29. <https://doi.org/10.1093/nar/gkq768> PMID: 20805242
39. Lange SJ, Maticzka D, Möhl M, Gagnon JN, Brown CM, Backofen R. Global or local? Predicting secondary structure and accessibility in mRNAs. *Nucleic acids research*. 2012; 40(12):5215–5226. <https://doi.org/10.1093/nar/gks181> PMID: 22373926
40. Deeplearning4j Development T. Deeplearning4j: Open-source distributed deep learning for the JVM. Apache Software Foundation License. 2016; 2.
41. Paraskevopoulou MD, Georgakilas G, Kostoulas N, Vlachos IS, Vergoulis T, Reczko M, et al. DIANA-microT web server v5.0: service integration into miRNA functional analysis workflows. *Nucleic acids research*. 2013; 41(W1):W169–W173. <https://doi.org/10.1093/nar/gkt393> PMID: 23680784
42. Betel D, Koppal A, Agius P, Sander C, Leslie C. Comprehensive modeling of microRNA targets predicts functional non-conserved and non-canonical sites. *Genome biology*. 2010; 11(8):R90. <https://doi.org/10.1186/gb-2010-11-8-r90> PMID: 20799968
43. Gumienny R, Zavolan M. Accurate transcriptome-wide prediction of microRNA targets and small interfering RNA off-targets with MIRZA-G. *Nucleic acids research*. 2015; 43(3):1380–1391. <https://doi.org/10.1093/nar/gkv050> PMID: 25628353
44. Šulc M, Marín RM, Robins HS, Vaniček J. PACCMIT/PACCMIT-CDS: identifying microRNA targets in 3' UTRs and coding sequences. *Nucleic acids research*. 2015; 43(W1):W474–W479. <https://doi.org/10.1093/nar/gkv457> PMID: 25948580
45. Wong N, Wang X. miRDB: an online resource for microRNA target prediction and functional annotations. *Nucleic acids research*. 2014; p. gku1104.
46. Robin X, Turck N, Hainard A, Tiberti N, Lisacek F, Sanchez JC, et al. pROC: an open-source package for R and S+ to analyze and compare ROC curves. *BMC bioinformatics*. 2011; 12(1):77. <https://doi.org/10.1186/1471-2105-12-77> PMID: 21414208
47. Yosinski J, Clune J, Bengio Y, Lipson H. How transferable are features in deep neural networks? In: *Advances in neural information processing systems*; 2014. p. 3320–3328.
48. Chorowski J, Zurada JM. Learning understandable neural networks with nonnegative weight constraints. *IEEE transactions on neural networks and learning systems*. 2015; 26(1):62–69. <https://doi.org/10.1109/TNNLS.2014.2310059> PMID: 25532156
49. Zhao Y, Shen X, Tang T, Wu CI. Weak Regulation of Many Targets Is Cumulatively Powerful—An Evolutionary Perspective on microRNA Functionality. *Molecular Biology and Evolution*. 2017; p. msx260.