

RESEARCH ARTICLE

Method for the simulation of blood platelet shape and its evolution during activation

Alexander E. Moskalensky^{1,2*}, Maxim A. Yurkin^{1,2}, Artem R. Muliukov^{1,2}, Alena L. Litvinenko^{1,2}, Vyacheslav M. Nekrasov^{1,2}, Andrei V. Chernyshev^{1,2}, Valeri P. Maltsev^{1,2,3}

1 Novosibirsk State University, Novosibirsk, Russia, **2** Voevodsky Institute of Chemical Kinetics and Combustion SB RAS, Novosibirsk, Russia, **3** Novosibirsk State Medical University, Novosibirsk, Russia

* a.mosk@nsu.ru



Abstract

We present a simple physically based quantitative model of blood platelet shape and its evolution during agonist-induced activation. The model is based on the consideration of two major cytoskeletal elements: the marginal band of microtubules and the submembrane cortex. Mathematically, we consider the problem of minimization of surface area constrained to confine the marginal band and a certain cellular volume. For resting platelets, the marginal band appears as a peripheral ring, allowing for the analytical solution of the minimization problem. Upon activation, the marginal band coils out of plane and forms 3D convoluted structure. We show that its shape is well approximated by an overcurved circle, a mathematical concept of closed curve with constant excessive curvature. Possible mechanisms leading to such marginal band coiling are discussed, resulting in simple parametric expression for the marginal band shape during platelet activation. The excessive curvature of marginal band is a convenient state variable which tracks the progress of activation. The cell surface is determined using numerical optimization. The shapes are strictly mathematically defined by only three parameters and show good agreement with literature data. They can be utilized in simulation of platelets interaction with different physical fields, e.g. for the description of hydrodynamic and mechanical properties of platelets, leading to better understanding of platelets margination and adhesion and thrombus formation in blood flow. It would also facilitate precise characterization of platelets in clinical diagnosis, where a novel optical model is needed for the correct solution of inverse light-scattering problem.

OPEN ACCESS

Citation: Moskalensky AE, Yurkin MA, Muliukov AR, Litvinenko AL, Nekrasov VM, Chernyshev AV, et al. (2018) Method for the simulation of blood platelet shape and its evolution during activation. *PLoS Comput Biol* 14(3): e1005899. <https://doi.org/10.1371/journal.pcbi.1005899>

Editor: Scott L. Diamond, University of Pennsylvania, UNITED STATES

Received: September 4, 2017

Accepted: November 23, 2017

Published: March 8, 2018

Copyright: © 2018 Moskalensky et al. This is an open access article distributed under the terms of the [Creative Commons Attribution License](https://creativecommons.org/licenses/by/4.0/), which permits unrestricted use, distribution, and reproduction in any medium, provided the original author and source are credited.

Data Availability Statement: All relevant data are within the paper and its Supporting Information files.

Funding: The reported study was funded by Russian Foundation for Basic Research (<http://www.rfbr.ru/rffi/eng>) according to the research project № 16-34-00300 (A.E.M is the grant recipient). The funders had no role in study design, data collection and analysis, decision to publish, or preparation of the manuscript.

Author summary

Blood platelets are the second most numerous component of blood after red blood cells. Their main function is to stop bleeding upon vessel wall injury. Contact with foreign substances, normally absent inside the bloodstream, leads to platelet activation. After this, platelets adhere to the damaged surface and to each other, finally forming a mechanical plug. Activation is very fast and complex process, and is accompanied by dramatic change of cell shape. This morphological alteration may be vital for the prevention of blood loss. However, there is no complete understanding of its significance, maybe because the

Competing interests: The authors have declared that no competing interests exist.

quantitative description of the platelet shape during activation is absent. Here, we describe the shape change based on the physical consideration of the platelet cytoskeleton. We propose the formulation of mathematical problem and its solution, which allows one to easily simulate a wide class of shapes for both resting and activated cells. These models are in a good agreement with platelet images observed in numerous experiments published elsewhere. They may be used to simulate the shape change and hence the influence of activation on hydrodynamic, mechanical and optical properties of platelets. As a result, novel diagnostic and therapeutic strategies and clinical implications may be obtained.

This is a PLoS Computational Biology Methods paper.

Introduction

Human blood platelets are the paramount element of hemostasis and also contribute to a variety of other normal and pathological processes, including thrombosis, inflammation, and tumor development. These corpuscles attracted attention of early microscopists by the outstanding capacity to change physical properties in response to vessel wall injury or foreign substances [1]. The first step in reaction to such stimuli is platelet activation, which comprises a series of prothrombotic events, triggered by the increase of intracellular calcium [2–4]. Among them, morphological “disk-to-sphere” transformation is the earliest and the most notable effect. Dramatic shape change of platelet from discoid (resting) to rounded with pseudopodia (activated) occurs within seconds and leads to the alteration of optical, hydrodynamic, and mechanical properties of cells.

Quantitative description of the platelet shape and its change during activation is of great importance for various related fields. For instance, the platelet shape change affect the traces of light transmission aggregometry, a “gold standard” technique in clinical laboratories [5], and should be considered for the correct interpretation of test results [6,7]. Novel optical methods for single-cell morphological analysis [8–11] rely on the appropriate optical model for the solution of the inverse light-scattering problem. Correct description of platelet geometry is also vital for the simulation of blood cells motion in vessels [12–16], especially platelets margination and adhesion under flow [17,18]. An oblate spheroid is commonly used to approximate the platelet shape in optical and hydrodynamic simulations. This model accurately captures cell properties in a limited number of cases. Even if the influence of pseudopodia is not significant, which is the case for optical computations [19], the cell body itself may have a complicated shape. Electron microscopy images of platelets reveal the presence of cells lacking the axial symmetry [20]. While some of them only slightly deviate from the classic discoid shape, the others show large distortions, such as an overall bending. These curved cells have been thought of as an artifact for decades, but their existence is consistent with recent studies of platelet cytoskeleton [21]. There is an urgent need for a shape model which accounts for platelet microanatomical structures and captures a wide class of morphologies, including non-axisymmetric ones. Consideration of cytoskeletal elements underlying the platelet morphology is necessary for the understanding of mechanical properties of platelets (e.g., deformability), which is a topic of active experimental and computational research [22–24]. However, the model should be simple (controlled by a few tunable parameters) to facilitate the advancements in the above-mentioned fields.

Resting platelet possesses the peripheral ring (marginal band) of microtubules, which supports cell discoid shape [25–27]. Upon activation, it coils to form a saddle-like structure, which was recently observed and regarded as the principal mechanistic feature underlying cellular shape change [28]. However, the specific cause of this coiling may be related to different mechanisms (which we discuss in a specific section). Given this uncertainty, direct simulation of marginal band coiling seems to be impractical.

Instead, in this paper we propose to model coiled marginal band using a mathematical concept of the overcurved circle [29]. Such structures approximate a wide class of coiled rings formed in a variety of physical processes. Its geometry is controlled by a single parameter called the overcurvature, which increases from unity as the circle coils out of plane. We show a remarkable similarity of experimental images (published elsewhere) and the overcurved circles, which allows us to consider the marginal band overcurvature as a state variable of activation. Next, we model the outer cell membrane and the submembrane cortex as an elastic surface with constant mean curvature (or, equivalently, minimal surface area), which rests on the marginal-band skeleton and embraces a prescribed cell volume. The particular surface configuration is determined by the numerical optimization. The major advantage of this platelet shape model is that it is defined by only four parameters (or three up to the scale): length, overcurvature, thickness of the marginal band, and the cell volume. Small number of parameters is vital for massive simulations and especially for inverse problems solutions. At the same time the model encompasses both classical discoid morphology (overcurvature = 1), and novel class of non-spheroidal, highly curved or concave shapes. We compare the simulation results with previously published platelets images and show that the new model constitutes a major improvement over the spheroidal model, still preserving reasonable simplicity. Finally, we discuss important biological and biophysical insights into platelets behavior and predict cell morphologies that have not yet been reported.

Results

Overcurvature describes the marginal band coiling during platelet activation

Mouthuy et al [29] showed that overcurved circles are formed in a variety of physical conditions, from curved origami to foldable tents. Surprisingly, these structures approximate marginal bands of activated platelets as well. In Fig 1A, the images of coiled marginal bands of platelets under different stimuli are reproduced from [28]. We show direct one-to-one comparison of experimental images with the overcurved circles, which manifests the remarkable agreement. An overcurvature O_p is listed near each plotted circle.

The overcurvature is the ratio between the circle's curvature and the curvature of the same-length planar ring. As O_p increases from 1, the circle comes out of plane and adopts more and more twisted three-dimensional shape (Fig 1B). A great advantage of the overcurved circles is a simple one-parametric analytical representation. They are also invariant to the 90° rotation around the z -axis combined with the reflection with respect to the xy -plane (D_{2d} symmetry). Possible mechanisms leading to the formation of this particular structure in platelets are discussed in the special section, together with the mechanisms causing deviations (including the tensioned submembrane cortex).

In case of blood platelets, especially discoid cells, the thickness of marginal band can not be neglected. Further we model it as the tube of circular cross-section, whose central line forms an overcurved circle. Circular cross-section is consistent with published experimental data, although there may be reasons for compression and extension in certain directions. Two-

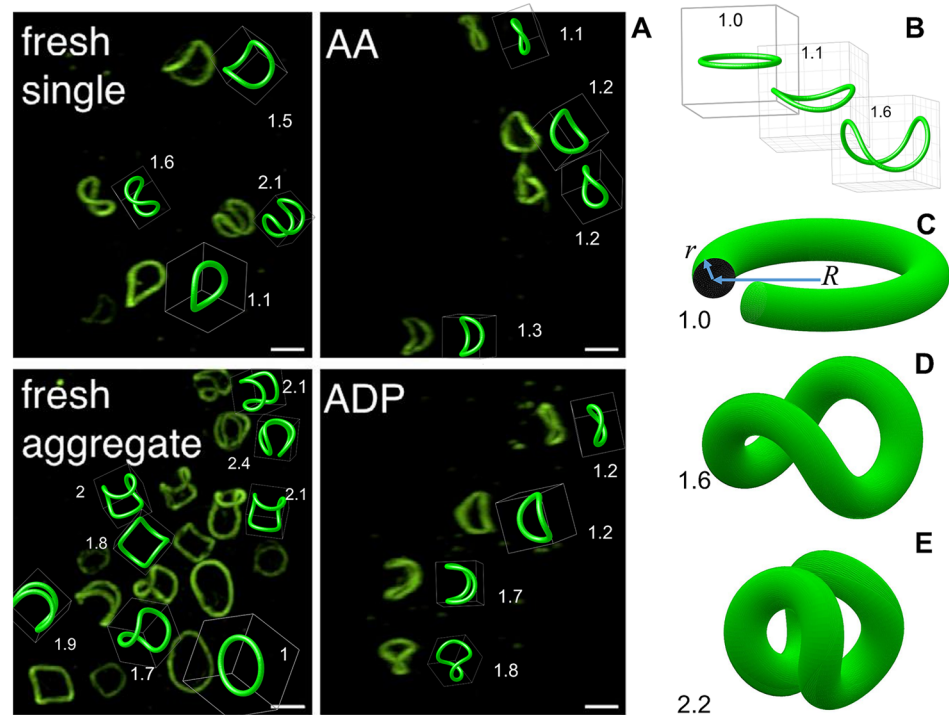


Fig 1. (A) One-to-one comparison of experimental images of coiled platelets marginal band (*reused with permissions from: Diagouraga et al. Journal of Cell Biology. 204:177–185. DOI: 10.1083/jcb.201306085*) and manually-fitted overcurved circles. Overcurvature is listed near each plotted curve. (B) Examples of the overcurved circles. (C) Illustration of circular tube modeling the initial flat peripheral ring of microtubules. (D,E) Models of coiled marginal band in platelets with different overcurvature and non-zero thickness.

<https://doi.org/10.1371/journal.pcbi.1005899.g001>

parametric expressions for the tube surface are derived below, and several examples are shown in Fig 1C–1E. The geometry (relative shape) of platelet marginal band is therefore controlled by two parameters—the overcurvature O_p and the relative tube radius r/R (thickness); the radius of the ring in the initial (planar) state R is a conventional scaling parameter.

Blood platelet outer shell as a minimal surface

First we note that the minimization of surface energy has been used for a long time to describe the biconcave shape of red blood cells (RBCs), the most studied element of blood [30,31]. Generally, this energy consists of three parts: expansion, shear, and bending [32]. The RBC surface comprises relatively weak spectrin cytoskeleton and the lipid bilayer, whose expansion or compression requires unrealistically high energy. Minimization of membrane bending energy alone at a constant area provides the shape which agrees well with experiments, at least in case of native, non-deformed RBCs [33].

By contrast, blood platelets have strong actomyosin submembrane cortex [27]. The filaments pull together nearby points on cell membrane and make it wrinkled at small scales [34]. In other words, the expansion energy is associated with the cortex, which has equilibrium surface area significantly lower than that allowed by the fixed volume. And this expansion energy is assumed to be much larger than bending energy of both the lipid bilayer (including wrinkles) and the cortex. Therefore, the description of a platelet outer shell (membrane + submembrane cortex) as a surface which tends to minimize its area is a reasonable approximation,

that have been used in biophysical modeling of blood platelets [35]. We also do not account for the rigid cytoplasmic actin network, which stabilizes resting platelet shape and rapidly disassembles during activation [36]. Thus, the surface should cover the coiled marginal band and confine certain cellular volume, while minimizing the area. Such mathematical problem has not been considered elsewhere; however, one would expect that one part of surface would be attached to the marginal band and the other would be of constant mean curvature. The only difficulty is to find a boundary where the surface detaches from the marginal band. In the section “Cell surface of resting platelets”, we give a solution for axially symmetrical problem ($O_p = 1$) and provide the boundary conditions for the general case. We show that the contact between attached and free parts of the surface should be smooth. These considerations were used for the following simulation of platelets morphology, details of which are described in the subsequent section. Further we show attached parts of the surface in green and free surface in red.

Platelet activation as the movement on the phase diagram

Marginal band in resting platelets appears as a planar ring of microtubules. In our model, it corresponds to a ring torus, characterized by $O_p = 1$, ring radius R , and the relative tube radius $r/R < 1$. The overall morphology preserves axial symmetry; in this case, the analytic solution of the surface optimization problem is possible. The resting platelet is described as the torus (marginal band) with two spherical caps covering the torus hole. Possible shapes for $R = 1$ and $r/R = 0.2$ are shown in Area I of Fig 2.

In this figure a phase diagram of possible platelets morphologies is shown in the coordinates of overcurvature O_p and the dimensionless volume $v = V/R^3$, while marginal band thickness r/R is fixed to 0.2. Dark gray area on the bottom represents volumes less than that of torus; if the cell volume v is slightly above, it adopts biconcave shape, which is indeed rarely seen for platelets (see e.g. Fig. 2A in [37]). As the volume increases, caps change from inward to outward, and the cell becomes discoid and then biconvex, which corresponds to the classical platelets appearance. Further cell inflation leads to the formation of nearly spherical shapes, that are not characteristic for intact platelets, but correspond to cells after osmotic swelling [38]. Finally, the cell volume hits the boundary of area III, where it is larger than that of the sphere circumscribing the marginal band. In this case, the marginal band no longer stretches the membrane, and the cell adopts spherical shape. Hypothetically, the uneven distribution of submembrane microfilaments may cause certain regions of surface to bulge and form protrusions like pseudopodia or lamellopodia.

During activation, marginal band of platelets may alter its length and thickness, according to Diagouraga et al. [28]. For the simplicity, we assume that the relative thickness of marginal band $r/R = 0.2$ holds in this process. Activation begins with the rapid out-of-plane buckling of the marginal band, resulting in jump from area I to II in Fig 2. Area II consists of platelet shapes with $O_p > 1$. Note the unusual D_{2d} symmetry of shapes, inherited from the overcurved circles. The rightward movement on the phase diagram reflects the degree of marginal band coiling and hence the progression of activation. The cell volume may also alter upon this movement, but there is no agreement on this topic in the literature. In the region of small v cell surfaces preserve concave appearance, and such morphologies indeed present in experiments, see e.g. Fig. 2a in [20] and Fig. 2c in [21]. Larger cells with convex or intermediate appearance can be found in a number of recent studies, see e.g. Fig. 2A in [28] and Fig. 7A in [39]. Structures with larger values of O_p , characterized by self-contact or self-intersection, have not been encountered among platelets. While self-intersection may take place for the mathematical concept of overcurved ring, it is physically impossible for the marginal band, given its

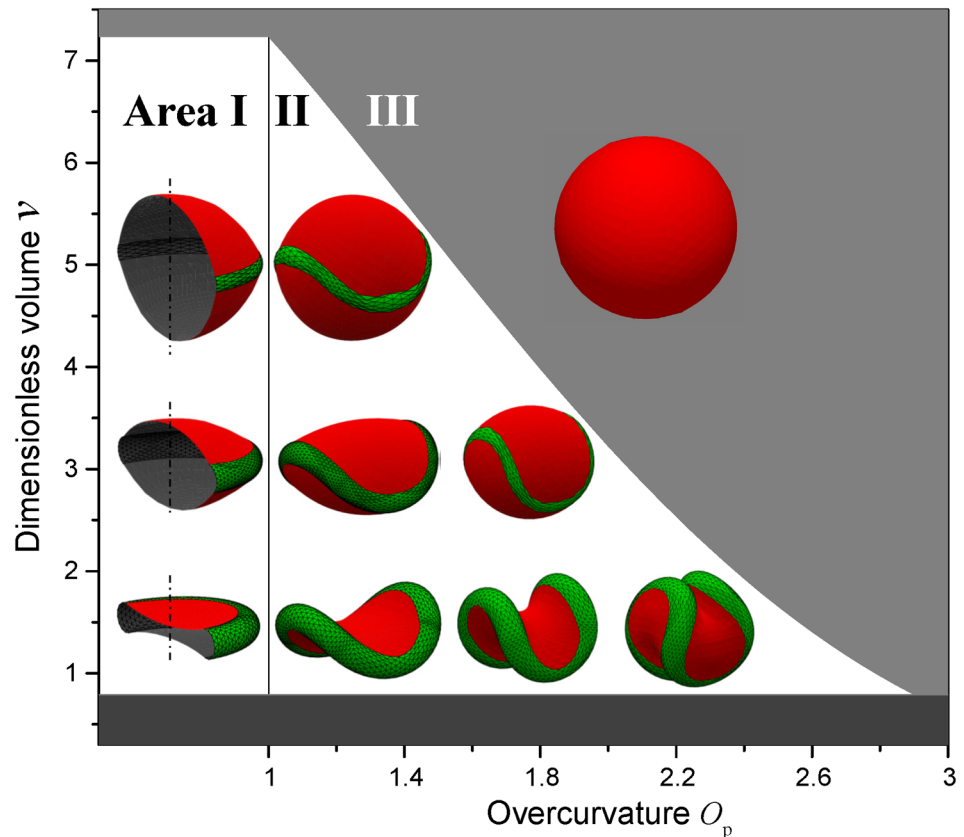


Fig 2. Overcurvature (O_p)–Dimensionless volume (v) phase diagram of platelets model morphologies. Area I corresponds to resting platelets with overcurvature = 1; Area II stands for activated platelets (hypothetically reversible activation); Area III is where platelets become spheroid (irreversible activation).

<https://doi.org/10.1371/journal.pcbi.1005899.g002>

non-negligible thickness. Therefore, the case of $O_p > 2.2-2.4$ ceases to describe platelet structure, and we do not consider such values in the present paper. However, self-intersecting structures were observed in invertebrate erythrocytes, which also have marginal band and change morphology from discoid to rounded upon blood withdrawal [40]. These cells are much larger than human platelets and have much smaller relative thickness of marginal band. Note also that the mathematical upper limit of $O_p = 3$ corresponds to the planar triple-folded ring, which can be coiled again to make a new overcurved circle.

The trajectories of platelets on Fig 2 during activation are not necessarily horizontal since the cell volume (and marginal band length) can vary. Nevertheless, the increase of overcurvature leads to rapid decrease of marginal band dimensions, i.e., of the volume of the circumscribing sphere. Eventually it becomes smaller than the cell volume V , and platelet proceeds to the zone III. The marginal band no longer stretches the membrane, which may lead to the detachment and disorganization of microtubules constituting the irreversible activation. In the case of weak stimulus, platelet trajectory reverses before the area III, following the return of intracellular calcium concentration to the baseline. This simple physical framework for reversible/irreversible activation may shed light on the platelet decision-making mechanisms [41]. However, the relationship between the intracellular calcium concentration and the

overcurvature of marginal band is an important topic for future research. Our model of platelet activation is animated in the [S1 Movie](#) including the stages of marginal band bending and cell spherizing, after which pseudopodia extrusion can be additionally simulated (please see below for details). In this video the cell volume is constant.

Discussion

Mechanisms of marginal band coiling

The marginal band coiling implies the action of forces. Mechanical work of these forces is stored as a bending energy of microtubules in a bundle, which is proportional to the local squared curvature. As a natural first approximation, we assume that the amount of stored energy per unit length should not vary significantly, which implies nearly constant curvature of the coiled marginal band. However, only detailed considerations of possible mechanisms can prove this hypothesis.

The platelet cytoskeleton comprises the following major elements: marginal band of microtubules, submembrane cortex, actin filaments and the molecular motors associated with microtubules. It is widely accepted to attribute marginal band coiling solely to the influence of cortical tension. However, platelet activation affects every cytoskeletal subsystem in various ways, and each of them can contribute to the shape change:

- The increase of Ca^{2+} concentration shifts the balance of antagonistic molecular motors dynein and kinesin [42,43], which causes relative sliding of microtubules in the marginal band. This may lead to the internal stress in the bundle and hence the excessive curvature.
- The same motors, anchored outside the marginal band, could force it to elongate and rest against the submembrane cortex [28].
- Ca^{2+} may directly cause the depolymerization of tubulin [44,45] and thus affect the rigidity of the microtubules ring. Early studies revealed the transient partial depolymerization of tubulin during shape change [46,47]. Microtubules disassembly is also relevant for cold-induced shape change [48,49].
- Calcium-independent, Rho-kinase mediated pathway contribute to the maintenance of rounded cell shape, probably also by the depolymerization of tubulin [7].
- Ca^{2+} directly increases cortical tension by initiating actin-myosin interaction [50]. Recently, Dmitrieff et al [35] performed a numerical simulations of marginal band coiling initiated by this mechanism and showed good agreement with experiment. In contrast to the present paper, the cell shape was described as an ellipsoid, and no analytical description of the marginal band was proposed.
- Ca^{2+} activates gelsolin, a molecule that severs actin filaments. Although the actin network is not the major factor maintaining the discoid platelet shape [26], it does contribute to disk-to-sphere transformation [51].

The roles of each mechanism are to be studied; however, all of them lead to approximately the same morphology of the marginal band, which we discuss in detail in the next section.

Mechanisms leading to the excessive curvature

The concept of the excessive curvature naturally arises in the first mentioned mechanism. In platelets, the marginal band consists of multiple microtubules with different polarity [52].

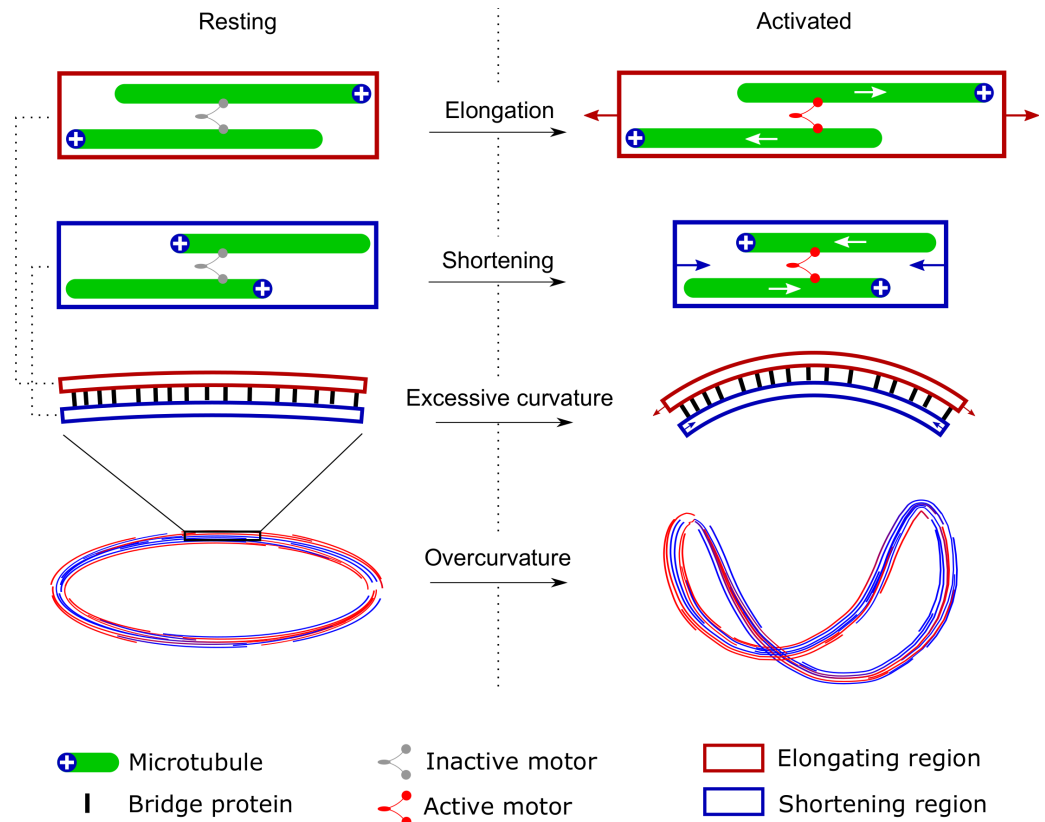


Fig 3. Possible mechanism of the overcurvature formation. Molecular motors induce relative sliding of microtubules, which are additionally cross-linked by bridge proteins. This leads to the formation of excessive curvature in the microtubules bundle, which manifests itself by the out-of-plane coiling of marginal band.

<https://doi.org/10.1371/journal.pcbi.1005899.g003>

Molecular motors exert sliding forces on the microtubules towards the plus-end (in case of dynein). Two microtubules with opposite polarity may be joined by dynein [53], which is inactive (or counterbalanced by kinesin) in the resting state. Activation shifts the motor balance [28], which leads to microtubule sliding and formation of elongating and shortening regions in the marginal band (Fig 3).

Additionally, these regions are cross-linked by protein bridges [35]. This resembles the mechanism of flagellar beating, also driven by dynein-mediated sliding of cross-linked microtubules, which leads to constant-curvature bending [54]. Another analogy is the bimetallic strip, which bends during heating due to the different thermal expansions of its joined metallic constituents. If the initial structure is the closed planar ring, formation of excessive curvature induces out-of-plane coiling. Experiment of Mouthuy et al [29] indeed showed that bimetallic ring forms the overcurved circle after temperature change.

The described interplay between microtubules and molecular motors in the marginal band may constitute the major or at least significant factor of its coiling in platelets. Nevertheless, different mechanisms of the excessive curvature formation are possible. For instance, dyneins or kinesins can be anchored in the submembrane cortex. Cortex influence on the microtubules bundle are discussed in the following section.

Deviations of marginal band from the overcurved ring

The influence of cell surface tension, which is implied in the majority of above-mentioned mechanisms, may lead to the coiling of marginal band with non-constant curvature. Direct simulation of filamentous ring growth in flexible confinements shows distinct packing patterns depending upon elastic properties of the filament and the shell [55]. However, in each case the ring coils to a saddle-like structure at the initial step, very similar to the marginal band coiling in platelets. It is not clear whether these structures obey the constant curvature condition or the similarity is only visual. From physical point of view, in the limit of large surface tension the shell would adopt spherical shape, irrespectively to the internal cytoskeletal elements. It is useful to consider the case when microtubules lie on spherical surface, at the same time minimizing the bending energy. The solution of the corresponding mathematical problem was obtained by Guven et al [56]. The only stable configuration possesses the same D_{2d} symmetry as an overcurved circles used in the present paper. However, while the normal component of its curvature vector is constant, geodesic component oscillates around zero with non-negligible amplitude. The total curvature can be found from these two components by the Pythagorean theorem; it would also be the sum of some constant value and oscillations (generally non-symmetrical). For this point, we conclude that the overcurved circle is suitable as the first approximation in the limit of large surface tension, as well as in other discussed cases. It allows us to capture symmetry relations and the overall structure of platelets shapes. However, for the studies which rely on platelets microstructural properties our method may not be accurate enough. For instance, Zhang et al [57] had to directly model the molecular-scale intra-platelet constituents to account for the influence of hemodynamic stress on the cells (i.e., shear-induced activation). Another experimental study [24] deals with platelet deformability at nanoscale level and the ability to exert contraction force. This force was successfully used for the targeted drug delivery using platelet-hybridized capsules, which rupture upon activation [58]. Generally, in such constraint conditions, one could expect the marginal band to deform and adopt complex shape, dependent on the applied force. It is an interesting research direction to consider perturbations of overcurved circle, such as curvature oscillations and unidirectional compression.

Methods

Simulation of platelet marginal band

We model the marginal band of platelets as an overcurved ring (tube) with circular cross-section. The central line consists of 4 lobes, each of them being a part of the Salkowski curve $\gamma_m(t) = (x_m(t), y_m(t), z_m(t))$ [59], where t is a parameter and the internal variable m can be uniquely (numerically) determined from overcurvature. The only modification is that we normalize the overcurved circle so that its length equals 2π for all values of O_p , denoting the normalization coefficient as $1/R$. Tubular surface is defined as follows: for each point on the $\gamma_m(t)/R$, we take a vector along the curve normal with the length r/R , and rotate it around the tangential direction. End of the vector gives the circle, which would be the cross-section of the tube at this particular point. In the Frenet frame (tangent, normal, binormal) the vector is defined by

$$\mathbf{r} = \left(0, \frac{r}{R} \cos\varphi, \frac{r}{R} \sin\varphi\right) \quad (1)$$

where φ is the angle of rotation. Now we should transform the coordinates to the laboratory reference frame. For this purpose, one can use the transition matrix to the Frenet frame from

[59] and its inverse. We obtain

$$\begin{aligned}
 \mathbf{T} &= \begin{pmatrix} -\cos t \cos nt - n \sin t \sin nt & -\cos nt \sin t + n \cos t \sin nt & -\frac{n}{m} \sin nt \\ \frac{n}{m} \sin t & -\frac{n}{m} \cos t & -1 \\ n \cos nt \sin t - \cos t \sin nt & -n \cos t \cos nt - \sin t \sin nt & \frac{n}{m} \cos t \end{pmatrix}^{-1} \\
 &= \frac{1}{n(1+m^2)} \begin{pmatrix} -(1+m^2)n \cos t \cos nt - m^2 \sin t \sin nt & m \sin t & m^2 \sin t \cos nt - n(1+m^2) \cos t \sin nt \\ -(1+m^2)n \cos nt \sin t + m^2 \cos t \sin nt & -m \cos t & m^2 \cos t \cos nt - n(1+m^2) \sin t \sin nt \\ -m \sin nt & -m^2 & m \cos nt \end{pmatrix},
 \end{aligned} \tag{2}$$

where $n = \frac{m}{\sqrt{1+m^2}}$. Finally, two-parametric expression of the tube surface (for one lobe) is as follows:

$$M(t, \varphi) = \frac{\gamma_m(t)}{R} + \frac{r}{R} (T_{12} \cos \varphi + T_{13} \sin \varphi, T_{22} \cos \varphi + T_{23} \sin \varphi, z_m(t) + T_{32} \cos \varphi + T_{33} \sin \varphi) \tag{3}$$

Four copies of (3) are then rotated, translated, and joined using the procedure described in [29] to form an overcurved ring with a circular cross-section.

Cell surface of resting platelets

Inside resting platelets microtubules are organized in a circumferential ring, which, under our assumption of circular marginal band cross-section, corresponds to the torus. Its radii are R and r (Fig 4).

The surface adopts configuration with minimal area, while it must contain the torus and confine certain cellular volume V . This problem possesses axial symmetry, and we assume that the sought surface is also axisymmetric. So we further consider a sectional plane passing through the axis of revolution (defined to be the y -axis). Another coordinate axis in this plane is the x -axis, which belongs to the torus symmetry plane. Additionally we assume that the platelet membrane is a closed bounded surface with zero genus, i.e. has no holes, in accordance with all existing platelet images.

We seek for the parametric profile $x(t) \geq 0, y(t), t \in [0, T]$, for which the surface of revolution has minimal area:

$$S = \int_0^T 2\pi x \sqrt{x'^2 + y'^2} dt \rightarrow \min \tag{4a}$$

subject to

$$V = \int_0^T \pi x^2 y' dt = \text{const}, \tag{4b}$$

$$(x - R)^2 + y^2 \geq r^2, \tag{4c}$$

$$x(0) = x(T) = 0, \tag{4d}$$

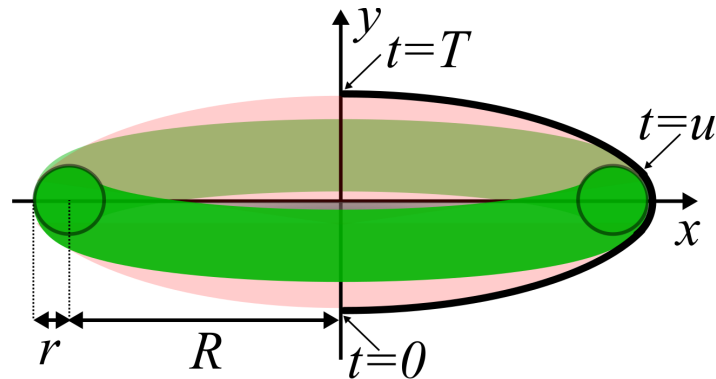


Fig 4. Illustration of platelet surface optimization problem. The surface is made by the revolution of profile $\{x(t), y(t)\}$ (thick line) around the ordinate axis. It consists of two parts: free (light red) and attached to the marginal band (green). Point $t = u$ corresponds to the contact between one of the mobile subdomain and the fixed part, and points $t = 0$ and $t = T$ are where the surface intersects the axis $x = 0$.

<https://doi.org/10.1371/journal.pcbi.1005899.g004>

where the prime denotes differentiation over t , and condition (4d) follows from the zero-genus assumption above.

Condition (4c) makes the problem distinct from that of finding constant mean curvature surface with free boundary. However, generally the profile consists of two parts: one is attached to the marginal band and follows its exterior and the other is free (both of them may consist of several disjoint components). From physical considerations, the free part should obey the constant-mean-curvature condition, which (in the case of axial symmetry) leads to the family of Delaunay surfaces [60]. The only Delaunay surface which satisfies condition (4d) is a sphere, so one can conclude that free-surface parts intersecting the symmetry axis are necessarily spherical caps. Moreover, those caps have the same radius so that the whole free surface has the same mean curvature (including sign), which physically corresponds to constant pressure of the surface-tension forces. The mean curvature of the attached part equals that of the marginal band, which is always larger than that of the free part, since the latter spans the whole diameter of the torus. And it is the reaction force of the rigid marginal band which compensates for the excessive surface tension. If the free part would attach to only one side of the torus (when considered inside the section of Fig 4), then it would have even larger mean curvature than that of the marginal band; hence, such free parts are impossible.

In the following we obtain the same solution formally from the problem statement (4). By introducing the slack variable $f^2 = (x-R)^2 + y^2 - r^2$, we transform condition (4c) into equality. Application of Euler-Lagrange multiplier theorem leads to the minimization of functional

$$\int_0^b L(t, x, x', y, y', f, f', \lambda_2, \lambda_2') dt, L = 2\pi x \sqrt{x^2 + y^2} - 2\lambda_1 \pi x^2 y' - \lambda_2 [(x - R)^2 + y^2 - r^2 - f^2], \quad (5)$$

where $2\lambda_1$ and $\lambda_2(t)$ are Lagrange multipliers (factor of 2 is introduced for simplicity). The

set of equations follows:

$$\begin{cases} 2\pi\sqrt{x'^2 + y'^2} - 4\pi\lambda_1xy' - 2\lambda_2(x - R) - \frac{d}{dt}\left(\frac{2\pi xx'}{\sqrt{x'^2 + y'^2}}\right) = 0 & (6a) \\ -2\lambda_2y - \frac{d}{dt}\left(\frac{2\pi xy'}{\sqrt{x'^2 + y'^2}} - 2\lambda_1\pi x^2\right) = 0 & (6b) \\ (x - R)^2 + y^2 - r^2 - f^2 = 0 & (6c) \\ 2\lambda_2f = 0 & (6d) \end{cases}$$

Let us first consider the segments for which inequality (4b) is not active, i.e. when $f^2(t) > 0$. Then Eq (6d) gives $\lambda_2(t) = 0$, and Eq (6b) yields:

$$\frac{xy'}{\sqrt{x'^2 + y'^2}} - \lambda_1x^2 = C, \tag{7}$$

where C is constant for each continuous segment (interval of t), but may differ between them. It can be shown that general solutions of Eq (7) are Delaunay surfaces with constant mean curvature. However, as discussed above, there can be at most two such free segments, containing $t = 0$ and $t = T$, respectively. Then condition (4d) implies $C = 0$ for all of these segments. Hence, Eq (6a) and (6b) are transformed into

$$\sqrt{x'^2 + y'^2} - 2\lambda_1xy' = \frac{d}{dt}\left(\frac{xx'}{\sqrt{x'^2 + y'^2}}\right), \tag{8a}$$

$$y' = \lambda_1x\sqrt{x'^2 + y'^2}. \tag{8b}$$

Eq (8b) implies

$$x^2 + (y - b)^2 = \lambda_1^{-2}, \text{sgn}(y') = \text{sgn}(\lambda_1), \tag{9}$$

which is a circle with the center on the y -axis and radius $1/|\lambda_1|$. Further, we additionally assume that our parametrization is counter clockwise, i.e. $y(0) < y(T)$, then Eq (9) corresponds to a circle with signed outward curvature equal to λ_1 . Interestingly, Eq (8a) is automatically satisfied for any such solution. Considering two possible free segments, we note that integration constant b may differ, but λ_1 is the same. The latter corresponds to mean curvature being constant over all free segments.

If the attached segment has zero length, then the profile is a single semicircle, and the whole platelet surface is a sphere containing the marginal band inside (potentially touching it). Otherwise we additionally need the boundary conditions between the attached and free segments, e.g. at the point $t = u$. Naturally, both $x(t)$ and $y(t)$ are continuous at $t = u$. Further, we apply Weierstrass–Erdmann conditions:

$$\begin{aligned} \frac{\partial L}{\partial x'} \Big|_{t=u-0}^{t=u+0} = 0 &\Rightarrow \frac{x'}{\sqrt{x'^2 + y'^2}} \Big|_{t=u-0}^{t=u+0} = 0, \\ \frac{\partial L}{\partial y'} \Big|_{t=u-0}^{t=u+0} = 0 &\Rightarrow \frac{y'}{\sqrt{x'^2 + y'^2}} \Big|_{t=u-0}^{t=u+0} = 0, \end{aligned} \tag{10}$$

noting that the rest of those conditions are trivial:

$$\begin{aligned} \frac{\partial L}{\partial f'} &= \frac{\partial L}{\partial \lambda_2'} = 0, \\ L - x' \frac{\partial L}{\partial x'} - y' \frac{\partial L}{\partial y'} - f' \frac{\partial L}{\partial f'} - \lambda_2' \frac{\partial L}{\partial \lambda_2'} &= -\lambda_2 [(x - R)^2 + y^2 - r^2 - f^2] = 0, \end{aligned} \tag{11}$$

where the last equality is due to Eq (6c). While Eq (10) does not guarantee continuity of x' and y' at $t = u$, it implies the continuity of tangent direction (i.e. x'/y' or y'/x') at $t = u$. Physically, it is also justified if there are no adhesion forces (at least near the contact line) between the marginal band and the cell membrane. In this case only tension forces are present, which are directed along each surface segment. For these forces to cancel out, they must be antiparallel, so the segments should join smoothly. The equivalent boundary condition is the zero contact angle between the cell surface and the marginal band (i.e., “superhydrophilic” [61] marginal band exterior). Note that this physical interpretation remains valid in the general case of activated platelets (no axial symmetry).

In the case of resting platelets, the condition (10) together with $f = 0$ and Eq (9) implies that the marginal-band circle is tangent to the semicircle of Eq (9), dividing the latter into two parts, one of which belongs to the sought profile. The centers of two circles and contact point lie on a line, which leads to the following equation for $a = x(u)$:

$$\lambda_1 a = \frac{a - R}{r}, \quad |a - R| \leq r, \tag{12}$$

for which $y(u)$ can take one of the two values with opposite signs. Note that positive and negative signs of λ_1 corresponds to internal and external tangency, respectively. The solution of Eq (12) is given by:

$$a = \frac{R}{1 - \lambda_1 r}, \quad -\frac{1}{R - r} \leq \lambda_1 \leq \frac{1}{R + r}. \tag{13}$$

If the radius of free-segment circle is smaller than the torus hole radius $R - r$ ($|\lambda_1|$ is too large), joining of two curves is not possible at all. While a small semicircle can minimize the functional (5), it does not surround the marginal band. For larger free-segment radius but negative λ_1 , there are two circles externally tangent to the marginal band. There are two ways to combine the parts of these circles with parts of the marginal band into a smooth profile, but only one of them, corresponding to a biconcave disk, surrounds the marginal band. Similarly, for positive λ_1 there are two circles, to which the marginal band is internally tangent. In principle, the segments of these circles can be combined smoothly with the marginal band in three ways, but two of such profiles would only touch the marginal band at a single contact point corresponding to the semicircle solutions described above. The remaining solution is a biconvex one. Importantly, all solutions except a semicircle are symmetric with respect to the x -axis and are uniquely determined by the value of λ_1 [cf. Eq (13)].

The only additional complication is that the segments of the biconcave shape must not intersect, i.e. each concave segment should not cross the x -axis (zero-genus assumption). The minimum possible curvature is thus $-2r/(R^2 - r^2)$. For smaller (more negative) curvatures there exist surfaces with flat double layer in the center, that potentially may be obtained for real platelets by removing sufficient amount of volume. Still, we do not consider them here, as they require modification of the functional (5) to explicitly include the double-layer part. Finally, all

symmetric solutions can be expressed with the following formula:

$$y(x) = \pm \left\{ \begin{array}{l} \frac{1}{\lambda_1} \left(\sqrt{1 - (\lambda_1 x)^2} - \sqrt{(1 - \lambda_1 r)^2 - (\lambda_1 R)^2} \right), \quad 0 \leq x \leq \frac{R}{1 - \lambda_1 r} \\ \sqrt{r^2 - (x - R)^2}, \quad \frac{R}{1 - \lambda_1 r} < x \leq R + r \end{array} \right\}, \quad -\frac{2r}{R^2 - r^2} \leq \lambda_1 \leq \frac{1}{R + r} \quad (14)$$

It can be shown that $y(x)$ is smooth with respect to λ_1 in the whole specified range, including $\lambda_1 = 0$. It is straightforward to obtain the cell volume V from Eq (13), but the final expression is rather cumbersome. Importantly, V monotonically increases with λ_1 , which also follows from not-crossing of profiles for different λ_1 , i.e. for any two profiles, one completely surrounds the other (potentially touching it).

We summarize all the obtained morphologies of resting platelets, and provide the characteristic values of λ_1 and V in a table presented in Fig 5.

Volume increases from top to bottom and λ_1 is a single-valued function of V for all ranges of shapes. Thus, the variational problem (4) has unique solution (except for vertical translations of a semicircle profiles). If only symmetric attached profiles are considered (bounded V), curvature λ_1 is a convenient internal parameter, bijectively related to V .

Cell surface in case of coiled marginal band

The numerical optimization algorithm of platelets shape for arbitrary overcurvature of the marginal band was briefly described above and summarized in Fig 6.

It is implemented as the Surface Evolver [62] script, available as S1 File. If cell parameters correspond to non-sphered shape (volume is not too large; cf. Fig 5), the optimization procedure begins. At the first step we construct the surface of overcurved ring (3) from given O_p and r/R with φ varying from φ_d to $2\pi - \varphi_d$. For this purpose, we define facets that are constrained to lie on boundary and refine them several times using intrinsic Surface Evolver procedure (`r` command). The obtained surface (Fig 5A) simulates the region where cell membrane sticks to the marginal band. It is excluded from the following optimization (`fixed`). We also define two mobile parts of the surface: first is bounded by the space curve $\varphi = \varphi_d$ and the second by $\varphi = 2\pi - \varphi_d$, corresponding to the upper and lower cell halves (Fig 5B). These parts are refined and optimized to have minimal area with the requirement that the overall surface should confine the prescribed volume V . Standard procedure (`g` and `r` commands) is used in this step.

Next, we optimize the interface at the border between mobile and fixed parts. The aim is to make the surface smooth, i.e., minimize the contact angle, analogously to the condition (10) in the axisymmetric case. So we attenuate the contact position $\varphi_c(t)$ along the border. For this purpose we implemented special procedure `opt`, which computes the new positions of vertices on the overcurved circle (simple one-step gradient optimization). Next the surface is optimized, which again leads to the non-zero contact angle. After several iterations, we obtain reasonably converged shape. The typical process is shown in S2 Movie. We stress that the physical reasoning behind our method requires both contact angles and the free-surface to be simultaneously optimized (as is in Fig 5E). The two-level iterative optimization is just one of the possible options to achieve this goal. Note also that we do not consider the influence of the membrane tension on the marginal band. Instead, we assume that it is an overcurved ring with already known shape.

Characteristic feature of the activated platelets is the presence of pseudopodia, which influence the physical properties of cells. For instance, they can increase the hydrodynamic radius of cells. Light-scattering patterns also differ for platelet models with or without pseudopodia [19]. However, the main effect in this case is the decrease of volume of the central cell body,

Platelet shape	Profile	Curvature λ_1	Volume V
Touching in the center		$-\frac{2r}{R^2 - r^2}$	$\pi r \left[R^2 - r^2 + rR \left(\pi + 4 \arctan \left(\frac{r}{R} \right) \right) \right]$
Biconcave		in between	
Discoid		0	$\frac{\pi r}{3} (6R^2 + 3\pi Rr + 4r^2)$
Biconvex		in between	
Sphere (touching the torus on the x-axis)		$\frac{1}{R+r}$	$\frac{4\pi(R+r)^3}{3}$
Sphere (detached or touching off the x-axis)		$0 < \lambda_1 < \frac{1}{R+r}$	$\frac{4\pi}{3\lambda_1^3}$

Fig 5. All possible axisymmetric profiles of resting platelets as obtained by the solution of variational problem (4). Black circles correspond to the marginal band cross-sections. Volume increases from top to bottom, curvature increases when going from the first to the fifth row, but decreases for the last row.

<https://doi.org/10.1371/journal.pcbi.1005899.g005>

because protrusions with thickness less than the wavelength are weak scatterers. Anyway, we implemented the possibility to add simple membrane protrusions (resembling pseudopodia) by the following procedure. First, we fix the obtained surface except several vertices, randomly selected on the mobile surface parts. Next, we increase the target cell volume by a small amount, multiplying it by $(1 + \text{ppv})$, where ppv is a user-controlled parameter representing the relative volume of pseudopodia. On the next step, we perform a single evolver iteration (g), which forces the unfixed vertices to shoot out (Fig 7).

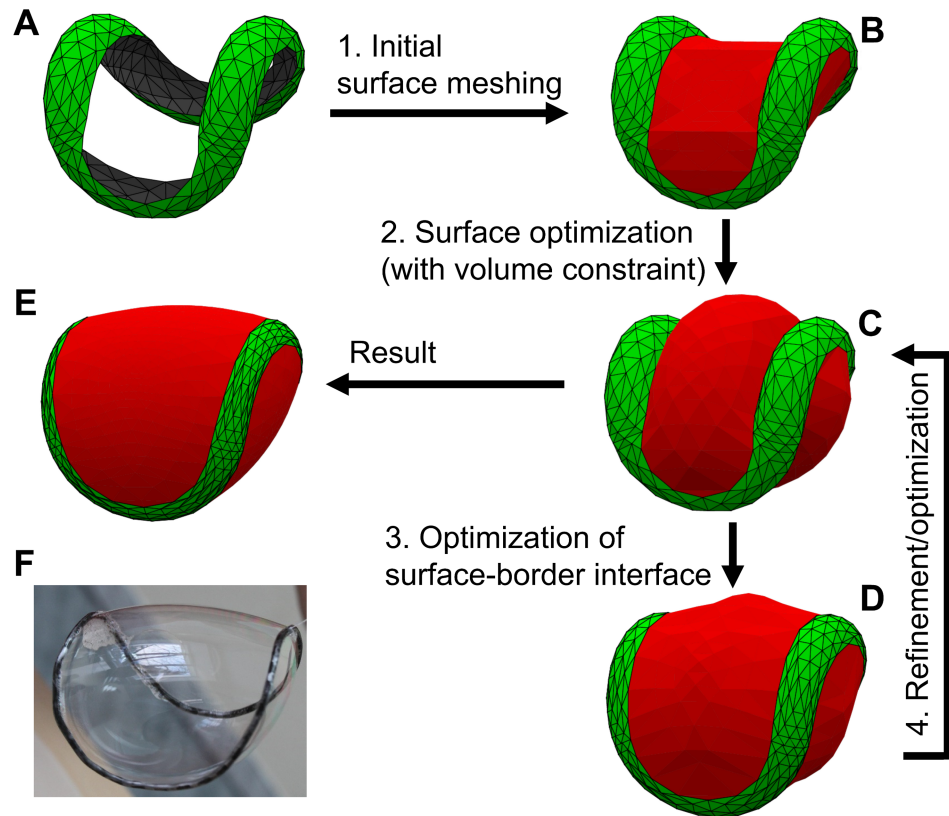


Fig 6. Scheme of the construction of blood platelet shape model (A–E) and the soap bubble supported by the overcurved wire ring (F), which presents the real-world approximation of the optimization problem solution for the mobile surface parts.

<https://doi.org/10.1371/journal.pcbi.1005899.g006>

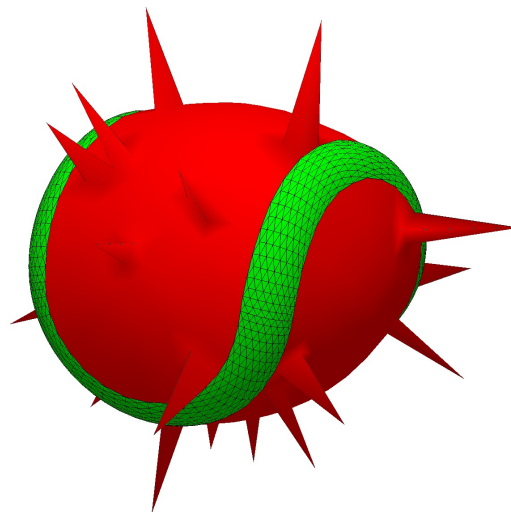


Fig 7. Example of platelet model with 20 pseudopodia. Their total relative volume is 0.01.

<https://doi.org/10.1371/journal.pcbi.1005899.g007>

It should be stressed that this is a zero-order approximation of pseudopodia, mainly to give the shape model better visual resemblance to fully-activated platelet. It may correspond physically to the extrusion of feeble sites of platelet surface (i.e., membrane loci where no or little filaments are attached) by an intracellular pressure, but we do not consider microtubules or actin polymerization, which are the main mechanistical feature of the process.

Example of application: Light scattering simulations

In order to demonstrate the relevance of the proposed shape model for platelets research, we performed simulation of light scattering by these shapes using the discrete-dipole approximation (DDA). These simulations can be implemented in single script using the surface evolver's ability to run system commands. The workflow consists of:

1. Simulation of 3D platelet shape and saving it as an .obj file, which is accomplished by our script for the Surface Evolver. The .obj format is acceptable by a wide variety of software for 3D modeling and computations. Basically, it contains the surface mesh.
2. Filling the shape interior with dipoles using Point in Polyhedron (PIP) tool [63]. The DDA involves volume-integral method for the solution of Maxwell equations, so volume discretization of the particle is required [64]. This step currently is a computational bottleneck since each volume element (dipole) of a regular grid is tested independently for being inside the platelet surface. Hence, the time is proportional to both the number of dipoles and the number of surface mesh elements. The only parameter for PIP is the number of dipoles per cell dimension along the x -axis. To evaluate this parameter, we employ the standard DDA rule of thumb of 10 dipoles per the wavelength [65]. The discretization takes 5–10 min on a single processor core. An example of obtained dipoles configuration is shown in Fig 8A.
3. Simulation of light scattering using ADDA code v.1.2 [65]. ADDA is open-source software for discrete-dipole approximation. It uses Fast Fourier Transform for acceleration of vector-matrix multiplication, so that light scattering simulation time is nearly proportional to the number of dipoles. In case of platelets, the simulation takes around 1–2 minutes. The scatterer is defined by the shape (obtained in the previous step), size parameter, refractive index, and orientation.

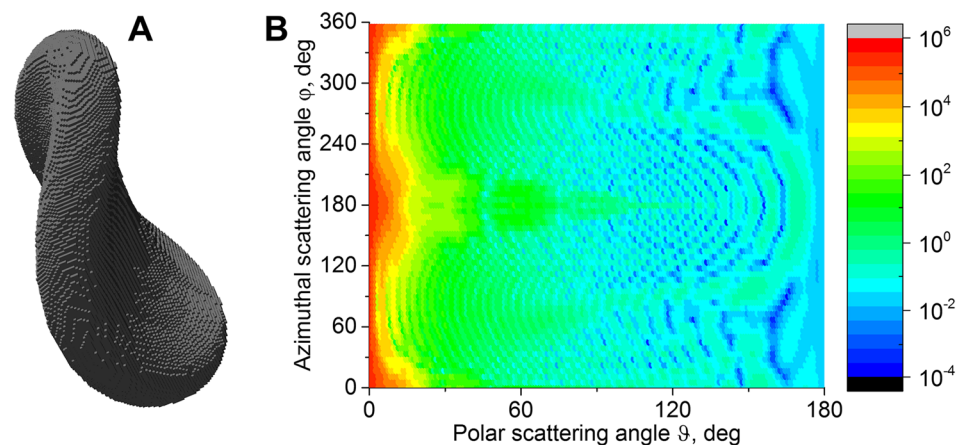


Fig 8. A. Light scattering model obtained by filling of platelet model with dipoles; incident wave propagates from below. B. Result of light scattering simulation—contour plot of S_{11} element of the Mueller matrix in logarithmic scale versus polar and azimuthal scattering angles.

<https://doi.org/10.1371/journal.pcbi.1005899.g008>

We performed simulation for the particle oriented as shown in Fig 8A, where the incident wave propagates from below. The refractive index of the platelet model was set to 1.03 (relative to the medium), the volume to 11.5 fL, and the wavelength in vacuum—to 405 nm, while medium refractive index was 1.337. In Fig 8B, the intensity of scattered light (more precisely, the Mueller matrix element S_{11}) is shown as a function of polar and azimuthal scattering angles. The distribution of intensity shows complex features and is distinctive from smooth pattern of oblate spheroid described in [66]. Note also that the presented model of activated platelet not only possess one or two additional morphological parameter in comparison with models of resting platelets, but also lacks axial symmetry, which brings about the influence of Euler angle γ on the light-scattering patterns. These three additional parameters complicate the solution of the inverse light scattering problem and hinder the incorporation of the presented model into the existing algorithms [9,10]. Further theoretical and experimental research concerning optical properties of blood platelets is needed to extract new information and develop novel diagnostic techniques.

Supporting information

S1 Movie. Simulation of platelet activation. The simulated platelet shape is shown as the overcurvature increases from 1 to 2.3. The relative cell volume remains constant (2.0), as well as the relative thickness of marginal band (0.2). After overcurvature of 2.26, the cell becomes spherical, as the convoluted marginal band fits inside.

(AVI)

S2 Movie. Surface optimization. The surface optimization for platelet model is shown in real-time for overcurvature 1.8, relative cell volume 1.8 and relative marginal band thickness 0.2.

(AVI)

S1 File. Script for simulation of platelet shape from given parameters: Overcurvature O_p , relative volume v and dimensionless radius of marginal band cross-section r/R . Two additional parameters may be set: the relative volume of pseudopodia and .obj file where to save the optimized surface. All parameters are set at first lines of the script as follows:

```
parameter OC := 1.8 //Overcurvature
parameter Vol := 1.8 //Relative volume,  $V/R^3$ 
parameter Rad := 0.2 //Relative half-thickness of the marginal
band,  $r/R$ 
parameter ppv := 0.0 //Relative volume of pseudopodia; 0 if
not needed
parameter sobj := "" //Filename to save .obj file; blank if
not needed
```

The Surface Evolver (<http://facstaff.susqu.edu/brakke/evolver/evolver.html>) is needed to run the script. Once it is installed, the script can be launched by double click or from command line. Optimization is displayed in standard surface evolver interactive 3D window. The steps of optimization procedure are defined in the bottom of the file. By default, the implemented script gives reasonable results for all tested parameters. However, the procedure converges faster for models with smaller volumes, especially with concave surface. So, for some values of parameters, the number of iterations can be significantly reduced.

(FE)

Author Contributions

Conceptualization: Alexander E. Moskalensky, Maxim A. Yurkin, Vyacheslav M. Nekrasov, Andrei V. Chernyshev.

Data curation: Alexander E. Moskalensky.

Formal analysis: Alexander E. Moskalensky.

Funding acquisition: Alexander E. Moskalensky.

Investigation: Alexander E. Moskalensky.

Methodology: Alexander E. Moskalensky, Maxim A. Yurkin.

Project administration: Alexander E. Moskalensky.

Resources: Alexander E. Moskalensky.

Software: Alexander E. Moskalensky, Artem R. Muliukov.

Supervision: Alexander E. Moskalensky.

Validation: Alexander E. Moskalensky, Maxim A. Yurkin, Vyacheslav M. Nekrasov.

Visualization: Alexander E. Moskalensky.

Writing – original draft: Alexander E. Moskalensky.

Writing – review & editing: Alexander E. Moskalensky, Maxim A. Yurkin, Alena L. Litvinenko, Vyacheslav M. Nekrasov, Valeri P. Maltsev.

References

1. Brewer DB, Max Schultze (1865), G. Bizzozero (1882) and the discovery of the platelet. *British Journal of Haematology*. 2006; 133: 251–258. <https://doi.org/10.1111/j.1365-2141.2006.06036.x> PMID: 16643426
2. Purvis JE, Chatterjee MS, Brass LF, Diamond SL. A molecular signaling model of platelet phosphoinositide and calcium regulation during homeostasis and P2Y1 activation. *Blood*. 2008; 112: 4069–4079. <https://doi.org/10.1182/blood-2008-05-157883> PMID: 18596227
3. Dolan AT, Diamond SL. Systems modeling of Ca(2+) homeostasis and mobilization in platelets mediated by IP3 and store-operated Ca(2+) entry. *Biophys J*. 2014; 106: 2049–2060. <https://doi.org/10.1016/j.bpj.2014.03.028> PMID: 24806937
4. Lee MY, Diamond SL. A Human Platelet Calcium Calculator Trained by Pairwise Agonist Scanning. *PLoS Comput Biol*. 2015; 11: e1004118. <https://doi.org/10.1371/journal.pcbi.1004118> PMID: 25723389
5. Born GVR. Aggregation of Blood Platelets by Adenosine Diphosphate and its Reversal. *Nature*. 1962; 194: 927–929. <https://doi.org/10.1038/194927b0> PMID: 13871375
6. Maurer-Spurej E, Devine DV. Platelet Aggregation Is Not Initiated by Platelet Shape Change. *Laboratory Investigation*. 2001; 81: 1517–1525. <https://doi.org/10.1038/labinvest.3780365> PMID: 11706059
7. Paul BZ, Daniel JL, Kunapuli SP. Platelet shape change is mediated by both calcium-dependent and -independent signaling pathways. Role of p160 Rho-associated coiled-coil-containing protein kinase in platelet shape change. *J Biol Chem*. 1999; 274: 28293–28300. PMID: 10497186
8. Strokotov DI, Moskalensky AE, Nekrasov VM, Maltsev VP. Polarized light-scattering profile-advanced characterization of nonspherical particles with scanning flow cytometry. *Cytometry A*. 2011; 79: 570–579. <https://doi.org/10.1002/cyto.a.21074> PMID: 21548080
9. Moskalensky AE, Yurkin MA, Konokhova AI, Strokotov DI, Nekrasov VM, Chernyshev AV, et al. Accurate measurement of volume and shape of resting and activated blood platelets from light scattering. *J Biomed Opt*. 2013; 18: 17001. <https://doi.org/10.1117/1.JBO.18.1.017001> PMID: 23288415
10. Litvinenko AL, Moskalensky AE, Karmadonova NA, Nekrasov VM, Strokotov DI, Konokhova AI, et al. Fluorescence-free flow cytometry for measurement of shape index distribution of resting, partially activated, and fully activated platelets. *Cytometry A*. 2016; 89: 1010–1016. <https://doi.org/10.1002/cyto.a.23003> PMID: 27768824
11. Jiang W. Study of Morphology Based Cell Assay by Diffraction Imaging Flow Cytometry. 2015; <http://thescholarship.ecu.edu/handle/10342/4991>
12. Chesnutt JKW, Han H-C. Tortuosity triggers platelet activation and thrombus formation in microvessels. *J Biomech Eng*. 2011; 133: 121004. <https://doi.org/10.1115/1.4005478> PMID: 22206421

13. Chesnutt J, Han H-C. Increased tortuosity promotes platelet activation and thrombus formation in microvessels. *FASEB J.* 2012; 26: 1058.
14. Chesnutt JKW, Han H-C. Platelet size and density affect shear-induced thrombus formation in tortuous arterioles. *Phys Biol.* 2013; 10. <https://doi.org/10.1088/1478-3975/10/5/056003> PMID: 23974300
15. Fitzgibbon S, Cowman J, Ricco AJ, Kenny D, Shaqfeh ESG. Examining platelet adhesion via Stokes flow simulations and microfluidic experiments. *Soft Matter.* 2014; 11: 355–367. <https://doi.org/10.1039/C4SM01450B> PMID: 25382632
16. Vahidkhan K, Diamond SL, Bagchi P. Platelet Dynamics in Three-Dimensional Simulation of Whole Blood. *Biophys J.* 2014; 106: 2529–2540. <https://doi.org/10.1016/j.bpj.2014.04.028> PMID: 24896133
17. Ruggeri ZM. Platelet adhesion under flow. *Microcirculation.* 2009; 16: 58–83. <https://doi.org/10.1080/10739680802651477> PMID: 19191170
18. Fedosov DA, Noguchi H, Gompper G. Multiscale modeling of blood flow: from single cells to blood rheology. *Biomech Model Mechanobiol.* 2014; 13: 239–258. <https://doi.org/10.1007/s10237-013-0497-9> PMID: 23670555
19. Kolesnikova IV, Potapov SV, Yurkin MA, Hoekstra AG, Maltsev VP, Semyanov KA. Determination of volume, shape and refractive index of individual blood platelets. *Journal of Quantitative Spectroscopy and Radiative Transfer.* 2006; 102: 37–45. <https://doi.org/10.1016/j.jqsrt.2006.02.050>
20. Gear AR. Rapid platelet morphological changes visualized by scanning-electron microscopy: kinetics derived from a quenched-flow approach. *Br J Haematol.* 1984; 56: 387–398. PMID: 6421308
21. Sadoul K. New explanations for old observations: marginal band coiling during platelet activation. *J Thromb Haemost.* 2015; 13: 333–346. <https://doi.org/10.1111/jth.12819> PMID: 25510620
22. Mountrakis L, Lorenz E, Hoekstra AG. Where do the platelets go? A simulation study of fully resolved blood flow through aneurysmal vessels. *Interface Focus.* 2013; 3. <https://doi.org/10.1098/rsfs.2012.0089> PMID: 24427532
23. Wu Z, Xu Z, Kim O, Alber M. Three-dimensional multi-scale model of deformable platelets adhesion to vessel wall in blood flow. *Philos Trans A Math Phys Eng Sci.* 2014; 372. <https://doi.org/10.1098/rsta.2013.0380> PMID: 24982253
24. Myers DR, Qiu Y, Fay ME, Tennenbaum M, Chester D, Cuadrado J, et al. Single-platelet nanomechanics measured by high-throughput cytometry. *Nat Mater.* 2017; 16: 230–235. <https://doi.org/10.1038/nmat4772> PMID: 27723740
25. Behnke O, Zelander T. Substructure in negatively stained microtubules of mammalian blood platelets. *Exp Cell Res.* 1966; 43: 236–239. PMID: 4161919
26. White JG, Rao GH. Microtubule coils versus the surface membrane cytoskeleton in maintenance and restoration of platelet discoid shape. *Am J Pathol.* 1998; 152: 597–609. PMID: 9466587
27. Thon JN, Macleod H, Begonja AJ, Zhu J, Lee K-C, Mogilner A, et al. Microtubule and cortical forces determine platelet size during vascular platelet production. *Nat Commun.* 2012; 3: 852. <https://doi.org/10.1038/ncomms1838> PMID: 22617292
28. Diagouraga B, Grichine A, Fertin A, Wang J, Khochbin S, Sadoul K. Motor-driven marginal band coiling promotes cell shape change during platelet activation. *J Cell Biol.* 2014; 204: 177–185. <https://doi.org/10.1083/jcb.201306085> PMID: 24421335
29. Mouthuy P-O, Coulombier M, Pardoën T, Raskin J-P, Jonas AM. Overcurvature describes the buckling and folding of rings from curved origami to foldable tents. *Nat Commun.* 2012; 3: 1290. <https://doi.org/10.1038/ncomms2311> PMID: 23250420
30. Deuling HJ, Helfrich W. Red blood cell shapes as explained on the basis of curvature elasticity. *Biophys J.* 1976; 16: 861–868. [https://doi.org/10.1016/S0006-3495\(76\)85736-0](https://doi.org/10.1016/S0006-3495(76)85736-0) PMID: 938726
31. Fedosov DA, Caswell B, Karniadakis GE. A Multiscale Red Blood Cell Model with Accurate Mechanics, Rheology, and Dynamics. *Biophys J.* 2010; 98: 2215–2225. <https://doi.org/10.1016/j.bpj.2010.02.002> PMID: 20483330
32. Evans EA. Minimum energy analysis of membrane deformation applied to pipet aspiration and surface adhesion of red blood cells. *Biophys J.* 1980; 30: 265–284. [https://doi.org/10.1016/S0006-3495\(80\)85093-4](https://doi.org/10.1016/S0006-3495(80)85093-4) PMID: 7260275
33. Gilev KV, Yurkin MA, Chernyshova ES, Strokotov DI, Chernyshev AV, Maltsev VP. Mature red blood cells: from optical model to inverse light-scattering problem. *Biomed Opt Express.* 2016; 7: 1305–1310. <https://doi.org/10.1364/BOE.7.001305> PMID: 27446656
34. White JG, Escolar G. Current concepts of platelet membrane response to surface activation. *Platelets.* 1993; 4: 175–189. <https://doi.org/10.3109/09537109309013215> PMID: 21043839

35. Dmitrieff S, Alsina A, Mathur A, Nédélec FJ. Balance of microtubule stiffness and cortical tension determines the size of blood cells with marginal band across species. *PNAS*. 2017; 114: 4418–4423. <https://doi.org/10.1073/pnas.1618041114> PMID: 28400519
36. Hartwig JH. Mechanisms of actin rearrangements mediating platelet activation. *J Cell Biol*. 1992; 118: 1421–1442. PMID: 1325975
37. Downing SR, Klement GL. Isolation and proteomic analysis of platelets by SELDI-TOF MS. *Methods Mol Biol*. 2012; 818: 153–170. https://doi.org/10.1007/978-1-61779-418-6_12 PMID: 22083823
38. White JG. Effects of ethylenediamine tetracetic acid (EDTA) on platelet structure. *Scand J Haematol*. 1968; 5: 241–254. PMID: 4969536
39. Bender M, Stritt S, Nurden P, van Eeuwijk JMM, Zieger B, Kentouche K, et al. Megakaryocyte-specific Profilin1-deficiency alters microtubule stability and causes a Wiskott–Aldrich syndrome-like platelet defect. *Nat Commun*. 2014; 5. <https://doi.org/10.1038/ncomms5746> PMID: 25187265
40. Lema-Foley C, Lee KG, Parris T, Koroleva Z, Mohan N, Noailles P, et al. Reversible Alteration of Morphology in an Invertebrate Erythrocyte: Properties of the Natural Inducer and the Cellular Response. *The Biological Bulletin*. 1999; 197: 395–405. <https://doi.org/10.2307/1542794> PMID: 10630341
41. Sveshnikova AN, Ataullakhanov FI, Panteleev MA. Compartmentalized calcium signaling triggers subpopulation formation upon platelet activation through PAR1. *Mol Biosyst*. 2015; 11: 1052–1060. <https://doi.org/10.1039/c4mb00667d> PMID: 25627921
42. Vinogradova MV, Malanina GG, Reddy ASN, Fletterick RJ. Structure of the complex of a mitotic kinesin with its calcium binding regulator. *Proc Natl Acad Sci USA*. 2009; 106: 8175–8179. <https://doi.org/10.1073/pnas.0811131106> PMID: 19416847
43. Hisanaga S, Pratt MM. Calmodulin interaction with cytoplasmic and flagellar dynein: calcium-dependent binding and stimulation of adenosine triphosphatase activity. *Biochemistry*. 1984; 23: 3032–3037. <https://doi.org/10.1021/bi00308a029> PMID: 6147157
44. Karr TL, Kristofferson D, Purich DL. Calcium ion induces endwise depolymerization of bovine brain microtubules. *J Biol Chem*. 1980; 255: 11853–11856. PMID: 7440572
45. O'Brien ET, Salmon ED, Erickson HP. How calcium causes microtubule depolymerization. *Cell Motil Cytoskeleton*. 1997; 36: 125–135. [https://doi.org/10.1002/\(SICI\)1097-0169\(1997\)36:2<125::AID-CM3>3.0.CO;2-8](https://doi.org/10.1002/(SICI)1097-0169(1997)36:2<125::AID-CM3>3.0.CO;2-8) PMID: 9015201
46. Steiner M, Ikeda Y. Quantitative assessment of polymerized and depolymerized platelet microtubules. *J Clin Invest*. 1979; 63: 443–448. <https://doi.org/10.1172/JCI109321> PMID: 429563
47. Kenney DM, Chao FC. Ionophore-induced disassembly of blood platelet microtubules: effect of cyclic AMP and indomethacin. *J Cell Physiol*. 1980; 103: 289–298. <https://doi.org/10.1002/jcp.1041030214> PMID: 6254997
48. Winokur R, Hartwig JH. Mechanism of shape change in chilled human platelets. *Blood*. 1995; 85: 1796–1804. PMID: 7703486
49. Oliver AE, Tablin F, Walker NJ, Crowe JH. The internal calcium concentration of human platelets increases during chilling. *Biochimica et Biophysica Acta (BBA)—Biomembranes*. 1999; 1416: 349–360. [https://doi.org/10.1016/S0005-2736\(98\)00239-9](https://doi.org/10.1016/S0005-2736(98)00239-9)
50. Daniel JL, Molish IR, Rigmaiden M, Stewart G. Evidence for a role of myosin phosphorylation in the initiation of the platelet shape change response. *J Biol Chem*. 1984; 259: 9826–9831. PMID: 6746669
51. Kiuru S, Javela K, Somer H, Kekomäki R. Altered platelet shape change in hereditary gelsolin Asp187Asn-related amyloidosis. *Thromb Haemost*. 2000; 83: 491–495. PMID: 10744159
52. Patel-Hett S, Richardson JL, Schulze H, Drabek K, Isaac NA, Hoffmeister K, et al. Visualization of microtubule growth in living platelets reveals a dynamic marginal band with multiple microtubules. *Blood*. 2008; 111: 4605–4616. <https://doi.org/10.1182/blood-2007-10-118844> PMID: 18230754
53. Tanenbaum ME, Vale RD, McKenney RJ. Cytoplasmic dynein crosslinks and slides anti-parallel microtubules using its two motor domains. *eLife*. 2013; 2. <https://doi.org/10.7554/eLife.00943> PMID: 24015359
54. Ohmuro J, Ishijima S. Hyperactivation is the mode conversion from constant-curvature beating to constant-frequency beating under a constant rate of microtubule sliding. *Mol Reprod Dev*. 2006; 73: 1412–1421. <https://doi.org/10.1002/mrd.20521> PMID: 16894536
55. Vetter R, Wittel FK, Herrmann HJ. Morphogenesis of filaments growing in flexible confinements. *Nat Commun*. 2014; 5: 4437. <https://doi.org/10.1038/ncomms5437> PMID: 25026967
56. Guven J, Vázquez-Montejo P. Confinement of semiflexible polymers. *Phys Rev E*. 2012; 85: 026603. <https://doi.org/10.1103/PhysRevE.85.026603> PMID: 22463345
57. Zhang P, Zhang L, Slepian MJ, Deng Y, Bluestein D. A multiscale biomechanical model of platelets: Correlating with in-vitro results. *Journal of Biomechanics*. 2017; 50: 26–33. <https://doi.org/10.1016/j.jbiomech.2016.11.019> PMID: 27894676

58. Hansen CE, Myers DR, Baldwin WH, Sakurai Y, Meeks SL, Lyon LA, et al. Platelet-Microcapsule Hybrids Leverage Contractile Force for Targeted Delivery of Hemostatic Agents. *ACS Nano*. 2017; 11: 5579–5589. <https://doi.org/10.1021/acsnano.7b00929> PMID: 28541681
59. Monterde J. Salkowski curves revisited: A family of curves with constant curvature and non-constant torsion. *Computer Aided Geometric Design*. 2009; 26: 271–278. <https://doi.org/10.1016/j.cagd.2008.10.002>
60. Delaunay C. Sur la surface de révolution dont la courbure moyenne est constante. *Journal de Mathématiques Pures et Appliquées*. 1841; 309–314.
61. Lobaton EJ, Salamon TR. Computation of constant mean curvature surfaces: Application to the gas-liquid interface of a pressurized fluid on a superhydrophobic surface. *J Colloid Interface Sci*. 2007; 314: 184–198. <https://doi.org/10.1016/j.jcis.2007.05.059> PMID: 17588596
62. Brakke KA. The Surface Evolver. *Experimental Mathematics*. 1992; 1: 141–165. <https://doi.org/10.1080/10586458.1992.10504253>
63. Schuh R. Arbitrary particle shape modeling in DDSCAT and validation of simulation results. In: Wriedt T, Hoekstra AG, editors. *Proceedings of the DDA-Workshop*. Bremen, Germany; 2007. pp. 22–24. <http://diogenes.iwt.uni-bremen.de/vt/laser/papers/DDA-Workshop-final-proceedings.pdf>
64. Yurkin MA, Hoekstra AG. The discrete dipole approximation: An overview and recent developments. *Journal of Quantitative Spectroscopy and Radiative Transfer*. 2007; 106: 558–589. <https://doi.org/10.1016/j.jqsrt.2007.01.034>
65. Yurkin MA, Hoekstra AG. The discrete-dipole-approximation code ADDA: Capabilities and known limitations. *Journal of Quantitative Spectroscopy and Radiative Transfer*. 2011; 112: 2234–2247. <https://doi.org/10.1016/j.jqsrt.2011.01.031>
66. Moskalensky AE, Strokotov DI, Chernyshev AV, Maltsev VP, Yurkin MA. Additivity of light-scattering patterns of aggregated biological particles. *J Biomed Opt*. 2014; 19: 085004. <https://doi.org/10.1117/1.JBO.19.8.085004> PMID: 25104406