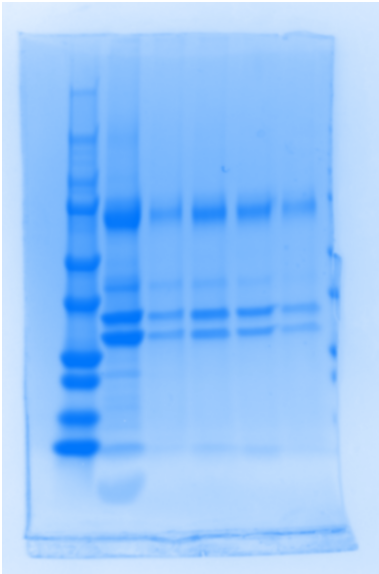


Supp Figure 1F\_LEFT

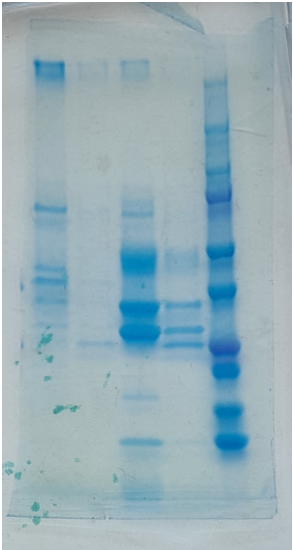
M L 9.2 9.5 10.1 10.4



M = Bio-rad precession plus dual protein standards  
L = Sample loaded onto SEC  
# = Volume sample was collected from SEC (ml)

Supp Figure 1F\_RIGHT

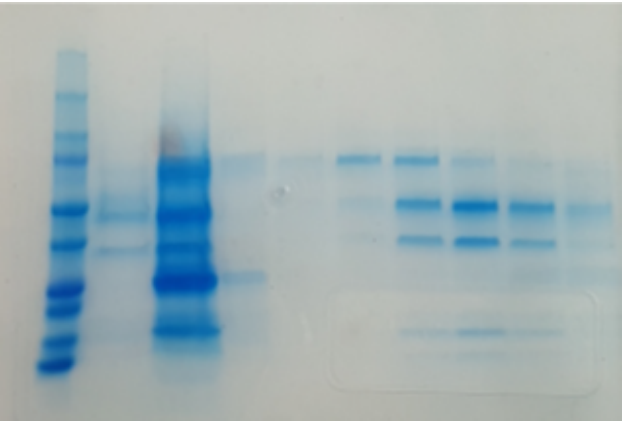
8 11.9 C 10.1 M



M = Bio-rad precession plus dual protein standards  
C = Concentrated sample after SEC  
# = Volume sample was collected from SEC (ml)

Supp Figure 1H

M FE L 8 10.5 11 11.5 12 12.5 13



M = Bio-rad precession plus dual protein standards  
FE = Flag elution  
L = Sample loaded onto SEC  
# = Volume sample was collected from SEC (ml)