

Correction: Morphological Evolution Is Accelerated among Island Mammals

Virginie Millien

DOI: 10.1371/journal.pbio.0040321

In *PLoS Biology*, volume 4, issue 10:

The legend to Figure 4 incorrectly identifies the dotted line as representing evolutionary rate and the solid line as representing the size of a morphological character. This identification is reversed in the caption. The dotted line represents the morphological trait's magnitude and the solid is the rate of evolution.

This correction note may be found online at DOI: 10.1371/journal.pbio.0040384.

Published November 14, 2006.

Citation: (2006) Correction: Morphological evolution is accelerated among island mammals. *PLoS Biol* 4(11): e384.

DOI: 10.1371/journal.pbio.0040384

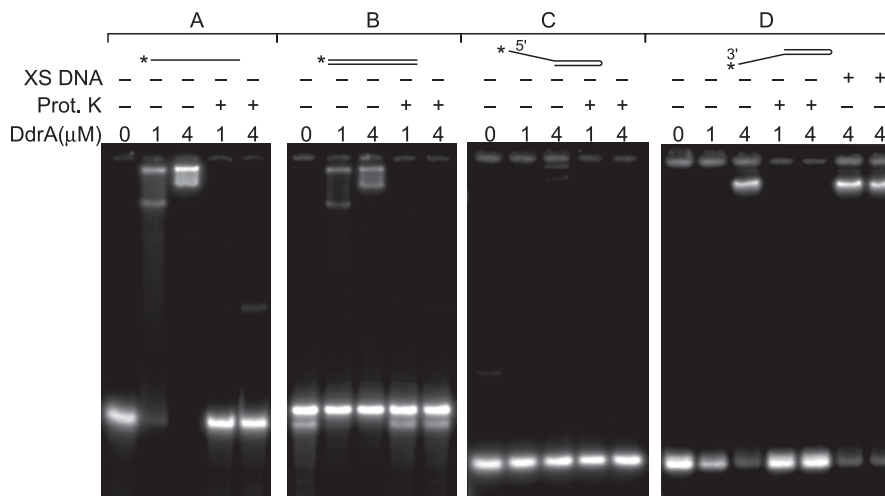
Correction: Preserving Genome Integrity: The DdrA Protein of *Deinococcus radiodurans* R1

Dennis R. Harris, Masashi Tanaka, Sergei V. Saveliev, Edmond Jolivet, Ashlee M. Earl, Michael M. Cox, John R. Battista

DOI: 10.1371/journal.pbio.0020304

In *PLoS Biology*, volume 2, issue 10:

There was an error in Figure 7D. Proteinase K was not added to reactions with XS DNA. Instead, the preceding two reaction lanes should have "+" symbols, indicating the addition of Proteinase K, as shown in the corrected Figure.



This correction note may be found online at DOI: 10.1371/journal.pbio.0040385.

Published November 14, 2006.

Citation: (2006) Correction: Preserving genome integrity: The DdrA protein of *Deinococcus radiodurans* R1. *PLoS Biol* 4(11): e385. DOI: 10.1371/journal.pbio.0040385