

Correction: Pathways of Carbon Assimilation and Ammonia Oxidation Suggested by Environmental Genomic Analyses of Marine Crenarchaeota

Edward DeLong, Steven Hallam, Tracy Mincer, Christa Schleper, Christina Preston, Katie Roberts, Paul Richardson

DOI: 10.1371/journal.pbio.0040095

In *PLoS Biology*, volume 04, issue 04:

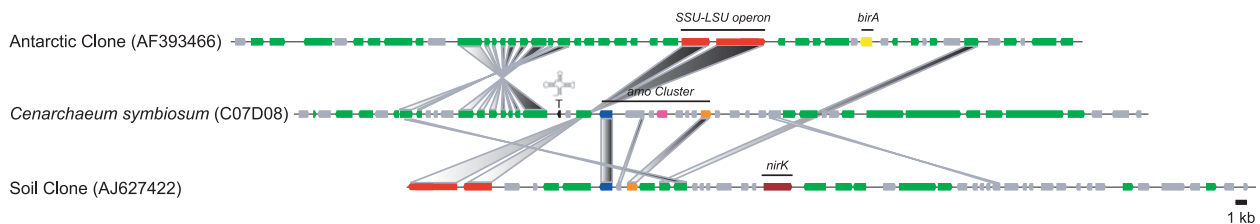
There were errors in Figure 4. In (A), the shaded box connecting the hypothetical protein adjacent to the *amoB* subunit of *C. symbiosum* to a conserved homolog identified in the crenarchaeal soil clone (AJ627422) was misplaced. This box should be drawn from the C-terminal region of the larger open reading frame immediately upstream of the *amoA* subunit of *C. symbiosum*.

In (B), the *N. europaea* *amo* subunits were mislabeled and misplaced. Their orientation should be reversed such that the *amoC* subunit appears in opposite orientation to the far left, followed by the A subunit and then the B subunit. This results in the inversion of the shaded boxes connecting the *N. europaea* and *C. symbiosum* *amo* subunits with respect to the original image. The color coding of the unlinked *amoC3* subunits is also incorrect. They should appear as pink colored boxes.

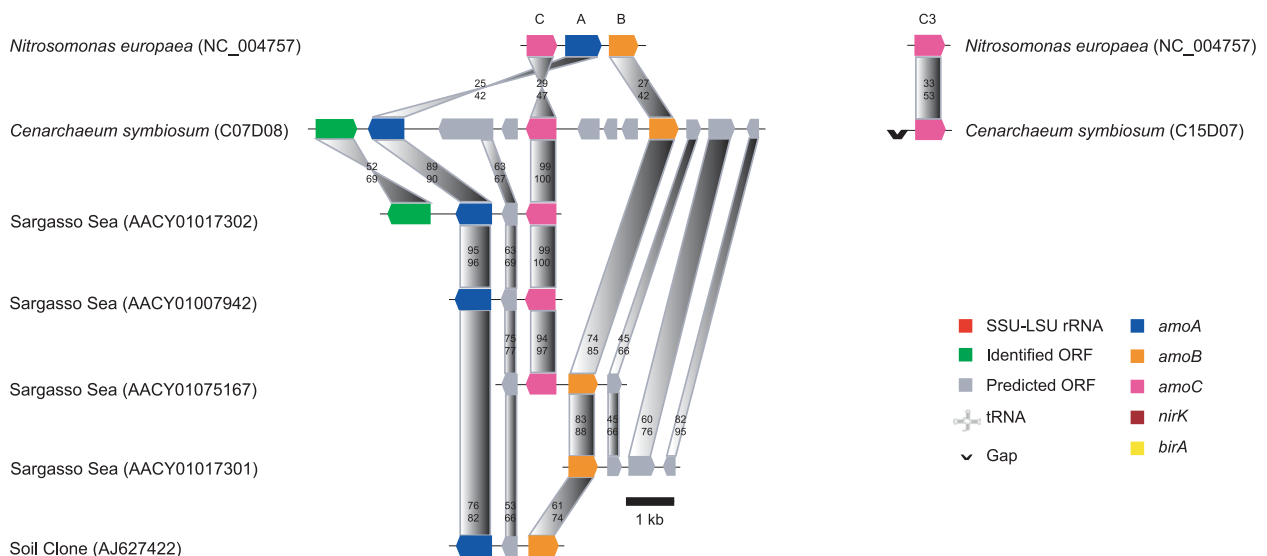
In the figure legend for both (A) and (B), the *amoB* and *amoC* subunits were inadvertently juxtaposed. The *amoC* subunit is represented by the pink colored box and the *amoB* subunit is represented by the orange colored box.

The corrected Figure 4 is attached.

A



B



DOI: 10.1371/journal.pbio.0040437.g001

This correction note may be found online at DOI: 10.1371/journal.pbio.0040437

Published December 12, 2006.

Citation: (2006) Correction: Pathways of carbon assimilation and ammonia oxidation suggested by environmental genomic analyses of marine crenarchaeota. *PLoS Biol* 4(12): e437. DOI: 10.1371/journal.pbio.0040437