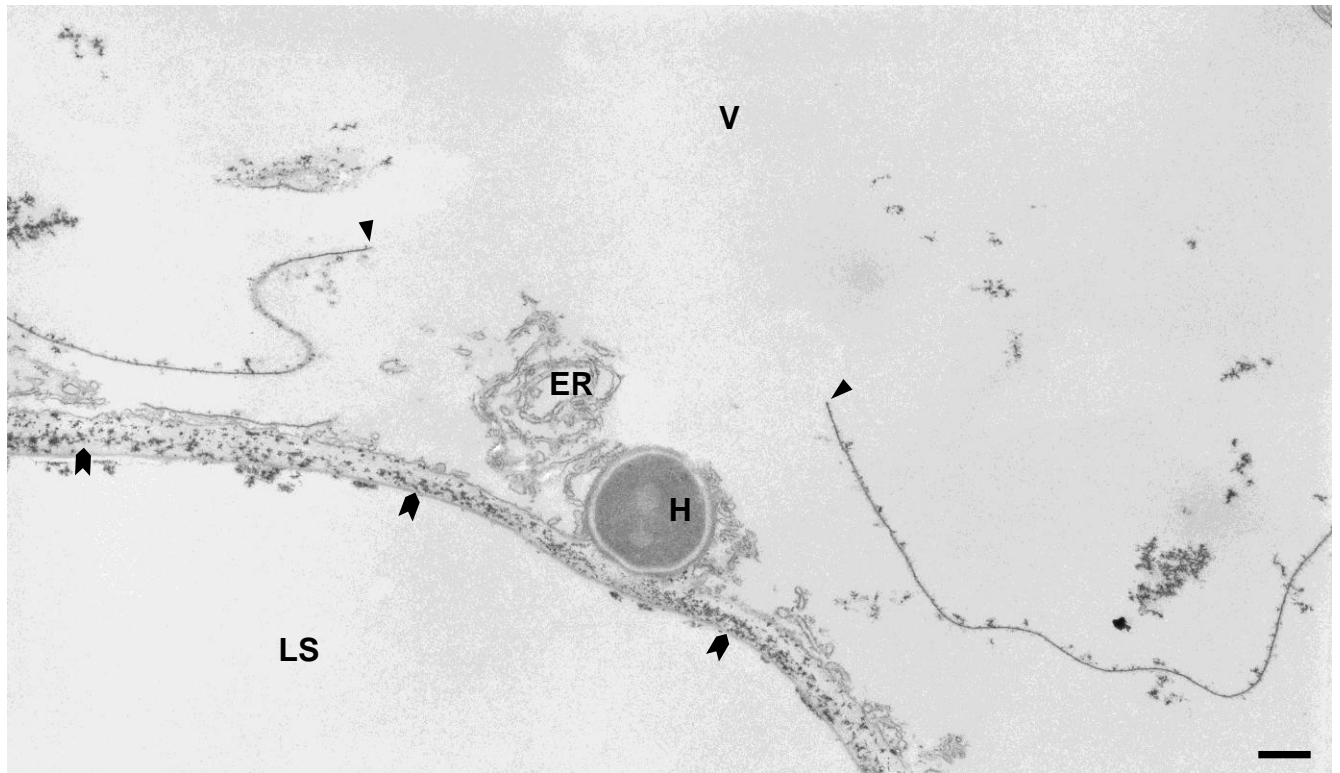


**Figure S2**



**Supplementary Figure 2. SG200 $\Delta$ pep1 infected cells undergo HR.**

TEM image of a maize epidermis cell undergoing HR after penetration by SG200 $\Delta$ pep1. Note the ruptured tonoplast (arrow heads) and severe oxidative stress indicated by CeCl<sub>3</sub> accumulation in the cell wall (chevrons). H: *Ustilago maydis* hypha, ER: endoplasmic reticulum, V: vacuole, LS: leaf surface. Bar: 1  $\mu$ m.