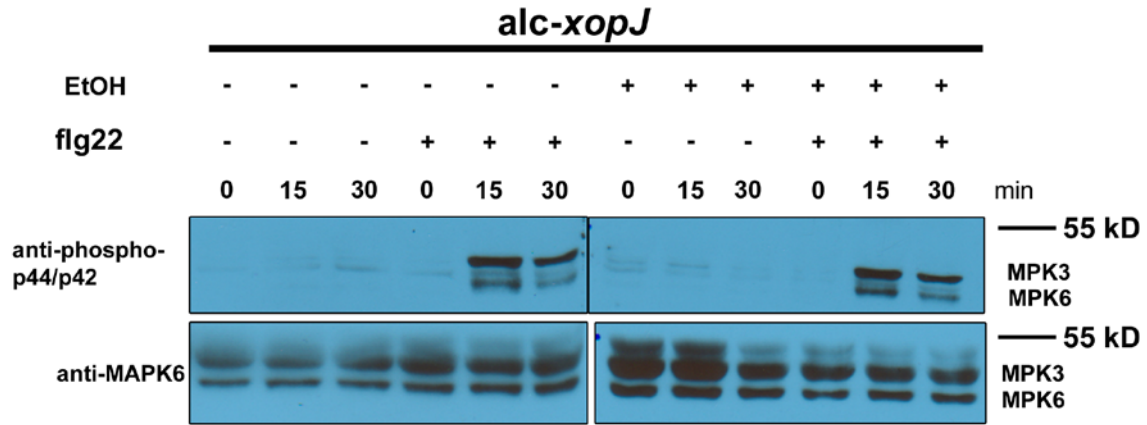


Figure S8

A



B

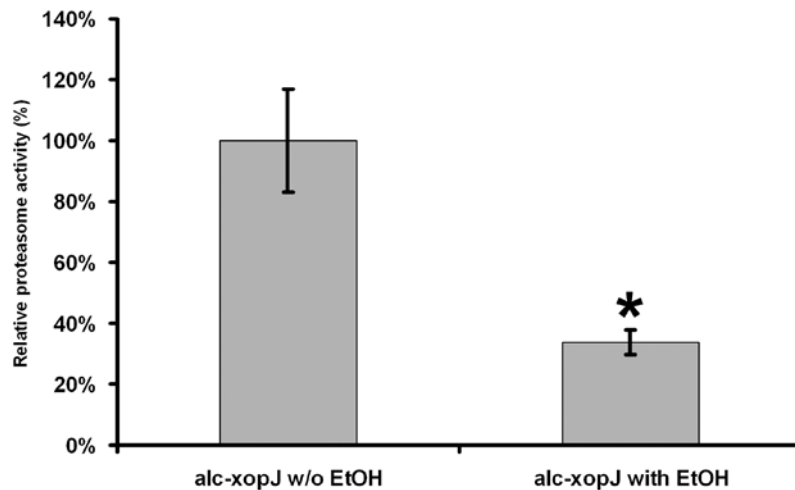


Figure S8: XopJ does not inhibit flg22-triggered MAPK signalling in Arabidopsis. (A) flg22 mediated MAPK activation un-induced alc-XopJ plant in comparison to those induced with ethanol. Leaves were treated with 1 μ M flg22, and MAPK activation was analyzed at the indicated time points. Upper panel: protein extracts (15 μ g per lane) were subjected to western-blot analysis using the phospho-p44/p42 MAPK antibody. Arrowheads indicate the positions of MPK3 and MPK6. Lower panel: equal protein level of MPK3 and MPK6 in each lane was verified using an anti-MPK6 antibody. (B) Proteasome activity before and after treatment of alc-XopJ plants with 1% ethanol. Data represent the mean SD. Significant differences were calculated using Student's t-test and are indicated by: *, $P < 0.05$.