

Supplementary Figure S1: Amount of infected mouse neuroblastoma cells 24 hours after infection. N2a cells were infected (m.o.i.=10) with (a) DUVV-NL07, (b) RABV-PV and (c) SHBRV-18 and stained with anti-NP FITC antibody.

Figure S1a

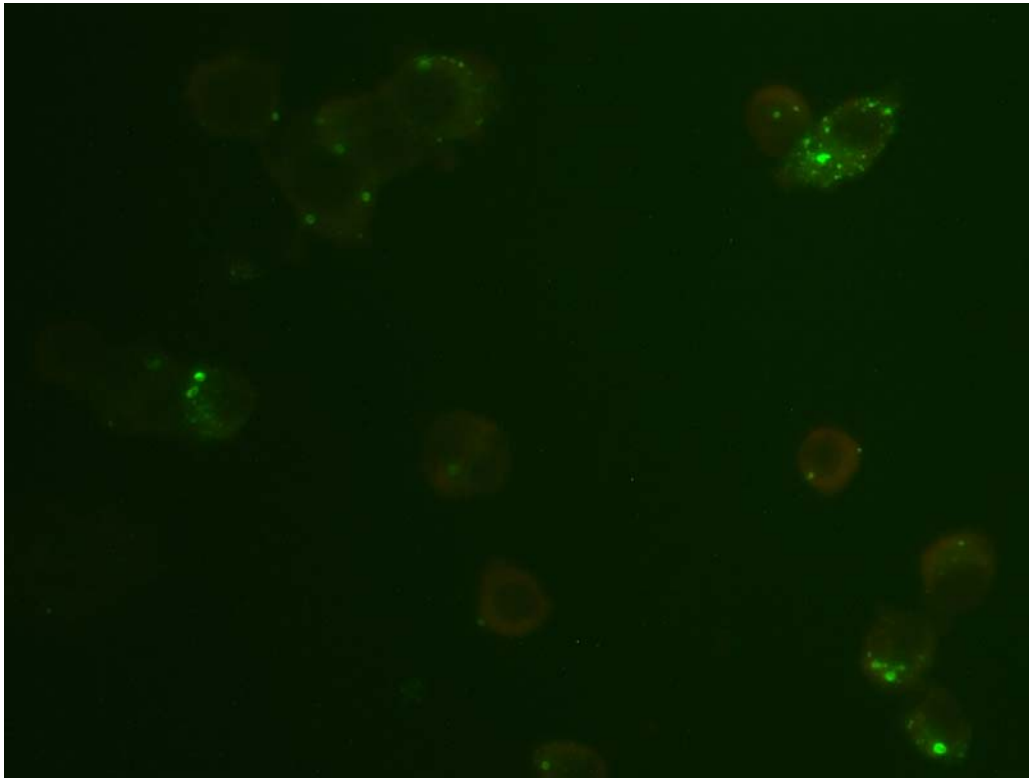


Figure S1b

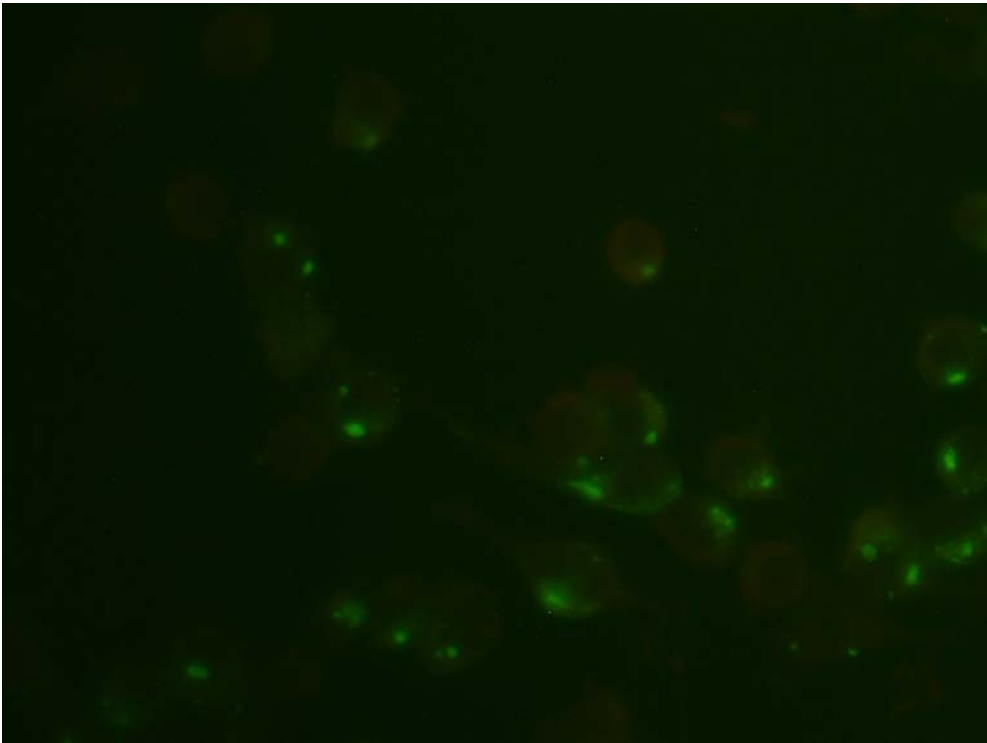


Figure S1c

