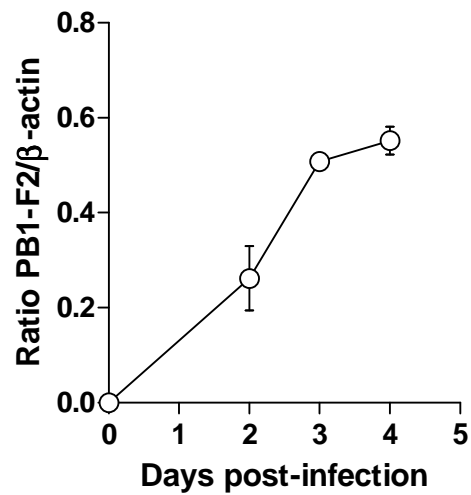


Figure S1. Le Goffic *et al.*



Supplemental Figure S1:

*In vivo* kinetics of PB1-F2 expression in IAV-infected mice lungs. Expressions of PB1-F2 and  $\beta$ -actin were monitored by Western blot analysis (Fig1A).  $\beta$ -actin was used as an internal control to standardize protein levels. Band intensities on blots were quantified using Image J software (<http://rsbweb.nih.gov/ij/>). The value for PB1-F2 are normalized against that obtained for  $\beta$ -actin. Data are presented as ratio of PB1-F2/ $\beta$ -actin amounts and represent the mean  $\pm$ SEM values obtained from three distinct mice.